

V&V Reference Report

L2 ASCDS Version : 8.4.5

Observation 2597 - L2 Version 3
Chandra X-Ray Center

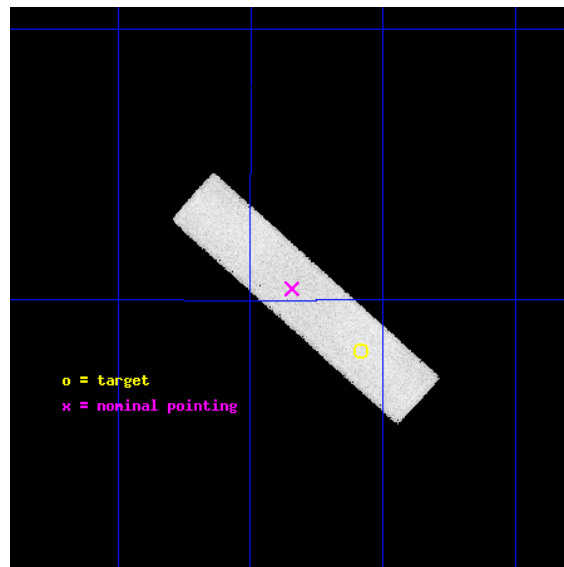
L2 Processing Date : Sep 28 2012

Contents

1	Front	2
2	OBI	3
2.1	OBI	3
2.1.1	Images	3
2.1.2	Parameters	4
2.1.3	Events	4
2.2	Compared Parameters	5
2.3	Aspect	6
2.4	Star Slots	9
2.4.1	Slot 3	9
2.4.2	Slot 4	10
2.4.3	Slot 5	11
2.4.4	Slot 6	12
2.4.5	Slot 7	13
2.5	FID Slots	14
2.5.1	Slot 0	14
2.5.2	Slot 1	15
2.5.3	Slot 2	16
A	Summary	17
A.1	Status	17
A.2	Comments	17

1 Front

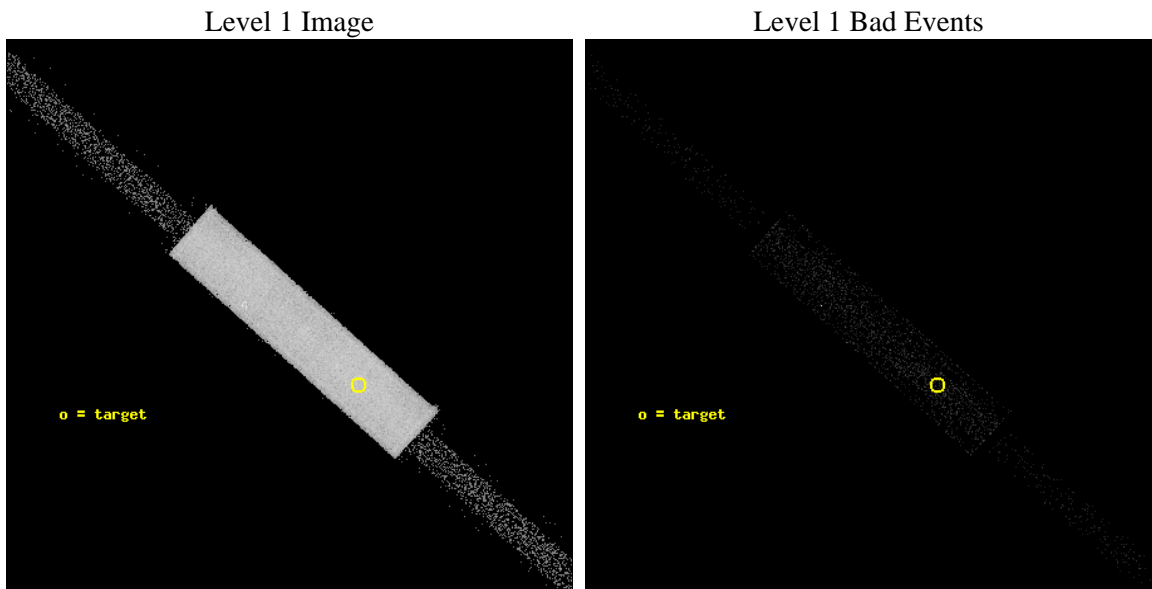
seq_num	290153	Sequence number
obs_id	2597	Observation id
title	AO3 CALIBRATION OBSERVATIONS OF BETELGEUSE	Proposal title
observer	Dr. CXC Calibration	Principal investigator
object	BETELGEUSE	Source name
ra_targ	88.792917	Observer's specified target RA [deg]
dec_targ	7.407056	Observer's specified target Dec [deg]
ra_nom	88.921984490129	Nominal RA [deg]
dec_nom	7.521101447784	Nominal Dec [deg]
roll_nom	41.704981849967	Nominal Roll [deg]
revision	3	Processing version of data
ontime	2143.5313358009	[s]
livetime	2128.7287425746	Ontime multiplied by DTCOR
l2events	101309	Number of level 2 events



2 OBI

2.1 OBI

2.1.1 Images



2.1.2 Parameters

obi_num	1	Obi number	sched_exp_time	2000.000000	[s] Scheduled observation exposure time
ascdsver	8.4.5	Processing system revision	ontime	2143.5313358009	[s]
caldsver	4.5.2	 	l1events	145902	Number of level 1 events
date	2012-09-28T22:05:22	Date and time of file creation			
revision	3	Processing version of data			

2.1.3 Events

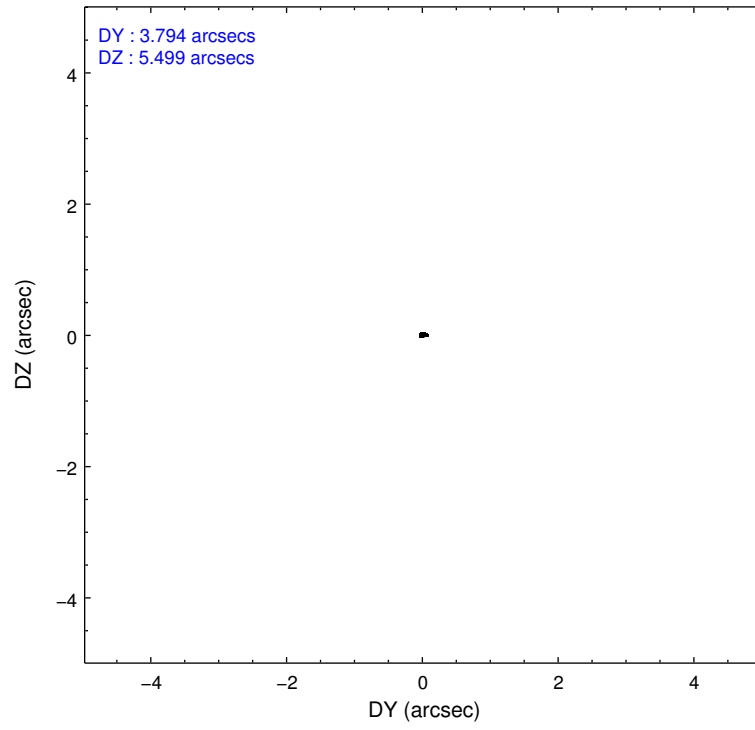
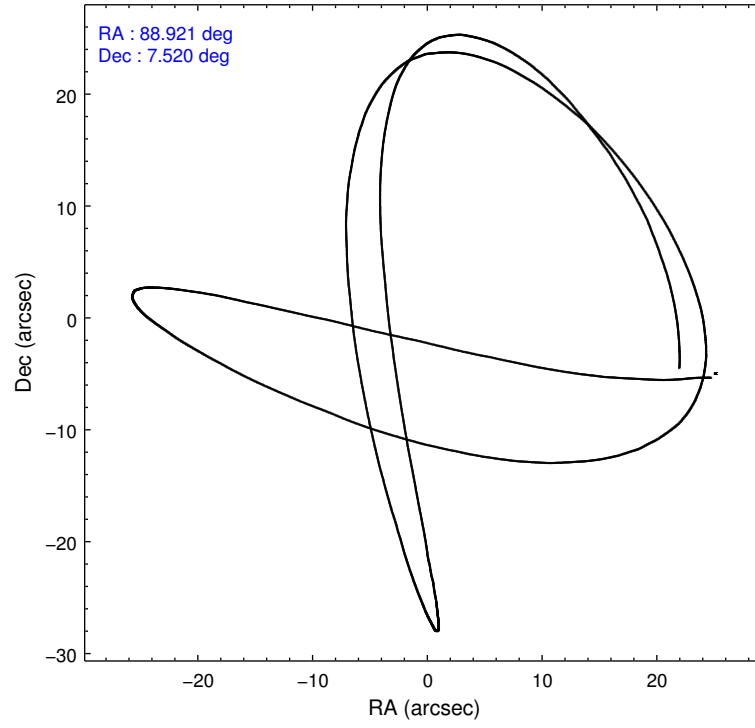
Level 1 Events

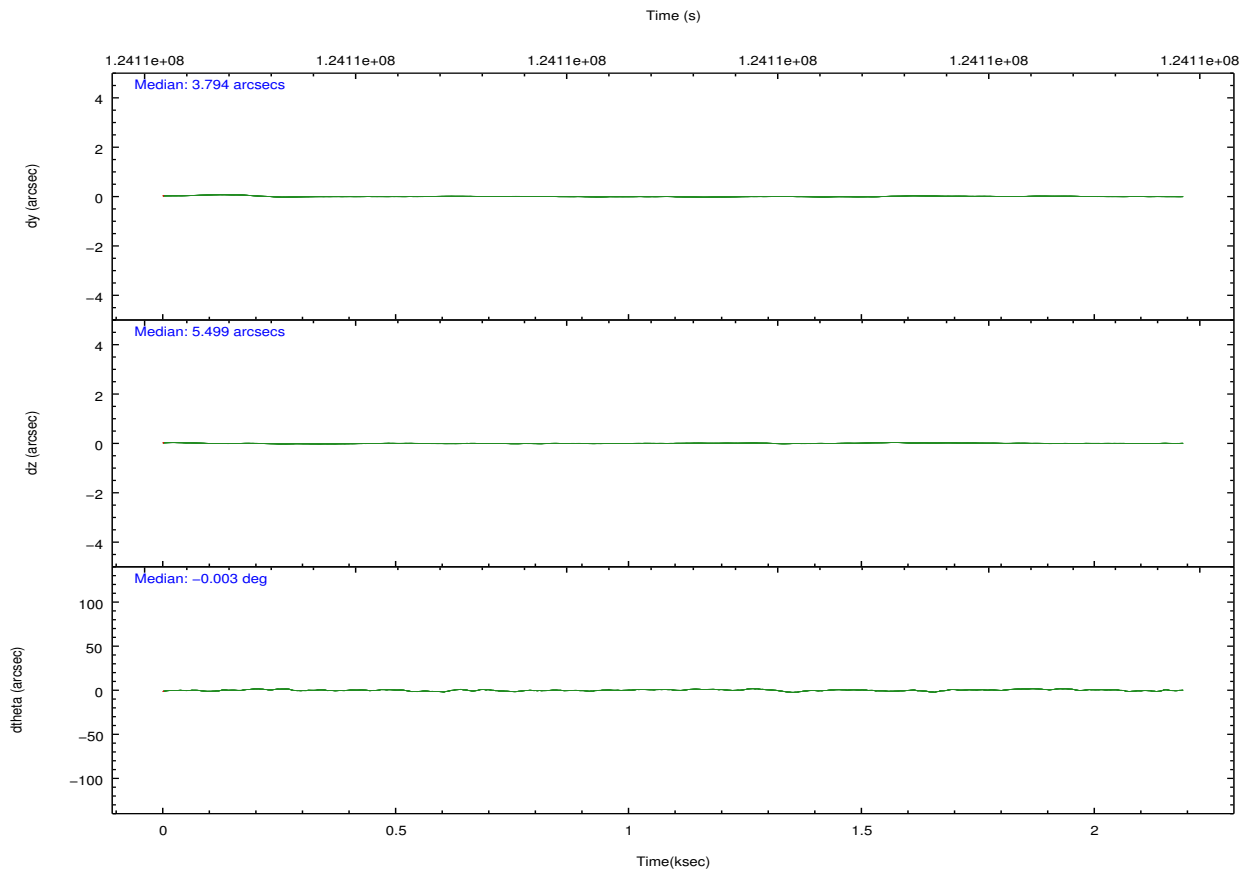
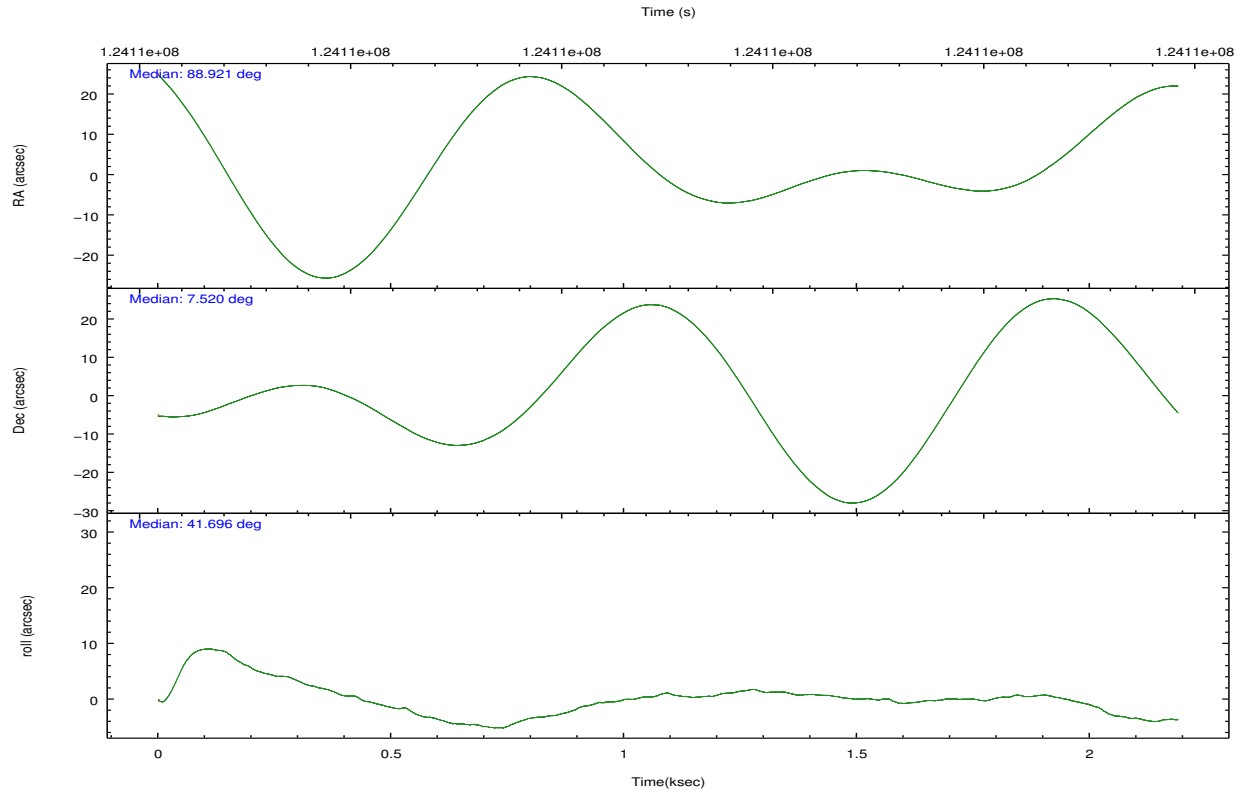
	segment 1	segment 2	segment 3
level 1 events	2471	141192	2239
rejected events	2471	20810	2239
rejected %	100%	14%	100%

2.2 Compared Parameters

Parameter	Planned	Actual	Parameter	Planned	Actual
Instrument	HRC	HRC	Obspar format version number	7	7
Detector	HRC-S	HRC-S	Obspar file type	PREDICTED	ACTUAL
Grating	NONE	NONE	Obspar update status	NONE	UPDATED
Data mode	OBSERVING	OBSERVING			
Observation mode	POINTING	POINTING			
[deg] Pointing RA	88.914451	88.92198449012915			
[deg] Pointing Dec	7.493259	7.521101447784033			
[deg] Pointing Roll	41.638622	41.70498184996654			
[s] Window start time (MET)	123552064.184000	123552064.184000			
[s] Window stop time (MET)	126144064.184000	126144064.184000			
[mm] SIM focus pos	-1.429586	-1.428180813131781			
[mm] SIM defocus	0.1037507710433287	0.1051558262725154			
[mm] SIM translation stage pos	250.455976	250.466033080201			
[mm] SIM translation stage offset	0	-0.01005468664627074			
[s] Observation start time (MET)	124105845.184000	124105470.00168			
Observation start date	2001-12-07T09:49:41	2001-12-07T09:44:30			
[s] Observation end time (MET)	124107845.184000	124107980.22678			
Observation end date	2001-12-07T10:23:01	2001-12-07T10:26:20			

2.3 Aspect



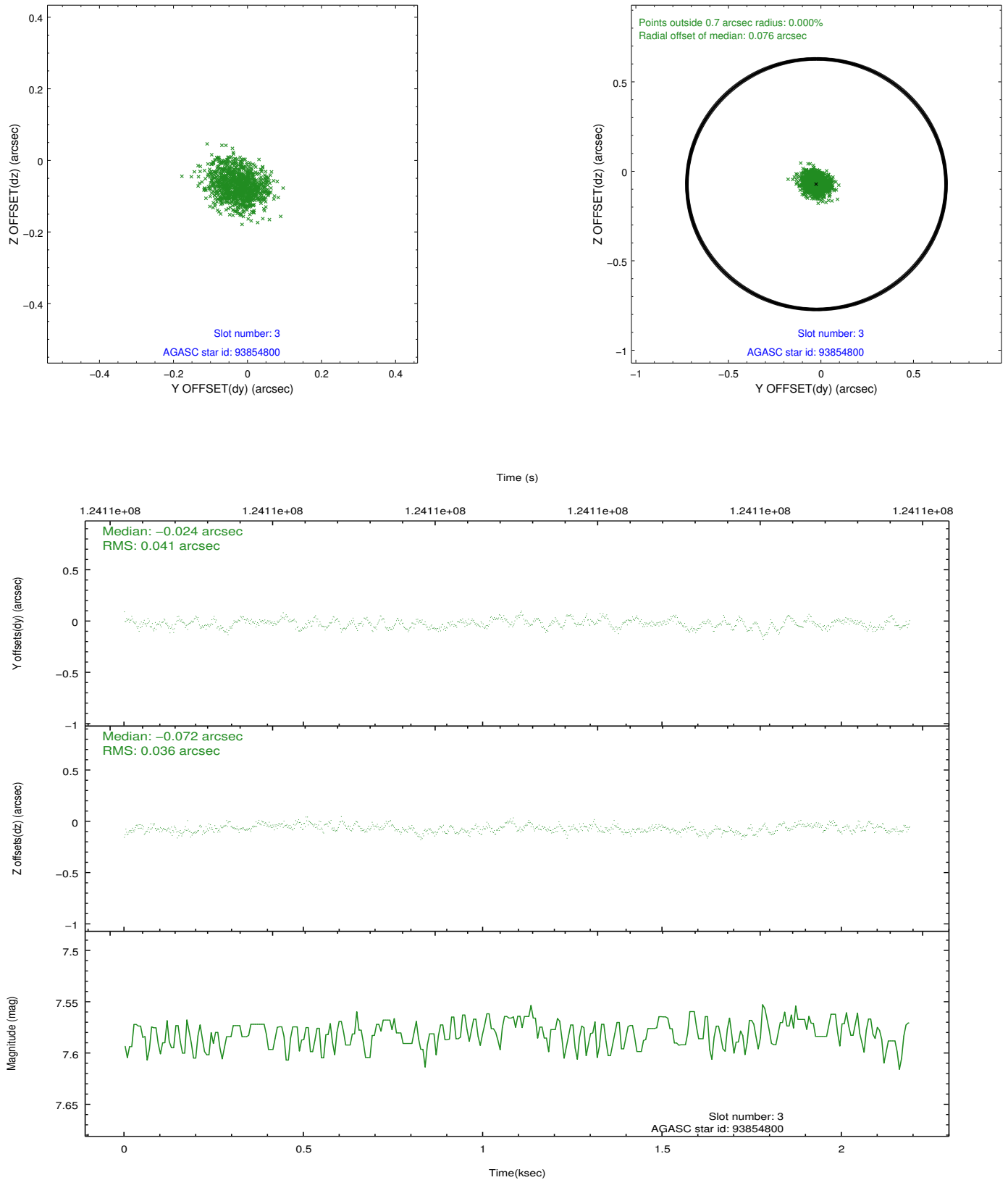


Slot Statistics

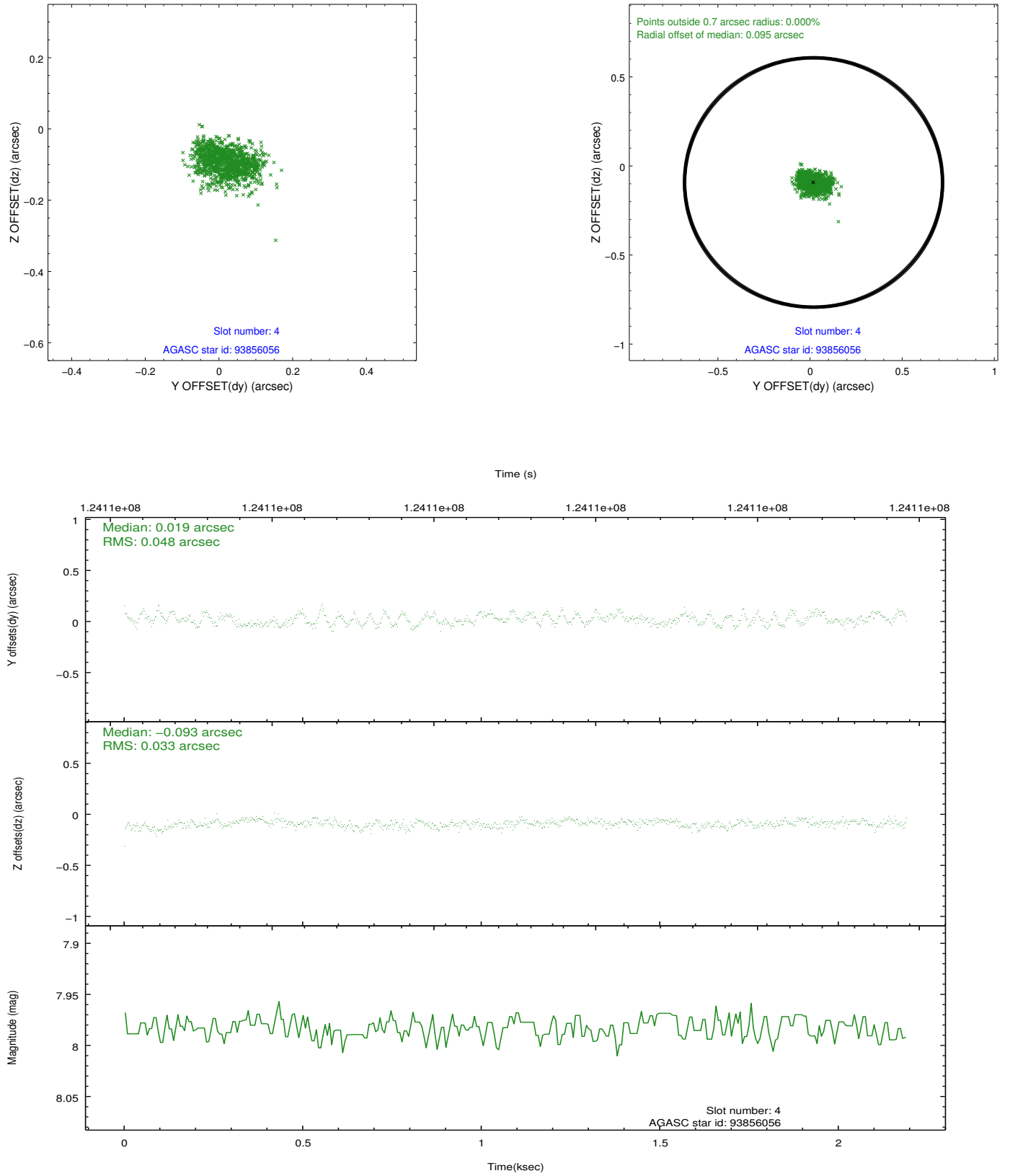
slot	status	id	mag	n_pts	med_dy	med_dz	dr1	dr2	ra	dec	mean_y	mean_z
0	FID	HRC-S-1	6.99	535	0.161	-0.163	0.010	0.019	0.000000	0.000000	-1157.85	-454.03
1	FID	HRC-S-2	6.99	535	0.082	-0.093	0.006	0.013	0.000000	0.000000	1239.59	-447.48
2	FID	HRC-S-3	7.01	535	0.147	-0.046	0.008	0.015	0.000000	0.000000	-1158.25	574.78
3	GUIDE	93854800	7.58	1069	-0.024	-0.072	0.059	0.092	88.376308	7.655454	-1045.82	1712.56
4	GUIDE	93856056	7.98	1069	0.019	-0.093	0.062	0.099	88.147460	7.547925	-1913.90	1968.69
5	GUIDE	16913360	8.34	1067	-0.052	0.066	0.069	0.104	89.178373	7.247125	114.95	-1286.47
6	GUIDE	16918912	8.66	1069	-0.027	0.120	0.094	0.148	89.257075	6.922287	-449.11	-2350.70
7	GUIDE	93855168	9.05	1061	0.080	-0.024	0.081	0.136	89.021483	7.846508	1130.65	694.72

2.4 Star Slots

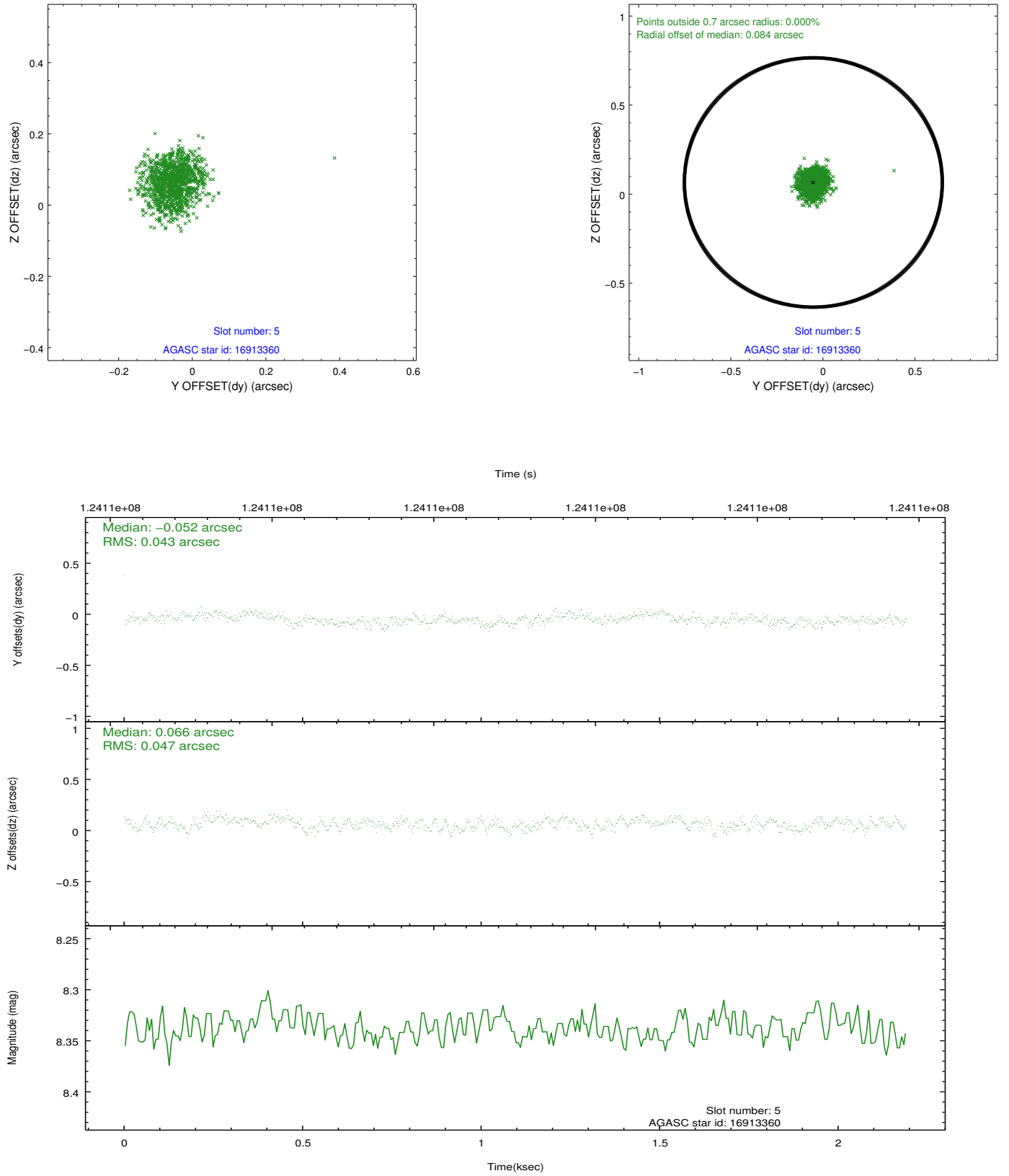
2.4.1 Slot 3



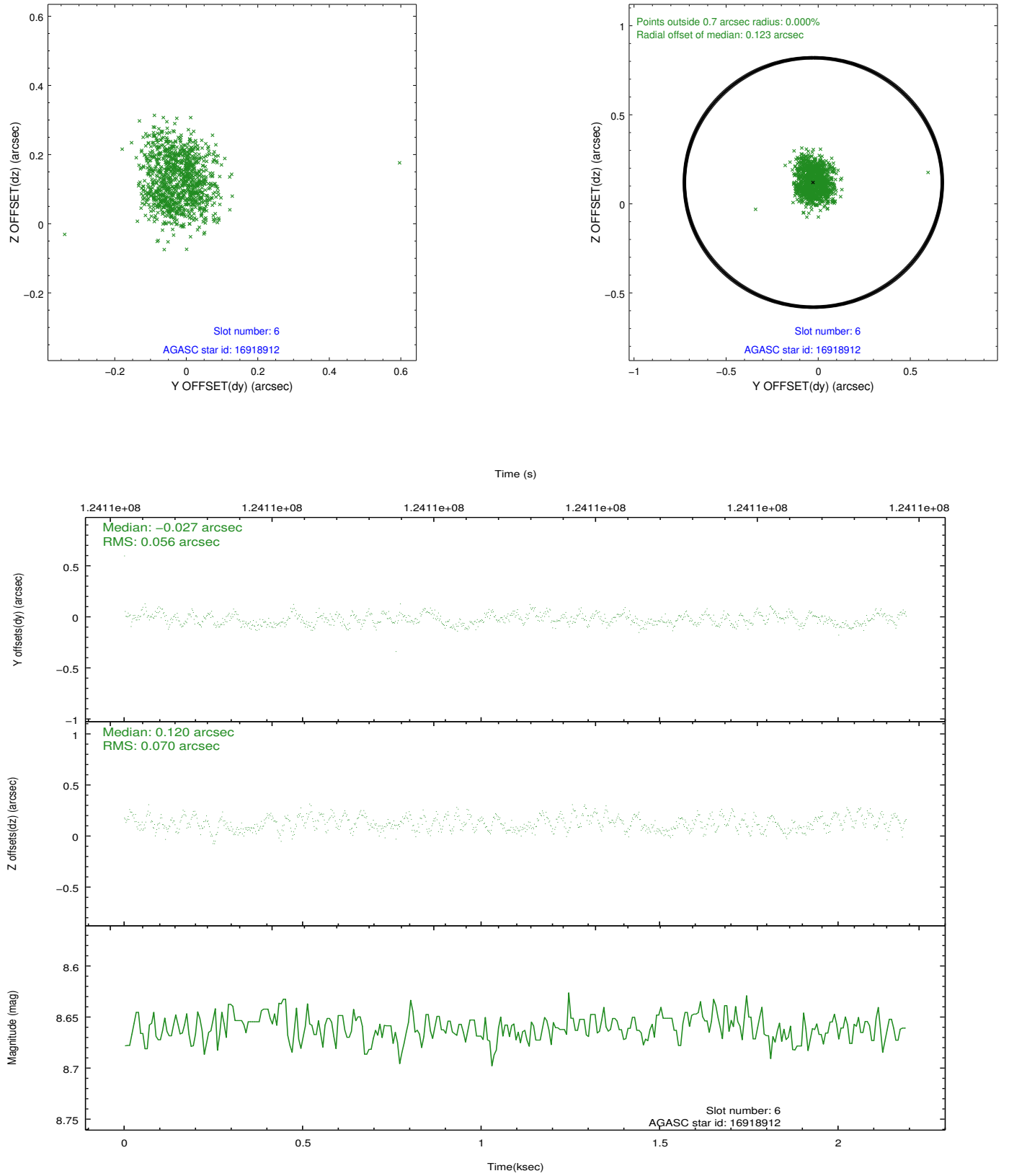
2.4.2 Slot 4



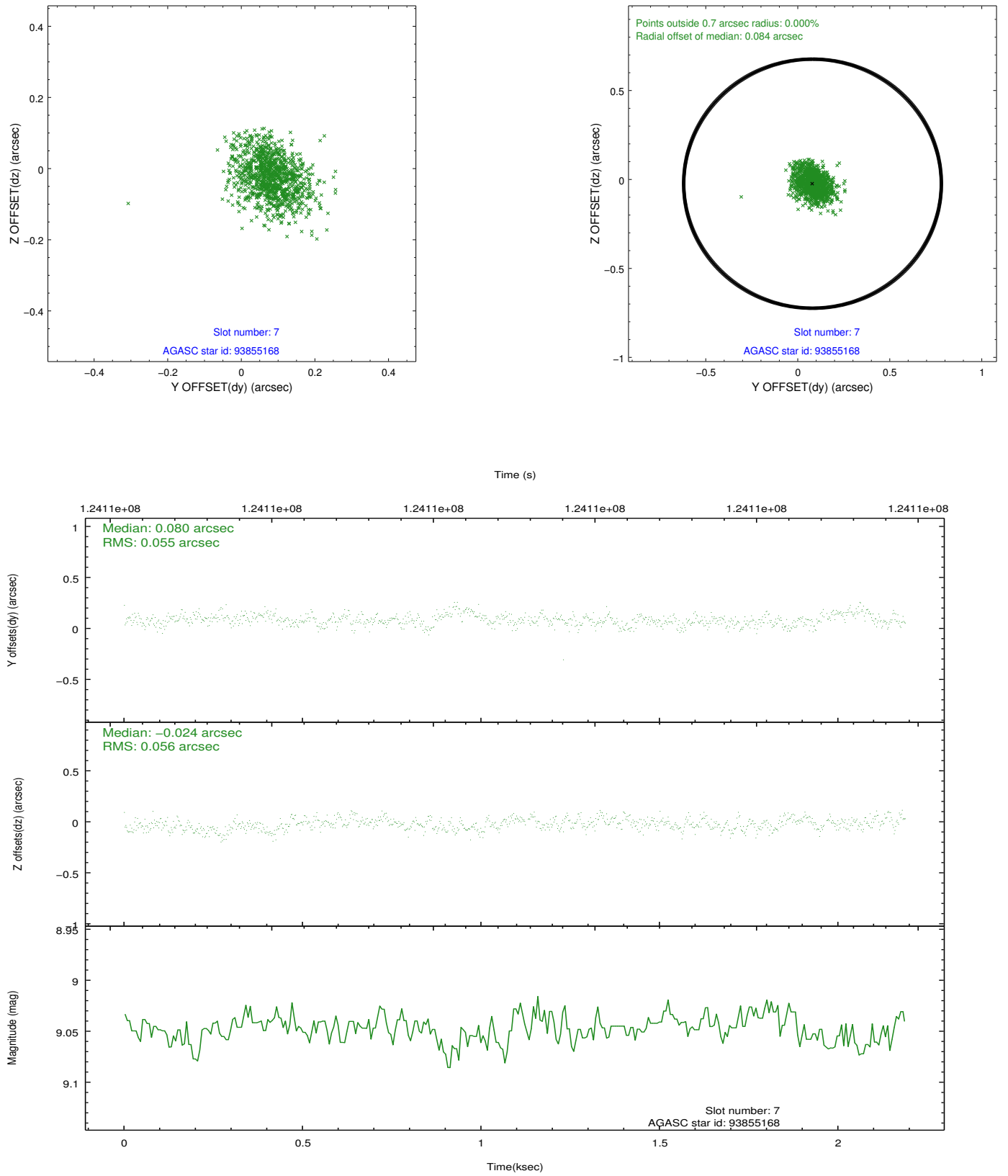
2.4.3 Slot 5



2.4.4 Slot 6

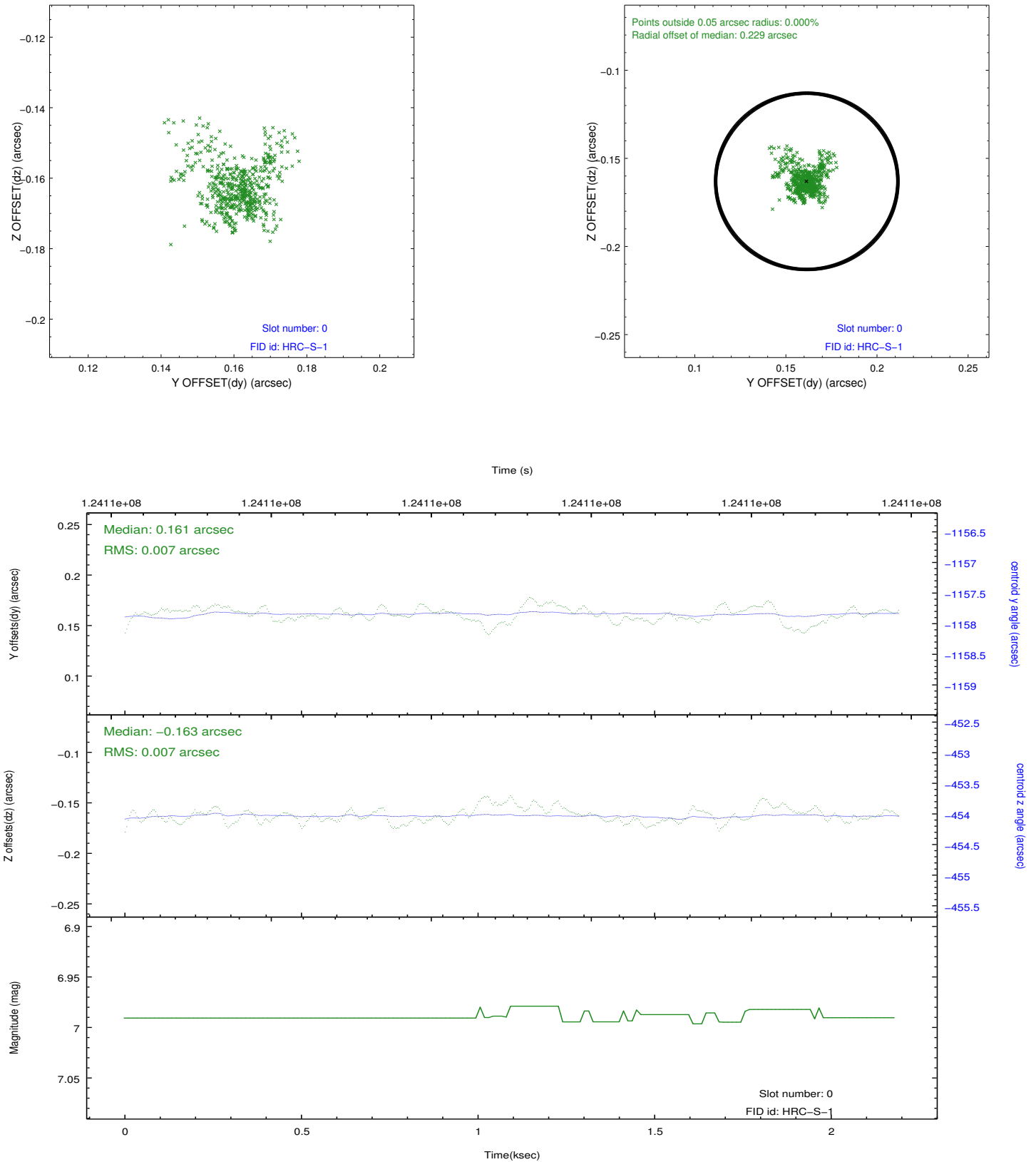


2.4.5 Slot 7

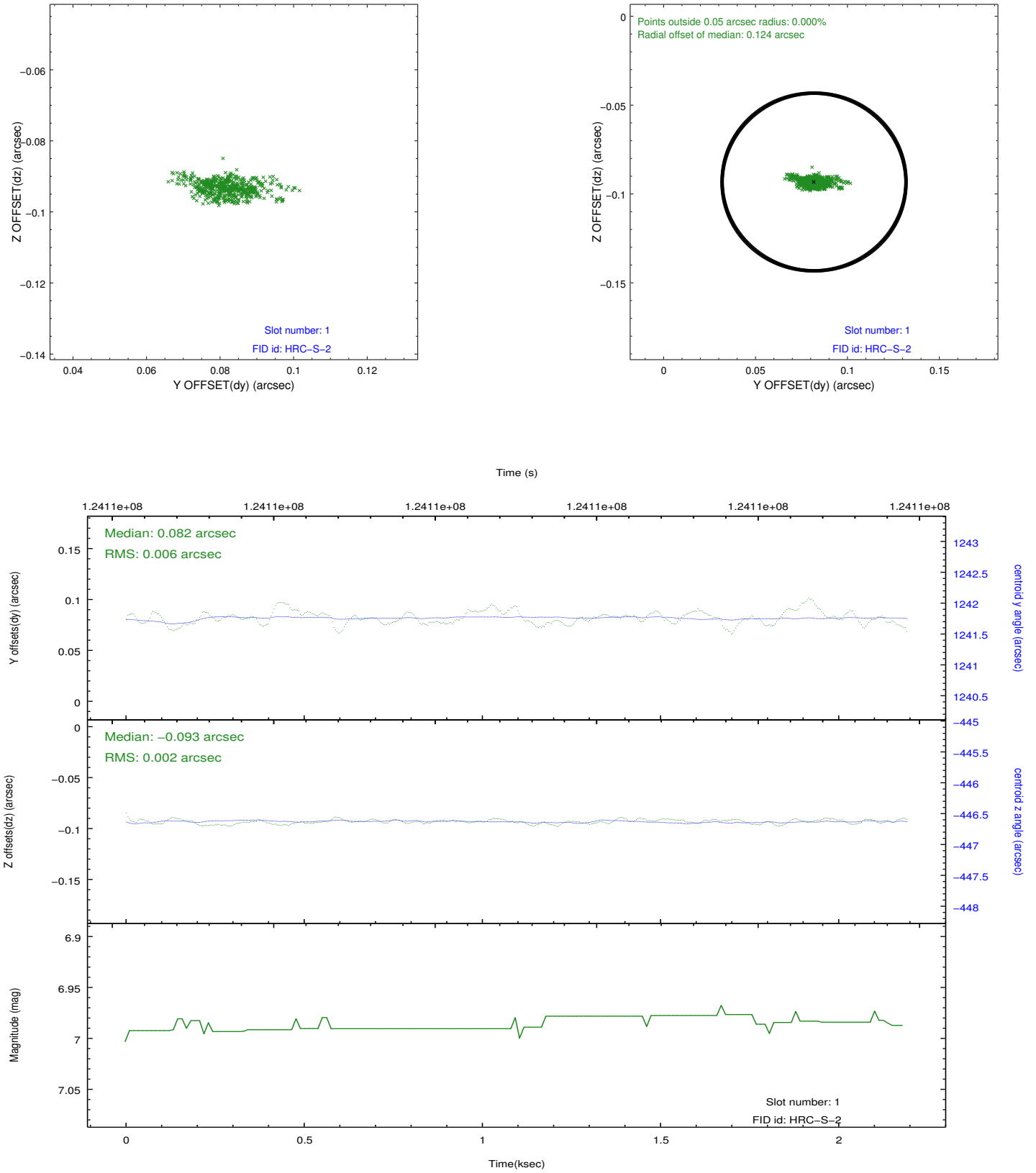


2.5 FID Slots

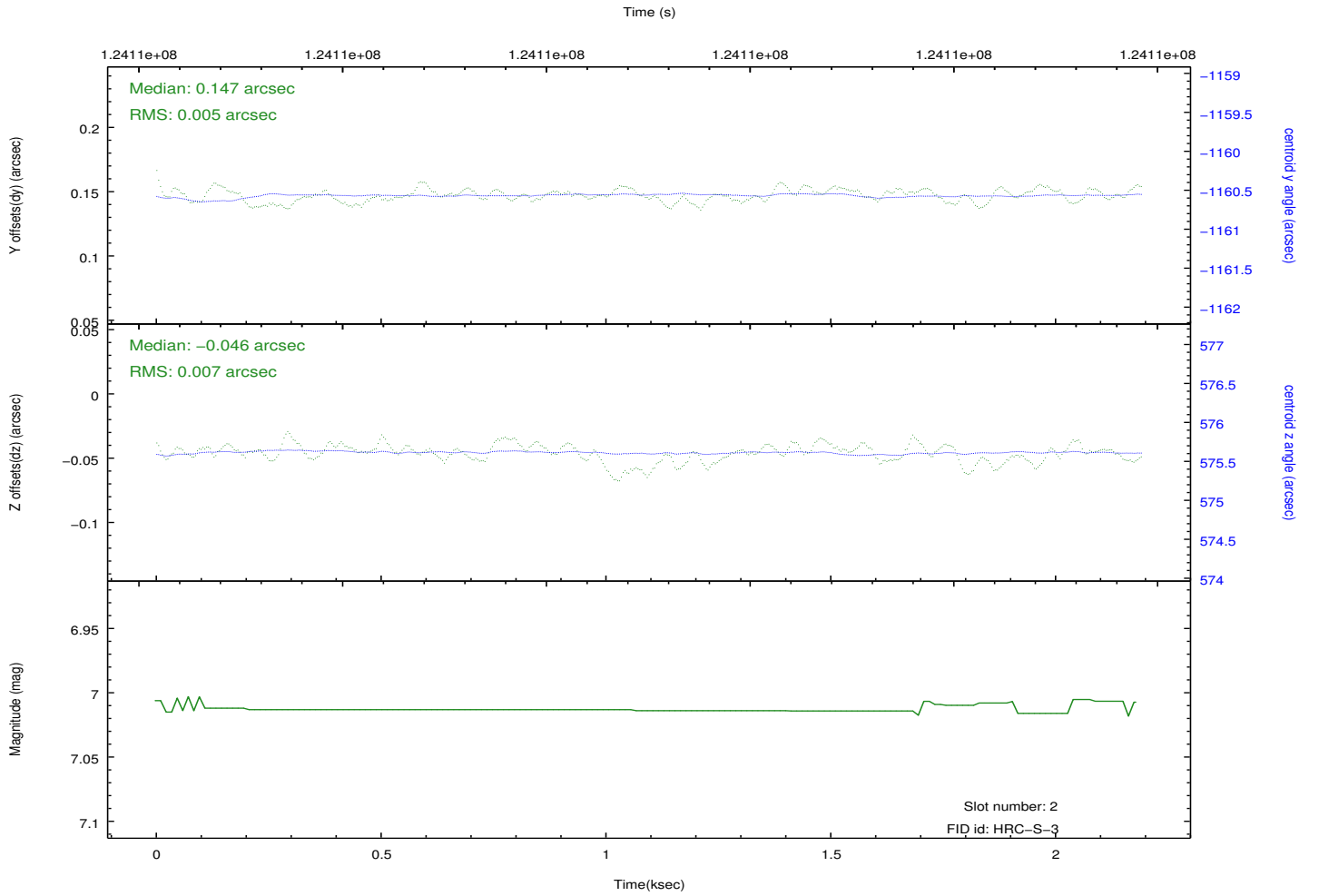
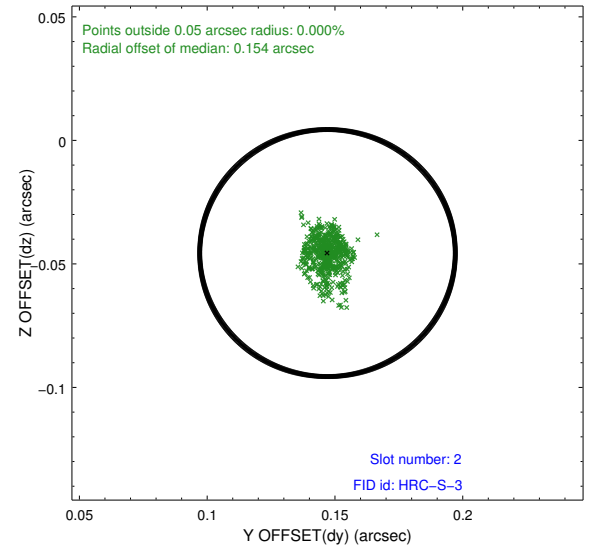
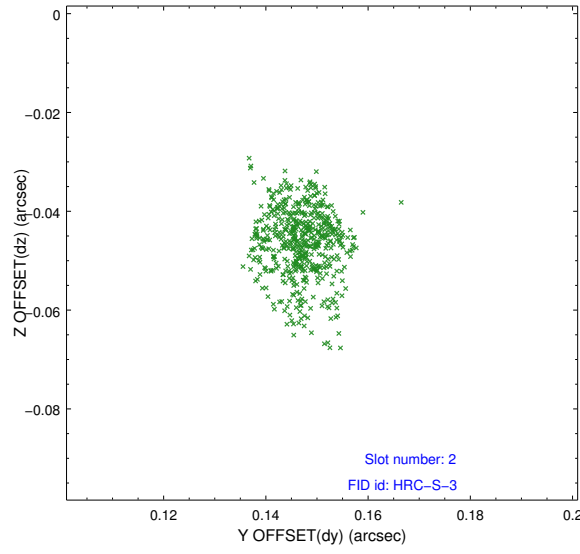
2.5.1 Slot 0



2.5.2 Slot 1



2.5.3 Slot 2



A Summary

A.1 Status

V&V Scientist	Jen Lauer
V&V Date (YYYY-MM-DD)	2012.09.30
V&V Edition	1
V&V Disposition and Status	OK
V&V Charge Time	2.182

A.2 Comments

Charge time for this ObsId remains at previous value of 2.182 ks although with the current processing the charge time would have been 2.14 ksec. Window constraint met.