

# V&V Reference Report

## L2 ASCDS Version : 8.4.5

Observation 1558 - L2 Version 3  
Chandra X-Ray Center

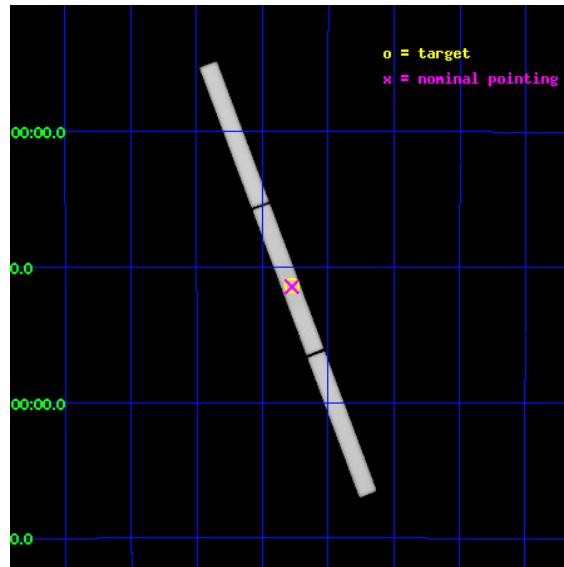
L2 Processing Date : Sep 21 2012

## Contents

<b>1</b>	<b>Front</b>	<b>2</b>
<b>2</b>	<b>OBI</b>	<b>3</b>
2.1	OBI . . . . .	3
2.1.1	Images . . . . .	3
2.1.2	Parameters . . . . .	4
2.1.3	Events . . . . .	4
2.2	Compared Parameters . . . . .	5
2.3	Aspect . . . . .	6
2.4	Star Slots . . . . .	9
2.4.1	Slot 3 . . . . .	9
2.4.2	Slot 4 . . . . .	10
2.4.3	Slot 5 . . . . .	11
2.4.4	Slot 6 . . . . .	12
2.4.5	Slot 7 . . . . .	13
2.5	FID Slots . . . . .	14
2.5.1	Slot 0 . . . . .	14
2.5.2	Slot 1 . . . . .	15
2.5.3	Slot 2 . . . . .	16
<b>A</b>	<b>Summary</b>	<b>17</b>
A.1	Status . . . . .	17
A.2	Comments . . . . .	17

# 1 Front

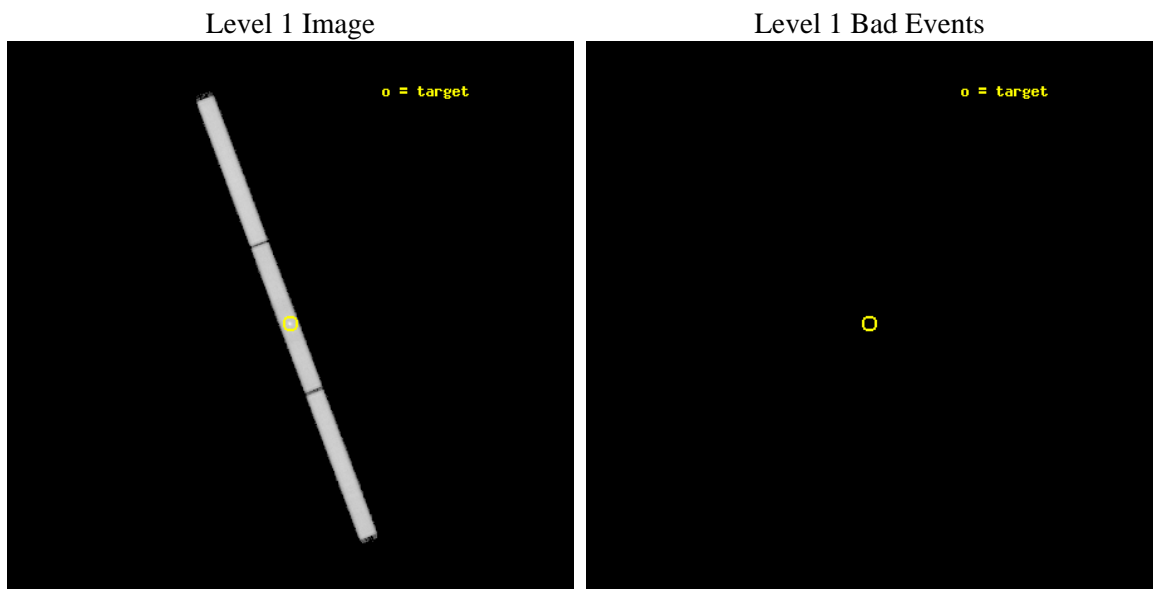
seq_num	590167	Sequence number
obs_id	1558	Observation id
title	CALIBRATION OBSERVATIONS OF THE STANDARD CANDLE G21.5-09	Proposal
observer	Dr. CXC Calibration	Principal investigator
object	G21.5-0.9 [HRC-S, Offsets=0,0,0 Offsets=AO2B]	Source name
ra_targ	278.389583	Observer's specified target RA [deg]
dec_targ	-10.568528	Observer's specified target Dec [deg]
ra_nom	278.38787277856	Nominal RA [deg]
dec_nom	-10.572873733378	Nominal Dec [deg]
roll_nom	249.25577412328	Nominal Roll [deg]
revision	3	Processing version of data
ontime	10590.556666166	[s]
livetime	8906.1238122402	Ontime multiplied by DTCOR
l2events	961701	Number of level 2 events



## 2 OBI

### 2.1 OBI

#### 2.1.1 Images



### 2.1.2 Parameters

obi_num	2	Obi number	sched_exp_time	10000.000000	[s] Scheduled observation exposure time
ascdsver	8.4.5	Processing system revision	ontime	10590.556666166	[s]
caldsver	4.5.1.1	&#160	l1events	1197677	Number of level 1 events
date	2012-09-21T09:25:41	Date and time of file creation			
revision	3	Processing version of data			

### 2.1.3 Events

Level 1 Events

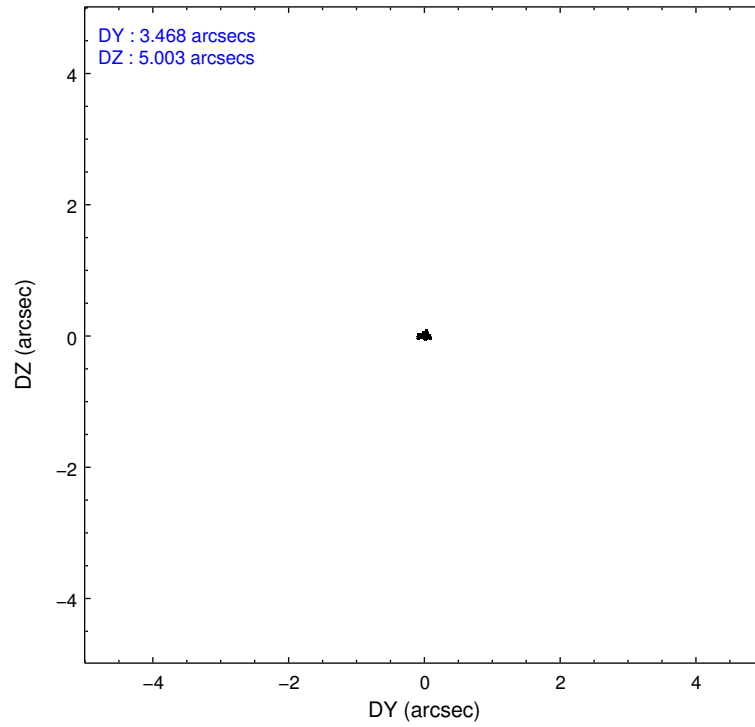
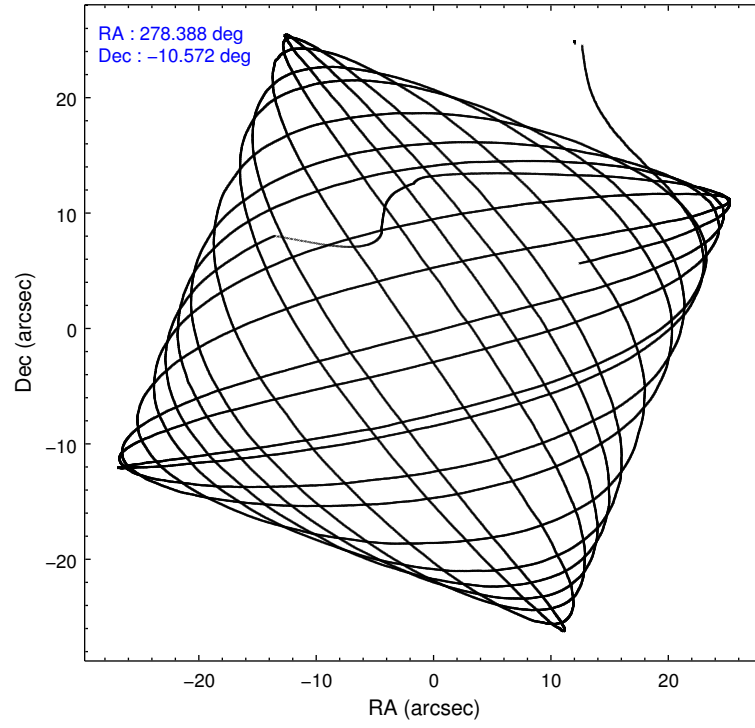
	<b>segment 1</b>	<b>segment 2</b>	<b>segment 3</b>
level 1 events	430939	375918	390820
rejected events	12876	12551	13004
rejected %	2%	3%	3%

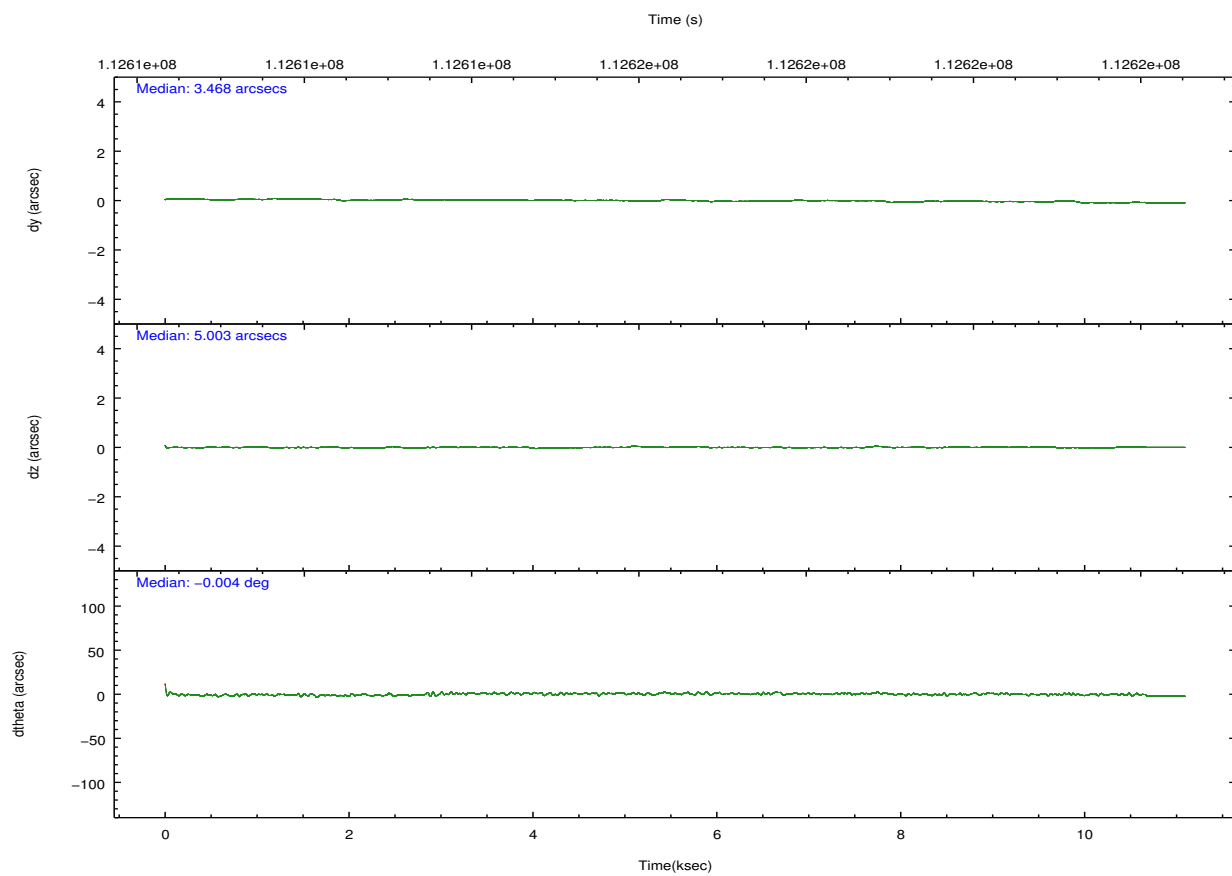
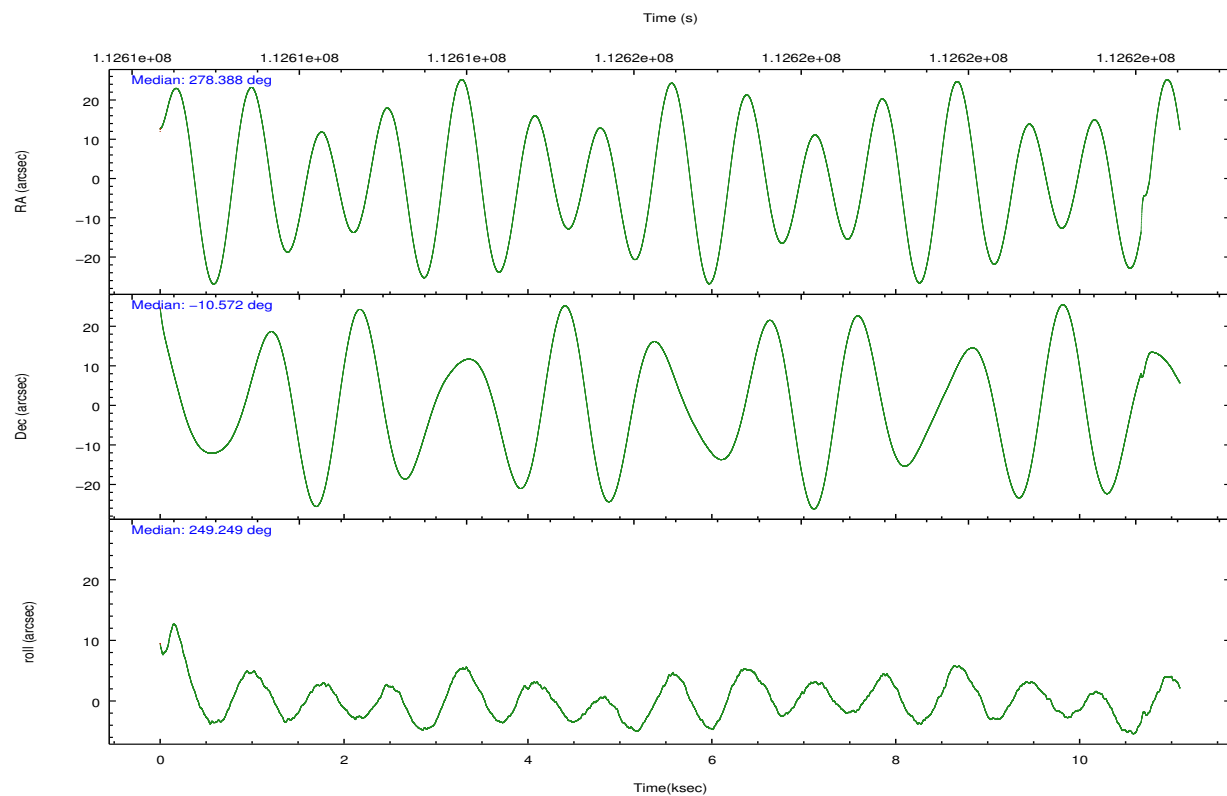


## 2.2 Compared Parameters

Parameter	Planned	Actual	Parameter	Planned	Actual
Instrument	HRC	HRC	Obspar format version number	7	7
Detector	HRC-S	HRC-S	Obspar file type	PREDICTED	ACTUAL
Grating	NONE	NONE	Obspar update status	NONE	UPDATED
Data mode	OBSERVING	OBSERVING			
Observation mode	POINTING	POINTING			
[deg] Pointing RA	278.381668	278.3878727785595			
[deg] Pointing Dec	-10.544890	-10.57287373337812			
[deg] Pointing Roll	249.187300	249.2557741232808			
[s] Window start time (MET)	110332864.184000	110332864.184000			
[s] Window stop time (MET)	112838464.184000	112838464.184000			
[mm] SIM focus pos	-1.429586	-1.428180813131781			
[mm] SIM defocus	0.1037507710433287	0.1051558262725154			
[mm] SIM translation stage pos	250.455976	250.4635187648994			
[mm] SIM translation stage offset	0	-0.007540371344731511			
[s] Observation start time (MET)	112611071.184000	112610019.72079			
Observation start date	2001-07-27T08:50:07	2001-07-27T08:33:39			
[s] Observation end time (MET)	112621071.184000	112622321.77127			
Observation end date	2001-07-27T11:36:47	2001-07-27T11:58:41			

## 2.3 Aspect



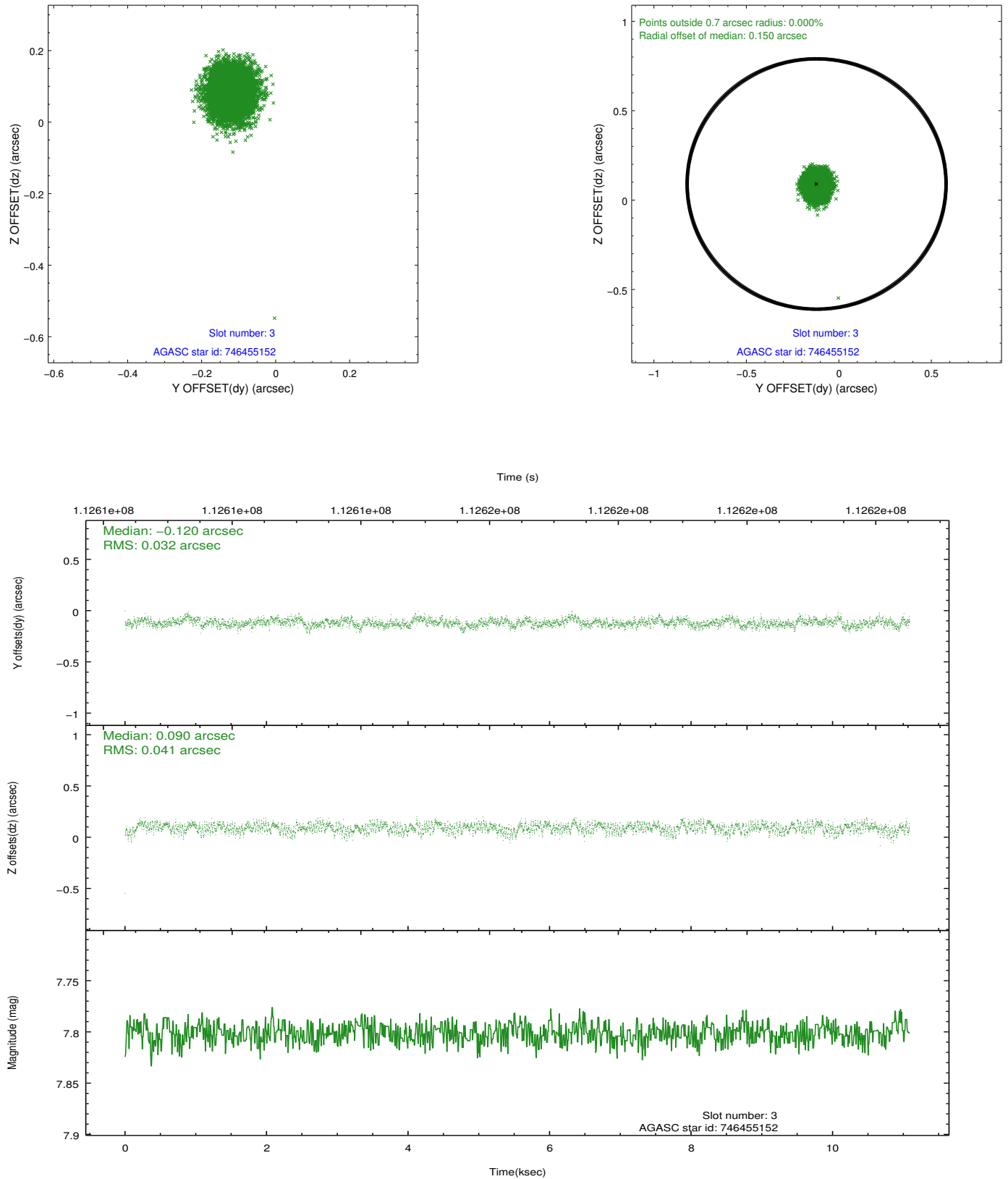


### Slot Statistics

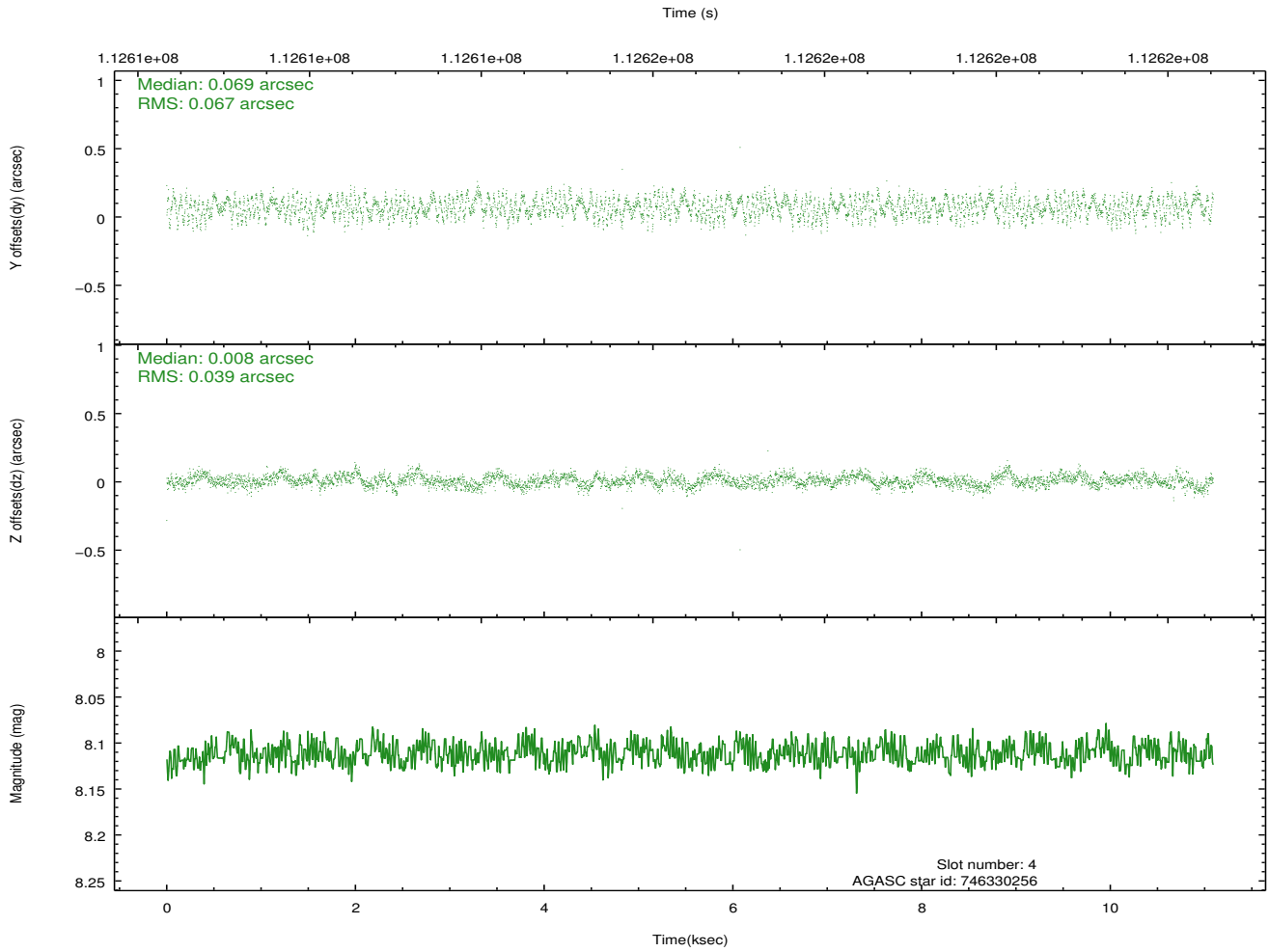
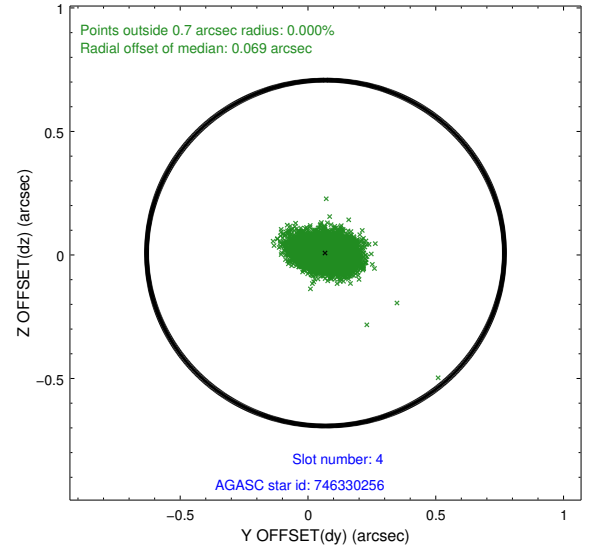
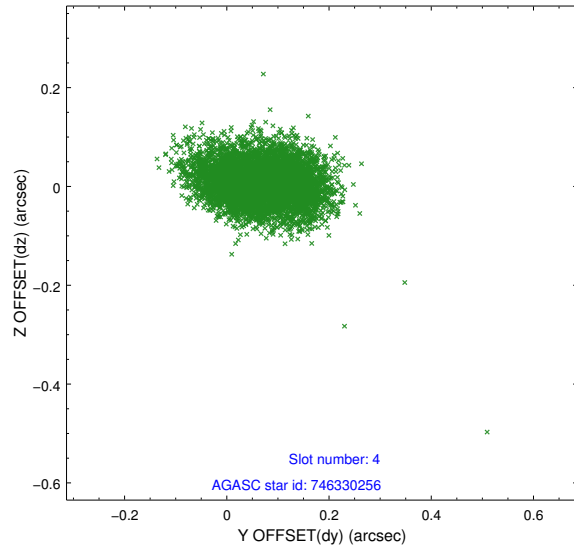
slot	status	id	mag	n_pts	med_dy	med_dz	dr1	dr2	ra	dec	mean_y	mean_z
0	FID	HRC-S-1	6.99	2606	0.136	-0.161	0.007	0.012	0.000000	0.000000	-1157.52	-453.50
1	FID	HRC-S-3	7.01	2605	0.156	-0.034	0.008	0.013	0.000000	0.000000	-1160.68	575.99
2	FID	HRC-S-4	6.93	2605	0.096	-0.103	0.005	0.010	0.000000	0.000000	1240.24	578.90
3	GUIDE	746455152	7.80	5408	-0.120	0.090	0.056	0.089	278.447893	-9.976732	-1993.96	-507.16
4	GUIDE	746330256	8.11	5406	0.069	0.008	0.082	0.130	277.634401	-10.863955	2016.81	-2059.96
5	GUIDE	746462456	8.39	5409	-0.074	0.054	0.061	0.100	278.652171	-10.530173	-387.52	876.25
6	GUIDE	746455112	8.93	5403	0.207	-0.145	0.076	0.127	278.266531	-10.703234	679.12	-177.73
7	GUIDE	746460272	8.91	5406	-0.083	-0.008	0.078	0.127	278.847488	-10.152127	-1905.74	1041.04

## 2.4 Star Slots

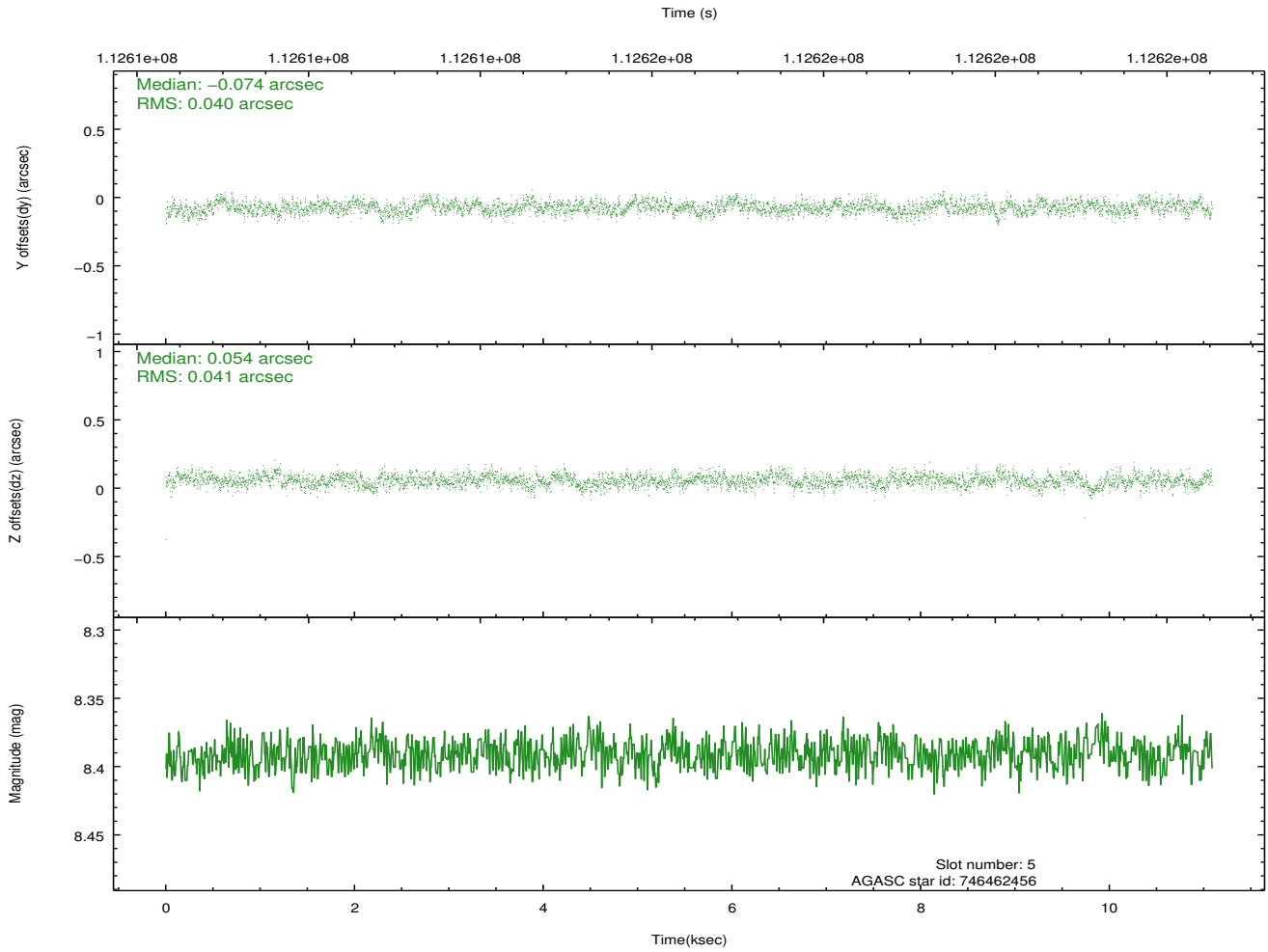
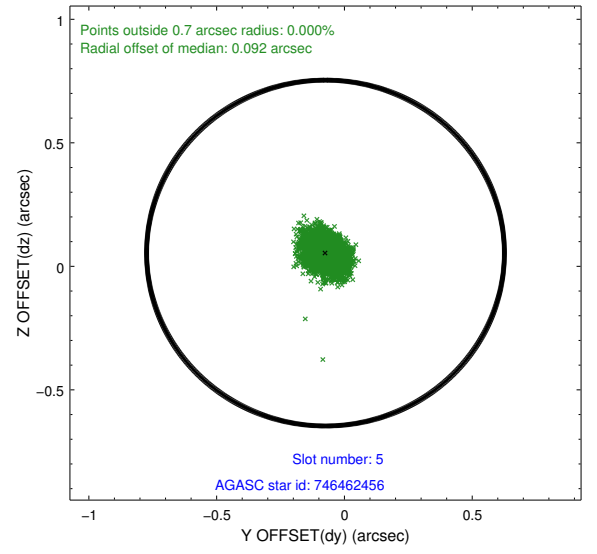
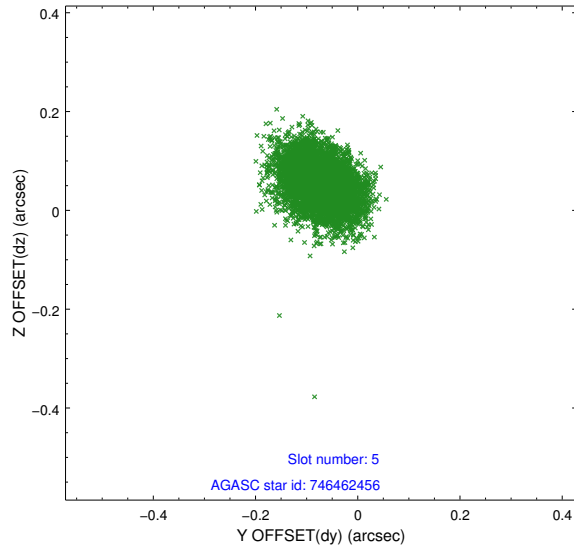
### 2.4.1 Slot 3



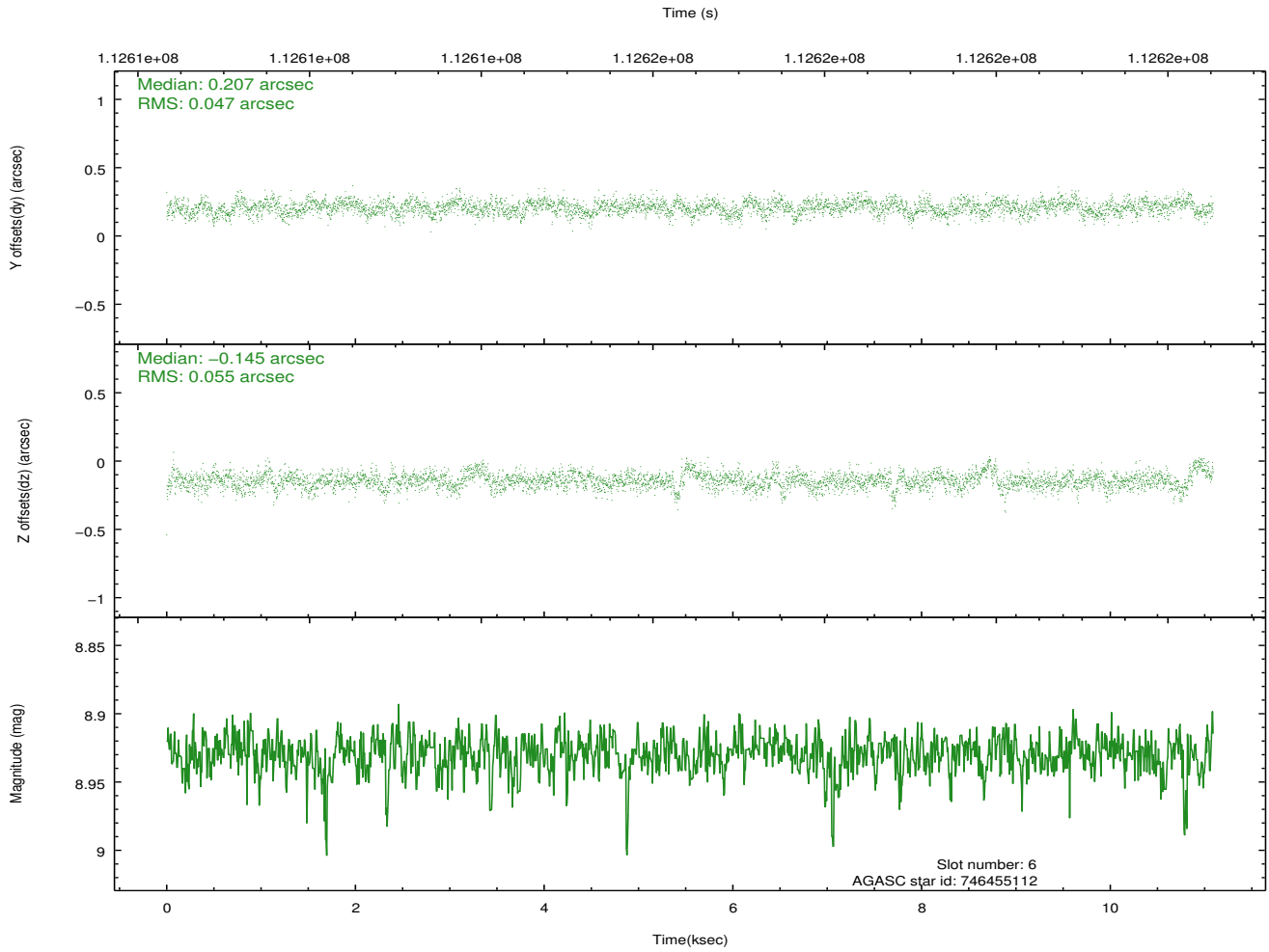
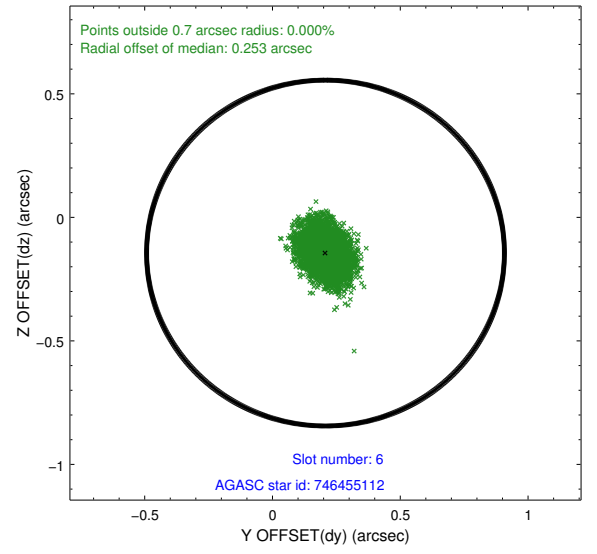
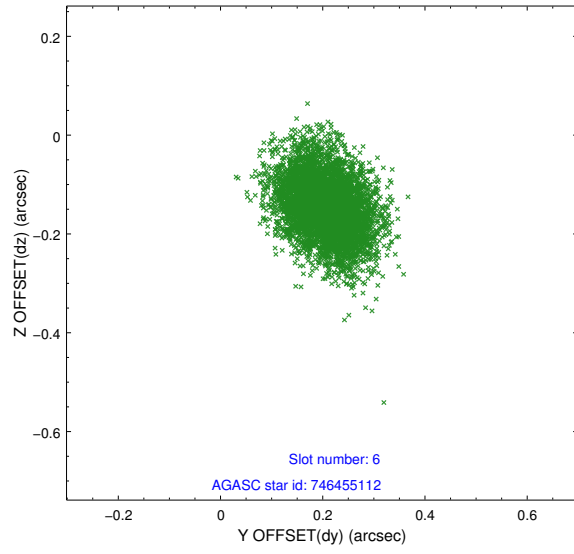
## 2.4.2 Slot 4



### 2.4.3 Slot 5

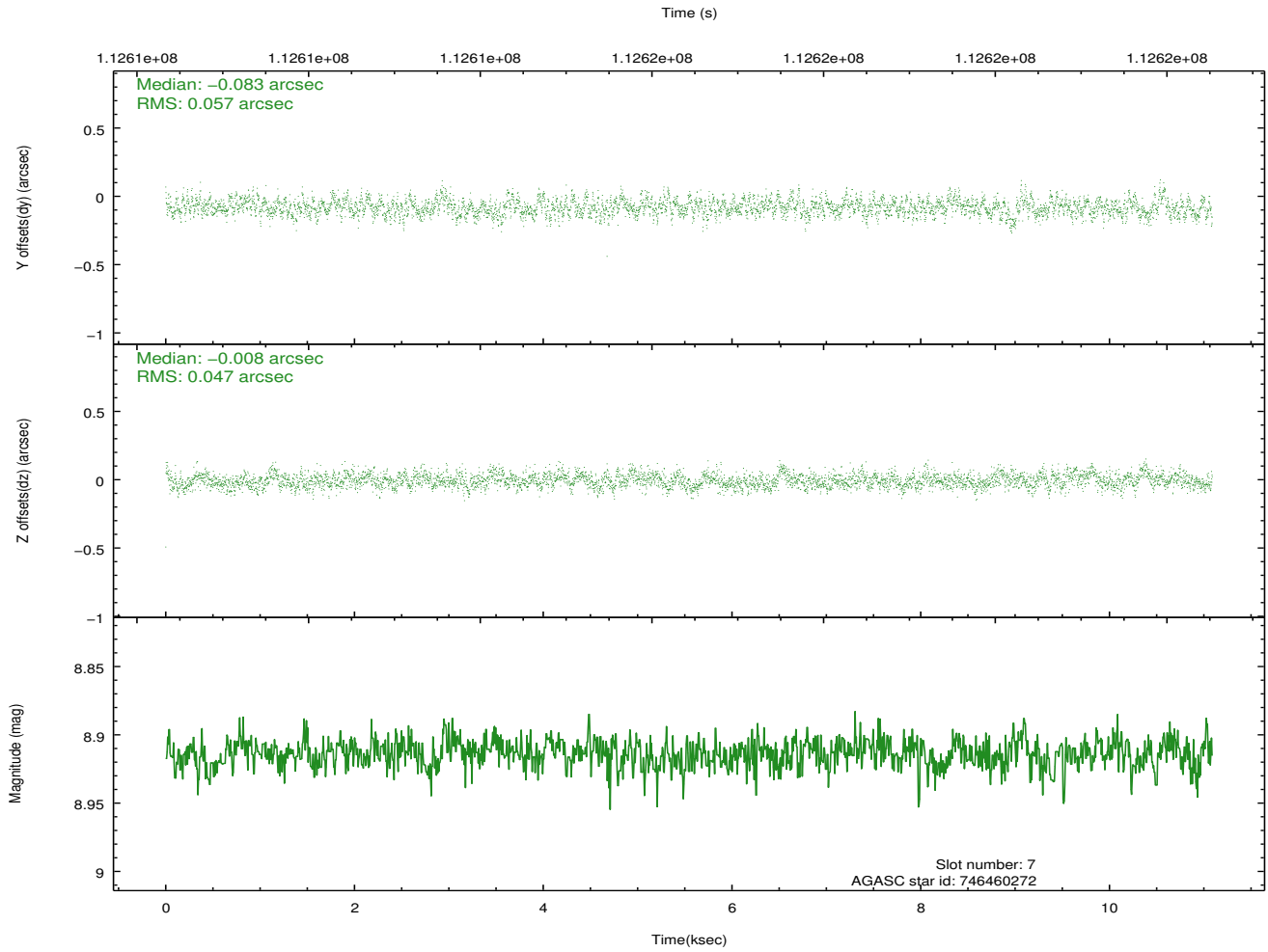
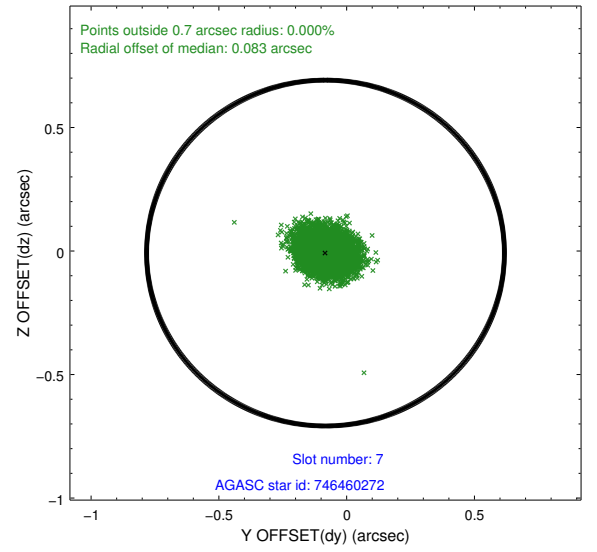
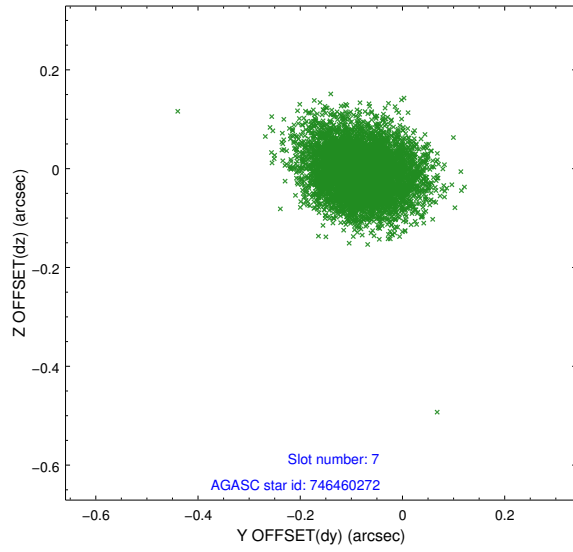


## 2.4.4 Slot 6



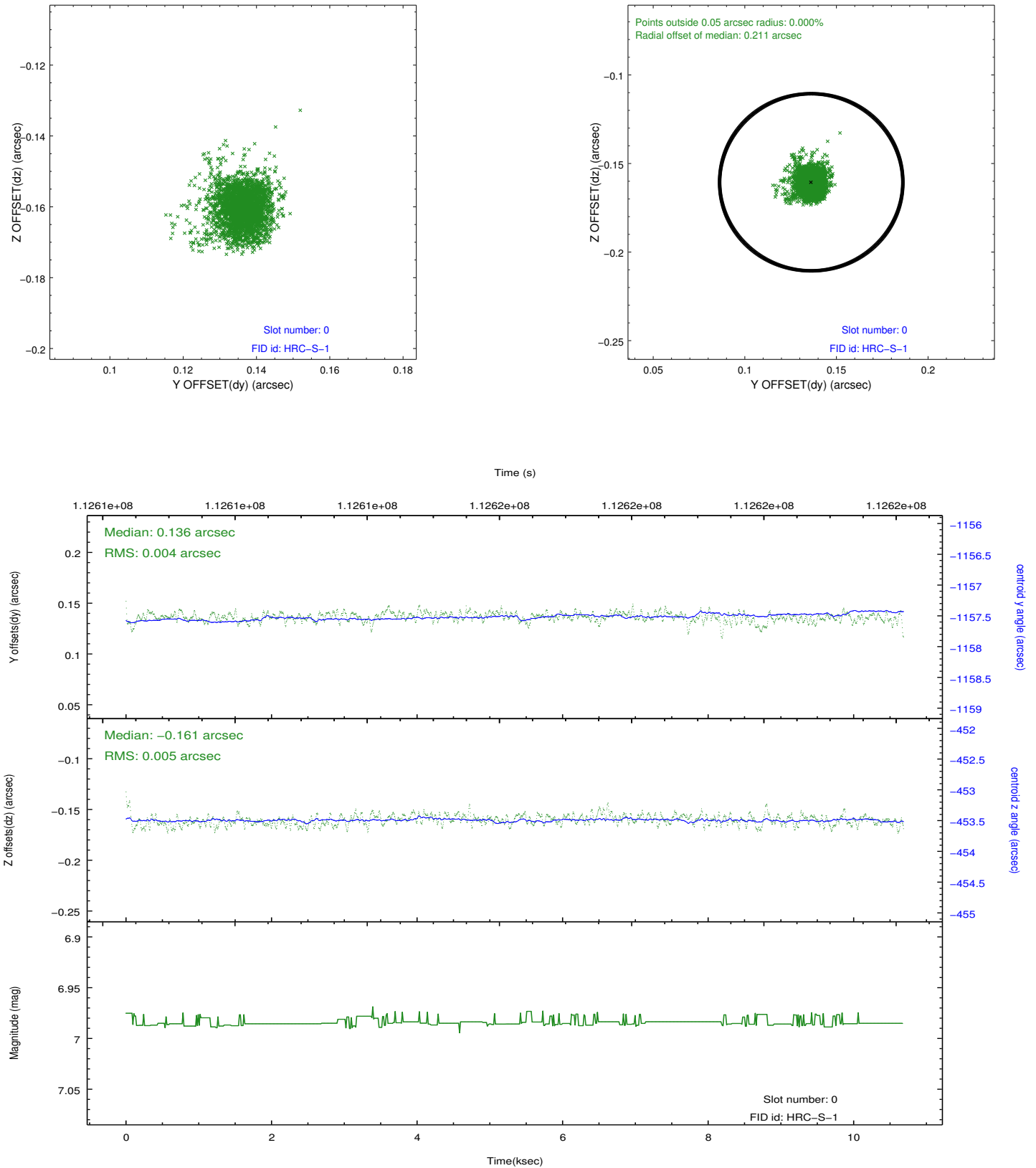


## 2.4.5 Slot 7

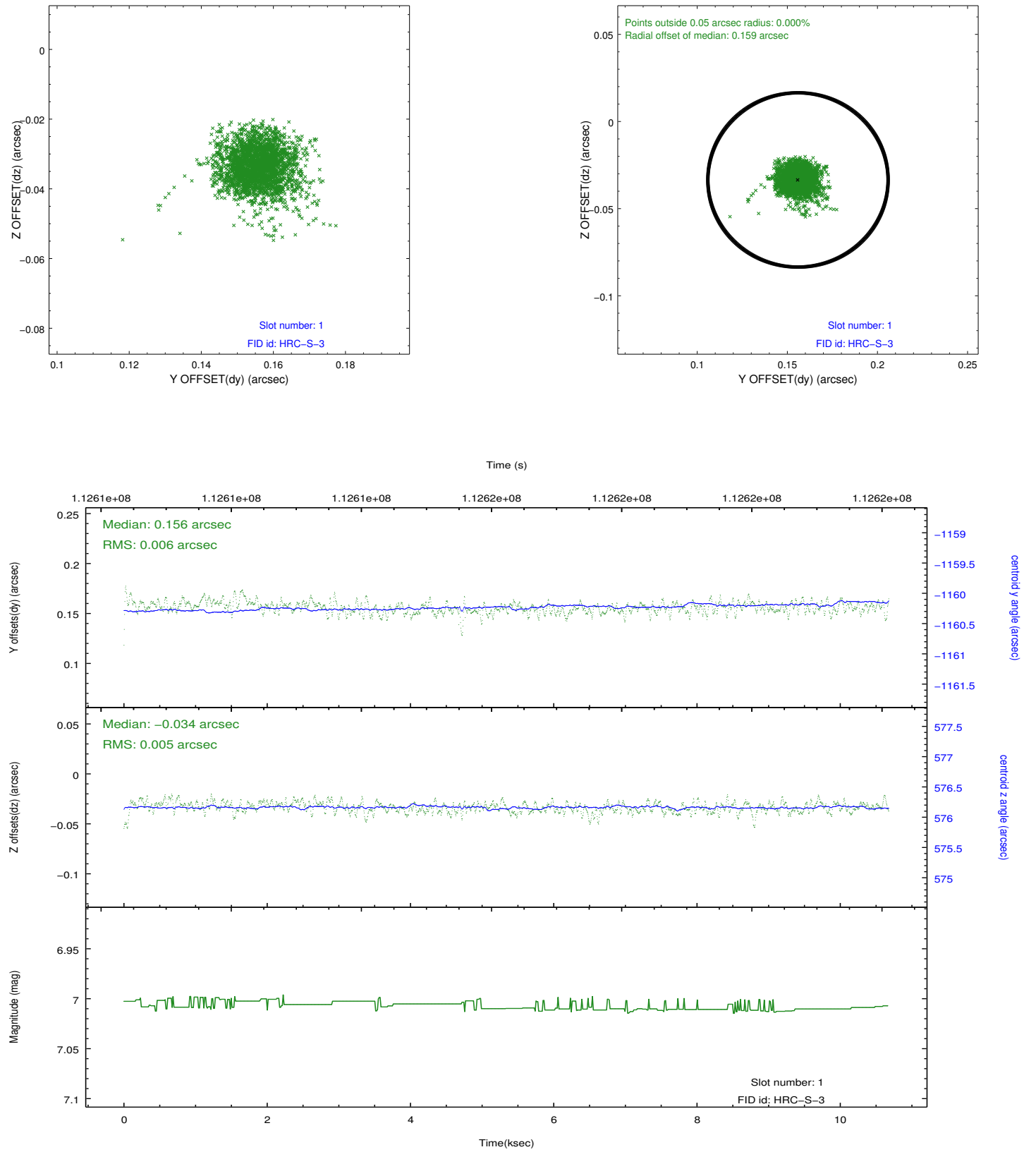


## 2.5 FID Slots

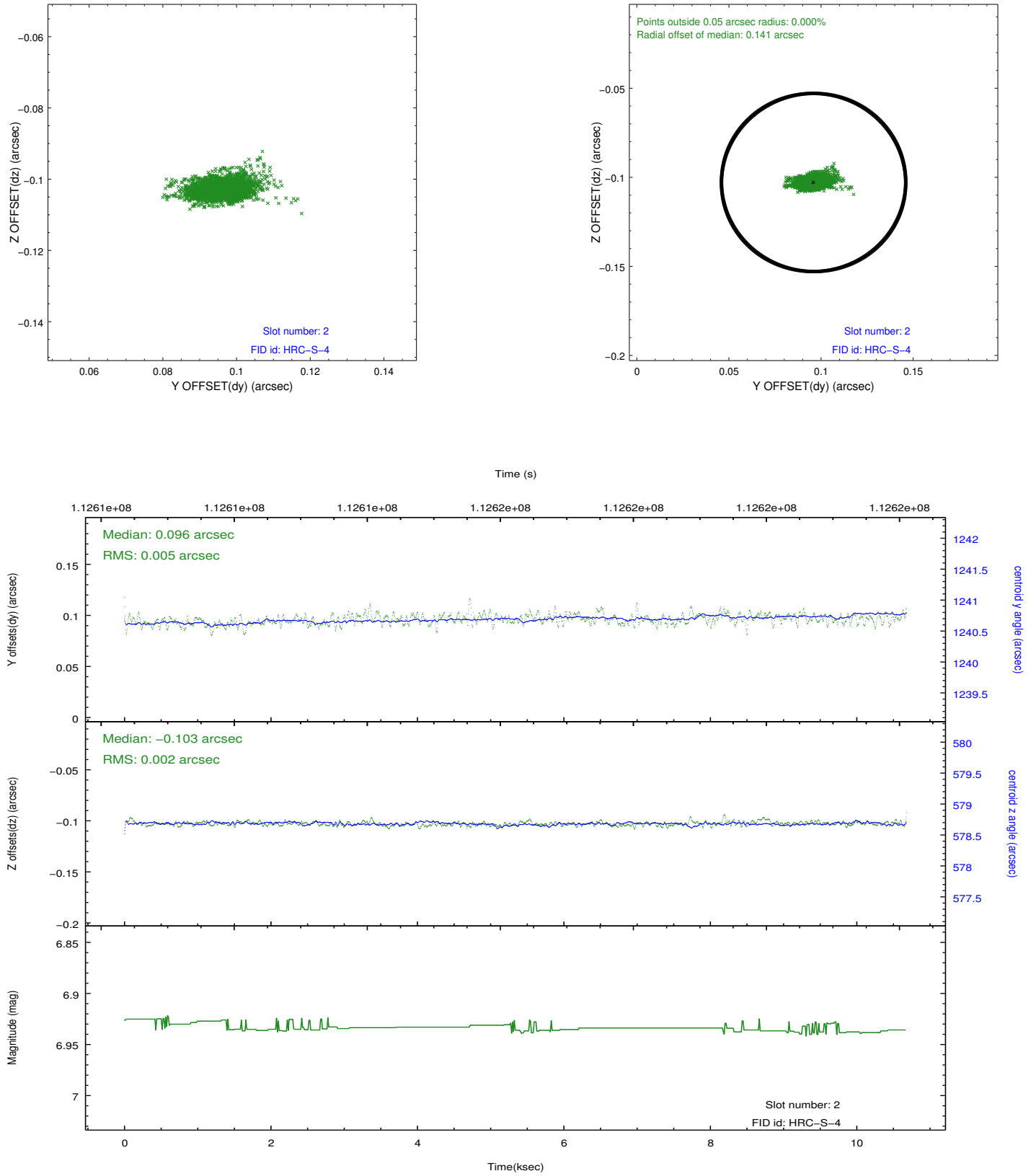
### 2.5.1 Slot 0



## 2.5.2 Slot 1



### 2.5.3 Slot 2



## A Summary

### A.1 Status

V&V Scientist	Beth Sundheim
V&V Date (YYYY-MM-DD)	2012.09.25
V&V Edition	1
V&V Disposition and Status	OK
V&V Charge Time	10.6

### A.2 Comments

Window preference met.