

V&V Reference Report

L2 ASCDS Version : 7.6.9

Observation 1558 - L2 Version 001
Chandra X-Ray Center

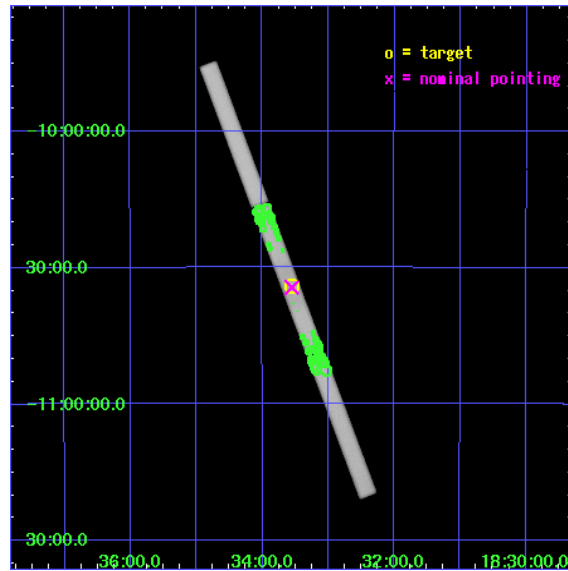
L2 Processing Date : Dec 15 2006

Contents

1	Front	2
2	OBI	3
2.1	OBI	3
2.1.1	Images	3
2.1.2	Parameters	4
2.1.3	Events	4
2.2	Compared Parameters	5
2.3	Aspect	6
2.4	Star Slots	9
2.4.1	Slot 3	9
2.4.2	Slot 4	10
2.4.3	Slot 5	11
2.4.4	Slot 6	12
2.4.5	Slot 7	13
2.5	FID Slots	14
2.5.1	Slot 0	14
2.5.2	Slot 1	15
2.5.3	Slot 2	16
3	Point Sources	17
A	Summary	18
A.1	Status	18
A.2	Comments	18

1 Front

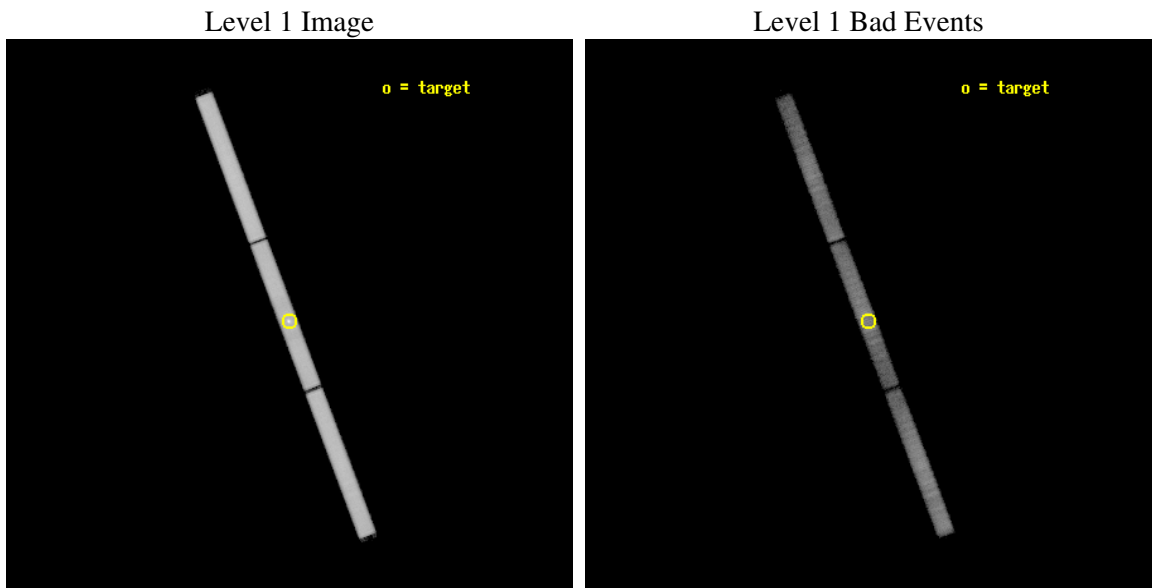
seq_num	590167
obs_id	1558
title	CALIBRATION OBSERVATIONS OF THE STANDARD CANDLE G21.5-09
observer	Dr. CXC Calibration
object	G21.5-0.9 [HRC-S, Offsets=0,0,0 Offsets=AO2B]
ra_targ	278.389583
dec_targ	-10.568528
ra_nom	278.38787277856
dec_nom	-10.572873733378
roll_nom	249.25577412328
revision	2
ontime	10590.556666151
livetime	10463.563130558
l2events	918069



2 OBI

2.1 OBI

2.1.1 Images



2.1.2 Parameters

obi_num	2
ascdsver	7.6.9
caldbver	3.2.4
date	2006-12-15T19:33:58
revision	2

sched_exp_time	10000.000000
ontime	10591.325416178
l1events	1197677

2.1.3 Events

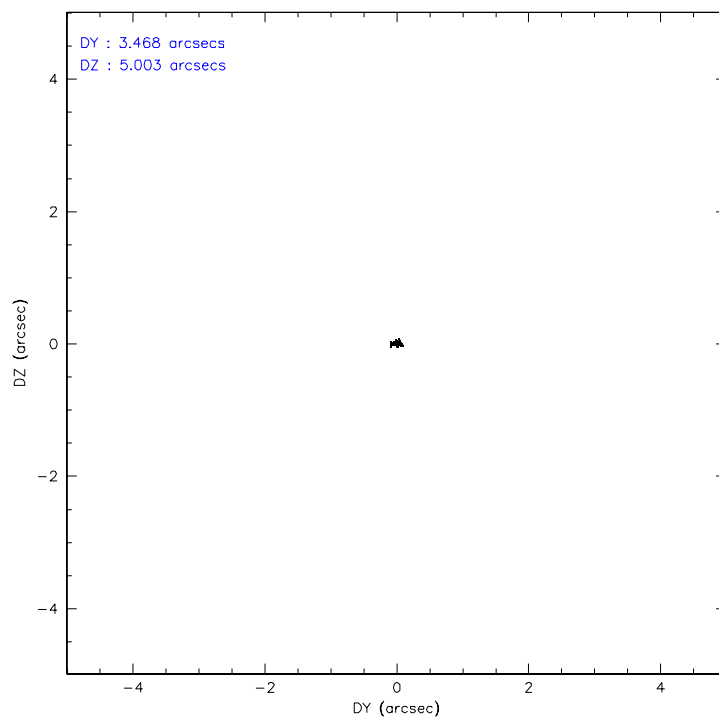
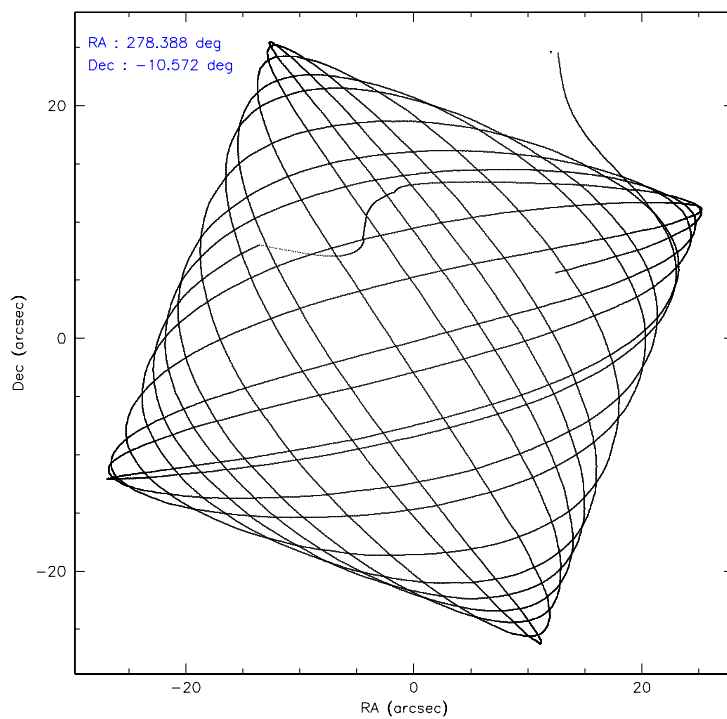
Level 1 Events

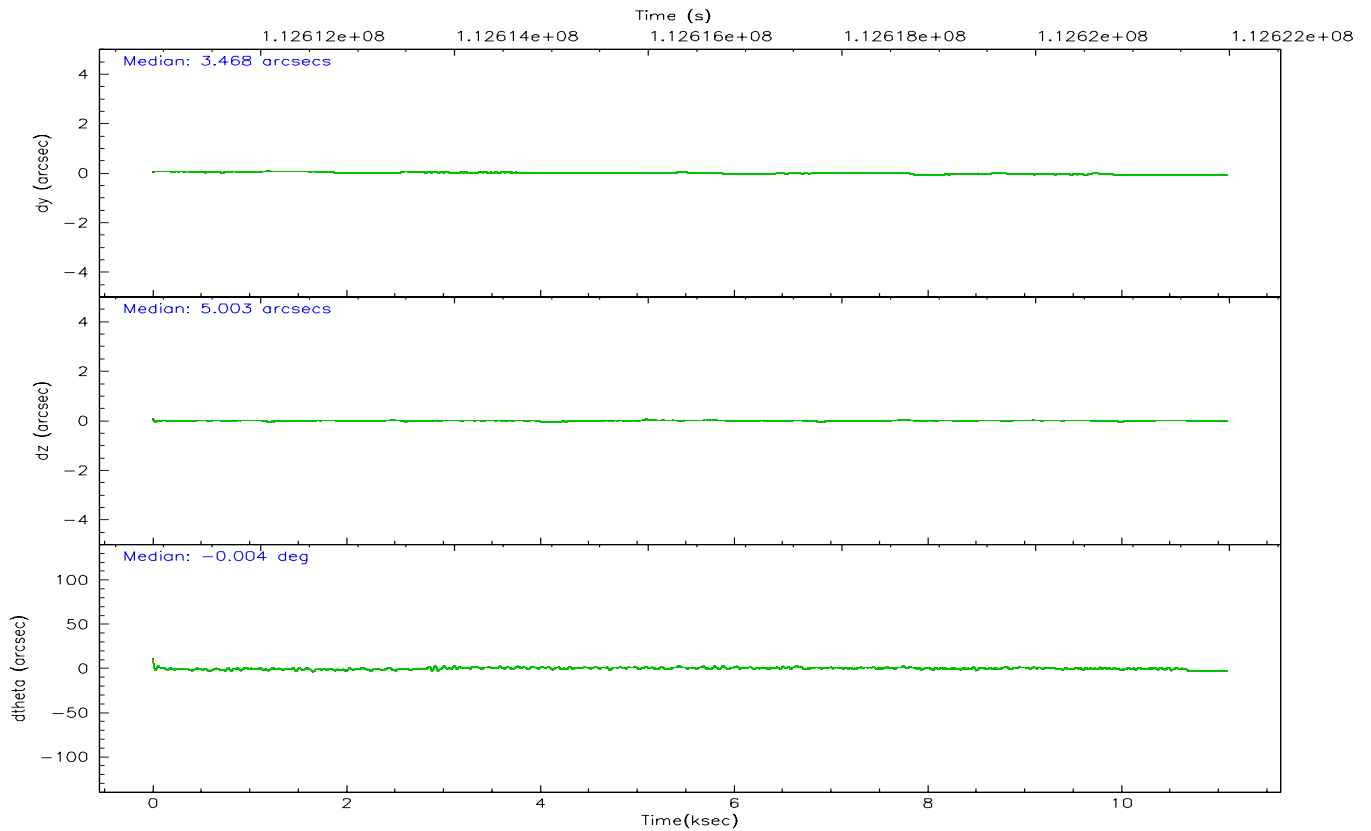
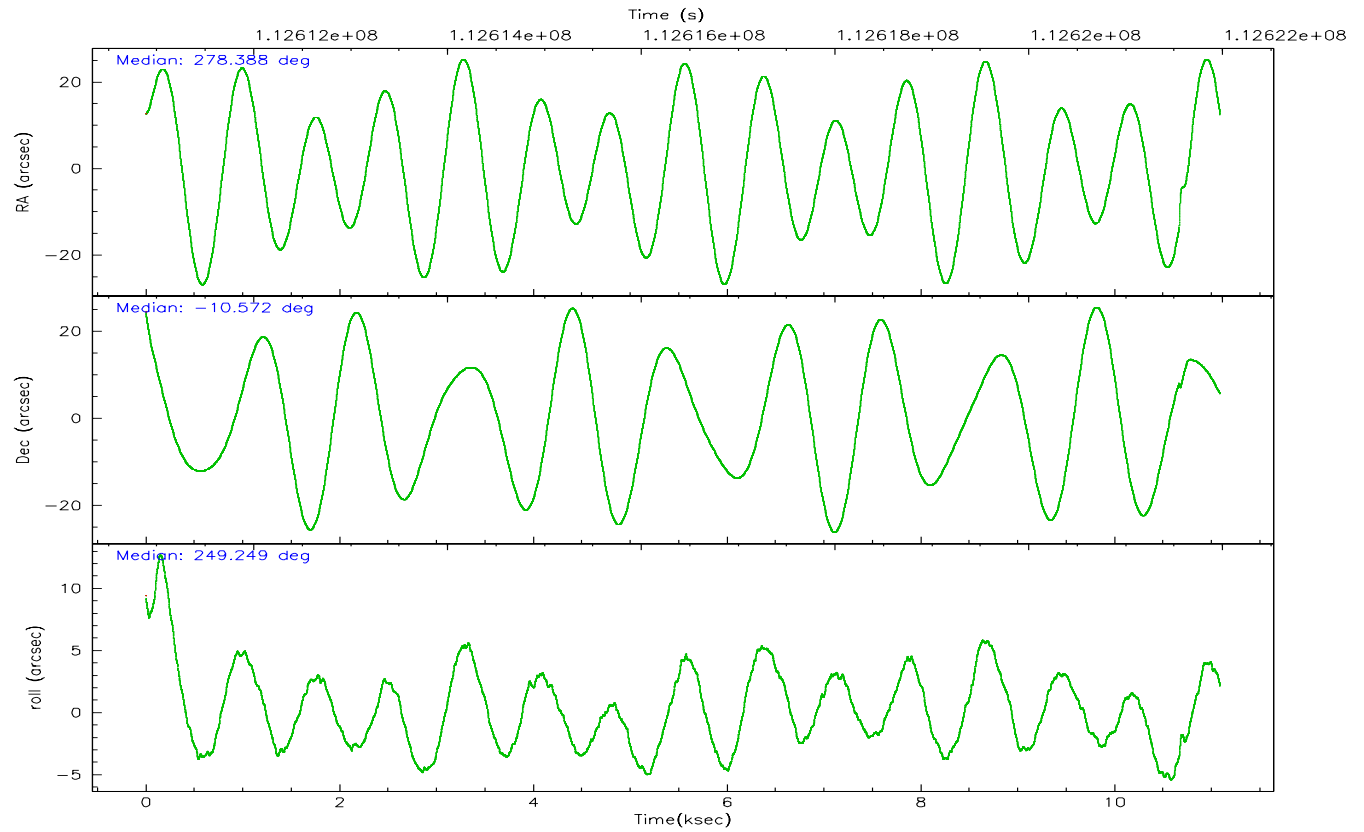
	segment 1	segment 2	segment 3
level 1 events	430939	375918	390820
rejected events	61213	64310	78418
rejected %	14%	17%	20%

2.2 Compared Parameters

Parameter	Planned	Actual	Parameter	Planned	Actual
Instrument	HRC	HRC	Obspar format version number	6	6
Detector	HRC-S	HRC-S	Obspar file type	PREDICTED	ACTUAL
Grating	NONE	NONE	Obspar update status	NONE	UPDATED
Data mode	OBSERVING	OBSERVING			
Observation mode	POINTING	POINTING			
Pointing RA	278.381668	278.3878727785591			
Pointing Dec	-10.544890	-10.57287373337822			
Pointing Roll	249.187300	249.2557741232808			
Window start time	110332864.184000	110332864.184000			
Window stop time	112838464.184000	112838464.184000			
SIM focus pos (mm)	-1.429586	-1.428180813131781			
SIM defocus (mm)	0.1037507710433287	0.1051558262725154			
SIM translation stage pos (mm)	250.455976	250.4635187648994			
SIM translation stage offset (mm)	0	-0.007540371344731511			
Observation start time	112611071.184000	112610019.72079			
Observation start date	2001-07-27T08:50:07	2001-07-27T08:33:39			
Observation end time	112621071.184000	112622321.77127			
Observation end date	2001-07-27T11:36:47	2001-07-27T11:58:41			

2.3 Aspect



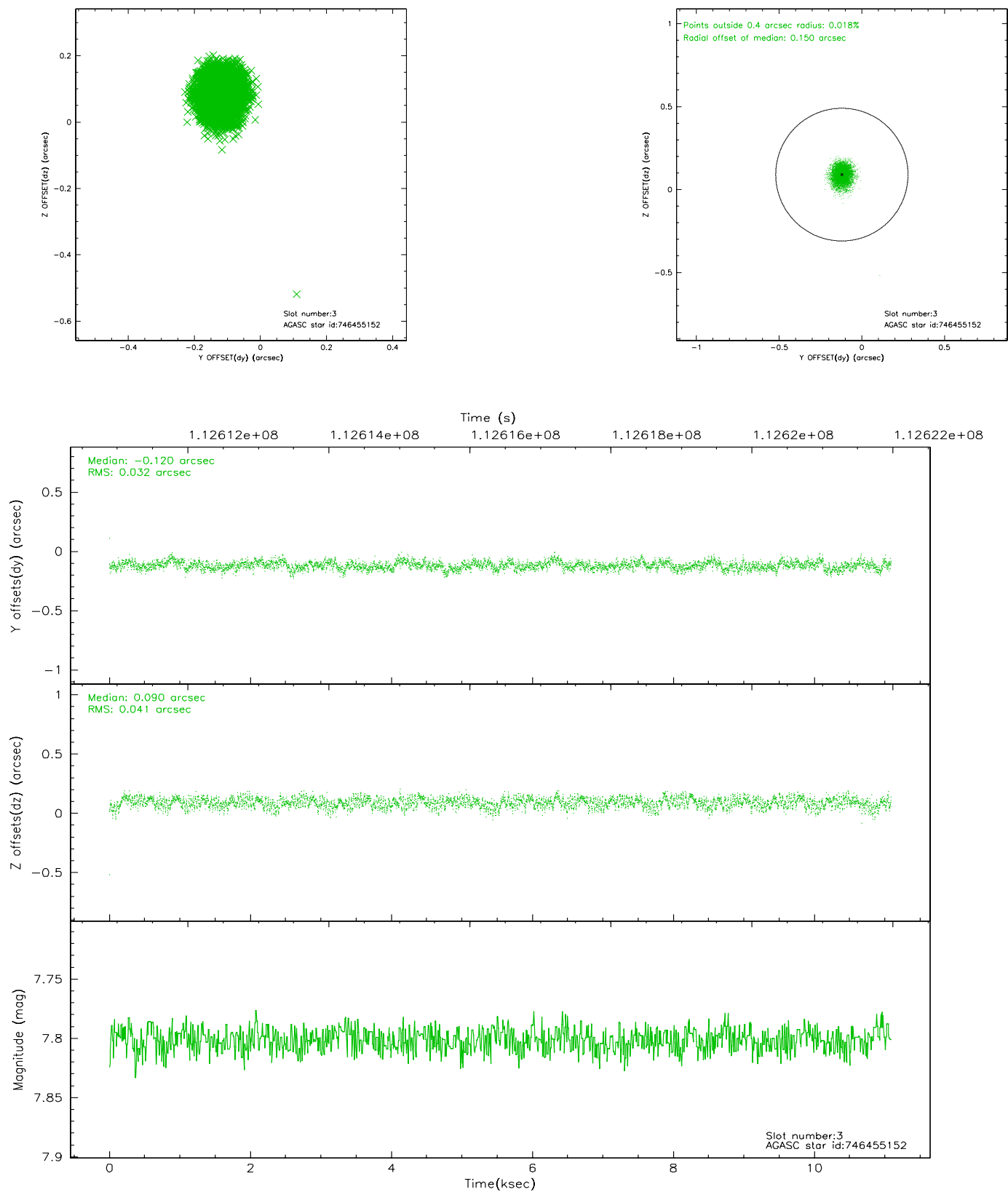


Slot Statistics

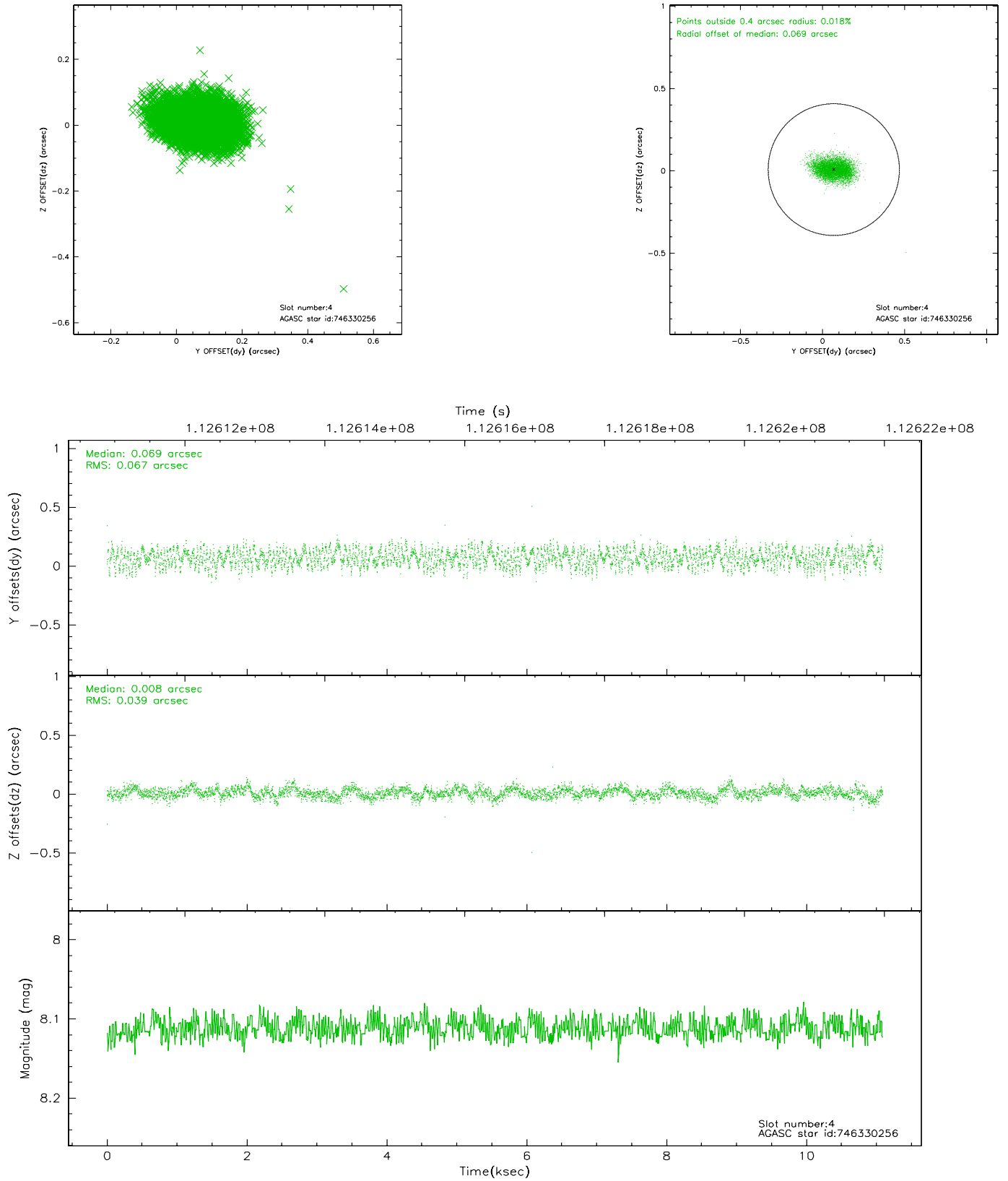
slot	status	id	mag	n_pts	med_dy	med_dz	dr1	dr2	ra	dec	mean_y	mean_z
0	FID	HRC-S-1	6.99	2606	0.136	-0.161	0.007	0.012	0.000000	0.000000	-1157.52	-453.50
1	FID	HRC-S-3	7.01	2605	0.156	-0.034	0.008	0.013	0.000000	0.000000	-1160.68	575.99
2	FID	HRC-S-4	6.93	2605	0.096	-0.103	0.005	0.010	0.000000	0.000000	1240.24	578.90
3	GUIDE	746455152	7.80	5408	-0.120	0.090	0.056	0.089	278.447893	-9.976732	-1993.96	-507.16
4	GUIDE	746330256	8.11	5406	0.069	0.008	0.082	0.130	277.634401	-10.863955	2016.81	-2059.96
5	GUIDE	746462456	8.39	5409	-0.074	0.054	0.061	0.100	278.652171	-10.530173	-387.52	876.25
6	GUIDE	746455112	8.93	5403	0.207	-0.145	0.076	0.127	278.266531	-10.703234	679.12	-177.73
7	GUIDE	746460272	8.91	5406	-0.083	-0.008	0.078	0.127	278.847488	-10.152127	-1905.74	1041.04

2.4 Star Slots

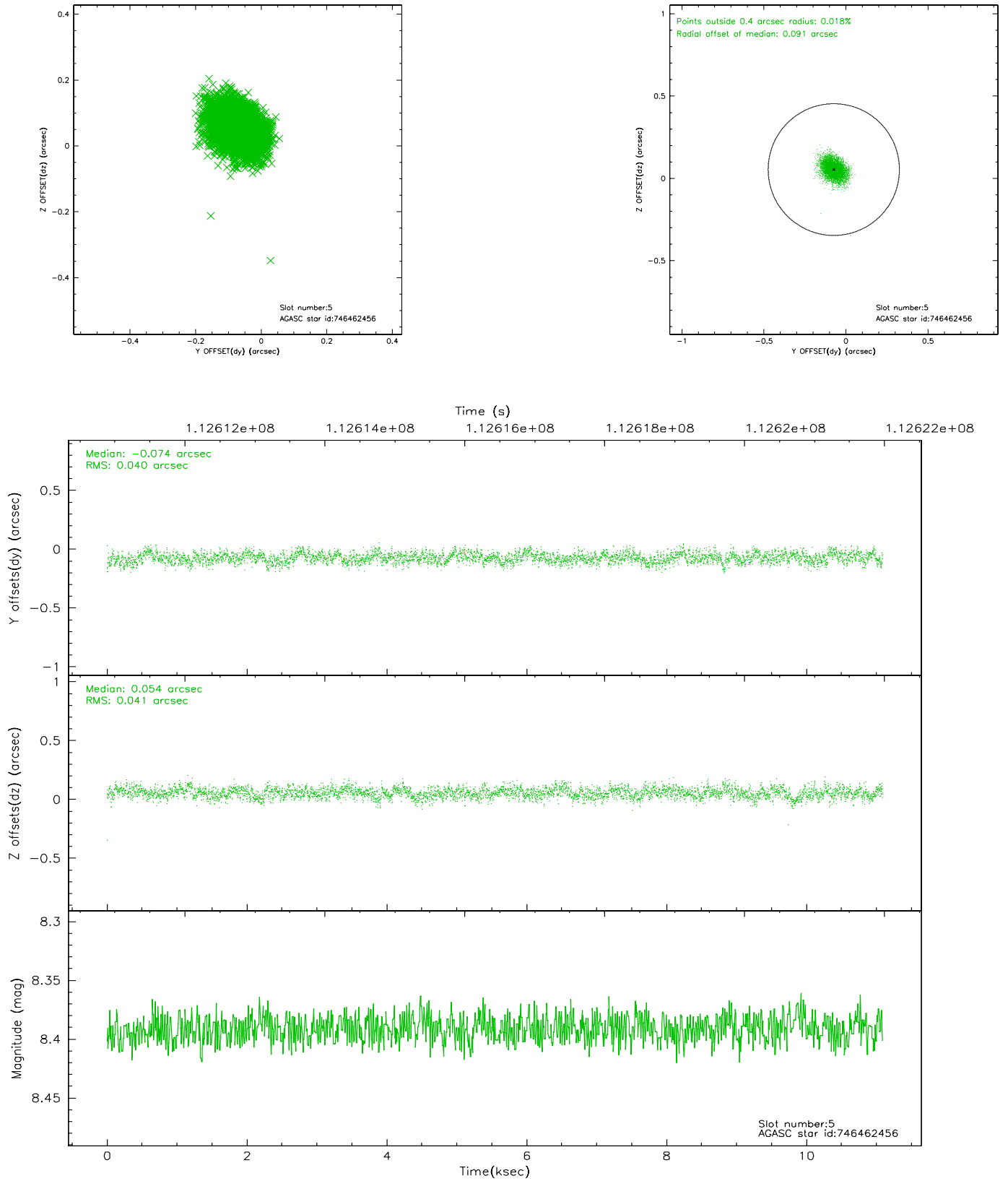
2.4.1 Slot 3



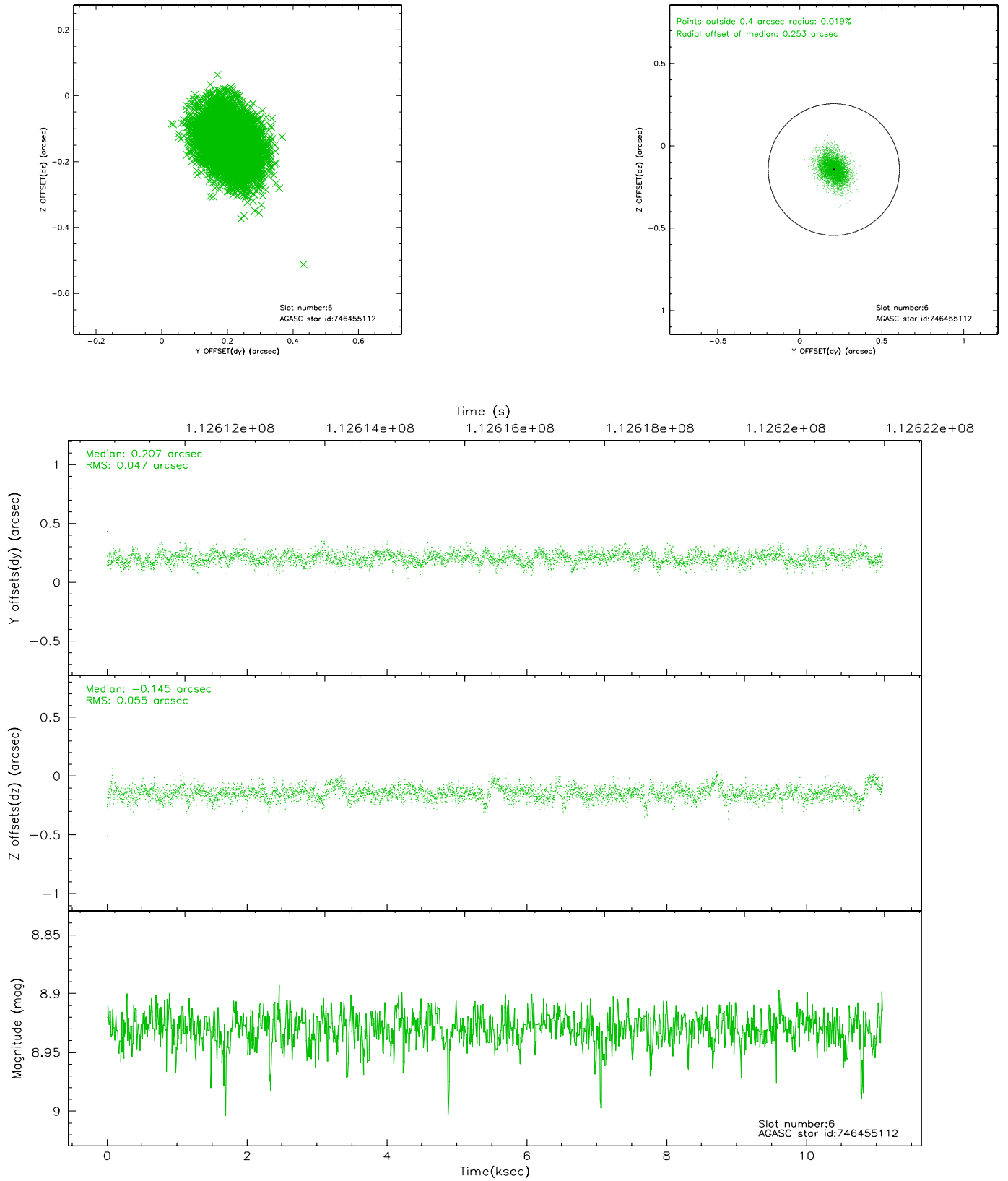
2.4.2 Slot 4



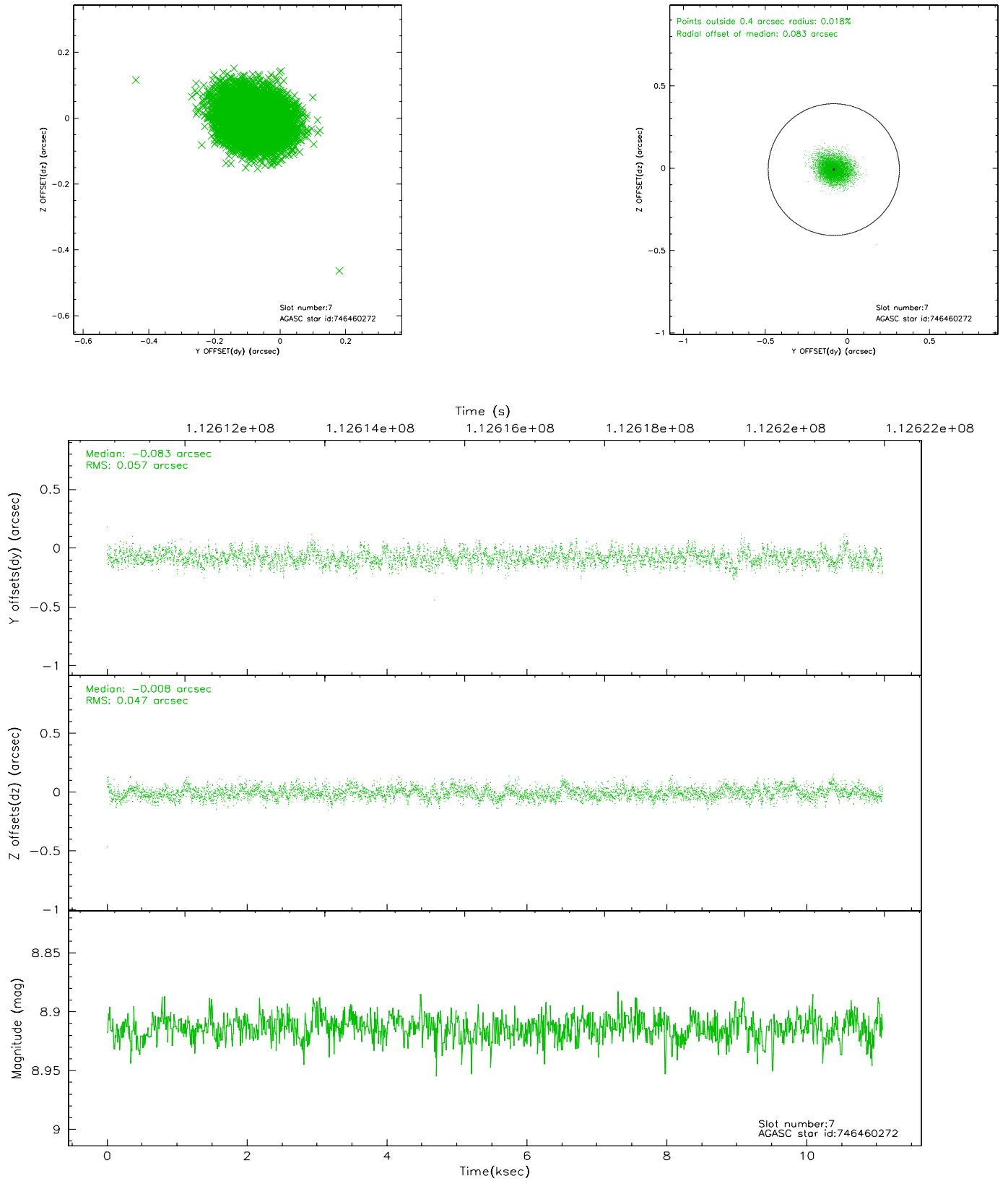
2.4.3 Slot 5



2.4.4 Slot 6

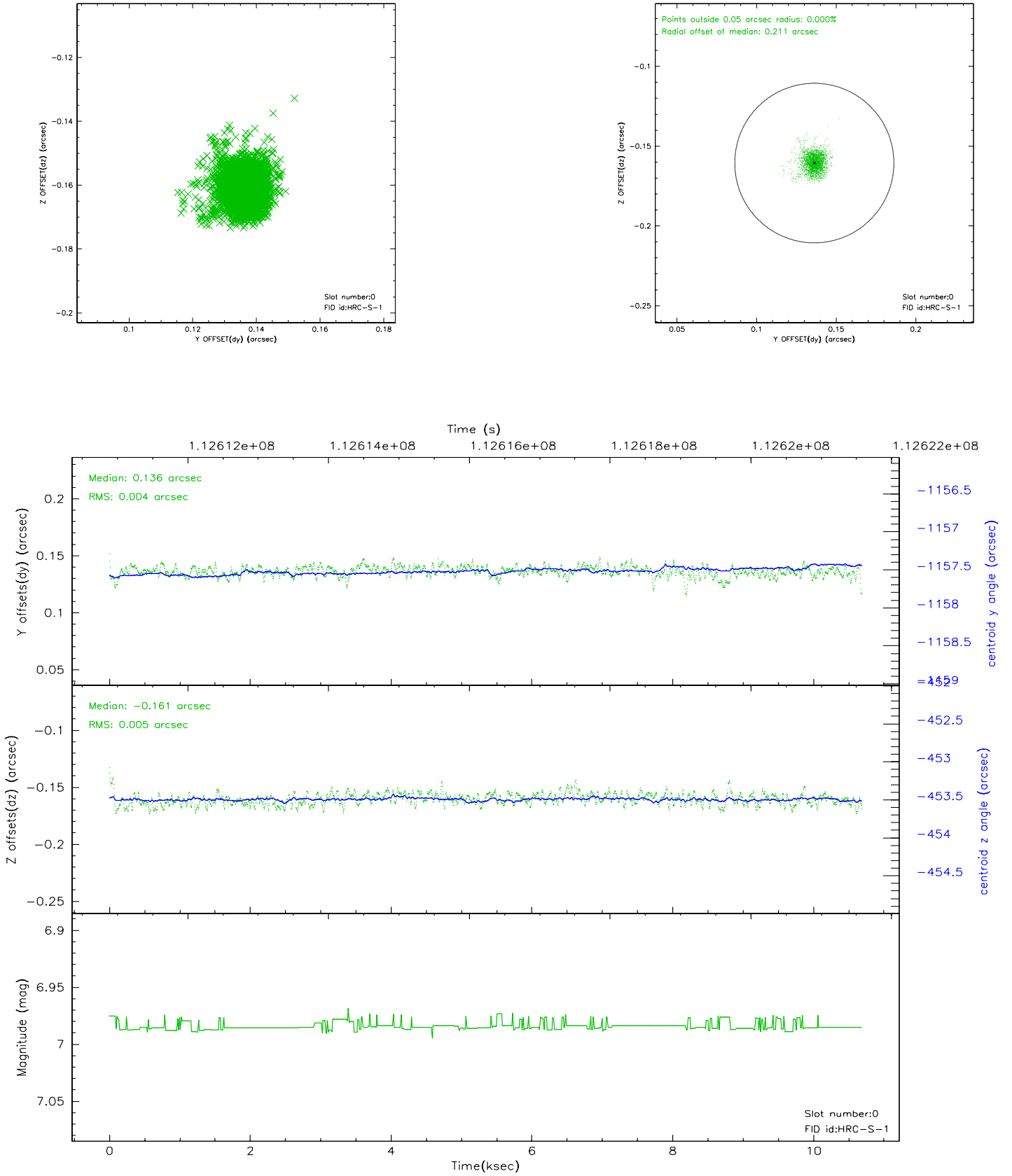


2.4.5 Slot 7

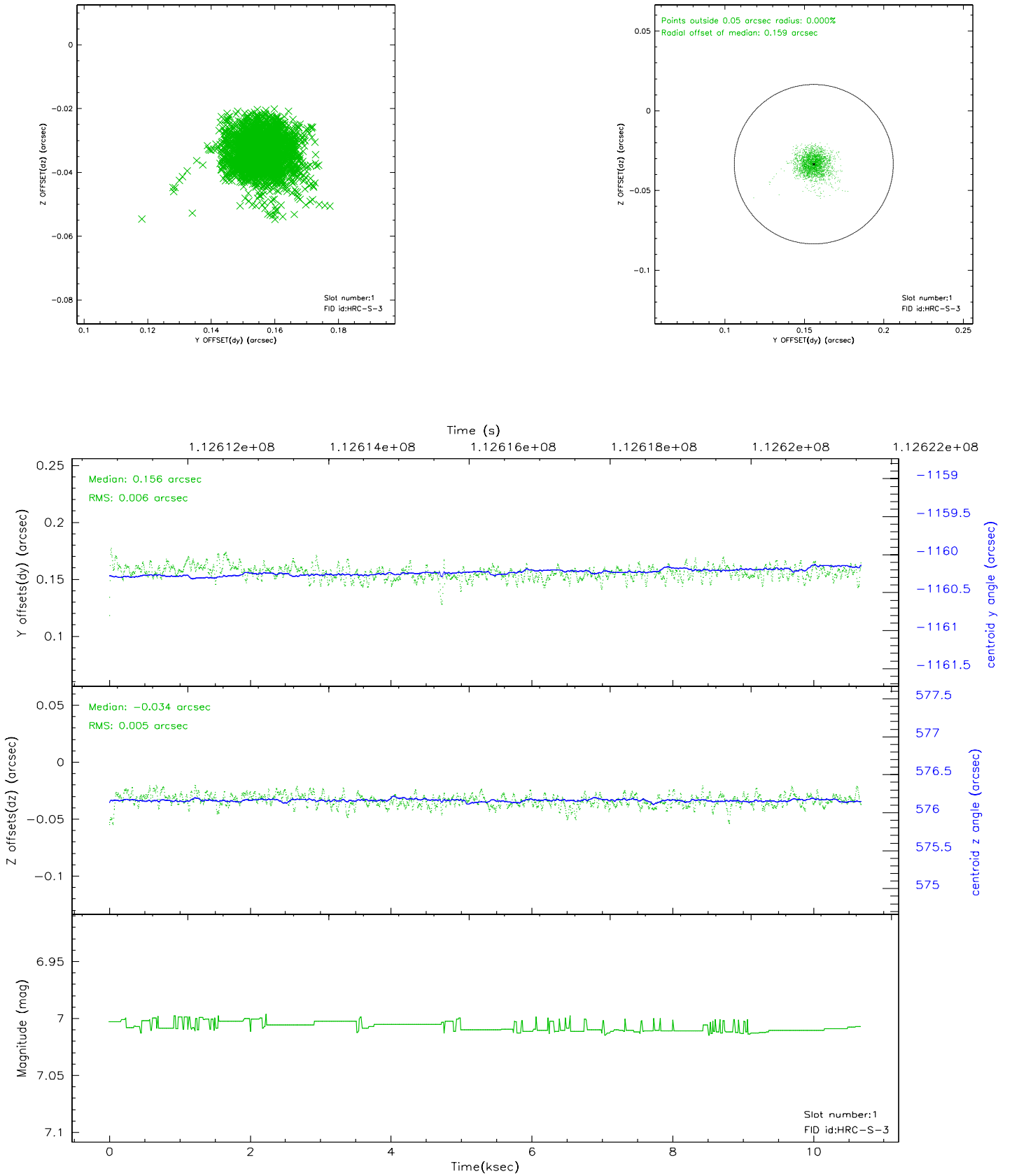


2.5 FID Slots

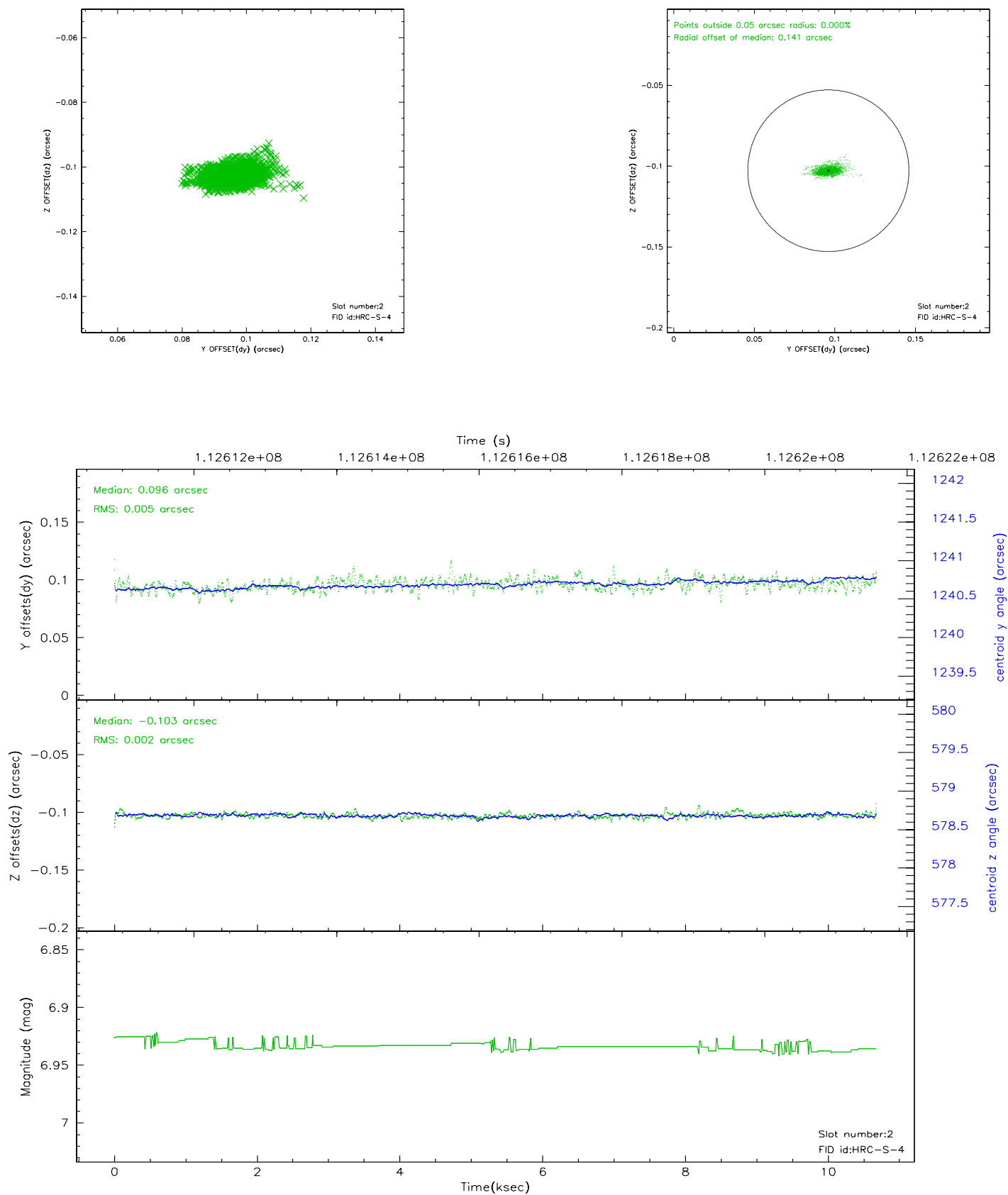
2.5.1 Slot 0



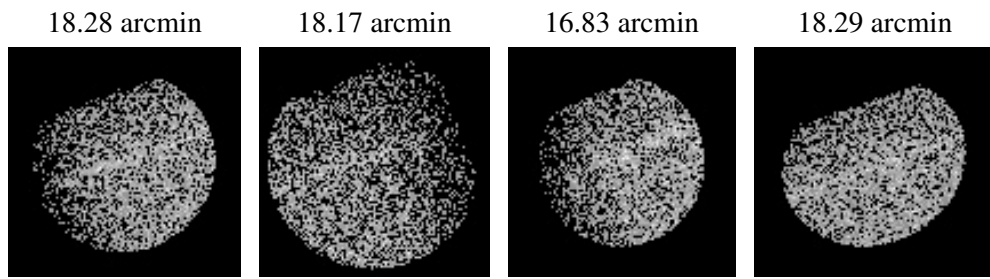
2.5.2 Slot 1



2.5.3 Slot 2



3 Point Sources



A Summary

A.1 Status

V&V Scientist	Beth Sundheim
V&V Date (YYYY-MM-DD)	2006.12.17
V&V Edition	1
V&V Disposition and Status	OK
V&V Charge Time	10.6

A.2 Comments

Window constraint satisfied.