

V&V Reference Report

L2 ASCDS Version : 8.4.5

Observation 1556 - L2 Version 4
Chandra X-Ray Center

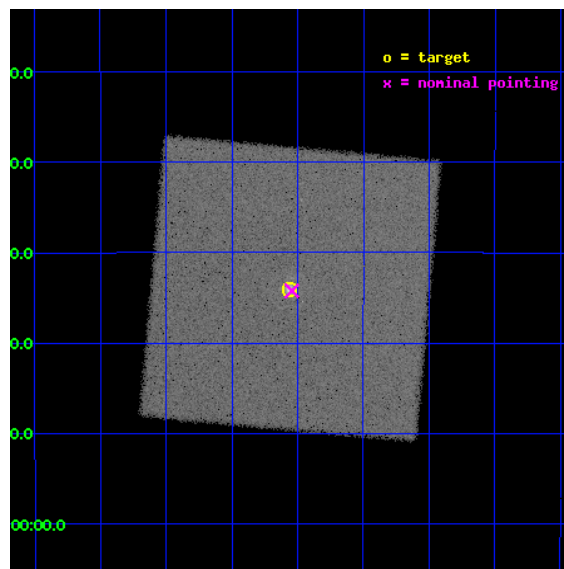
L2 Processing Date : Sep 20 2012

Contents

1	Front	2
2	OBI	3
2.1	OBI	3
2.1.1	Images	3
2.1.2	Parameters	4
2.1.3	Events	4
2.2	Compared Parameters	5
2.3	Aspect	6
2.4	Star Slots	9
2.4.1	Slot 3	9
2.4.2	Slot 4	10
2.4.3	Slot 5	11
2.4.4	Slot 6	12
2.4.5	Slot 7	13
2.5	FID Slots	14
2.5.1	Slot 0	14
2.5.2	Slot 1	15
2.5.3	Slot 2	16
A	Summary	17
A.1	Status	17
A.2	Comments	17

1 Front

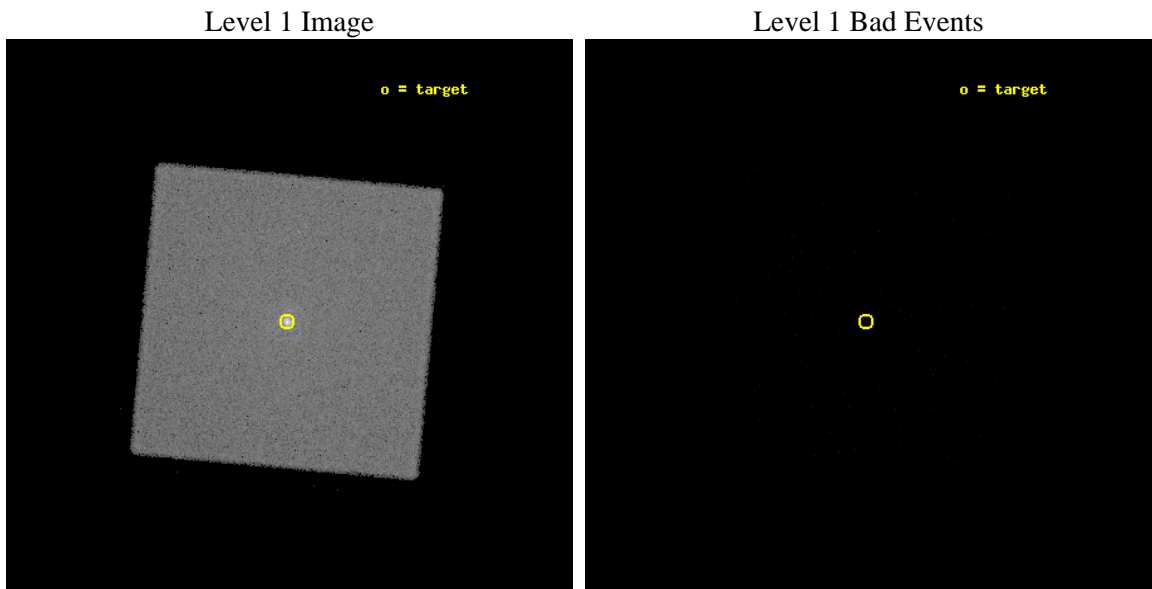
seq_num	590165	Sequence number
obs_id	1556	Observation id
title	CALIBRATION OBSERVATIONS OF THE STANDARD CANDLE G21.5-09	Proposal
observer	Dr. CXC Calibration	Principal investigator
object	G21.5-0.9 [HRC-I, Offsets=0,0,0 Offsets=AO2B]	Source name
ra_targ	278.389583	Observer's specified target RA [deg]
dec_targ	-10.568528	Observer's specified target Dec [deg]
ra_nom	278.38586968397	Nominal RA [deg]
dec_nom	-10.570460629797	Nominal Dec [deg]
roll_nom	230.15934480287	Nominal Roll [deg]
revision	4	Processing version of data
ontime	10156.725397289	[s]
livetime	10102.866075382	Ontime multiplied by DTCOR
l2events	270383	Number of level 2 events



2 OBI

2.1 OBI

2.1.1 Images



2.1.2 Parameters

obi_num	0	Obi number	sched_exp_time	10000.000000	[s] Scheduled observation exposure time
ascdsver	8.4.5	Processing system revision	ontime	10156.725397289	[s]
caldsver	4.5.1.1	 	l1events	419623	Number of level 1 events
date	2012-09-20T05:15:50	Date and time of file creation			
revision	4	Processing version of data			

2.1.3 Events

Level 1 Events

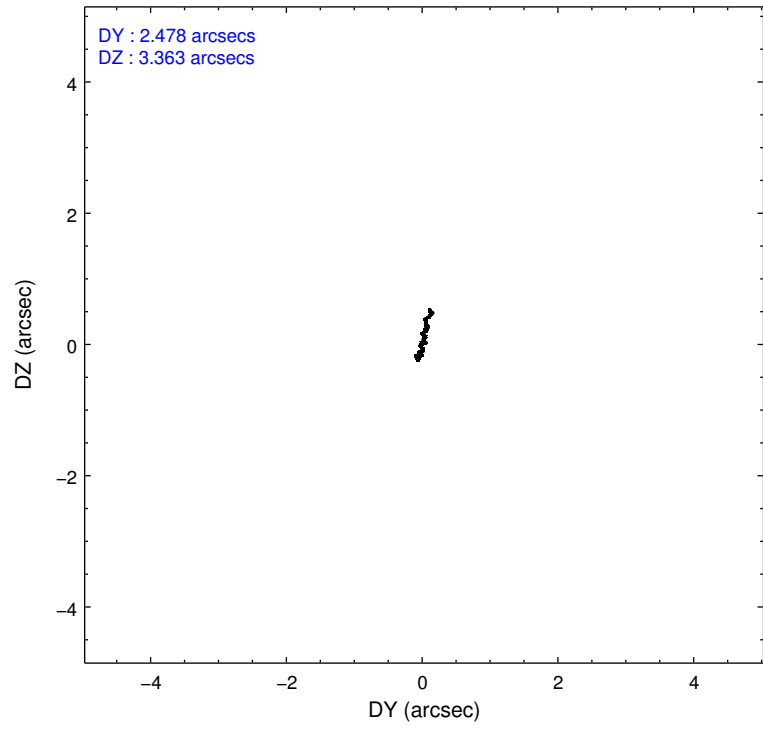
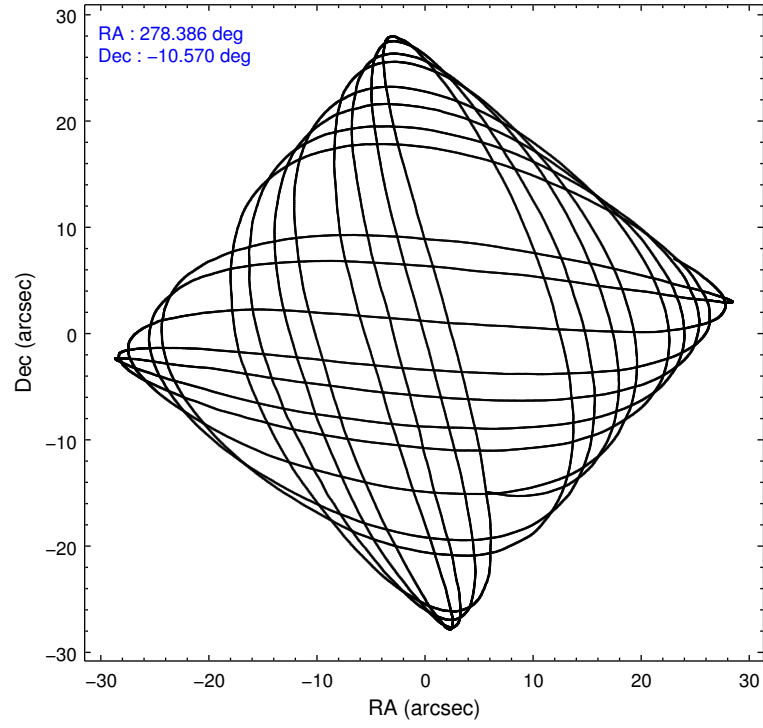
	segment 0
level 1 events	419623
rejected events	13314
rejected %	3%

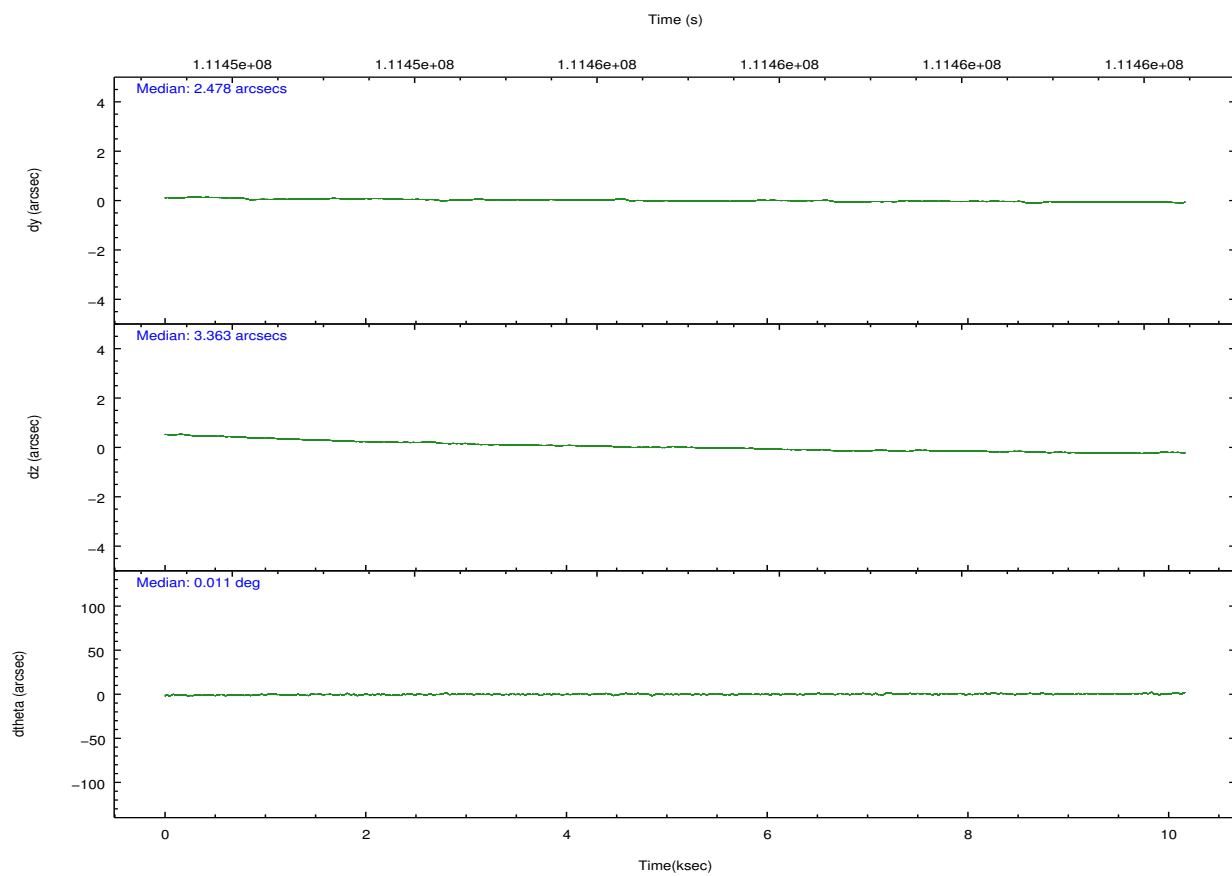
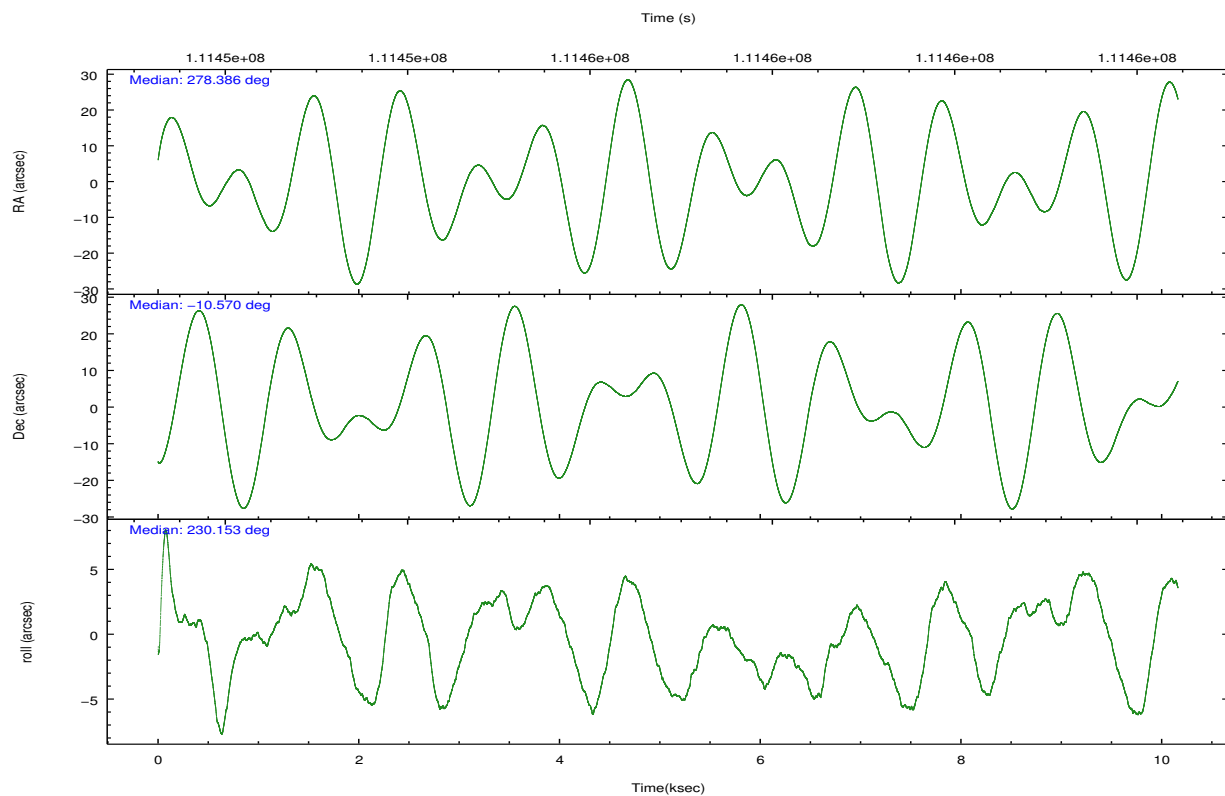
2.2 Compared Parameters

Parameter	Planned	Actual
Instrument	HRC	HRC
Detector	HRC-I	HRC-I
Grating	NONE	NONE
Data mode	OBSERVING	OBSERVING
Observation mode	POINTING	POINTING
[deg] Pointing RA	278.389896	278.38586968397
[deg] Pointing Dec	-10.543650	-10.57046062979672
[deg] Pointing Roll	230.255571	230.15934480287
[s] Window start time (MET)	110332864.184000	110332864.184000
[s] Window stop time (MET)	112838464.184000	112838464.184000
[mm] SIM focus pos	-1.040293	-1.038866356238299
[mm] SIM defocus	0	0.001426264420575141
[mm] SIM translation stage pos	126.985494	126.9829799899862
[mm] SIM translation stage offset	0	0.002508901615314585
[s] Observation start time (MET)	111451938.184000	111451527.77542
Observation start date	2001-07-13T22:51:14	2001-07-13T22:45:27
[s] Observation end time (MET)	111461938.184000	111462670.03835
Observation end date	2001-07-14T01:37:54	2001-07-14T01:51:10

Parameter	Planned	Actual
Obspar format version number	7	7
Obspar file type	PREDICTED	ACTUAL
Obspar update status	NONE	UPDATED

2.3 Aspect



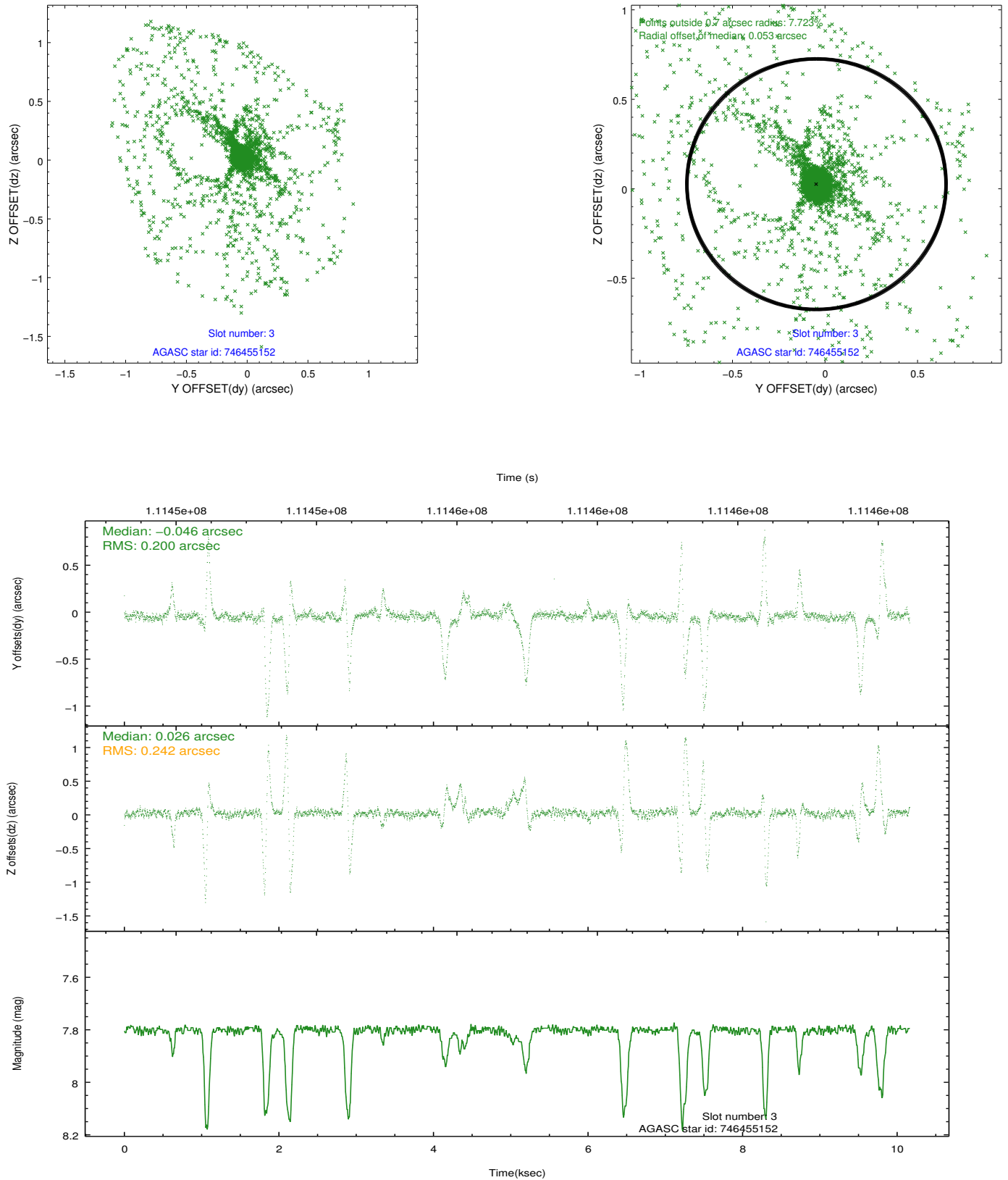


Slot Statistics

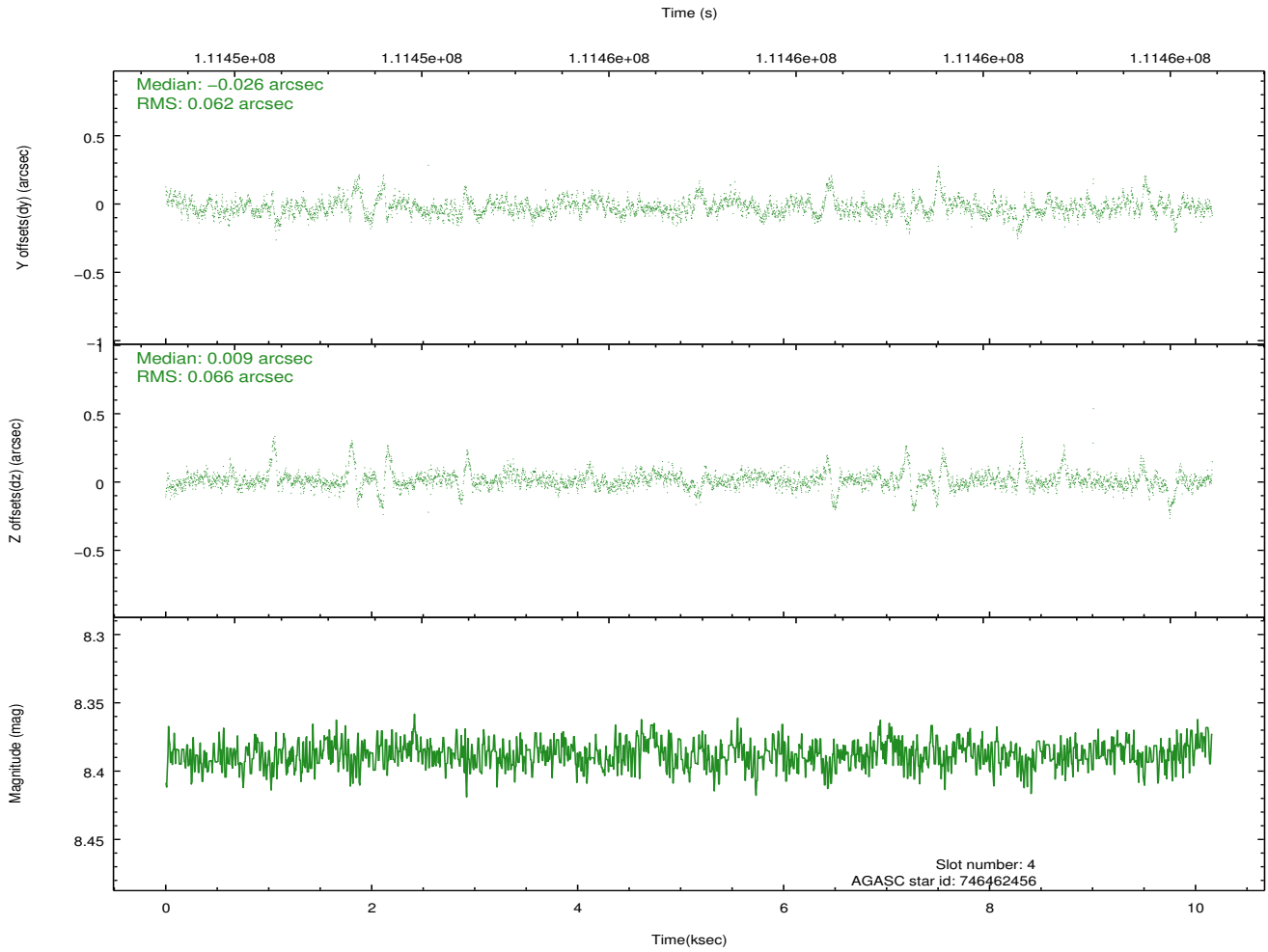
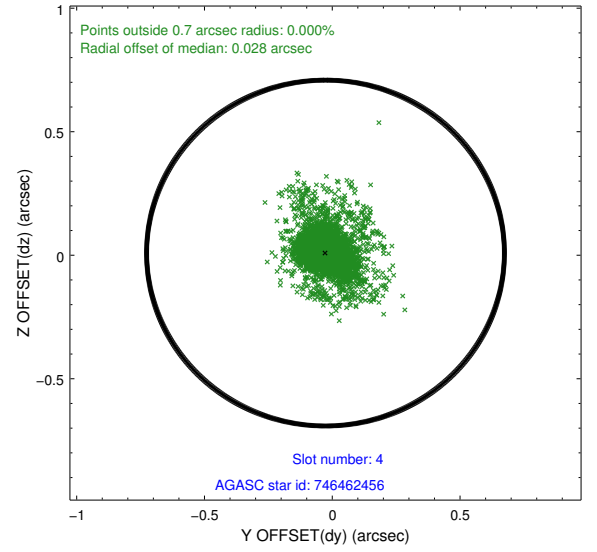
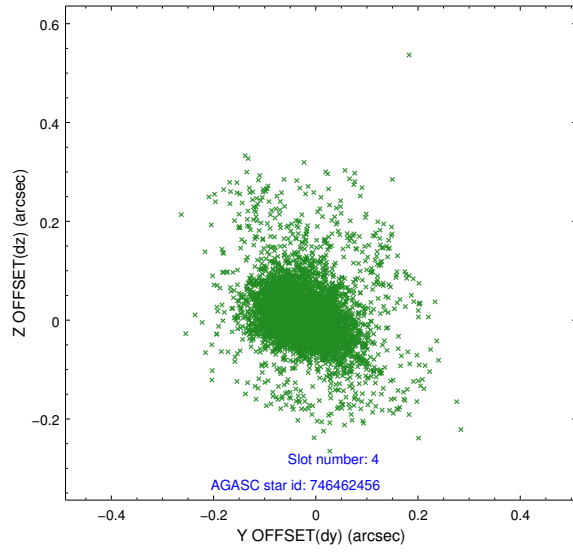
slot	status	id	mag	n_pts	med_dy	med_dz	dr1	dr2	ra	dec	mean_y	mean_z
0	FID	HRC-I-1	6.99	2478	0.070	0.041	0.011	0.019	0.000000	0.000000	-757.93	-1291.07
1	FID	HRC-I-3	7.07	2478	0.004	-0.056	0.012	0.022	0.000000	0.000000	-1186.70	1012.89
2	FID	HRC-I-4	7.02	2478	0.040	-0.073	0.007	0.011	0.000000	0.000000	1284.44	1011.32
3	GUIDE	746455152	7.81	4933	-0.046	0.026	0.075	0.850	278.447893	-9.976732	-1699.66	-1146.30
4	GUIDE	746462456	8.39	4955	-0.026	0.009	0.081	0.189	278.652171	-10.530173	-629.85	683.52
5	GUIDE	746460272	8.92	4955	0.013	-0.084	0.082	0.207	278.847488	-10.152127	-2118.79	346.87
6	GUIDE	746460328	9.81	4953	0.055	0.027	0.126	0.219	278.603974	-9.898096	-2271.35	-901.42
7	GUIDE	746461728	9.79	4943	0.019	0.016	0.135	0.240	278.986921	-10.530755	-1384.84	1596.72

2.4 Star Slots

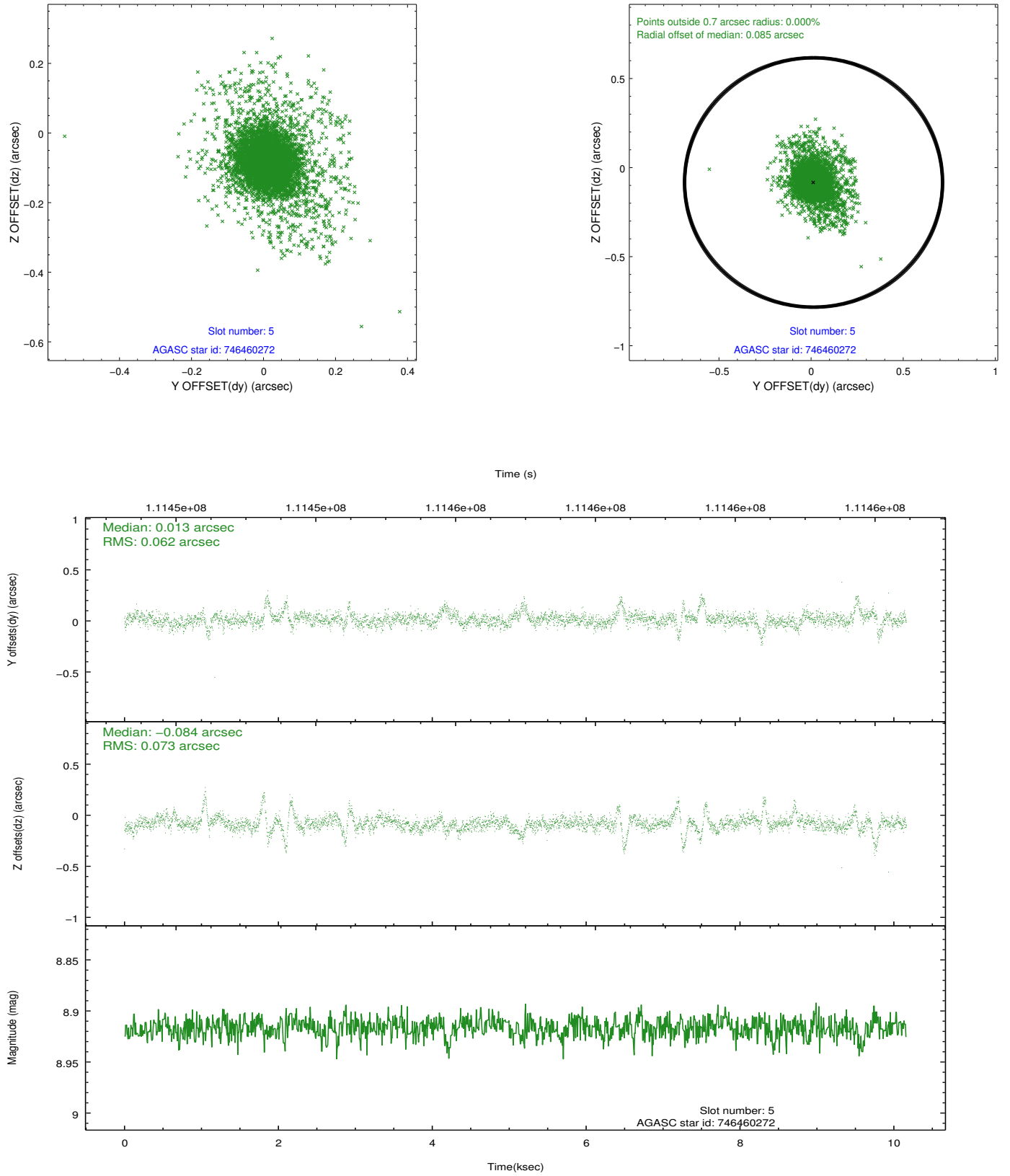
2.4.1 Slot 3



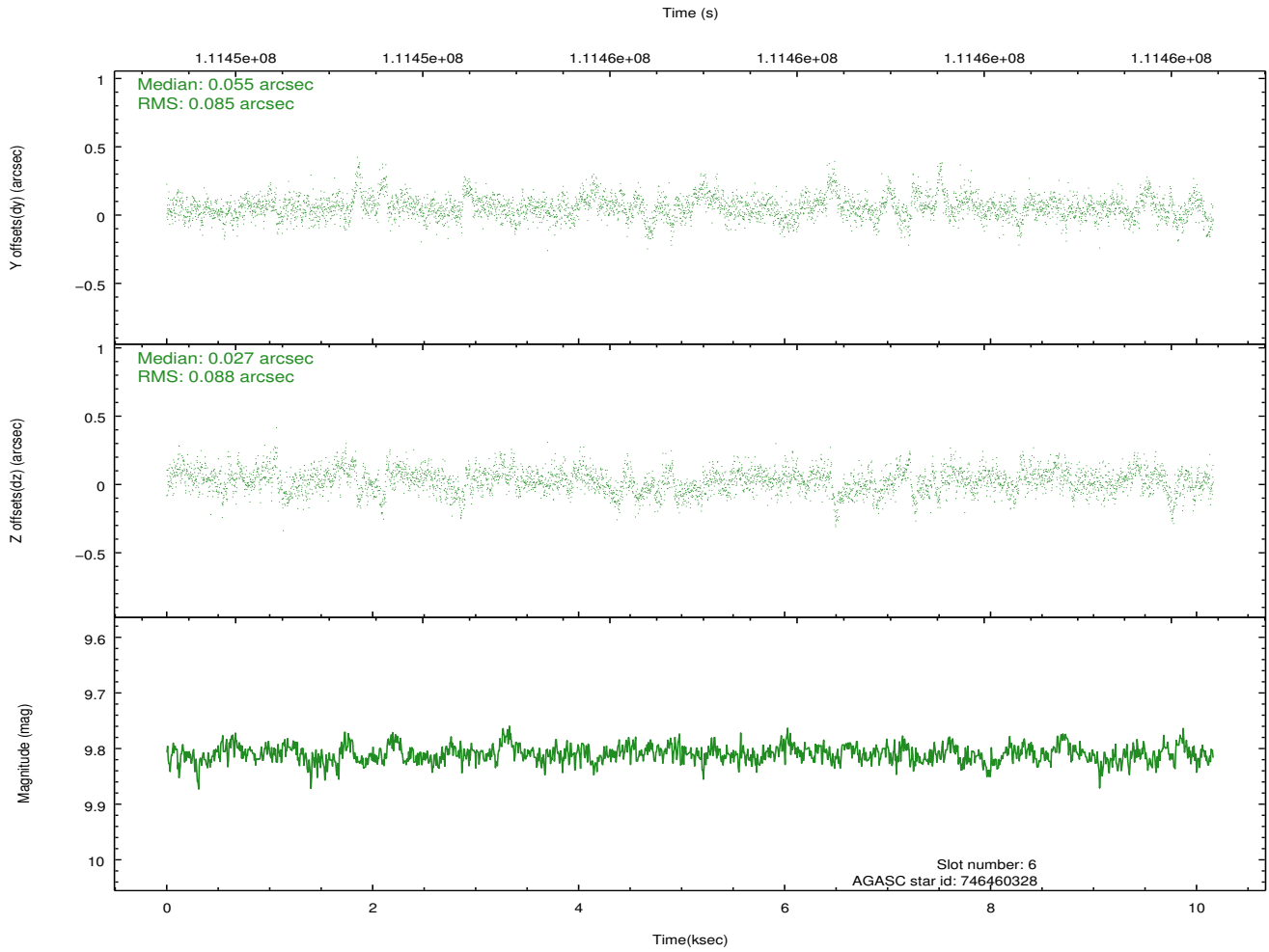
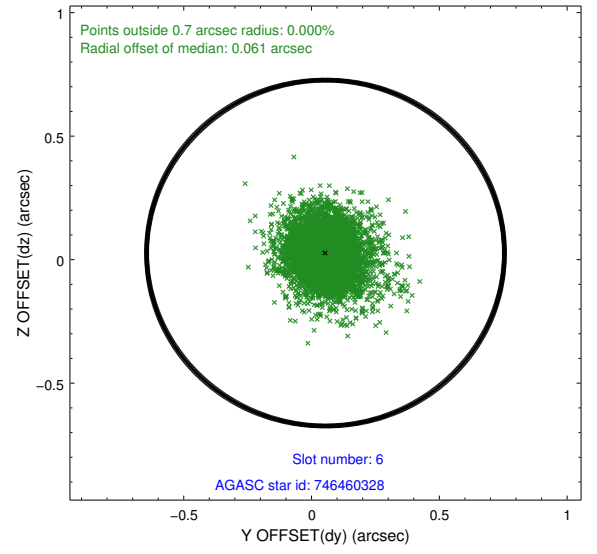
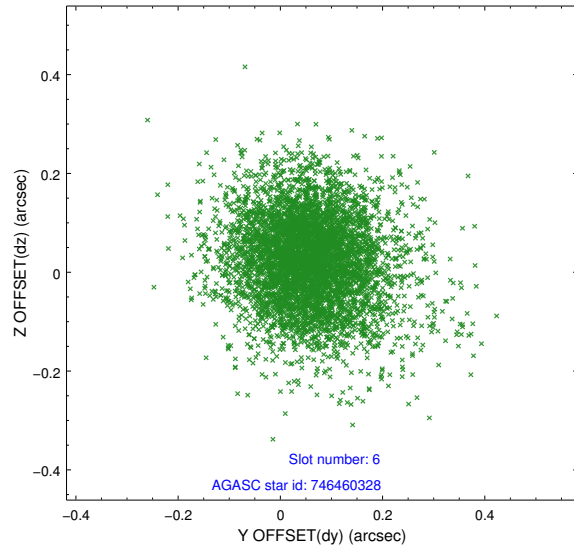
2.4.2 Slot 4



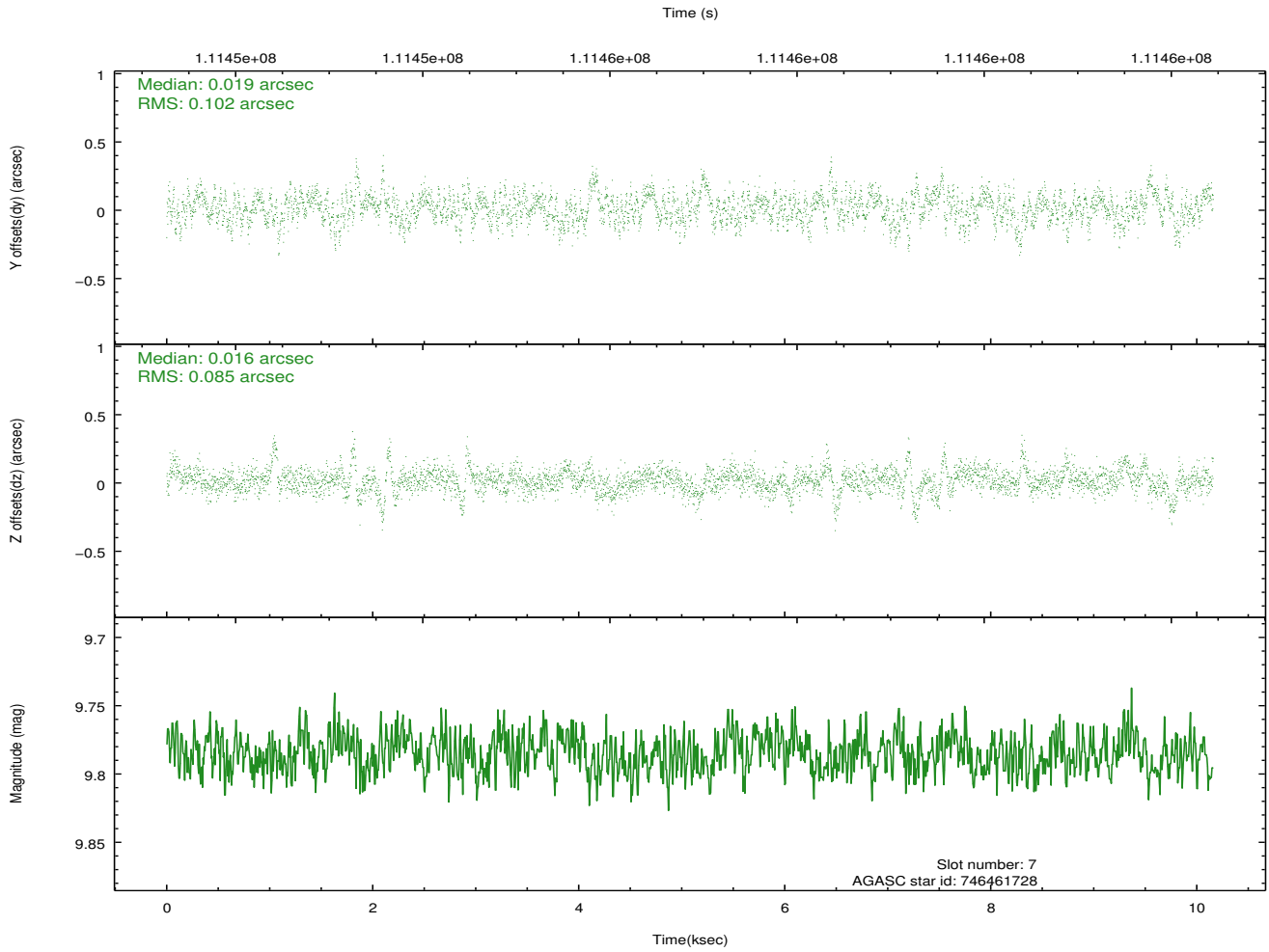
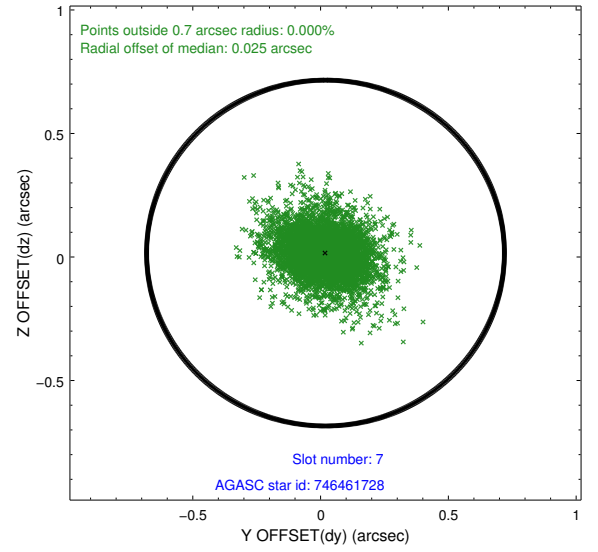
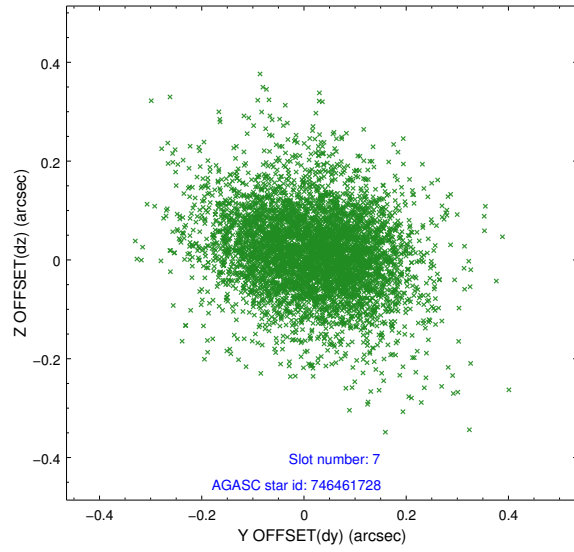
2.4.3 Slot 5



2.4.4 Slot 6

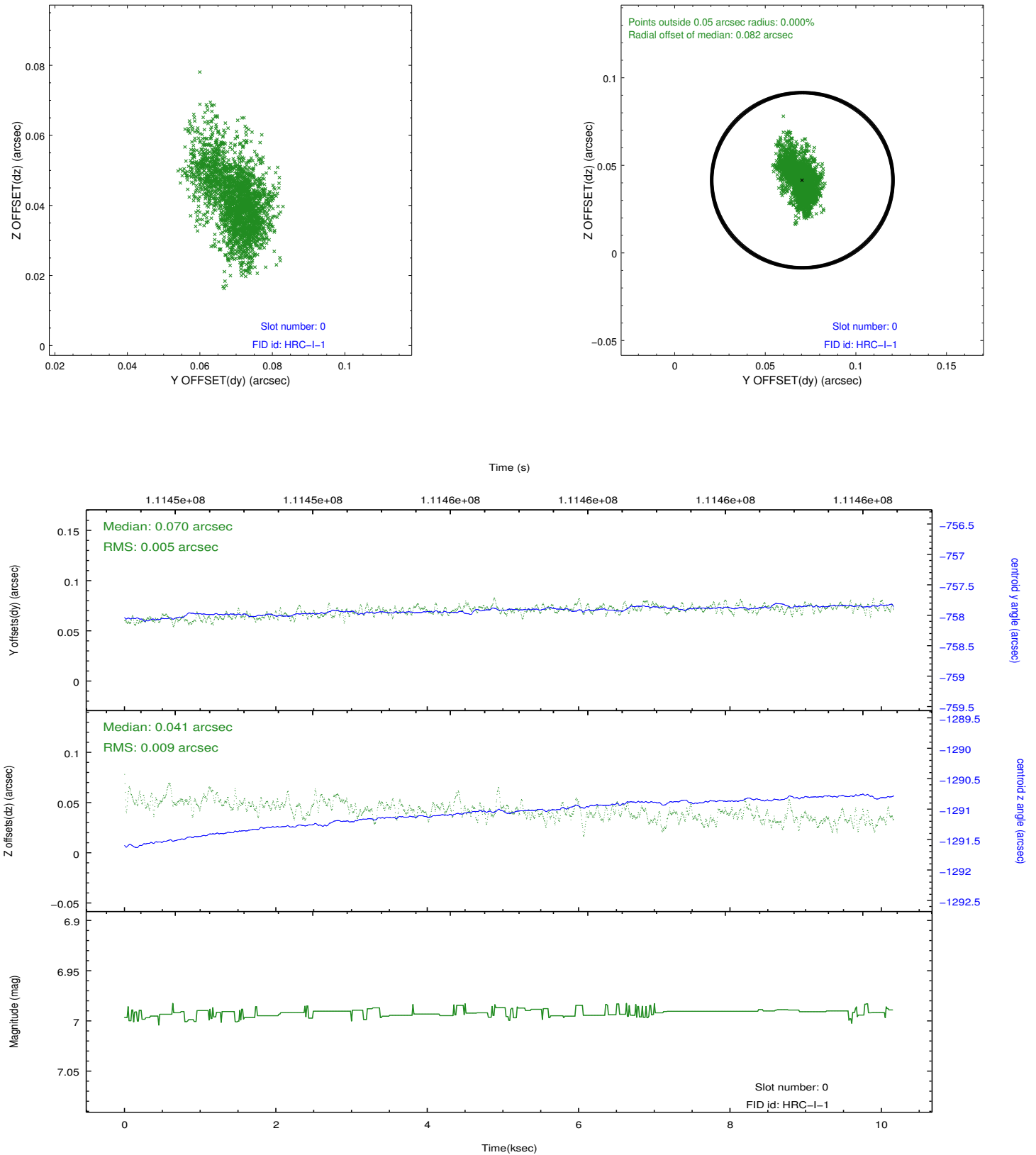


2.4.5 Slot 7

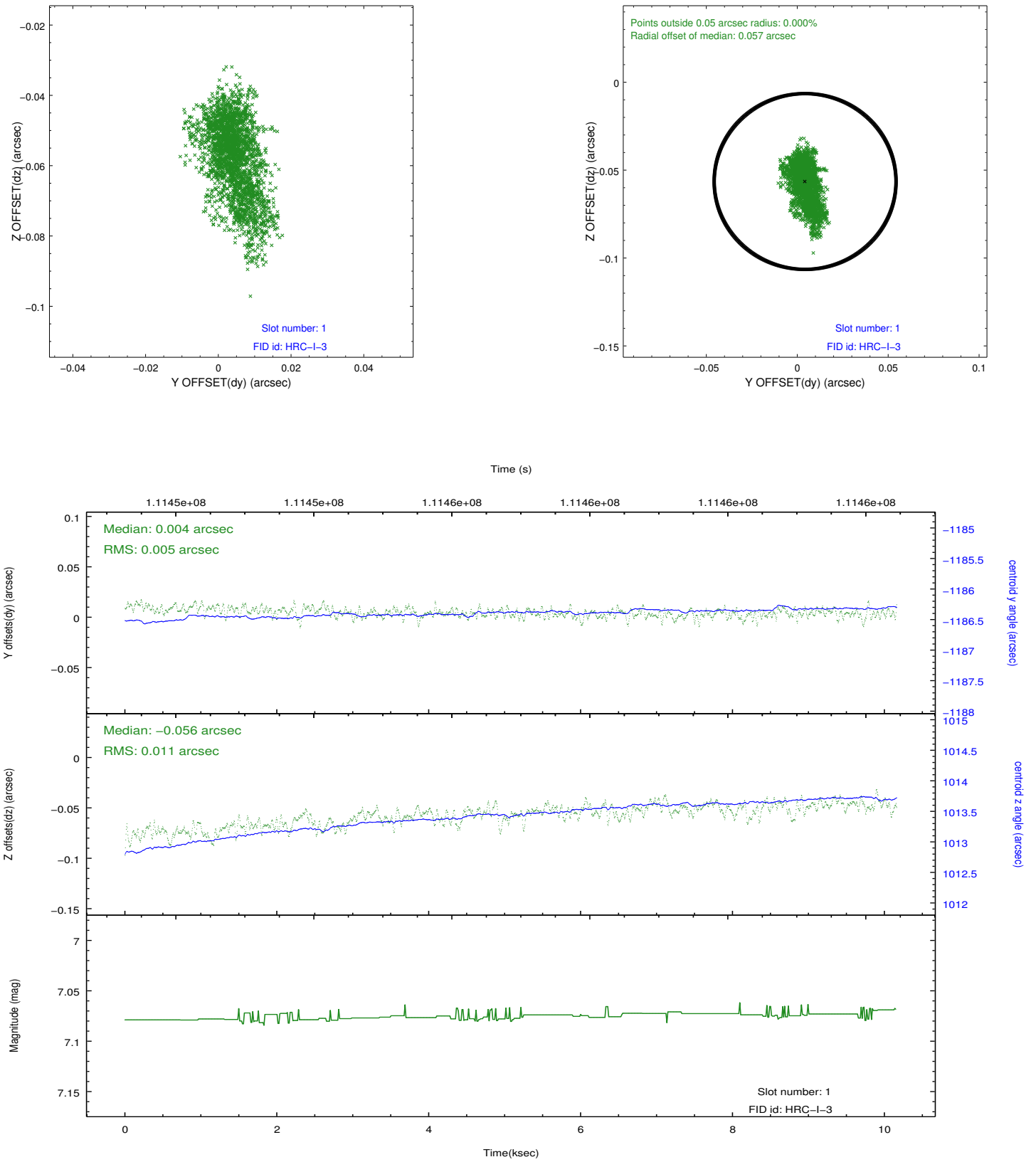


2.5 FID Slots

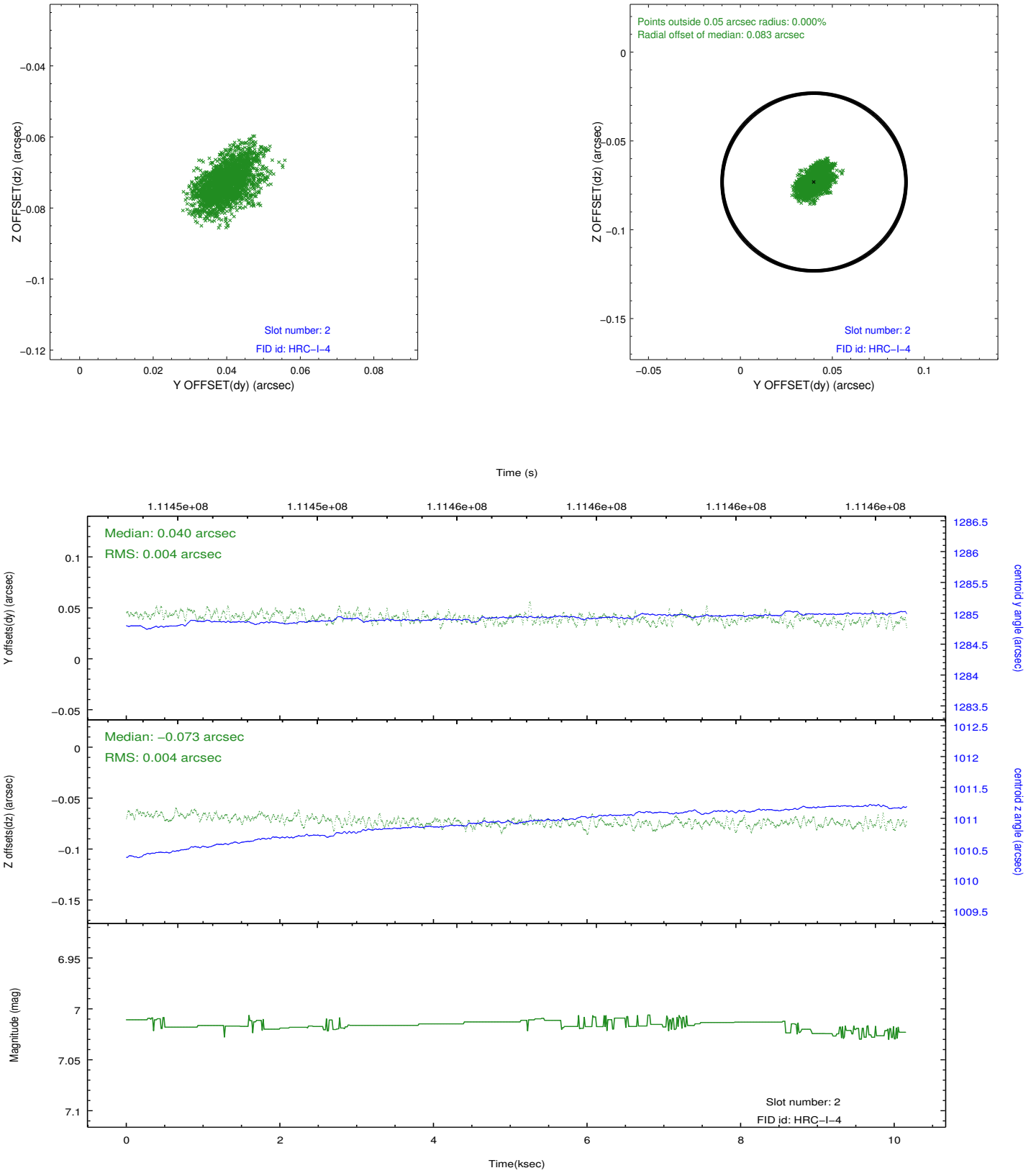
2.5.1 Slot 0



2.5.2 Slot 1



2.5.3 Slot 2



A Summary

A.1 Status

V&V Scientist	Jen Lauer
V&V Date (YYYY-MM-DD)	2012.09.21
V&V Edition	1
V&V Disposition and Status	OK
V&V Charge Time	10.152

A.2 Comments

Window constraint met.