

V&V Reference Report

L2 ASCDS Version : 8.4.5

Observation 1553 - L2 Version 3
Chandra X-Ray Center

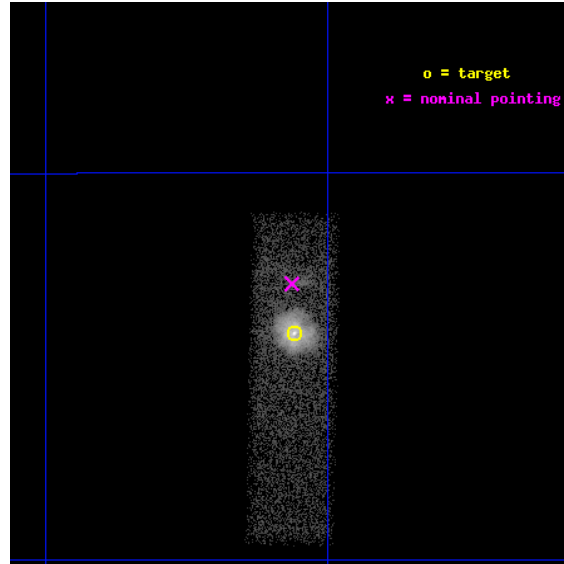
L2 Processing Date : Sep 14 2012

Contents

1	Front	2
2	OBI	3
2.1	OBI	3
2.1.1	Images	3
2.1.2	Bias	3
2.1.3	Parameters	4
2.1.4	Events	4
2.2	Compared Parameters	5
2.3	Aspect	6
2.4	Star Slots	9
2.4.1	Slot 3	9
2.4.2	Slot 4	10
2.4.3	Slot 5	11
2.4.4	Slot 6	12
2.4.5	Slot 7	13
2.5	FID Slots	14
2.5.1	Slot 0	14
2.5.2	Slot 1	15
2.5.3	Slot 2	16
A	Summary	17
A.1	Status	17
A.2	Comments	17

1 Front

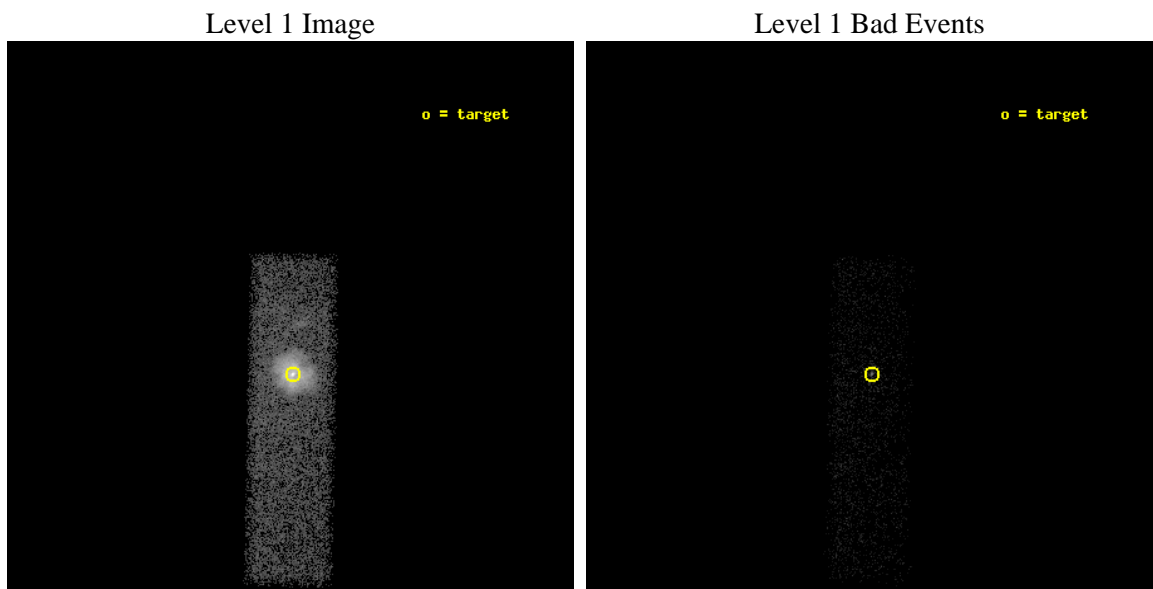
seq_num	590162	Sequence number
obs_id	1553	Observation id
title	CALIBRATION OBSERVATIONS OF THE STANDARD CANDLE G21.5-09	Proposal
observer	Dr. CXC Calibration	Principal investigator
object	G21.5-0.9 [Chip S3, T=120, Offsets=-1,0,0]	Source name
dtcycle	0	
cycle	P	events from which exps? Prim/Second/Both
ra_targ	278.389583	Observer's specified target RA [deg]
dec_targ	-10.568528	Observer's specified target Dec [deg]
ra_nom	278.39100907741	Nominal RA [deg]
dec_nom	-10.547645787351	Nominal Dec [deg]
roll_nom	91.187547708705	Nominal Roll [deg]
revision	3	Processing version of data
ontime	10240.799961865	Sum of GTIs [s]
livetime	9741.0824330495	Livetime [s]
ontime7	10240.799961865	Sum of GTIs [s]
l2events	43502	Number of level 2 events



2 OBI

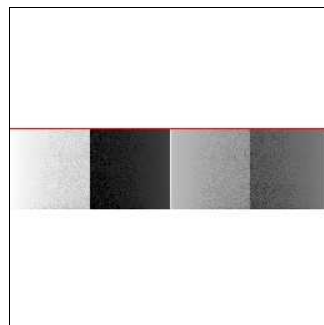
2.1 OBI

2.1.1 Images



2.1.2 Bias

Chip 7



2.1.3 Parameters

obi_num	0	Obi number	sched_exp_time	10000.000000	[s] Scheduled observation exposure time
ascdsver	8.4.5	Processing system revision	ontime	10240.799961865	Sum of GTIs [s]
caldsver	4.5.1.1	 	ontime7	10240.799961865	Sum of GTIs [s]
date	2012-09-14T04:12:22	Date and time of file creation	l1events	57845	Number of level 1 events
revision	3	Processing version of data			

2.1.4 Events

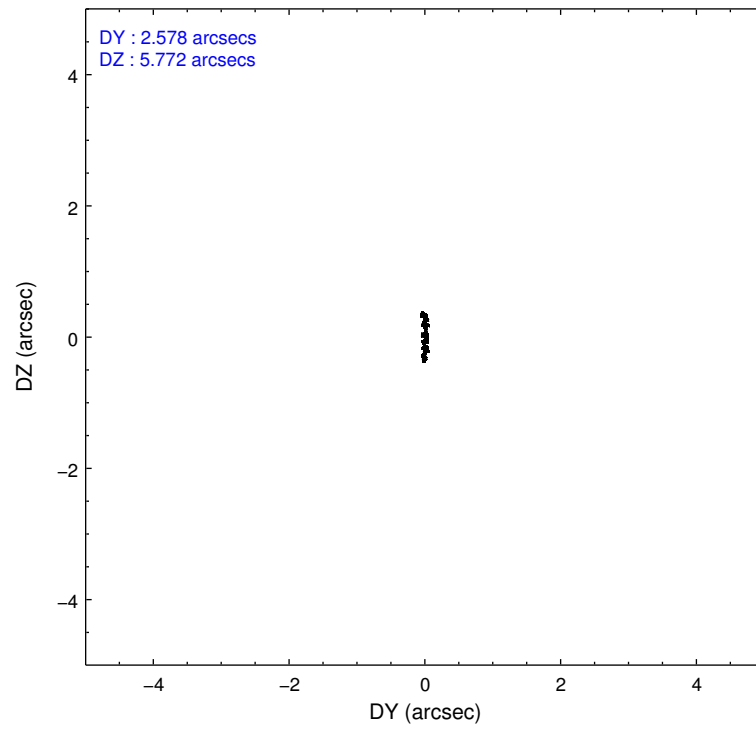
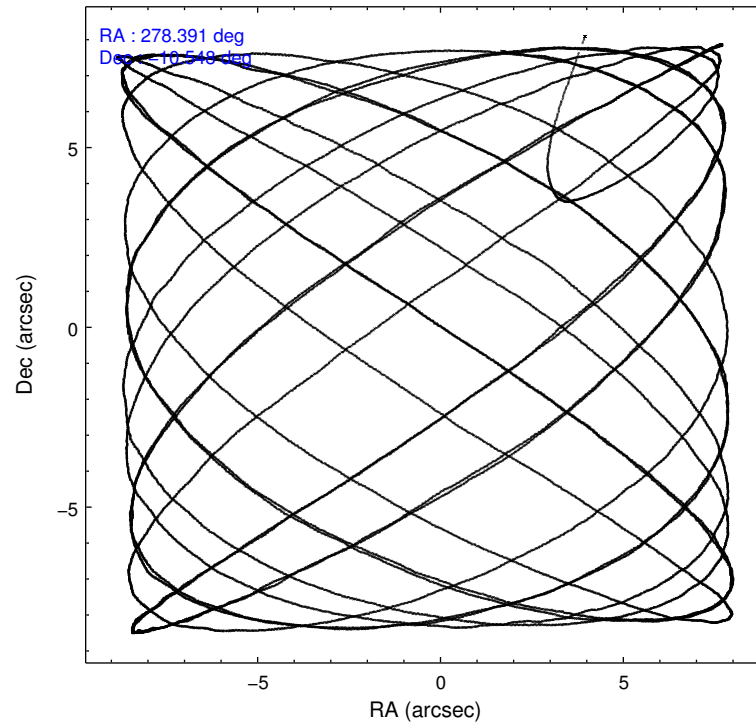
	ccd 7
level 1 events	57845
rejected events	13995
rejected %	24%

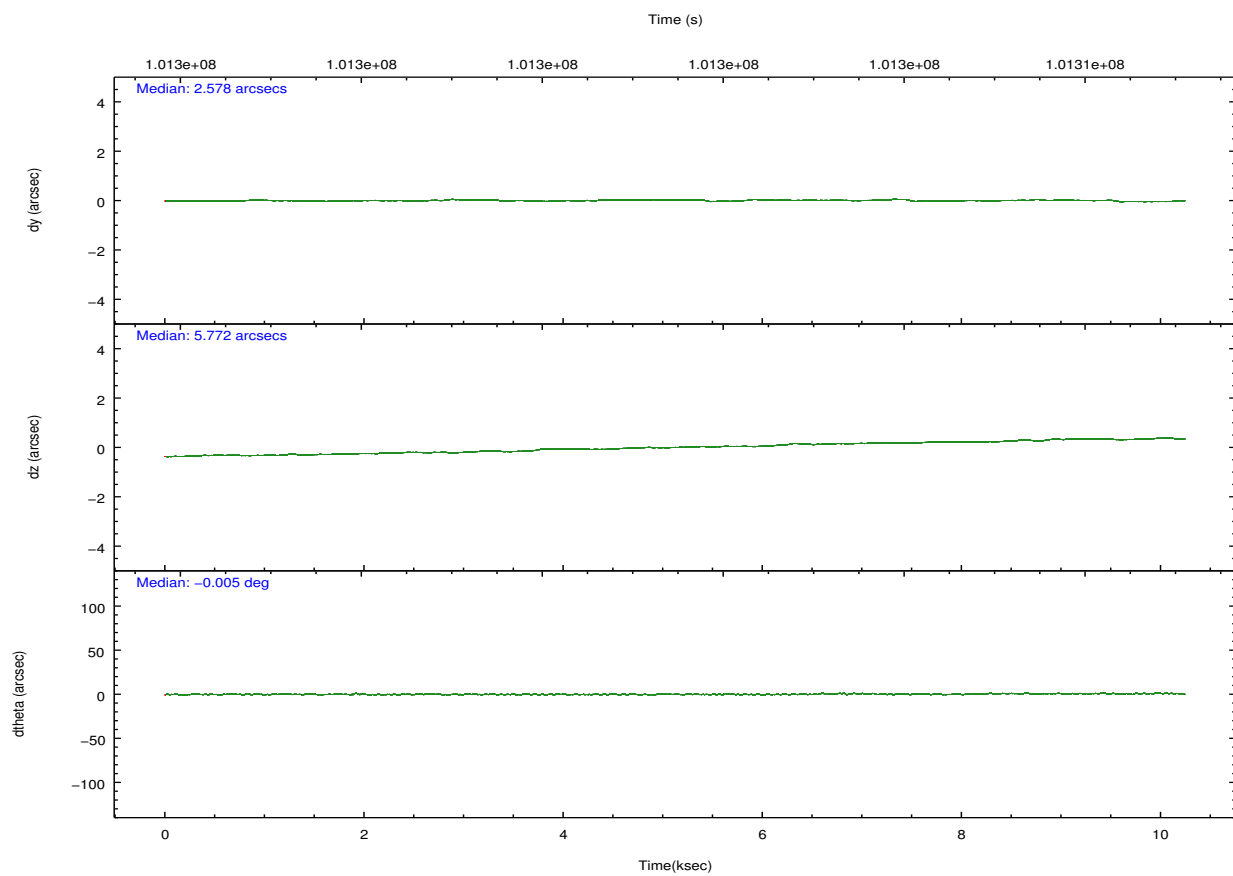
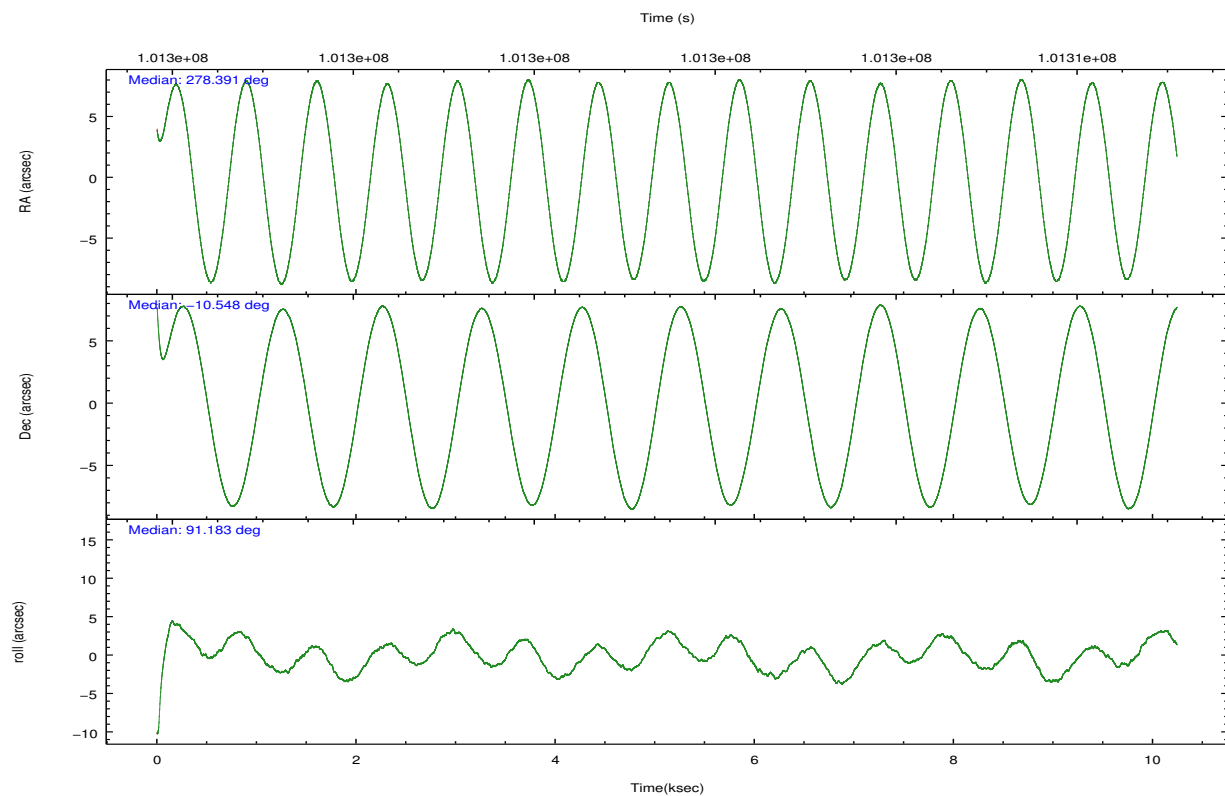
	ccd 7
grade 0 events	8897
	15%
grade 1 events	45
	0%
grade 2 events	10881
	18%
grade 3 events	5279
	9%
grade 4 events	5091
	8%
grade 5 events	2457
	4%
grade 6 events	14799
	25%
grade 7 events	10396
	17%

2.2 Compared Parameters

Parameter	Planned	Actual	Parameter	Planned	Actual
Instrument	ACIS	ACIS	Obspar format version number	7	7
Detector	ACIS-7	ACIS-7	Obspar file type	PREDICTED	ACTUAL
Grating	NONE	NONE	Obspar update status	NONE	UPDATED
Data mode	VFAINT	VFAINT	Number of optional ACIS chips dropped	0	0
Observation mode	POINTING	POINTING	On-chip summing requested	N	N
[deg] Pointing RA	278.405564	278.3910090774093	Subarray requested	CUSTOM	1/4
[deg] Pointing Dec	-10.570912	-10.54764578735084	Subarray start row	384	384
[deg] Pointing Roll	91.033611	91.18754770870535	Subarray row count	256	256
[s] Window start time (MET)	98582464.184000	98582464.184000	Alternating exposures requested	N	N
[s] Window stop time (MET)	102297664.184000	102297664.184000	[s] Primary exposure time	0.000000	0.8
[mm] SIM focus pos	-0.684267	-0.6828225247311905			
[mm] SIM defocus	0	0.001444936568705701			
[mm] SIM translation stage pos	-190.132523	-190.1425803651734			
[mm] SIM translation stage offset	0	0.01005778216563158			
[s] Observation start time (MET)	101296590.184000	101295581.38051			
Observation start date	2001-03-18T09:55:26	2001-03-18T09:39:41			
[s] Observation end time (MET)	101306590.184000	101307433.45597			
Observation end date	2001-03-18T12:42:06	2001-03-18T12:57:13			
Read mode	TIMED	TIMED			

2.3 Aspect



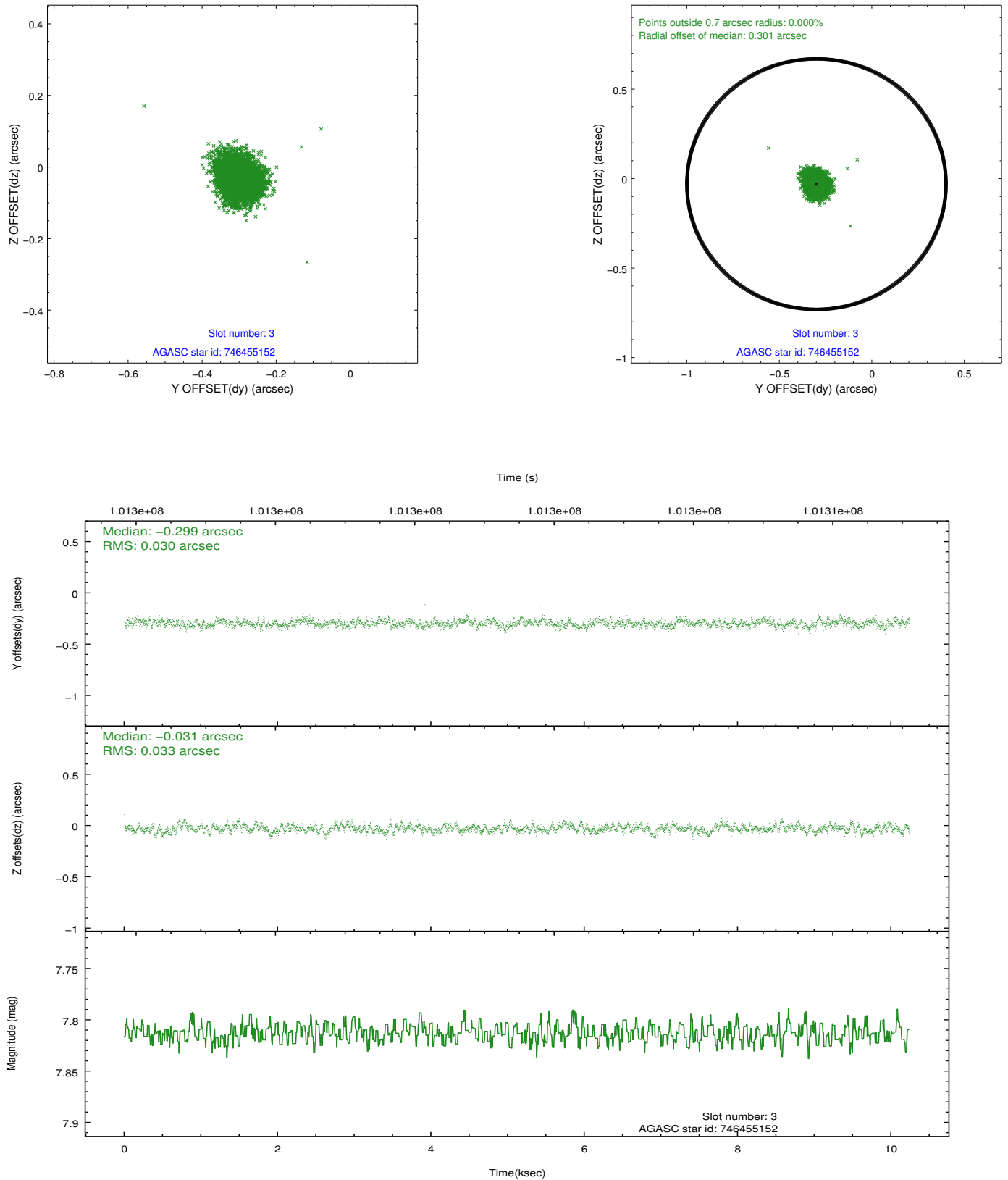


Slot Statistics

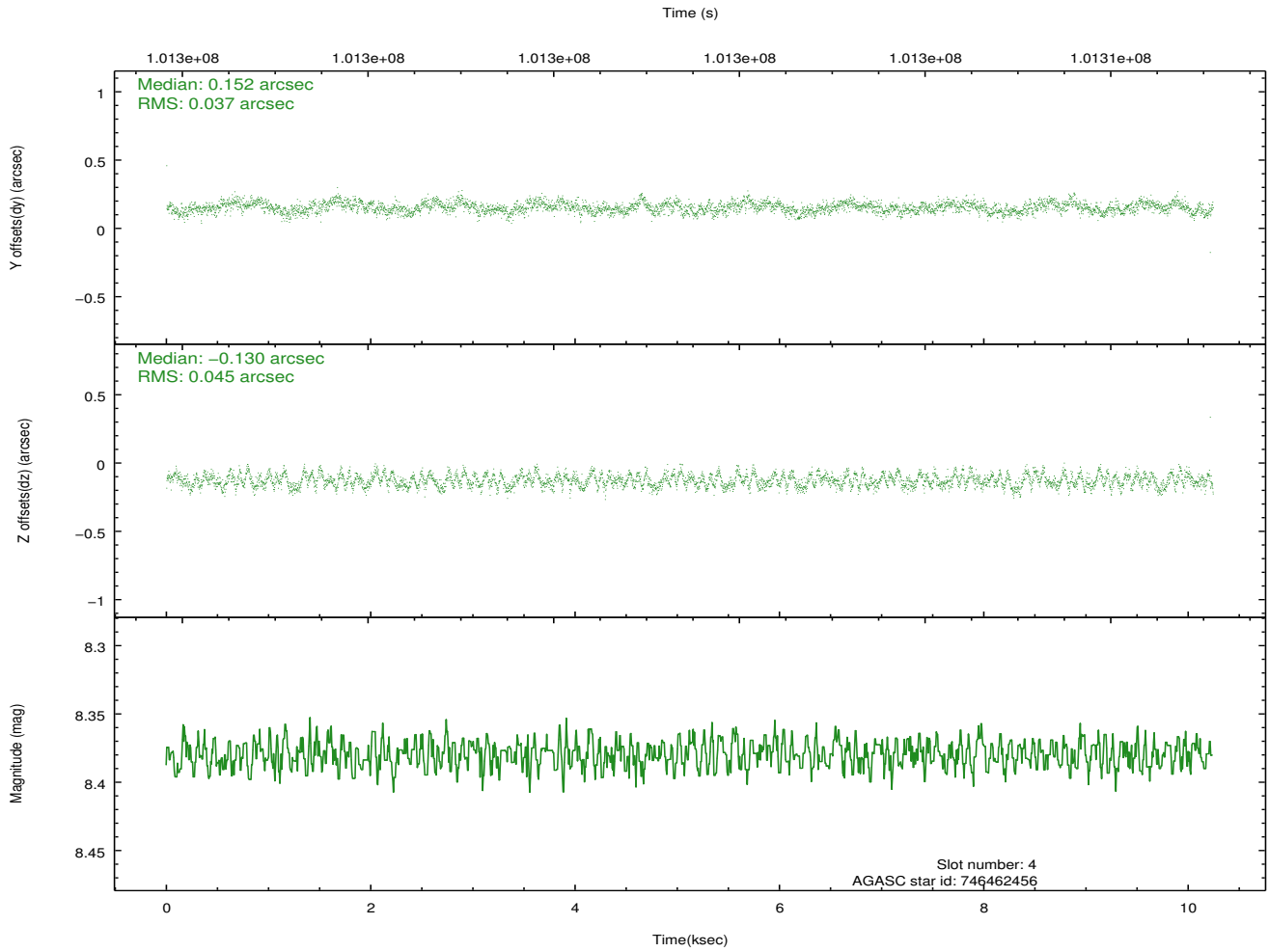
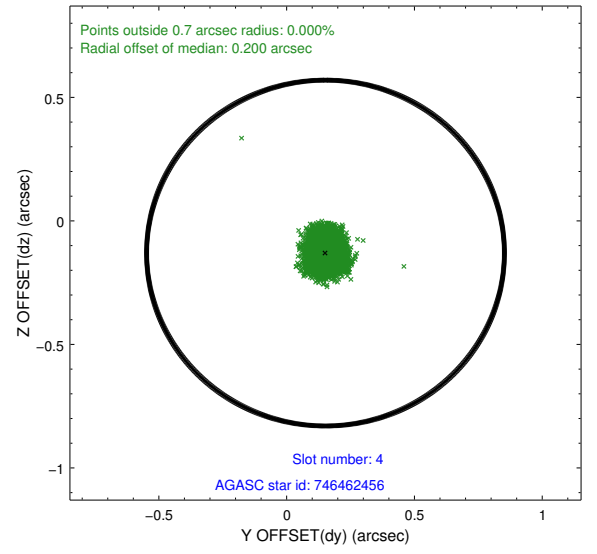
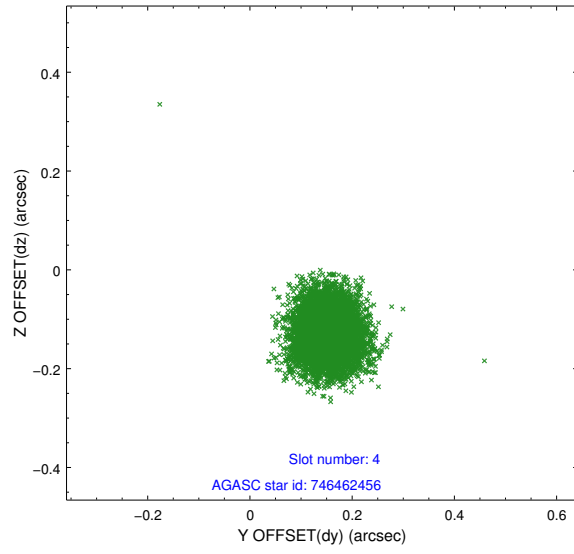
slot	status	id	mag	n_pts	med_dy	med_dz	dr1	dr2	ra	dec	mean_y	mean_z
0	FID	ACIS-S-2	7.11	2499	-0.035	-0.003	0.007	0.012	0.000000	0.000000	-755.20	-1726.87
1	FID	ACIS-S-4	7.20	2499	-0.020	0.018	0.006	0.011	0.000000	0.000000	2157.81	181.17
2	FID	ACIS-S-5	7.24	2498	0.025	-0.006	0.007	0.011	0.000000	0.000000	-1807.37	175.31
3	GUIDE	746455152	7.81	4996	-0.299	-0.031	0.047	0.076	278.447893	-9.976732	2136.25	-188.70
4	GUIDE	746462456	8.38	4993	0.152	-0.130	0.062	0.097	278.652171	-10.530173	131.58	-875.71
5	GUIDE	746462392	8.54	4995	0.157	0.129	0.080	0.126	279.038421	-10.890715	-1193.13	-2216.59
6	GUIDE	746455112	8.93	4996	0.116	-0.007	0.070	0.113	278.266531	-10.703234	-467.10	499.58
7	GUIDE	746460272	8.92	4995	-0.127	0.043	0.073	0.123	278.847488	-10.152127	1478.52	-1592.91

2.4 Star Slots

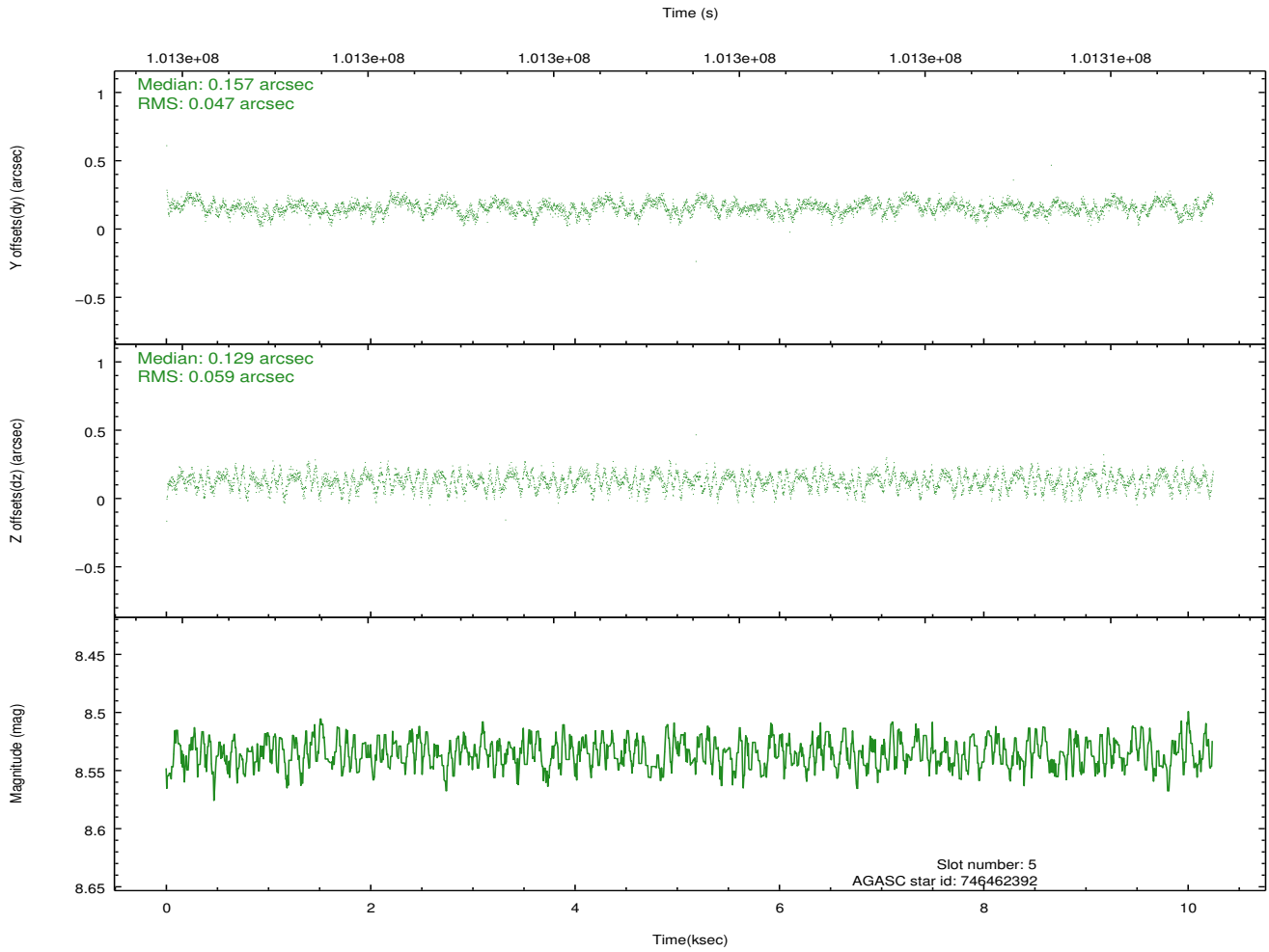
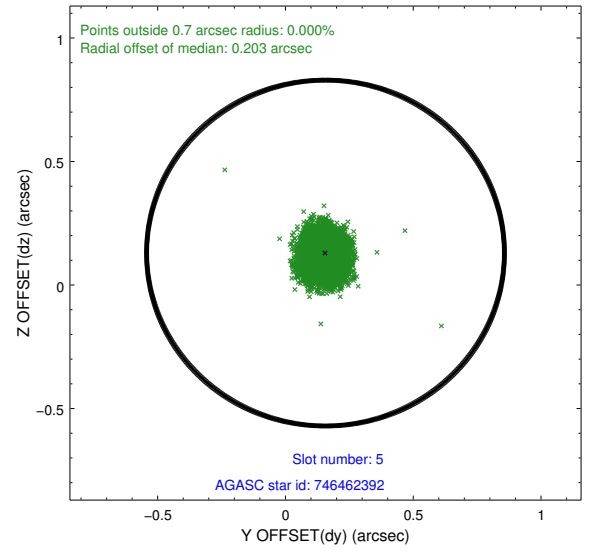
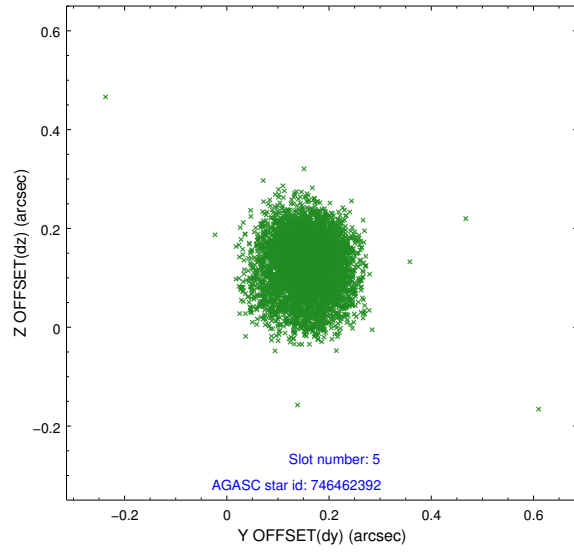
2.4.1 Slot 3



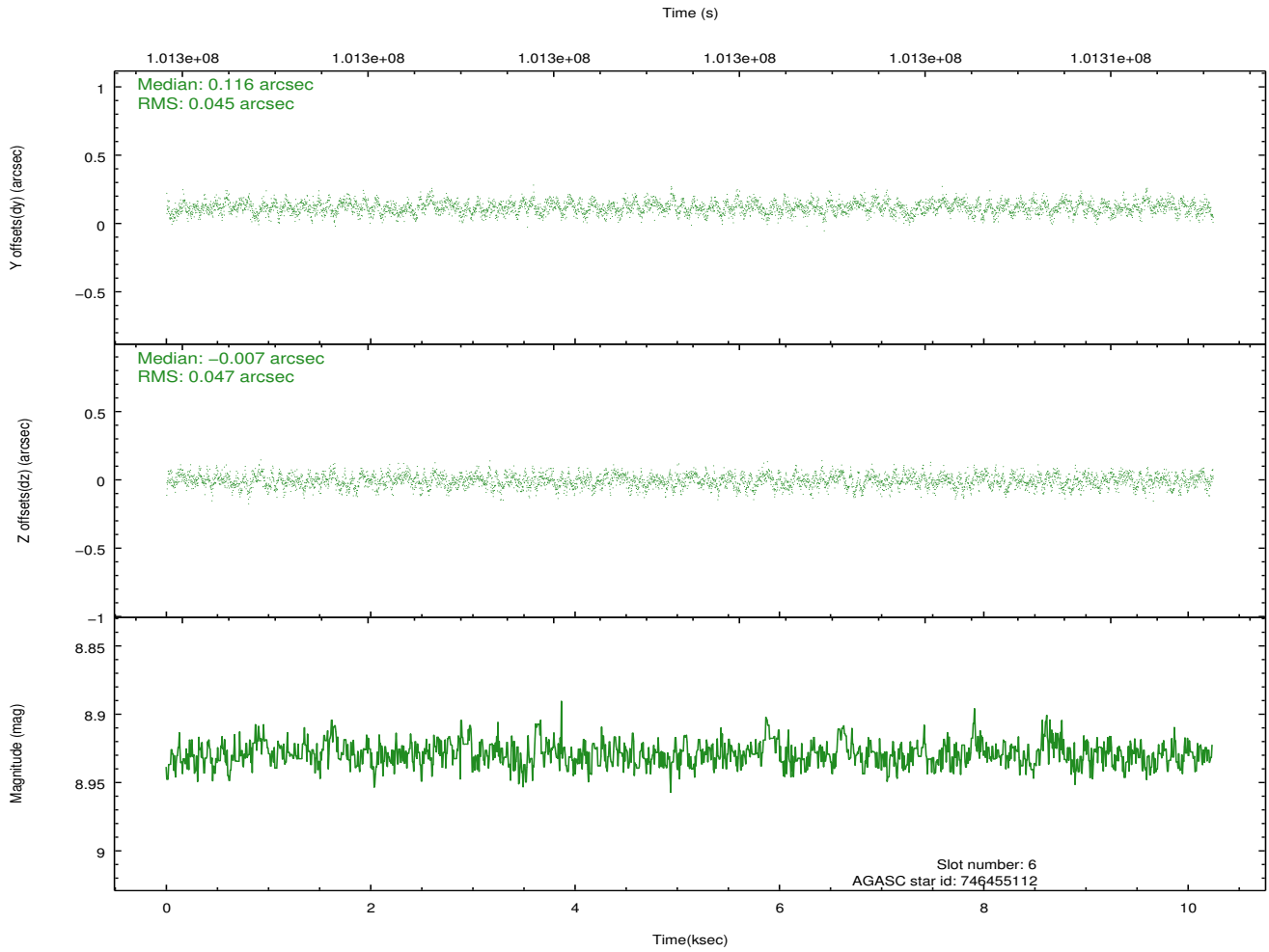
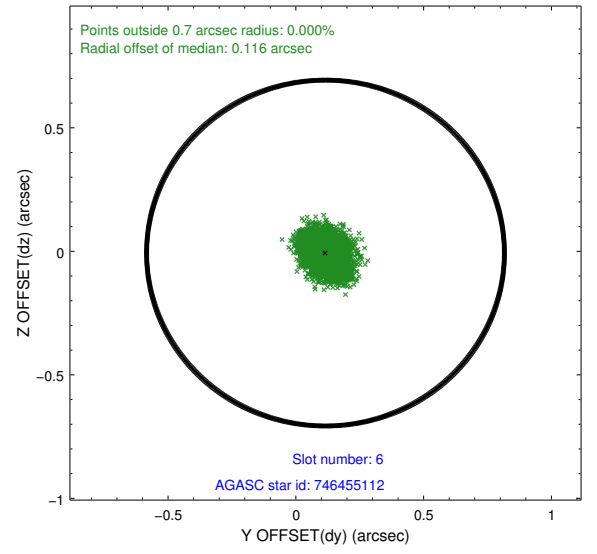
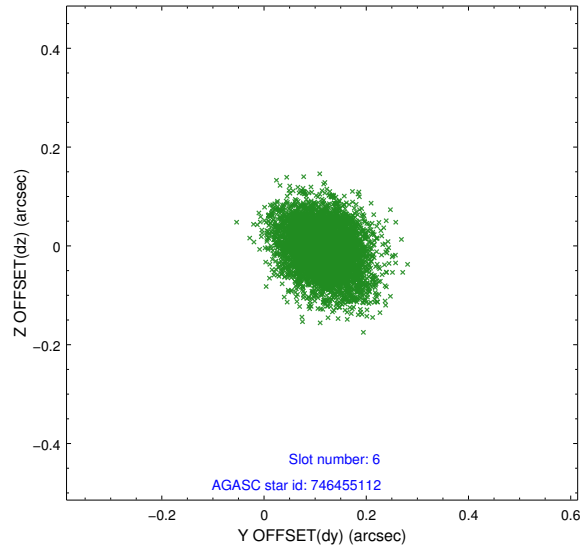
2.4.2 Slot 4



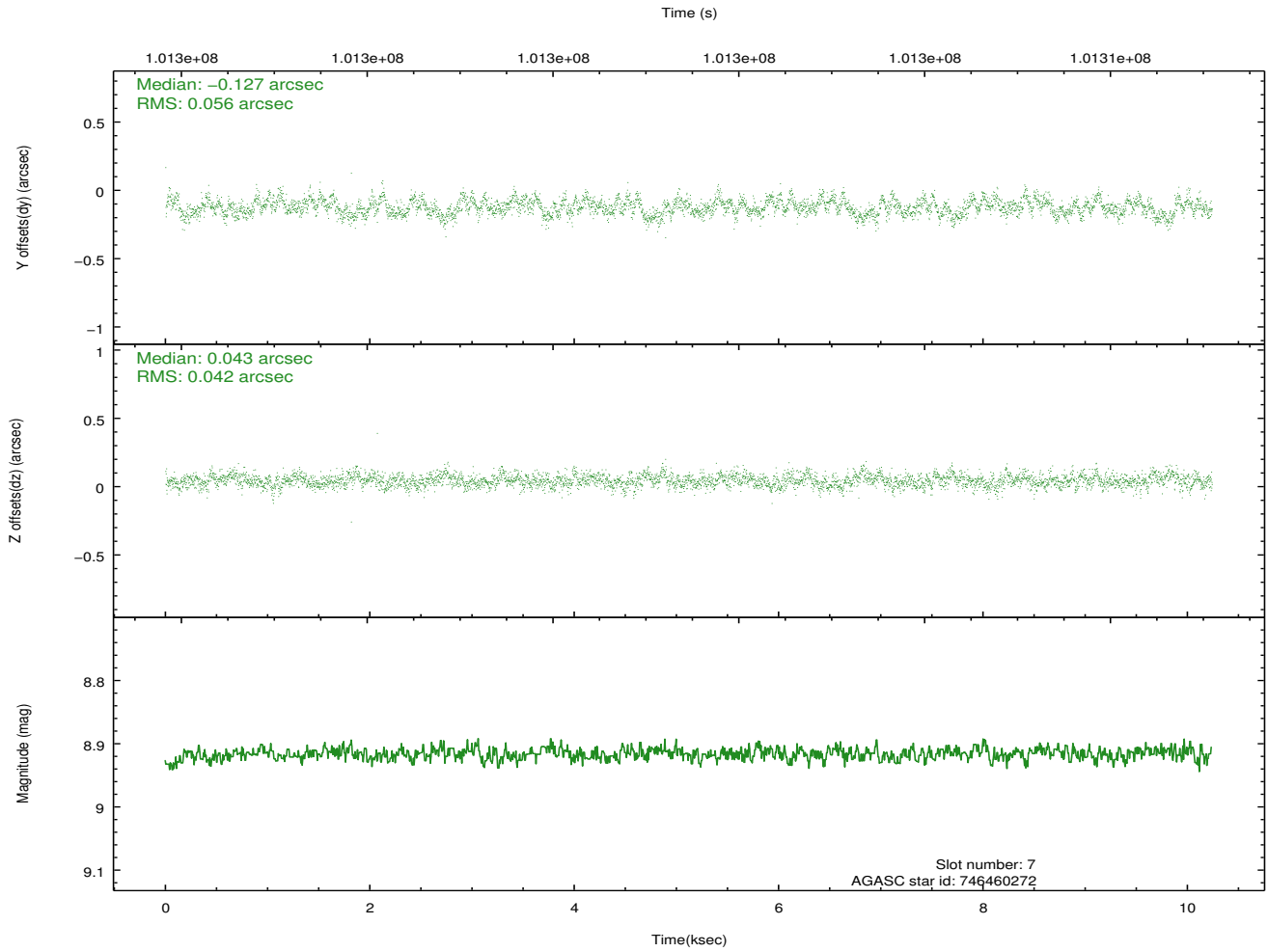
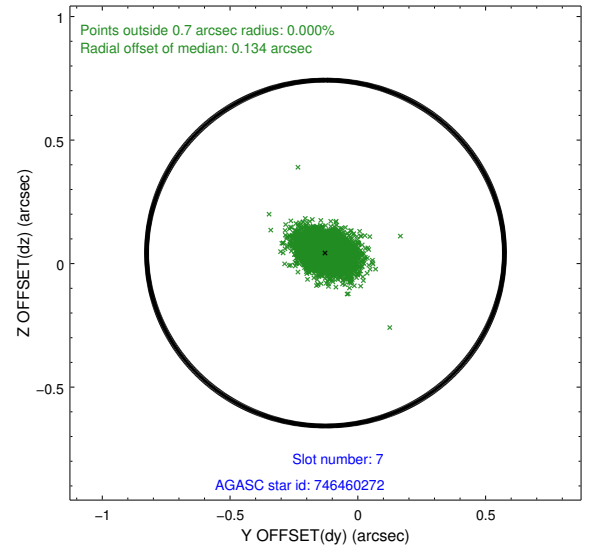
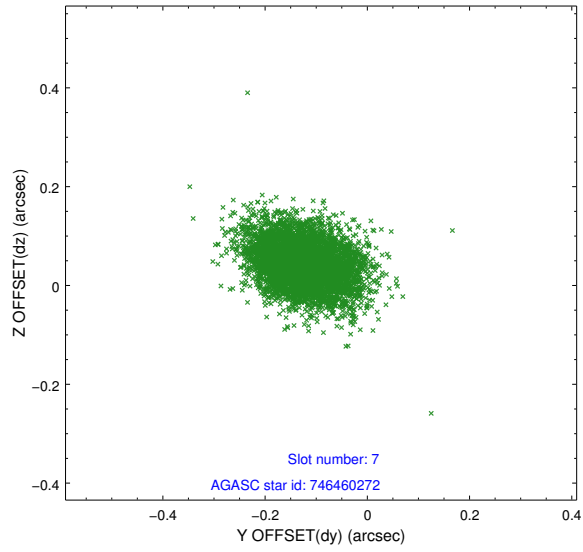
2.4.3 Slot 5



2.4.4 Slot 6

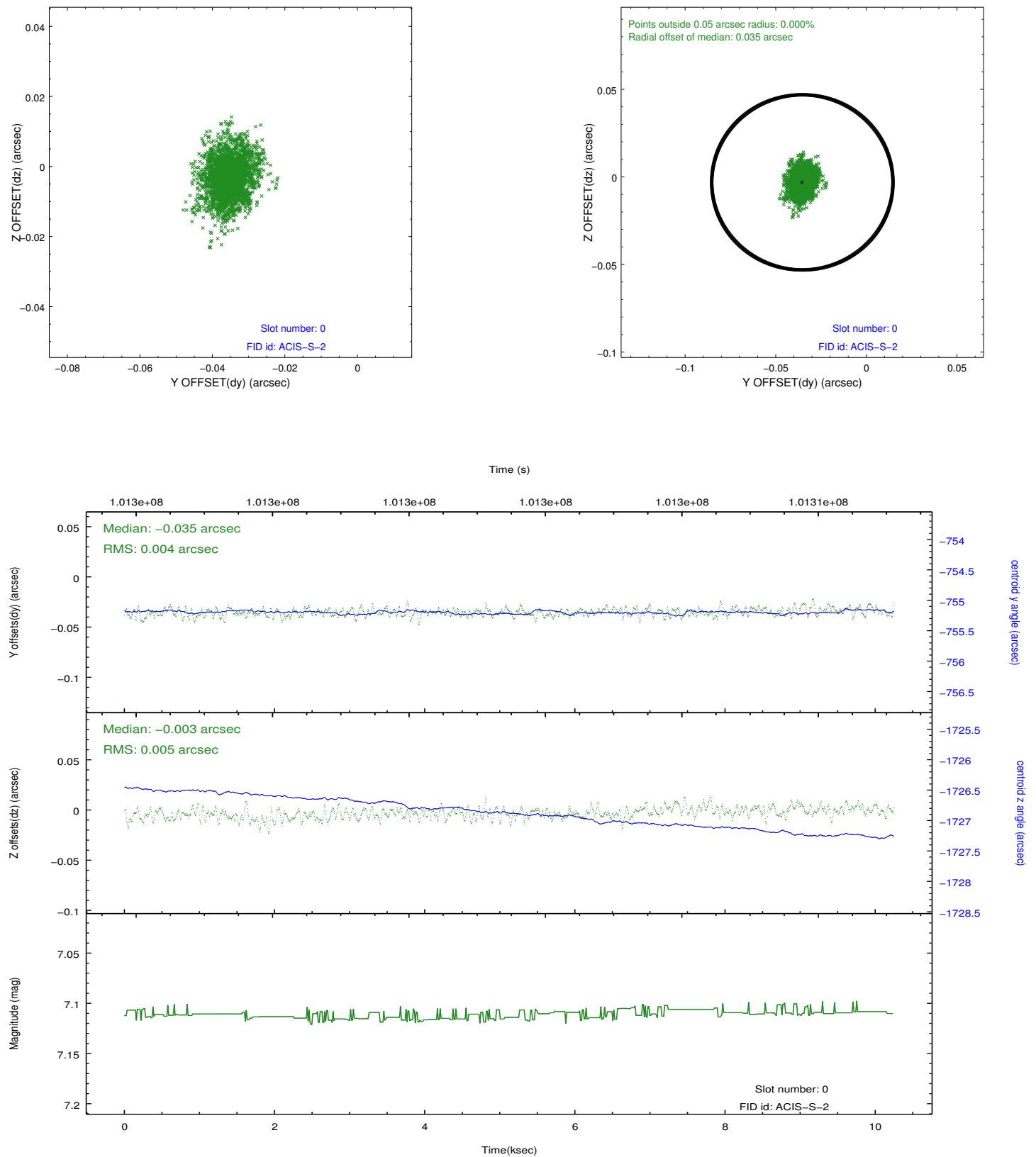


2.4.5 Slot 7

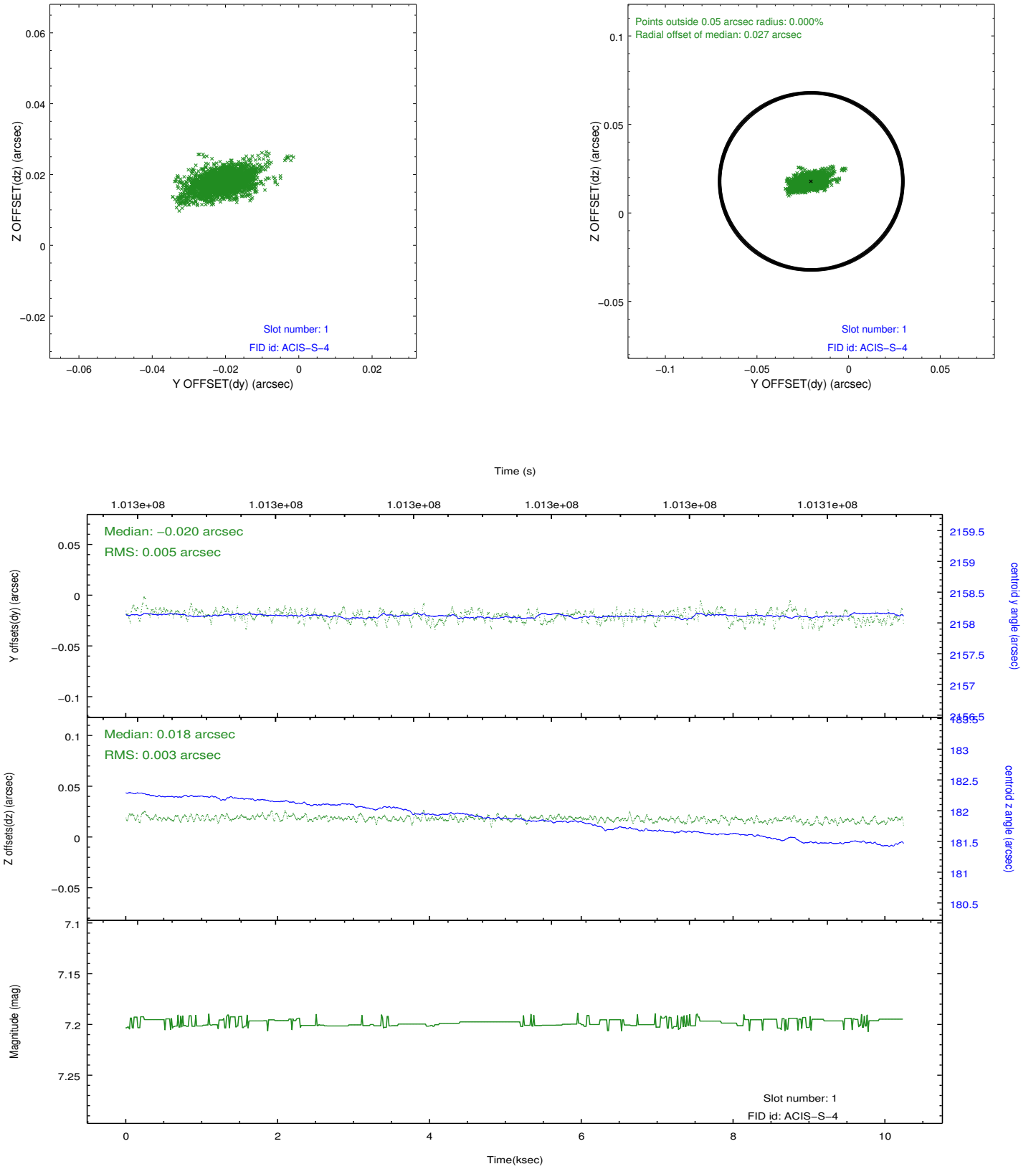


2.5 FID Slots

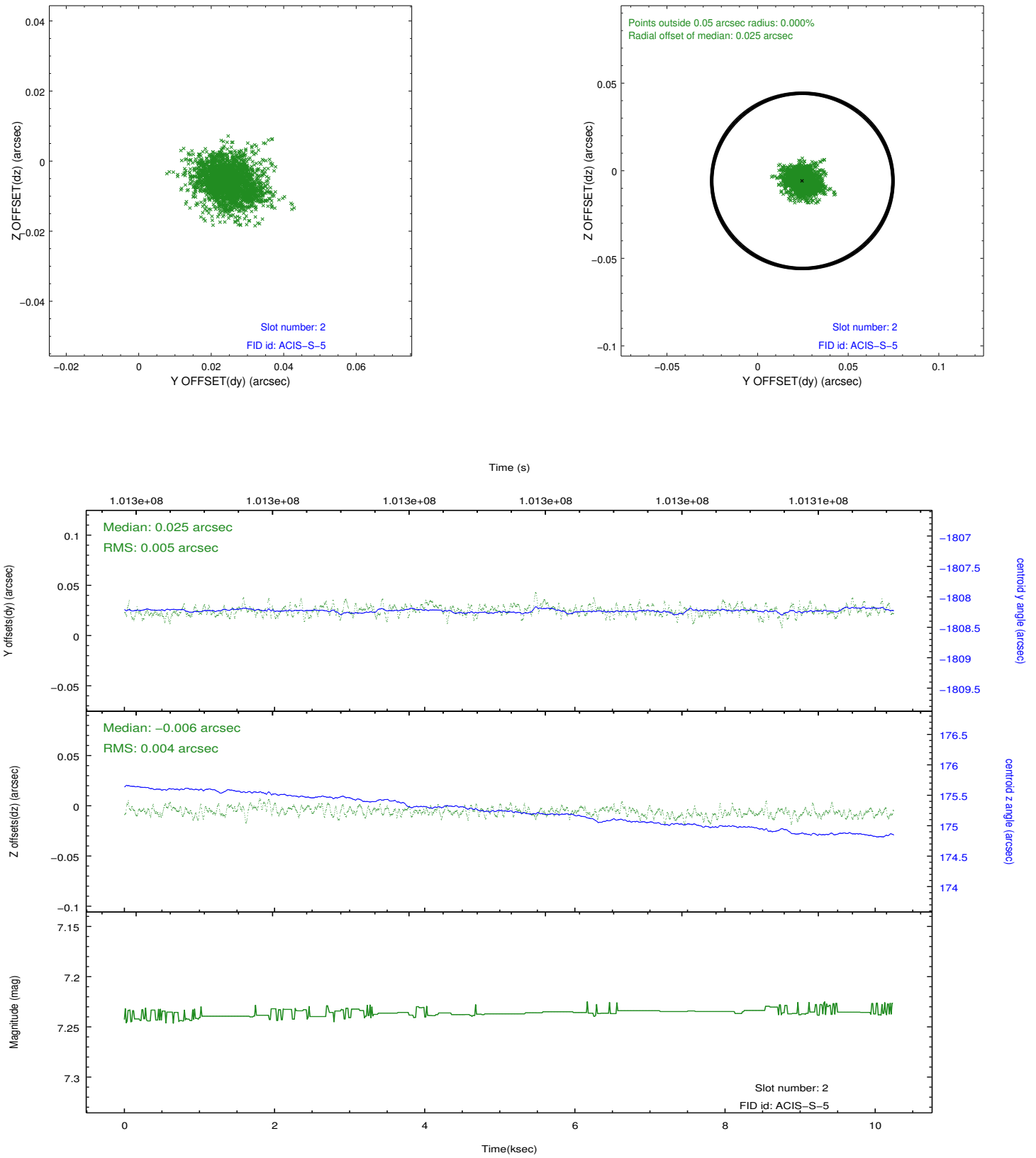
2.5.1 Slot 0



2.5.2 Slot 1



2.5.3 Slot 2



A Summary

A.1 Status

V&V Scientist	Jen Lauer
V&V Date (YYYY-MM-DD)	2012.09.18
V&V Edition	1
V&V Disposition and Status	OK
V&V Charge Time	10.24

A.2 Comments

Window constraint met.