

V&V Reference Report

L2 ASCDS Version : 7.6.9

Observation 1548 - L2 Version 001
Chandra X-Ray Center

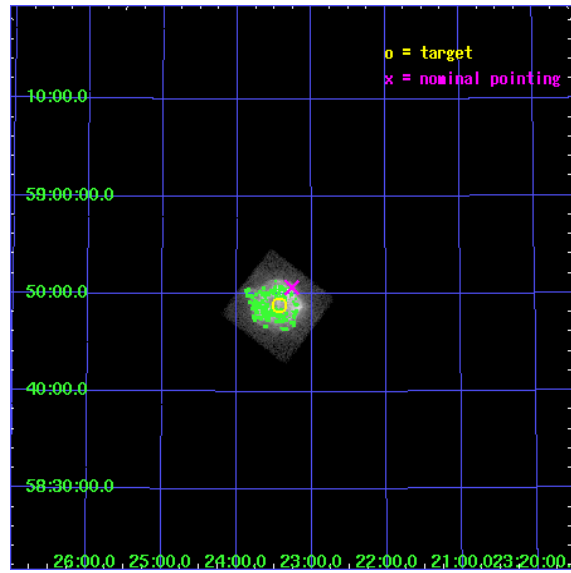
L2 Processing Date : Dec 14 2006

Contents

1	Front	2
2	OBI	3
2.1	OBI	3
2.1.1	Images	3
2.1.2	Bias	3
2.1.3	Parameters	4
2.1.4	Events	4
2.2	Compared Parameters	5
2.3	Aspect	6
2.4	Star Slots	9
2.4.1	Slot 3	9
2.4.2	Slot 4	10
2.4.3	Slot 5	11
2.4.4	Slot 6	12
2.4.5	Slot 7	13
2.5	FID Slots	14
2.5.1	Slot 0	14
2.5.2	Slot 1	15
2.5.3	Slot 2	16
3	Point Sources	17
A	Summary	18
A.1	Status	18
A.2	Comments	18

1 Front

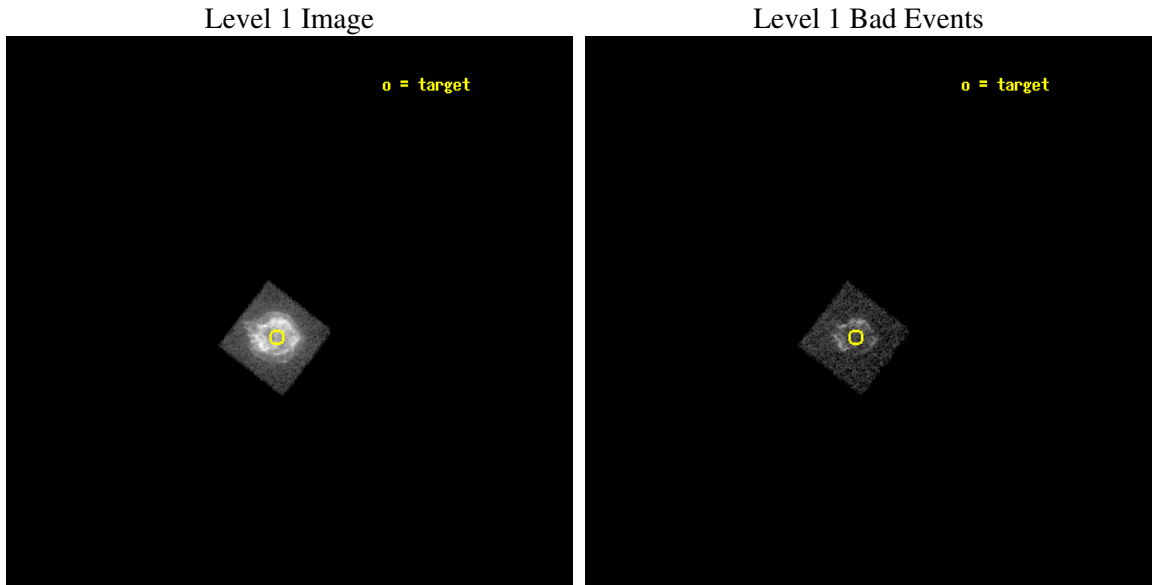
seq_num	590157
obs_id	1548
title	CALIBRATION OBSERVATIONS OF THE STANDARD CANDLE CAS A
observer	Dr. CXC Calibration
object	CAS A [Chip S3, T=120, Offsets=-2,0,0]
dtcycle	0
cycle	P
ra_targ	350.8575
dec_targ	58.814833
ra_nom	350.81586911412
dec_nom	58.845261688671
roll_nom	127.80872388198
revision	2
ontime	1077.2270762622
livetime	1063.5865783943
ontime4	1770.7929994017
ontime5	1929.6000017971
ontime6	1929.6000017971
ontime7	1077.2270762622
ontime8	1929.6000017971
ontime9	1929.6000017971
l2events	328396



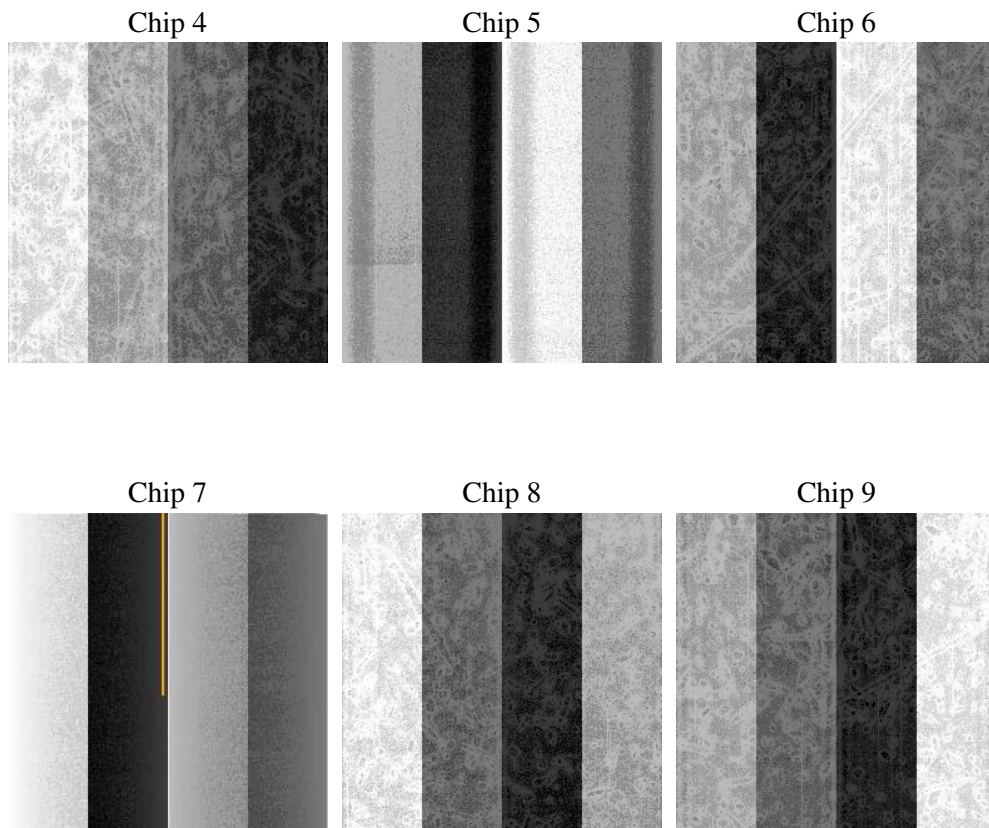
2 OBI

2.1 OBI

2.1.1 Images



2.1.2 Bias



2.1.3 Parameters

obi_num	0
ascdsver	7.6.9
caldsver	3.2.4
date	2006-12-14T07:49:07
revision	2

sched_exp_time	2000.000000
ontime	1082.5034300834
ontime4	1782.5513534546
ontime5	1941.35835585
ontime6	1944.5993759334
ontime7	1082.5034300834
ontime8	1941.35835585
ontime9	1941.35835585
l1events	373523

2.1.4 Events

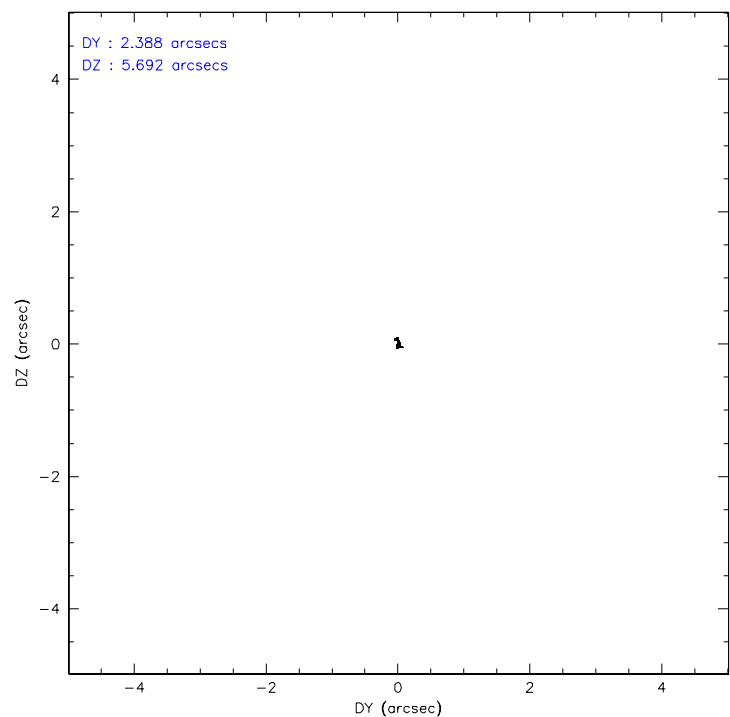
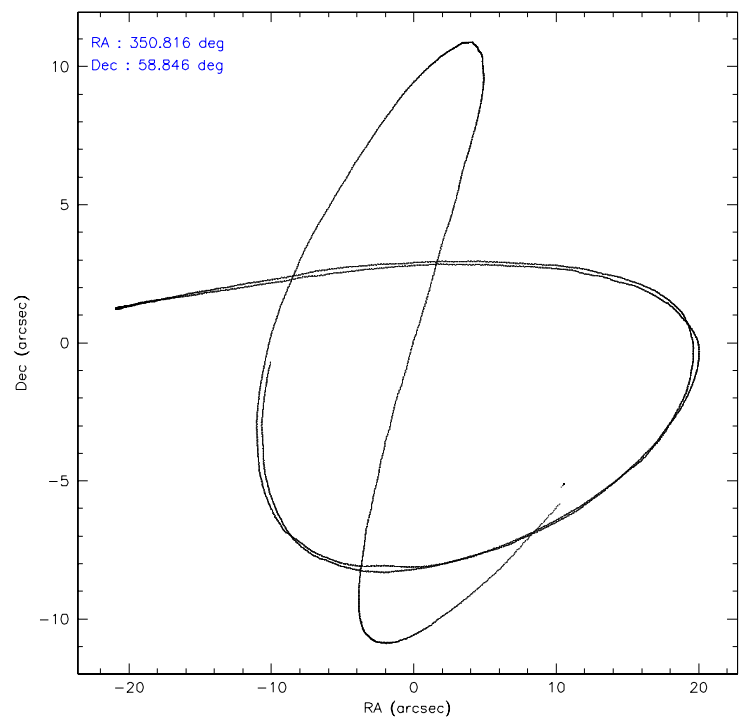
	ccd 4	ccd 5	ccd 6	ccd 7	ccd 8	ccd 9
level 1 events	0	0	0	373523	0	0
rejected events	0	0	0	42380	0	0
rejected %	0%	0%	0%	11%	0%	0%

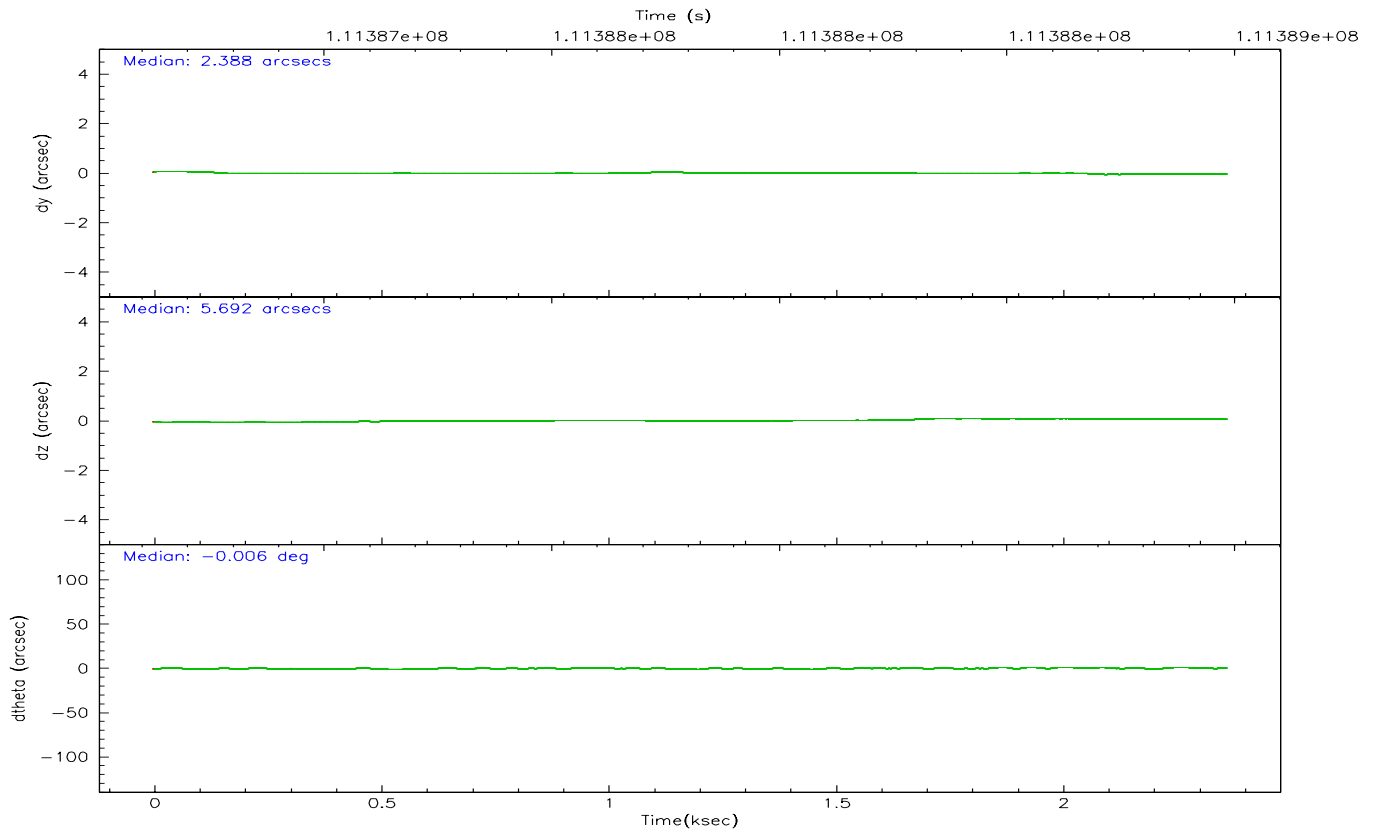
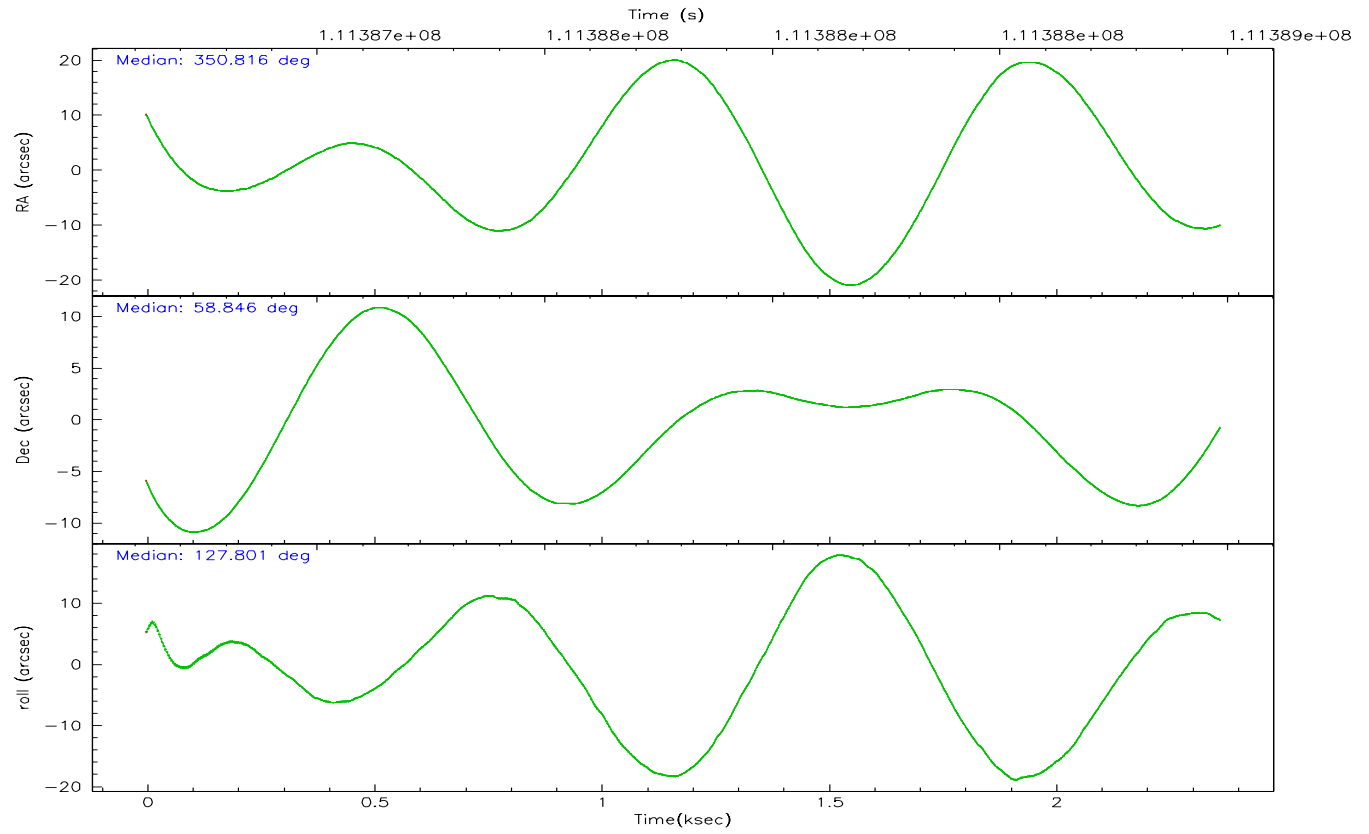
	ccd 4	ccd 5	ccd 6	ccd 7	ccd 8	ccd 9
grade 0 events	0	0	0	76281	0	0
	0%	0%	0%	20%	0%	0%
grade 1 events	0	0	0	1530	0	0
	0%	0%	0%	0%	0%	0%
grade 2 events	0	0	0	95594	0	0
	0%	0%	0%	25%	0%	0%
grade 3 events	0	0	0	36410	0	0
	0%	0%	0%	9%	0%	0%
grade 4 events	0	0	0	35691	0	0
	0%	0%	0%	9%	0%	0%
grade 5 events	0	0	0	6773	0	0
	0%	0%	0%	1%	0%	0%
grade 6 events	0	0	0	89126	0	0
	0%	0%	0%	23%	0%	0%
grade 7 events	0	0	0	32118	0	0
	0%	0%	0%	8%	0%	0%

2.2 Compared Parameters

Parameter	Planned	Actual	Parameter	Planned	Actual
Instrument	ACIS	ACIS	Obspar format version number	6	6
Detector	ACIS-235678	ACIS-456789	Obspar file type	PREDICTED	ACTUAL
Grating	NONE	NONE	Obspar update status	NONE	UPDATED
Data mode	FAINT	FAINT	CCD I0 on	N	N
Observation mode	POINTING	POINTING	CCD I1 on	N	N
Pointing RA	350.864962	350.815869114124	CCD I2 on	Y	N
Pointing Dec	58.835476	58.84526168867087	CCD I3 on	Y	N
Pointing Roll	127.610003	127.8087238819825	CCD S0 on	N	Y
Window start time	110332864.184000	110332864.184000	CCD S1 on	Y	Y
Window stop time	112838464.184000	112838464.184000	CCD S2 on	Y	Y
SIM focus pos (mm)	-0.684267	-0.6828225247311905	CCD S3 on	Y	Y
SIM defocus (mm)	0	0.001444936568705701	CCD S4 on	Y	Y
SIM translation stage pos (mm)	-190.132523	-190.1400660498719	CCD S5 on	N	Y
SIM translation stage offset (mm)	0	0.00754346686406393	Number of optional ACIS chips dropped	0	0
Observation start time	111386983.184000	111385938.02285	On-chip summing requested	N	N
Observation start date	2001-07-13T04:48:39	2001-07-13T04:32:18	Subarray requested	NONE	NONE
Observation end time	111388983.184000	111389163.18548	Alternating exposures requested	N	N
Observation end date	2001-07-13T05:21:59	2001-07-13T05:26:03	Primary exposure time	0.000000	3.2
Read mode	TIMED	TIMED			

2.3 Aspect



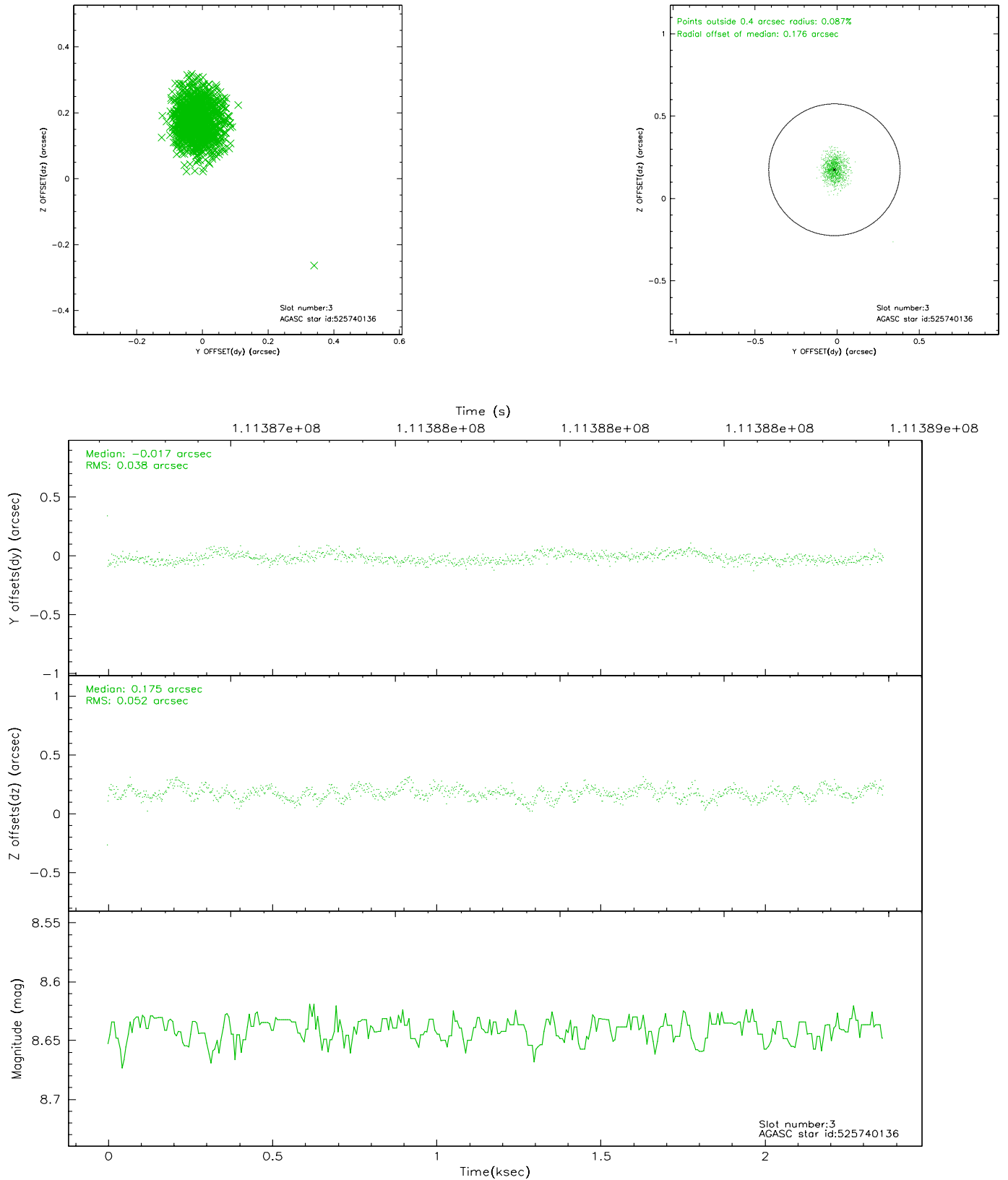


Slot Statistics

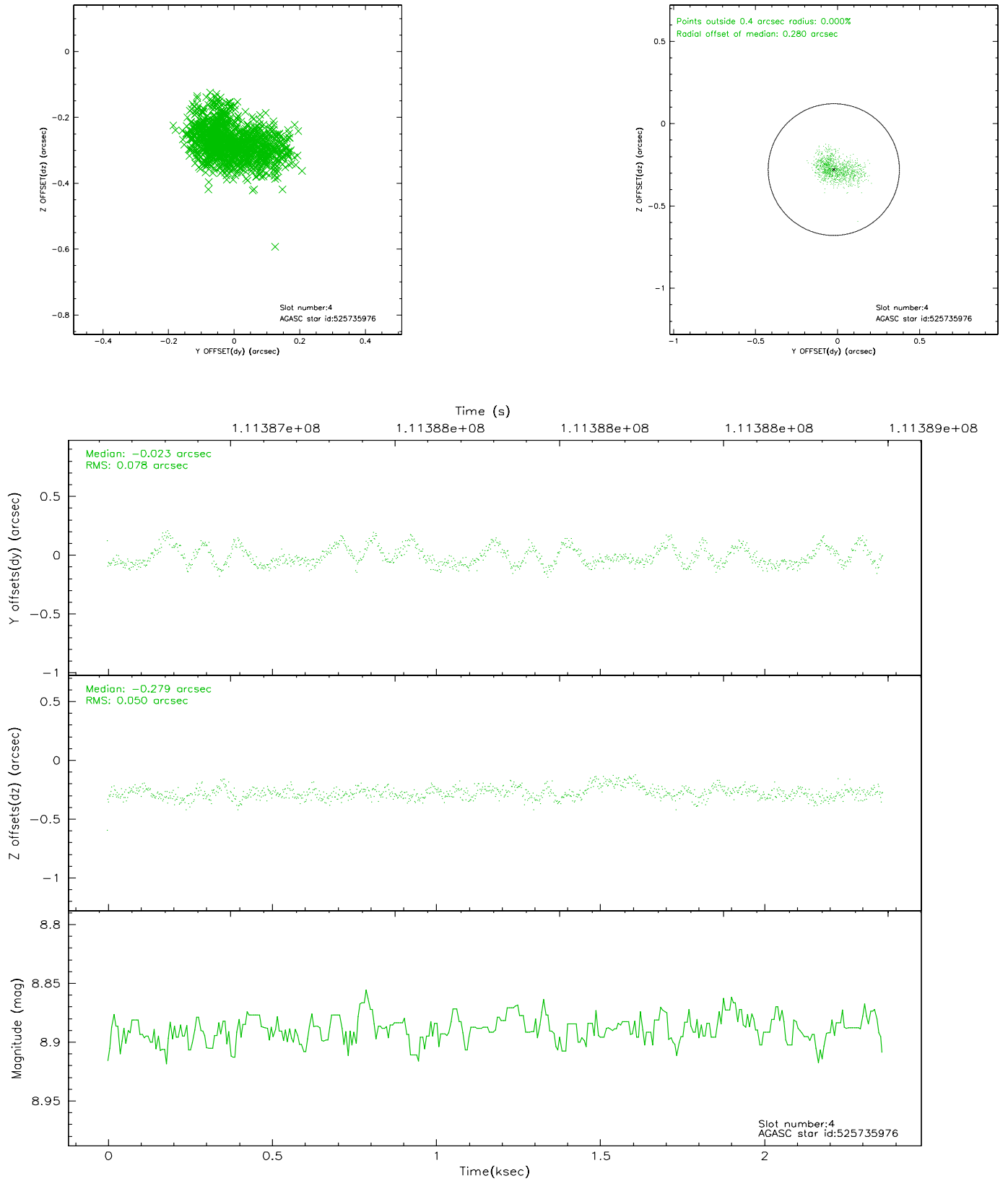
slot	status	id	mag	n_pts	med_dy	med_dz	dr1	dr2	ra	dec	mean_y	mean_z
0	FID	ACIS-S-2	7.11	577	-0.029	0.021	0.006	0.011	0.000000	0.000000	-755.00	-1726.84
1	FID	ACIS-S-4	7.20	577	-0.062	0.009	0.005	0.009	0.000000	0.000000	2156.96	178.88
2	FID	ACIS-S-5	7.24	577	0.061	-0.021	0.005	0.010	0.000000	0.000000	-1804.26	175.54
3	GUIDE	525740136	8.64	1153	-0.017	0.175	0.068	0.110	352.585881	58.767876	-2119.62	-2421.47
4	GUIDE	525735976	8.89	1154	-0.023	-0.279	0.097	0.164	350.142956	58.277622	-752.79	2301.18
5	GUIDE	525736400	9.07	1154	0.043	0.071	0.071	0.122	350.974563	59.175145	845.40	-904.48
6	GUIDE	525732528	9.36	1154	0.031	0.221	0.101	0.167	351.607241	59.298932	496.63	-2104.26
7	GUIDE	525606576	9.44	1153	-0.041	-0.190	0.104	0.180	349.543555	58.678895	1082.36	2286.06

2.4 Star Slots

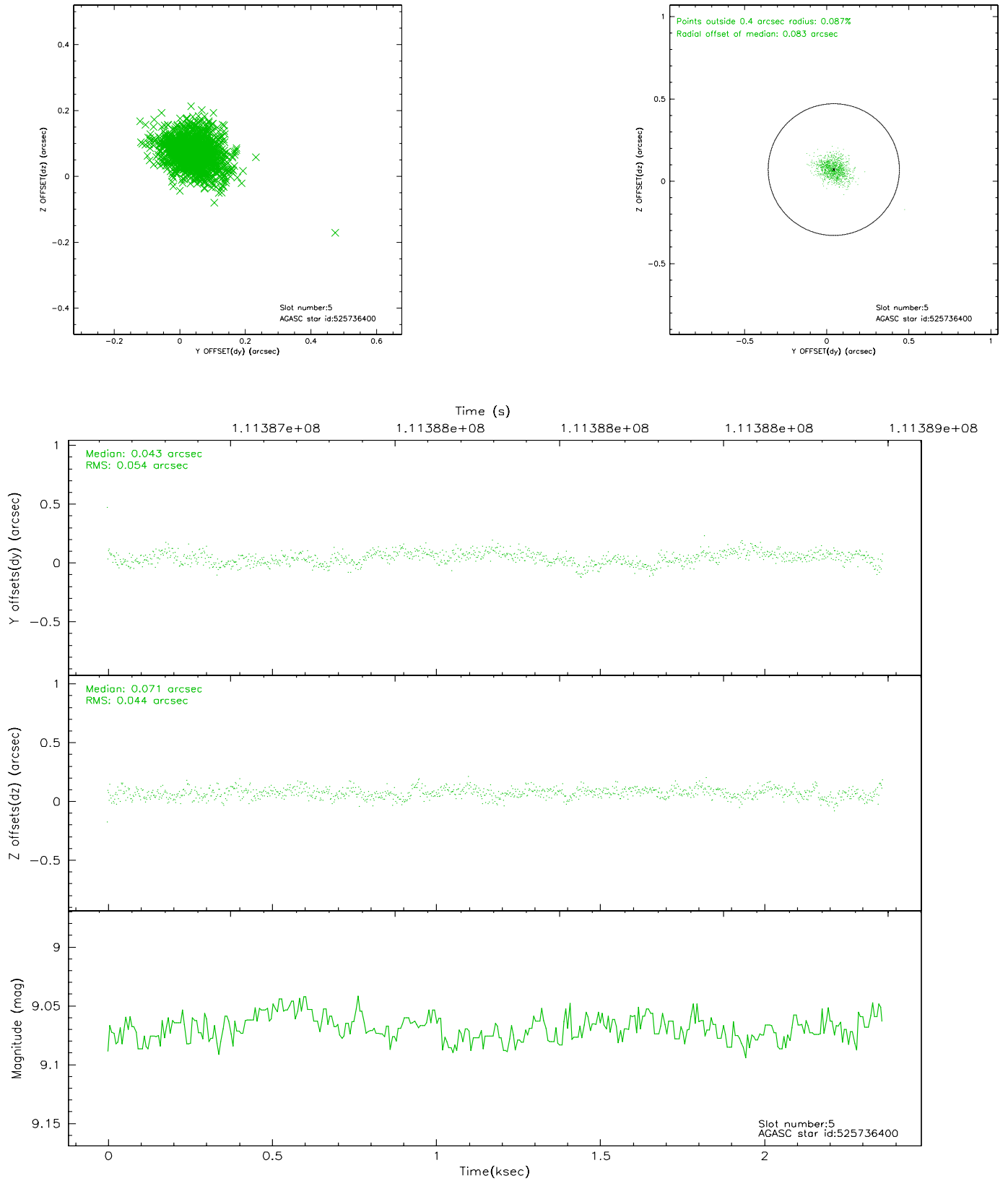
2.4.1 Slot 3



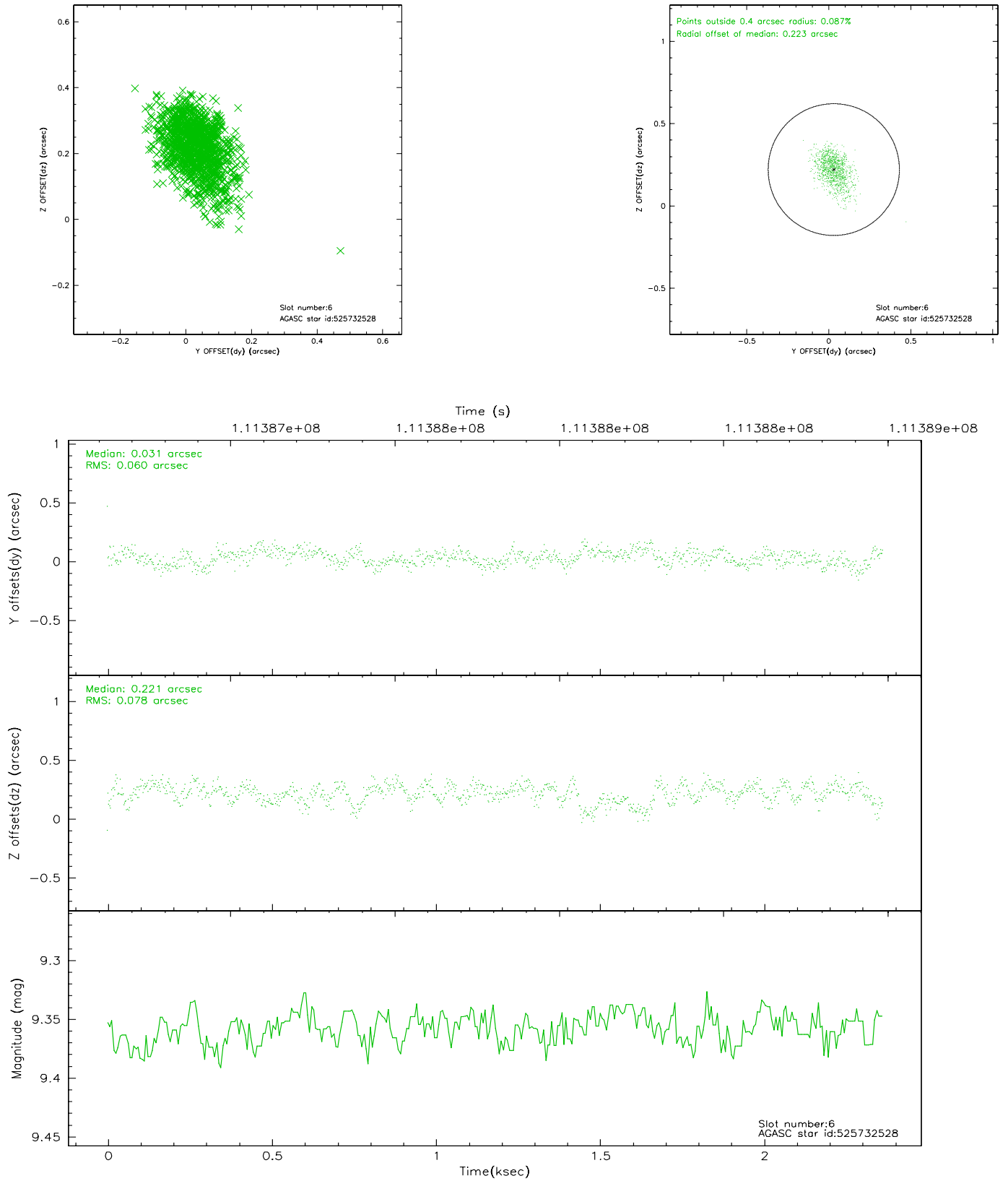
2.4.2 Slot 4



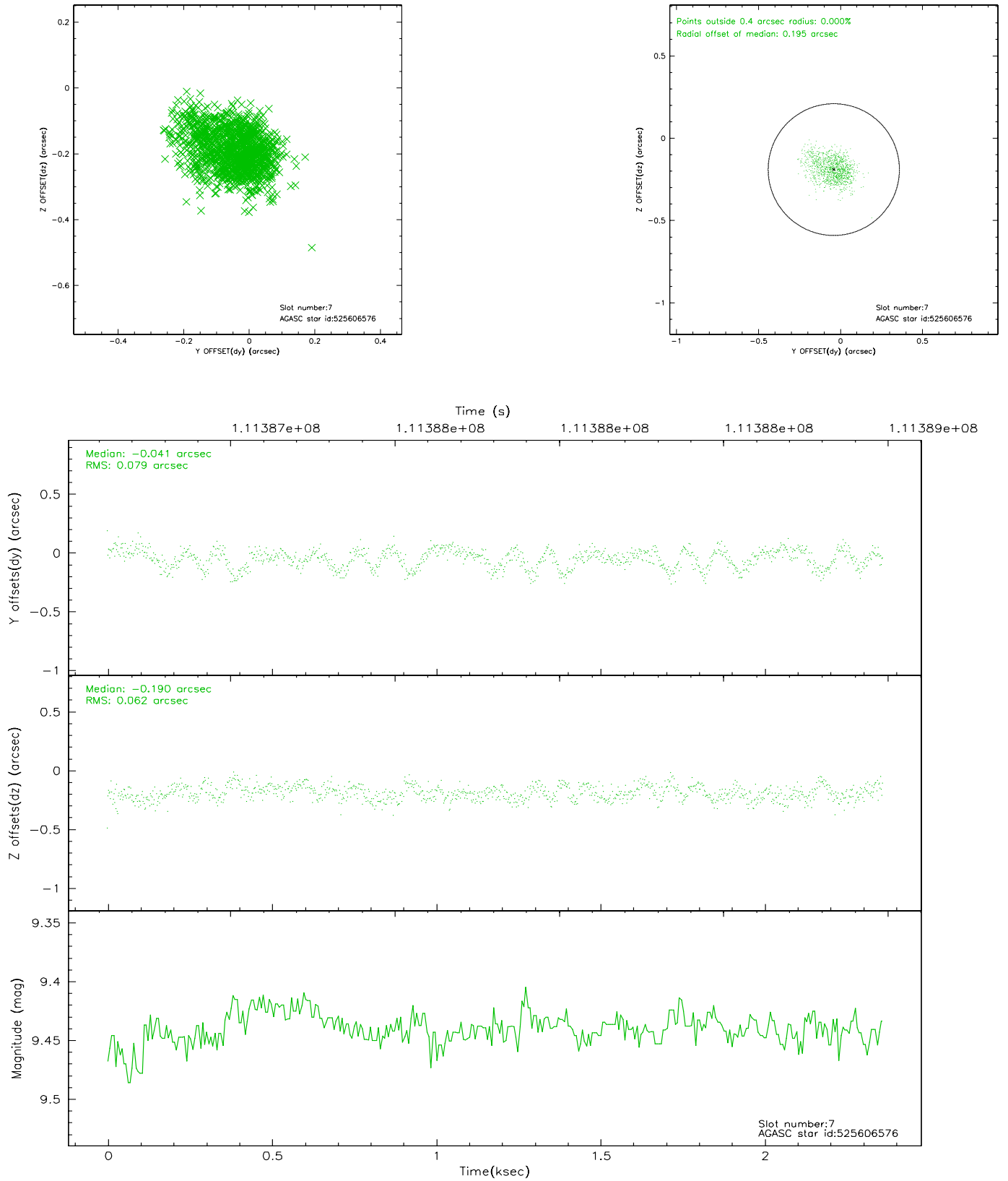
2.4.3 Slot 5



2.4.4 Slot 6

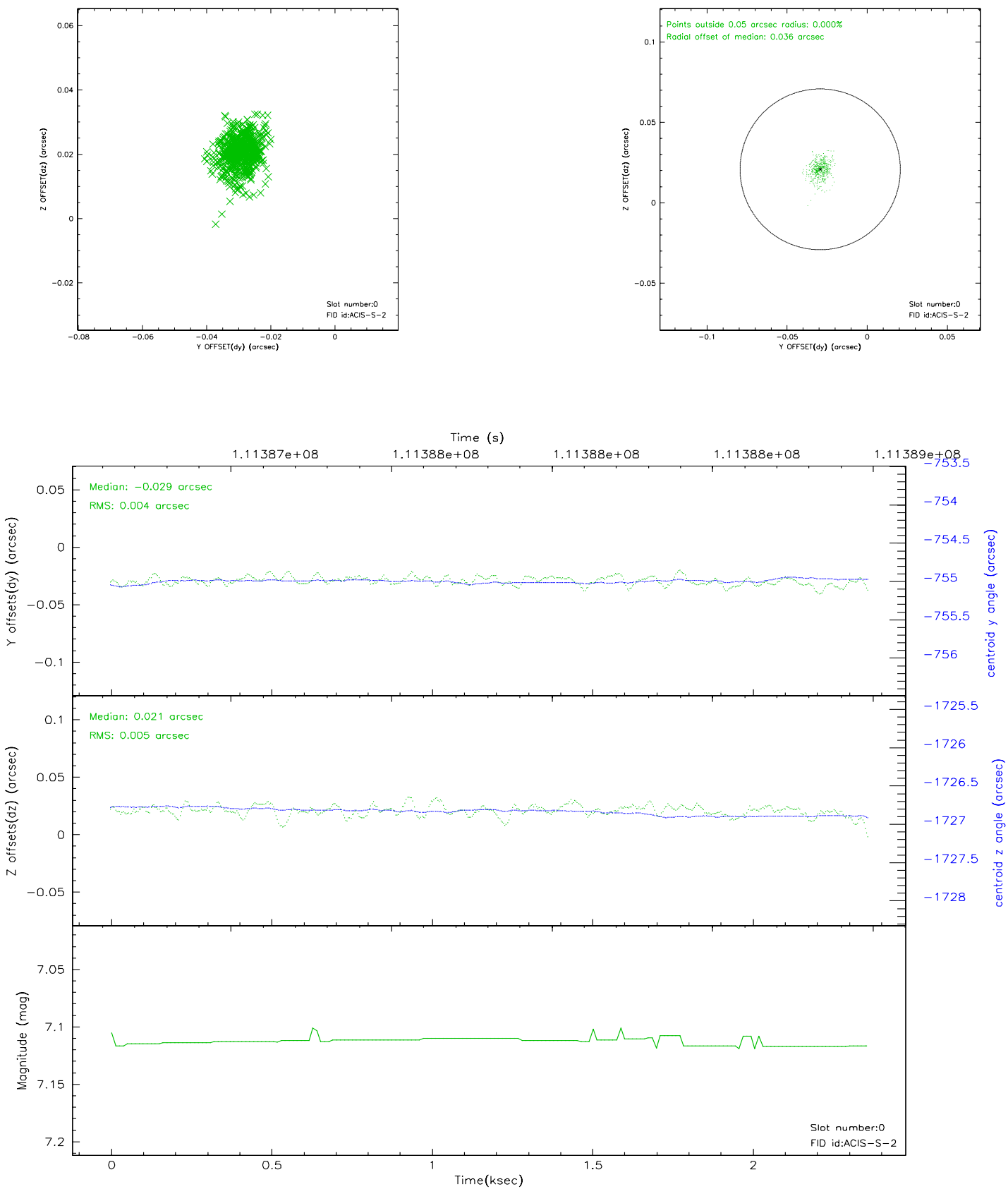


2.4.5 Slot 7

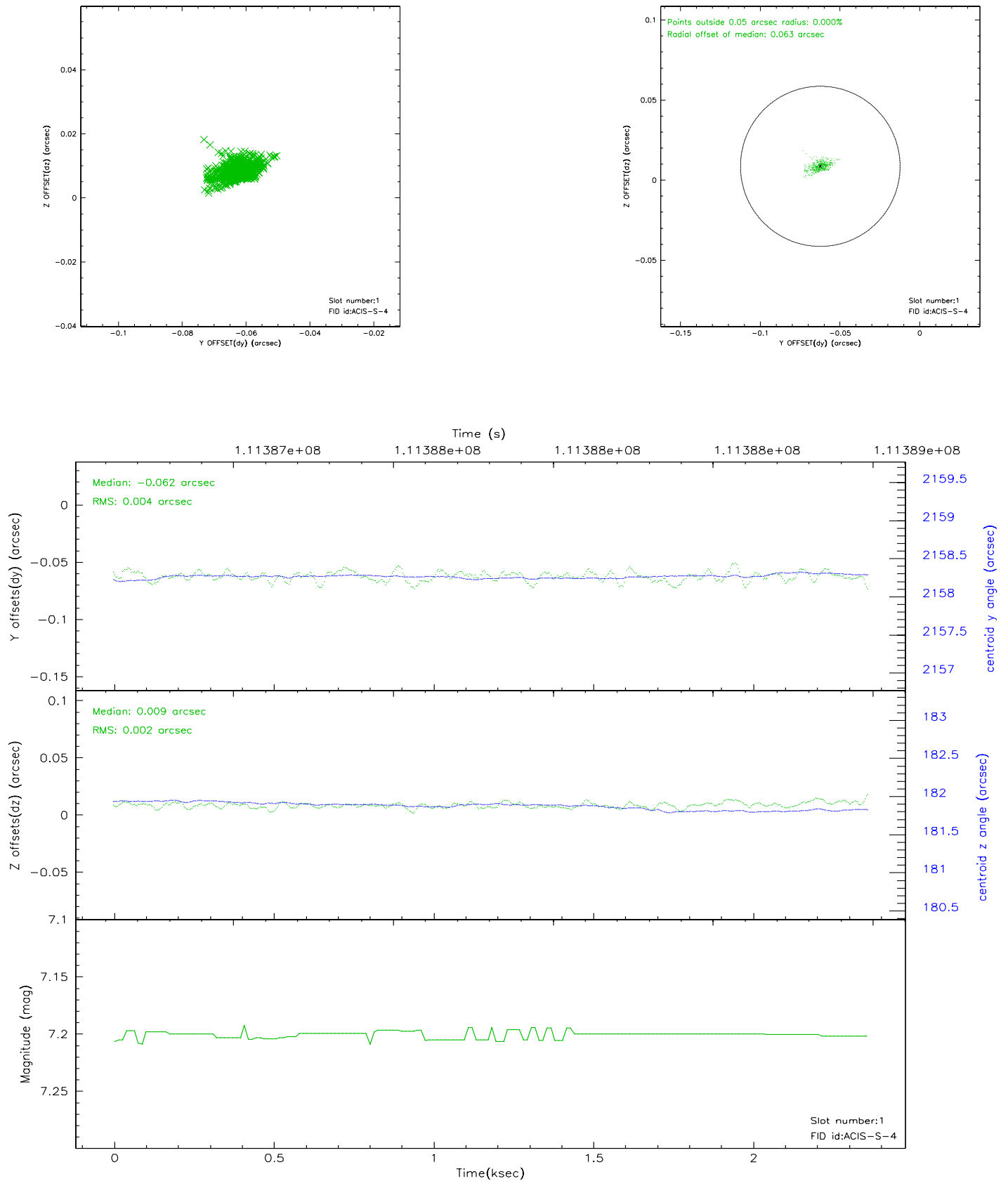


2.5 FID Slots

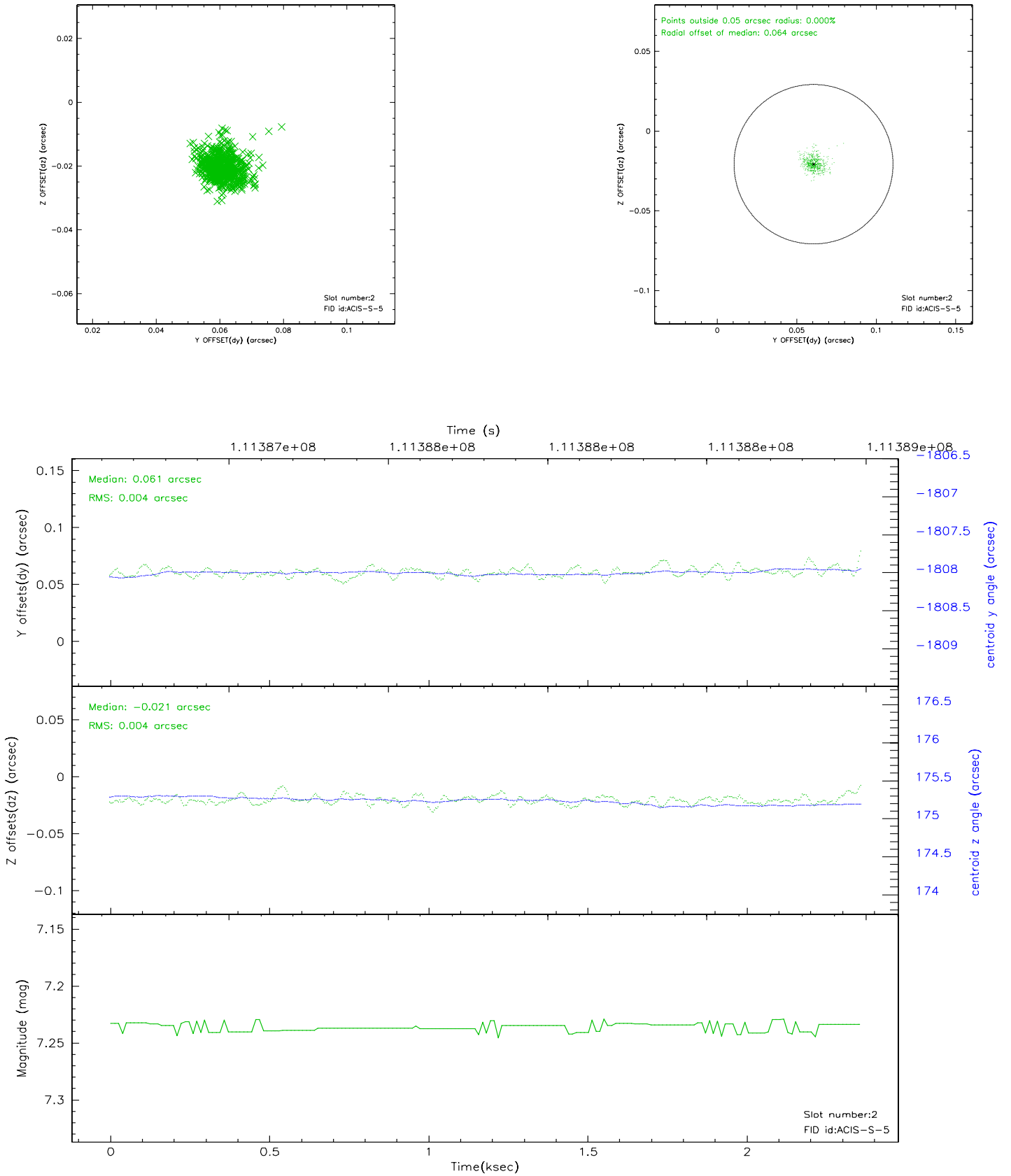
2.5.1 Slot 0



2.5.2 Slot 1



2.5.3 Slot 2



3 Point Sources

2.55 arcmin



A Summary

A.1 Status

V&V Scientist	Joy Nichols
V&V Date (YYYY-MM-DD)	2006.12.14
V&V Edition	1
V&V Disposition and Status	OK
V&V Charge Time	1.08

A.2 Comments

Charge time for this ObsId remains at original value of 1.08 ks, although with the current processing the charge time would have been 1.077 ksec. Although 6 chips were turned on for this observation, all but S3 were excluded from telemetry. Only chip S3 is usable. The entire Cas A supernova remnant is on S3.

There are many dropped exposures due to telemetry saturation.