

# V&V Reference Report

## L2 ASCDS Version : 7.6.9

Observation 1543 - L2 Version 001  
Chandra X-Ray Center

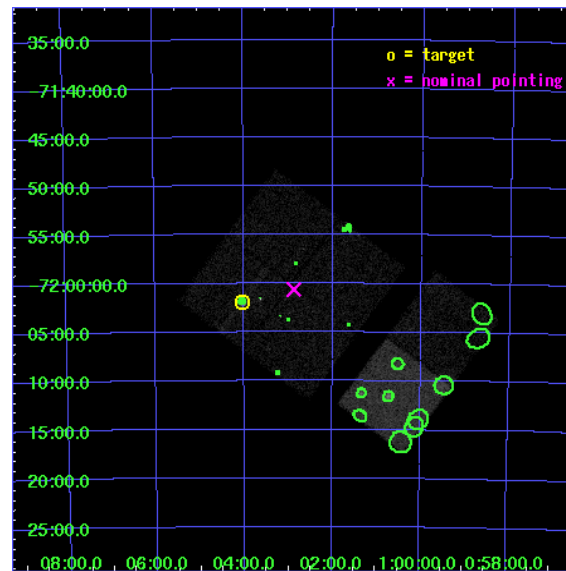
L2 Processing Date : Nov 25 2006

## Contents

<b>1</b>	<b>Front</b>	<b>2</b>
<b>2</b>	<b>OBI</b>	<b>3</b>
2.1	OBI . . . . .	3
2.1.1	Images . . . . .	3
2.1.2	Bias . . . . .	3
2.1.3	Parameters . . . . .	4
2.1.4	Events . . . . .	4
2.2	Compared Parameters . . . . .	5
2.3	Aspect . . . . .	6
2.4	Star Slots . . . . .	9
2.4.1	Slot 3 . . . . .	9
2.4.2	Slot 4 . . . . .	10
2.4.3	Slot 5 . . . . .	11
2.4.4	Slot 6 . . . . .	12
2.4.5	Slot 7 . . . . .	13
2.5	FID Slots . . . . .	14
2.5.1	Slot 0 . . . . .	14
2.5.2	Slot 1 . . . . .	15
2.5.3	Slot 2 . . . . .	16
<b>3</b>	<b>Point Sources</b>	<b>17</b>
<b>A</b>	<b>Summary</b>	<b>18</b>
A.1	Status . . . . .	18
A.2	Comments . . . . .	18

# 1 Front

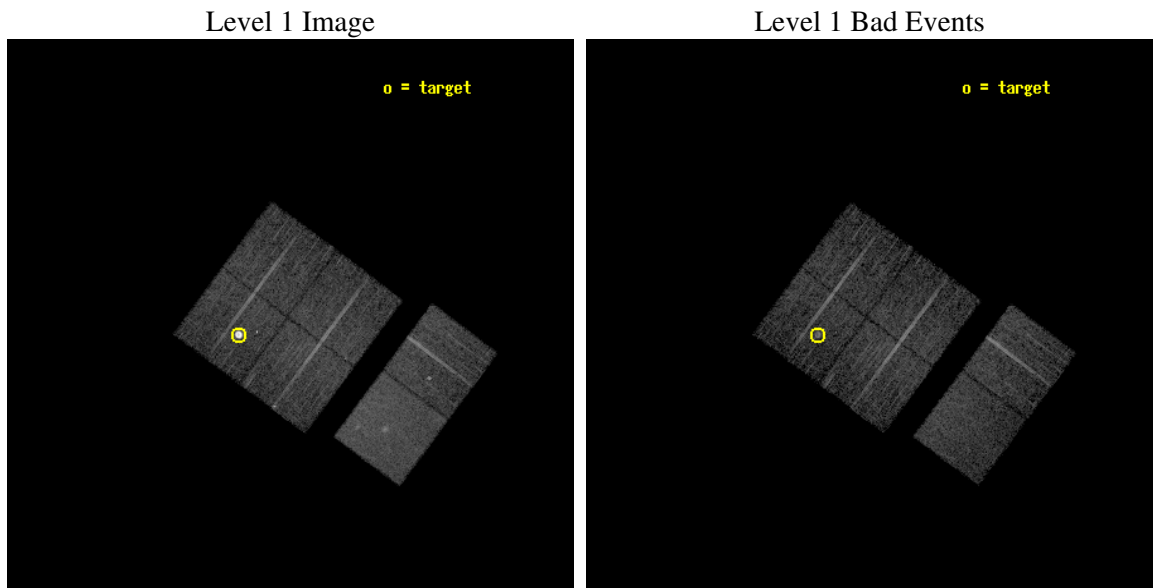
seq_num	590152
obs_id	1543
title	ACIS CALIBRATION OBSERVATION OF THE SUPERNOVA REMNANT E0102-72 (JUNE 2001)
observer	Dr. CXC Calibration
object	E0102-72.3 [Chip I1, T=120, Offsets=-4,-3,0]
dtcycle	0
cycle	P
ra_targ	16.01
dec_targ	-72.032028
ra_nom	15.71799578704
dec_nom	-72.010524434324
roll_nom	126.69905687467
revision	2
ontime	7513.6000069976
livetime	7418.4582795622
ontime0	7513.6000069976
ontime1	7513.6000069976
ontime2	7513.6000069976
ontime3	7513.6000069976
ontime6	7513.6000069976
ontime7	7513.6000069976
l2events	77212



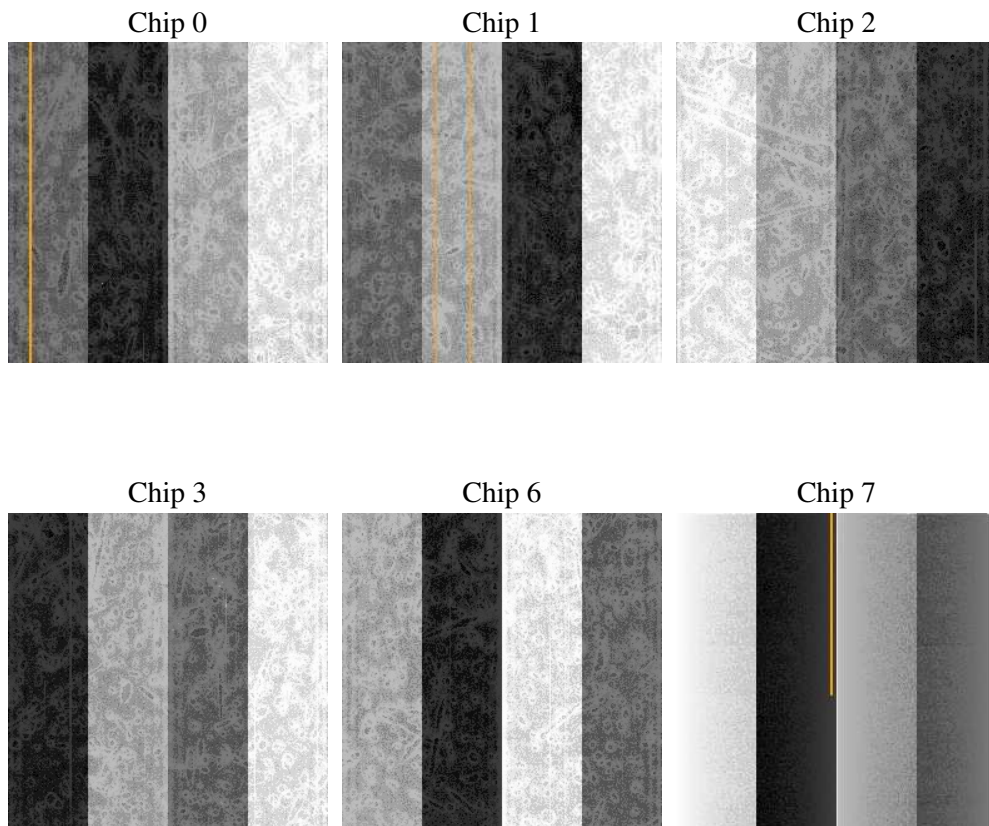
## 2 OBI

### 2.1 OBI

#### 2.1.1 Images



#### 2.1.2 Bias



### 2.1.3 Parameters

obi_num	0
ascdsver	7.6.9
caldbver	3.2.4
date	2006-11-25T07:39:57
revision	2

sched_exp_time	7755.000000
ontime	7519.1169826835
ontime0	7519.1169826835
ontime1	7519.1169826835
ontime2	7519.116952762
ontime3	7519.1169826835
ontime6	7519.116952762
ontime7	7519.1169826835
l1events	334210

### 2.1.4 Events

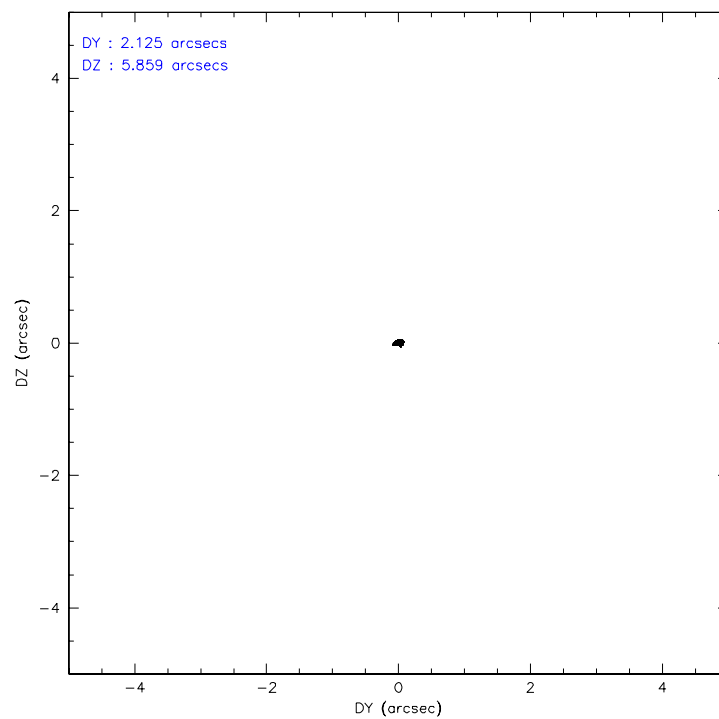
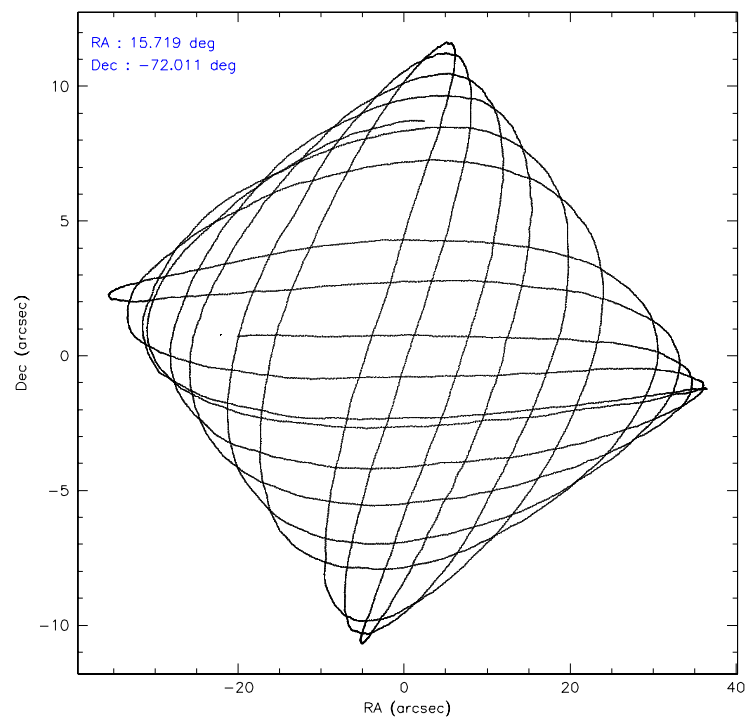
	ccd 0	ccd 1	ccd 2	ccd 3	ccd 6	ccd 7
level 1 events	45126	71631	49373	50580	52429	65071
rejected events	39388	38403	43333	44340	45742	39071
rejected %	87%	53%	87%	87%	87%	60%

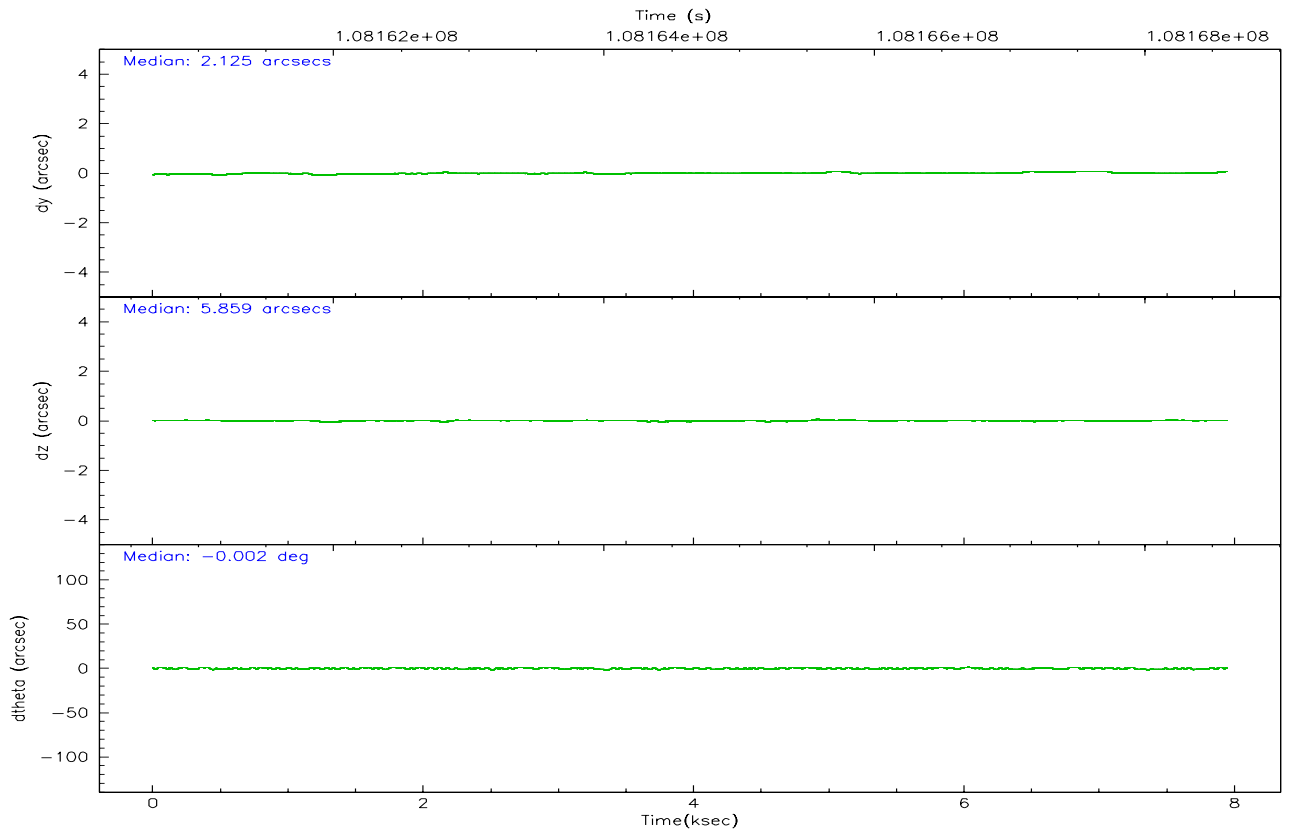
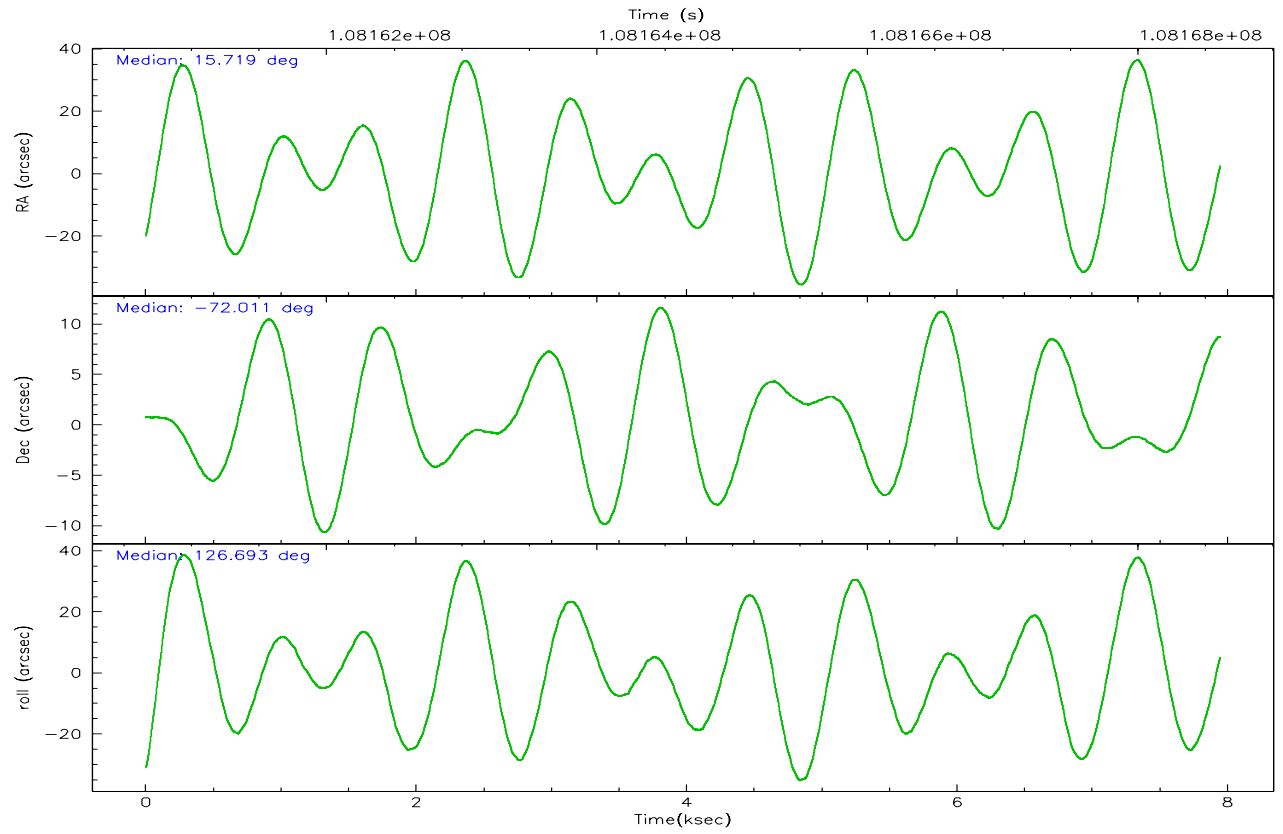
	ccd 0	ccd 1	ccd 2	ccd 3	ccd 6	ccd 7
grade 0 events	2518	26403	2655	2955	2982	2053
	5%	36%	5%	5%	5%	3%
grade 1 events	21	256	28	26	31	51
	0%	0%	0%	0%	0%	0%
grade 2 events	1195	3249	1282	1132	1277	6500
	2%	4%	2%	2%	2%	9%
grade 3 events	519	1101	524	588	619	1526
	1%	1%	1%	1%	1%	2%
grade 4 events	490	1125	531	579	602	1446
	1%	1%	1%	1%	1%	2%
grade 5 events	1659	1910	1653	1838	2108	4255
	3%	2%	3%	3%	4%	6%
grade 6 events	1024	1372	1053	995	1212	14490
	2%	1%	2%	1%	2%	22%
grade 7 events	37700	36215	41647	42467	43598	34750
	83%	50%	84%	83%	83%	53%

## 2.2 Compared Parameters

Parameter	Planned	Actual	Parameter	Planned	Actual
Instrument	ACIS	ACIS	Obspar format version number	6	6
Detector	ACIS-012367	ACIS-012367	Obspar file type	PREDICTED	ACTUAL
Grating	NONE	NONE	Obspar update status	NONE	UPDATED
Data mode	FAINT	FAINT	Number of optional ACIS chips dropped	0	0
Observation mode	POINTING	POINTING	On-chip summing requested	N	N
Pointing RA	15.799705	15.71799578704018	Subarray requested	NONE	NONE
Pointing Dec	-72.021328	-72.0105244343238	Alternating exposures requested	N	N
Pointing Roll	126.568087	126.699056874675	Primary exposure time	0.000000	3.2
Window start time	107740864.184000	107740864.184000			
Window stop time	110246464.184000	110246464.184000			
SIM focus pos (mm)	-0.782348	-0.7809083437167272			
SIM defocus (mm)	0	0.001439871863259334			
SIM translation stage pos (mm)	-233.592463	-233.5874344608287			
SIM translation stage offset (mm)	0	-0.005018542100998502			
Observation start time	108160856.184000	108160480.19696			
Observation start date	2001-06-05T20:39:52	2001-06-05T20:34:40			
Observation end time	108168611.184000	108168744.77228			
Observation end date	2001-06-05T22:49:07	2001-06-05T22:52:24			
Read mode	TIMED	TIMED			

## 2.3 Aspect





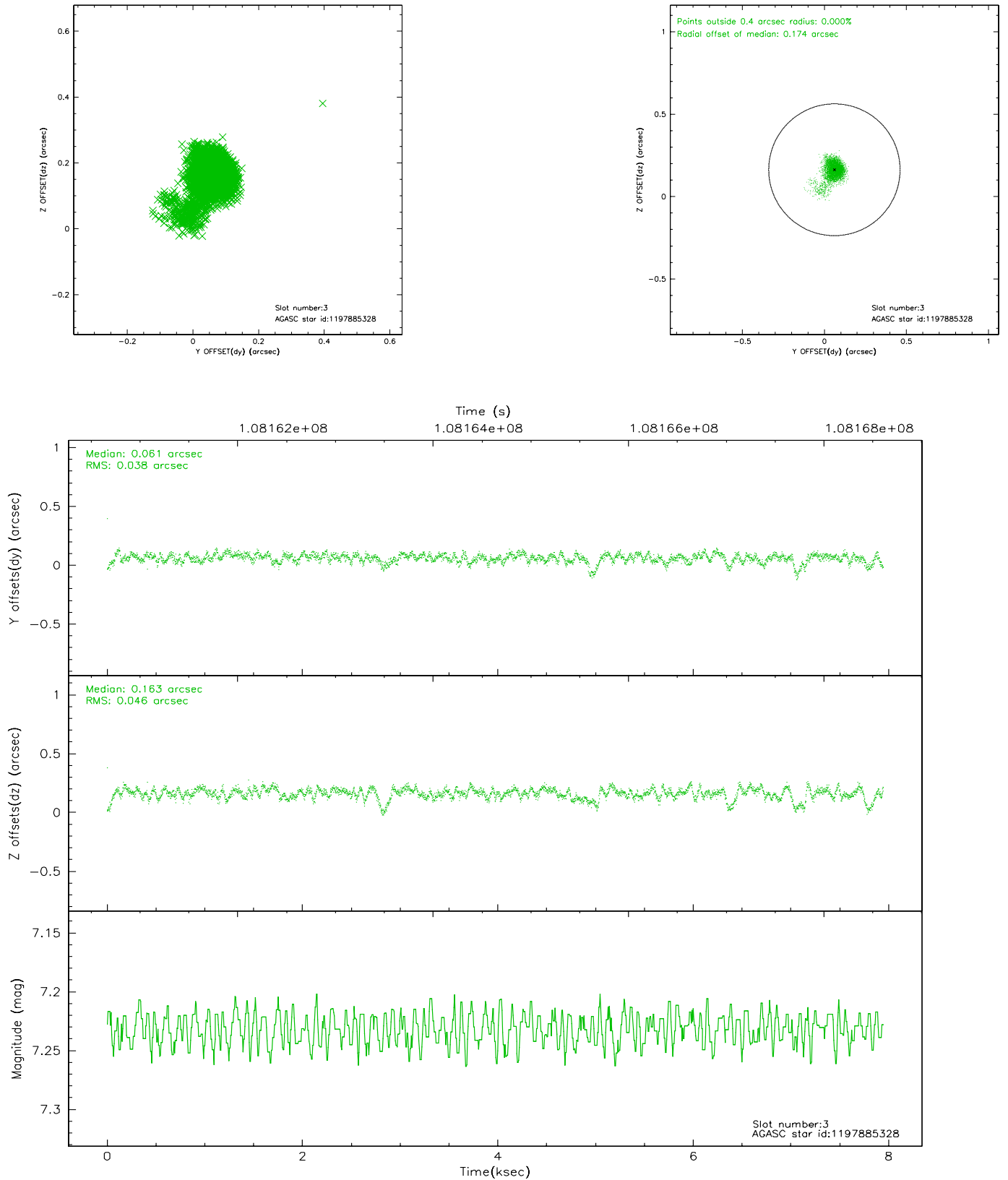
### Slot Statistics

slot	status	id	mag	n_pts	med_dy	med_dz	dr1	dr2	ra	dec	mean_y	mean_z
0	FID	ACIS-I-2	7.15	1938	-0.018	-0.024	0.010	0.017	0.000000	0.000000	-756.49	-835.61
1	FID	ACIS-I-4	7.18	1938	-0.073	0.026	0.008	0.016	0.000000	0.000000	2157.18	1070.27
2	FID	ACIS-I-5	7.23	1938	-0.010	0.066	0.009	0.016	0.000000	0.000000	-1809.41	1068.95
3	GUIDE	1197885328	7.23	3877	0.061	0.163	0.055	0.126	16.283090	-71.733943	505.14	-1052.87
4	GUIDE	1198189696	7.35	3877	0.230	-0.016	0.060	0.131	15.223750	-72.697522	-1589.24	1947.12
5	GUIDE	1197750936	7.58	3877	0.007	0.174	0.064	0.122	15.387940	-71.549550	1642.68	-633.04
6	GUIDE	1197884536	8.50	3876	0.124	0.147	0.065	0.116	17.160729	-71.835289	-384.42	-1615.27
7	BAD	1197749416	10.29	3576	-0.447	-0.490	0.125	0.202	13.610513	-71.871242	1859.73	1674.00

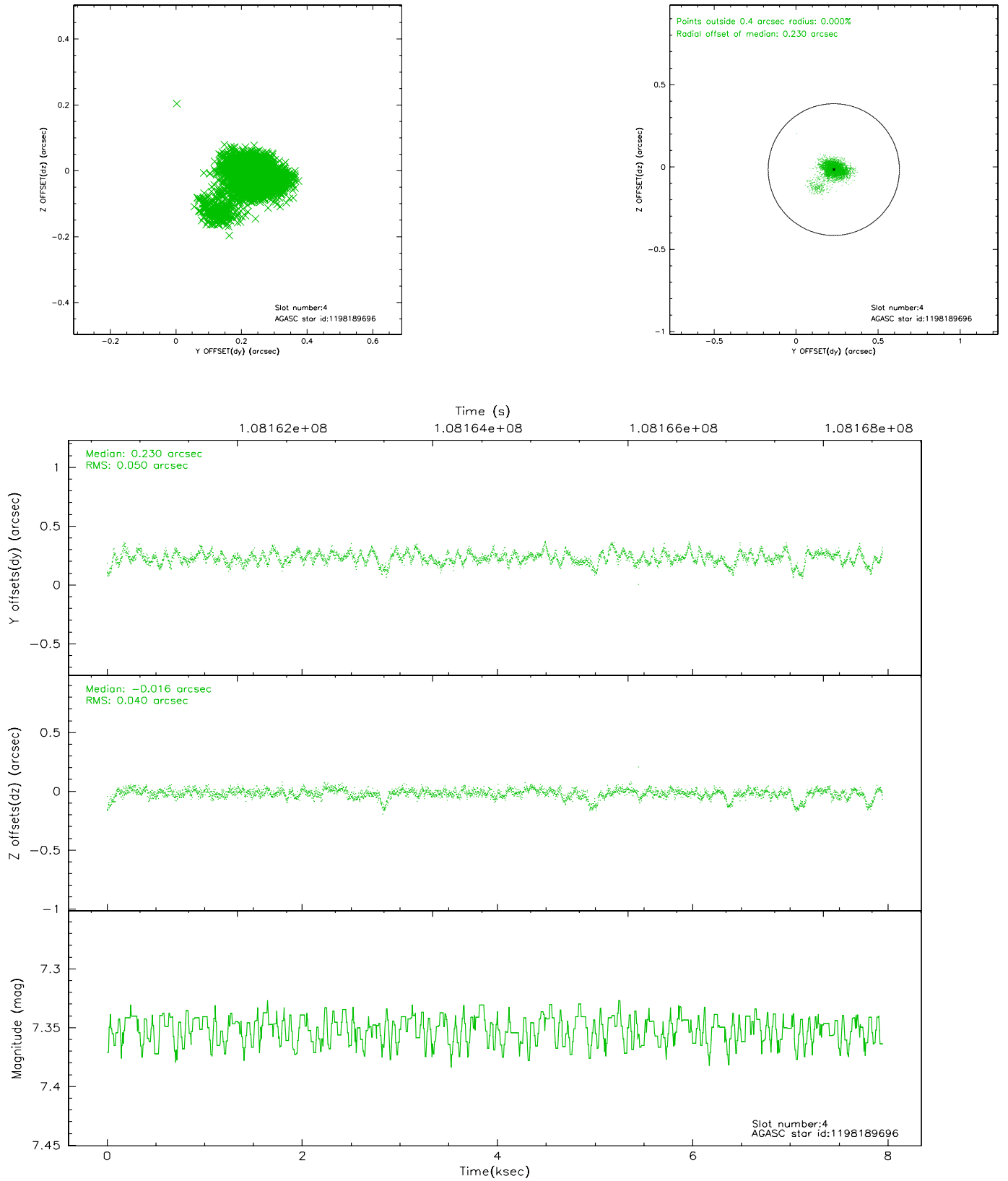


## 2.4 Star Slots

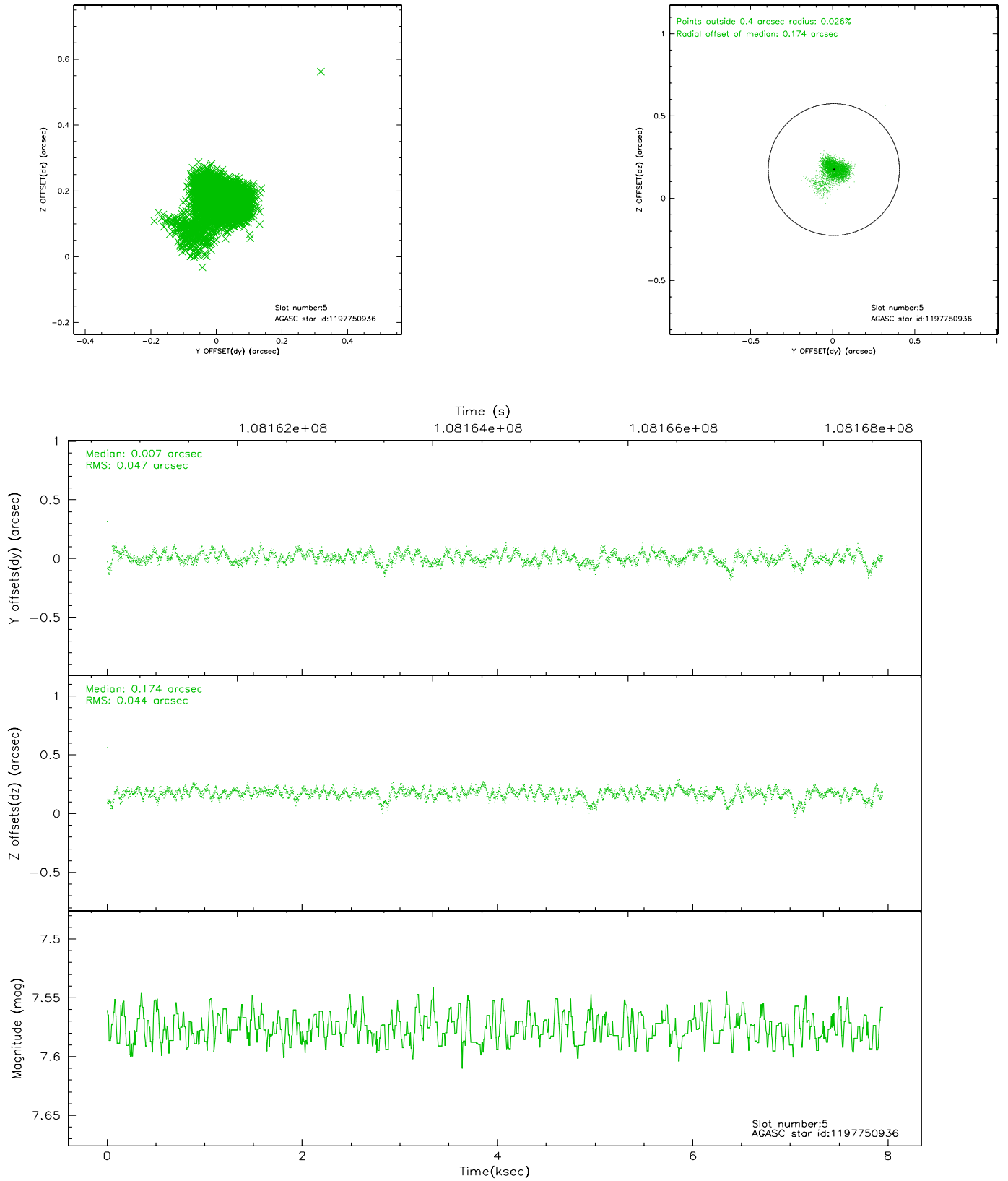
### 2.4.1 Slot 3



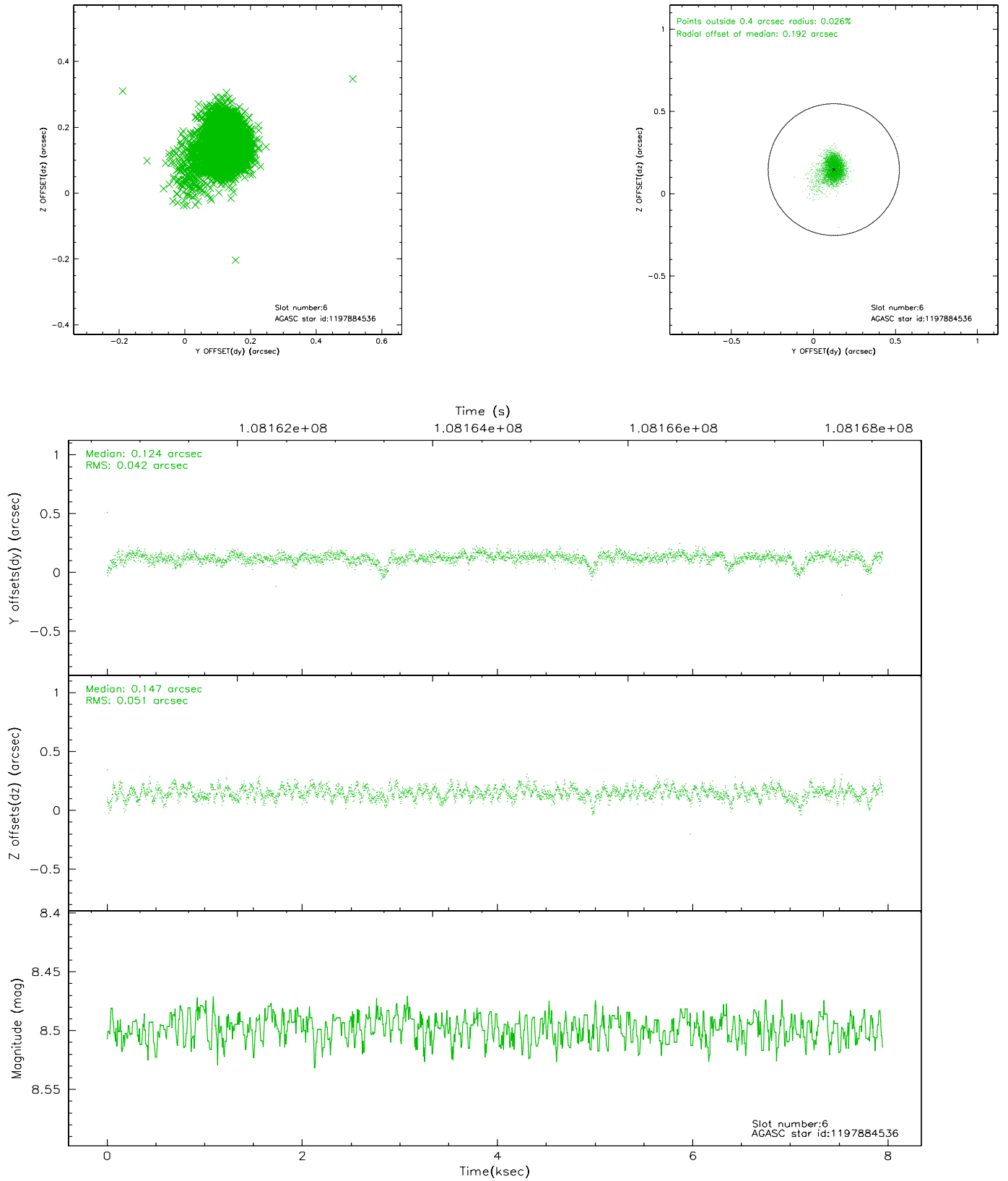
## 2.4.2 Slot 4



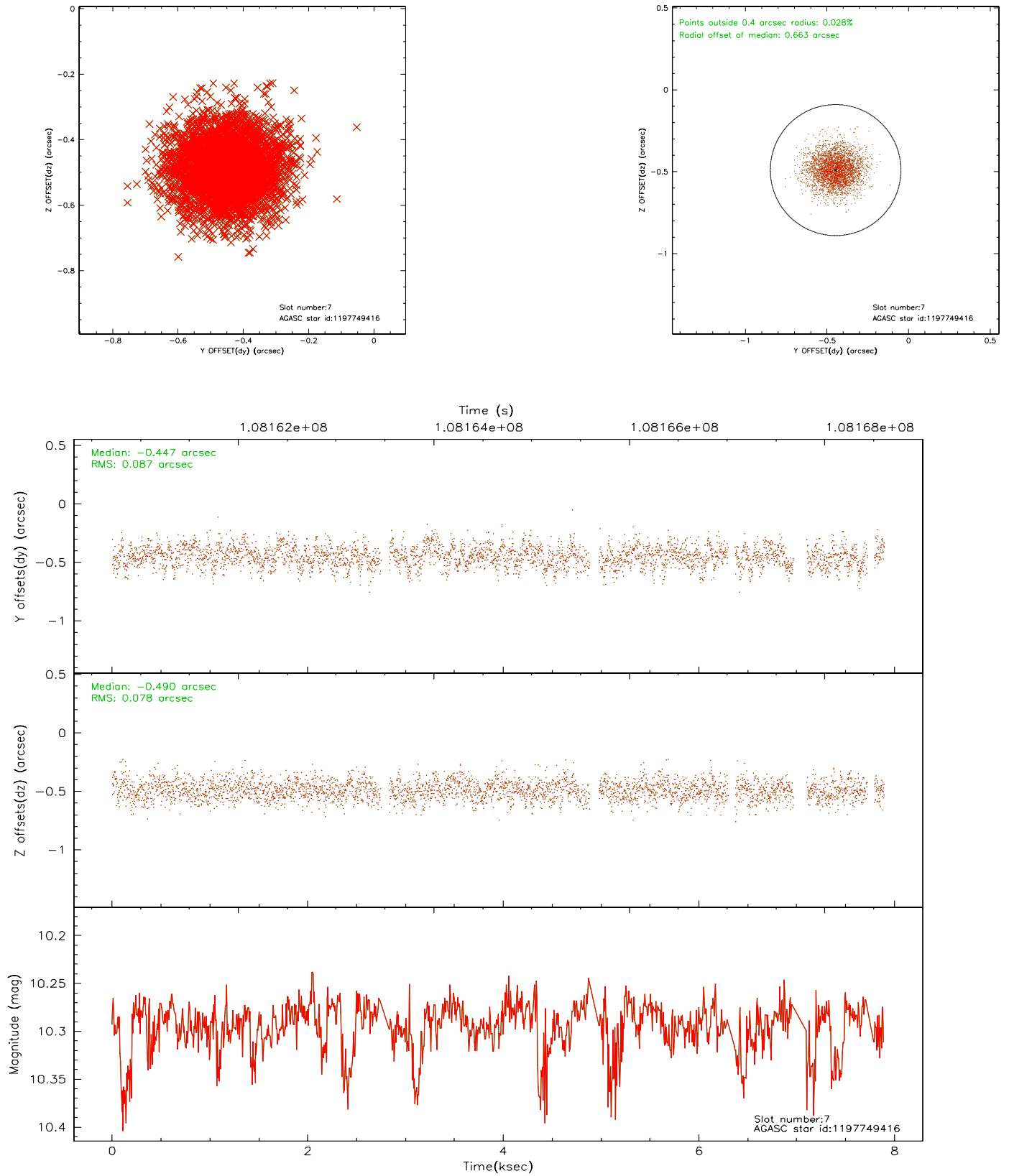
### 2.4.3 Slot 5



## 2.4.4 Slot 6

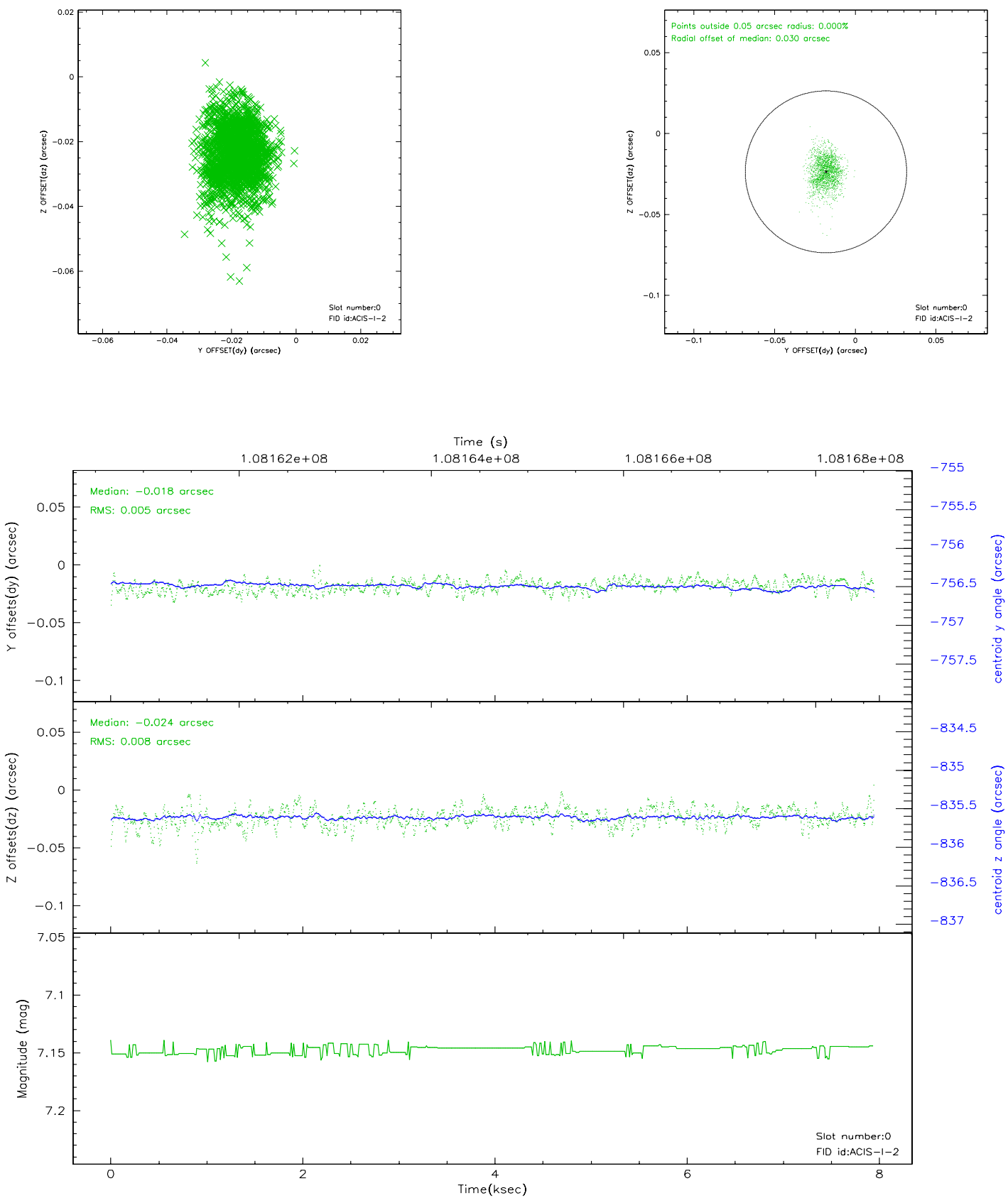


## 2.4.5 Slot 7

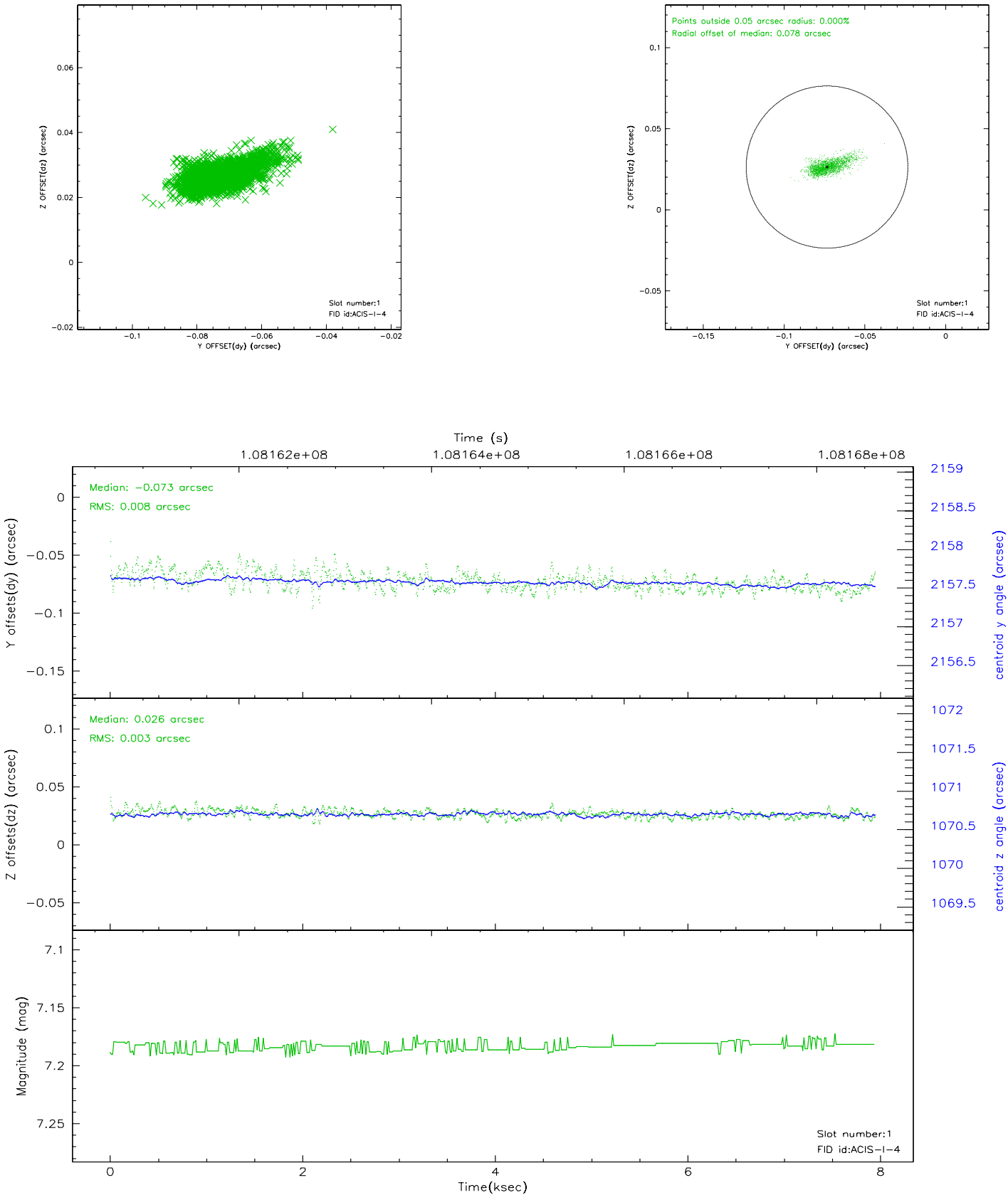


## 2.5 FID Slots

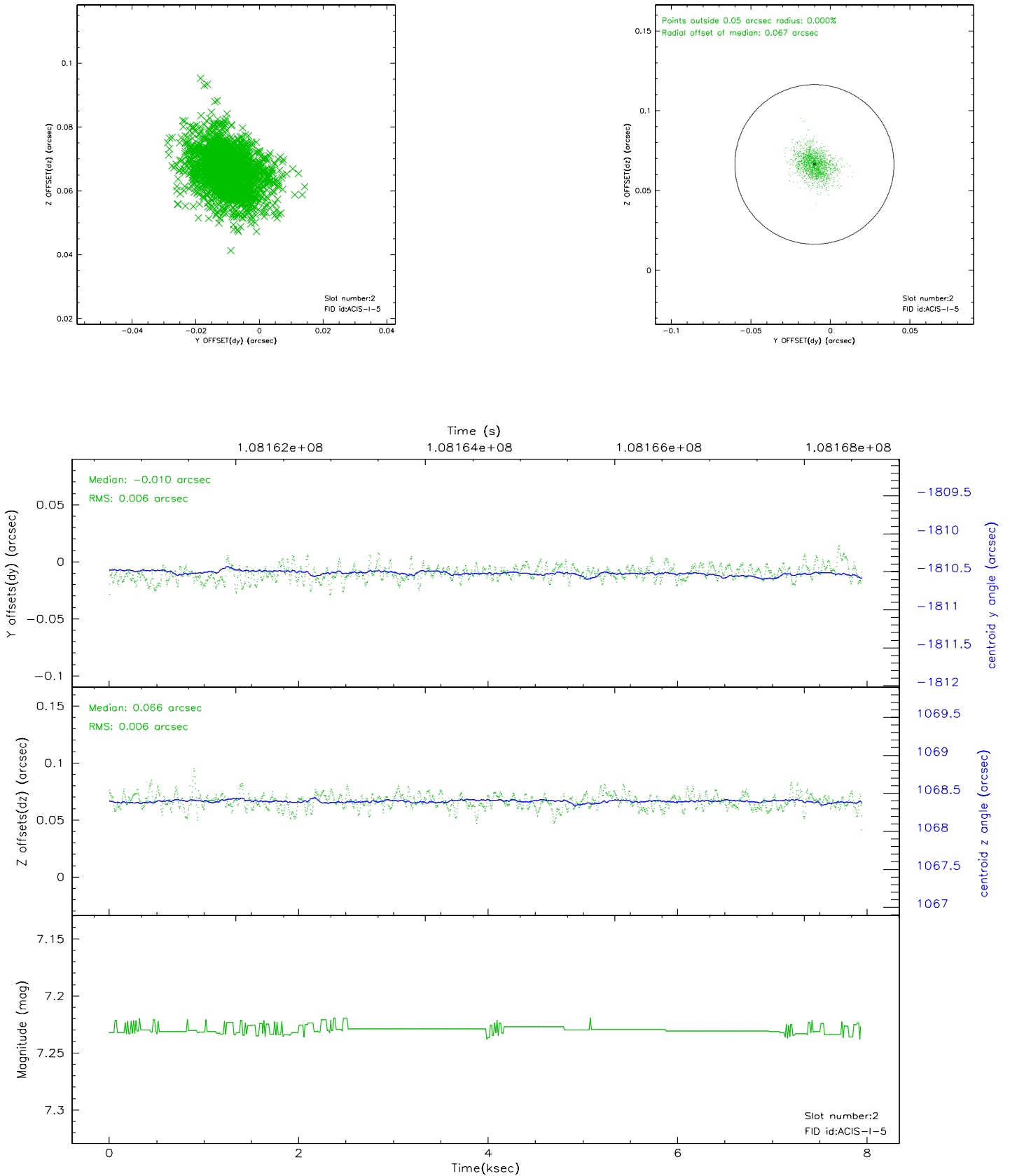
### 2.5.1 Slot 0



2.5.2 Slot 1

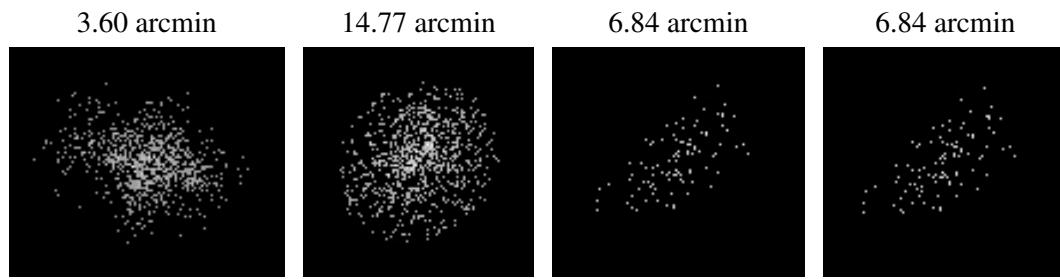


### 2.5.3 Slot 2





### 3 Point Sources



# A Summary

## A.1 Status

V&V Scientist	Beth Sundheim
V&V Date (YYYY-MM-DD)	2006.11.27
V&V Edition	1
V&V Disposition and Status	OK
V&V Charge Time	7.5

## A.2 Comments

Window constraint OK.

The guide star in slot 7 was excluded from the aspect solution due to poor data quality. The aspect solution is not expected to be degraded by removing one guide star or fid light from the solution.