

# V&V Reference Report

## L2 ASCDS Version : 7.6.9

Observation 1542 - L2 Version 001  
Chandra X-Ray Center

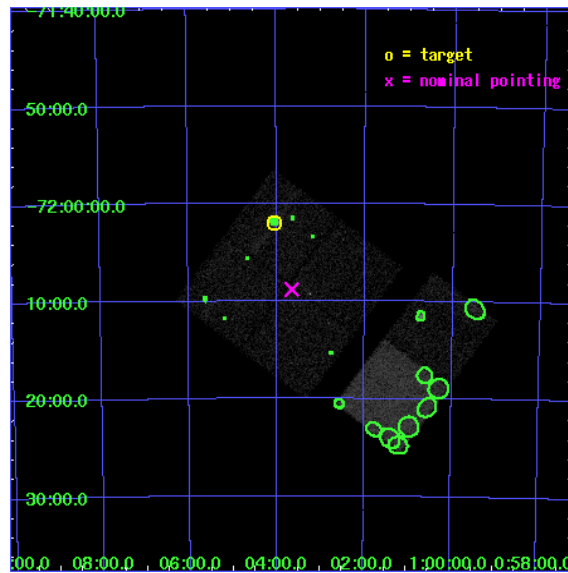
L2 Processing Date : Nov 25 2006

## Contents

<b>1</b>	<b>Front</b>	<b>2</b>
<b>2</b>	<b>OBI</b>	<b>3</b>
2.1	OBI . . . . .	3
2.1.1	Images . . . . .	3
2.1.2	Bias . . . . .	3
2.1.3	Parameters . . . . .	4
2.1.4	Events . . . . .	4
2.2	Compared Parameters . . . . .	5
2.3	Aspect . . . . .	6
2.4	Star Slots . . . . .	9
2.4.1	Slot 3 . . . . .	9
2.4.2	Slot 4 . . . . .	10
2.4.3	Slot 5 . . . . .	11
2.4.4	Slot 6 . . . . .	12
2.4.5	Slot 7 . . . . .	13
2.5	FID Slots . . . . .	14
2.5.1	Slot 0 . . . . .	14
2.5.2	Slot 1 . . . . .	15
2.5.3	Slot 2 . . . . .	16
<b>3</b>	<b>Point Sources</b>	<b>17</b>
<b>A</b>	<b>Summary</b>	<b>18</b>
A.1	Status . . . . .	18
A.2	Comments . . . . .	18

# 1 Front

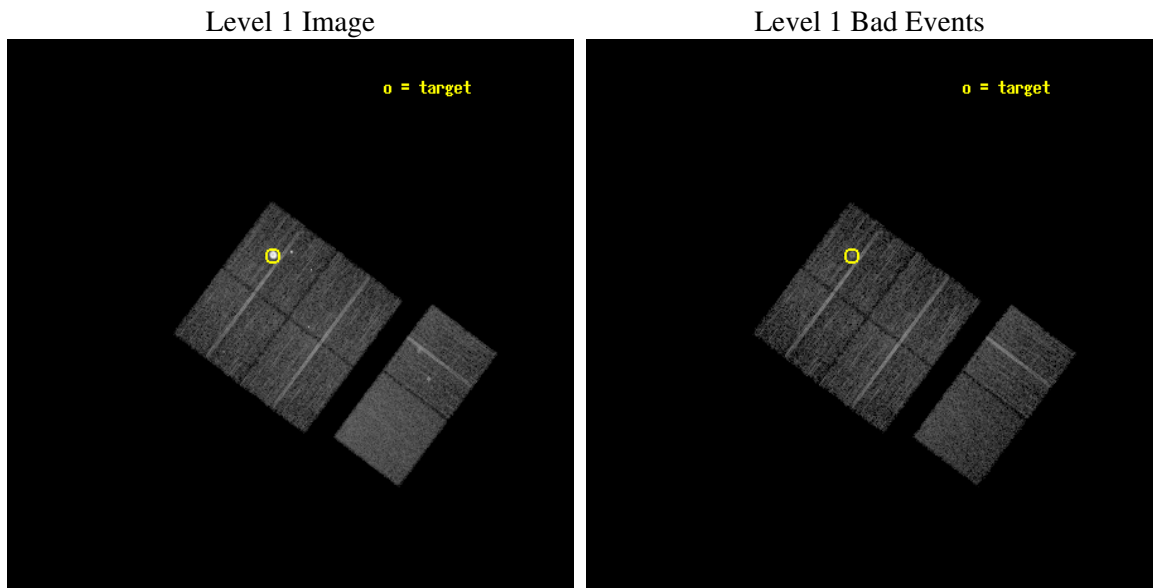
seq_num	590151
obs_id	1542
title	ACIS CALIBRATION OBSERVATION OF THE SUPERNOVA REMNANT E0102-72 (JUNE 2001)
observer	Dr. CXC Calibration
object	E0102-72.3 [Chip I0, T=120, Offsets=4,-5,0]
dtcycle	0
cycle	P
ra_targ	16.01
dec_targ	-72.032028
ra_nom	15.912339726662
dec_nom	-72.146835495623
roll_nom	126.94432099669
revision	2
ontime	7513.6000069976
livetime	7418.4582795622
ontime0	7513.6000069976
ontime1	7513.6000069976
ontime2	7513.6000069976
ontime3	7513.6000069976
ontime6	7513.6000069976
ontime7	7513.6000069976
l2events	75614



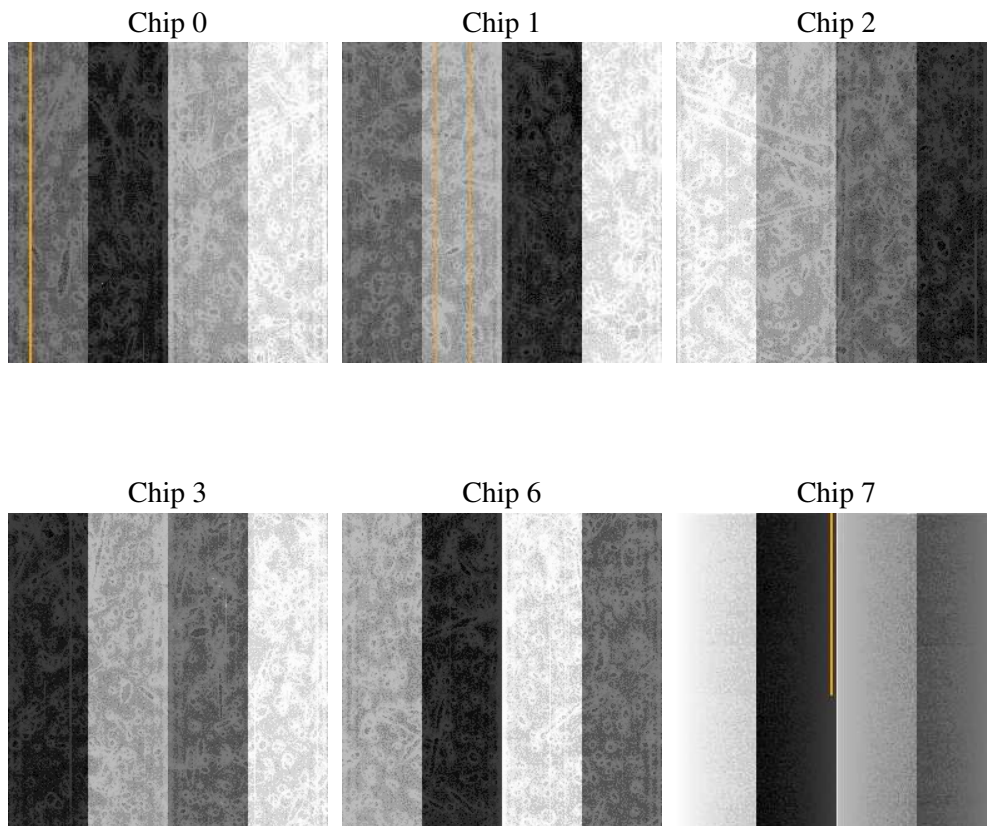
## 2 OBI

### 2.1 OBI

#### 2.1.1 Images



#### 2.1.2 Bias



### 2.1.3 Parameters

obi_num	0
ascdsver	7.6.9
caldbver	3.2.4
date	2006-11-25T07:04:30
revision	2

sched_exp_time	7755.000000
ontime	7519.1163027585
ontime0	7519.1163027585
ontime1	7519.1163027585
ontime2	7519.1163027585
ontime3	7519.1163226813
ontime6	7519.1163027585
ontime7	7519.1163027585
l1events	332780

### 2.1.4 Events

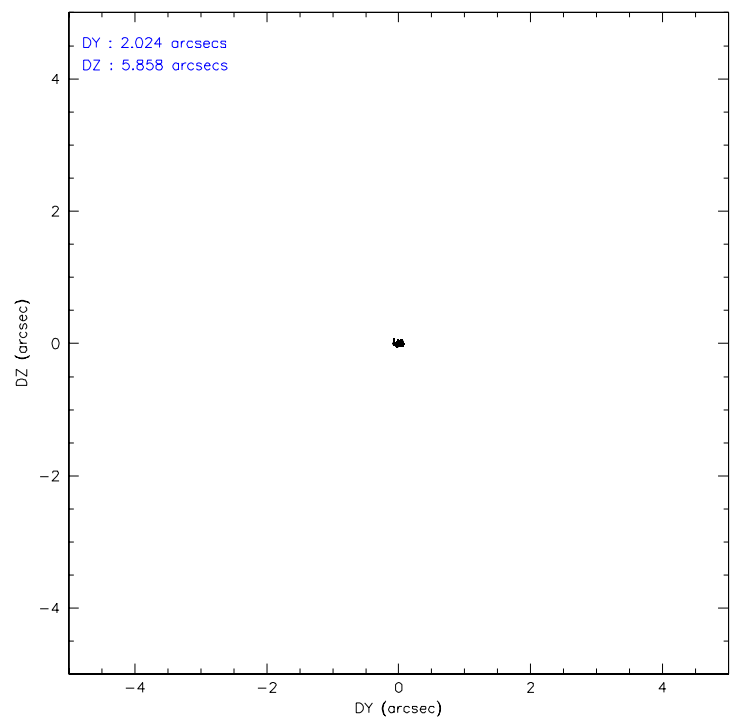
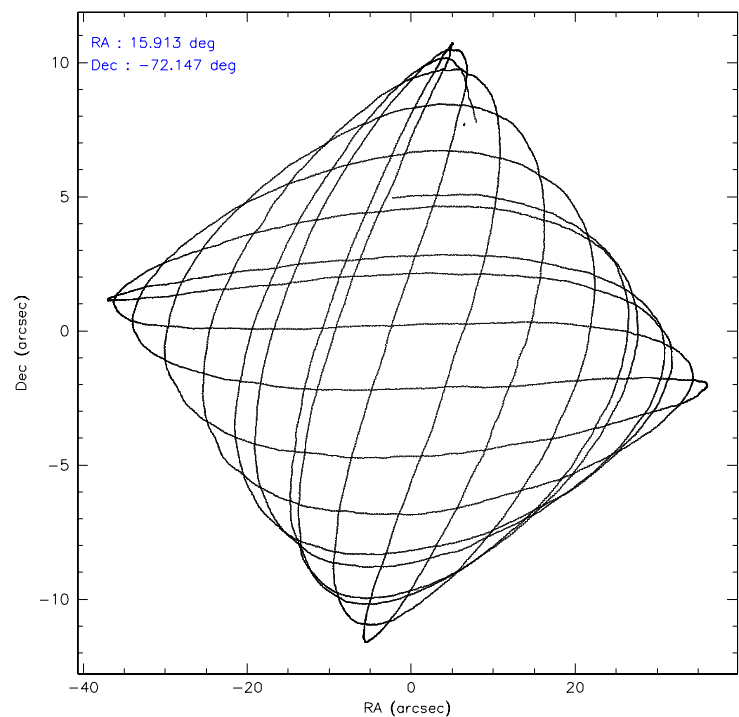
	ccd 0	ccd 1	ccd 2	ccd 3	ccd 6	ccd 7
level 1 events	71866	46850	50162	51117	51148	61637
rejected events	40316	40223	44077	45265	44232	37696
rejected %	56%	85%	87%	88%	86%	61%

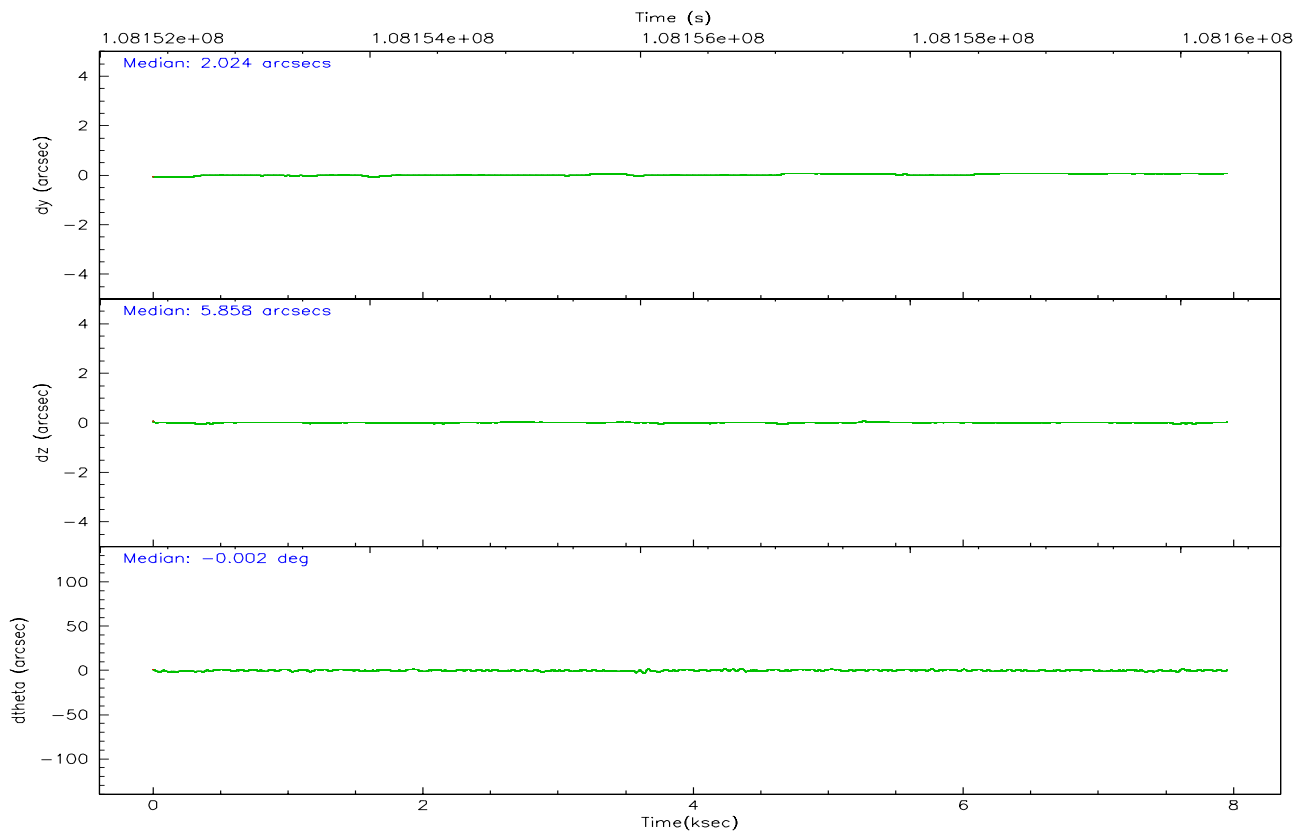
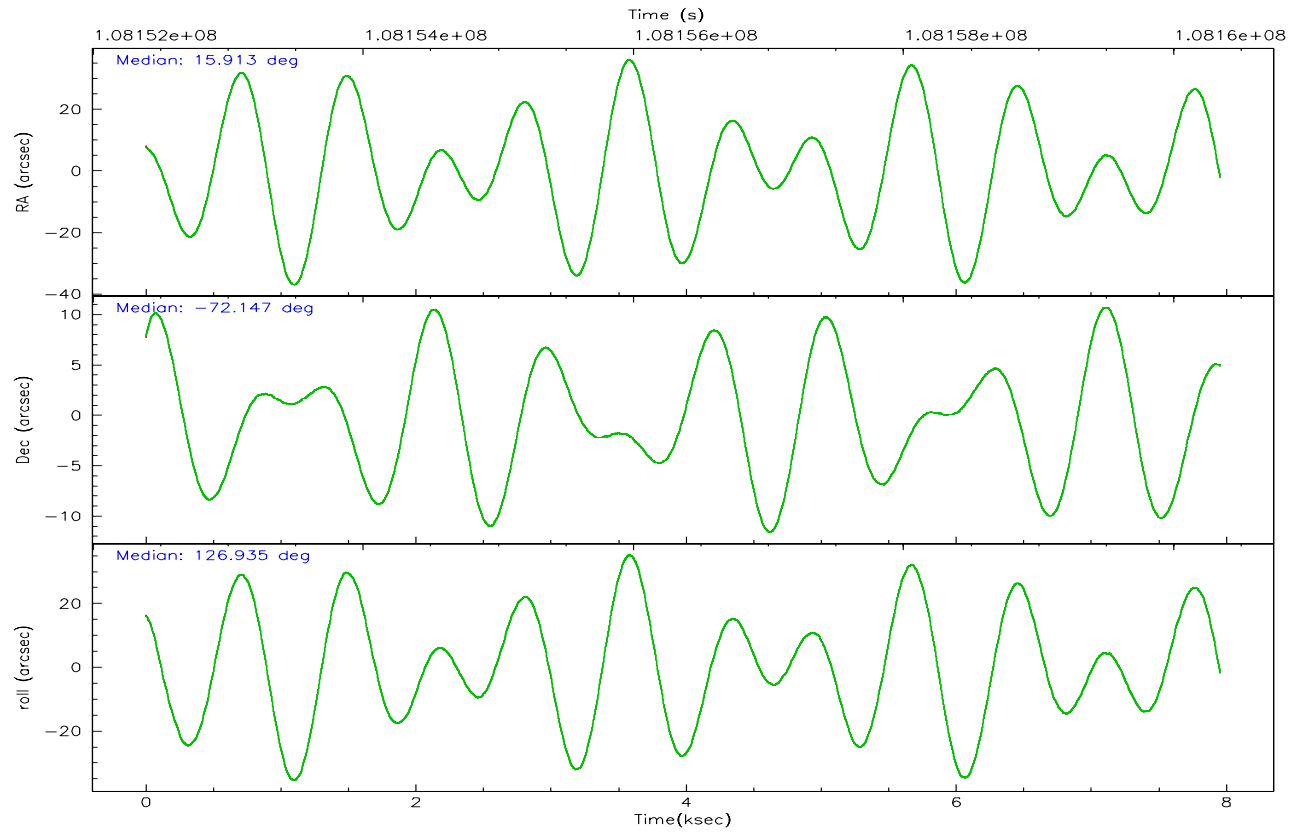
	ccd 0	ccd 1	ccd 2	ccd 3	ccd 6	ccd 7
grade 0 events	25133	2972	2853	2567	3332	1520
	34%	6%	5%	5%	6%	2%
grade 1 events	203	26	25	21	23	38
	0%	0%	0%	0%	0%	0%
grade 2 events	3176	1299	1262	1174	1257	5923
	4%	2%	2%	2%	2%	9%
grade 3 events	1029	626	507	530	562	1262
	1%	1%	1%	1%	1%	2%
grade 4 events	1037	604	497	572	547	1279
	1%	1%	0%	1%	1%	2%
grade 5 events	1854	1881	1665	1927	2102	4218
	2%	4%	3%	3%	4%	6%
grade 6 events	1204	1129	971	1012	1223	13976
	1%	2%	1%	1%	2%	22%
grade 7 events	38230	38313	42382	43314	42102	33421
	53%	81%	84%	84%	82%	54%

## 2.2 Compared Parameters

Parameter	Planned	Actual	Parameter	Planned	Actual
Instrument	ACIS	ACIS	Obspar format version number	6	6
Detector	ACIS-012367	ACIS-012367	Obspar file type	PREDICTED	ACTUAL
Grating	NONE	NONE	Obspar update status	NONE	UPDATED
Data mode	FAINT	FAINT	Number of optional ACIS chips dropped	0	0
Observation mode	POINTING	POINTING	On-chip summing requested	N	N
Pointing RA	15.994688	15.91233972666158	Subarray requested	NONE	NONE
Pointing Dec	-72.157534	-72.1468354956227	Alternating exposures requested	N	N
Pointing Roll	126.814023	126.9443209966855	Primary exposure time	0.000000	3.2
Window start time	107740864.184000	107740864.184000			
Window stop time	110246464.184000	110246464.184000			
SIM focus pos (mm)	-0.782348	-0.7809083437167272			
SIM defocus (mm)	0	0.001439871863259334			
SIM translation stage pos (mm)	-233.592463	-233.5874344608287			
SIM translation stage offset (mm)	0	-0.005018542100998502			
Observation start time	108152591.184000	108152121.83413			
Observation start date	2001-06-05T18:22:07	2001-06-05T18:15:21			
Observation end time	108160346.184000	108160480.19696			
Observation end date	2001-06-05T20:31:22	2001-06-05T20:34:40			
Read mode	TIMED	TIMED			

## 2.3 Aspect





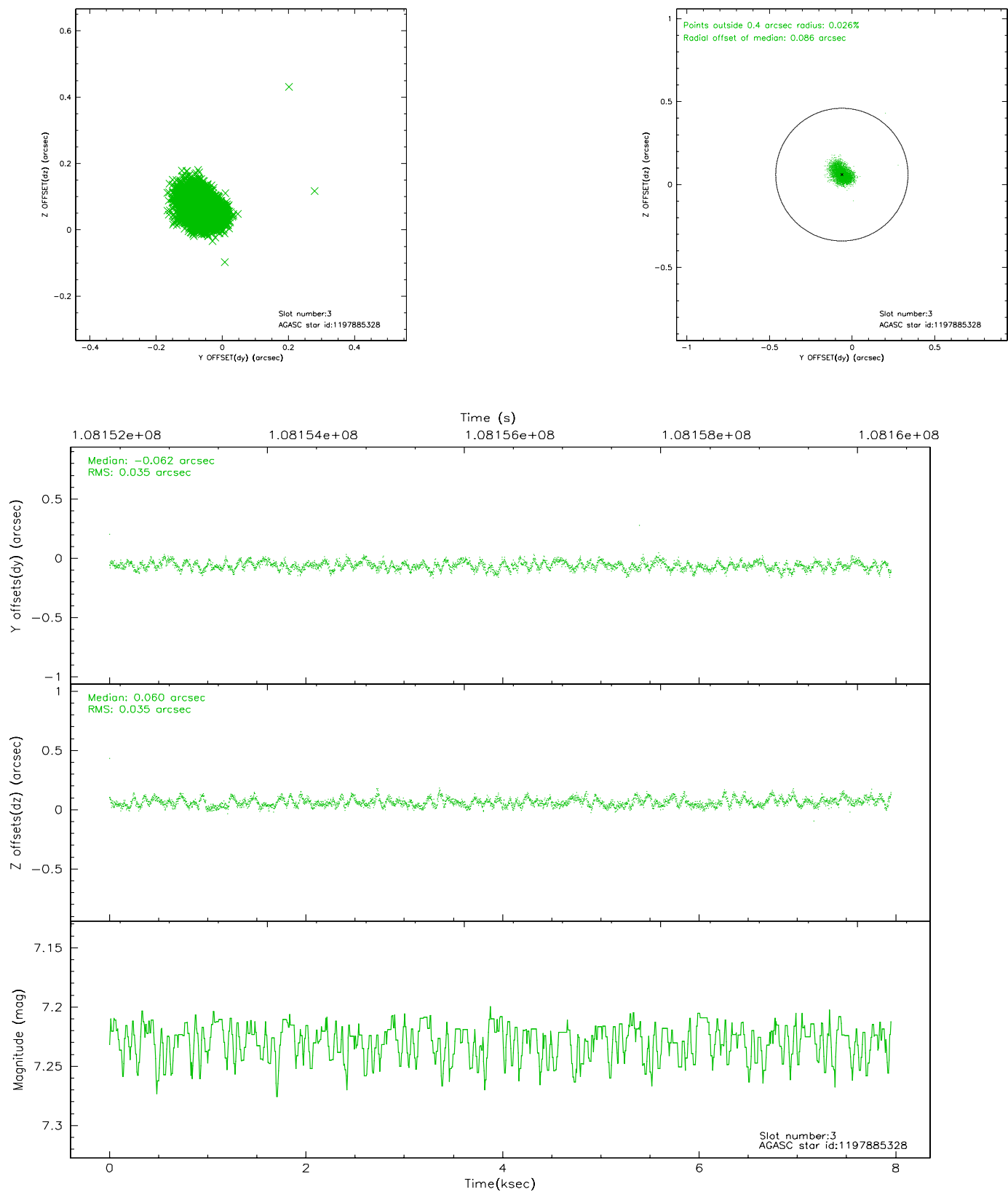
### Slot Statistics

slot	status	id	mag	n_pts	med_dy	med_dz	dr1	dr2	ra	dec	mean_y	mean_z
0	FID	ACIS-I-2	7.15	1939	-0.026	-0.040	0.010	0.018	0.000000	0.000000	-756.41	-835.63
1	FID	ACIS-I-4	7.18	1940	-0.052	0.035	0.008	0.015	0.000000	0.000000	2157.29	1070.28
2	FID	ACIS-I-5	7.23	1941	-0.021	0.074	0.010	0.017	0.000000	0.000000	-1809.33	1068.95
3	GUIDE	1197885328	7.23	3881	-0.062	0.060	0.053	0.082	16.283090	-71.733943	1026.38	-1173.22
4	GUIDE	1198189696	7.36	3881	0.099	-0.153	0.049	0.080	15.223750	-72.697522	-1064.88	1828.76
5	GUIDE	1197750936	7.58	3880	-0.180	0.112	0.054	0.089	15.387940	-71.549550	2164.40	-754.53
6	GUIDE	1197884536	8.49	3880	-0.014	0.043	0.061	0.099	17.160729	-71.835289	136.37	-1734.77
7	GUIDE	1197749664	9.57	3879	0.155	-0.064	0.093	0.151	15.809015	-72.366369	-479.67	612.71

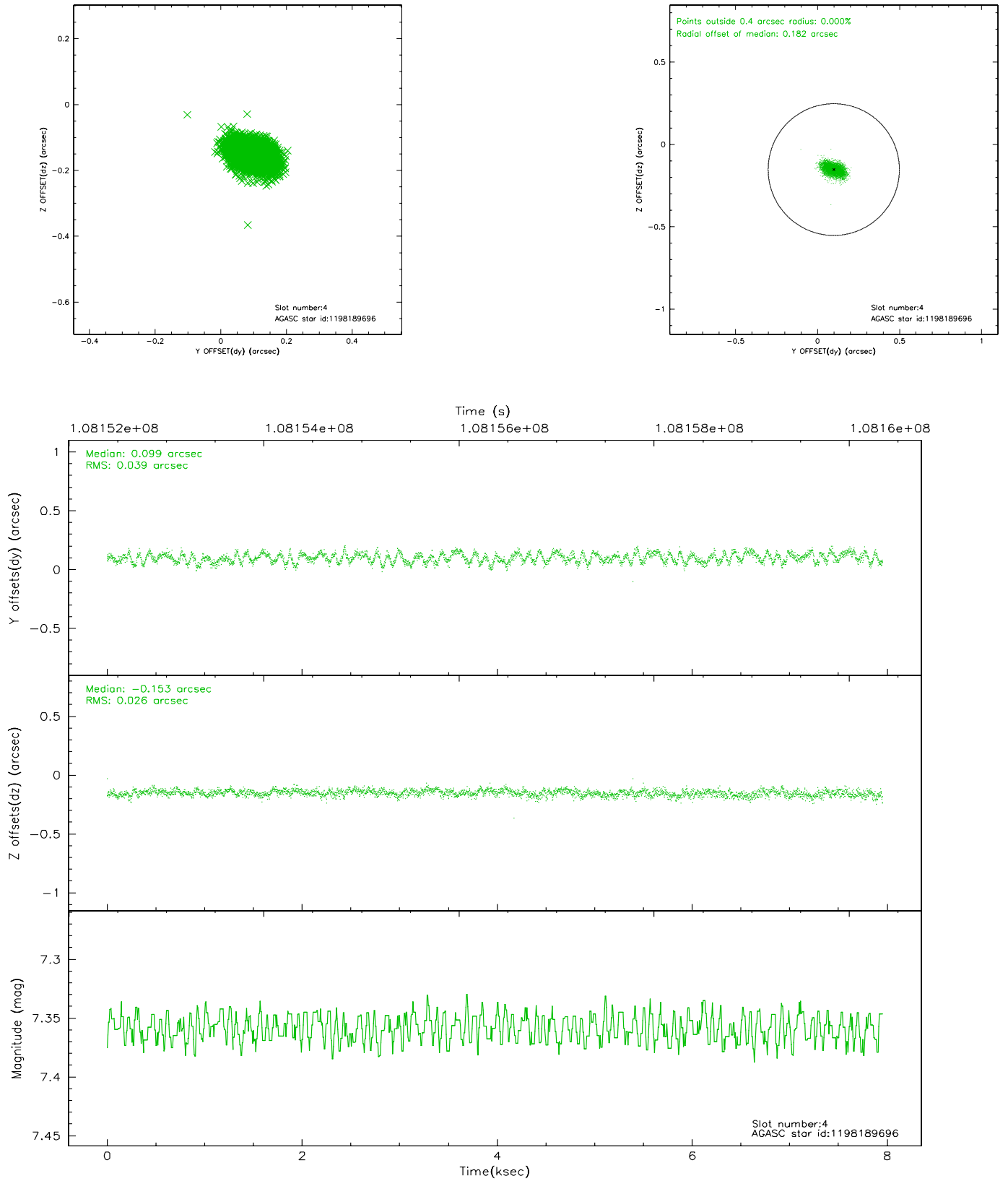


## 2.4 Star Slots

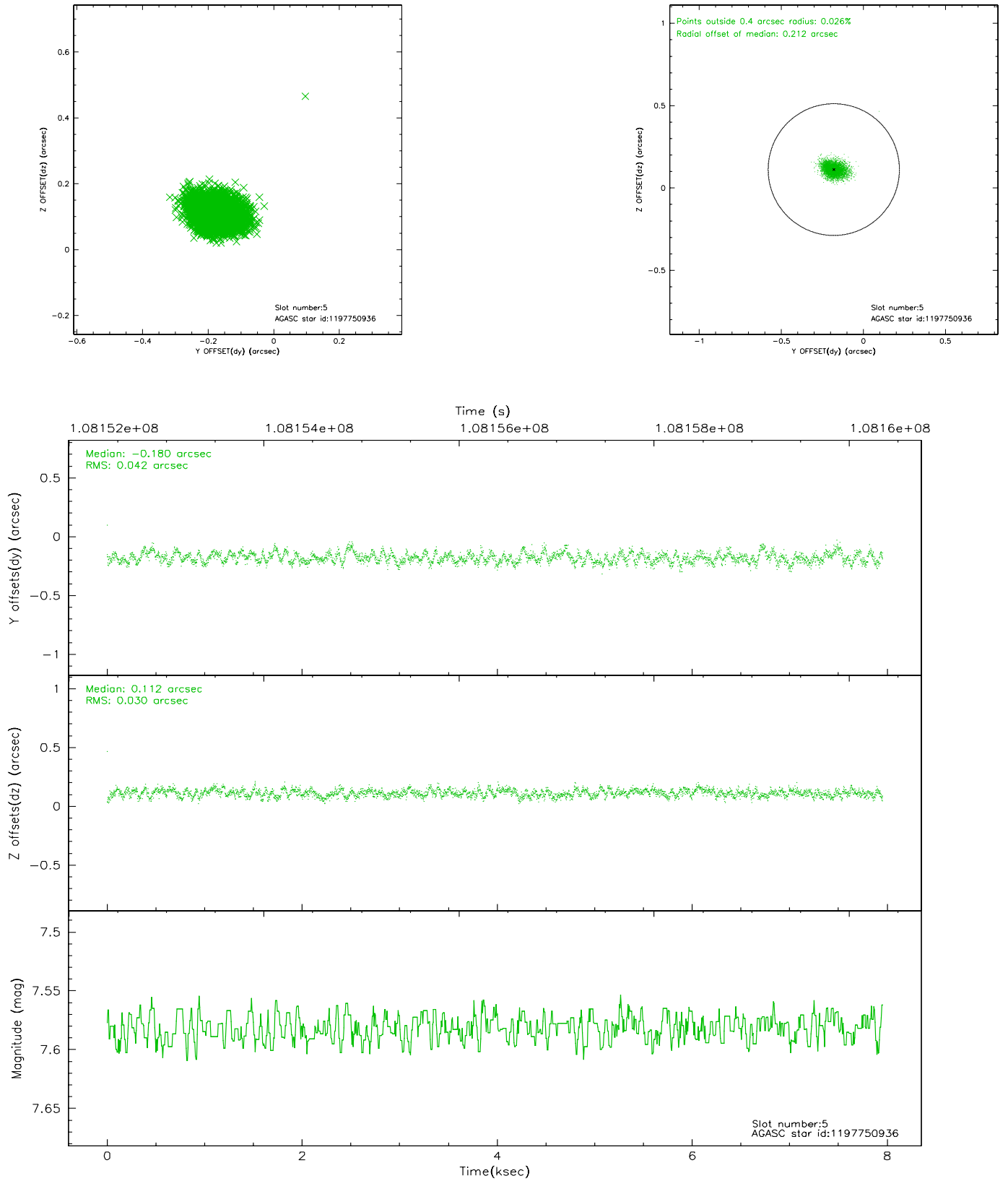
### 2.4.1 Slot 3



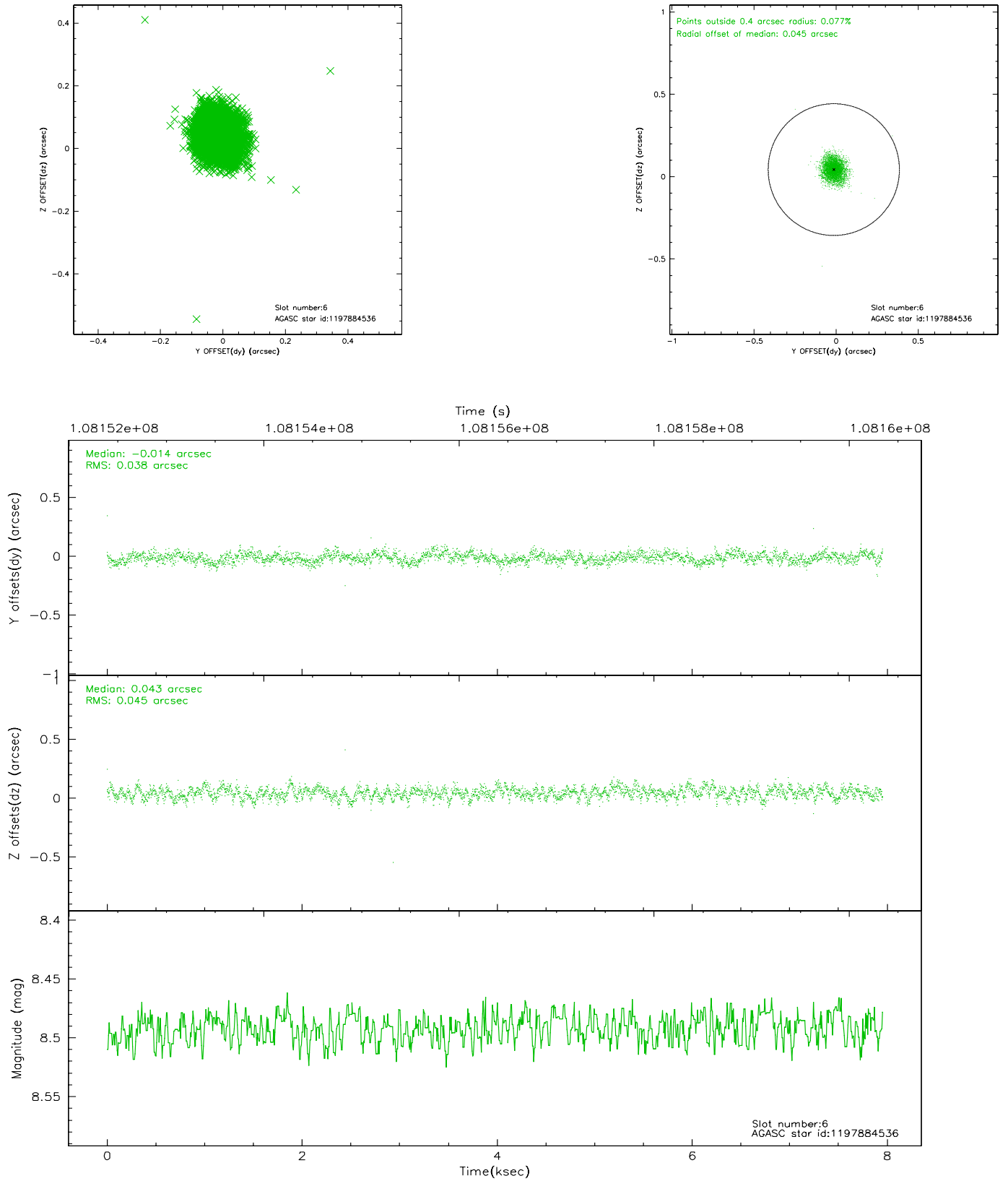
## 2.4.2 Slot 4



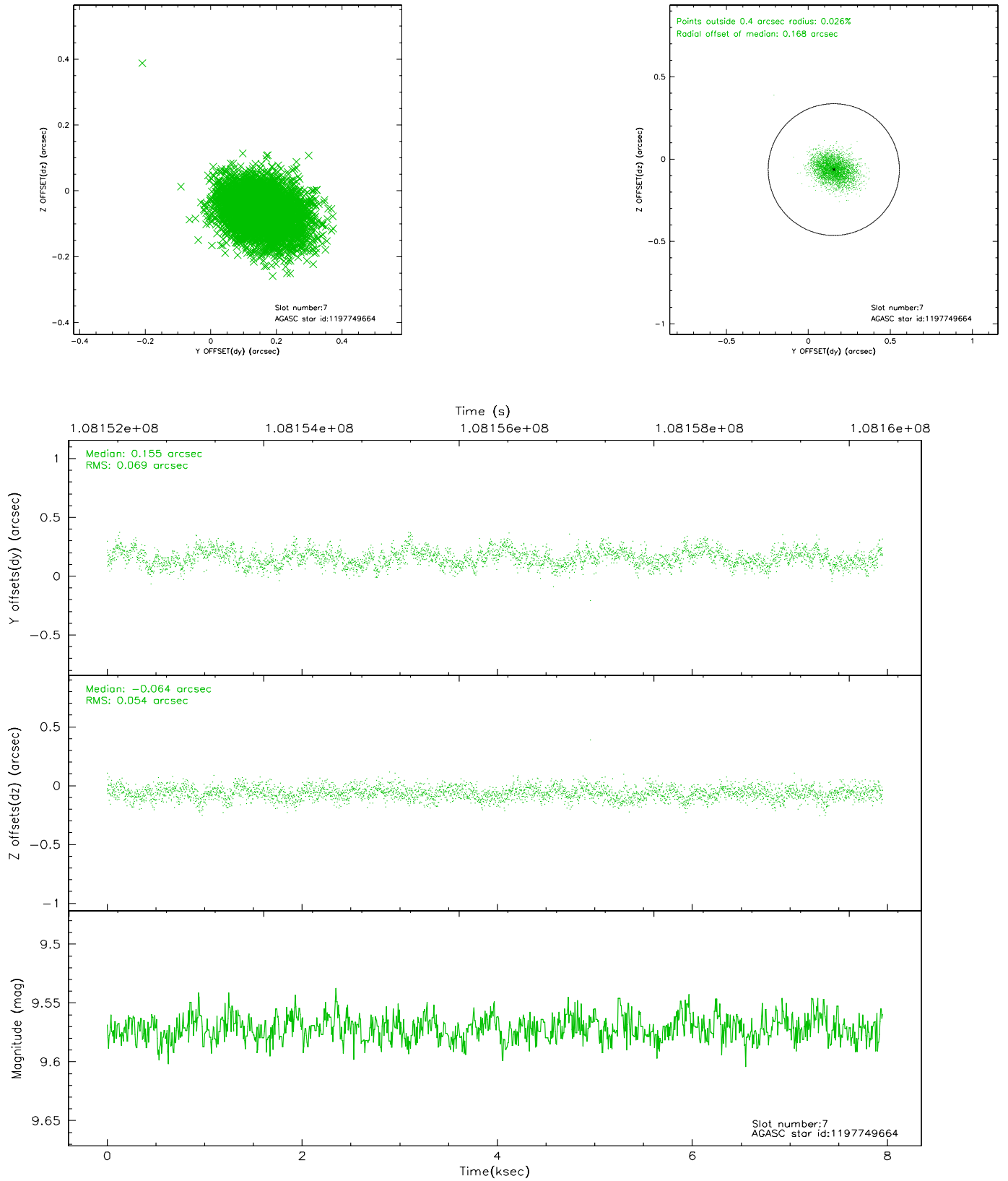
### 2.4.3 Slot 5



## 2.4.4 Slot 6

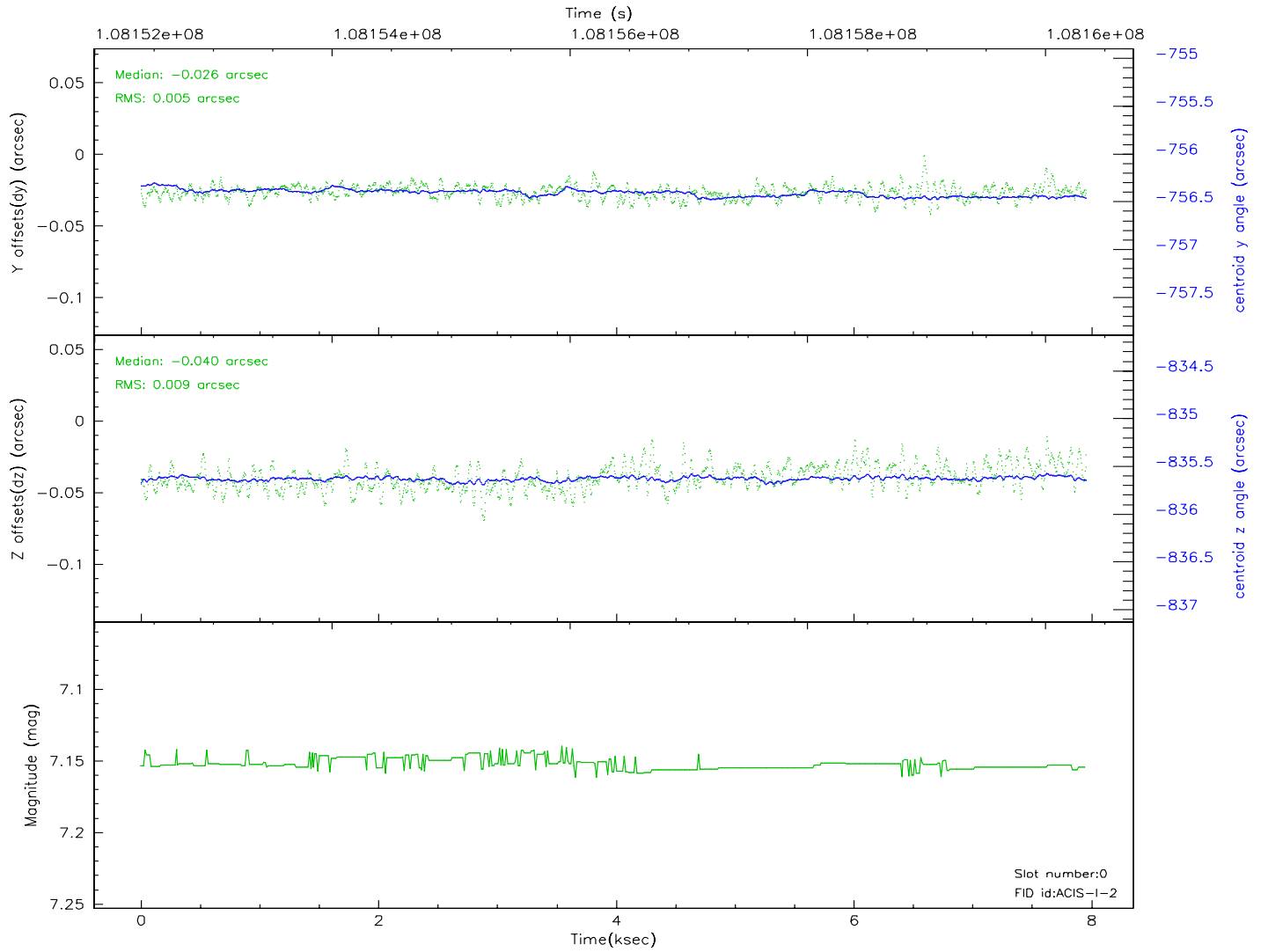
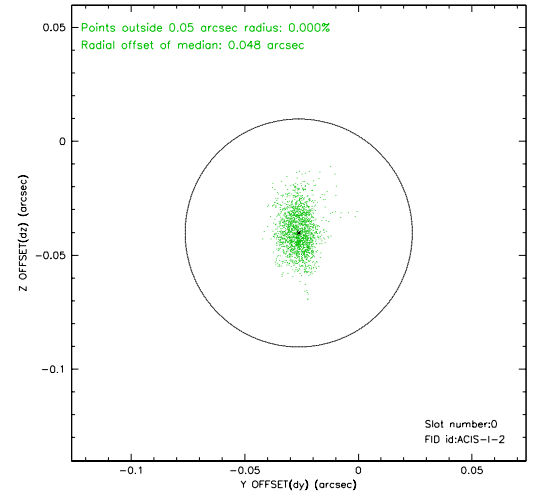
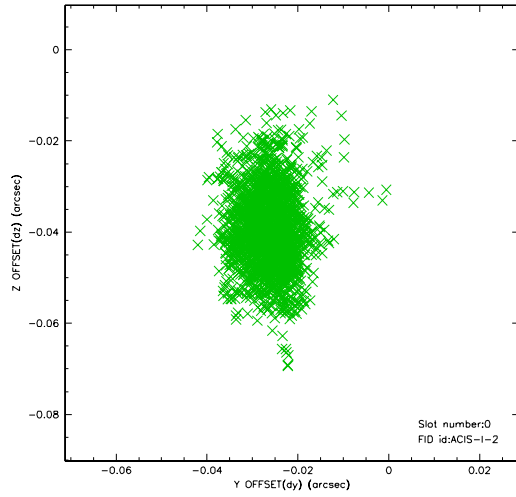


## 2.4.5 Slot 7

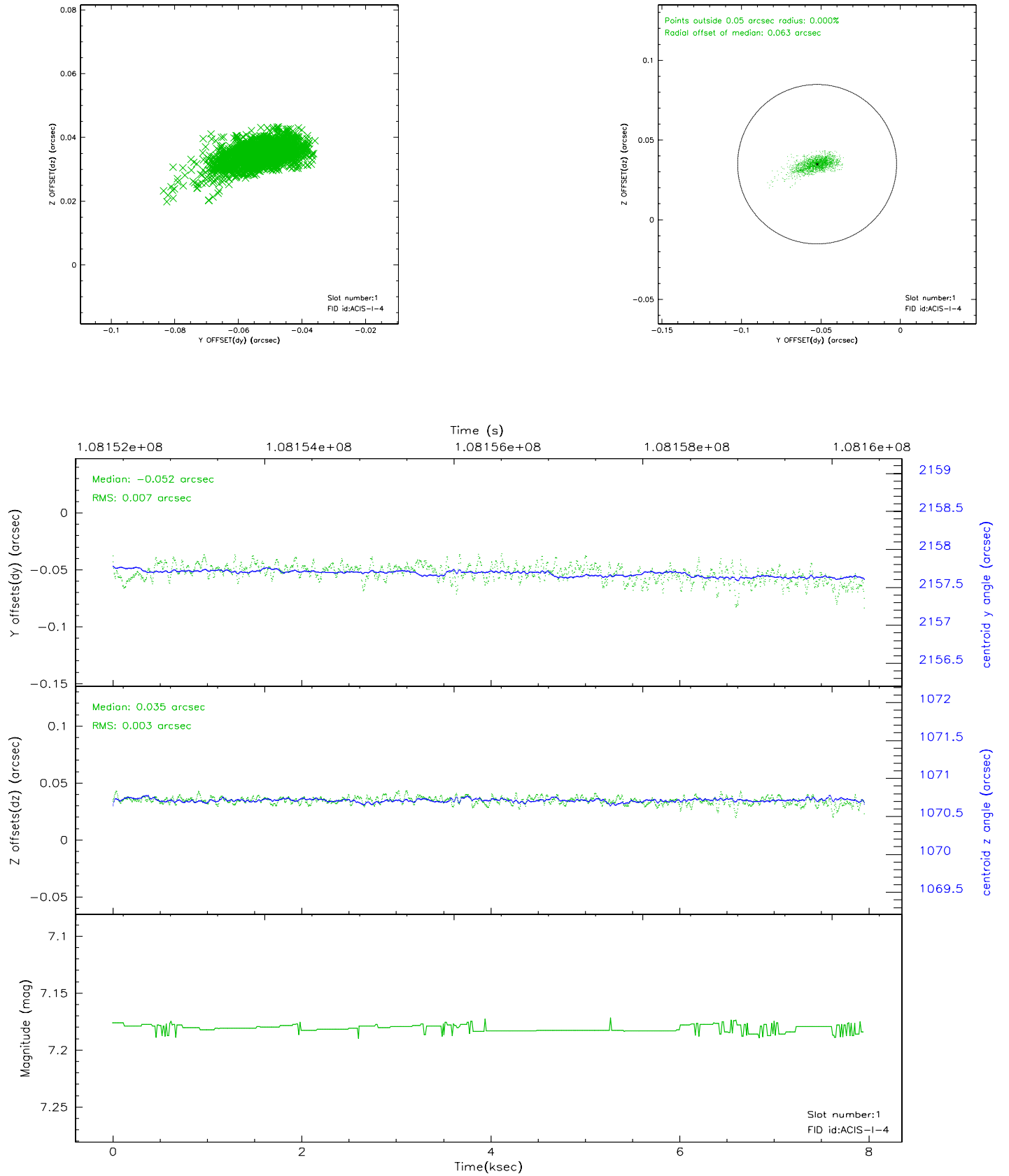


## 2.5 FID Slots

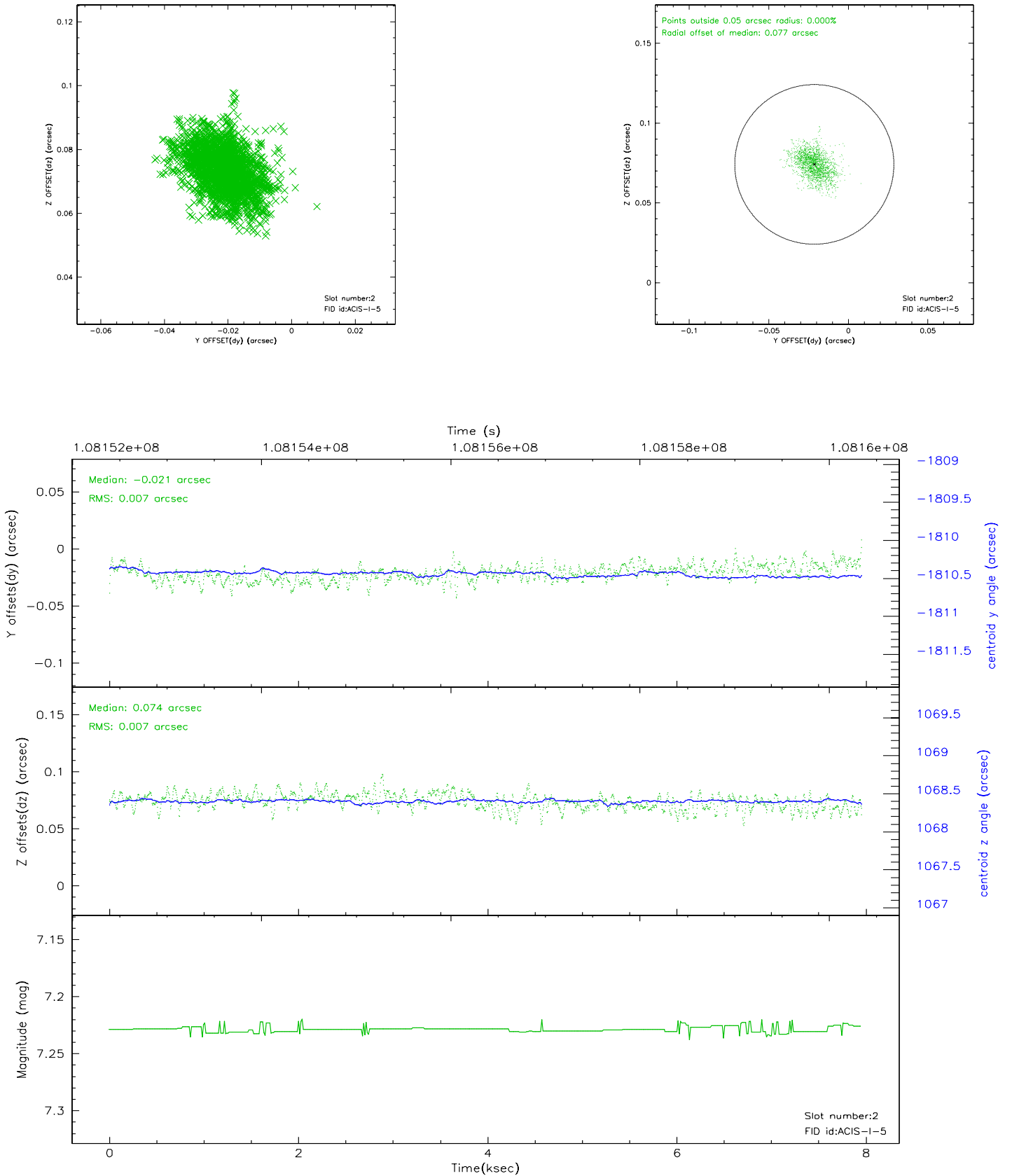
### 2.5.1 Slot 0



## 2.5.2 Slot 1

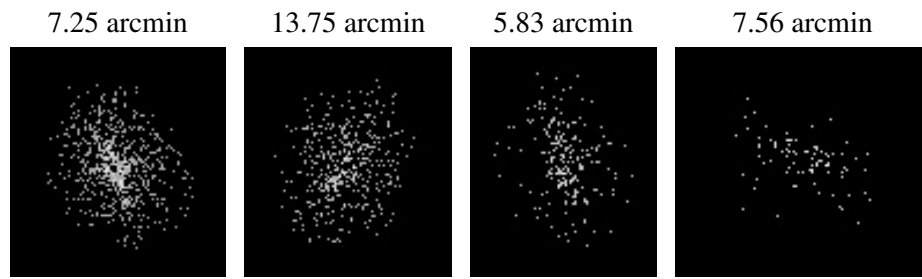


### 2.5.3 Slot 2





### 3 Point Sources



## A Summary

### A.1 Status

V&V Scientist	Beth Sundheim
V&V Date (YYYY-MM-DD)	2006.11.27
V&V Edition	1
V&V Disposition and Status	OK
V&V Charge Time	7.516

### A.2 Comments

Window constraint OK.