

V&V Reference Report

L2 ASCDS Version : 7.6.9

Observation 1539 - L2 Version 001
Chandra X-Ray Center

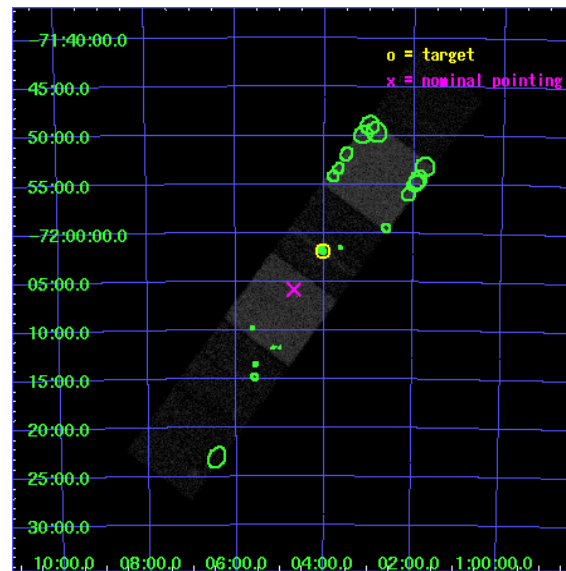
L2 Processing Date : Nov 27 2006

Contents

1	Front	2
2	OBI	3
2.1	OBI	3
2.1.1	Images	3
2.1.2	Bias	3
2.1.3	Parameters	4
2.1.4	Events	4
2.2	Compared Parameters	5
2.3	Aspect	6
2.4	Star Slots	9
2.4.1	Slot 3	9
2.4.2	Slot 4	10
2.4.3	Slot 5	11
2.4.4	Slot 6	12
2.4.5	Slot 7	13
2.5	FID Slots	14
2.5.1	Slot 0	14
2.5.2	Slot 1	15
2.5.3	Slot 2	16
3	Point Sources	17
A	Summary	18
A.1	Status	18
A.2	Comments	18

1 Front

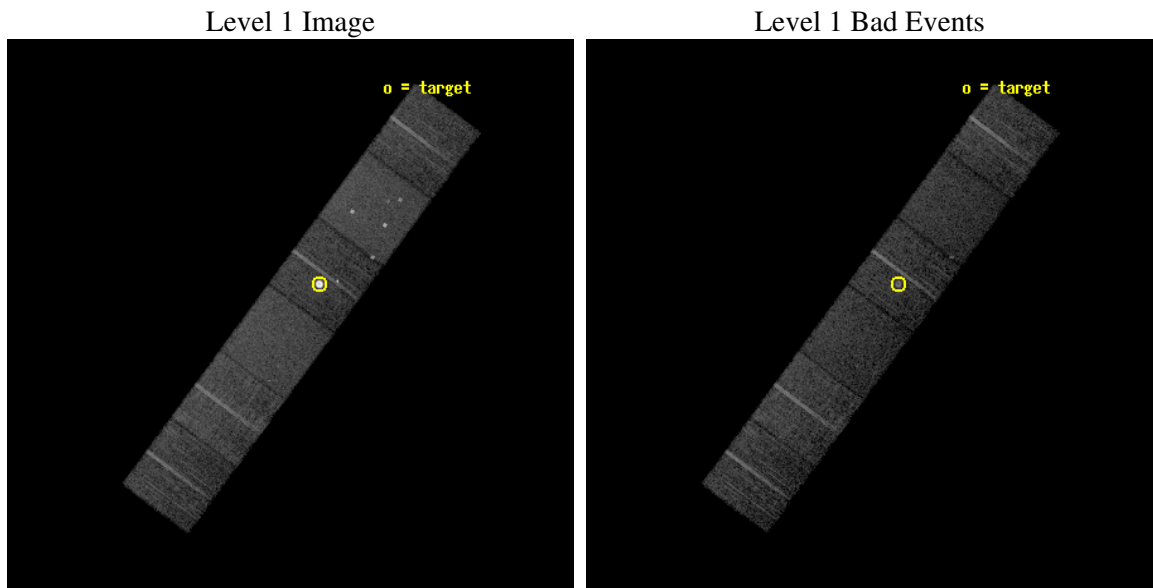
seq_num	590148
obs_id	1539
title	ACIS CALIBRATION OBSERVATION OF THE SUPERNOVA REMNANT E0102-72 (JUNE 2001)
observer	Dr. CXC Calibration
object	E0102-72.3 [Chip S2, T=120, Offsets=5,0,0]
dtcycle	0
cycle	P
ra_targ	16.01
dec_targ	-72.032028
ra_nom	16.171463104712
dec_nom	-72.096917991543
roll_nom	126.48258514631
revision	2
ontime	7510.4000069946
livetime	7415.2987998861
ontime4	7510.4000069946
ontime5	7510.4000069946
ontime6	7510.4000069946
ontime7	7510.4000069946
ontime8	7510.4000069946
ontime9	7510.4000069946
l2events	105769



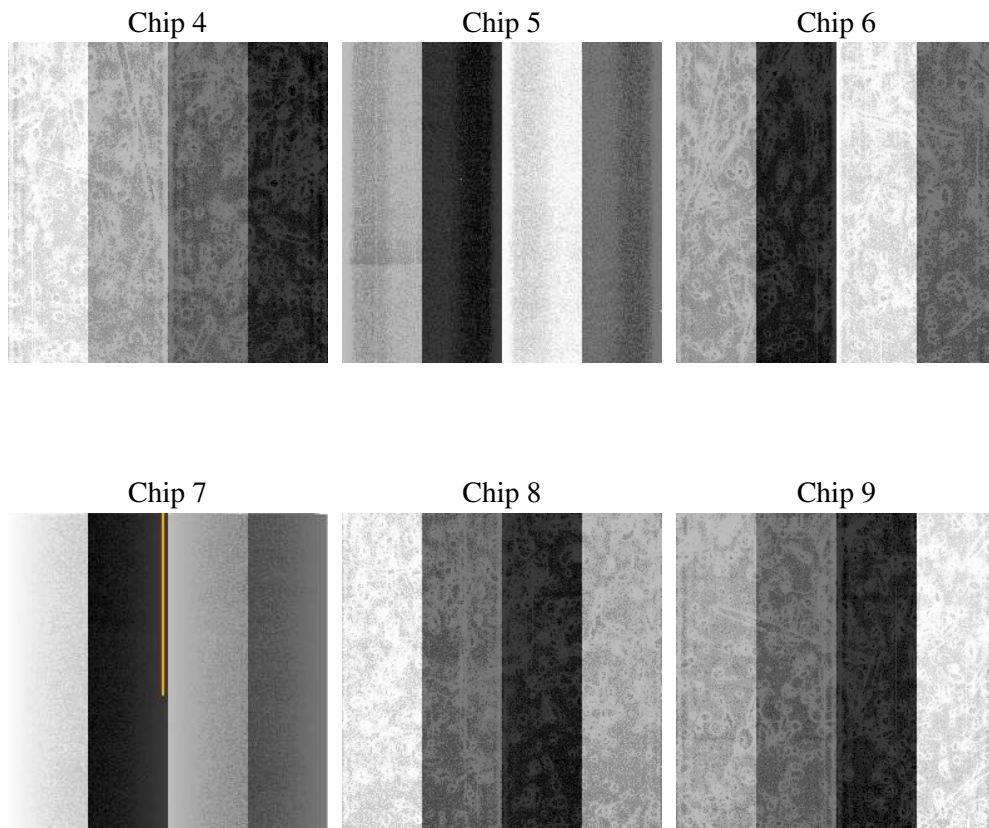
2 OBI

2.1 OBI

2.1.1 Images



2.1.2 Bias



2.1.3 Parameters

obi_num	0
ascdsver	7.6.9
caldbver	3.2.4
date	2006-11-28T03:08:48
revision	2

sched_exp_time	7755.000000
ontime	7515.876522541
ontime4	7512.6355323792
ontime5	7512.6355323792
ontime6	7515.876522541
ontime7	7512.6355323792
ontime8	7515.8764128536
ontime9	7515.876522541
l1events	391564

2.1.4 Events

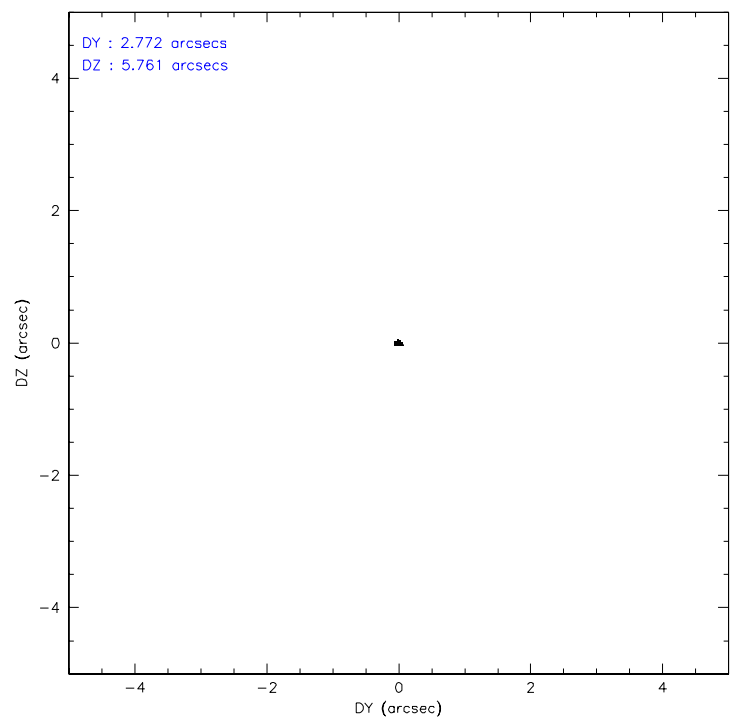
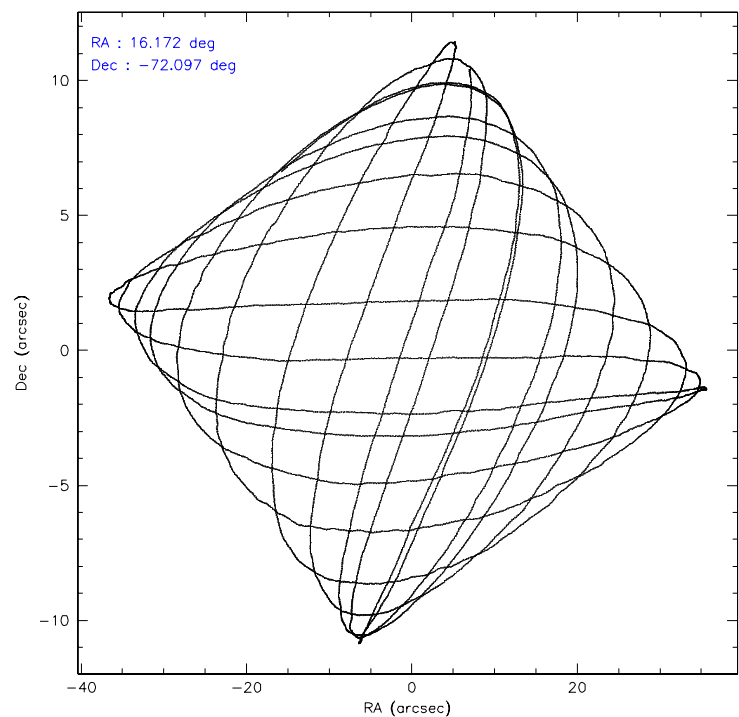
	ccd 4	ccd 5	ccd 6	ccd 7	ccd 8	ccd 9
level 1 events	55058	71400	82793	64160	68476	49677
rejected events	49153	38061	44068	38508	55103	43735
rejected %	89%	53%	53%	60%	80%	88%

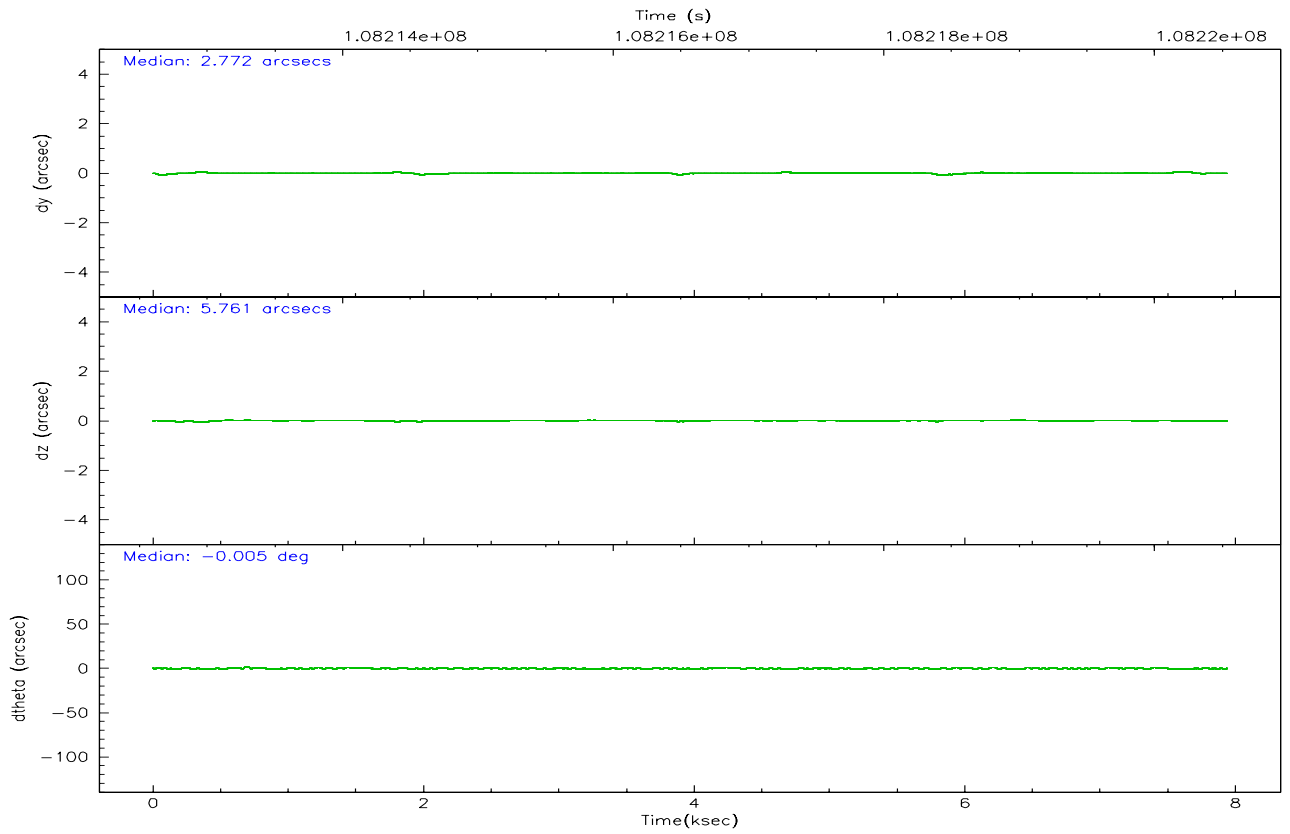
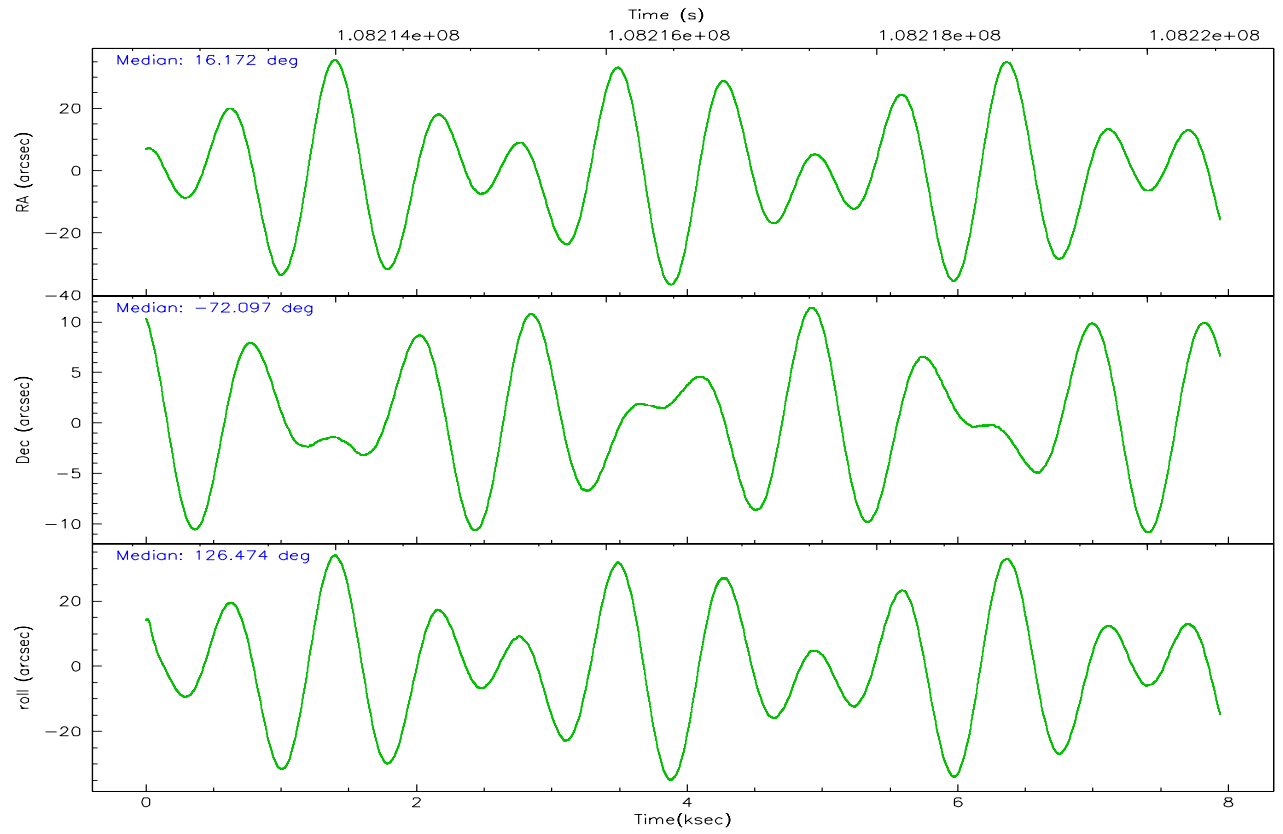
	ccd 4	ccd 5	ccd 6	ccd 7	ccd 8	ccd 9
grade 0 events	2436	5494	31508	1953	4262	2455
	4%	7%	38%	3%	6%	4%
grade 1 events	36	146	299	30	58	31
	0%	0%	0%	0%	0%	0%
grade 2 events	1432	9381	3537	6578	2776	1284
	2%	13%	4%	10%	4%	2%
grade 3 events	548	756	1153	1495	1535	561
	0%	1%	1%	2%	2%	1%
grade 4 events	487	709	1136	1383	1387	525
	0%	0%	1%	2%	2%	1%
grade 5 events	1698	3500	2250	4292	2680	2046
	3%	4%	2%	6%	3%	4%
grade 6 events	1002	16999	1410	14243	3417	1117
	1%	23%	1%	22%	4%	2%
grade 7 events	47419	34415	41500	34186	52361	41658
	86%	48%	50%	53%	76%	83%

2.2 Compared Parameters

Parameter	Planned	Actual	Parameter	Planned	Actual
Instrument	ACIS	ACIS	Obspar format version number	6	6
Detector	ACIS-456789	ACIS-456789	Obspar file type	PREDICTED	ACTUAL
Grating	NONE	NONE	Obspar update status	NONE	UPDATED
Data mode	FAINT	FAINT	Number of optional ACIS chips dropped	0	0
Observation mode	POINTING	POINTING	On-chip summing requested	N	N
Pointing RA	16.253203	16.17146310471247	Subarray requested	NONE	NONE
Pointing Dec	-72.107530	-72.09691799154255	Alternating exposures requested	N	N
Pointing Roll	126.403736	126.4825851463115	Primary exposure time	0.000000	3.2
Window start time	107740864.184000	107740864.184000			
Window stop time	110246464.184000	110246464.184000			
SIM focus pos (mm)	-0.684267	-0.6828225247311905			
SIM defocus (mm)	0	0.001444936568705701			
SIM translation stage pos (mm)	-190.132523	-190.1425803651734			
SIM translation stage offset (mm)	0	0.01005778216563158			
Observation start time	108212786.184000	108212409.77398			
Observation start date	2001-06-06T11:05:22	2001-06-06T11:00:09			
Observation end time	108220541.184000	108220674.8618			
Observation end date	2001-06-06T13:14:37	2001-06-06T13:17:54			
Read mode	TIMED	TIMED			

2.3 Aspect



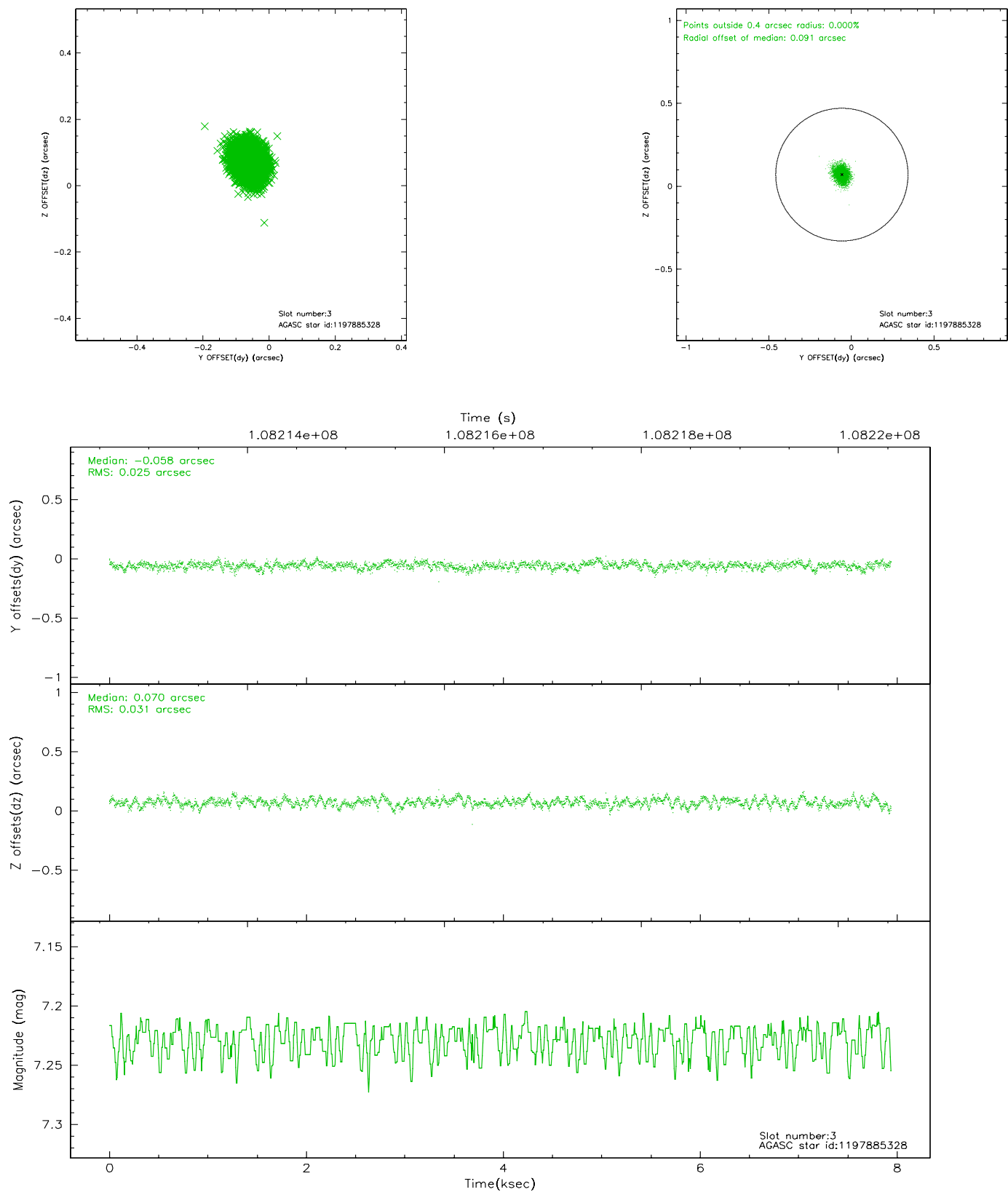


Slot Statistics

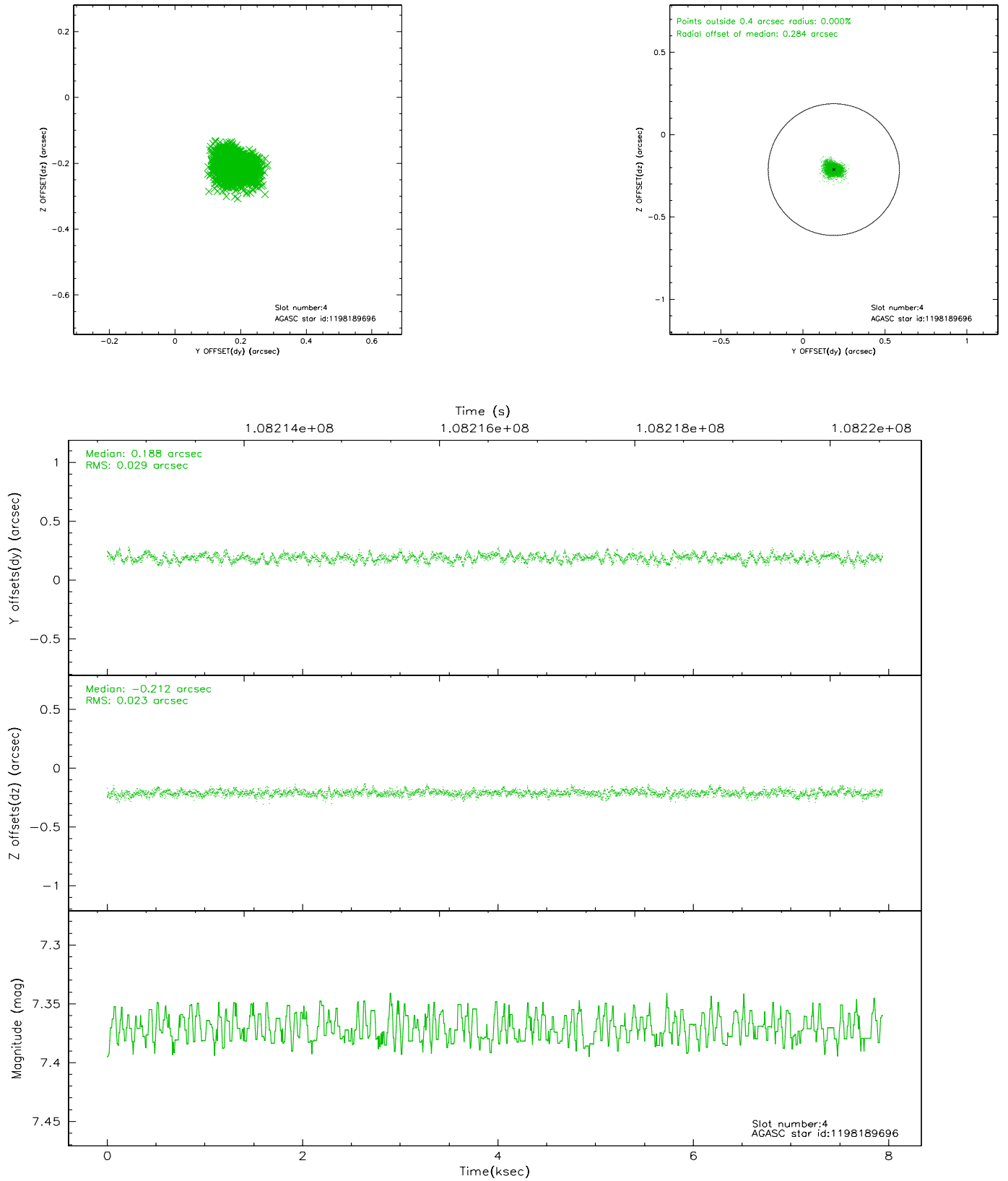
slot	status	id	mag	n_pts	med_dy	med_dz	dr1	dr2	ra	dec	mean_y	mean_z
0	FID	ACIS-S-2	7.11	1937	-0.011	0.039	0.006	0.010	0.000000	0.000000	-755.37	-1726.82
1	FID	ACIS-S-4	7.20	1937	-0.089	-0.005	0.005	0.009	0.000000	0.000000	2157.46	180.96
2	FID	ACIS-S-5	7.24	1937	0.070	-0.025	0.006	0.010	0.000000	0.000000	-1807.27	175.32
3	GUIDE	1197885328	7.23	3874	-0.058	0.070	0.043	0.069	16.283090	-71.733943	1063.01	-825.36
4	GUIDE	1198189696	7.37	3874	0.188	-0.212	0.039	0.066	15.223750	-72.697522	-1062.36	2152.53
5	GUIDE	1197750936	7.59	3874	-0.216	0.111	0.055	0.087	15.387940	-71.549550	2196.14	-393.59
6	GUIDE	1197884536	8.49	3874	0.001	0.072	0.057	0.091	17.160729	-71.835289	179.52	-1396.94
7	GUIDE	1197884712	8.30	3872	0.082	-0.042	0.050	0.080	16.087398	-72.252690	-312.24	456.15

2.4 Star Slots

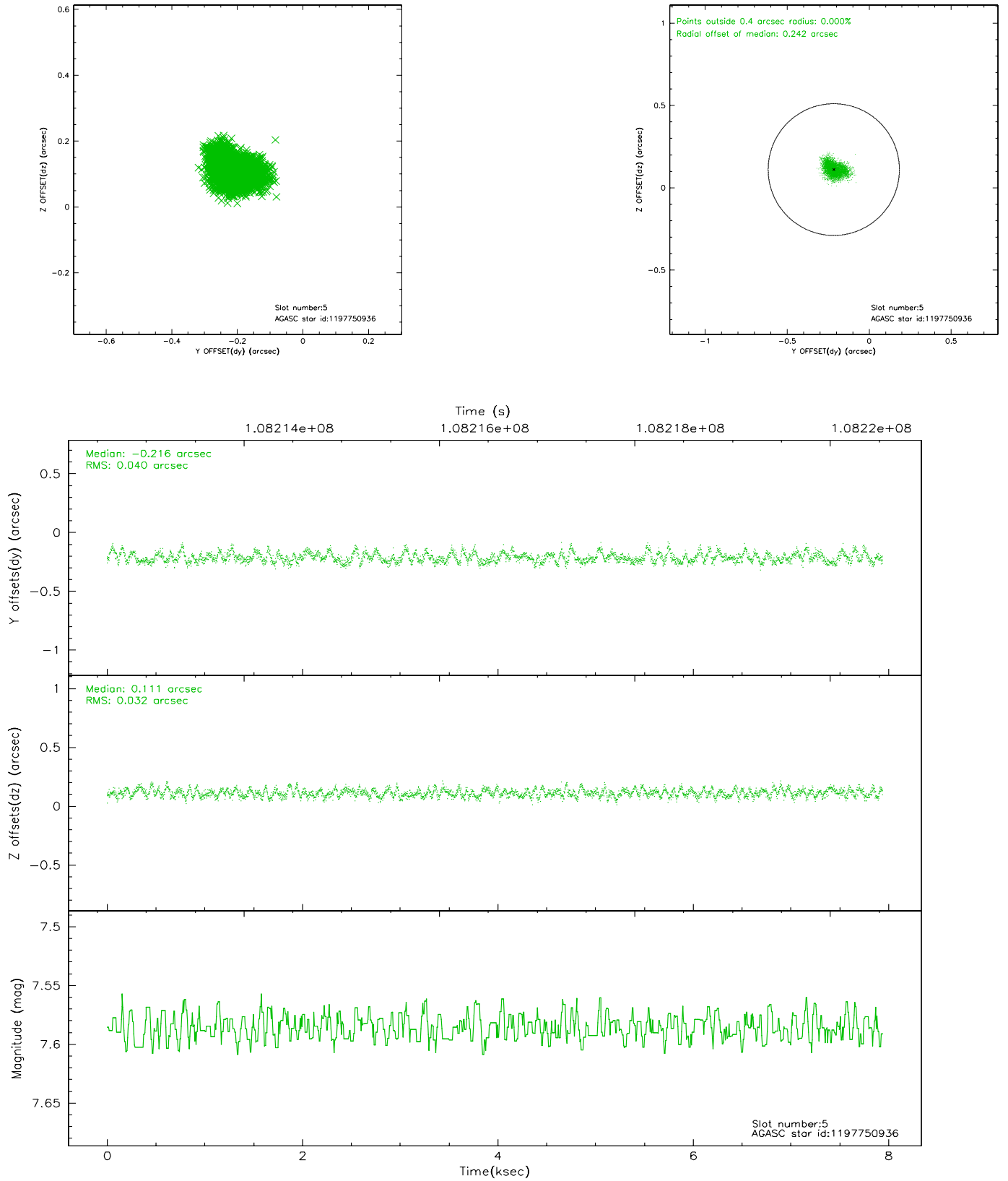
2.4.1 Slot 3



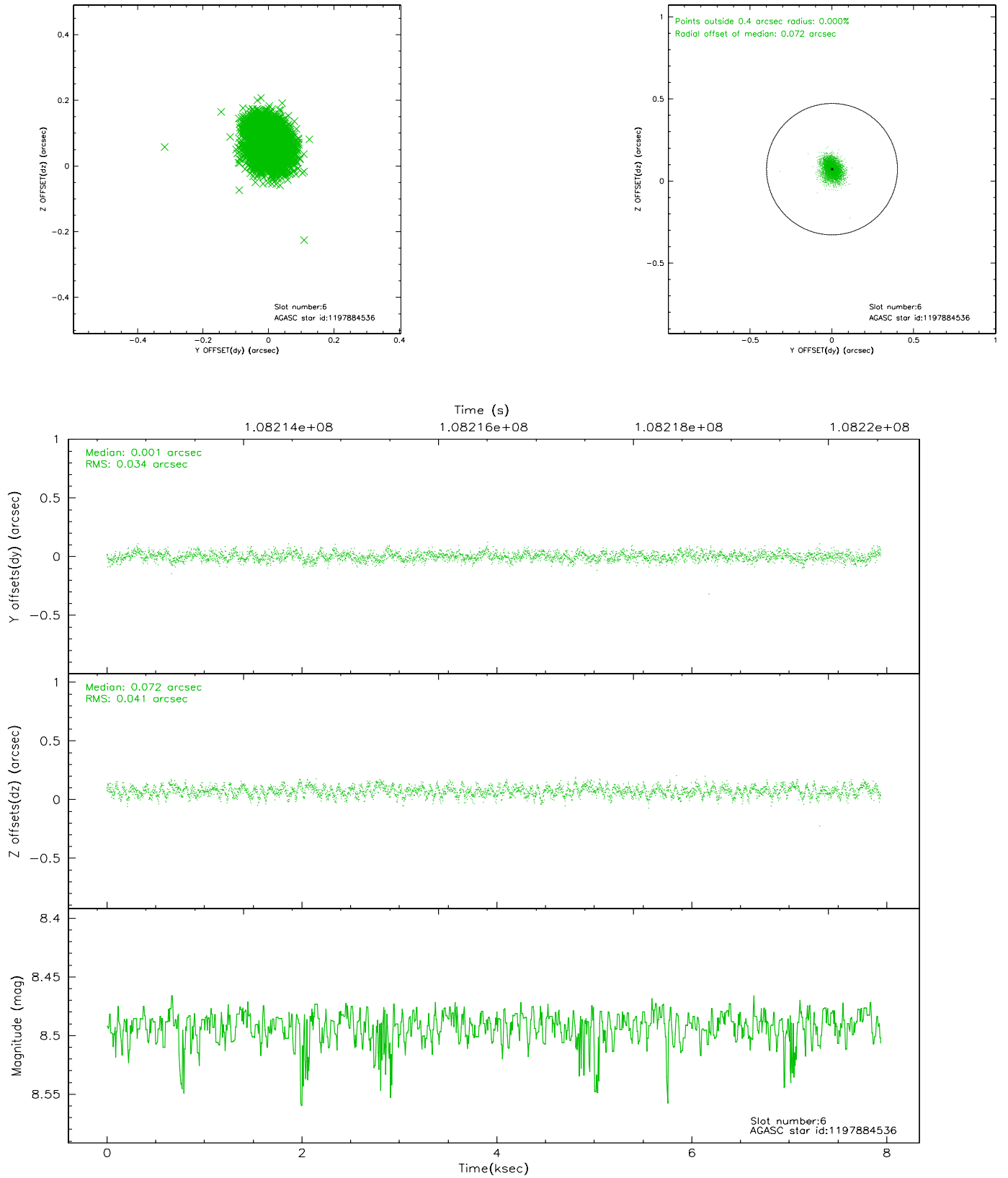
2.4.2 Slot 4



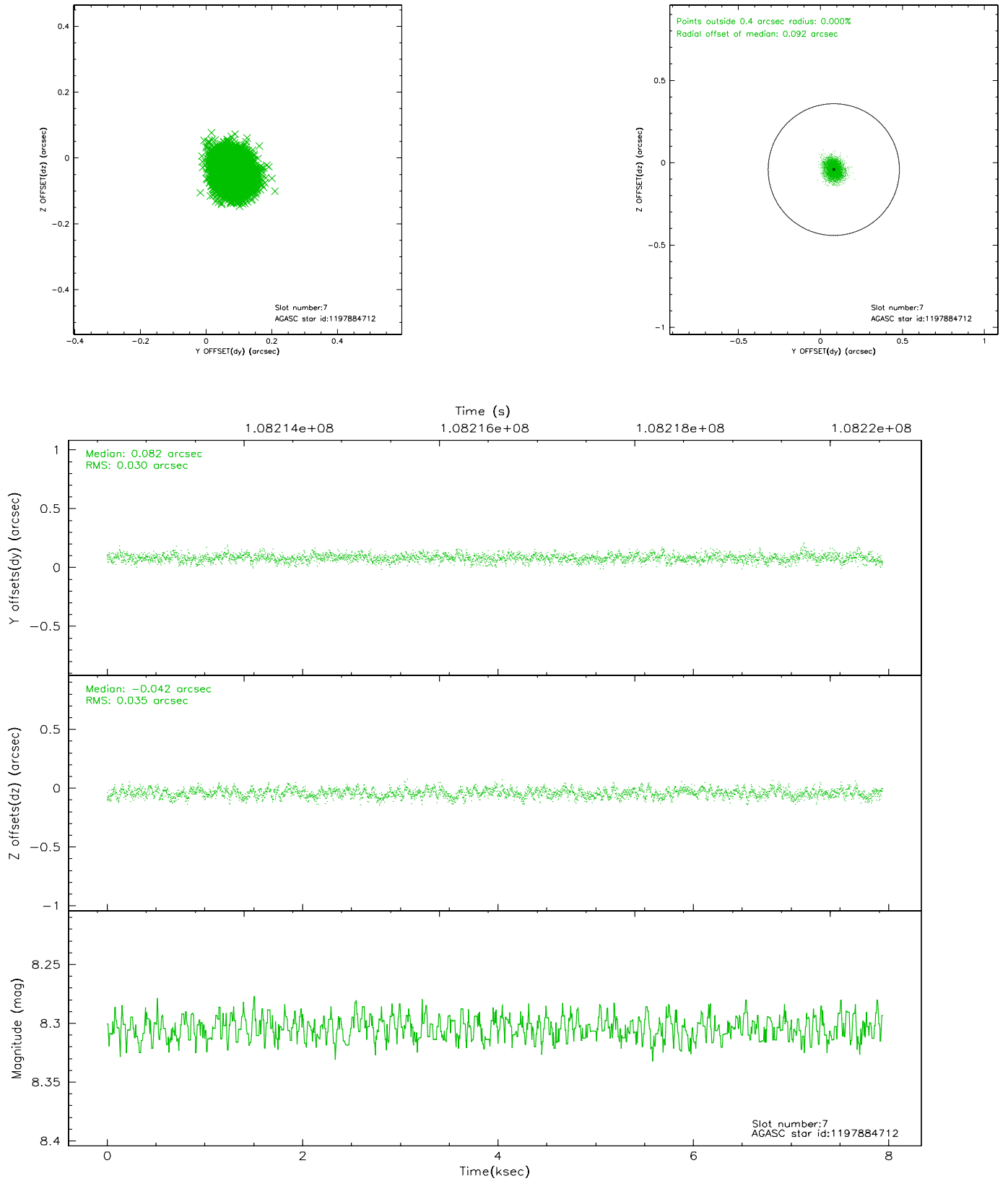
2.4.3 Slot 5



2.4.4 Slot 6

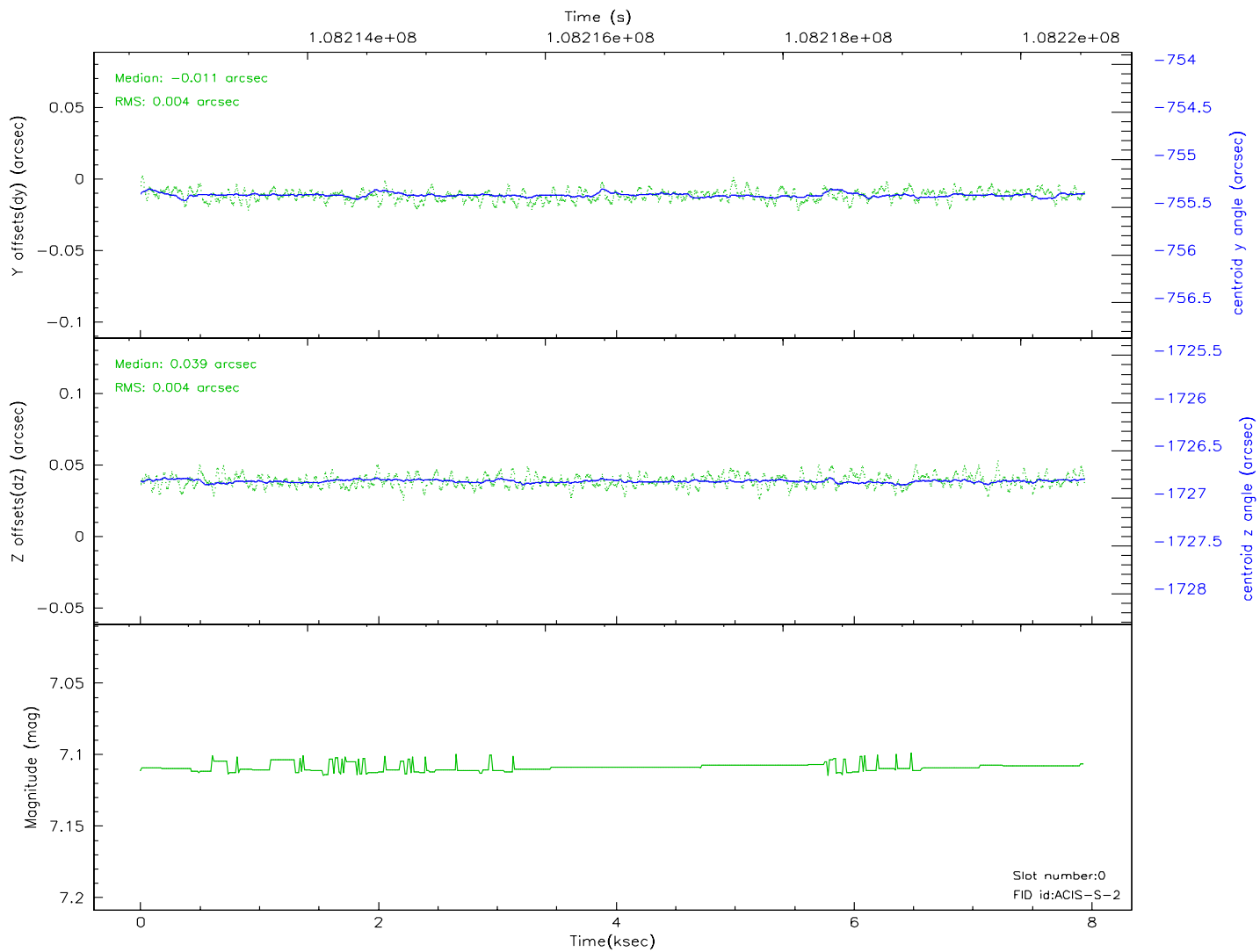
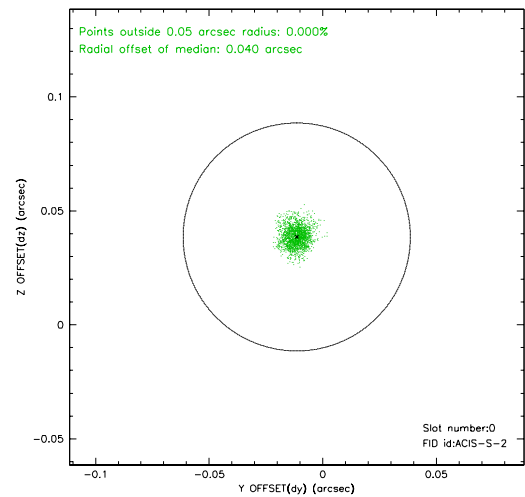
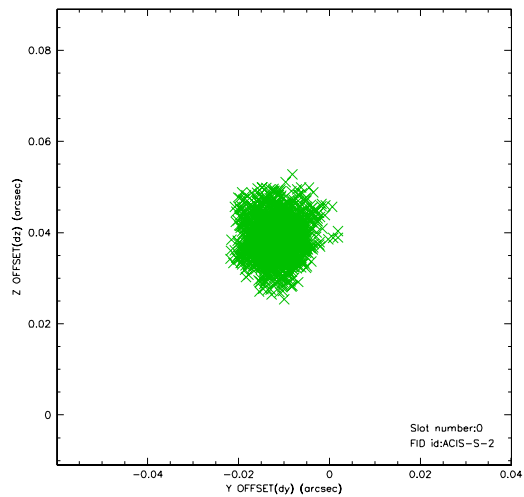


2.4.5 Slot 7

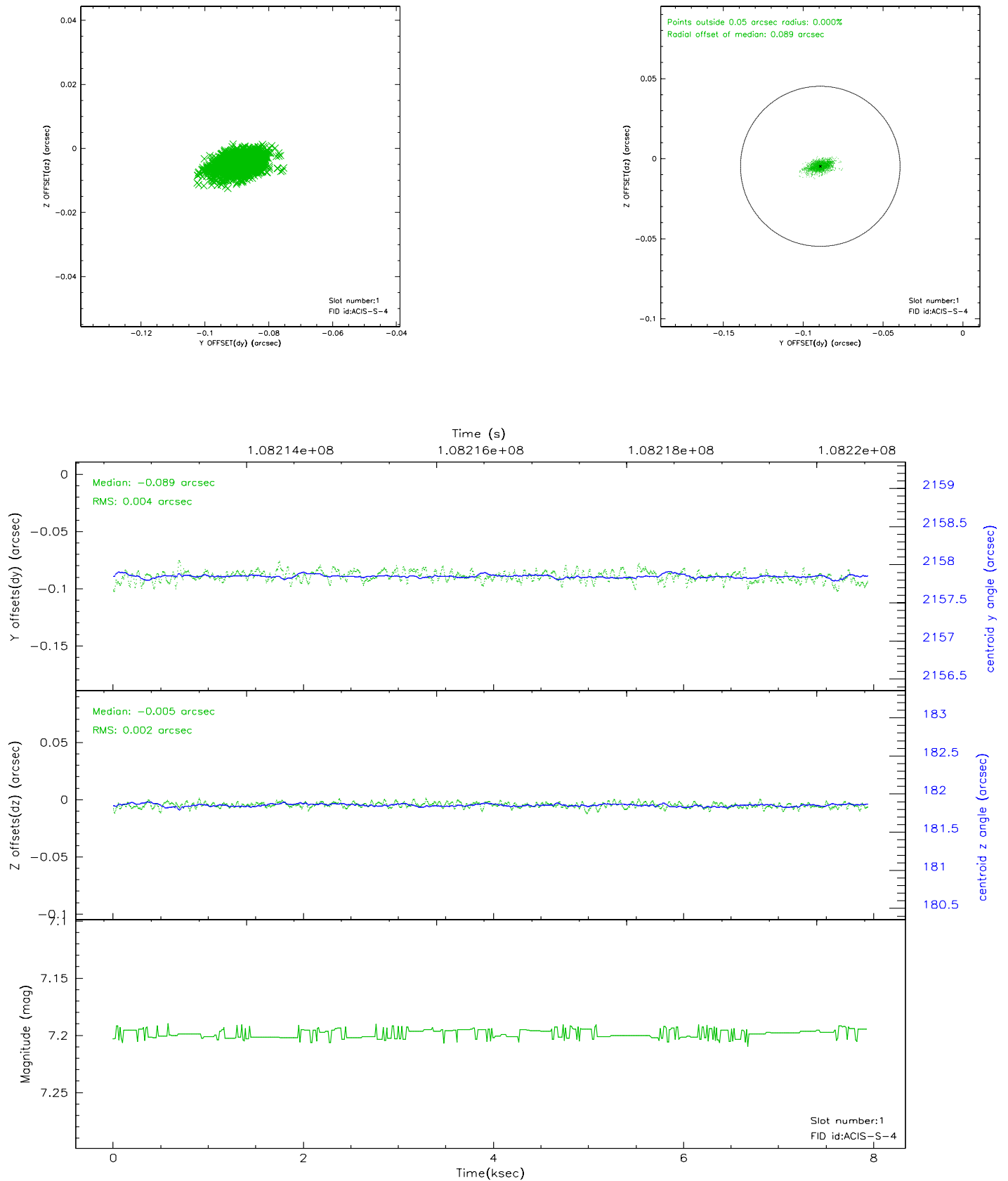


2.5 FID Slots

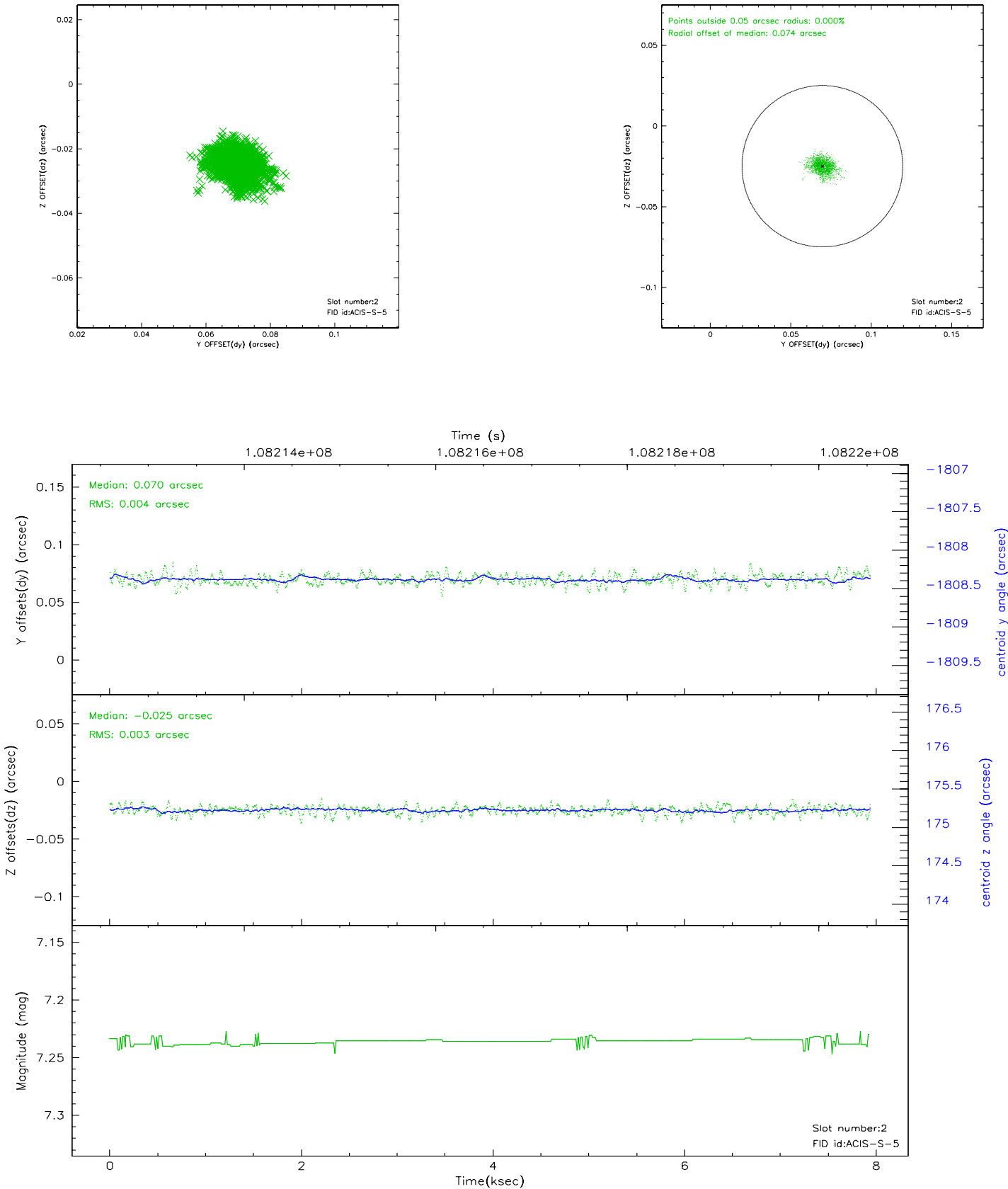
2.5.1 Slot 0



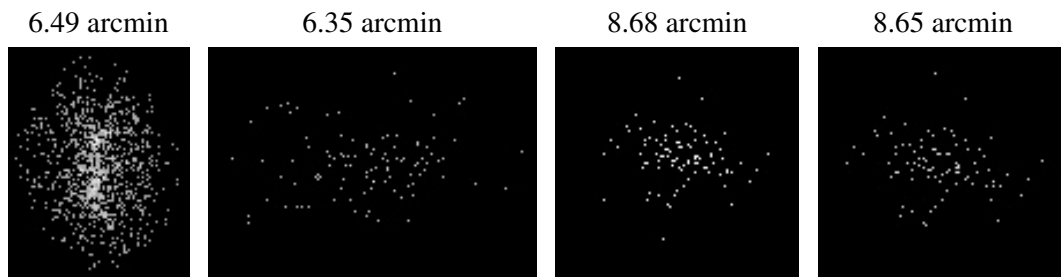
2.5.2 Slot 1



2.5.3 Slot 2



3 Point Sources



A Summary

A.1 Status

V&V Scientist	Jen Lauer
V&V Date (YYYY-MM-DD)	2006.11.28
V&V Edition	1
V&V Disposition and Status	OK
V&V Charge Time	7.51

A.2 Comments

Window constraint met.