

V&V Reference Report

L2 ASCDS Version : 7.6.9

Observation 1535 - L2 Version 001
Chandra X-Ray Center

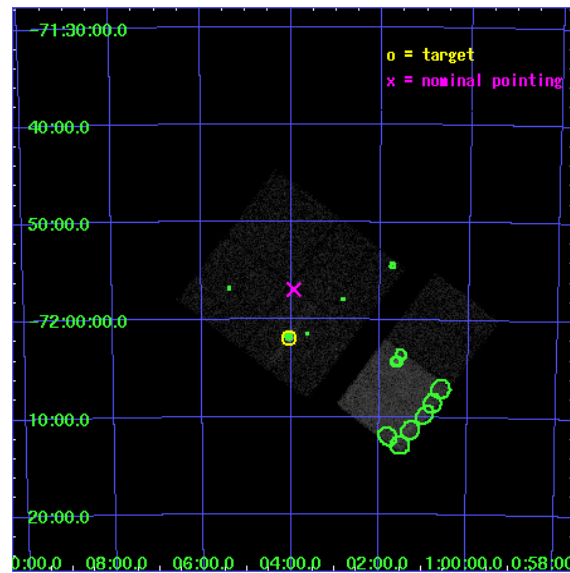
L2 Processing Date : Nov 25 2006

Contents

1	Front	2
2	OBI	3
2.1	OBI	3
2.1.1	Images	3
2.1.2	Bias	3
2.1.3	Parameters	4
2.1.4	Events	4
2.2	Compared Parameters	5
2.3	Aspect	6
2.4	Star Slots	9
2.4.1	Slot 3	9
2.4.2	Slot 4	10
2.4.3	Slot 5	11
2.4.4	Slot 6	12
2.4.5	Slot 7	13
2.5	FID Slots	14
2.5.1	Slot 0	14
2.5.2	Slot 1	15
2.5.3	Slot 2	16
3	Point Sources	17
A	Summary	18
A.1	Status	18
A.2	Comments	18

1 Front

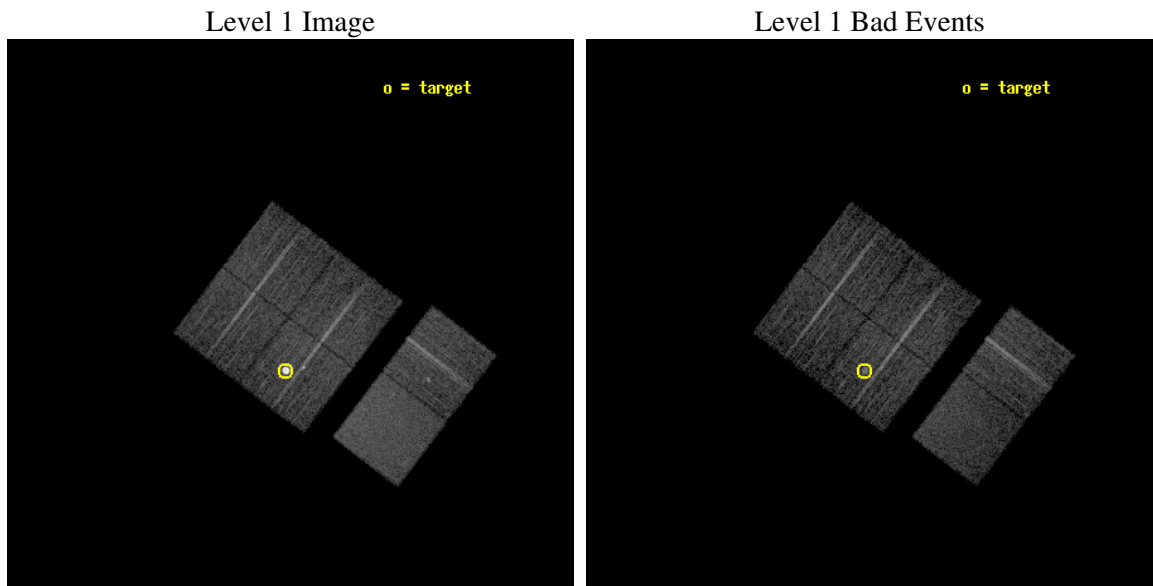
seq_num	590144
obs_id	1535
title	ACIS CALIBRATION OBSERVATION OF THE SUPERNOVA REMNANT E0102-72 (JUNE 2001)
observer	Dr. CXC Calibration
object	E0102-72.3 [Chip I3, T=120, Offsets=-4,2,0]
dtcycle	0
cycle	P
ra_targ	16.01
dec_targ	-72.032028
ra_nom	15.983391614062
dec_nom	-71.949155425085
roll_nom	127.31747505708
revision	2
ontime	7503.8771262318
livetime	7408.8585157671
ontime0	7510.3590467423
ontime1	7513.6000069976
ontime2	7513.6000069976
ontime3	7503.8771262318
ontime6	7513.6000069976
ontime7	7513.6000069976
l2events	74335



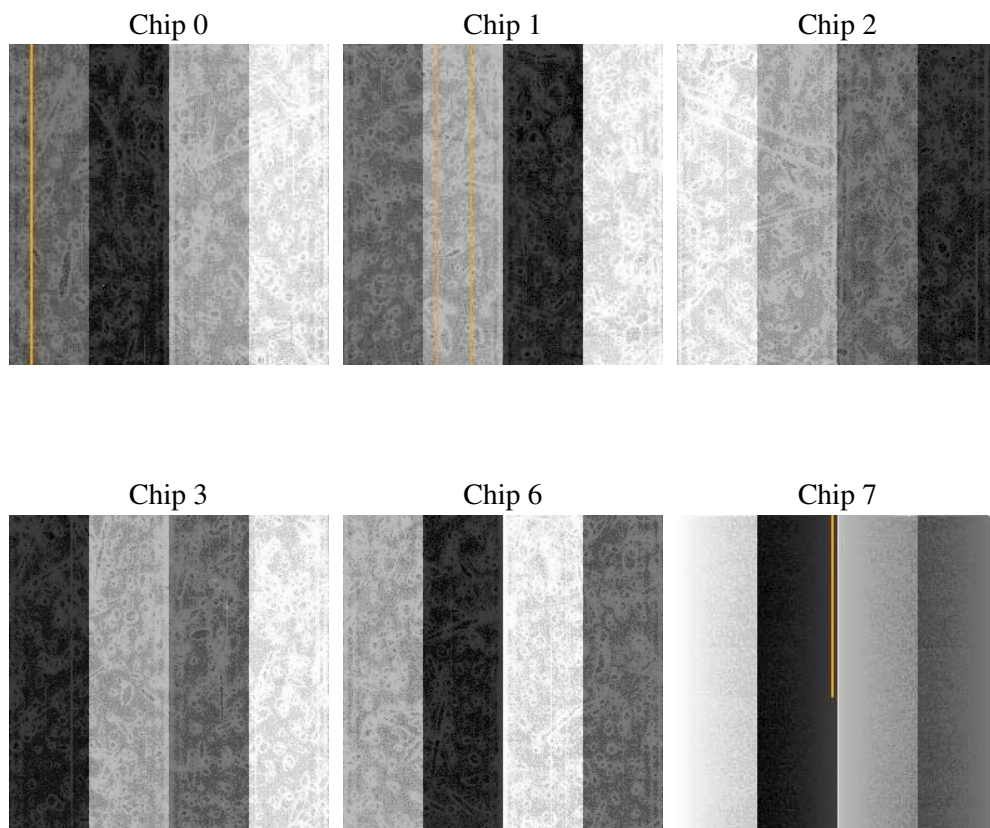
2 OBI

2.1 OBI

2.1.1 Images



2.1.2 Bias



2.1.3 Parameters

obi_num	0
ascdsver	7.6.9
caldbver	3.2.4
date	2006-11-25T06:43:24
revision	2

sched_exp_time	7755.000000
ontime	7509.3941219747
ontime0	7515.8760424852
ontime1	7519.1170027405
ontime2	7519.1170027405
ontime3	7509.3941219747
ontime6	7519.1170027405
ontime7	7519.1170027405
l1events	333796

2.1.4 Events

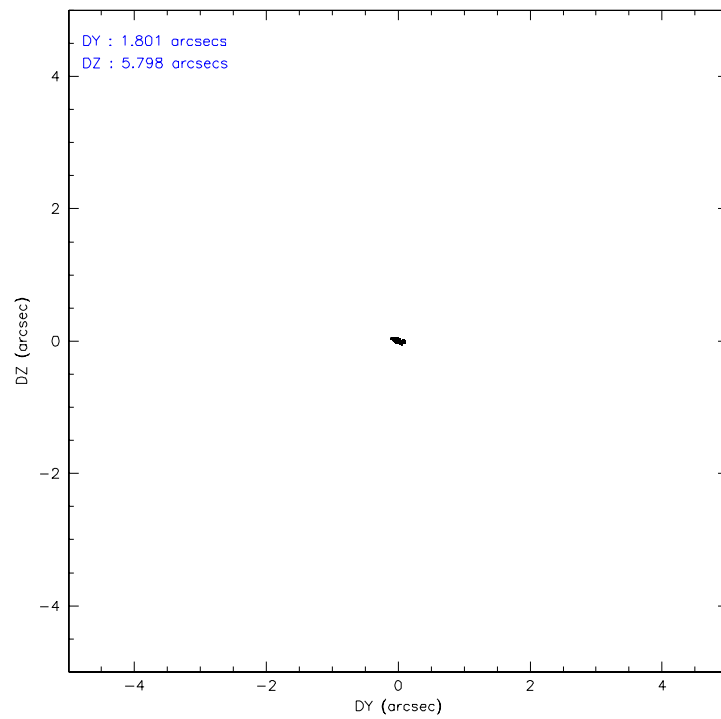
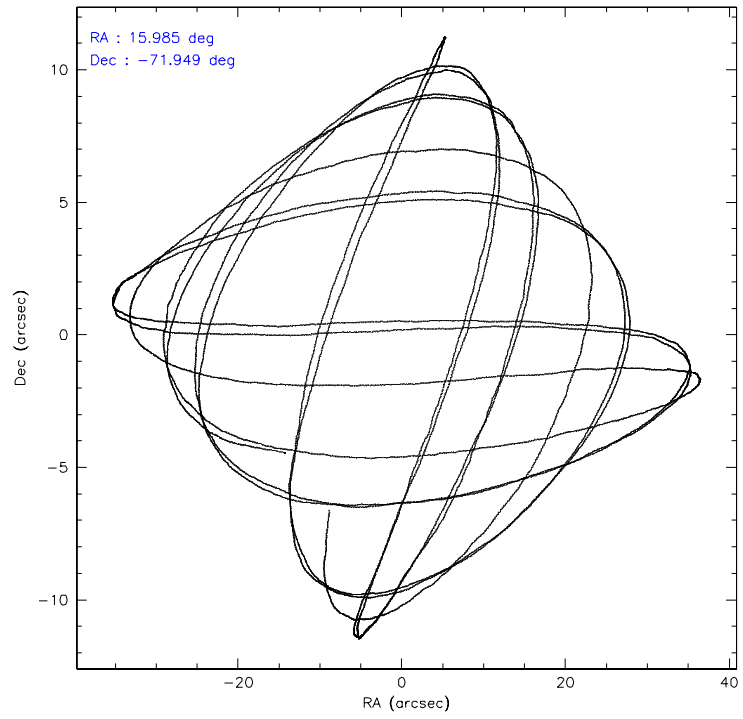
	ccd 0	ccd 1	ccd 2	ccd 3	ccd 6	ccd 7
level 1 events	46725	44858	48576	76899	53409	63329
rejected events	41058	38772	42810	43893	47157	38824
rejected %	87%	86%	88%	57%	88%	61%

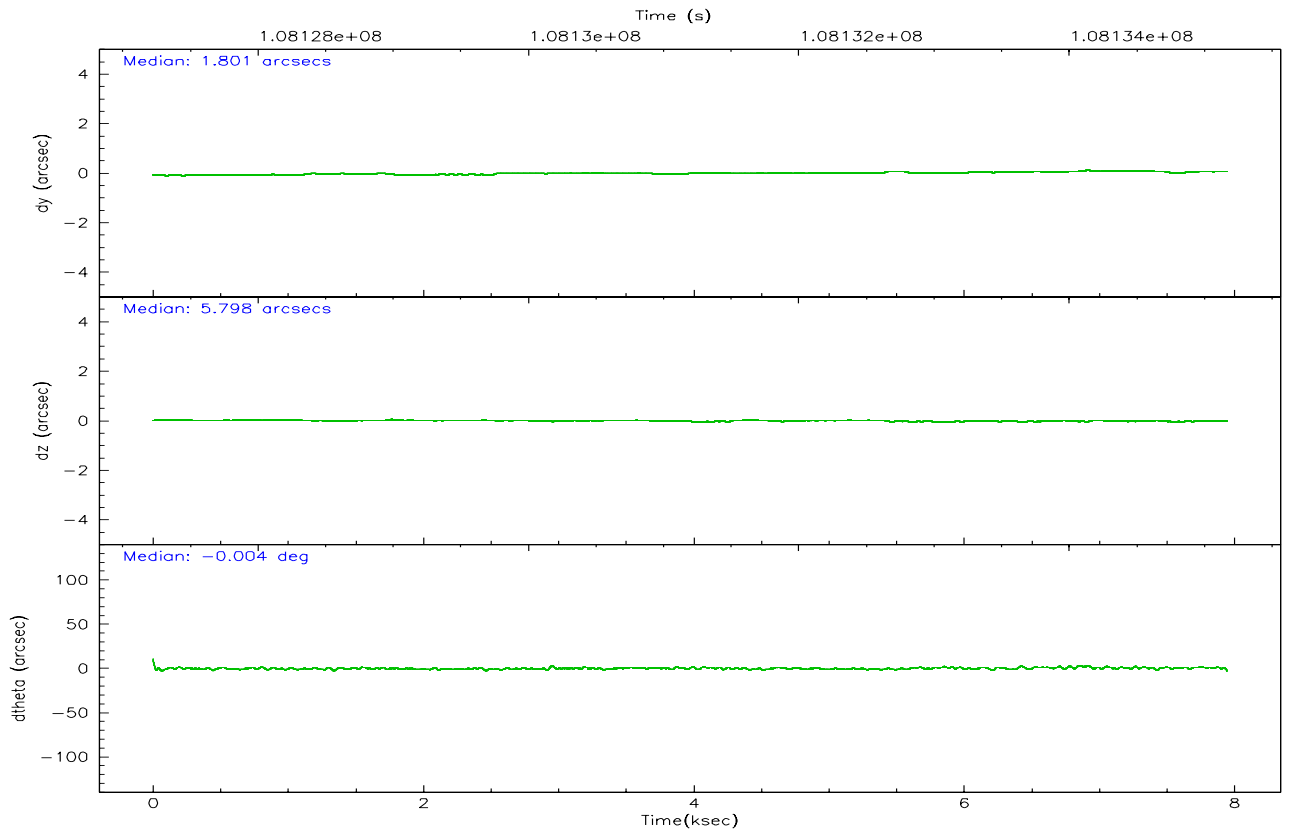
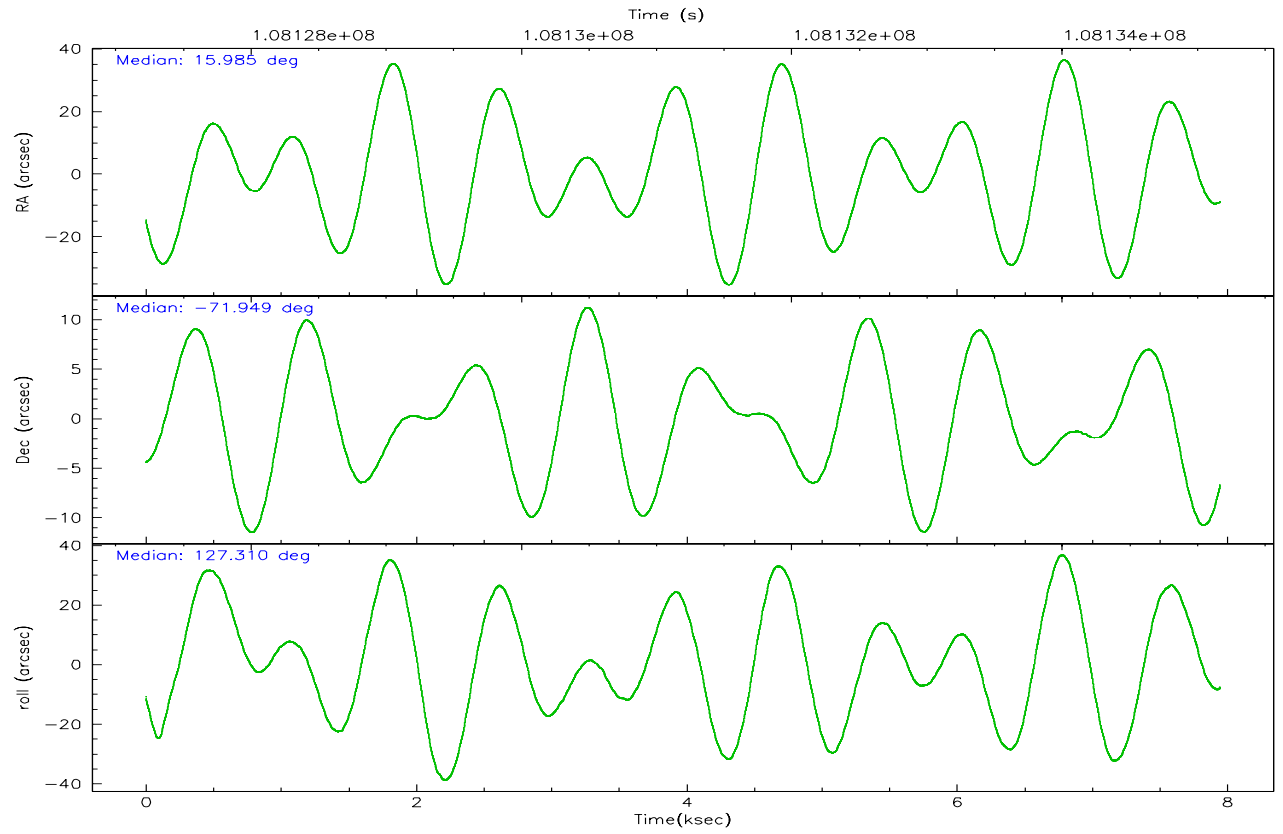
	ccd 0	ccd 1	ccd 2	ccd 3	ccd 6	ccd 7
grade 0 events	2386	2555	2628	26600	2803	1730
	5%	5%	5%	34%	5%	2%
grade 1 events	24	22	22	283	24	38
	0%	0%	0%	0%	0%	0%
grade 2 events	1286	1251	1171	3104	1205	5937
	2%	2%	2%	4%	2%	9%
grade 3 events	545	589	508	1043	566	1362
	1%	1%	1%	1%	1%	2%
grade 4 events	503	556	531	1015	559	1311
	1%	1%	1%	1%	1%	2%
grade 5 events	1762	1856	1579	1876	2117	4187
	3%	4%	3%	2%	3%	6%
grade 6 events	952	1138	934	1264	1128	14194
	2%	2%	1%	1%	2%	22%
grade 7 events	39267	36891	41203	41714	45007	34570
	84%	82%	84%	54%	84%	54%

2.2 Compared Parameters

Parameter	Planned	Actual	Parameter	Planned	Actual
Instrument	ACIS	ACIS	Obspar format version number	6	6
Detector	ACIS-012367	ACIS-012367	Obspar file type	PREDICTED	ACTUAL
Grating	NONE	NONE	Obspar update status	NONE	UPDATED
Data mode	FAINT	FAINT	Number of optional ACIS chips dropped	0	0
Observation mode	POINTING	POINTING	On-chip summing requested	N	N
Pointing RA	16.065338	15.98339161406199	Subarray requested	NONE	NONE
Pointing Dec	-71.959671	-71.94915542508545	Alternating exposures requested	N	N
Pointing Roll	127.186702	127.3174750570815	Primary exposure time	0.000000	3.2
Window start time	107740864.184000	107740864.184000			
Window stop time	110246464.184000	110246464.184000			
SIM focus pos (mm)	-0.782348	-0.7809083437167272			
SIM defocus (mm)	0	0.001439871863259334			
SIM translation stage pos (mm)	-233.592463	-233.5874344608287			
SIM translation stage offset (mm)	0	-0.005018542100998502			
Observation start time	108127415.184000	108127038.54566			
Observation start date	2001-06-05T11:22:31	2001-06-05T11:17:18			
Observation end time	108135170.184000	108135304.14598			
Observation end date	2001-06-05T13:31:46	2001-06-05T13:35:04			
Read mode	TIMED	TIMED			

2.3 Aspect



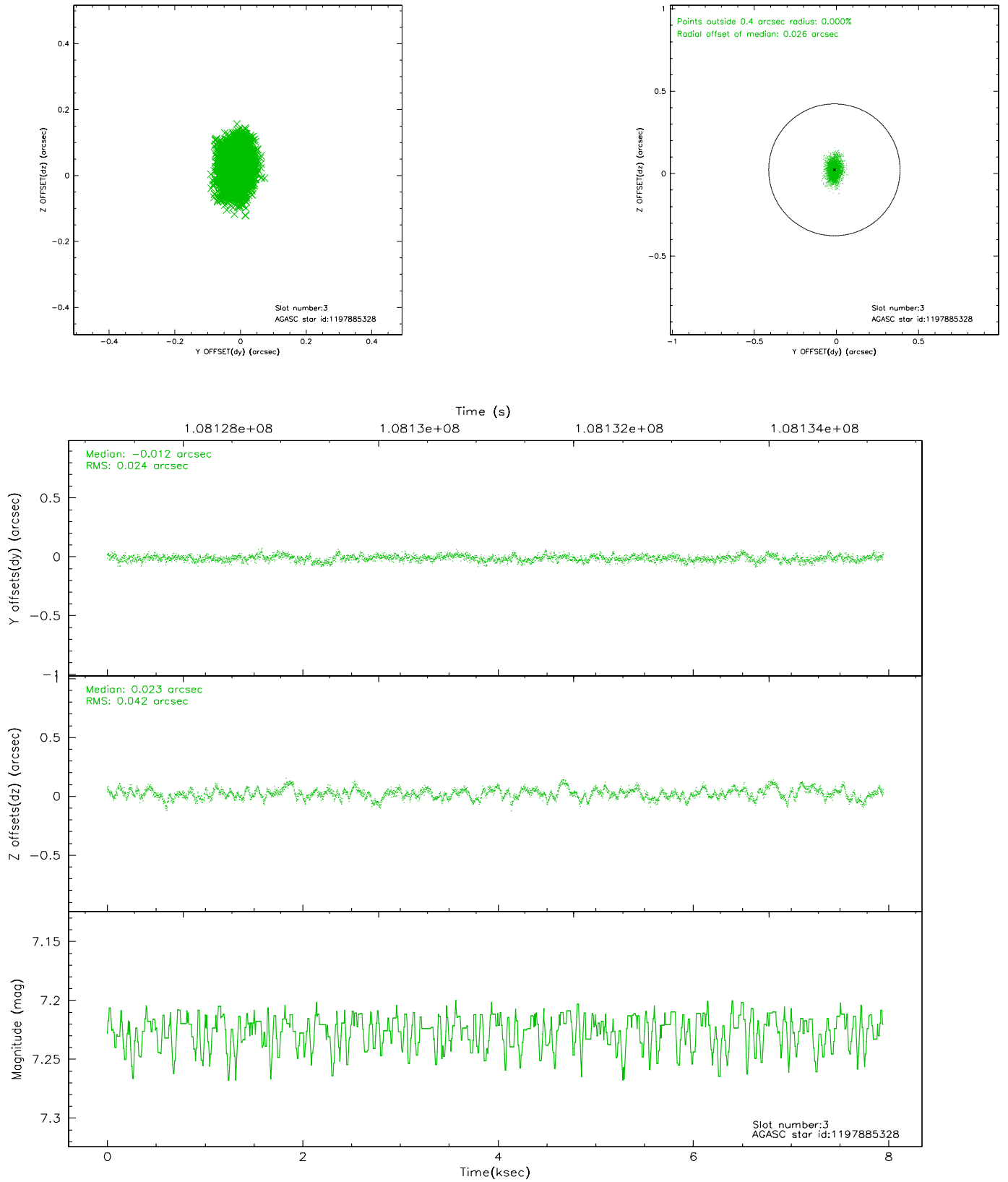


Slot Statistics

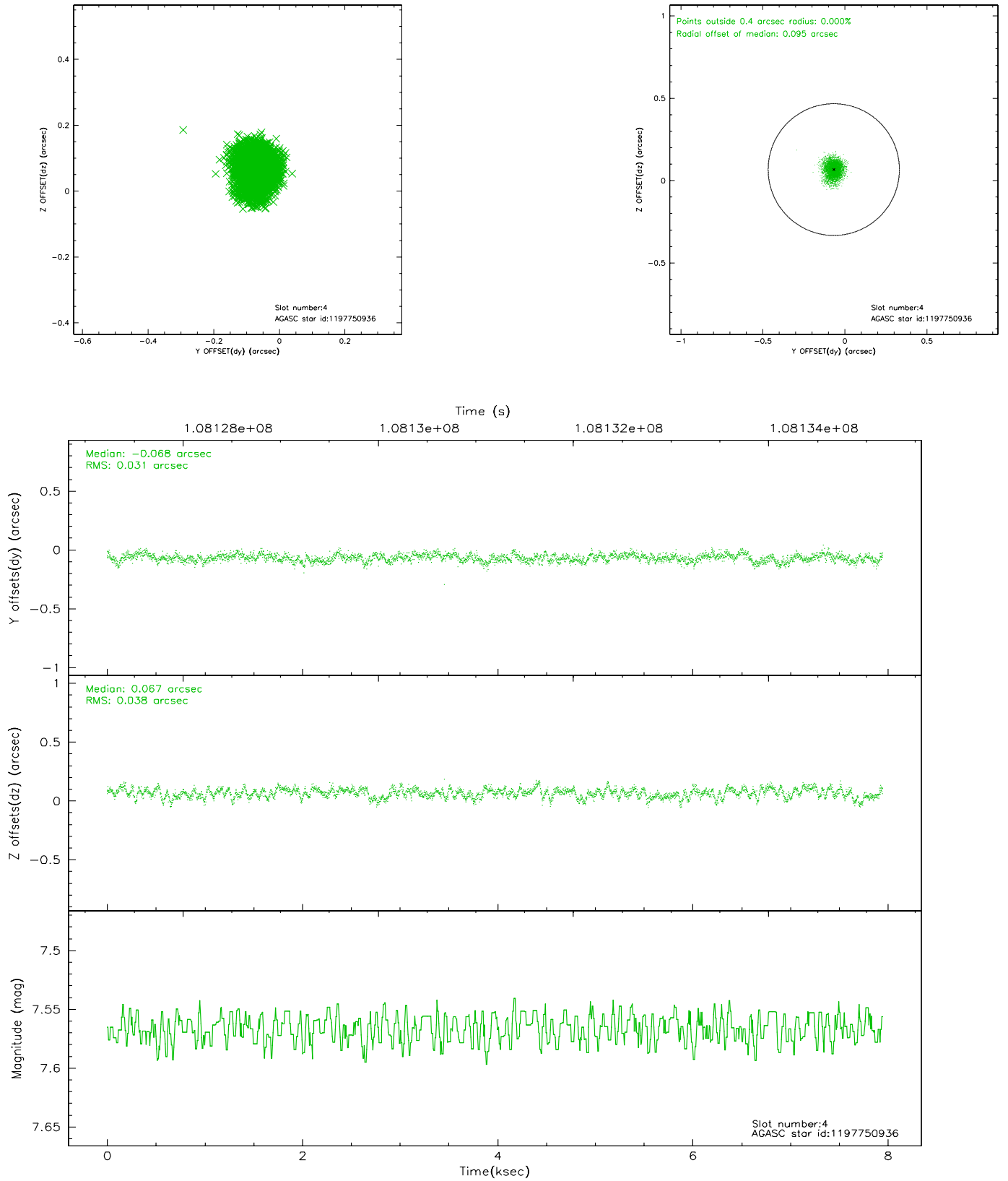
slot	status	id	mag	n_pts	med_dy	med_dz	dr1	dr2	ra	dec	mean_y	mean_z
0	FID	ACIS-I-2	7.15	1936	-0.039	0.007	0.007	0.011	0.000000	0.000000	-756.16	-835.54
1	FID	ACIS-I-4	7.18	1935	-0.049	0.026	0.008	0.014	0.000000	0.000000	2157.52	1070.37
2	FID	ACIS-I-6	7.26	1937	-0.012	0.031	0.010	0.019	0.000000	0.000000	404.79	1713.33
3	GUIDE	1197885328	7.22	3875	-0.012	0.023	0.050	0.087	16.283090	-71.733943	499.71	-686.10
4	GUIDE	1197750936	7.57	3877	-0.068	0.067	0.052	0.086	15.387940	-71.549550	1640.42	-274.17
5	GUIDE	1197884536	8.50	3876	0.065	-0.050	0.075	0.123	17.160729	-71.835289	-393.38	-1242.81
6	GUIDE	1197878768	9.61	3873	-0.020	0.010	0.107	0.174	16.656786	-71.304581	1465.00	-1966.71
7	GUIDE	1197749416	10.28	3854	0.034	-0.045	0.157	0.246	13.610513	-71.871242	1871.89	2031.72

2.4 Star Slots

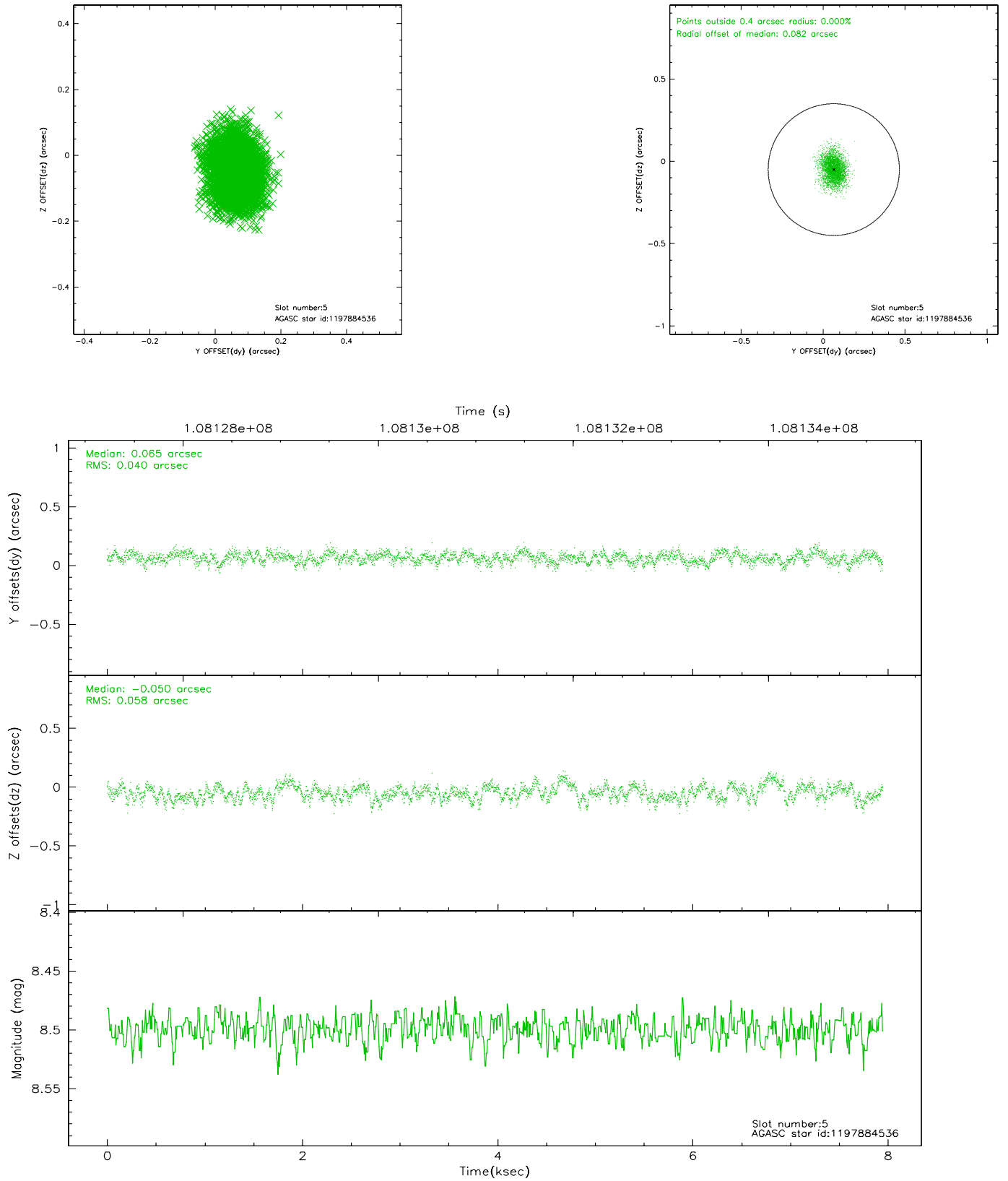
2.4.1 Slot 3



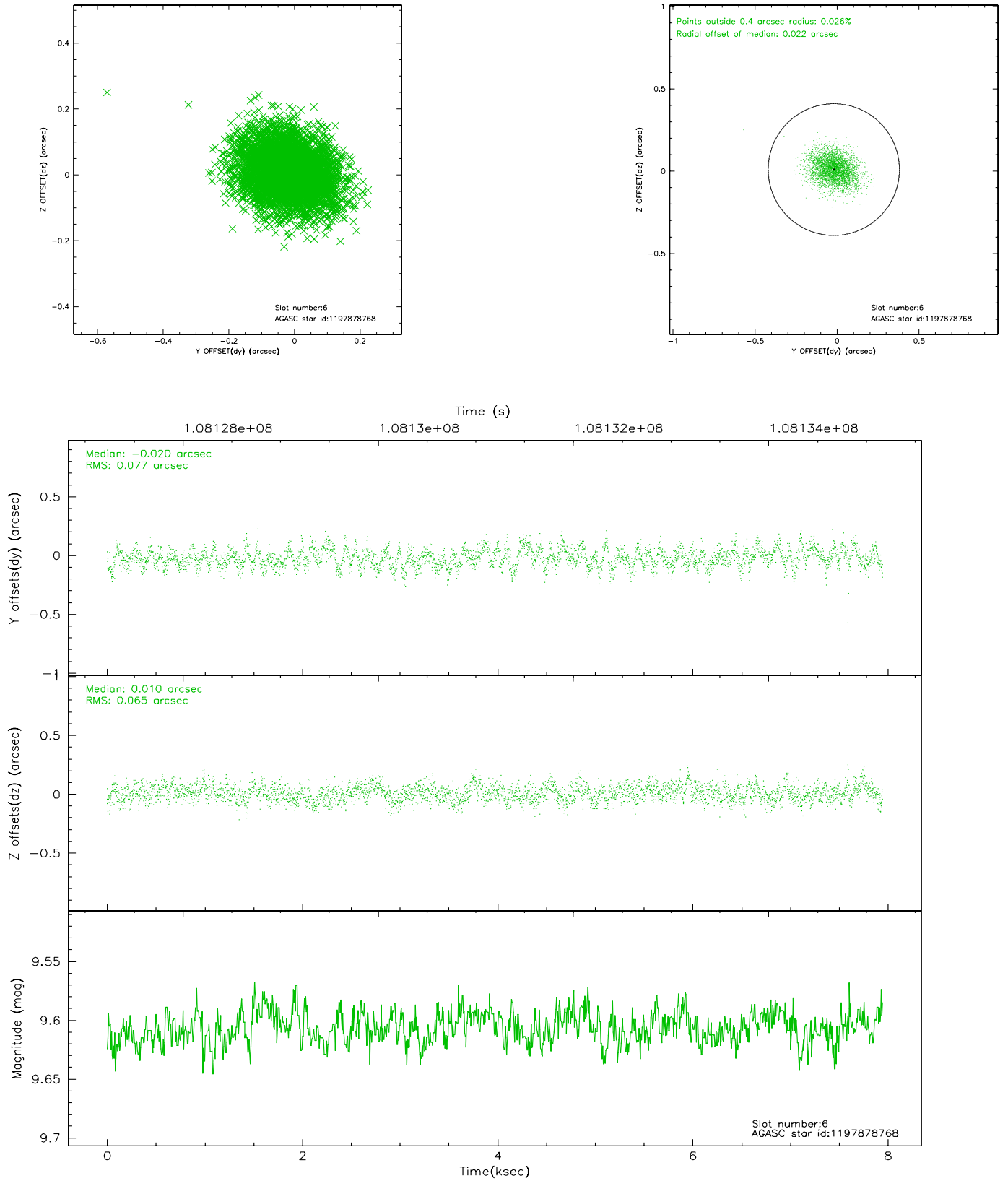
2.4.2 Slot 4



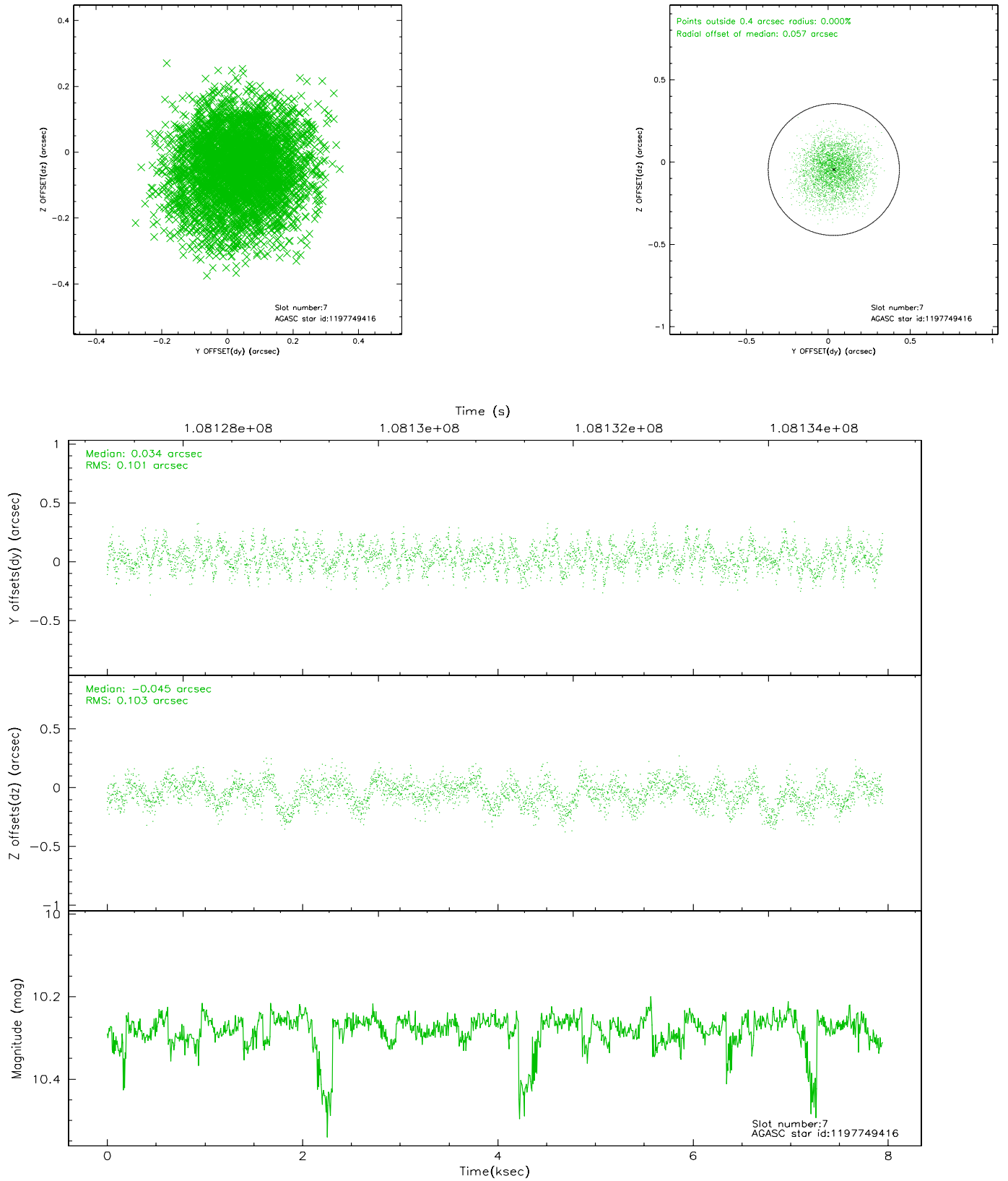
2.4.3 Slot 5



2.4.4 Slot 6

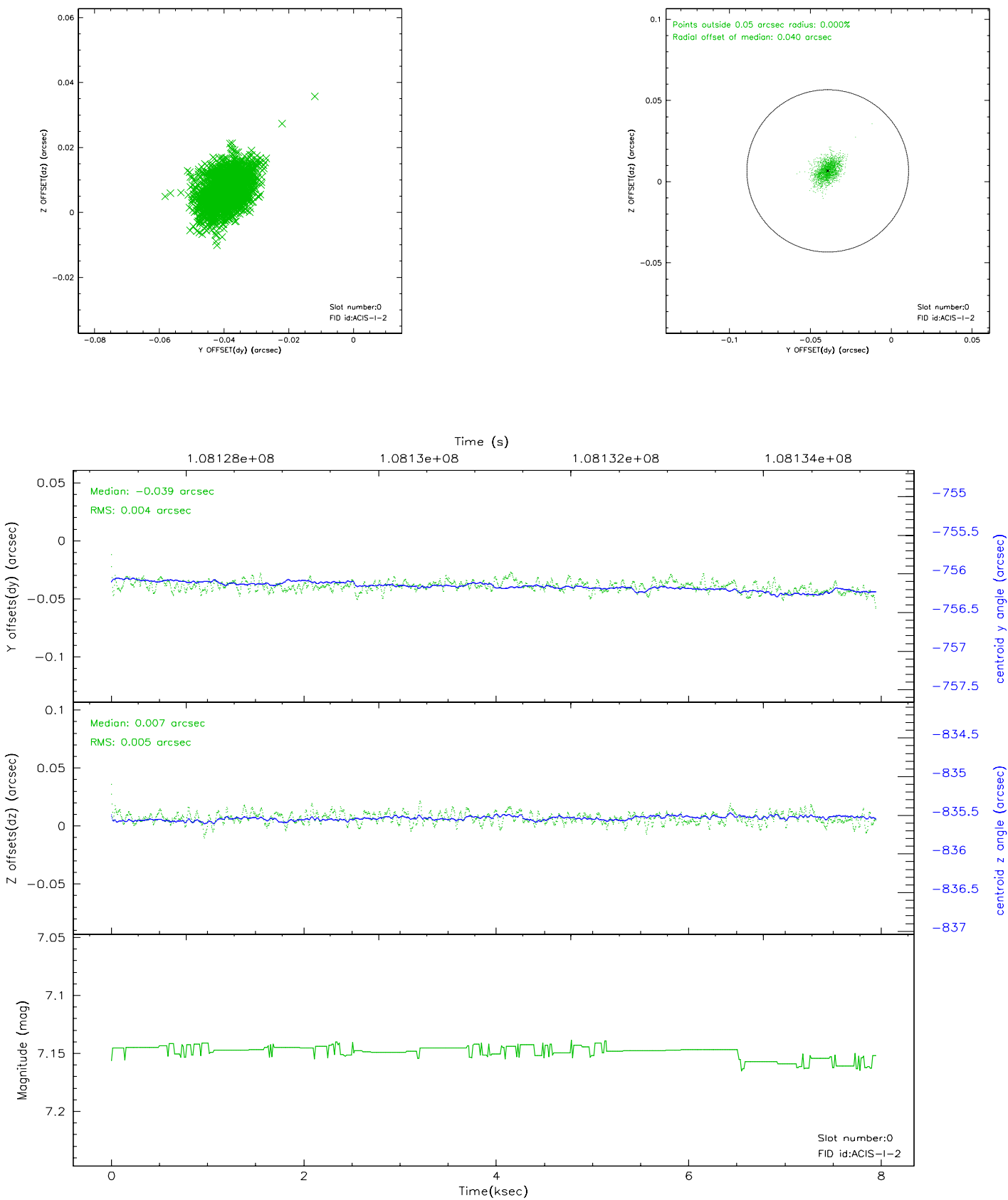


2.4.5 Slot 7

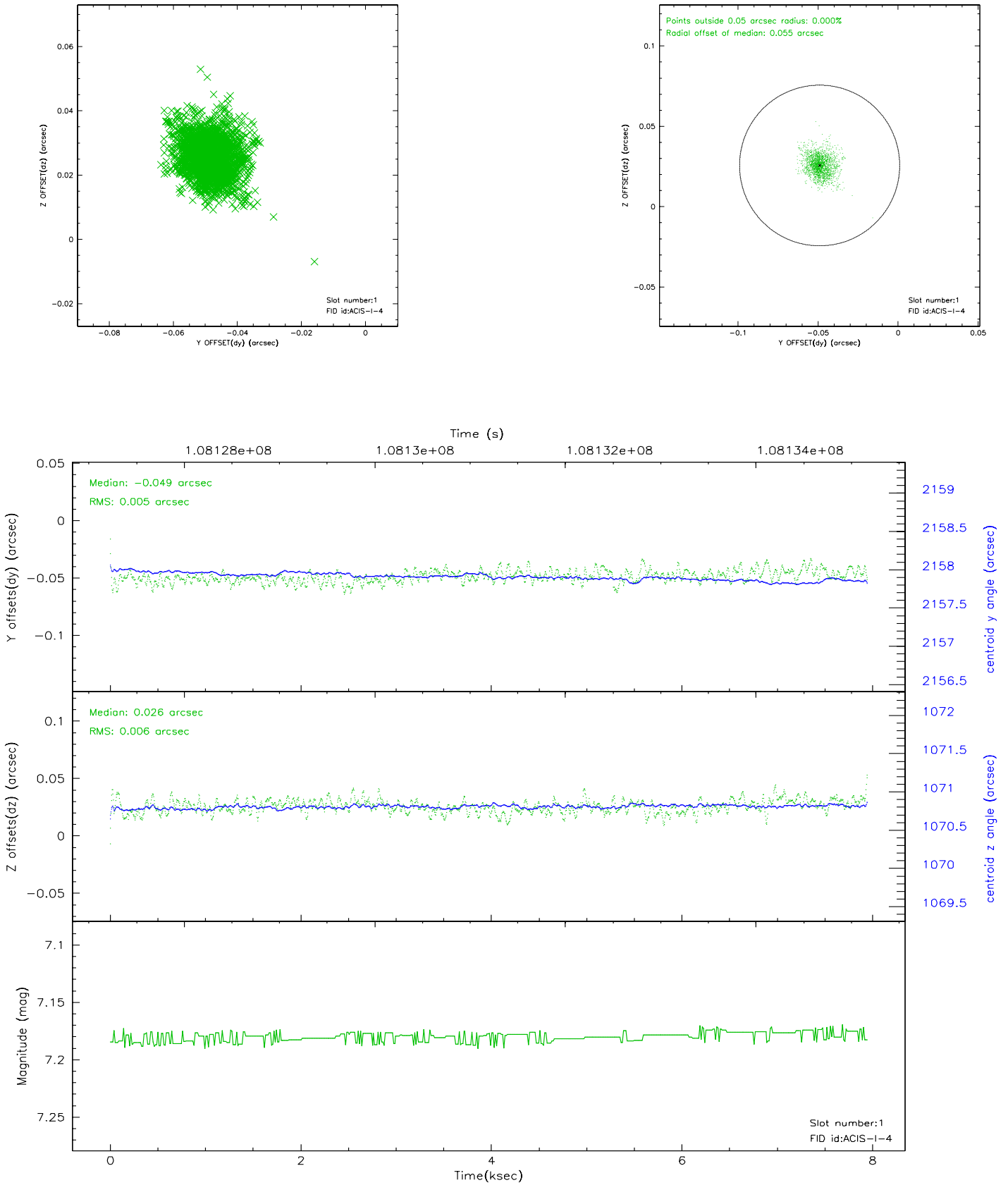


2.5 FID Slots

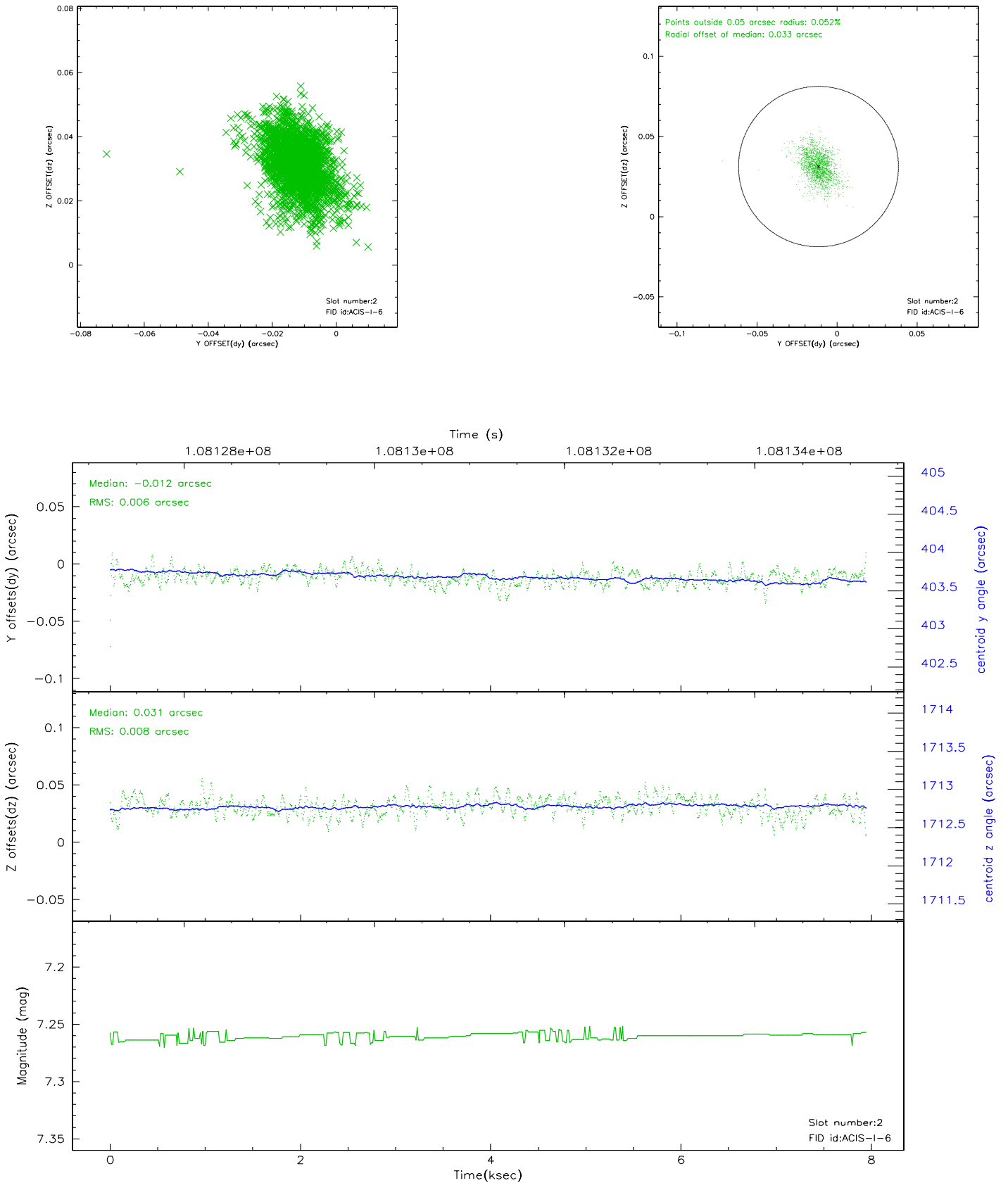
2.5.1 Slot 0



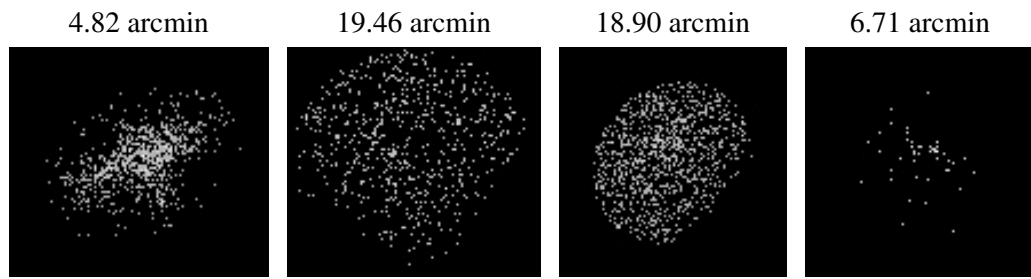
2.5.2 Slot 1



2.5.3 Slot 2



3 Point Sources



A Summary

A.1 Status

V&V Scientist	Jen Lauer
V&V Date (YYYY-MM-DD)	2006.11.27
V&V Edition	1
V&V Disposition and Status	OK
V&V Charge Time	7.507

A.2 Comments

Window constraint met.