

# V&V Reference Report

## L2 ASCDS Version : 7.6.10

Observation 1478 - L2 Version 001  
Chandra X-Ray Center

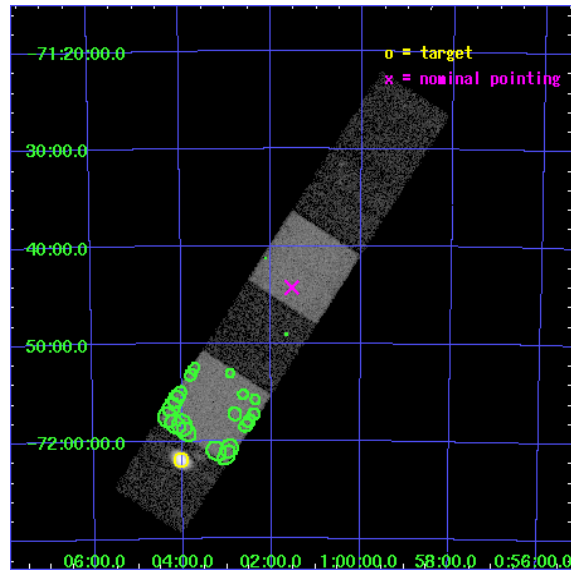
L2 Processing Date : Jun 19 2007

## Contents

<b>1</b>	<b>Front</b>	<b>2</b>
<b>2</b>	<b>OBI</b>	<b>3</b>
2.1	OBI . . . . .	3
2.1.1	Images . . . . .	3
2.1.2	Bias . . . . .	3
2.1.3	Parameters . . . . .	4
2.1.4	Events . . . . .	4
2.2	Compared Parameters . . . . .	5
2.3	Aspect . . . . .	6
2.4	Star Slots . . . . .	9
2.4.1	Slot 3 . . . . .	9
2.4.2	Slot 4 . . . . .	10
2.4.3	Slot 5 . . . . .	11
2.4.4	Slot 6 . . . . .	12
2.4.5	Slot 7 . . . . .	13
2.5	FID Slots . . . . .	14
2.5.1	Slot 0 . . . . .	14
2.5.2	Slot 1 . . . . .	15
2.5.3	Slot 2 . . . . .	16
<b>3</b>	<b>Point Sources</b>	<b>17</b>
<b>A</b>	<b>Summary</b>	<b>18</b>
A.1	Status . . . . .	18
A.2	Comments . . . . .	18

# 1 Front

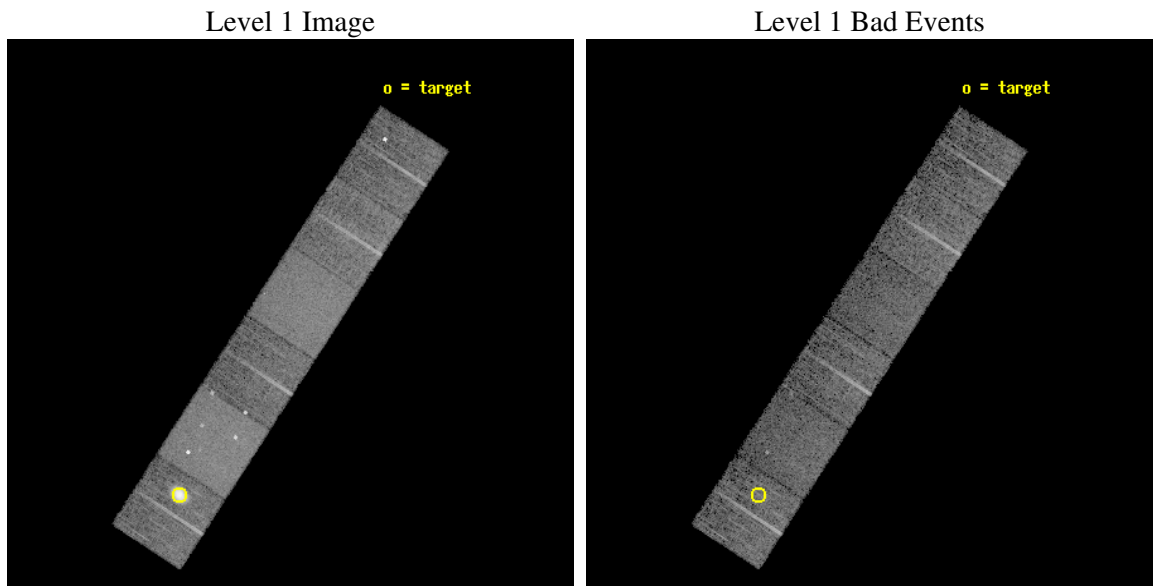
seq_num	590132
obs_id	1478
title	ACIS CALIBRATION OBSERVATION OF THE SUPERNOVA REMNANT E0102-72 (DEC 2000)
observer	Dr. CXC Calibration
object	E0102-72.3 [Chip S0, T=120, Offsets=21,0,0]
dtcycle	0
cycle	P
ra_targ	16.01
dec_targ	-72.032028
ra_nom	15.384083583134
dec_nom	-71.737342074567
roll_nom	303.0134551976
revision	2
ontime	7948.8000074029
livetime	7848.1475155164
ontime4	7948.8000074029
ontime5	7948.8000074029
ontime6	7948.8000074029
ontime7	7948.8000074029
ontime8	7948.8000074029
ontime9	7948.8000074029
l2events	113598



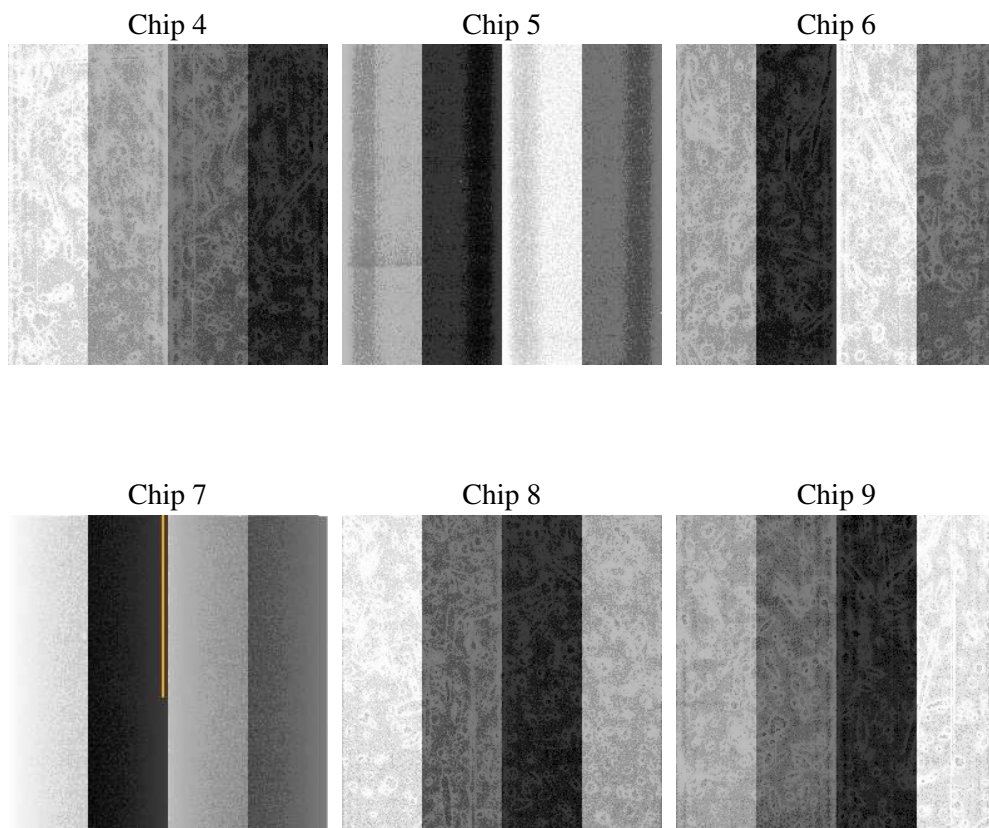
## 2 OBI

### 2.1 OBI

#### 2.1.1 Images



#### 2.1.2 Bias



### 2.1.3 Parameters

obi_num	0
ascdsver	7.6.10
caldsver	3.4.0
date	2007-06-20T00:06:24
revision	2

sched_exp_time	8000.000000
ontime	7948.8000074029
ontime4	7948.8000074029
ontime5	7948.8000074029
ontime6	7948.8000074029
ontime7	7948.8000074029
ontime8	7948.8000074029
ontime9	7948.8000074029
l1events	380543

### 2.1.4 Events

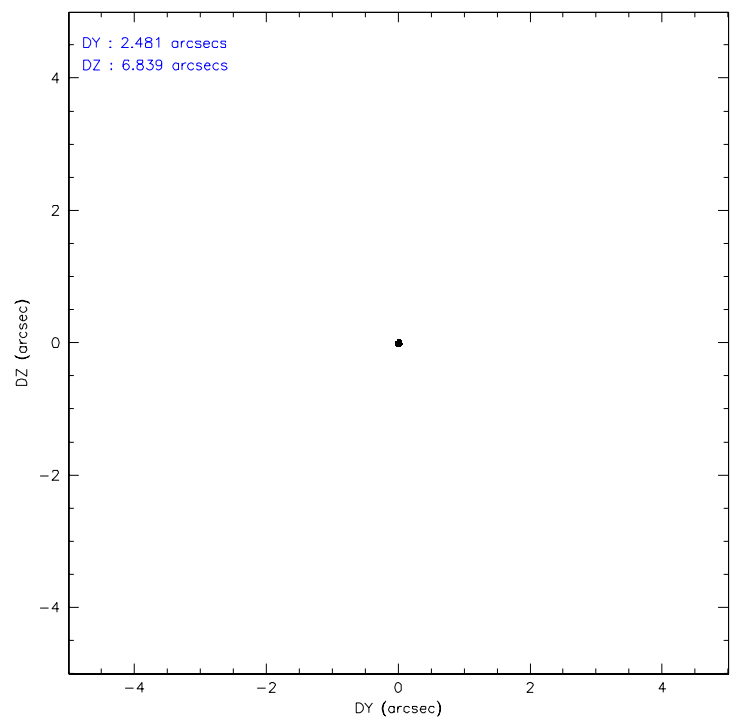
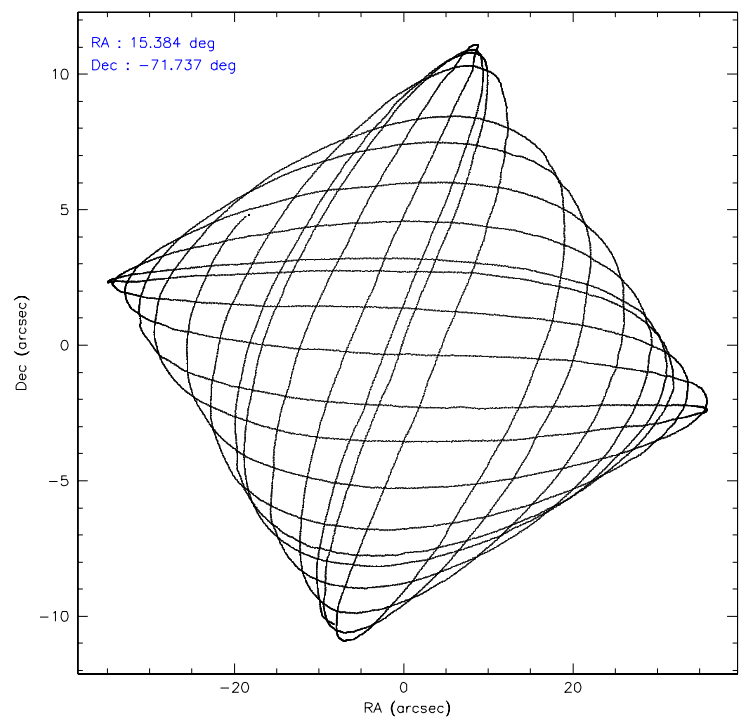
	ccd 4	ccd 5	ccd 6	ccd 7	ccd 8	ccd 9
level 1 events	73184	79978	48386	70967	60002	48026
rejected events	45823	36149	41824	34905	48045	40141
rejected %	62%	45%	86%	49%	80%	83%

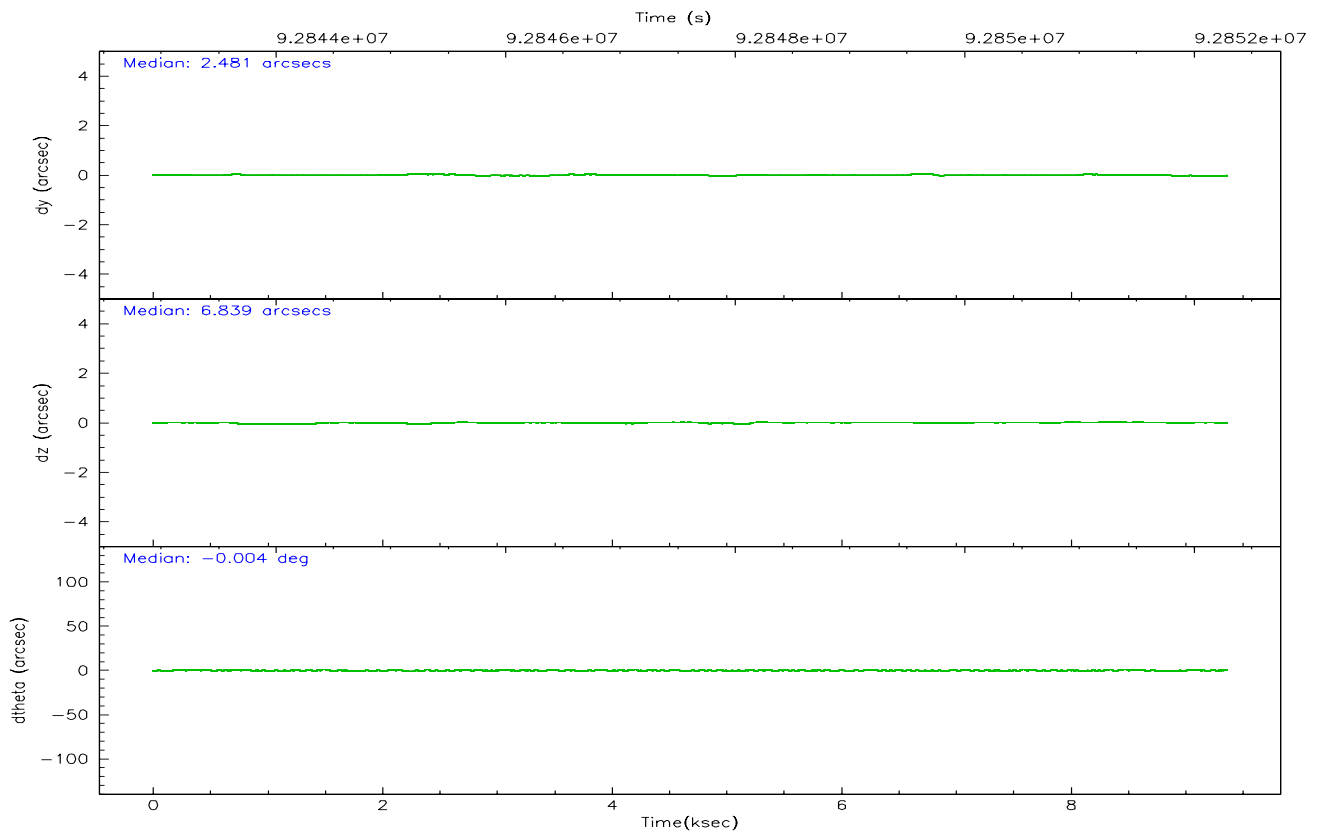
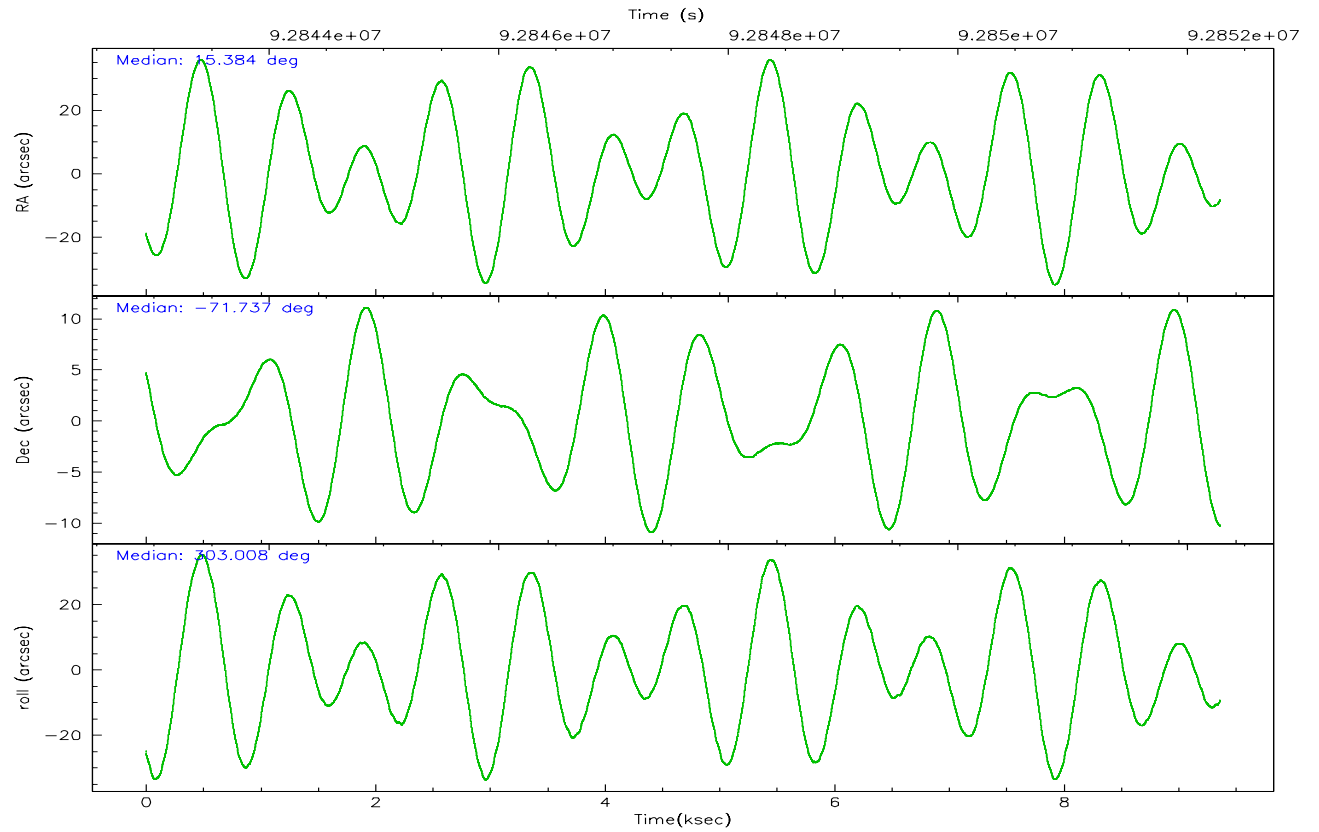
	ccd 4	ccd 5	ccd 6	ccd 7	ccd 8	ccd 9
grade 0 events	21907	7130	3358	4305	3687	4555
	29%	8%	6%	6%	6%	9%
grade 1 events	103	324	29	50	24	30
	0%	0%	0%	0%	0%	0%
grade 2 events	2850	12991	1095	7051	2607	1129
	3%	16%	2%	9%	4%	2%
grade 3 events	795	2235	536	3199	1324	566
	1%	2%	1%	4%	2%	1%
grade 4 events	794	2143	547	3119	1221	526
	1%	2%	1%	4%	2%	1%
grade 5 events	1690	5221	1997	5761	2485	1995
	2%	6%	4%	8%	4%	4%
grade 6 events	1027	19344	1026	18398	3124	1115
	1%	24%	2%	25%	5%	2%
grade 7 events	44018	30590	39798	29084	45530	38110
	60%	38%	82%	40%	75%	79%

## 2.2 Compared Parameters

Parameter	Planned	Actual	Parameter	Planned	Actual
Instrument	ACIS	ACIS	Obspar format version number	6	6
Detector	ACIS-456789	ACIS-456789	Obspar file type	PREDICTED	ACTUAL
Grating	NONE	NONE	Obspar update status	NONE	UPDATED
Observation mode	POINTING	POINTING	Number of optional ACIS chips dropped	0	0
Pointing RA	15.306162	15.38408358313358	On-chip summing requested	N	N
Pointing Dec	-71.725111	-71.73734207456685	Subarray requested	NONE	NONE
Pointing Roll	302.782831	303.0134551976017	Alternating exposures requested	N	N
SIM focus pos (mm)	-0.684267	-0.6828225247311905	Primary exposure time	0.000000	3.2
SIM defocus (mm)	0	0.001444936568705701			
SIM translation stage pos (mm)	-190.132523	-190.1400660498719			
SIM translation stage offset (mm)	0	0.00754346686406393			
Observation start time	92844288.184000	92842742.255427			
Observation start date	2000-12-10T14:03:44	2000-12-10T13:39:02			
Observation end time	92852288.184000	92852422.35579699			
Observation end date	2000-12-10T16:17:04	2000-12-10T16:20:22			
Read mode	TIMED	TIMED			

## 2.3 Aspect





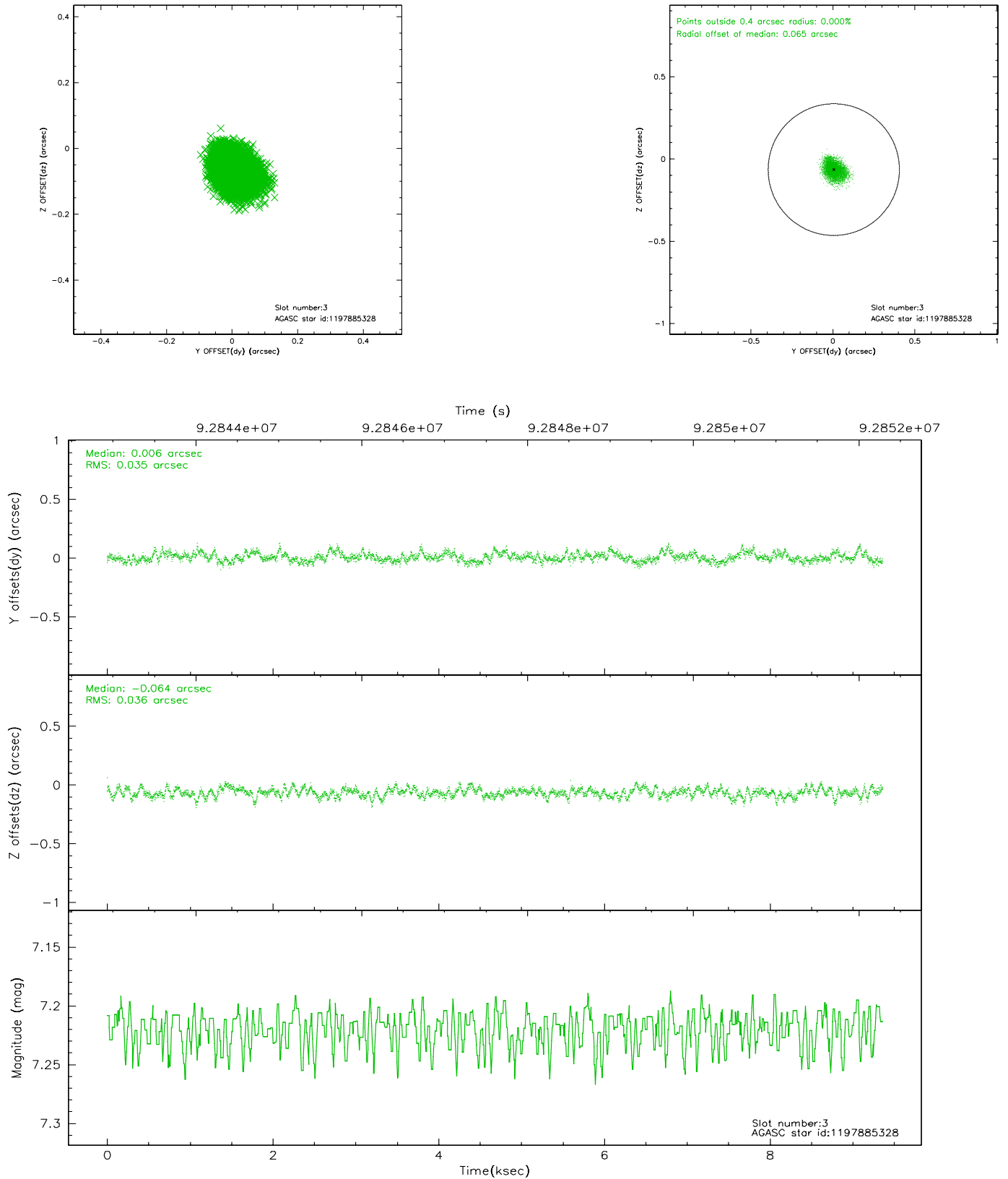
### Slot Statistics

slot	status	id	mag	n_pts	med_dy	med_dz	dr1	dr2	ra	dec	mean_y	mean_z
0	FID	ACIS-S-2	7.11	2284	-0.007	0.026	0.006	0.010	0.000000	0.000000	-755.12	-1727.97
1	FID	ACIS-S-4	7.20	2284	-0.065	-0.003	0.005	0.009	0.000000	0.000000	2157.84	179.88
2	FID	ACIS-S-5	7.24	2284	0.041	-0.014	0.006	0.011	0.000000	0.000000	-1807.17	174.21
3	GUIDE	1197885328	7.22	4568	0.006	-0.064	0.054	0.087	16.283090	-71.733943	630.66	904.57
4	GUIDE	1197750936	7.57	4568	-0.013	-0.071	0.057	0.095	15.387940	-71.549550	-481.07	420.39
5	GUIDE	1197884536	8.50	4567	0.032	0.032	0.071	0.113	17.160729	-71.835289	1486.62	1517.62
6	GUIDE	1197884712	8.31	4566	0.049	0.095	0.056	0.089	16.087398	-72.252690	2065.70	-310.21
7	GUIDE	1197750160	10.25	4501	-0.084	0.009	0.173	0.270	12.997994	-71.773722	-1217.62	-2306.44

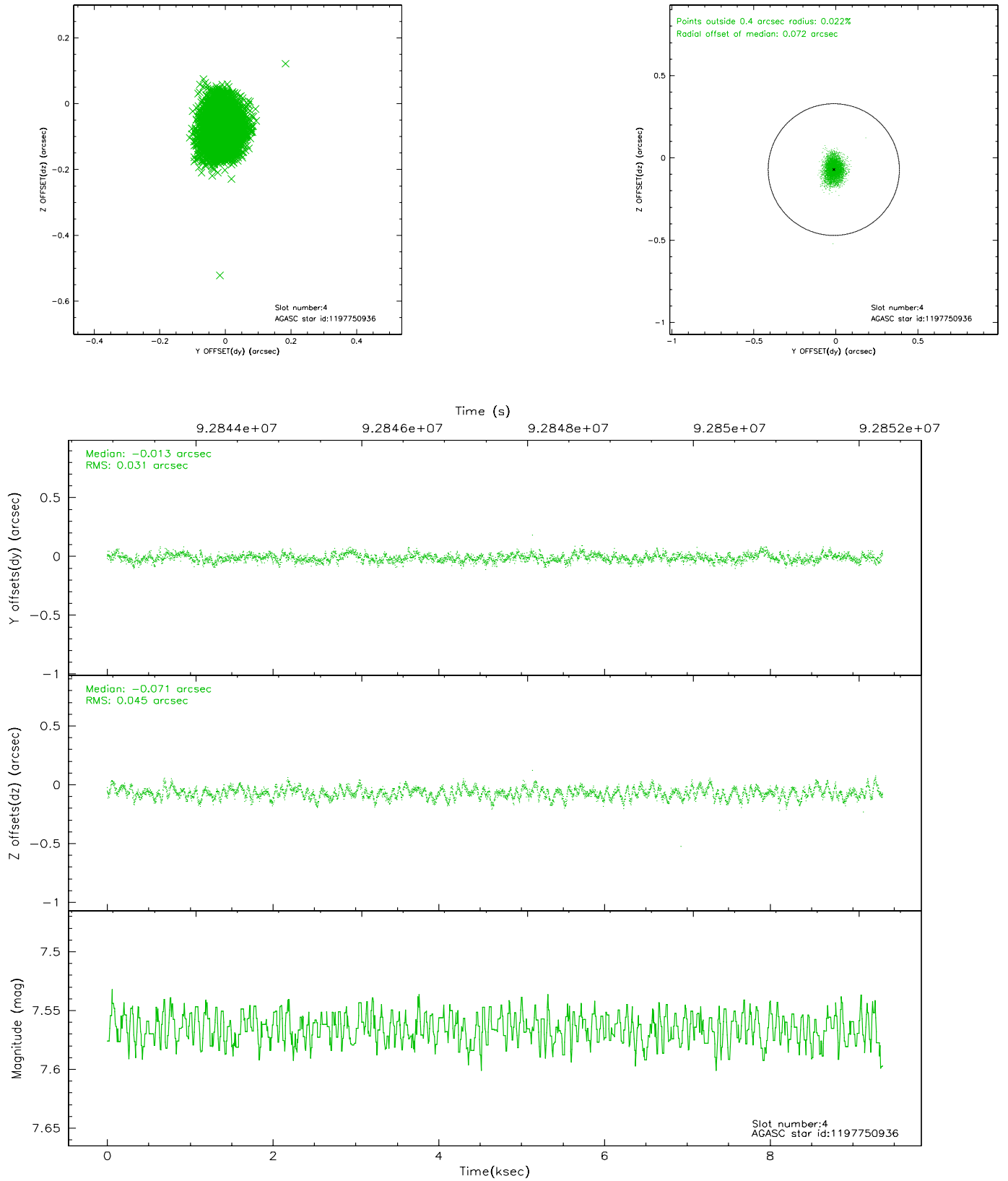


## 2.4 Star Slots

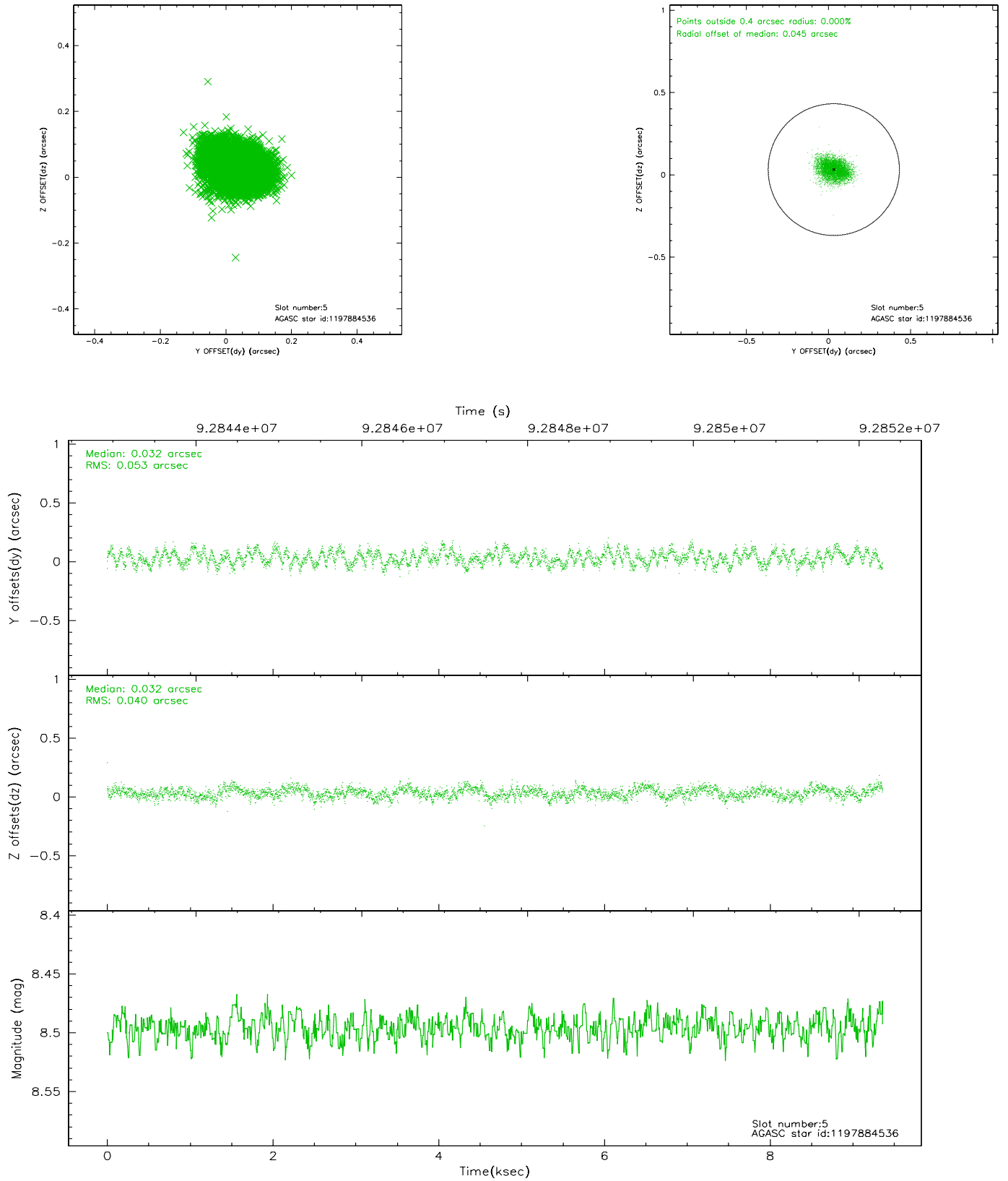
### 2.4.1 Slot 3



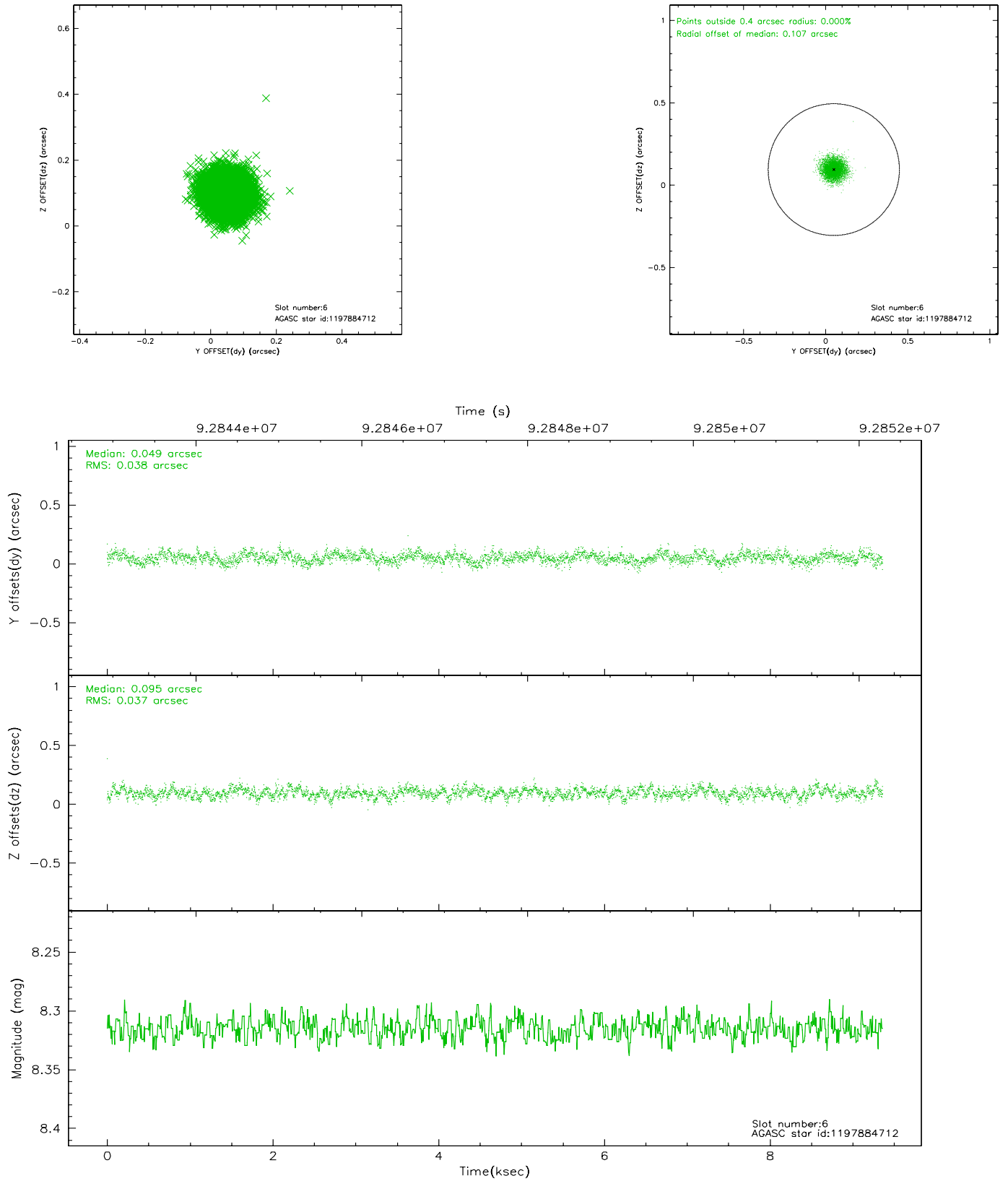
## 2.4.2 Slot 4



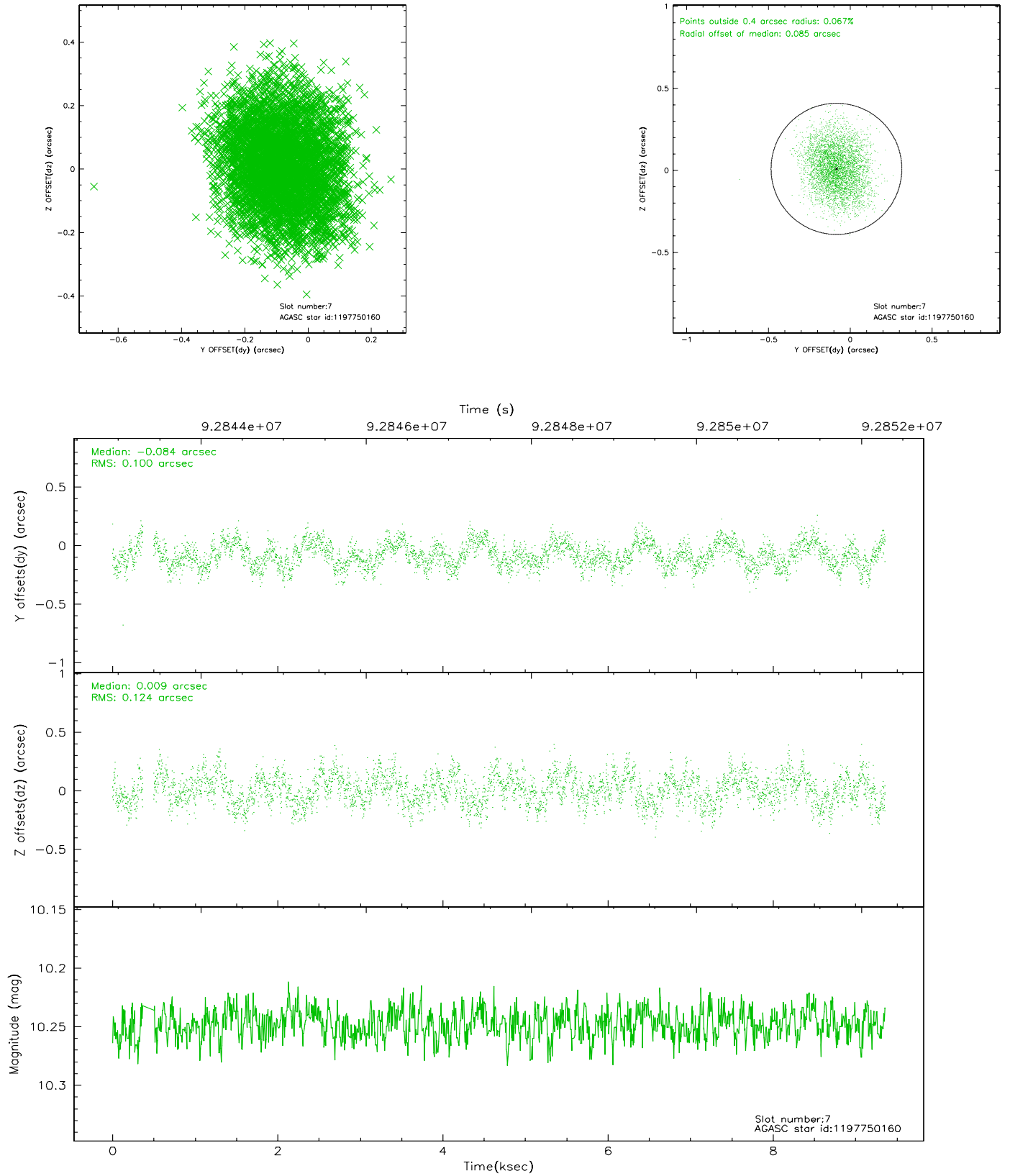
### 2.4.3 Slot 5



## 2.4.4 Slot 6

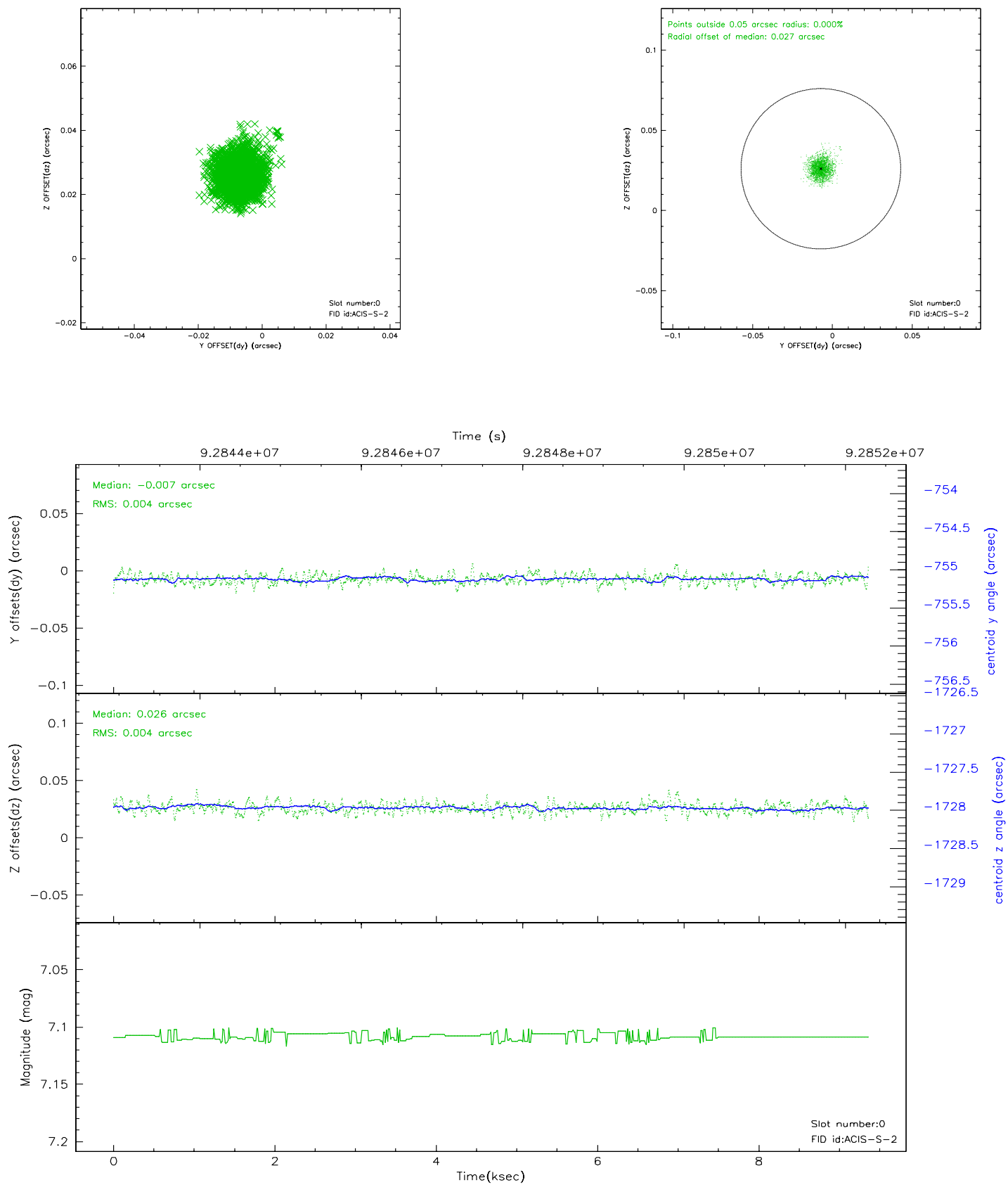


## 2.4.5 Slot 7

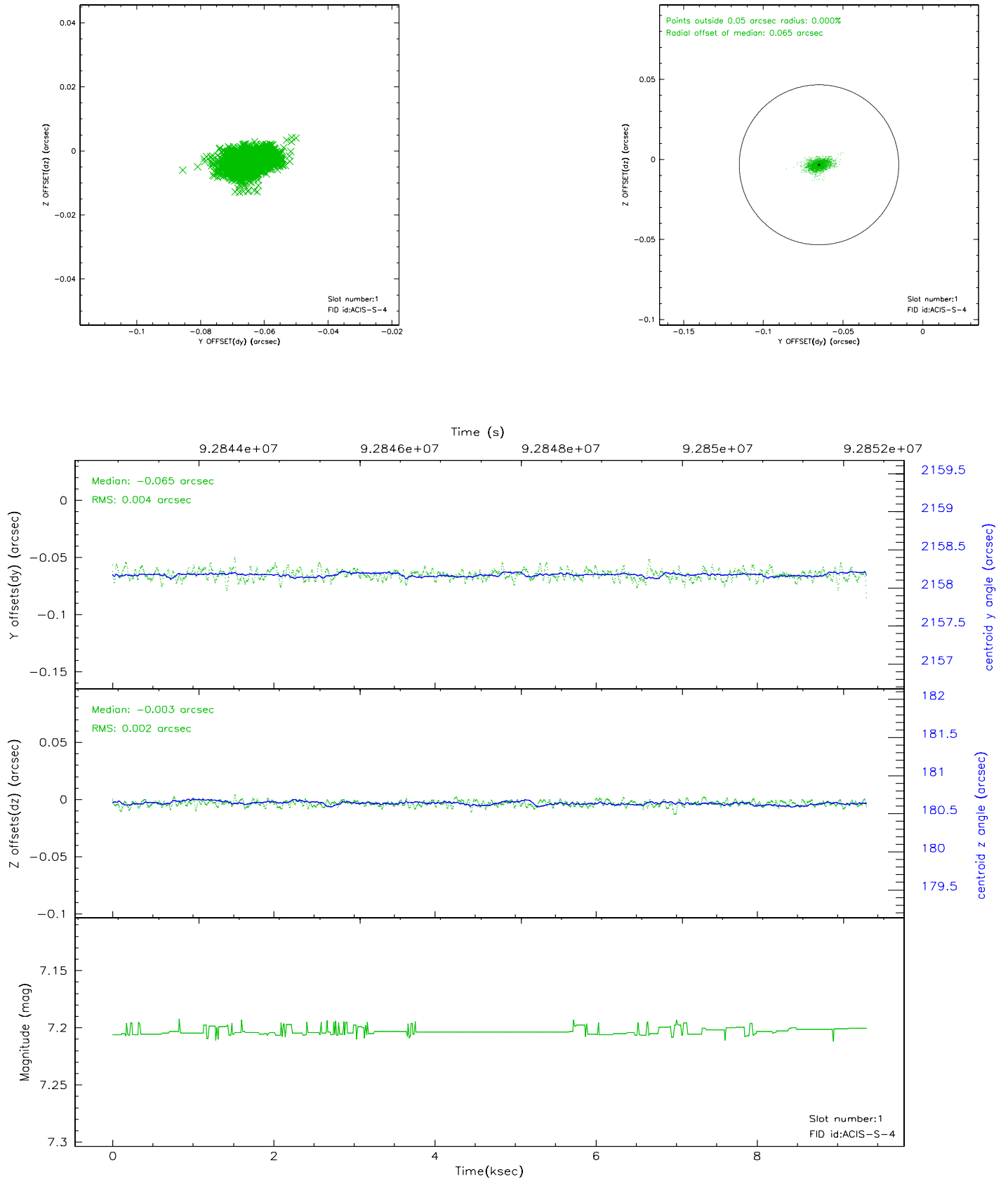


## 2.5 FID Slots

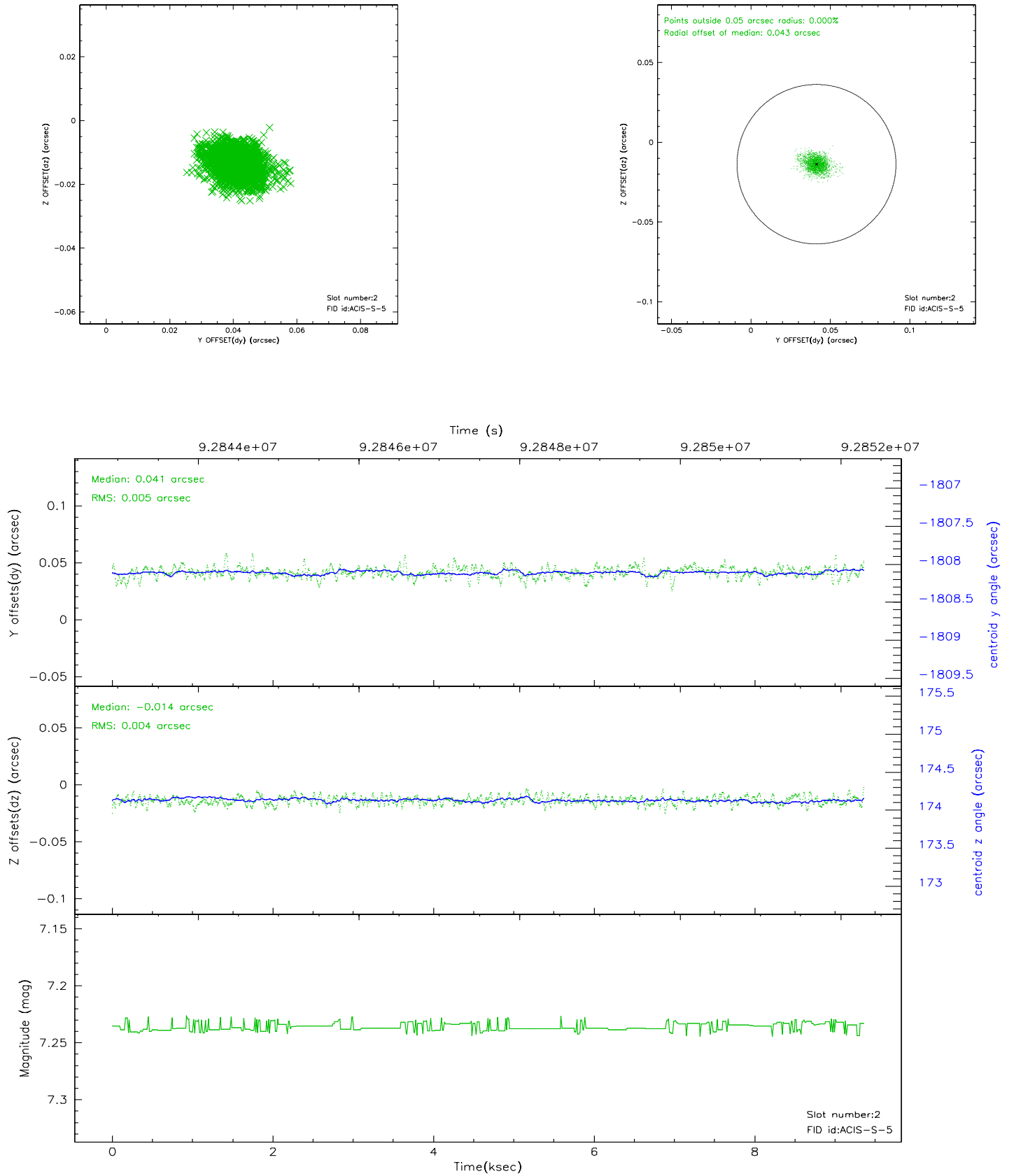
### 2.5.1 Slot 0



## 2.5.2 Slot 1

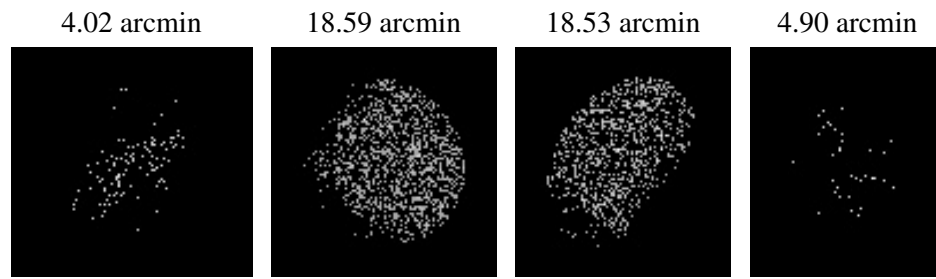


### 2.5.3 Slot 2





### 3 Point Sources



## A Summary

### A.1 Status

V&V Scientist	Beth Sundheim
V&V Date (YYYY-MM-DD)	2007.06.20
V&V Edition	1
V&V Disposition and Status	OK
V&V Charge Time	7.948

### A.2 Comments