

# V&V Reference Report

## L2 ASCDS Version : 8.4.5

Observation 2343 - L2 Version 5  
Chandra X-Ray Center

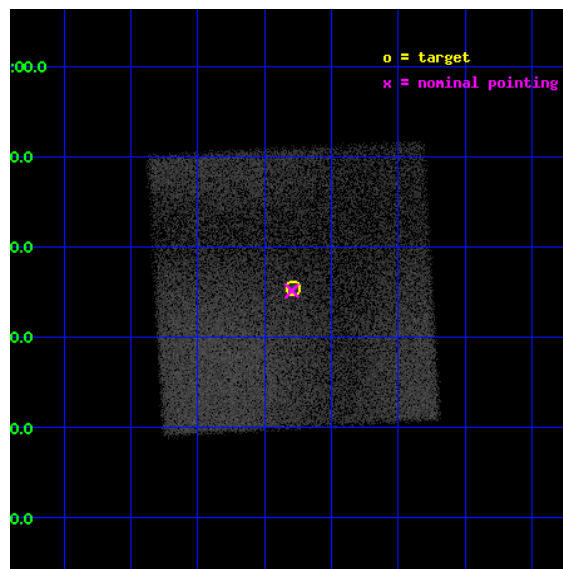
L2 Processing Date : Sep 4 2012

## Contents

<b>1</b>	<b>Front</b>	<b>2</b>
<b>2</b>	<b>OBI</b>	<b>3</b>
2.1	OBI . . . . .	3
2.1.1	Images . . . . .	3
2.1.2	Parameters . . . . .	4
2.1.3	Events . . . . .	4
2.2	Compared Parameters . . . . .	5
2.3	Aspect . . . . .	6
2.4	Star Slots . . . . .	9
2.4.1	Slot 3 . . . . .	9
2.4.2	Slot 4 . . . . .	10
2.4.3	Slot 5 . . . . .	11
2.4.4	Slot 6 . . . . .	12
2.4.5	Slot 7 . . . . .	13
2.5	FID Slots . . . . .	14
2.5.1	Slot 1 . . . . .	14
2.5.2	Slot 2 . . . . .	15
<b>A</b>	<b>Summary</b>	<b>16</b>
A.1	Status . . . . .	16
A.2	Comments . . . . .	16

# 1 Front

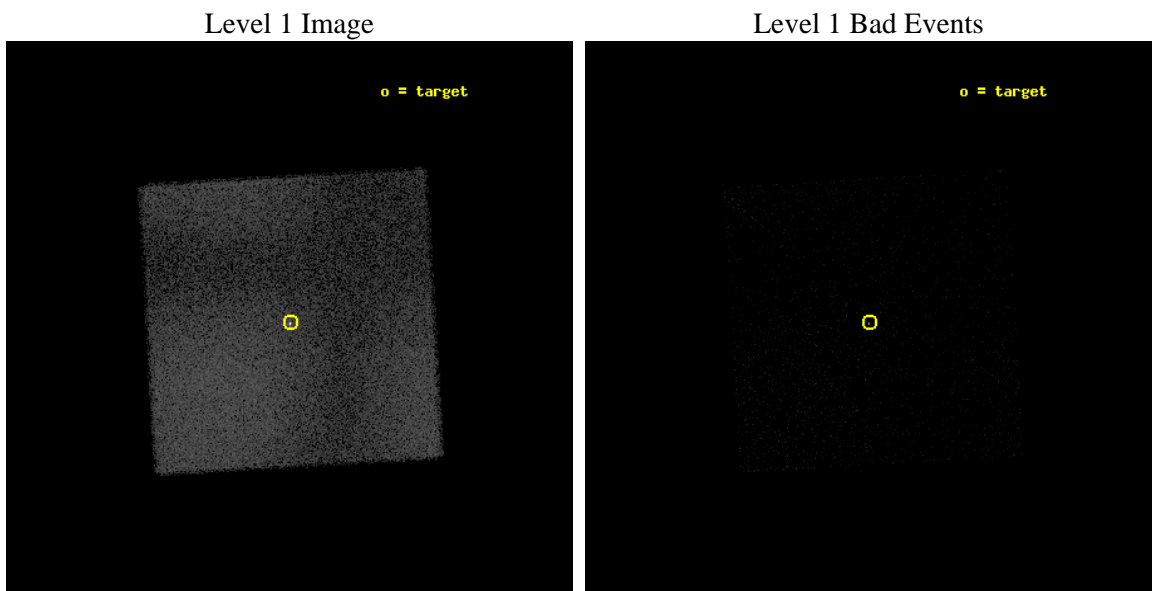
seq_num	390025	Sequence number
obs_id	2343	Observation id
title	HRC-I FOCUS CHECK	Proposal title
observer	Dr. CXC Calibration	Principal investigator
object	HR1099	Source name
ra_targ	54.197083	Observer's specified target RA [deg]
dec_targ	0.589972	Observer's specified target Dec [deg]
ra_nom	54.198646199112	Nominal RA [deg]
dec_nom	0.58537537966282	Nominal Dec [deg]
roll_nom	311.62592619499	Nominal Roll [deg]
revision	5	Processing version of data
ontime	1622.8313120604	[s]
livetime	1611.4541933352	Ontime multiplied by DTCOR
l2events	84626	Number of level 2 events



## 2 OBI

### 2.1 OBI

#### 2.1.1 Images



### 2.1.2 Parameters

obi_num	0	Obi number	sched_exp_time	1421.031000	[s] Scheduled observation exposure time
ascdsver	8.4.5	Processing system revision	ontime	1622.8313120604	[s]
caldbver	4.5.1.1	&#160	l1events	136132	Number of level 1 events
date	2012-09-05T00:50:12	Date and time of file creation			
revision	5	Processing version of data			

### 2.1.3 Events

#### Level 1 Events

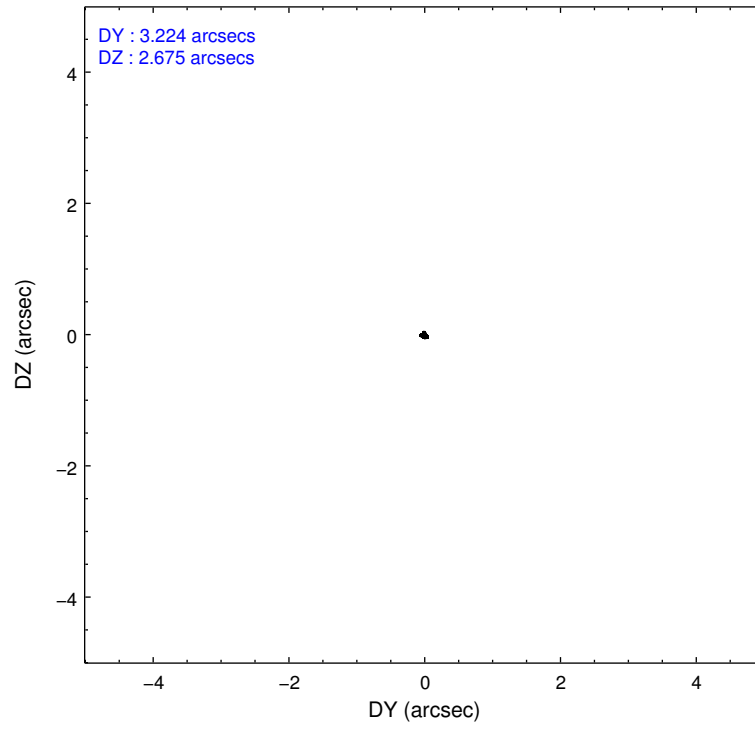
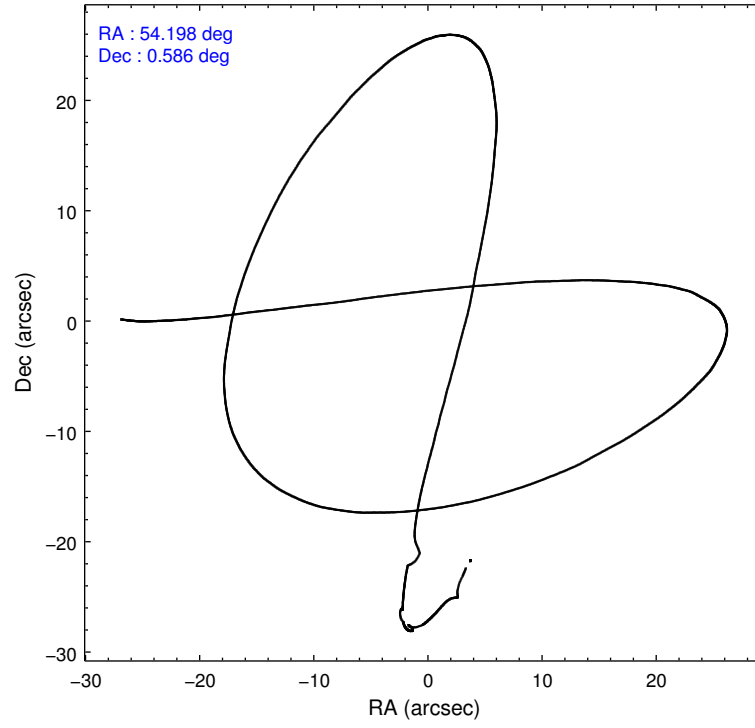
	<b>segment 0</b>
level 1 events	136132
rejected events	21797
rejected %	16%

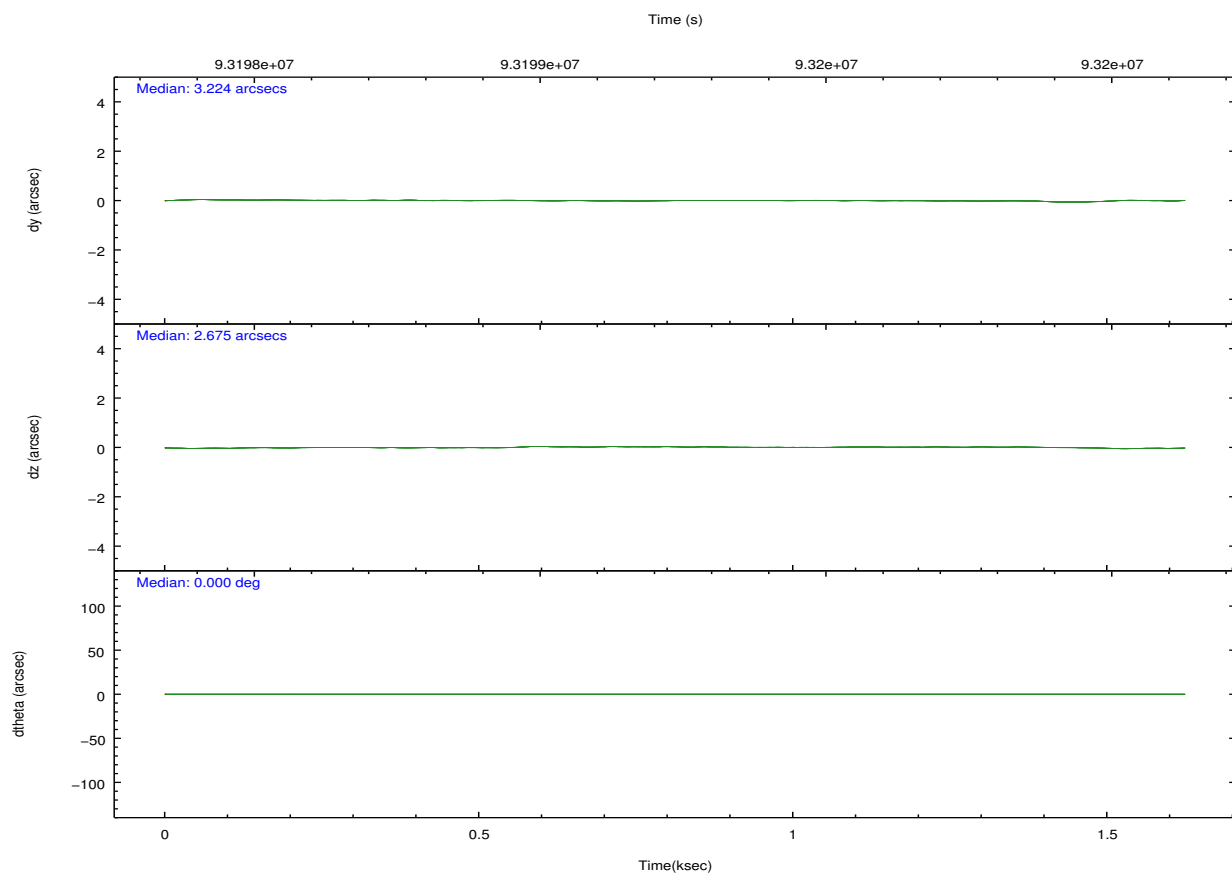
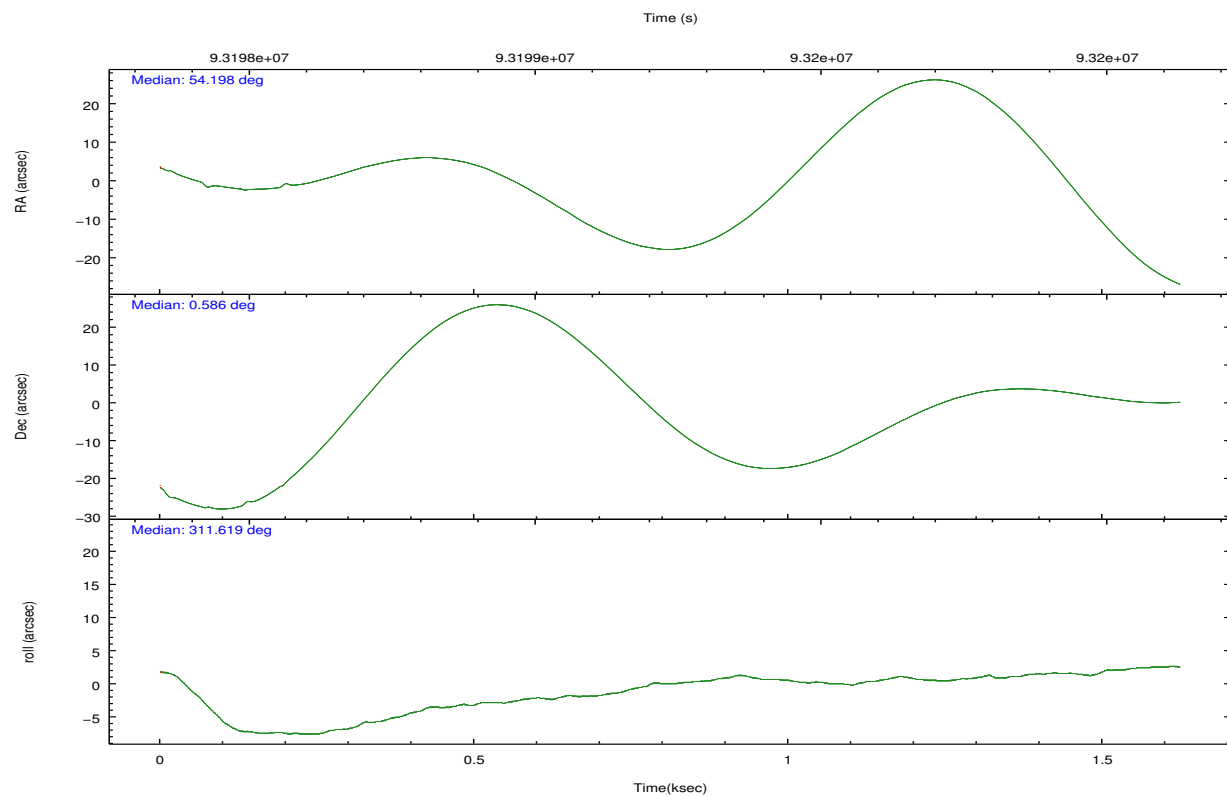
## 2.2 Compared Parameters

Parameter	Planned	Actual
Instrument	HRC	HRC
Detector	HRC-I	HRC-I
Grating	NONE	NONE
Data mode	OBSERVING	OBSERVING
Observation mode	POINTING	POINTING
[deg] Pointing RA	54.172515	54.19864619911184
[deg] Pointing Dec	0.593978	0.5853753796628171
[deg] Pointing Roll	311.721670	311.6259261949896
[s] Window start time (MET)	89424064.184000	89424064.184000
[s] Window stop time (MET)	94521664.184000	94521664.184000
[mm] SIM focus pos	-1.040293	-1.038866356238299
[mm] SIM defocus	0	0.001426264420575141
[mm] SIM translation stage pos	126.985494	126.9804656746847
[mm] SIM translation stage offset	0	0.005023216916882234
[s] Observation start time (MET)	93198628.184000	93198251.731519
Observation start date	2000-12-14T16:29:24	2000-12-14T16:24:11
[s] Observation end time (MET)	93200049.184000	93200363.74409901
Observation end date	2000-12-14T16:53:05	2000-12-14T16:59:23

Parameter	Planned	Actual
Obspar format version number	7	7
Obspar file type	PREDICTED	ACTUAL
Obspar update status	NONE	UPDATED

## 2.3 Aspect





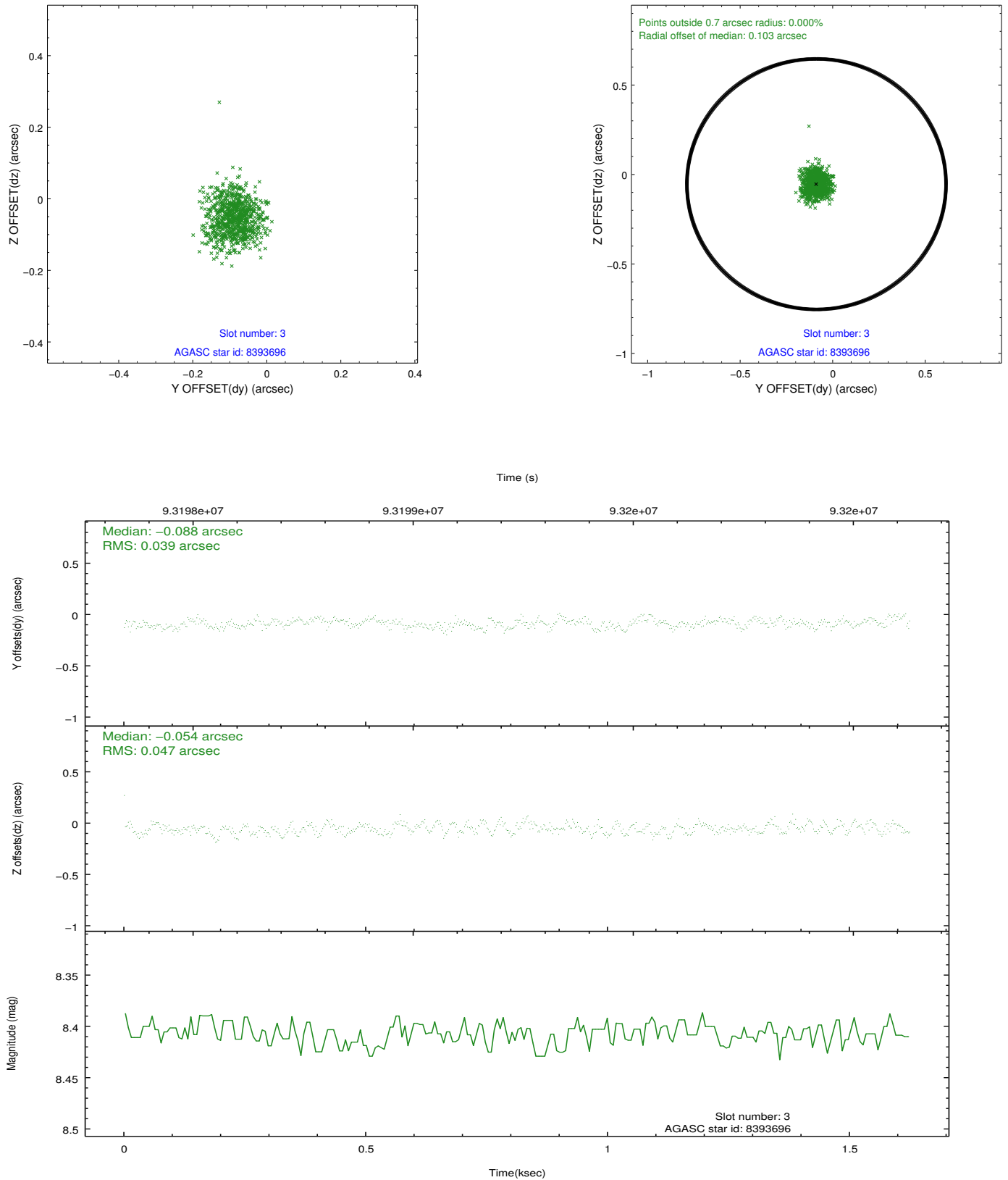
### Slot Statistics

slot	status	id	mag	n_pts	med_dy	med_dz	dr1	dr2	ra	dec	mean_y	mean_z
0	UNUSED		0.00	0	0.000	0.000	0.000	0.000	0.000000	0.000000	0.00	0.00
1	FID	HRC-I-3	7.04	395	0.040	-0.027	0.000	0.000	0.000000	0.000000	-1187.29	1014.01
2	BAD	HRC-I-4	6.97	34	0.049	-0.533	0.023	0.048	0.000000	0.000000	1249.04	1041.33
3	GUIDE	8393696	8.41	793	-0.088	-0.054	0.066	0.099	53.645666	0.680479	-1494.98	-1207.56
4	GUIDE	8398800	8.70	793	-0.018	0.056	0.069	0.109	54.242352	0.922024	-716.57	972.96
5	GUIDE	8395104	8.67	793	-0.021	0.057	0.084	0.135	54.744893	0.796520	825.40	2025.51
6	GUIDE	8390744	9.02	793	-0.044	0.062	0.070	0.113	53.677290	0.926294	-2078.66	-530.97
7	GUIDE	618141232	8.99	791	0.185	-0.113	0.094	0.158	54.173459	-0.292336	2381.25	-2120.65

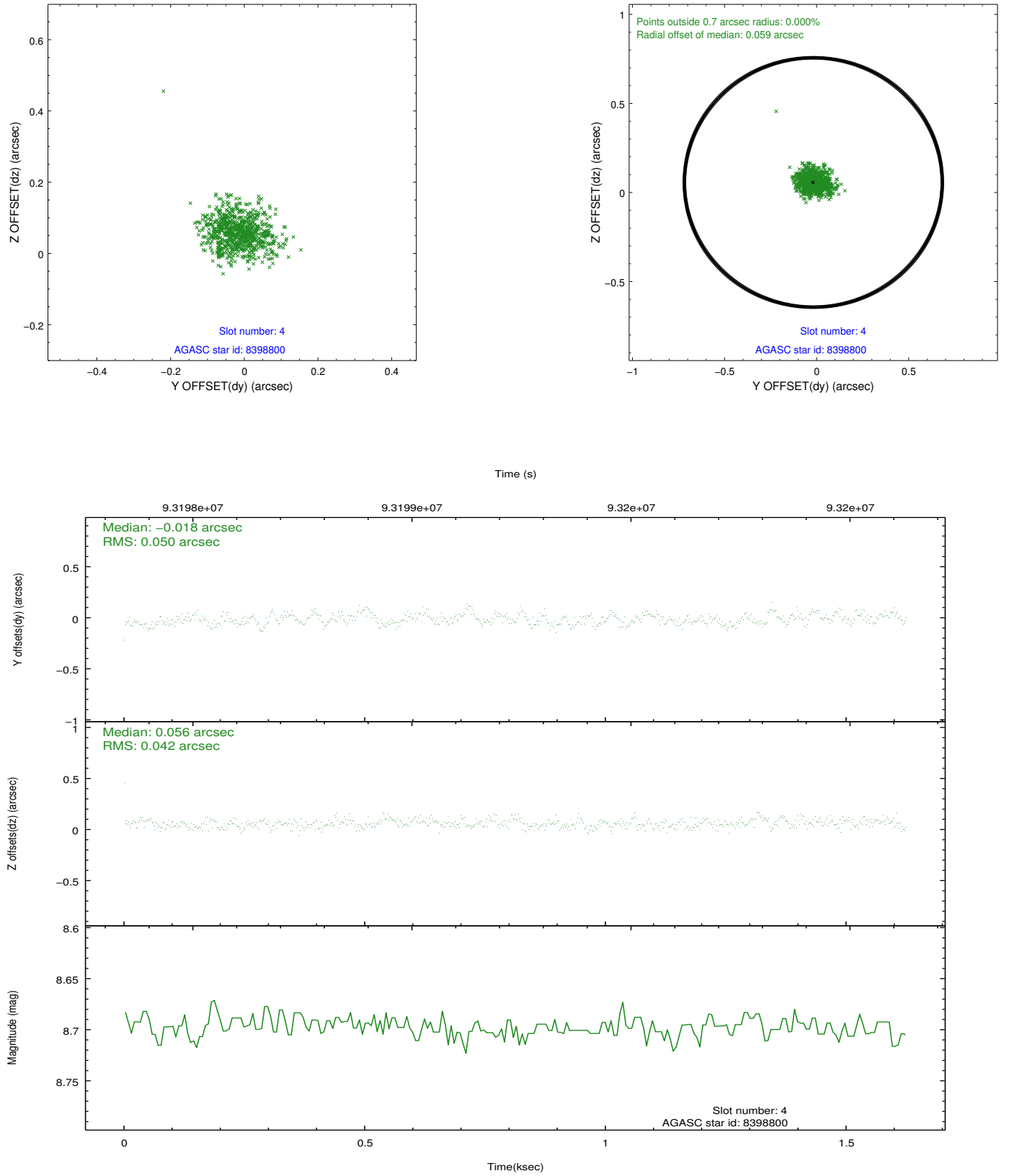


## 2.4 Star Slots

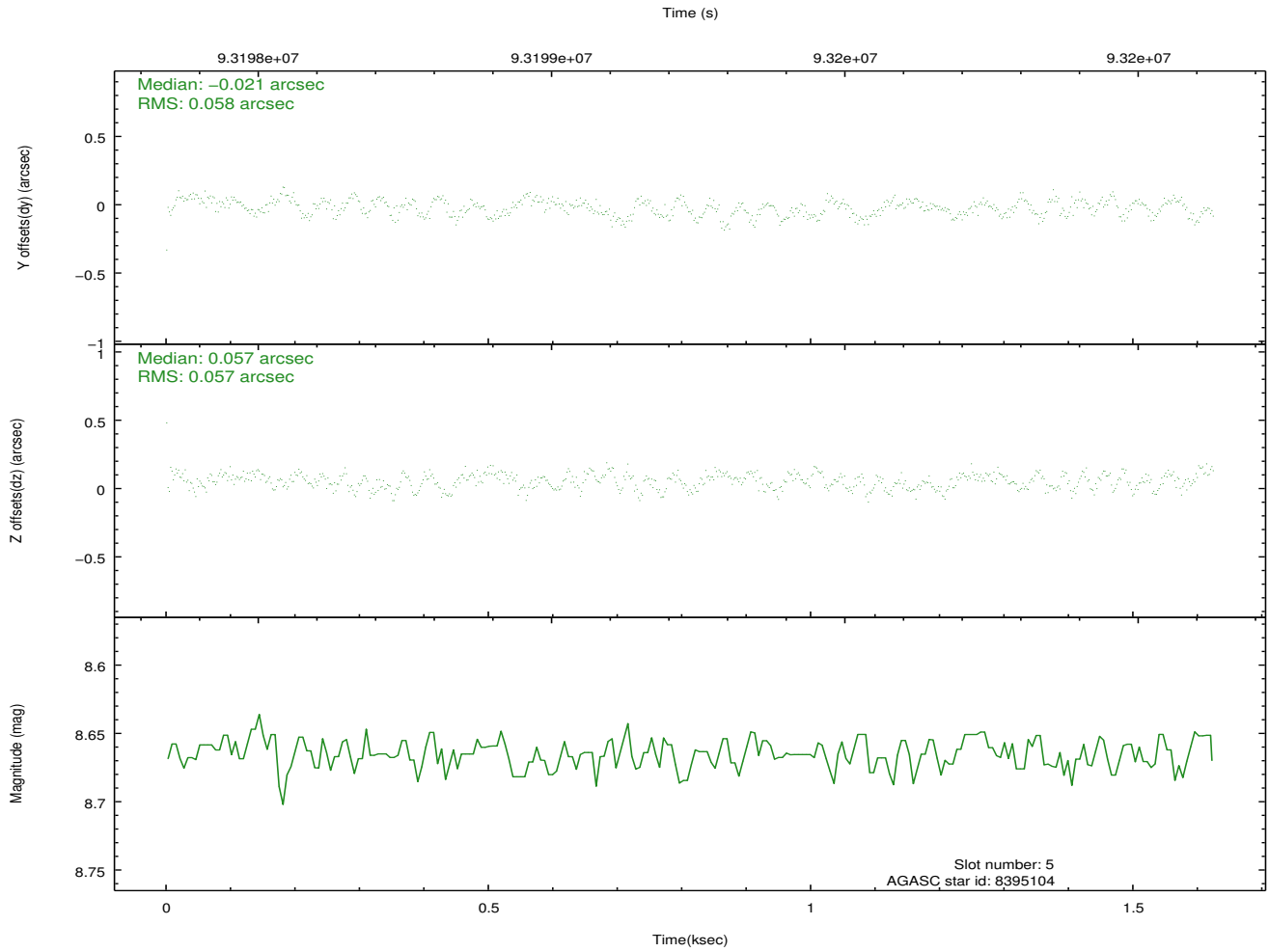
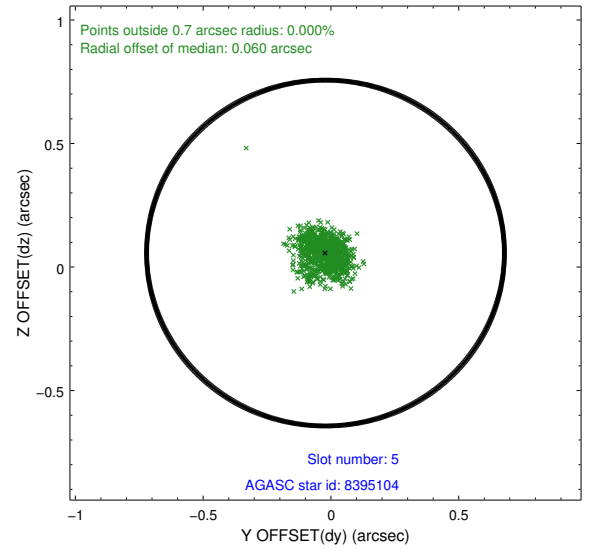
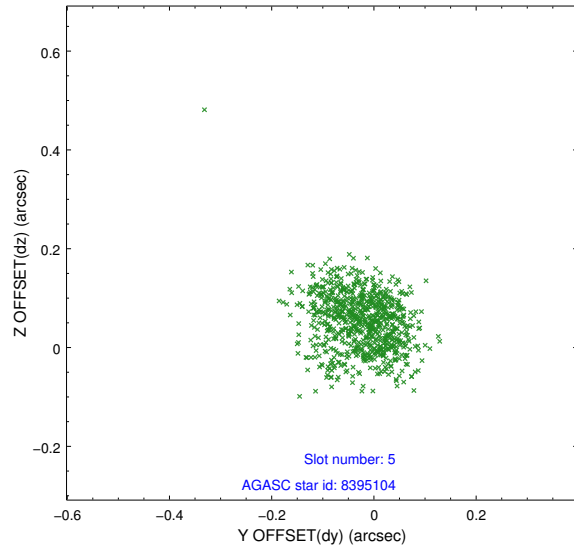
### 2.4.1 Slot 3



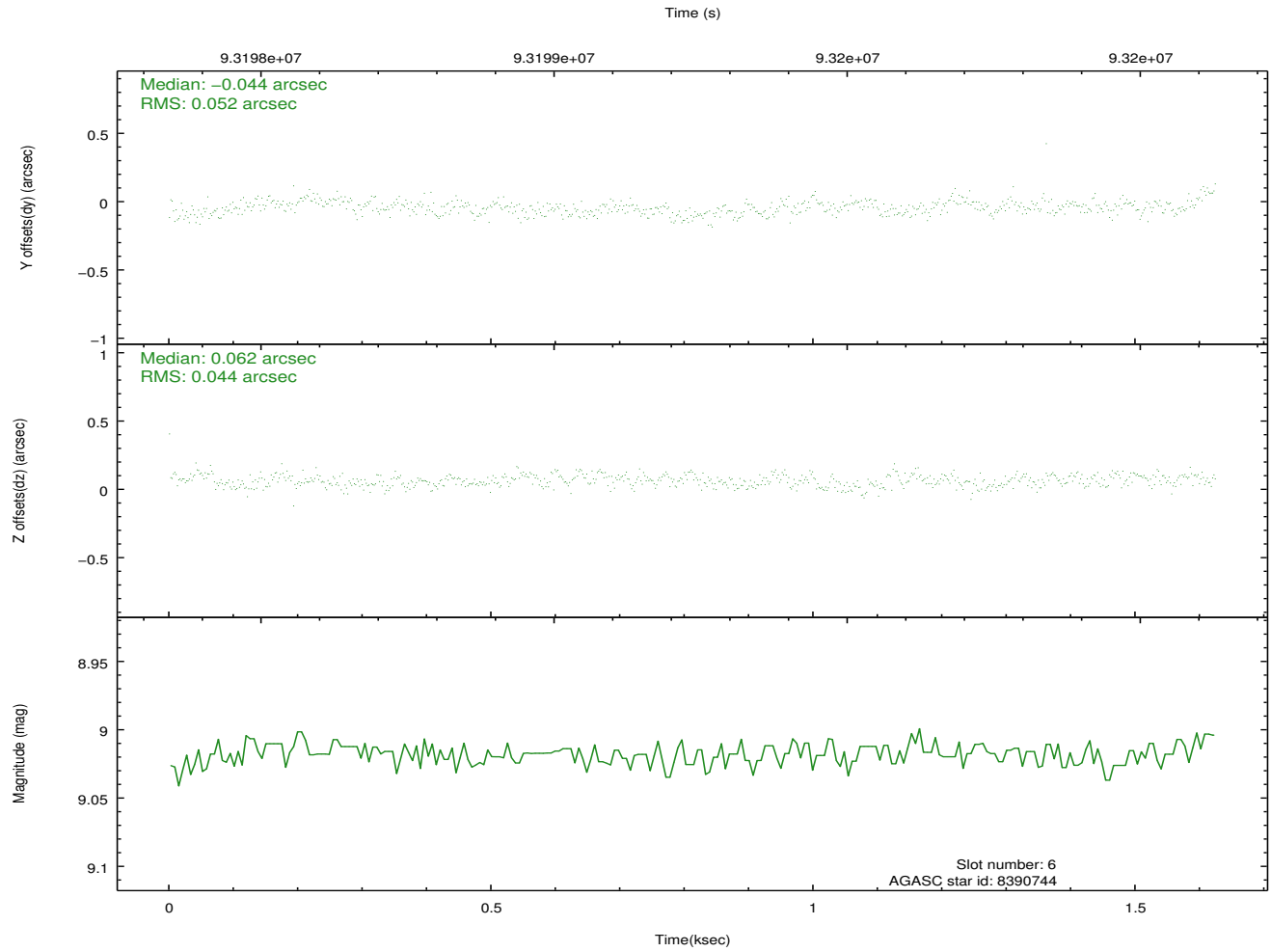
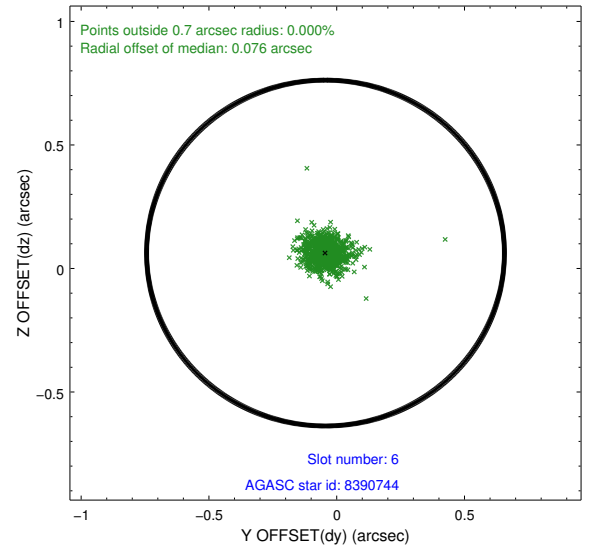
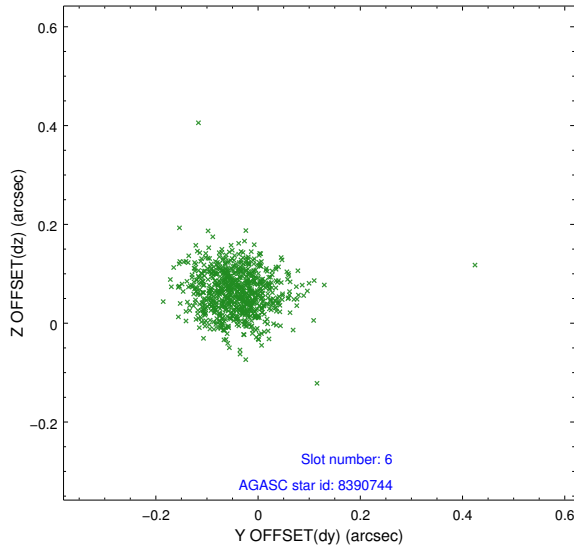
## 2.4.2 Slot 4



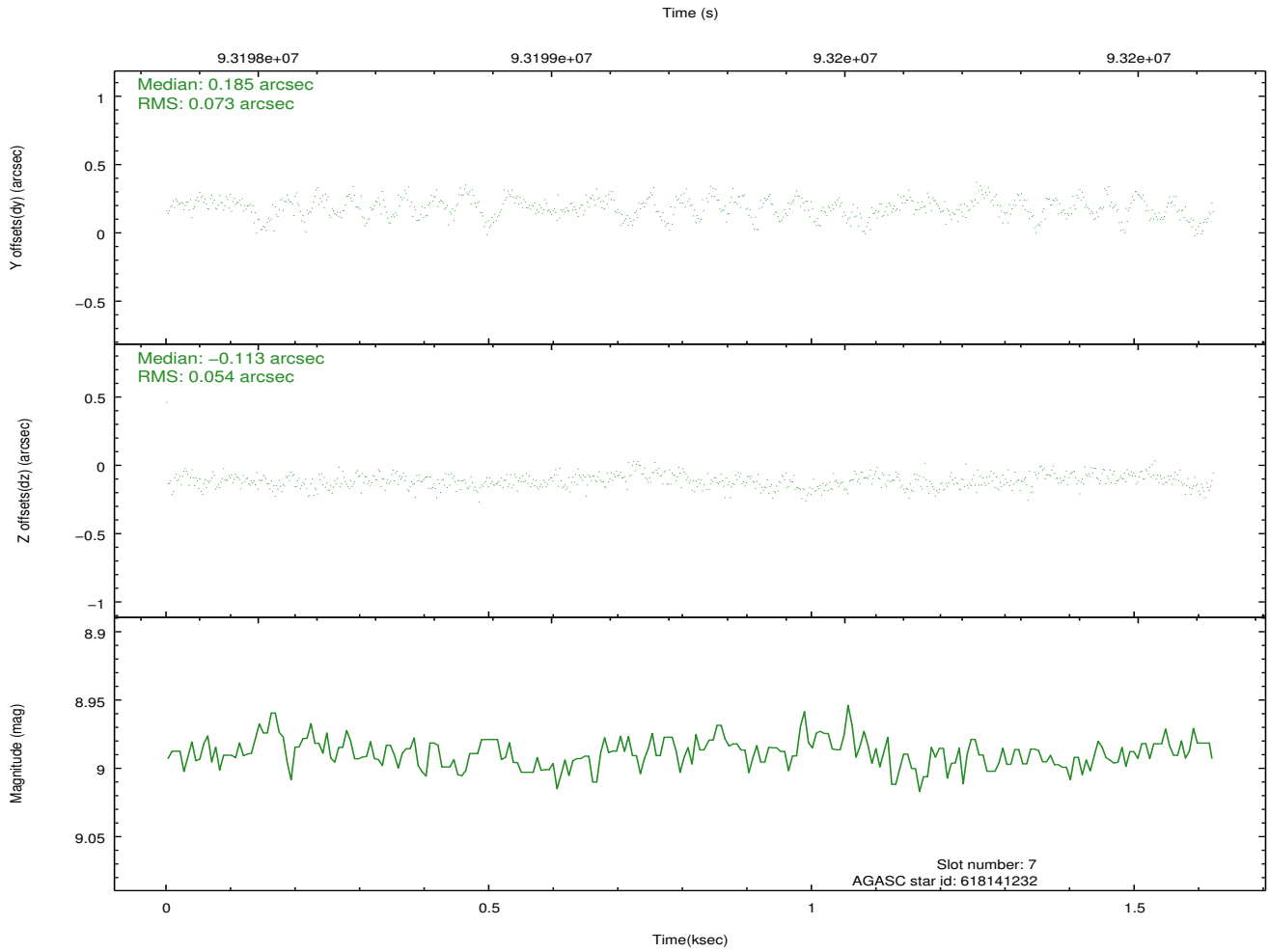
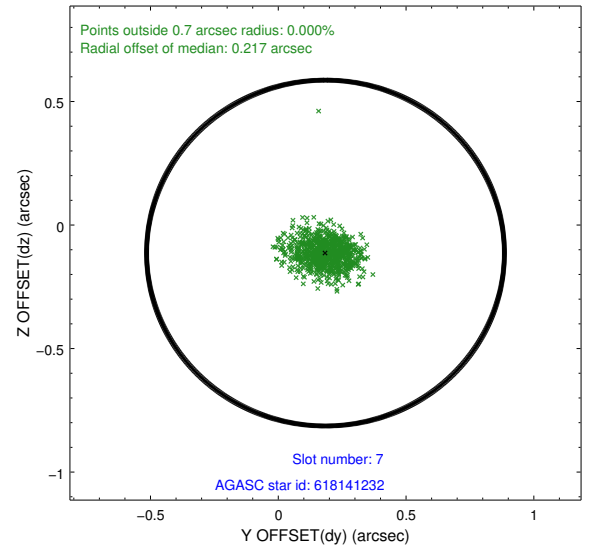
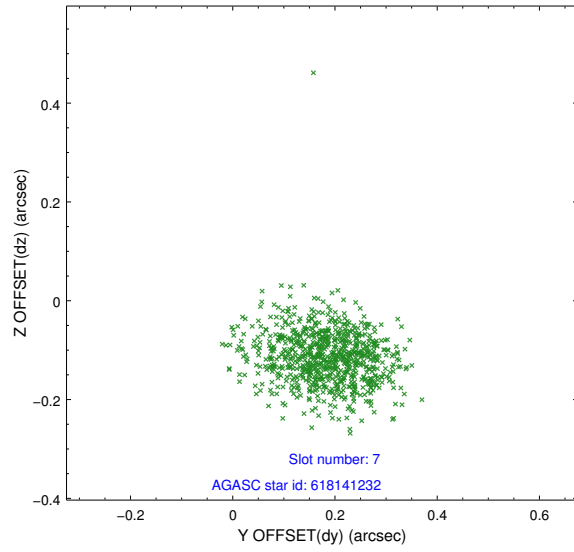
### 2.4.3 Slot 5



## 2.4.4 Slot 6

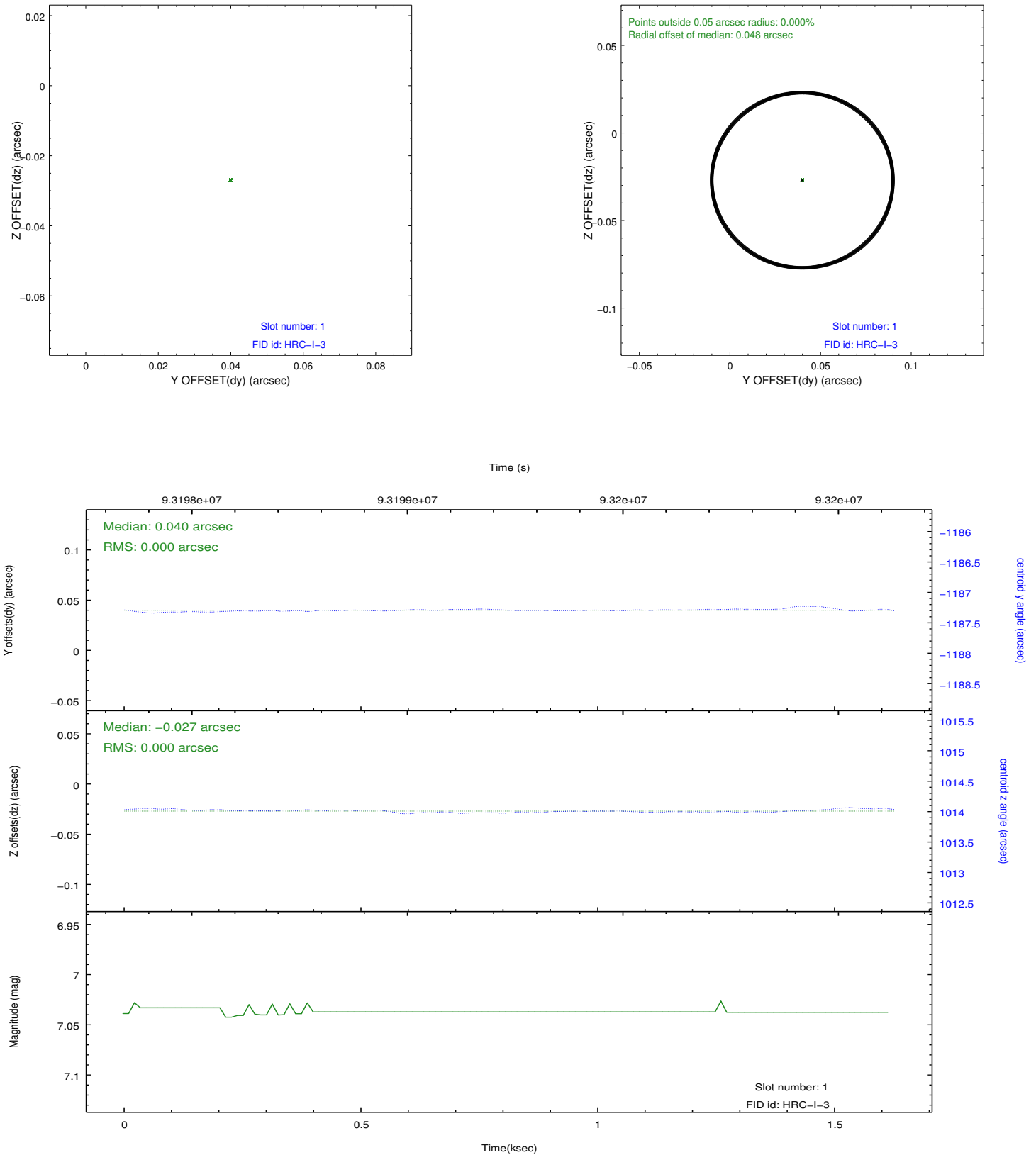


## 2.4.5 Slot 7

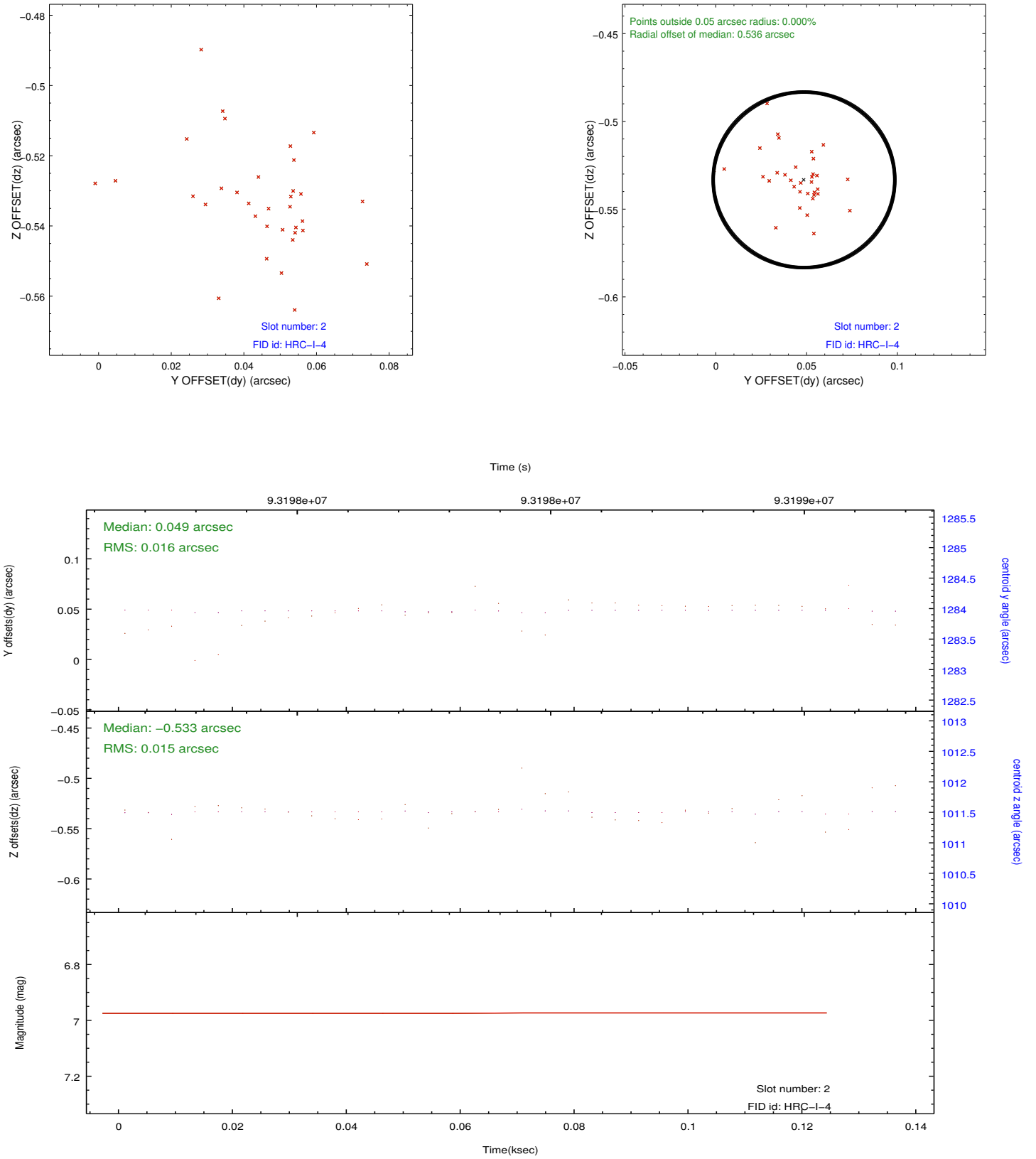


## 2.5 FID Slots

### 2.5.1 Slot 1



## 2.5.2 Slot 2



# A Summary

## A.1 Status

V&V Scientist	Jen Lauer
V&V Date (YYYY-MM-DD)	2012.09.18
V&V Edition	1
V&V Disposition and Status	OK
V&V Charge Time	1.62

## A.2 Comments

The fid light in slot 2 was removed from the aspect solution due to poor data quality: it was only tracked 8.81% of the observation. The fid light in slot 0 was unused. There is only one usable fid for this observation, and it will not be improved by reprocessing. Window constraint met.