

V&V Reference Report

L2 ASCDS Version : 8.4.5

Observation 1794 - L2 Version 9
Chandra X-Ray Center

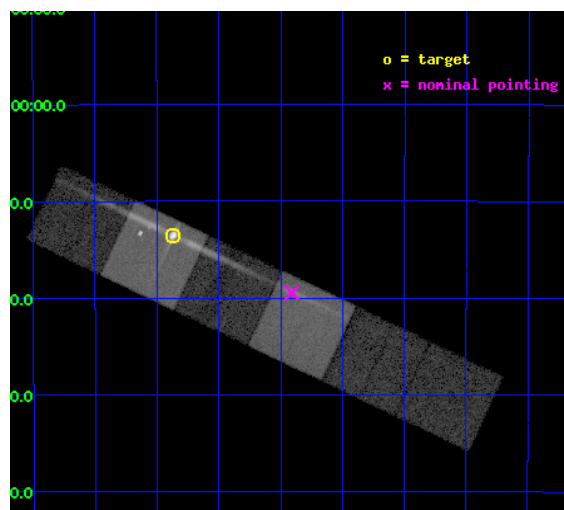
L2 Processing Date : Jan 9 2013

Contents

1	Front	2
2	OBI	3
2.1	OBI	3
2.1.1	Images	3
2.1.2	Bias	3
2.1.3	Parameters	4
2.1.4	Events	4
2.2	Compared Parameters	5
2.3	Aspect	6
2.4	Star Slots	9
2.4.1	Slot 3	9
2.4.2	Slot 4	10
2.4.3	Slot 5	11
2.4.4	Slot 6	12
2.4.5	Slot 7	13
2.5	FID Slots	14
2.5.1	Slot 0	14
2.5.2	Slot 1	15
2.5.3	Slot 2	16
3	Gratings	17
3.1	LETG Arm	17
A	Summary	19
A.1	Status	19
A.2	Comments	19

1 Front

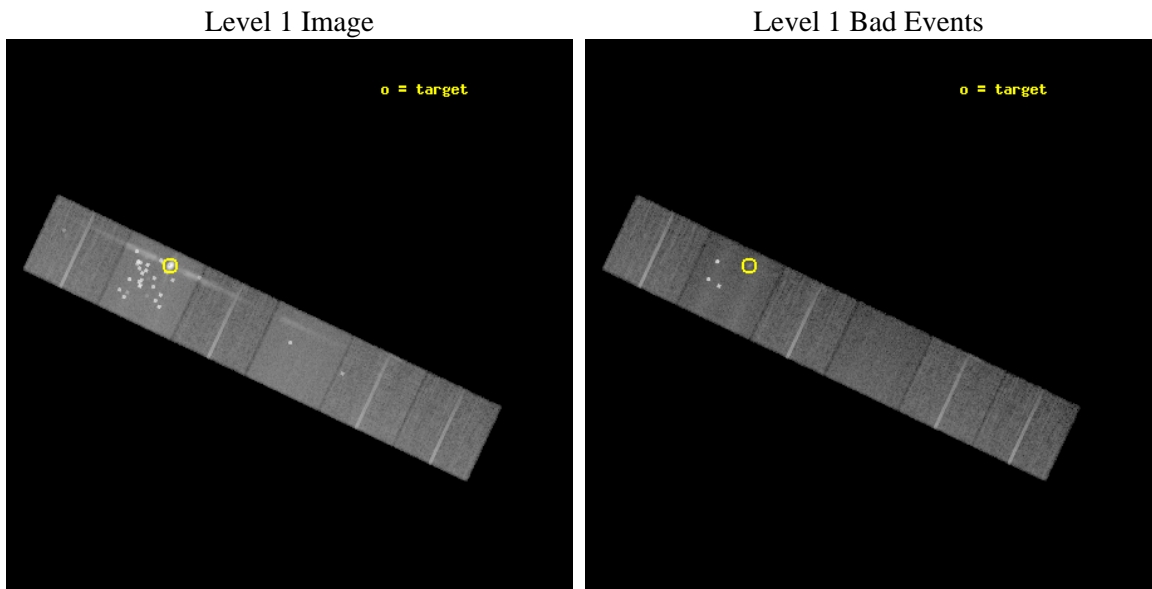
seq_num	390012	Sequence number
obs_id	1794	Observation id
title	GRATINGS CALIBRATION OBSERVATIONS OF PKS2155-304	Proposal title
observer	Dr. CXC Calibration	Principal investigator
object	PKS2155-304	Source name
dtcycle	0	
cycle	P	events from which exps? Prim/Second/Both
ra_targ	329.716667	Observer's specified target RA [deg]
dec_targ	-30.225556	Observer's specified target Dec [deg]
ra_nom	329.4774750894	Nominal RA [deg]
dec_nom	-30.32457315319	Nominal Dec [deg]
roll_nom	25.261647347543	Nominal Roll [deg]
revision	9	Processing version of data
ontime	21158.40001969	Sum of GTIs [s]
livetime	20890.479618582	Livetime [s]
ontime4	21158.40001969	Sum of GTIs [s]
ontime5	21158.40001969	Sum of GTIs [s]
ontime6	21158.40001969	Sum of GTIs [s]
ontime7	21158.40001969	Sum of GTIs [s]
ontime8	21155.159029543	Sum of GTIs [s]
ontime9	21155.159029543	Sum of GTIs [s]
l2events	263280	Number of level 2 events



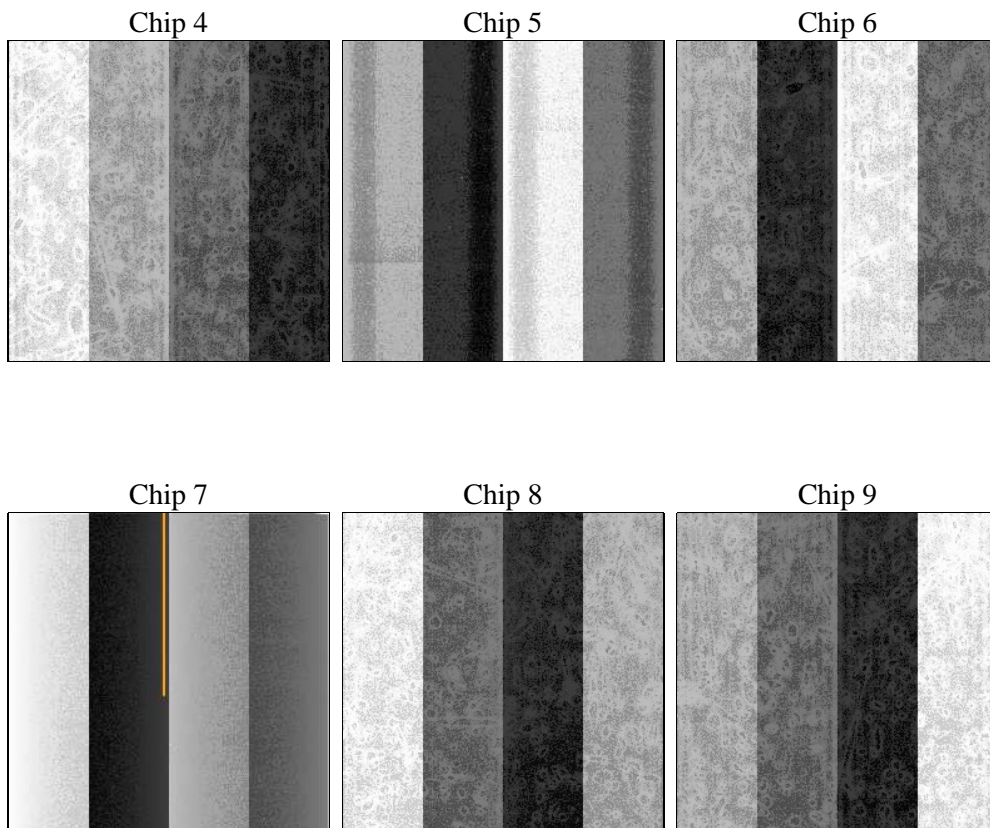
2 OBI

2.1 OBI

2.1.1 Images



2.1.2 Bias



2.1.3 Parameters

obi_num	0	Obi number	sched_exp_time	21400.000000	[s] Scheduled observation exposure time
ascdsver	8.4.5	Processing system revision	ontime	21158.40001969	Sum of GTIs [s]
caldsver	4.5.1.1	 	ontime4	21158.40001969	Sum of GTIs [s]
date	2012-08-31T14:29:21	Date and time of file creation	ontime5	21158.40001969	Sum of GTIs [s]
revision	5	Processing version of data	ontime6	21158.40001969	Sum of GTIs [s]
			ontime7	21158.40001969	Sum of GTIs [s]
			ontime8	21155.159029543	Sum of GTIs [s]
			ontime9	21155.159029543	Sum of GTIs [s]
			l1events	1051742	Number of level 1 events

2.1.4 Events

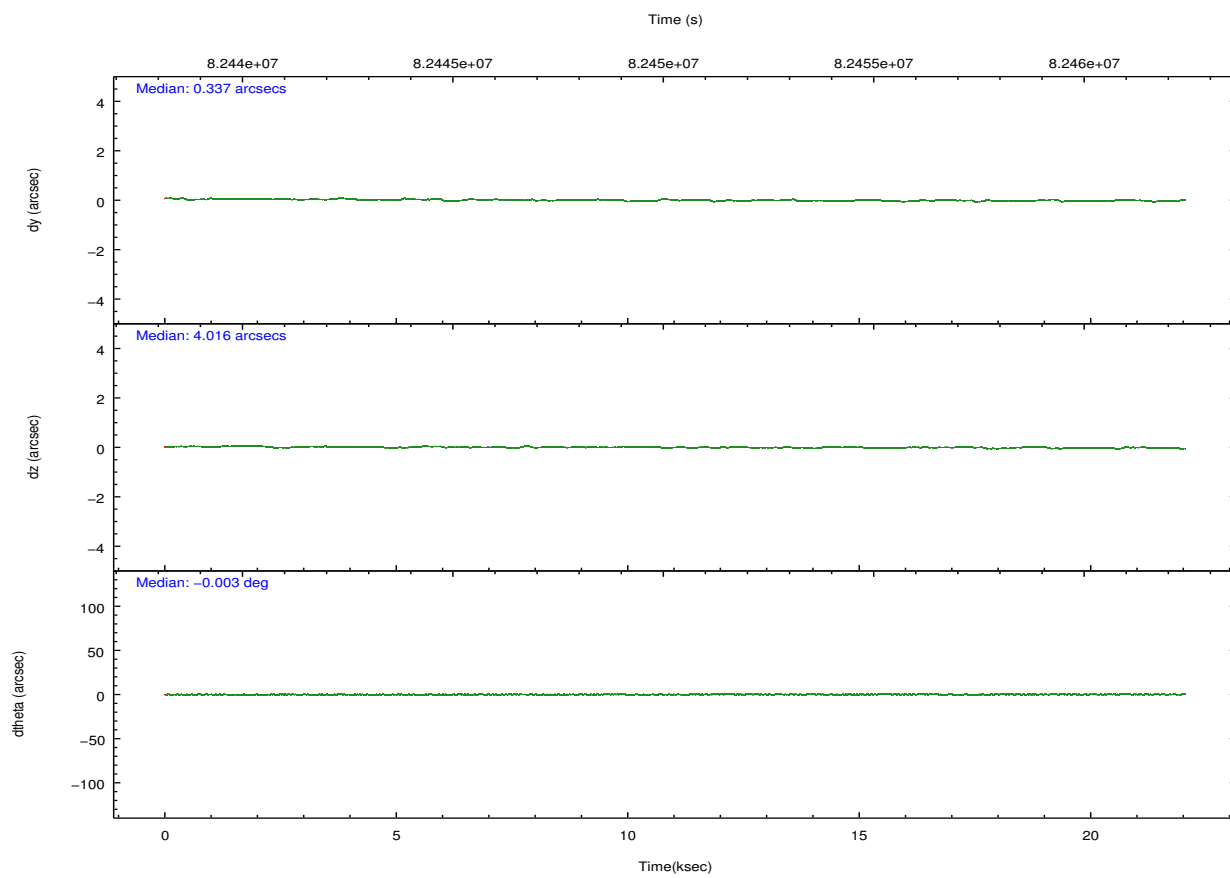
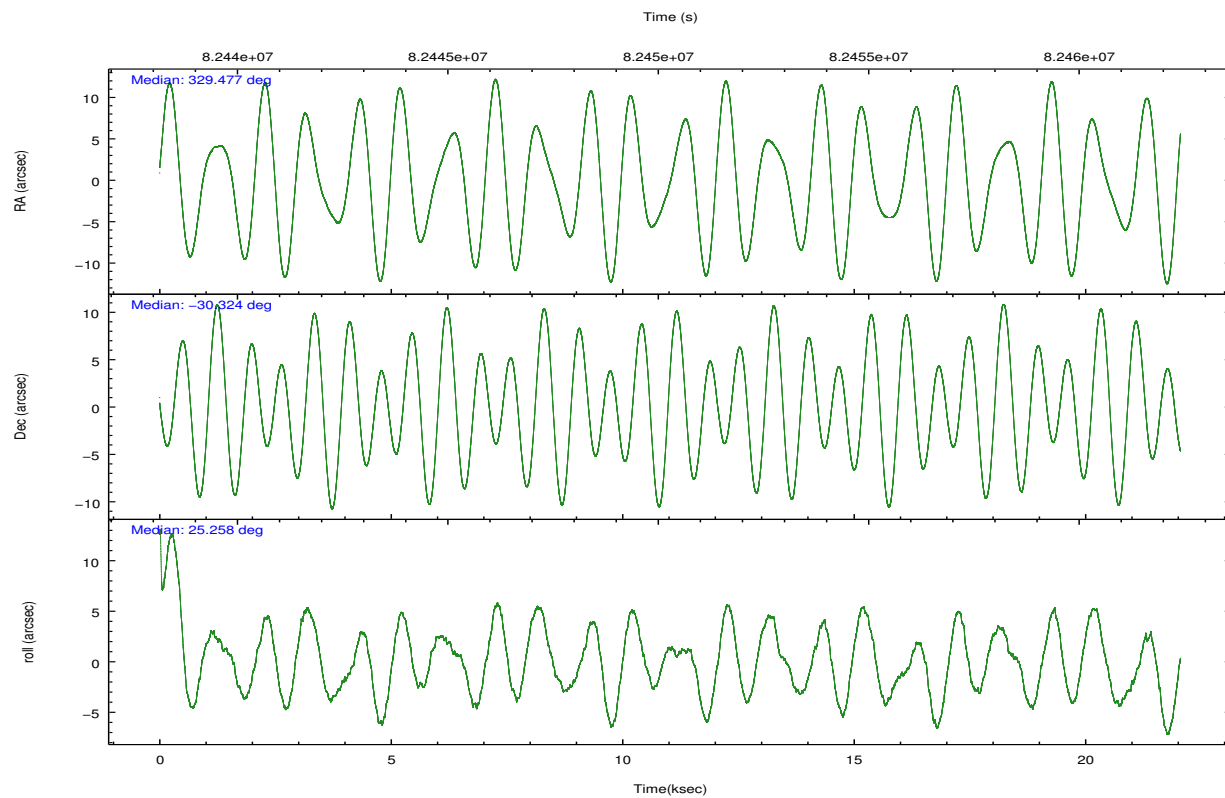
	ccd 4	ccd 5	ccd 6	ccd 7	ccd 8	ccd 9		ccd 4	ccd 5	ccd 6	ccd 7	ccd 8	ccd 9
level 1 events	140152	356106	125873	163084	148257	118270	grade 0 events	5662	127077	8376	11440	8866	3348
rejected events	122540	111309	105722	88418	118445	103646		4%	35%	6%	7%	5%	2%
rejected %	87%	31%	83%	54%	79%	87%	grade 1 events	36	245	31	72	57	16
								0%	0%	0%	0%	0%	0%
							grade 2 events	7062	41779	6372	14925	9293	6044
								5%	11%	5%	9%	6%	5%
							grade 3 events	757	9779	934	4109	2230	819
								0%	2%	0%	2%	1%	0%
							grade 4 events	726	7807	869	3912	1968	832
								0%	2%	0%	2%	1%	0%
							grade 5 events	2493	14719	3096	8795	4157	3126
								1%	4%	2%	5%	2%	2%
							grade 6 events	3406	58375	3602	40291	7457	3582
								2%	16%	2%	24%	5%	3%
							grade 7 events	120010	96325	102593	79540	114229	100503
								85%	27%	81%	48%	77%	84%

2.2 Compared Parameters

Parameter	Planned	Actual
Instrument	ACIS	ACIS
Detector	ACIS-456789	ACIS-456789
Grating	LETG	LETG
Data mode	FAINT	FAINT
Observation mode	POINTING	POINTING
[deg] Pointing RA	329.459541	329.4774750894015
[deg] Pointing Dec	-30.347163	-30.3245731531896
[deg] Pointing Roll	25.095959	25.26164734754287
[mm] SIM focus pos	-0.684267	-0.6828225247311905
[mm] SIM defocus	0	0.001444936568705701
[mm] SIM translation stage pos	-182.131972	-182.1344861297048
[mm] SIM translation stage offset	-8.000551	-7.998036453302973
[s] Observation start time (MET)	82439456.184000	82439076.93731301
Observation start date	2000-08-12T03:49:52	2000-08-12T03:44:36
[s] Observation end time (MET)	82460856.184000	82461619.25065599
Observation end date	2000-08-12T09:46:32	2000-08-12T10:00:19
Read mode	TIMED	TIMED

Parameter	Planned	Actual
Obspar format version number	7	7
Obspar file type	PREDICTED	ACTUAL
Obspar update status	NONE	UPDATED
Number of optional ACIS chips dropped	0	0
On-chip summing requested	N	N
Subarray requested	NONE	NONE
Alternating exposures requested	N	N
[s] Primary exposure time	0.000000	3.2

2.3 Aspect

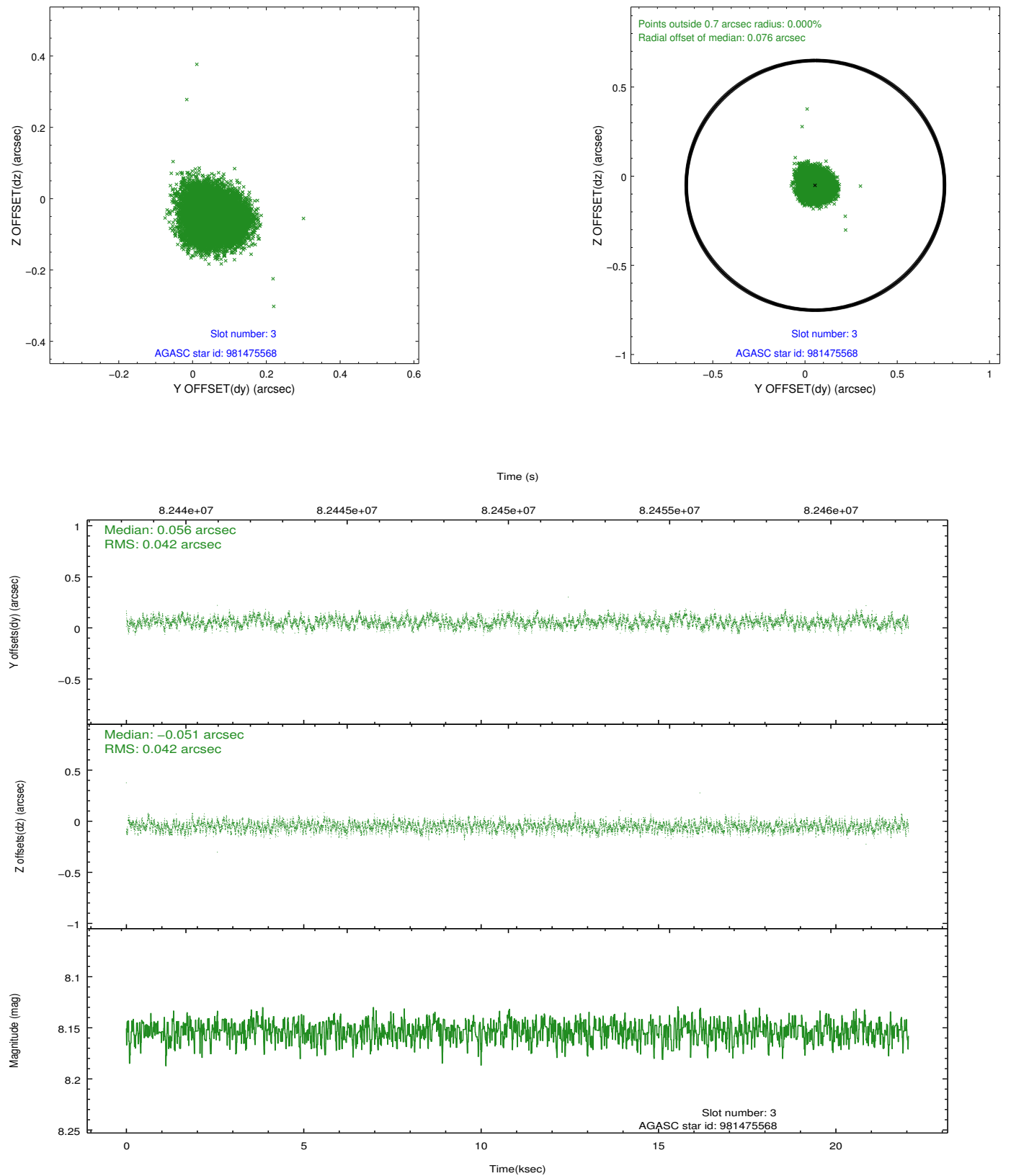


Slot Statistics

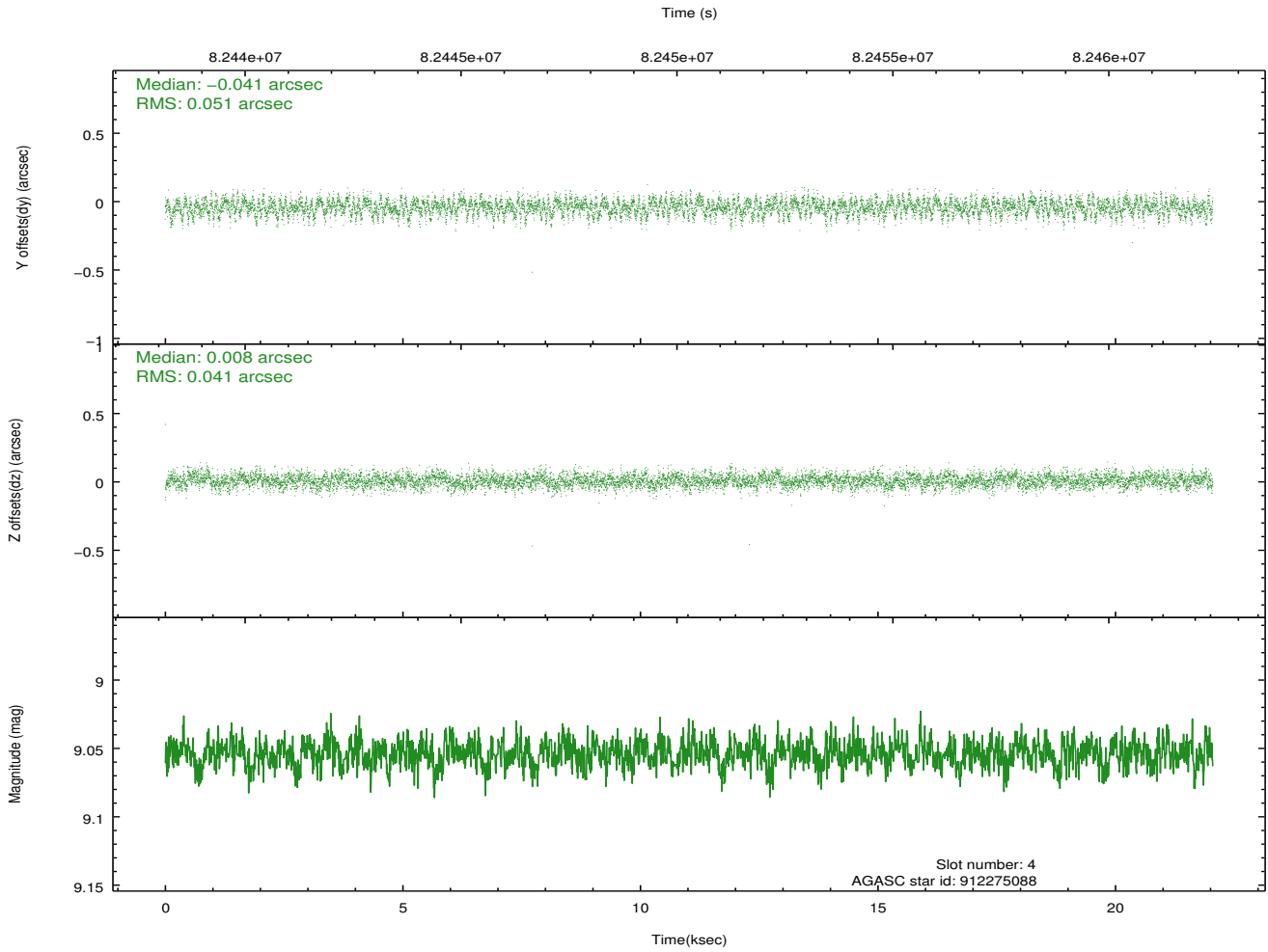
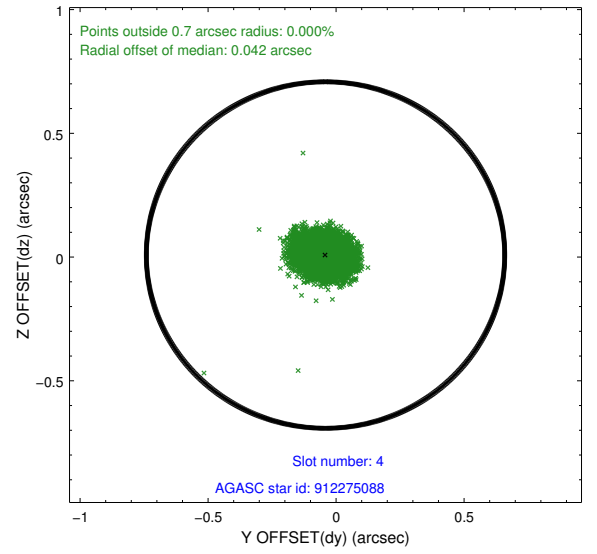
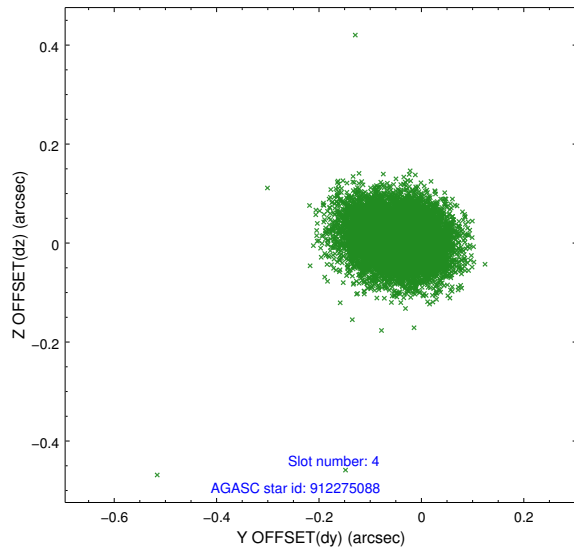
slot	status	id	mag	n_pts	med_dy	med_dz	dr1	dr2	ra	dec	mean_y	mean_z
0	FID	ACIS-S-2	7.10	5376	-0.060	-0.110	0.007	0.012	0.000000	0.000000	-752.42	-1889.96
1	FID	ACIS-S-4	7.18	5378	0.087	0.059	0.005	0.011	0.000000	0.000000	2160.96	18.44
2	FID	ACIS-S-5	7.23	5379	-0.058	0.059	0.007	0.012	0.000000	0.000000	-1805.03	12.35
3	GUIDE	981475568	8.15	10754	0.056	-0.051	0.064	0.099	328.999408	-30.923402	-2167.40	-1279.75
4	GUIDE	912275088	9.05	10754	-0.041	0.008	0.069	0.113	329.619228	-29.738698	1381.09	1770.68
5	GUIDE	981478504	9.39	10749	-0.109	-0.006	0.085	0.137	329.103554	-31.216754	-2320.54	-2372.78
6	GUIDE	981478152	9.39	10726	0.003	0.074	0.088	0.143	329.415589	-30.057192	318.89	1002.32
7	GUIDE	981468128	9.36	10752	0.093	-0.024	0.070	0.115	329.756350	-30.158334	1125.05	221.82

2.4 Star Slots

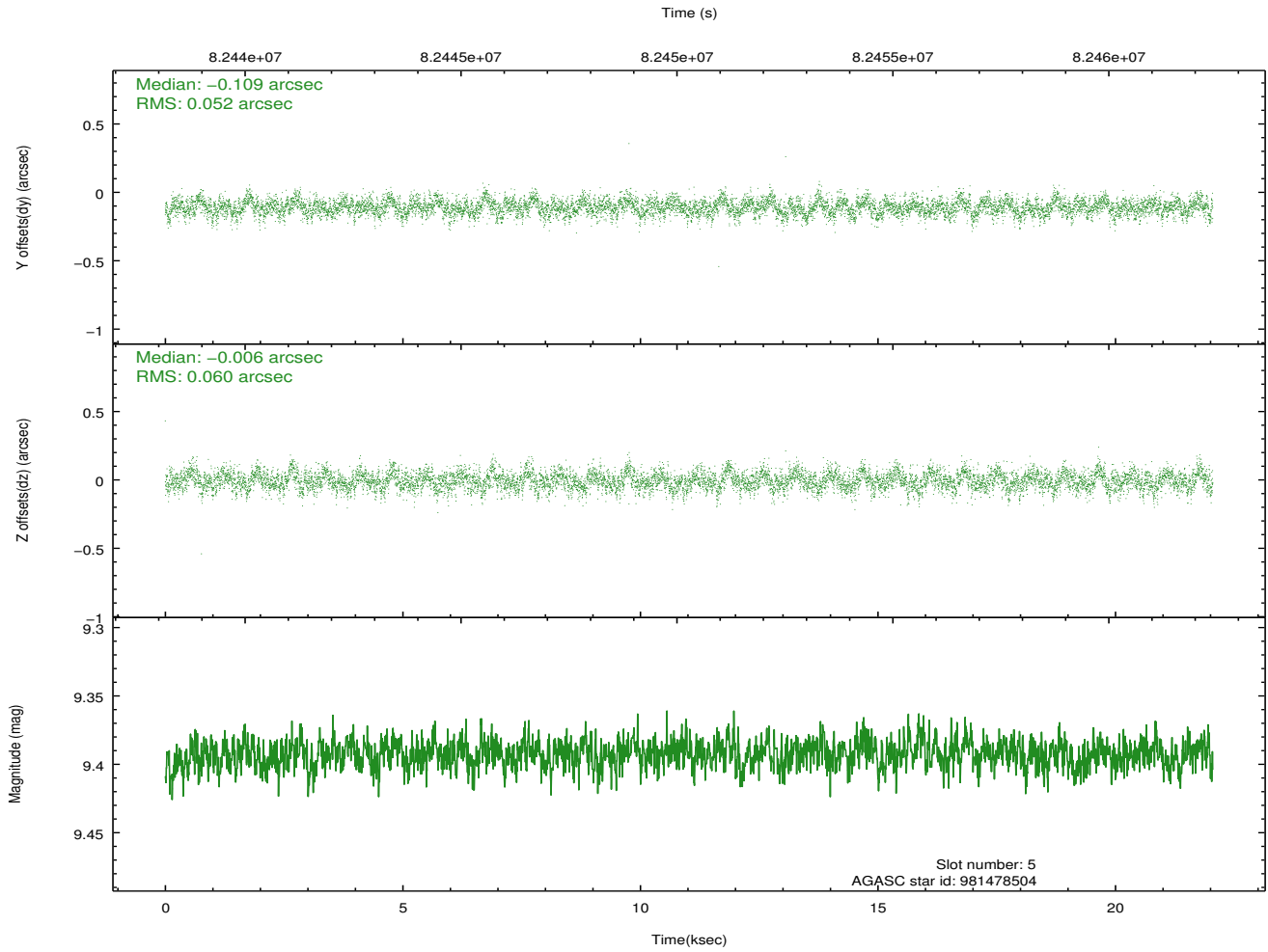
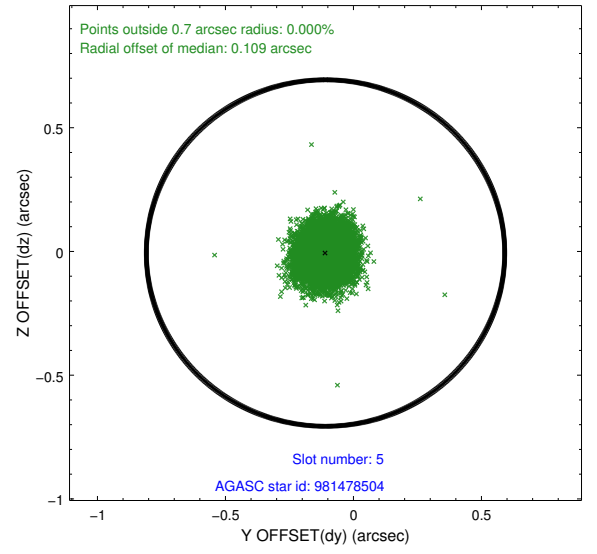
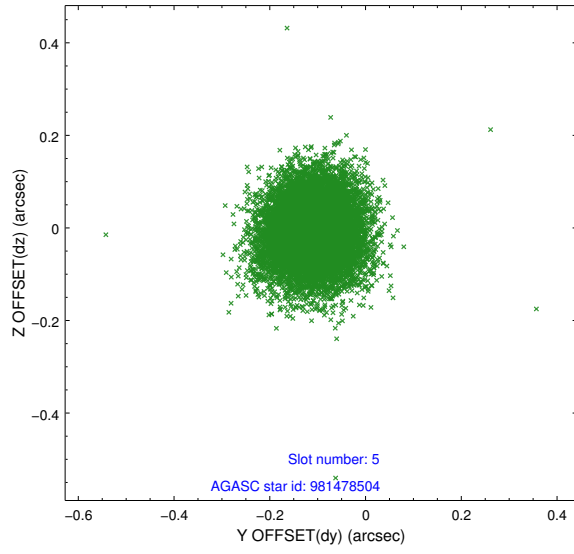
2.4.1 Slot 3



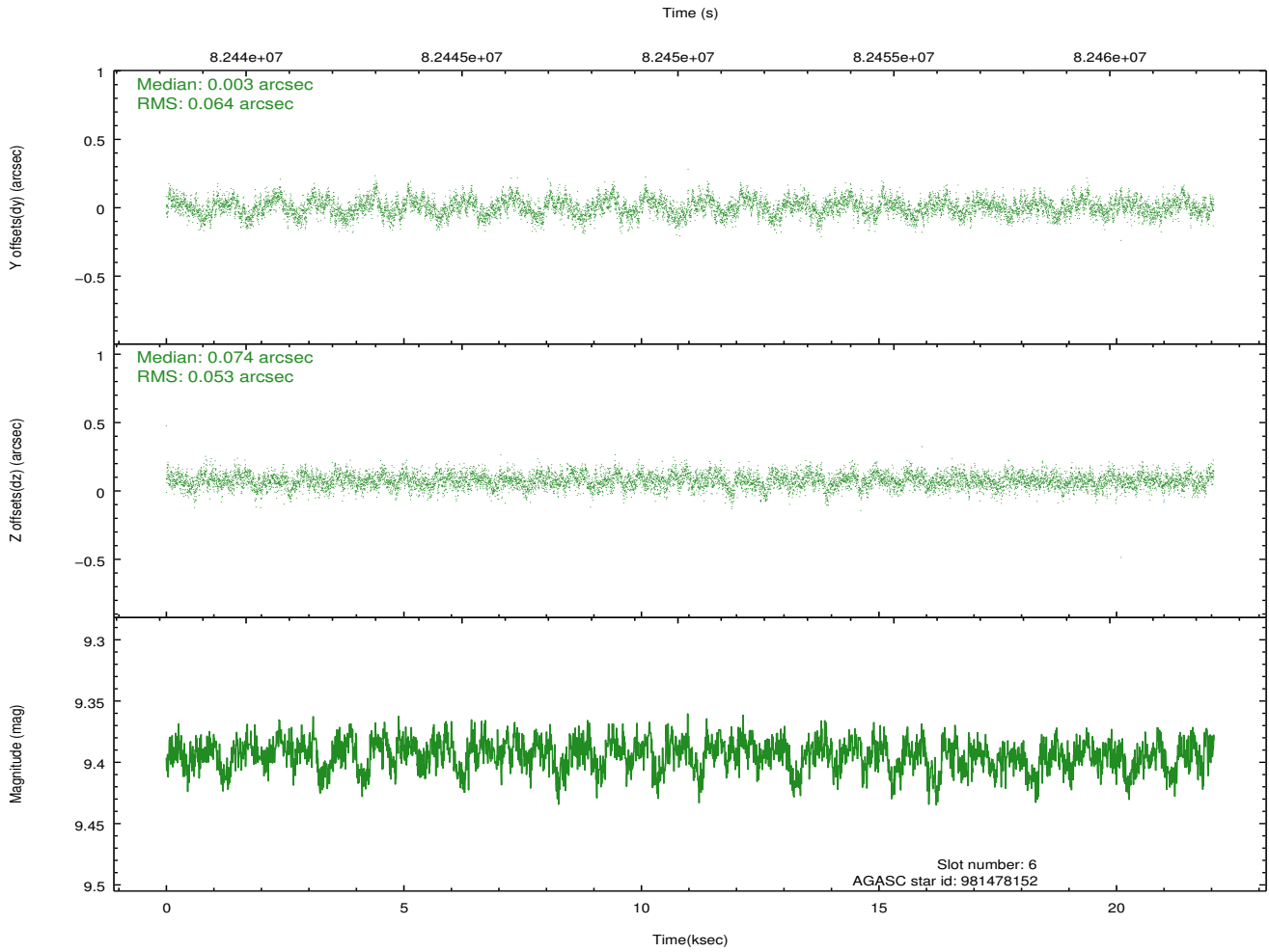
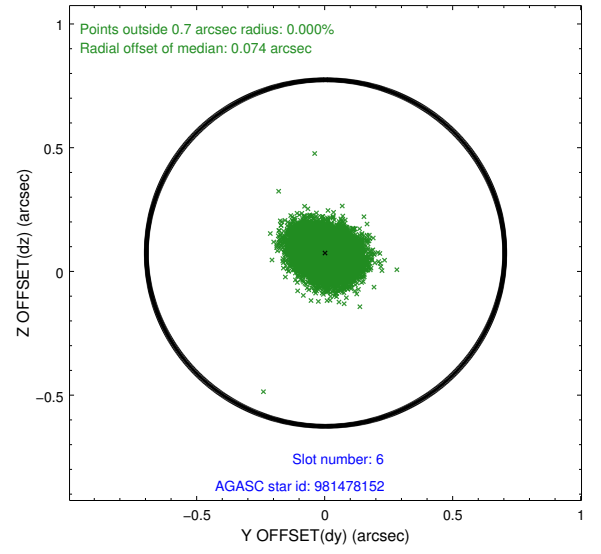
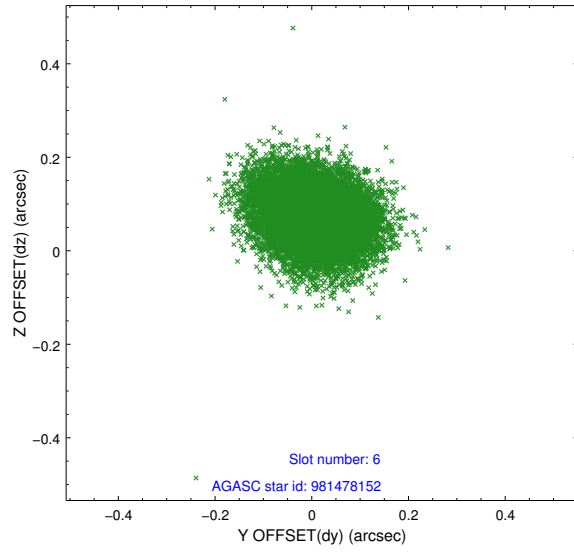
2.4.2 Slot 4



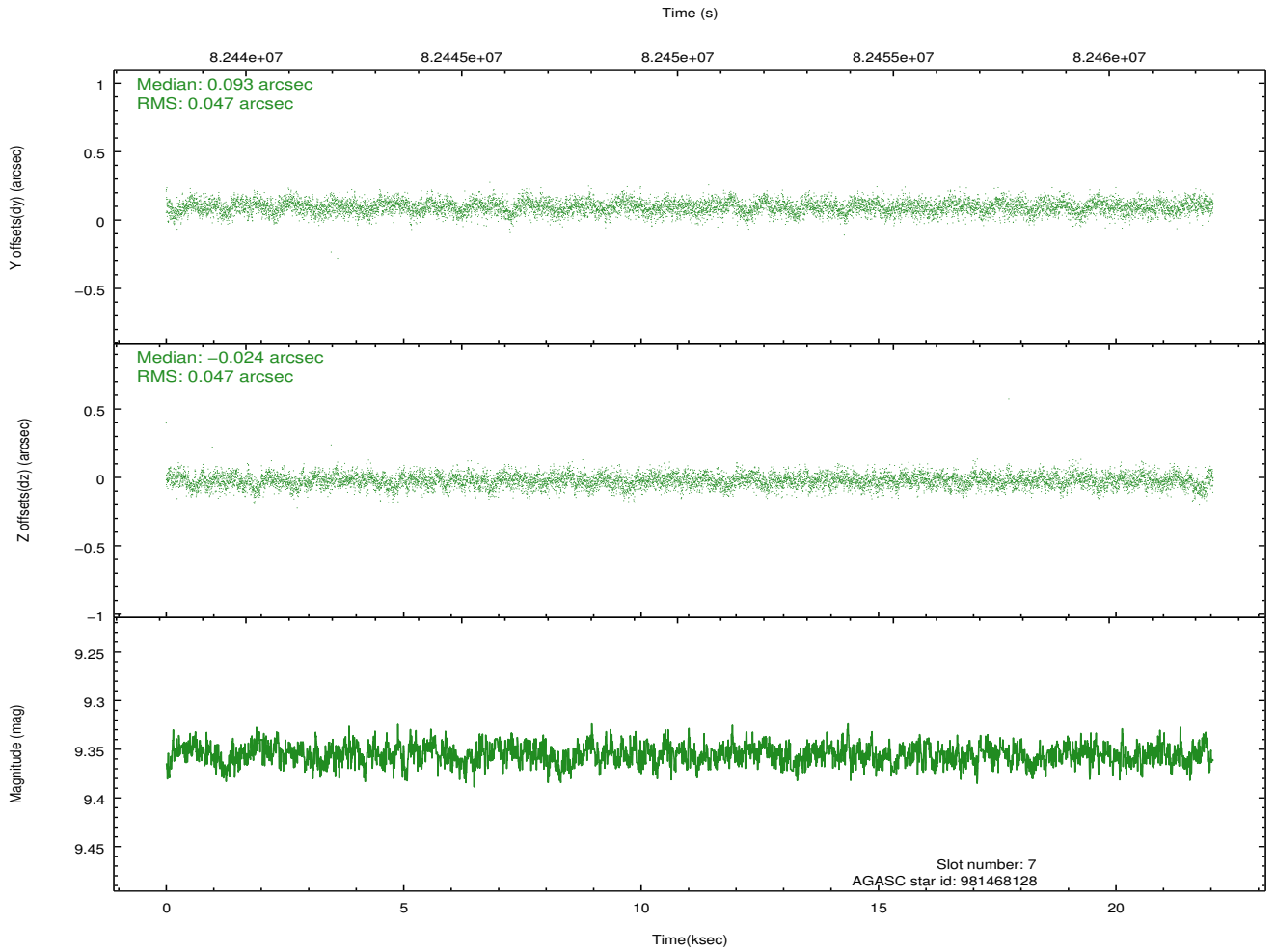
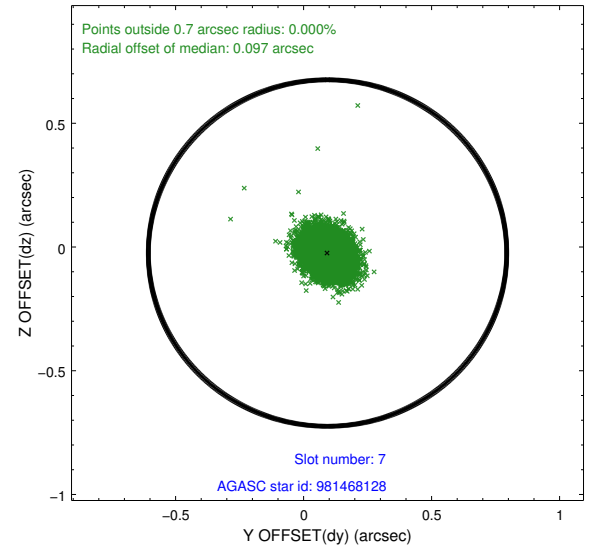
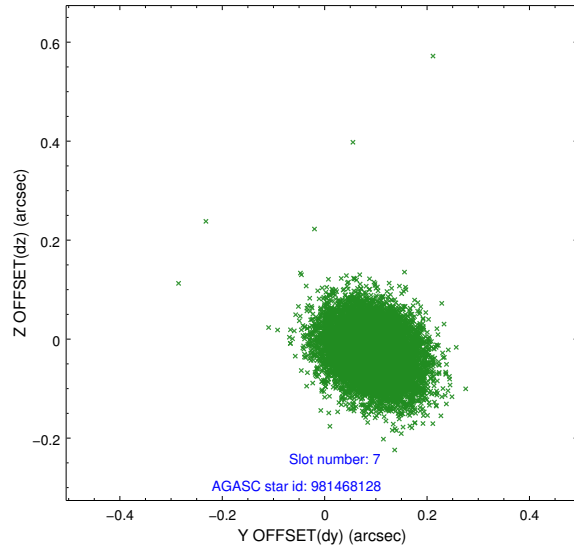
2.4.3 Slot 5



2.4.4 Slot 6

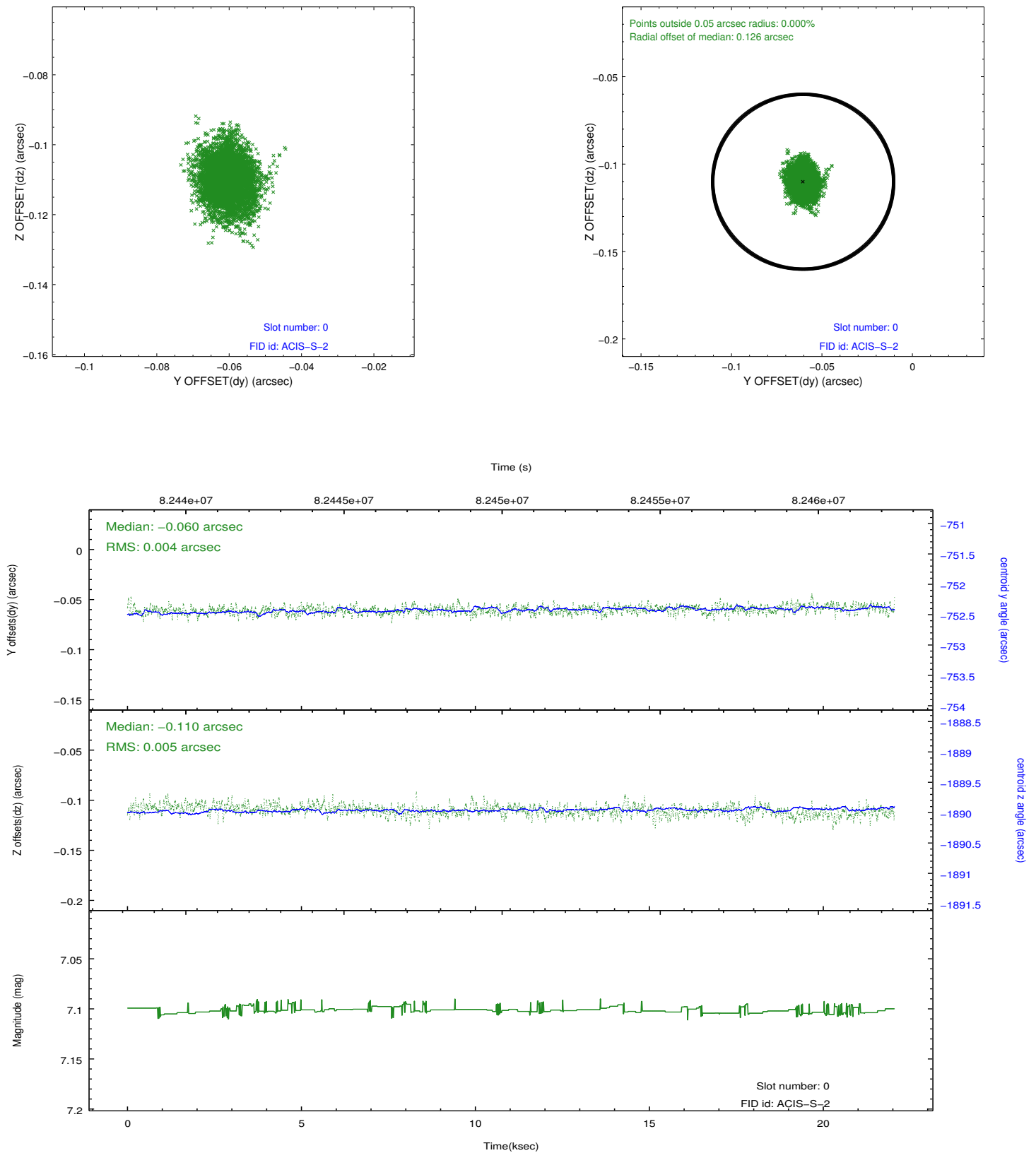


2.4.5 Slot 7

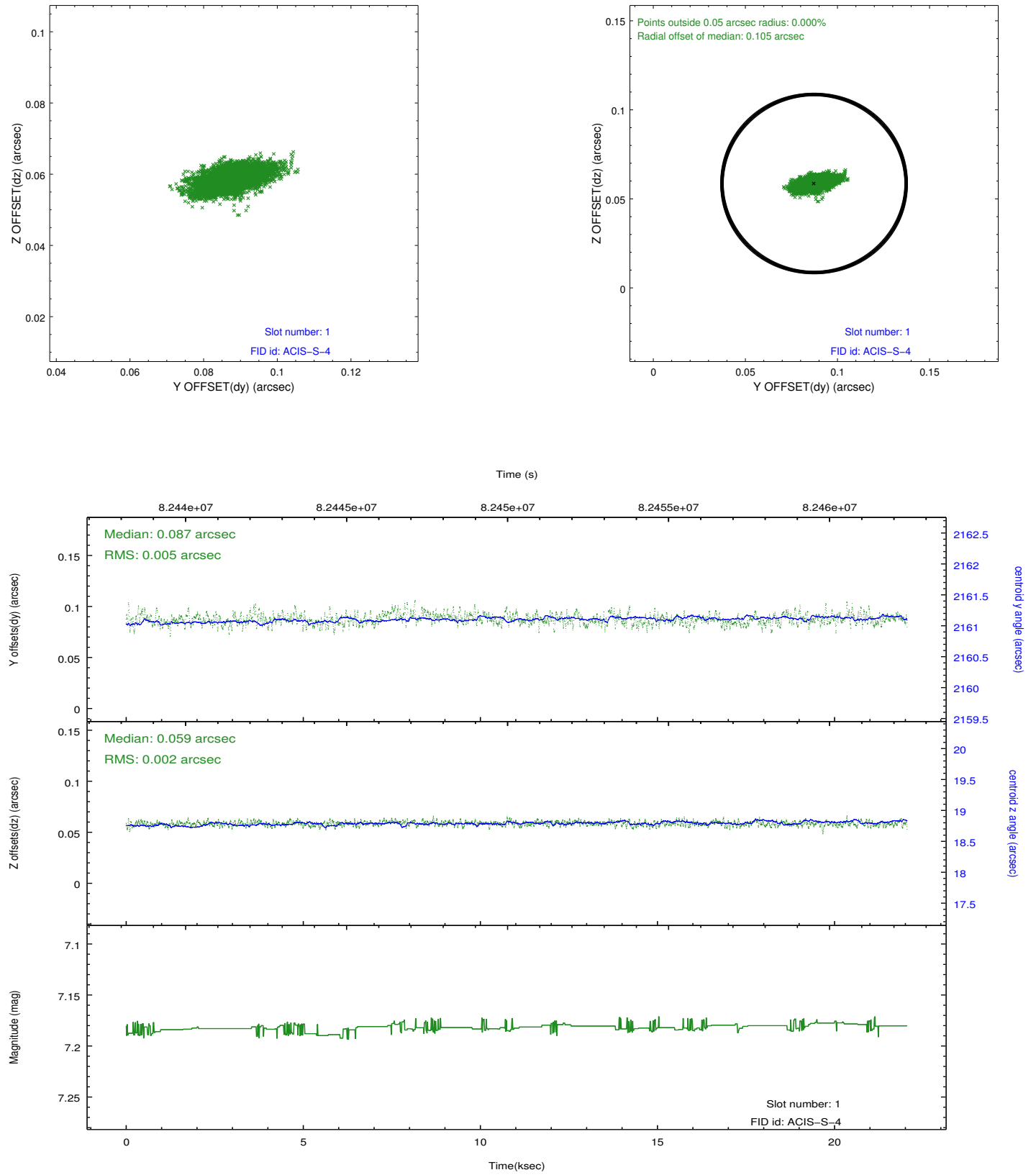


2.5 FID Slots

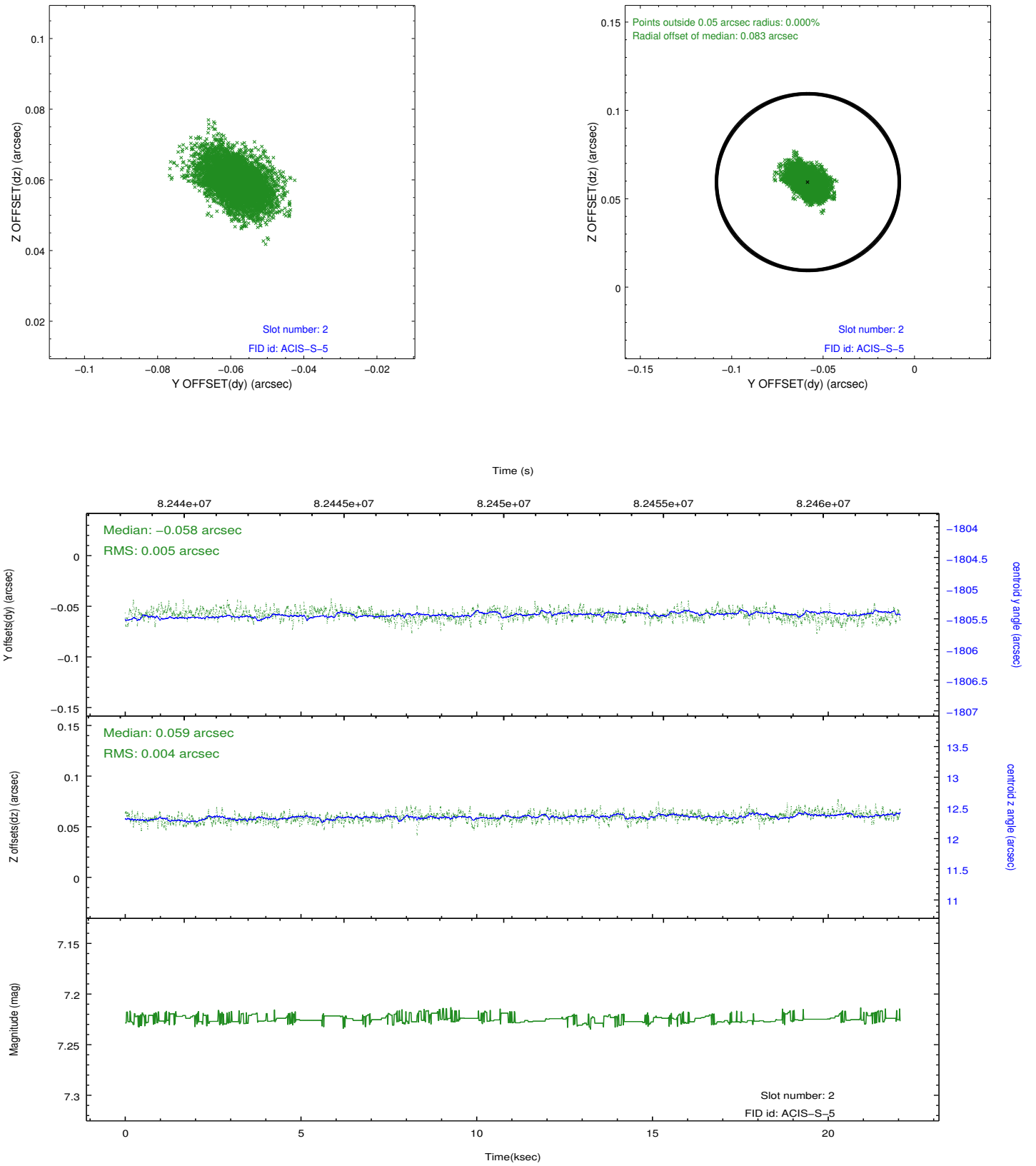
2.5.1 Slot 0



2.5.2 Slot 1



2.5.3 Slot 2

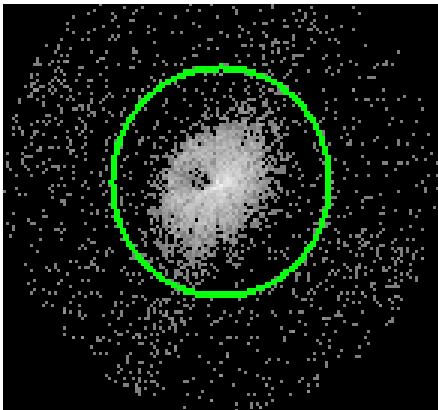


3 Gratings

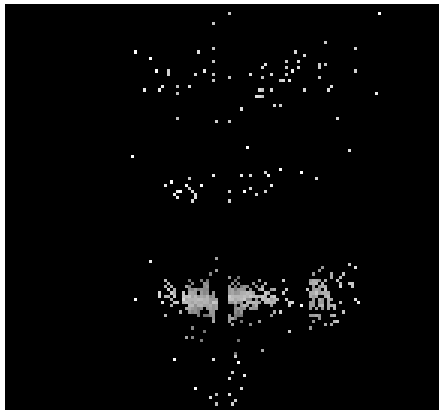
3.1 LETG Arm



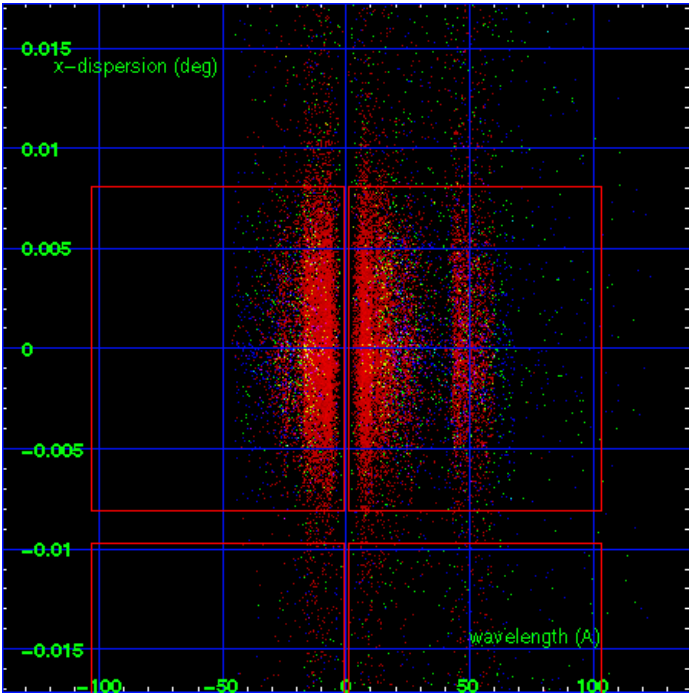
LETG Order Sort 123



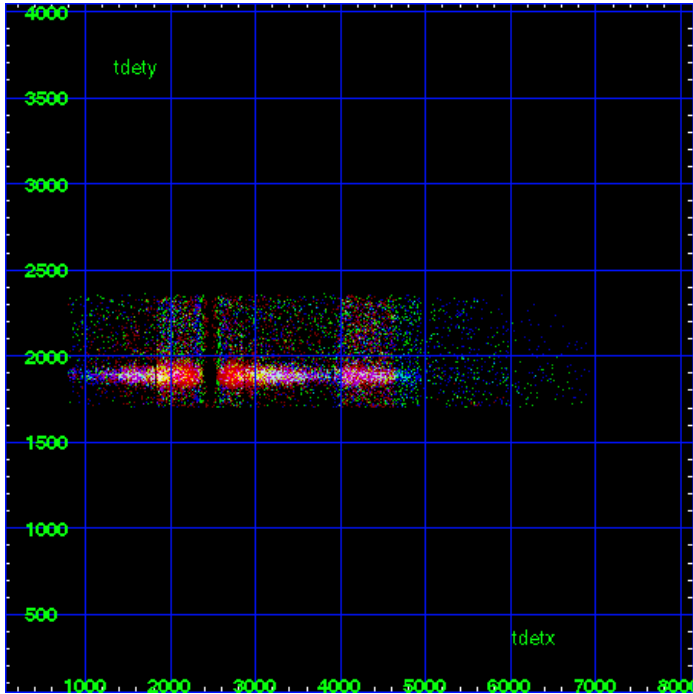
LETG Zero Order



LETG Order Sort ALL

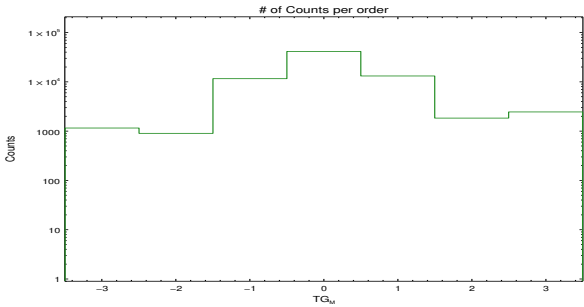


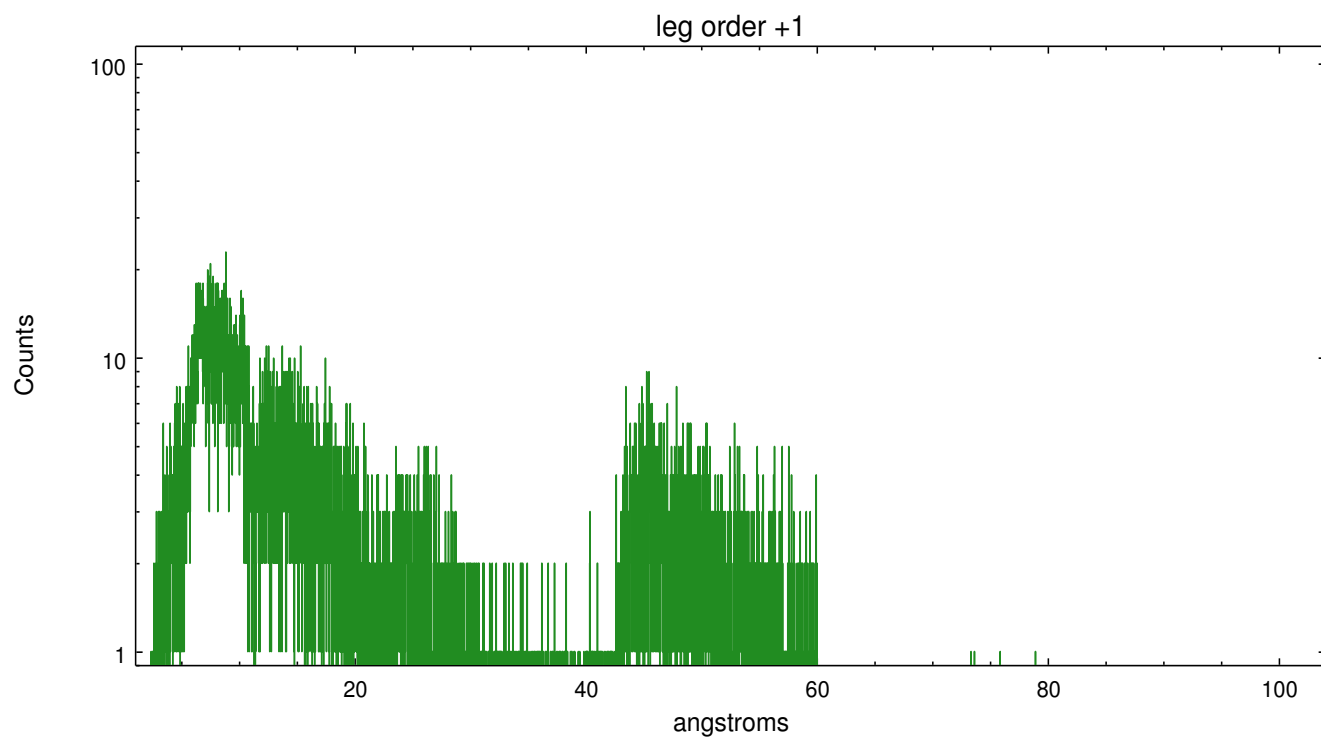
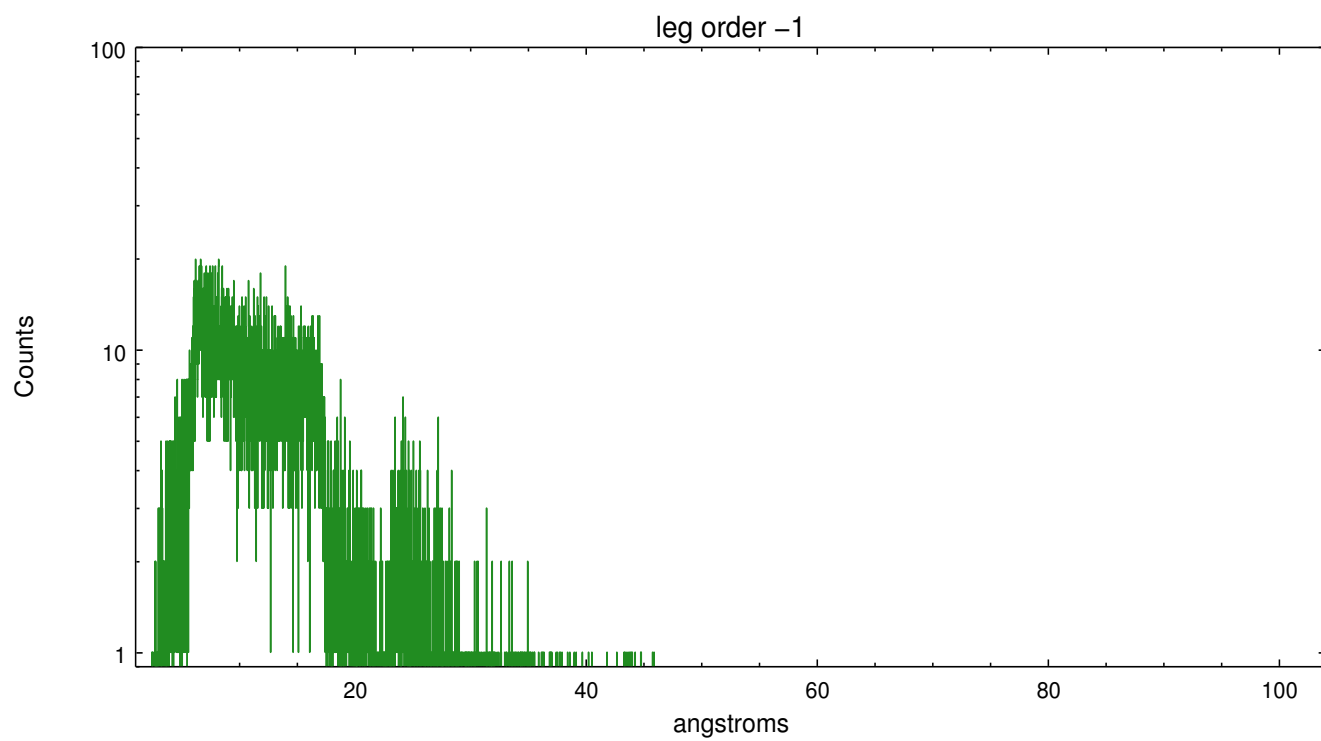
Spot Image LETG



Full Detector LETG

	order -3	order -2	order -1	order 0	order 1	order 2	order 3
Events	1159	903	11676	41742	13244	1843	2461





A Summary

A.1 Status

V&V Scientist	David Huenemoerder
V&V Date (YYYY-MM-DD)	2013.01.15
V&V Edition	1
V&V Disposition and Status	OK
V&V Charge Time	21.161

A.2 Comments

Far off-axis --- required custom region parameters;

Warning: the grating line-spread-function is not calibrated off-axis;
there is no valid grating RMF data for this observation.