

V&V Reference Report

L2 ASCDS Version : 7.6.10

Observation 1712 - L2 Version 001
Chandra X-Ray Center

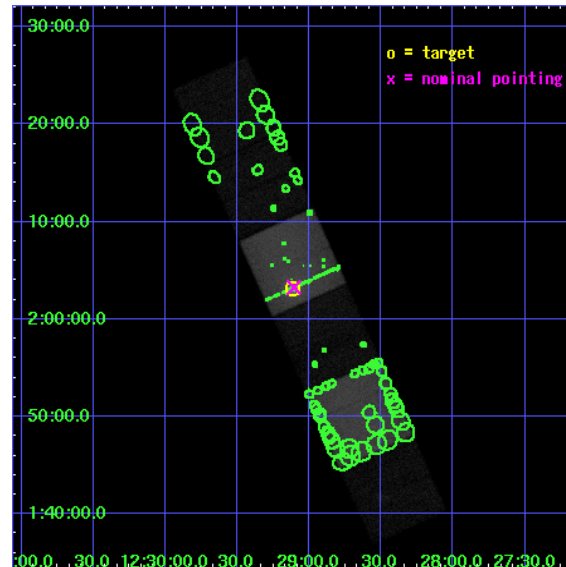
L2 Processing Date : May 25 2007

Contents

1	Front	2
2	OBI	3
2.1	OBI	3
2.1.1	Images	3
2.1.2	Bias	3
2.1.3	Parameters	4
2.1.4	Events	4
2.2	Compared Parameters	5
2.3	Aspect	6
2.4	Star Slots	9
2.4.1	Slot 3	9
2.4.2	Slot 4	10
2.4.3	Slot 5	11
2.4.4	Slot 6	12
2.4.5	Slot 7	13
2.5	FID Slots	14
2.5.1	Slot 0	14
2.5.2	Slot 1	15
2.5.3	Slot 2	16
3	Point Sources	17
A	Summary	18
A.1	Status	18
A.2	Comments	18

1 Front

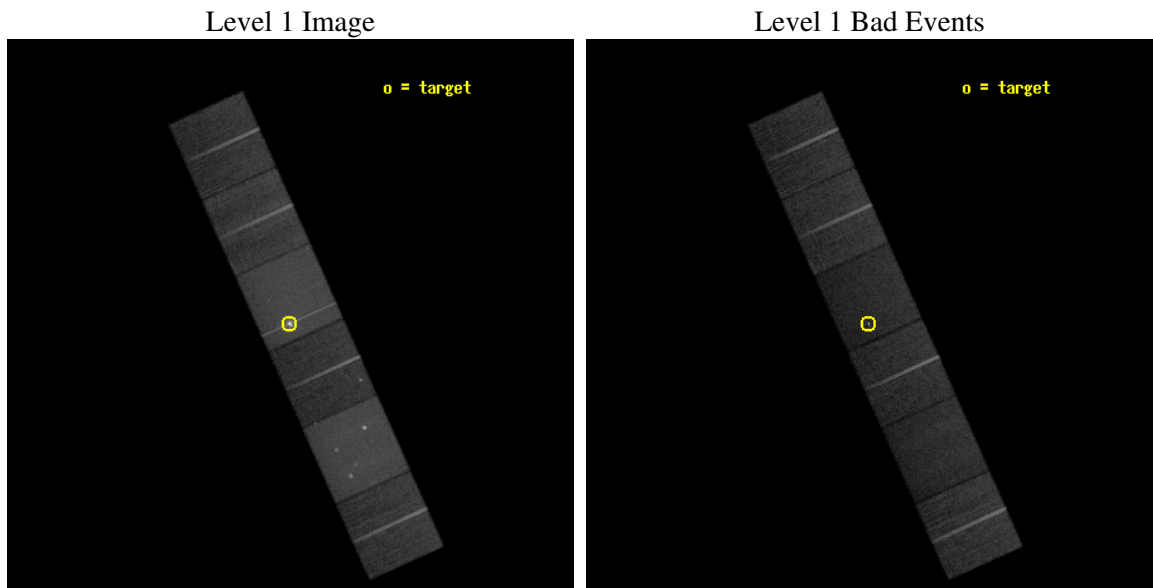
seq_num	790054
obs_id	1712
title	IN FLIGHT CALIBRATION OF THE HETGS EFFECTIVE AREA AND CROSS DISPERSION PROFILE
observer	Dr. CXC Calibration
object	3C 273
dtcycle	0
cycle	P
ra_targ	187.277917
dec_targ	2.052389
ra_nom	187.27676746454
dec_nom	2.054233828647
roll_nom	245.84742800936
revision	3
ontime	27798.400025889
livetime	27446.399946575
ontime4	27795.159065649
ontime5	27798.400025889
ontime6	27795.15909557
ontime7	27798.400025889
ontime8	27798.400025889
ontime9	27798.400025889
l2events	456441



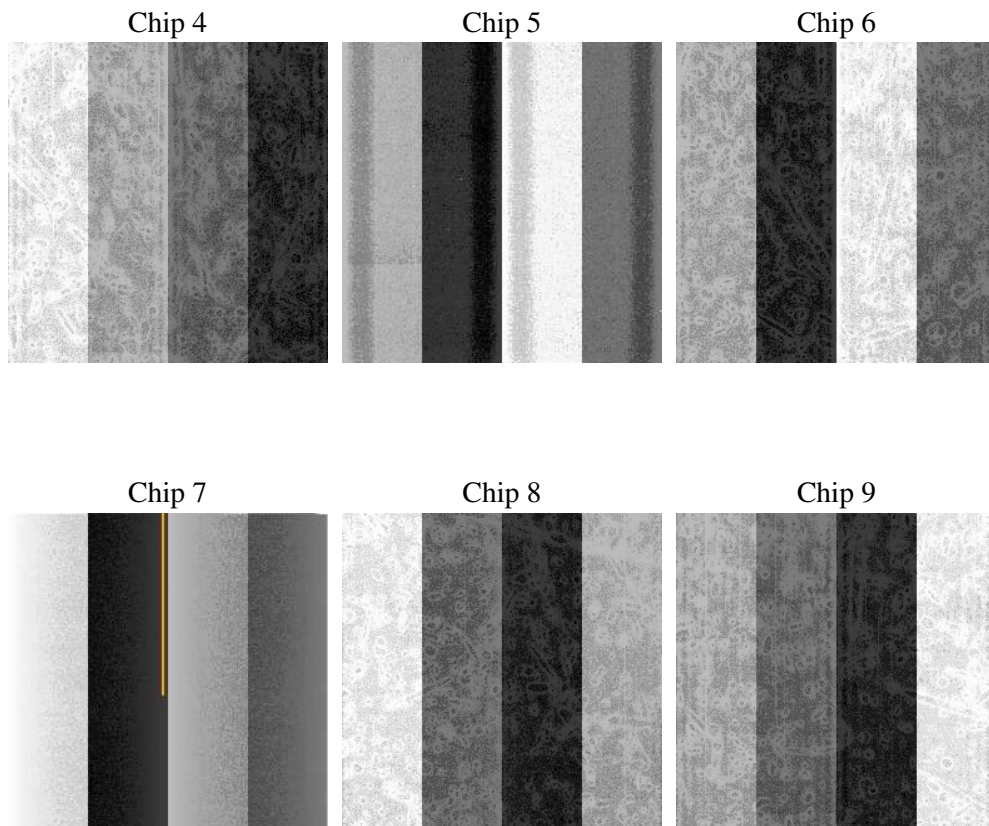
2 OBI

2.1 OBI

2.1.1 Images



2.1.2 Bias



2.1.3 Parameters

obi_num	1
ascdsver	7.6.10
caldsver	3.4.0
date	2007-05-25T15:53:48
revision	3

sched_exp_time	28000.000000
ontime	27798.400025889
ontime4	27795.159065649
ontime5	27798.400025889
ontime6	27795.15909557
ontime7	27798.400025889
ontime8	27798.400025889
ontime9	27798.400025889
l1events	1402224

2.1.4 Events

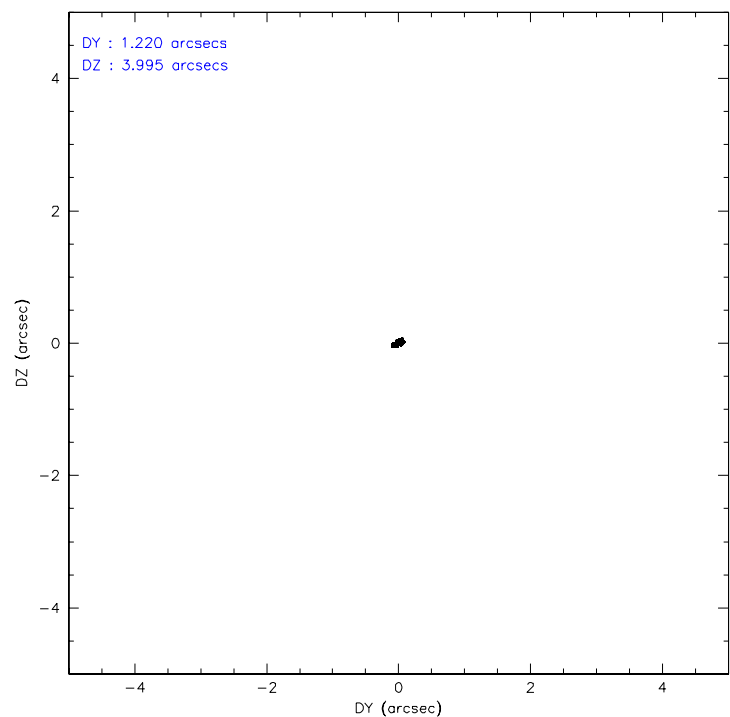
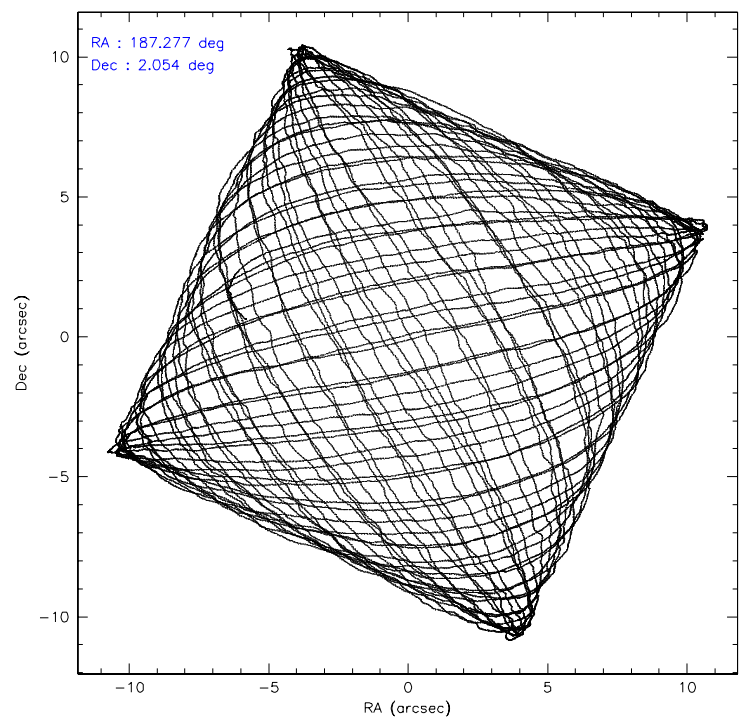
	ccd 4	ccd 5	ccd 6	ccd 7	ccd 8	ccd 9
level 1 events	197615	297727	177881	331956	222212	174833
rejected events	173102	123973	151490	123001	170490	150796
rejected %	87%	41%	85%	37%	76%	86%

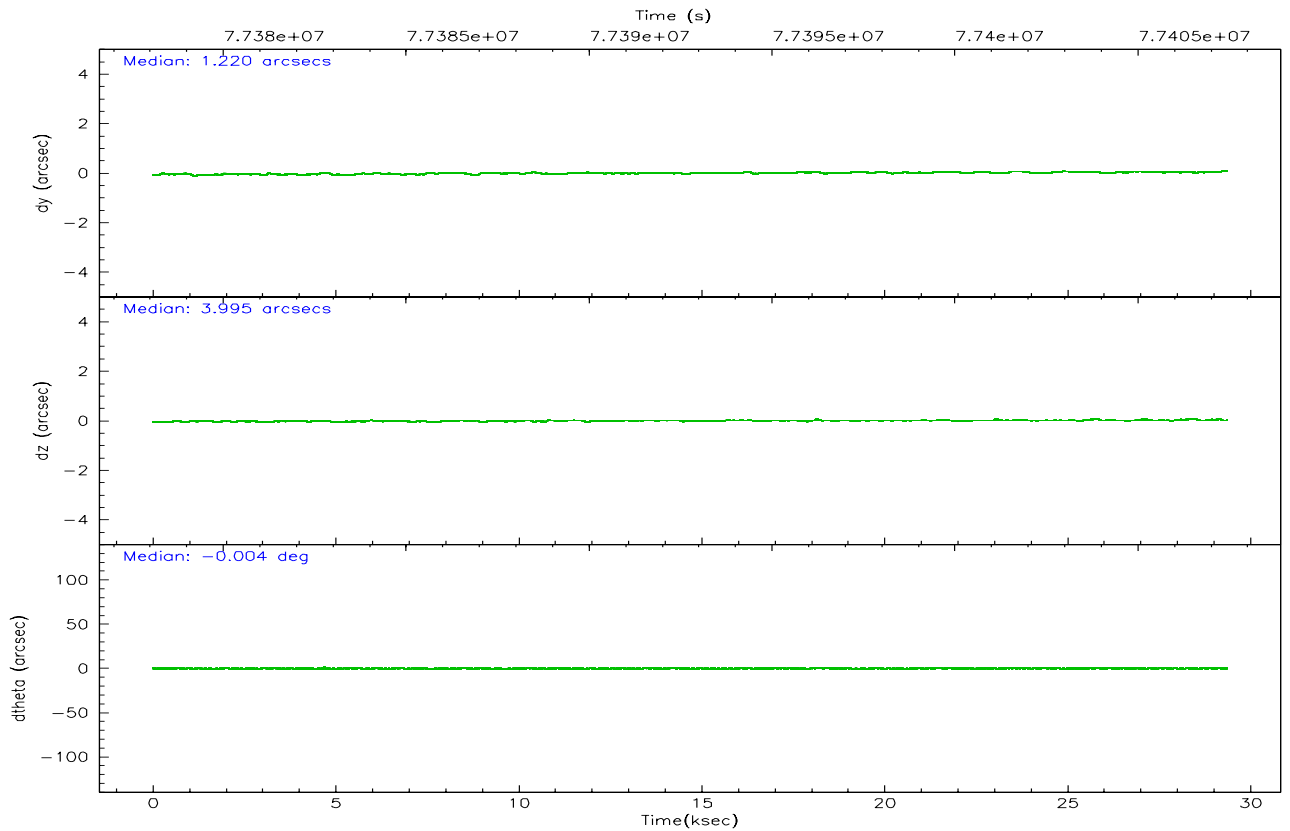
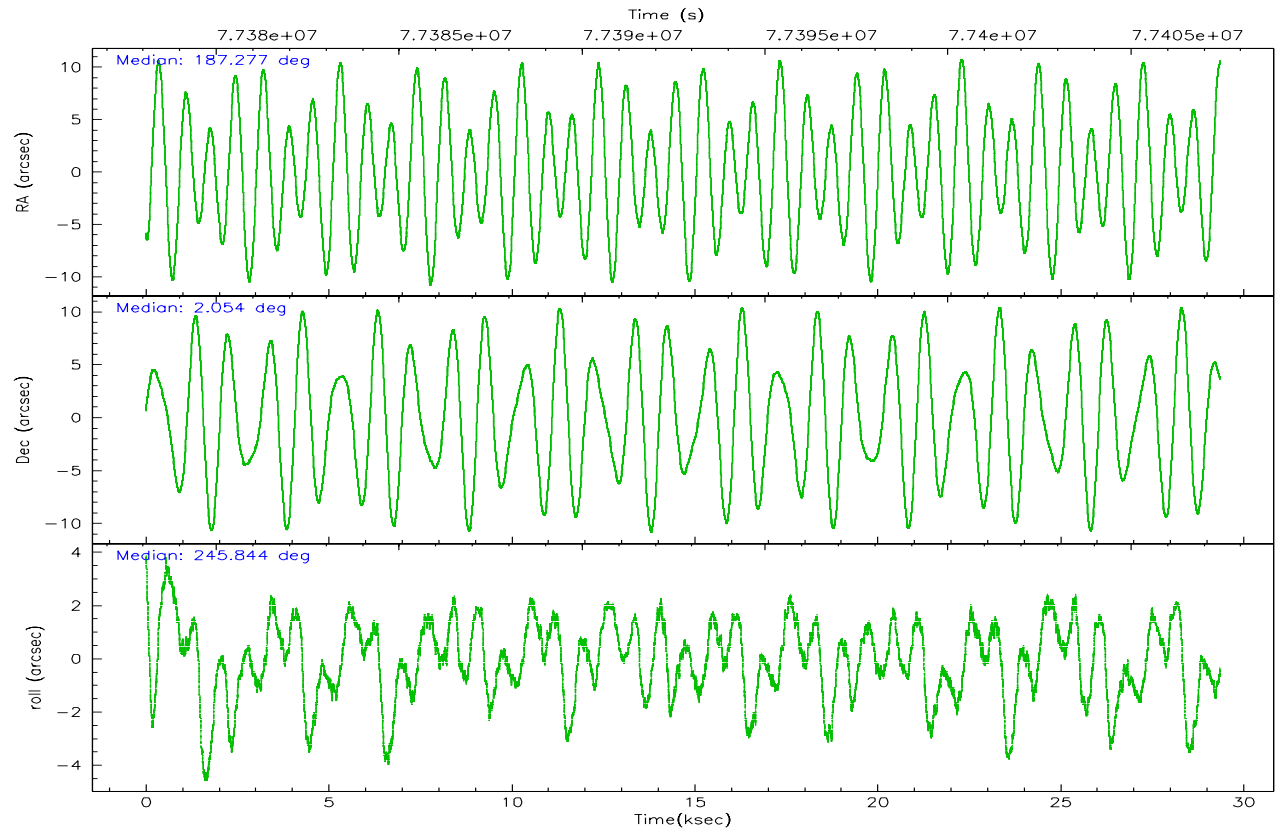
	ccd 4	ccd 5	ccd 6	ccd 7	ccd 8	ccd 9
grade 0 events	11822	31327	13873	35270	19549	11675
	5%	10%	7%	10%	8%	6%
grade 1 events	102	307	94	783	131	75
	0%	0%	0%	0%	0%	0%
grade 2 events	5450	46420	4697	42724	9892	4576
	2%	15%	2%	12%	4%	2%
grade 3 events	1941	9790	2052	19382	5903	2021
	0%	3%	1%	5%	2%	1%
grade 4 events	1817	9459	2022	19212	5367	1880
	0%	3%	1%	5%	2%	1%
grade 5 events	5589	18373	6601	21542	8220	6579
	2%	6%	3%	6%	3%	3%
grade 6 events	3489	76793	3752	92414	11015	3892
	1%	25%	2%	27%	4%	2%
grade 7 events	167405	105258	144790	100629	162135	144135
	84%	35%	81%	30%	72%	82%

2.2 Compared Parameters

Parameter	Planned	Actual	Parameter	Planned	Actual
Instrument	ACIS	ACIS	Obspar format version number	6	6
Detector	ACIS-456789	ACIS-456789	Obspar file type	PREDICTED	ACTUAL
Grating	NONE	NONE	Obspar update status	NONE	UPDATED
Data mode	FAINT	FAINT	Number of optional ACIS chips dropped	0	0
Observation mode	POINTING	POINTING	On-chip summing requested	N	N
Pointing RA	187.273858	187.2767674645436	Subarray requested	NONE	NONE
Pointing Dec	2.081473	2.054233828647049	Alternating exposures requested	N	N
Pointing Roll	245.690902	245.847428009364	Primary exposure time	0.000000	3.2
SIM focus pos (mm)	-0.684267	-0.6828225247311905			
SIM defocus (mm)	0	0.001444936568705701			
SIM translation stage pos (mm)	-187.132523	-187.1228876879999			
SIM translation stage offset (mm)	-3	-3.009634895007935			
Observation start time	77379437.184000	77377470.949928			
Observation start date	2000-06-14T14:16:13	2000-06-14T13:44:30			
Observation end time	77407437.184000	77408016.463553			
Observation end date	2000-06-14T22:02:53	2000-06-14T22:13:36			
Read mode	TIMED	TIMED			

2.3 Aspect



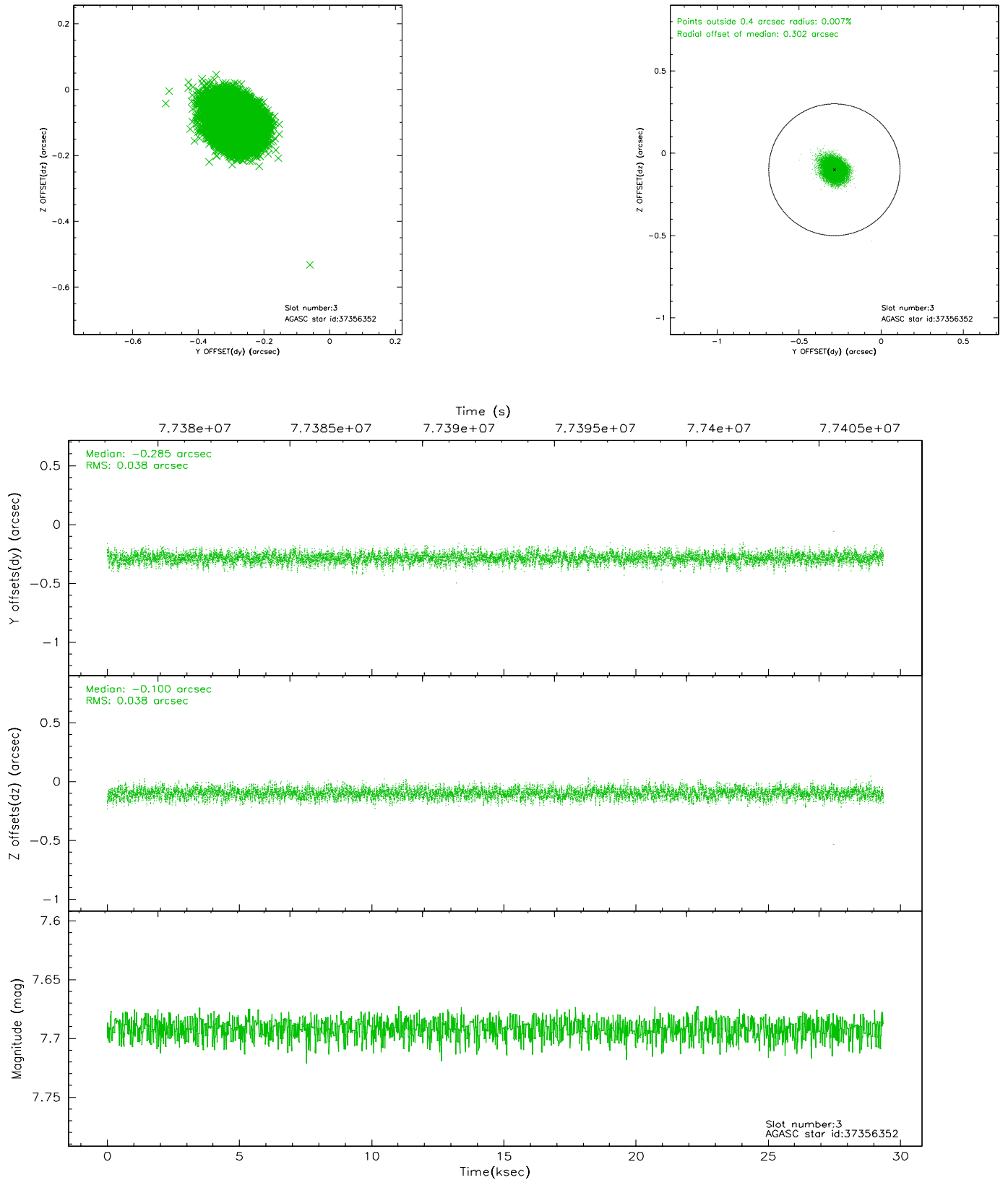


Slot Statistics

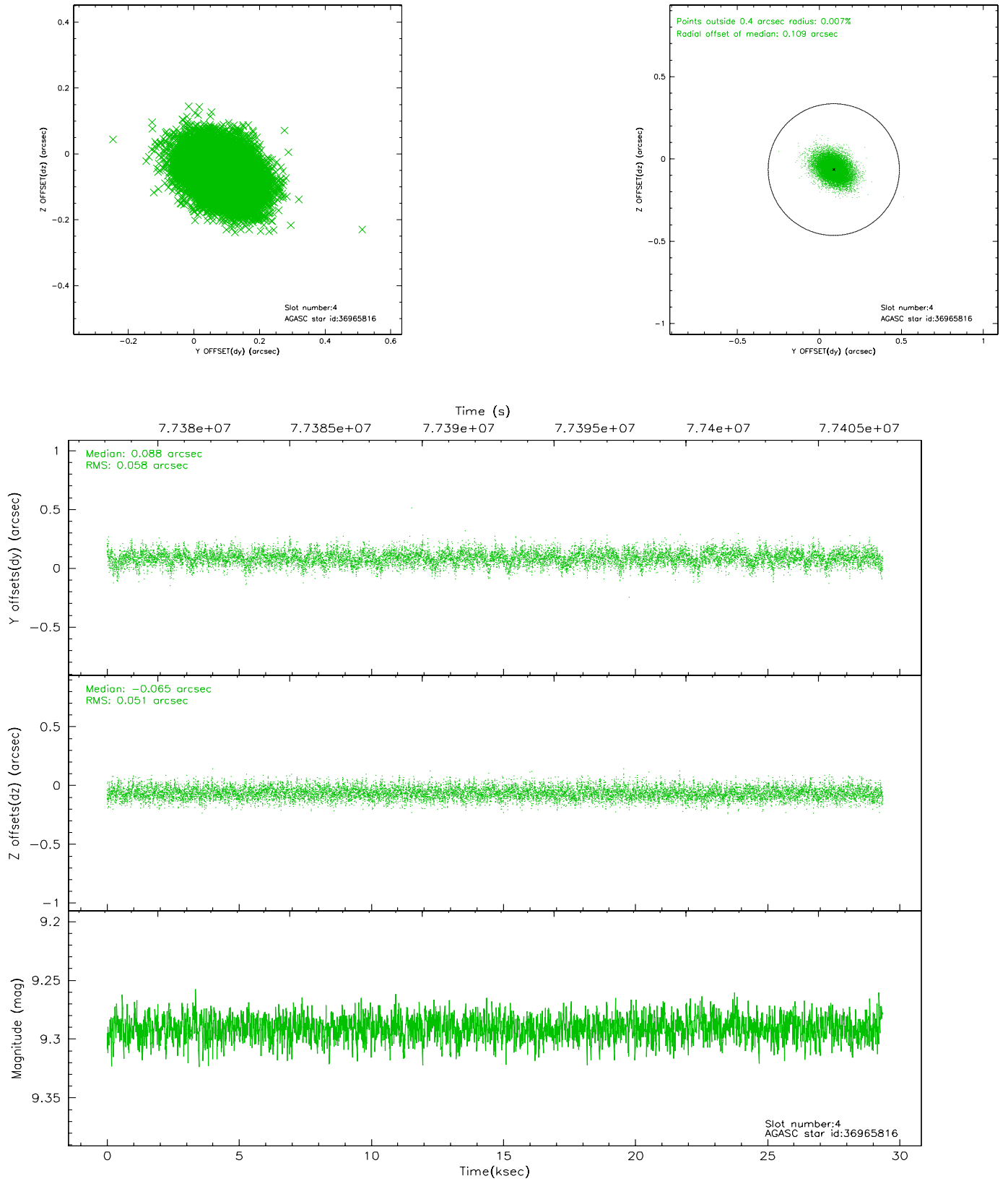
slot	status	id	mag	n_pts	med_dy	med_dz	dr1	dr2	ra	dec	mean_y	mean_z
0	FID	ACIS-S-2	7.11	7158	-0.041	-0.003	0.006	0.010	0.000000	0.000000	-753.65	-1787.22
1	FID	ACIS-S-4	7.20	7159	-0.035	0.021	0.005	0.009	0.000000	0.000000	2159.60	121.19
2	FID	ACIS-S-5	7.23	7161	0.045	-0.009	0.006	0.010	0.000000	0.000000	-1806.30	114.93
3	GUIDE	37356352	7.69	14320	-0.285	-0.100	0.057	0.093	187.433784	2.618460	-1998.11	-271.97
4	GUIDE	36965816	9.29	14312	0.088	-0.065	0.080	0.136	186.823353	1.771455	1684.96	-1018.07
5	GUIDE	36965296	9.09	14320	0.109	-0.074	0.075	0.126	186.926292	1.837429	1316.35	-778.28
6	GUIDE	37883040	10.04	14315	0.330	0.182	0.123	0.202	187.575516	1.280402	2182.24	2176.84
7	GUIDE	37880408	10.07	14254	-0.243	0.055	0.123	0.200	187.758191	2.290324	-1402.14	1278.14

2.4 Star Slots

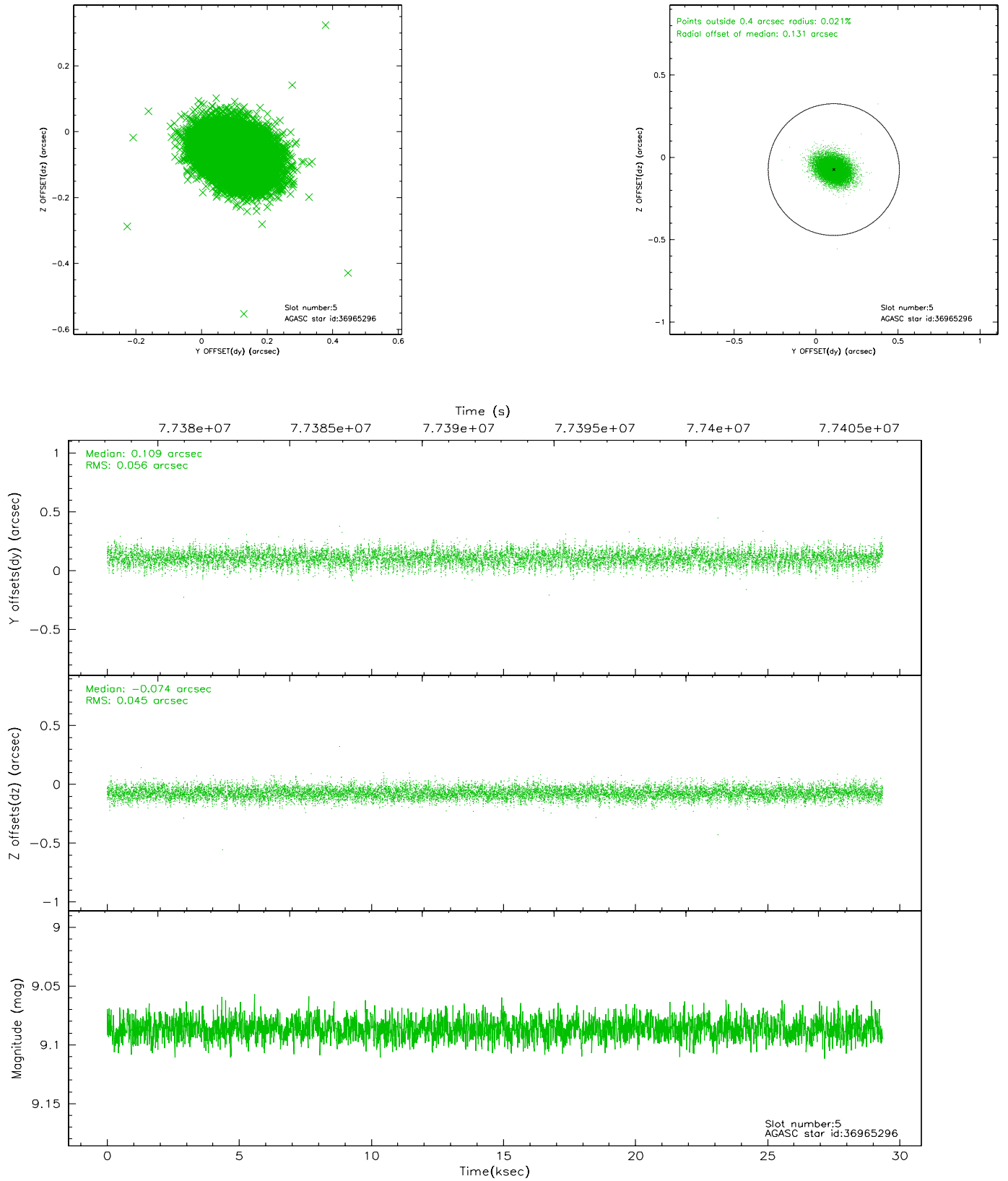
2.4.1 Slot 3



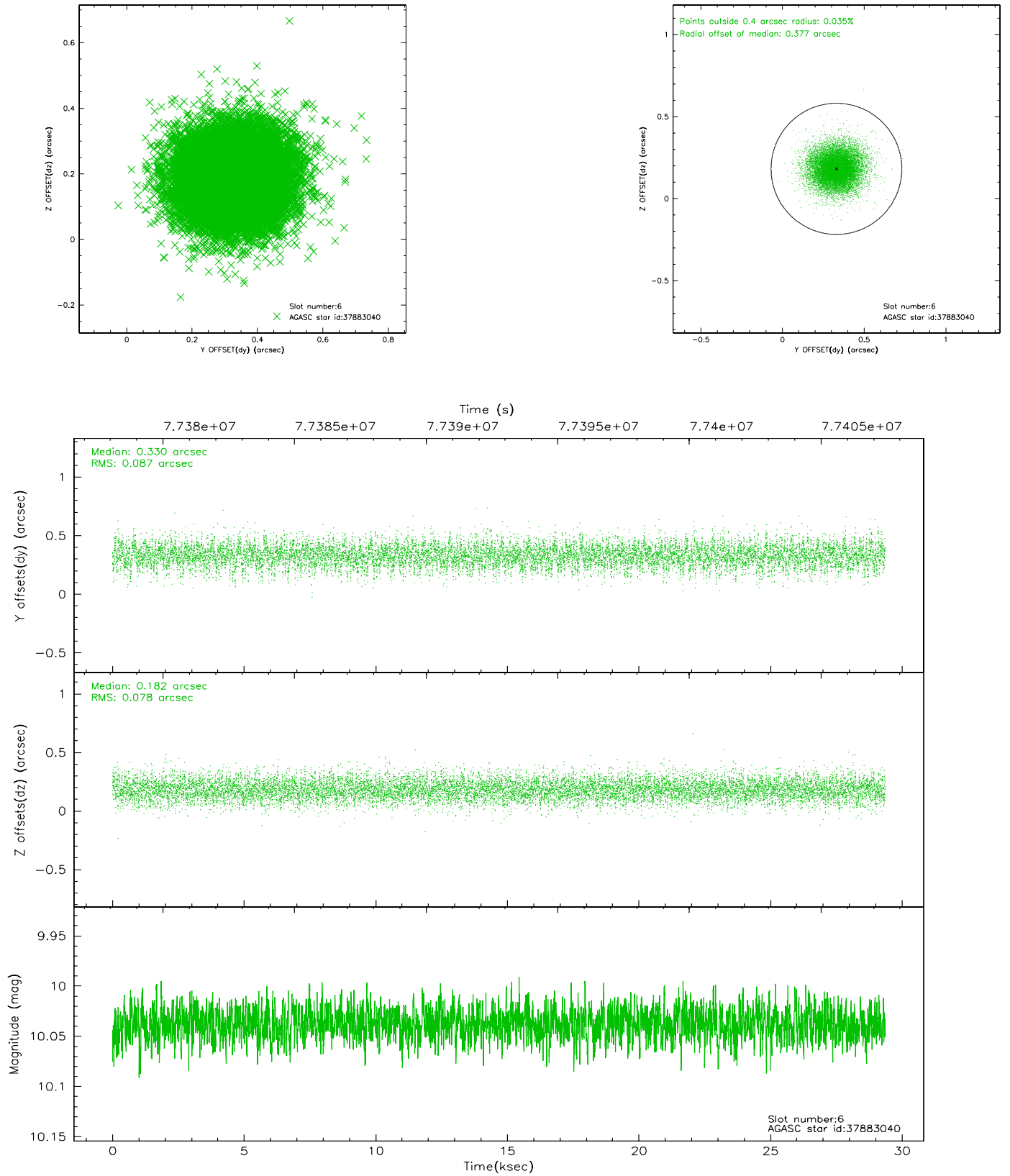
2.4.2 Slot 4



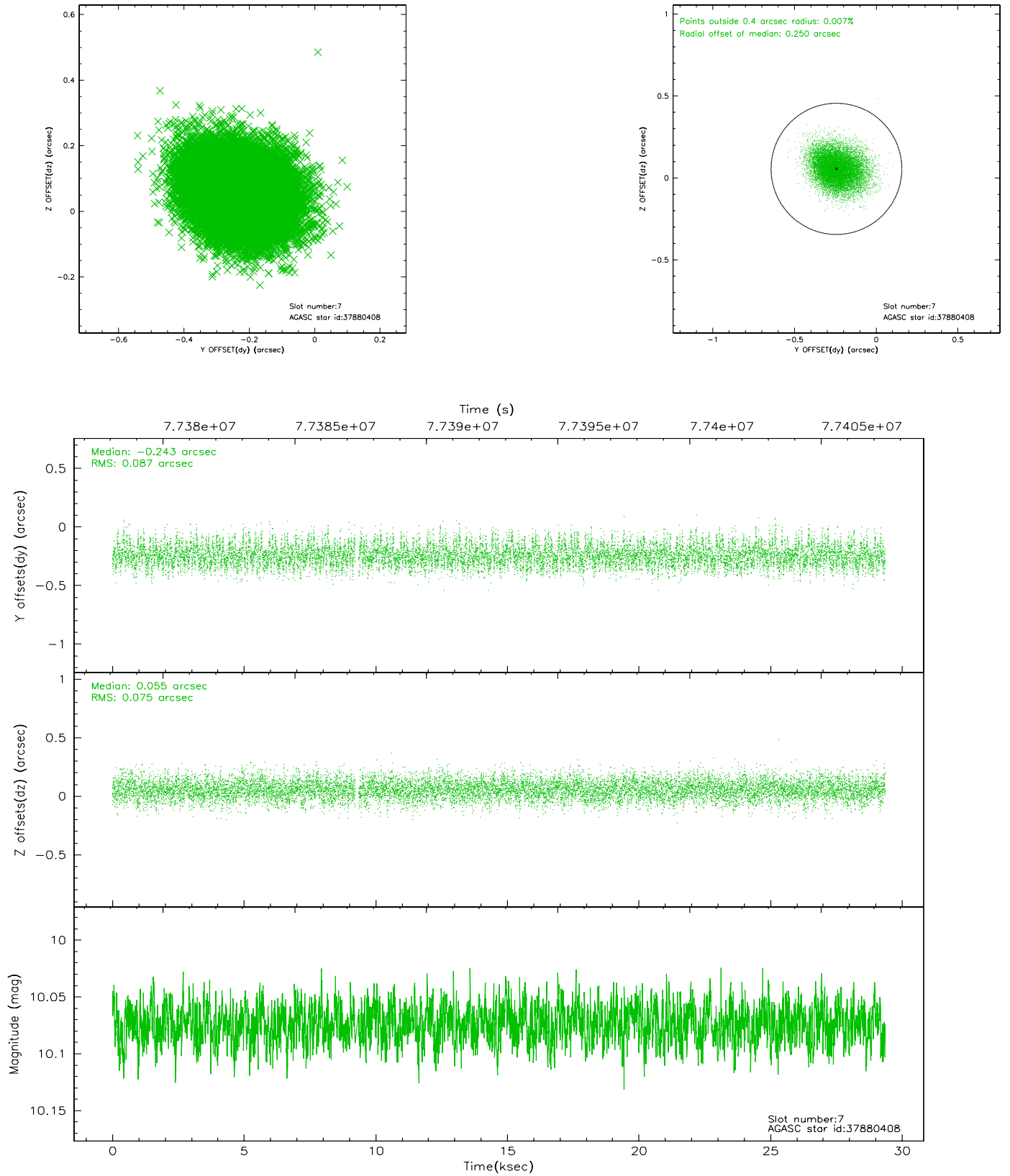
2.4.3 Slot 5



2.4.4 Slot 6

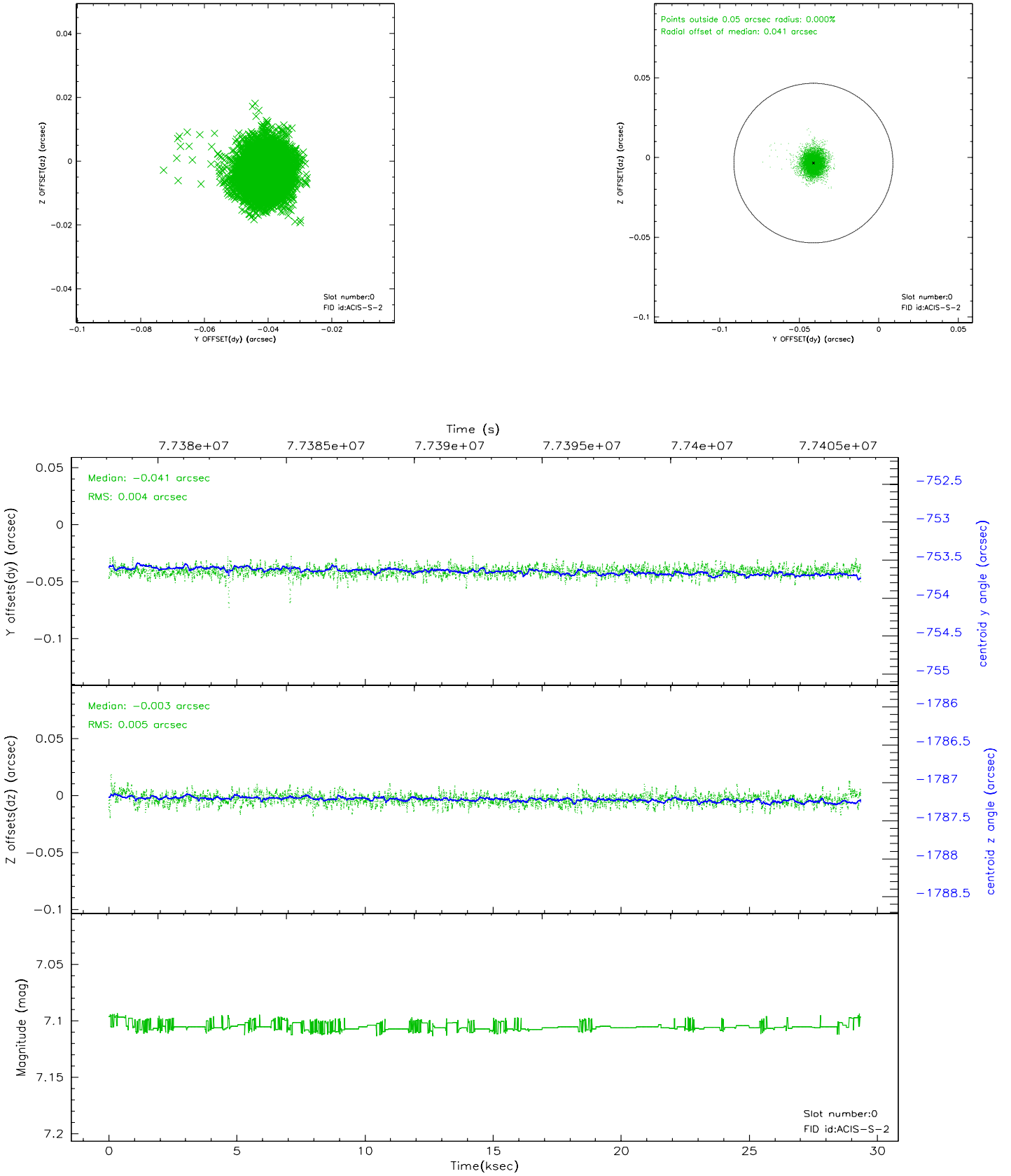


2.4.5 Slot 7

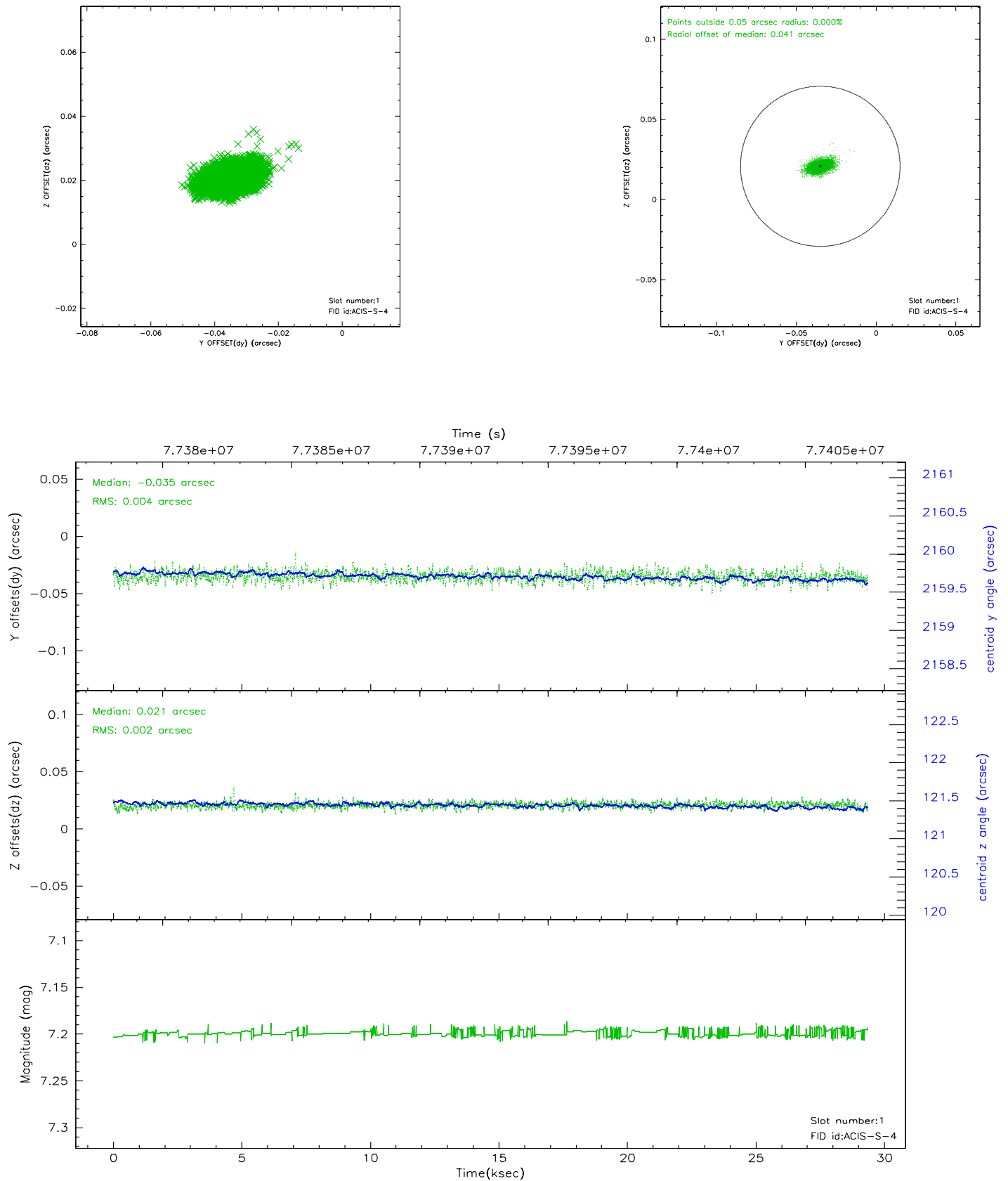


2.5 FID Slots

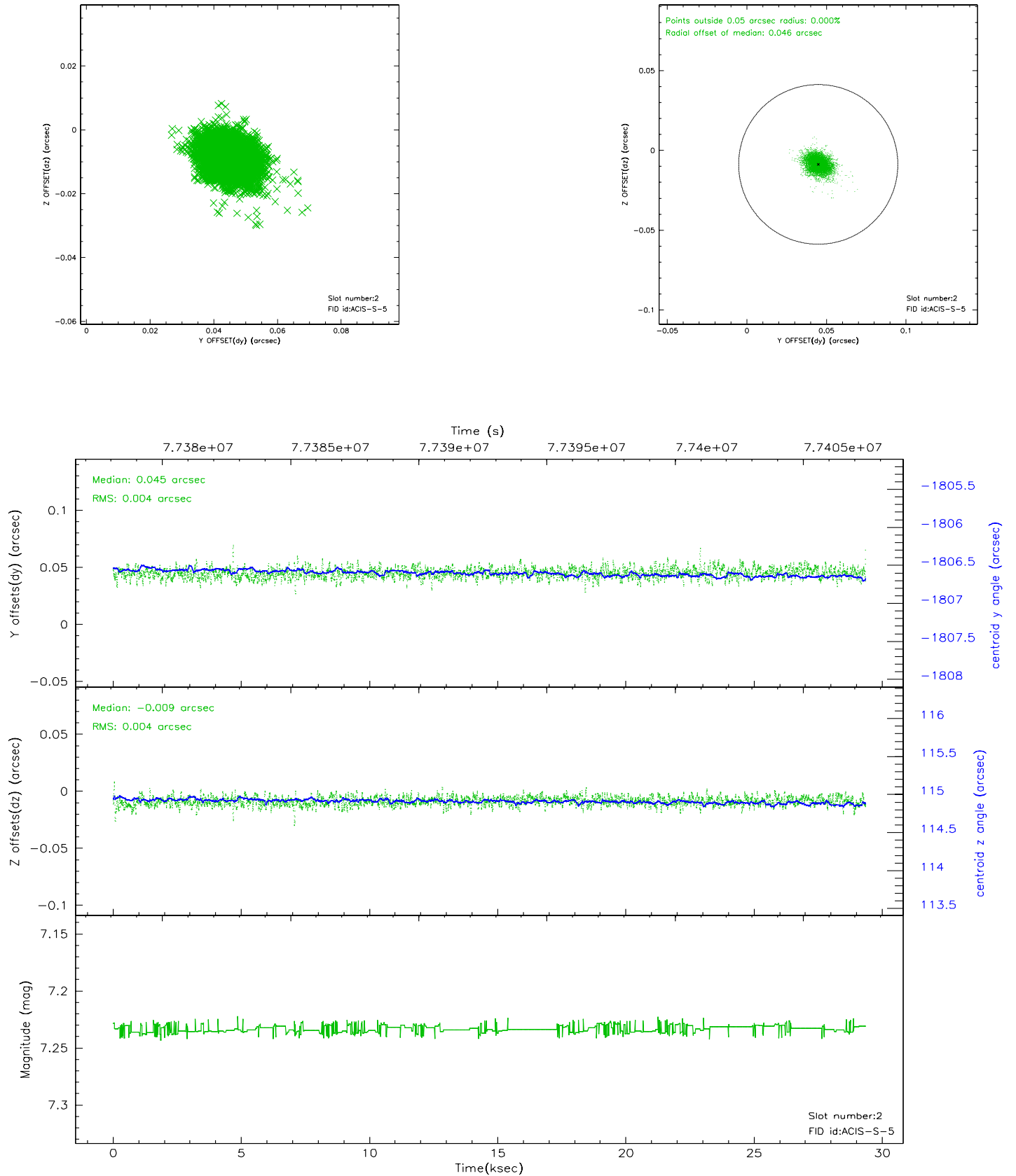
2.5.1 Slot 0



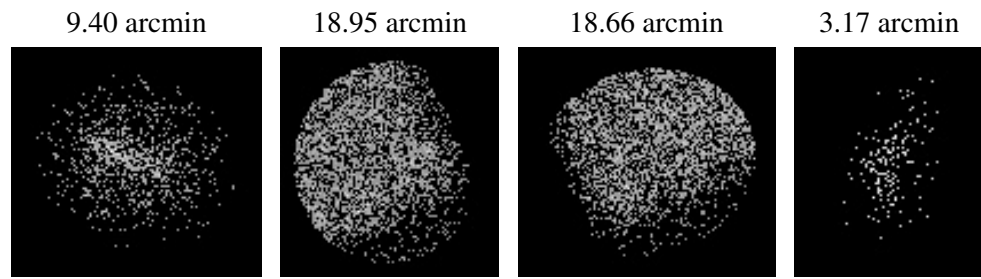
2.5.2 Slot 1



2.5.3 Slot 2



3 Point Sources



A Summary

A.1 Status

V&V Scientist	Jen Lauer
V&V Date (YYYY-MM-DD)	2007.05.27
V&V Edition	1
V&V Disposition and Status	OK
V&V Charge Time	27.804

A.2 Comments

Gratings insertion failure: this observation was originally intended to be LETG.