

V&V Reference Report

L2 ASCDS Version : 8.4.5

Observation 444 - L2 Version 4
Chandra X-Ray Center

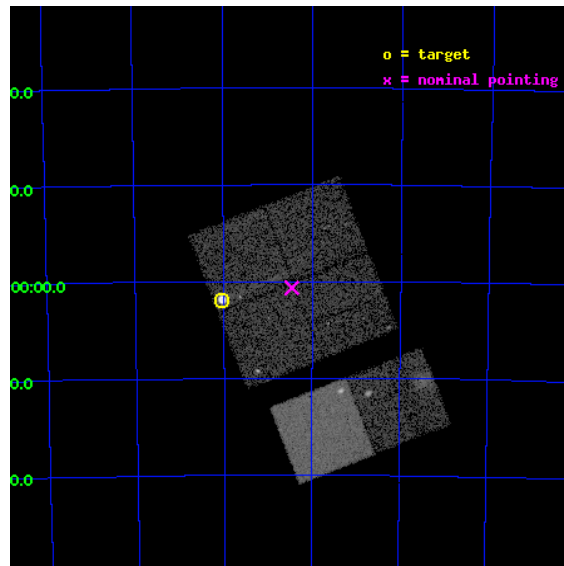
L2 Processing Date : Aug 26 2012

Contents

1	Front	2
2	OBI	3
2.1	OBI	3
2.1.1	Images	3
2.1.2	Bias	3
2.1.3	Parameters	4
2.1.4	Events	4
2.2	Compared Parameters	5
2.3	Aspect	6
2.4	Star Slots	9
2.4.1	Slot 3	9
2.4.2	Slot 4	10
2.4.3	Slot 5	11
2.4.4	Slot 6	12
2.4.5	Slot 7	13
2.5	FID Slots	14
2.5.1	Slot 0	14
2.5.2	Slot 1	15
2.5.3	Slot 2	16
A	Summary	17
A.1	Status	17
A.2	Comments	17

1 Front

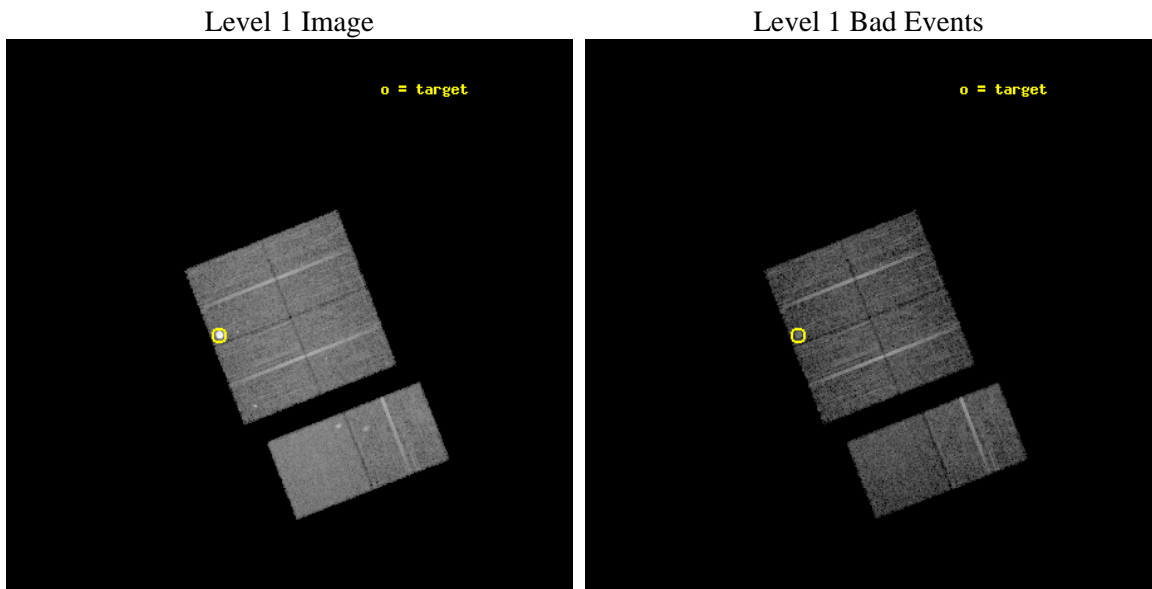
seq_num	590113	Sequence number
obs_id	444	Observation id
title	ACIS CHIP RESPONSE TO LINES WITH E=0.6-1.5 KEV	Proposal title
observer	Dr. CXC Calibration	Principal investigator
object	E0102-72.3 [Chip I1, T=120, Offsets=-7,-1,0]	Source name
dtcycle	0	
cycle	P	events from which exps? Prim/Second/Both
ra_targ	16.01	Observer's specified target RA [deg]
dec_targ	-72.032028	Observer's specified target Dec [deg]
ra_nom	15.614651980509	Nominal RA [deg]
dec_nom	-72.010926168169	Nominal Dec [deg]
roll_nom	158.67860907765	Nominal Roll [deg]
revision	4	Processing version of data
ontime	8479.2837707996	Sum of GTIs [s]
livetime	8371.9139740821	Livetime [s]
ontime0	8479.2427307963	Sum of GTIs [s]
ontime1	8479.2837707996	Sum of GTIs [s]
ontime2	8479.3248108029	Sum of GTIs [s]
ontime3	8479.3658507913	Sum of GTIs [s]
ontime6	8479.4479307979	Sum of GTIs [s]
ontime7	8479.4068907946	Sum of GTIs [s]
l2events	89660	Number of level 2 events



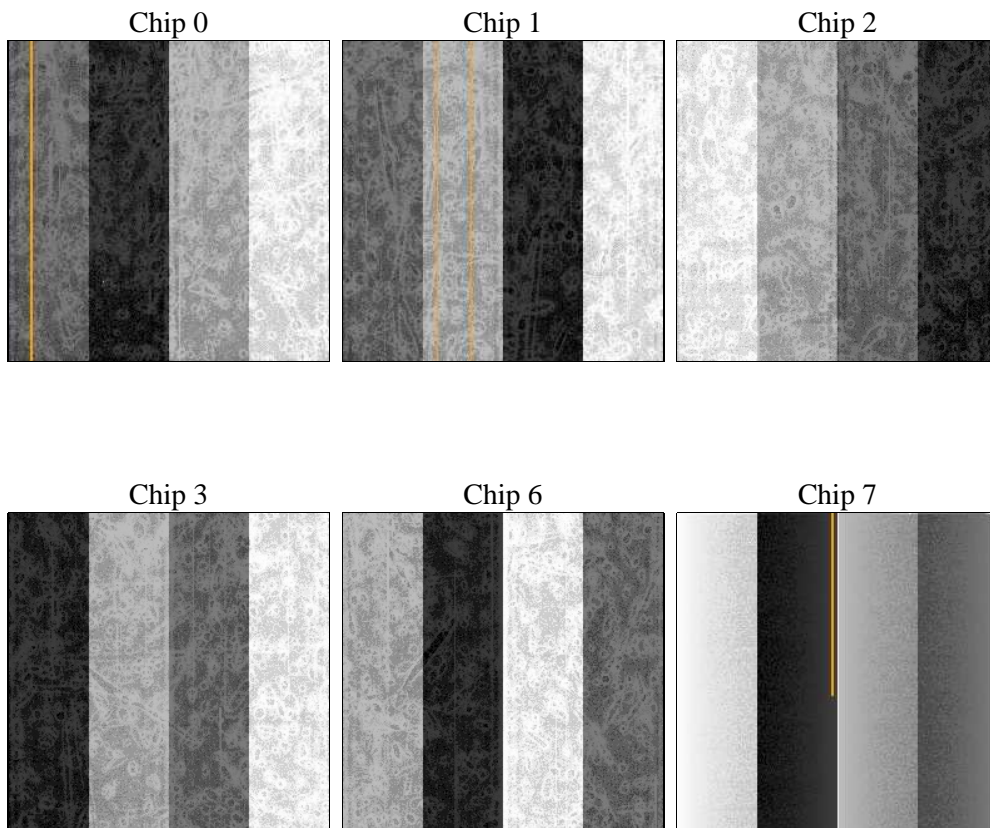
2 OBI

2.1 OBI

2.1.1 Images



2.1.2 Bias



2.1.3 Parameters

obi_num	1	Obi number	sched_exp_time	8300.000000	[s] Scheduled observation exposure time
ascdsver	8.4.5	Processing system revision	ontime	8479.2837707996	Sum of GTIs [s]
caldsver	4.5.1.1	 	ontime0	8479.2427307963	Sum of GTIs [s]
date	2012-08-26T20:40:12	Date and time of file creation	ontime1	8479.2837707996	Sum of GTIs [s]
revision	4	Processing version of data	ontime2	8479.3248108029	Sum of GTIs [s]
			ontime3	8479.3658507913	Sum of GTIs [s]
			ontime6	8479.4479307979	Sum of GTIs [s]
			ontime7	8479.4068907946	Sum of GTIs [s]
			l1events	410799	Number of level 1 events

2.1.4 Events

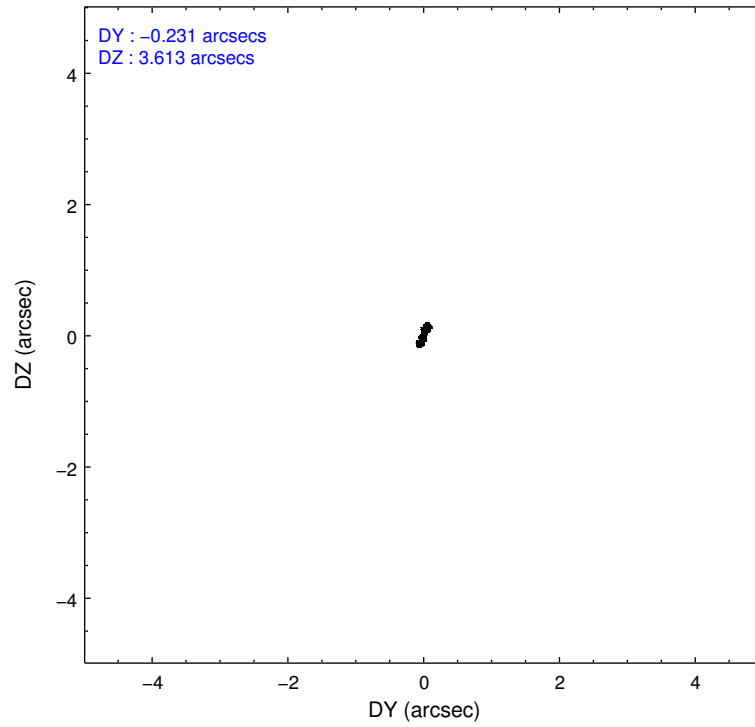
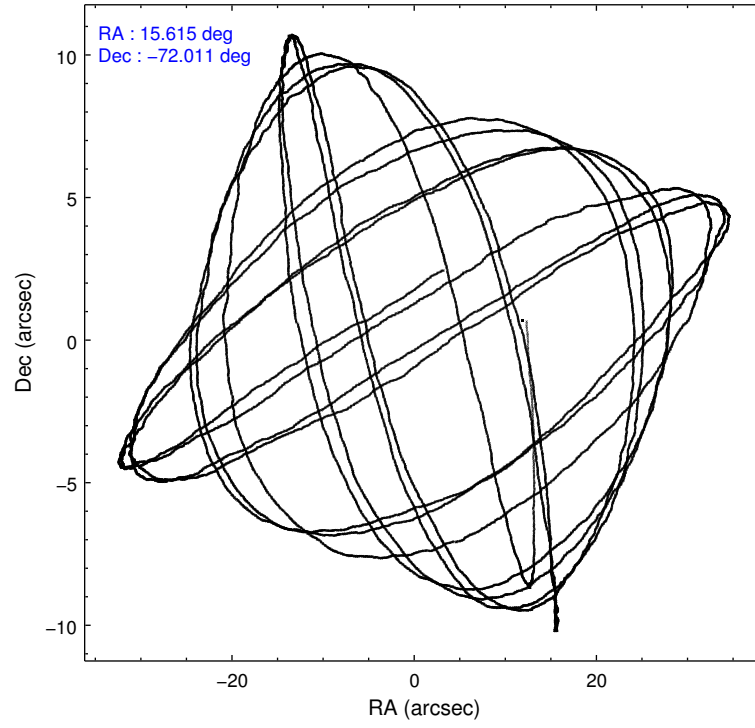
	ccd 0	ccd 1	ccd 2	ccd 3	ccd 6	ccd 7		ccd 0	ccd 1	ccd 2	ccd 3	ccd 6	ccd 7
level 1 events	58370	87694	60585	64265	65432	74453	grade 0 events	3179	28192	3165	3543	4088	3540
rejected events	51209	51962	53655	56918	57354	41882		5%	32%	5%	5%	6%	4%
rejected %	87%	59%	88%	88%	87%	56%	grade 1 events	28	225	27	31	46	79
								0%	0%	0%	0%	0%	0%
							grade 2 events	1446	3385	1370	1330	1394	6616
								2%	3%	2%	2%	2%	8%
							grade 3 events	732	1338	644	691	678	2951
								1%	1%	1%	1%	1%	3%
							grade 4 events	716	1311	649	649	665	2973
								1%	1%	1%	1%	1%	3%
							grade 5 events	1994	2167	1802	2056	2372	6918
								3%	2%	2%	3%	3%	9%
							grade 6 events	1093	1525	1105	1147	1262	16514
								1%	1%	1%	1%	1%	22%
							grade 7 events	49182	49551	51823	54818	54927	34862
								84%	56%	85%	85%	83%	46%

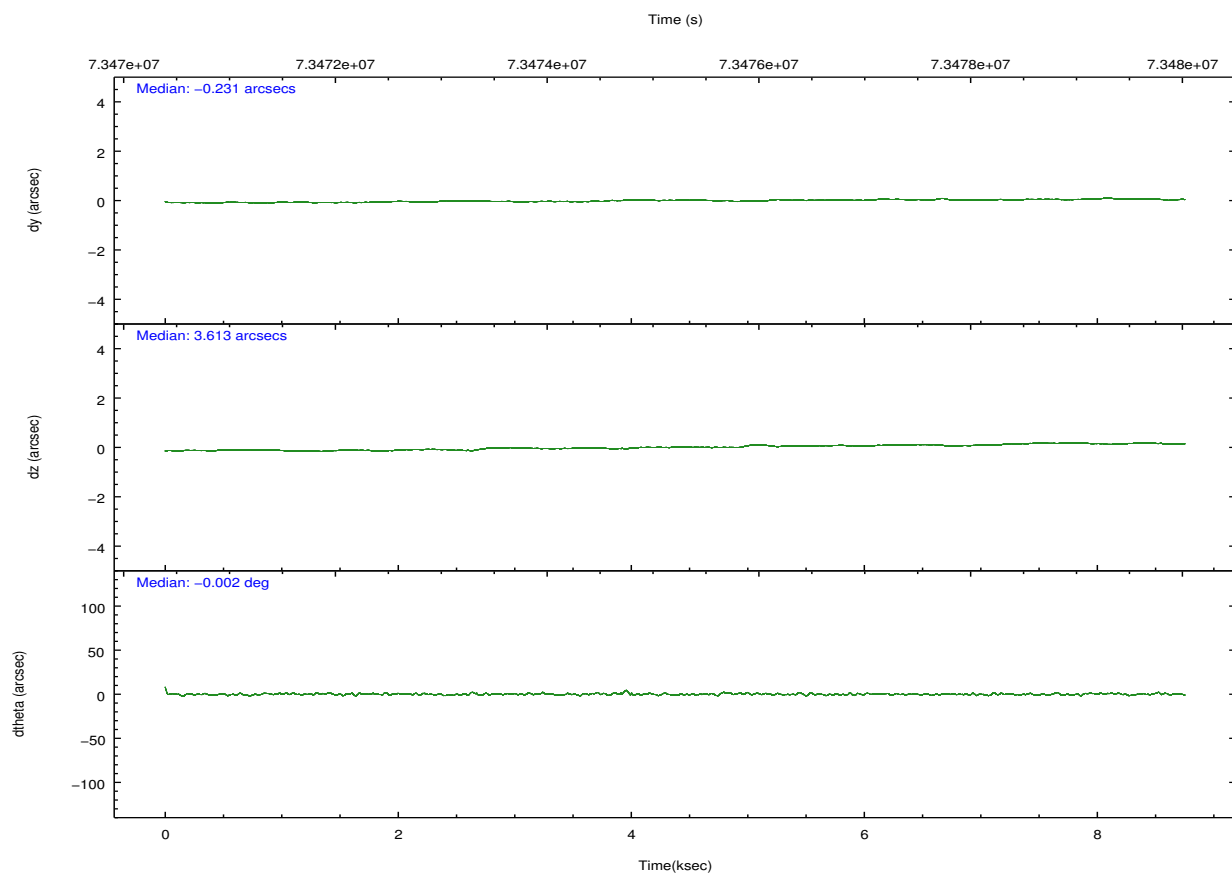
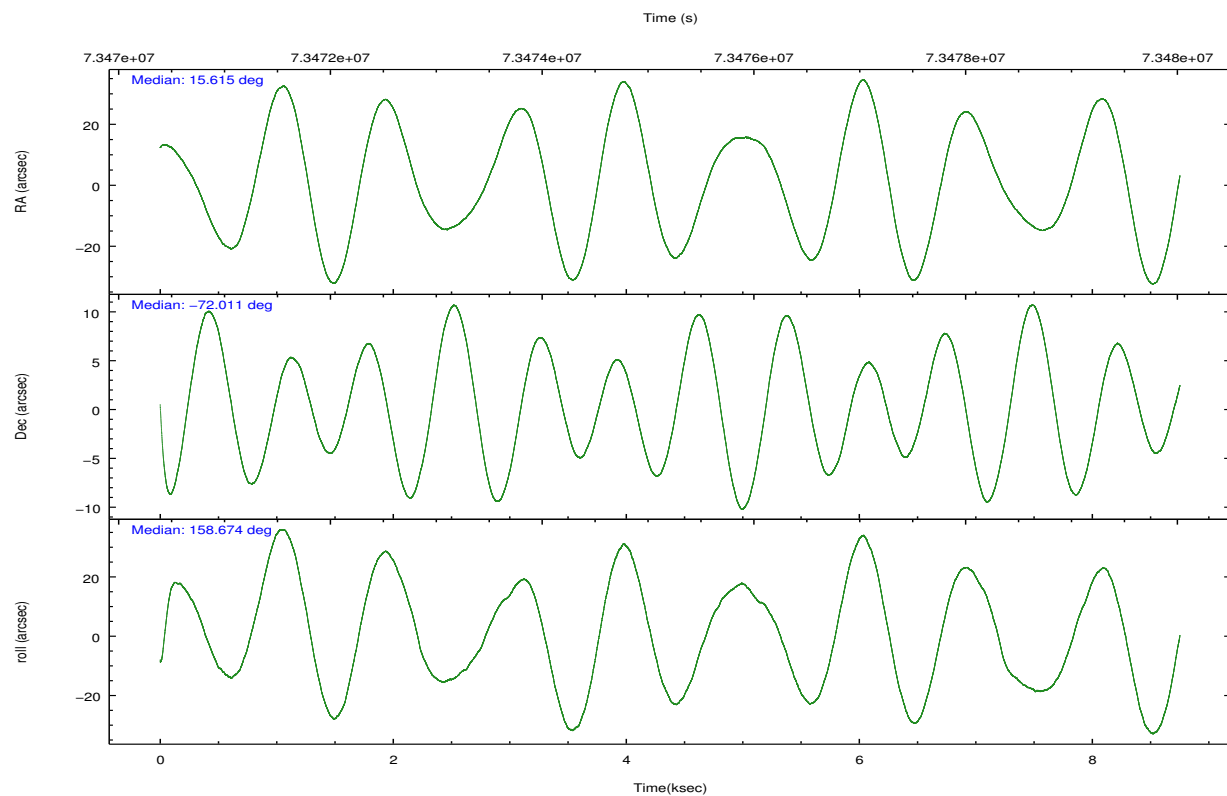
2.2 Compared Parameters

Parameter	Planned	Actual
Instrument	ACIS	ACIS
Detector	ACIS-012367	ACIS-012367
Grating	NONE	NONE
Data mode	FAINT	FAINT
Observation mode	POINTING	POINTING
[deg] Pointing RA	15.703281	15.61465198050918
[deg] Pointing Dec	-72.006929	-72.01092616816874
[deg] Pointing Roll	158.554256	158.6786090776452
[mm] SIM focus pos	-0.782348	-0.7809083437167272
[mm] SIM defocus	0	0.001439871863259334
[mm] SIM translation stage pos	-233.592463	-233.5874344608287
[mm] SIM translation stage offset	0	-0.005018542100998502
[s] Observation start time (MET)	73471284.184000	73470047.80627801
Observation start date	2000-04-30T08:40:20	2000-04-30T08:20:47
[s] Observation end time (MET)	73479584.184000	73479718.681632
Observation end date	2000-04-30T10:58:40	2000-04-30T11:01:58
Read mode	TIMED	TIMED

Parameter	Planned	Actual
Obspar format version number	7	7
Obspar file type	PREDICTED	ACTUAL
Obspar update status	NONE	UPDATED
Number of optional ACIS chips dropped	0	0
On-chip summing requested	N	N
Subarray requested	NONE	NONE
Alternating exposures requested	N	N
[s] Primary exposure time	0.000000	3.2

2.3 Aspect



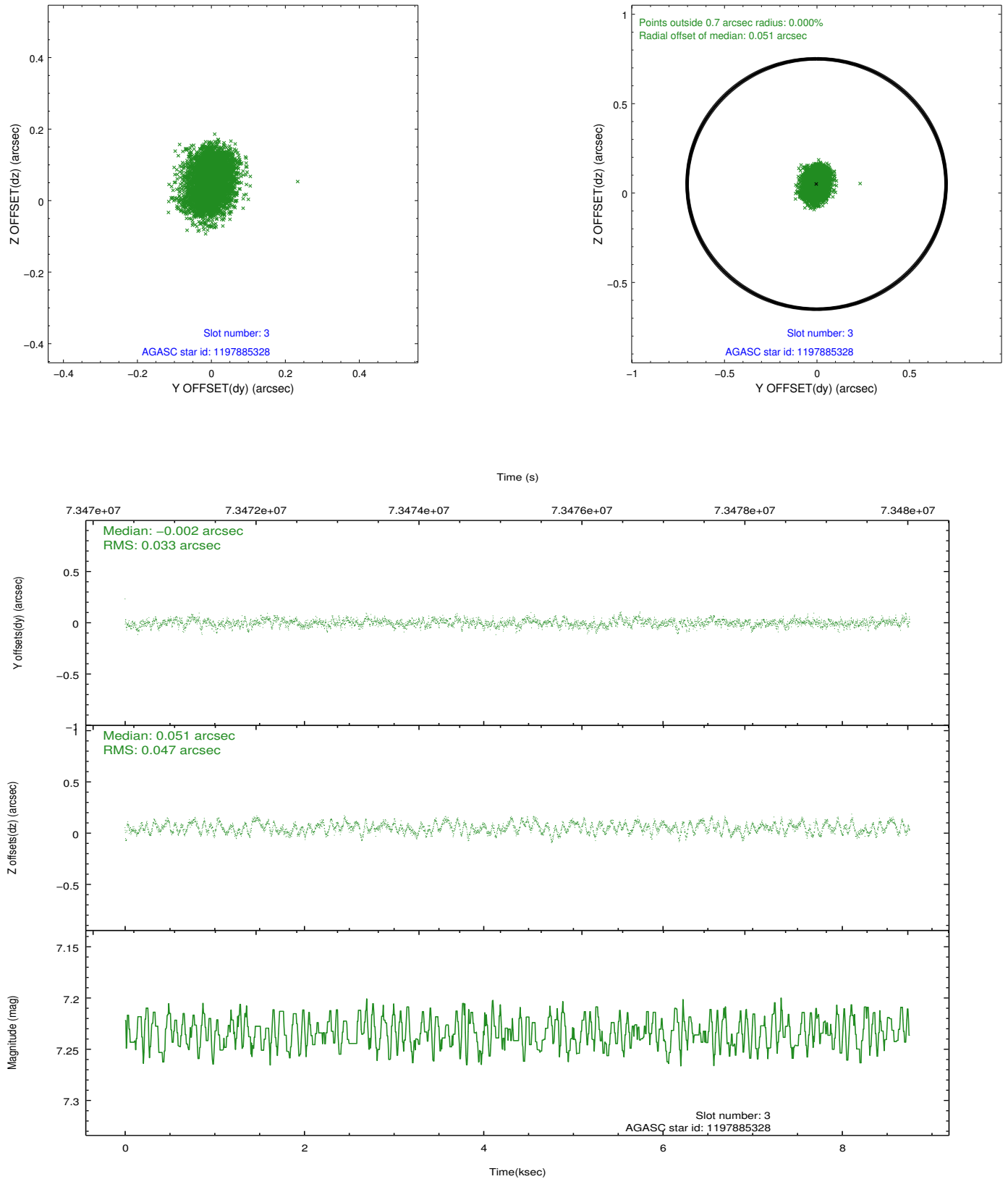


Slot Statistics

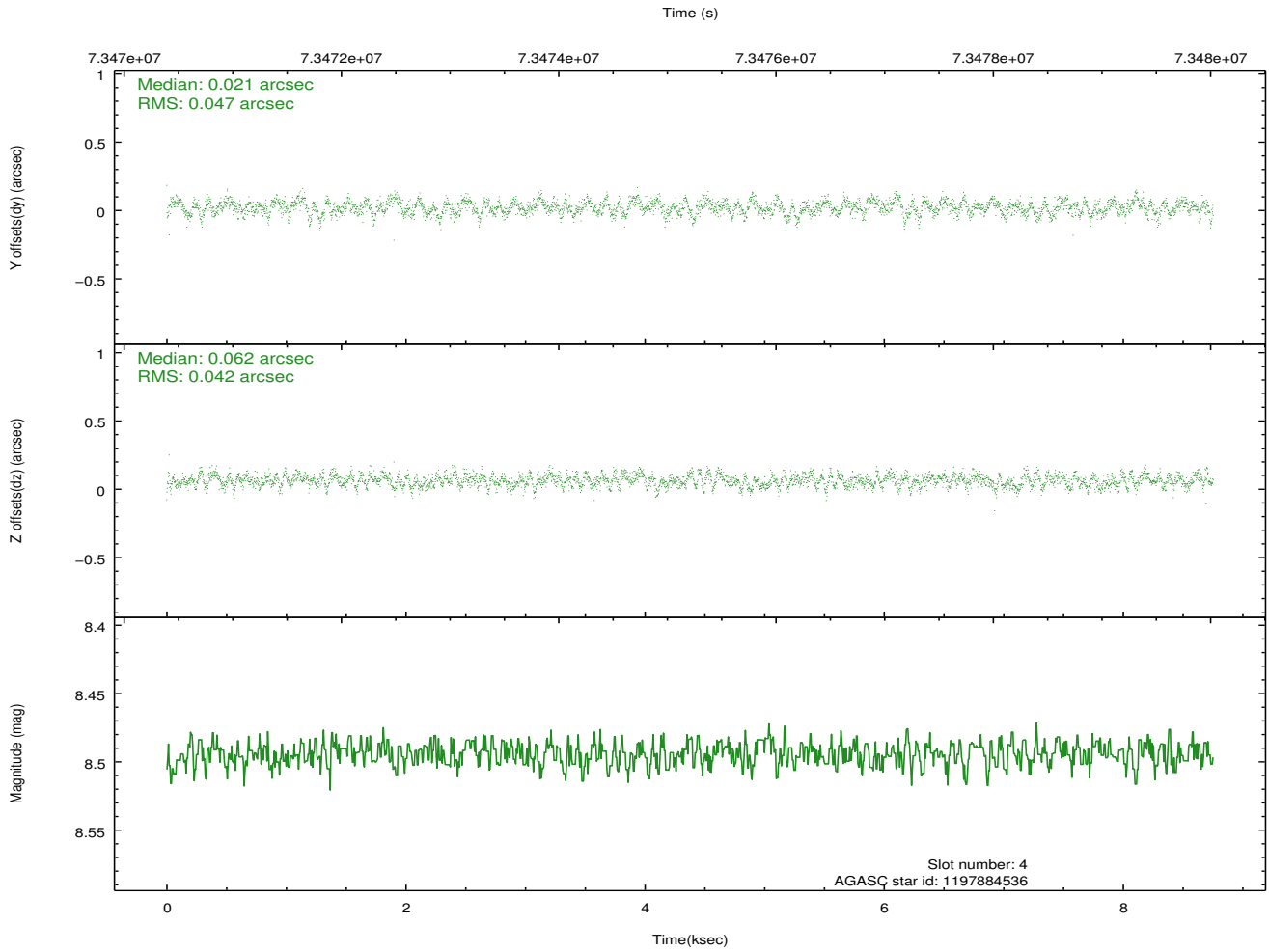
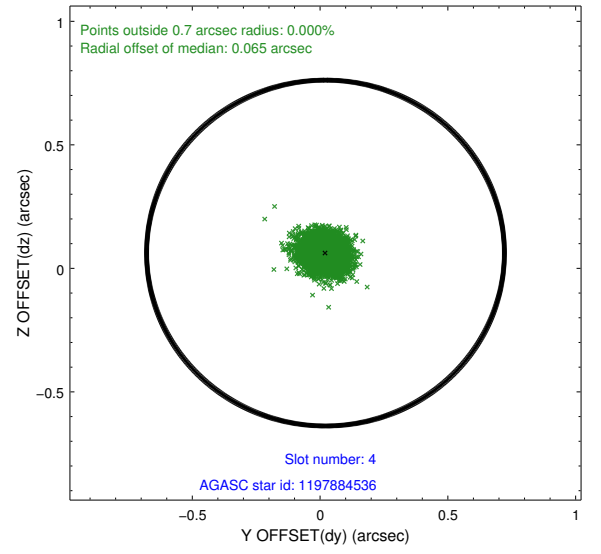
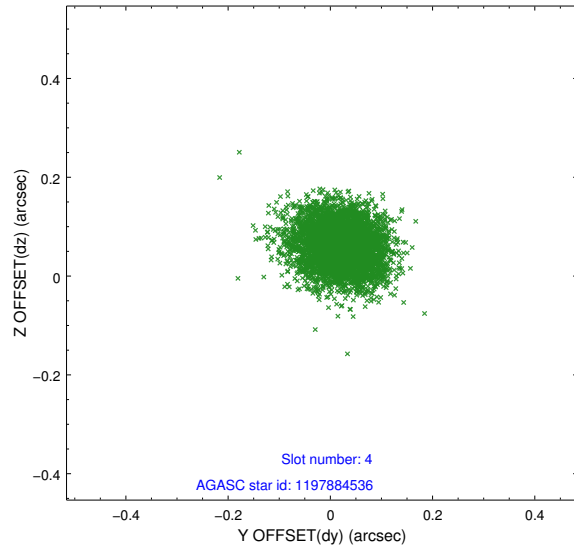
slot	status	id	mag	n_pts	med_dy	med_dz	dr1	dr2	ra	dec	mean_y	mean_z
0	FID	ACIS-I-2	7.15	2134	-0.091	-0.020	0.007	0.014	0.000000	0.000000	-754.14	-833.30
1	FID	ACIS-I-4	7.18	2134	0.009	0.062	0.009	0.015	0.000000	0.000000	2159.74	1072.63
2	FID	ACIS-I-6	7.26	2134	-0.017	0.021	0.009	0.016	0.000000	0.000000	406.83	1715.49
3	GUIDE	1197885328	7.23	4269	-0.002	0.051	0.062	0.098	16.283090	-71.733943	-250.50	-1151.36
4	GUIDE	1197884536	8.49	4269	0.021	0.062	0.067	0.107	17.160729	-71.835289	-1303.37	-1155.42
5	GUIDE	1197750640	9.74	4265	0.079	-0.070	0.087	0.142	15.758835	-72.088048	-164.08	248.60
6	GUIDE	1197749664	9.56	4267	0.023	-0.011	0.083	0.136	15.809015	-72.366369	-580.40	1161.93
7	GUIDE	1197750544	10.74	4268	-0.121	-0.034	0.160	0.259	13.428125	-72.143881	2139.26	1421.15

2.4 Star Slots

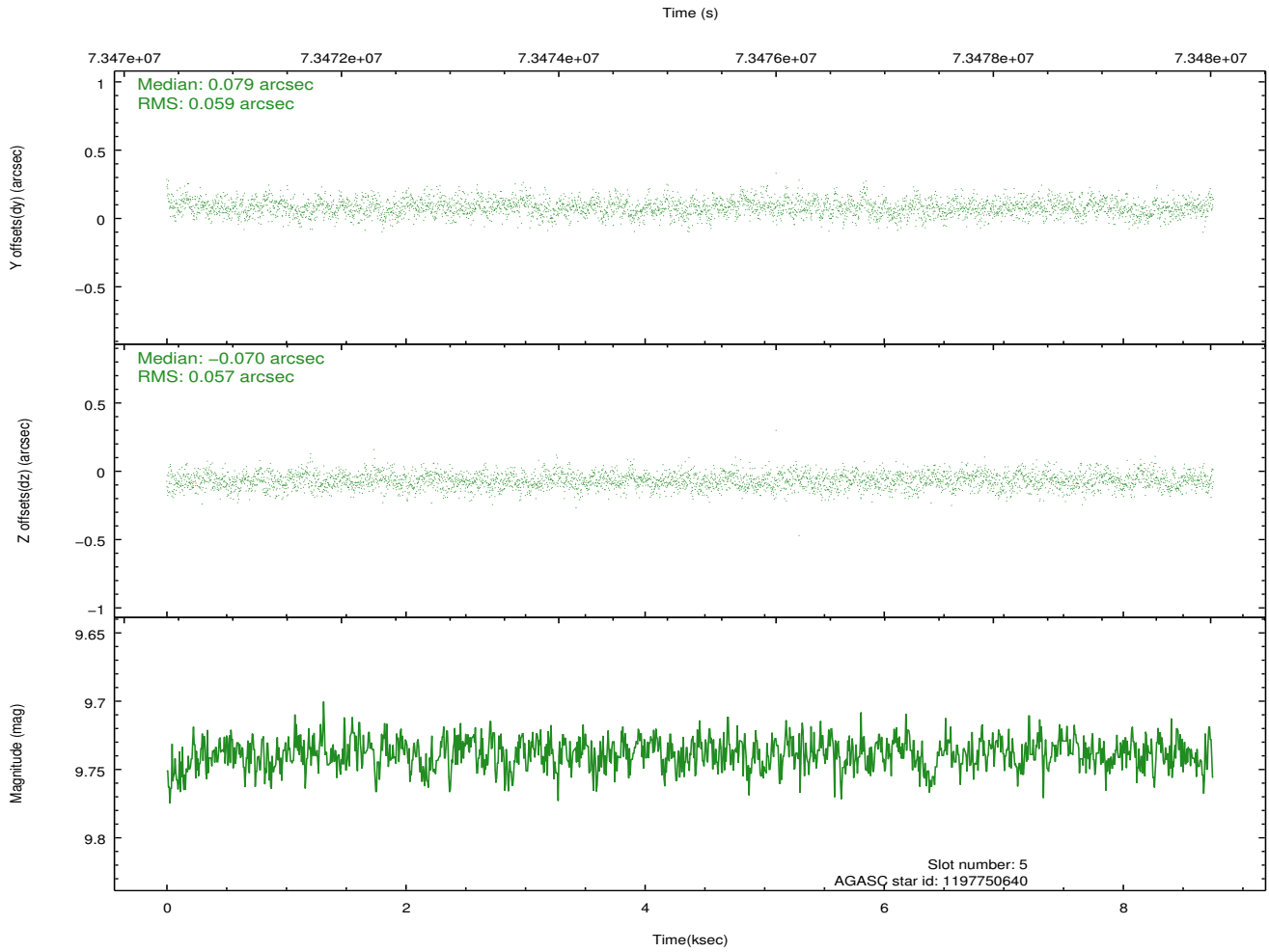
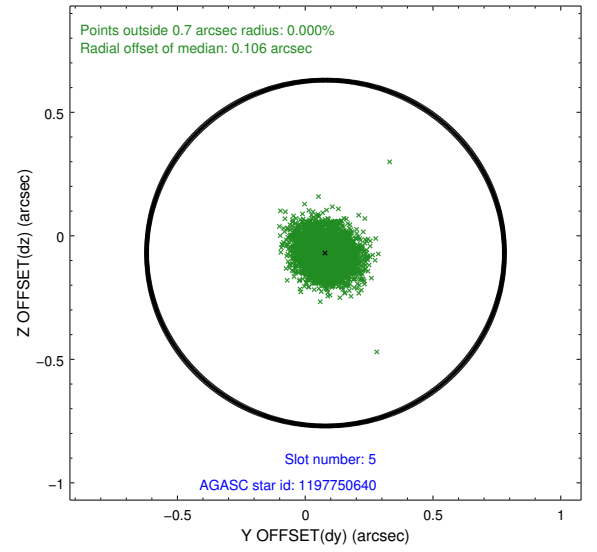
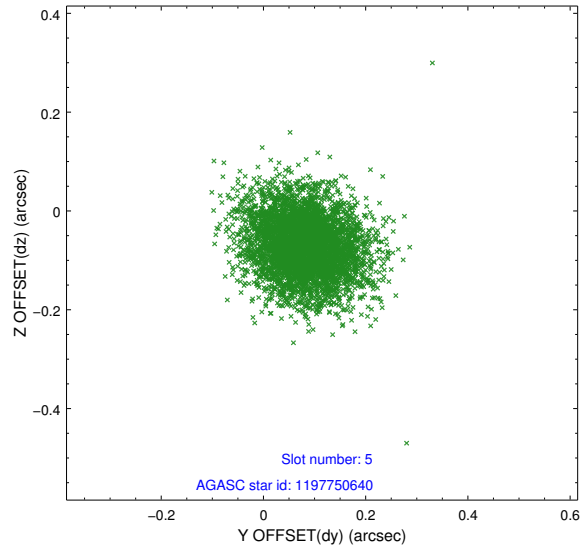
2.4.1 Slot 3



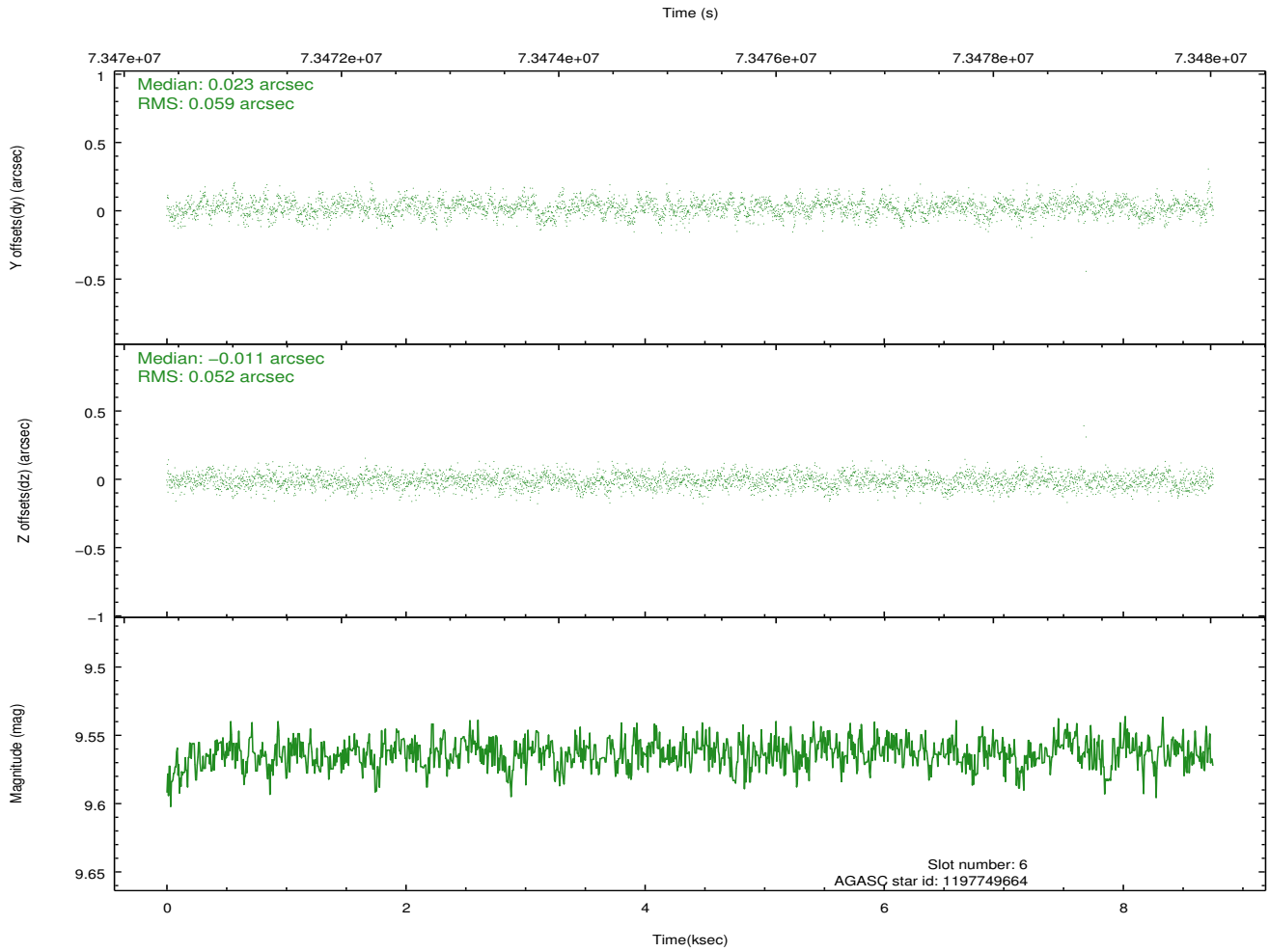
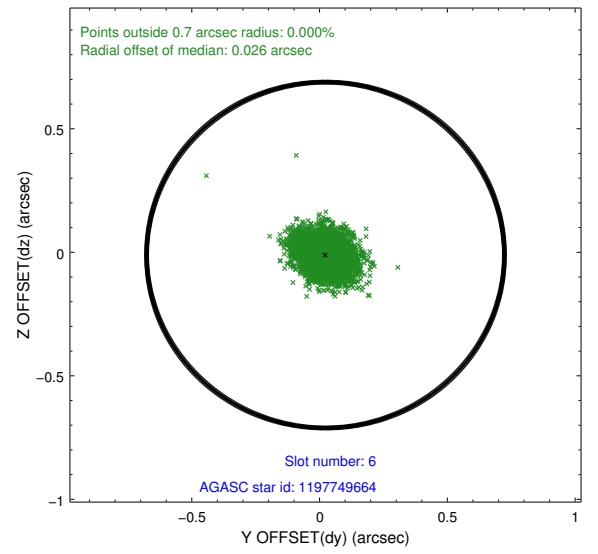
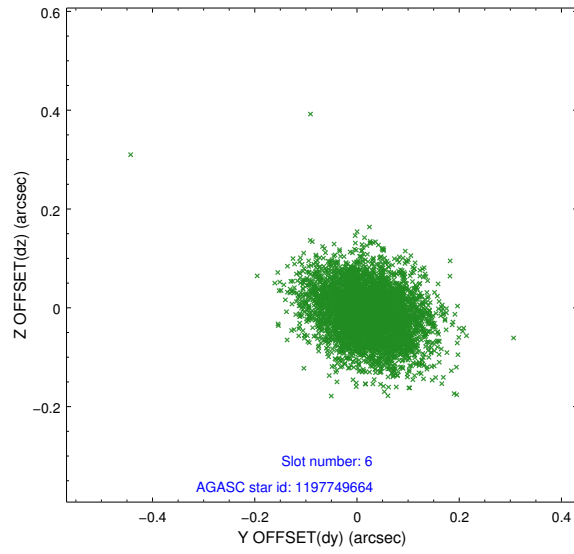
2.4.2 Slot 4



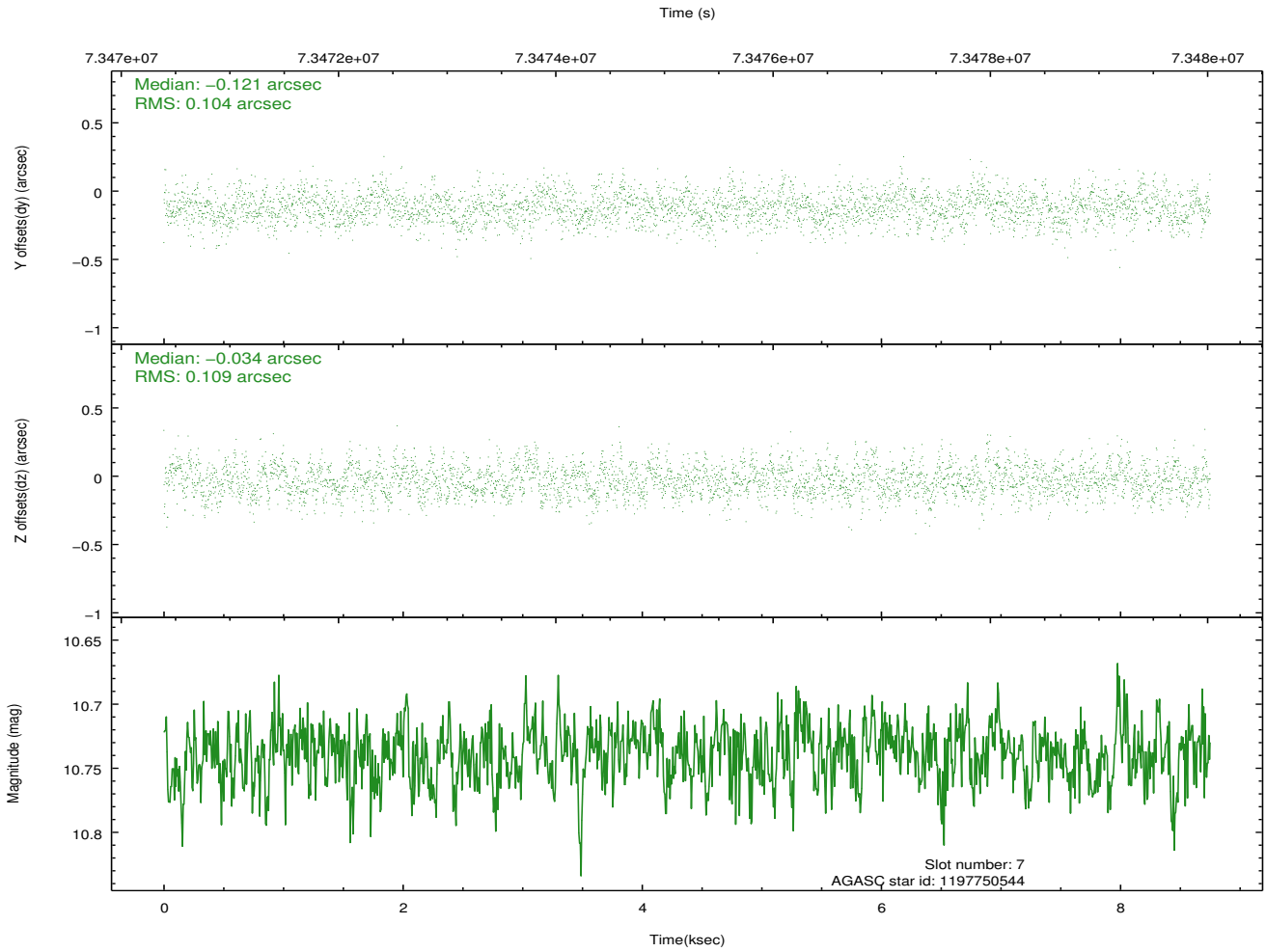
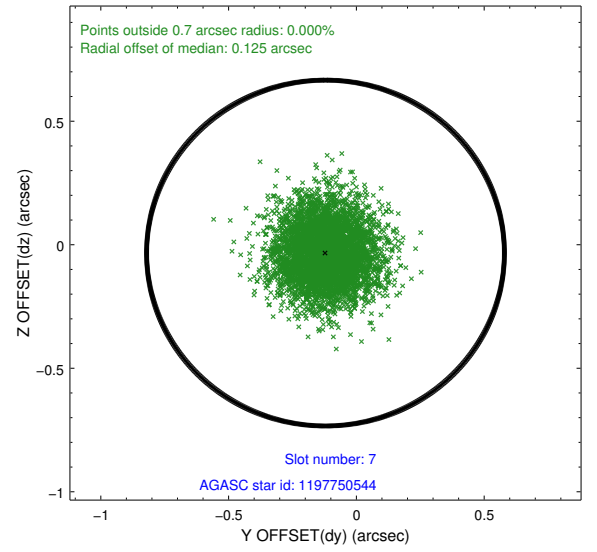
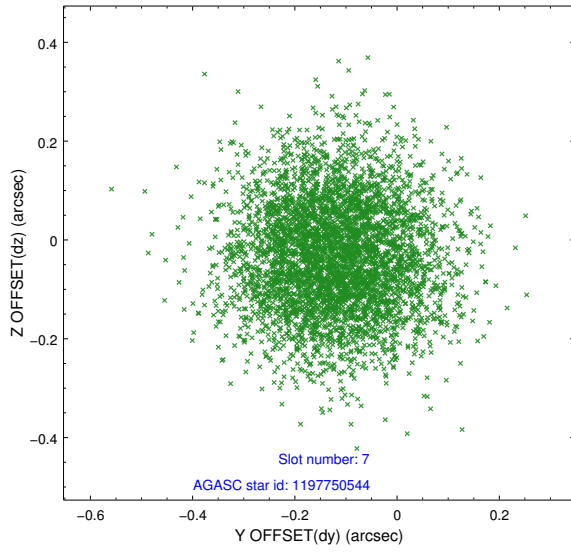
2.4.3 Slot 5



2.4.4 Slot 6

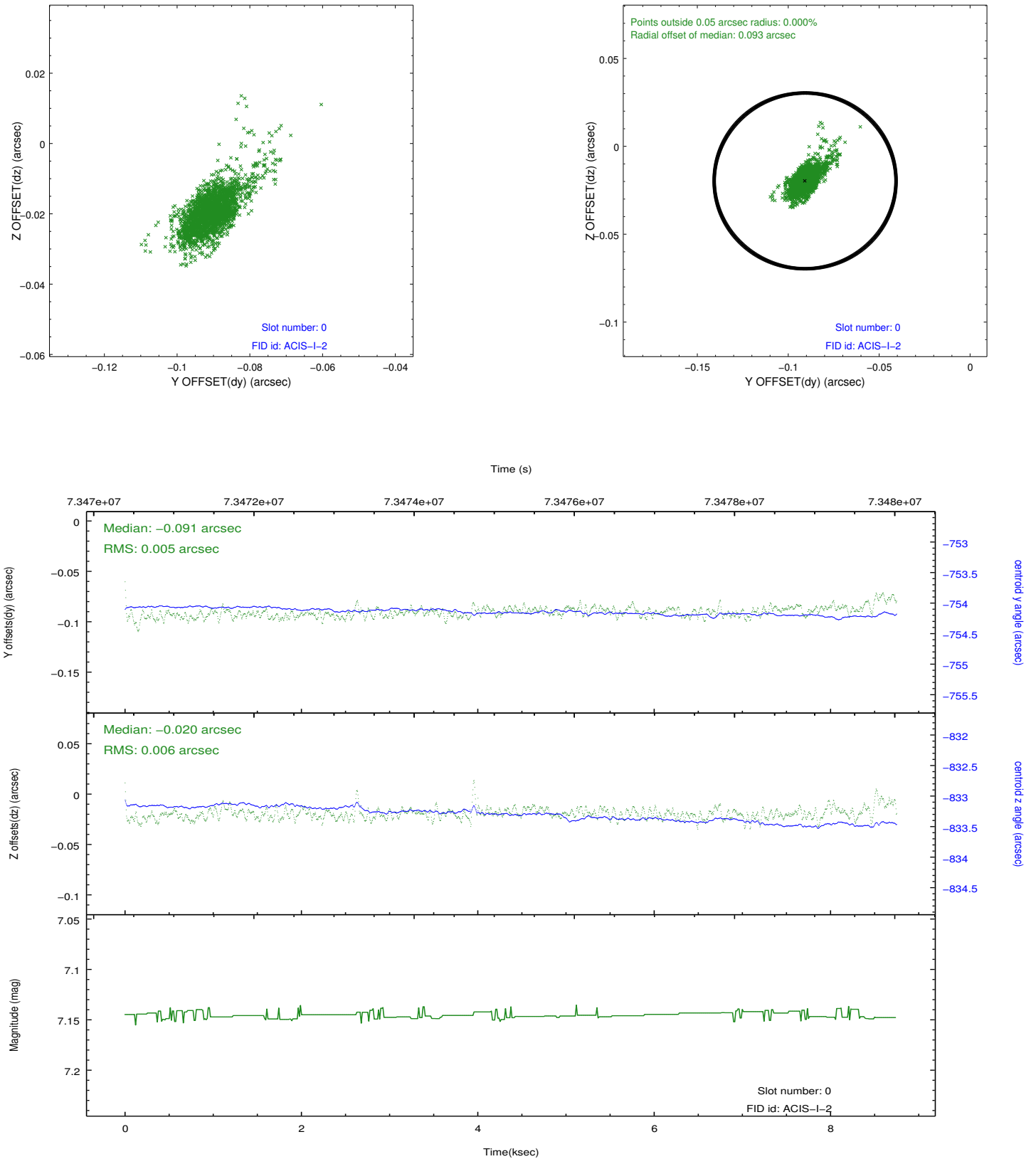


2.4.5 Slot 7

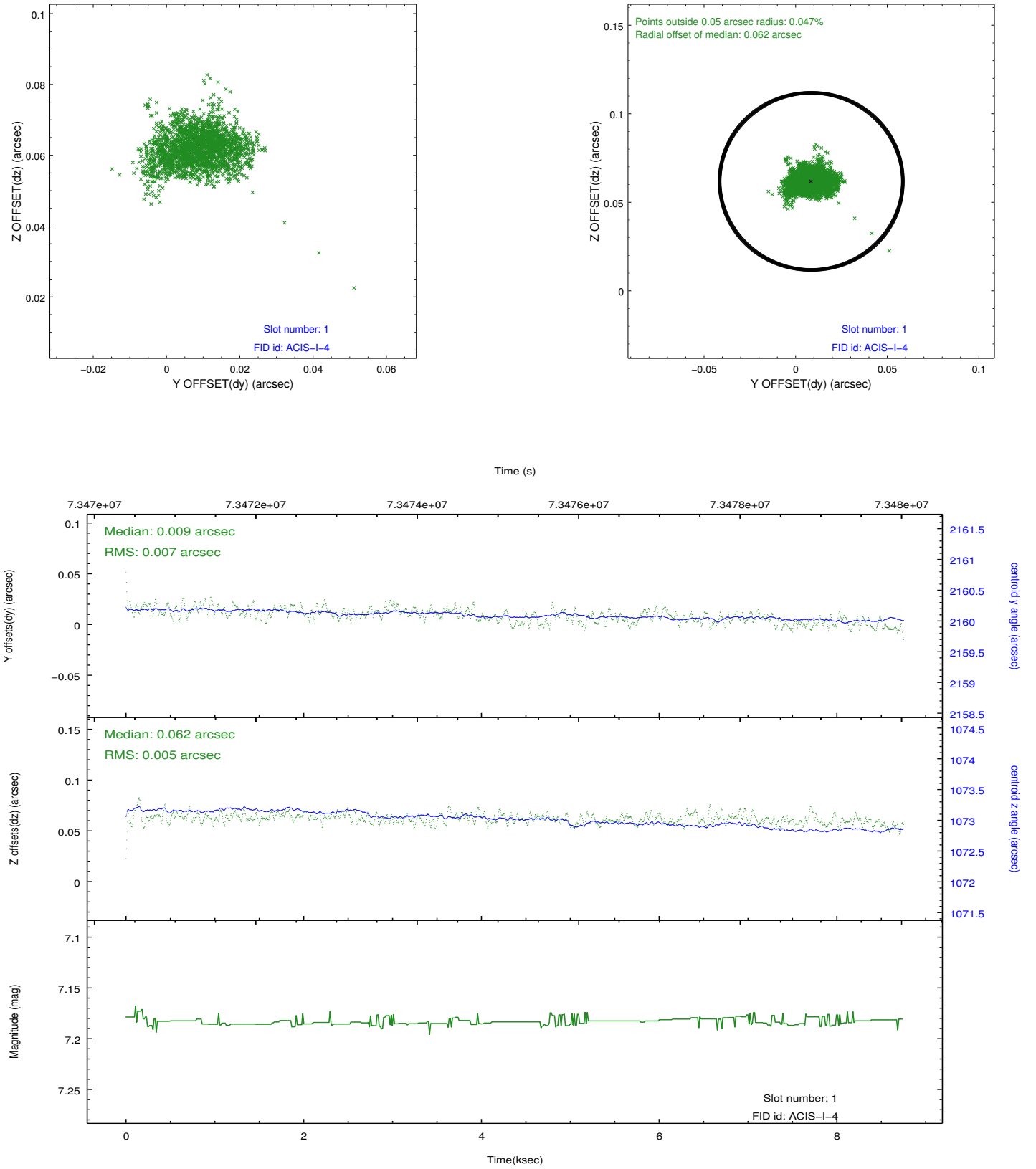


2.5 FID Slots

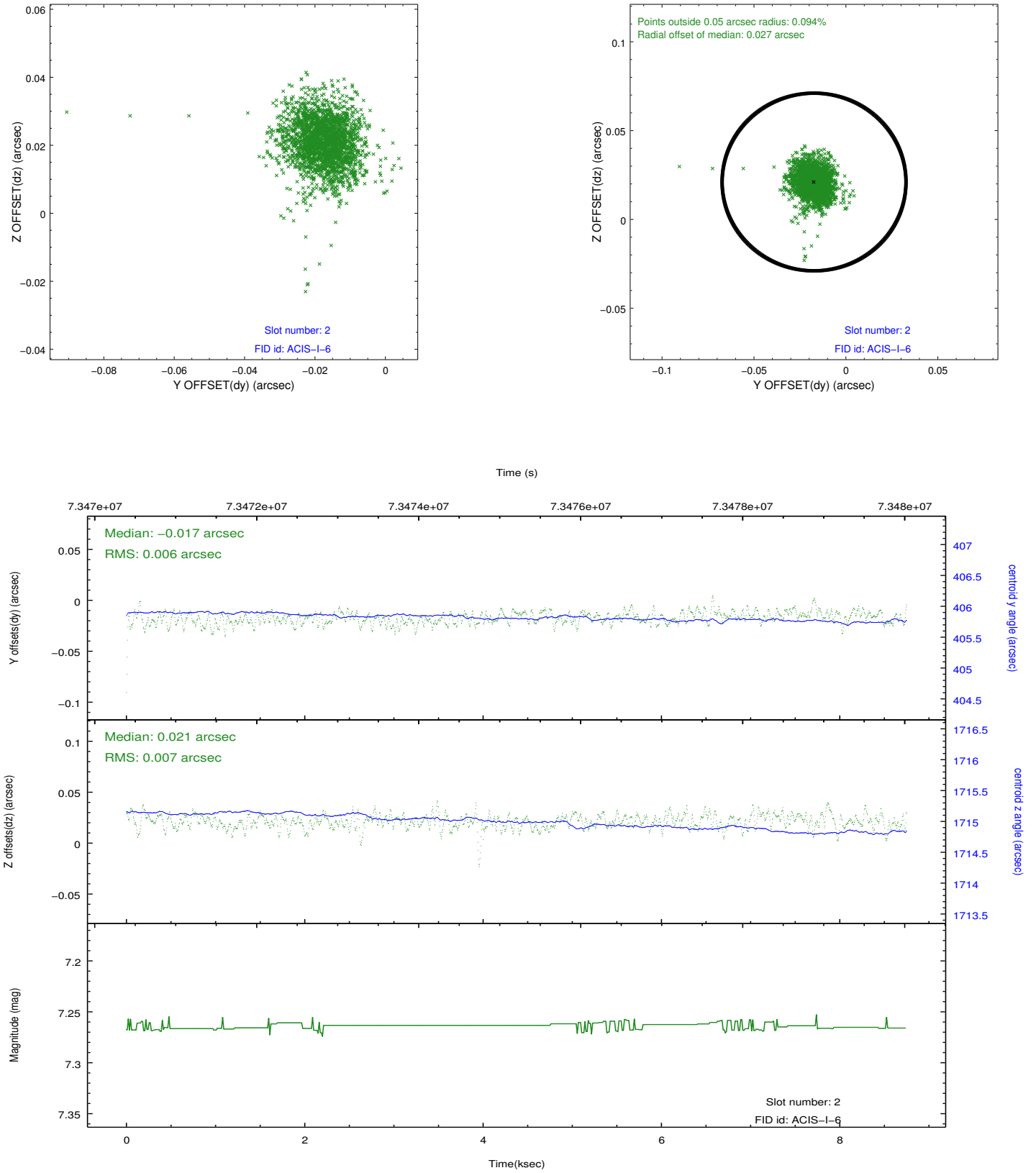
2.5.1 Slot 0



2.5.2 Slot 1



2.5.3 Slot 2



A Summary

A.1 Status

V&V Scientist	Jen Lauer
V&V Date (YYYY-MM-DD)	2012.08.29
V&V Edition	1
V&V Disposition and Status	OK
V&V Charge Time	8.48

A.2 Comments