

V&V Reference Report

L2 ASCDS Version : 8.4.5

Observation 420 - L2 Version 4
Chandra X-Ray Center

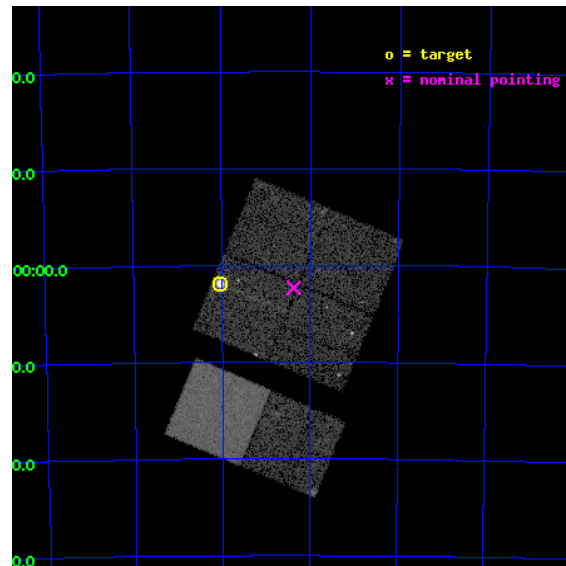
L2 Processing Date : Aug 24 2012

Contents

1	Front	2
2	OBI	3
2.1	OBI	3
2.1.1	Images	3
2.1.2	Bias	3
2.1.3	Parameters	4
2.1.4	Events	4
2.2	Compared Parameters	5
2.3	Aspect	6
2.4	Star Slots	9
2.4.1	Slot 3	9
2.4.2	Slot 4	10
2.4.3	Slot 5	11
2.4.4	Slot 6	12
2.4.5	Slot 7	13
2.5	FID Slots	14
2.5.1	Slot 0	14
2.5.2	Slot 1	15
2.5.3	Slot 2	16
A	Summary	17
A.1	Status	17
A.2	Comments	17

1 Front

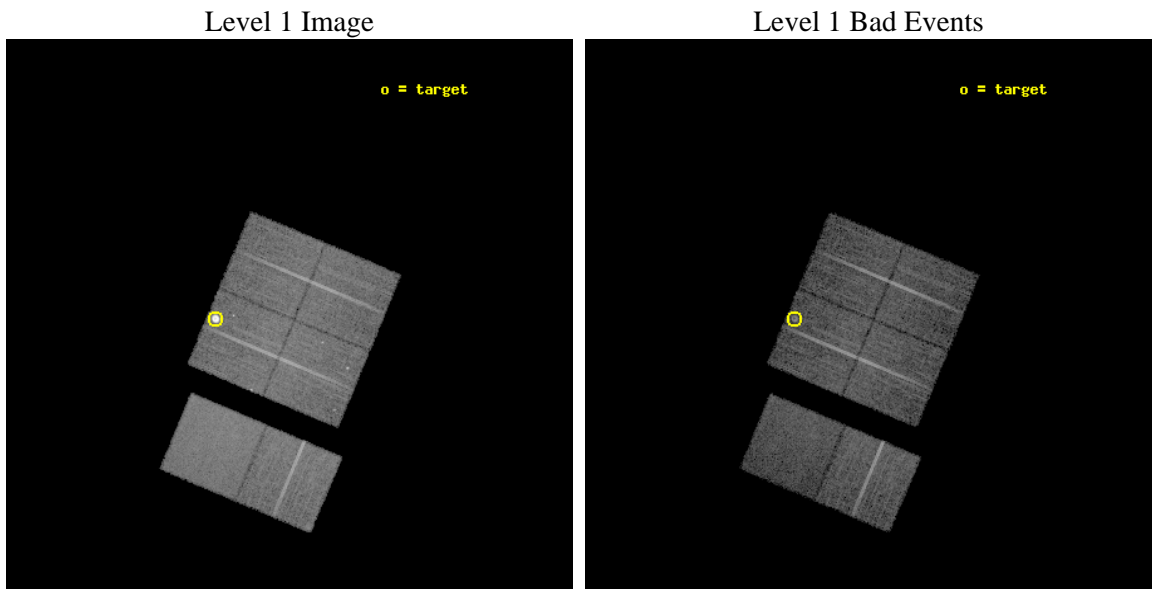
seq_num	590110	Sequence number
obs_id	420	Observation id
title	ACIS CHIP RESPONSE TO LINES WITH E=0.6-1.5 KEV	Proposal title
observer	Dr. CXC Calibration	Principal investigator
object	E0102-72.3 [Chip I3, T=120, Offsets=-7,2,0]	Source name
dtcycle	0	
cycle	P	events from which exps? Prim/Second/Both
ra_targ	16.01	Observer's specified target RA [deg]
dec_targ	-72.032028	Observer's specified target Dec [deg]
ra_nom	15.592413390805	Nominal RA [deg]
dec_nom	-72.038703478711	Nominal Dec [deg]
roll_nom	202.73707570329	Nominal Roll [deg]
revision	4	Processing version of data
ontime	10396.267127976	Sum of GTIs [s]
livetime	10264.623333721	Livetime [s]
ontime0	10393.026048109	Sum of GTIs [s]
ontime1	10393.02607803	Sum of GTIs [s]
ontime2	10396.267187819	Sum of GTIs [s]
ontime3	10396.267127976	Sum of GTIs [s]
ontime6	10399.507978499	Sum of GTIs [s]
ontime7	10399.508028343	Sum of GTIs [s]
l2events	110632	Number of level 2 events



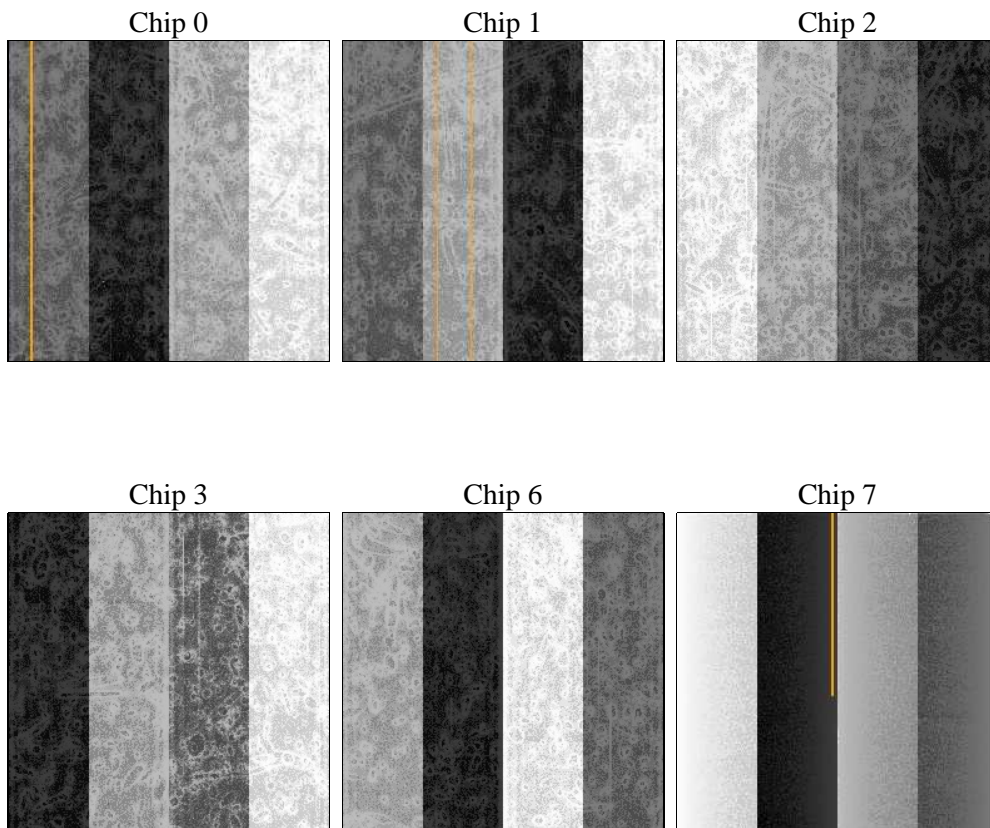
2 OBI

2.1 OBI

2.1.1 Images



2.1.2 Bias



2.1.3 Parameters

obi_num	0	Obi number	sched_exp_time	10000.000000	[s] Scheduled observation exposure time
ascdsver	8.4.5	Processing system revision	ontime	10396.267127976	Sum of GTIs [s]
caldsver	4.5.1.1	 	ontime0	10393.026048109	Sum of GTIs [s]
date	2012-08-24T05:02:49	Date and time of file creation	ontime1	10393.02607803	Sum of GTIs [s]
revision	4	Processing version of data	ontime2	10396.267187819	Sum of GTIs [s]
			ontime3	10396.267127976	Sum of GTIs [s]
			ontime6	10399.507978499	Sum of GTIs [s]
			ontime7	10399.508028343	Sum of GTIs [s]
			l1events	543606	Number of level 1 events

2.1.4 Events

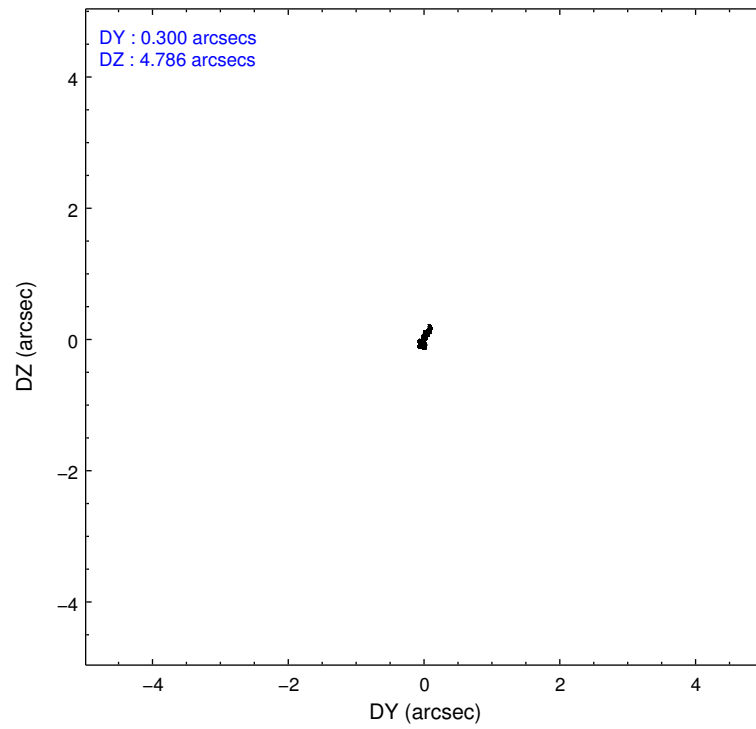
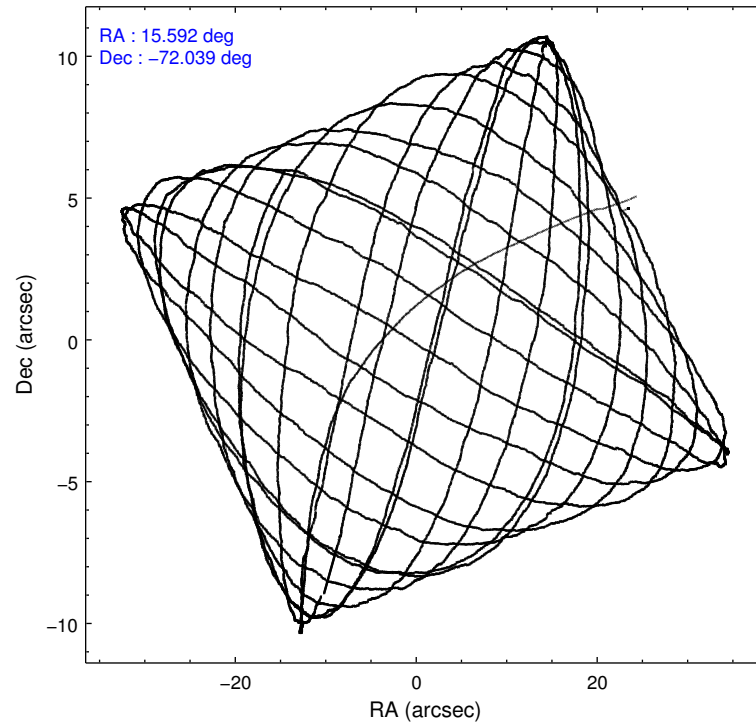
	ccd 0	ccd 1	ccd 2	ccd 3	ccd 6	ccd 7		ccd 0	ccd 1	ccd 2	ccd 3	ccd 6	ccd 7
level 1 events	76342	75442	86804	121835	88002	95181	grade 0 events	4159	4187	4696	37500	4257	4183
rejected events	67840	66567	77622	76269	79268	57908		5%	5%	5%	30%	4%	4%
rejected %	88%	88%	89%	62%	90%	60%	grade 1 events	32	38	46	335	45	93
								0%	0%	0%	0%	0%	0%
							grade 2 events	1770	1787	2009	4474	1741	7712
								2%	2%	2%	3%	1%	8%
							grade 3 events	919	1045	895	1587	953	3779
								1%	1%	1%	1%	1%	3%
							grade 4 events	902	987	862	1547	904	3839
								1%	1%	0%	1%	1%	4%
							grade 5 events	2524	2623	2423	2781	3196	9137
								3%	3%	2%	2%	3%	9%
							grade 6 events	1484	1670	1432	1838	1632	21053
								1%	2%	1%	1%	1%	22%
							grade 7 events	64552	63105	74441	71773	75274	45385
								84%	83%	85%	58%	85%	47%

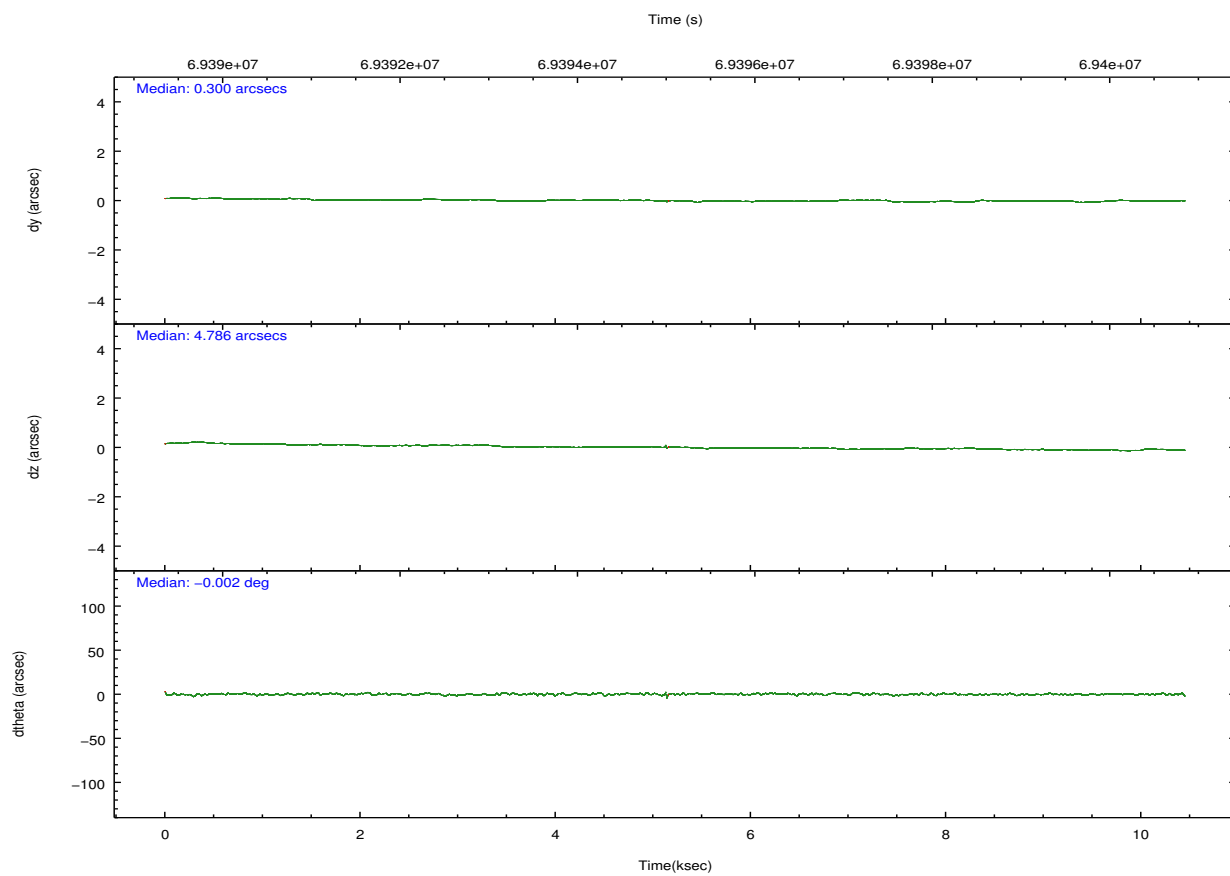
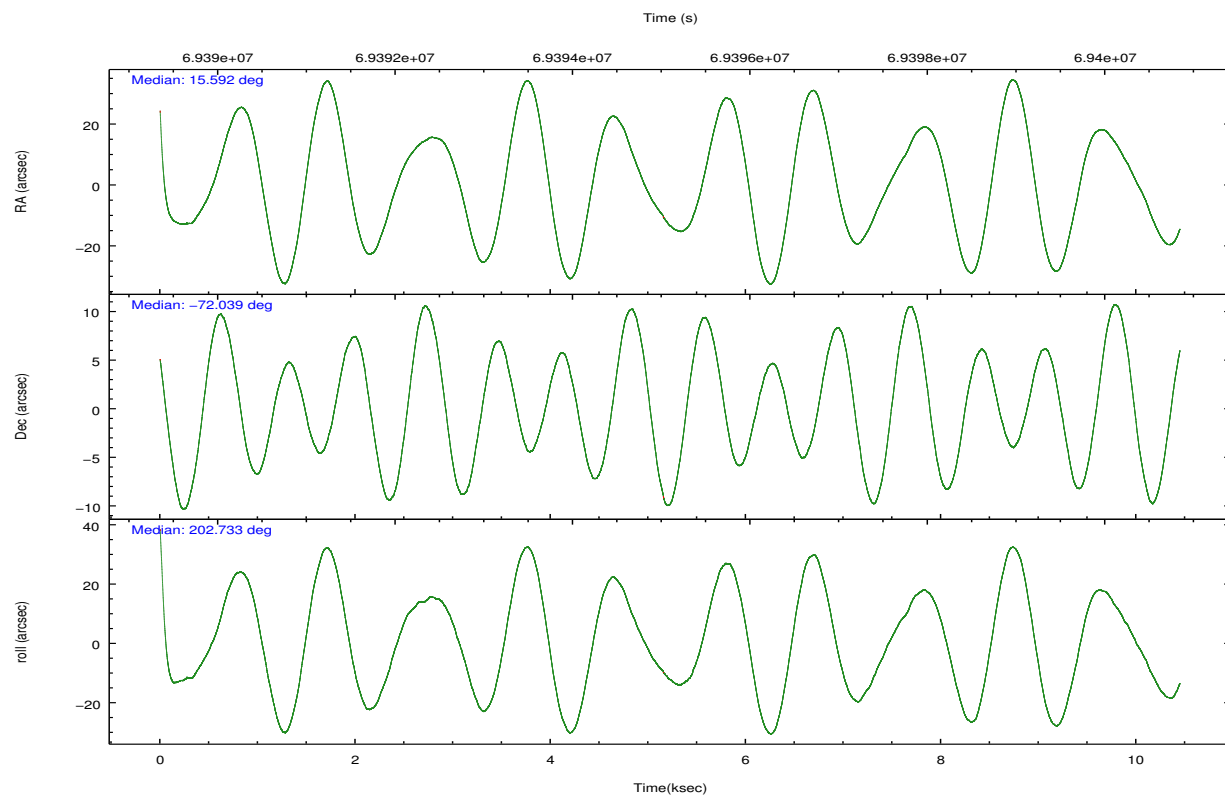
2.2 Compared Parameters

Parameter	Planned	Actual
Instrument	ACIS	ACIS
Detector	ACIS-012367	ACIS-012367
Grating	NONE	NONE
Data mode	VFAINT	VFAINT
Observation mode	POINTING	POINTING
[deg] Pointing RA	15.647286	15.59241339080495
[deg] Pointing Dec	-72.016803	-72.03870347871067
[deg] Pointing Roll	202.580564	202.7370757032907
[mm] SIM focus pos	-0.782348	-0.7809083437167272
[mm] SIM defocus	0	0.001439871863259334
[mm] SIM translation stage pos	-233.592463	-233.5874344608287
[mm] SIM translation stage offset	0	-0.005018542100998502
[s] Observation start time (MET)	69390325.184000	69388512.51928701
Observation start date	2000-03-14T03:04:21	2000-03-14T02:35:12
[s] Observation end time (MET)	69400325.184000	69400950.38224199
Observation end date	2000-03-14T05:51:01	2000-03-14T06:02:30
Read mode	TIMED	TIMED

Parameter	Planned	Actual
Obspar format version number	7	7
Obspar file type	PREDICTED	ACTUAL
Obspar update status	NONE	UPDATED
Number of optional ACIS chips dropped	0	0
On-chip summing requested	N	N
Subarray requested	NONE	NONE
Alternating exposures requested	N	N
[s] Primary exposure time	0.000000	3.2

2.3 Aspect



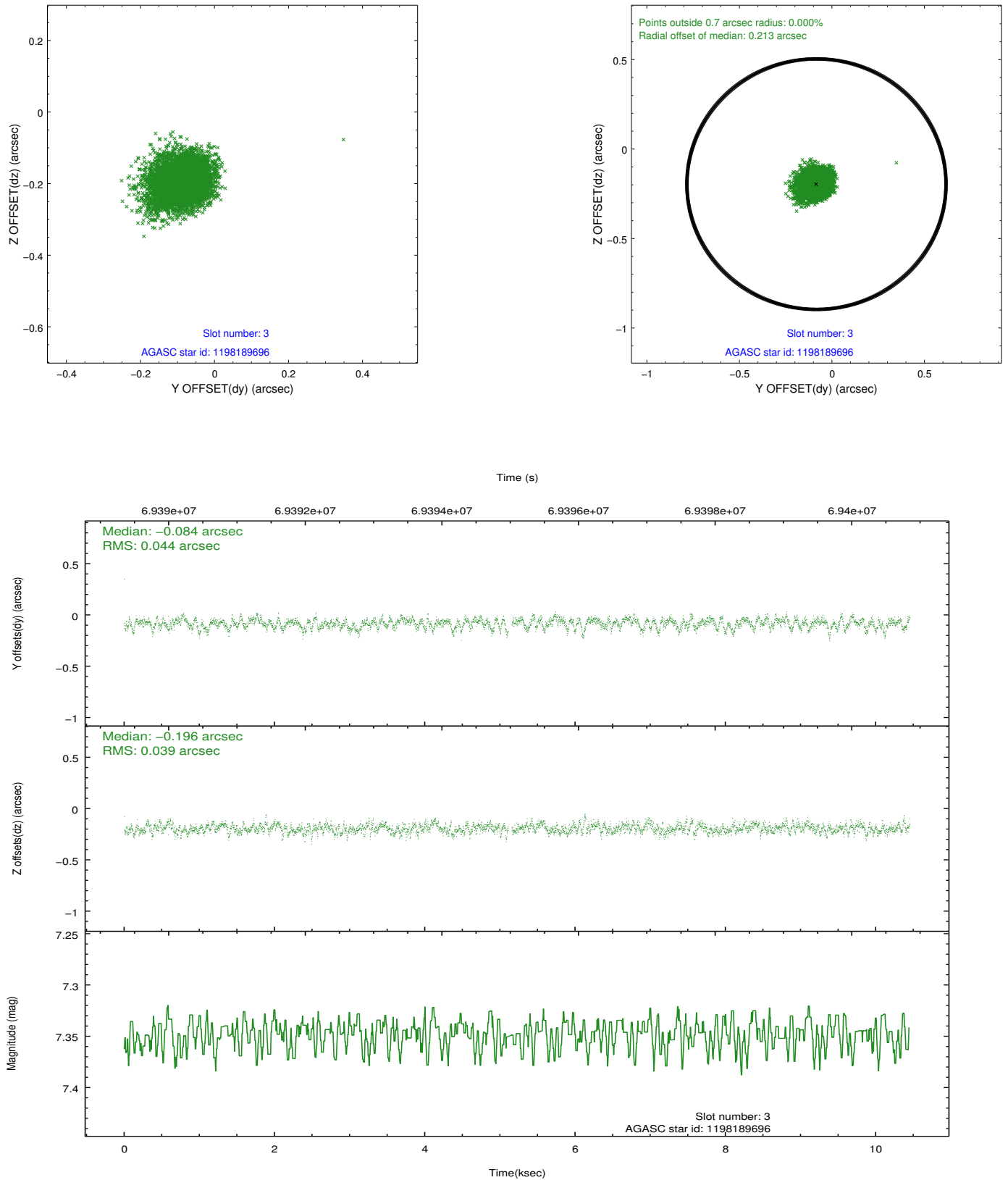


Slot Statistics

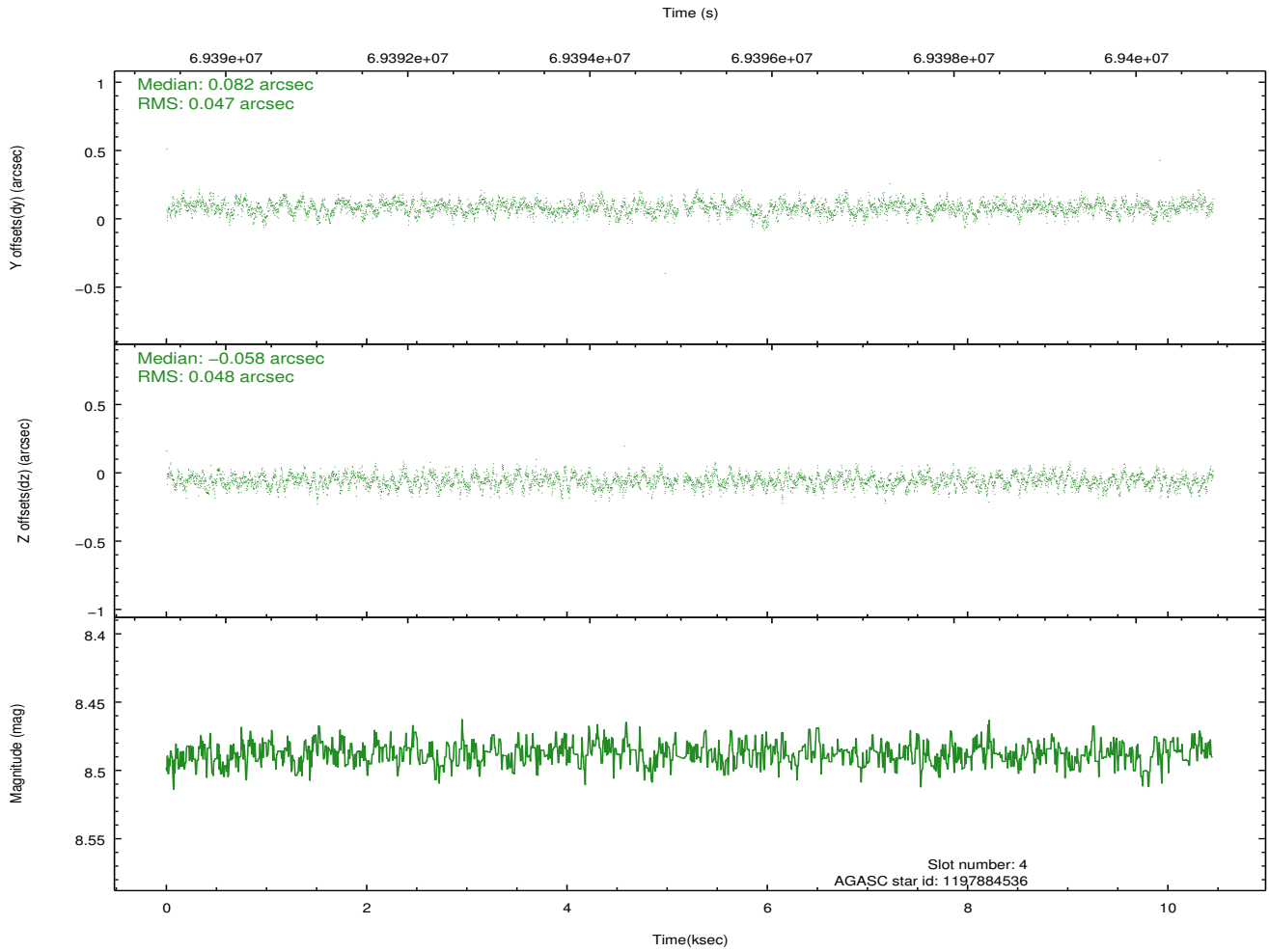
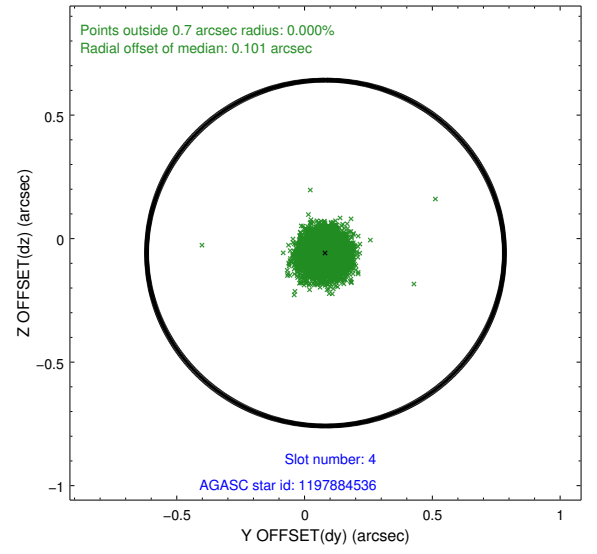
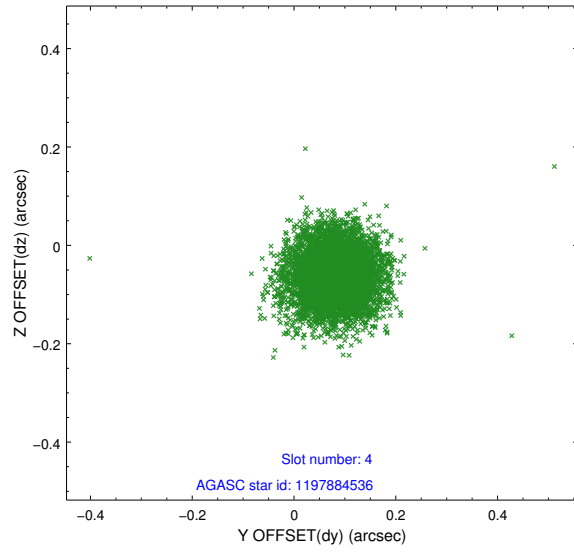
slot	status	id	mag	n_pts	med_dy	med_dz	dr1	dr2	ra	dec	mean_y	mean_z
0	FID	ACIS-I-2	7.15	2539	-0.054	-0.008	0.007	0.014	0.000000	0.000000	-754.66	-834.50
1	FID	ACIS-I-4	7.19	2537	-0.049	0.038	0.009	0.015	0.000000	0.000000	2159.17	1071.47
2	FID	ACIS-I-6	7.26	2537	0.004	0.033	0.010	0.016	0.000000	0.000000	406.12	1714.22
3	GUIDE	1198189696	7.35	5069	-0.084	-0.196	0.062	0.102	15.223750	-72.697522	1359.68	2089.97
4	GUIDE	1197884536	8.49	5073	0.082	-0.058	0.071	0.113	17.160729	-71.835289	-1810.99	68.68
5	GUIDE	1197878768	9.62	5071	0.011	0.157	0.082	0.135	16.656786	-71.304581	-2057.10	-1911.22
6	GUIDE	1197749416	10.28	5071	0.030	0.101	0.137	0.222	13.610513	-71.871242	1919.06	-1324.36
7	GUIDE	1197749664	9.56	5073	-0.038	-0.002	0.090	0.143	15.809015	-72.366369	320.27	1229.63

2.4 Star Slots

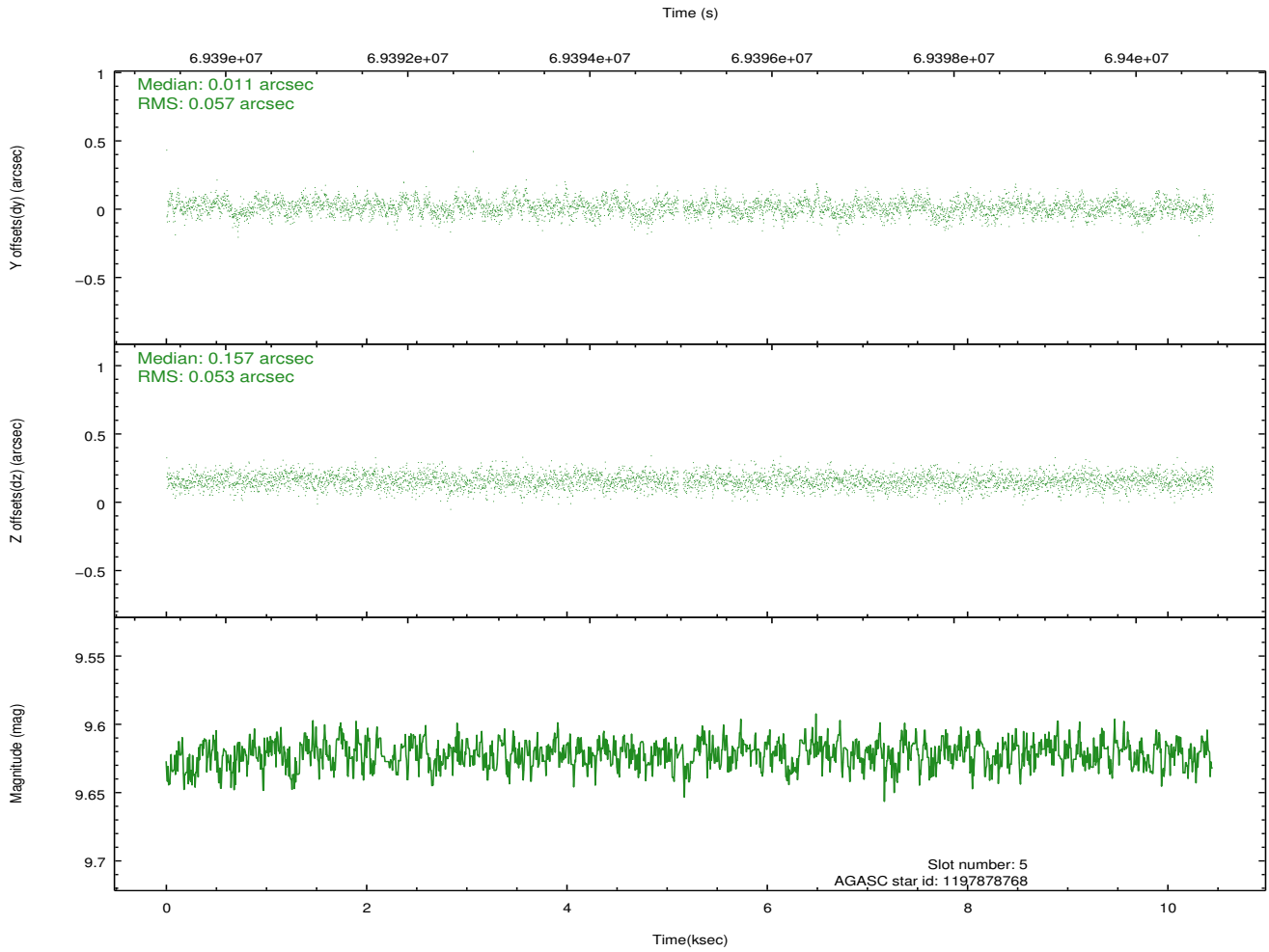
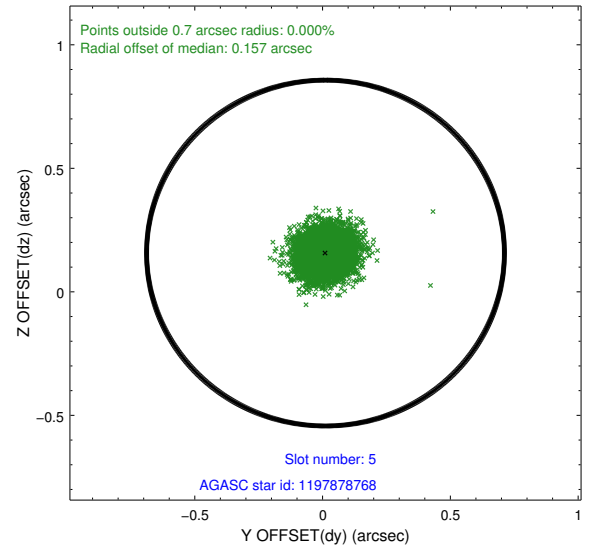
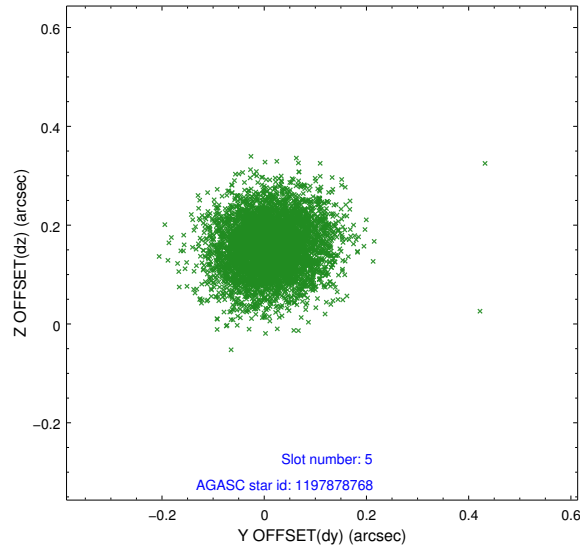
2.4.1 Slot 3



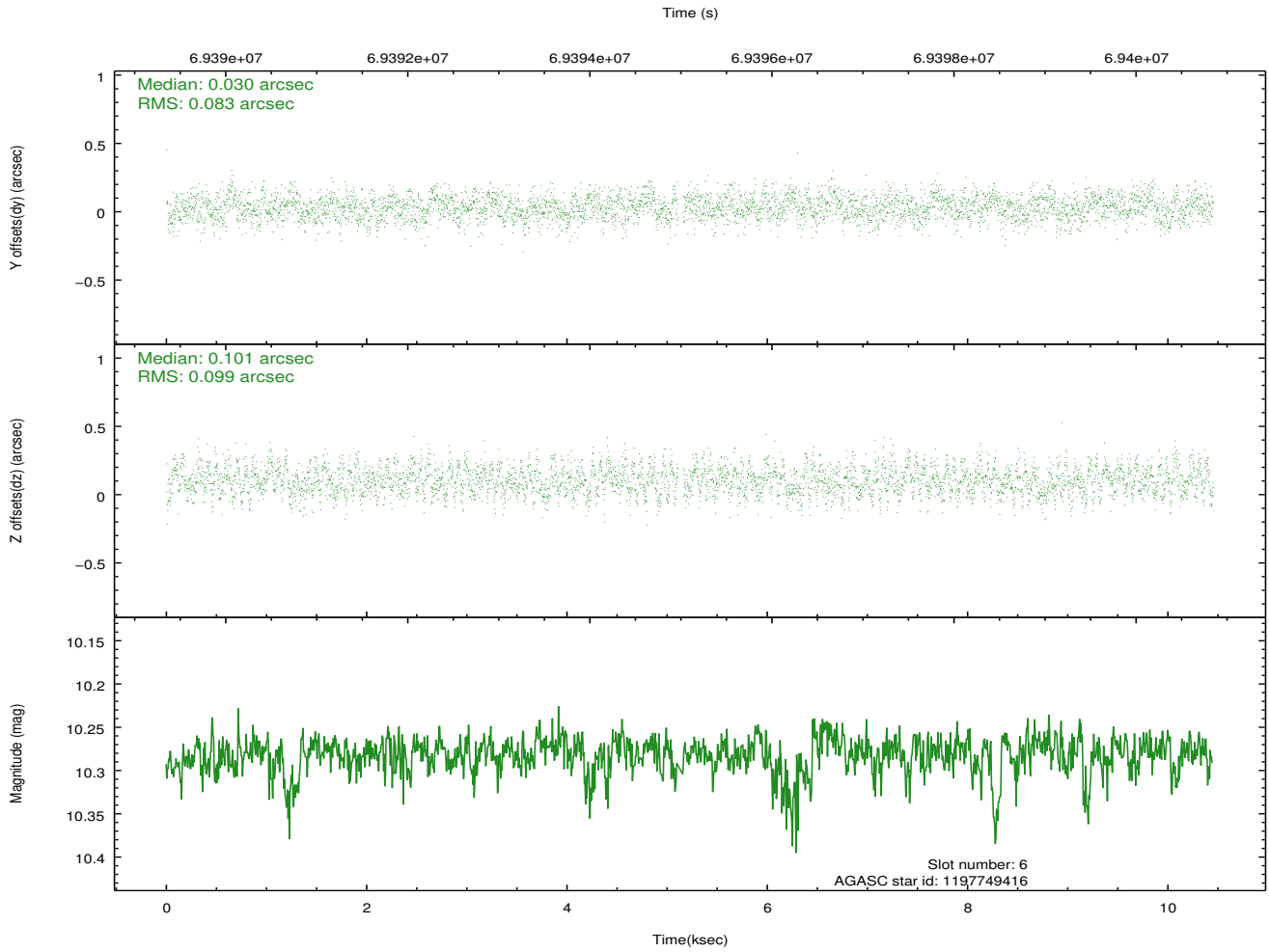
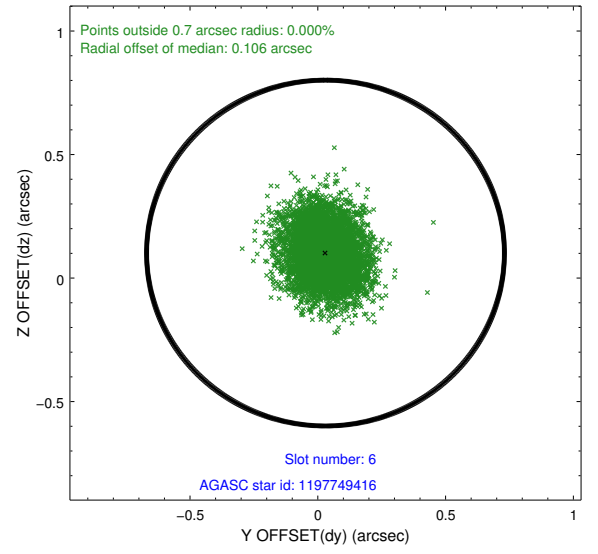
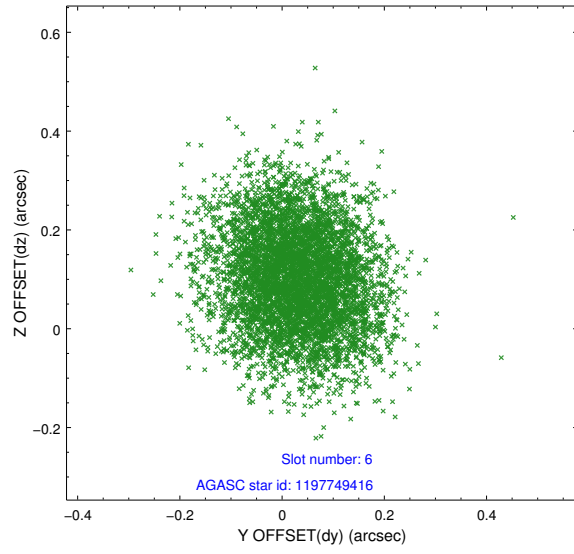
2.4.2 Slot 4



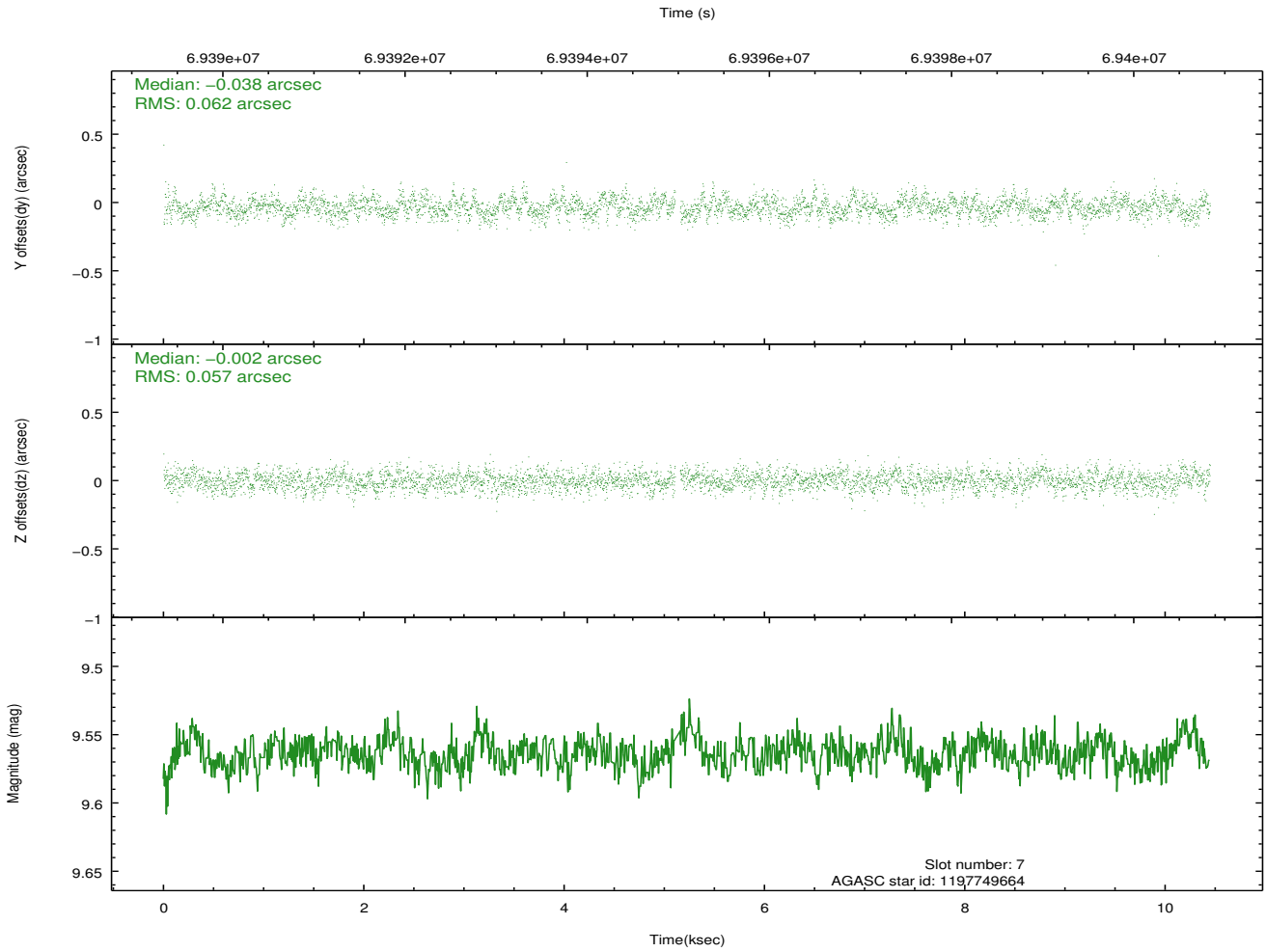
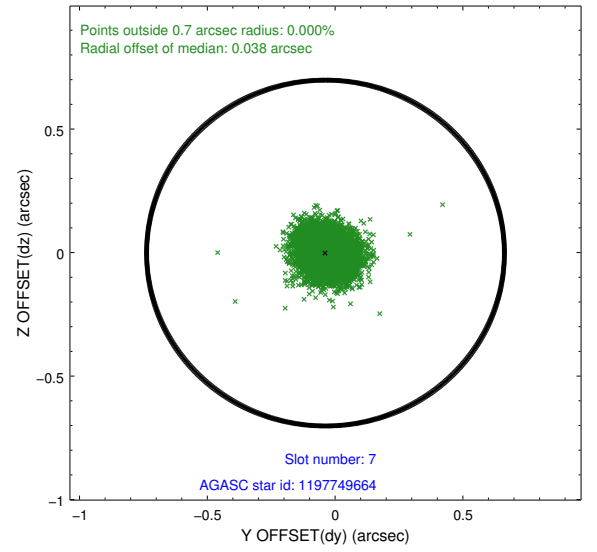
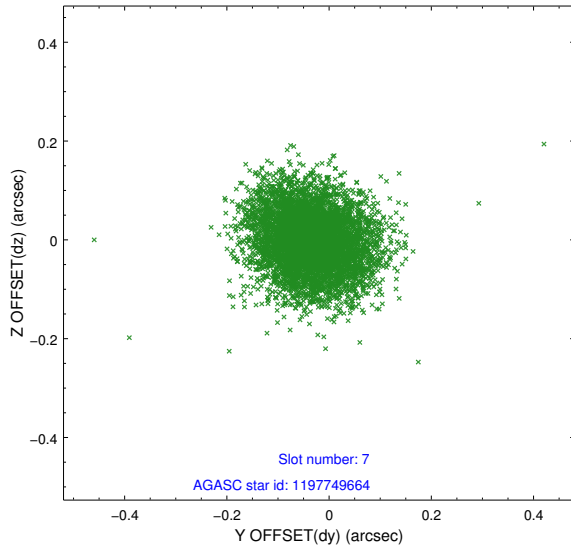
2.4.3 Slot 5



2.4.4 Slot 6

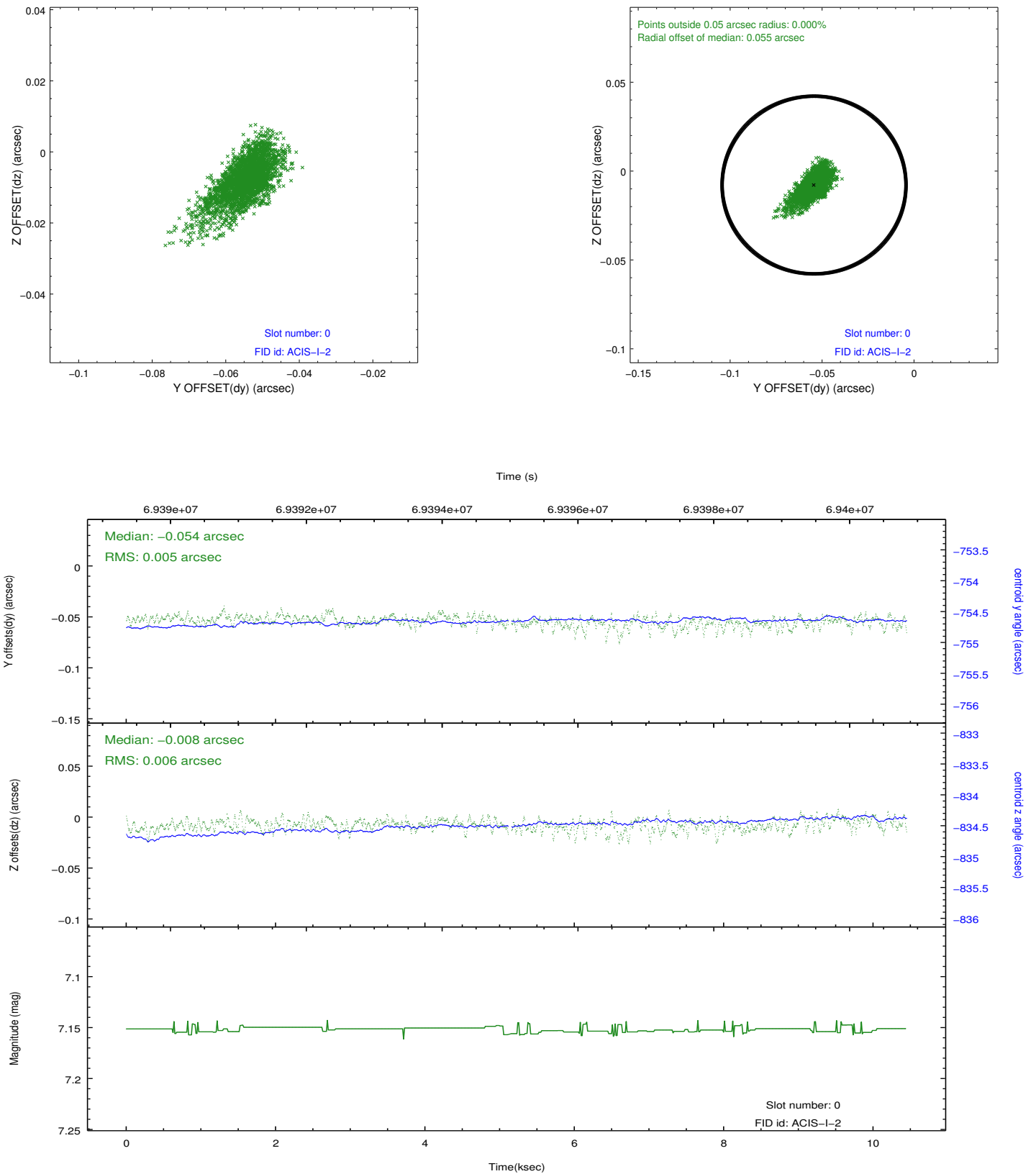


2.4.5 Slot 7

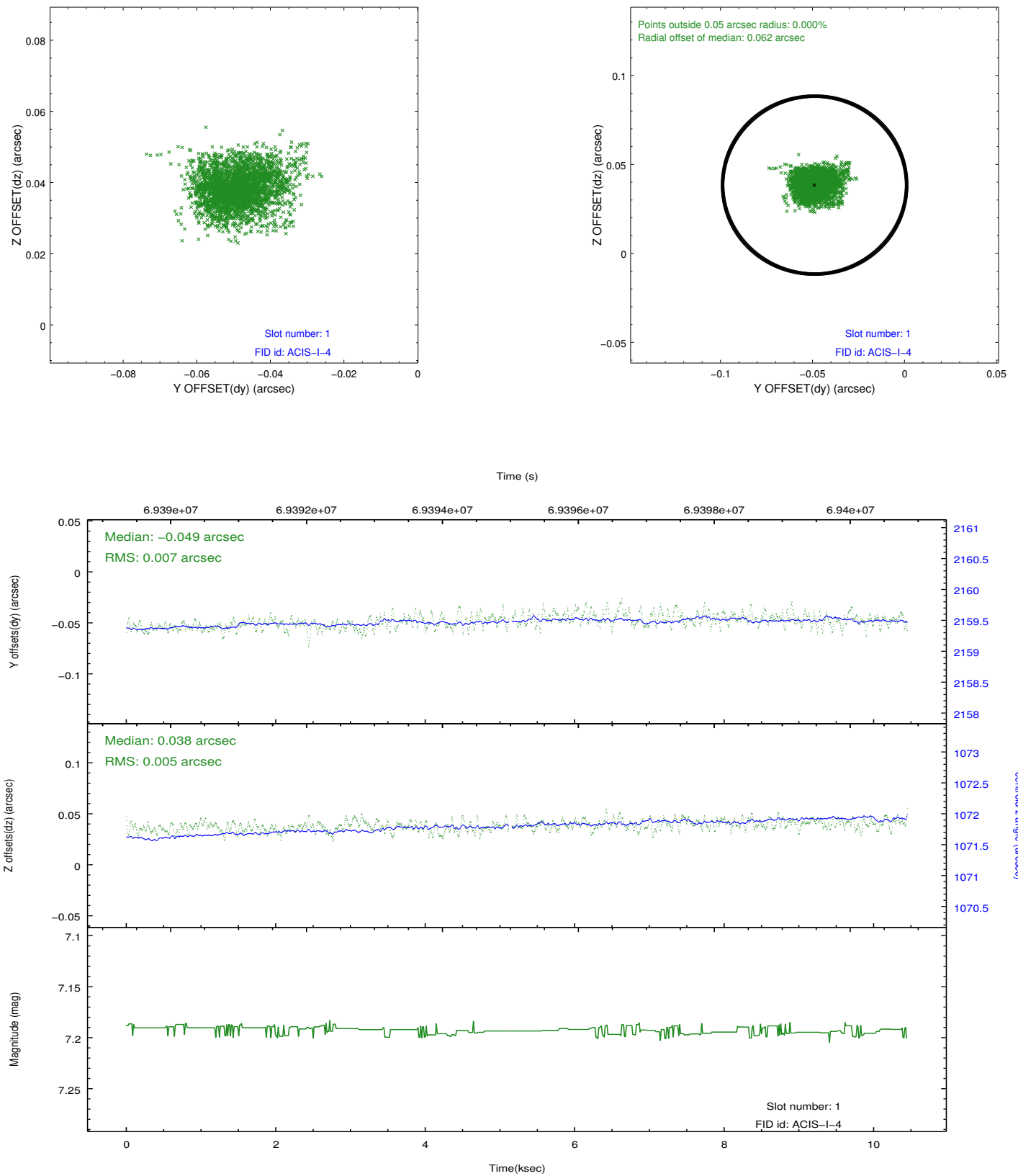


2.5 FID Slots

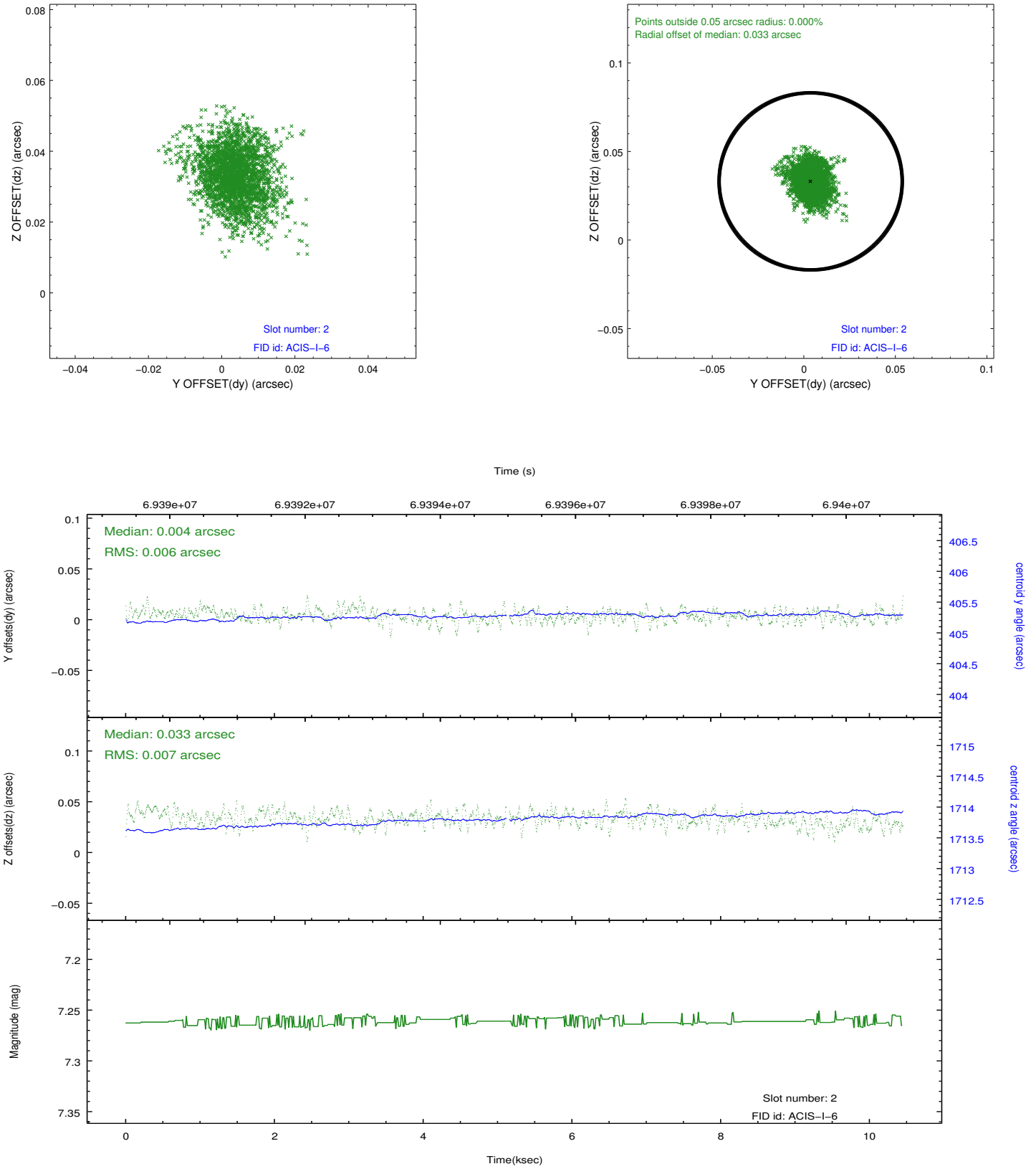
2.5.1 Slot 0



2.5.2 Slot 1



2.5.3 Slot 2



A Summary

A.1 Status

V&V Scientist	Jen Lauer
V&V Date (YYYY-MM-DD)	2012.08.24
V&V Edition	1
V&V Disposition and Status	OK
V&V Charge Time	10.361

A.2 Comments

Charge time for this ObsId remains at previous value of 10.361 ks although with the current processing the charge time would have been 10.396 ksec.