

# V&V Reference Report

## L2 ASCDS Version : 7.6.10

Observation 1841 - L2 Version 001  
Chandra X-Ray Center

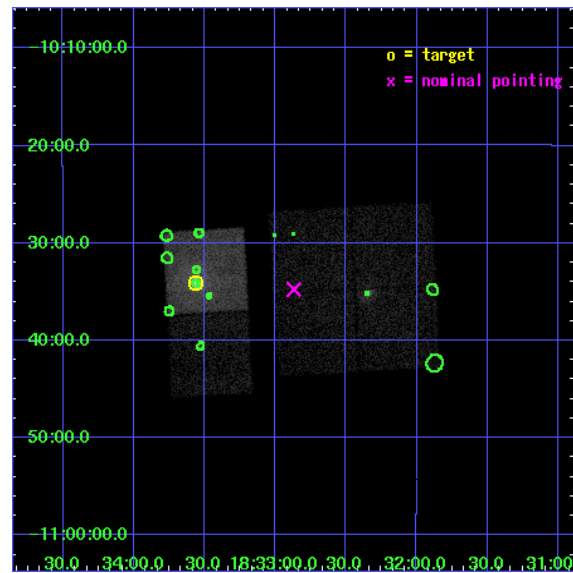
L2 Processing Date : Jun 6 2007

## Contents

<b>1</b>	<b>Front</b>	<b>2</b>
<b>2</b>	<b>OBI</b>	<b>3</b>
2.1	OBI . . . . .	3
2.1.1	Images . . . . .	3
2.1.2	Bias . . . . .	3
2.1.3	Parameters . . . . .	4
2.1.4	Events . . . . .	4
2.2	Compared Parameters . . . . .	5
2.3	Aspect . . . . .	6
2.4	Star Slots . . . . .	9
2.4.1	Slot 3 . . . . .	9
2.4.2	Slot 4 . . . . .	10
2.4.3	Slot 5 . . . . .	11
2.4.4	Slot 6 . . . . .	12
2.4.5	Slot 7 . . . . .	13
2.5	FID Slots . . . . .	14
2.5.1	Slot 0 . . . . .	14
2.5.2	Slot 1 . . . . .	15
2.5.3	Slot 2 . . . . .	16
<b>3</b>	<b>Point Sources</b>	<b>17</b>
<b>A</b>	<b>Summary</b>	<b>18</b>
A.1	Status . . . . .	18
A.2	Comments . . . . .	18

# 1 Front

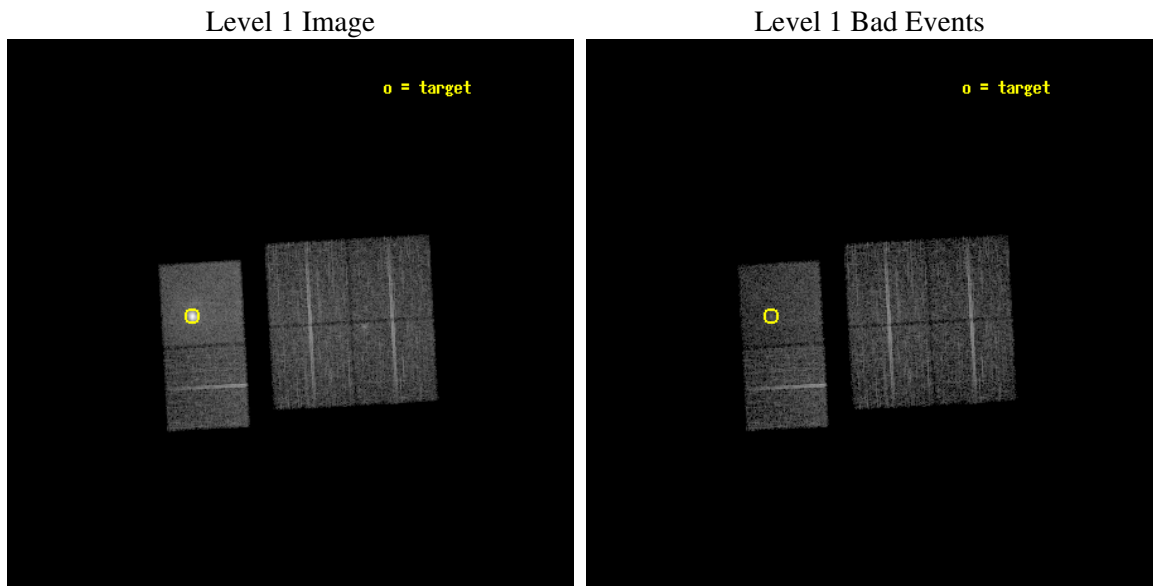
seq_num	590221
obs_id	1841
title	HRC RESPONSE TO CONTINUUM SOURCE.
observer	Dr. CXC Calibration
object	G21.5-0.9 [Chip I3, T=120, Offsets=-1,10,5]
dtcycle	0
cycle	P
ra_targ	278.389583
dec_targ	-10.568528
ra_nom	278.21721227421
dec_nom	-10.579678294291
roll_nom	266.80013883139
revision	2
ontime	8099.200007543
livetime	7996.6430602947
ontime0	8099.200007543
ontime1	8099.200007543
ontime2	8099.200007543
ontime3	8099.200007543
ontime6	8099.200007543
ontime7	8099.200007543
l2events	77665



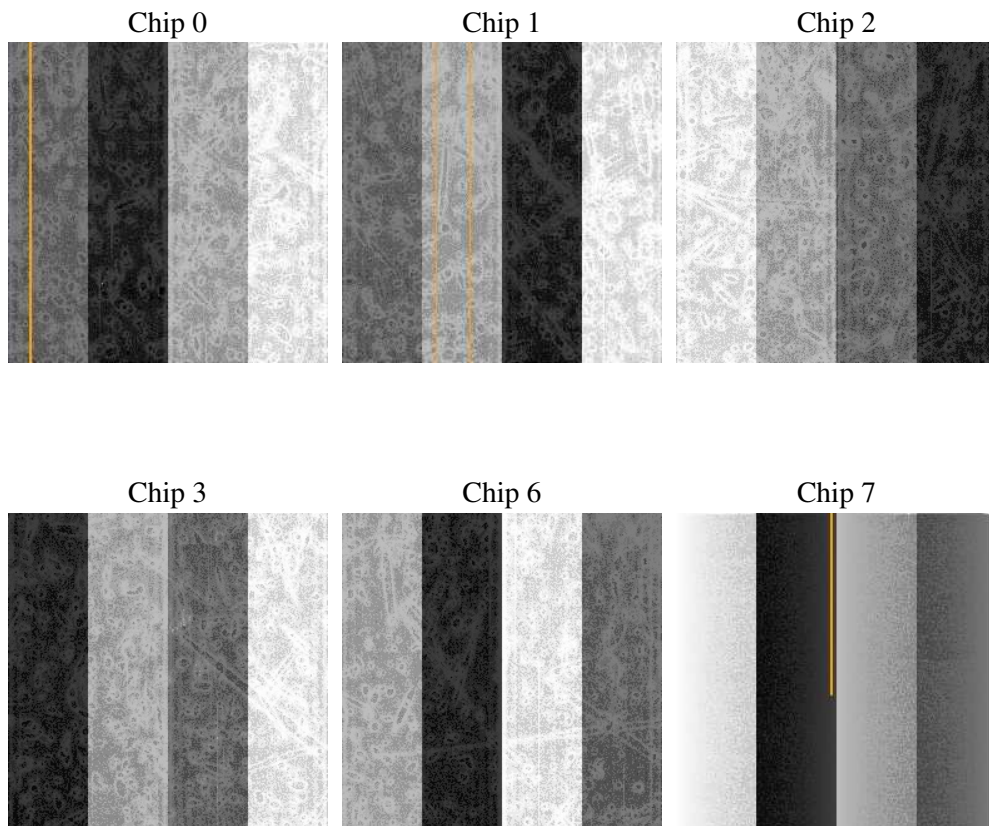
## 2 OBI

### 2.1 OBI

#### 2.1.1 Images



#### 2.1.2 Bias



### 2.1.3 Parameters

obi_num	0
ascdsver	7.6.10
caldbver	3.4.0
date	2007-06-06T13:17:10
revision	2

sched_exp_time	8000.000000
ontime	8099.200007543
ontime0	8099.200007543
ontime1	8099.200007543
ontime2	8099.200007543
ontime3	8099.200007543
ontime6	8099.200007543
ontime7	8099.200007543
llevents	325556

### 2.1.4 Events

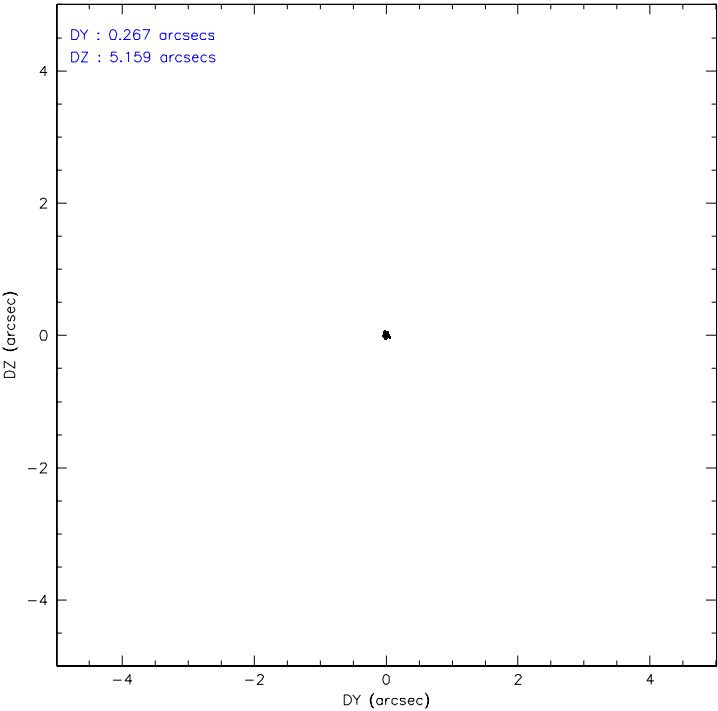
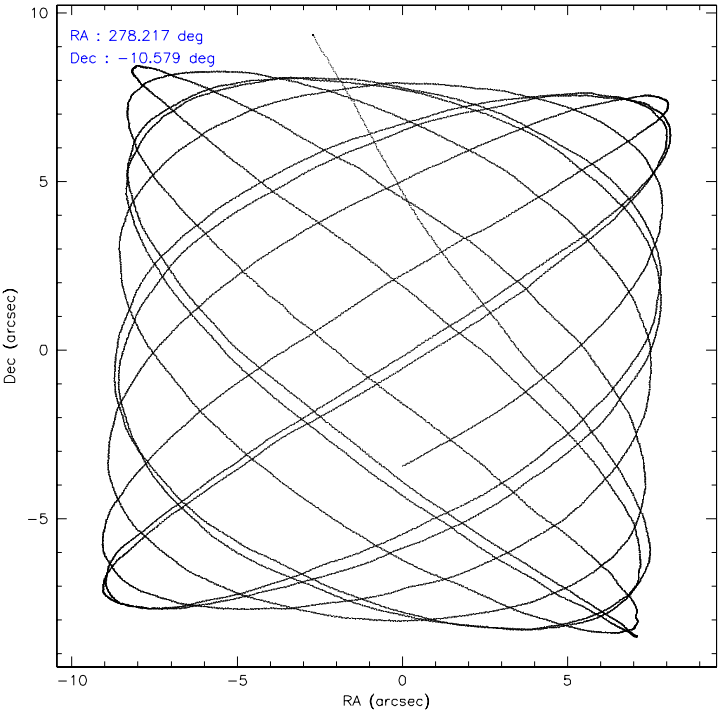
	ccd 0	ccd 1	ccd 2	ccd 3	ccd 6	ccd 7
level 1 events	46377	43577	49013	49685	50280	86624
rejected events	39395	37302	43331	43837	44278	34934
rejected %	84%	85%	88%	88%	88%	40%

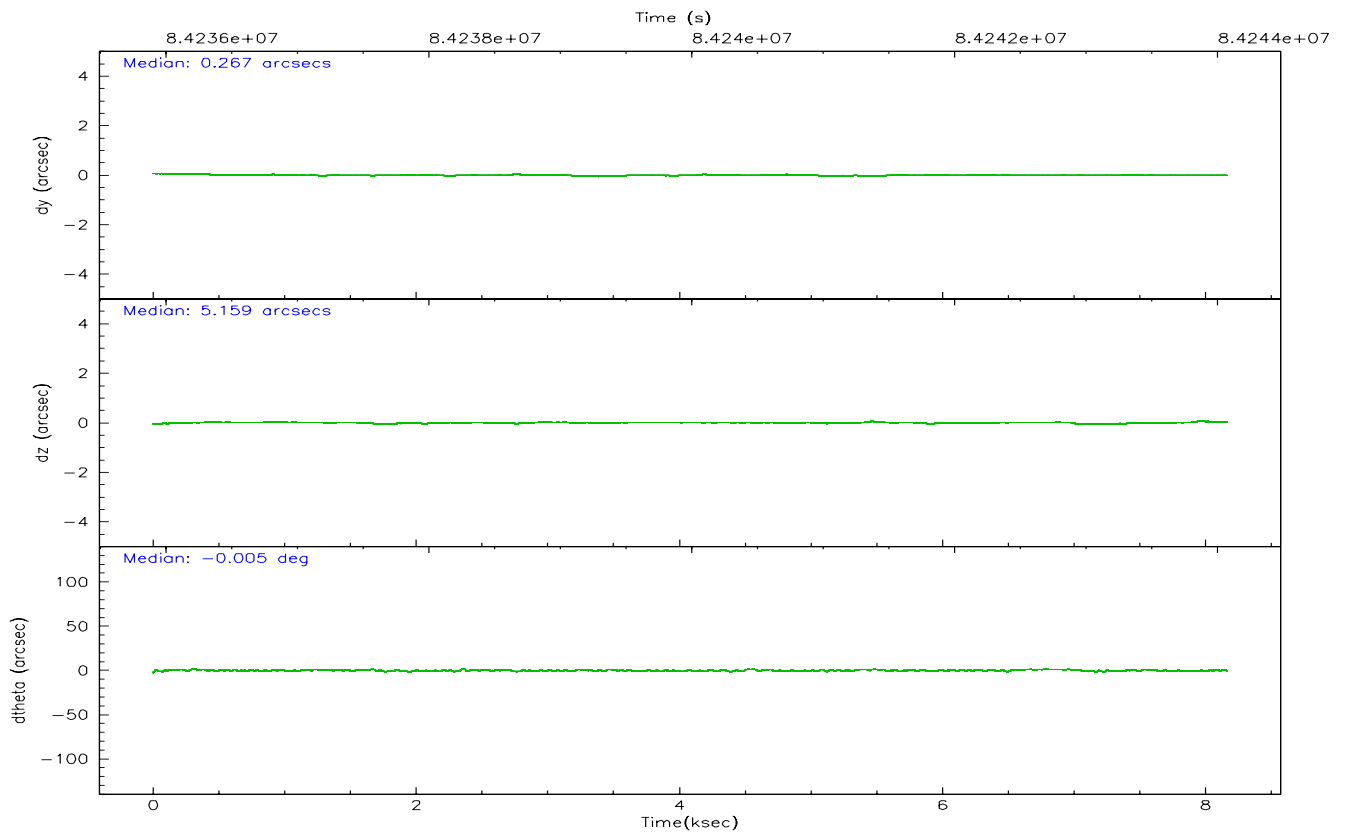
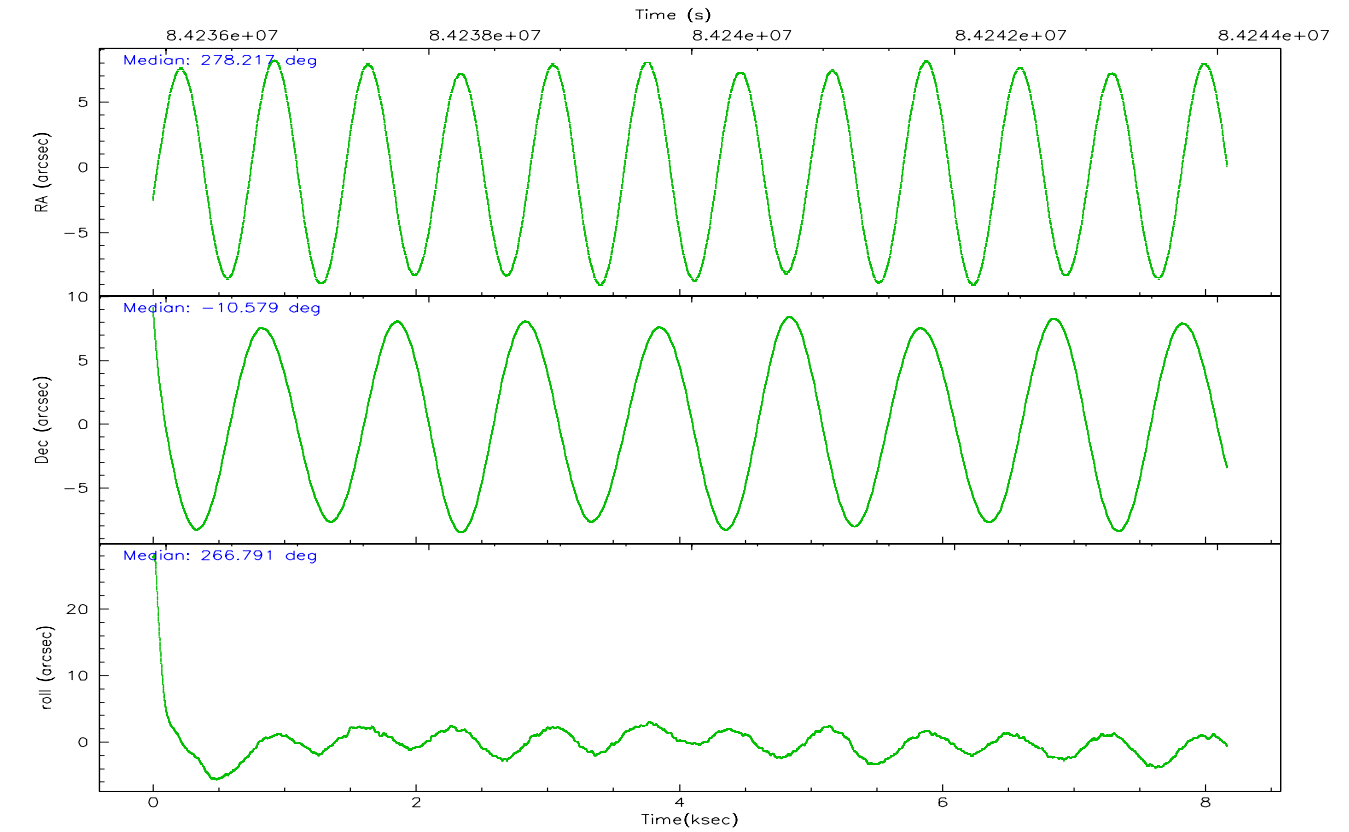
	ccd 0	ccd 1	ccd 2	ccd 3	ccd 6	ccd 7
grade 0 events	3352	2750	2501	2757	2596	8409
	7%	6%	5%	5%	5%	9%
grade 1 events	16	28	22	16	26	85
	0%	0%	0%	0%	0%	0%
grade 2 events	1383	1209	1211	1132	1165	11732
	2%	2%	2%	2%	2%	13%
grade 3 events	636	640	499	522	572	5451
	1%	1%	1%	1%	1%	6%
grade 4 events	579	600	510	514	551	5362
	1%	1%	1%	1%	1%	6%
grade 5 events	1658	1672	1658	1799	1953	5990
	3%	3%	3%	3%	3%	6%
grade 6 events	1035	1079	961	924	1120	20773
	2%	2%	1%	1%	2%	23%
grade 7 events	37718	35599	41651	42021	42297	28822
	81%	81%	84%	84%	84%	33%

## 2.2 Compared Parameters

Parameter	Planned	Actual	Parameter	Planned	Actual
Instrument	ACIS	ACIS	Obspar format version number	6	6
Detector	ACIS-012367	ACIS-012367	Obspar file type	PREDICTED	ACTUAL
Grating	NONE	NONE	Obspar update status	NONE	UPDATED
Data mode	FAINT	FAINT	Number of optional ACIS chips dropped	0	0
Observation mode	POINTING	POINTING	On-chip summing requested	N	N
Pointing RA	278.204593	278.2172122742093	Subarray requested	NONE	NONE
Pointing Dec	-10.555071	-10.57967829429147	Alternating exposures requested	N	N
Pointing Roll	266.589099	266.8001388313938	Primary exposure time	0.000000	3.2
SIM focus pos (mm)	-0.782348	-0.7809083437167272			
SIM defocus (mm)	0	0.001439871863259334			
SIM translation stage pos (mm)	-216.595463	-216.5931773375846			
SIM translation stage offset (mm)	-16.997	-16.99927566534504			
Observation start time	84236068.184000	84235048.69215401			
Observation start date	2000-09-01T22:53:24	2000-09-01T22:37:28			
Observation end time	84244068.184000	84244214.754998			
Observation end date	2000-09-02T01:06:44	2000-09-02T01:10:14			
Read mode	TIMED	TIMED			

### 2.3 Aspect





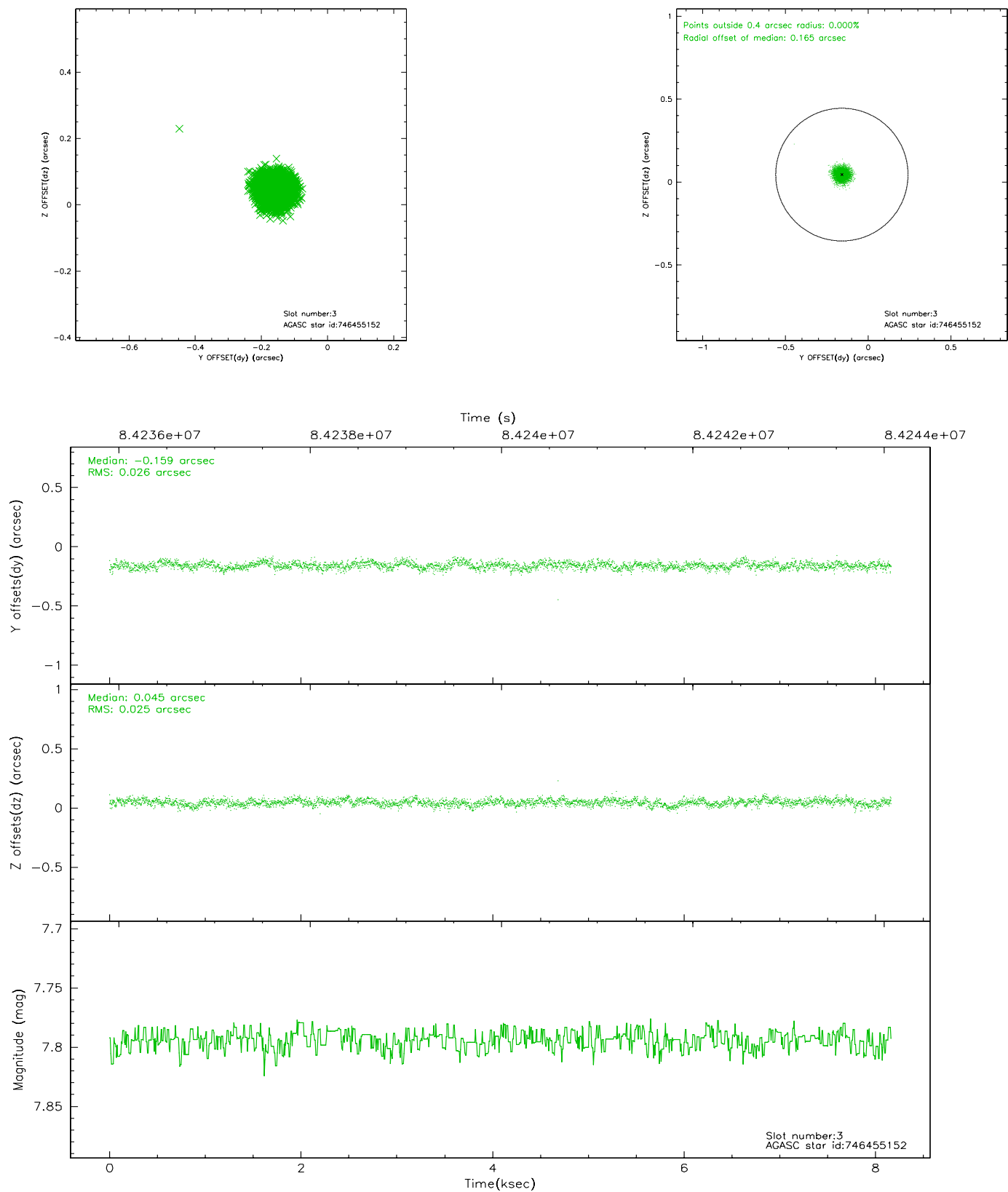
### Slot Statistics

slot	status	id	mag	n_pts	med_dy	med_dz	dr1	dr2	ra	dec	mean_y	mean_z
0	FID	ACIS-I-2	7.19	1992	0.040	-0.136	0.007	0.013	0.000000	0.000000	-755.69	-1182.07
1	FID	ACIS-I-4	7.18	1991	-0.111	0.029	0.005	0.010	0.000000	0.000000	2157.76	723.88
2	FID	ACIS-I-5	7.22	1992	-0.030	0.175	0.008	0.013	0.000000	0.000000	-1807.89	720.41
3	GUIDE	746455152	7.79	3984	-0.159	0.045	0.038	0.062	278.447893	-9.976732	-2128.93	737.45
4	GUIDE	746330256	8.09	3984	0.093	-0.049	0.058	0.091	277.634401	-10.863955	1232.40	-1945.30
5	GUIDE	746462456	8.39	3984	-0.045	0.197	0.064	0.099	278.652171	-10.530173	-181.81	1576.23
6	GUIDE	746455112	8.92	3979	0.195	-0.296	0.071	0.124	278.266531	-10.703234	520.21	251.15
7	GUIDE	746460272	8.94	3981	-0.078	0.100	0.089	0.149	278.847488	-10.152127	-1580.96	2188.41

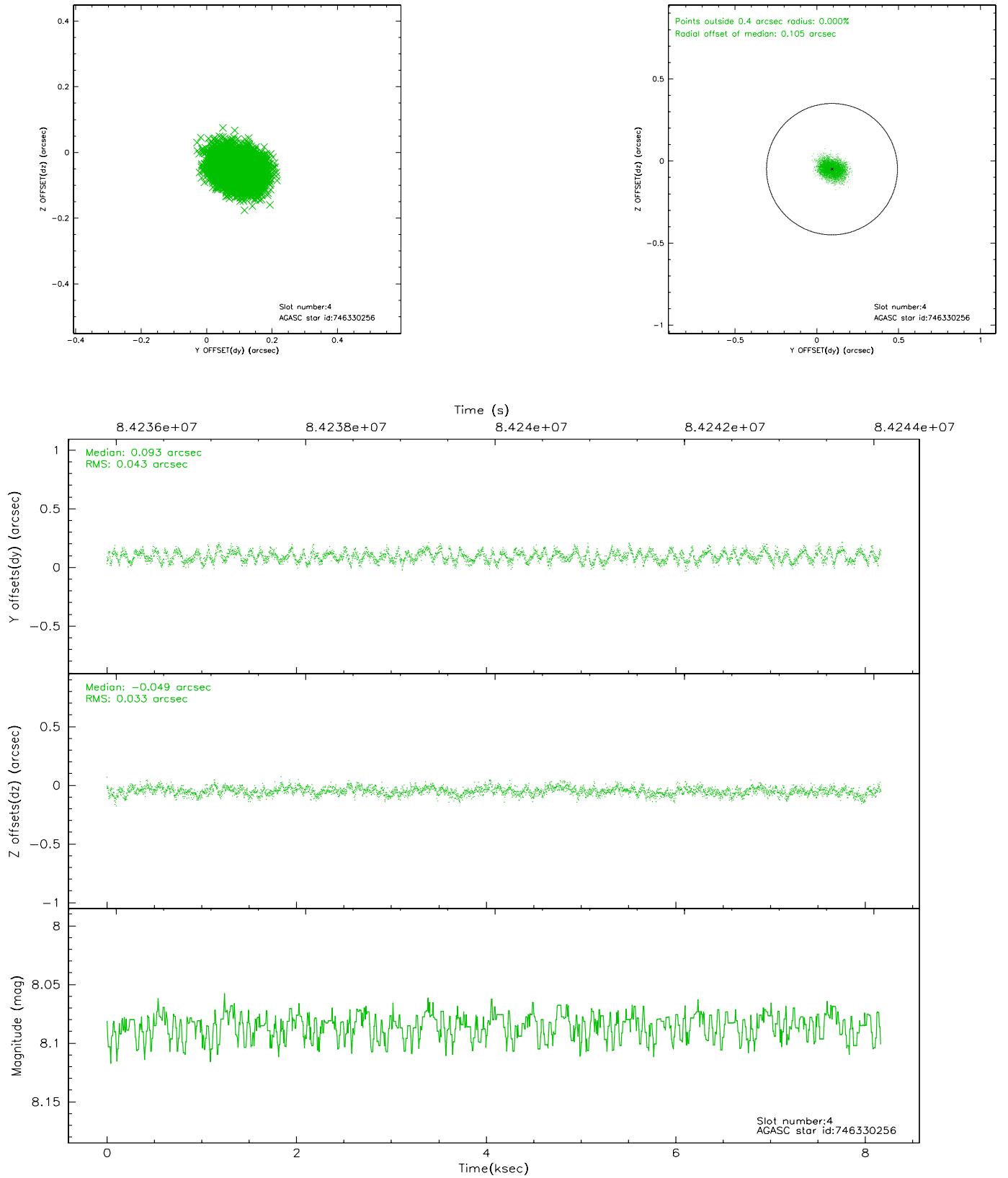


## 2.4 Star Slots

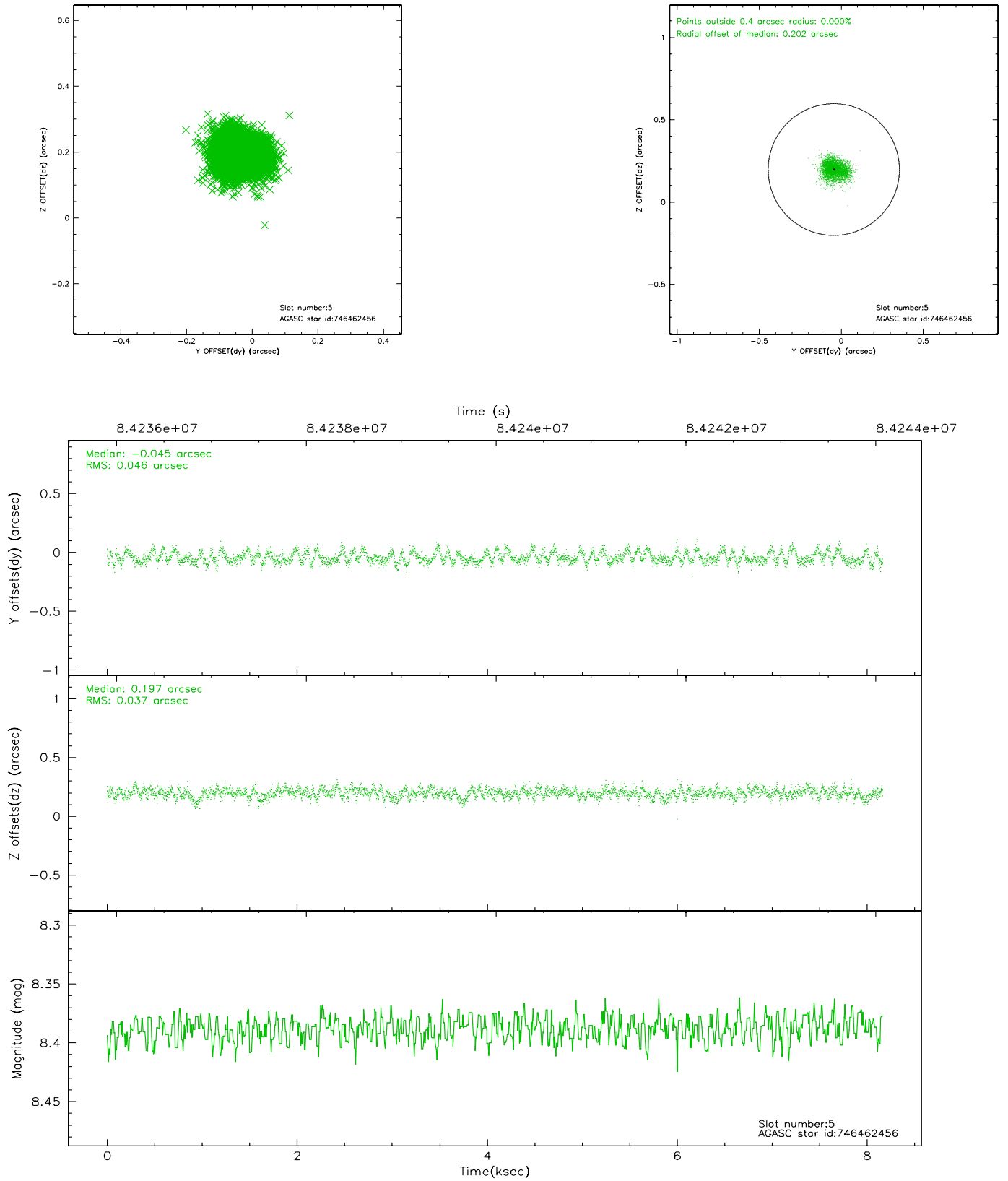
### 2.4.1 Slot 3



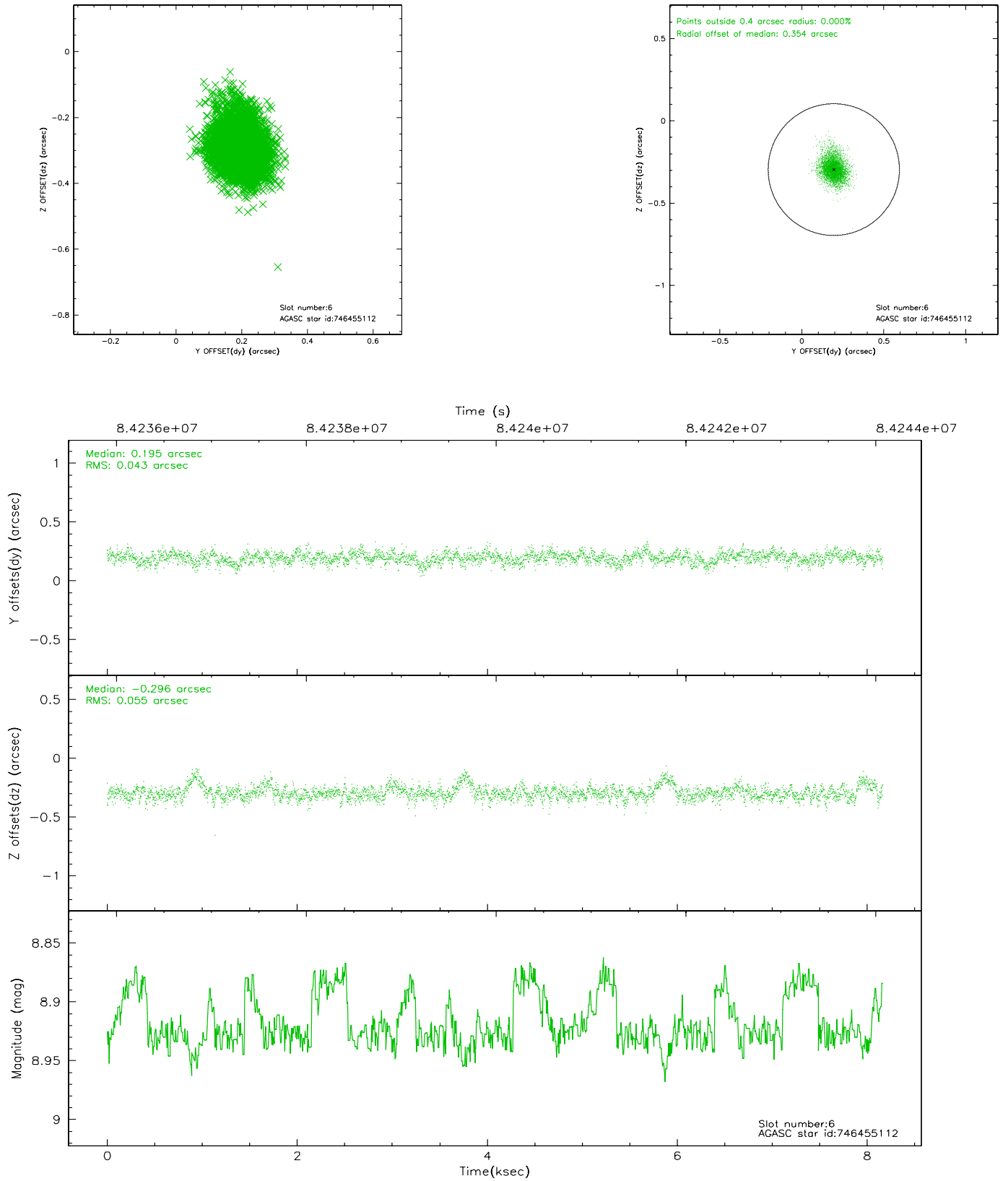
## 2.4.2 Slot 4



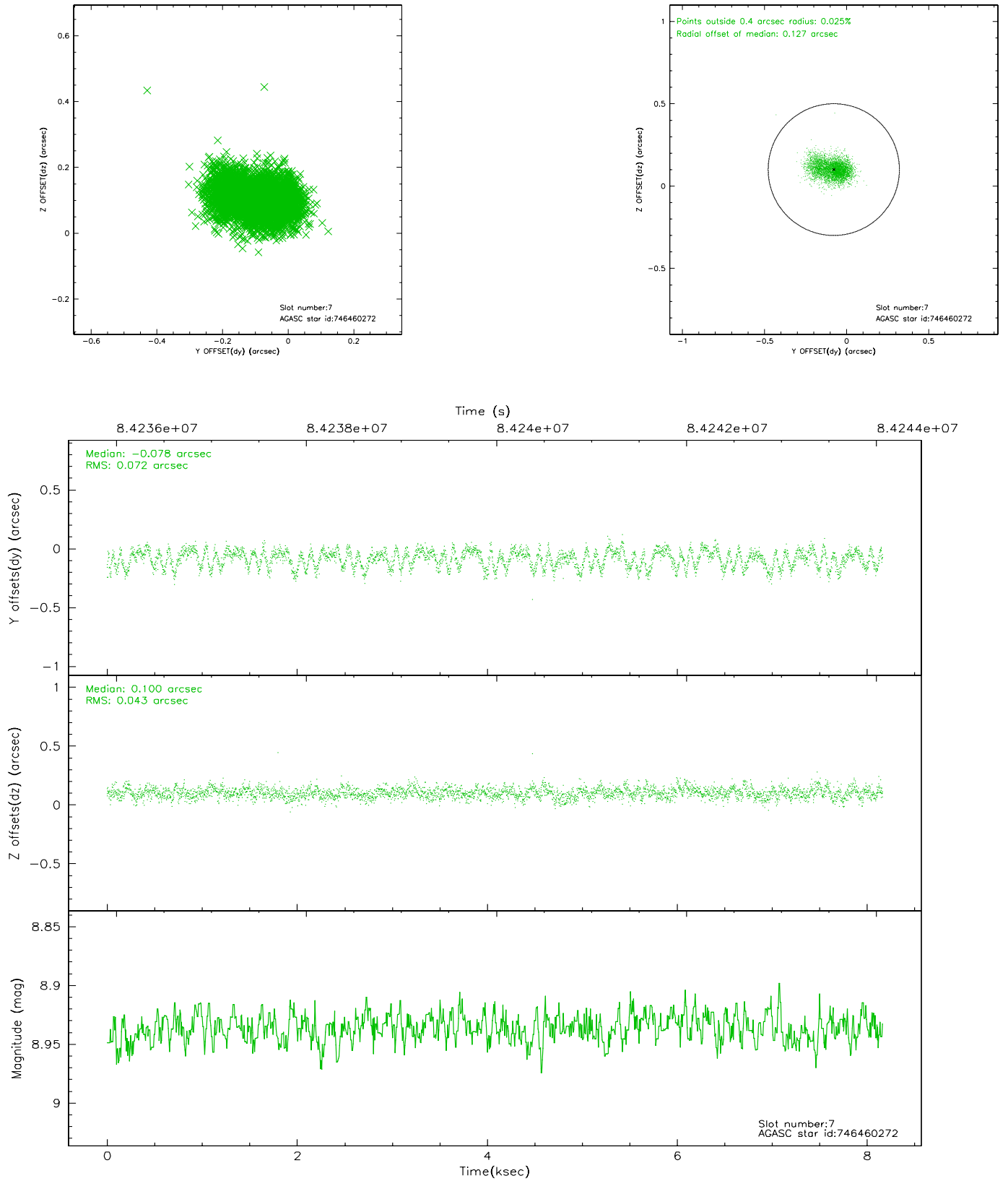
### 2.4.3 Slot 5



## 2.4.4 Slot 6

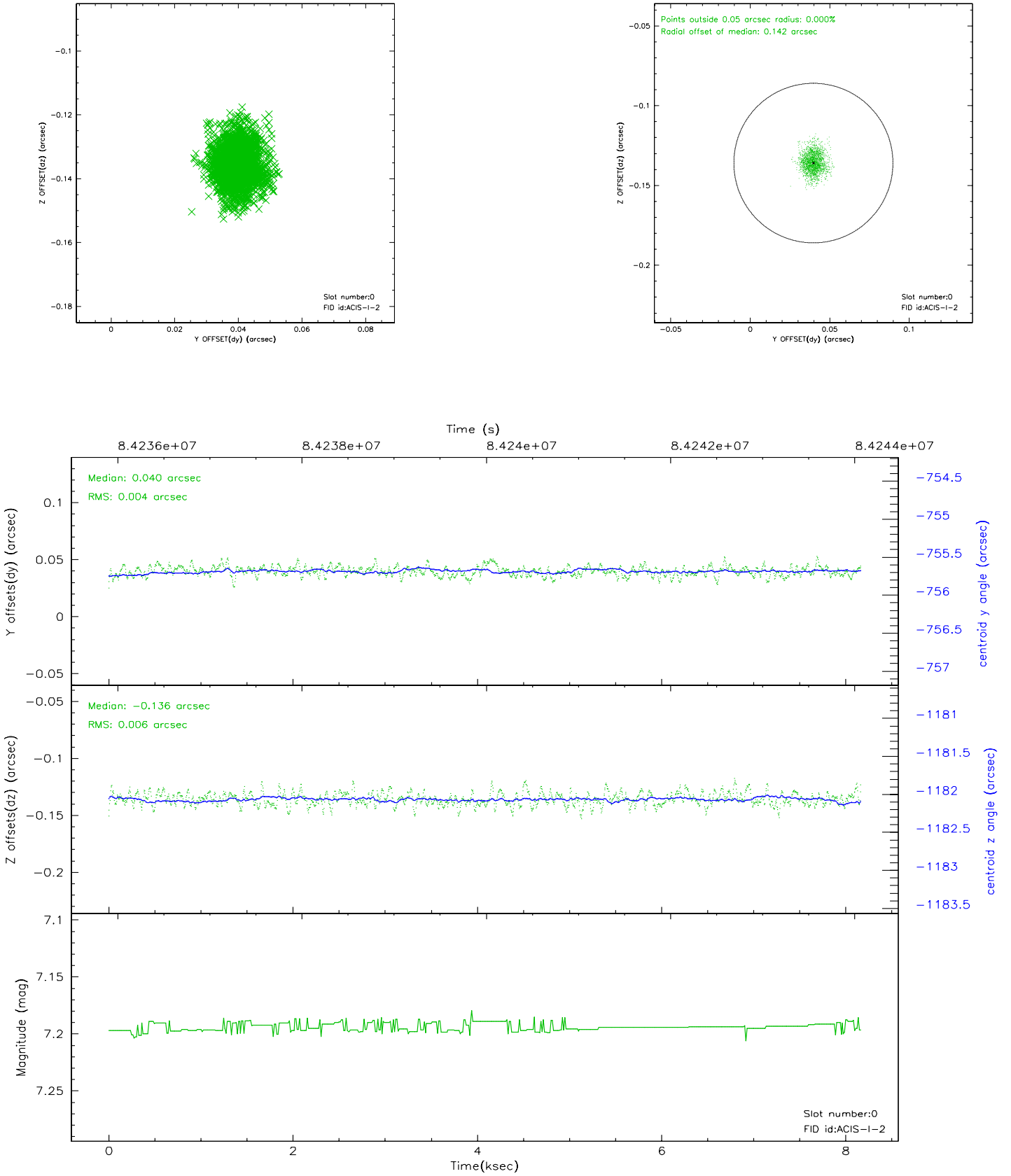


## 2.4.5 Slot 7

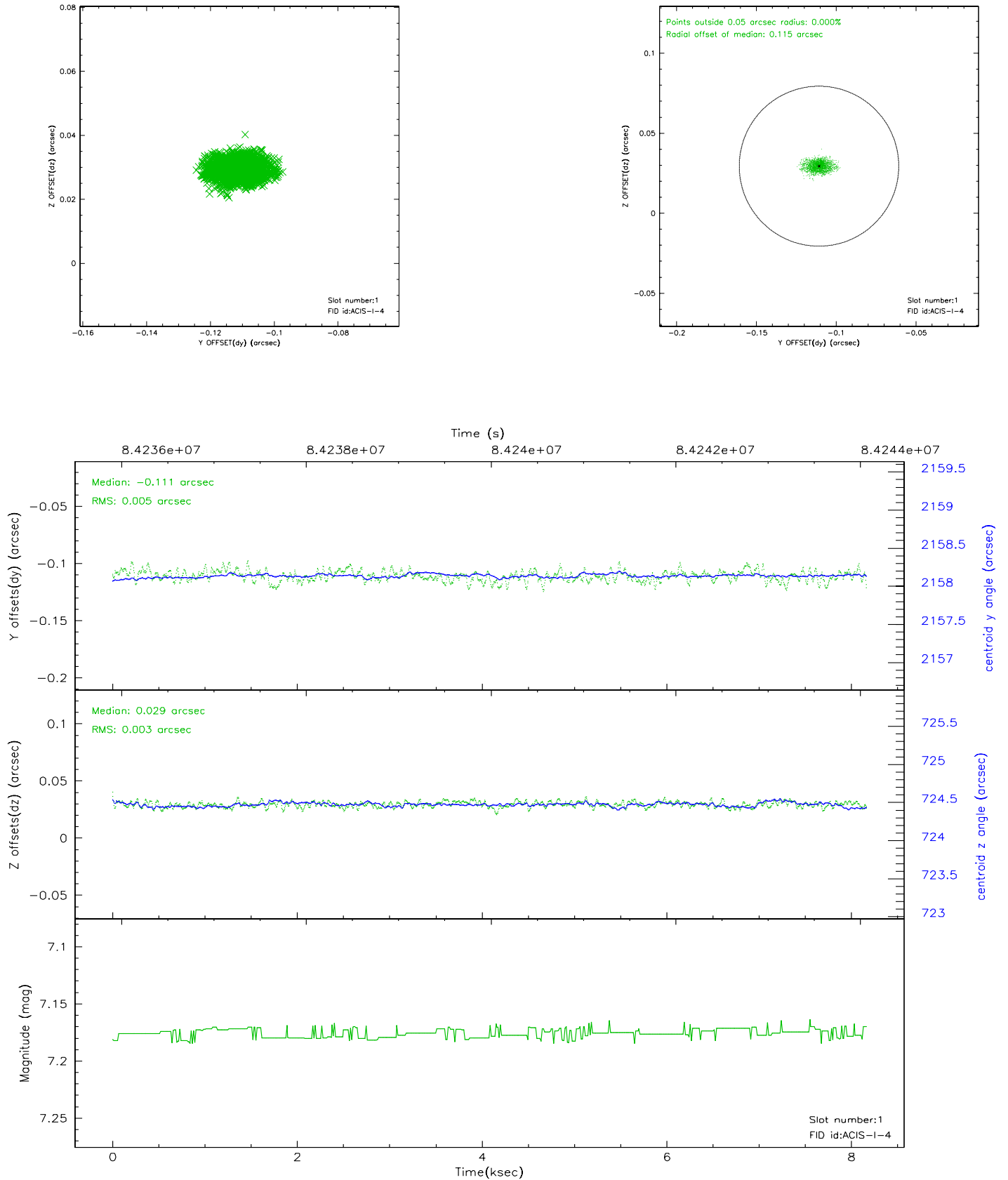


## 2.5 FID Slots

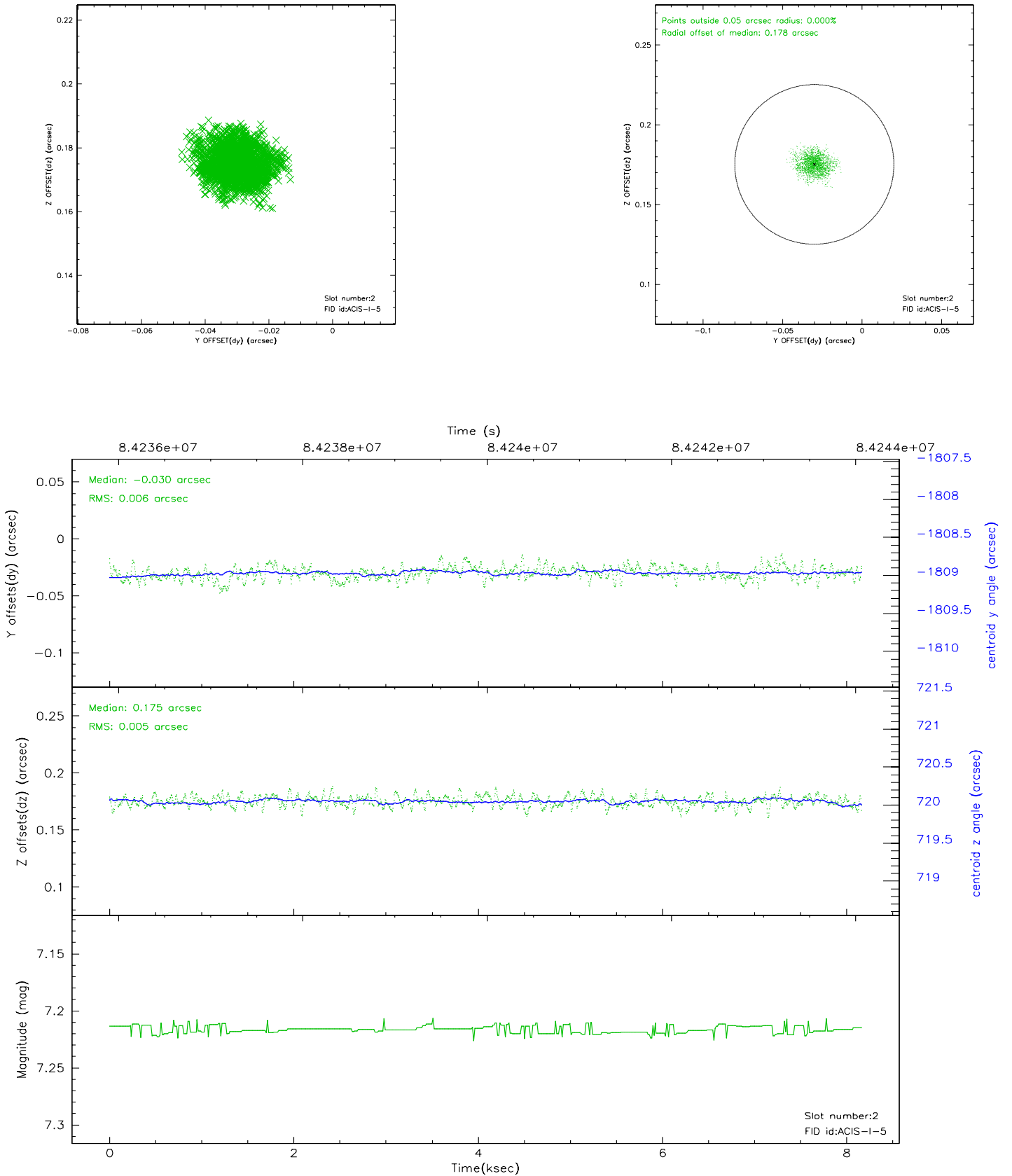
### 2.5.1 Slot 0



## 2.5.2 Slot 1

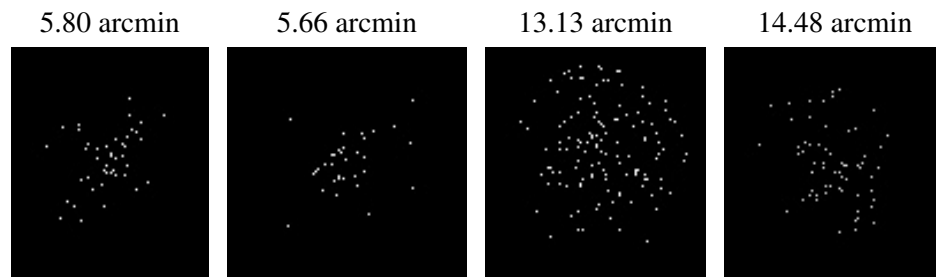


### 2.5.3 Slot 2





### 3 Point Sources



## A Summary

### A.1 Status

V&V Scientist	Jen Lauer
V&V Date (YYYY-MM-DD)	2007.06.06
V&V Edition	1
V&V Disposition and Status	OK
V&V Charge Time	8.102

### A.2 Comments