

V&V Reference Report

L2 ASCDS Version : 7.6.10

Observation 1839 - L2 Version 001
Chandra X-Ray Center

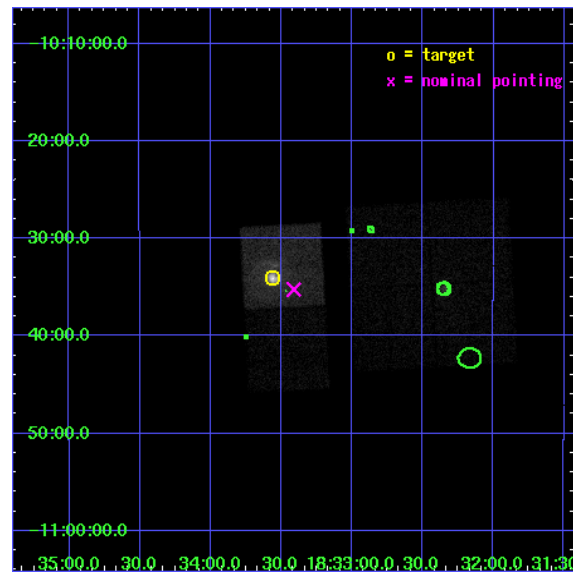
L2 Processing Date : Jun 6 2007

Contents

1	Front	2
2	OBI	3
2.1	OBI	3
2.1.1	Images	3
2.1.2	Bias	3
2.1.3	Parameters	4
2.1.4	Events	4
2.2	Compared Parameters	5
2.3	Aspect	6
2.4	Star Slots	9
2.4.1	Slot 3	9
2.4.2	Slot 4	10
2.4.3	Slot 5	11
2.4.4	Slot 6	12
2.4.5	Slot 7	13
2.5	FID Slots	14
2.5.1	Slot 0	14
2.5.2	Slot 1	15
2.5.3	Slot 2	16
3	Point Sources	17
A	Summary	18
A.1	Status	18
A.2	Comments	18

1 Front

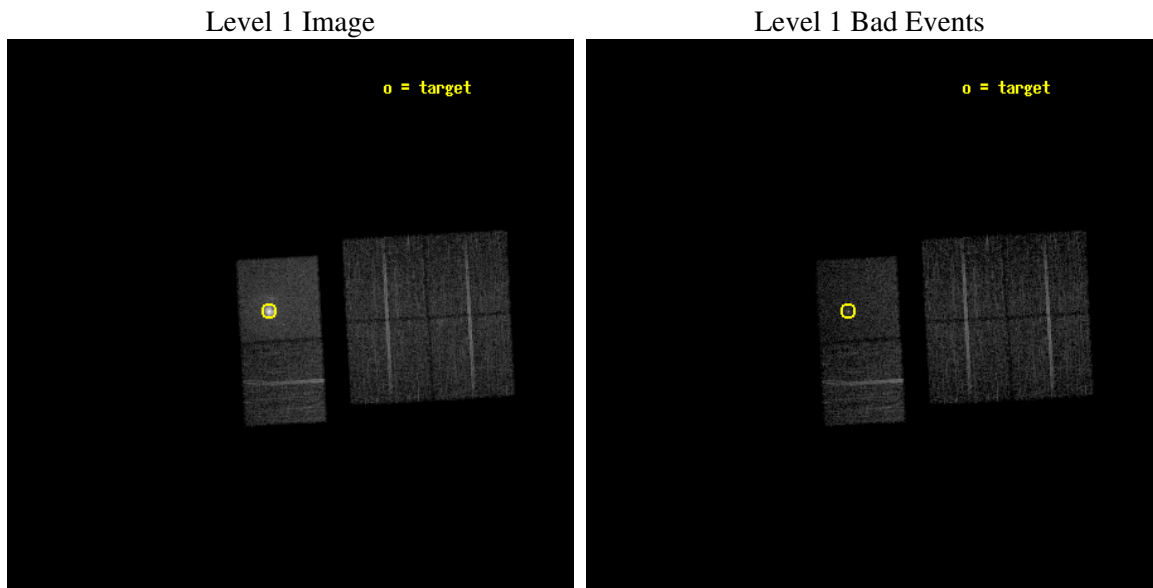
seq_num	590219
obs_id	1839
title	HRC RESPONSE TO CONTINUUM SOURCE.
observer	Dr. CXC Calibration
object	G21.5-0.9 [Chip S3, T=120, Offsets=-1,2,-1]
dtcycle	0
cycle	P
ra_targ	278.389583
dec_targ	-10.568528
ra_nom	278.35268036794
dec_nom	-10.587408841368
roll_nom	266.82878493964
revision	2
ontime	7753.6000072211
livetime	7655.4192552723
ontime0	7753.6000072211
ontime1	7750.3590469807
ontime2	7753.6000072211
ontime3	7753.6000072211
ontime6	7753.6000072211
ontime7	7753.6000072211
l2events	77477



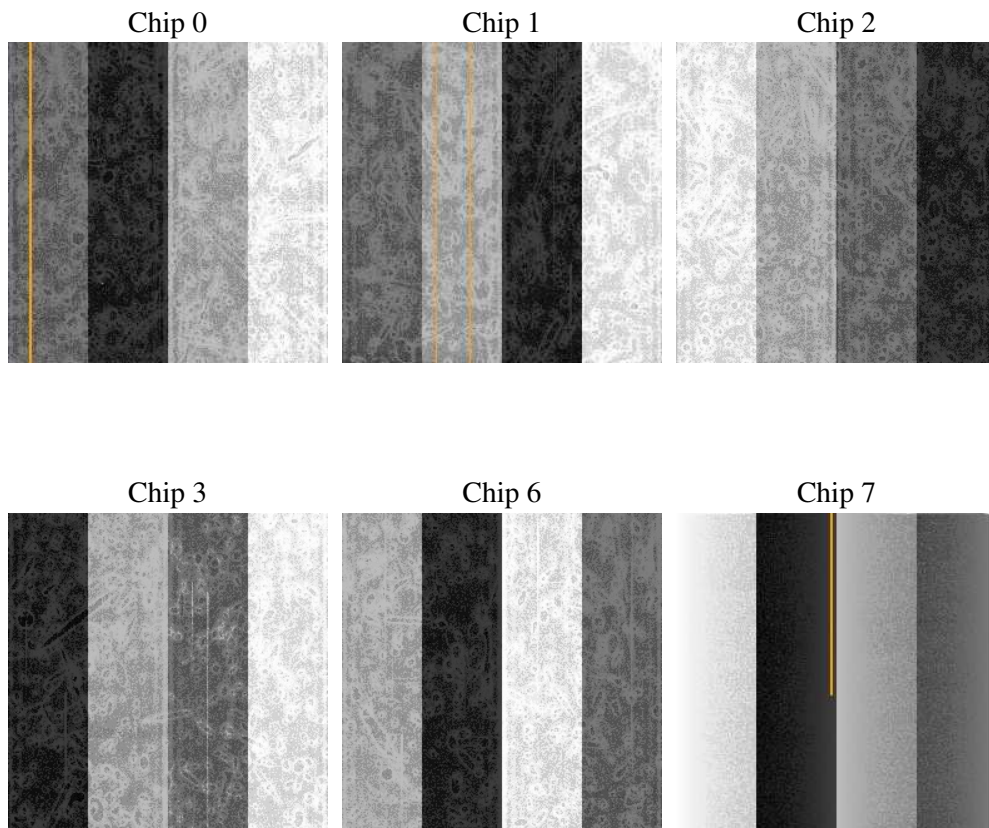
2 OBI

2.1 OBI

2.1.1 Images



2.1.2 Bias



2.1.3 Parameters

obi_num	0
ascdsver	7.6.10
caldsver	3.4.0
date	2007-06-06T13:42:09
revision	2

sched_exp_time	8000.000000
ontime	7753.6000072211
ontime0	7753.6000072211
ontime1	7750.3590469807
ontime2	7753.6000072211
ontime3	7753.6000072211
ontime6	7753.6000072211
ontime7	7753.6000072211
l1events	316943

2.1.4 Events

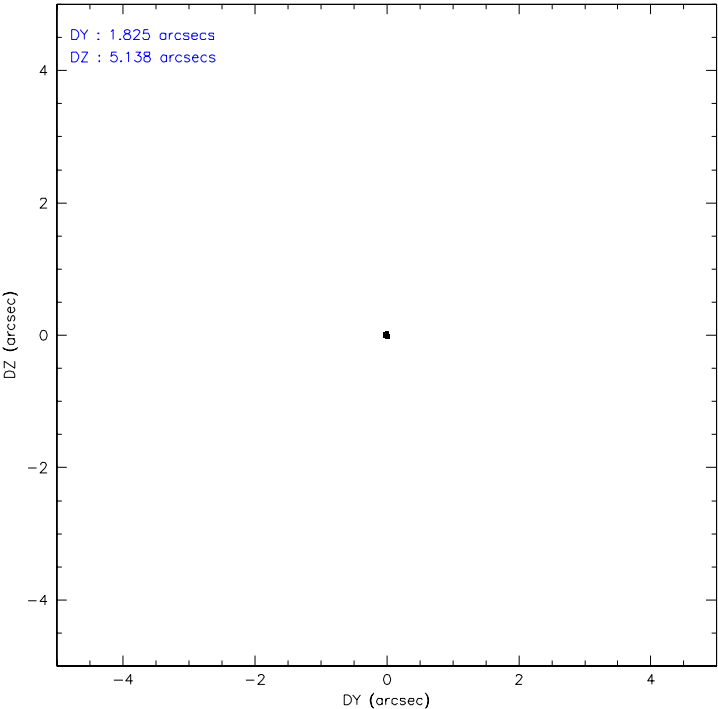
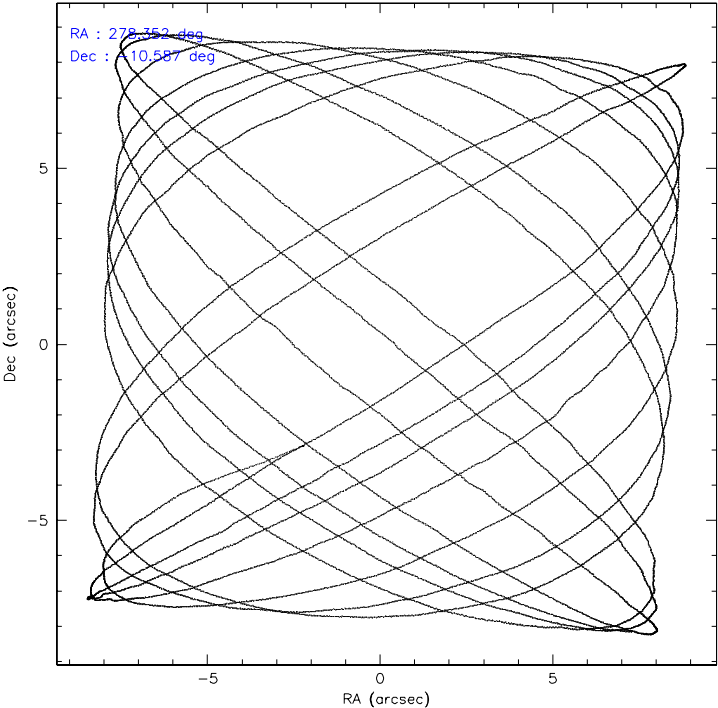
	ccd 0	ccd 1	ccd 2	ccd 3	ccd 6	ccd 7
level 1 events	46703	42894	45587	46303	48041	87415
rejected events	40420	36909	40364	40720	42434	33954
rejected %	86%	86%	88%	87%	88%	38%

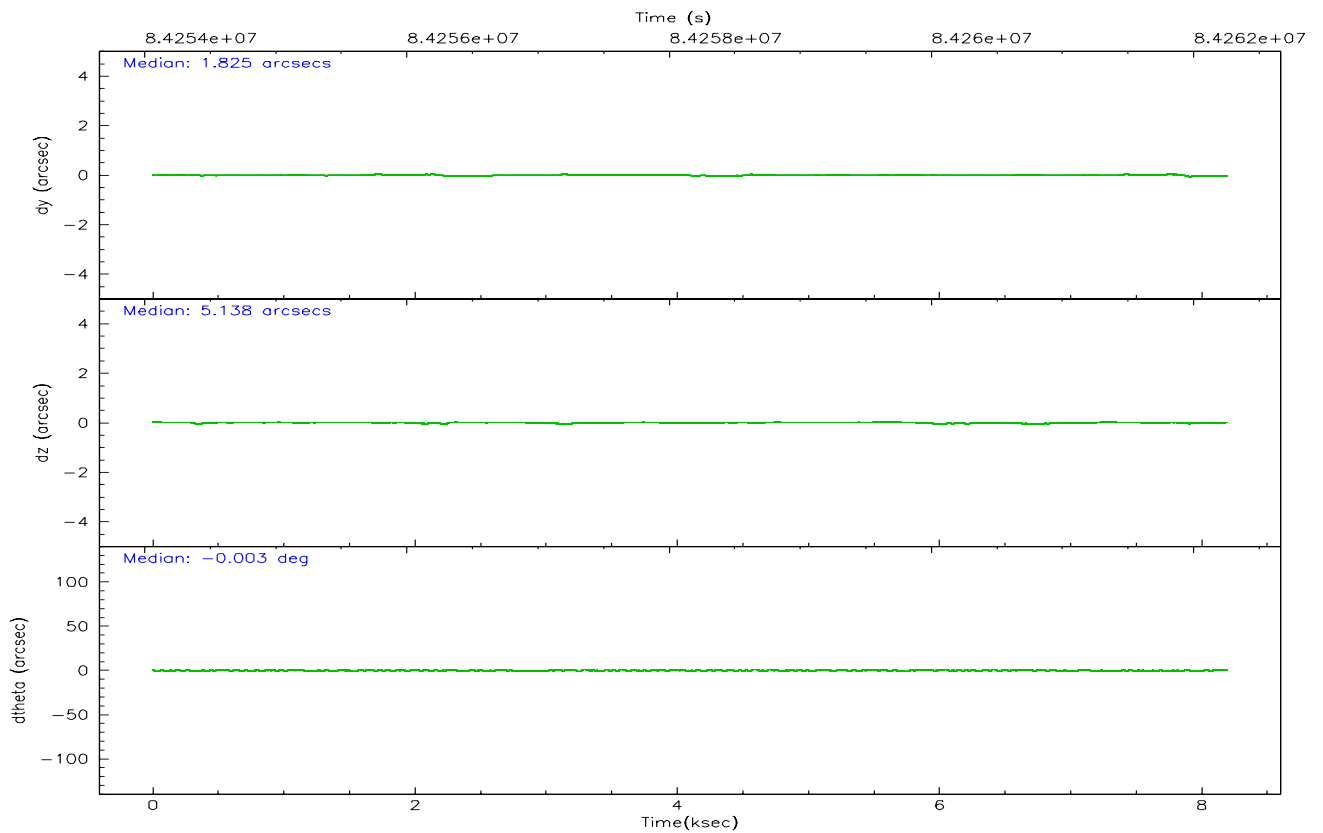
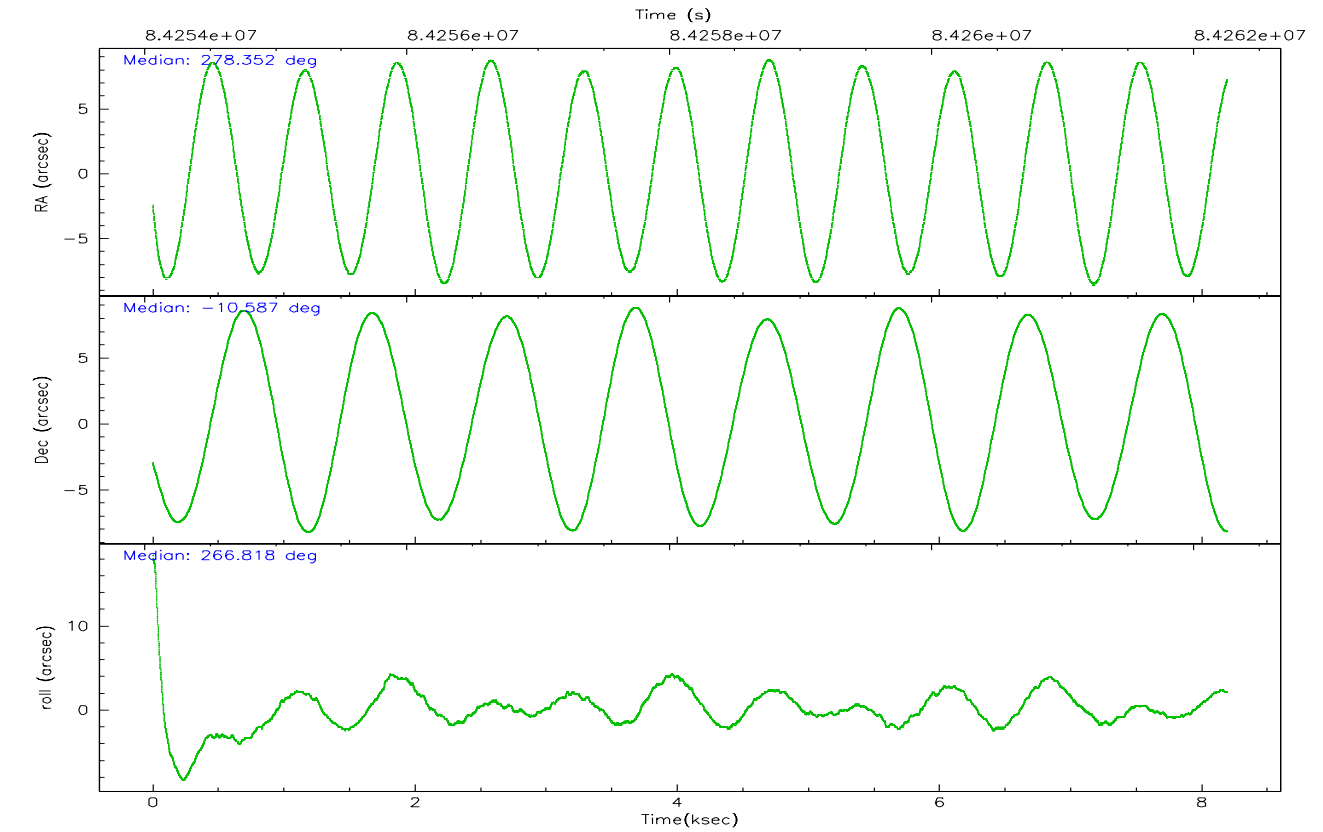
	ccd 0	ccd 1	ccd 2	ccd 3	ccd 6	ccd 7
grade 0 events	2872	2627	2246	2524	2426	8842
	6%	6%	4%	5%	5%	10%
grade 1 events	23	17	23	19	20	100
	0%	0%	0%	0%	0%	0%
grade 2 events	1268	1144	1097	1054	1085	12151
	2%	2%	2%	2%	2%	13%
grade 3 events	578	606	542	548	542	5615
	1%	1%	1%	1%	1%	6%
grade 4 events	538	569	480	537	535	5641
	1%	1%	1%	1%	1%	6%
grade 5 events	1575	1720	1545	1729	1902	5918
	3%	4%	3%	3%	3%	6%
grade 6 events	1033	1041	860	925	1023	21258
	2%	2%	1%	1%	2%	24%
grade 7 events	38816	35170	38794	38967	40508	27890
	83%	81%	85%	84%	84%	31%

2.2 Compared Parameters

Parameter	Planned	Actual	Parameter	Planned	Actual
Instrument	ACIS	ACIS	Obspar format version number	6	6
Detector	ACIS-012367	ACIS-012367	Obspar file type	PREDICTED	ACTUAL
Grating	NONE	NONE	Obspar update status	NONE	UPDATED
Data mode	FAINT	FAINT	Number of optional ACIS chips dropped	0	0
Observation mode	POINTING	POINTING	On-chip summing requested	N	N
Pointing RA	278.339979	278.3526803679384	Subarray requested	NONE	NONE
Pointing Dec	-10.563033	-10.58740884136769	Alternating exposures requested	N	N
Pointing Roll	266.669799	266.828784939639	Primary exposure time	0.000000	3.2
SIM focus pos (mm)	-0.684267	-0.6828225247311905			
SIM defocus (mm)	0	0.001444936568705701			
SIM translation stage pos (mm)	-193.059523	-193.0566717996815			
SIM translation stage offset (mm)	2.927	2.924149216673669			
Observation start time	84254258.184000	84253882.042861			
Observation start date	2000-09-02T03:56:34	2000-09-02T03:51:22			
Observation end time	84262258.184000	84262392.10568			
Observation end date	2000-09-02T06:09:54	2000-09-02T06:13:12			
Read mode	TIMED	TIMED			

2.3 Aspect



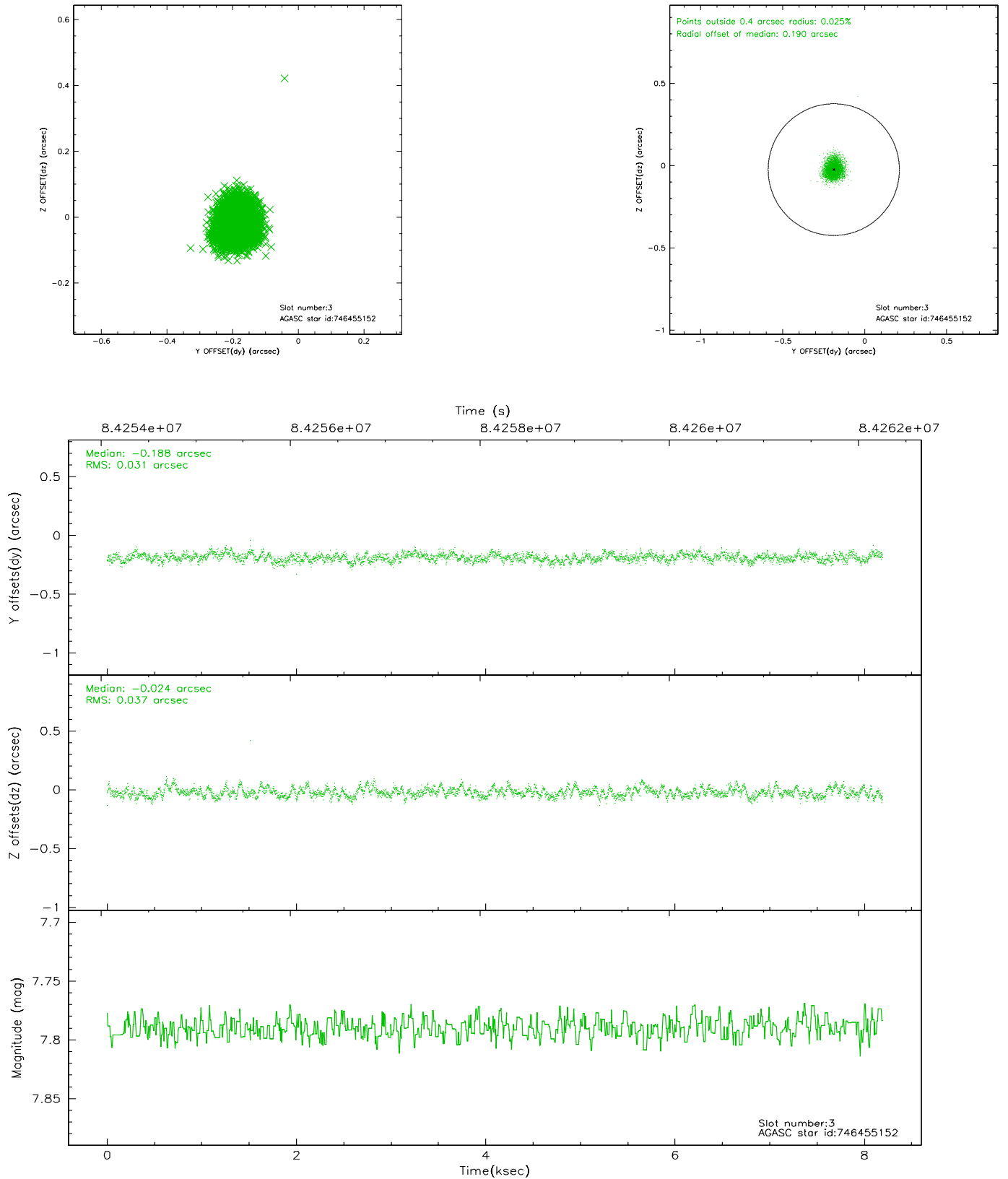


Slot Statistics

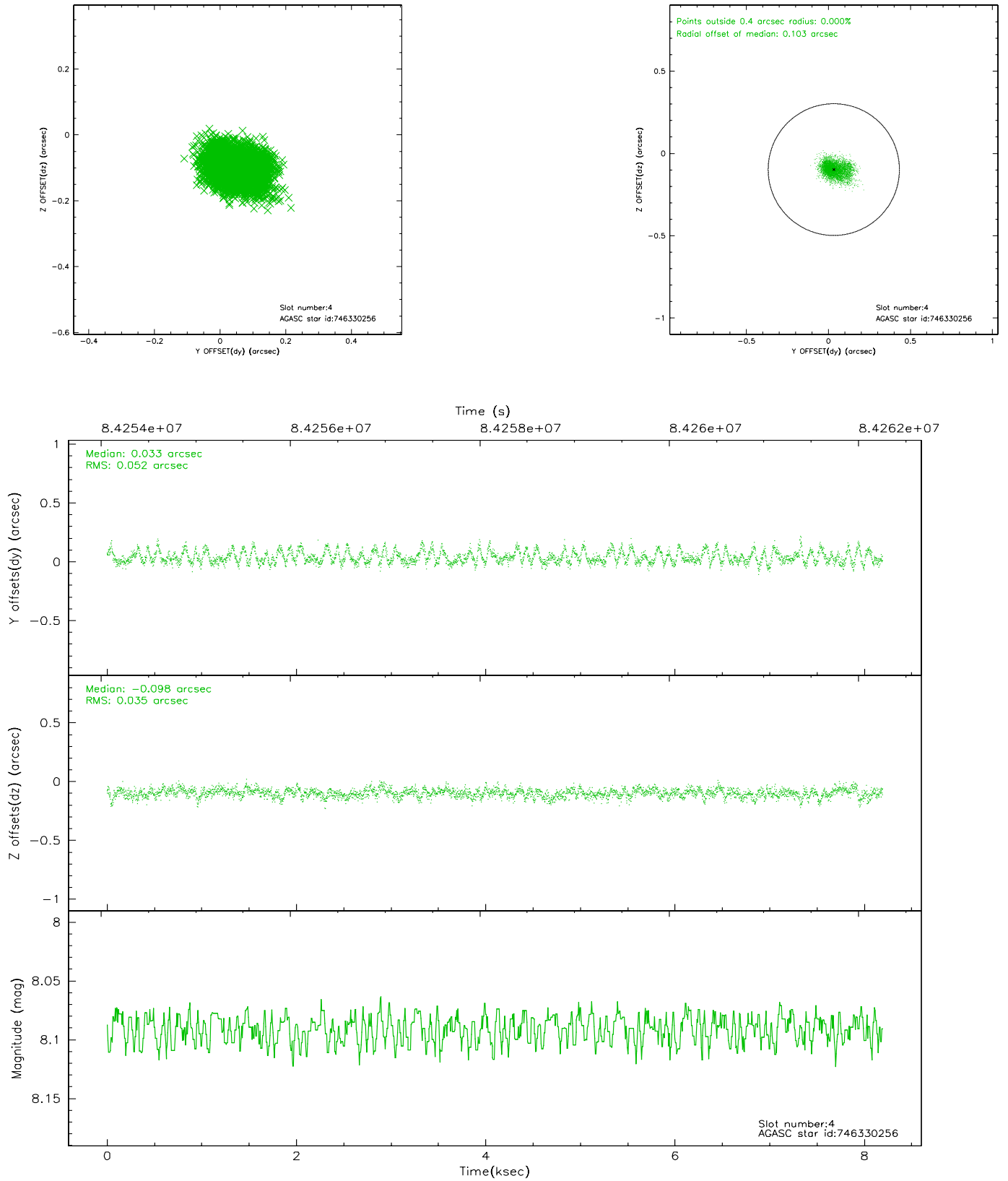
slot	status	id	mag	n_pts	med_dy	med_dz	dr1	dr2	ra	dec	mean_y	mean_z
0	FID	ACIS-S-2	7.11	1999	-0.032	0.047	0.007	0.011	0.000000	0.000000	-754.68	-1666.08
1	FID	ACIS-S-4	7.22	1999	-0.055	0.003	0.005	0.009	0.000000	0.000000	2158.30	241.65
2	FID	ACIS-S-5	7.24	1999	0.056	-0.040	0.006	0.011	0.000000	0.000000	-1806.53	236.11
3	GUIDE	746455152	7.79	3997	-0.188	-0.024	0.051	0.082	278.447893	-9.976732	-2128.83	259.72
4	GUIDE	746330256	8.09	3997	0.033	-0.098	0.066	0.112	277.634401	-10.863955	1229.93	-2426.34
5	GUIDE	746462456	8.38	3994	-0.017	0.182	0.060	0.097	278.652171	-10.530173	-180.86	1096.58
6	GUIDE	746455112	8.92	3998	0.171	-0.165	0.075	0.121	278.266531	-10.703234	519.83	-229.06
7	GUIDE	746461728	9.79	3995	-0.009	0.106	0.109	0.174	278.986921	-10.530755	-246.27	2280.04

2.4 Star Slots

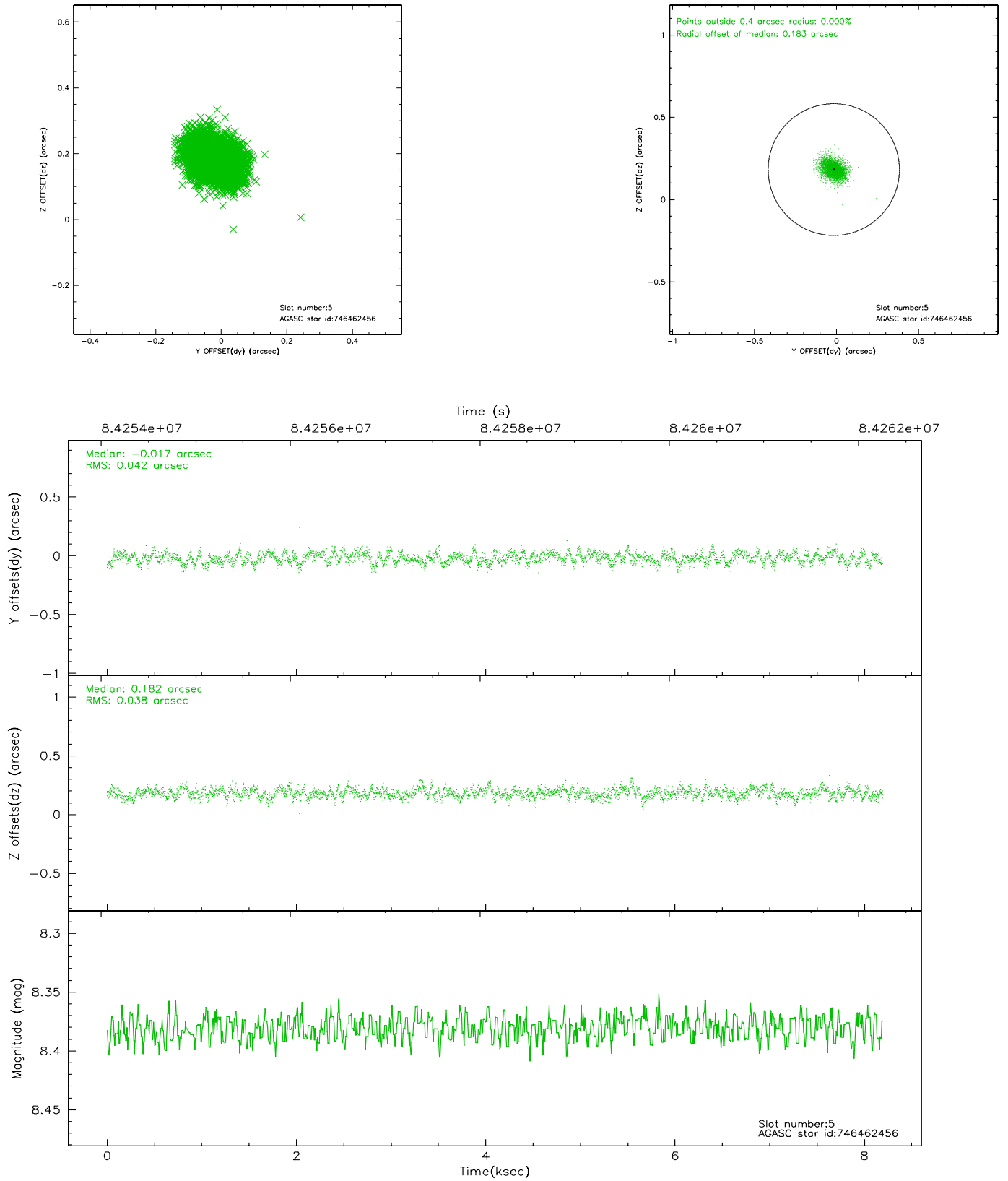
2.4.1 Slot 3



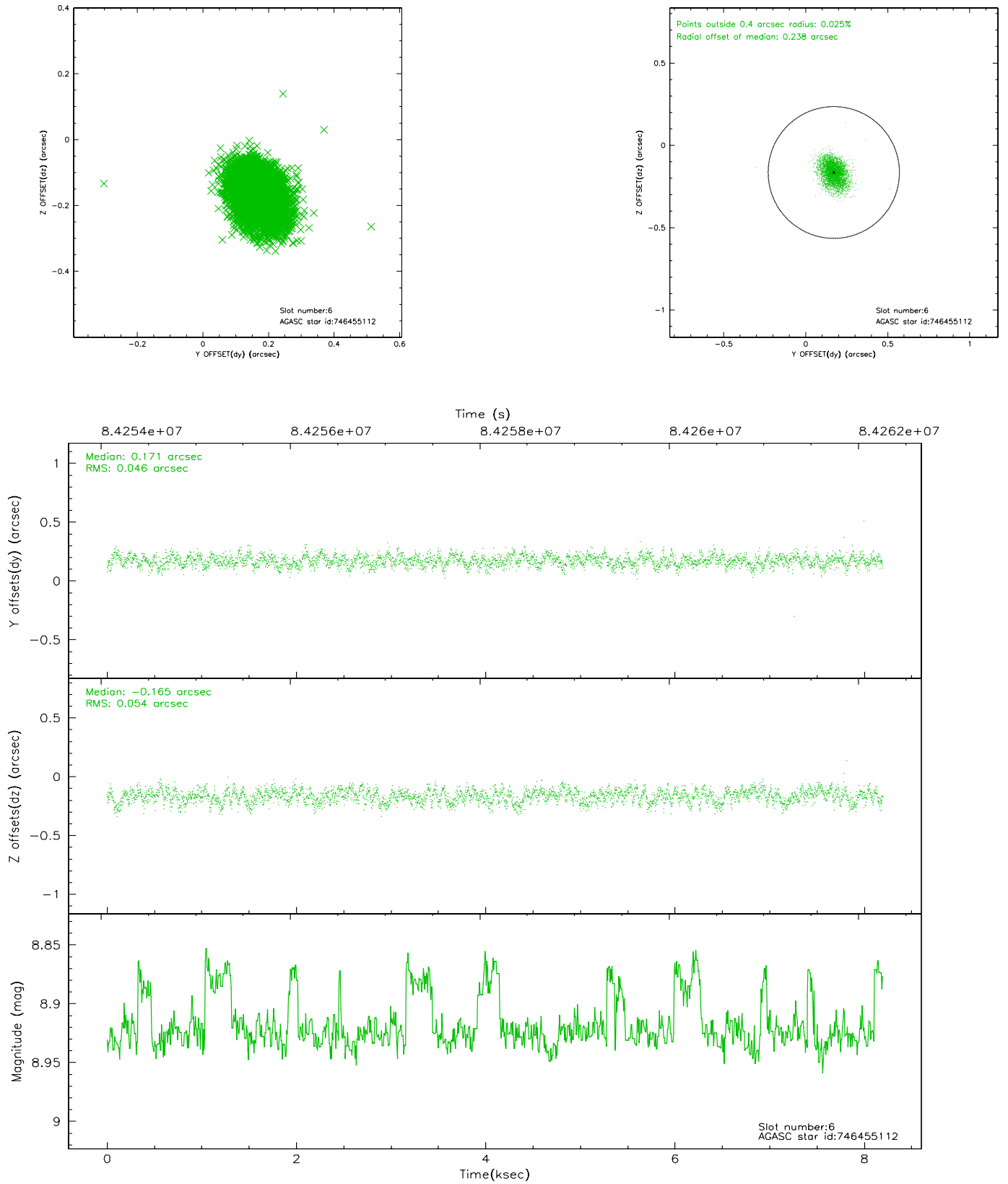
2.4.2 Slot 4



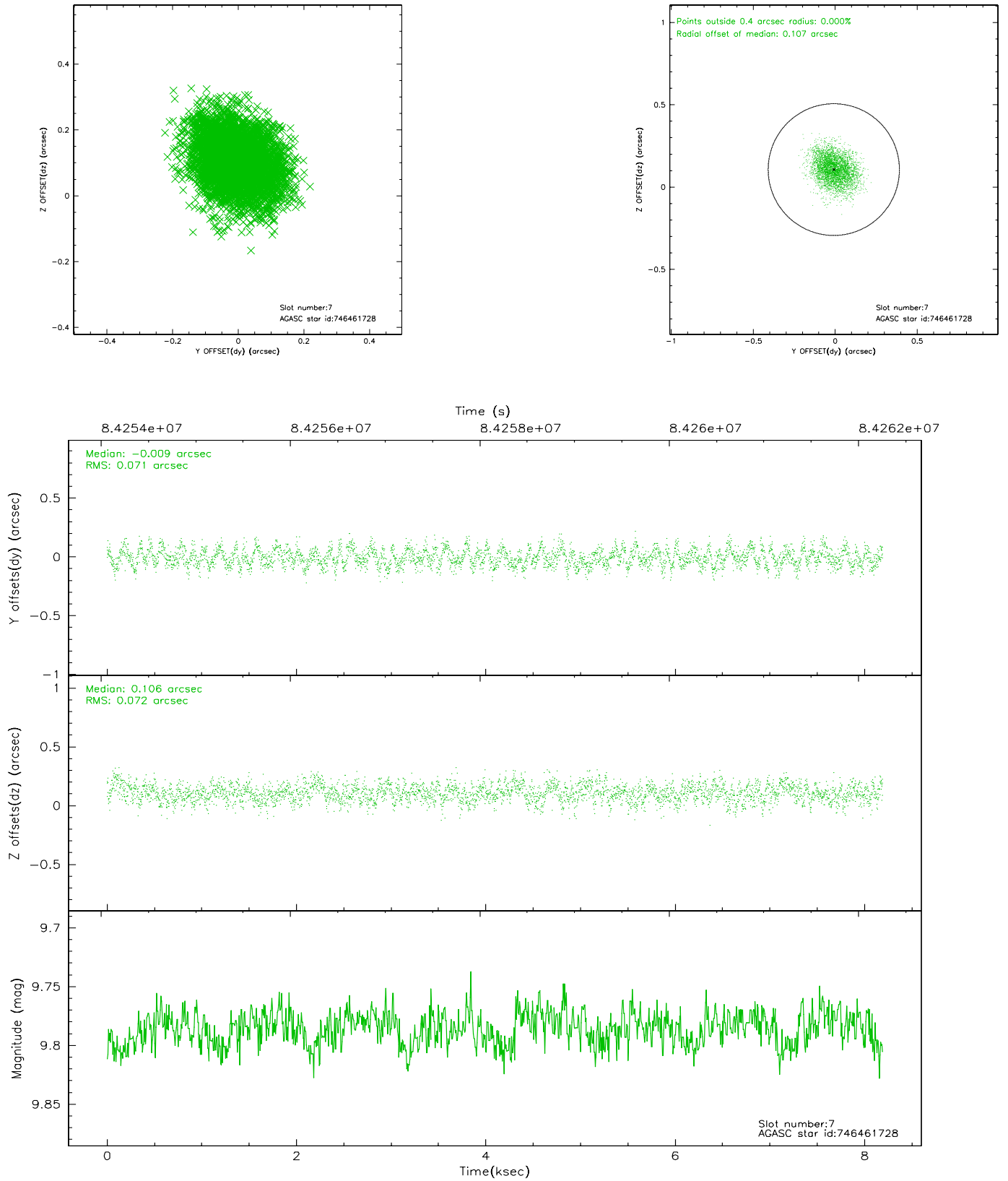
2.4.3 Slot 5



2.4.4 Slot 6

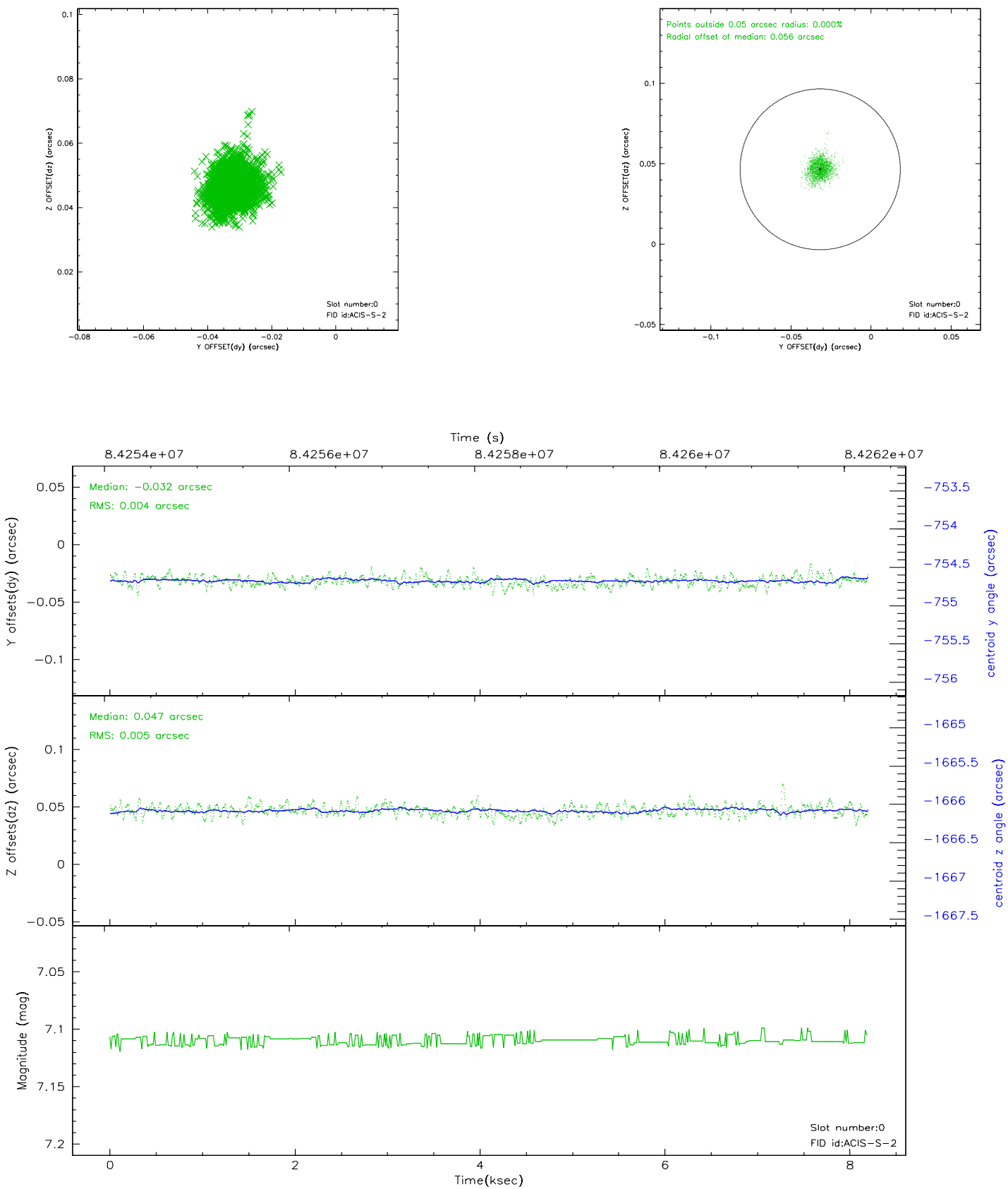


2.4.5 Slot 7

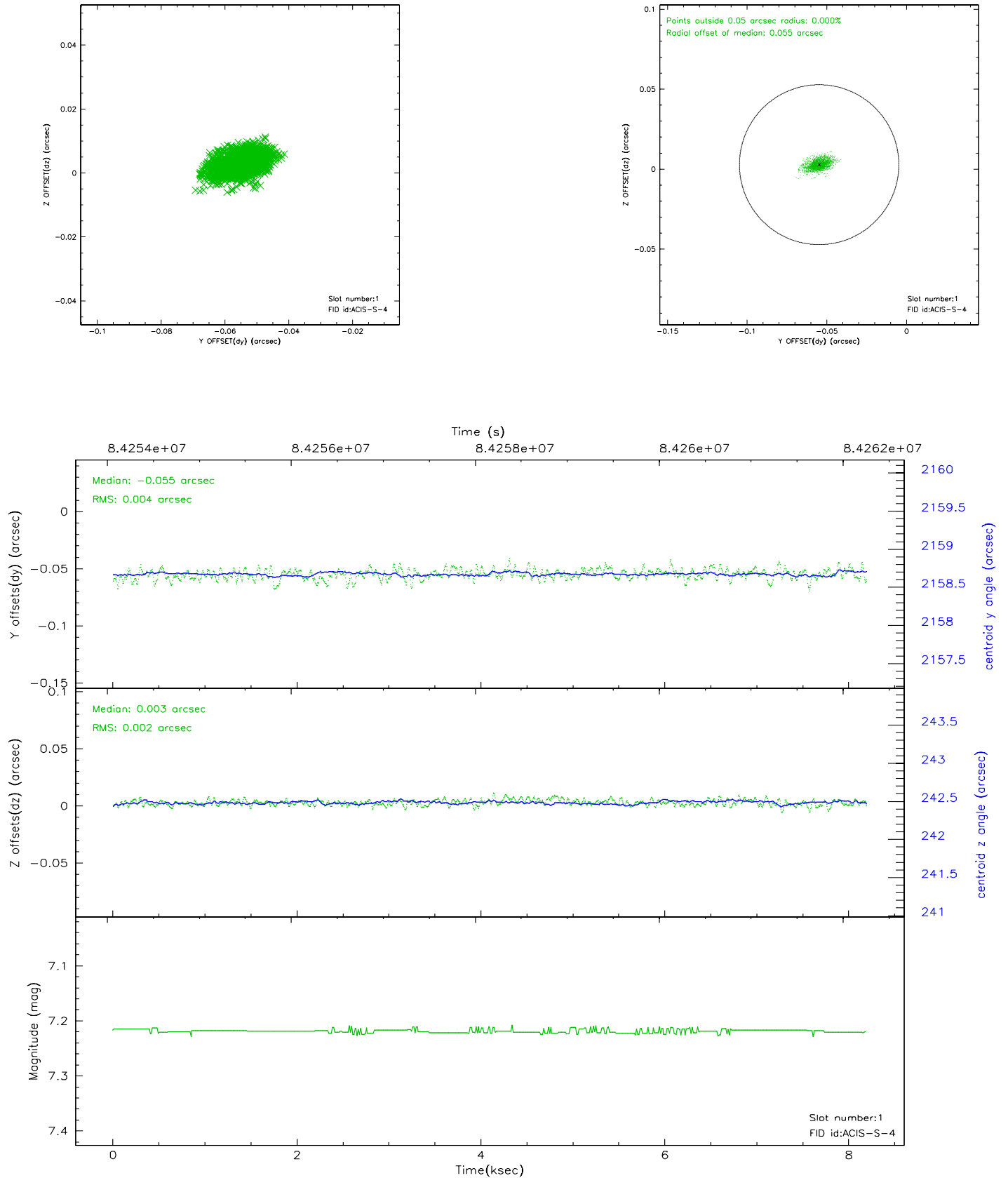


2.5 FID Slots

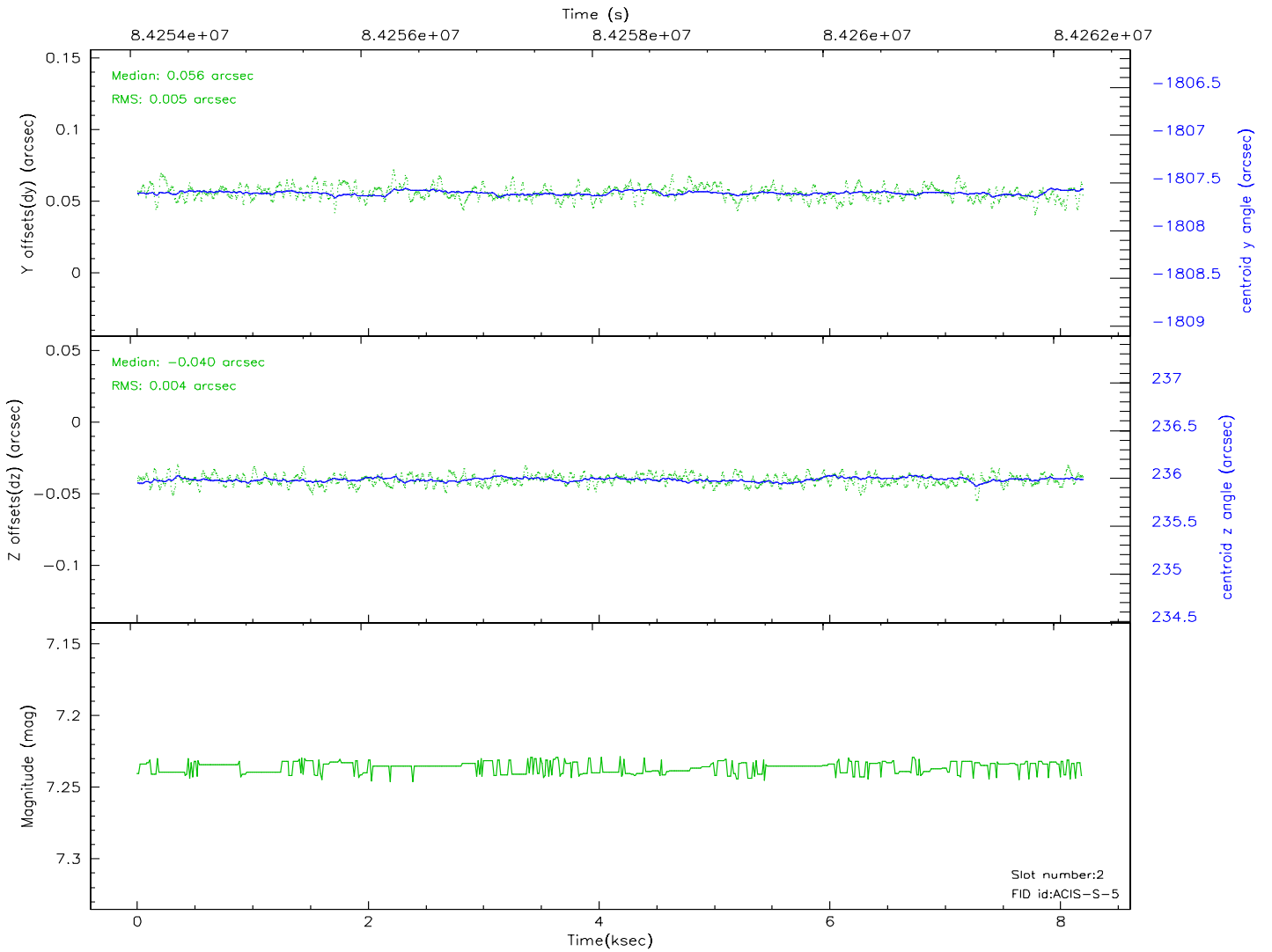
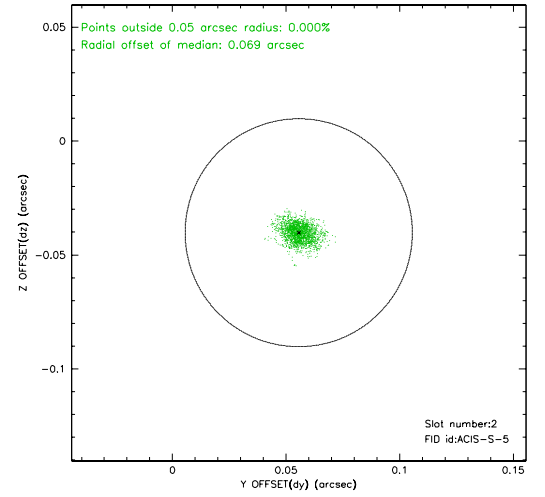
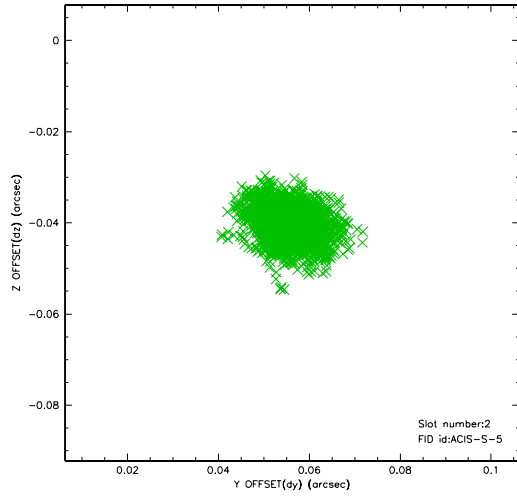
2.5.1 Slot 0



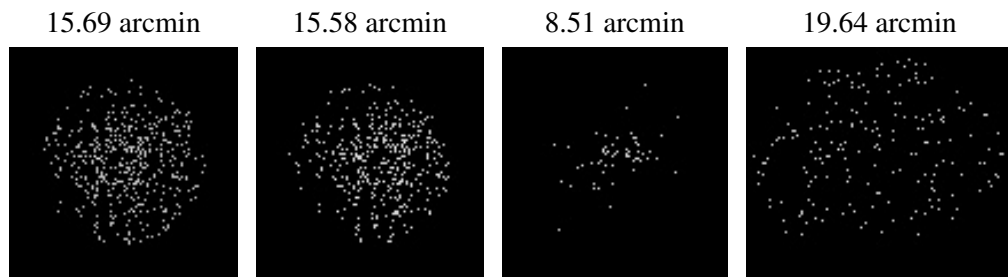
2.5.2 Slot 1



2.5.3 Slot 2



3 Point Sources



A Summary

A.1 Status

V&V Scientist	Jen Lauer
V&V Date (YYYY-MM-DD)	2007.06.06
V&V Edition	1
V&V Disposition and Status	OK
V&V Charge Time	7.756

A.2 Comments