

V&V Reference Report

L2 ASCDS Version : 7.6.10

Observation 1785 - L2 Version 4
Chandra X-Ray Center

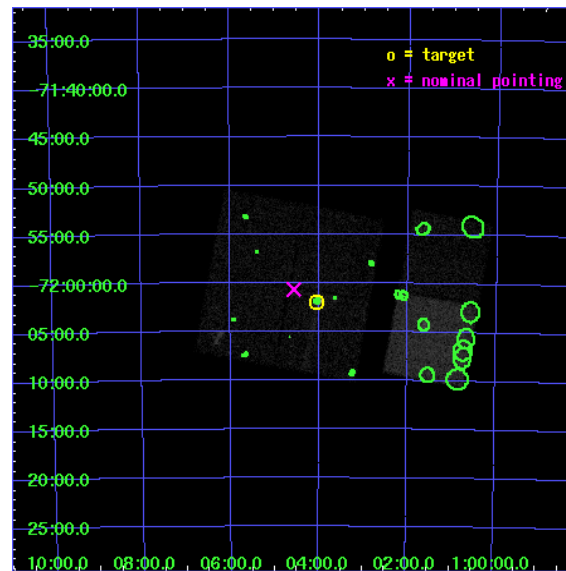
L2 Processing Date : Nov 20 2008

Contents

1	Front	2
2	OBI	3
2.1	OBI	3
2.1.1	Images	3
2.1.2	Bias	3
2.1.3	Parameters	4
2.1.4	Events	4
2.2	Compared Parameters	5
2.3	Aspect	6
2.4	Star Slots	9
2.4.1	Slot 3	9
2.4.2	Slot 4	10
2.4.3	Slot 5	11
2.4.4	Slot 6	12
2.4.5	Slot 7	13
2.5	FID Slots	14
2.5.1	Slot 0	14
2.5.2	Slot 1	15
2.5.3	Slot 2	16
3	Point Sources	17
A	Summary	18
A.1	Status	18
A.2	Comments	18

1 Front

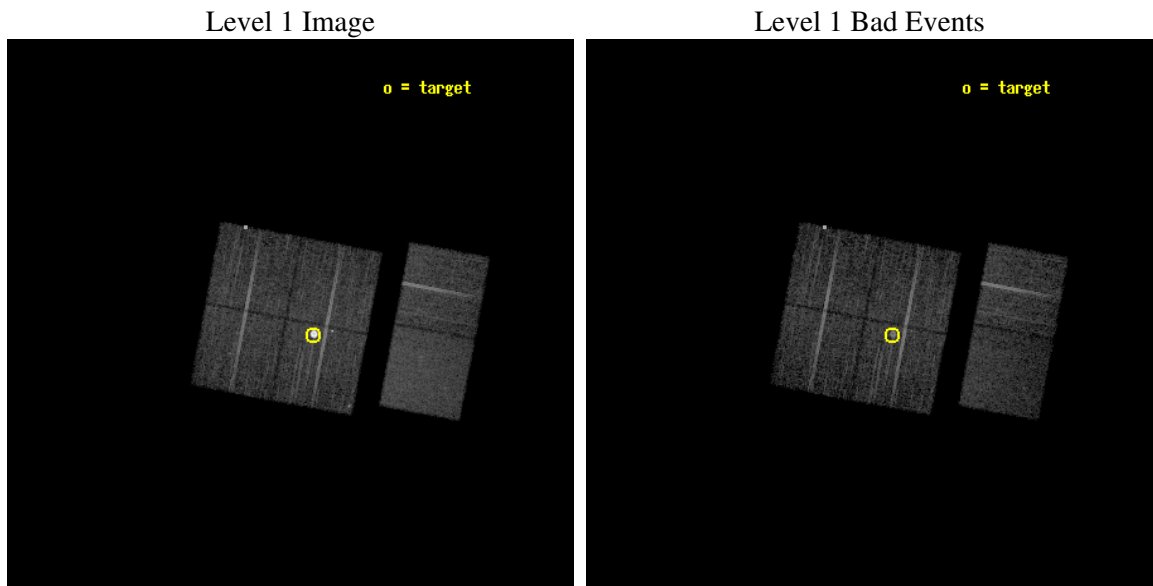
seq_num	590211
obs_id	1785
title	ACIS CHIP RESPONSE TO LINES WITH E=0.6-1.5 KEV
observer	Dr. CXC Calibration
object	E0102-72.3 [Chip I3, T=110, Offsets=-0,2,0]
dtcycle	0
cycle	P
ra_targ	16.01
dec_targ	-72.032028
ra_nom	16.14109576993
dec_nom	-72.011459299592
roll_nom	100.69340480459
revision	4
ontime	7680.0000071526
livetime	7582.7512227212
ontime0	7680.0000071526
ontime1	7680.0000071526
ontime2	7680.0000071526
ontime3	7680.0000071526
ontime6	7676.7590169907
ontime7	7680.0000071526
l2events	79539



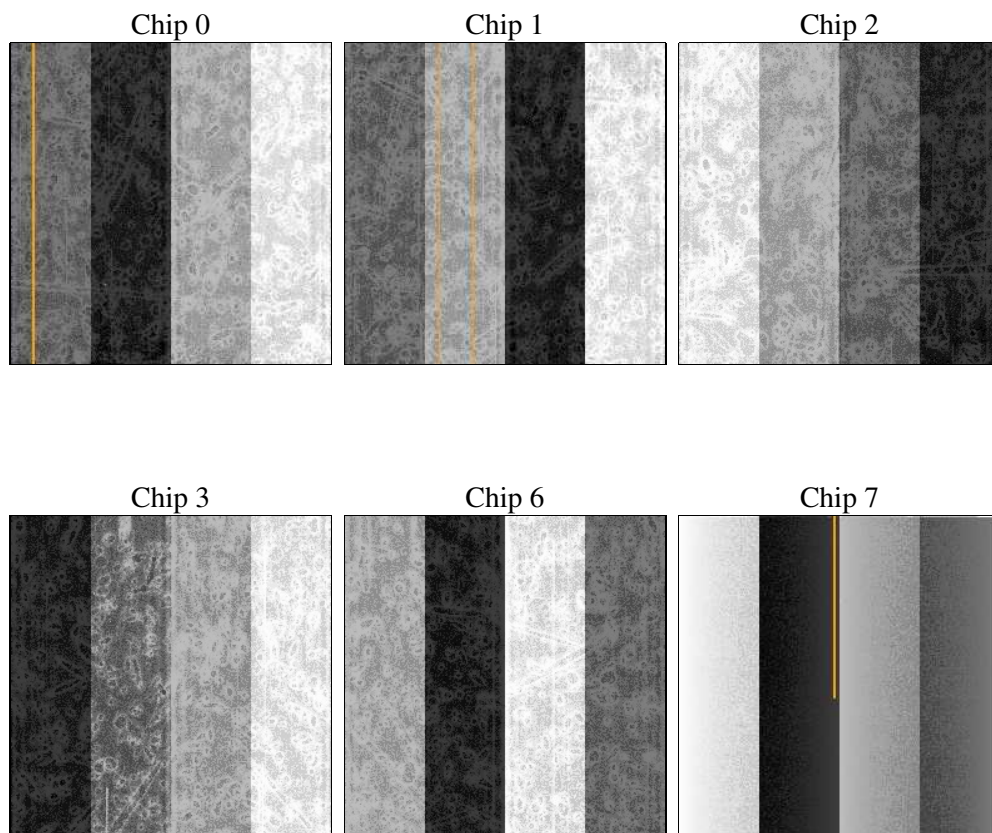
2 OBI

2.1 OBI

2.1.1 Images



2.1.2 Bias



2.1.3 Parameters

obi_num	0
ascdsver	7.6.11.9
caldsver	3.5.0
date	2008-11-20T15:15:48
revision	4

sched_exp_time	7920.000000
ontime	7680.0000071526
ontime0	7680.0000071526
ontime1	7680.0000071526
ontime2	7680.0000071526
ontime3	7680.0000071526
ontime6	7676.7590169907
ontime7	7680.0000071526
l1events	361916

2.1.4 Events

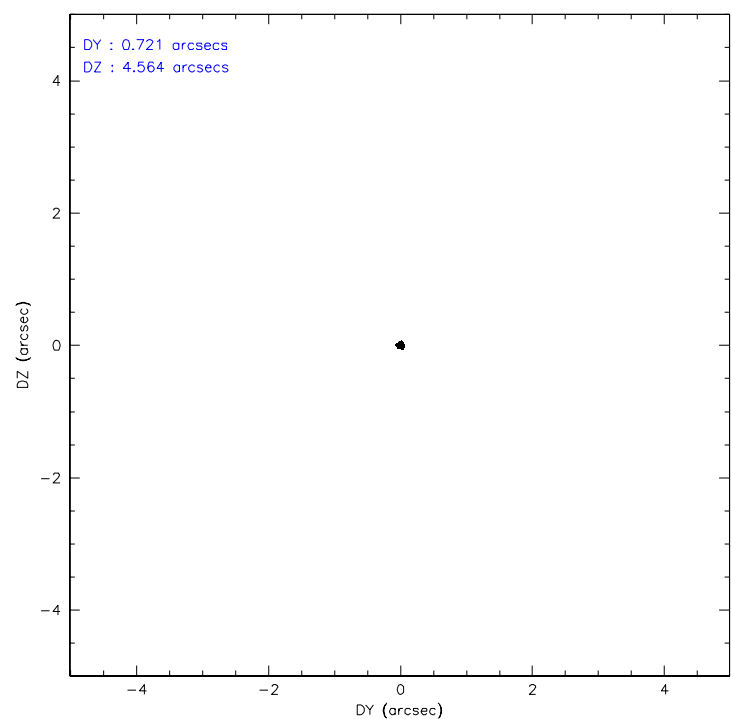
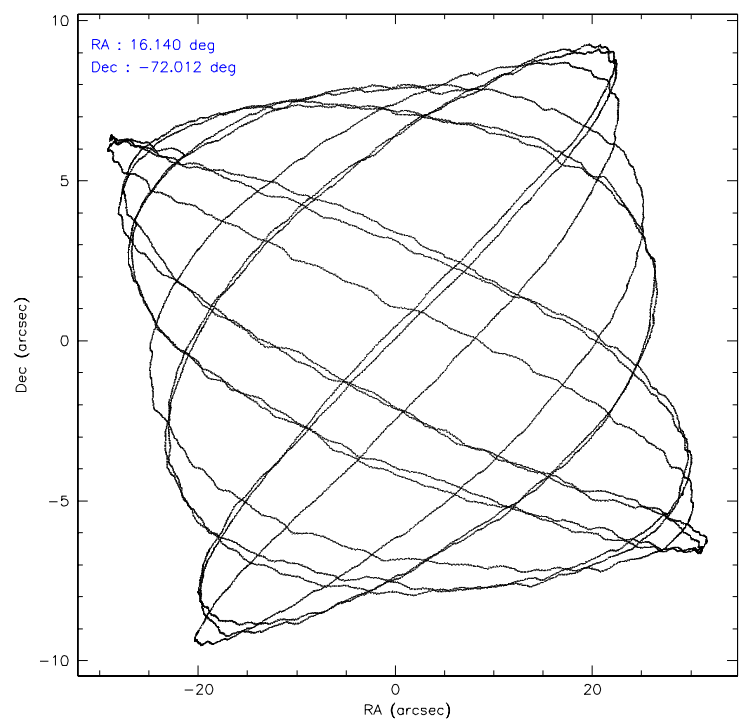
	ccd 0	ccd 1	ccd 2	ccd 3	ccd 6	ccd 7
level 1 events	53448	50043	54492	85860	56562	61511
rejected events	47914	43672	49248	49736	50732	37949
rejected %	89%	87%	90%	57%	89%	61%

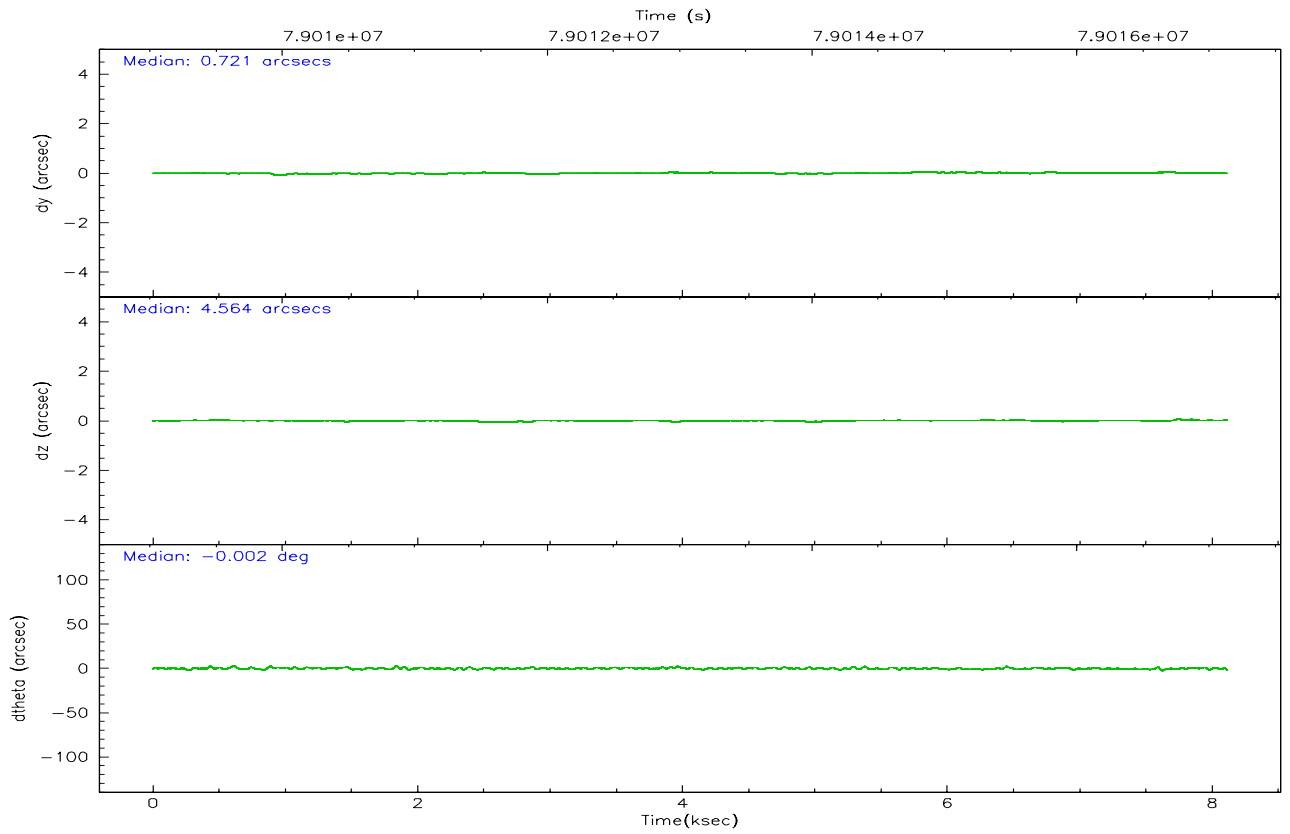
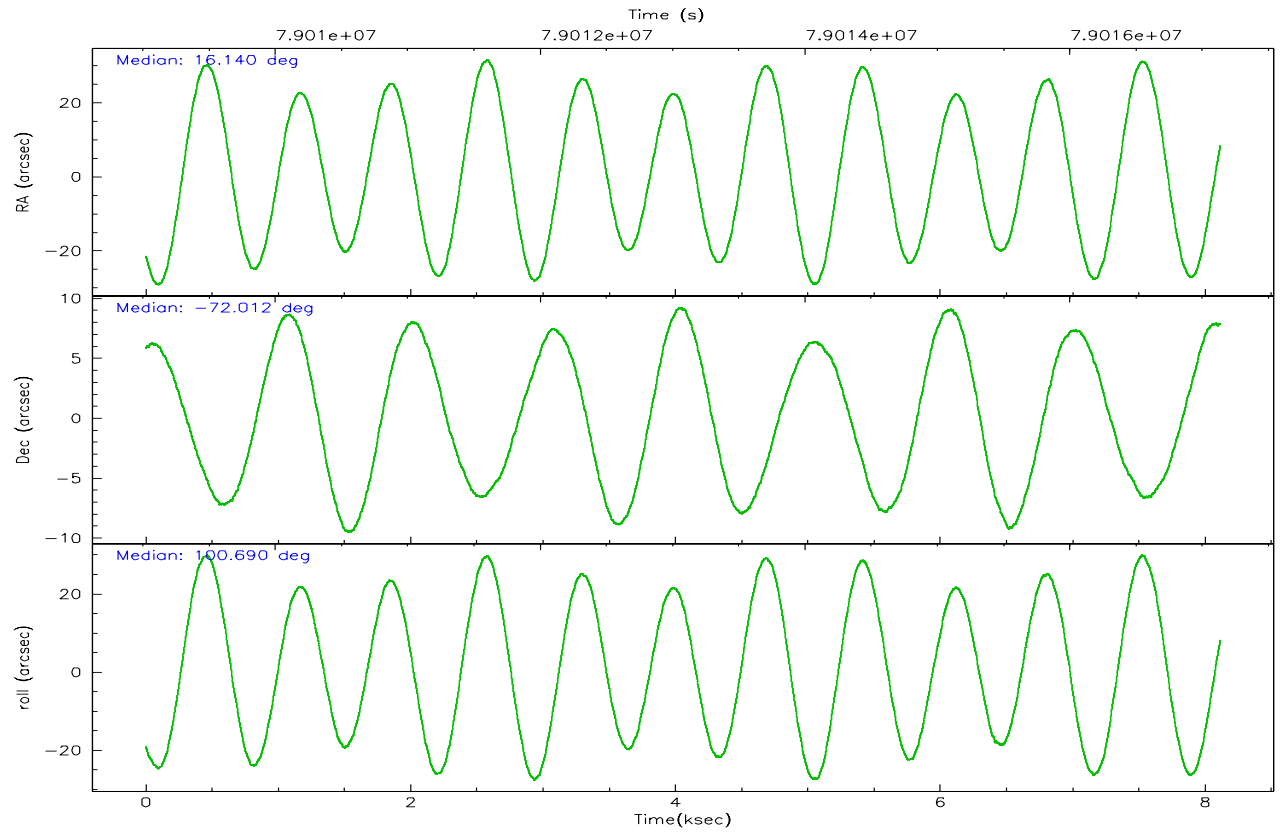
	ccd 0	ccd 1	ccd 2	ccd 3	ccd 6	ccd 7
grade 0 events	1277	1938	1274	22140	1295	1632
	2%	3%	2%	25%	2%	2%
grade 1 events	2290	10	13	241	12	31
	4%	0%	0%	0%	0%	0%
grade 2 events	2153	2120	1995	10962	2242	5112
	4%	4%	3%	12%	3%	8%
grade 3 events	409	470	342	645	326	1440
	0%	0%	0%	0%	0%	2%
grade 4 events	378	443	339	629	336	1208
	0%	0%	0%	0%	0%	1%
grade 5 events	1034	1118	973	1343	1200	3623
	1%	2%	1%	1%	2%	5%
grade 6 events	1323	1407	1300	1787	1634	14197
	2%	2%	2%	2%	2%	23%
grade 7 events	44584	42537	48256	48113	49517	34268
	83%	85%	88%	56%	87%	55%

2.2 Compared Parameters

Parameter	Planned	Actual	Parameter	Planned	Actual
Instrument	ACIS	ACIS	Obspar format version number	6	6
Detector	ACIS-012367	ACIS-012367	Obspar file type	PREDICTED	ACTUAL
Grating	NONE	NONE	Obspar update status	NONE	UPDATED
Data mode	FAINT	FAINT	Number of optional ACIS chips dropped	0	0
Observation mode	POINTING	POINTING	On-chip summing requested	N	N
Pointing RA	16.199252	16.14109576992955	Subarray requested	NONE	NONE
Pointing Dec	-72.032462	-72.01145929959236	Alternating exposures requested	N	N
Pointing Roll	100.540032	100.6934048045916	Primary exposure time	3.200000	3.2
SIM focus pos (mm)	-0.782348	-0.7809083437167272			
SIM defocus (mm)	0	0.001439871863259334			
SIM translation stage pos (mm)	-233.592463	-233.5874344608287			
SIM translation stage offset (mm)	0	-0.005018542100998502			
Observation start time	79009219.184000	79008843.072569			
Observation start date	2000-07-03T10:59:15	2000-07-03T10:54:03			
Observation end time	79017139.184000	79017273.185379			
Observation end date	2000-07-03T13:11:15	2000-07-03T13:14:33			
Read mode	TIMED	TIMED			

2.3 Aspect



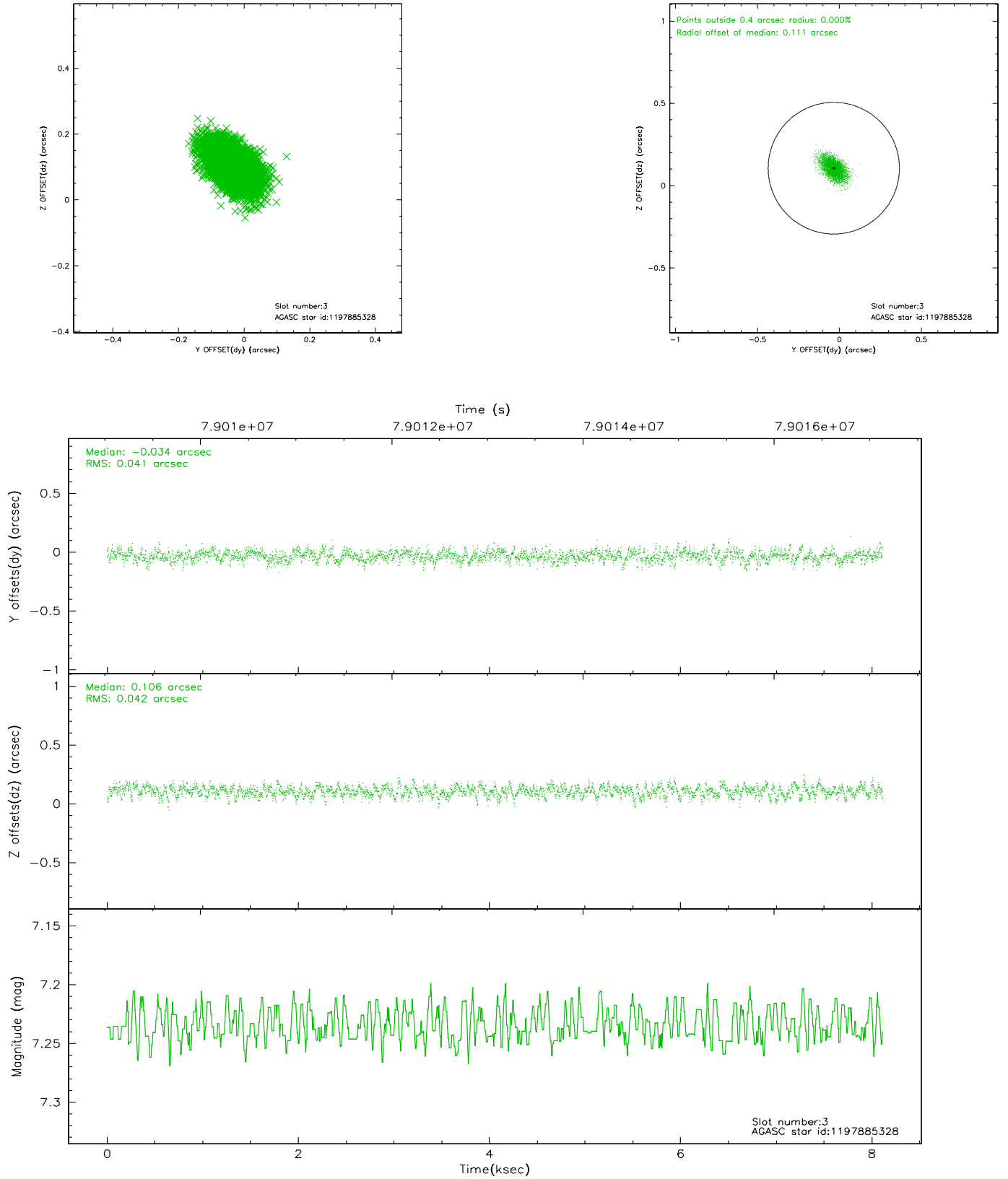


Slot Statistics

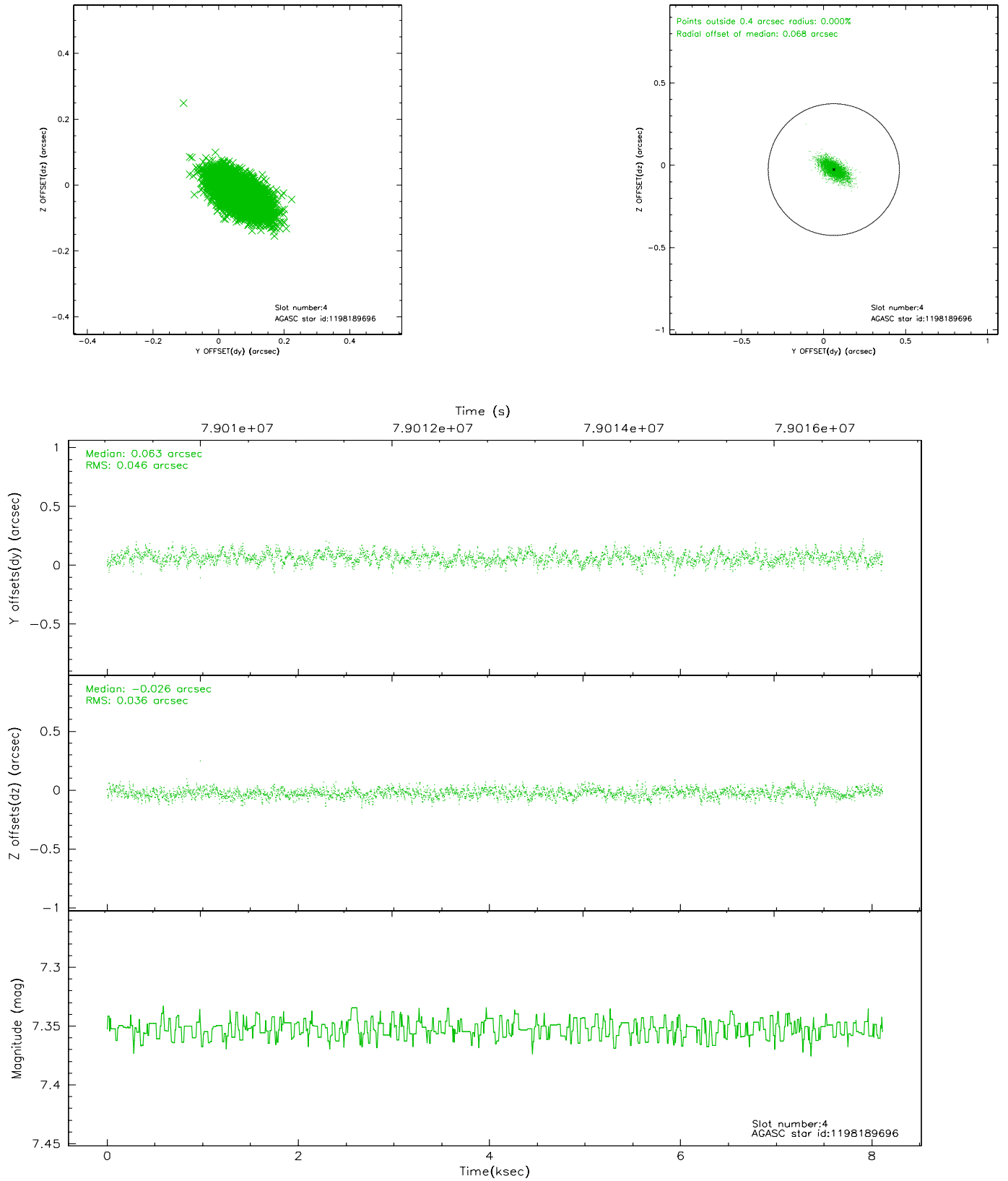
slot	status	id	mag	n_pts	med_dy	med_dz	dr1	dr2	ra	dec	mean_y	mean_z
0	FID	ACIS-I-2	7.15	1979	-0.029	0.023	0.006	0.010	0.000000	0.000000	-755.06	-834.24
1	FID	ACIS-I-4	7.19	1979	-0.074	0.030	0.006	0.011	0.000000	0.000000	2158.63	1071.61
2	FID	ACIS-I-6	7.27	1979	0.003	0.010	0.009	0.014	0.000000	0.000000	405.93	1714.55
3	GUIDE	1197885328	7.24	3957	-0.034	0.106	0.061	0.104	16.283090	-71.733943	1039.08	-290.35
4	GUIDE	1198189696	7.35	3956	0.063	-0.026	0.061	0.106	15.223750	-72.697522	-2170.94	1465.33
5	GUIDE	1197750936	7.57	3958	-0.128	-0.078	0.059	0.097	15.387940	-71.549550	1871.33	591.40
6	GUIDE	1197884536	8.49	3958	0.003	0.043	0.062	0.108	17.160729	-71.835289	492.46	-1189.73
7	GUIDE	1197749664	9.57	3958	0.095	-0.042	0.086	0.143	15.809015	-72.366369	-1105.17	637.28

2.4 Star Slots

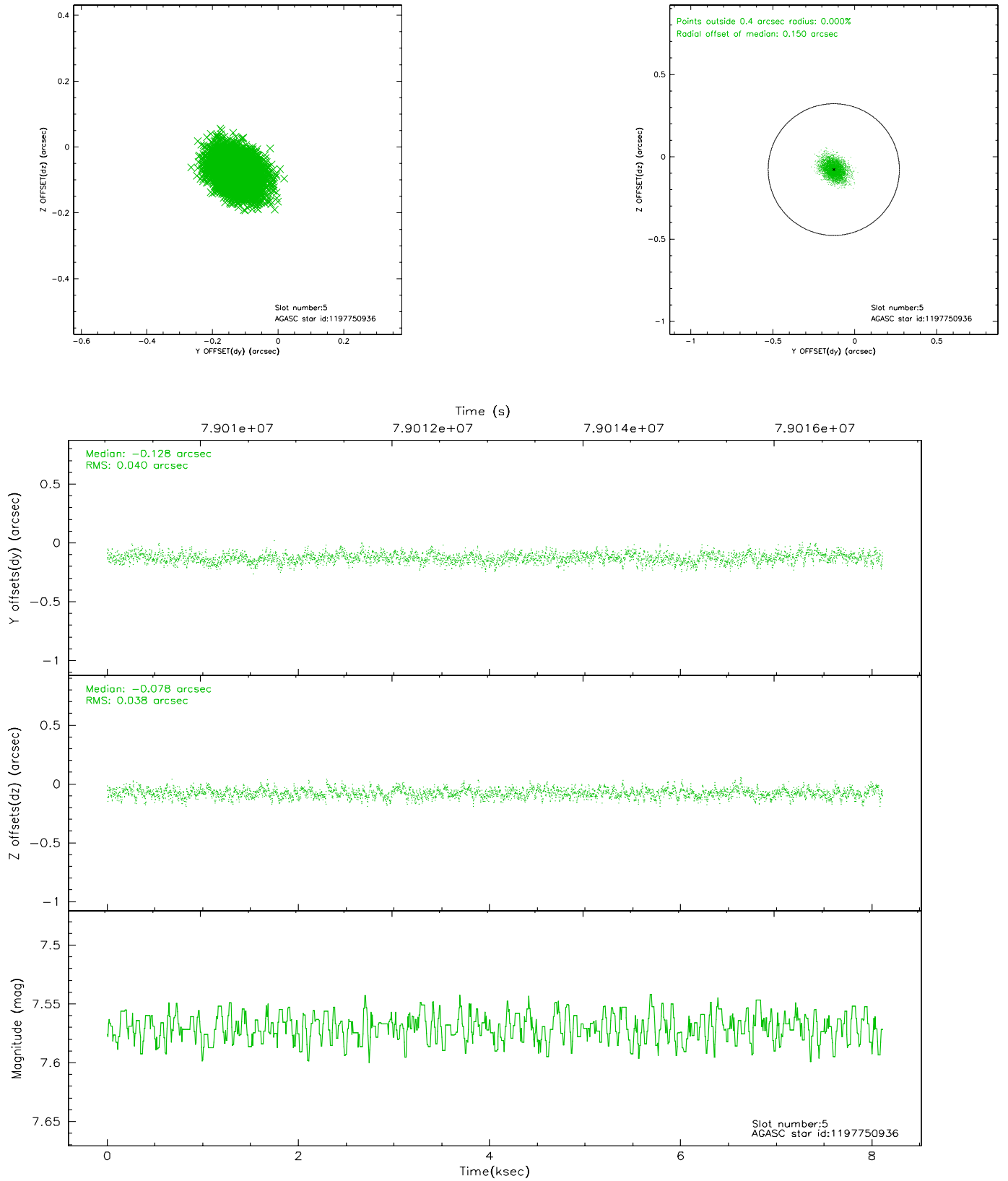
2.4.1 Slot 3



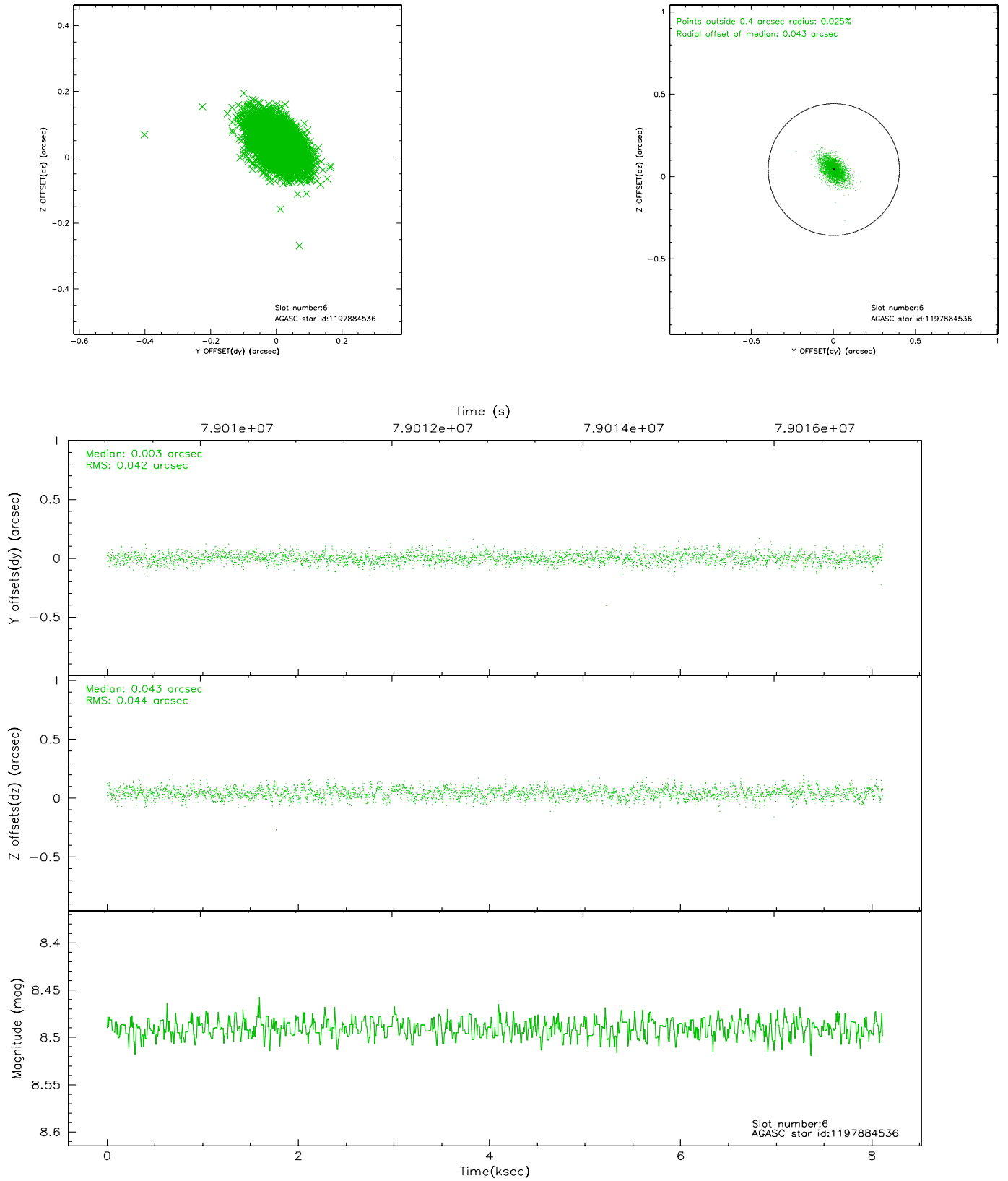
2.4.2 Slot 4



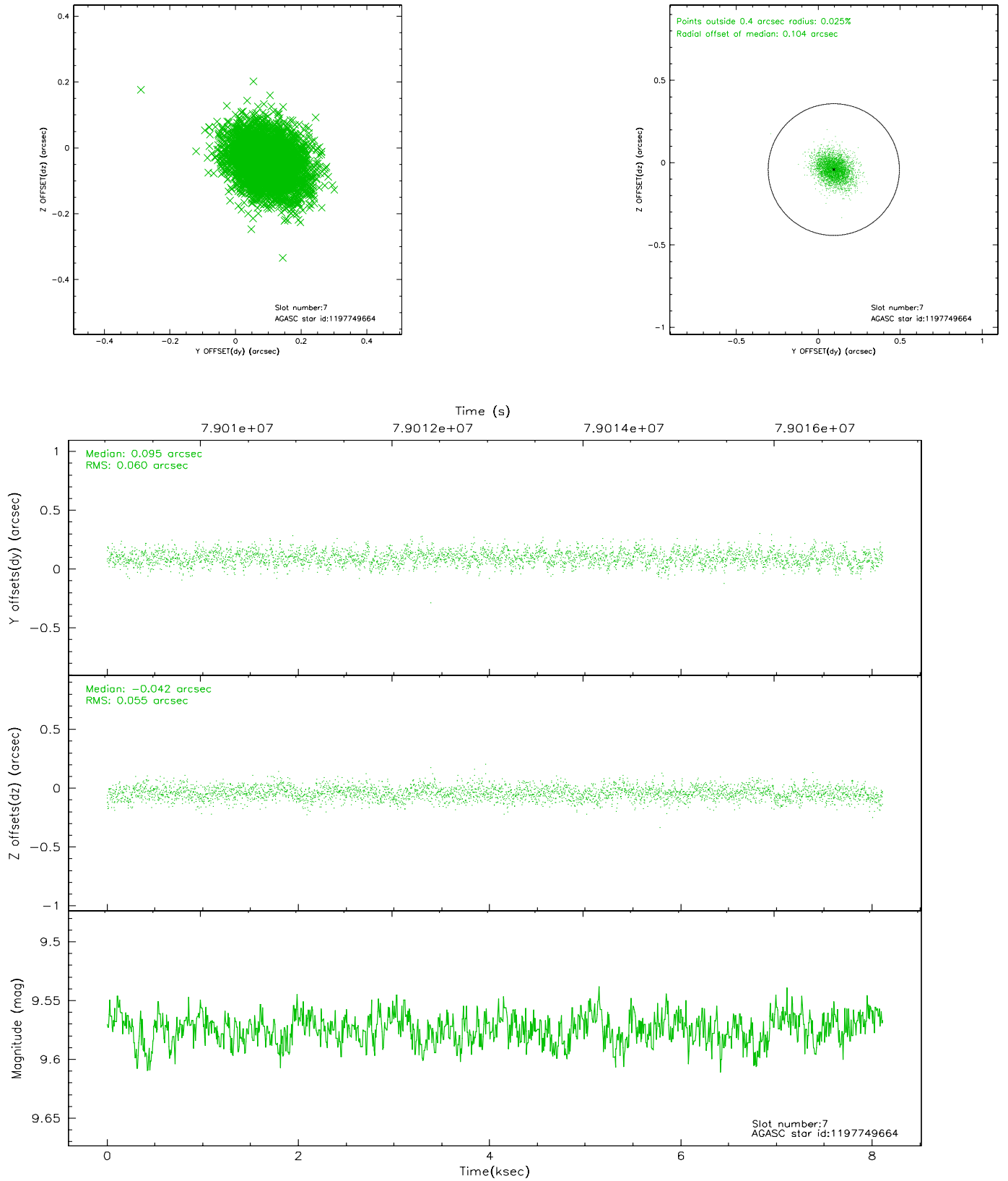
2.4.3 Slot 5



2.4.4 Slot 6

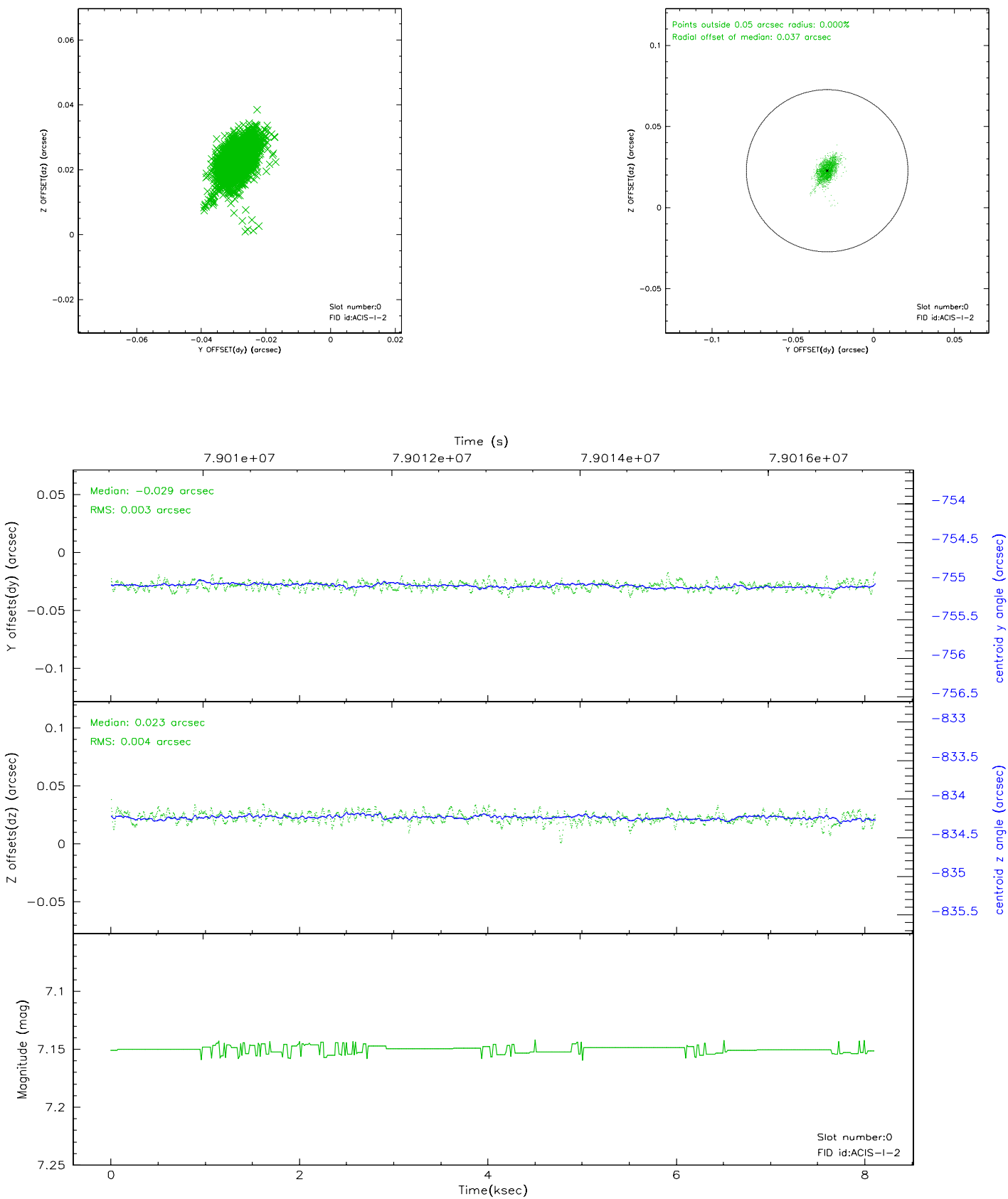


2.4.5 Slot 7

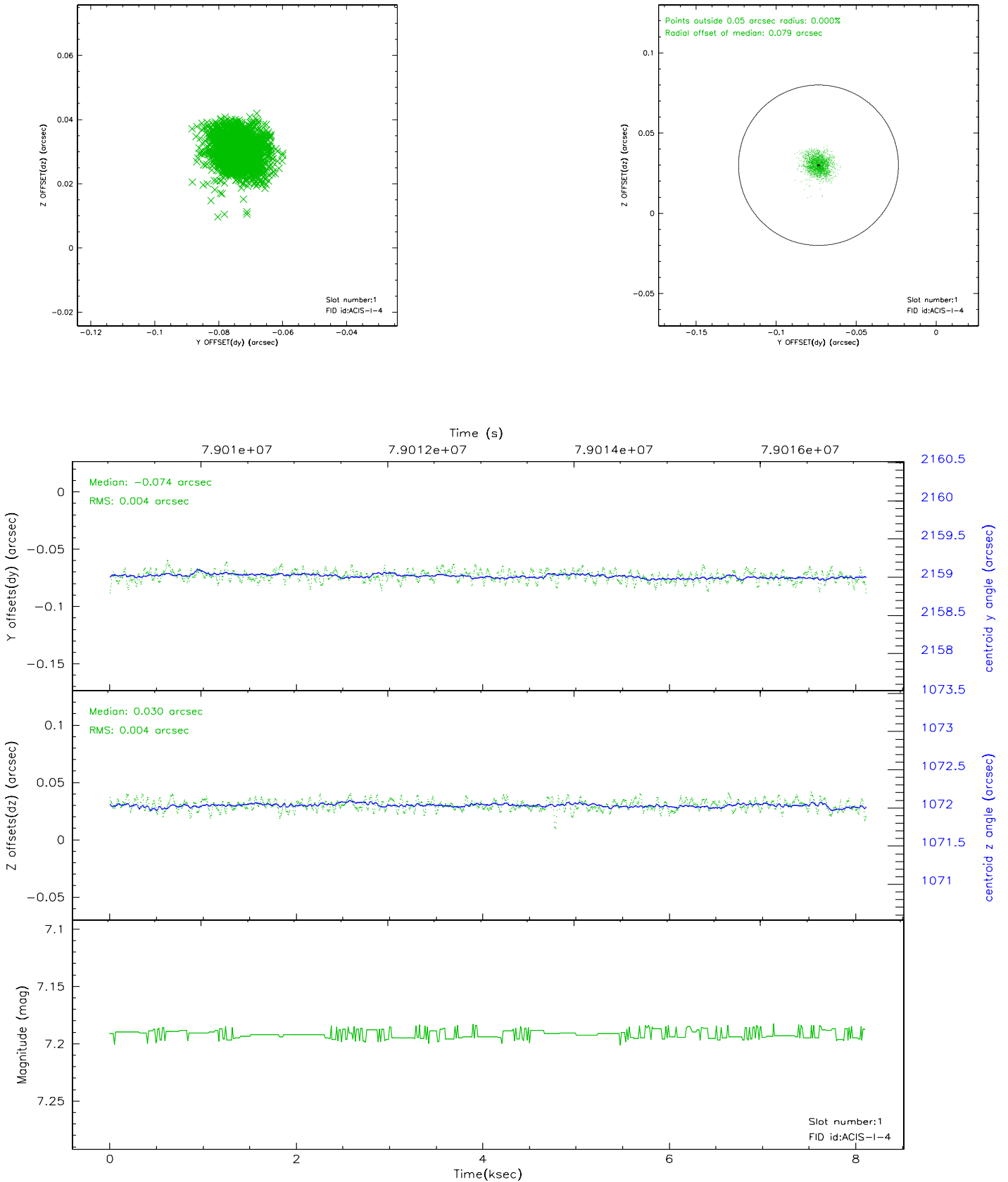


2.5 FID Slots

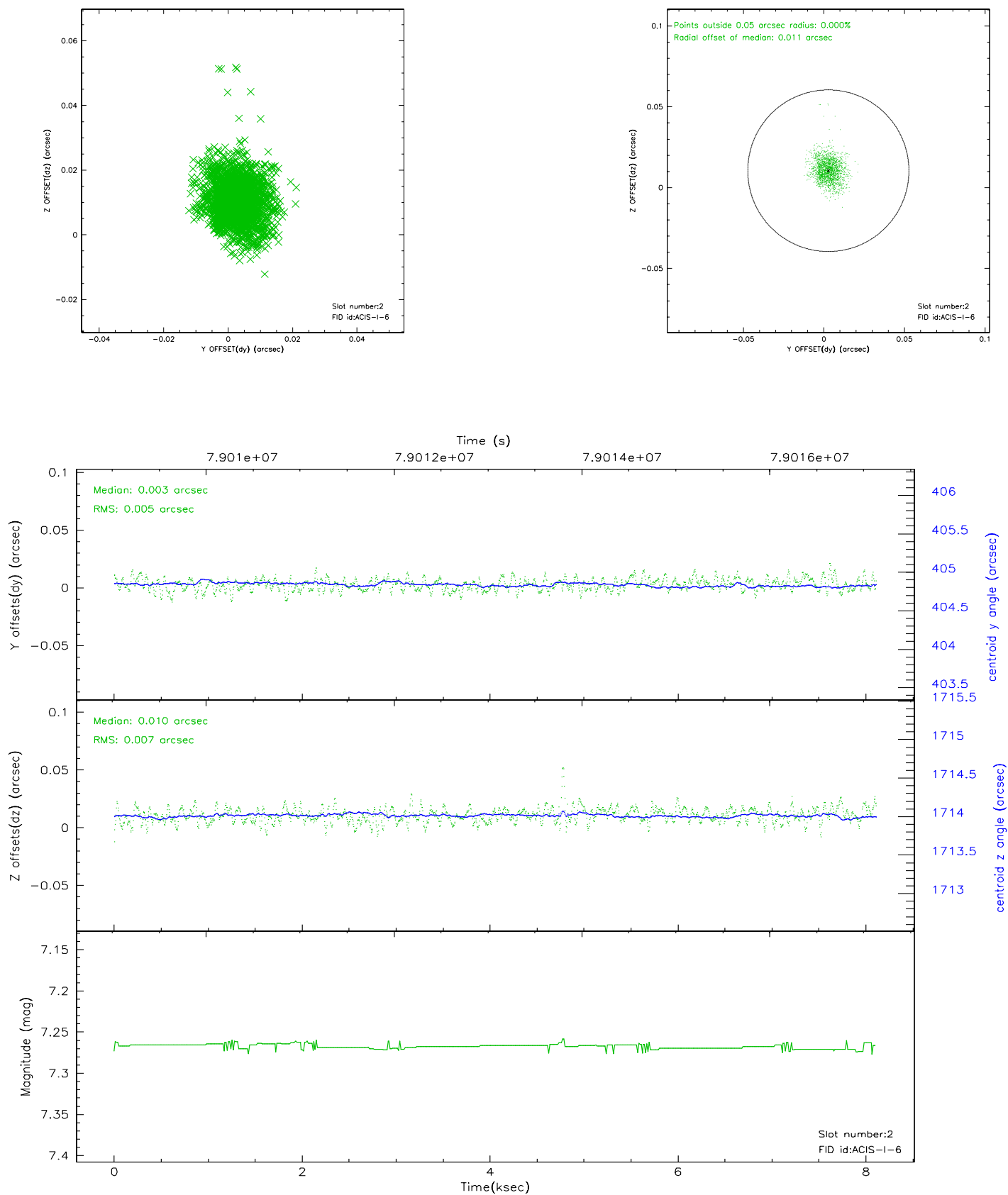
2.5.1 Slot 0



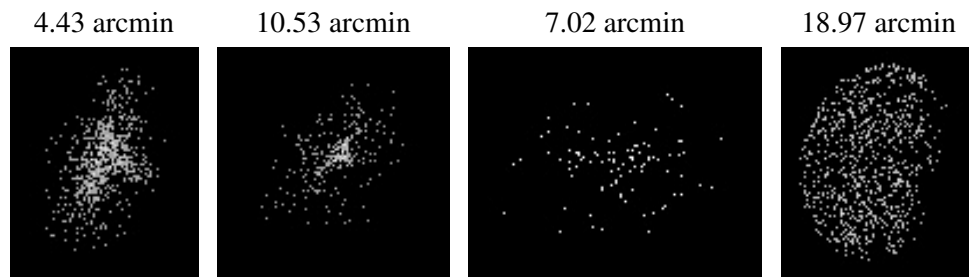
2.5.2 Slot 1



2.5.3 Slot 2



3 Point Sources



A Summary

A.1 Status

V&V Scientist	Joy Nichols
V&V Date (YYYY-MM-DD)	2008.11.21
V&V Edition	1
V&V Disposition and Status	OK
V&V Charge Time	7.686

A.2 Comments

=====

This calibration observation was acquired with the focal plane temperature raised from -120C to -110C, for attempted recalibration of ACIS for the

1999-09-16 through 2000-01-28 period.

=====

This reprocessing of the data applies no CTI correction because none is available for that temperature.

=====

Focal plane temperature is warmer than -118.7 C degrees during the entire observation. This temperature is the upper limit of the verified ACIS calibration for the front-illuminated chips. The focal plane temperature is warmer than -116.7 degrees C for approximately the entire observation.

This temperature is the upper limit of the verified ACIS calibration for the back-illuminated chips. The ACIS spectral response calibration is less accurate at these warmer temperatures than it is at -119.7 C. Users whose science objectives depend on the most accurate spectral response (ie: fitting line-rich spectra) may notice an effect. Users whose science objectives do not depend on the most accurate spectral response should not notice an effect.