

V&V Reference Report

L2 ASCDS Version : 7.6.10

Observation 1774 - L2 Version 4
Chandra X-Ray Center

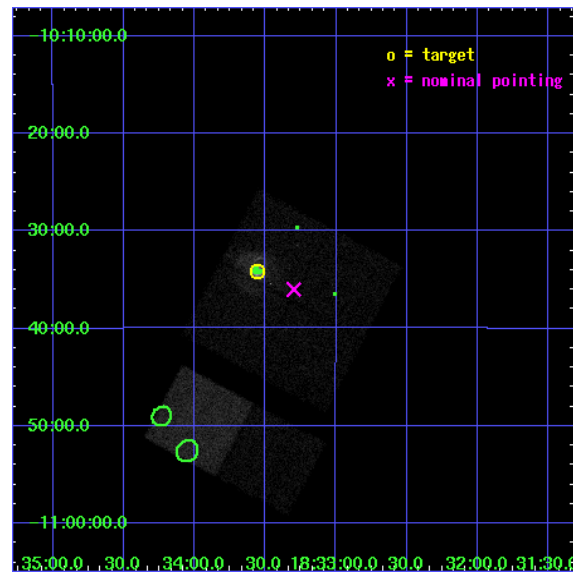
L2 Processing Date : Nov 18 2008

Contents

1	Front	2
2	OBI	3
2.1	OBI	3
2.1.1	Images	3
2.1.2	Bias	3
2.1.3	Parameters	4
2.1.4	Events	4
2.2	Compared Parameters	5
2.3	Aspect	6
2.4	Star Slots	9
2.4.1	Slot 3	9
2.4.2	Slot 4	10
2.4.3	Slot 5	11
2.4.4	Slot 6	12
2.4.5	Slot 7	13
2.5	FID Slots	14
2.5.1	Slot 0	14
2.5.2	Slot 1	15
2.5.3	Slot 2	16
3	Point Sources	17
A	Summary	18
A.1	Status	18
A.2	Comments	18

1 Front

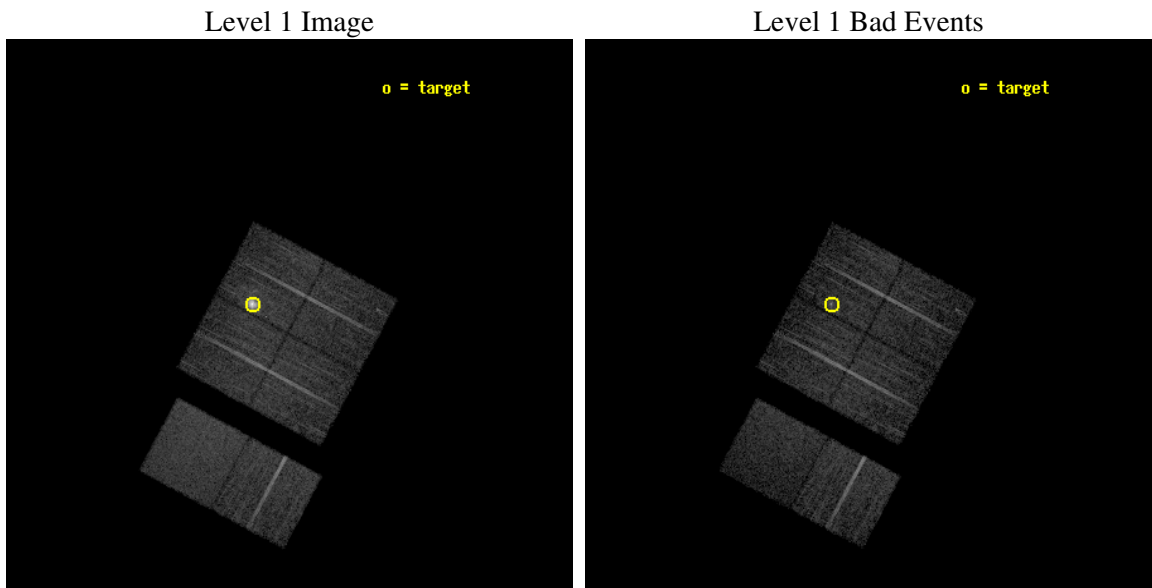
seq_num	590200
obs_id	1774
title	HRC RESPONSE TO CONTINUUM SOURCE.
observer	Dr. CXC Calibration
object	G21.5-0.9 [Chip I1, T=110, Offsets=-4,0,-1]
dtcycle	0
cycle	P
ra_targ	278.389583
dec_targ	-10.568528
ra_nom	278.32461024614
dec_nom	-10.600209981021
roll_nom	208.12099345849
revision	4
ontime	7318.4000068158
livetime	7225.7300193181
ontime0	7318.4000068158
ontime1	7318.4000068158
ontime2	7318.4000068158
ontime3	7318.4000068158
ontime6	7318.4000068158
ontime7	7318.4000068158
l2events	67248



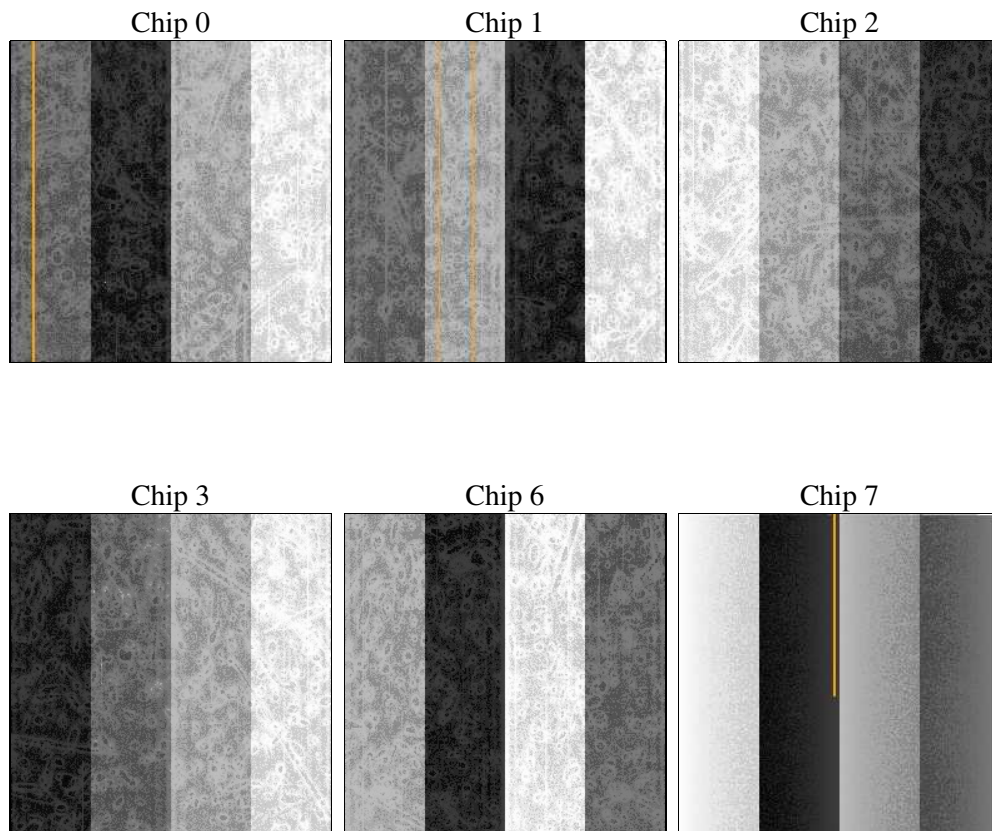
2 OBI

2.1 OBI

2.1.1 Images



2.1.2 Bias



2.1.3 Parameters

obi_num	0
ascdsver	7.6.11.9
caldsver	3.5.0
date	2008-11-18T17:51:07
revision	4

sched_exp_time	7560.000000
ontime	7318.4000068158
ontime0	7318.4000068158
ontime1	7318.4000068158
ontime2	7318.4000068158
ontime3	7318.4000068158
ontime6	7318.4000068158
ontime7	7318.4000068158
l1events	329760

2.1.4 Events

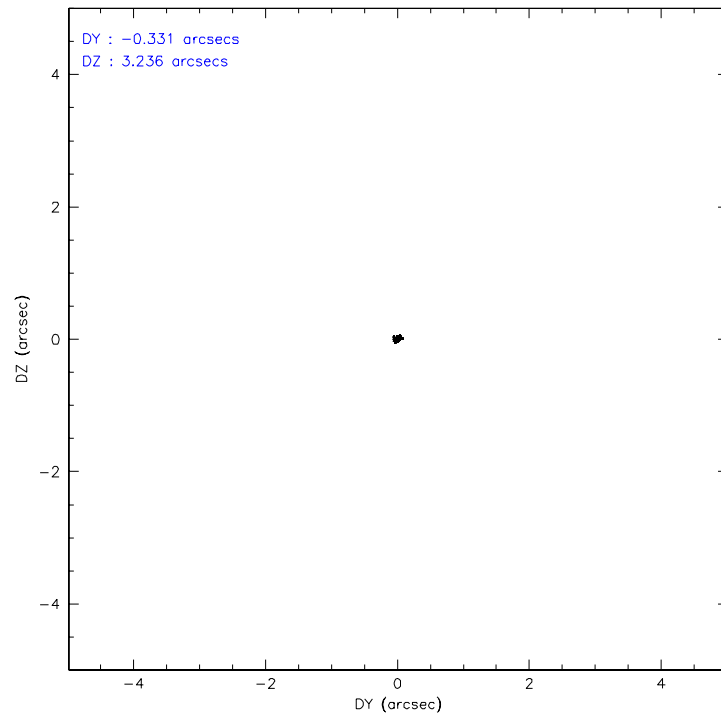
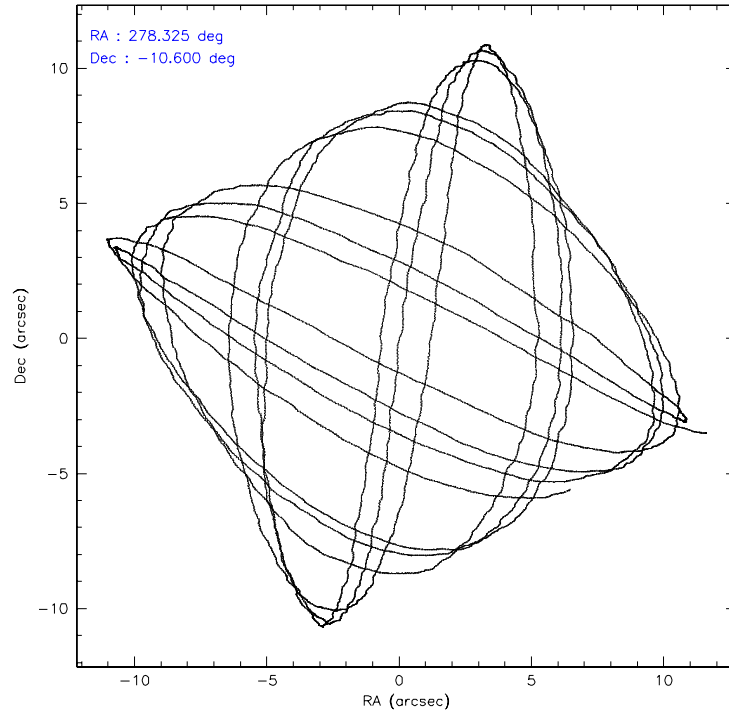
	ccd 0	ccd 1	ccd 2	ccd 3	ccd 6	ccd 7
level 1 events	45704	69973	52181	51755	53929	56218
rejected events	40283	42941	47240	45376	48648	35076
rejected %	88%	61%	90%	87%	90%	62%

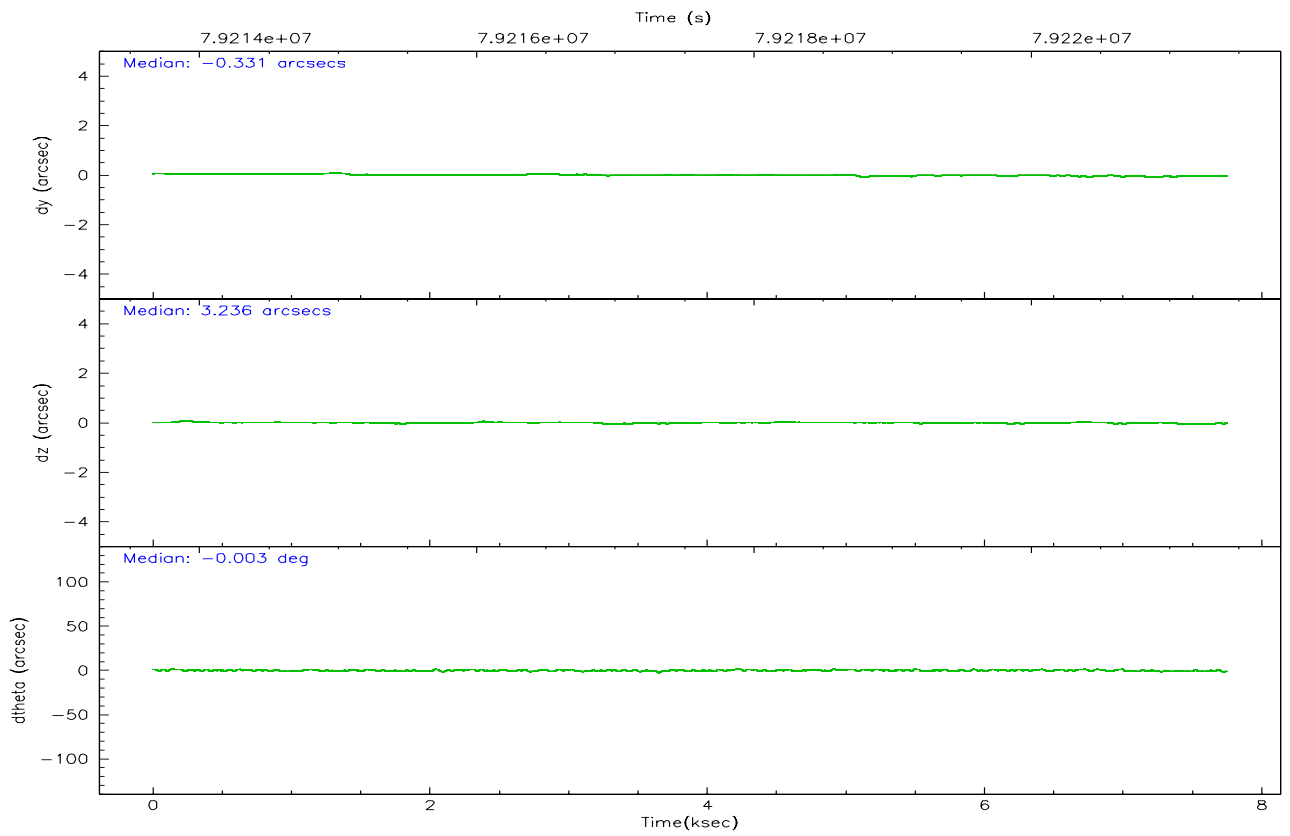
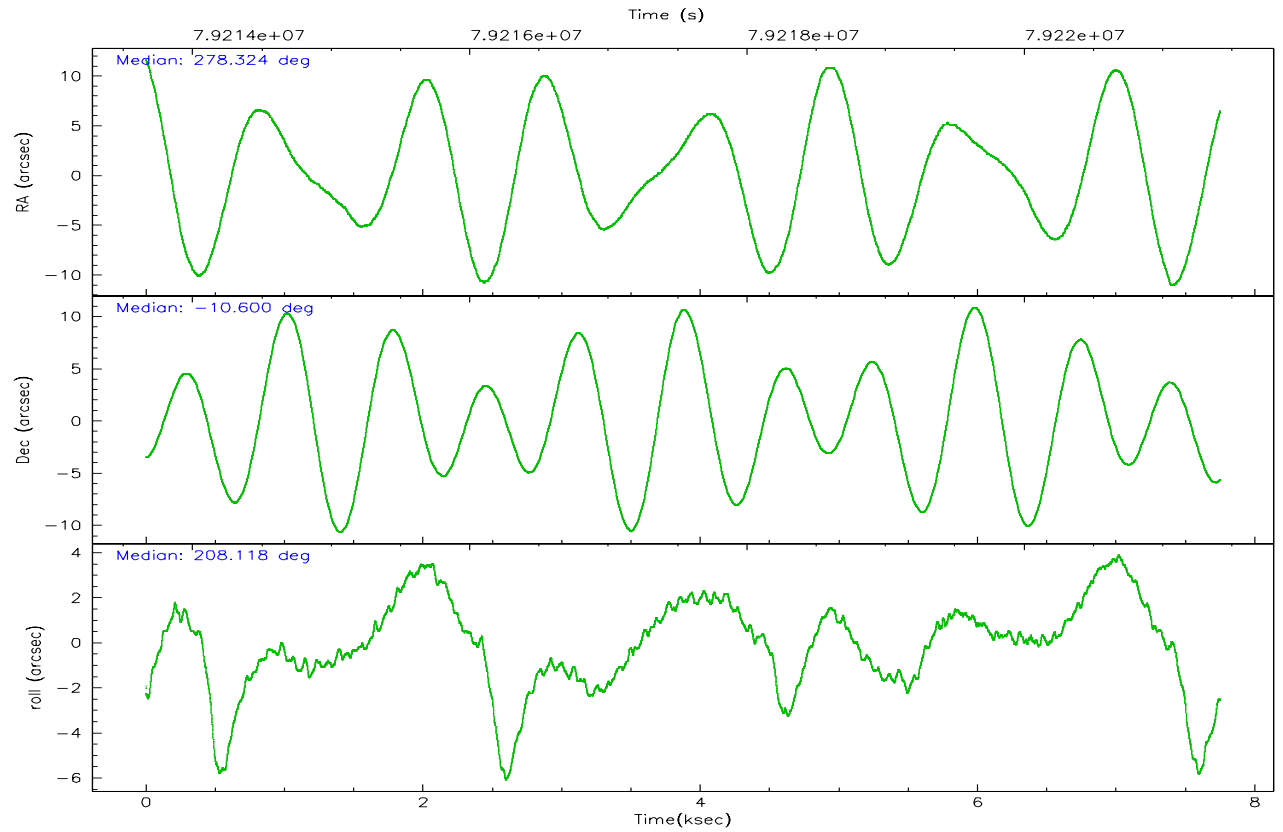
	ccd 0	ccd 1	ccd 2	ccd 3	ccd 6	ccd 7
grade 0 events	1364	14810	1135	1905	990	1223
	2%	21%	2%	3%	1%	2%
grade 1 events	9	124	10	10	9	28
	0%	0%	0%	0%	0%	0%
grade 2 events	2109	7049	1993	2375	2136	4514
	4%	10%	3%	4%	3%	8%
grade 3 events	342	1154	318	377	341	1276
	0%	1%	0%	0%	0%	2%
grade 4 events	343	1199	333	338	345	1170
	0%	1%	0%	0%	0%	2%
grade 5 events	995	1242	935	1052	1168	3302
	2%	1%	1%	2%	2%	5%
grade 6 events	1271	2842	1166	1385	1472	12968
	2%	4%	2%	2%	2%	23%
grade 7 events	39271	41553	46291	44313	47468	31737
	85%	59%	88%	85%	88%	56%

2.2 Compared Parameters

Parameter	Planned	Actual	Parameter	Planned	Actual
Instrument	ACIS	ACIS	Obspar format version number	6	6
Detector	ACIS-012367	ACIS-012367	Obspar file type	PREDICTED	ACTUAL
Grating	NONE	NONE	Obspar update status	NONE	UPDATED
Data mode	FAINT	FAINT	Number of optional ACIS chips dropped	0	0
Observation mode	POINTING	POINTING	On-chip summing requested	N	N
Pointing RA	278.339576	278.3246102461411	Subarray requested	NONE	NONE
Pointing Dec	-10.576848	-10.60020998102092	Alternating exposures requested	N	N
Pointing Roll	207.915043	208.1209934584898	Primary exposure time	0.000000	3.2
SIM focus pos (mm)	-0.782348	-0.7809083437167272			
SIM defocus (mm)	0	0.001439871863259334			
SIM translation stage pos (mm)	-238.277263	-238.2741181829365			
SIM translation stage offset (mm)	4.6848	4.681665180006831			
Observation start time	79213856.184000	79213479.717611			
Observation start date	2000-07-05T19:49:52	2000-07-05T19:44:39			
Observation end time	79221416.184000	79221550.055408			
Observation end date	2000-07-05T21:55:52	2000-07-05T21:59:10			
Read mode	TIMED	TIMED			

2.3 Aspect



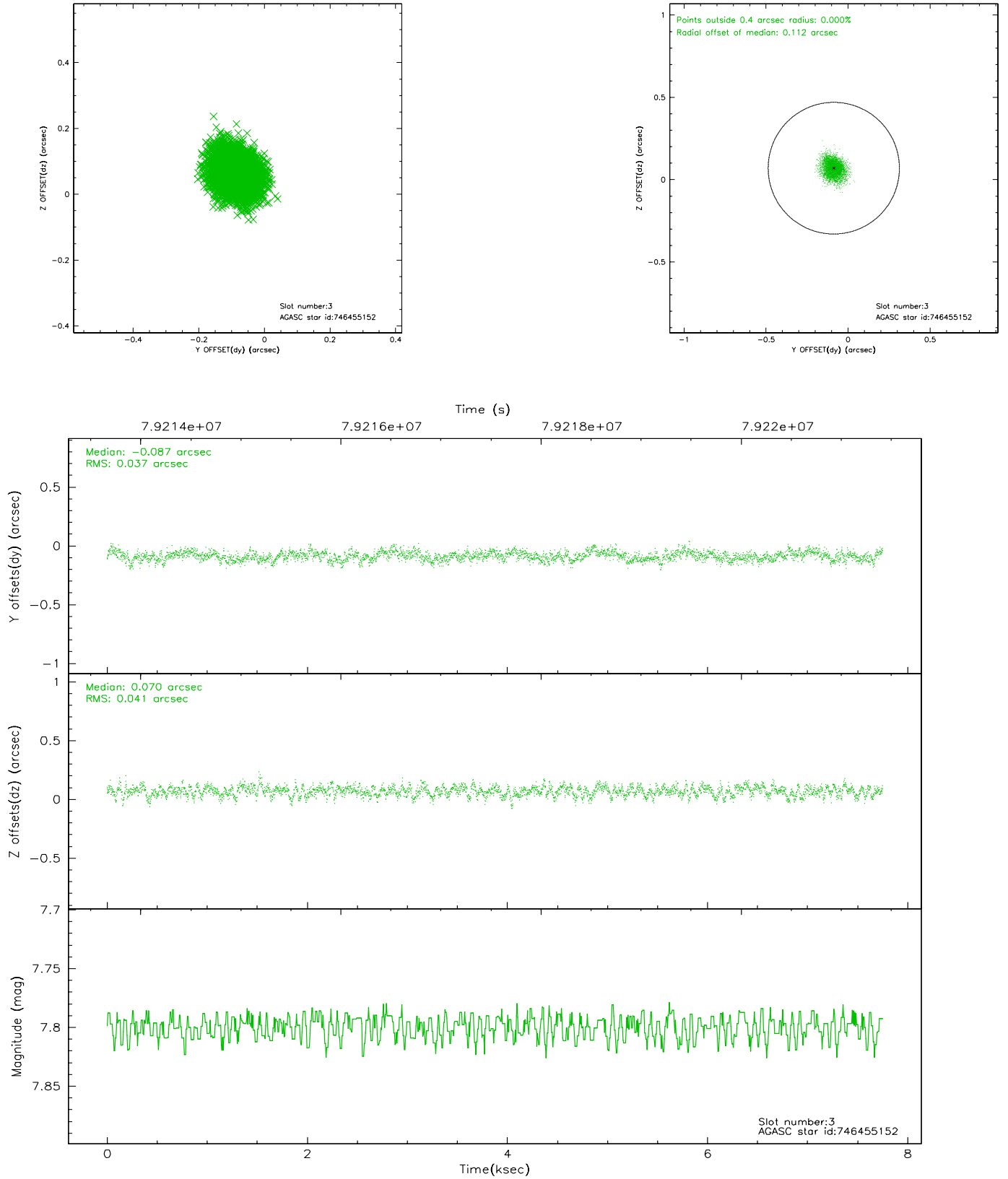


Slot Statistics

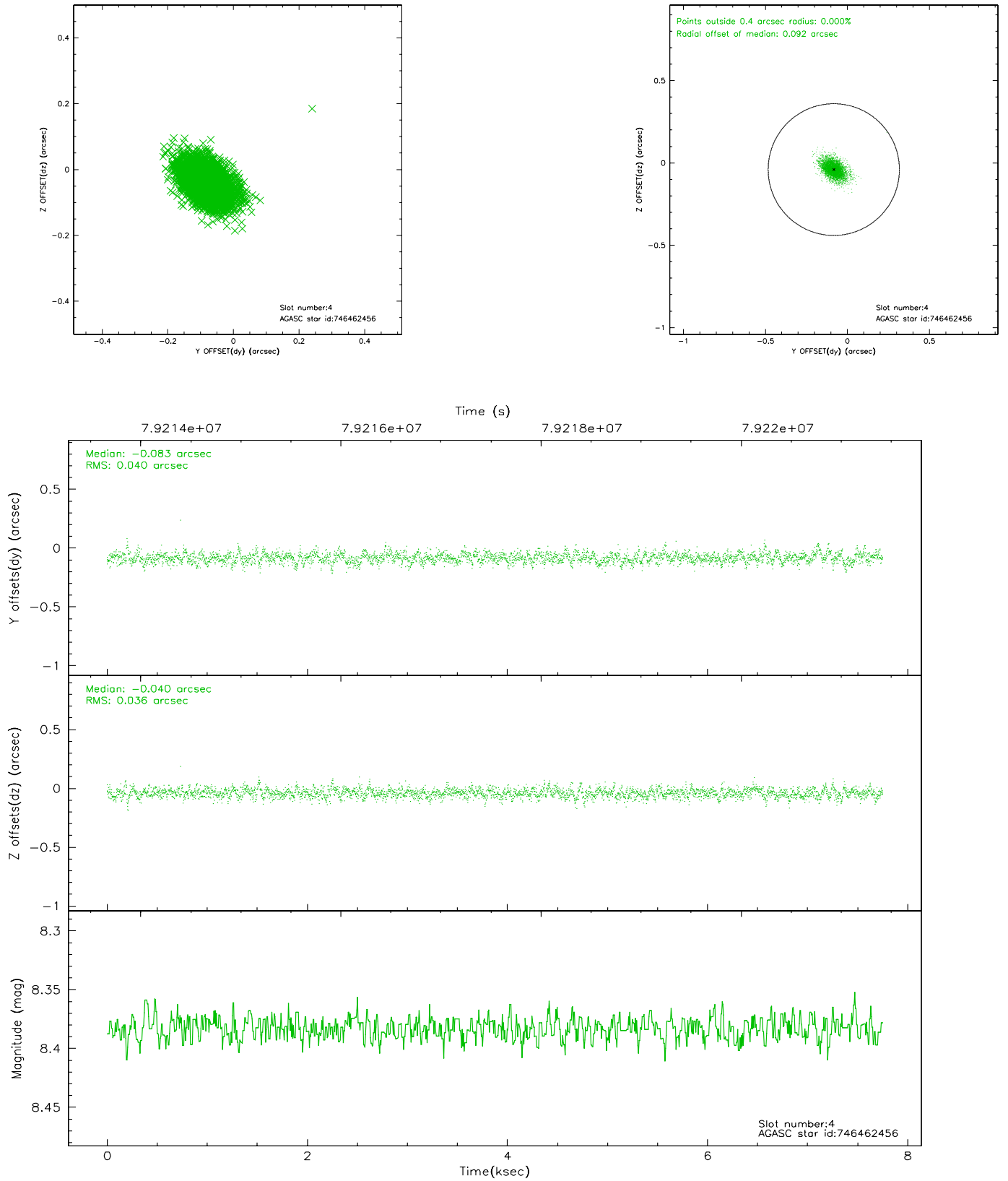
slot	status	id	mag	n_pts	med_dy	med_dz	dr1	dr2	ra	dec	mean_y	mean_z
0	FID	ACIS-I-2	7.16	1889	-0.048	-0.049	0.011	0.017	0.000000	0.000000	-753.66	-737.31
1	FID	ACIS-I-4	7.20	1889	-0.059	0.047	0.007	0.012	0.000000	0.000000	2160.04	1168.74
2	FID	ACIS-I-5	7.24	1891	0.008	0.070	0.011	0.018	0.000000	0.000000	-1806.77	1167.95
3	GUIDE	746455152	7.80	3781	-0.087	0.070	0.058	0.095	278.447893	-9.976732	-1351.01	-1728.42
4	GUIDE	746462456	8.38	3781	-0.083	-0.040	0.055	0.098	278.652171	-10.530173	-1056.71	370.29
5	GUIDE	746455112	8.93	3777	0.219	-0.111	0.071	0.119	278.266531	-10.703234	441.02	281.90
6	GUIDE	746460328	9.80	3781	0.036	0.025	0.094	0.153	278.603974	-9.898096	-1972.35	-1719.09
7	GUIDE	746995400	9.51	3778	-0.085	0.060	0.086	0.142	278.078957	-11.289885	2014.10	1838.40

2.4 Star Slots

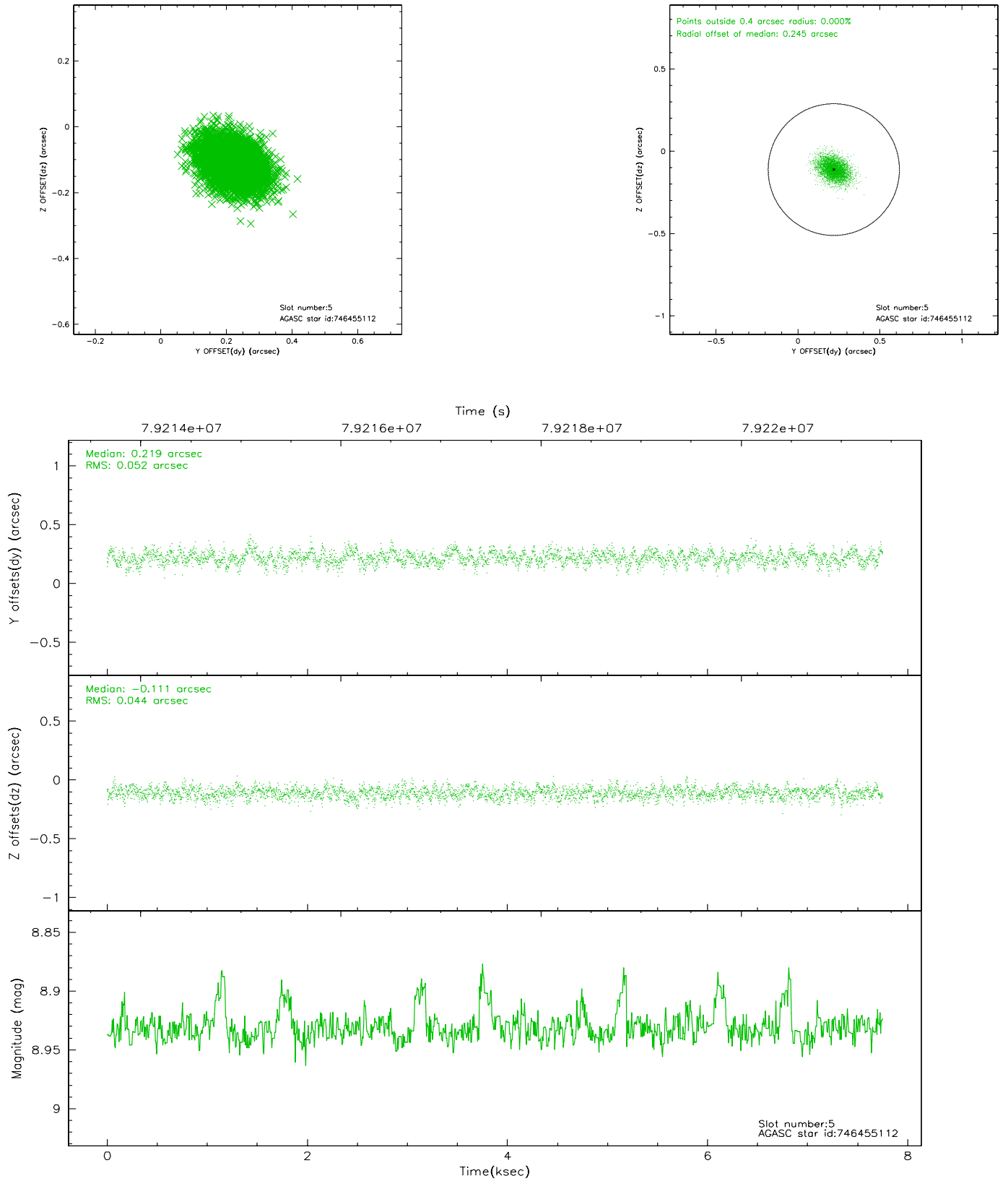
2.4.1 Slot 3



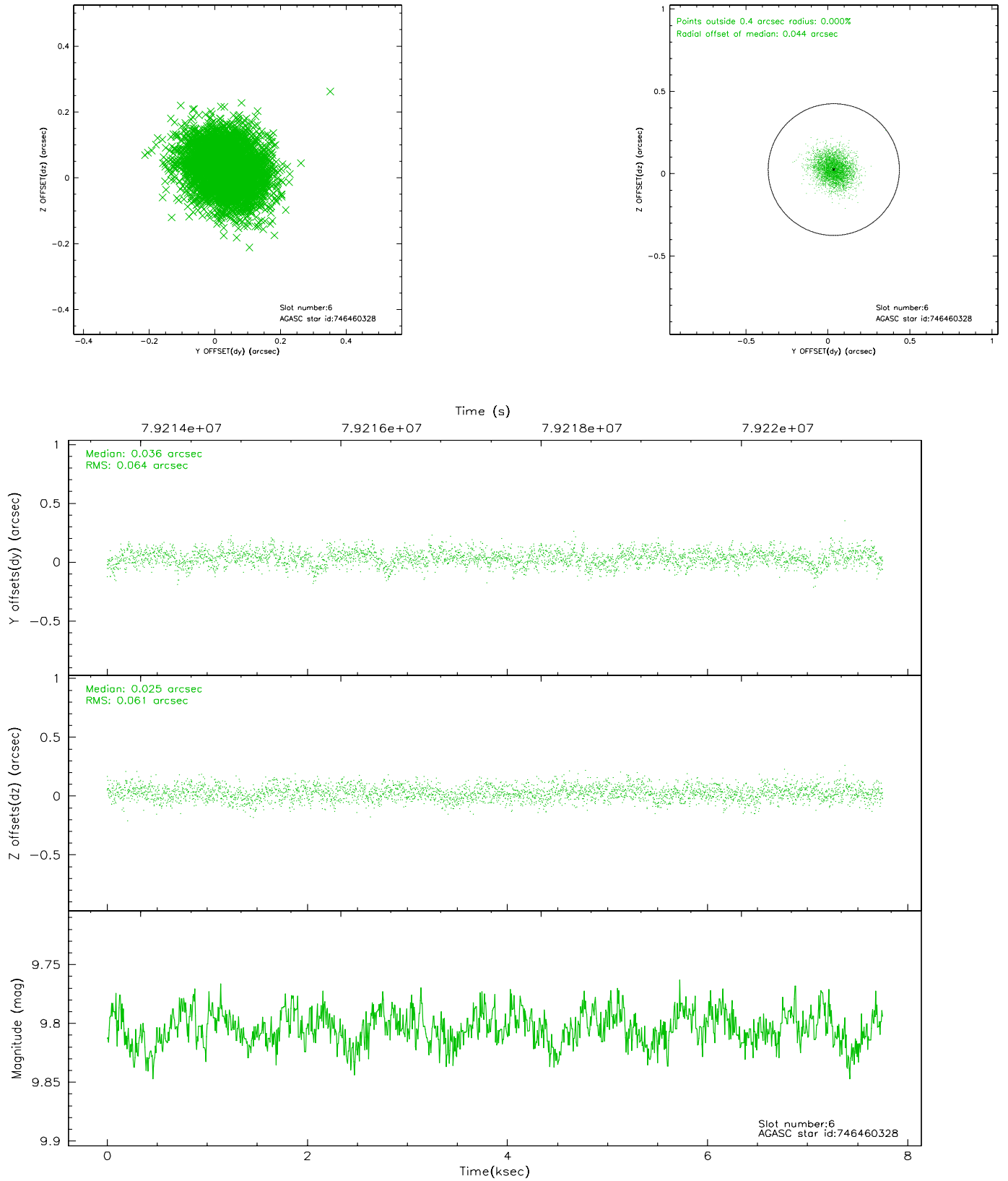
2.4.2 Slot 4



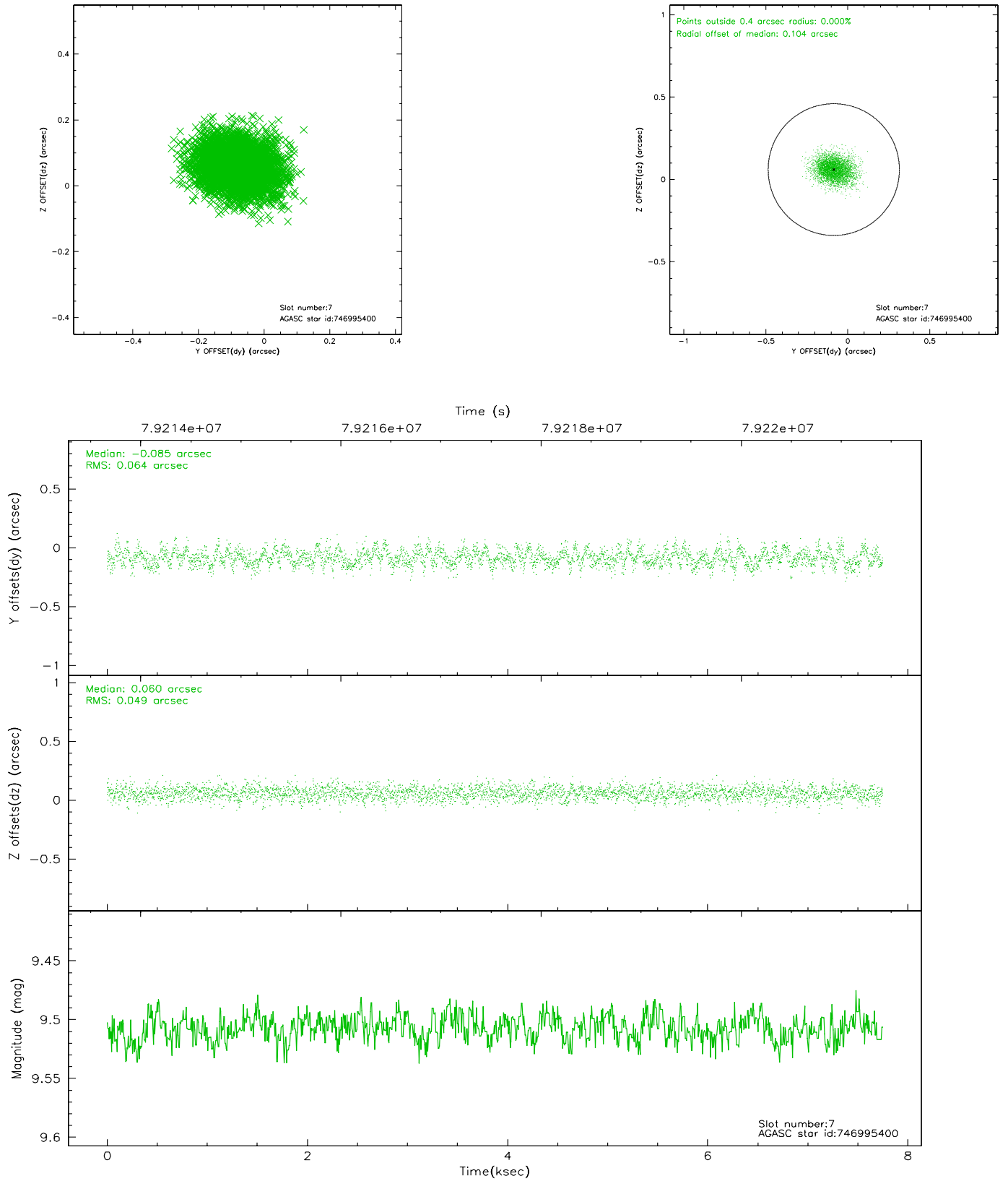
2.4.3 Slot 5



2.4.4 Slot 6

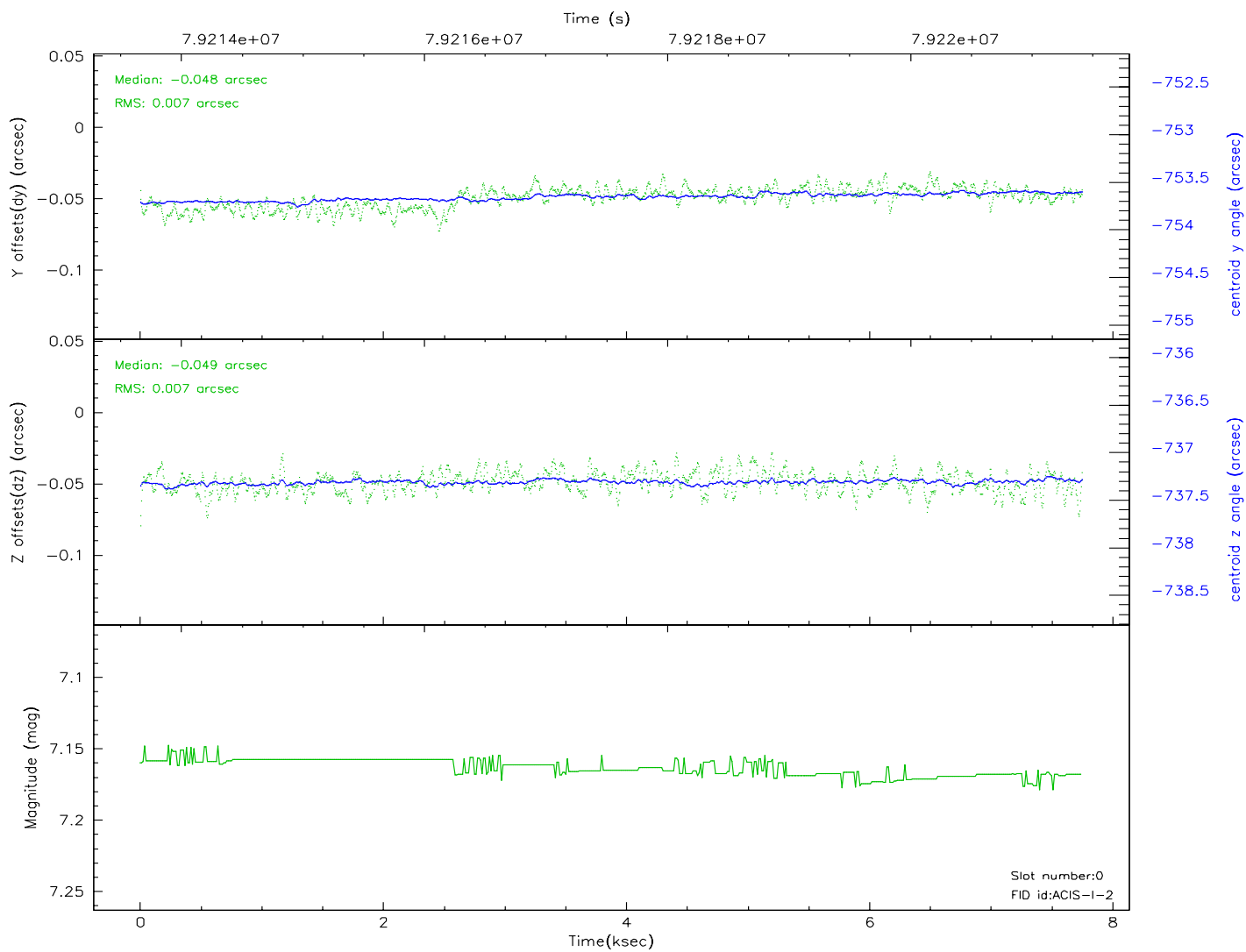
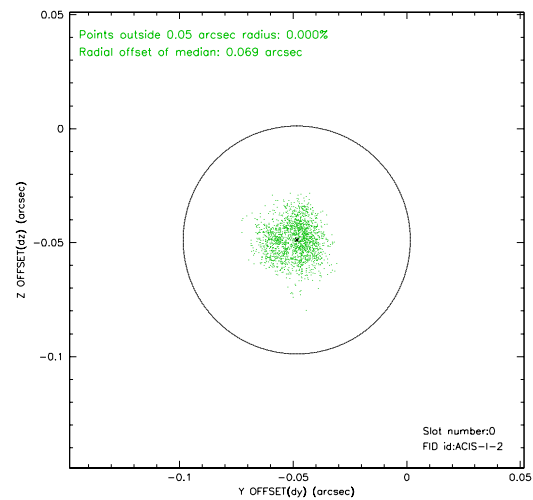
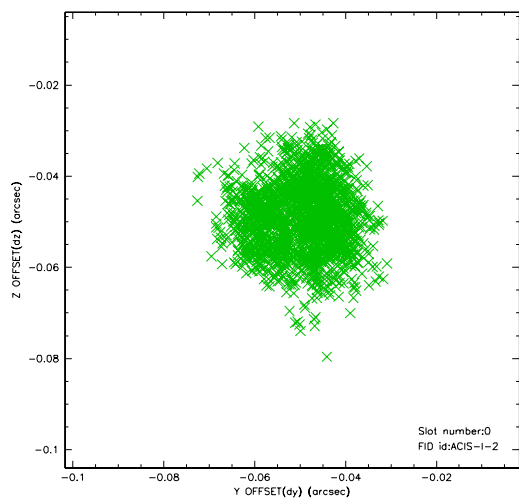


2.4.5 Slot 7

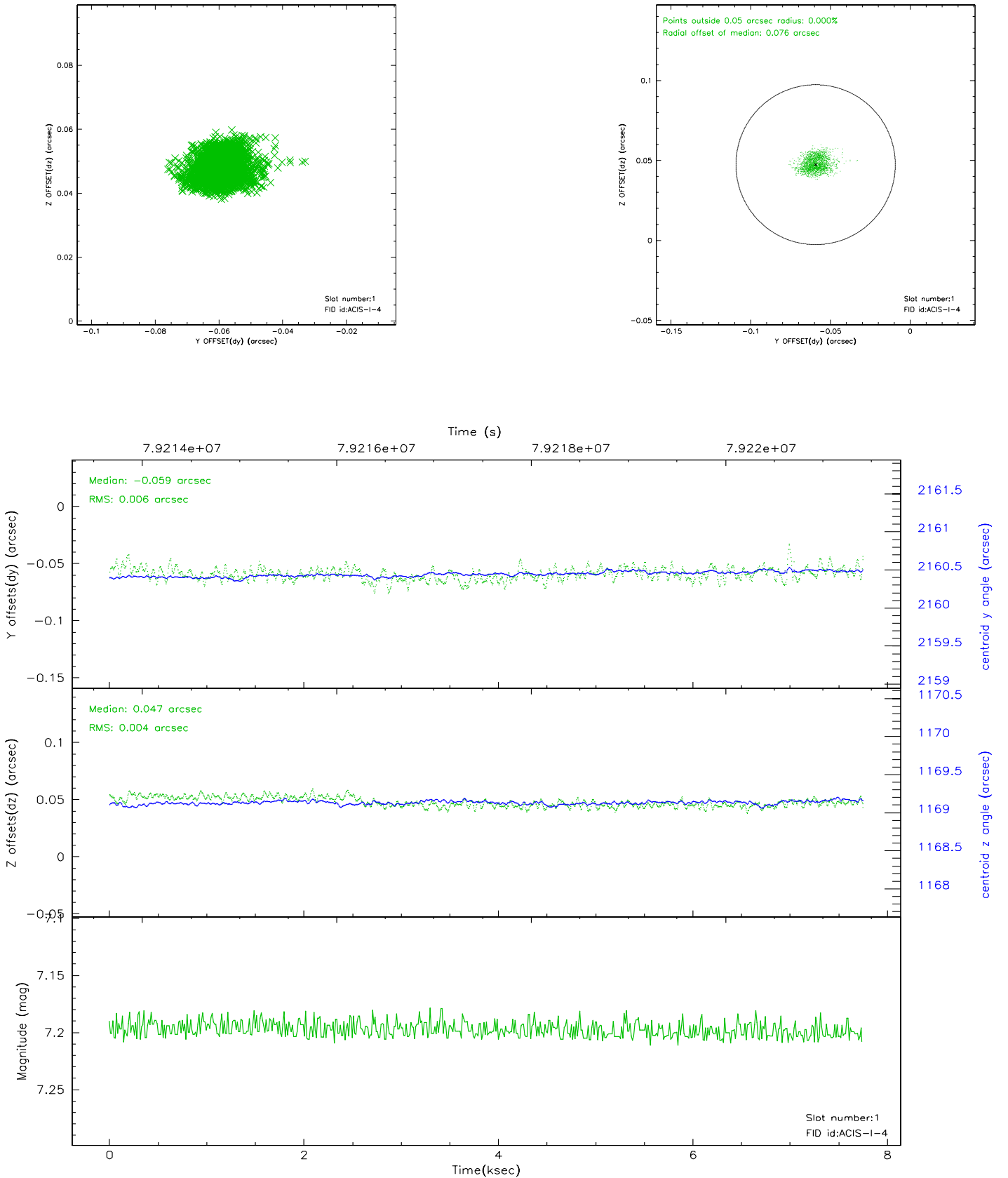


2.5 FID Slots

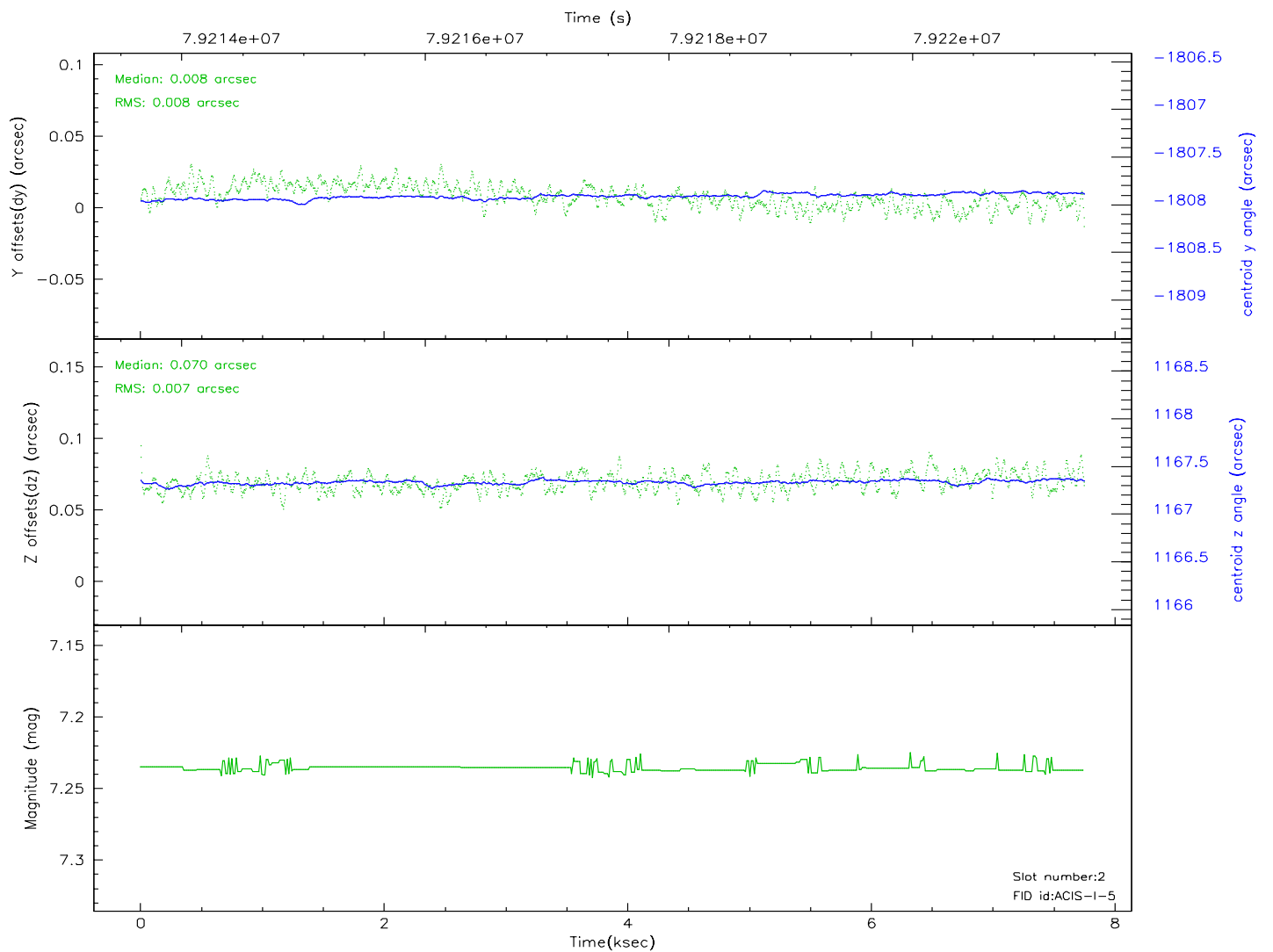
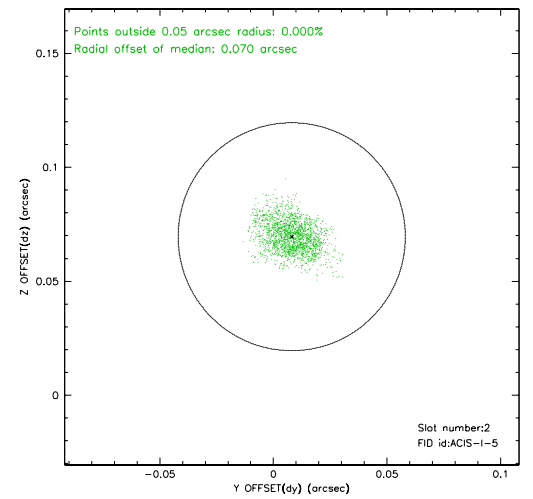
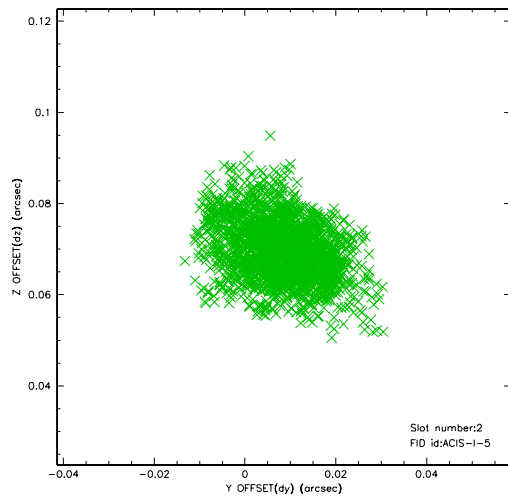
2.5.1 Slot 0



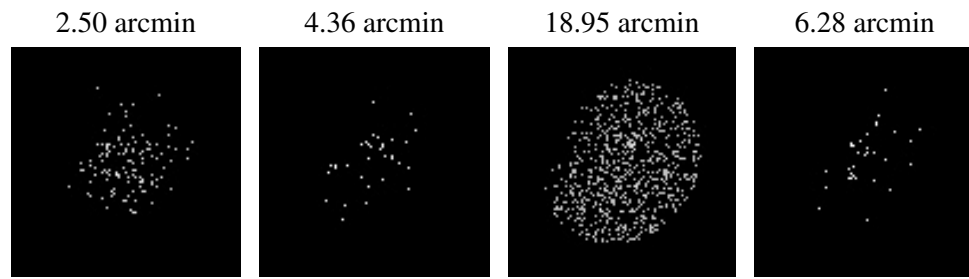
2.5.2 Slot 1



2.5.3 Slot 2



3 Point Sources



A Summary

A.1 Status

V&V Scientist	Joy Nichols
V&V Date (YYYY-MM-DD)	2008.11.20
V&V Edition	2
V&V Disposition and Status	OK
V&V Charge Time	7.321

A.2 Comments

This calibration observation was acquired with the focal plane temperature raised from -120C to -110C, for attempted recalibration of ACIS for the

1999-09-16 through 2000-01-28 period.

=====

This reprocessing of the data applies no CTI correction because none is available for that temperature.

=====

Focal plane temperature is warmer than -118.7 C degrees during the entire observation. This temperature is the upper limit of the verified ACIS calibration for the front-illuminated chips. The focal plane temperature is warmer than -116.7 degrees C for approximately the entire observation.

This temperature is the upper limit of the verified ACIS calibration for the back-illuminated chips. The ACIS spectral response calibration is less accurate at these warmer temperatures than it is at -119.7 C. Users whose science objectives depend on the most accurate spectral response (ie: fitting line-rich spectra) may notice an effect. Users whose science objectives do not depend on the most accurate spectral response should not notice an effect.