

V&V Reference Report

L2 ASCDS Version : 8.4.5

Observation 1769 - L2 Version 5
Chandra X-Ray Center

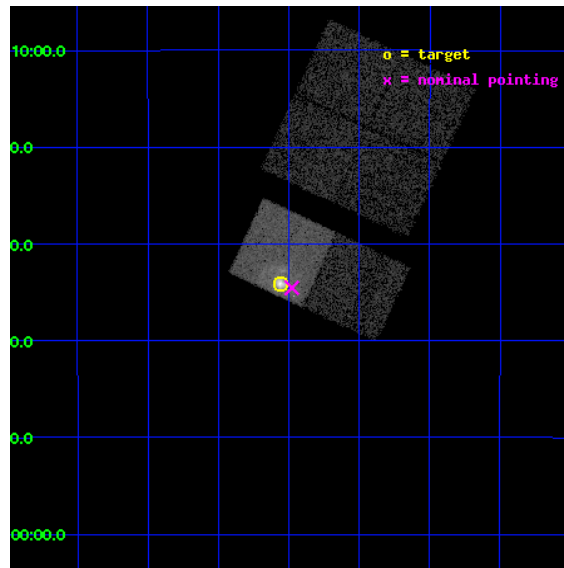
L2 Processing Date : Aug 30 2012

Contents

1	Front	2
2	OBI	3
2.1	OBI	3
2.1.1	Images	3
2.1.2	Bias	3
2.1.3	Parameters	4
2.1.4	Events	4
2.2	Compared Parameters	5
2.3	Aspect	6
2.4	Star Slots	9
2.4.1	Slot 3	9
2.4.2	Slot 4	10
2.4.3	Slot 5	11
2.4.4	Slot 6	12
2.4.5	Slot 7	13
2.5	FID Slots	14
2.5.1	Slot 0	14
2.5.2	Slot 1	15
2.5.3	Slot 2	16
A	Summary	17
A.1	Status	17
A.2	Comments	17

1 Front

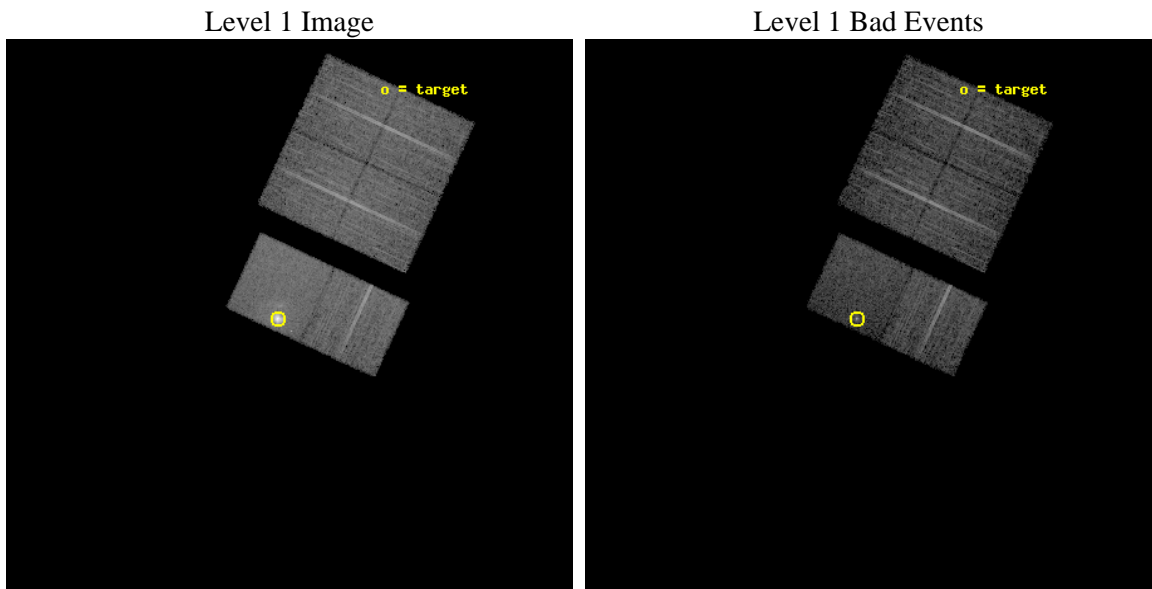
seq_num	590195	Sequence number
obs_id	1769	Observation id
title	HRC RESPONSE TO CONTINUUM SOURCE.	Proposal title
observer	Dr. CXC Calibration	Principal investigator
object	G21.5-0.9 [Chip S3, T=110, Offsets=-1,0,3]	Source name
dtcycle	0	
cycle	P	events from which exps? Prim/Second/Both
ra_targ	278.389583	Observer's specified target RA [deg]
dec_targ	-10.568528	Observer's specified target Dec [deg]
ra_nom	278.36948913106	Nominal RA [deg]
dec_nom	-10.575726825285	Nominal Dec [deg]
roll_nom	204.91005986037	Nominal Roll [deg]
revision	5	Processing version of data
ontime	7510.4000069797	Sum of GTIs [s]
livetime	7415.2987998714	Livetime [s]
ontime0	7507.1590367407	Sum of GTIs [s]
ontime1	7510.4000069797	Sum of GTIs [s]
ontime2	7510.4000069797	Sum of GTIs [s]
ontime3	7510.4000069797	Sum of GTIs [s]
ontime6	7510.4000069797	Sum of GTIs [s]
ontime7	7510.4000069797	Sum of GTIs [s]
l2events	73143	Number of level 2 events



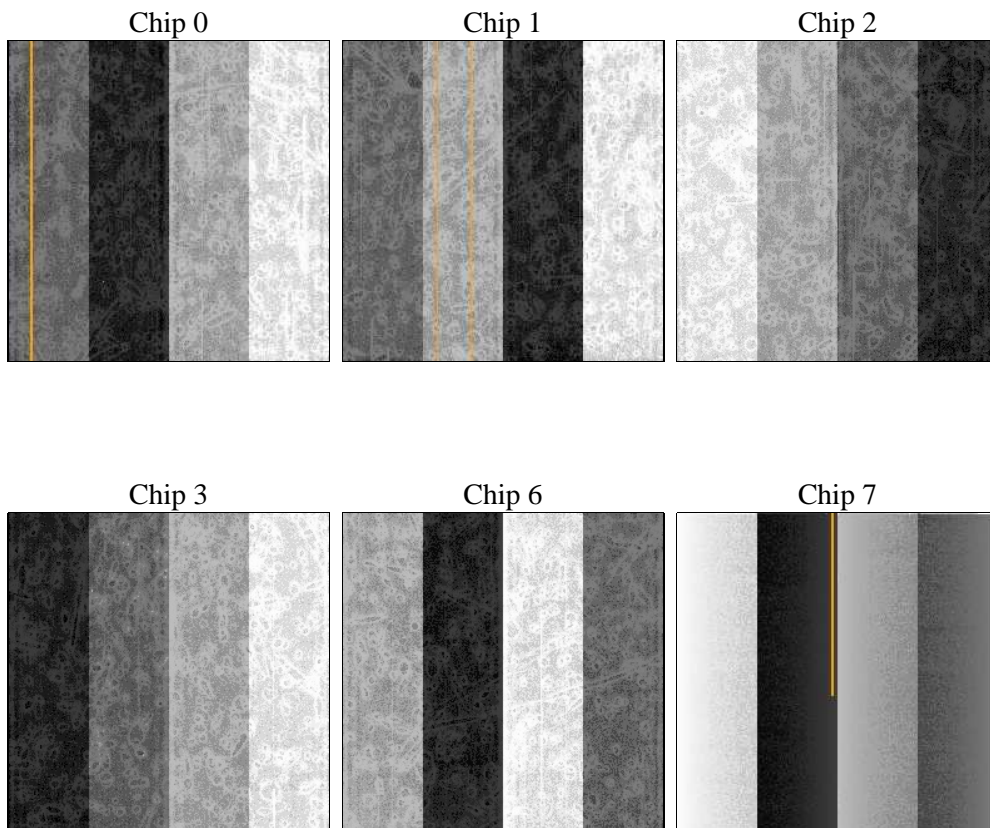
2 OBI

2.1 OBI

2.1.1 Images



2.1.2 Bias



2.1.3 Parameters

obi_num	0	Obi number	sched_exp_time	7560.000000	[s] Scheduled observation exposure time
ascdsver	8.4.5	Processing system revision	ontime	7510.4000069797	Sum of GTIs [s]
caldsver	4.5.1.1	 	ontime0	7507.1590367407	Sum of GTIs [s]
date	2012-08-30T03:39:38	Date and time of file creation	ontime1	7510.4000069797	Sum of GTIs [s]
revision	5	Processing version of data	ontime2	7510.4000069797	Sum of GTIs [s]
			ontime3	7510.4000069797	Sum of GTIs [s]
			ontime6	7510.4000069797	Sum of GTIs [s]
			ontime7	7510.4000069797	Sum of GTIs [s]
			l1events	343822	Number of level 1 events

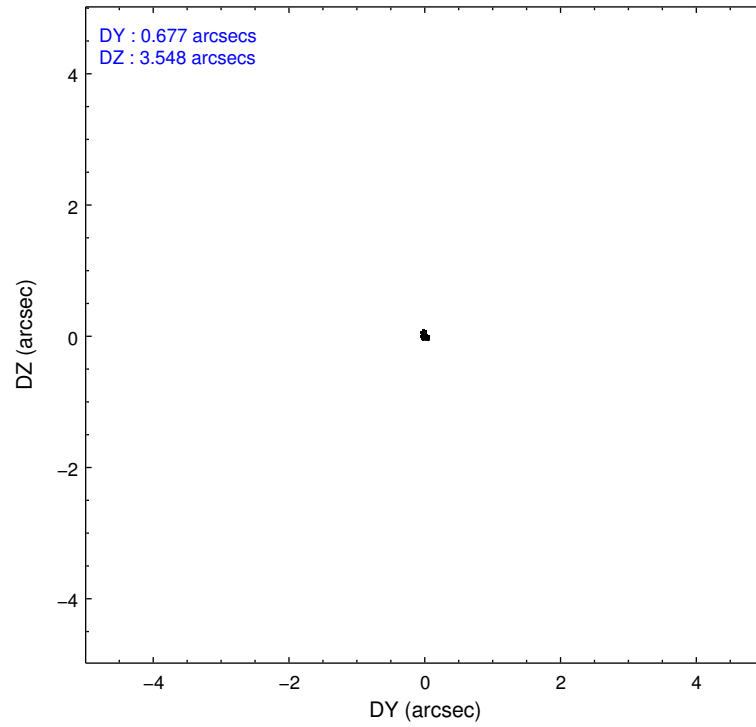
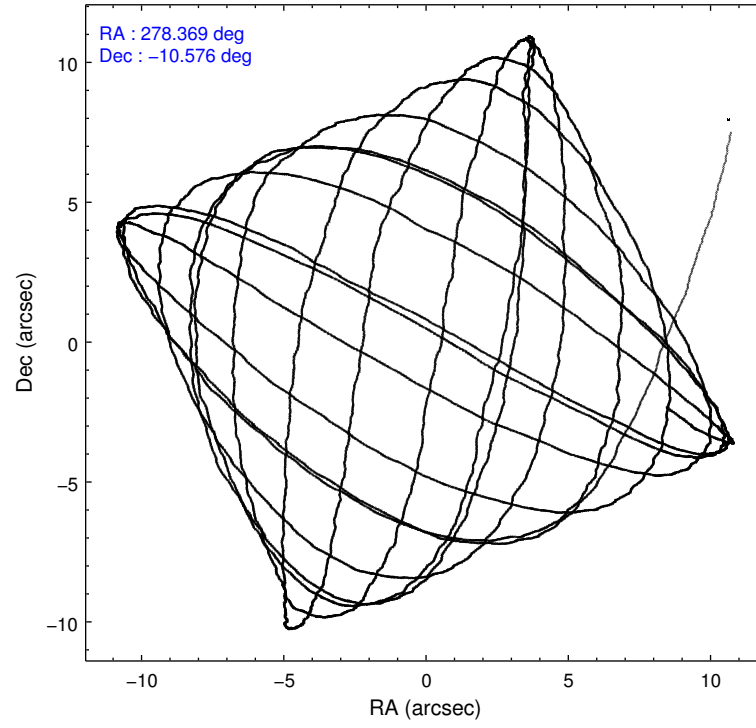
2.1.4 Events

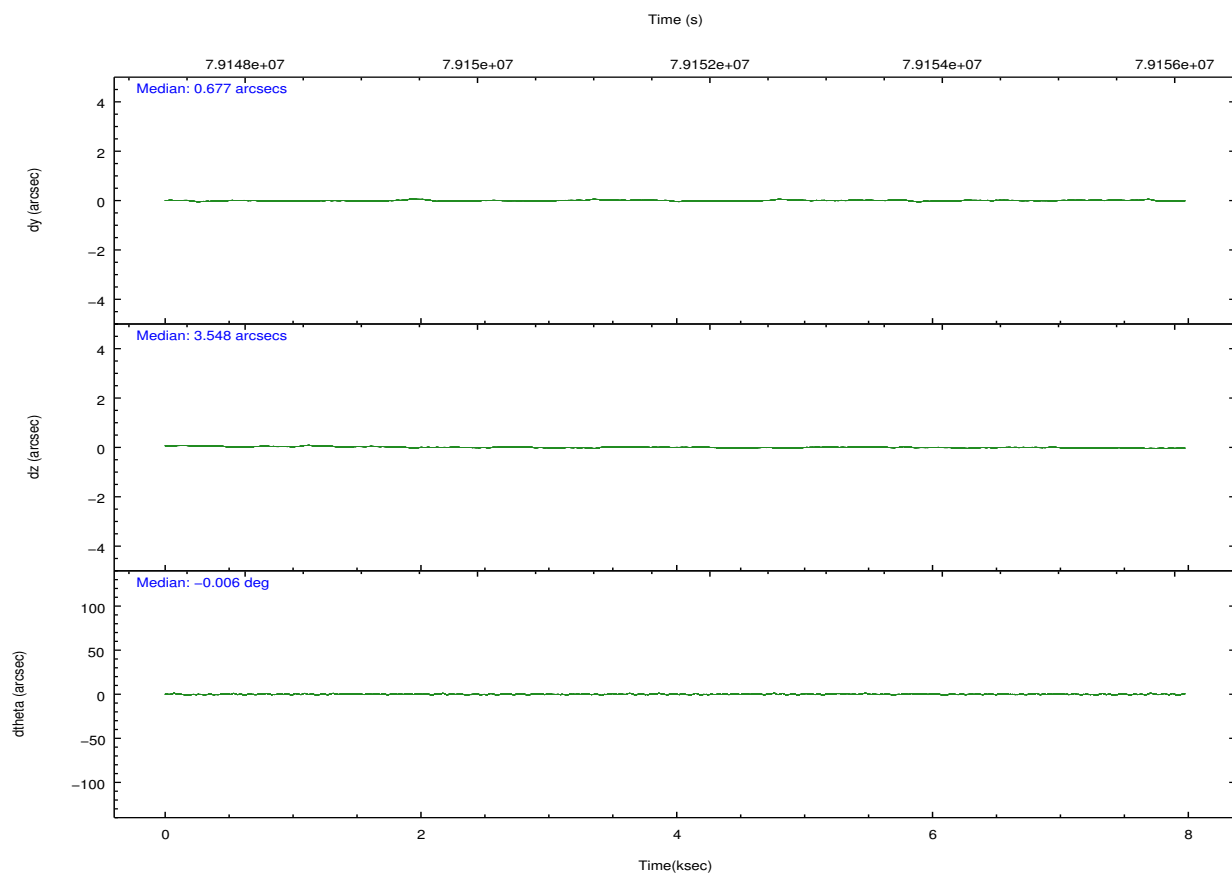
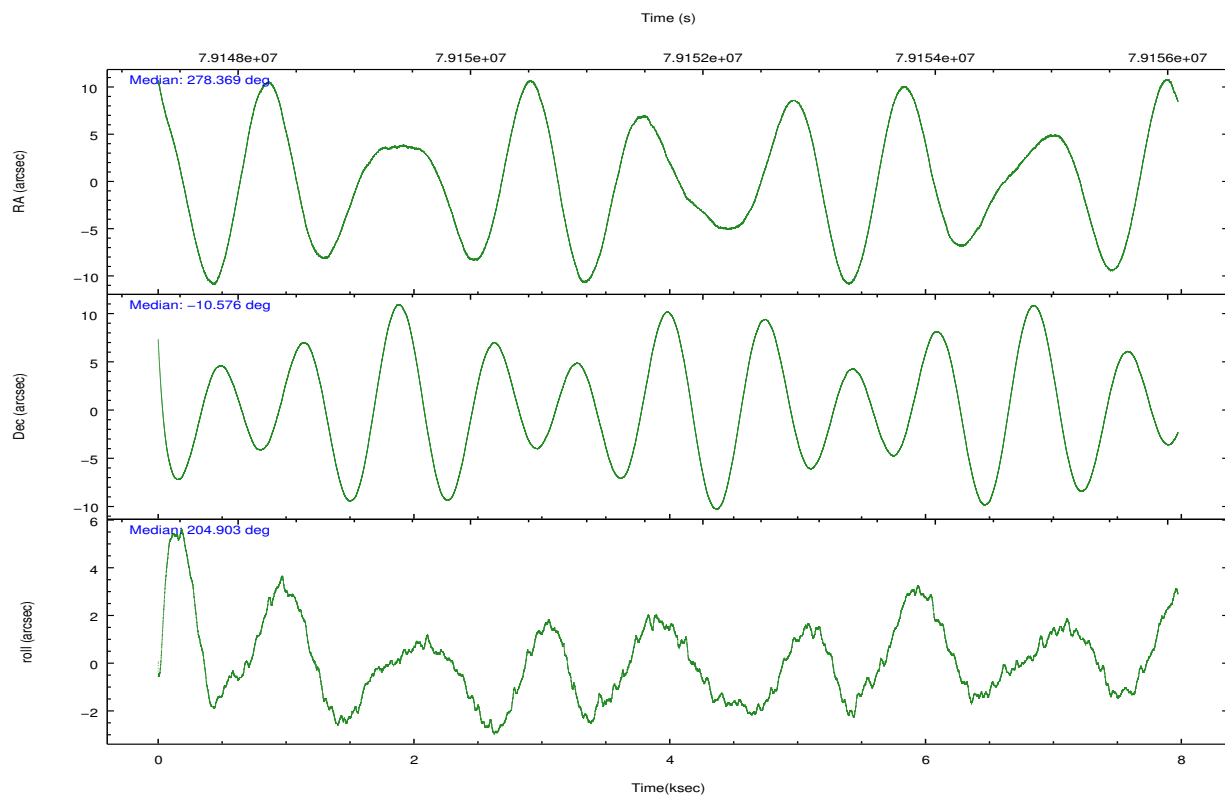
	ccd 0	ccd 1	ccd 2	ccd 3	ccd 6	ccd 7		ccd 0	ccd 1	ccd 2	ccd 3	ccd 6	ccd 7
level 1 events	49114	48833	52964	51177	55893	85841	grade 0 events	1392	1594	1091	1292	1302	6234
rejected events	43508	42774	47853	45606	50031	36342		2%	3%	2%	2%	2%	7%
rejected %	88%	87%	90%	89%	89%	42%	grade 1 events	11	17	4	14	8	74
								0%	0%	0%	0%	0%	0%
							grade 2 events	2129	2165	2068	2240	2312	11391
								4%	4%	3%	4%	4%	13%
							grade 3 events	425	430	332	339	339	4556
								0%	0%	0%	0%	0%	5%
							grade 4 events	372	435	334	331	337	4062
								0%	0%	0%	0%	0%	4%
							grade 5 events	1059	1127	933	1072	1187	3897
								2%	2%	1%	2%	2%	4%
							grade 6 events	1293	1436	1290	1372	1573	23283
								2%	2%	2%	2%	2%	27%
							grade 7 events	42433	41629	46912	44517	48835	32344
								86%	85%	88%	86%	87%	37%

2.2 Compared Parameters

Parameter	Planned	Actual	Parameter	Planned	Actual
Instrument	ACIS	ACIS	Obspar format version number	7	7
Detector	ACIS-012367	ACIS-012367	Obspar file type	PREDICTED	ACTUAL
Grating	NONE	NONE	Obspar update status	NONE	UPDATED
Data mode	FAINT	FAINT	Number of optional ACIS chips dropped	0	0
Observation mode	POINTING	POINTING	On-chip summing requested	N	N
[deg] Pointing RA	278.385369	278.3694891310648	Subarray requested	NONE	NONE
[deg] Pointing Dec	-10.553184	-10.57572682528511	Alternating exposures requested	N	N
[deg] Pointing Roll	204.756347	204.910059860372	[s] Primary exposure time	0.000000	3.2
[mm] SIM focus pos	-0.684267	-0.6828225247311905			
[mm] SIM defocus	0	0.001444936568705701			
[mm] SIM translation stage pos	-181.348523	-181.3550483862213			
[mm] SIM translation stage offset	-8.784000000000001	-8.777474196786557			
[s] Observation start time (MET)	79148126.184000	79147054.59016301			
Observation start date	2000-07-05T01:34:22	2000-07-05T01:17:34			
[s] Observation end time (MET)	79155686.184000	79155819.877986			
Observation end date	2000-07-05T03:40:22	2000-07-05T03:43:39			
Read mode	TIMED	TIMED			

2.3 Aspect



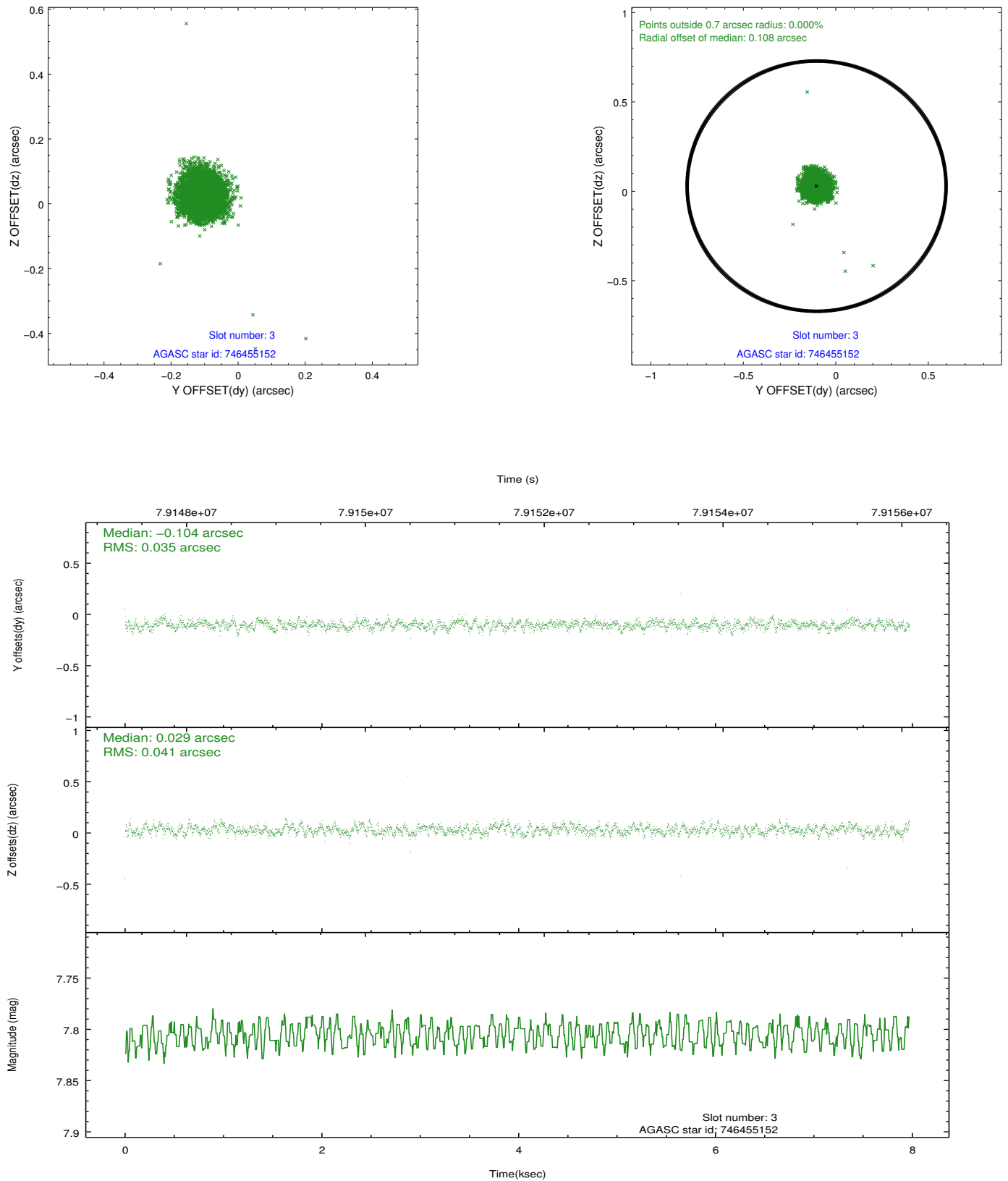


Slot Statistics

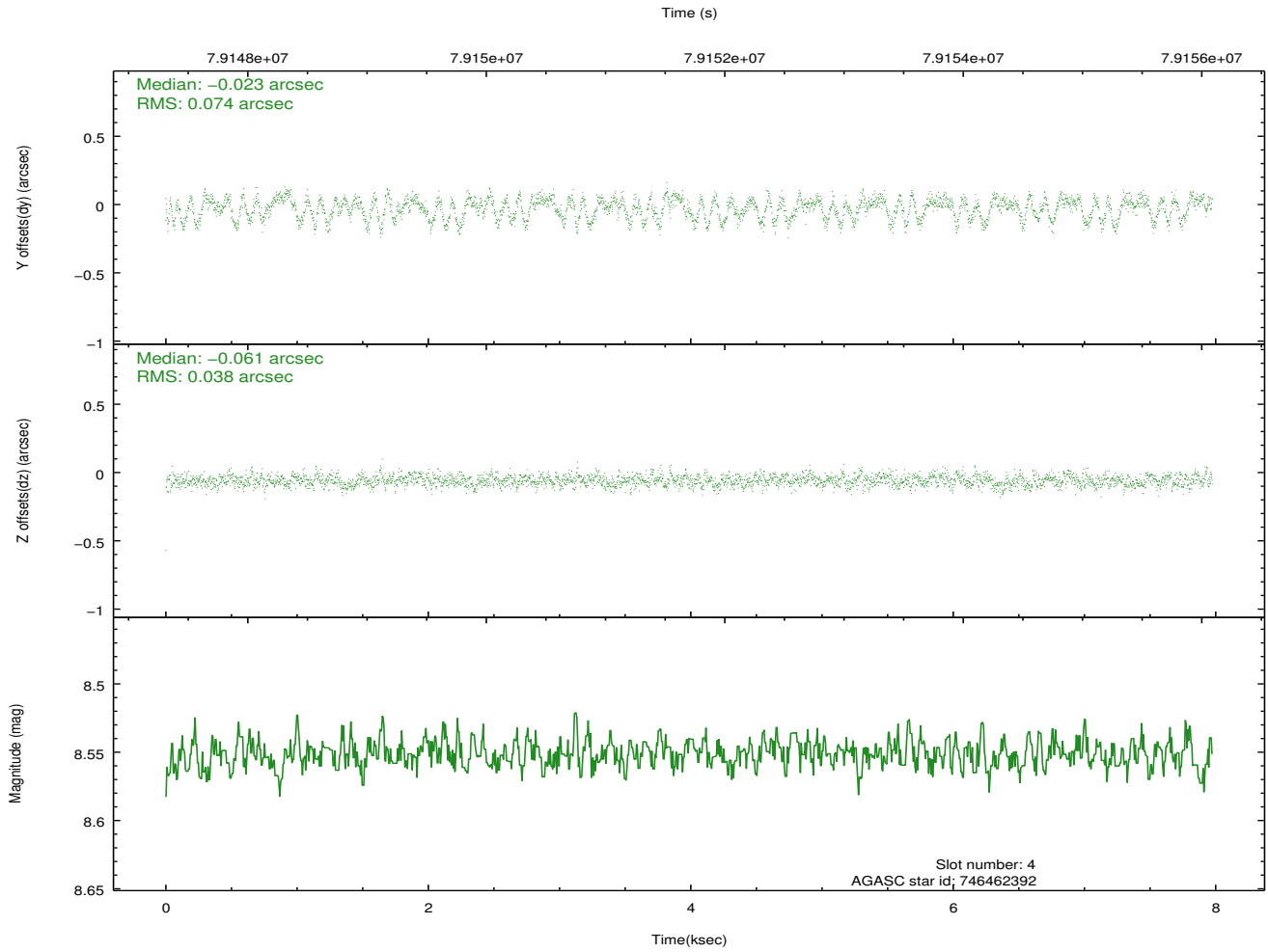
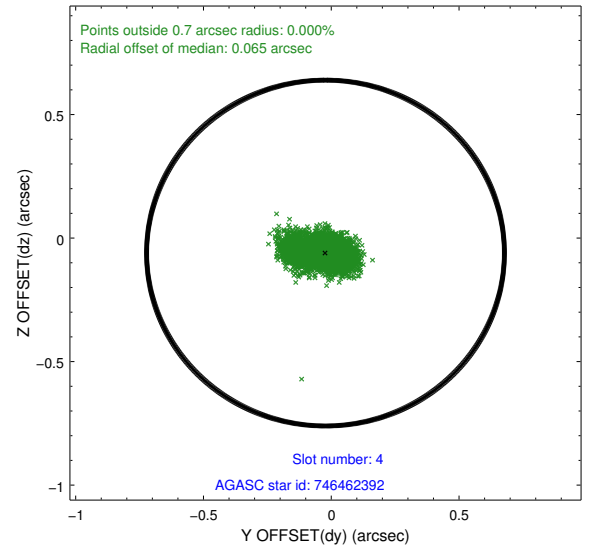
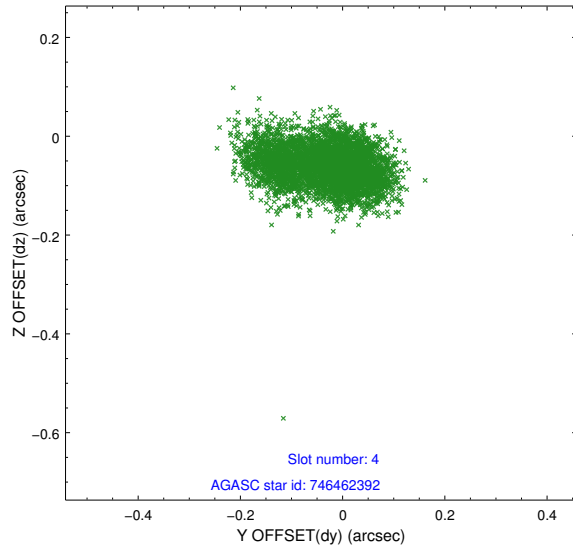
slot	status	id	mag	n_pts	med_dy	med_dz	dr1	dr2	ra	dec	mean_y	mean_z
0	FID	ACIS-S-1	7.20	1945	0.016	0.077	0.006	0.011	0.000000	0.000000	943.47	-1900.95
1	FID	ACIS-S-5	7.23	1944	-0.087	0.024	0.006	0.010	0.000000	0.000000	-1805.26	-4.32
2	FID	ACIS-S-6	7.43	1945	0.050	-0.090	0.007	0.010	0.000000	0.000000	408.26	640.36
3	GUIDE	746455152	7.81	3891	-0.104	0.029	0.056	0.087	278.447893	-9.976732	-1070.53	-1791.69
4	GUIDE	746462392	8.55	3891	-0.023	-0.061	0.087	0.147	279.038421	-10.890715	-1587.54	2071.94
5	GUIDE	746455112	8.93	3889	0.209	-0.085	0.068	0.114	278.266531	-10.703234	607.42	315.17
6	GUIDE	746460328	9.81	3881	-0.030	0.027	0.089	0.144	278.603974	-9.898096	-1691.45	-1816.70
7	GUIDE	746995400	9.72	3887	-0.045	0.088	0.105	0.172	278.078957	-11.289885	2092.24	1955.89

2.4 Star Slots

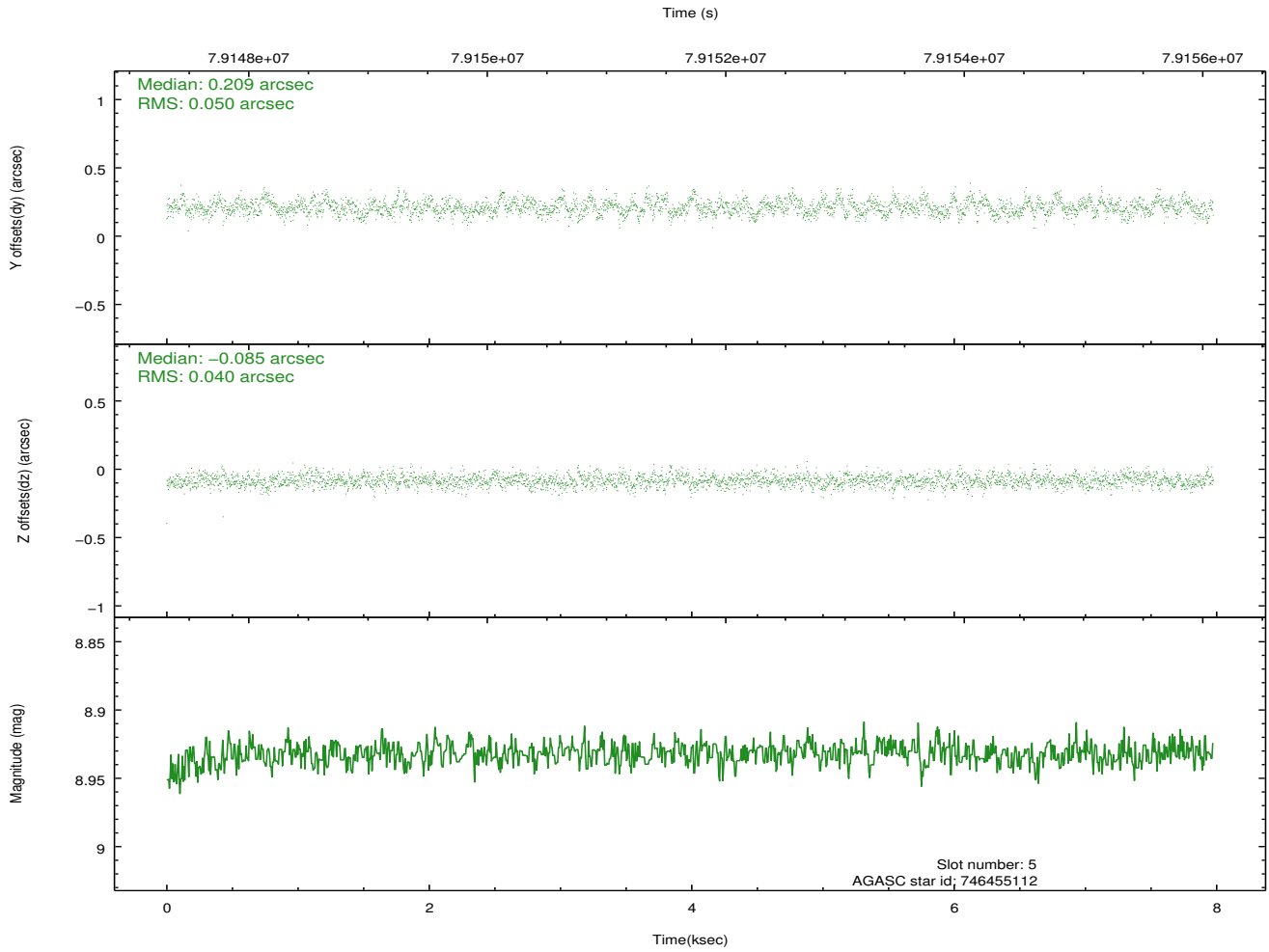
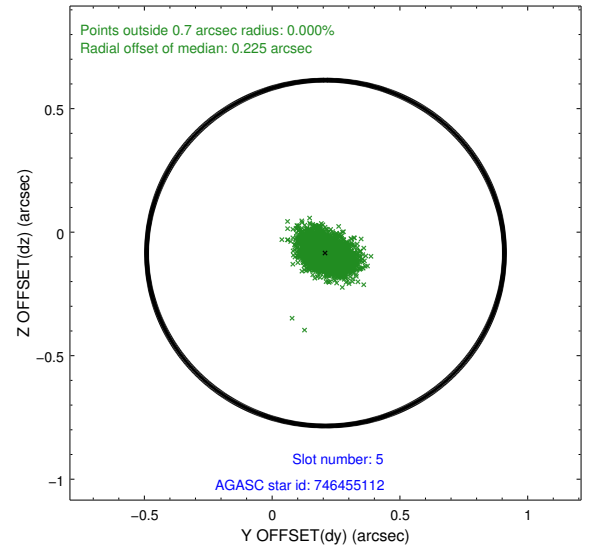
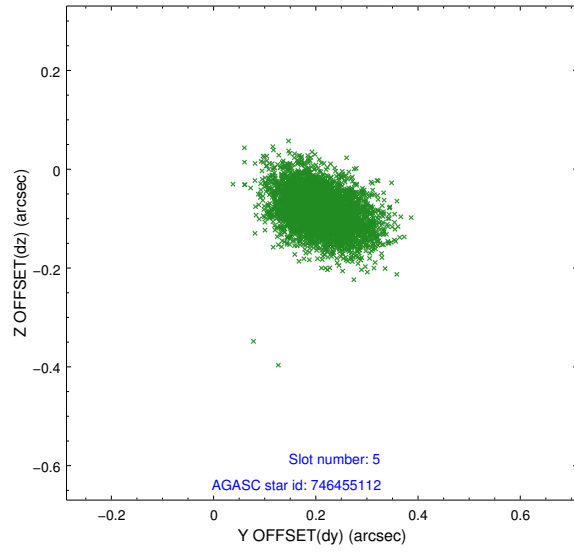
2.4.1 Slot 3



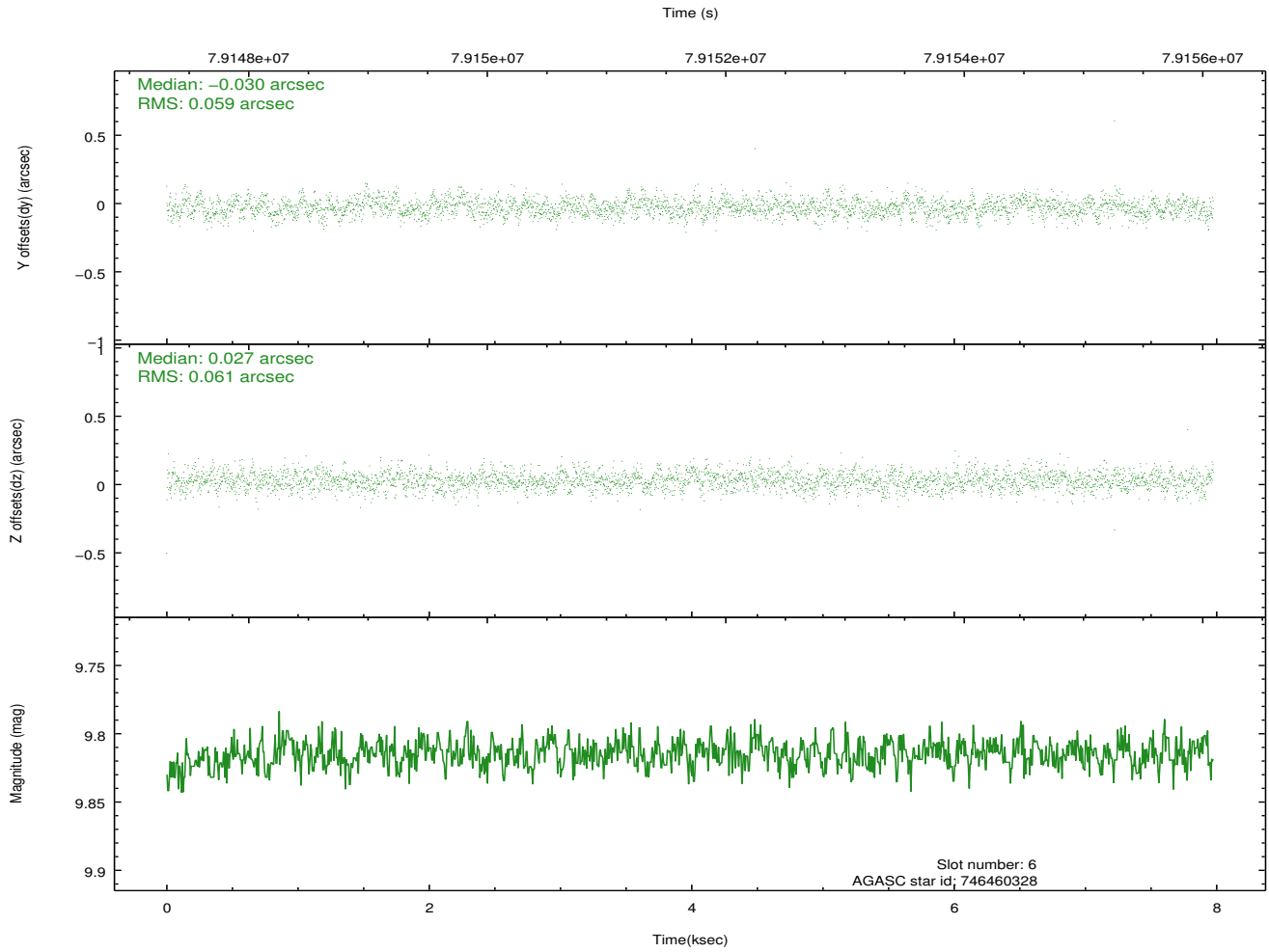
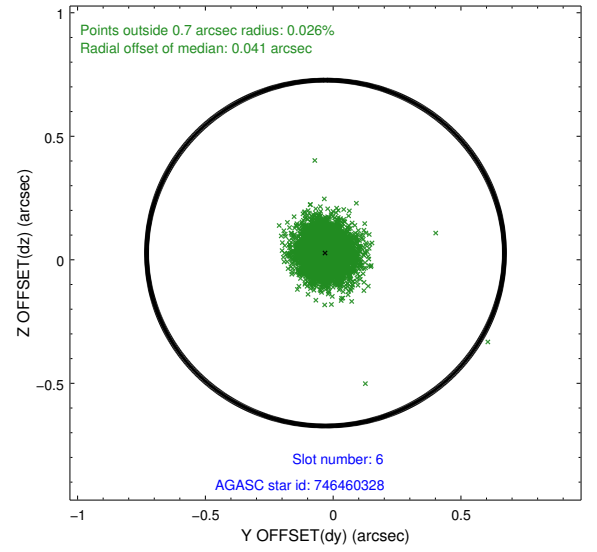
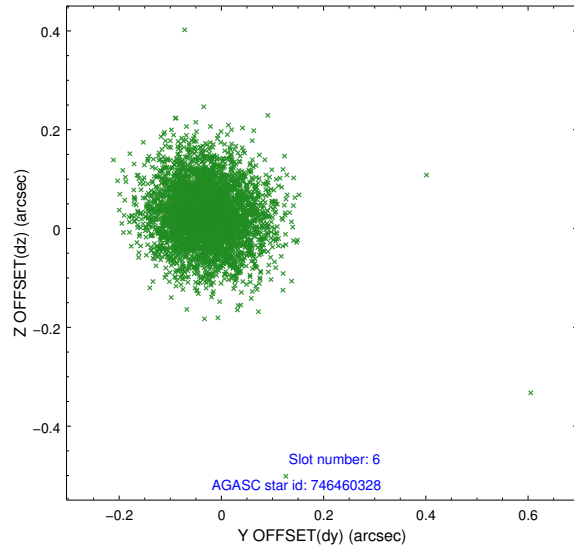
2.4.2 Slot 4



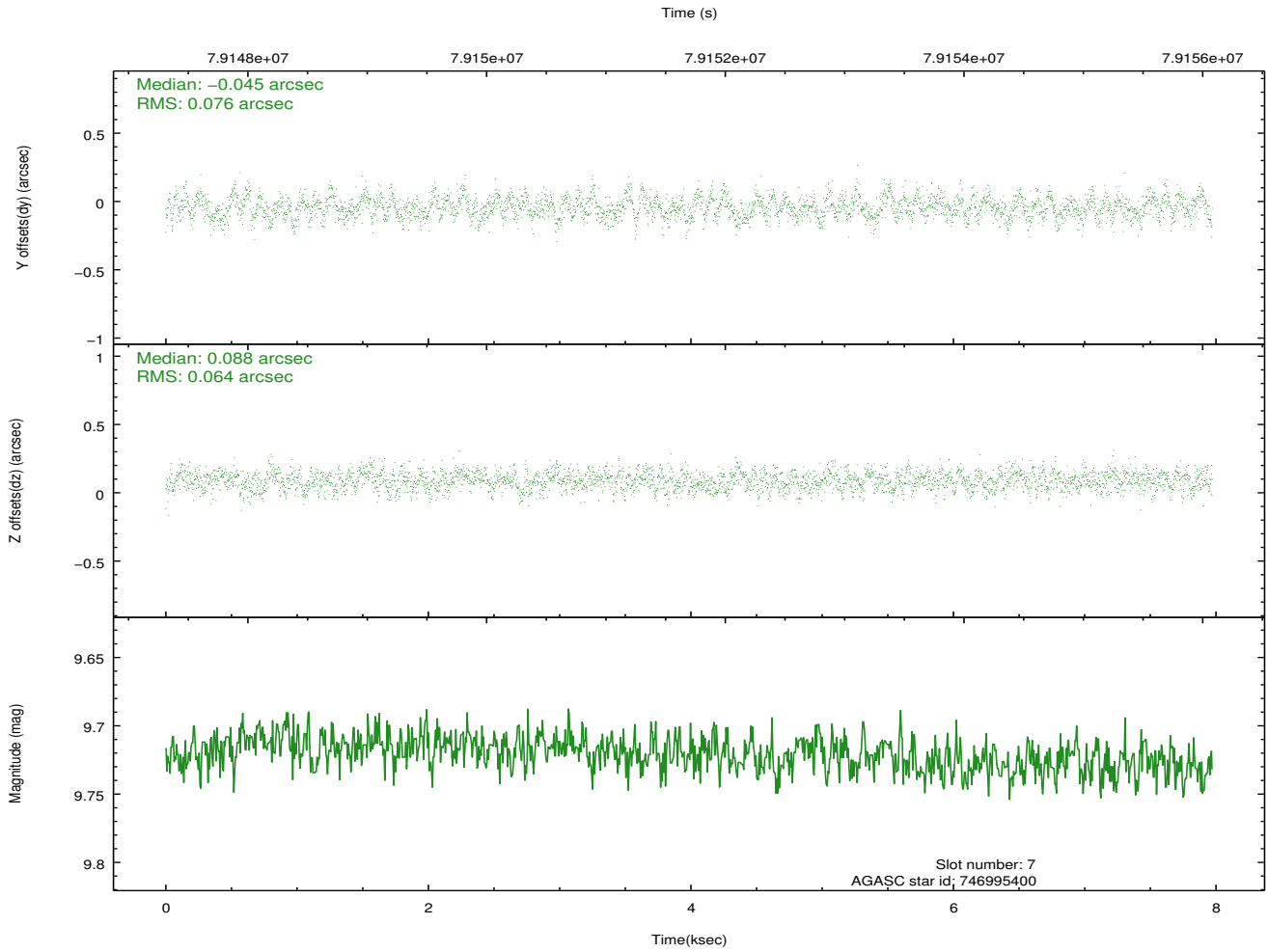
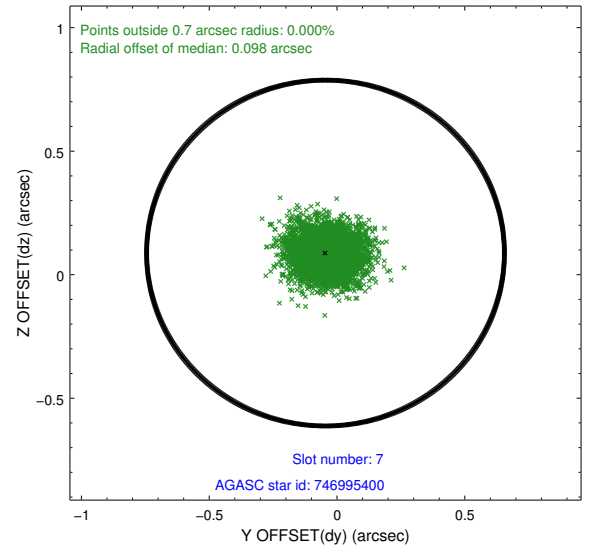
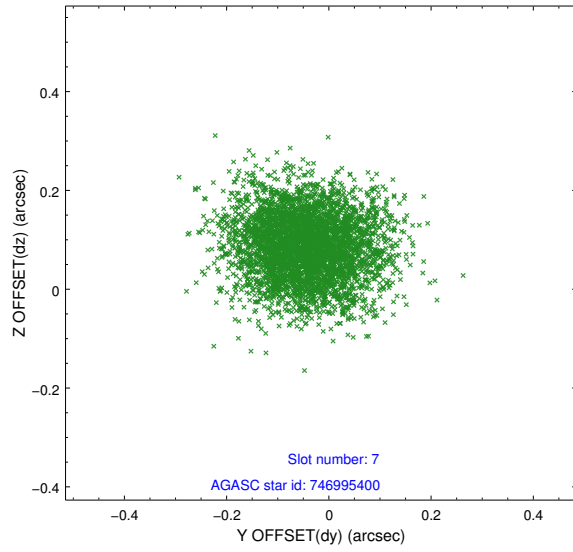
2.4.3 Slot 5



2.4.4 Slot 6

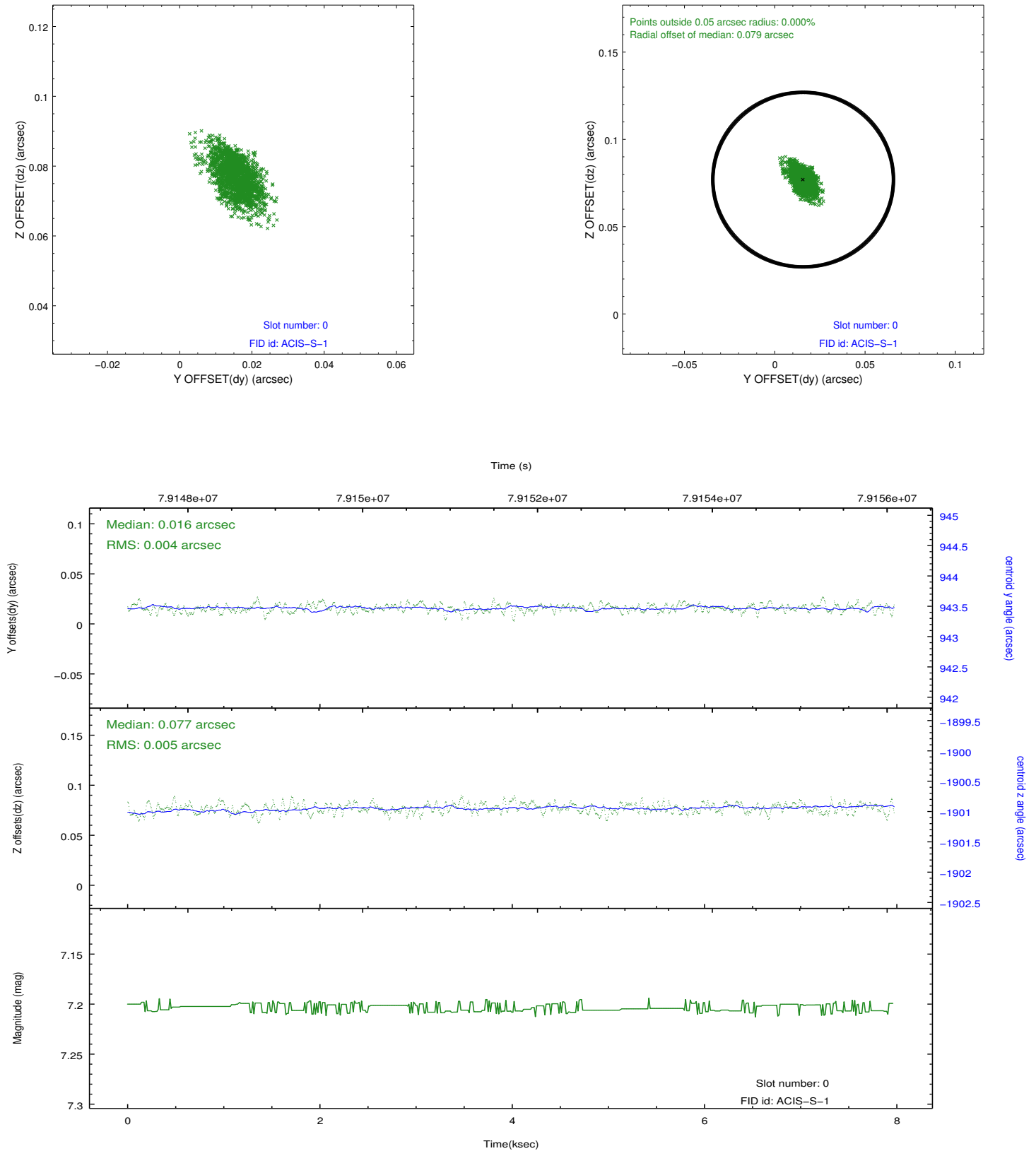


2.4.5 Slot 7

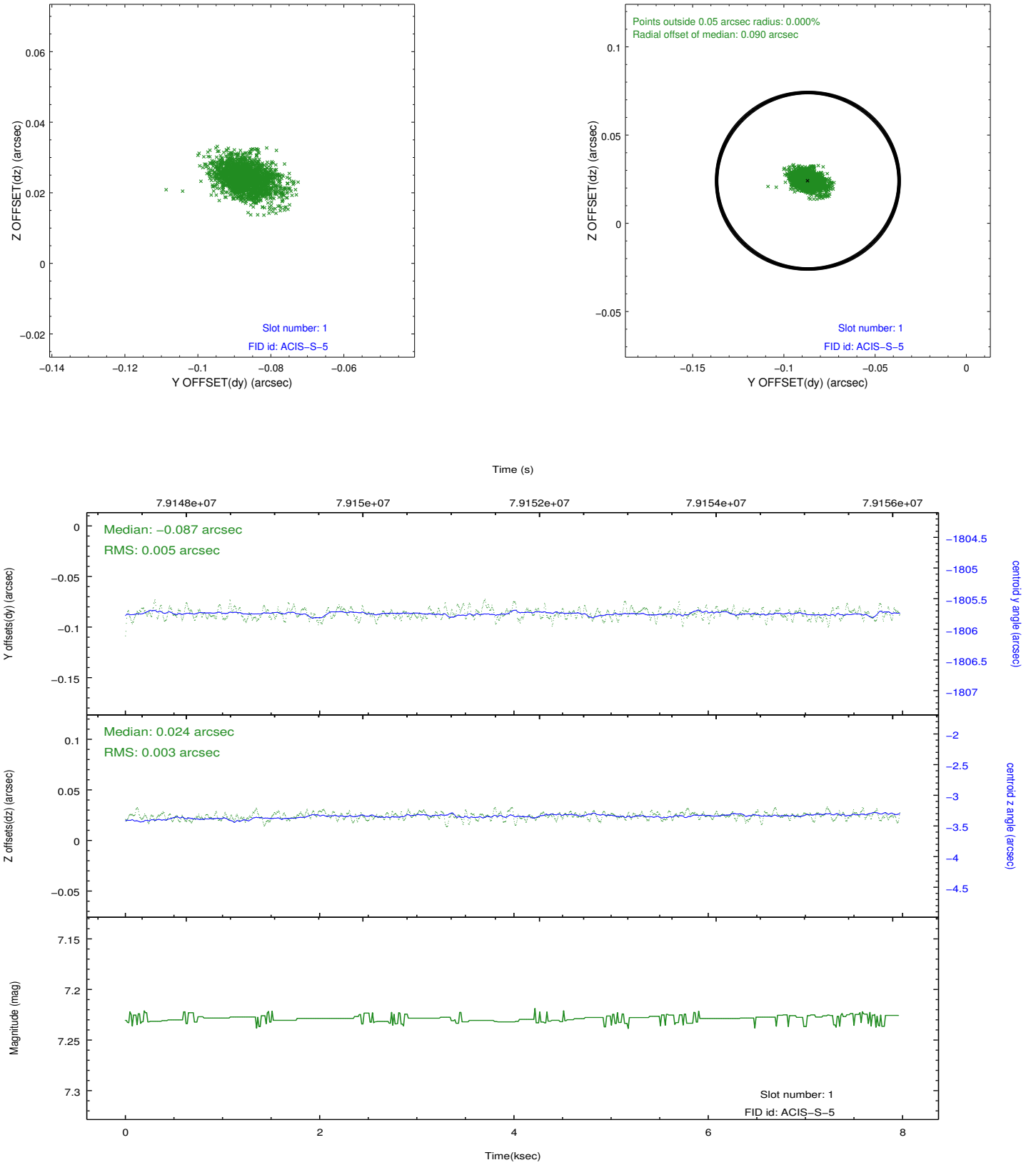


2.5 FID Slots

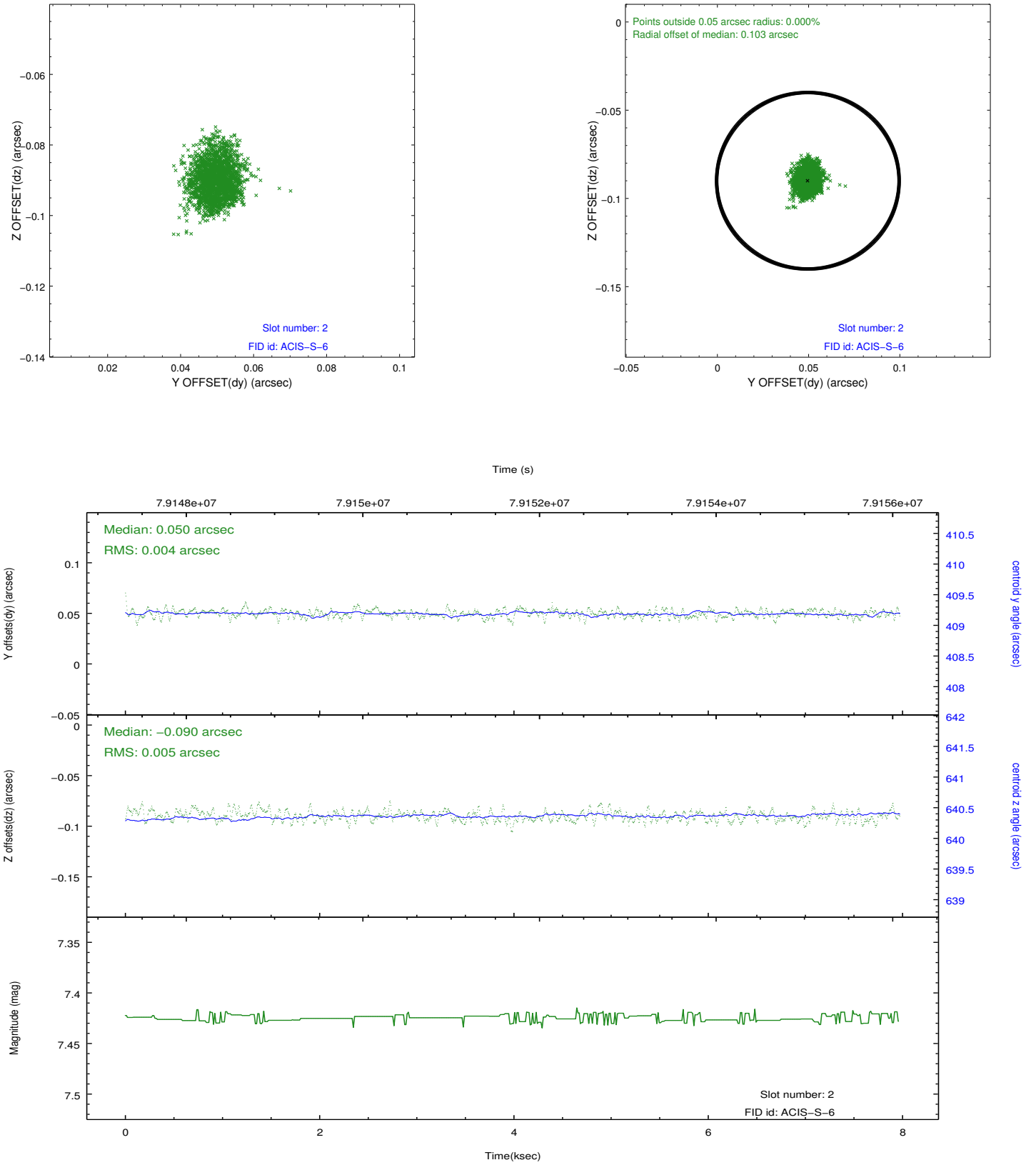
2.5.1 Slot 0



2.5.2 Slot 1



2.5.3 Slot 2



A Summary

A.1 Status

V&V Scientist	Jen Lauer
V&V Date (YYYY-MM-DD)	2012.09.05
V&V Edition	1
V&V Disposition and Status	OK
V&V Charge Time	7.516

A.2 Comments

The focal-plane temperature was set to a temperature of about -109.2 C during this observation and others in the interval from September 17, 1999 to January 29, 2000. The current reprocessing of the data applies no charge-transfer inefficiency (CTI) adjustment to the data because the ACIS CTI adjustment has not been calibrated at this temperature. The CTI adjustment is calibrated for data taken from January 30, 2000 to the present, when the focal-plane temperature is set to -119.7 C. However, if the observation includes one or both back-illuminated CCDs ACIS-S1 and ACIS-S3, then a time-dependent gain adjustment is applied to the data for these CCDs. The ACIS spectral response calibration is less accurate at temperatures of about -109.2 C than it is at -119.7 C. Users whose science objectives depend on the most accurate spectral response (i.e. fitting line-rich spectra) may notice an effect. Users whose science objectives do not depend on the most accurate spectral response (e.g. those interested in imaging or timing analyses) should not notice an effect.