

V&V Reference Report

L2 ASCDS Version : 7.6.10

Observation 1769 - L2 Version 4
Chandra X-Ray Center

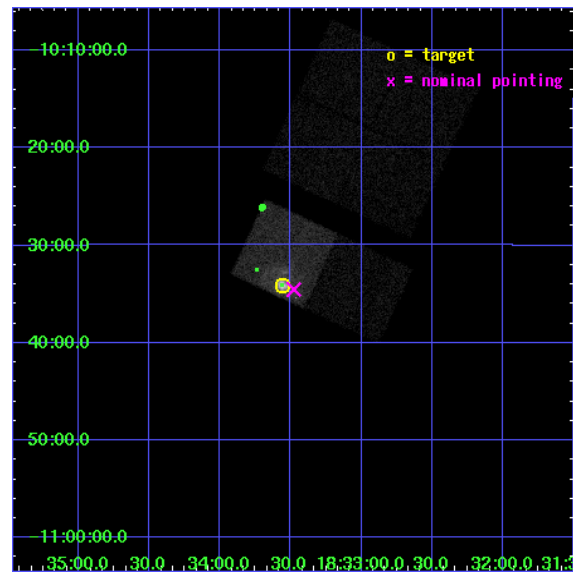
L2 Processing Date : Nov 12 2008

Contents

1	Front	2
2	OBI	3
2.1	OBI	3
2.1.1	Images	3
2.1.2	Bias	3
2.1.3	Parameters	4
2.1.4	Events	4
2.2	Compared Parameters	5
2.3	Aspect	6
2.4	Star Slots	9
2.4.1	Slot 3	9
2.4.2	Slot 4	10
2.4.3	Slot 5	11
2.4.4	Slot 6	12
2.4.5	Slot 7	13
2.5	FID Slots	14
2.5.1	Slot 0	14
2.5.2	Slot 1	15
2.5.3	Slot 2	16
3	Point Sources	17
A	Summary	18
A.1	Status	18
A.2	Comments	18

1 Front

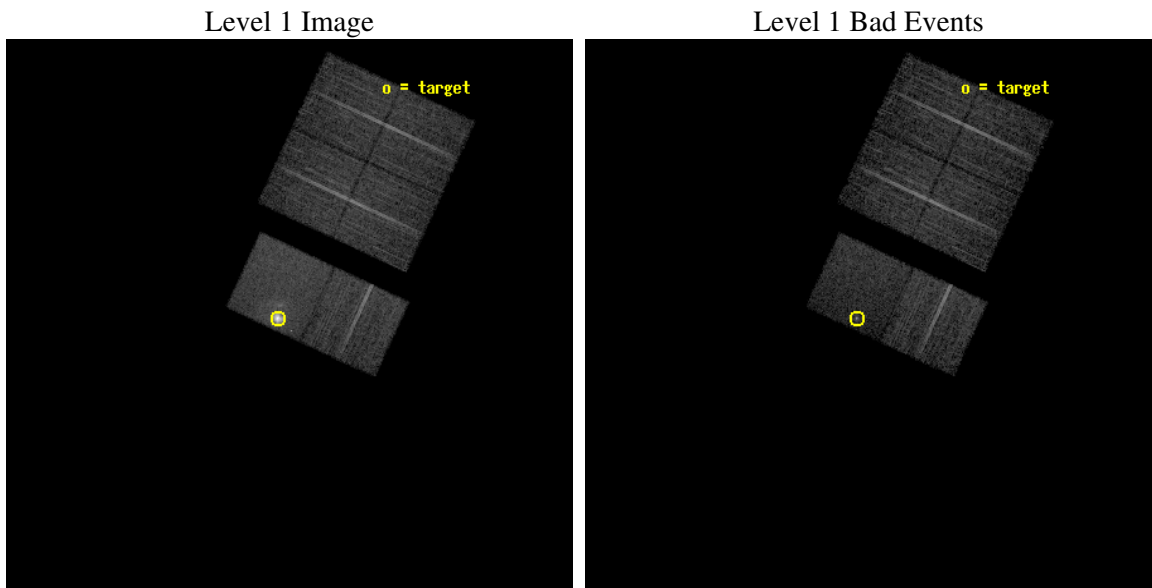
seq_num	590195
obs_id	1769
title	HRC RESPONSE TO CONTINUUM SOURCE.
observer	Dr. CXC Calibration
object	G21.5-0.9 [Chip S3, T=110, Offsets=-1,0,3]
dtcycle	0
cycle	P
ra_targ	278.389583
dec_targ	-10.568528
ra_nom	278.36948913106
dec_nom	-10.575726825285
roll_nom	204.91005986037
revision	4
ontime	7510.4000069946
livetime	7415.2987998861
ontime0	7507.1590367556
ontime1	7510.4000069946
ontime2	7510.4000069946
ontime3	7510.4000069946
ontime6	7510.4000069946
ontime7	7510.4000069946
l2events	74481



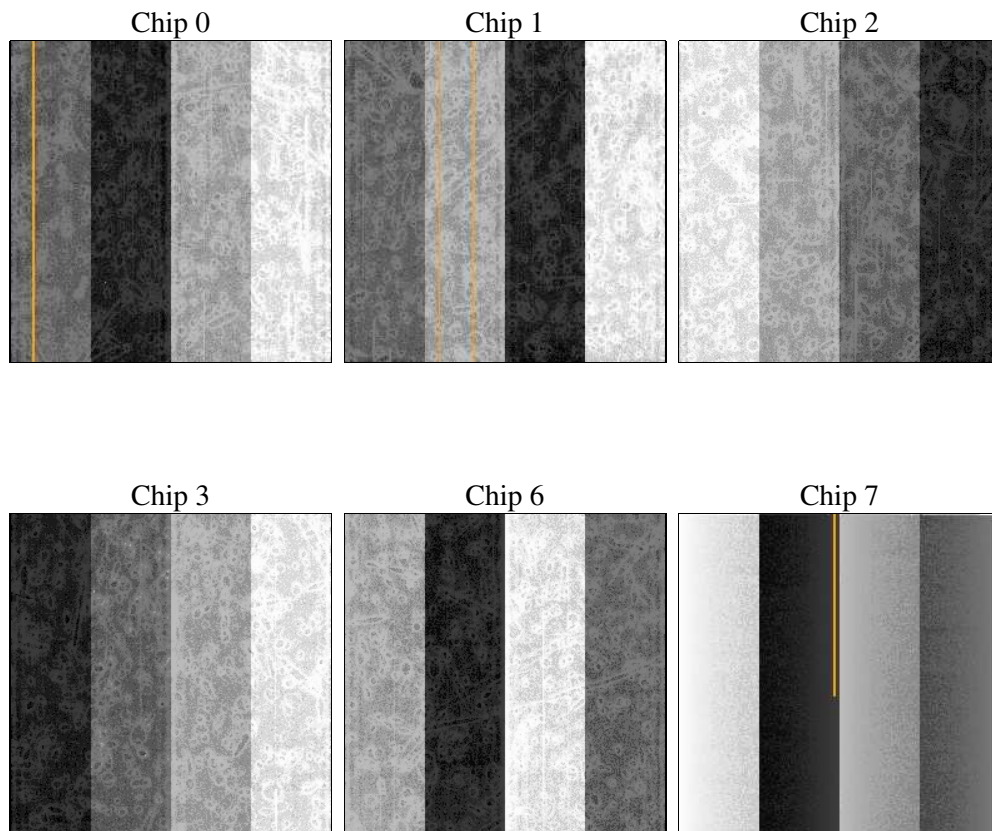
2 OBI

2.1 OBI

2.1.1 Images



2.1.2 Bias



2.1.3 Parameters

obi_num	0
ascdsver	7.6.11.9
caldsver	3.5.0
date	2008-11-10T21:59:25
revision	4

sched_exp_time	7560.000000
ontime	7510.4000069946
ontime0	7507.1590367556
ontime1	7510.4000069946
ontime2	7510.4000069946
ontime3	7510.4000069946
ontime6	7510.4000069946
ontime7	7510.4000069946
l1events	343822

2.1.4 Events

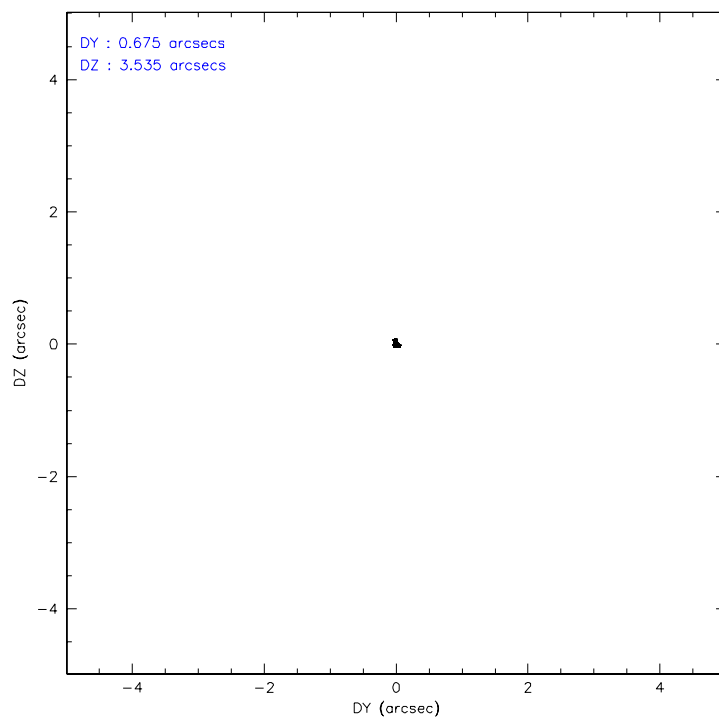
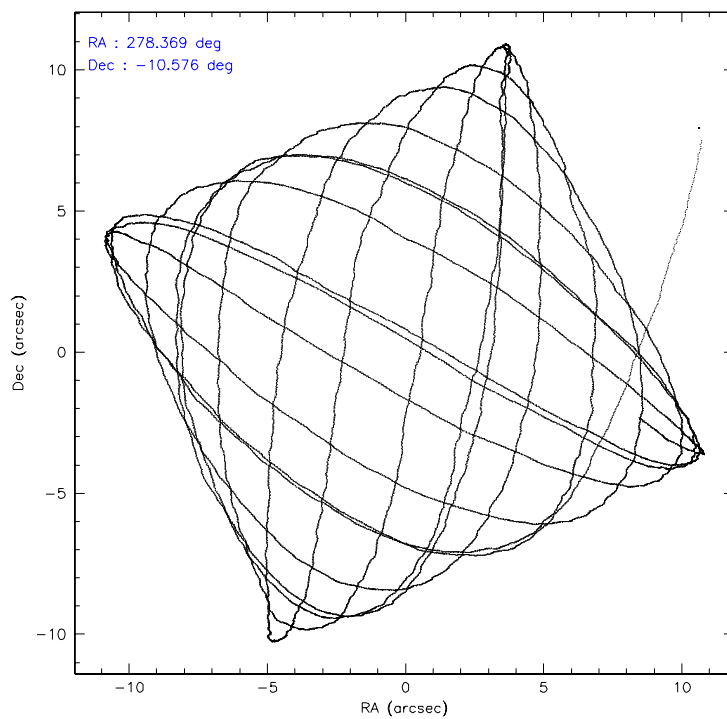
	ccd 0	ccd 1	ccd 2	ccd 3	ccd 6	ccd 7
level 1 events	49114	48833	52964	51177	55893	85841
rejected events	43510	42778	47853	45608	50033	36375
rejected %	88%	87%	90%	89%	89%	42%

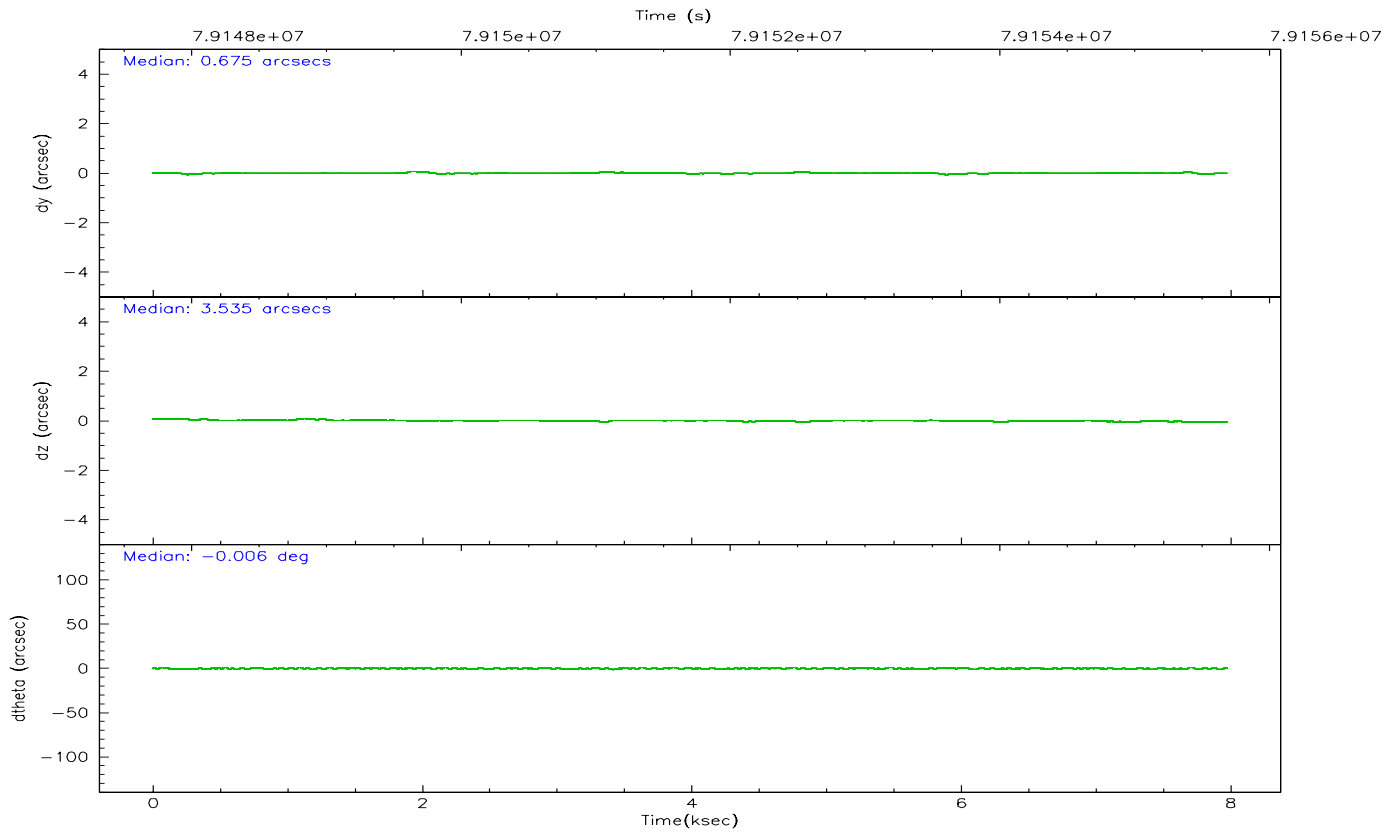
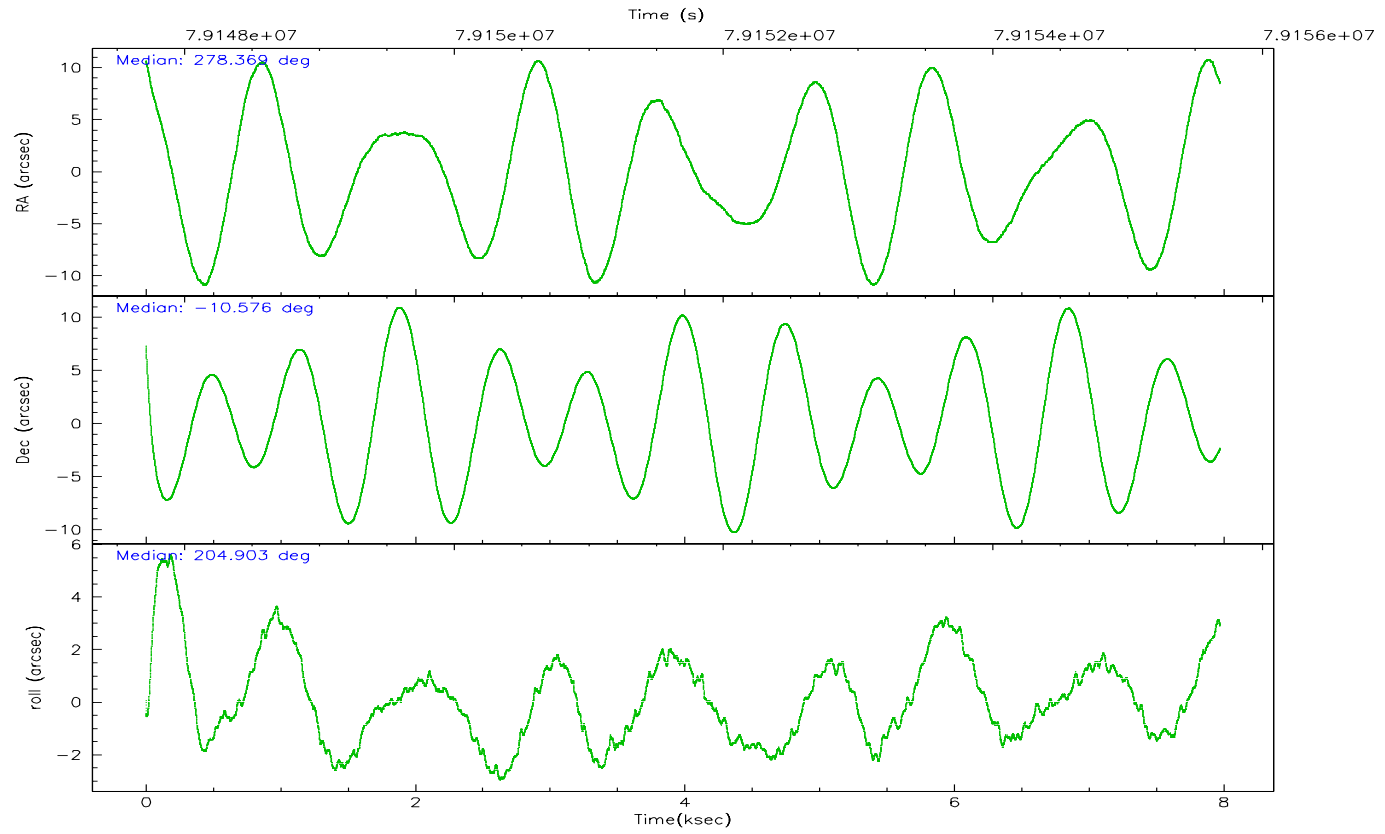
	ccd 0	ccd 1	ccd 2	ccd 3	ccd 6	ccd 7
grade 0 events	1392	1594	1091	1292	1302	6234
	2%	3%	2%	2%	2%	7%
grade 1 events	11	17	4	14	8	74
	0%	0%	0%	0%	0%	0%
grade 2 events	2129	2165	2068	2240	2312	11391
	4%	4%	3%	4%	4%	13%
grade 3 events	425	430	332	339	339	4556
	0%	0%	0%	0%	0%	5%
grade 4 events	372	435	334	331	337	4062
	0%	0%	0%	0%	0%	4%
grade 5 events	1059	1127	933	1072	1187	3897
	2%	2%	1%	2%	2%	4%
grade 6 events	1293	1436	1290	1372	1573	23283
	2%	2%	2%	2%	2%	27%
grade 7 events	42433	41629	46912	44517	48835	32344
	86%	85%	88%	86%	87%	37%

2.2 Compared Parameters

Parameter	Planned	Actual	Parameter	Planned	Actual
Instrument	ACIS	ACIS	Obspar format version number	6	6
Detector	ACIS-012367	ACIS-012367	Obspar file type	PREDICTED	ACTUAL
Grating	NONE	NONE	Obspar update status	NONE	UPDATED
Data mode	FAINT	FAINT	Number of optional ACIS chips dropped	0	0
Observation mode	POINTING	POINTING	On-chip summing requested	N	N
Pointing RA	278.385369	278.3694891310648	Subarray requested	NONE	NONE
Pointing Dec	-10.553184	-10.57572682528511	Alternating exposures requested	N	N
Pointing Roll	204.756347	204.910059860372	Primary exposure time	0.000000	3.2
SIM focus pos (mm)	-0.684267	-0.6828225247311905			
SIM defocus (mm)	0	0.001444936568705701			
SIM translation stage pos (mm)	-181.348523	-181.3550483862213			
SIM translation stage offset (mm)	-8.784000000000001	-8.777474196786557			
Observation start time	79148126.184000	79147054.59016301			
Observation start date	2000-07-05T01:34:22	2000-07-05T01:17:34			
Observation end time	79155686.184000	79155819.877986			
Observation end date	2000-07-05T03:40:22	2000-07-05T03:43:39			
Read mode	TIMED	TIMED			

2.3 Aspect



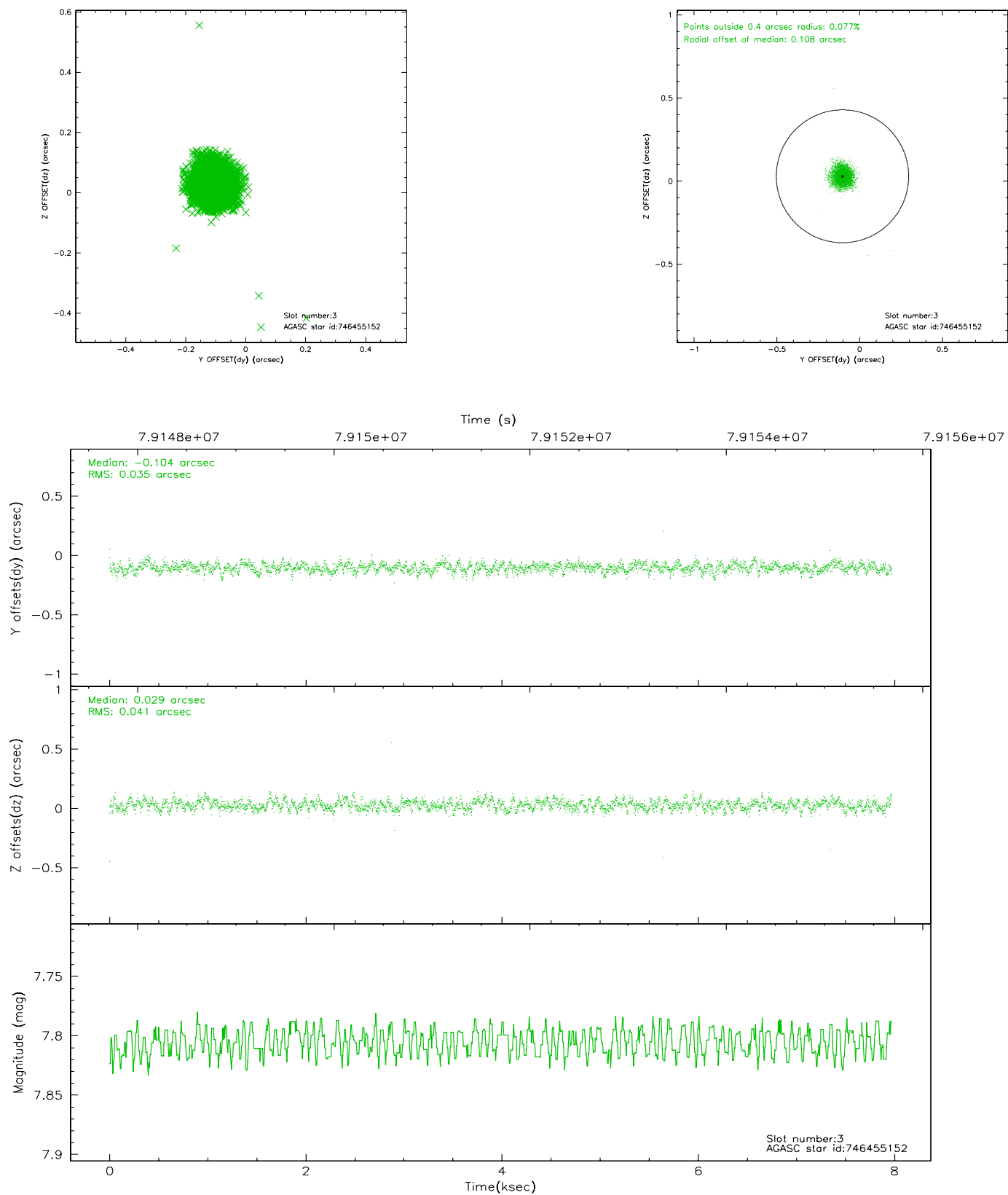


Slot Statistics

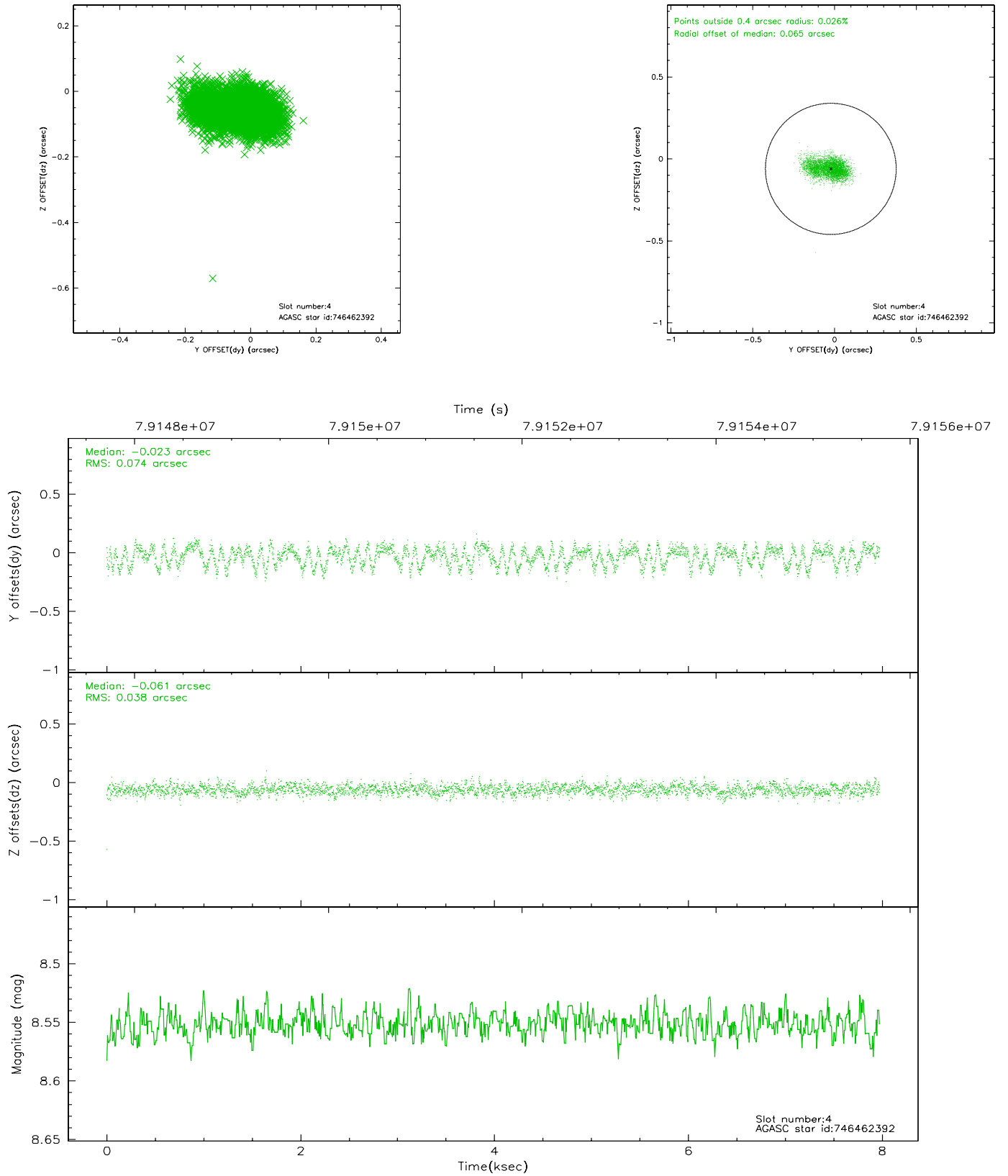
slot	status	id	mag	n_pts	med_dy	med_dz	dr1	dr2	ra	dec	mean_y	mean_z
0	FID	ACIS-S-1	7.20	1945	-0.004	0.104	0.006	0.010	0.000000	0.000000	943.45	-1900.91
1	FID	ACIS-S-5	7.23	1944	-0.056	0.016	0.006	0.010	0.000000	0.000000	-1805.23	-4.32
2	FID	ACIS-S-6	7.43	1945	0.039	-0.109	0.007	0.010	0.000000	0.000000	408.25	640.35
3	GUIDE	746455152	7.81	3891	-0.104	0.029	0.056	0.087	278.447893	-9.976732	-1070.53	-1791.69
4	GUIDE	746462392	8.55	3891	-0.023	-0.061	0.087	0.147	279.038421	-10.890715	-1587.54	2071.94
5	GUIDE	746455112	8.93	3889	0.209	-0.085	0.068	0.114	278.266531	-10.703234	607.42	315.17
6	GUIDE	746460328	9.81	3881	-0.030	0.027	0.089	0.144	278.603974	-9.898096	-1691.45	-1816.70
7	GUIDE	746995400	9.72	3887	-0.045	0.088	0.105	0.172	278.078957	-11.289885	2092.24	1955.89

2.4 Star Slots

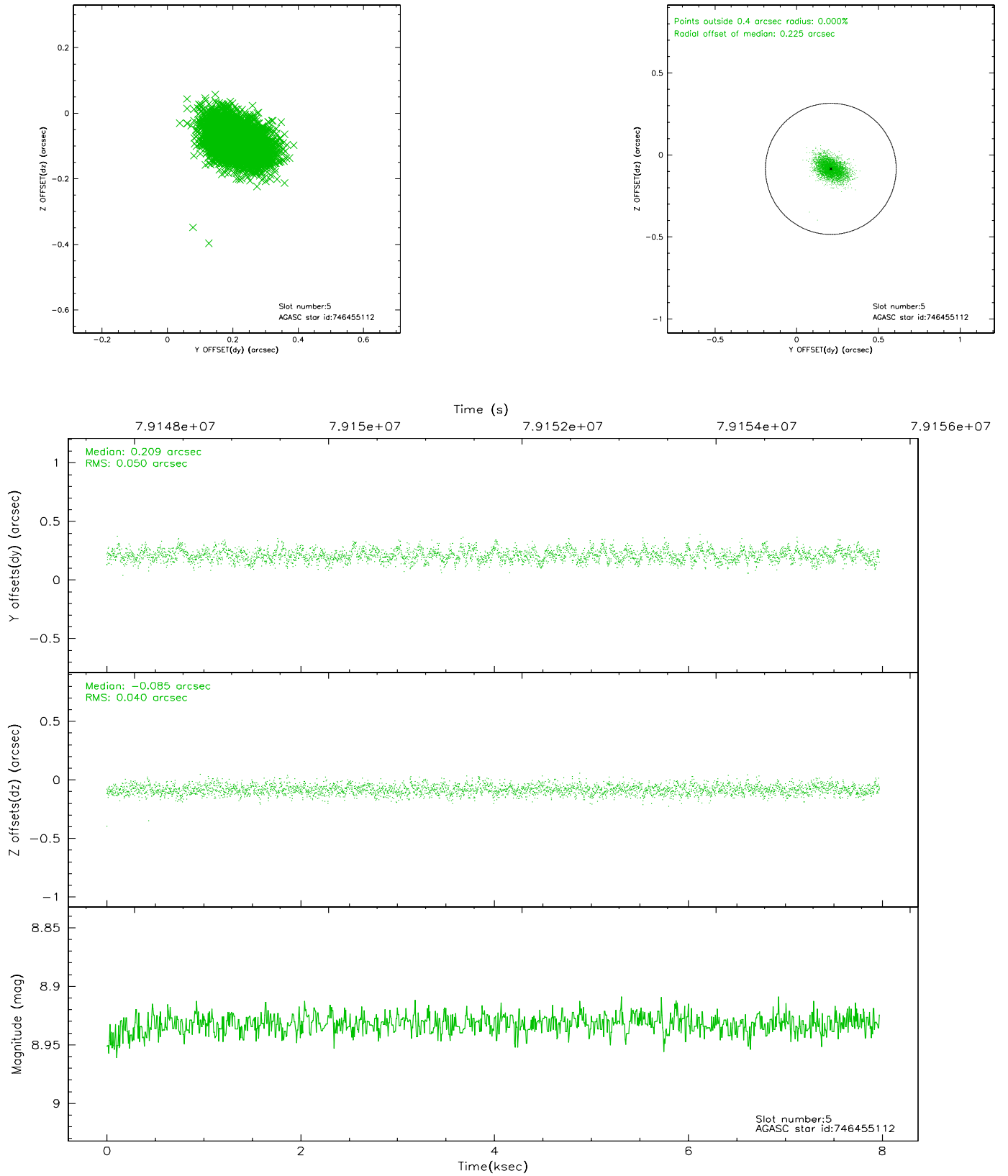
2.4.1 Slot 3



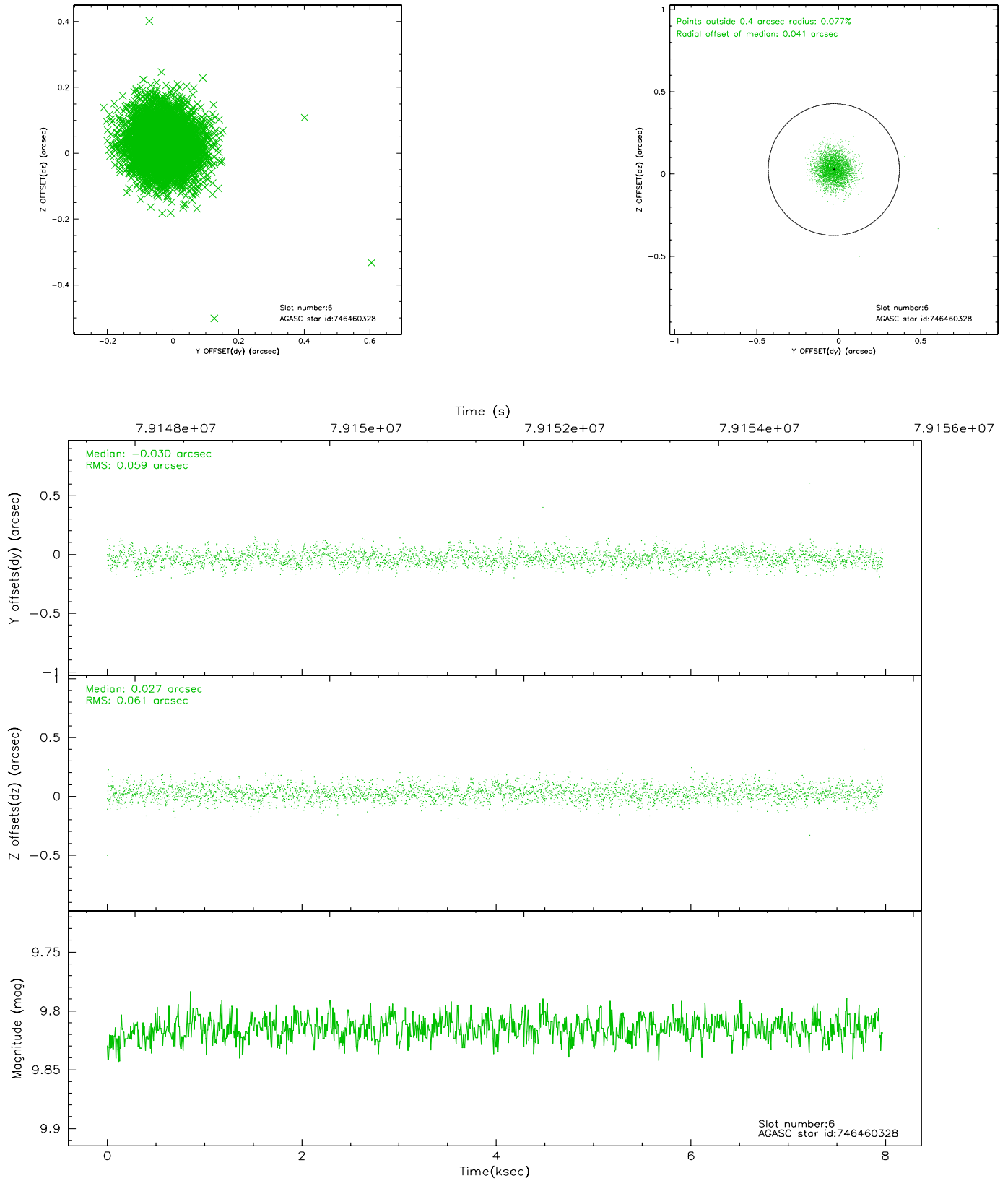
2.4.2 Slot 4



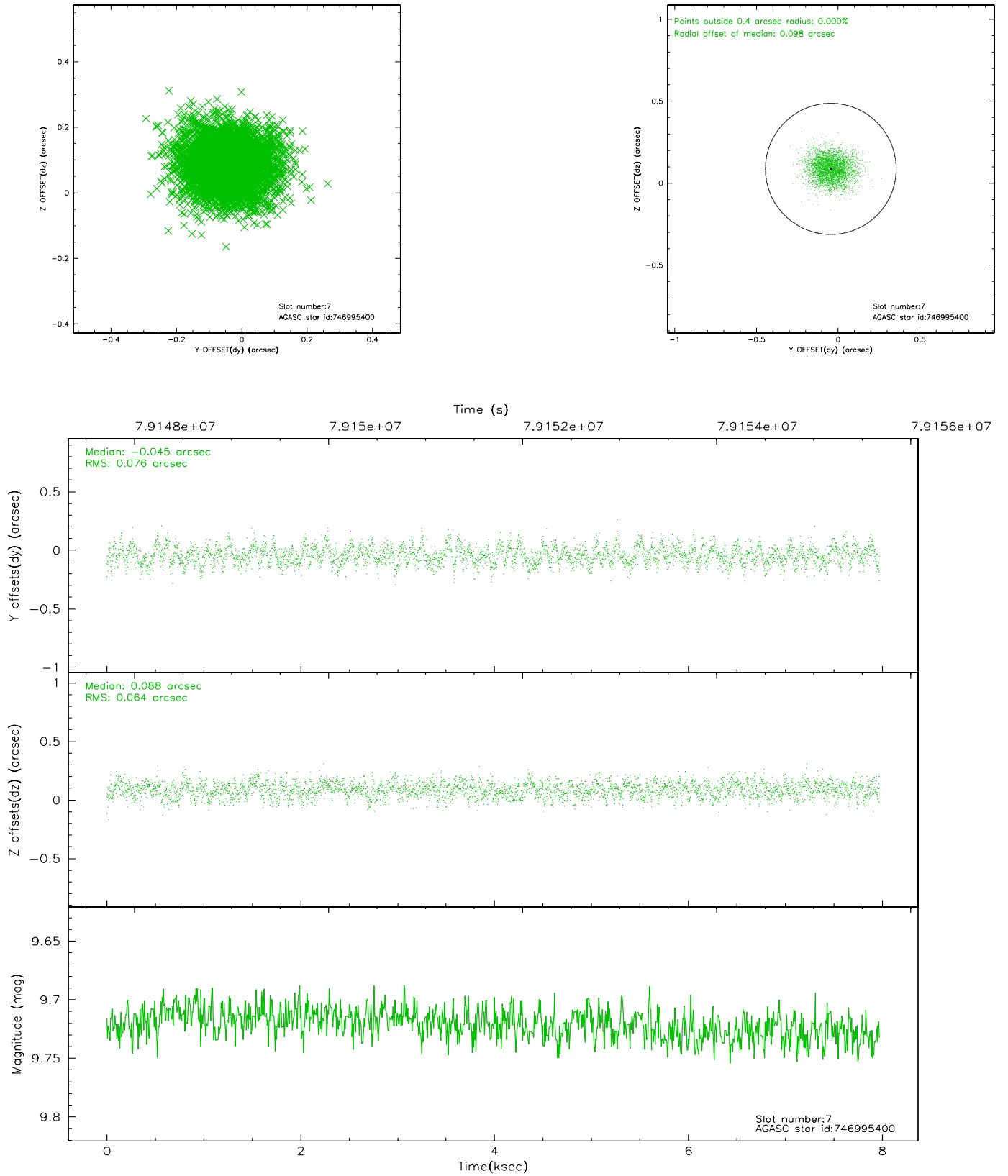
2.4.3 Slot 5



2.4.4 Slot 6

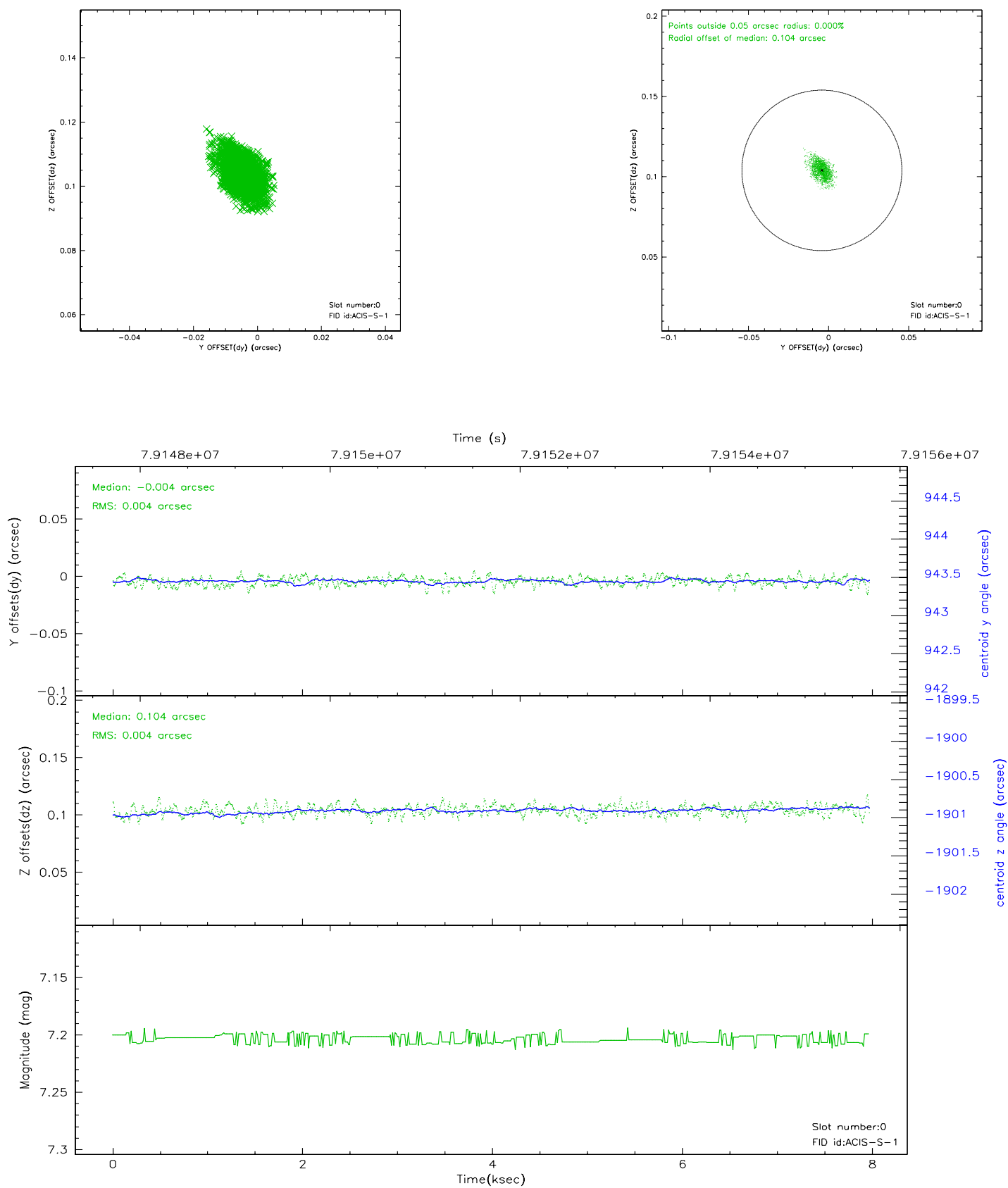


2.4.5 Slot 7

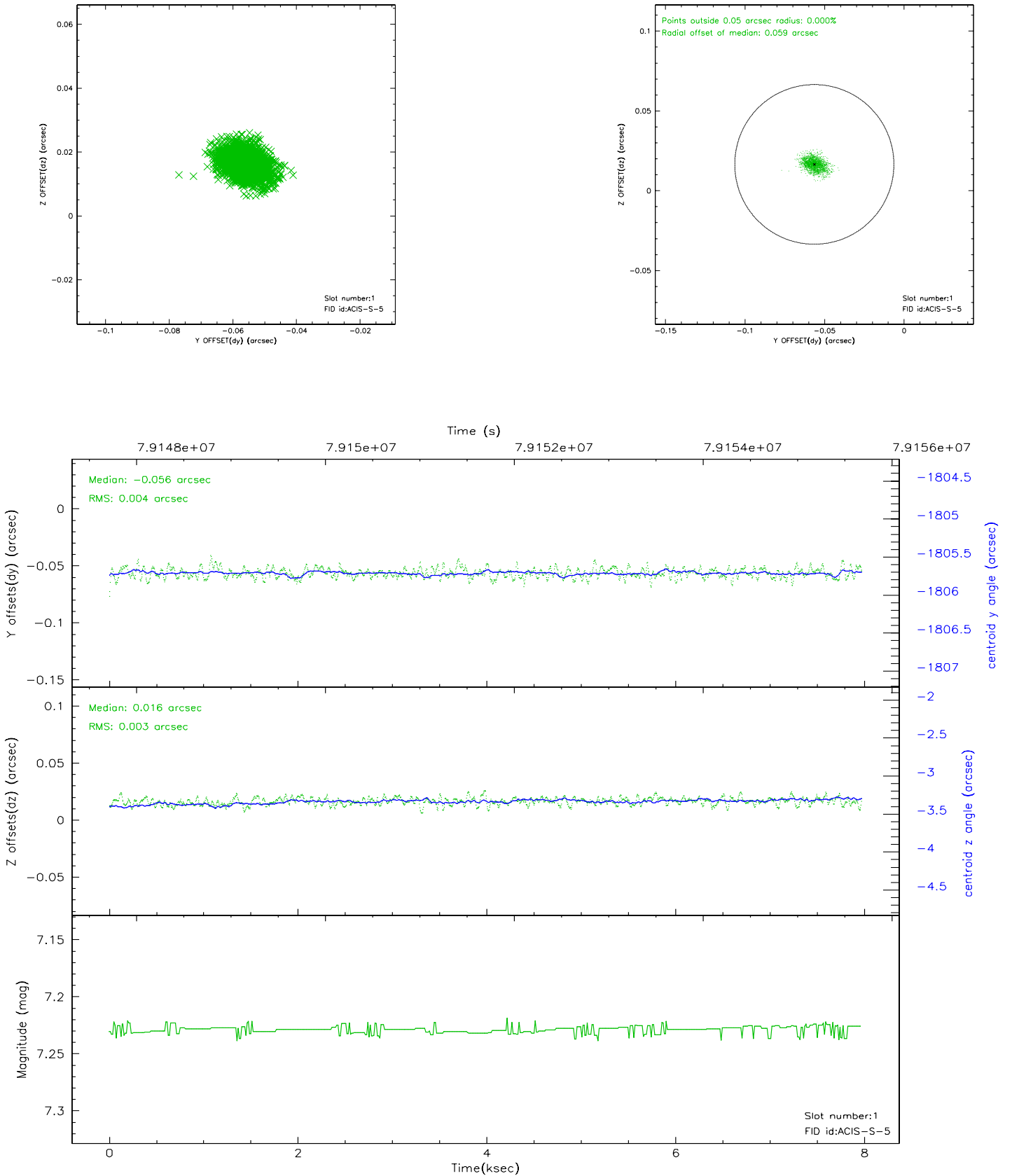


2.5 FID Slots

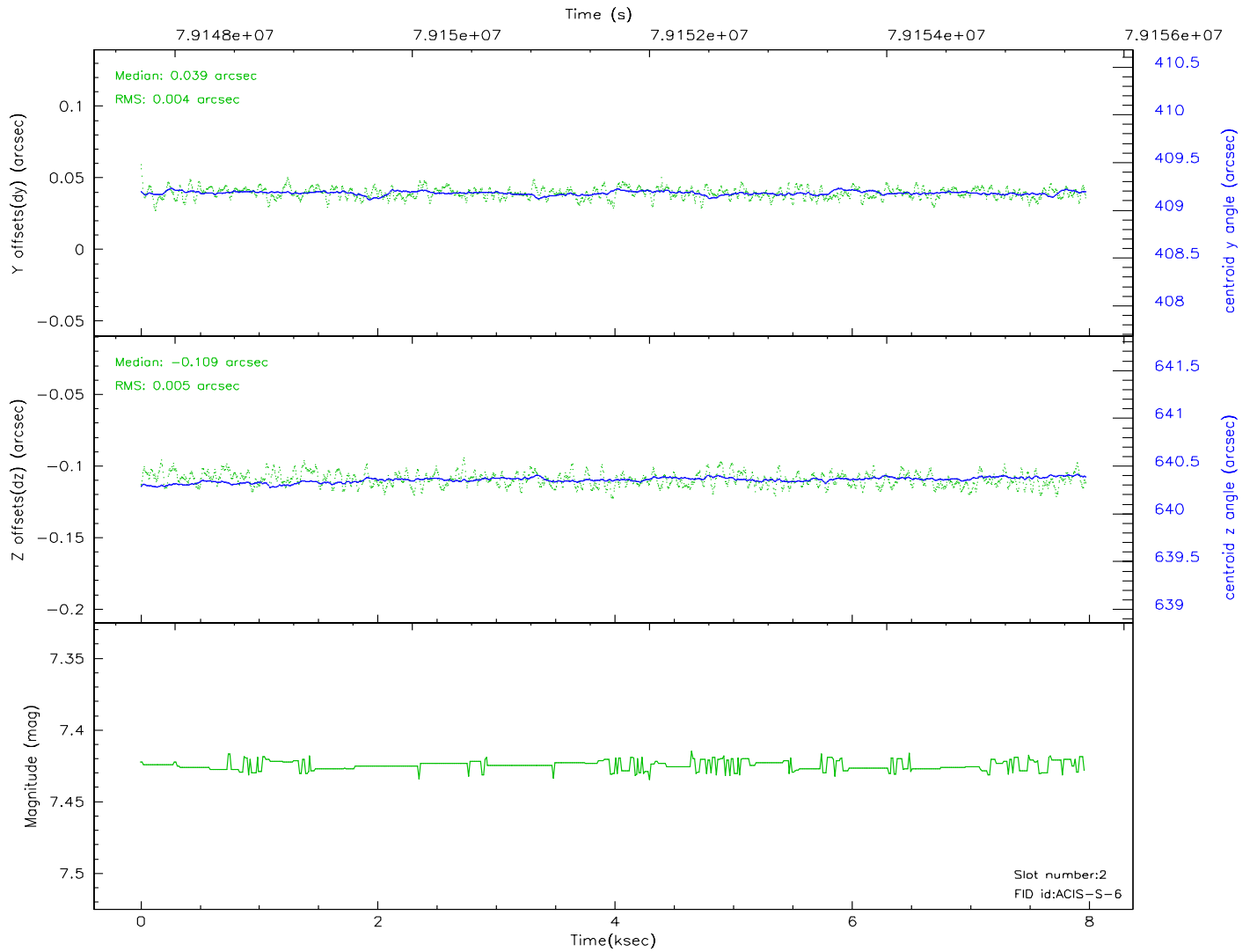
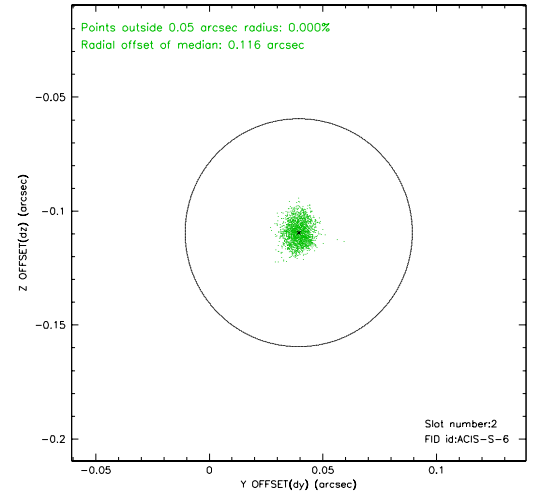
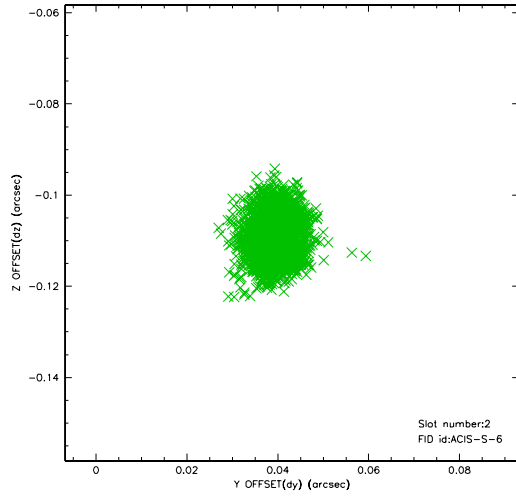
2.5.1 Slot 0



2.5.2 Slot 1



2.5.3 Slot 2



3 Point Sources

A Summary

A.1 Status

V&V Scientist	Joy Nichols
V&V Date (YYYY-MM-DD)	2008.11.20
V&V Edition	2
V&V Disposition and Status	OK
V&V Charge Time	7.516

A.2 Comments

Charge time for this ObsId remains at original value of 7.516 ks, although with the current processing the charge time would have been 7.510 ksec. This calibration observation was acquired with the focal plane temperature raised from -120C to -110C, for attempted recalibration of ACIS for the 1999-09-16 through 2000-01-28 period.
=====This reprocessing of the data applies no CTI correction because none is available for that temperature.
=====

Focal plane temperature is warmer than -118.7 C degrees during the entire observation. This temperature is the upper limit of the verified ACIS calibration for the front-illuminated chips. The focal plane temperature is warmer than -116.7 degrees C for approximately the entire observation. This temperature is the upper limit of the verified ACIS calibration for the back-illuminated chips. The ACIS spectral response calibration is less accurate at these warmer temperatures than it is at -119.7 C. Users whose science objectives depend on the most accurate spectral response (ie: fitting line-rich spectra) may notice an effect. Users whose science objectives do not depend on the most accurate spectral response should not notice an effect.