

V&V Reference Report

L2 ASCDS Version : 7.6.10

Observation 1737 - L2 Version 001
Chandra X-Ray Center

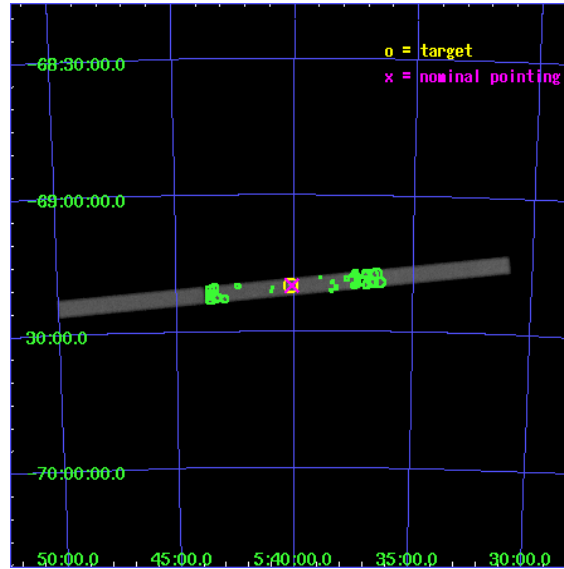
L2 Processing Date : May 27 2007

Contents

1	Front	2
2	OBI	3
2.1	OBI	3
2.1.1	Images	3
2.1.2	Parameters	4
2.1.3	Events	4
2.2	Compared Parameters	5
2.3	Aspect	6
2.4	Star Slots	9
2.4.1	Slot 3	9
2.4.2	Slot 4	10
2.4.3	Slot 5	11
2.4.4	Slot 6	12
2.4.5	Slot 7	13
2.5	FID Slots	14
2.5.1	Slot 0	14
2.5.2	Slot 1	15
2.5.3	Slot 2	16
3	Point Sources	17
A	Summary	18
A.1	Status	18
A.2	Comments	18

1 Front

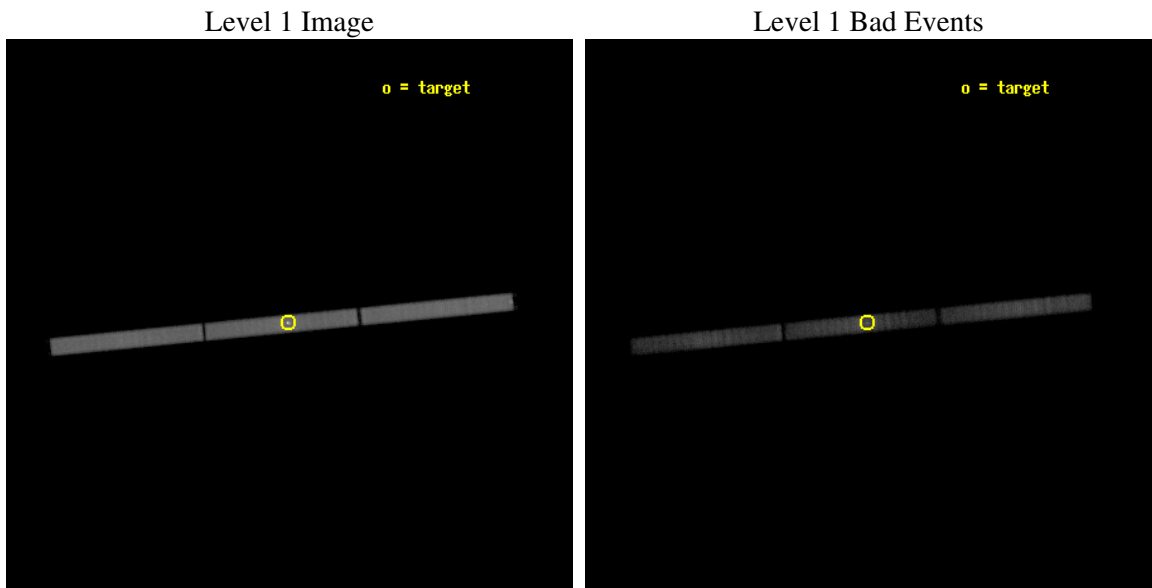
seq_num	590186
obs_id	1737
title	VERIFICATION OF AXAF TIMING CAPABILITY
observer	Dr. CXC Calibration
object	PSR B0540-69
ra_targ	85.04625
dec_targ	-69.332
ra_nom	85.032012929516
dec_nom	-69.331227164605
roll_nom	174.3793802807
revision	5
ontime	9738.7816090137
livetime	9683.1596877667
l2events	407191



2 OBI

2.1 OBI

2.1.1 Images



2.1.2 Parameters

obi_num	0
ascdsver	7.6.10
caldbver	3.4.0
date	2007-05-27T06:17:29
revision	4

sched_exp_time	9885.000000
ontime	9738.7816090137
l1events	630619

2.1.3 Events

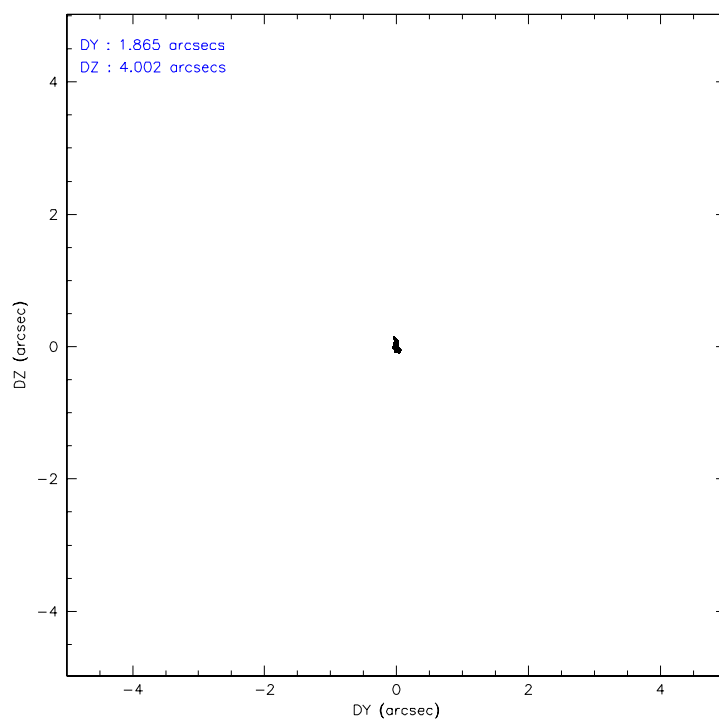
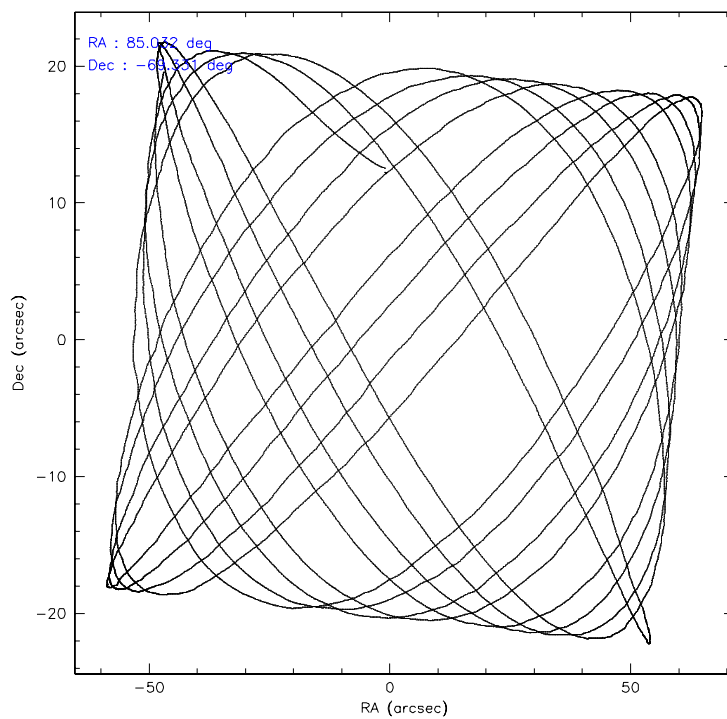
Level 1 Events

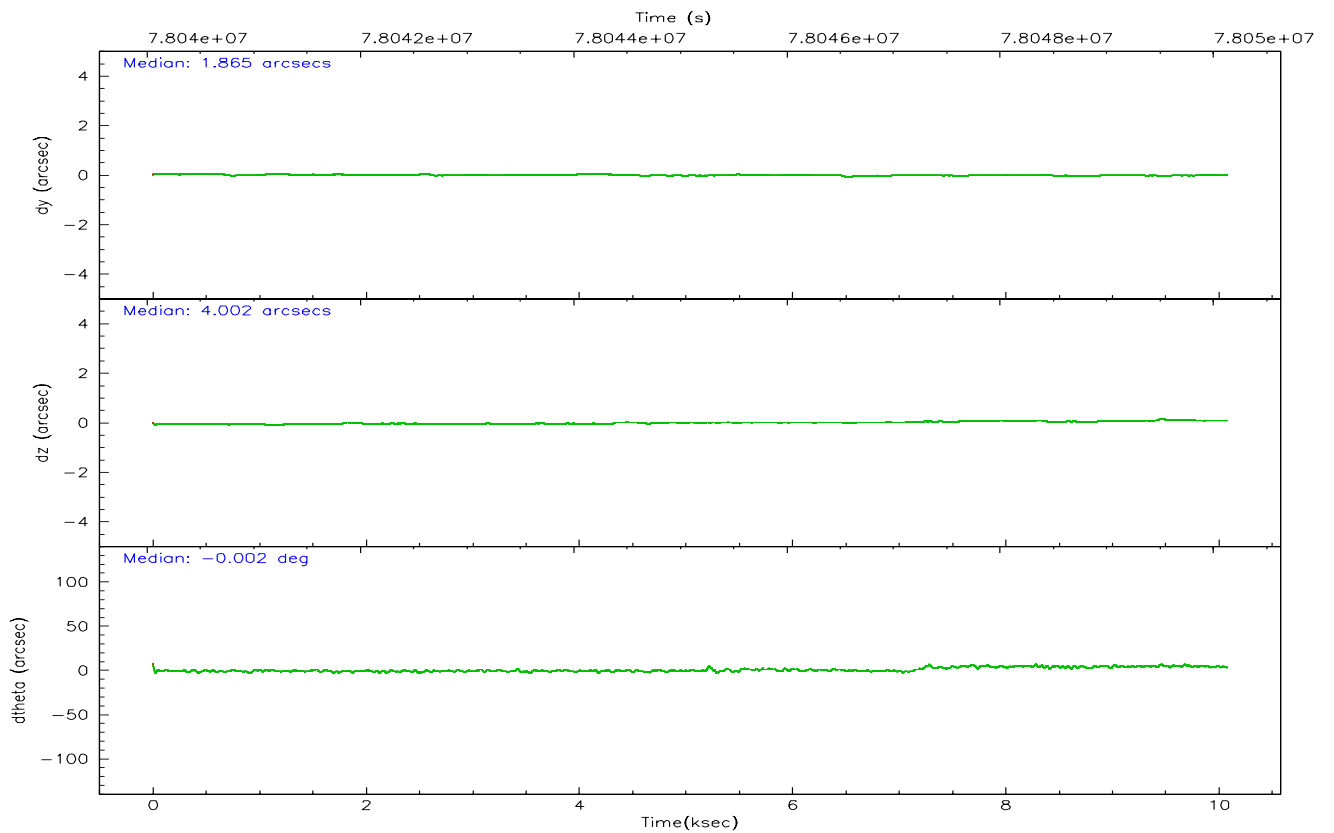
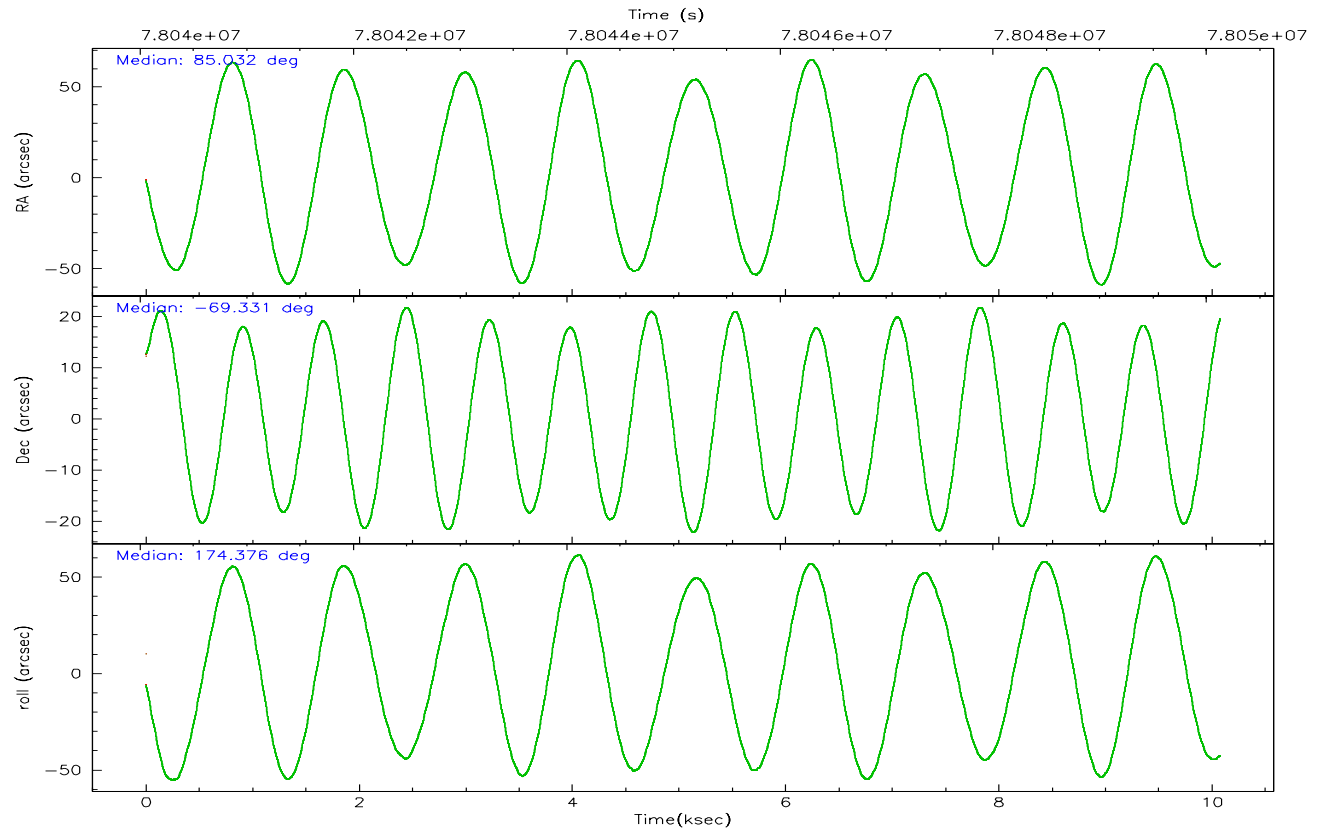
	segment 1	segment 2	segment 3
level 1 events	198924	212342	219353
rejected events	51483	56153	62096
rejected %	25%	26%	28%

2.2 Compared Parameters

Parameter	Planned	Actual	Parameter	Planned	Actual
Instrument	HRC	HRC	Obspar format version number	6	6
Detector	HRC-S	HRC-S	Obspar file type	PREDICTED	ACTUAL
Grating	NONE	NONE	Obspar update status	NONE	UPDATED
Data mode	OBSERVING	OBSERVING			
Observation mode	POINTING	POINTING			
Pointing RA	85.105132	85.03201292951552			
Pointing Dec	-69.318310	-69.33122716460477			
Pointing Roll	174.380454	174.3793802807041			
SIM focus pos (mm)	-1.429586	-1.428180813131781			
SIM defocus (mm)	0.1037507710433287	0.1051558262725154			
SIM translation stage pos (mm)	250.455976	250.466033080201			
SIM translation stage offset (mm)	0	-0.01005468664627074			
Observation start time	78040247.184000	78039873.636843			
Observation start date	2000-06-22T05:49:43	2000-06-22T05:44:33			
Observation end time	78050132.184000	78050266.624726			
Observation end date	2000-06-22T08:34:28	2000-06-22T08:37:46			

2.3 Aspect



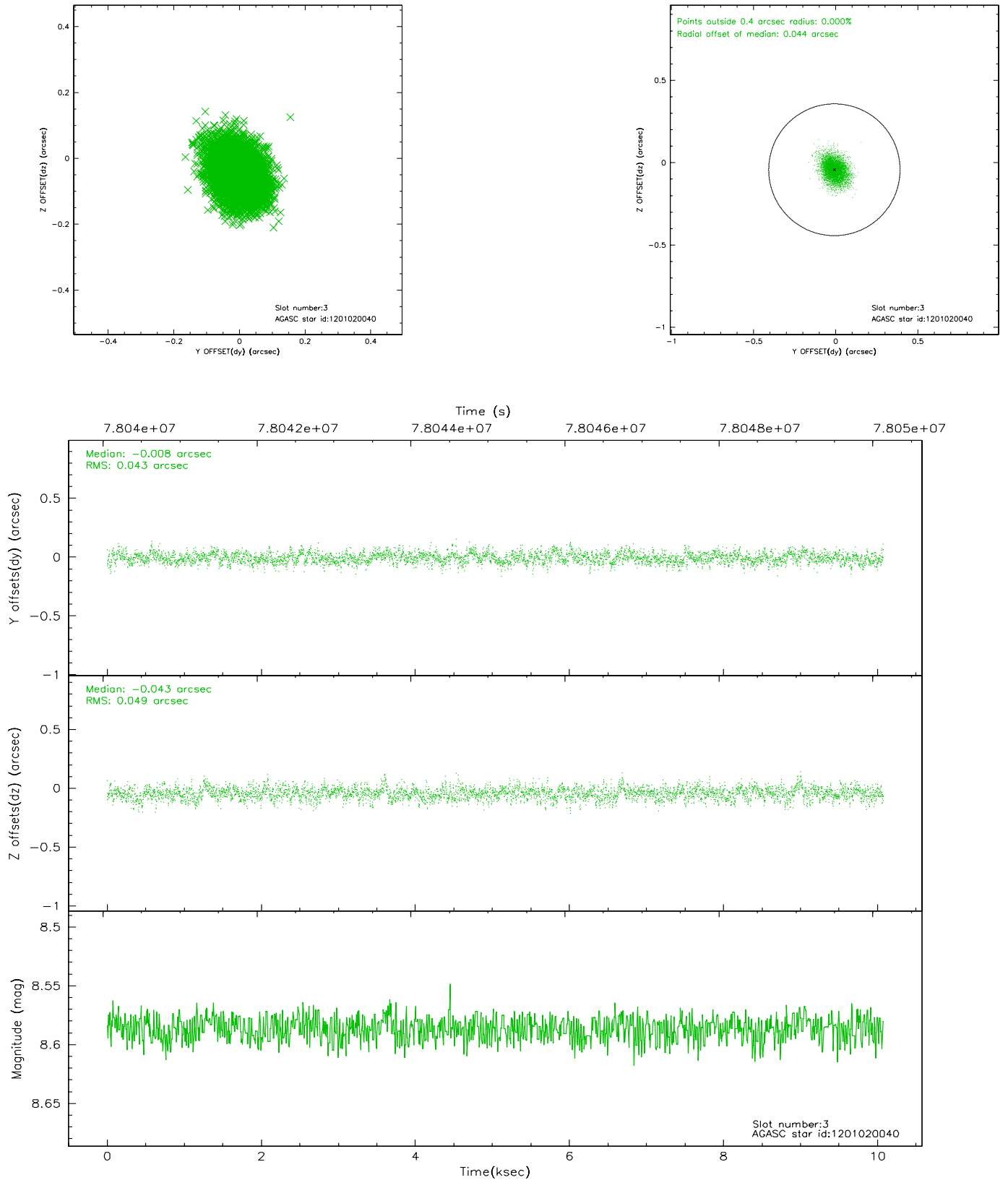


Slot Statistics

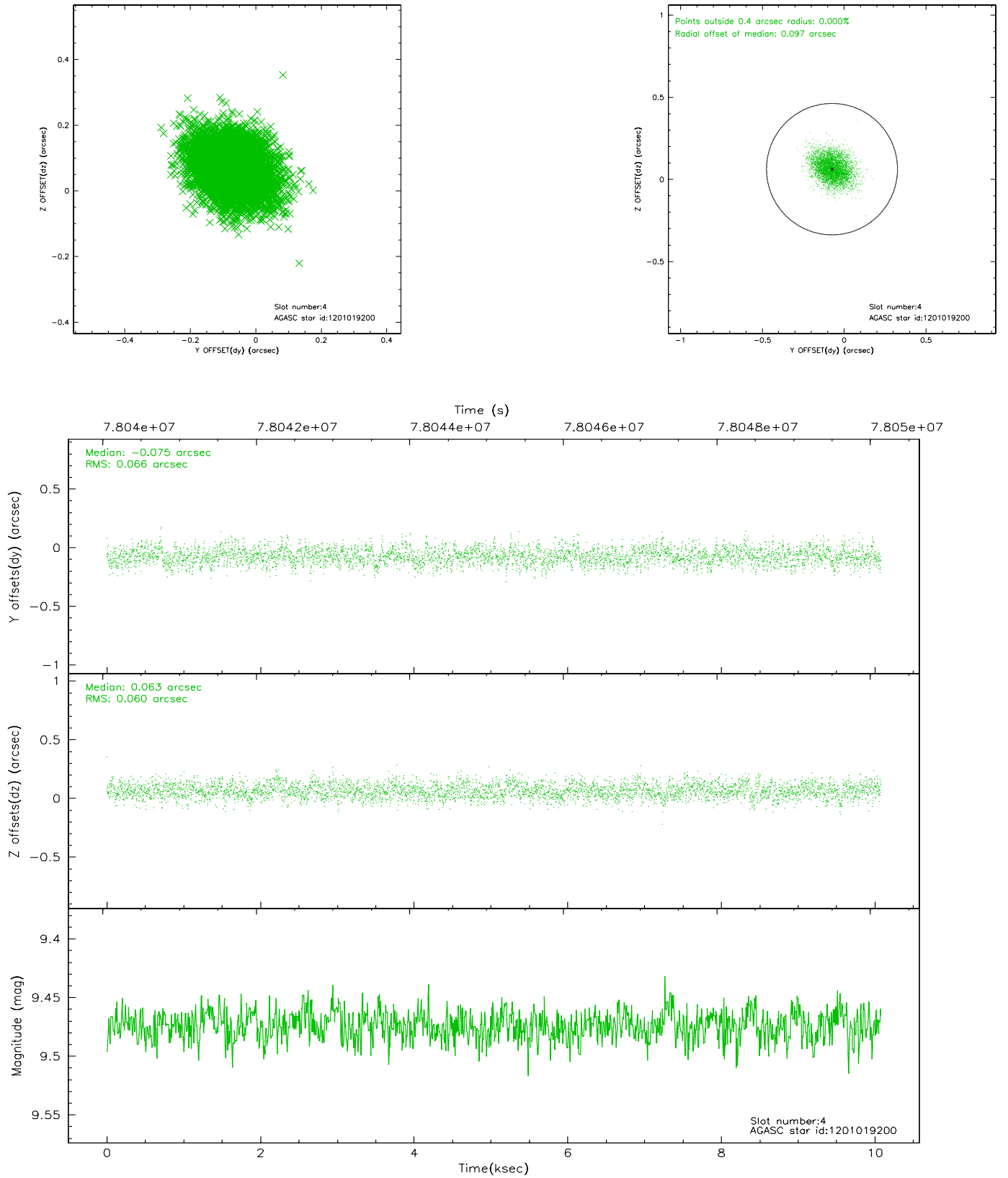
slot	status	id	mag	n_pts	med_dy	med_dz	dr1	dr2	ra	dec	mean_y	mean_z
0	FID	HRC-S-1	6.95	2458	0.125	-0.102	0.008	0.014	0.000000	0.000000	-1155.91	-452.40
1	FID	HRC-S-3	6.98	2458	0.135	-0.096	0.010	0.017	0.000000	0.000000	-1159.06	576.95
2	FID	HRC-S-4	6.92	2458	0.128	-0.098	0.006	0.009	0.000000	0.000000	1241.91	579.84
3	GUIDE	1201020040	8.59	4913	-0.008	-0.043	0.068	0.115	85.379163	-68.879396	-198.55	-1606.36
4	GUIDE	1201019200	9.47	4913	-0.075	0.063	0.094	0.154	84.213591	-68.777384	1346.59	-1815.80
5	GUIDE	1201406992	9.27	4912	0.061	-0.061	0.081	0.136	83.682859	-69.471866	1731.31	746.60
6	GUIDE	1200885760	9.47	4911	-0.088	0.080	0.096	0.155	83.723637	-68.777667	1981.02	-1739.98
7	GUIDE	1201020088	10.59	4911	0.105	-0.038	0.141	0.231	86.319248	-68.997756	-1446.36	-1286.69

2.4 Star Slots

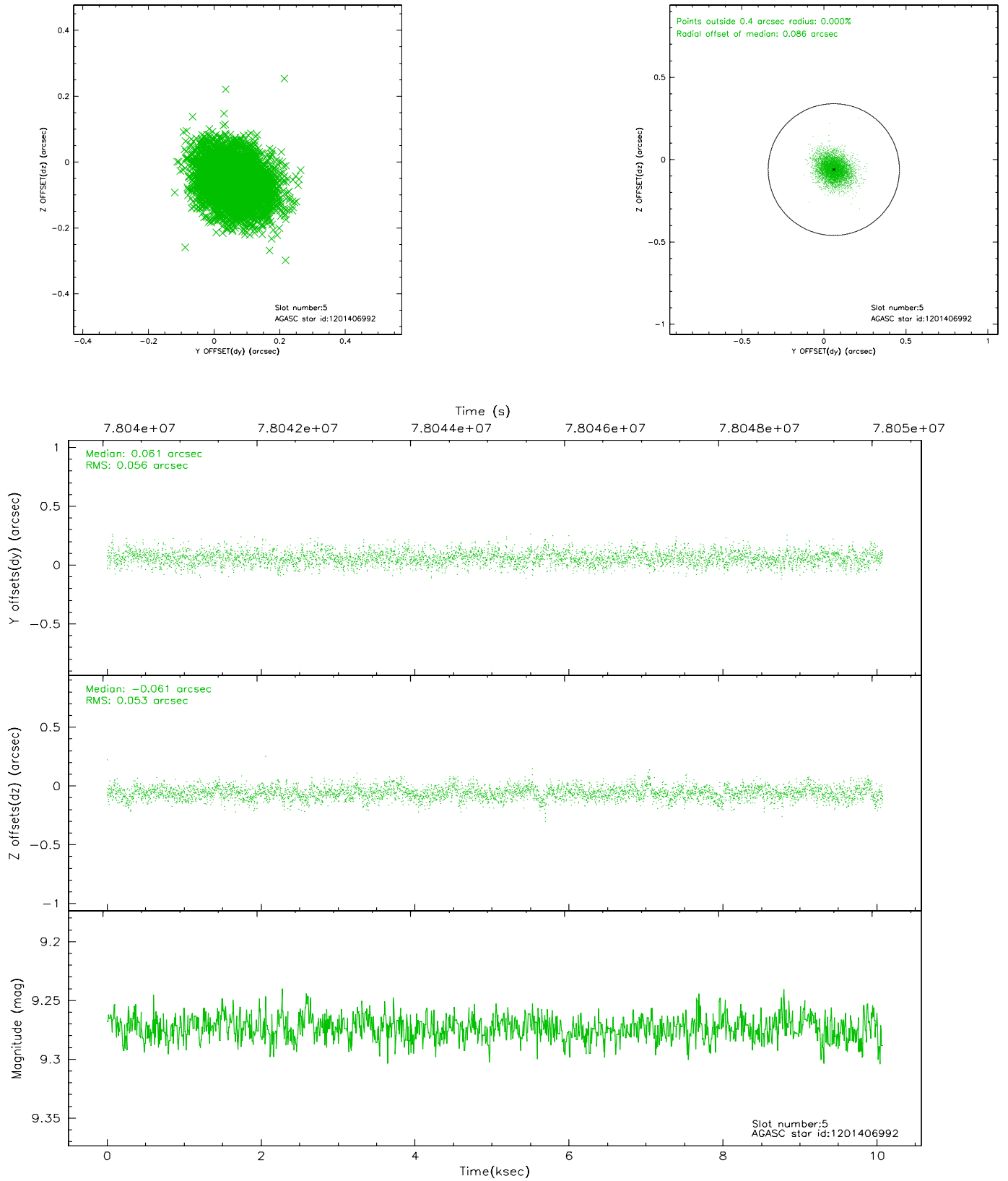
2.4.1 Slot 3



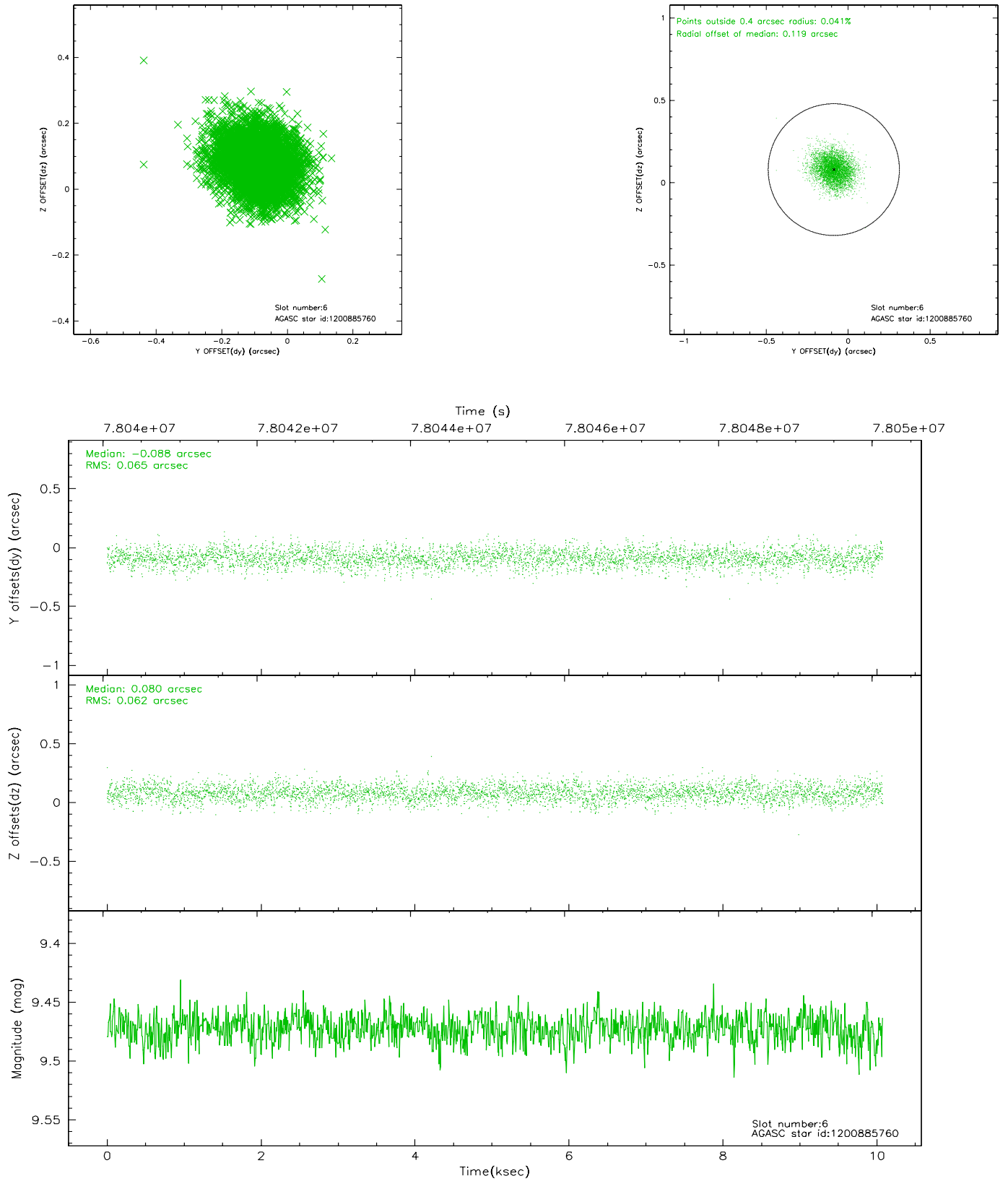
2.4.2 Slot 4



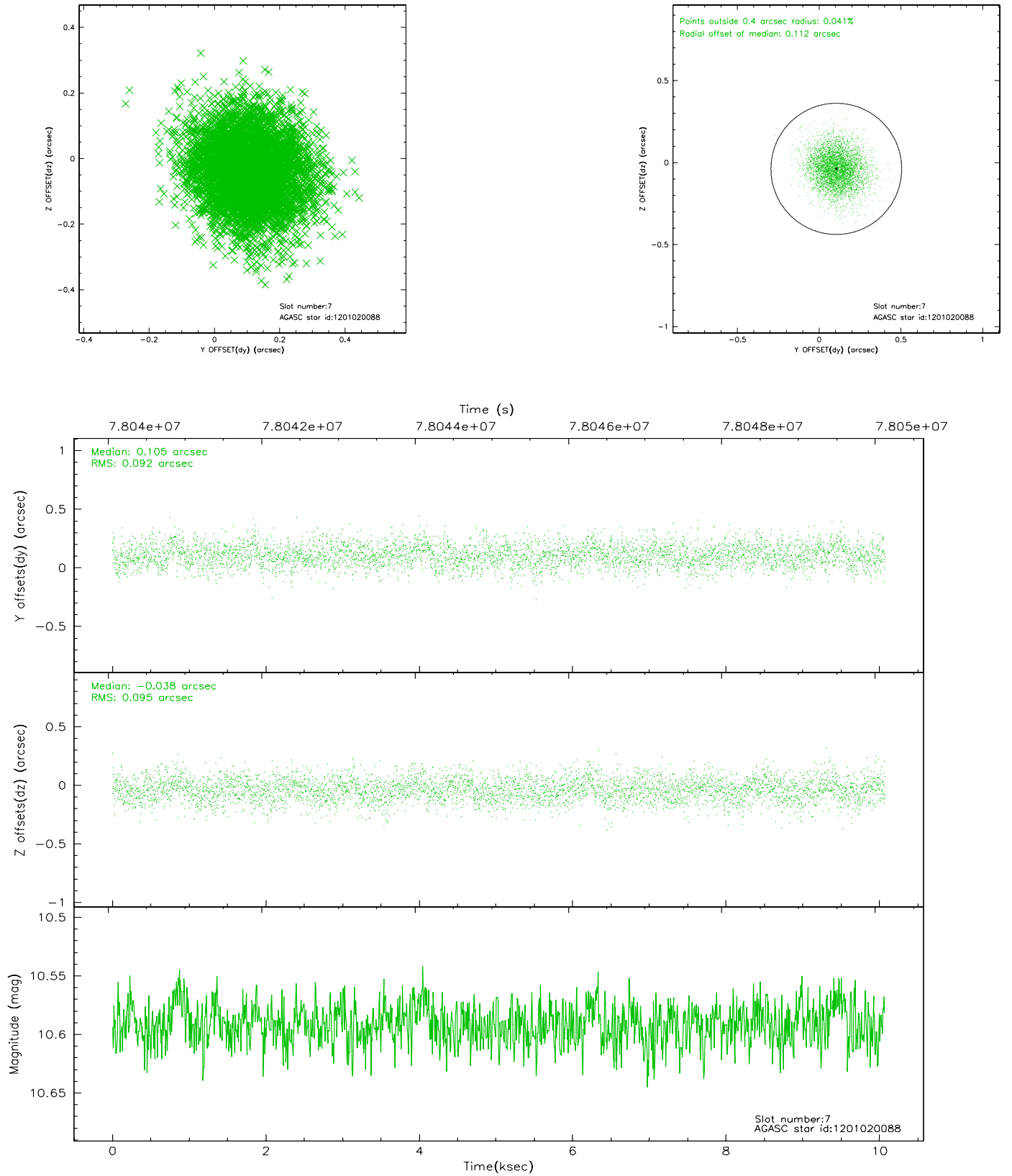
2.4.3 Slot 5



2.4.4 Slot 6

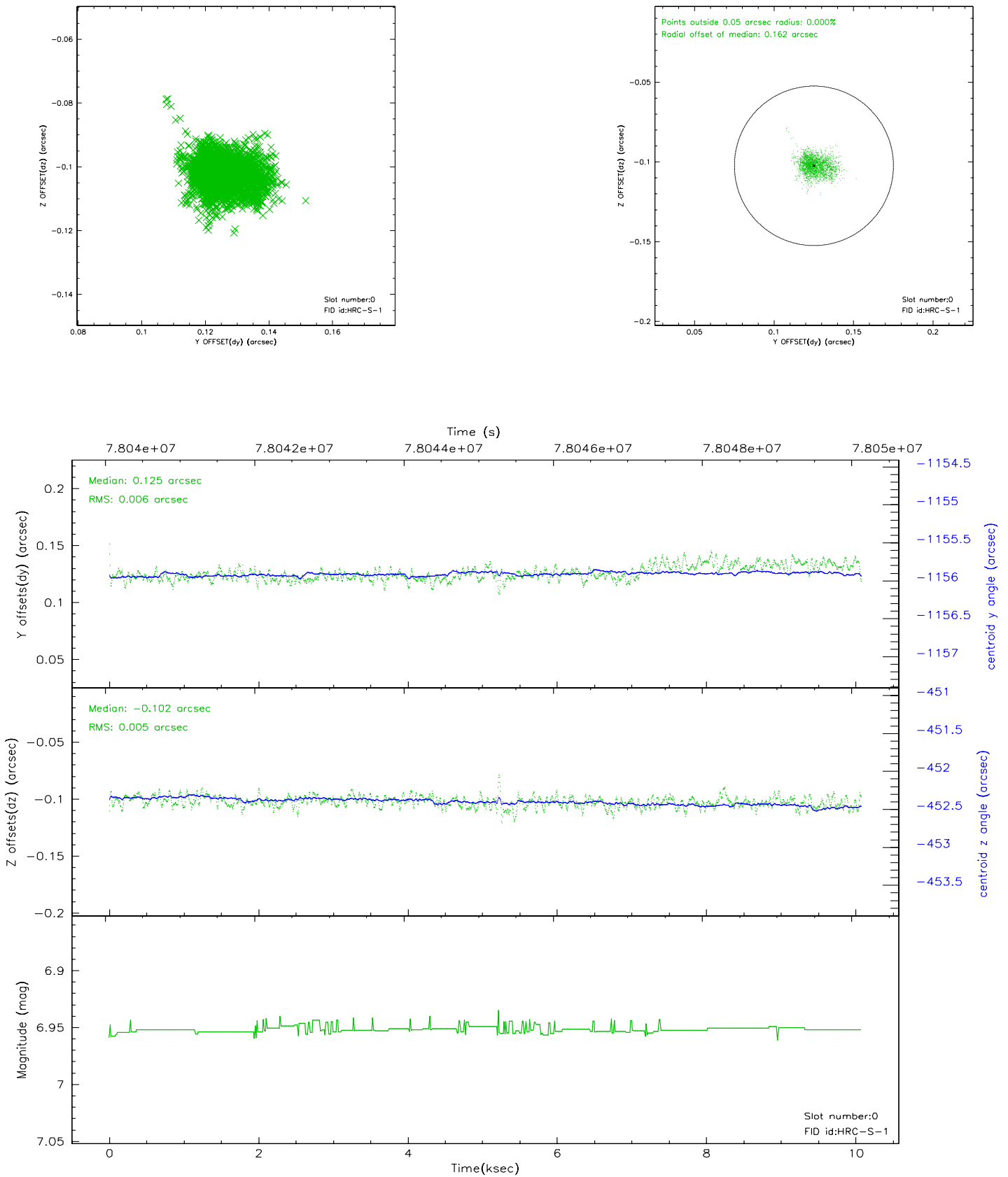


2.4.5 Slot 7

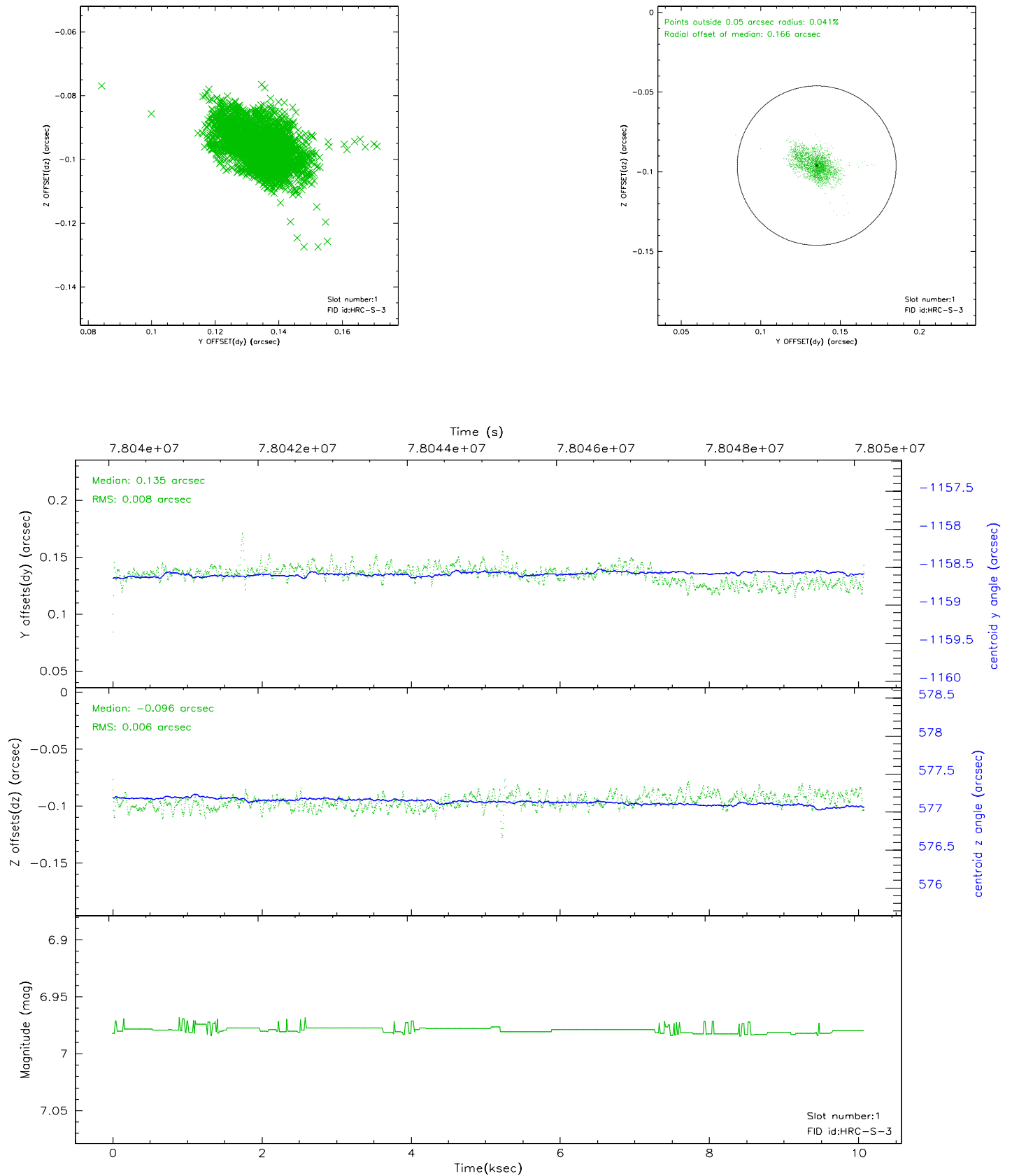


2.5 FID Slots

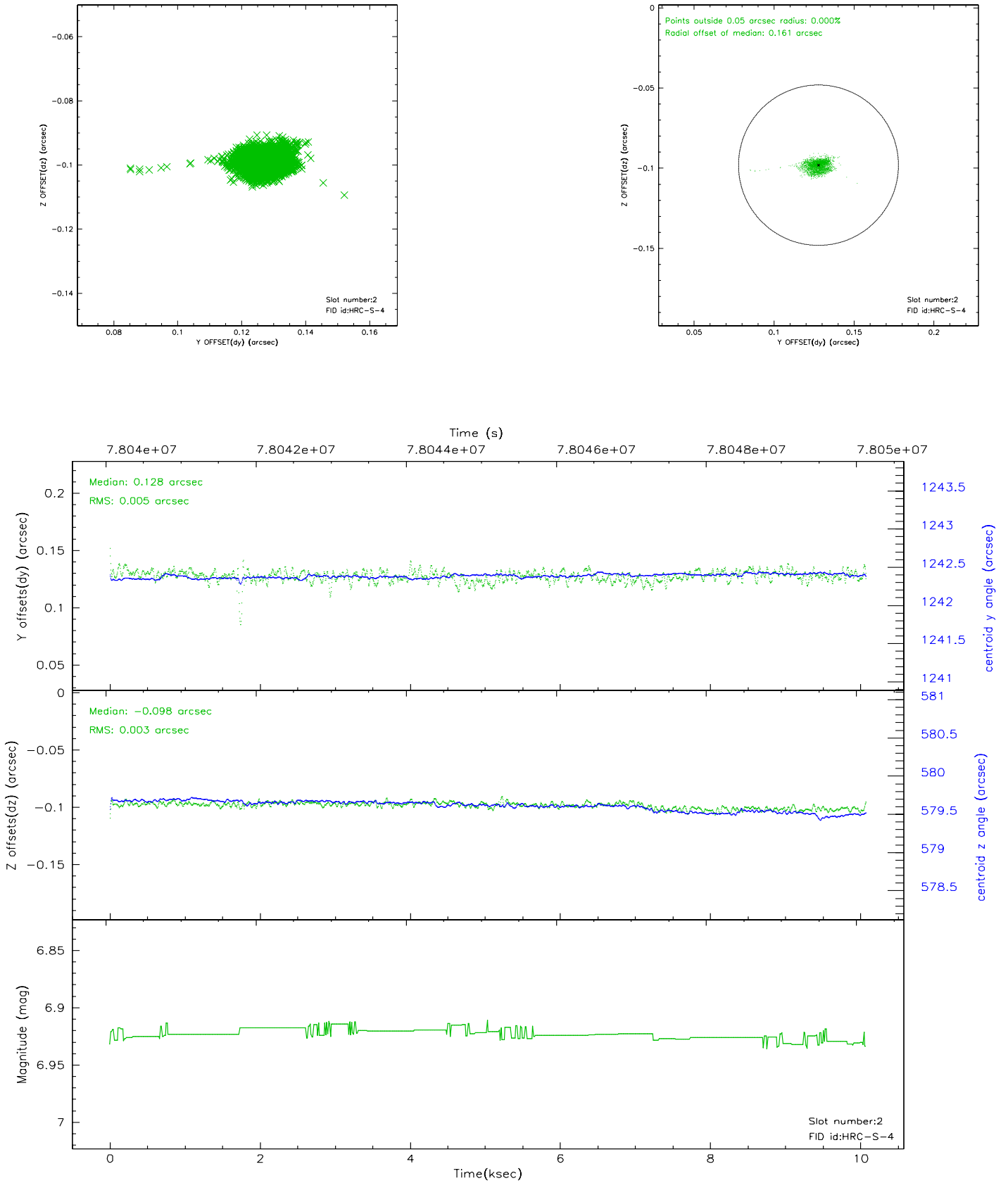
2.5.1 Slot 0



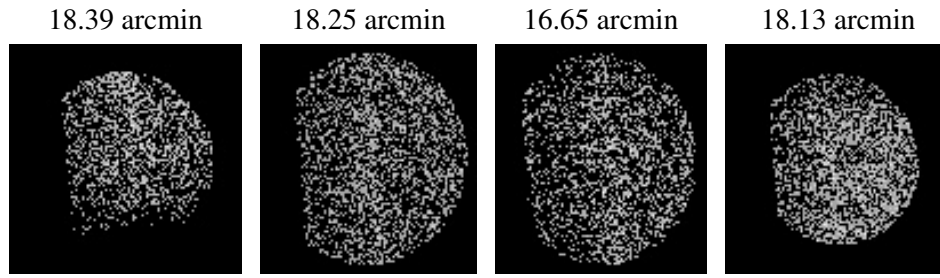
2.5.2 Slot 1



2.5.3 Slot 2



3 Point Sources



A Summary

A.1 Status

V&V Scientist	Jen Lauer
V&V Date (YYYY-MM-DD)	2007.05.27
V&V Edition	1
V&V Disposition and Status	OK
V&V Charge Time	9.738

A.2 Comments