

V&V Reference Report

L2 ASCDS Version : 8.4.5

Observation 1726 - L2 Version 4
Chandra X-Ray Center

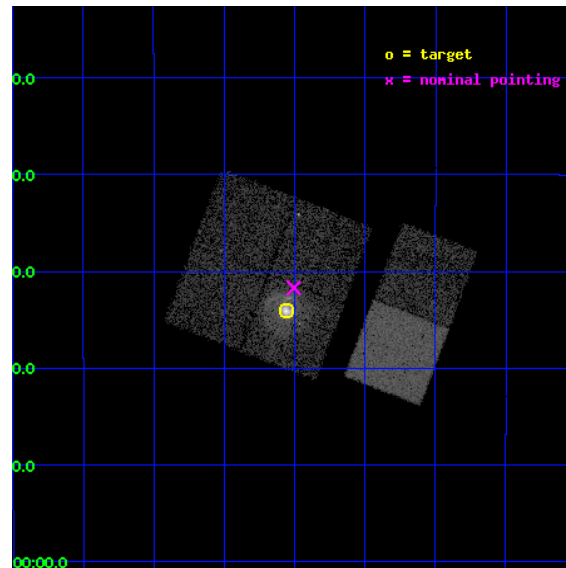
L2 Processing Date : Aug 28 2012

Contents

1	Front	2
2	OBI	3
2.1	OBI	3
2.1.1	Images	3
2.1.2	Bias	3
2.1.3	Parameters	4
2.1.4	Events	4
2.2	Compared Parameters	5
2.3	Aspect	6
2.4	Star Slots	9
2.4.1	Slot 3	9
2.4.2	Slot 4	10
2.4.3	Slot 5	11
2.4.4	Slot 6	12
2.4.5	Slot 7	13
2.5	FID Slots	14
2.5.1	Slot 0	14
2.5.2	Slot 1	15
2.5.3	Slot 2	16
A	Summary	17
A.1	Status	17
A.2	Comments	17

1 Front

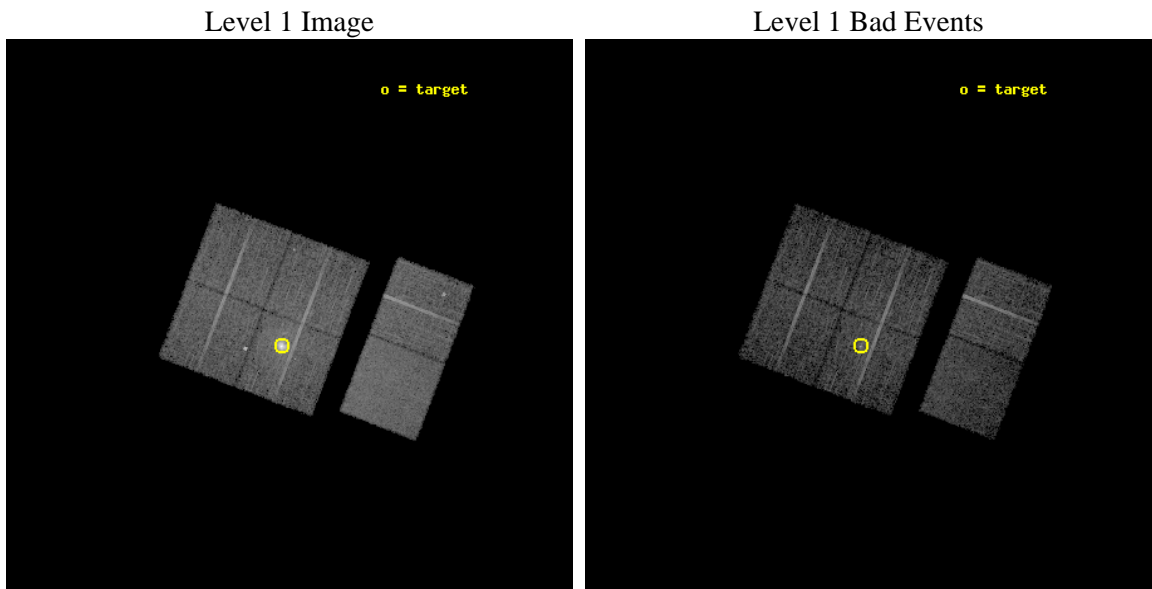
seq_num	590179	Sequence number
obs_id	1726	Observation id
title	HRC RESPONSE TO CONTINUUM SOURCE.	Proposal title
observer	Dr. CXC Calibration	Principal investigator
object	G21.5-0.9 [Chip I3, T=120, Offsets=-2,0,2]	Source name
dtcycle	0	
cycle	P	events from which exps? Prim/Second/Both
ra_targ	278.389583	Observer's specified target RA [deg]
dec_targ	-10.568528	Observer's specified target Dec [deg]
ra_nom	278.37629094244	Nominal RA [deg]
dec_nom	-10.528436646802	Nominal Dec [deg]
roll_nom	110.90722727202	Nominal Roll [deg]
revision	4	Processing version of data
ontime	7663.8923404068	Sum of GTIs [s]
livetime	7566.8475209506	Livetime [s]
ontime0	7663.7692204118	Sum of GTIs [s]
ontime1	7663.8102604151	Sum of GTIs [s]
ontime2	7663.8513004184	Sum of GTIs [s]
ontime3	7663.8923404068	Sum of GTIs [s]
ontime6	7663.9744204134	Sum of GTIs [s]
ontime7	7663.9333804101	Sum of GTIs [s]
l2events	71628	Number of level 2 events



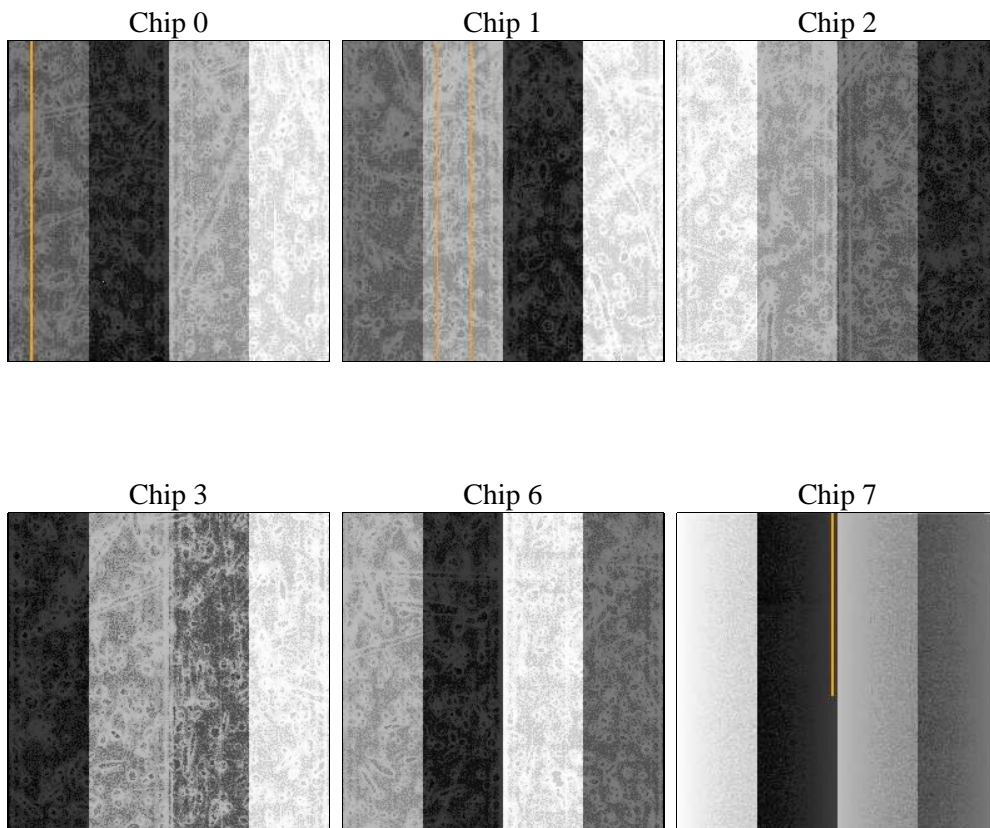
2 OBI

2.1 OBI

2.1.1 Images



2.1.2 Bias



2.1.3 Parameters

obi_num	0	Obi number	sched_exp_time	8000.000000	[s] Scheduled observation exposure time
ascdsver	8.4.5	Processing system revision	ontime	7663.8923404068	Sum of GTIs [s]
caldsver	4.5.1.1	 	ontime0	7663.7692204118	Sum of GTIs [s]
date	2012-08-28T04:56:22	Date and time of file creation	ontime1	7663.8102604151	Sum of GTIs [s]
revision	4	Processing version of data	ontime2	7663.8513004184	Sum of GTIs [s]
			ontime3	7663.8923404068	Sum of GTIs [s]
			ontime6	7663.9744204134	Sum of GTIs [s]
			ontime7	7663.9333804101	Sum of GTIs [s]
			l1events	310103	Number of level 1 events

2.1.4 Events

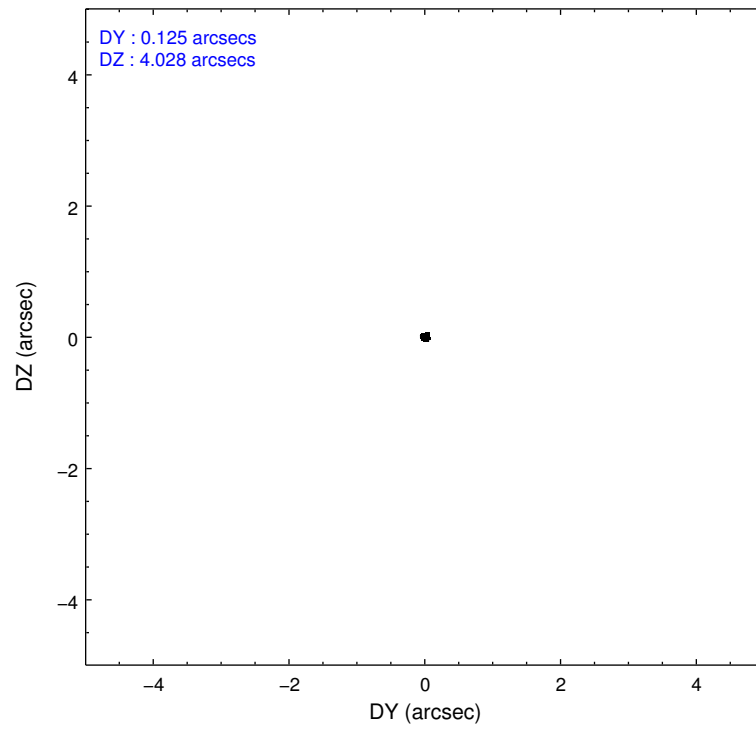
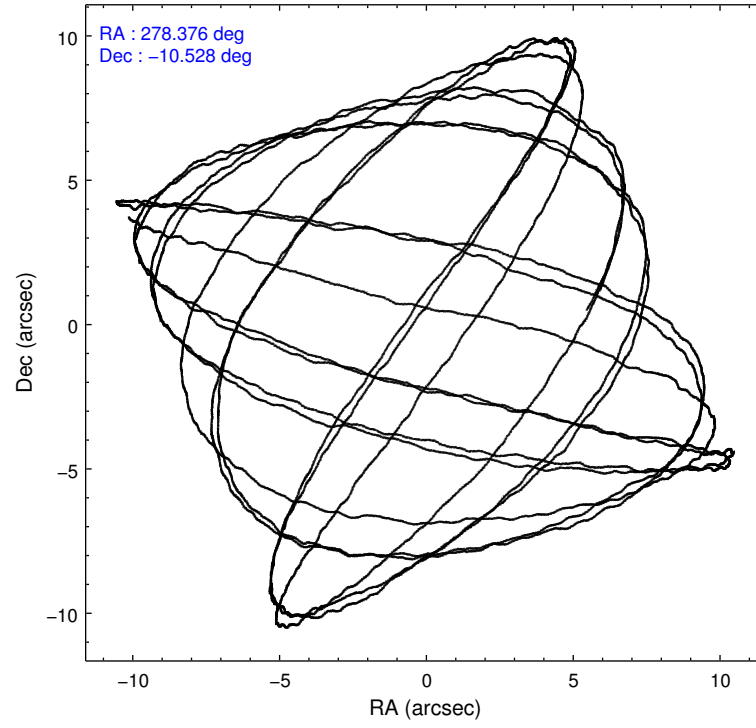
	ccd 0	ccd 1	ccd 2	ccd 3	ccd 6	ccd 7		ccd 0	ccd 1	ccd 2	ccd 3	ccd 6	ccd 7
level 1 events	42460	43477	47452	71112	50688	54914	grade 0 events	2722	4262	3020	20183	3341	2254
rejected events	36691	35765	41256	41499	43974	31058		6%	9%	6%	28%	6%	4%
rejected %	86%	82%	86%	58%	86%	56%	grade 1 events	24	24	29	204	28	46
								0%	0%	0%	0%	0%	0%
							grade 2 events	1196	1216	1194	4289	1157	4854
								2%	2%	2%	6%	2%	8%
							grade 3 events	489	614	534	1545	575	2191
								1%	1%	1%	2%	1%	3%
							grade 4 events	467	608	523	1519	578	2174
								1%	1%	1%	2%	1%	3%
							grade 5 events	1465	1550	1371	1754	1927	5135
								3%	3%	2%	2%	3%	9%
							grade 6 events	898	1016	926	2087	1063	12393
								2%	2%	1%	2%	2%	22%
							grade 7 events	35199	34187	39855	39531	42019	25867
								82%	78%	83%	55%	82%	47%

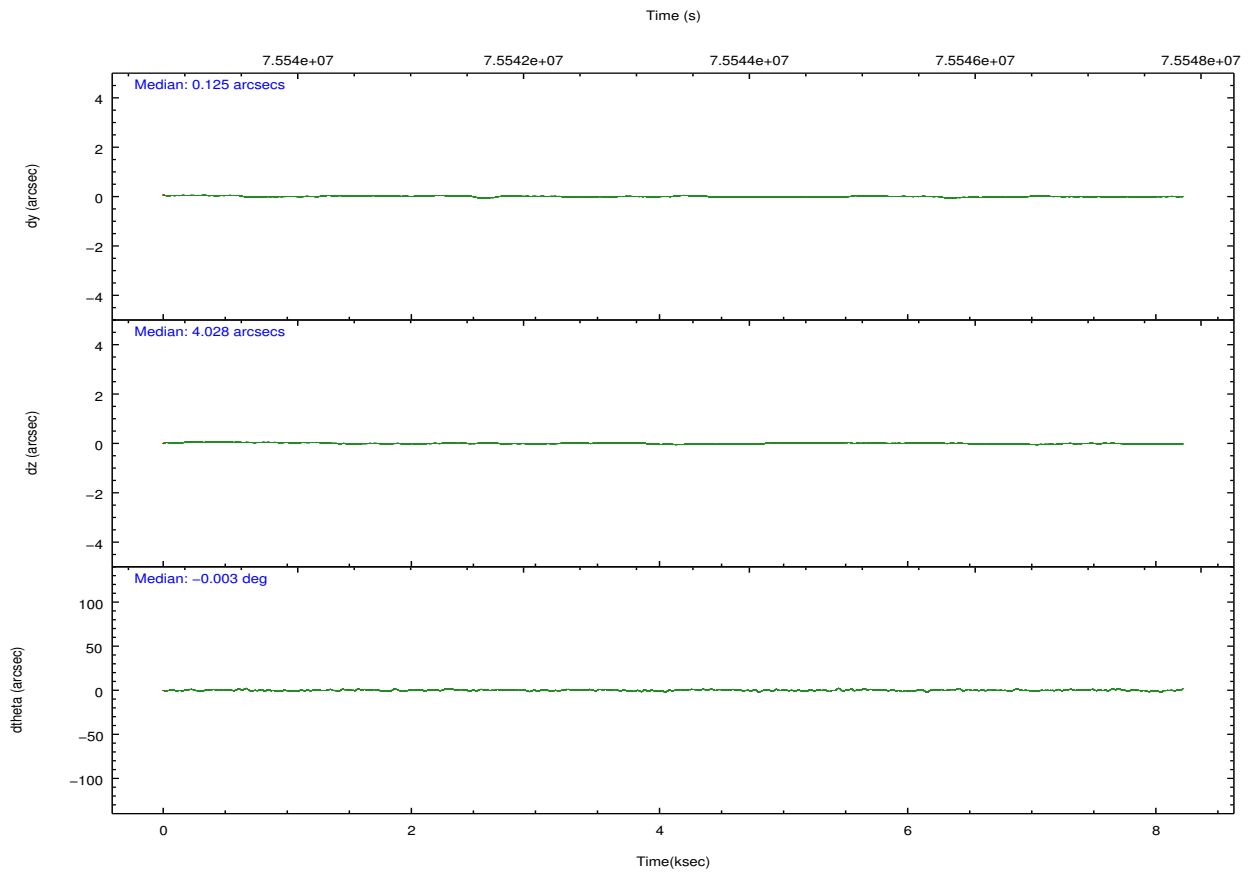
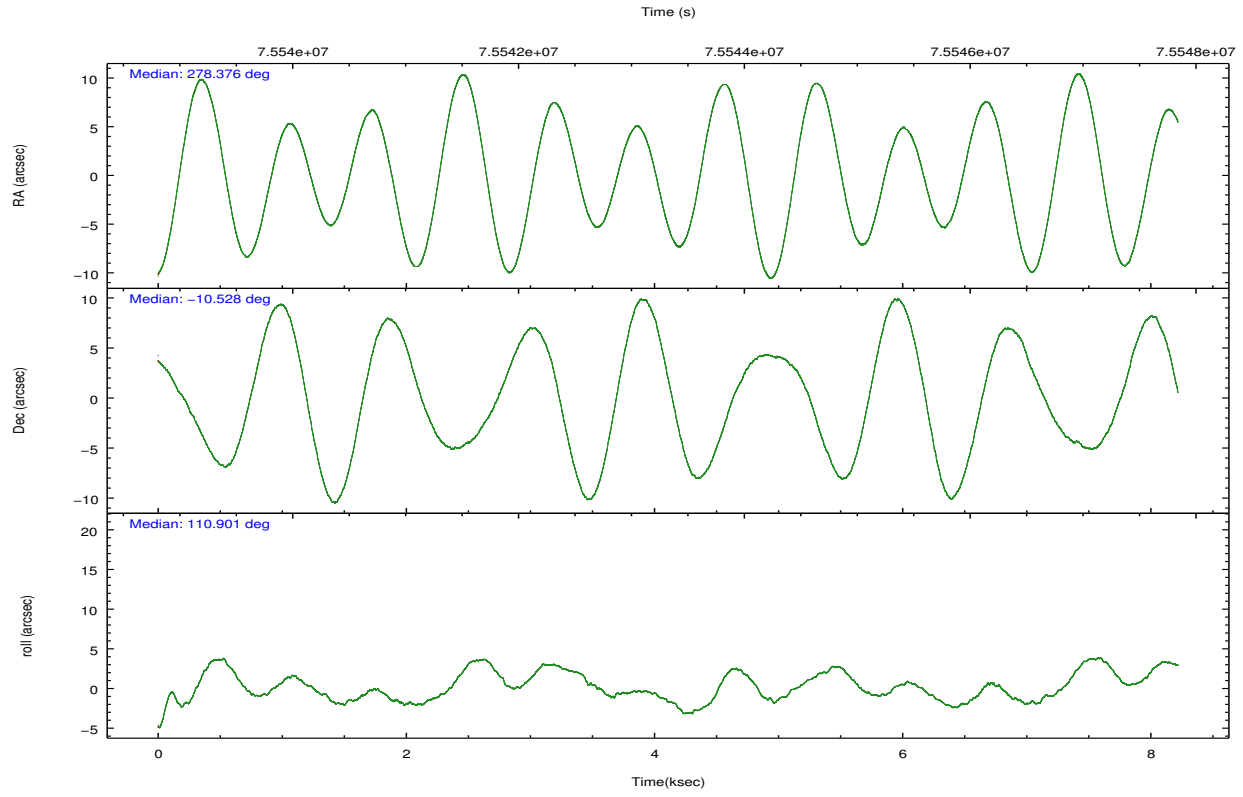
2.2 Compared Parameters

Parameter	Planned	Actual
Instrument	ACIS	ACIS
Detector	ACIS-012367	ACIS-012367
Grating	NONE	NONE
Data mode	FAINT	FAINT
Observation mode	POINTING	POINTING
[deg] Pointing RA	278.397962	278.3762909424392
[deg] Pointing Dec	-10.545994	-10.52843664680194
[deg] Pointing Roll	110.702504	110.9072272720178
[mm] SIM focus pos	-0.782348	-0.7809083437167272
[mm] SIM defocus	0	0.001439871863259334
[mm] SIM translation stage pos	-226.272463	-226.2707769332891
[mm] SIM translation stage offset	-7.32	-7.321676069640603
[s] Observation start time (MET)	75539435.184000	75539039.082267
Observation start date	2000-05-24T07:09:31	2000-05-24T07:03:59
[s] Observation end time (MET)	75547435.184000	75547574.257581
Observation end date	2000-05-24T09:22:51	2000-05-24T09:26:14
Read mode	TIMED	TIMED

Parameter	Planned	Actual
Obspar format version number	7	7
Obspar file type	PREDICTED	ACTUAL
Obspar update status	NONE	UPDATED
Number of optional ACIS chips dropped	0	0
On-chip summing requested	N	N
Subarray requested	NONE	NONE
Alternating exposures requested	N	N
[s] Primary exposure time	0.000000	3.2

2.3 Aspect



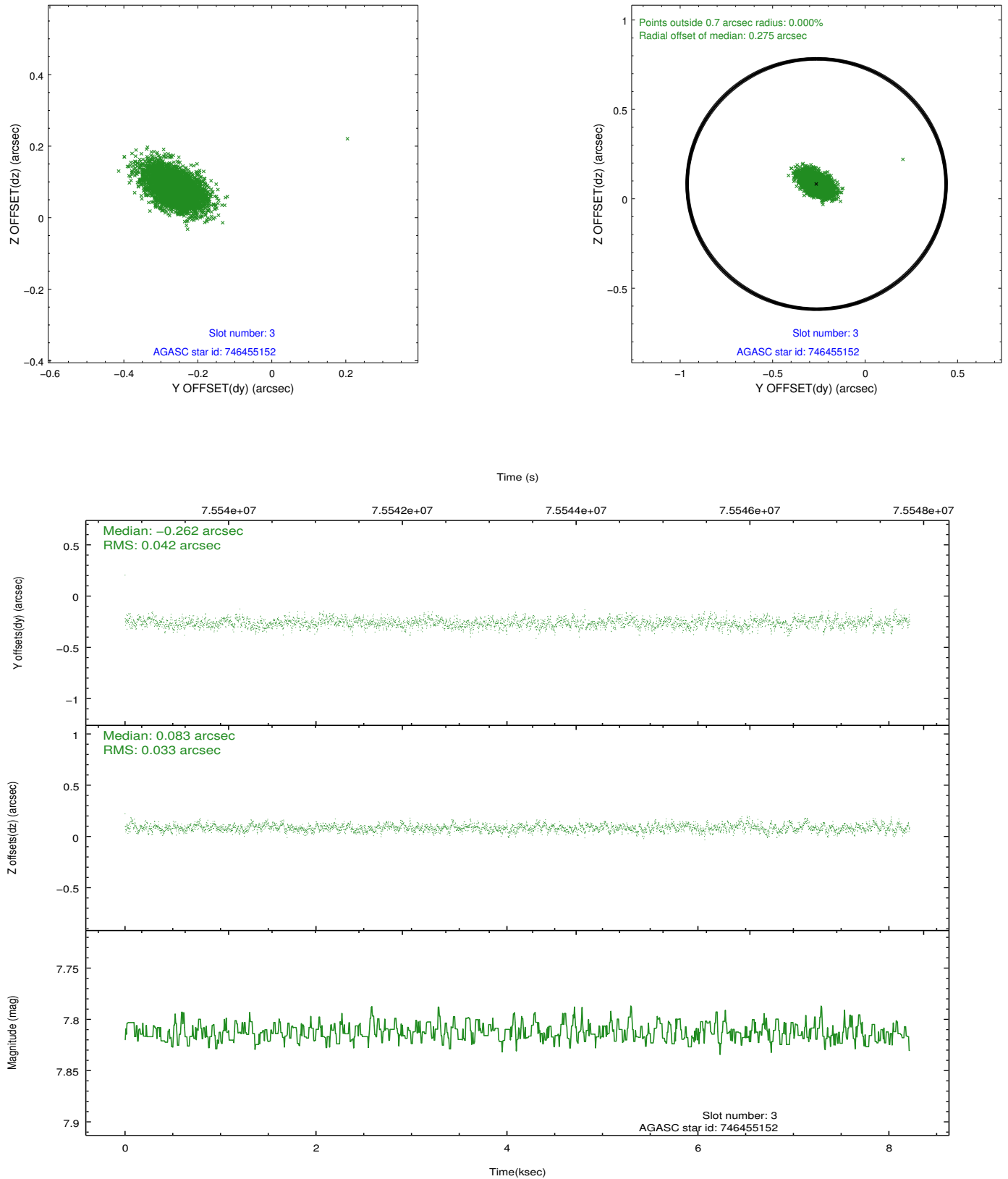


Slot Statistics

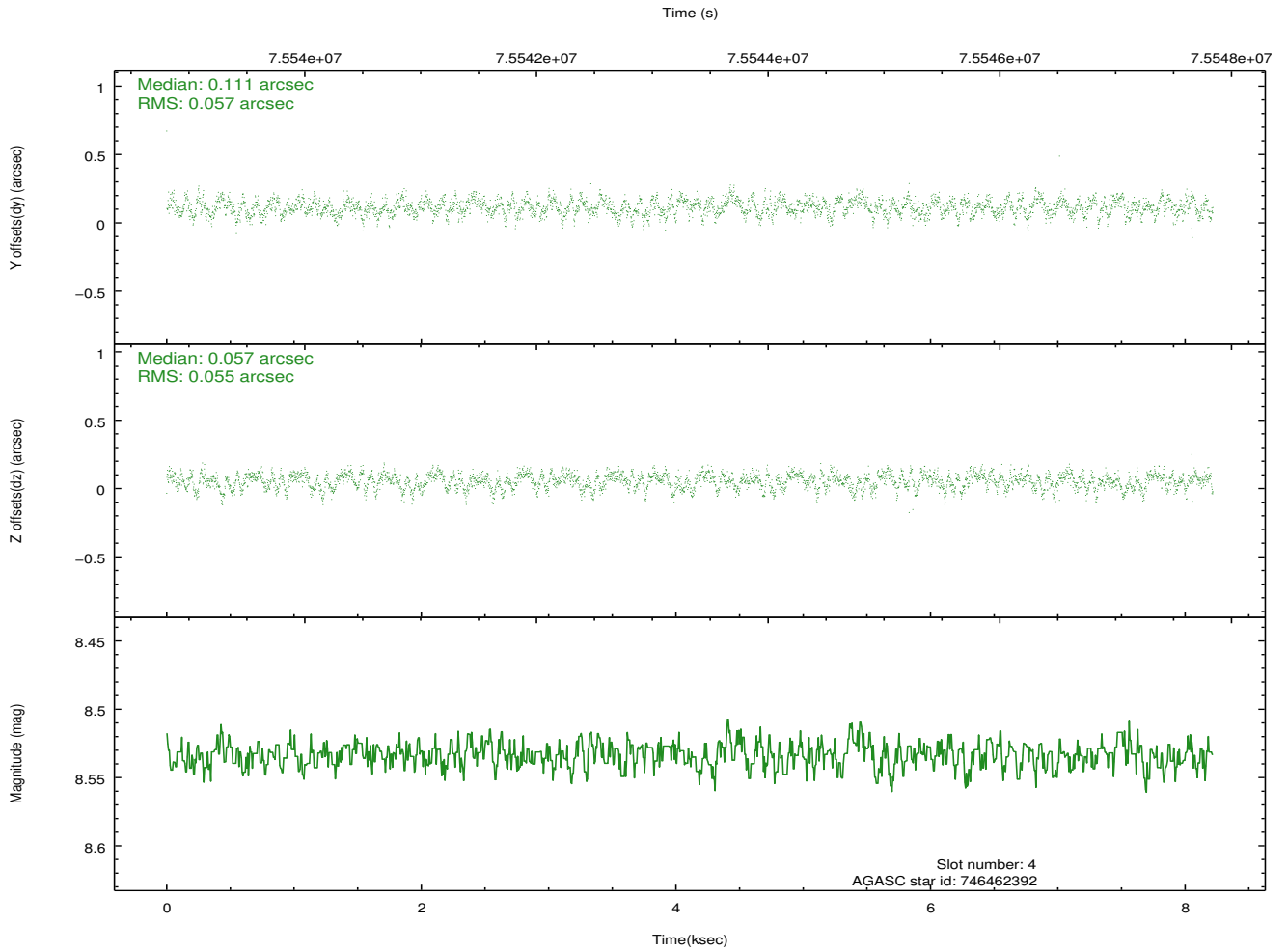
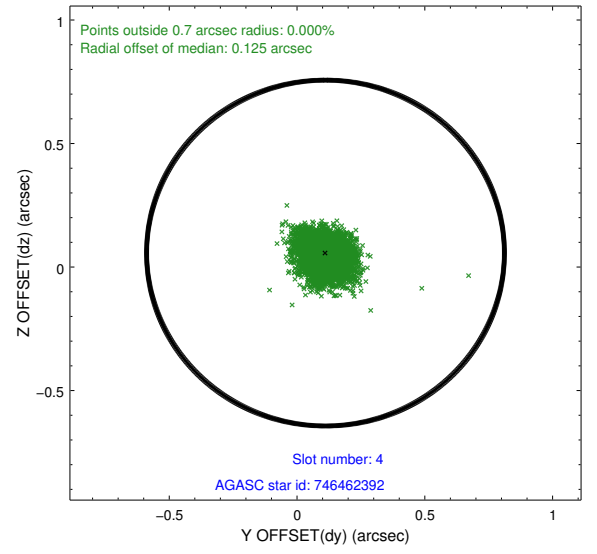
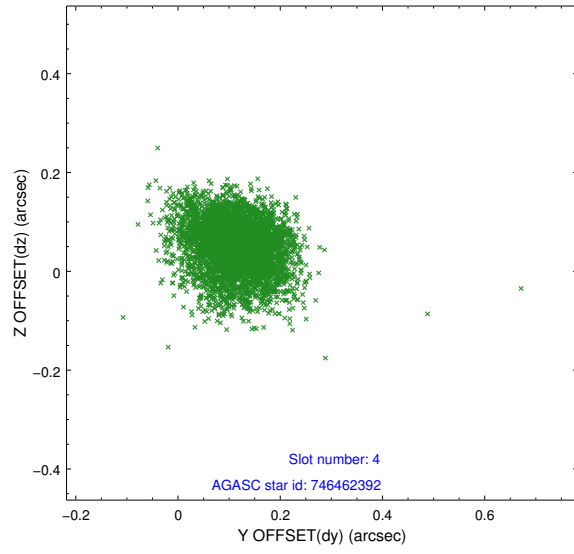
slot	status	id	mag	n_pts	med_dy	med_dz	dr1	dr2	ra	dec	mean_y	mean_z
0	FID	ACIS-I-2	7.17	2005	-0.030	-0.044	0.010	0.017	0.000000	0.000000	-754.96	-983.09
1	FID	ACIS-I-4	7.16	2005	-0.037	0.038	0.008	0.013	0.000000	0.000000	2158.72	922.75
2	FID	ACIS-I-5	7.23	2005	-0.035	0.075	0.010	0.015	0.000000	0.000000	-1807.56	920.42
3	GUIDE	746455152	7.81	4010	-0.262	0.083	0.055	0.094	278.447893	-9.976732	1853.89	-890.02
4	GUIDE	746462392	8.53	4010	0.111	0.057	0.084	0.133	279.038421	-10.890715	-1963.20	-1679.06
5	GUIDE	746455112	8.94	4009	0.071	0.090	0.089	0.144	278.266531	-10.703234	-366.10	634.44
6	GUIDE	746460328	9.81	4007	-0.091	0.018	0.118	0.190	278.603974	-9.898096	1922.94	-1507.77
7	GUIDE	746995400	9.61	4007	0.165	-0.244	0.112	0.185	278.078957	-11.289885	-2107.49	1999.44

2.4 Star Slots

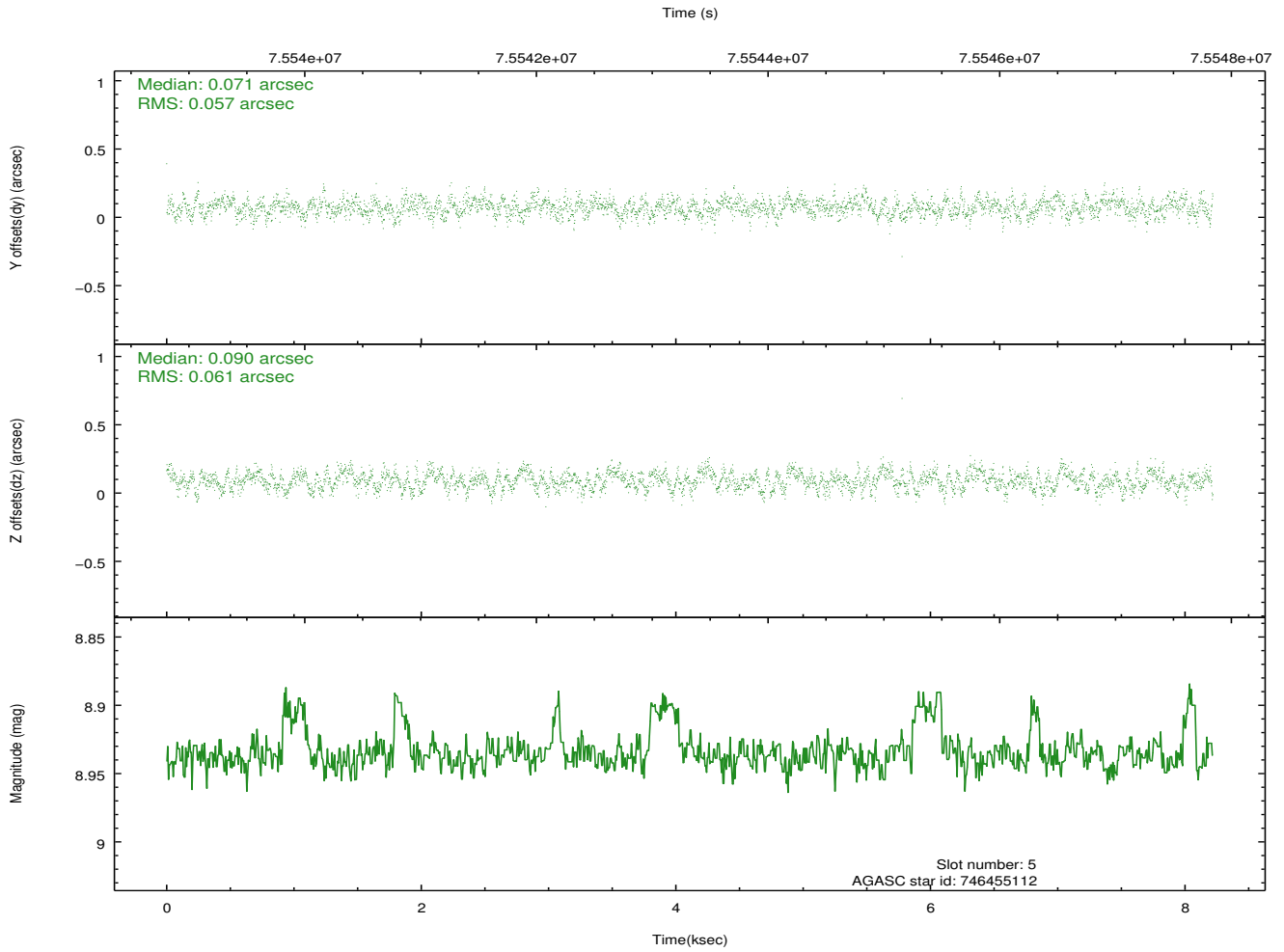
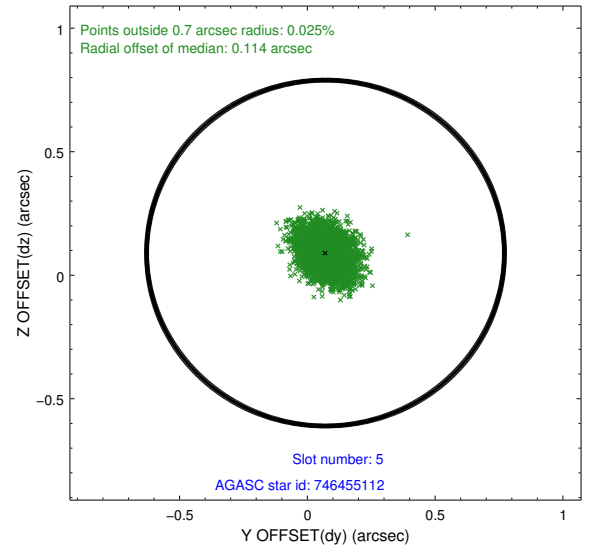
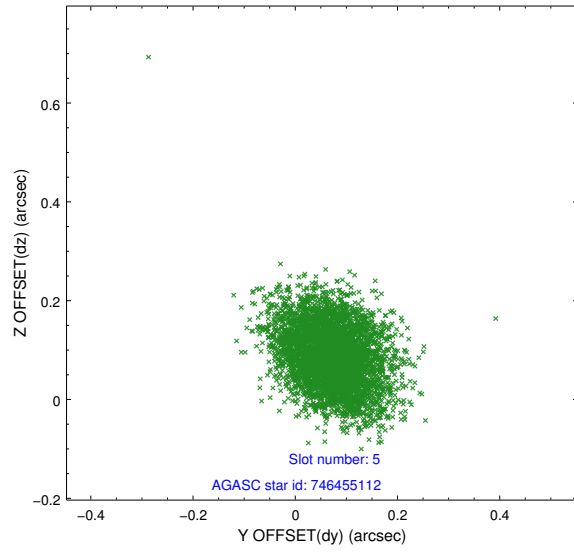
2.4.1 Slot 3



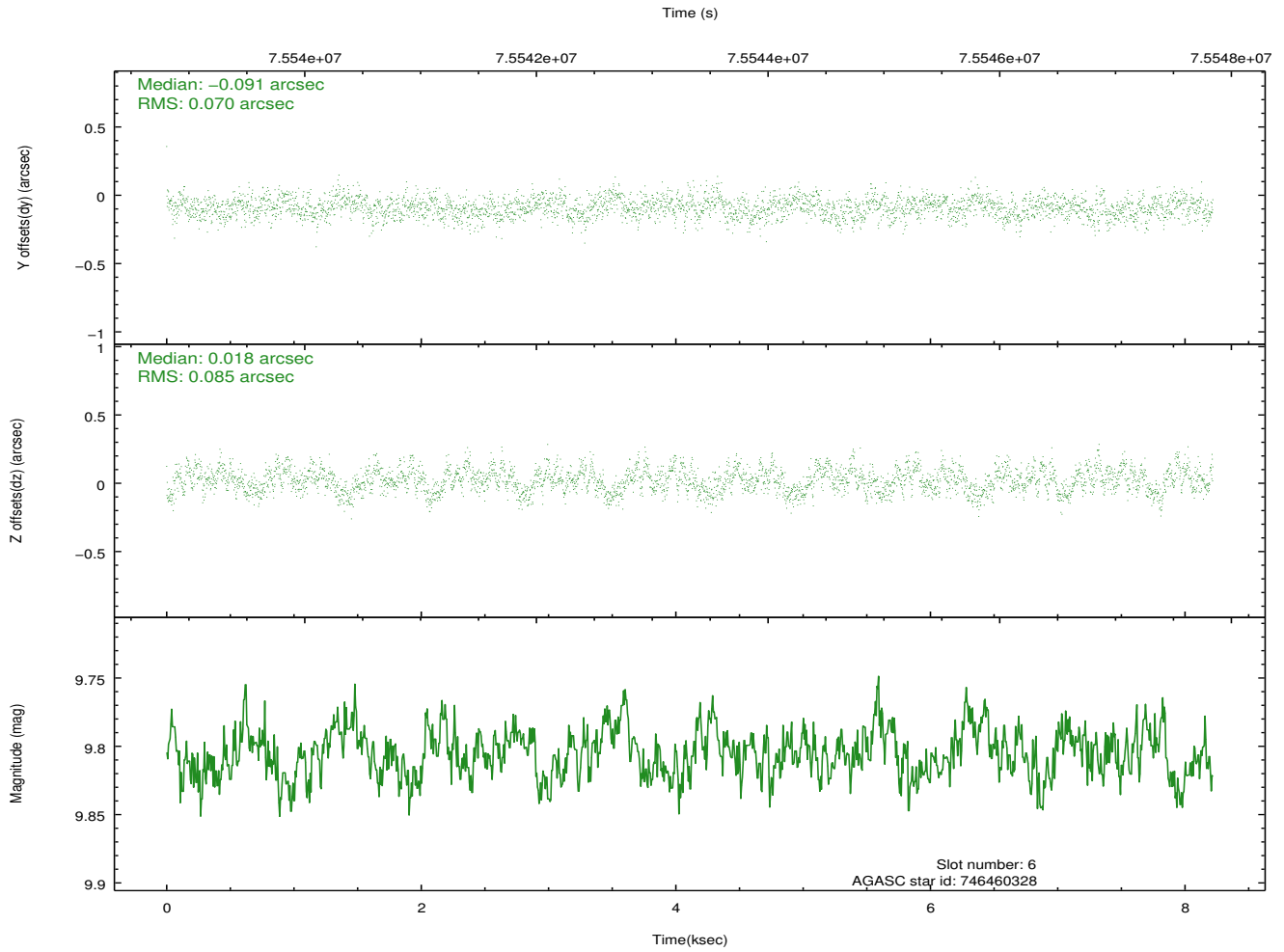
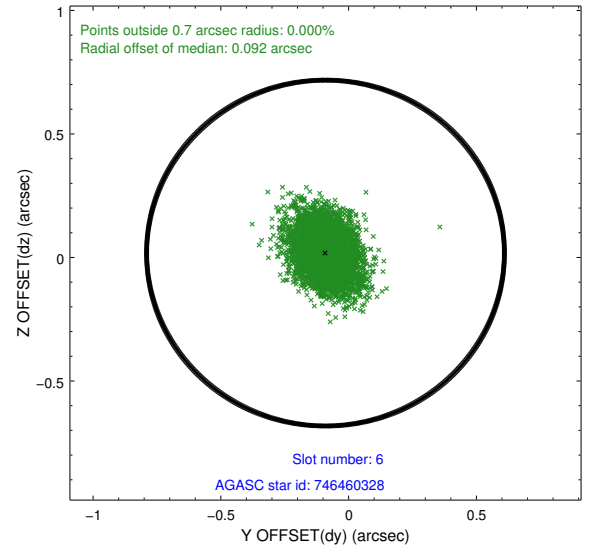
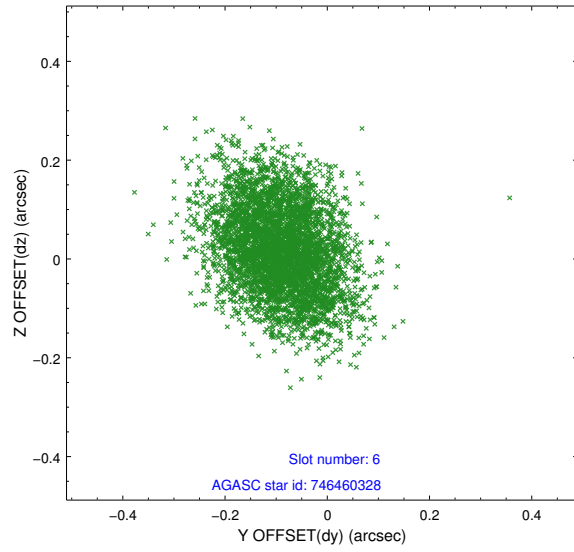
2.4.2 Slot 4



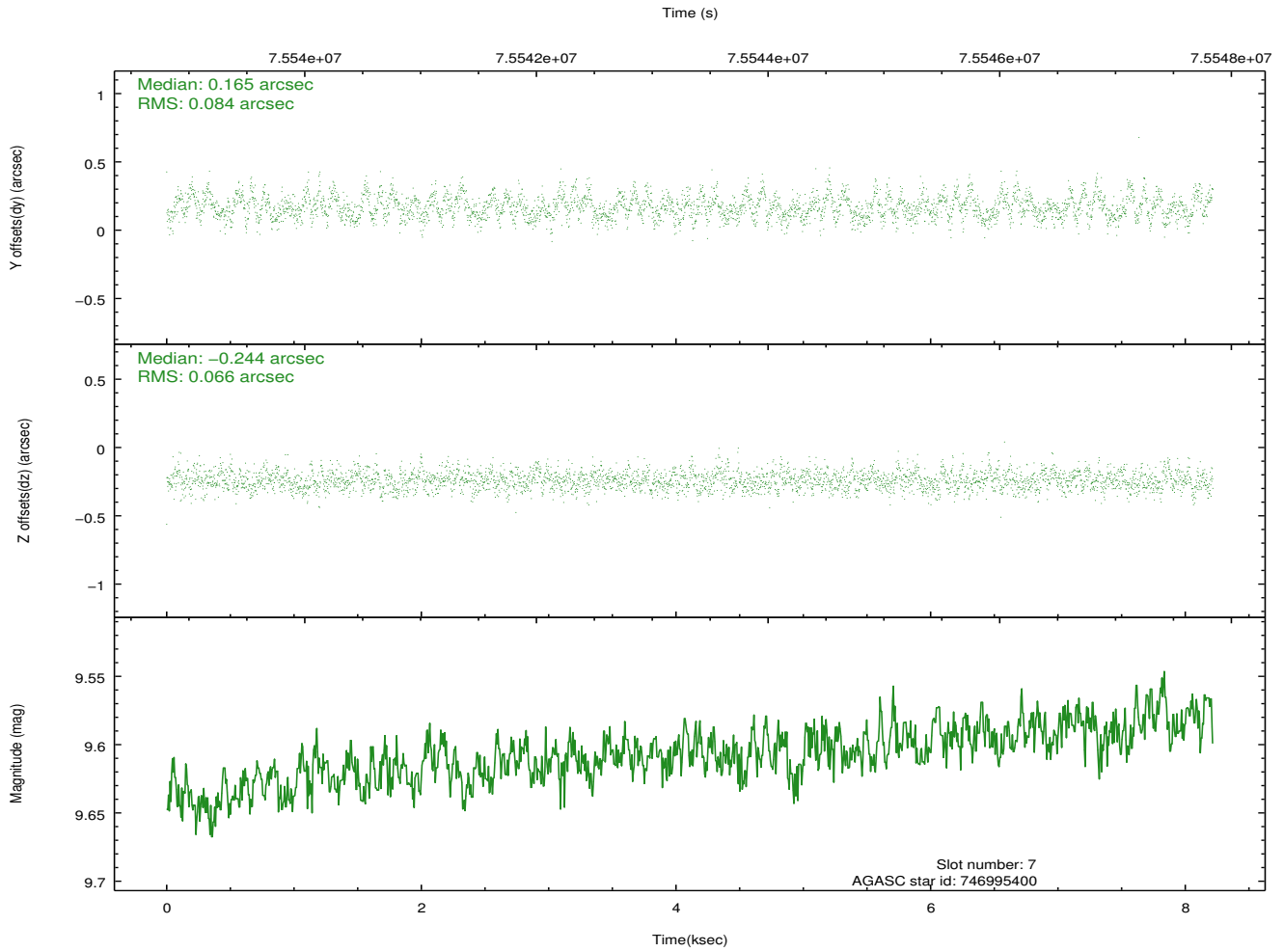
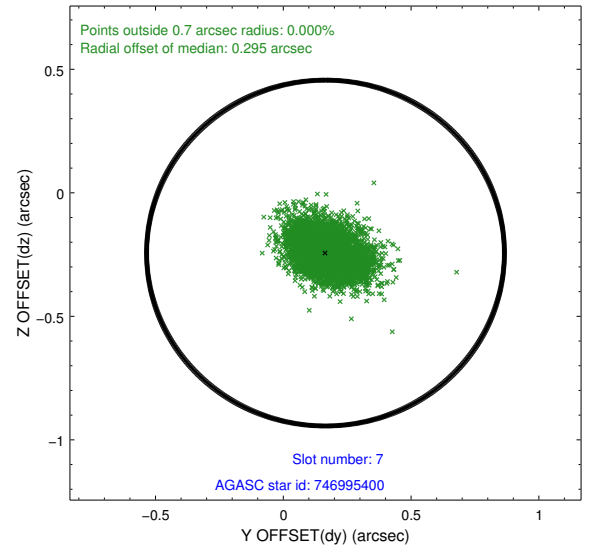
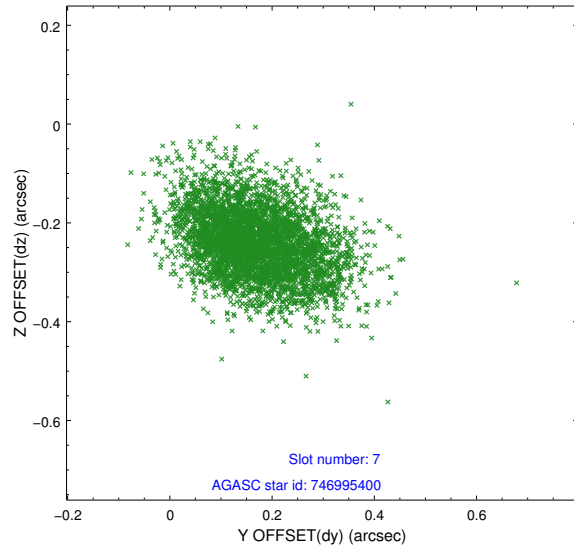
2.4.3 Slot 5



2.4.4 Slot 6

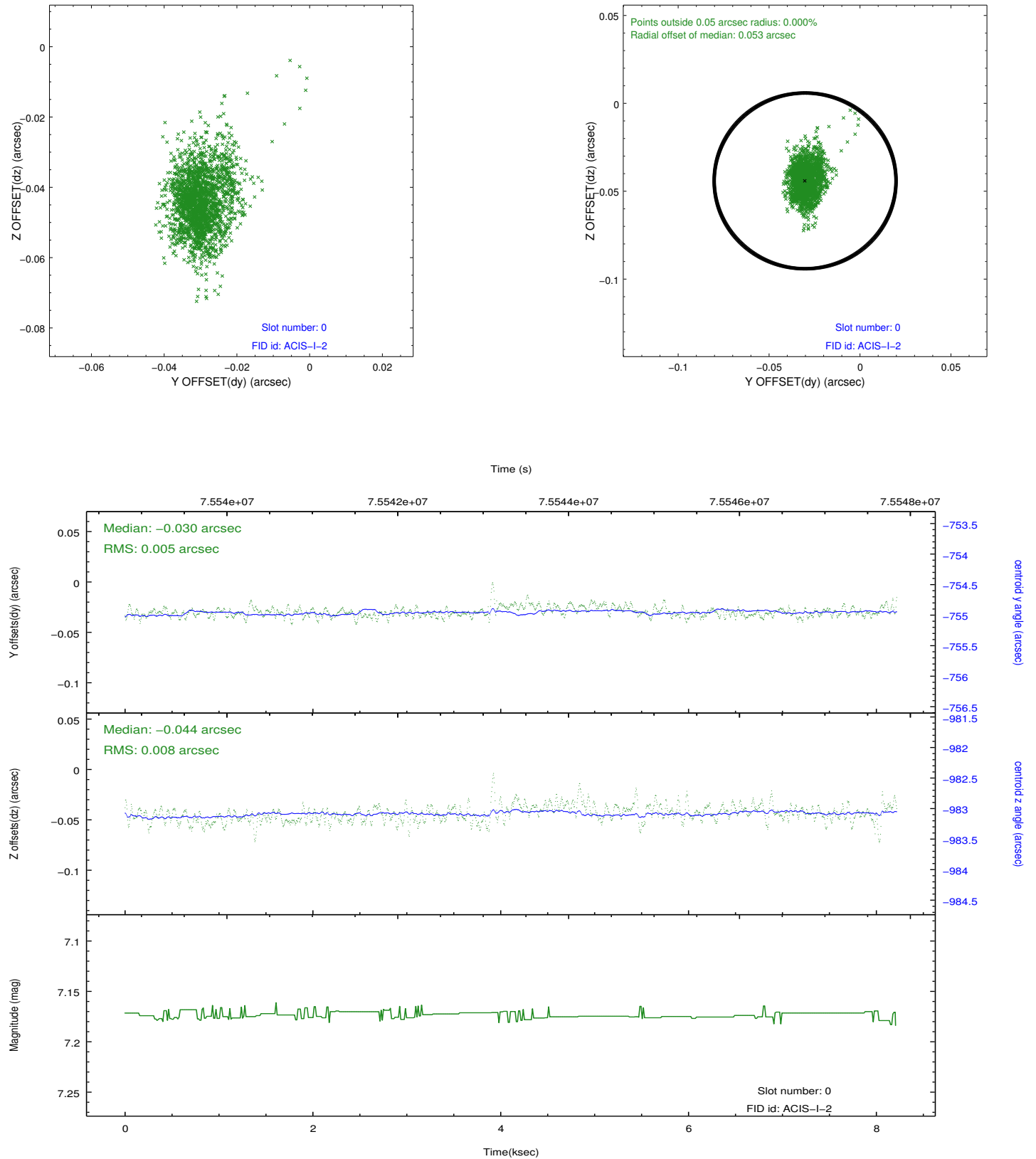


2.4.5 Slot 7

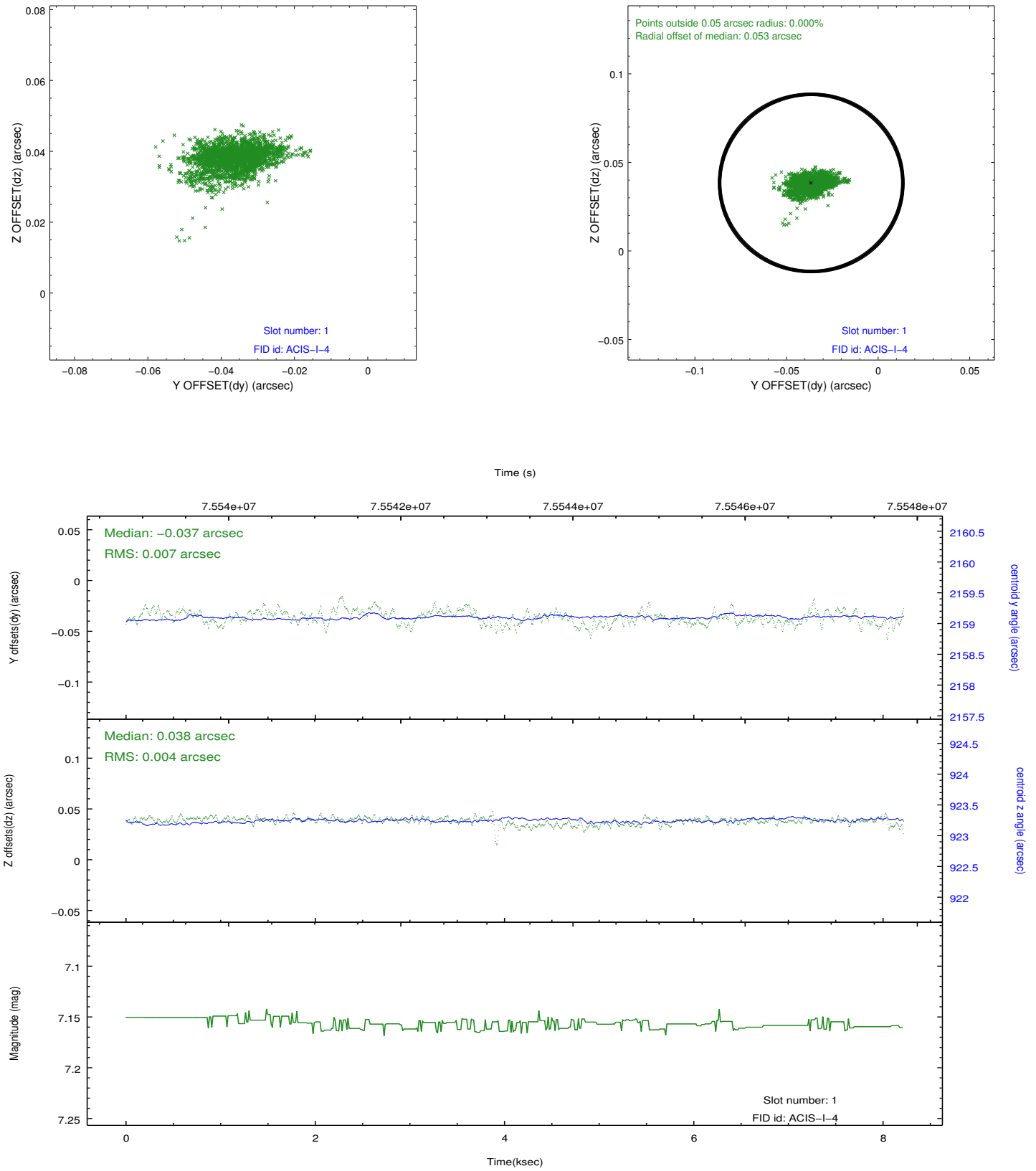


2.5 FID Slots

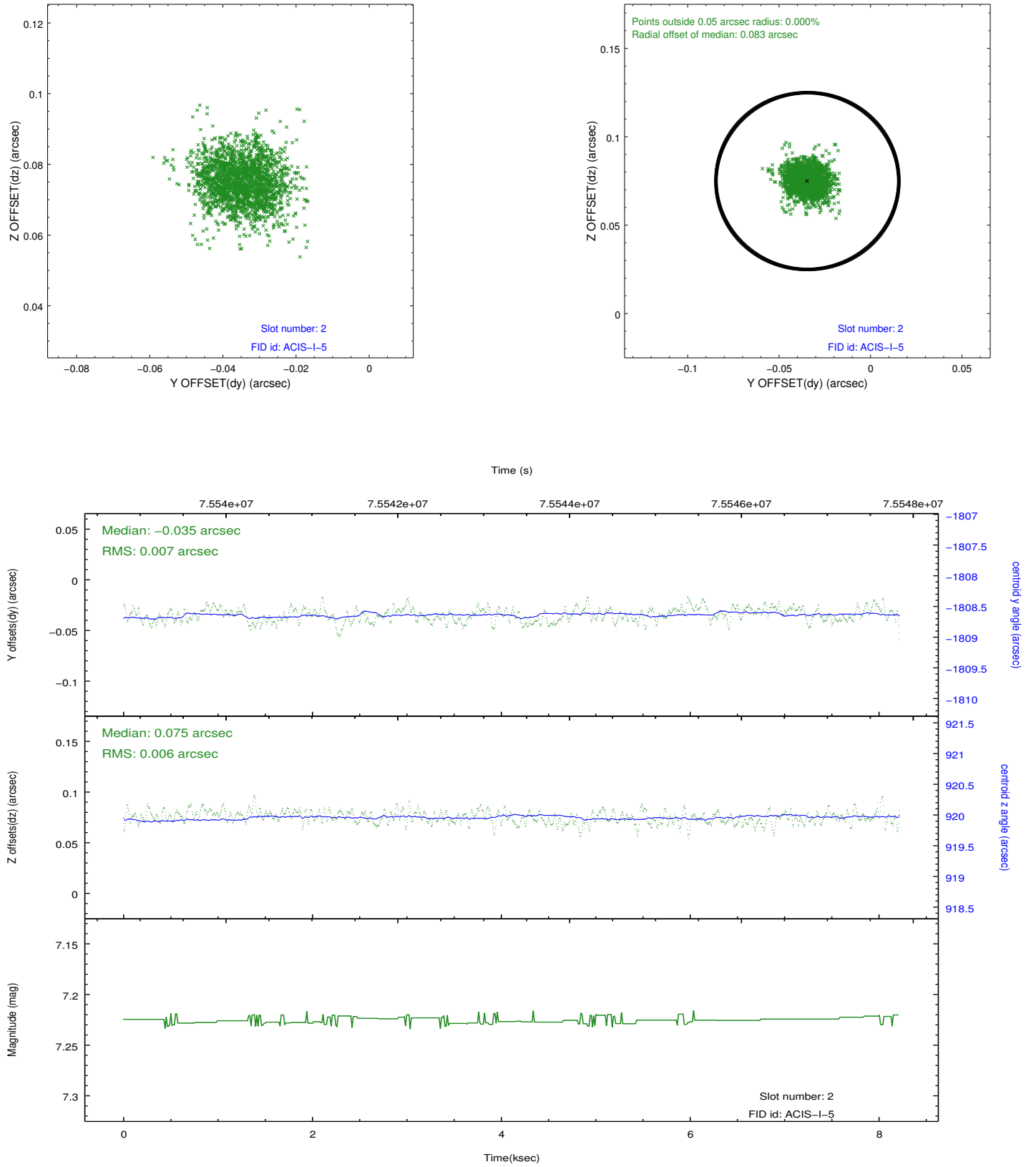
2.5.1 Slot 0



2.5.2 Slot 1



2.5.3 Slot 2



A Summary

A.1 Status

V&V Scientist	Jen Lauer
V&V Date (YYYY-MM-DD)	2012.08.30
V&V Edition	1
V&V Disposition and Status	OK
V&V Charge Time	7.664

A.2 Comments