

V&V Reference Report

L2 ASCDS Version : 8.4.5

Observation 1718 - L2 Version 4
Chandra X-Ray Center

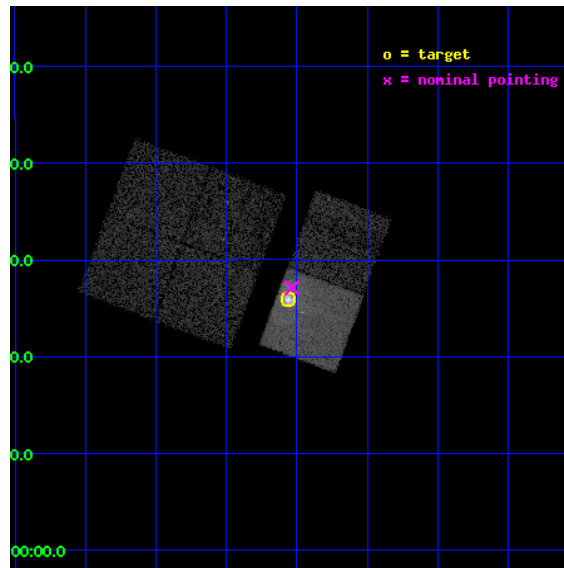
L2 Processing Date : Aug 28 2012

Contents

1	Front	2
2	OBI	3
2.1	OBI	3
2.1.1	Images	3
2.1.2	Bias	3
2.1.3	Parameters	4
2.1.4	Events	4
2.2	Compared Parameters	5
2.3	Aspect	6
2.4	Star Slots	9
2.4.1	Slot 3	9
2.4.2	Slot 4	10
2.4.3	Slot 5	11
2.4.4	Slot 6	12
2.4.5	Slot 7	13
2.5	FID Slots	14
2.5.1	Slot 0	14
2.5.2	Slot 1	15
2.5.3	Slot 2	16
A	Summary	17
A.1	Status	17
A.2	Comments	17

1 Front

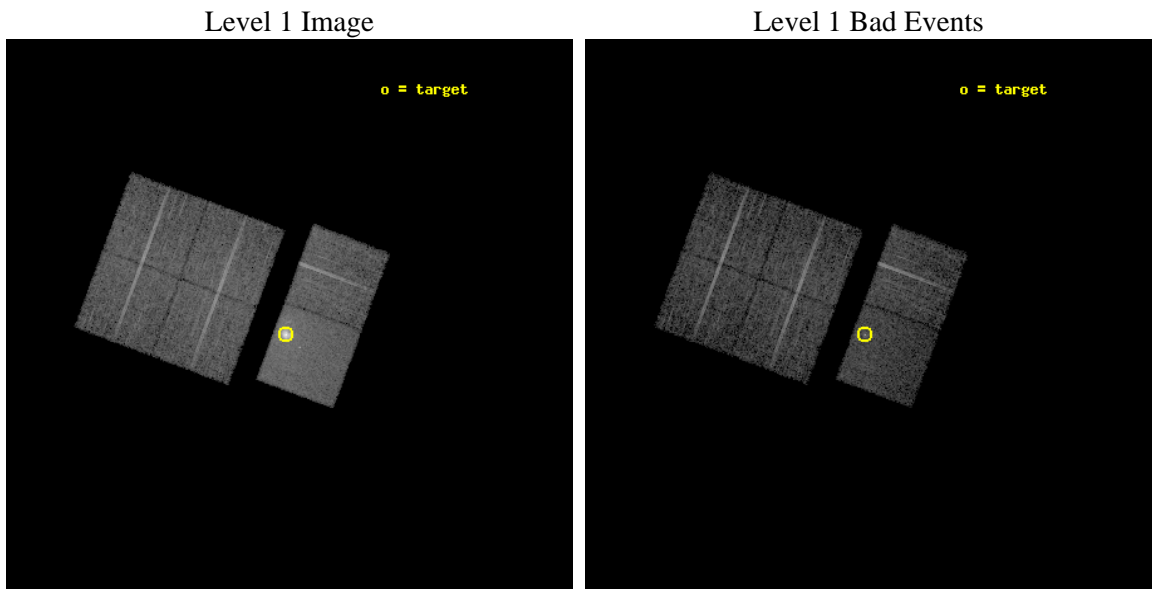
seq_num	590171	Sequence number
obs_id	1718	Observation id
title	HRC RESPONSE TO CONTINUUM SOURCE.	Proposal title
observer	Dr. CXC Calibration	Principal investigator
object	G21.5-0.9 [Chip S3, T=120, Offsets=-1,0,-3]	Source name
dtcycle	0	
cycle	P	events from which exps? Prim/Second/Both
ra_targ	278.389583	Observer's specified target RA [deg]
dec_targ	-10.568528	Observer's specified target Dec [deg]
ra_nom	278.3839130952	Nominal RA [deg]
dec_nom	-10.548180368002	Nominal Dec [deg]
roll_nom	110.36448098325	Nominal Roll [deg]
revision	4	Processing version of data
ontime	7664.0000071228	Sum of GTIs [s]
livetime	7566.9538243258	Livetime [s]
ontime0	7664.0000071228	Sum of GTIs [s]
ontime1	7664.0000071228	Sum of GTIs [s]
ontime2	7664.0000071228	Sum of GTIs [s]
ontime3	7660.7590368837	Sum of GTIs [s]
ontime6	7664.0000071228	Sum of GTIs [s]
ontime7	7664.0000071228	Sum of GTIs [s]
l2events	79225	Number of level 2 events



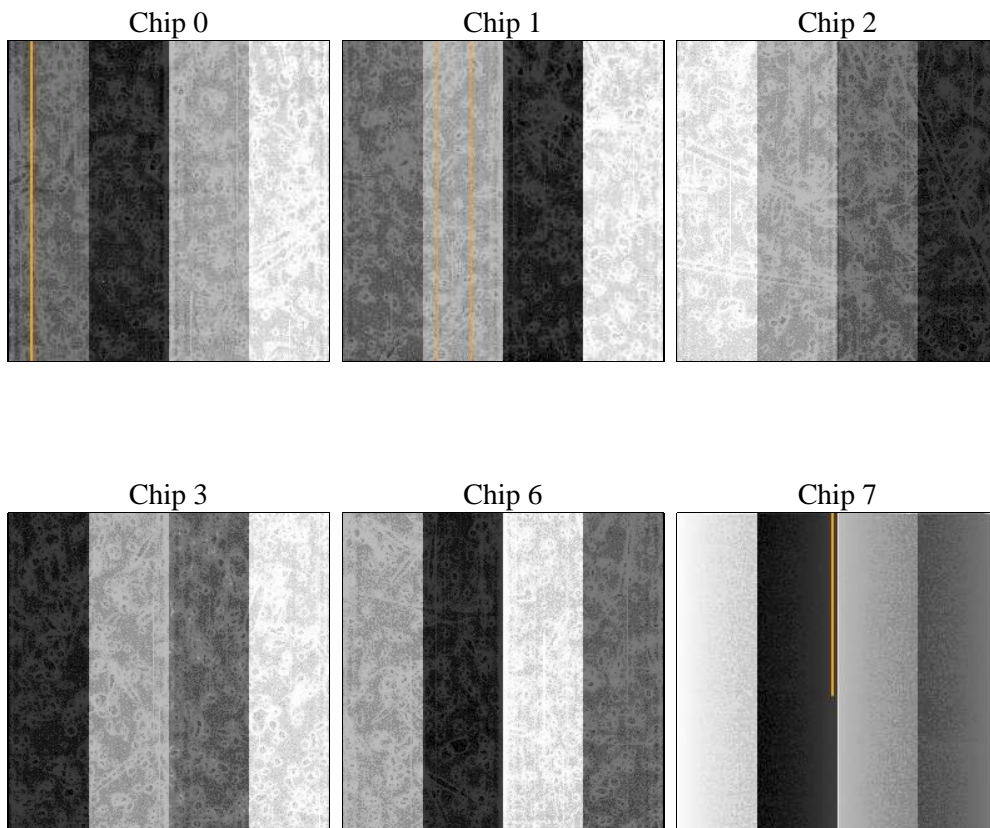
2 OBI

2.1 OBI

2.1.1 Images



2.1.2 Bias



2.1.3 Parameters

obi_num	0	Obi number	sched_exp_time	8000.000000	[s] Scheduled observation exposure time
ascdsver	8.4.5	Processing system revision	ontime	7664.0000071228	Sum of GTIs [s]
caldsver	4.5.1.1	 	ontime0	7664.0000071228	Sum of GTIs [s]
date	2012-08-28T04:37:59	Date and time of file creation	ontime1	7664.0000071228	Sum of GTIs [s]
revision	4	Processing version of data	ontime2	7664.0000071228	Sum of GTIs [s]
			ontime3	7660.7590368837	Sum of GTIs [s]
			ontime6	7664.0000071228	Sum of GTIs [s]
			ontime7	7664.0000071228	Sum of GTIs [s]
			l1events	325111	Number of level 1 events

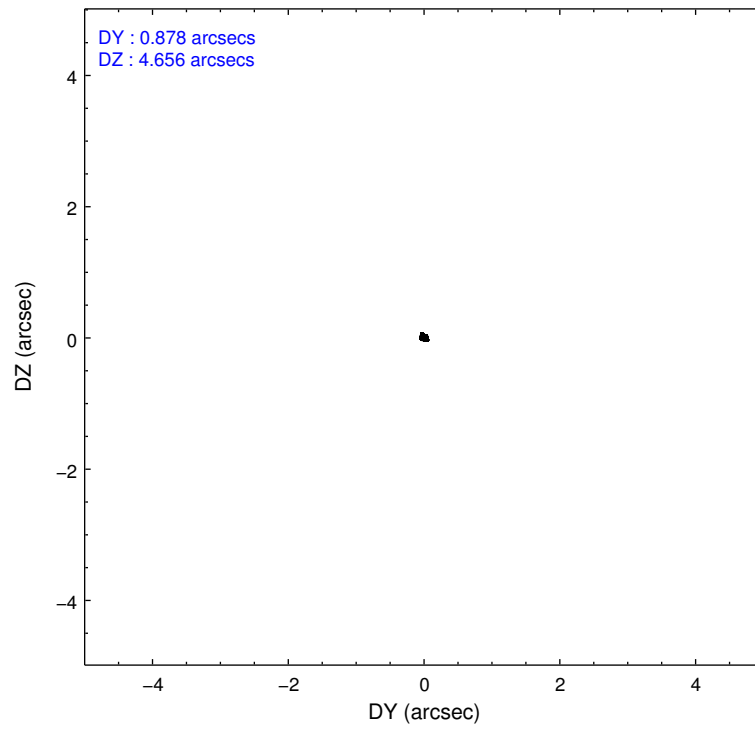
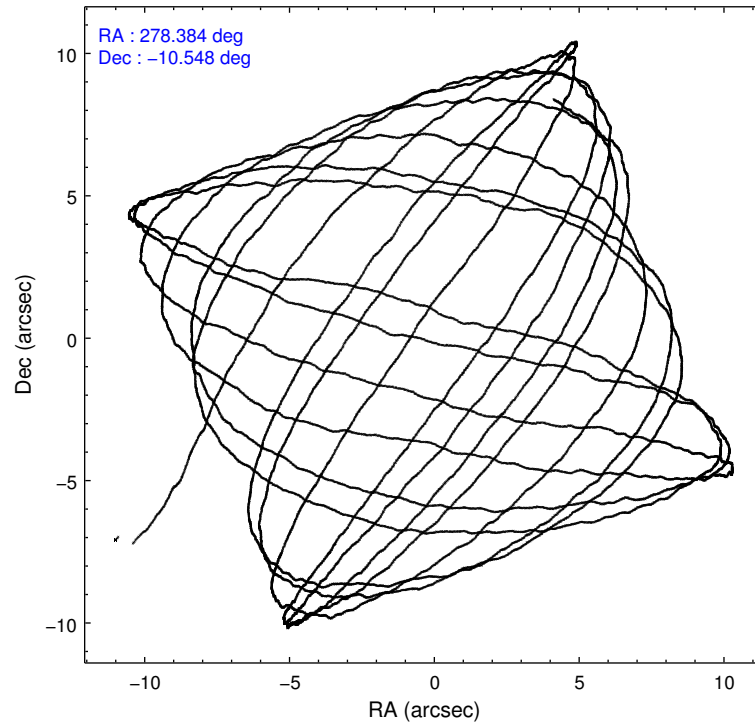
2.1.4 Events

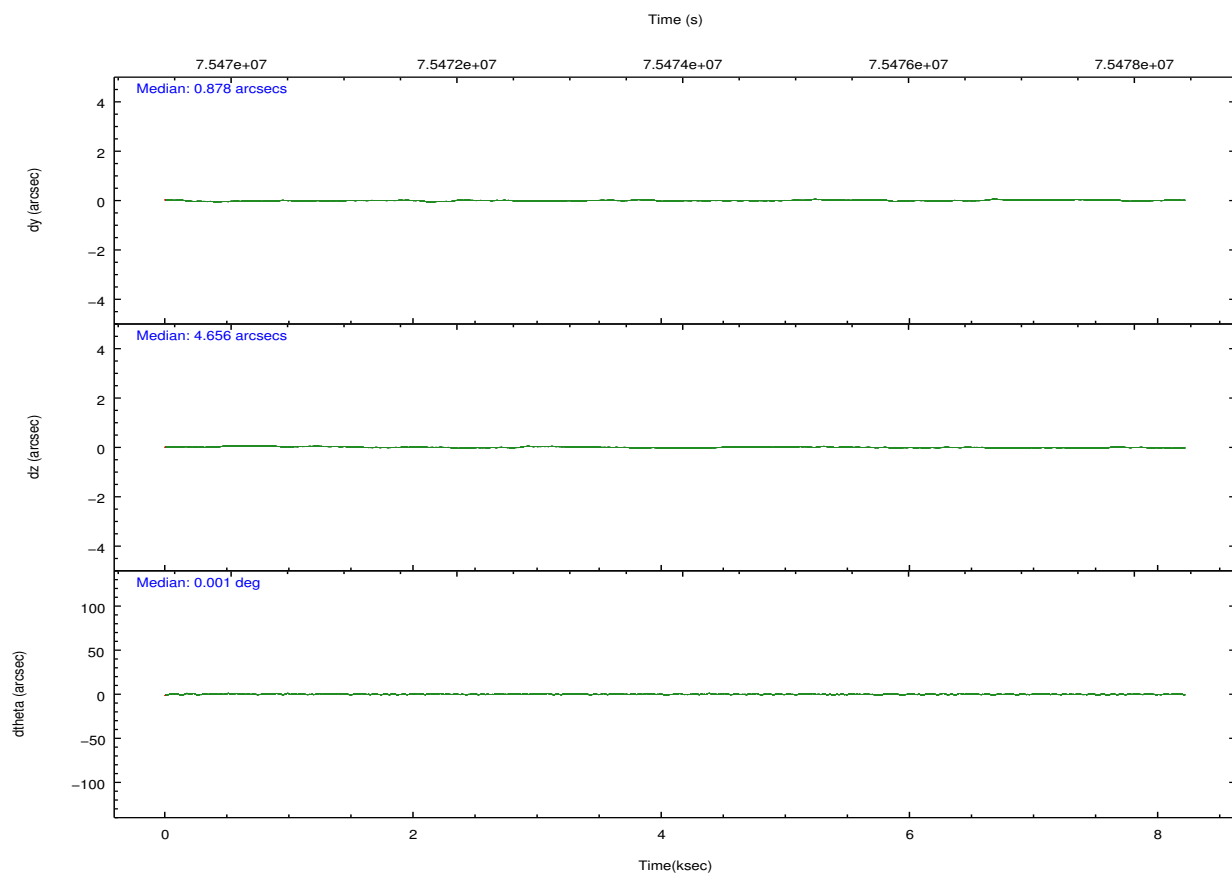
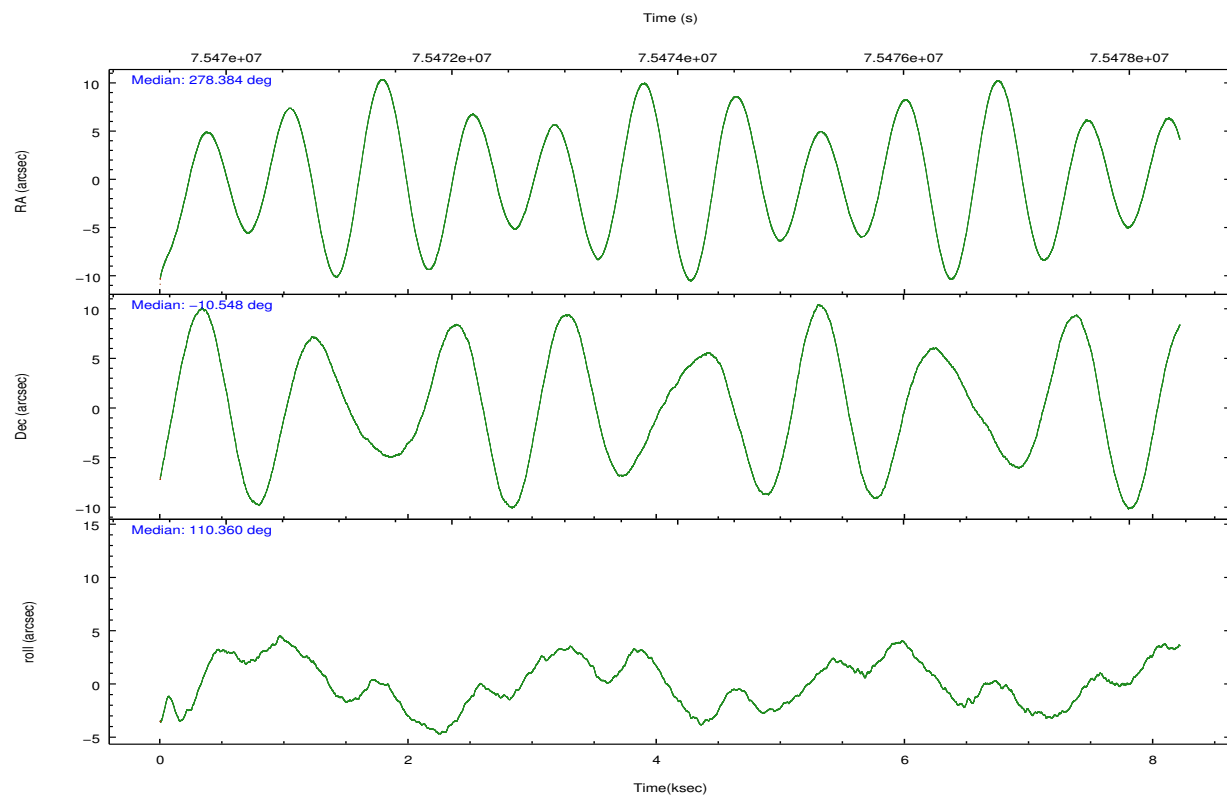
	ccd 0	ccd 1	ccd 2	ccd 3	ccd 6	ccd 7		ccd 0	ccd 1	ccd 2	ccd 3	ccd 6	ccd 7
level 1 events	46823	44164	50270	47861	49985	86008	grade 0 events	2788	2653	2870	2871	3205	8072
rejected events	40465	37943	44038	41549	43047	33664		5%	6%	5%	5%	6%	9%
rejected %	86%	85%	87%	86%	86%	39%	grade 1 events	30	20	29	24	32	104
								0%	0%	0%	0%	0%	0%
							grade 2 events	1404	1331	1327	1291	1353	11790
								2%	3%	2%	2%	2%	13%
							grade 3 events	535	552	551	557	591	5378
								1%	1%	1%	1%	1%	6%
							grade 4 events	546	580	511	550	573	5252
								1%	1%	1%	1%	1%	6%
							grade 5 events	1587	1697	1474	1632	1801	5856
								3%	3%	2%	3%	3%	6%
							grade 6 events	1089	1108	975	1046	1218	21872
								2%	2%	1%	2%	2%	25%
							grade 7 events	38844	36223	42533	39890	41212	27684
								82%	82%	84%	83%	82%	32%

2.2 Compared Parameters

Parameter	Planned	Actual	Parameter	Planned	Actual
Instrument	ACIS	ACIS	Obspar format version number	7	7
Detector	ACIS-012367	ACIS-012367	Obspar file type	PREDICTED	ACTUAL
Grating	NONE	NONE	Obspar update status	NONE	UPDATED
Data mode	FAINT	FAINT	Number of optional ACIS chips dropped	0	0
Observation mode	POINTING	POINTING	On-chip summing requested	N	N
[deg] Pointing RA	278.405471	278.3839130951995	Subarray requested	NONE	NONE
[deg] Pointing Dec	-10.565618	-10.54818036800216	Alternating exposures requested	N	N
[deg] Pointing Roll	110.211803	110.3644809832475	[s] Primary exposure time	0.000000	3.2
[mm] SIM focus pos	-0.684267	-0.6828225247311905			
[mm] SIM defocus	0	0.001444936568705701			
[mm] SIM translation stage pos	-198.916523	-198.9099978217132			
[mm] SIM translation stage offset	8.784000000000001	8.777475238705364			
[s] Observation start time (MET)	75470045.184000	75469649.654717			
Observation start date	2000-05-23T11:53:01	2000-05-23T11:47:29			
[s] Observation end time (MET)	75478045.184000	75478179.192531			
Observation end date	2000-05-23T14:06:21	2000-05-23T14:09:39			
Read mode	TIMED	TIMED			

2.3 Aspect



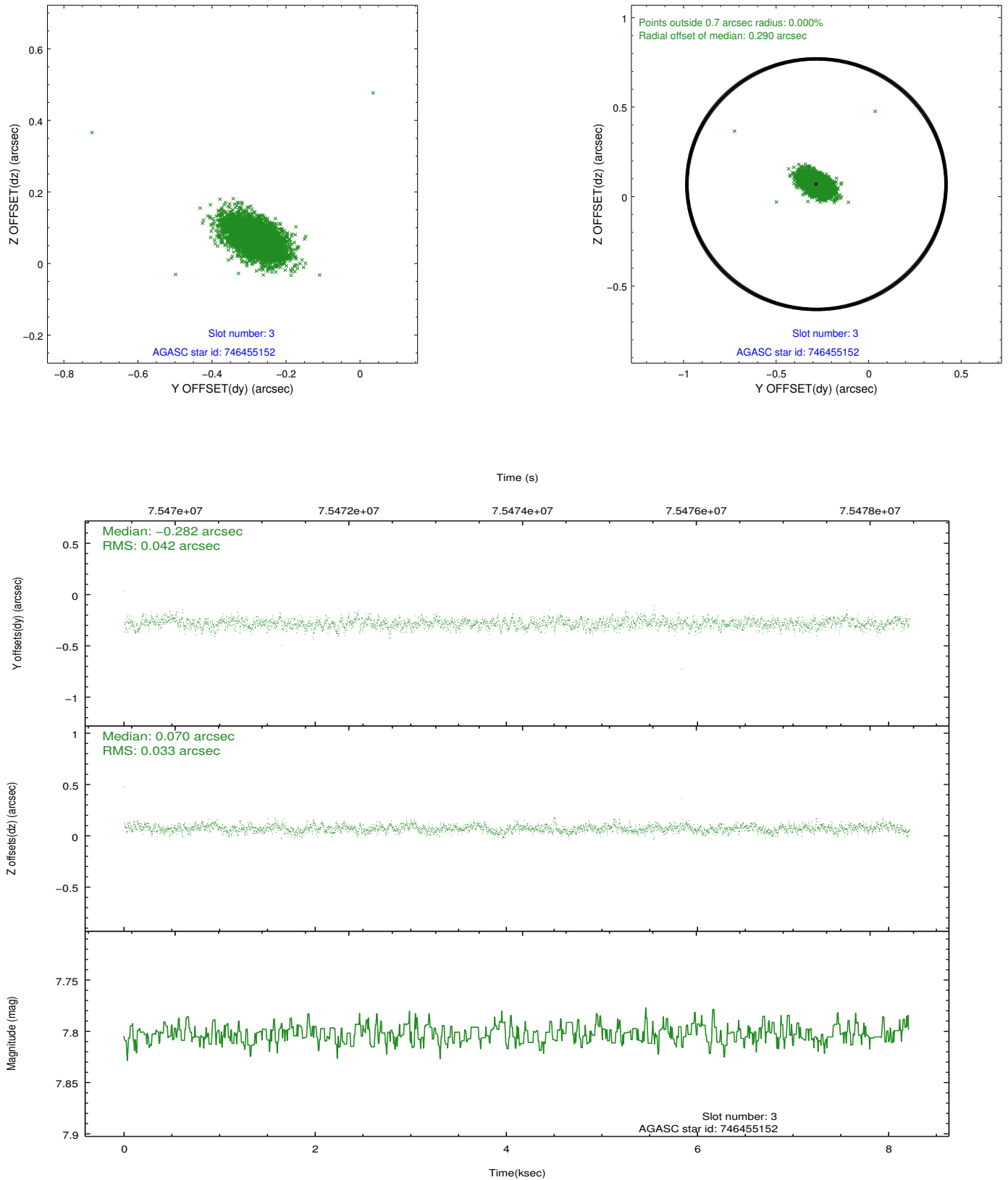


Slot Statistics

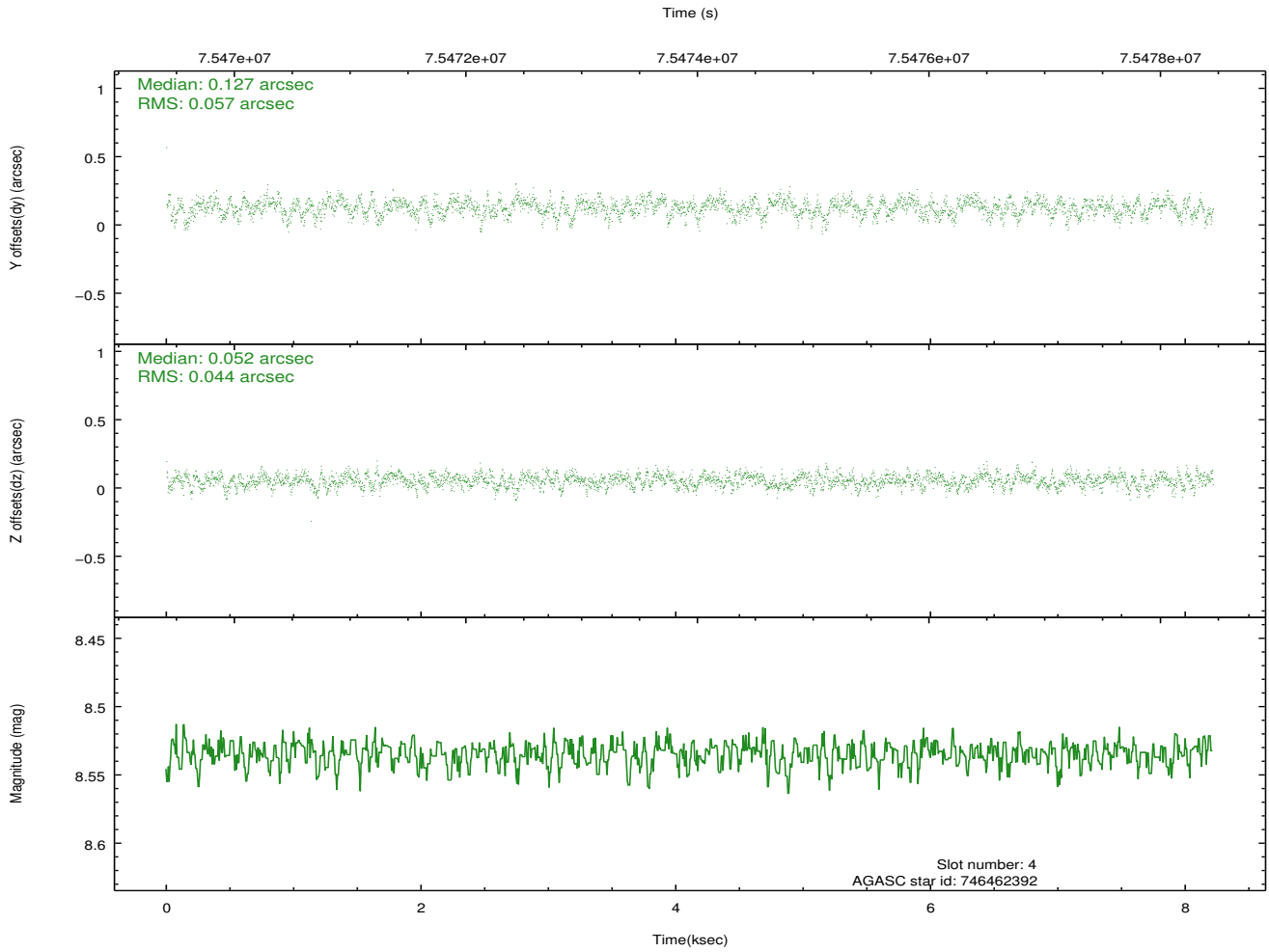
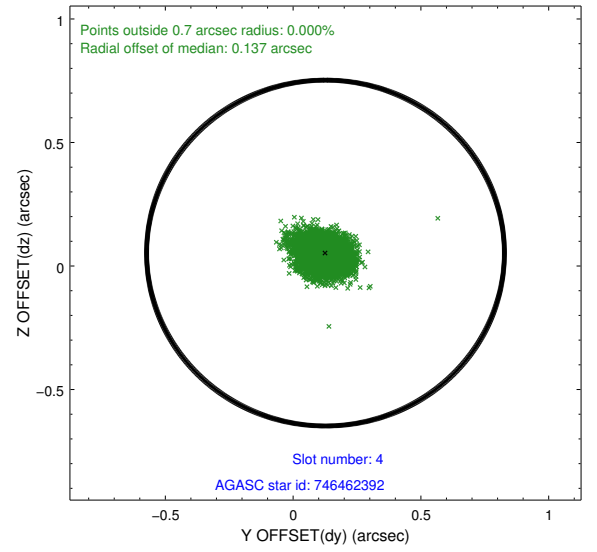
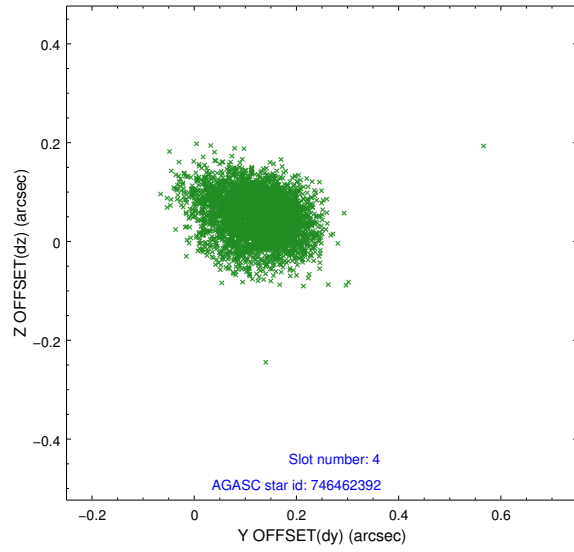
slot	status	id	mag	n_pts	med_dy	med_dz	dr1	dr2	ra	dec	mean_y	mean_z
0	FID	ACIS-S-2	7.15	2005	0.093	0.116	0.006	0.011	0.000000	0.000000	-754.03	-1544.69
1	FID	ACIS-S-4	7.24	2005	-0.066	-0.075	0.005	0.010	0.000000	0.000000	2158.94	362.77
2	FID	ACIS-S-5	7.23	2005	-0.057	-0.031	0.006	0.011	0.000000	0.000000	-1805.99	357.58
3	GUIDE	746455152	7.80	4009	-0.282	0.070	0.054	0.095	278.447893	-9.976732	1937.69	-873.79
4	GUIDE	746462392	8.53	4009	0.127	0.052	0.076	0.125	279.038421	-10.890715	-1872.47	-1695.45
5	GUIDE	746455112	8.93	4005	0.084	0.051	0.079	0.129	278.266531	-10.703234	-295.22	631.60
6	GUIDE	746460328	9.81	4004	-0.123	0.071	0.102	0.172	278.603974	-9.898096	2012.02	-1490.85
7	GUIDE	746995400	9.52	4006	0.192	-0.246	0.105	0.176	278.078957	-11.289885	-2048.22	1981.67

2.4 Star Slots

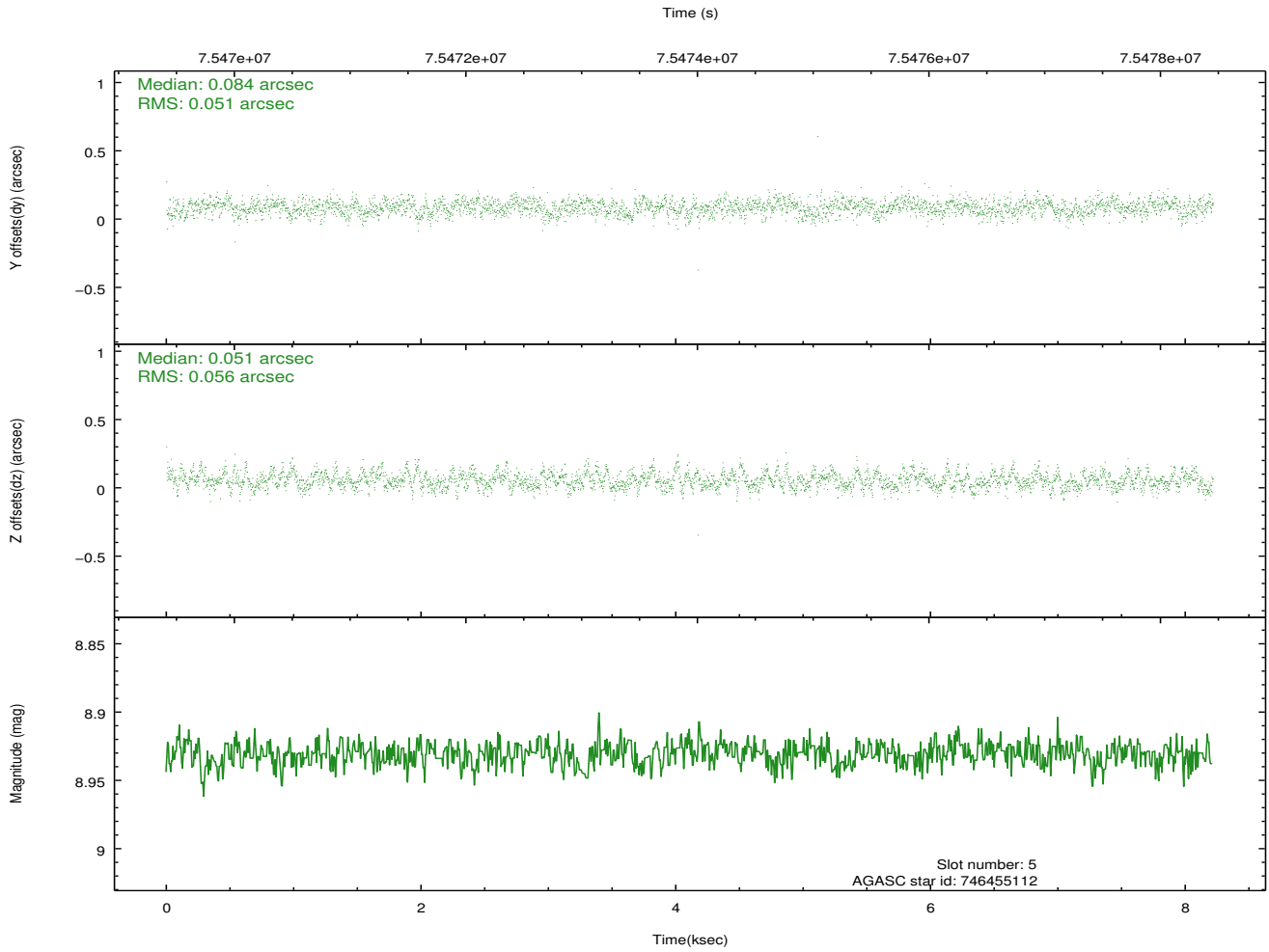
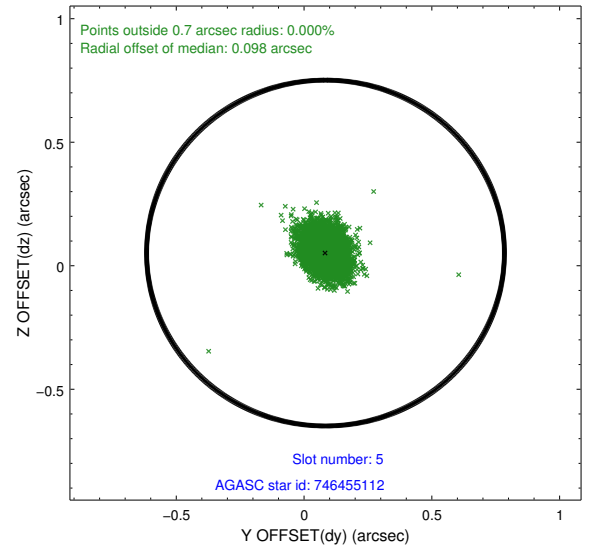
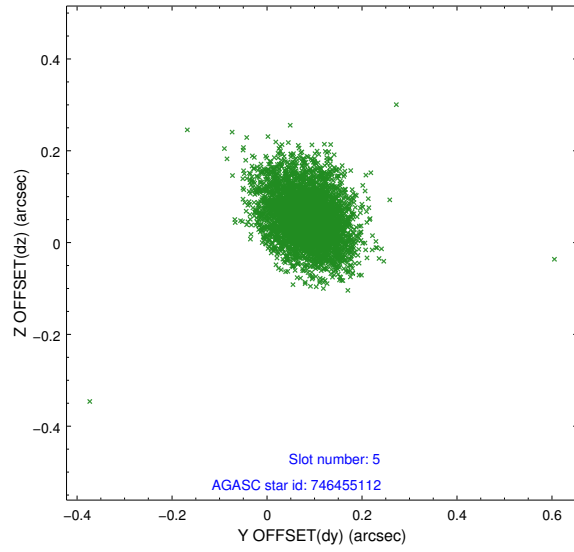
2.4.1 Slot 3



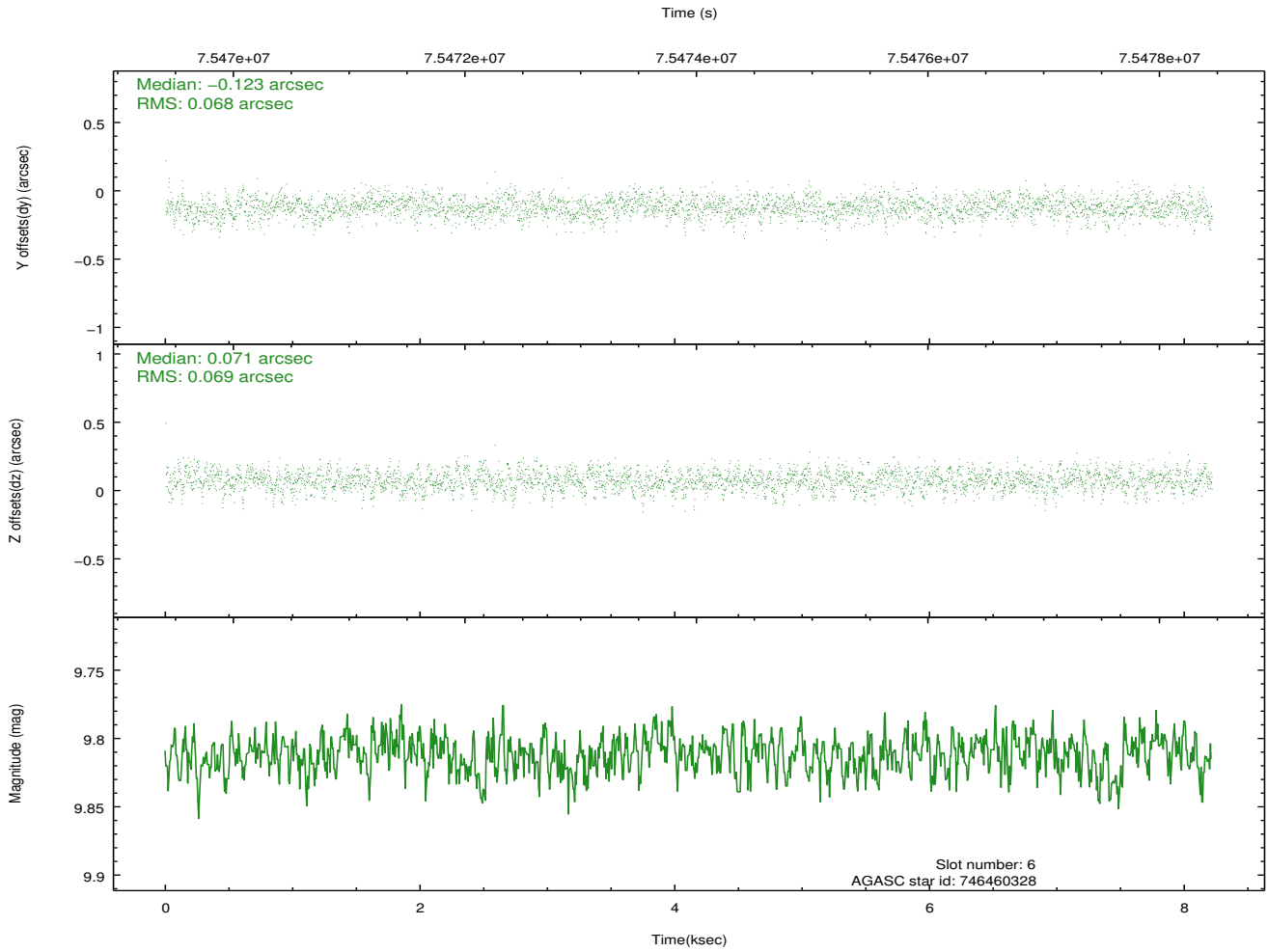
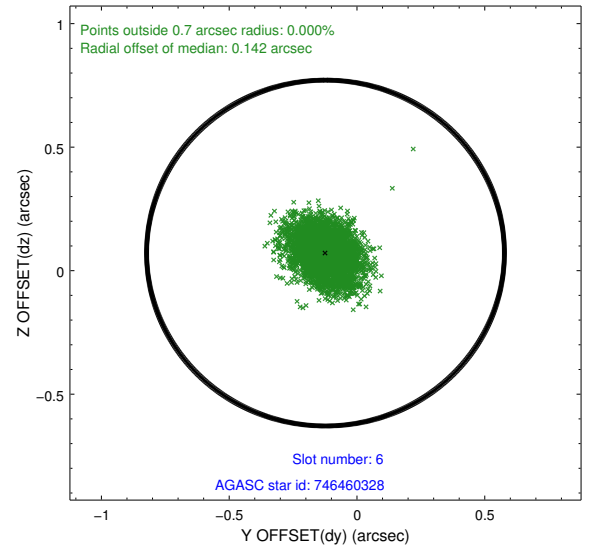
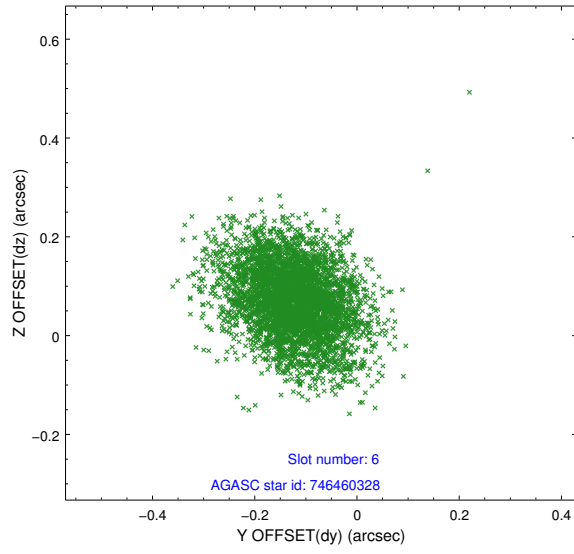
2.4.2 Slot 4



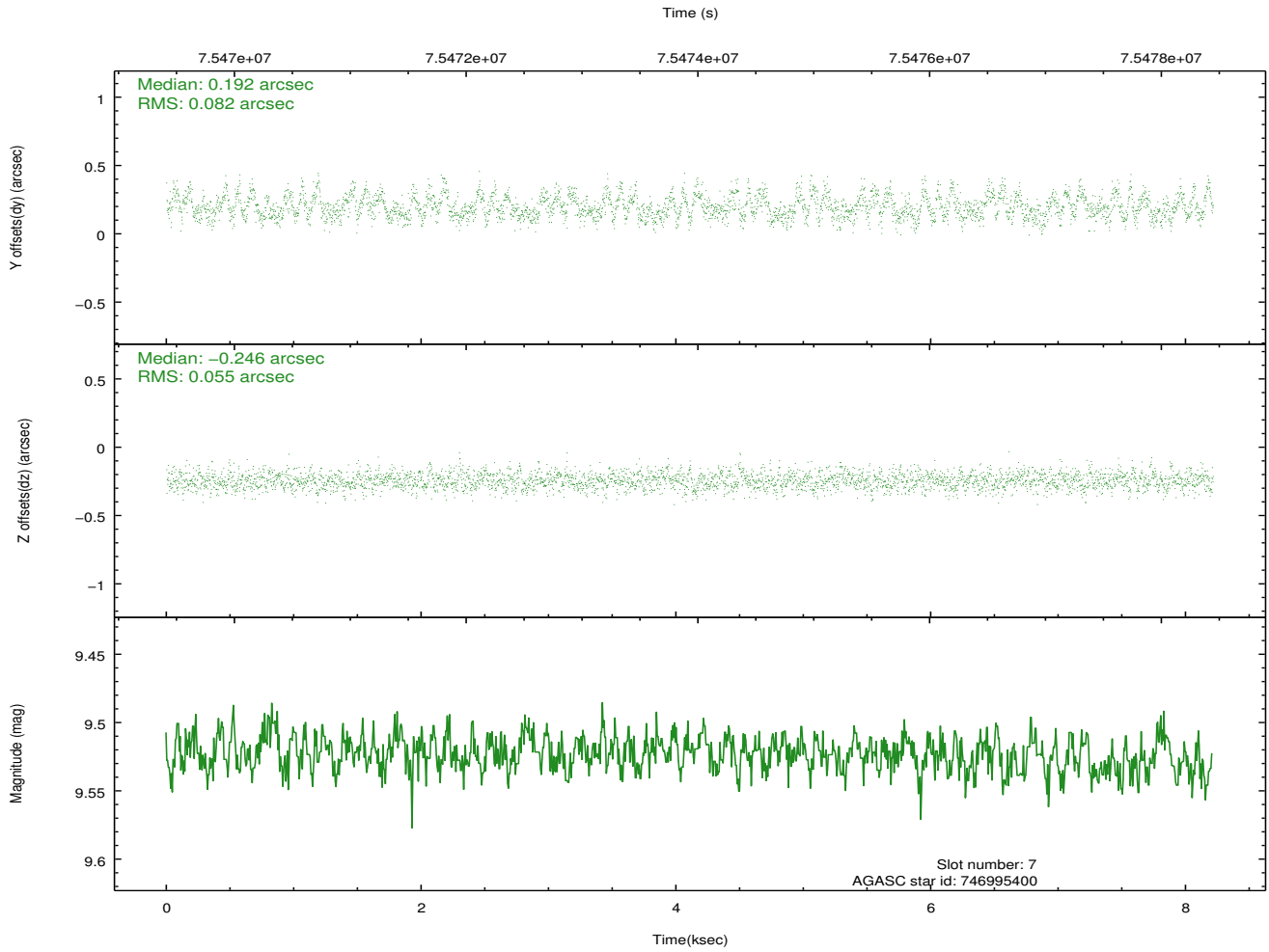
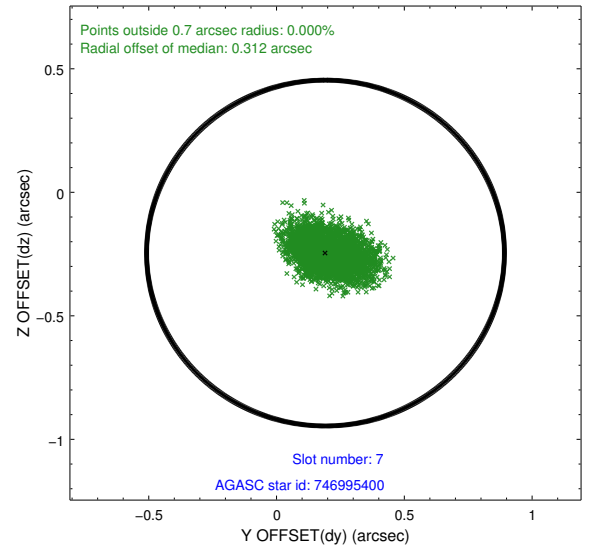
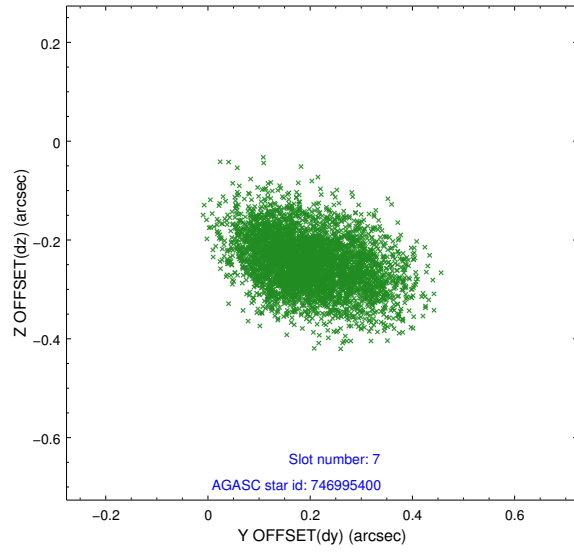
2.4.3 Slot 5



2.4.4 Slot 6

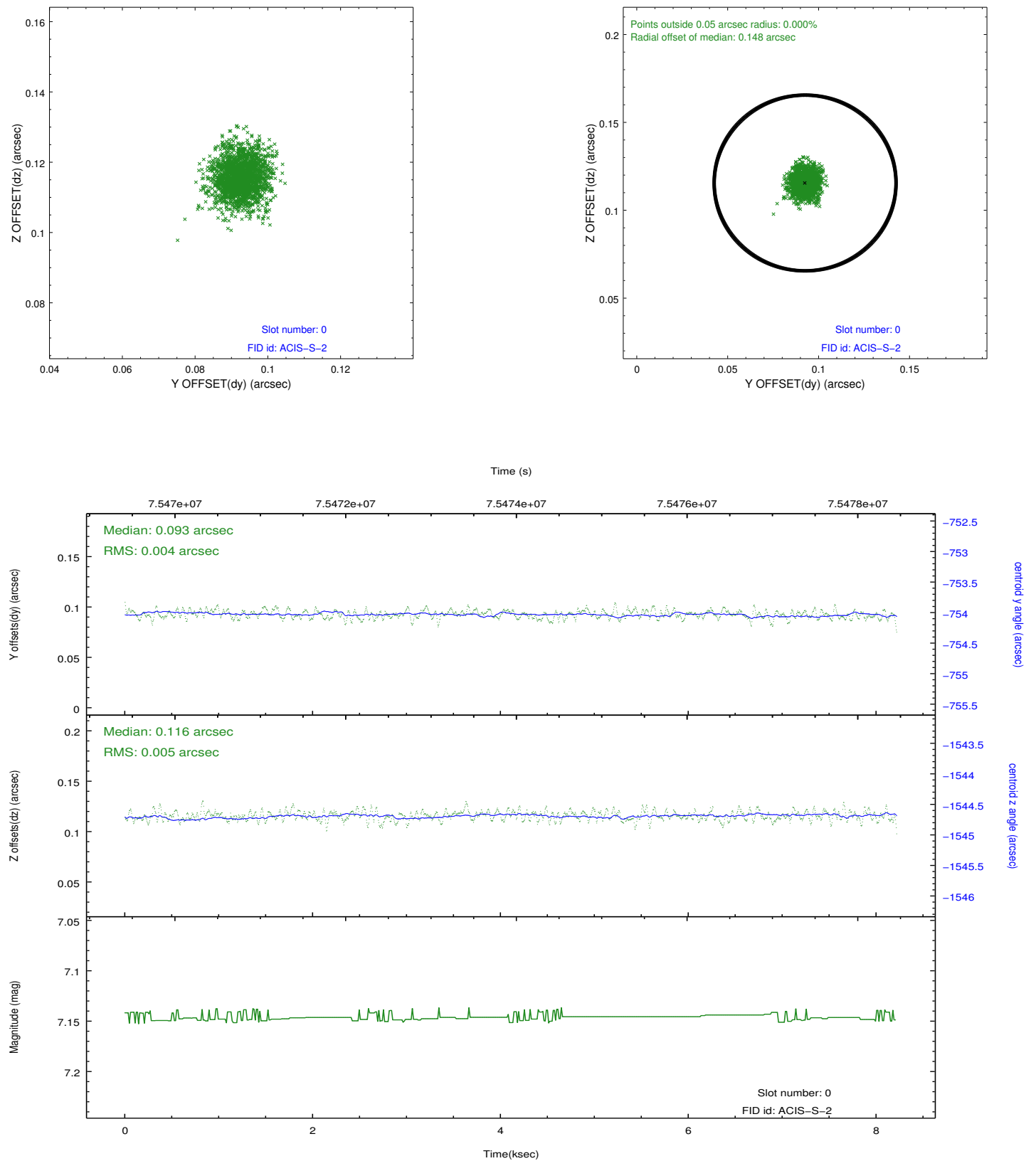


2.4.5 Slot 7

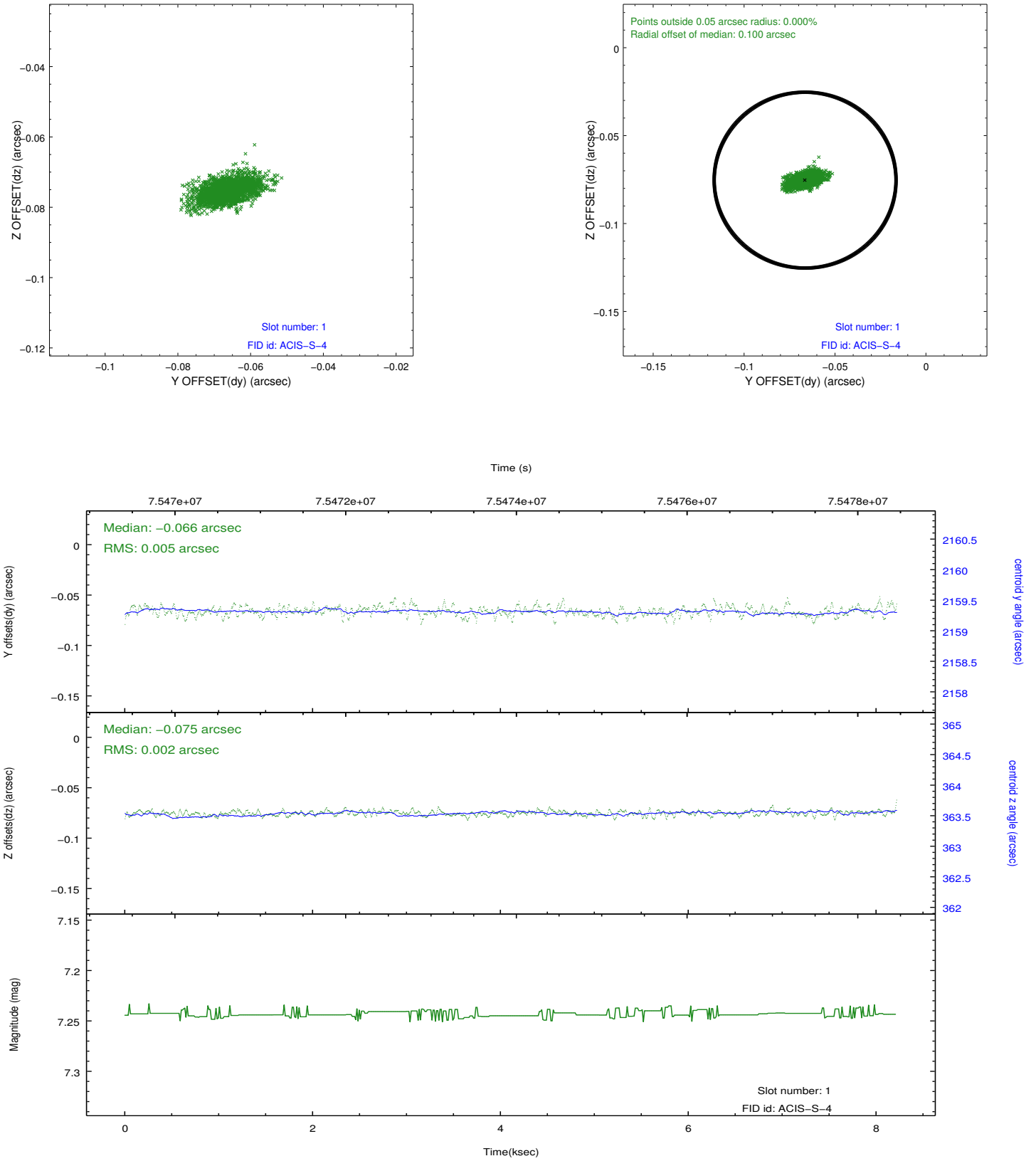


2.5 FID Slots

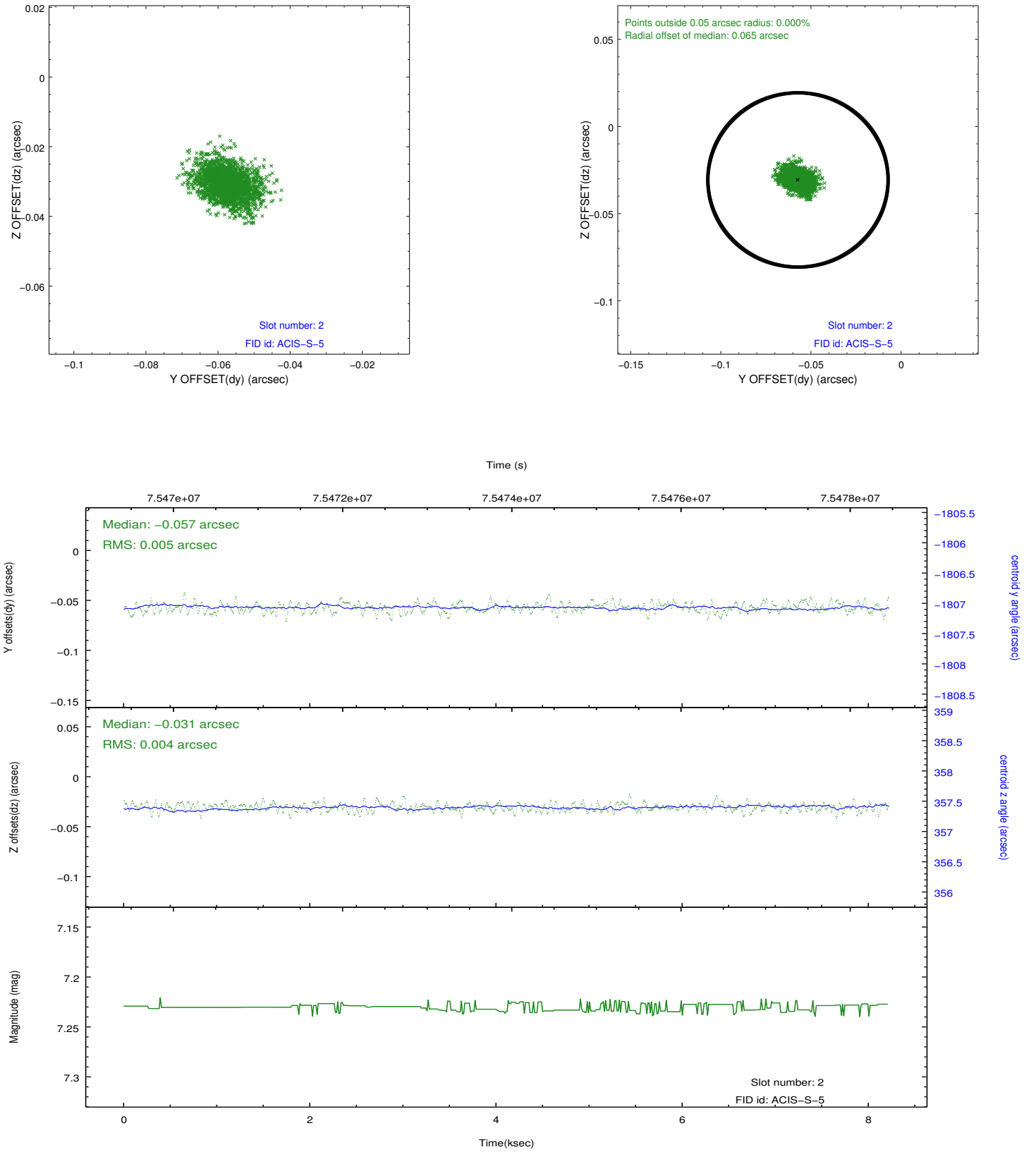
2.5.1 Slot 0



2.5.2 Slot 1



2.5.3 Slot 2



A Summary

A.1 Status

V&V Scientist	Beth Sundheim
V&V Date (YYYY-MM-DD)	2012.08.30
V&V Edition	1
V&V Disposition and Status	OK
V&V Charge Time	7.67

A.2 Comments