

# V&V Reference Report

## L2 ASCDS Version : 8.4.5

Observation 155 - L2 Version 6  
Chandra X-Ray Center

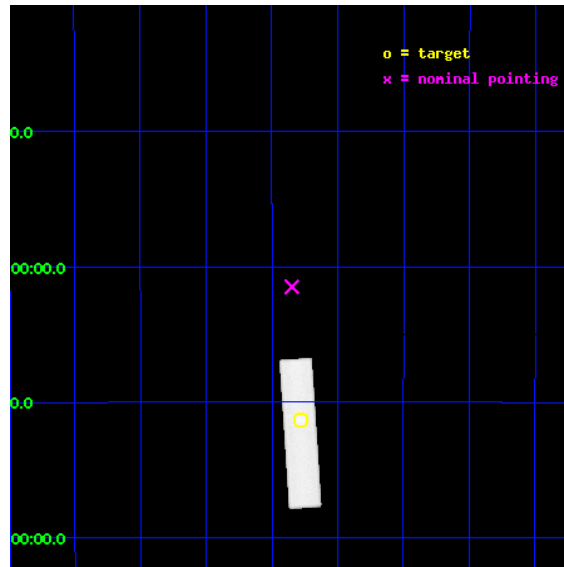
L2 Processing Date : Sep 1 2012

## Contents

<b>1</b>	<b>Front</b>	<b>2</b>
<b>2</b>	<b>OBI</b>	<b>3</b>
2.1	OBI . . . . .	3
2.1.1	Images . . . . .	3
2.1.2	Parameters . . . . .	4
2.1.3	Events . . . . .	4
2.2	Compared Parameters . . . . .	5
2.3	Aspect . . . . .	6
2.4	Star Slots . . . . .	9
2.4.1	Slot 3 . . . . .	9
2.4.2	Slot 4 . . . . .	10
2.4.3	Slot 5 . . . . .	11
2.4.4	Slot 6 . . . . .	12
2.4.5	Slot 7 . . . . .	13
2.5	FID Slots . . . . .	14
2.5.1	Slot 0 . . . . .	14
2.5.2	Slot 1 . . . . .	15
2.5.3	Slot 2 . . . . .	16
<b>A</b>	<b>Summary</b>	<b>17</b>
A.1	Status . . . . .	17
A.2	Comments . . . . .	17

# 1 Front

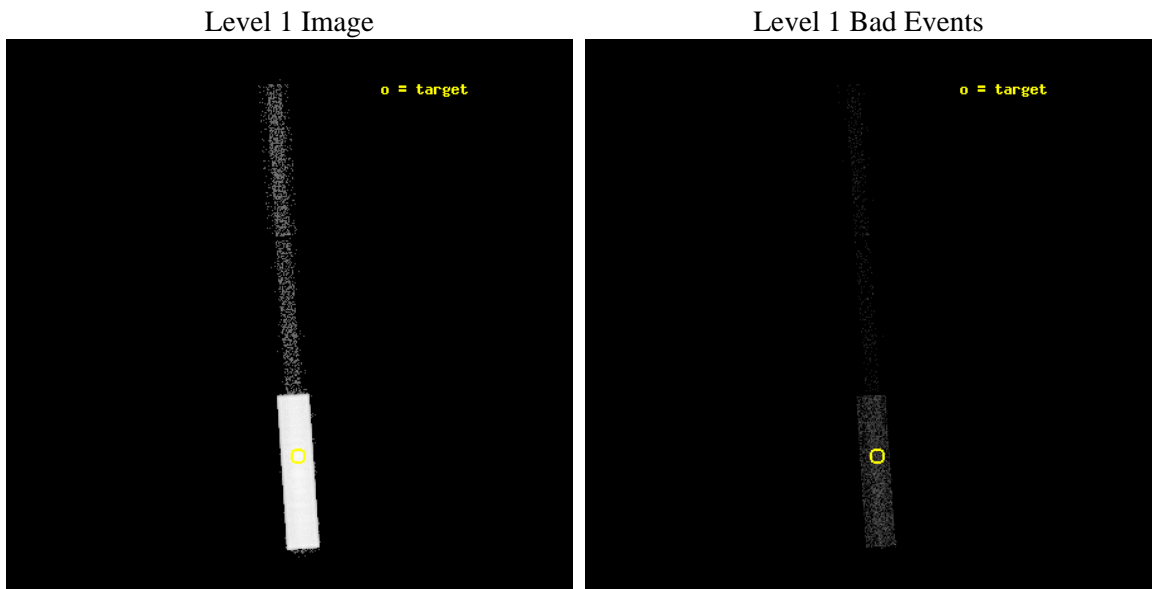
seq_num	590023	Sequence number
obs_id	155	Observation id
title	HRC RESPONSE TO CONTINUUM SOURCE.	Proposal title
observer	Dr. CXC Calibration	Principal investigator
object	G21.5-0.9 [HRC-S, Offsets=30,0,0 -Y MPC]	Source name
ra_targ	278.389583	Observer's specified target RA [deg]
dec_targ	-10.568528	Observer's specified target Dec [deg]
ra_nom	278.42395306117	Nominal RA [deg]
dec_nom	-10.074566496617	Nominal Dec [deg]
roll_nom	266.11918855117	Nominal Roll [deg]
revision	6	Processing version of data
ontime	10441.931642115	[s]
livetime	10393.102346665	Ontime multiplied by DTCOR
l2events	319921	Number of level 2 events



## 2 OBI

### 2.1 OBI

#### 2.1.1 Images



### 2.1.2 Parameters

obi_num	0	Obi number	sched_exp_time	10300.000000	[s] Scheduled observation exposure time
ascdsver	8.4.5	Processing system revision	ontime	10441.931642115	[s]
caldsver	4.5.1.1	&#160	l1events	444521	Number of level 1 events
date	2012-09-01T04:00:04	Date and time of file creation			
revision	5	Processing version of data			

### 2.1.3 Events

Level 1 Events

	<b>segment 1</b>	<b>segment 2</b>	<b>segment 3</b>
level 1 events	7506	1182	435833
rejected events	7506	954	7330
rejected %	100%	80%	1%

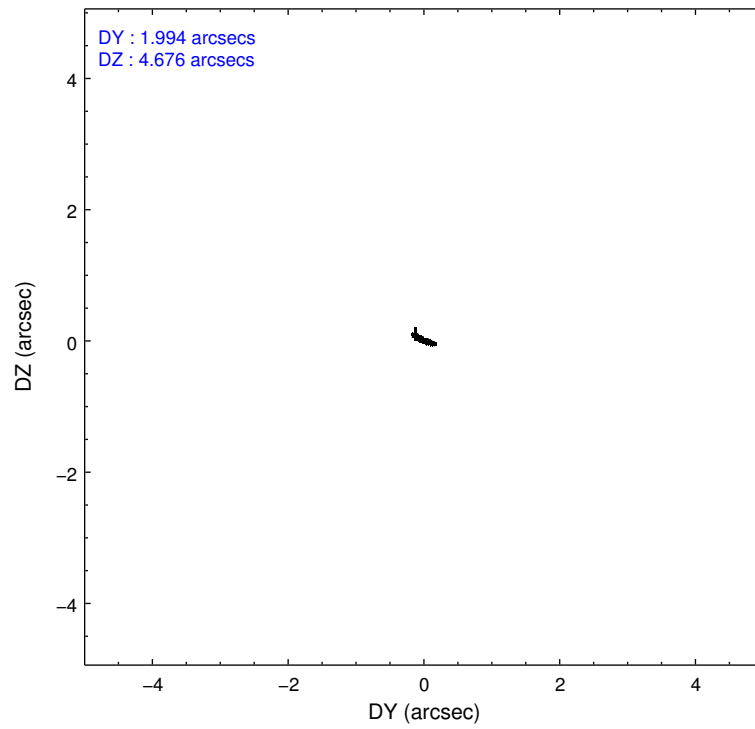
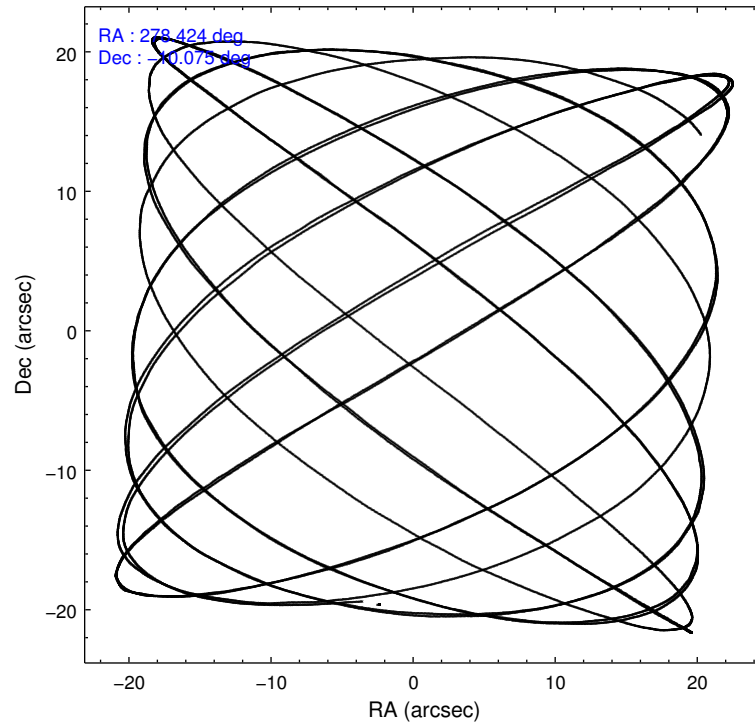


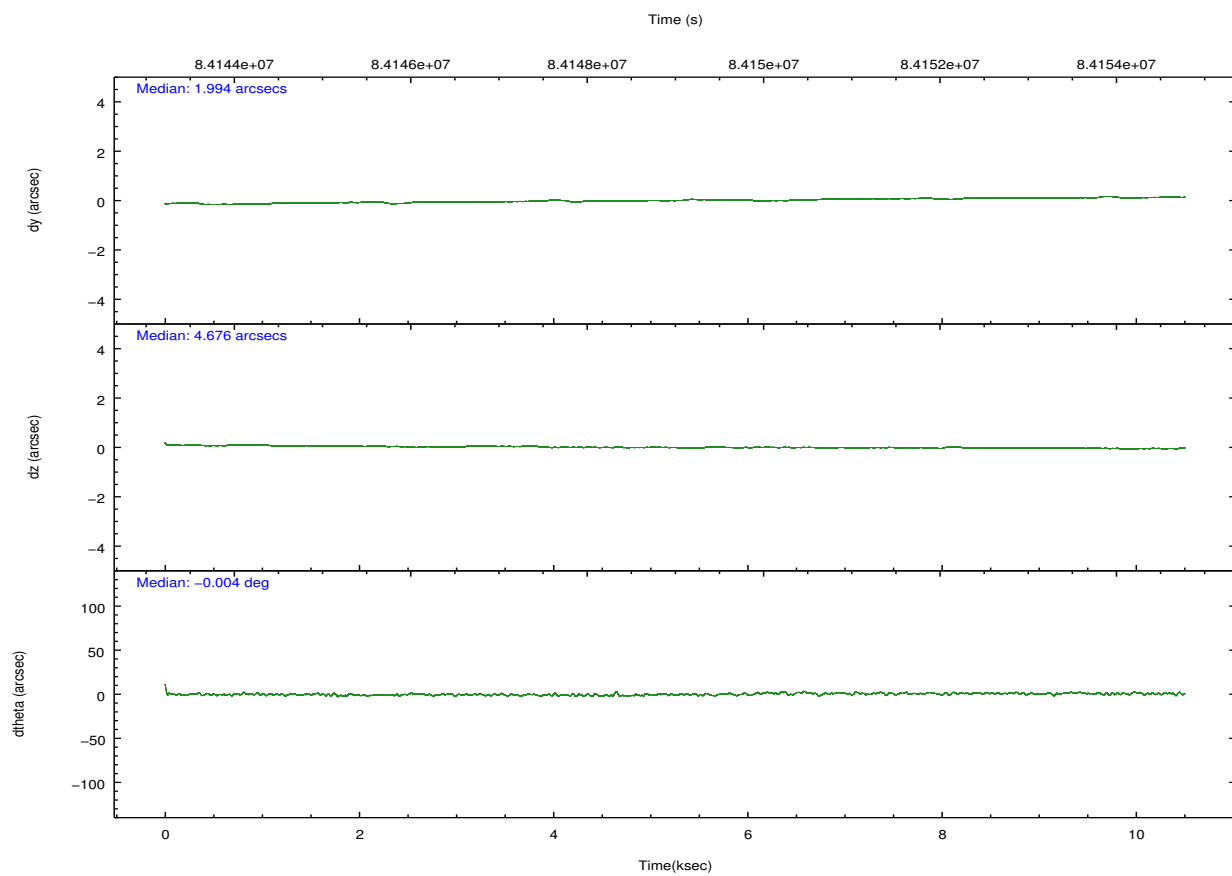
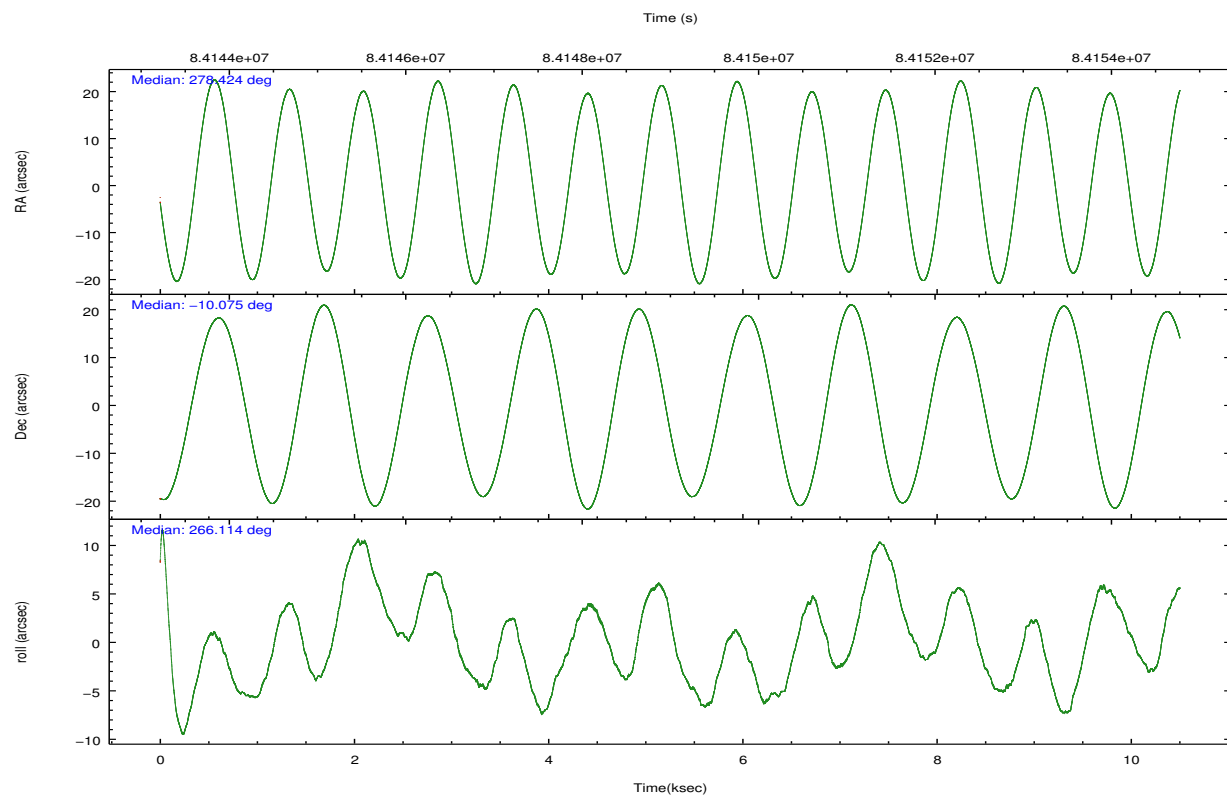
## 2.2 Compared Parameters

Parameter	Planned	Actual
Instrument	HRC	HRC
Detector	HRC-S	HRC-S
Grating	NONE	NONE
Data mode	OBSERVING	OBSERVING
Observation mode	POINTING	POINTING
[deg] Pointing RA	278.410078	278.4239530611711
[deg] Pointing Dec	-10.049355	-10.07456649661674
[deg] Pointing Roll	266.049433	266.119188551167
[mm] SIM focus pos	-1.429586	-1.428180813131781
[mm] SIM defocus	0.1037507710433287	0.1051558262725154
[mm] SIM translation stage pos	250.455976	250.466033080201
[mm] SIM translation stage offset	0	-0.01005468664627074
[s] Observation start time (MET)	84143945.184000	84143559.75121801
Observation start date	2000-08-31T21:18:01	2000-08-31T21:12:39
[s] Observation end time (MET)	84154245.184000	84154415.014126
Observation end date	2000-09-01T00:09:41	2000-09-01T00:13:35

Parameter	Planned	Actual
Obspar format version number	7	7
Obspar file type	PREDICTED	ACTUAL
Obspar update status	NONE	UPDATED

## 2.3 Aspect



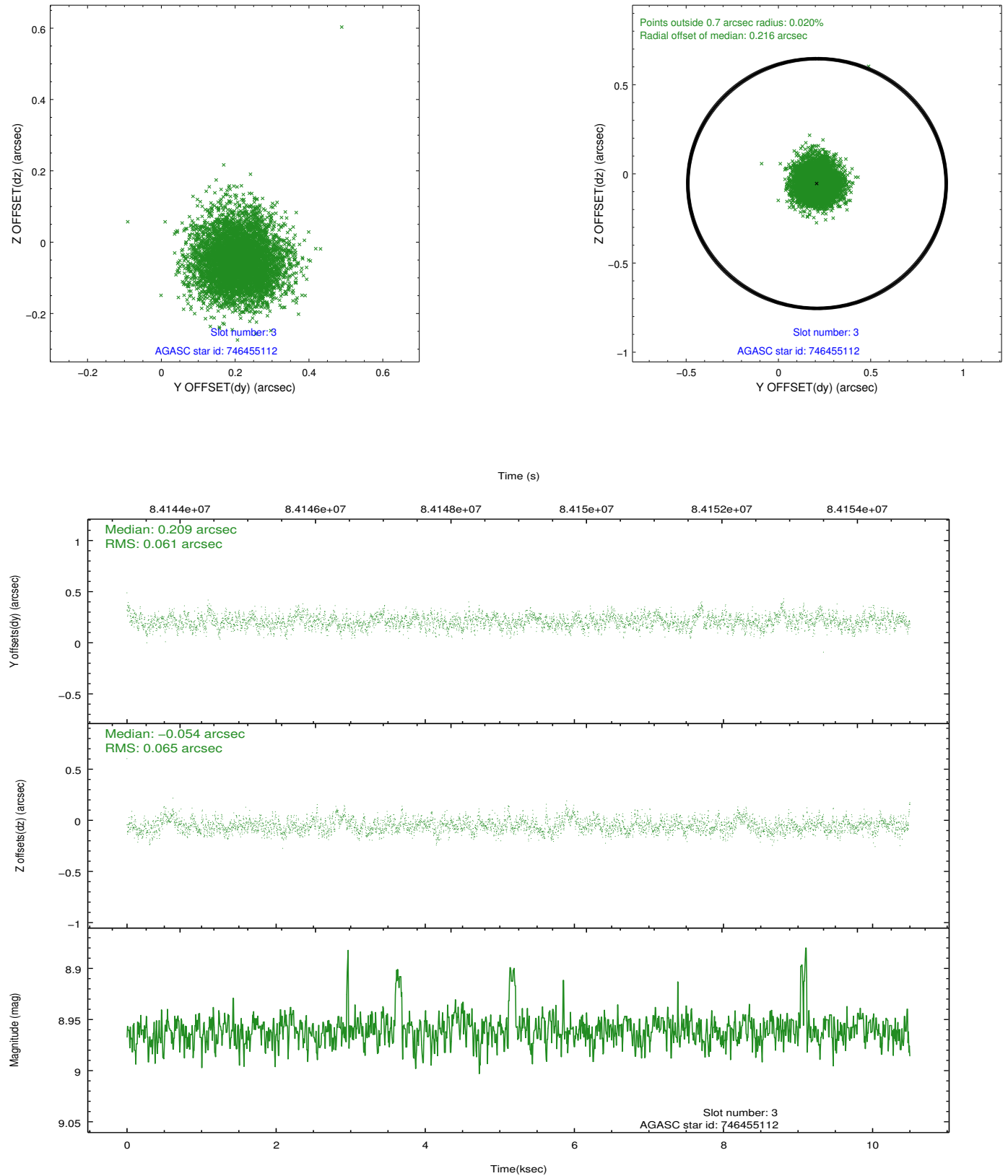


### Slot Statistics

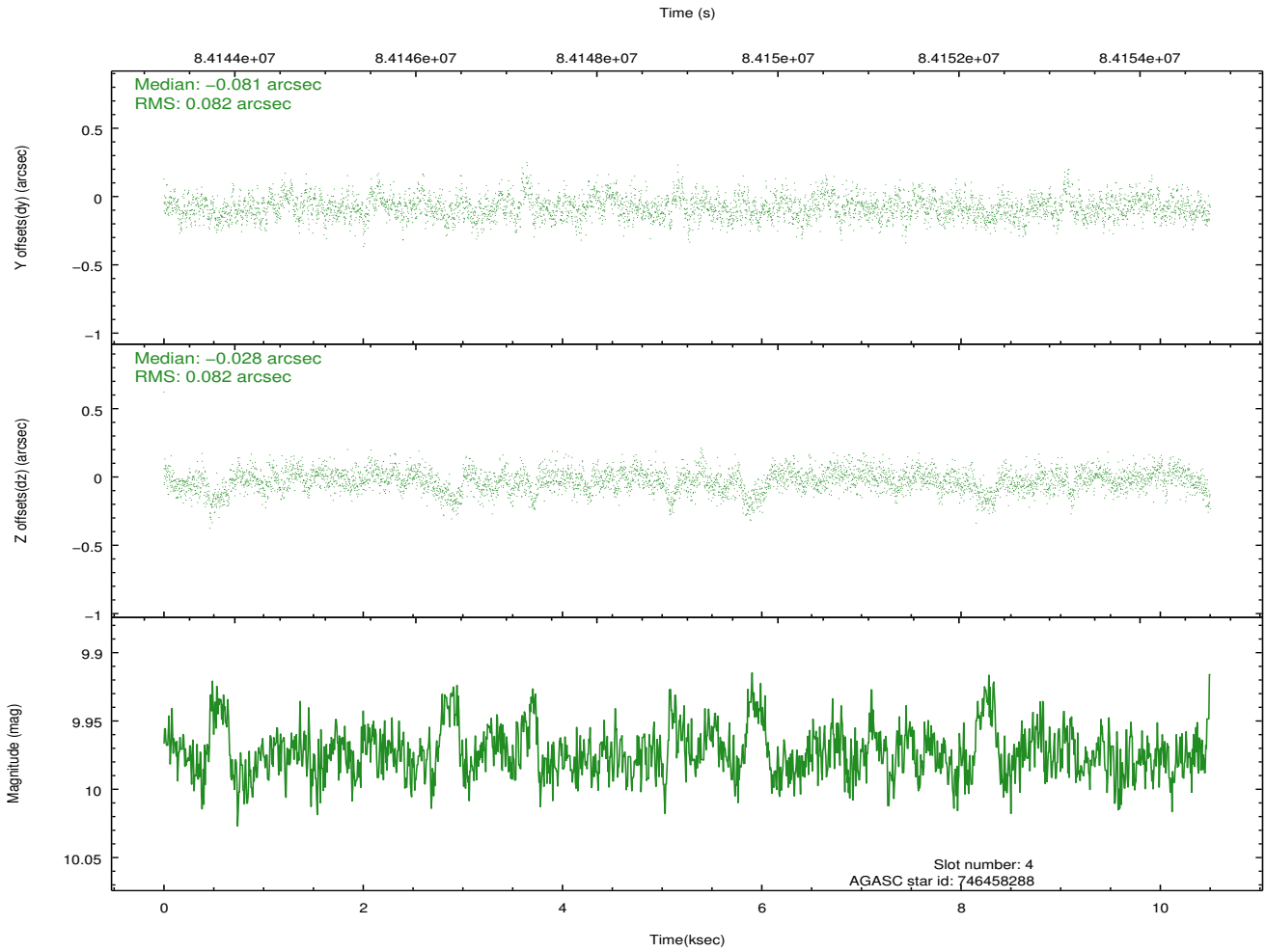
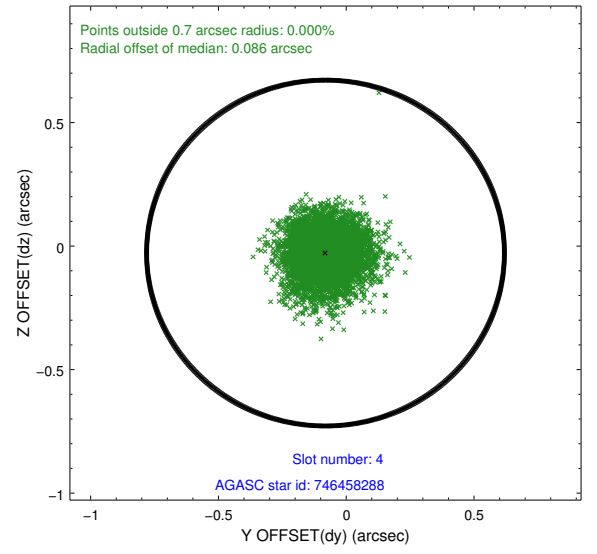
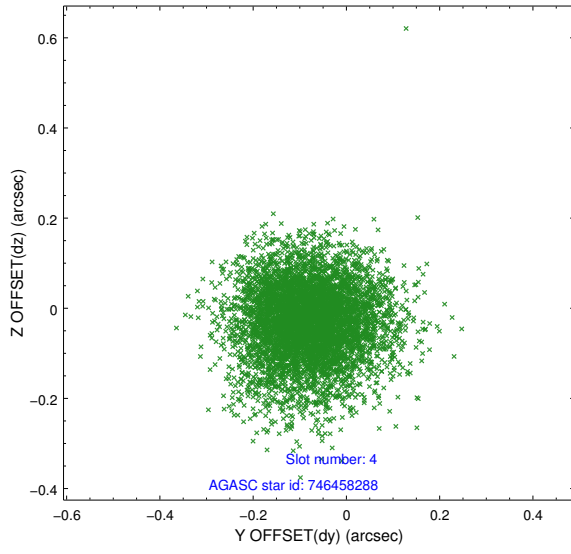
slot	status	id	mag	n_pts	med_dy	med_dz	dr1	dr2	ra	dec	mean_y	mean_z
0	FID	HRC-S-1	6.97	2562	0.117	-0.148	0.007	0.012	0.000000	0.000000	-1156.02	-453.21
1	FID	HRC-S-3	7.00	2562	0.165	-0.054	0.011	0.018	0.000000	0.000000	-1159.17	576.24
2	FID	HRC-S-4	6.94	2562	0.106	-0.095	0.007	0.014	0.000000	0.000000	1241.76	579.20
3	GUIDE	746455112	8.96	5121	0.209	-0.054	0.094	0.152	278.266531	-10.703234	2383.69	-343.45
4	GUIDE	746458288	9.97	5121	-0.081	-0.028	0.123	0.202	278.591405	-9.671581	-1400.58	548.84
5	GUIDE	746460328	9.81	5121	-0.046	0.039	0.106	0.178	278.603974	-9.898096	-590.72	649.37
6	GUIDE	746461728	9.79	5119	0.082	0.154	0.120	0.196	278.986921	-10.530755	1589.90	2157.59
7	GUIDE	746460824	9.92	5120	-0.162	-0.112	0.117	0.199	277.863068	-9.489503	-1875.00	-2075.58

## 2.4 Star Slots

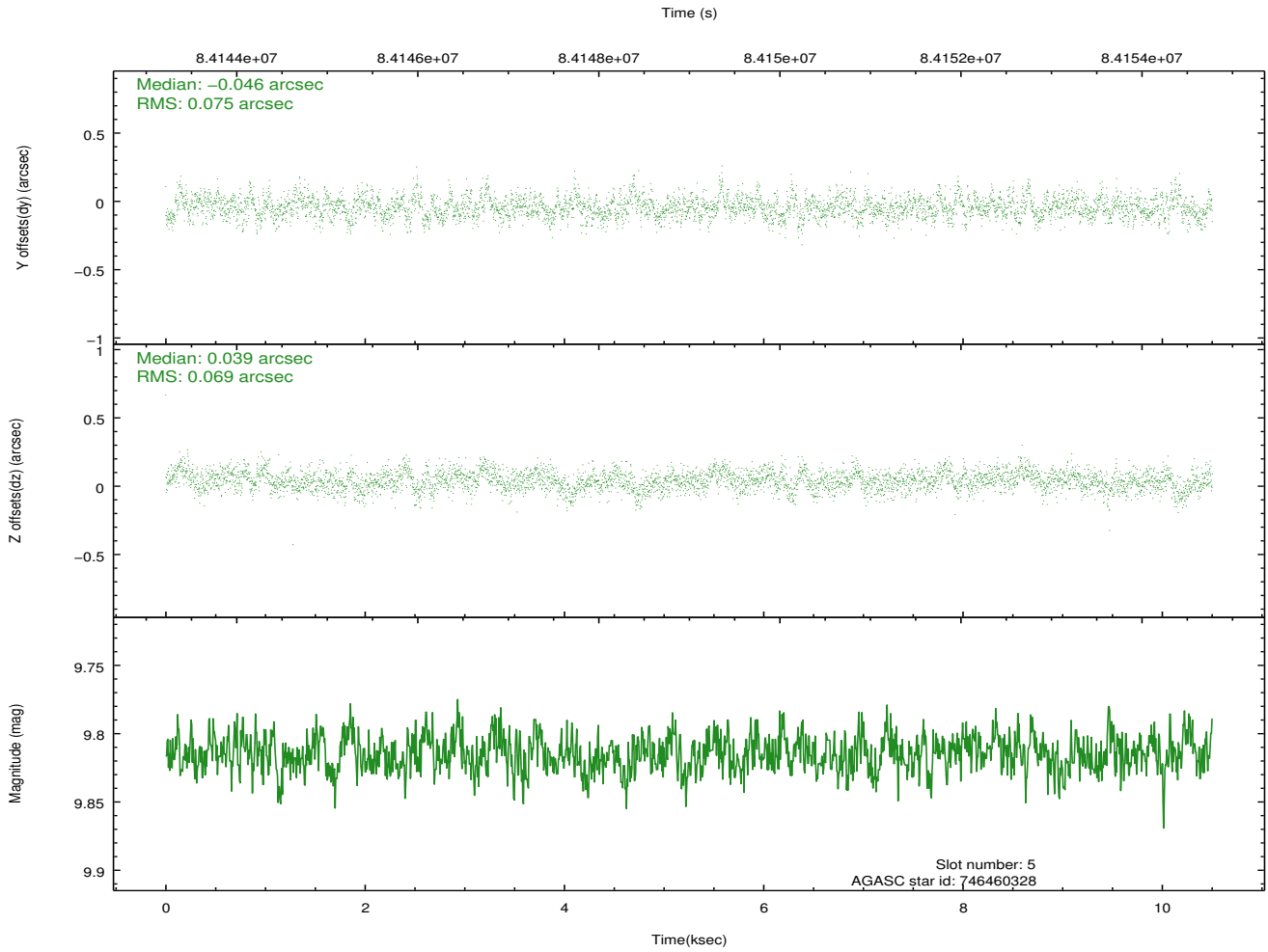
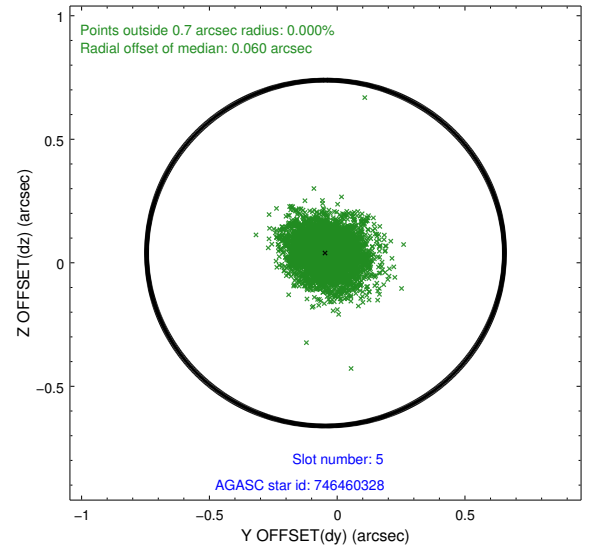
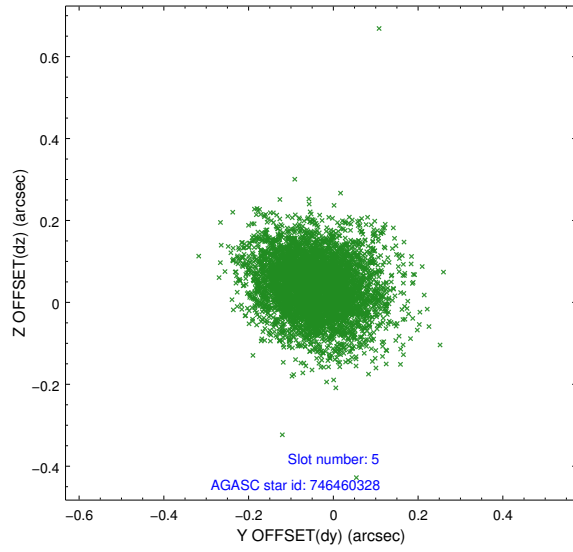
### 2.4.1 Slot 3



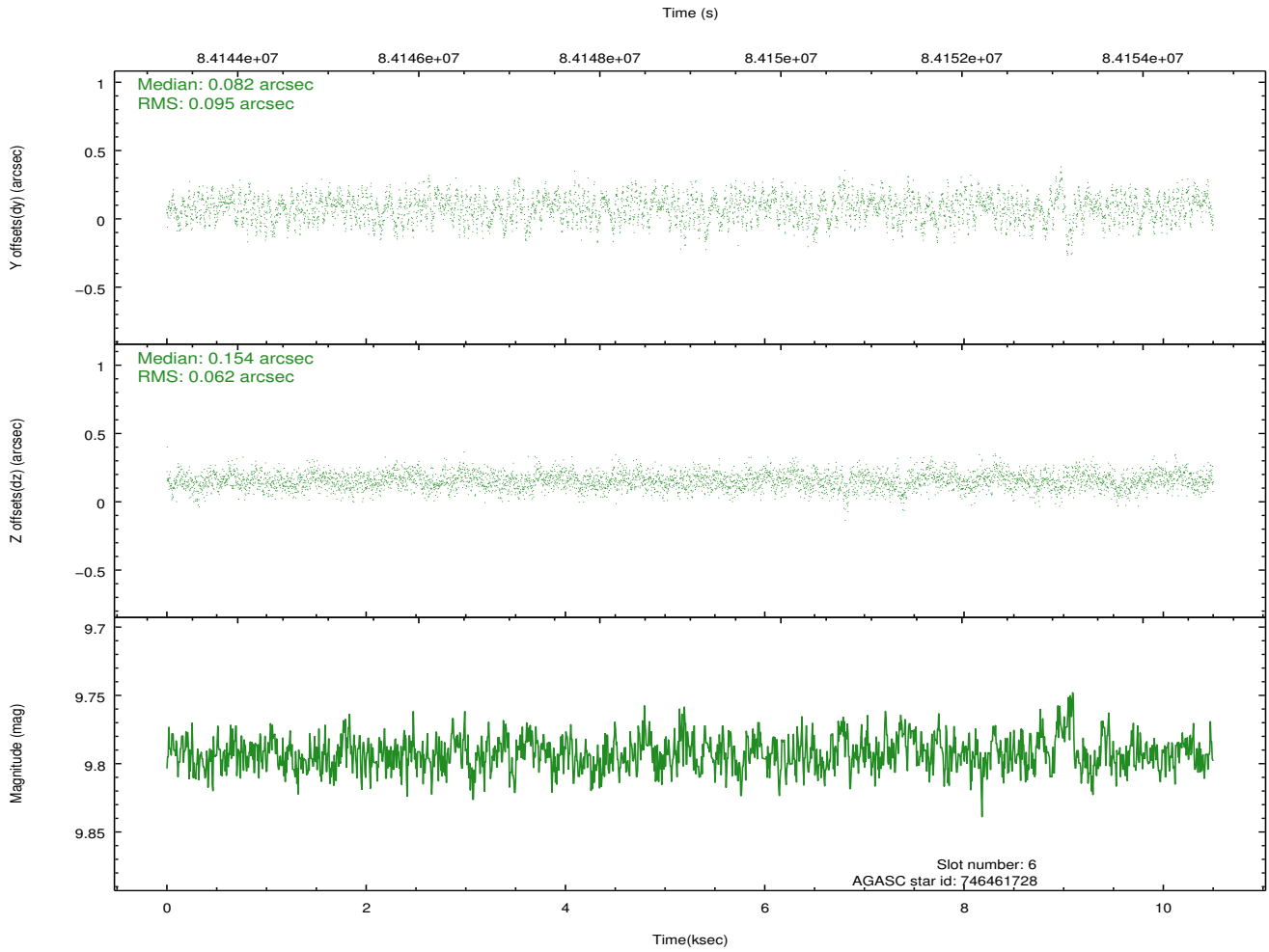
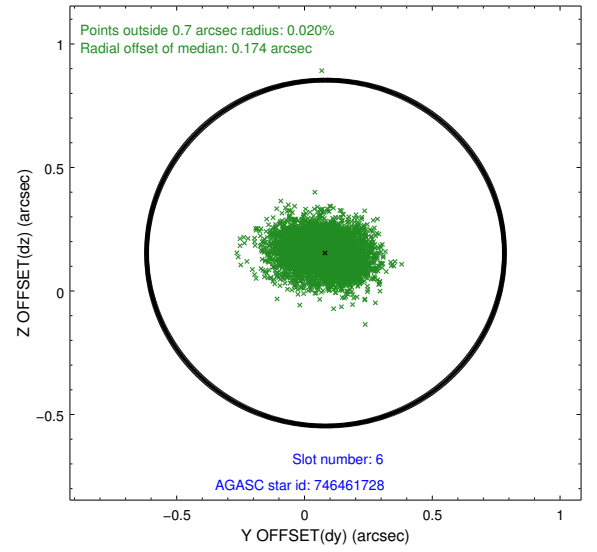
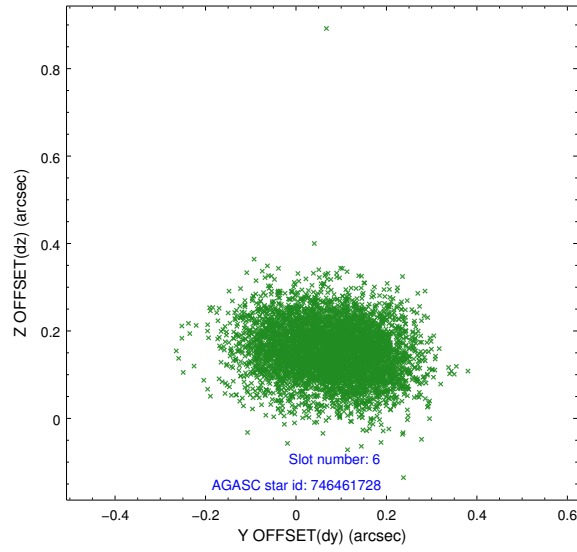
## 2.4.2 Slot 4



### 2.4.3 Slot 5

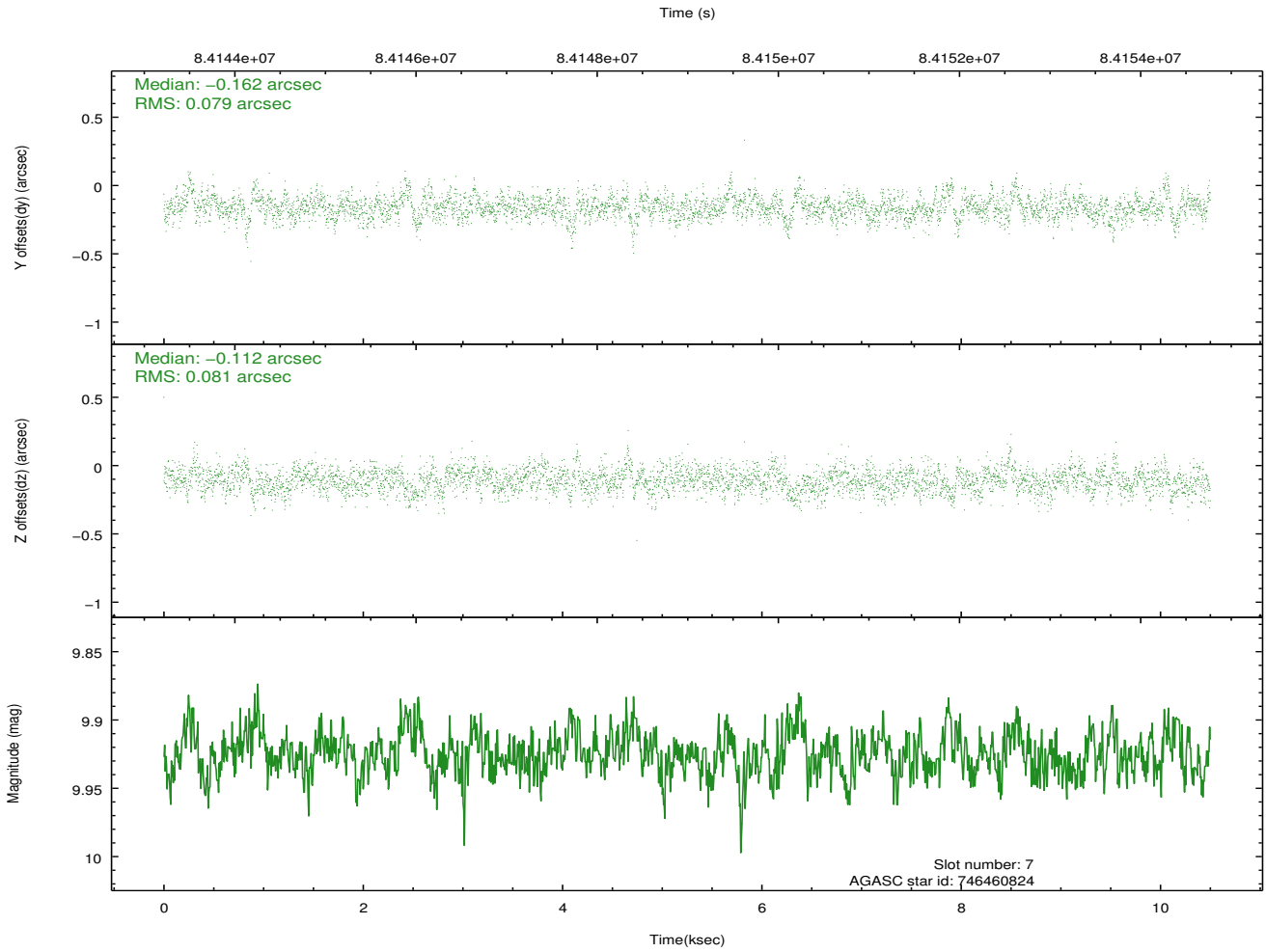
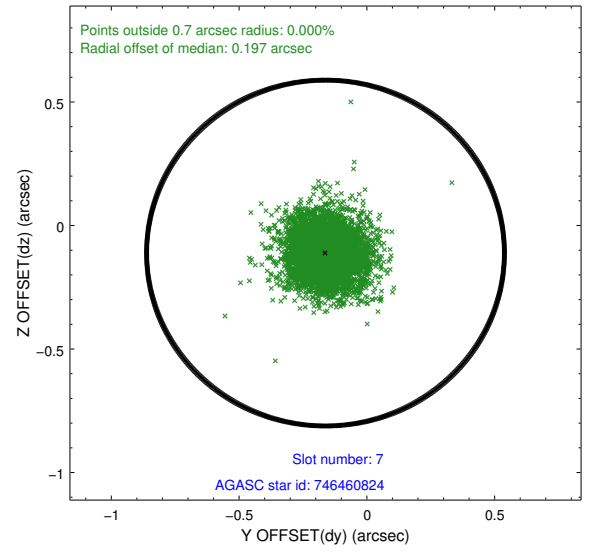
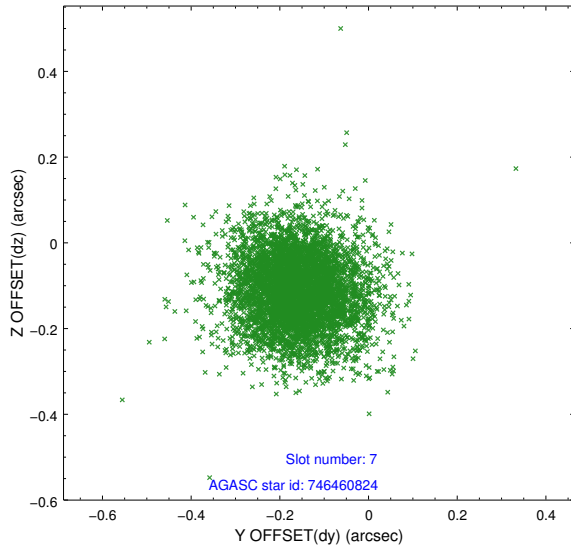


## 2.4.4 Slot 6



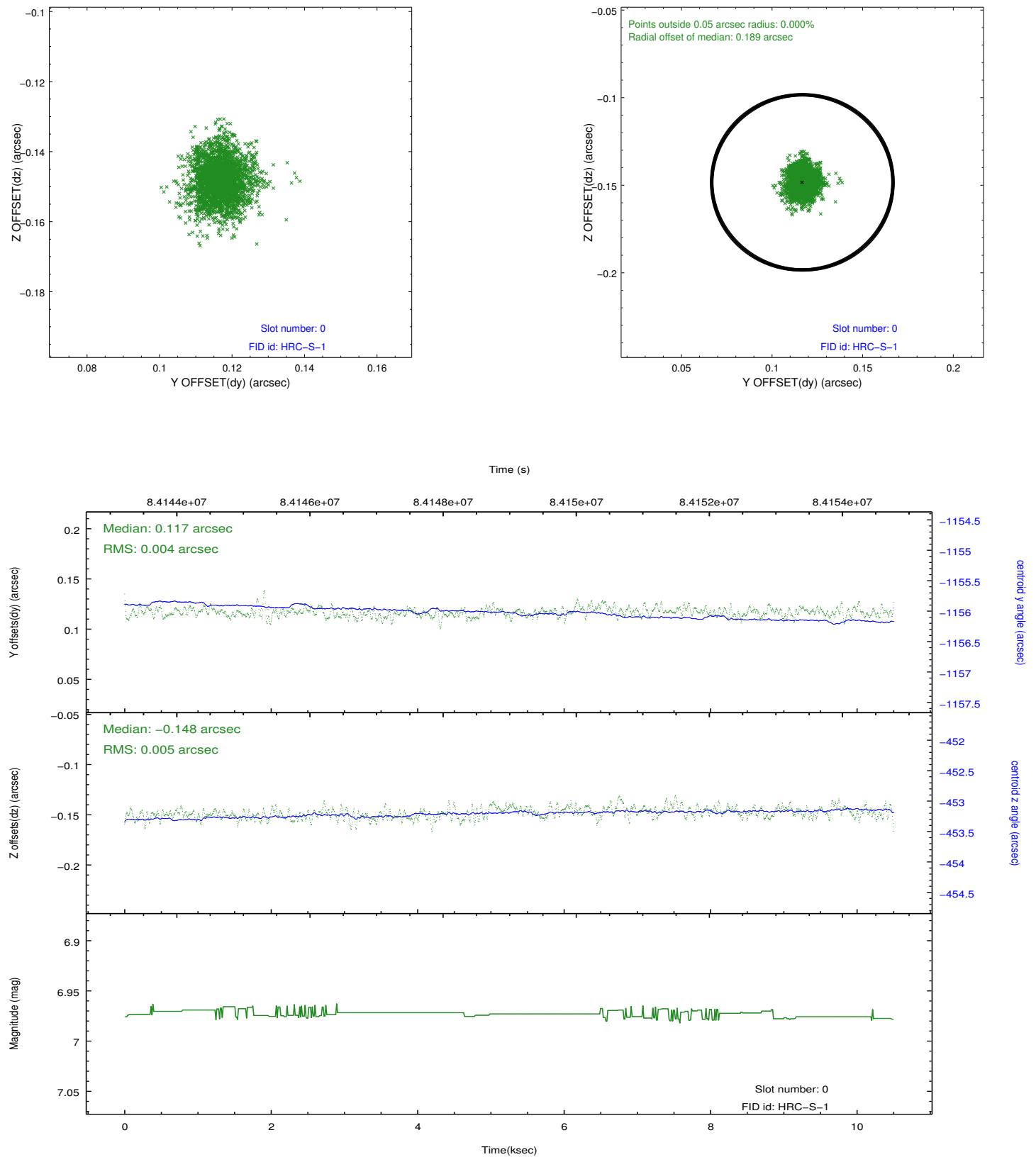


### 2.4.5 Slot 7

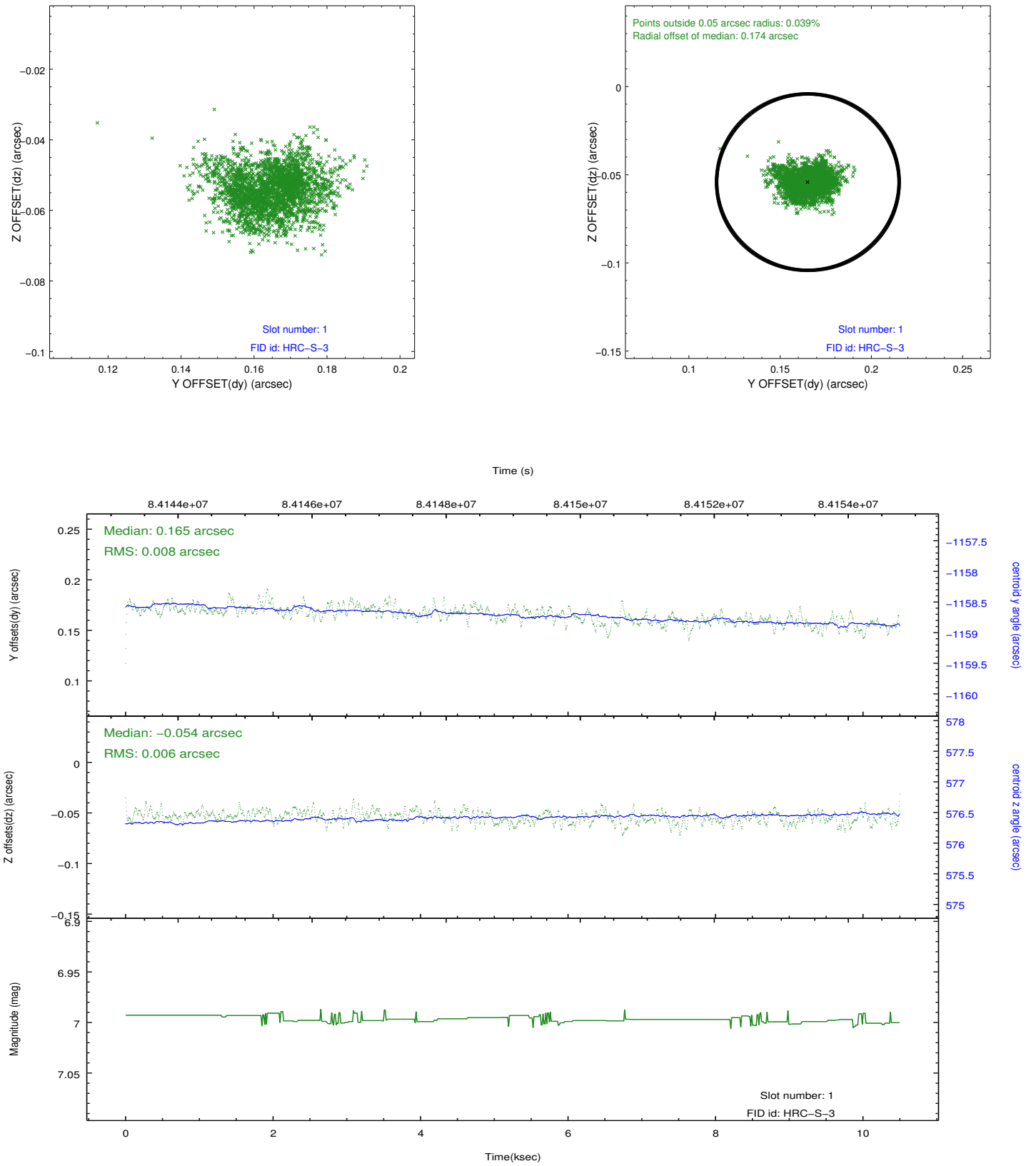


## 2.5 FID Slots

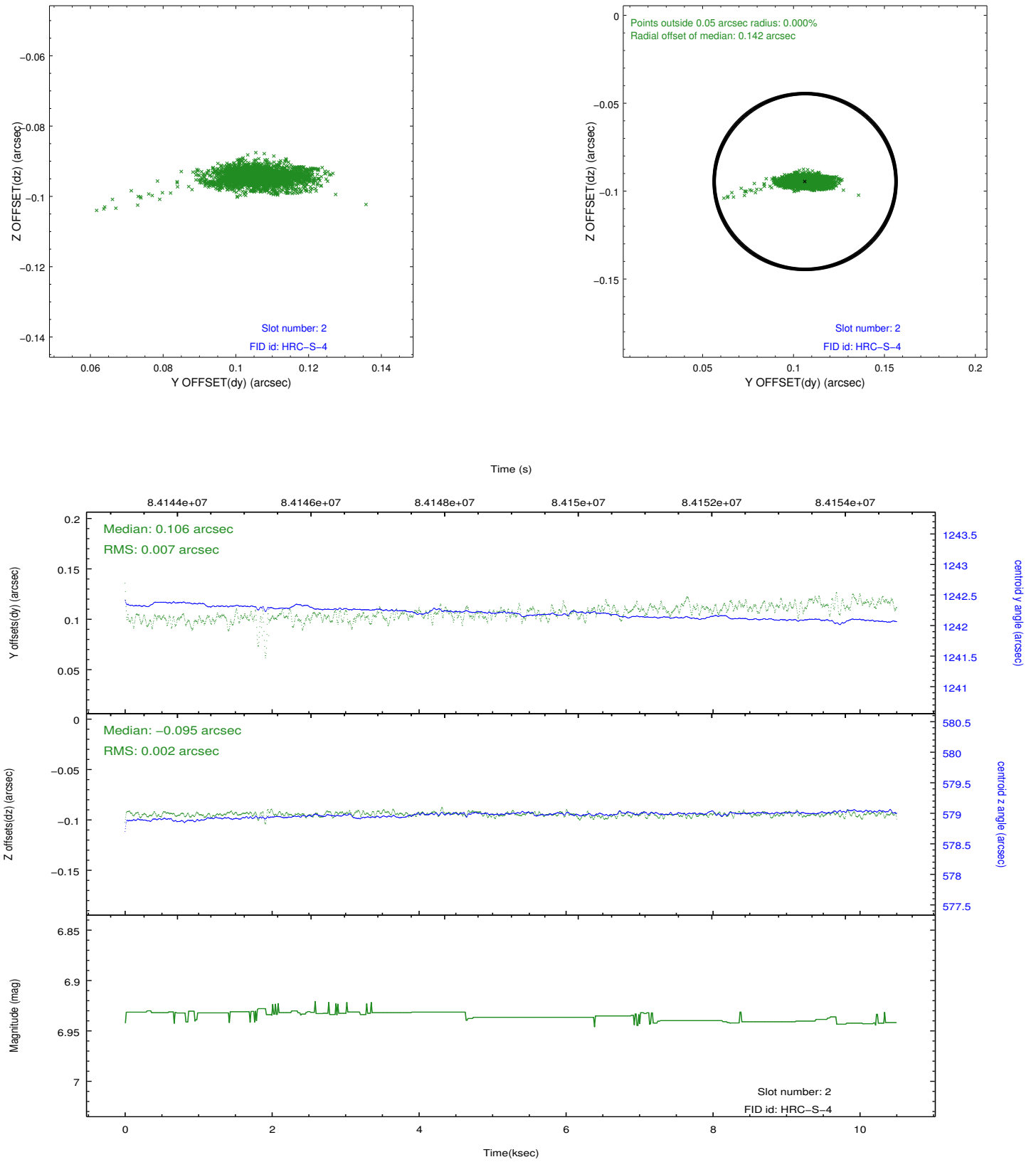
### 2.5.1 Slot 0



## 2.5.2 Slot 1



### 2.5.3 Slot 2



# A Summary

## A.1 Status

V&V Scientist	Jen Lauer
V&V Date (YYYY-MM-DD)	2012.09.07
V&V Edition	1
V&V Disposition and Status	OK
V&V Charge Time	10.497

## A.2 Comments

Charge time for this ObsId remains at previous value of 10.497 ks although with the current processing the charge time would have been 10.442 ksec.

=====

Monitor constraint violated: obsid 152 start time is 197 days after the start time of obsid 150, instead of the 80.0 - 115.0 required. Per CD0: All are OK. Monitor constraint was too tight.