

V&V Reference Report

L2 ASCDS Version : 8.1.1

Observation 1408 - L2 Version 6

Chandra X-Ray Center

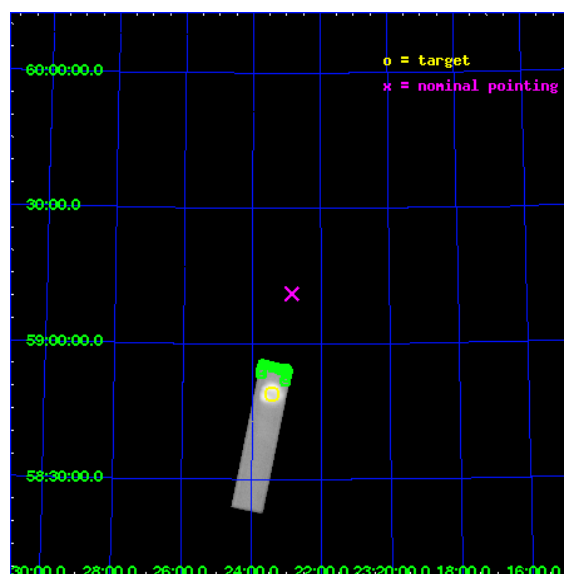
L2 Processing Date : Nov 26 2009

Contents

1	Front	2
2	OBI	3
2.1	OBI	3
2.1.1	Images	3
2.1.2	Parameters	4
2.1.3	Events	4
2.2	Compared Parameters	5
2.3	Aspect	6
2.4	Star Slots	9
2.4.1	Slot 3	9
2.4.2	Slot 4	10
2.4.3	Slot 5	11
2.4.4	Slot 6	12
2.4.5	Slot 7	13
2.5	FID Slots	14
2.5.1	Slot 0	14
2.5.2	Slot 1	15
2.5.3	Slot 2	16
3	Point Sources	17
A	Summary	18
A.1	Status	18
A.2	Comments	18

1 Front

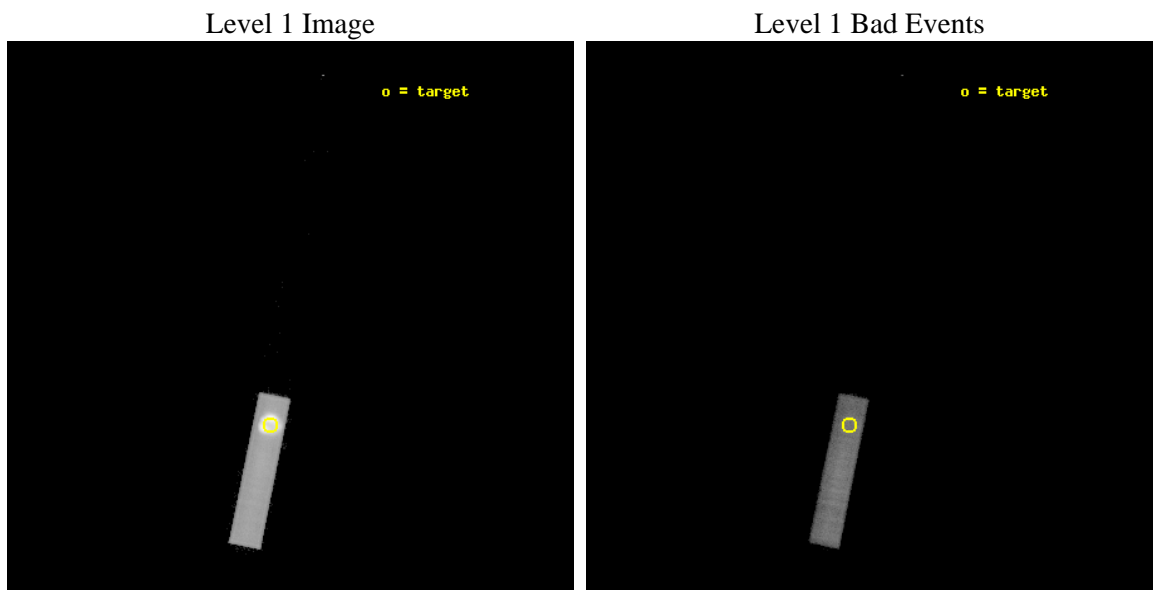
seq_num	580358	Sequence number
obs_id	1408	Observation id
title	HRC RESPONSE TO CASA	Proposal title
observer	Dr. CXC Calibration	Principal investigator
object	CAS A [HRC-S, Offsets=23,0,0 -Y MCP]	Source name
ra_targ	350.8575	Observer's specified target RA
dec_targ	58.814833	Observer's specified target Dec
ra_nom	350.71182484605	Nominal RA
dec_nom	59.185208471183	Nominal Dec
roll_nom	281.51529169574	Nominal Roll
revision	6	Processing version of data
ontime	6902.3502498865	[s]
livetime	6839.1847034492	Ontime multiplied by DTCOR
l2events	530125	Number of level 2 events



2 OBI

2.1 OBI

2.1.1 Images



2.1.2 Parameters

obi_num	0	Obi number	sched_exp_time	6703.100000	Scheduled observation exposure time
ascdsver	8.1.1	Processing system revision	ontime	6902.3502498865	[s]
caldbver	4.1.4	 	l1events	659466	Number of level 1 events
date	2009-11-26T05:42:33	Date and time of file creation			
revision	5	Processing version of data			

2.1.3 Events

Level 1 Events

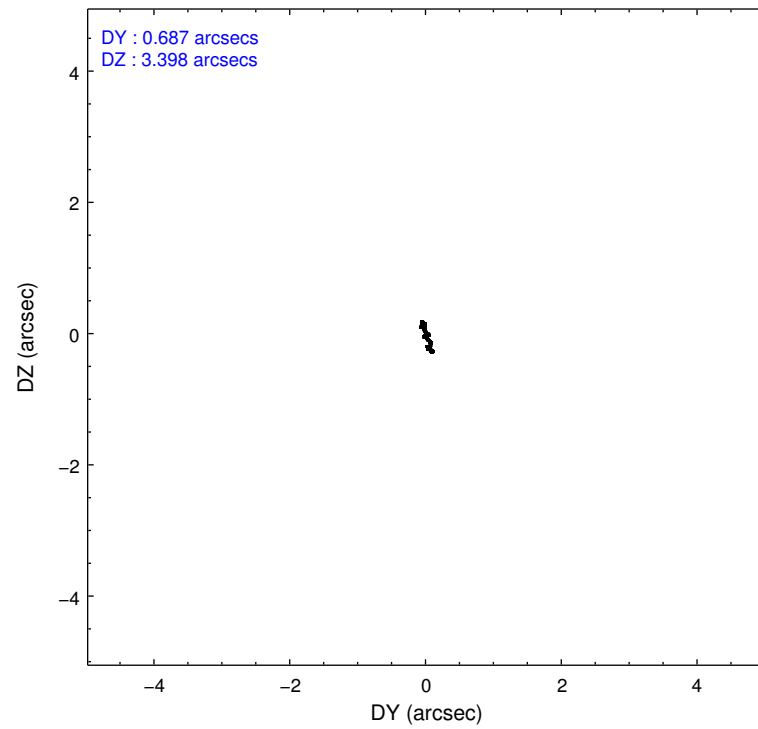
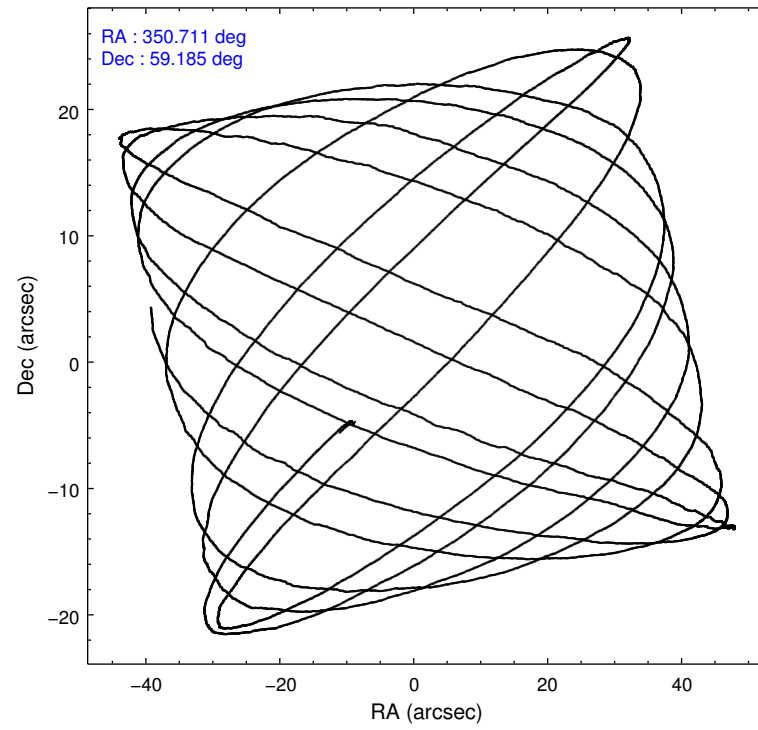
	segment 1	segment 2	segment 3
level 1 events	109	173	659184
rejected events	42	107	101679
rejected %	38%	61%	15%

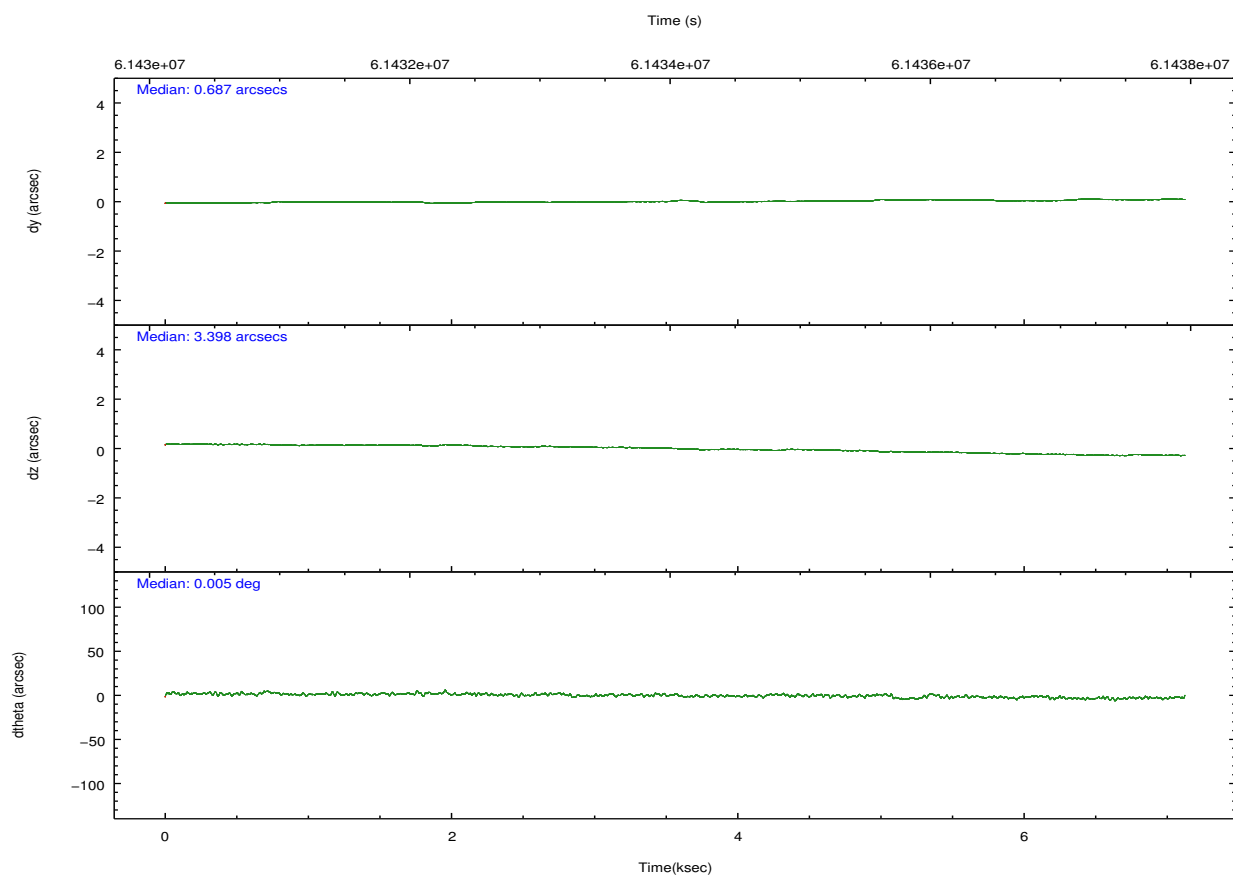
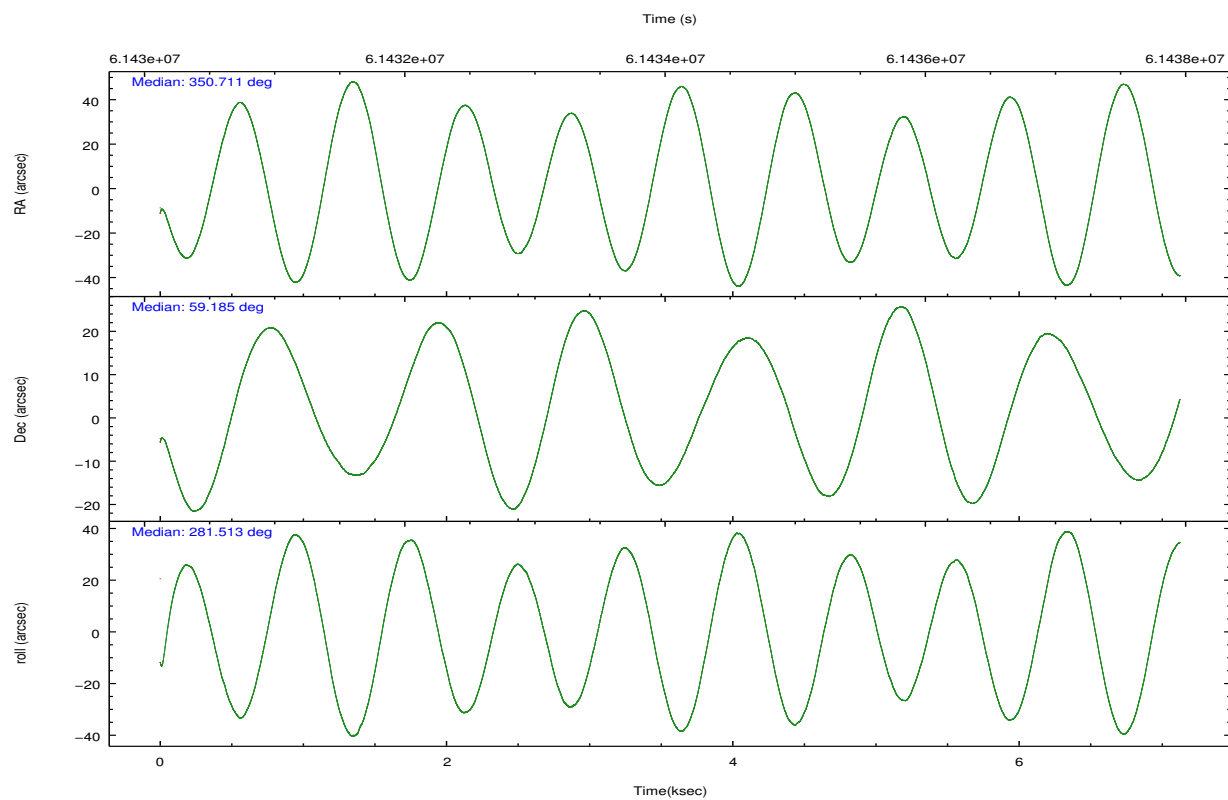
2.2 Compared Parameters

Parameter	Planned	Actual
Instrument	HRC	HRC
Detector	HRC-S	HRC-S
Grating	NONE	NONE
Data mode	OBSERVING	OBSERVING
Observation mode	POINTING	POINTING
Pointing RA	350.673056	350.7118248460512
Pointing Dec	59.206456	59.18520847118292
Pointing Roll	281.481277	281.5152916957387
SIM focus pos (mm)	-1.429586	-1.428180813131781
SIM defocus (mm)	0.1037507710433287	0.1051558262725154
SIM translation stage pos (mm)	250.455976	250.466033080201
SIM translation stage offset (mm)	0	-0.01005468664627074
Observation start time	61430897.184000	61429603.963396
Observation start date	1999-12-13T00:07:13	1999-12-12T23:46:43
Observation end time	61437600.184000	61437734.26369
Observation end date	1999-12-13T01:58:56	1999-12-13T02:02:14

Parameter	Planned	Actual
Obspar format version number	6	6
Obspar file type	PREDICTED	ACTUAL
Obspar update status	NONE	UPDATED

2.3 Aspect



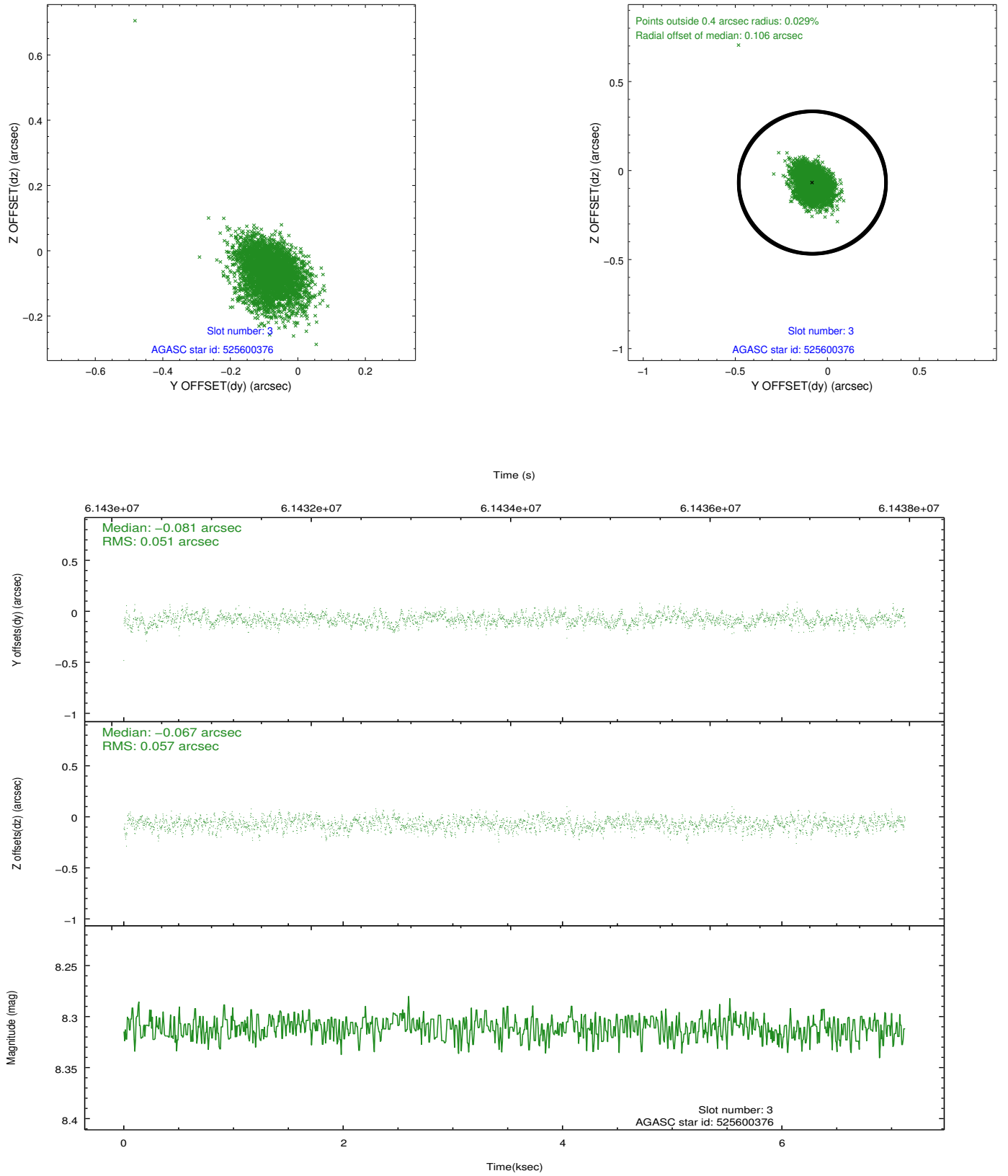


Slot Statistics

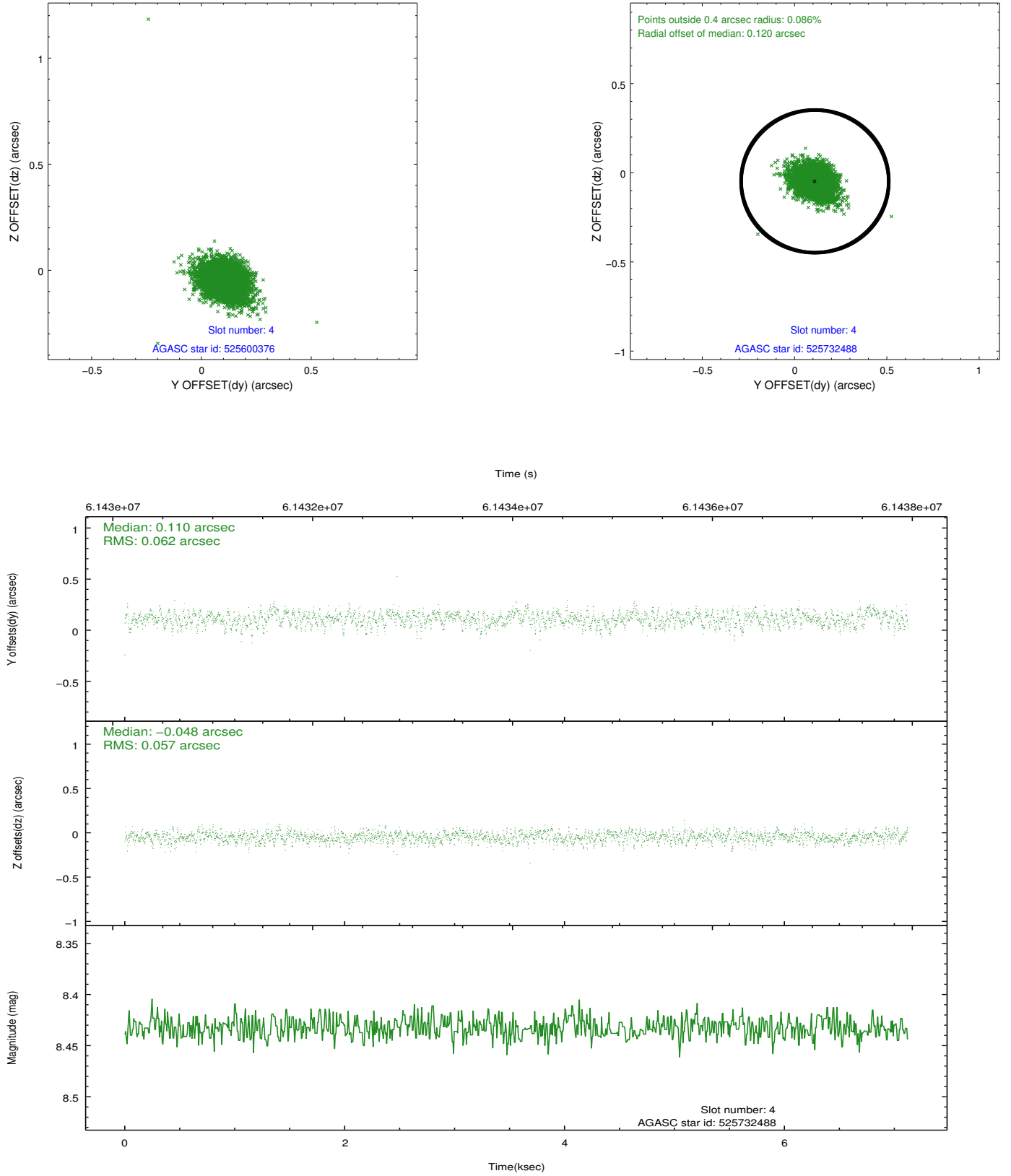
slot	status	id	mag	n_pts	med_dy	med_dz	dr1	dr2	ra	dec	mean_y	mean_z
0	FID	HRC-S-1	7.01	3476	0.166	-0.052	0.010	0.022	0.000000	0.000000	-1154.73	-451.56
1	FID	HRC-S-3	7.03	3476	0.069	-0.129	0.011	0.021	0.000000	0.000000	-1157.73	577.76
2	FID	HRC-S-4	7.00	3476	0.154	-0.116	0.006	0.010	0.000000	0.000000	1243.33	580.27
3	GUIDE	525600376	8.31	3476	-0.081	-0.067	0.079	0.130	349.956653	59.633357	-1772.88	-969.14
4	GUIDE	525732488	8.43	3475	0.110	-0.048	0.085	0.140	350.087090	58.516915	2208.02	-1571.59
5	GUIDE	525734128	9.30	3473	-0.022	0.078	0.086	0.144	350.288836	59.782812	-2173.65	-267.88
6	GUIDE	525731480	9.54	3470	0.073	0.029	0.106	0.173	351.647209	58.687294	2180.37	1418.31
7	GUIDE	525732896	9.67	3474	-0.076	0.014	0.096	0.159	351.456486	59.410070	-440.85	1555.93

2.4 Star Slots

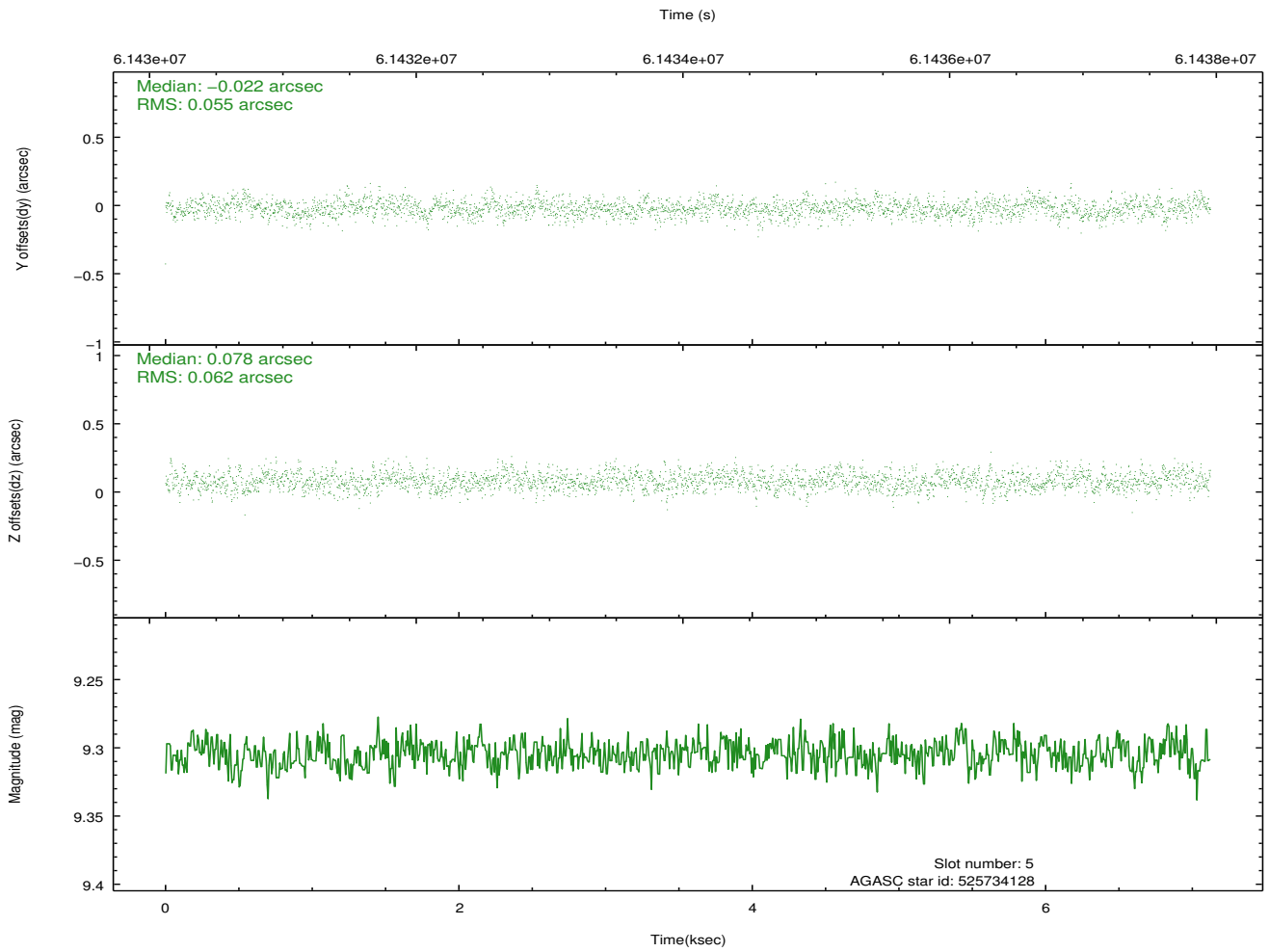
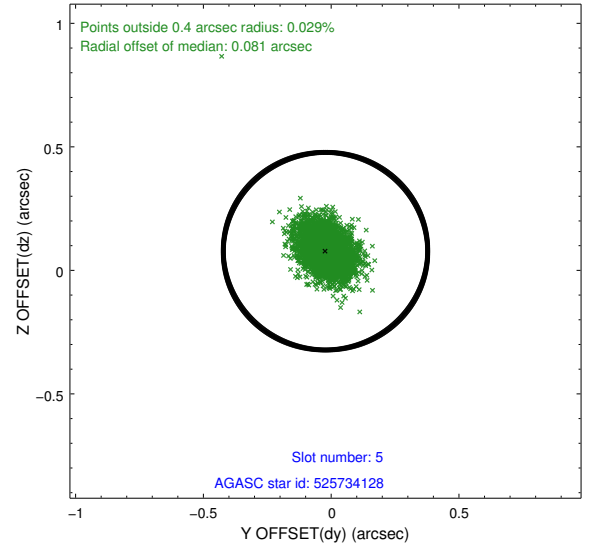
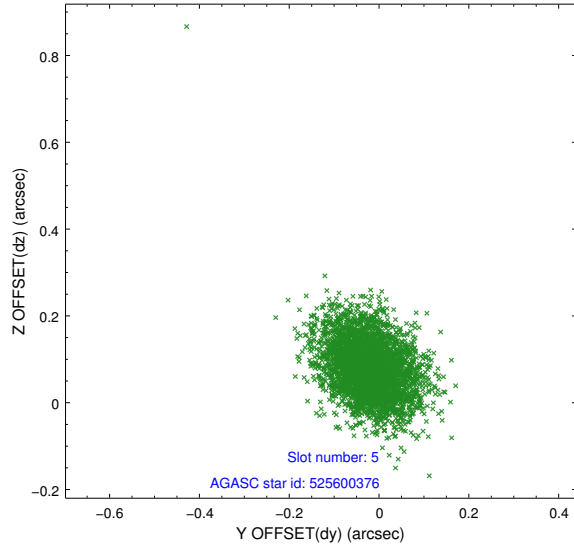
2.4.1 Slot 3



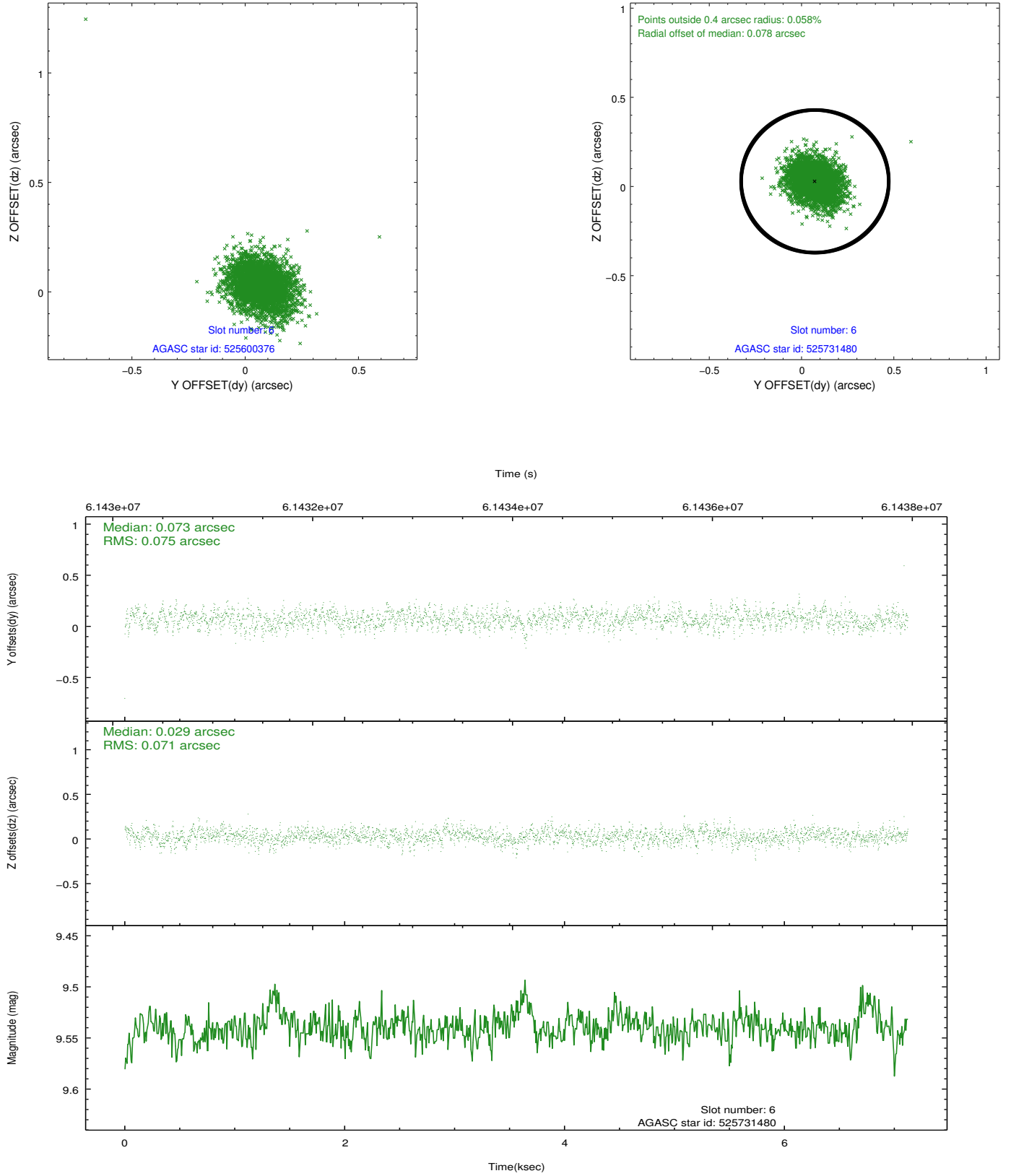
2.4.2 Slot 4



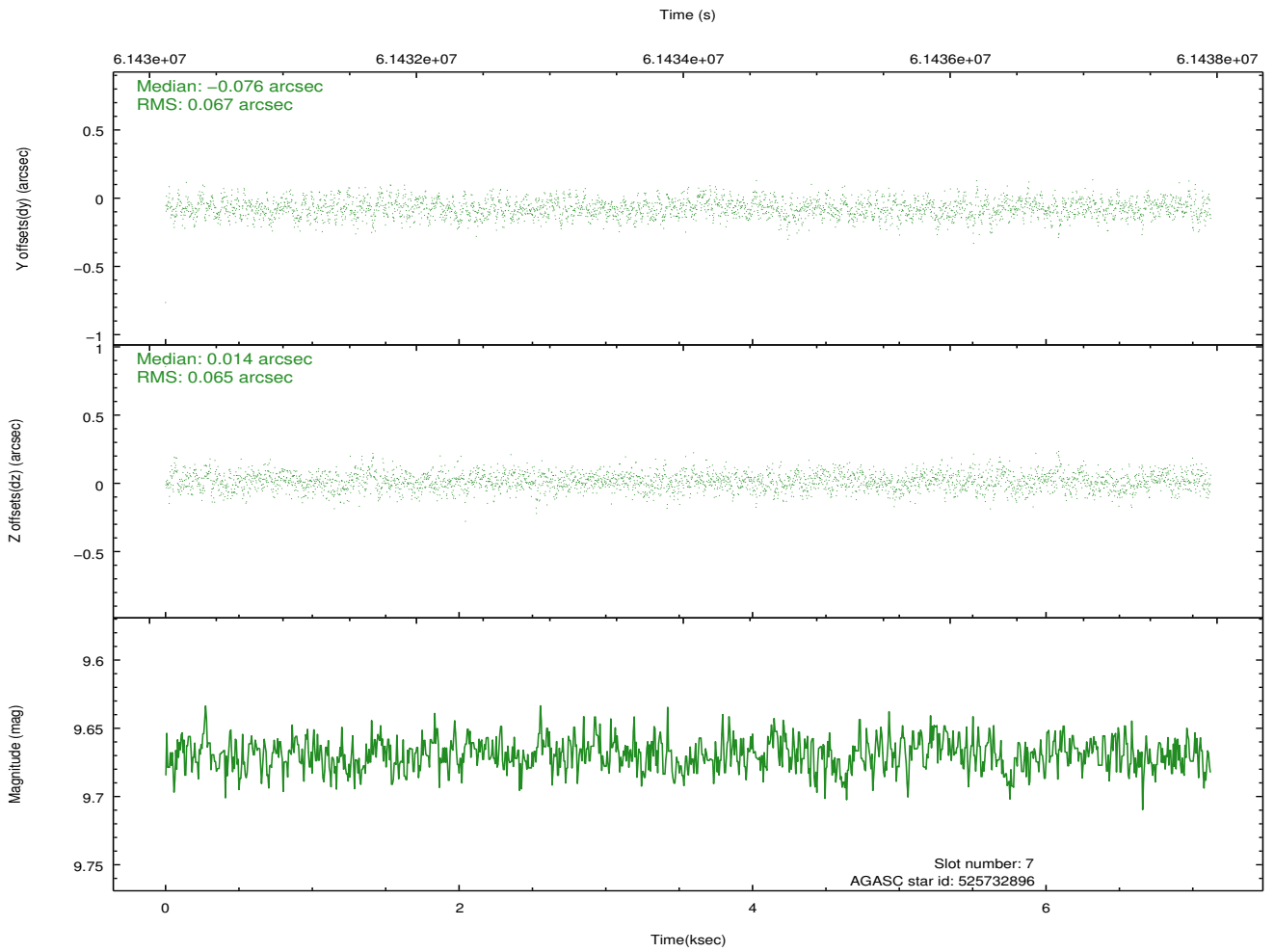
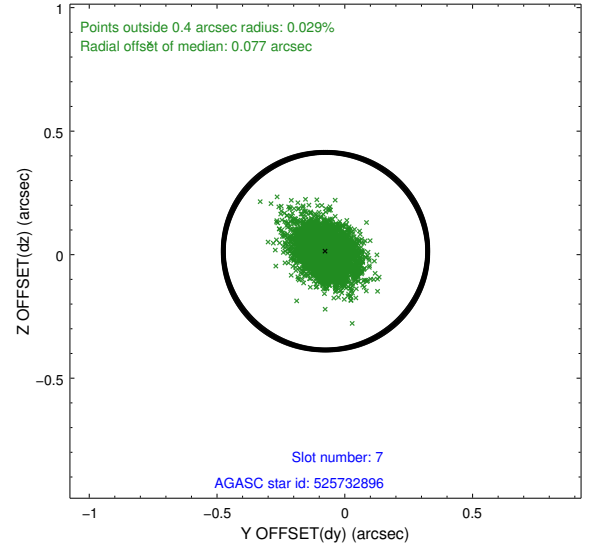
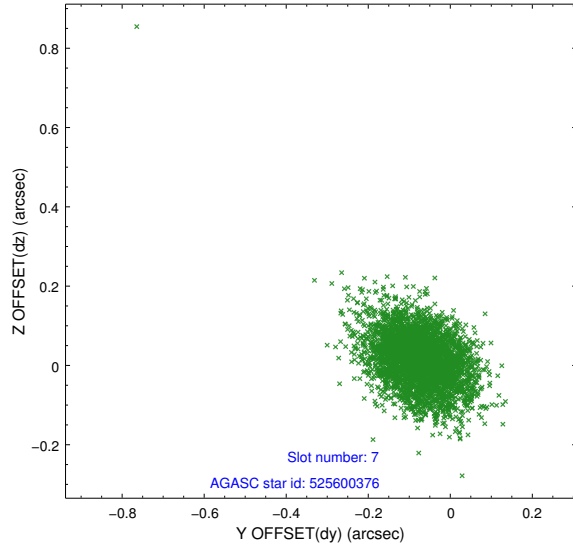
2.4.3 Slot 5



2.4.4 Slot 6

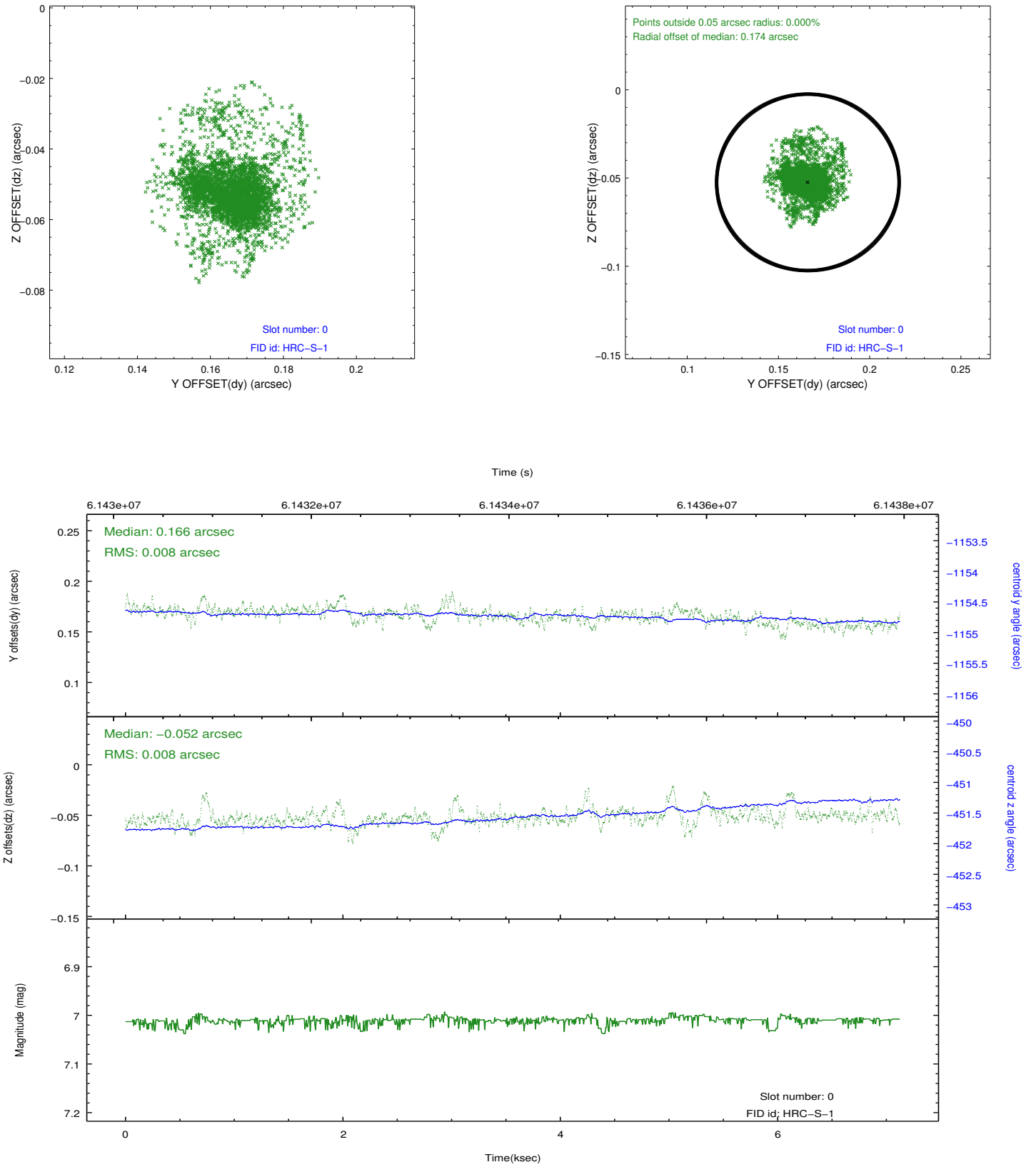


2.4.5 Slot 7

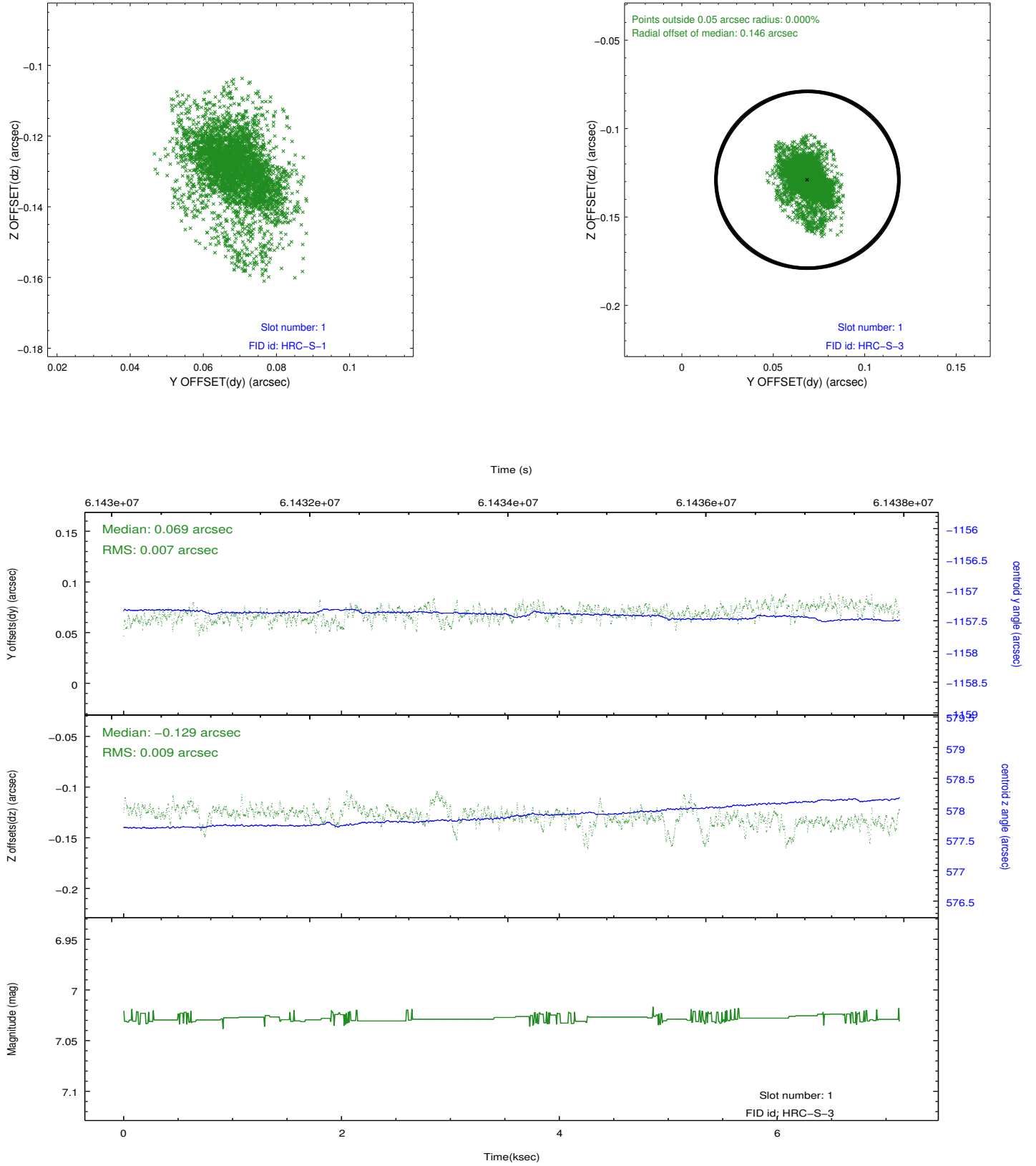


2.5 FID Slots

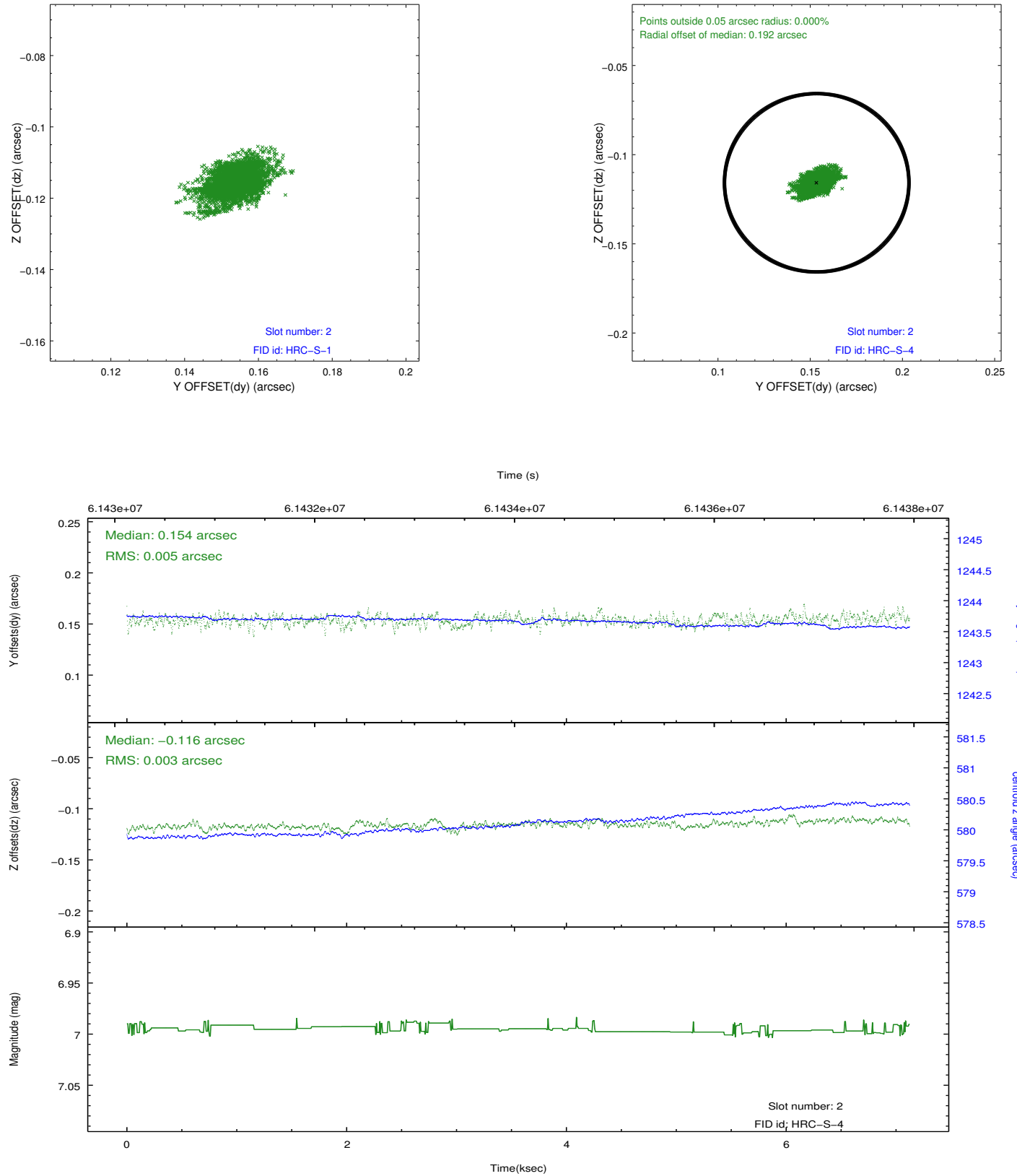
2.5.1 Slot 0



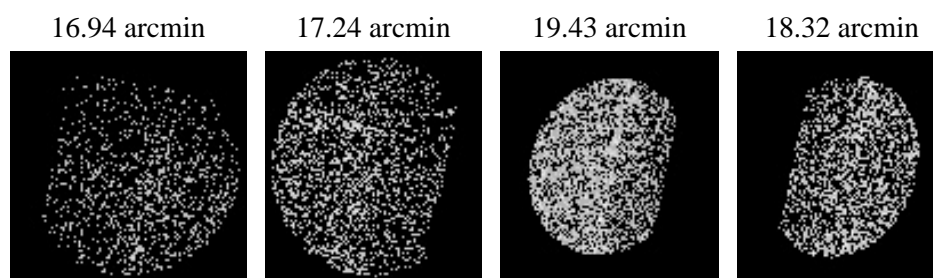
2.5.2 Slot 1



2.5.3 Slot 2



3 Point Sources



A Summary

A.1 Status

V&V Scientist	Joy Nichols
V&V Date (YYYY-MM-DD)	2009.11.30
V&V Edition	1
V&V Disposition and Status	OK
V&V Charge Time	6.865

A.2 Comments

Charge time:

Charge time for this ObsId remains at previous value of 6.865 ks.

=====HRC-S standard candle. Off-axis.