

V&V Reference Report

L2 ASCDS Version : 8.4.5

Observation 1515 - L2 Version 6
Chandra X-Ray Center

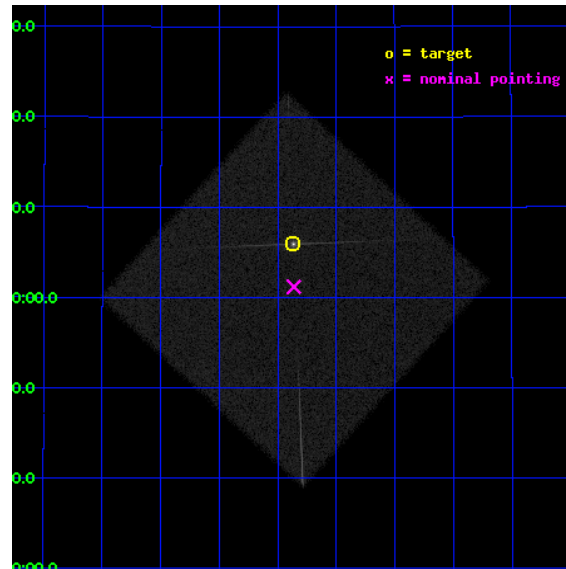
L2 Processing Date : Aug 21 2012

Contents

1	Front	2
2	OBI	3
2.1	OBI	3
2.1.1	Images	3
2.1.2	Parameters	4
2.1.3	Events	4
2.2	Compared Parameters	5
2.3	Aspect	6
2.4	Star Slots	9
2.4.1	Slot 3	9
2.4.2	Slot 4	10
2.4.3	Slot 5	11
2.4.4	Slot 6	12
2.4.5	Slot 7	13
2.5	FID Slots	14
2.5.1	Slot 0	14
2.5.2	Slot 1	15
2.5.3	Slot 2	16
3	Gratings	17
3.1	LETG Arm	17
A	Summary	19
A.1	Status	19
A.2	Comments	19

1 Front

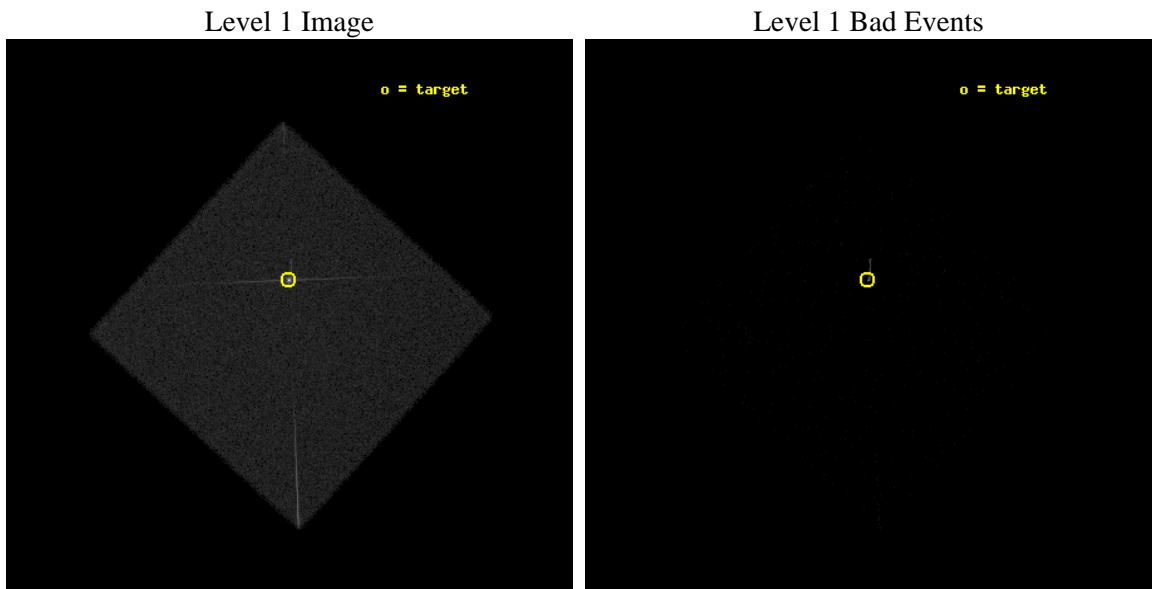
seq_num	280465	Sequence number
obs_id	1515	Observation id
title	GRATINGS CALIBRATION OBSERVATIONS OF A SOFT CONTINUUM: HZ43	Propos
observer	Dr. CXC Calibration	Principal investigator
object	HZ43	Source name
ra_targ	199.092083	Observer's specified target RA [deg]
dec_targ	29.099	Observer's specified target Dec [deg]
ra_nom	199.09042535906	Nominal RA [deg]
dec_nom	29.01994012619	Nominal Dec [deg]
roll_nom	87.57575195067	Nominal Roll [deg]
revision	6	Processing version of data
ontime	5421.4814473763	[s]
livetime	5387.8213488869	Ontime multiplied by DTCOR
l2events	175371	Number of level 2 events



2 OBI

2.1 OBI

2.1.1 Images



2.1.2 Parameters

obi_num	0	Obi number	sched_exp_time	5000.000000	[s] Scheduled observation exposure time
ascdsver	8.4.5	Processing system revision	ontime	5421.4814473763	[s]
caldsver	4.5.1.1	 	l1events	295318	Number of level 1 events
date	2012-08-22T00:45:12	Date and time of file creation			
revision	6	Processing version of data			

2.1.3 Events

Level 1 Events

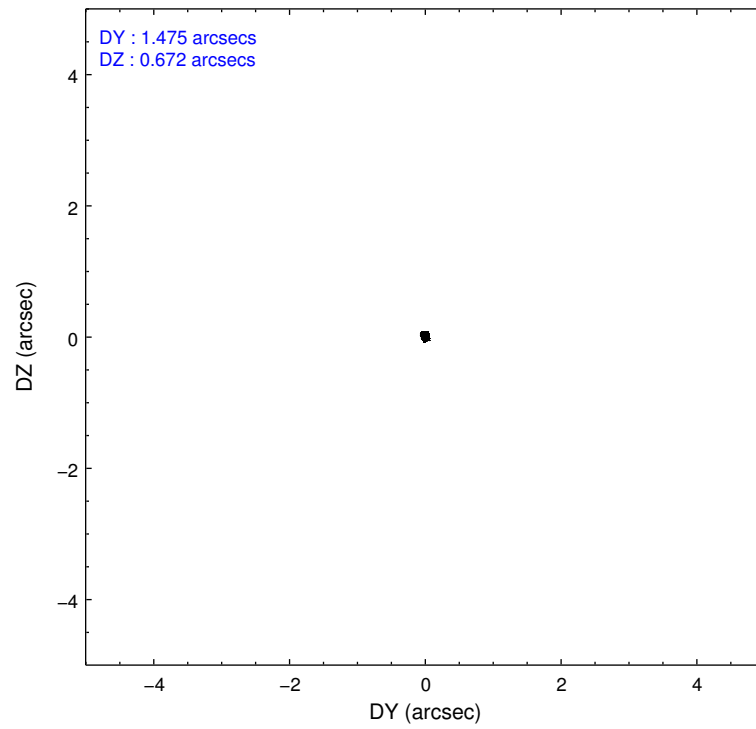
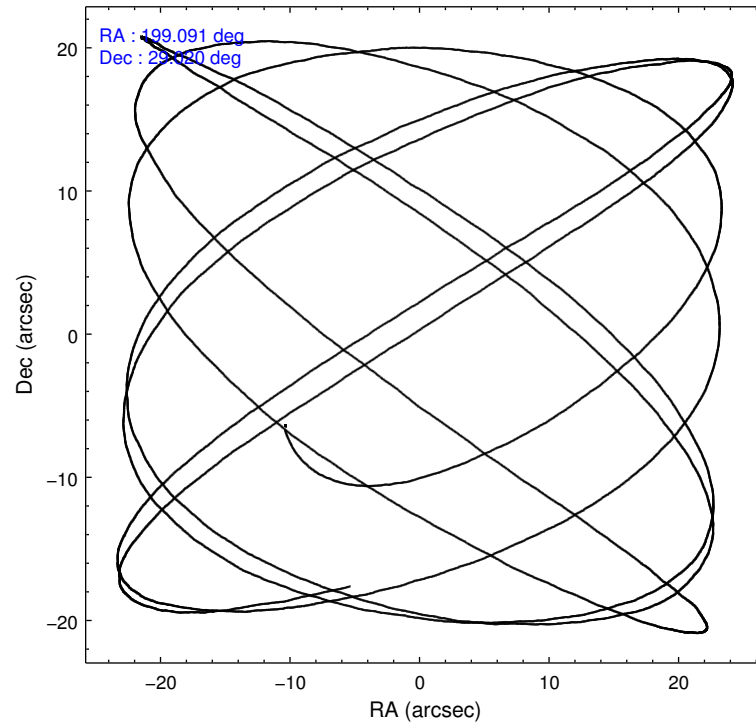
	segment 0
level 1 events	295318
rejected events	37942
rejected %	12%

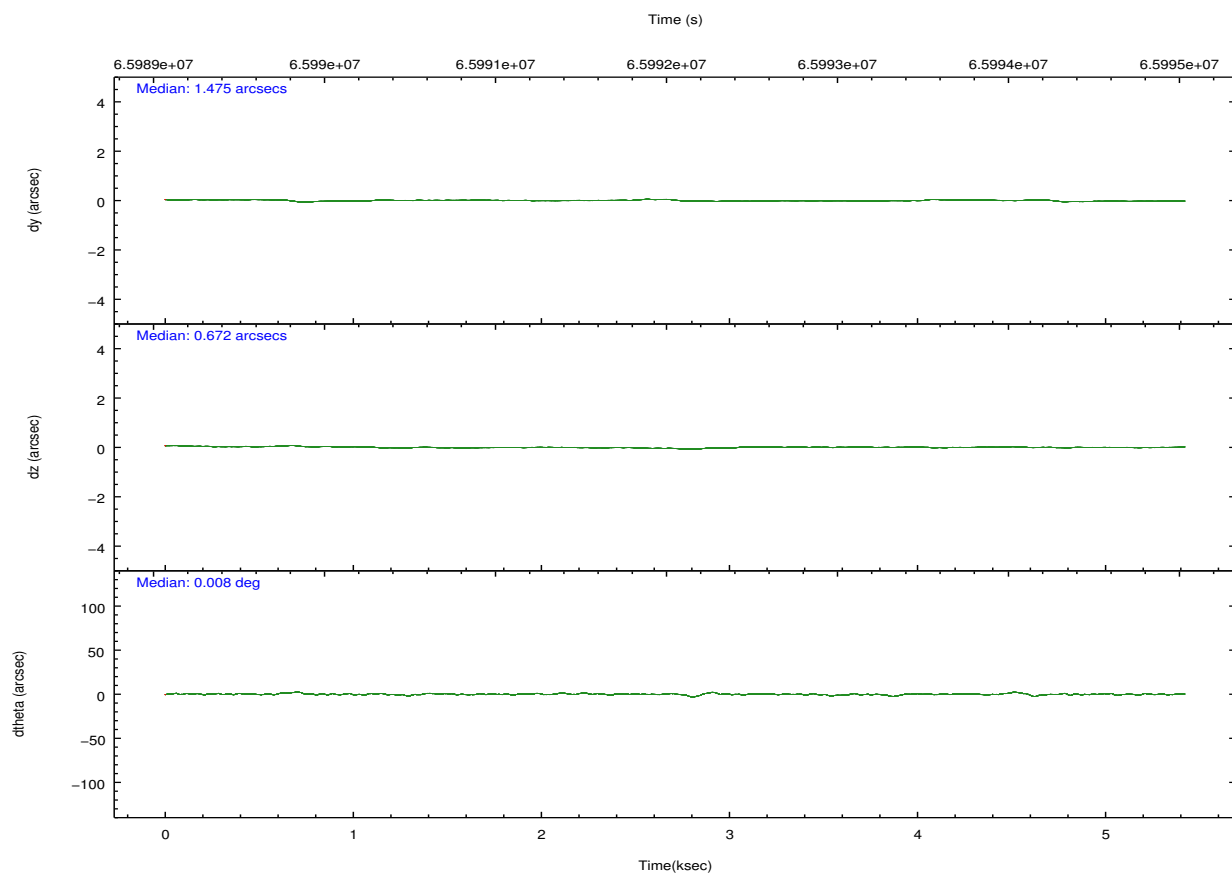
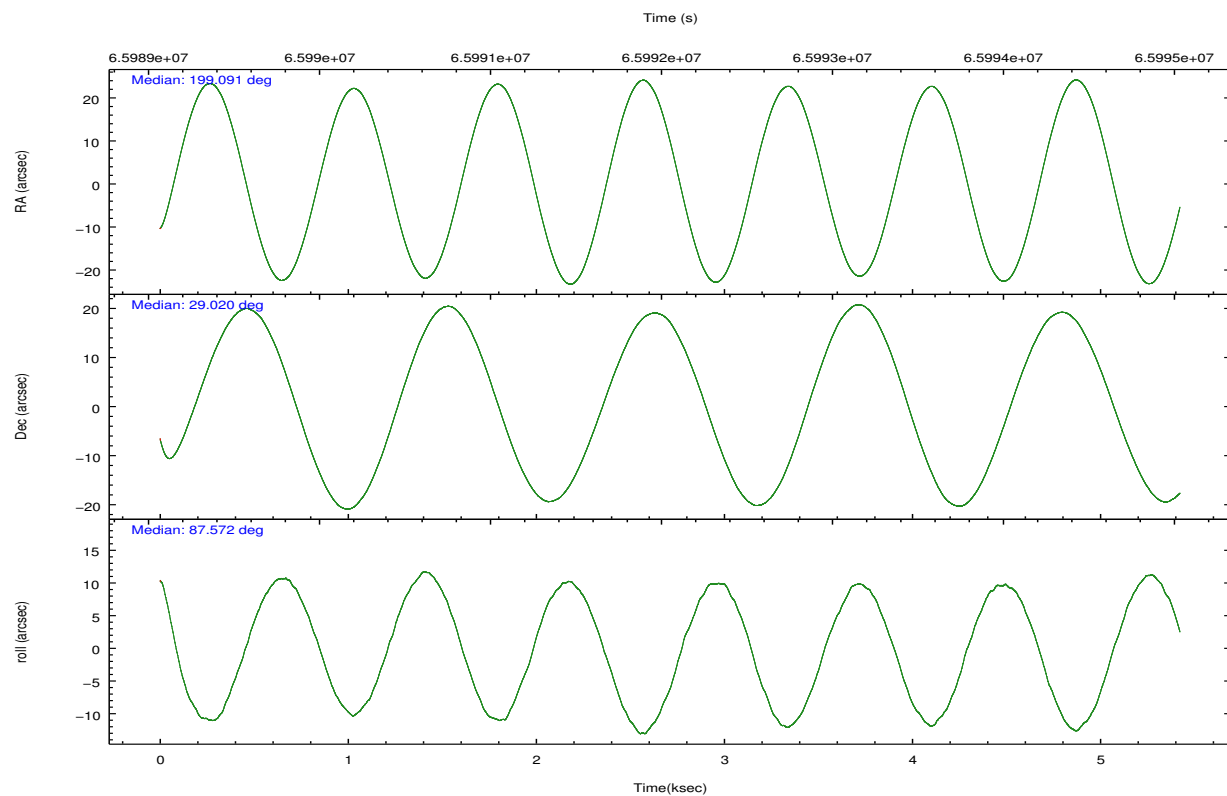
2.2 Compared Parameters

Parameter	Planned	Actual
Instrument	HRC	HRC
Detector	HRC-I	HRC-I
Grating	LETG	LETG
Data mode	OBSERVING	OBSERVING
Observation mode	POINTING	POINTING
[deg] Pointing RA	199.105212	199.090425359058
[deg] Pointing Dec	28.995785	29.01994012618957
[deg] Pointing Roll	87.664053	87.57575195066974
[mm] SIM focus pos	-1.040293	-1.038866356238299
[mm] SIM defocus	0	0.001426264420575141
[mm] SIM translation stage pos	126.985494	126.9829799899862
[mm] SIM translation stage offset	0	0.002508901615314585
[s] Observation start time (MET)	65989762.184000	65988605.79135
Observation start date	2000-02-03T18:28:18	2000-02-03T18:10:05
[s] Observation end time (MET)	65994762.184000	65994896.216579
Observation end date	2000-02-03T19:51:38	2000-02-03T19:54:56

Parameter	Planned	Actual
Obspar format version number	7	7
Obspar file type	PREDICTED	ACTUAL
Obspar update status	NONE	UPDATED

2.3 Aspect



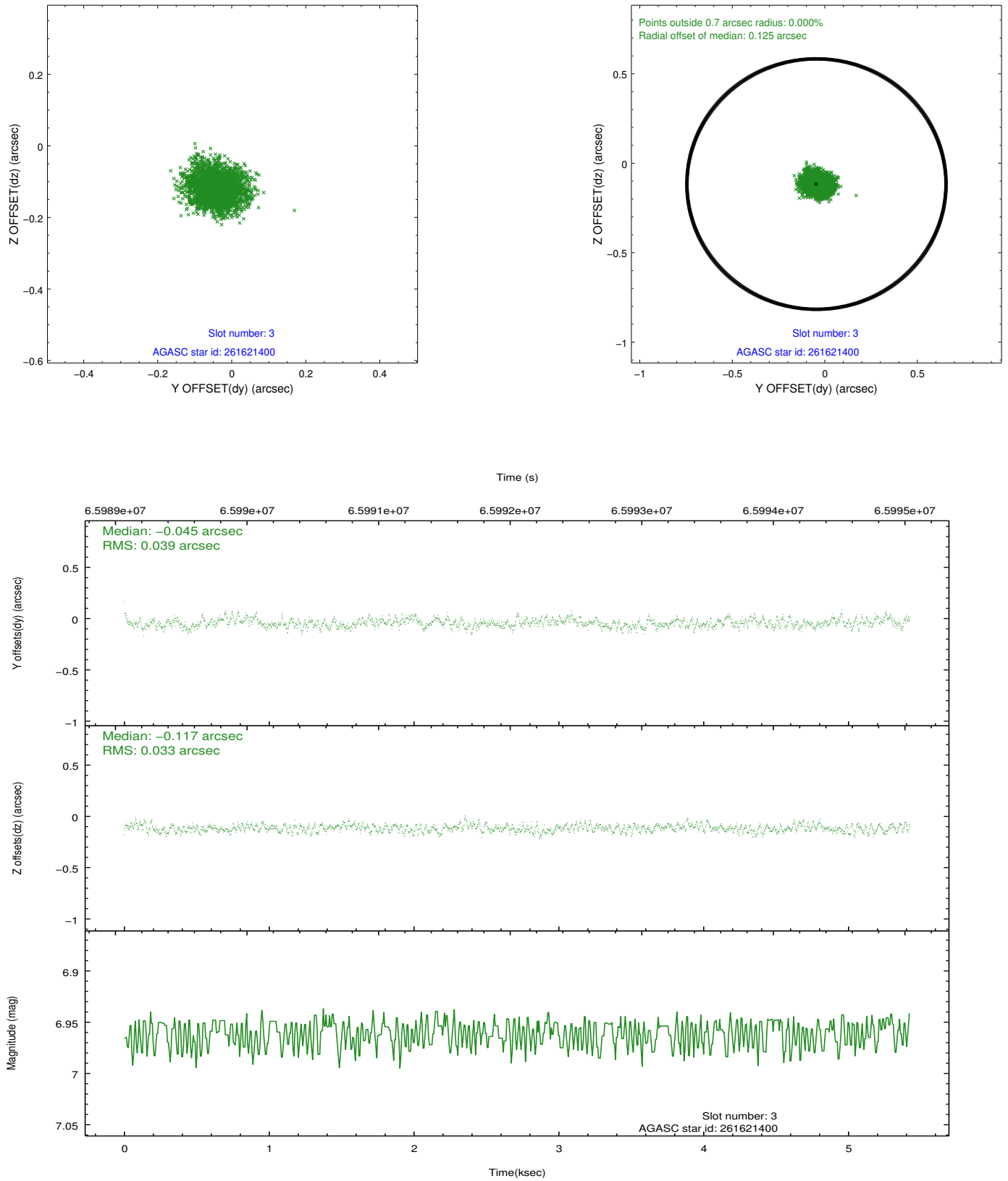


Slot Statistics

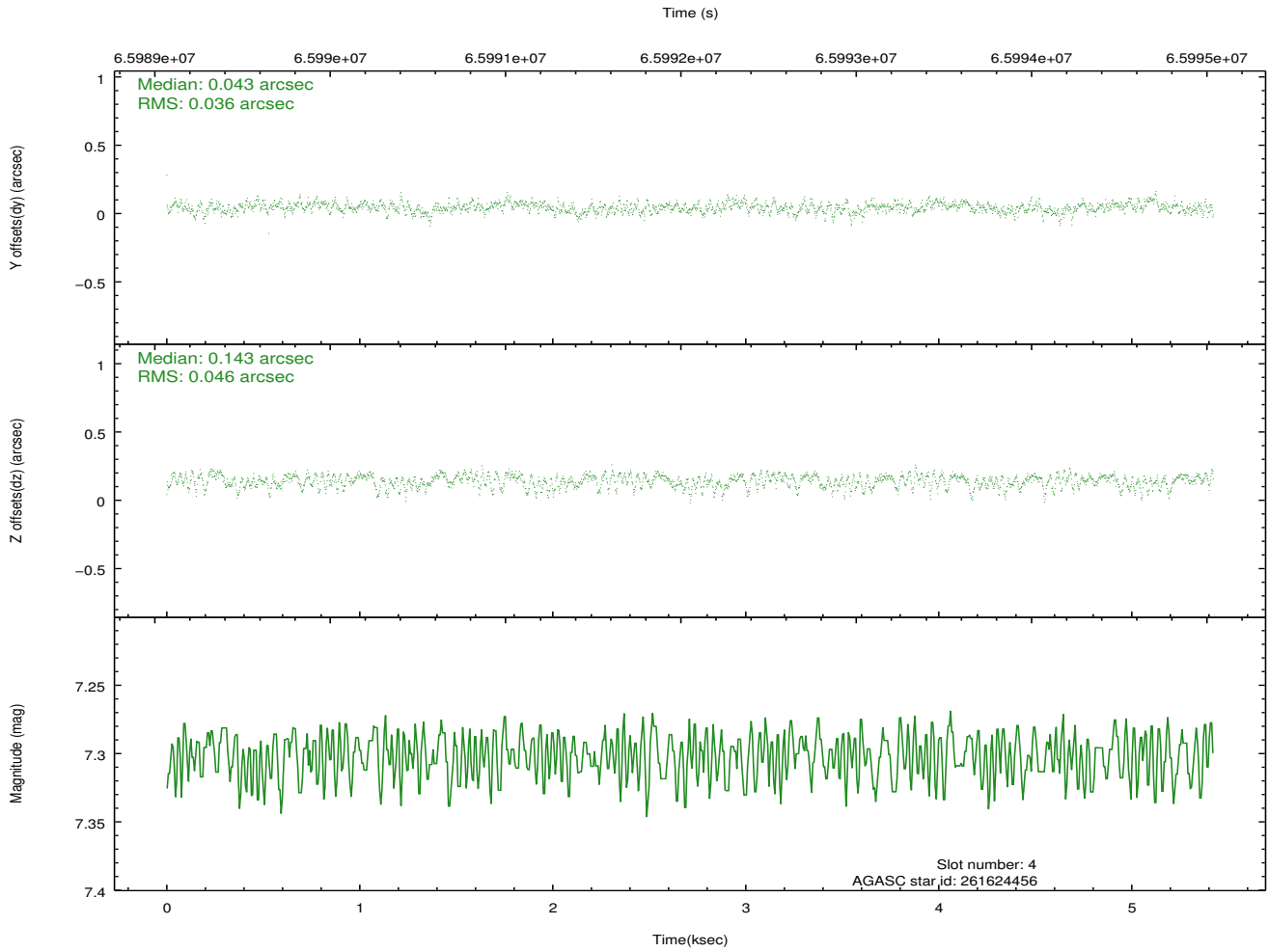
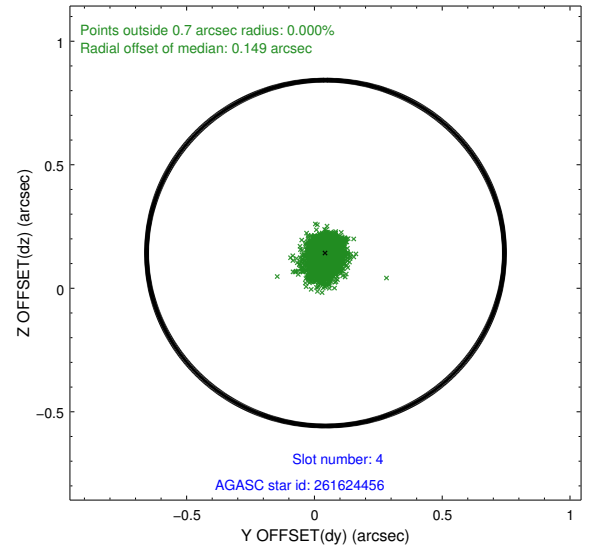
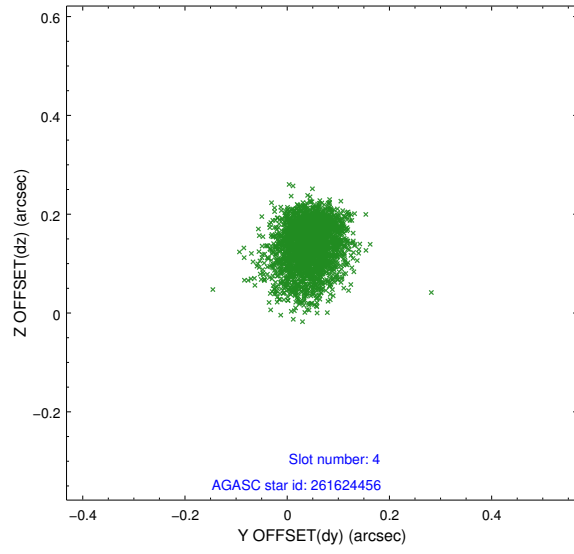
slot	status	id	mag	n_pts	med_dy	med_dz	dr1	dr2	ra	dec	mean_y	mean_z
0	FID	HRC-I-1	6.98	1323	0.005	-0.027	0.007	0.013	0.000000	0.000000	-756.90	-1288.37
1	FID	HRC-I-3	7.07	1323	0.045	-0.062	0.008	0.015	0.000000	0.000000	-1185.93	1015.18
2	FID	HRC-I-4	7.01	1323	0.064	-0.001	0.007	0.017	0.000000	0.000000	1285.04	1014.60
3	GUIDE	261621400	6.96	2646	-0.045	-0.117	0.055	0.090	198.901600	28.741982	-938.82	605.39
4	GUIDE	261624456	7.30	2646	0.043	0.143	0.060	0.103	199.758056	28.567828	-1449.94	-2124.09
5	GUIDE	261629720	8.09	2645	0.010	0.077	0.054	0.087	199.236176	29.044452	191.41	-404.79
6	GUIDE	261619776	8.80	2645	-0.079	-0.037	0.068	0.111	198.654383	29.401174	1403.02	1472.91
7	GUIDE	261626376	9.71	2642	0.072	-0.058	0.097	0.165	198.947288	29.347445	1245.44	548.00

2.4 Star Slots

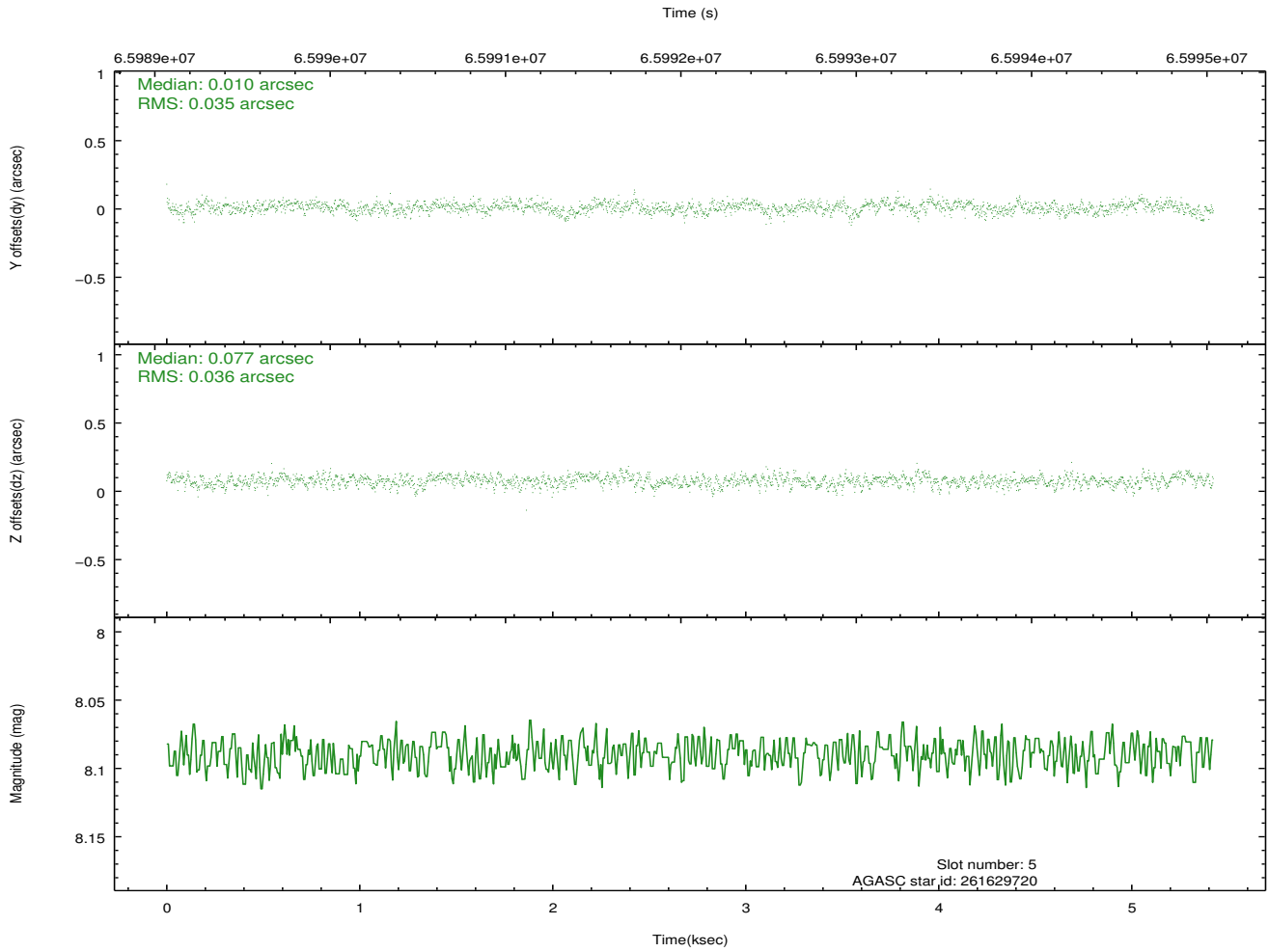
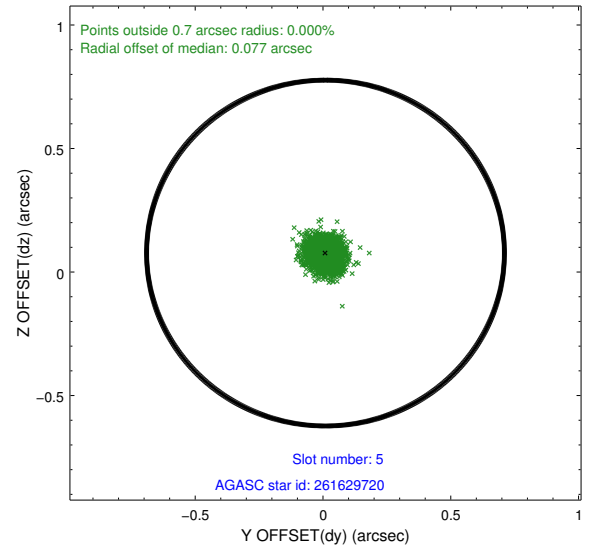
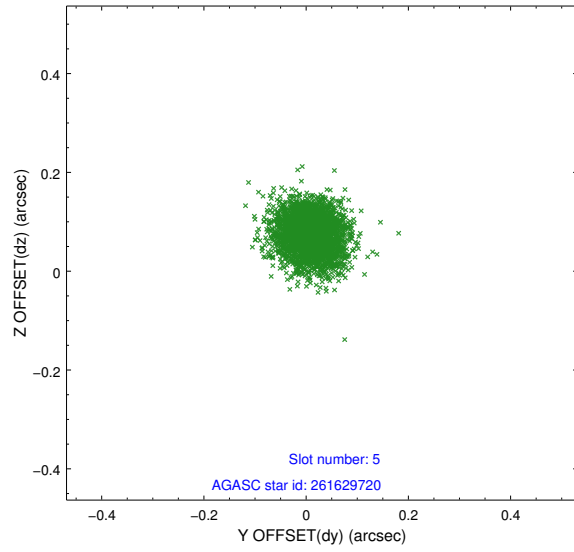
2.4.1 Slot 3



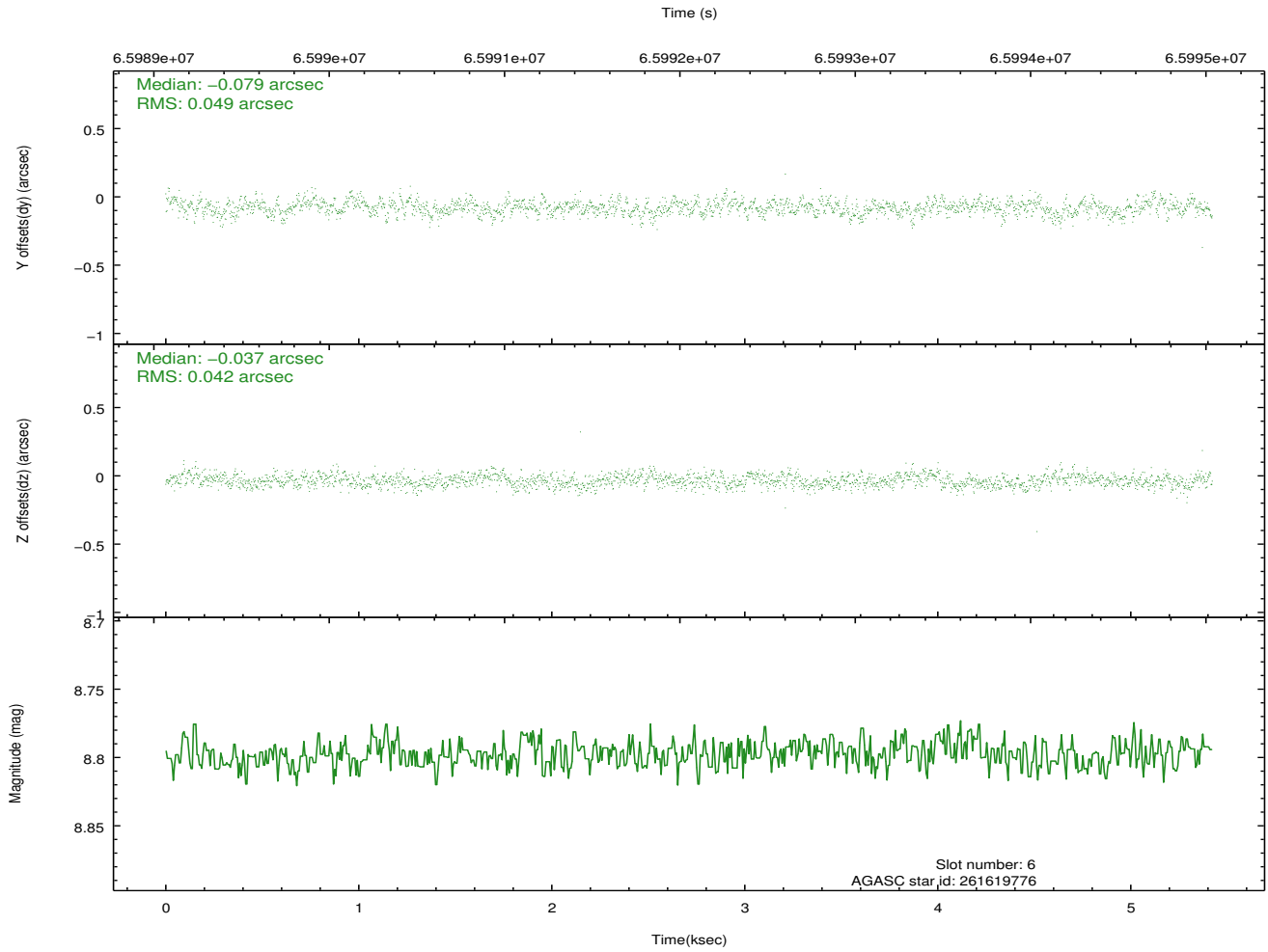
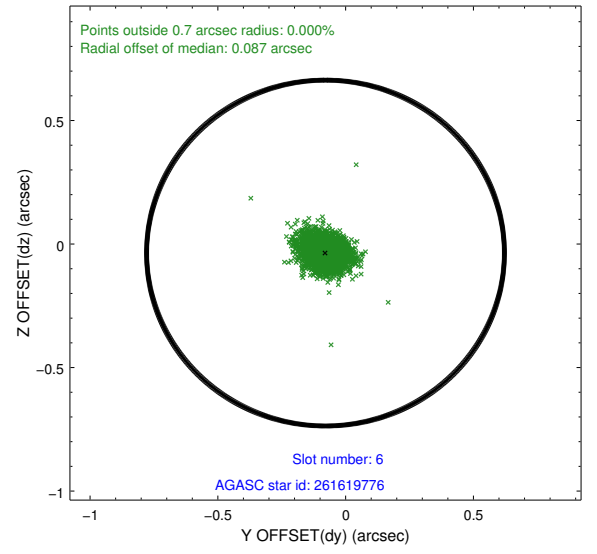
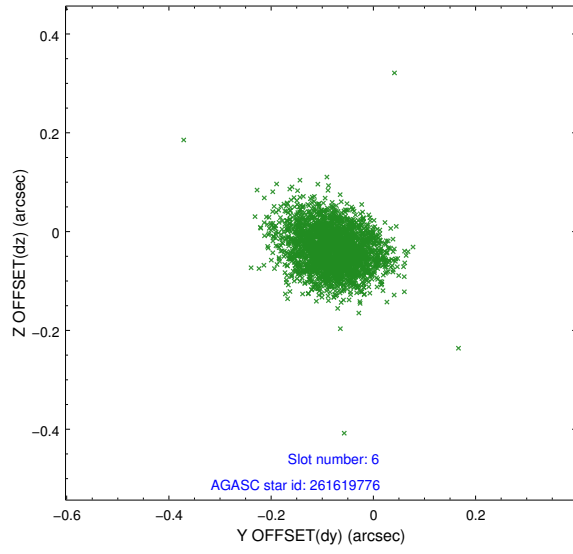
2.4.2 Slot 4



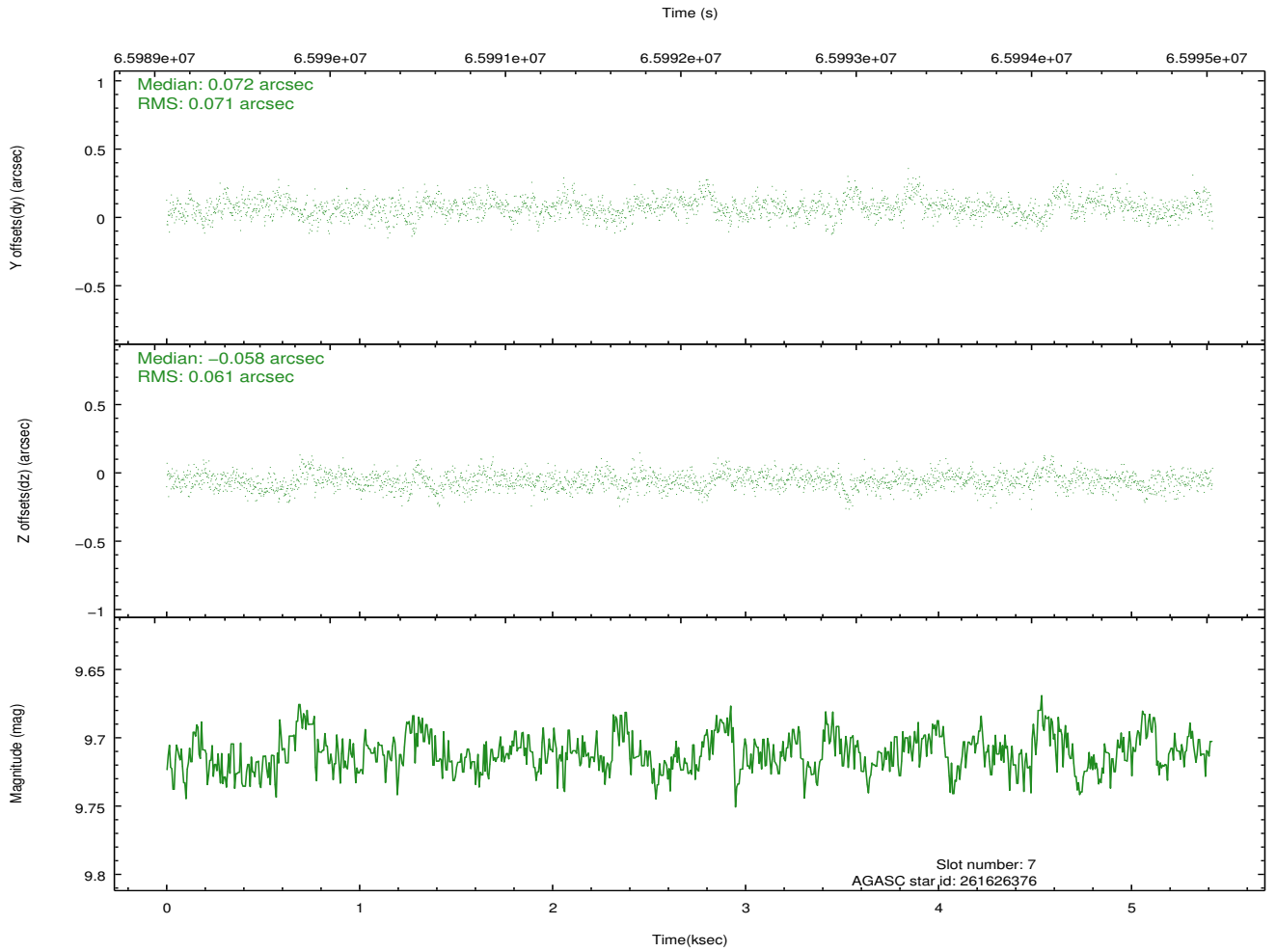
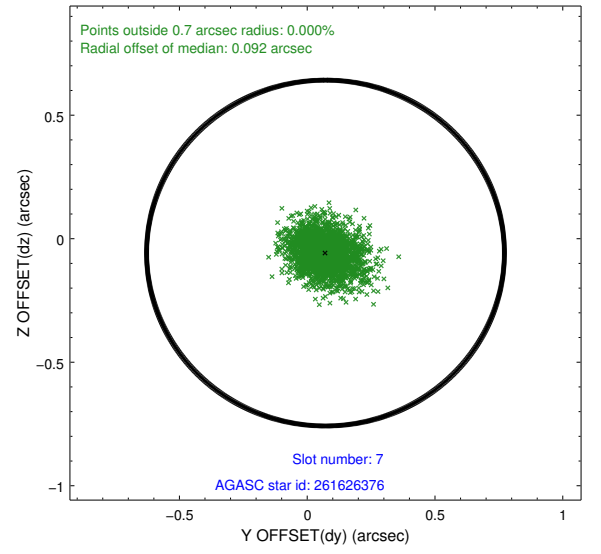
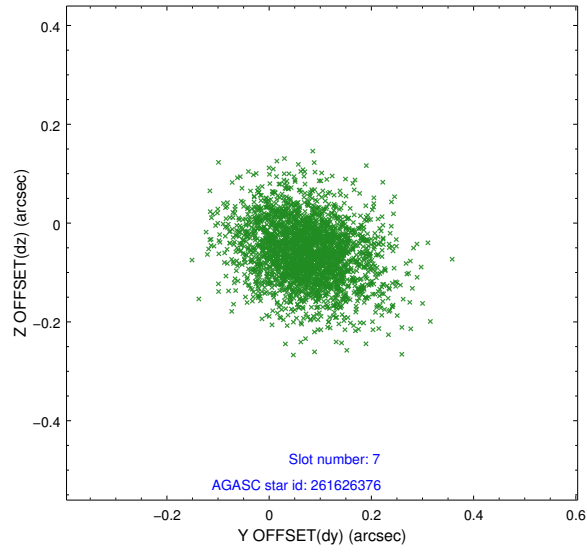
2.4.3 Slot 5



2.4.4 Slot 6

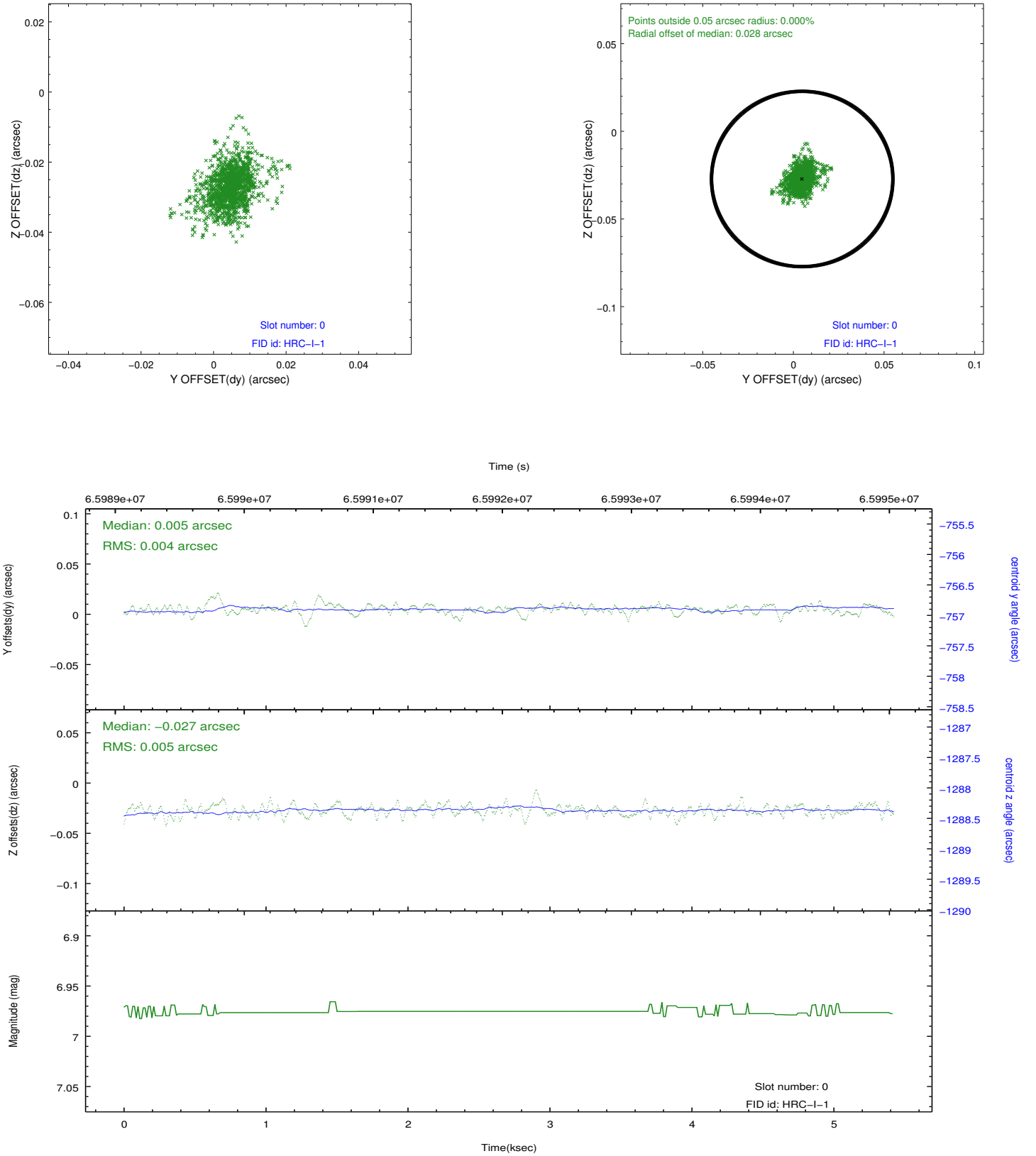


2.4.5 Slot 7

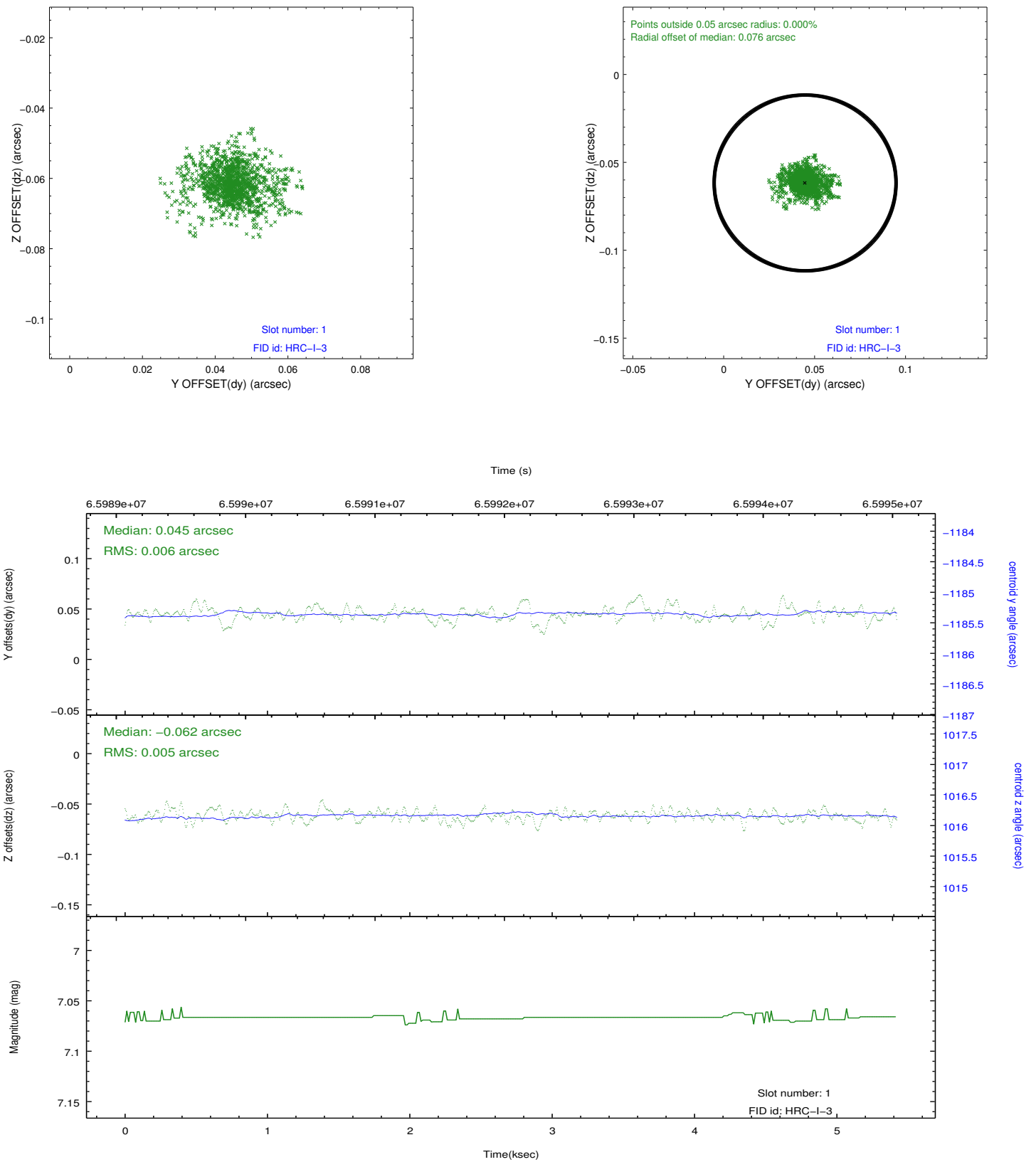


2.5 FID Slots

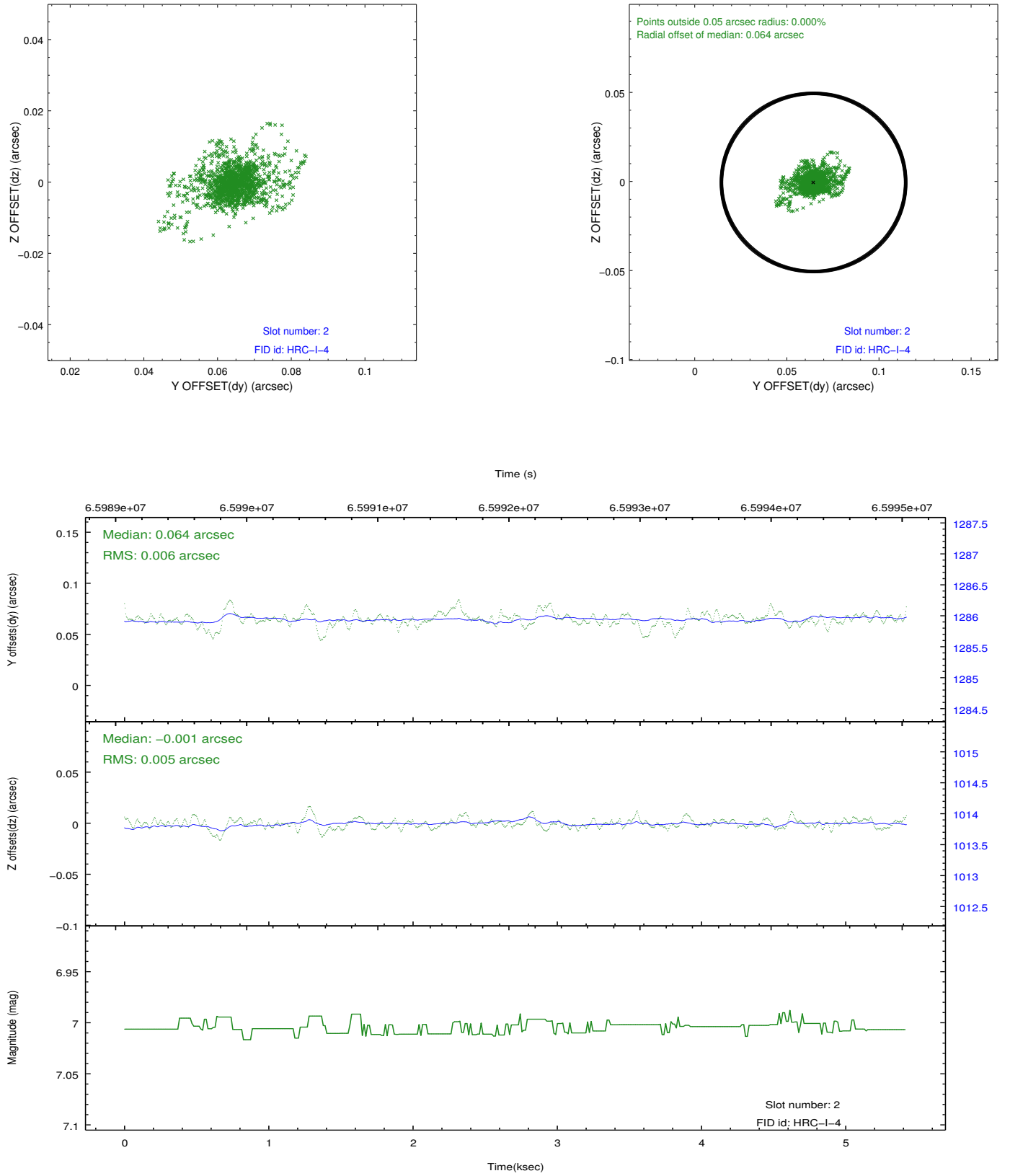
2.5.1 Slot 0



2.5.2 Slot 1

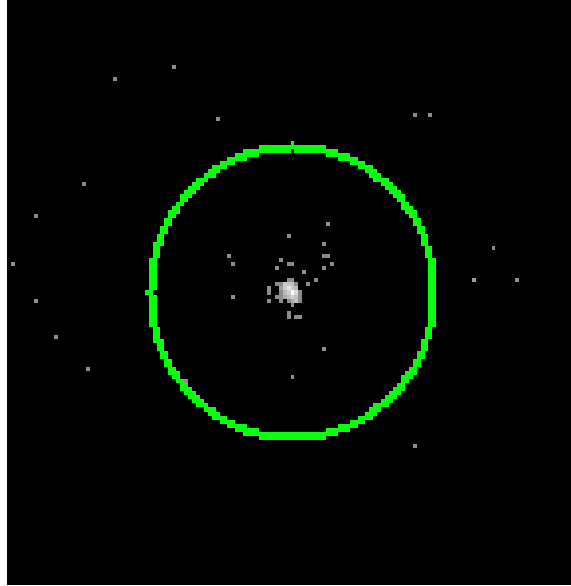


2.5.3 Slot 2

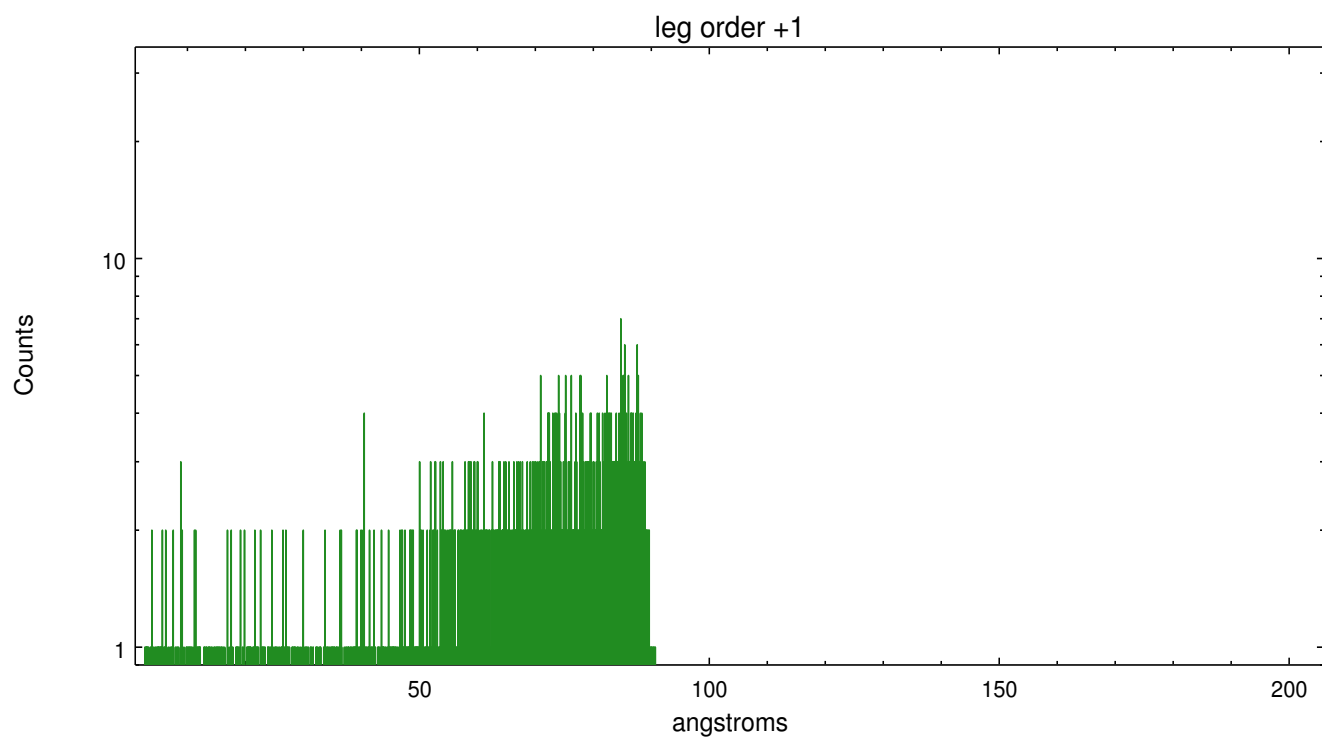
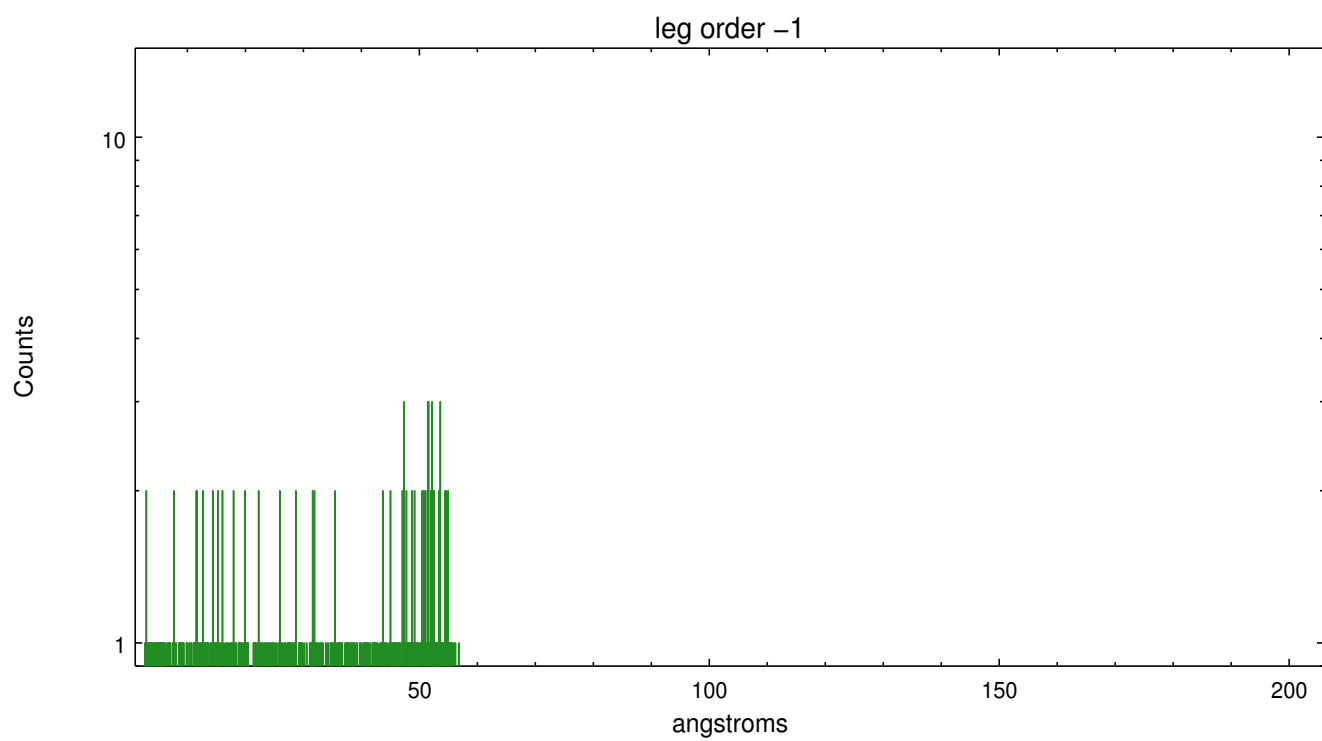


3 Gratings

3.1 LETG Arm



LETG Zero Order



A Summary

A.1 Status

V&V Scientist	Joy Nichols
V&V Date (YYYY-MM-DD)	2012.08.23
V&V Edition	1
V&V Disposition and Status	OK
V&V Charge Time	5.419

A.2 Comments

Target placed 5 arcmin from center of detector via SIM motion. Target is thus off-axis. Order=-1 is truncated at about 58 A, but the order=+1 extends to about 90A.