

V&V Reference Report

L2 ASCDS Version : 8.1.1

Observation 1474 - L2 Version 4

Chandra X-Ray Center

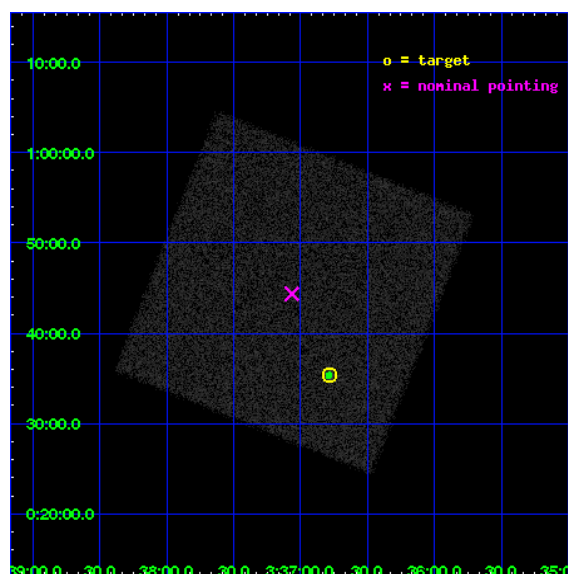
L2 Processing Date : Nov 24 2009

Contents

1	Front	2
2	OBI	3
2.1	OBI	3
2.1.1	Images	3
2.1.2	Parameters	4
2.1.3	Events	4
2.2	Compared Parameters	5
2.3	Aspect	6
2.4	Star Slots	9
2.4.1	Slot 3	9
2.4.2	Slot 4	10
2.4.3	Slot 5	11
2.4.4	Slot 6	12
2.4.5	Slot 7	13
2.5	FID Slots	14
2.5.1	Slot 0	14
2.5.2	Slot 1	15
2.5.3	Slot 2	16
3	Point Sources	17
A	Summary	18
A.1	Status	18
A.2	Comments	18

1 Front

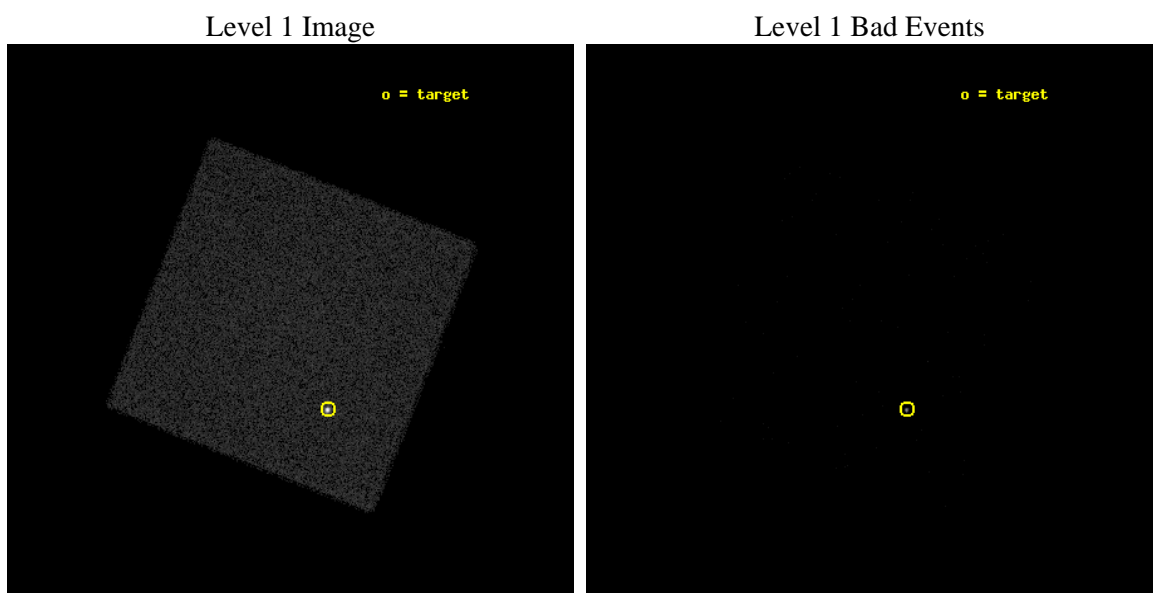
seq_num	290050	Sequence number
obs_id	1474	Observation id
title	 	Proposal title
observer	Dr. CXC Calibration	Principal investigator
object	HR1099	Source name
ra_targ	54.197083	Observer's specified target RA
dec_targ	0.589972	Observer's specified target Dec
ra_nom	54.266389802789	Nominal RA
dec_nom	0.73936232260474	Nominal Dec
roll_nom	336.70253229223	Nominal Roll
revision	4	Processing version of data
ontime	2271.4000820816	[s]
livetime	2256.6680995677	Ontime multiplied by DTCOR
l2events	79776	Number of level 2 events



2 OBI

2.1 OBI

2.1.1 Images



2.1.2 Parameters

obi_num	0	Obi number	sched_exp_time	2000.000000	Scheduled observation exposure time
ascdsver	8.1.1	Processing system revision	ontime	2271.4000820816	[s]
caldbver	4.1.4	 	l1events	117330	Number of level 1 events
date	2009-11-24T15:15:58	Date and time of file creation			
revision	4	Processing version of data			

2.1.3 Events

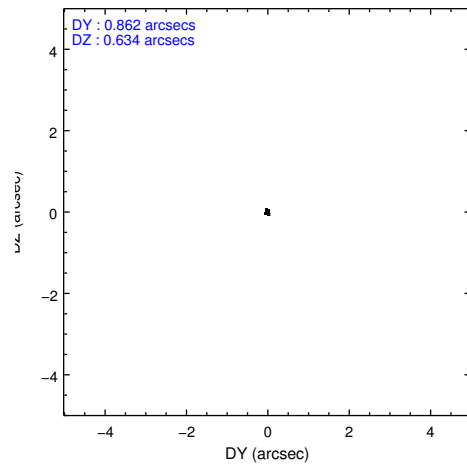
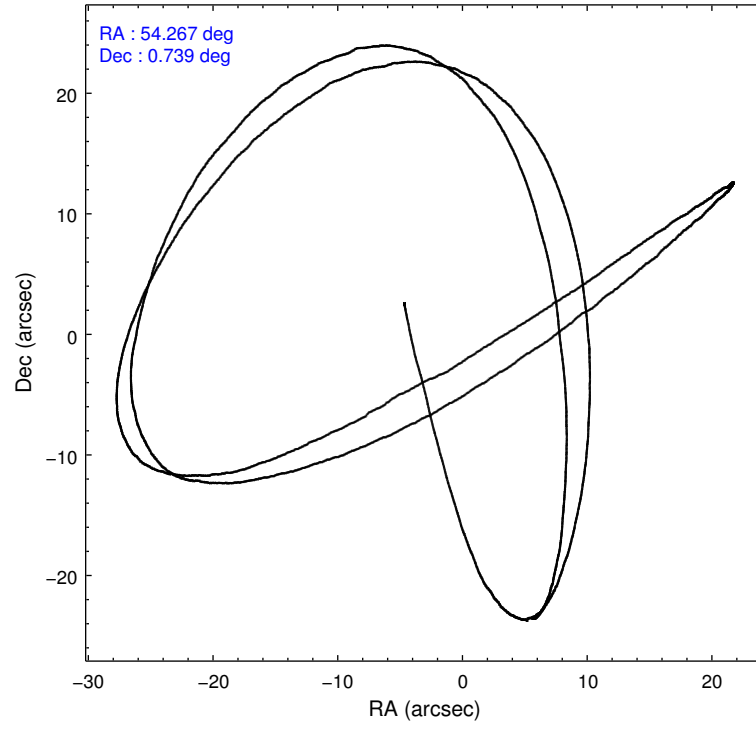
Level 1 Events

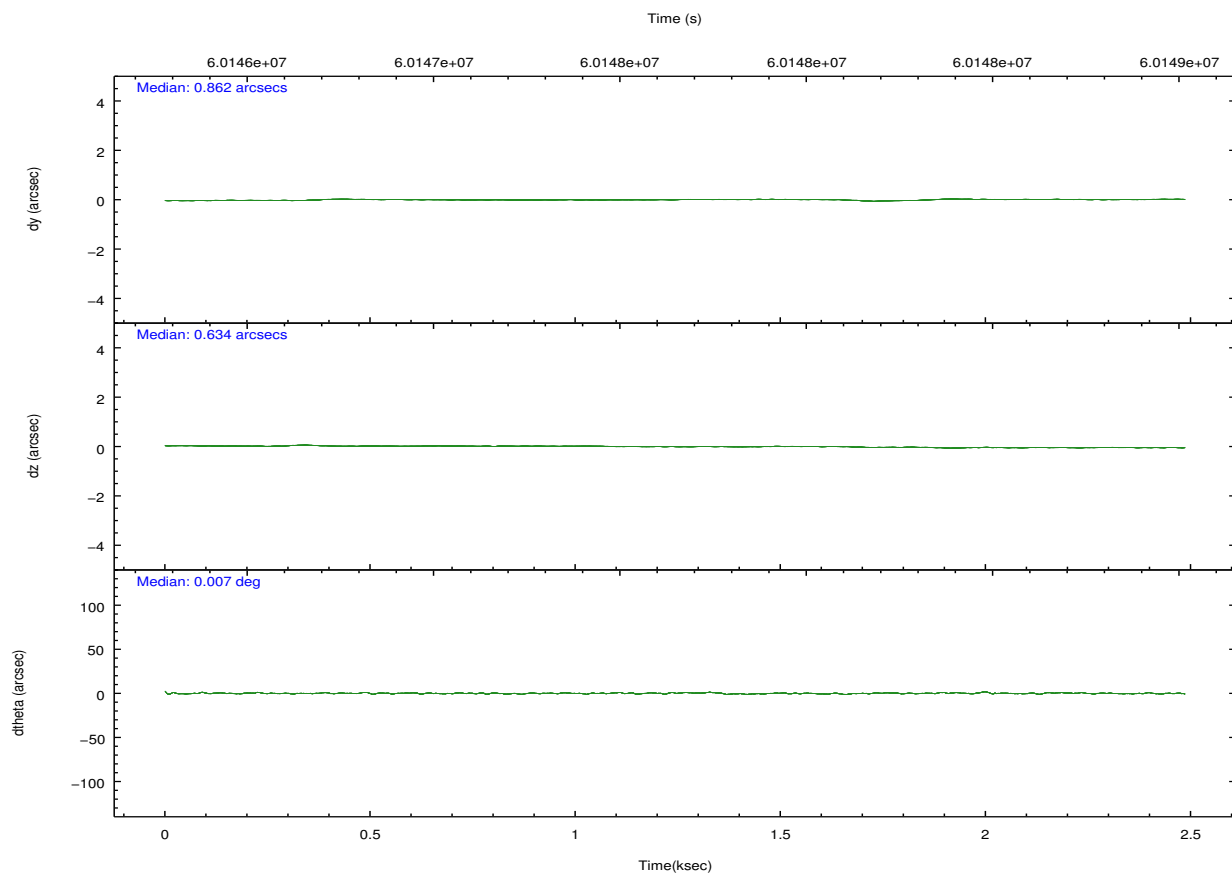
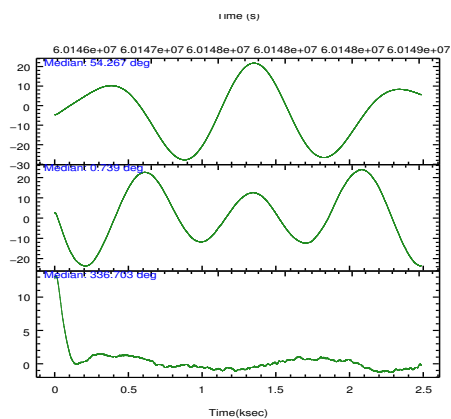
	segment 0
level 1 events	117330
rejected events	2737
rejected %	2%

2.2 Compared Parameters

Parameter	Planned	Actual	Parameter	Planned	Actual
Instrument	HRC	HRC	Obspar format version number	6	6
Detector	HRC-I	HRC-I	Obspar file type	PREDICTED	ACTUAL
Grating	NONE	NONE	Obspar update status	NONE	UPDATED
Data mode	OBSERVING	OBSERVING			
Observation mode	POINTING	POINTING			
Pointing RA	54.238803	54.26638980278894			
Pointing Dec	0.736378	0.7393623226047383			
Pointing Roll	336.798353	336.7025322922281			
SIM focus pos (mm)	-1.040293	-1.038866356238299			
SIM defocus (mm)	0	0.001426264420575141			
SIM translation stage pos (mm)	126.985494	126.9854943052878			
SIM translation stage offset (mm)	0	-5.413686238853188e-06			
Observation start time	60146891.184000	60146224.991965			
Observation start date	1999-11-28T03:27:07	1999-11-28T03:17:04			
Observation end time	60148891.184000	60150091.804605			
Observation end date	1999-11-28T04:00:27	1999-11-28T04:21:31			

2.3 Aspect



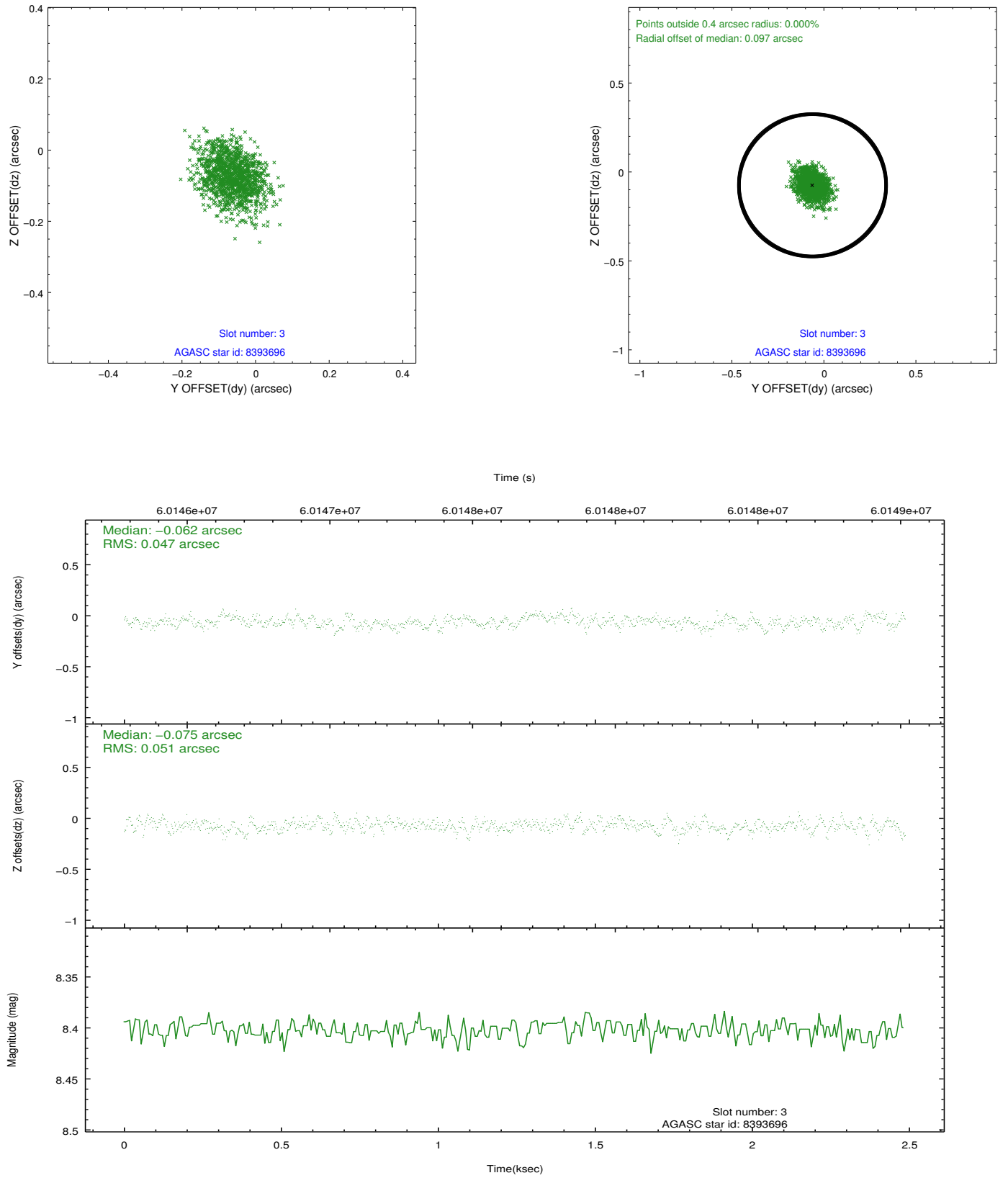


Slot Statistics

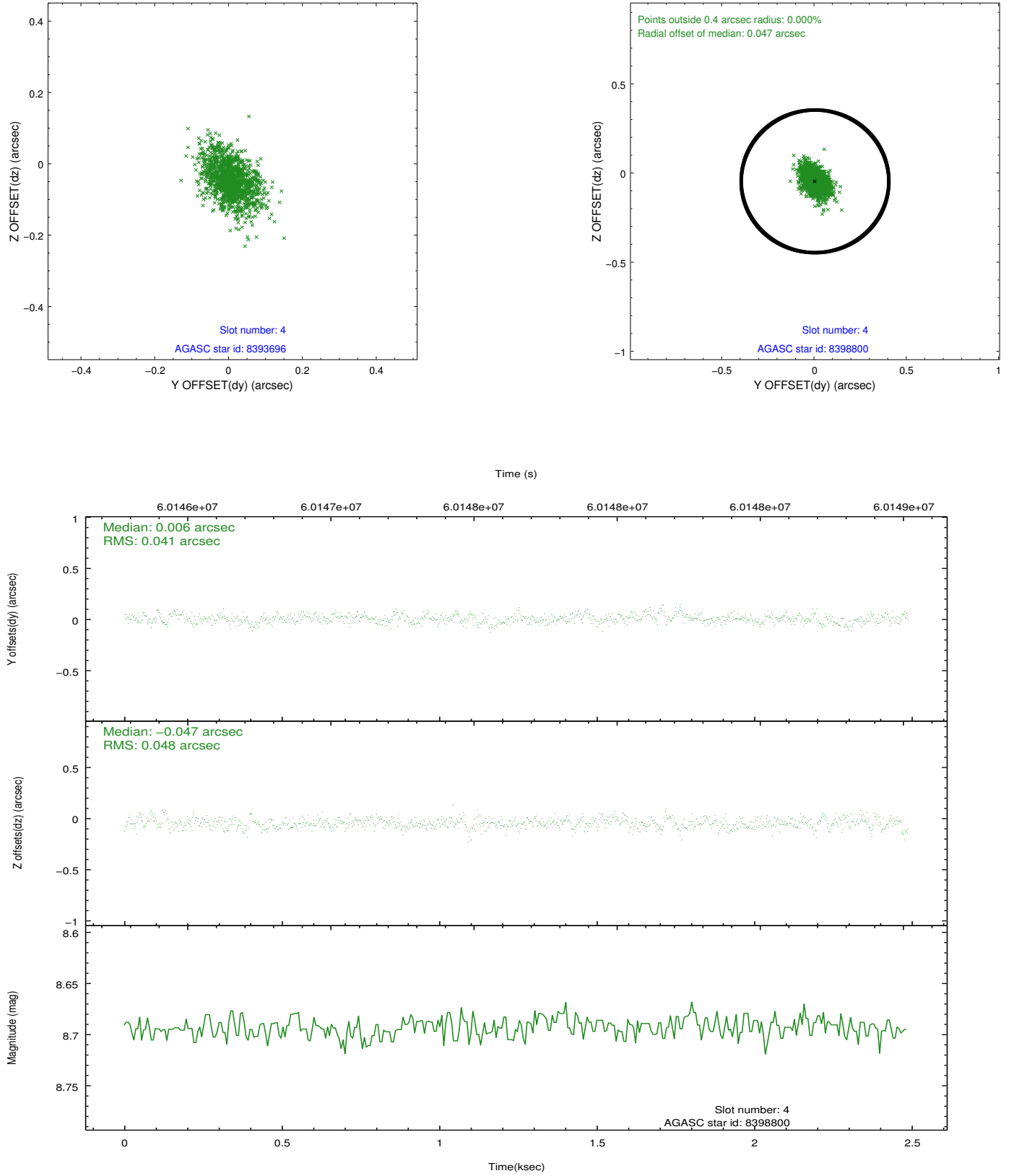
slot	status	id	mag	n_pts	med_dy	med_dz	dr1	dr2	ra	dec	mean_y	mean_z
0	FID	HRC-I-1	6.97	1214	-0.000	-0.027	0.006	0.010	0.000000	0.000000	-756.24	-1288.39
1	FID	HRC-I-3	7.05	1214	0.050	-0.067	0.007	0.011	0.000000	0.000000	-1185.36	1015.06
2	FID	HRC-I-4	6.99	1214	0.065	0.004	0.005	0.009	0.000000	0.000000	1285.58	1014.70
3	GUIDE	8393696	8.40	1214	-0.062	-0.075	0.074	0.119	53.645666	0.680479	-1885.91	-1025.20
4	GUIDE	8398800	8.69	1214	0.006	-0.047	0.066	0.111	54.242352	0.922024	-255.68	619.32
5	GUIDE	8390744	9.02	1213	-0.023	0.040	0.067	0.122	53.677290	0.926294	-2129.94	-166.28
6	GUIDE	8395104	8.66	1213	0.023	0.038	0.070	0.120	54.744893	0.796520	1584.78	917.60
7	GUIDE	8395504	9.75	1213	0.051	0.048	0.108	0.172	54.466573	0.973564	415.95	1109.51

2.4 Star Slots

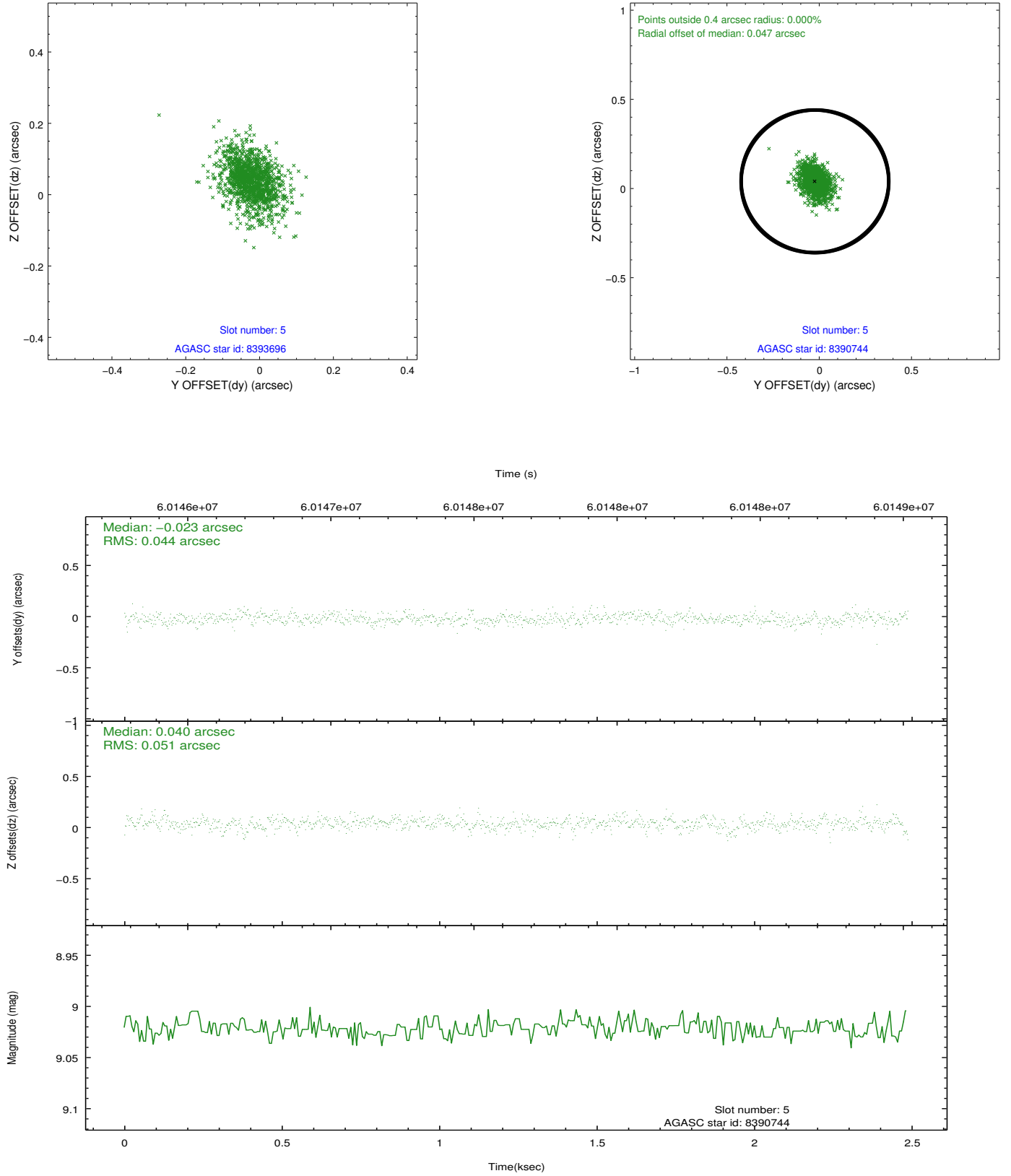
2.4.1 Slot 3



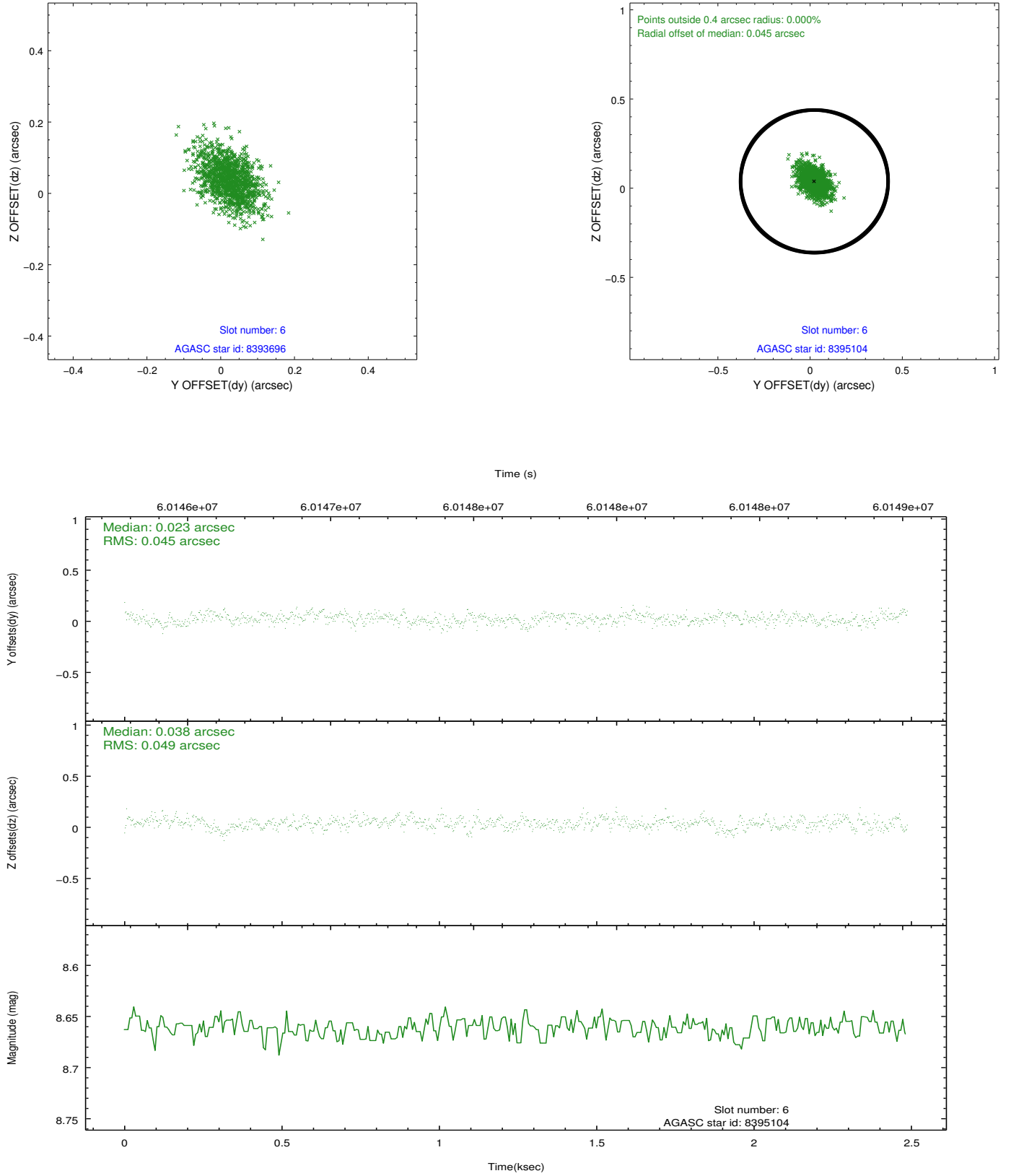
2.4.2 Slot 4



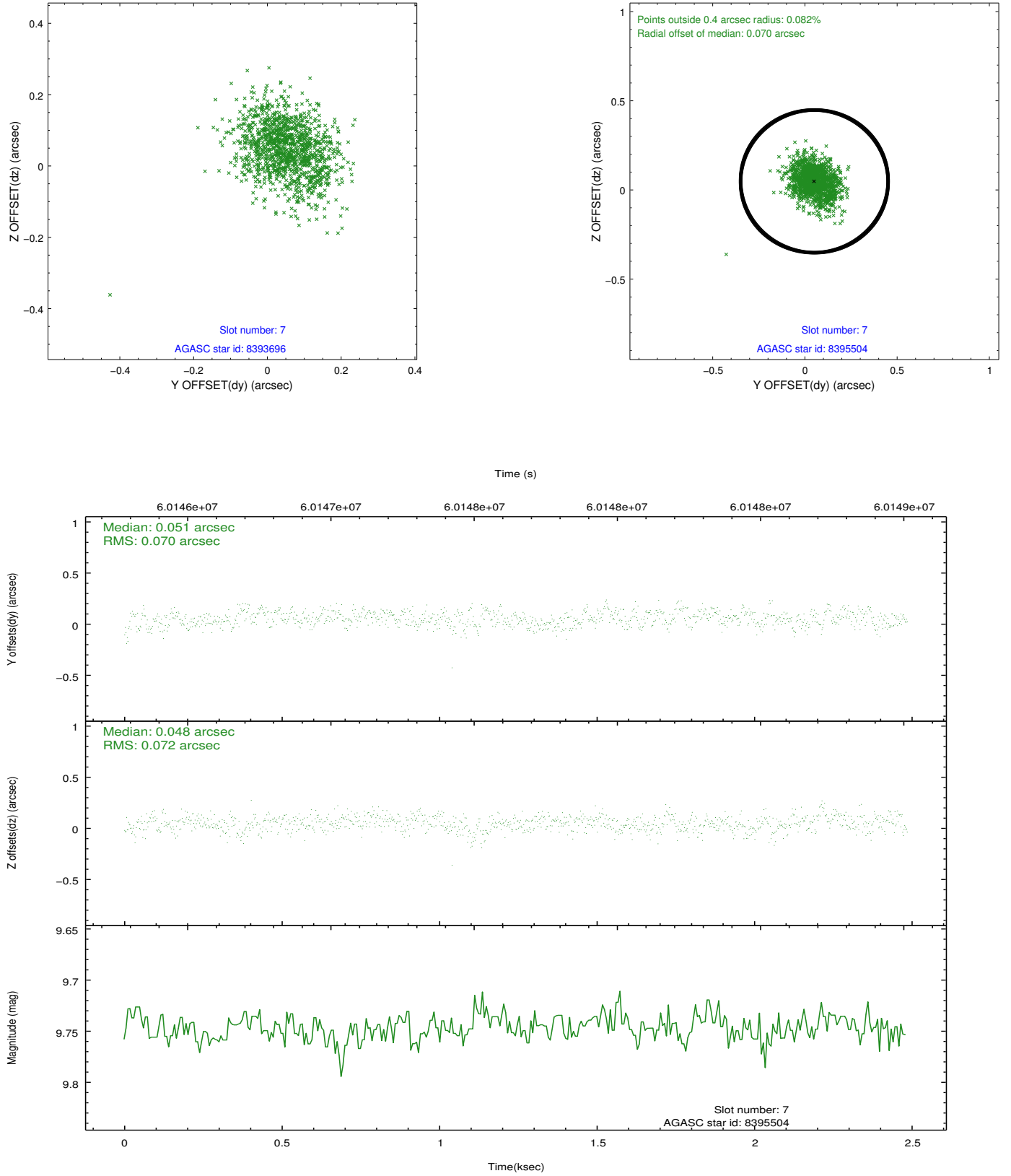
2.4.3 Slot 5



2.4.4 Slot 6

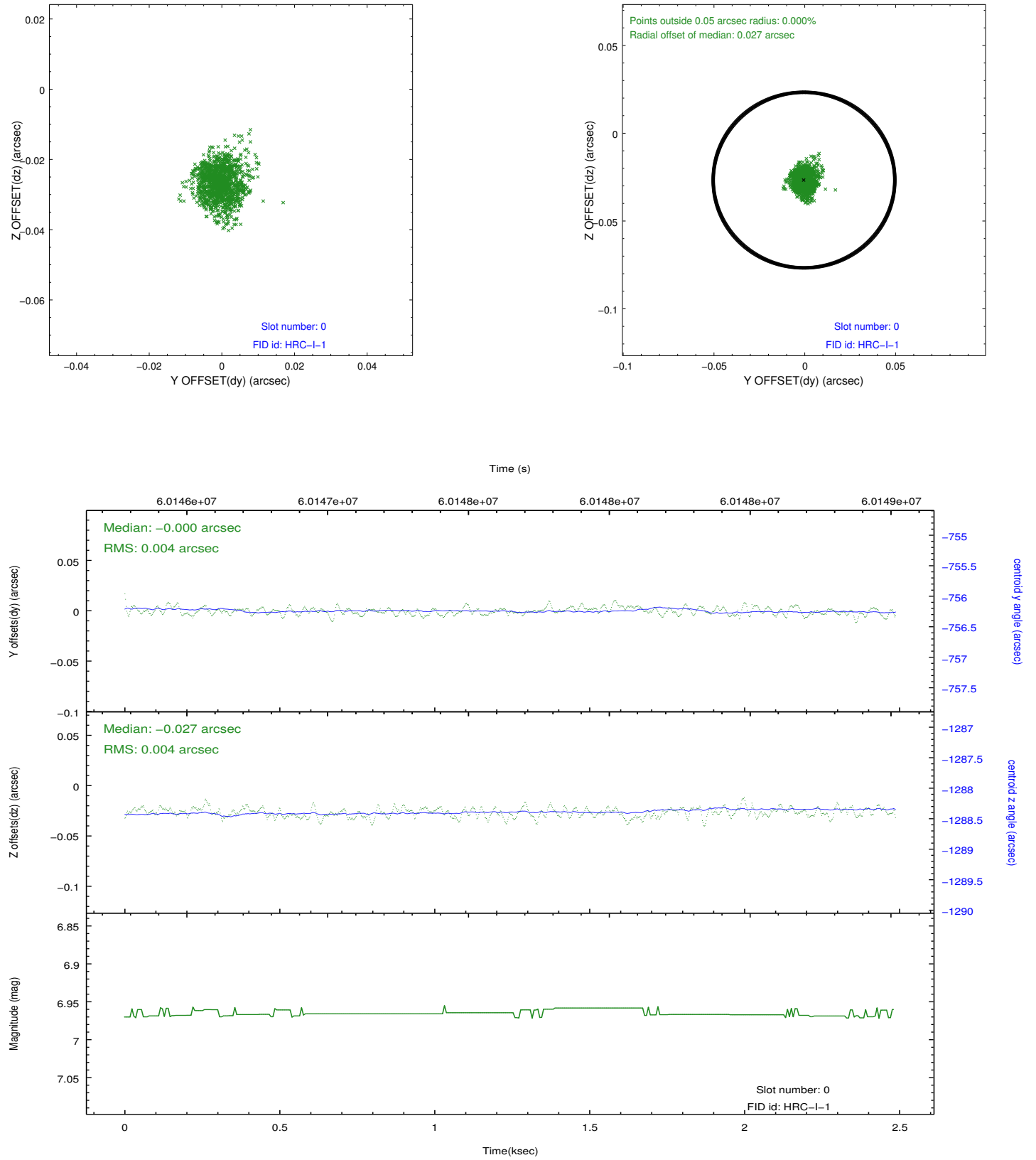


2.4.5 Slot 7

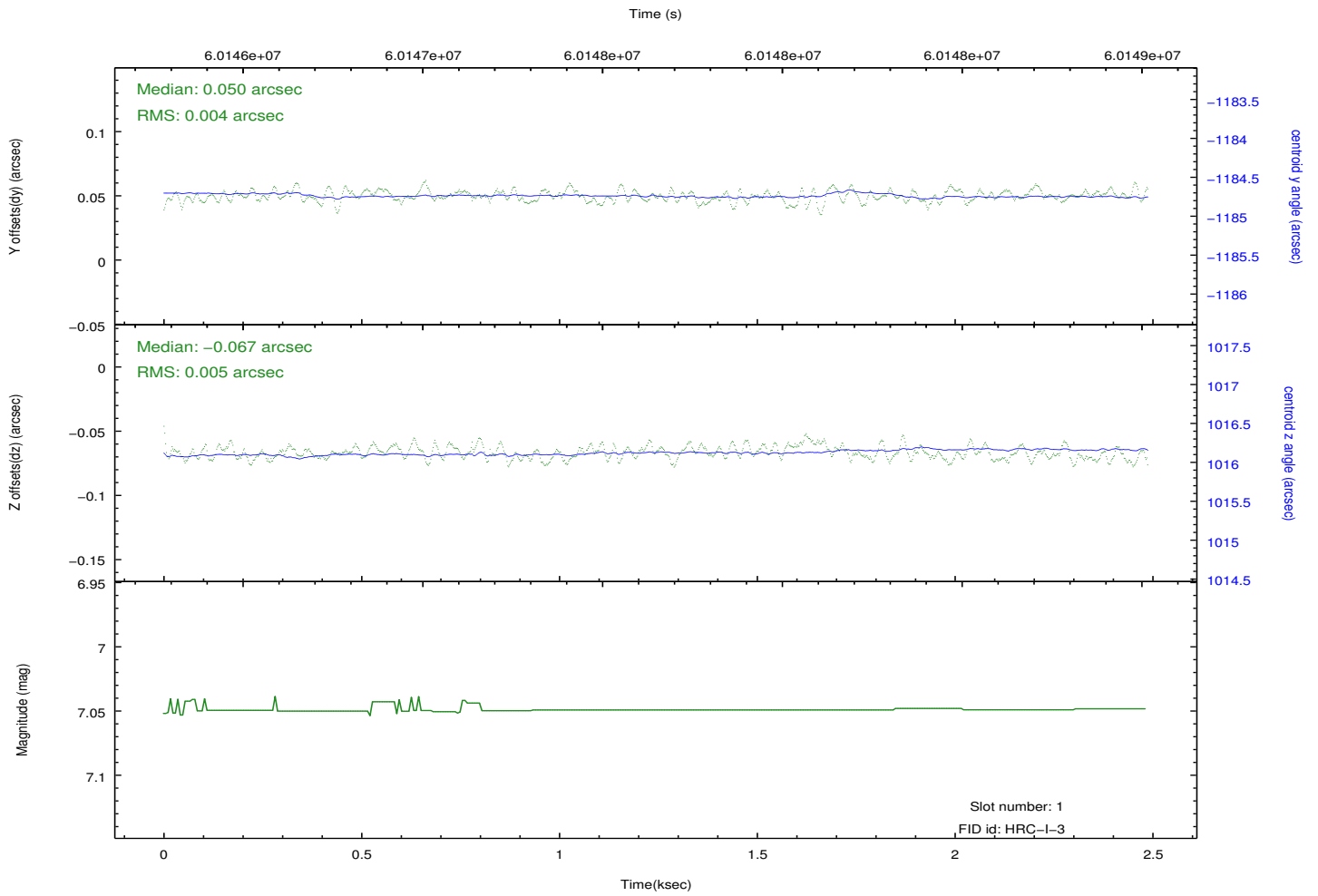
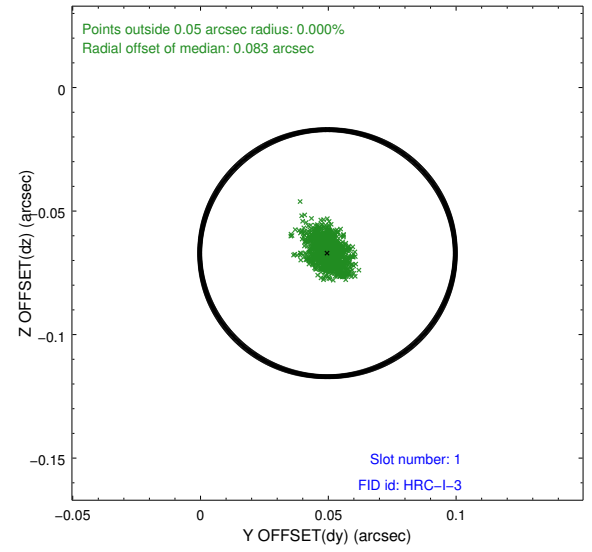
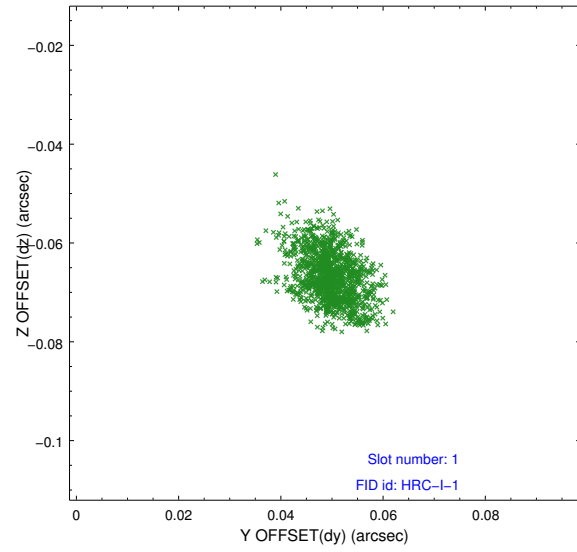


2.5 FID Slots

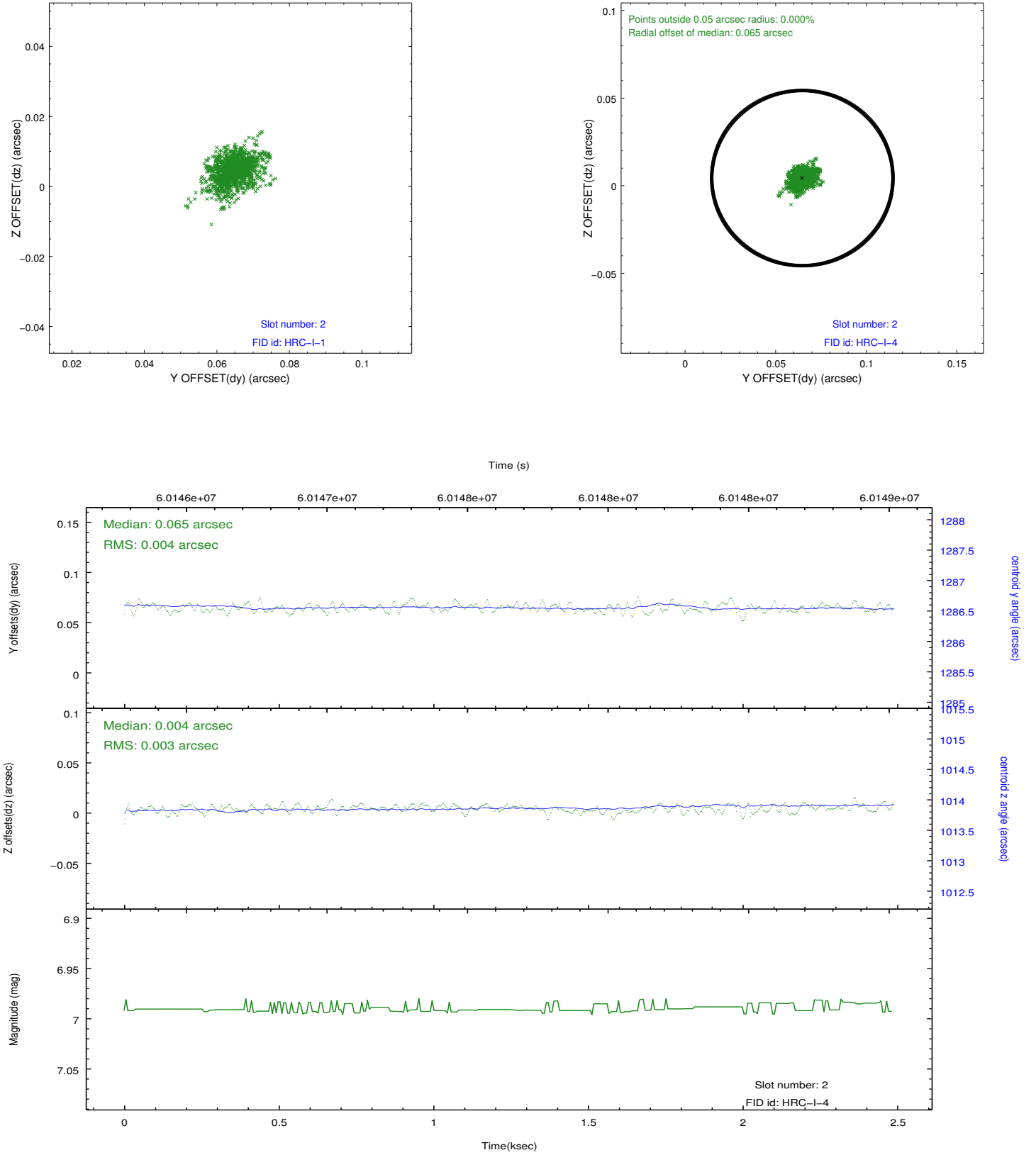
2.5.1 Slot 0



2.5.2 Slot 1

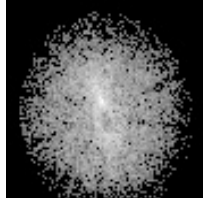


2.5.3 Slot 2



3 Point Sources

10.00 arcmin



A Summary

A.1 Status

V&V Scientist	Joy Nichols
V&V Date (YYYY-MM-DD)	2009.12.02
V&V Edition	1
V&V Disposition and Status	OK
V&V Charge Time	2.269

A.2 Comments

Charge time for this ObsId remains at original value of 2.269 ksec, although with the current processing the charge time would have been 2.271 ksec.

=====

HRC-I PSF calibration. Target is off-axis.