

V&V Reference Report

L2 ASCDS Version : 8.1.1

Observation 1468 - L2 Version 4

Chandra X-Ray Center

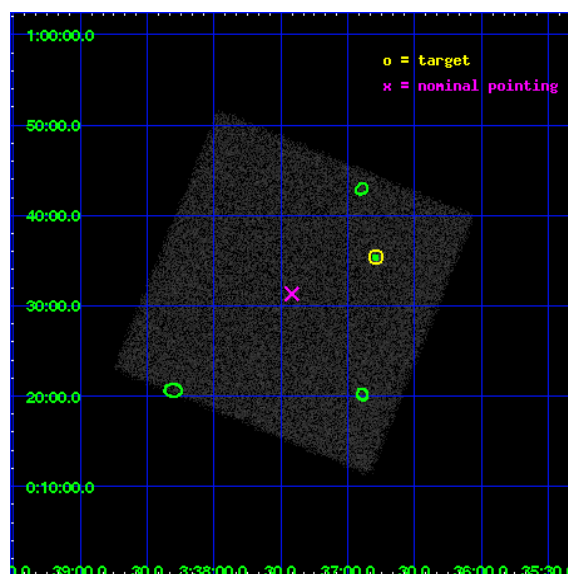
L2 Processing Date : Nov 24 2009

Contents

| | | |
|----------|-------------------------------|-----------|
| 1 | Front | 2 |
| 2 | OBI | 3 |
| 2.1 | OBI | 3 |
| 2.1.1 | Images | 3 |
| 2.1.2 | Parameters | 4 |
| 2.1.3 | Events | 4 |
| 2.2 | Compared Parameters | 5 |
| 2.3 | Aspect | 6 |
| 2.4 | Star Slots | 9 |
| 2.4.1 | Slot 3 | 9 |
| 2.4.2 | Slot 4 | 10 |
| 2.4.3 | Slot 5 | 11 |
| 2.4.4 | Slot 6 | 12 |
| 2.5 | FID Slots | 13 |
| 2.5.1 | Slot 0 | 13 |
| 2.5.2 | Slot 1 | 14 |
| 2.5.3 | Slot 2 | 15 |
| 3 | Point Sources | 16 |
| A | Summary | 17 |
| A.1 | Status | 17 |
| A.2 | Comments | 17 |

1 Front

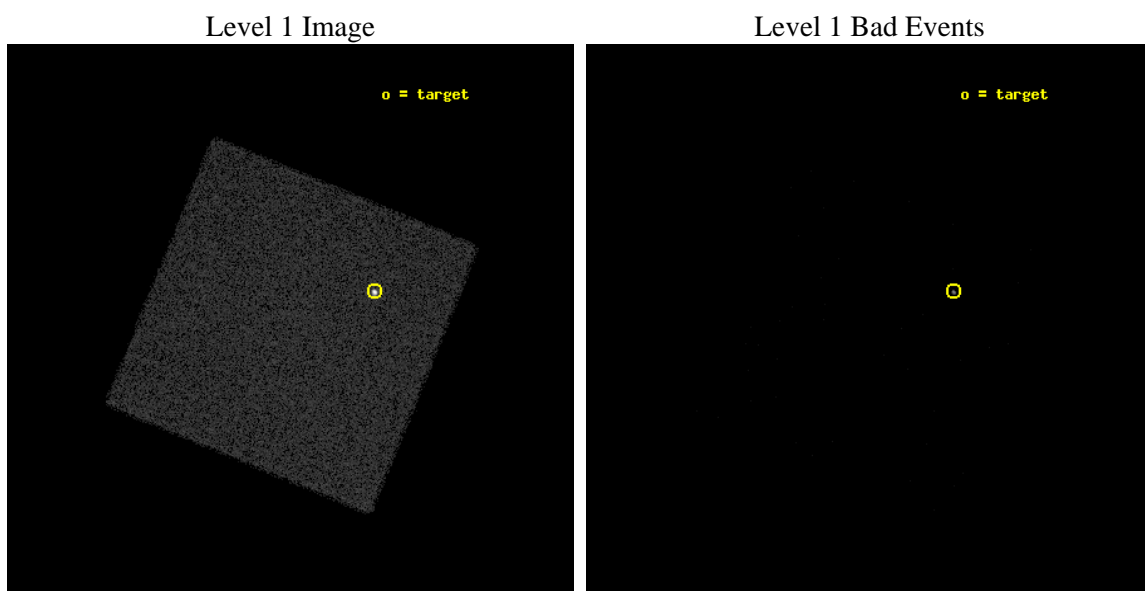
| | | |
|----------|---------------------|---------------------------------|
| seq_num | 290044 | Sequence number |
| obs_id | 1468 | Observation id |
| title | | Proposal title |
| observer | Dr. CXC Calibration | Principal investigator |
| object | HR1099 | Source name |
| ra_targ | 54.197083 | Observer's specified target RA |
| dec_targ | 0.589972 | Observer's specified target Dec |
| ra_nom | 54.354555978827 | Nominal RA |
| dec_nom | 0.52196586555934 | Nominal Dec |
| roll_nom | 337.23489189429 | Nominal Roll |
| revision | 4 | Processing version of data |
| ontime | 2275.7563322484 | [s] |
| livetime | 2260.8507295862 | Ontime multiplied by DTCOR |
| l2events | 81675 | Number of level 2 events |



2 OBI

2.1 OBI

2.1.1 Images



2.1.2 Parameters

| | | | | | |
|----------|---------------------|--------------------------------|----------------|-----------------|-------------------------------------|
| obi_num | 0 | Obi number | sched_exp_time | 2000.000000 | Scheduled observation exposure time |
| ascdsver | 8.1.1 | Processing system revision | ontime | 2275.7563322484 | [s] |
| caldbver | 4.1.4 | | l1events | 119424 | Number of level 1 events |
| date | 2009-11-24T15:24:58 | Date and time of file creation | | | |
| revision | 4 | Processing version of data | | | |

2.1.3 Events

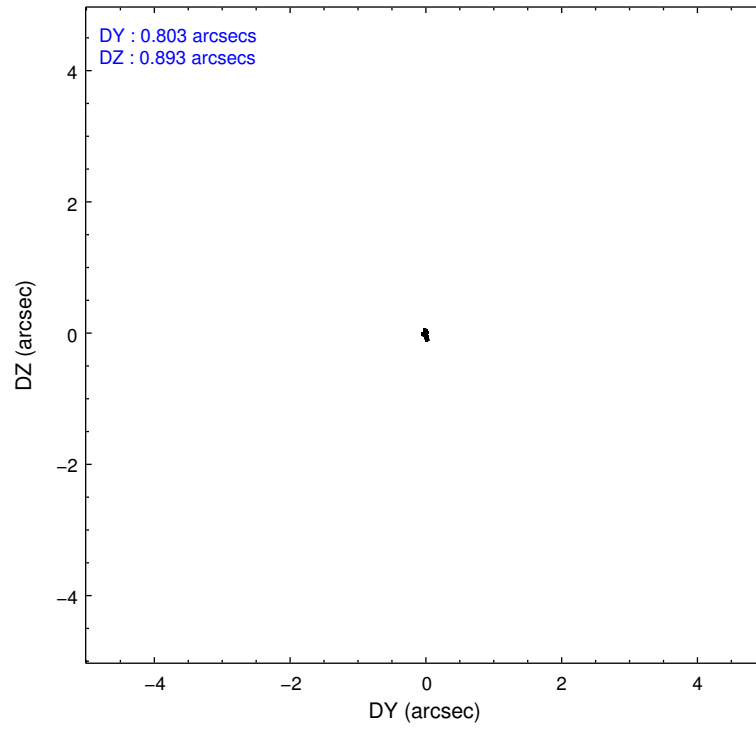
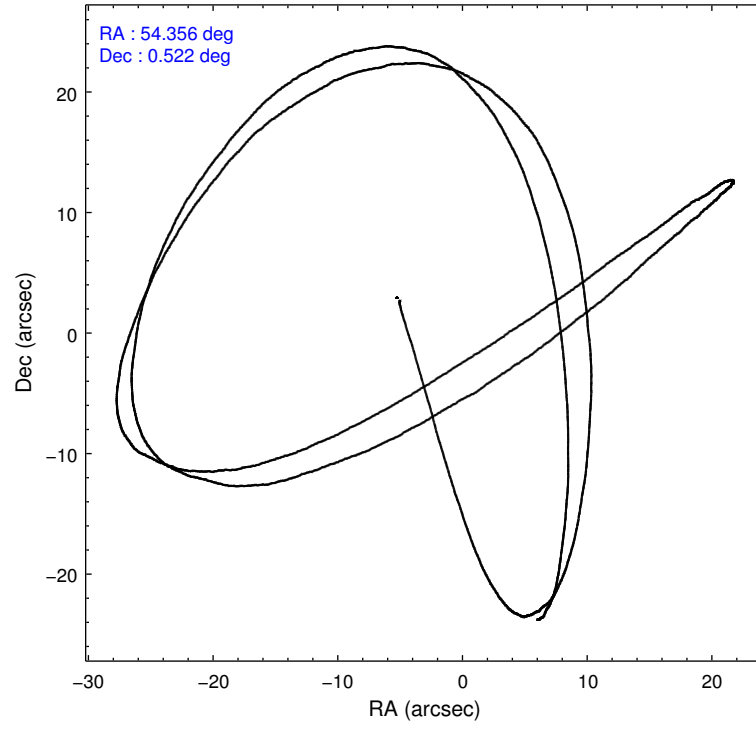
Level 1 Events

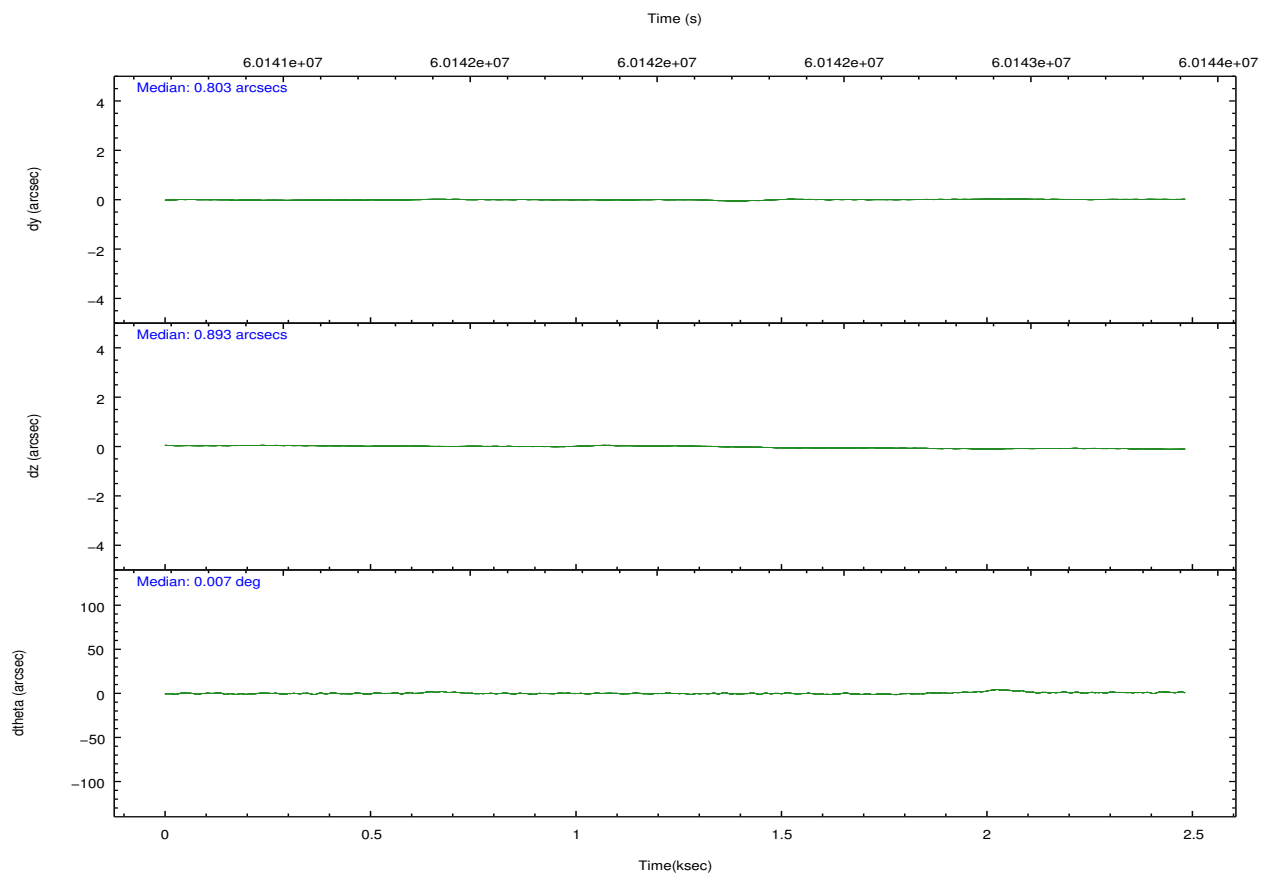
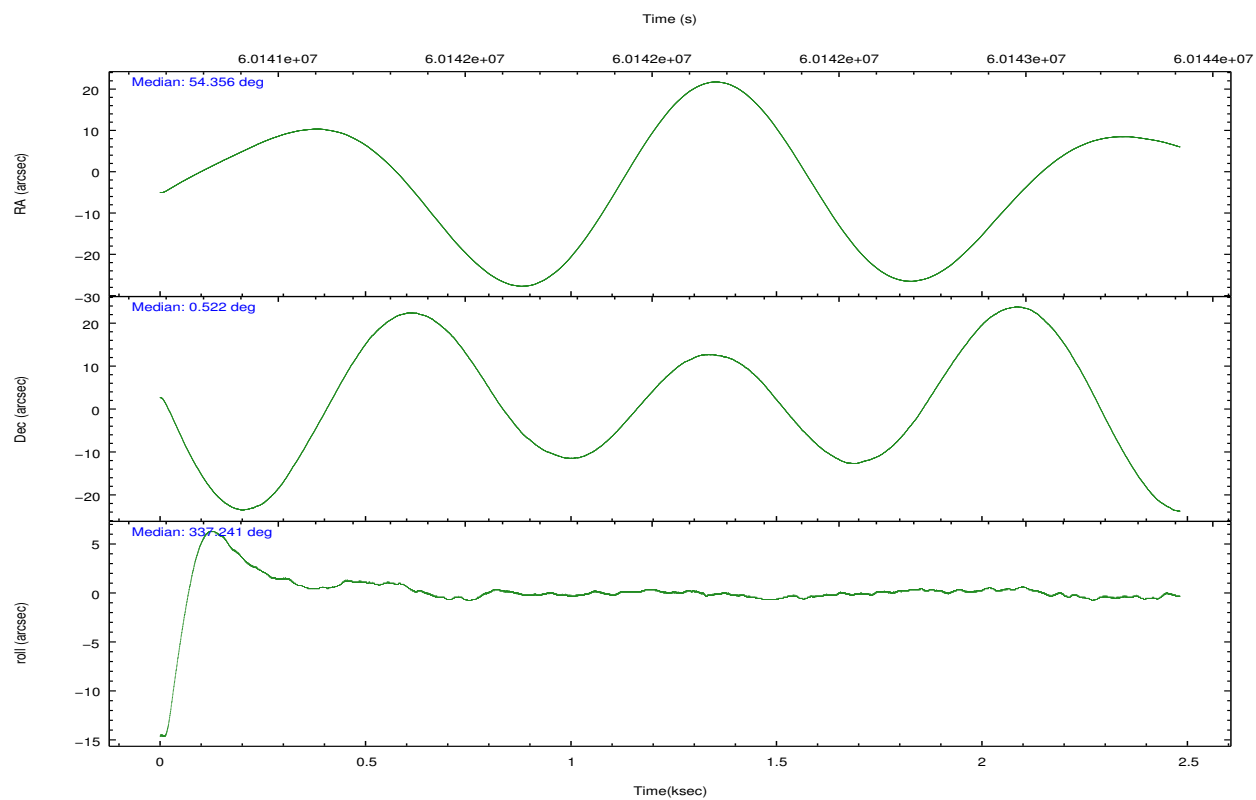
| | |
|-----------------|----------------------|
| | segment 0 |
| level 1 events | 119424 |
| rejected events | 2533 |
| rejected % | 2% |

2.2 Compared Parameters

| Parameter | Planned | Actual | Parameter | Planned | Actual |
|-----------------------------------|---------------------|------------------------|------------------------------|-----------|---------|
| Instrument | HRC | HRC | Obspar format version number | 6 | 6 |
| Detector | HRC-I | HRC-I | Obspar file type | PREDICTED | ACTUAL |
| Grating | NONE | NONE | Obspar update status | NONE | UPDATED |
| Data mode | OBSERVING | OBSERVING | | | |
| Observation mode | POINTING | POINTING | | | |
| Pointing RA | 54.327009 | 54.35455597882676 | | | |
| Pointing Dec | 0.518732 | 0.5219658655593384 | | | |
| Pointing Roll | 337.330624 | 337.2348918942937 | | | |
| SIM focus pos (mm) | -1.040293 | -1.038866356238299 | | | |
| SIM defocus (mm) | 0 | 0.001426264420575141 | | | |
| SIM translation stage pos (mm) | 126.985494 | 126.9854943052878 | | | |
| SIM translation stage offset (mm) | 0 | -5.413686238853188e-06 | | | |
| Observation start time | 60141291.184000 | 60140624.904263 | | | |
| Observation start date | 1999-11-28T01:53:47 | 1999-11-28T01:43:44 | | | |
| Observation end time | 60143291.184000 | 60143424.691864 | | | |
| Observation end date | 1999-11-28T02:27:07 | 1999-11-28T02:30:24 | | | |

2.3 Aspect



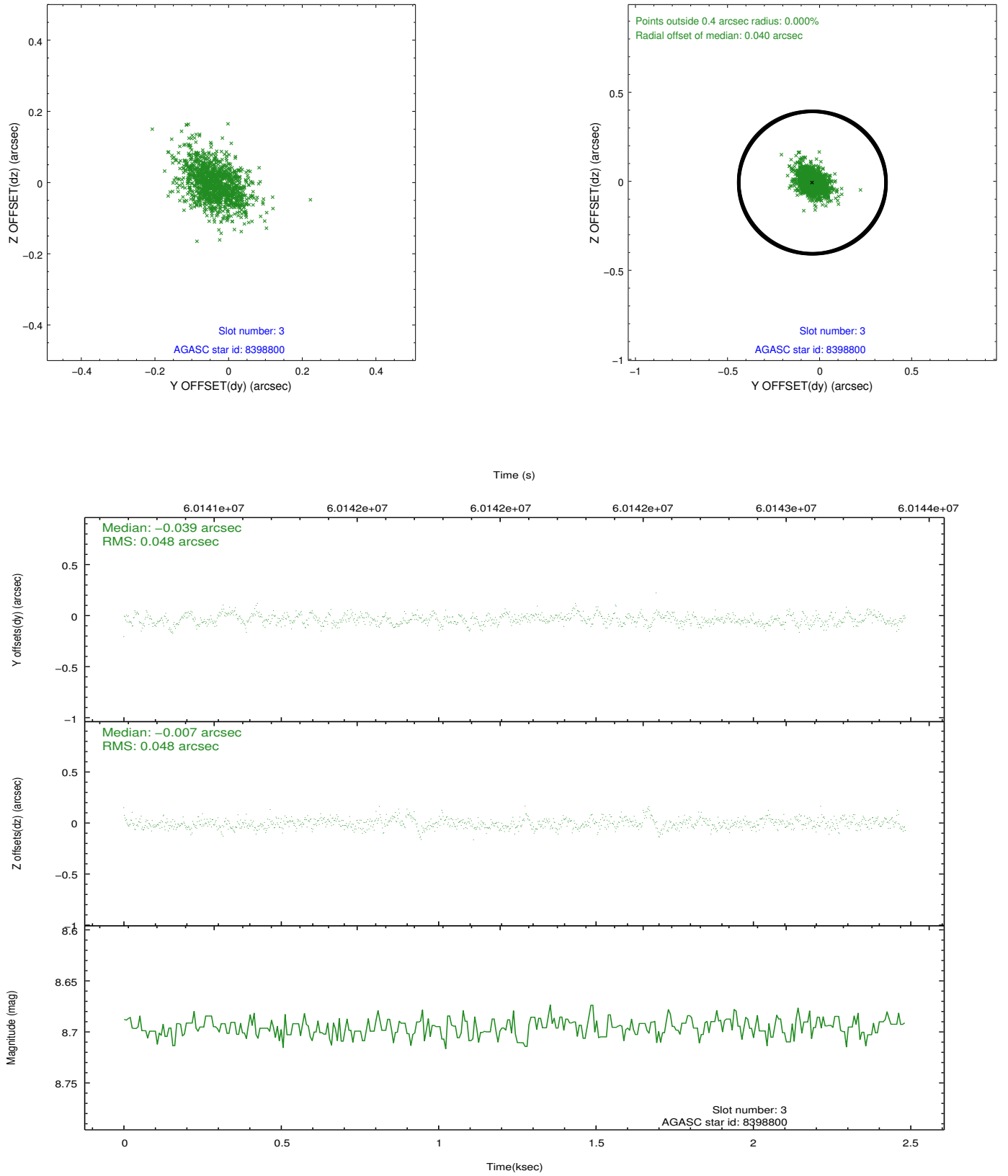


Slot Statistics

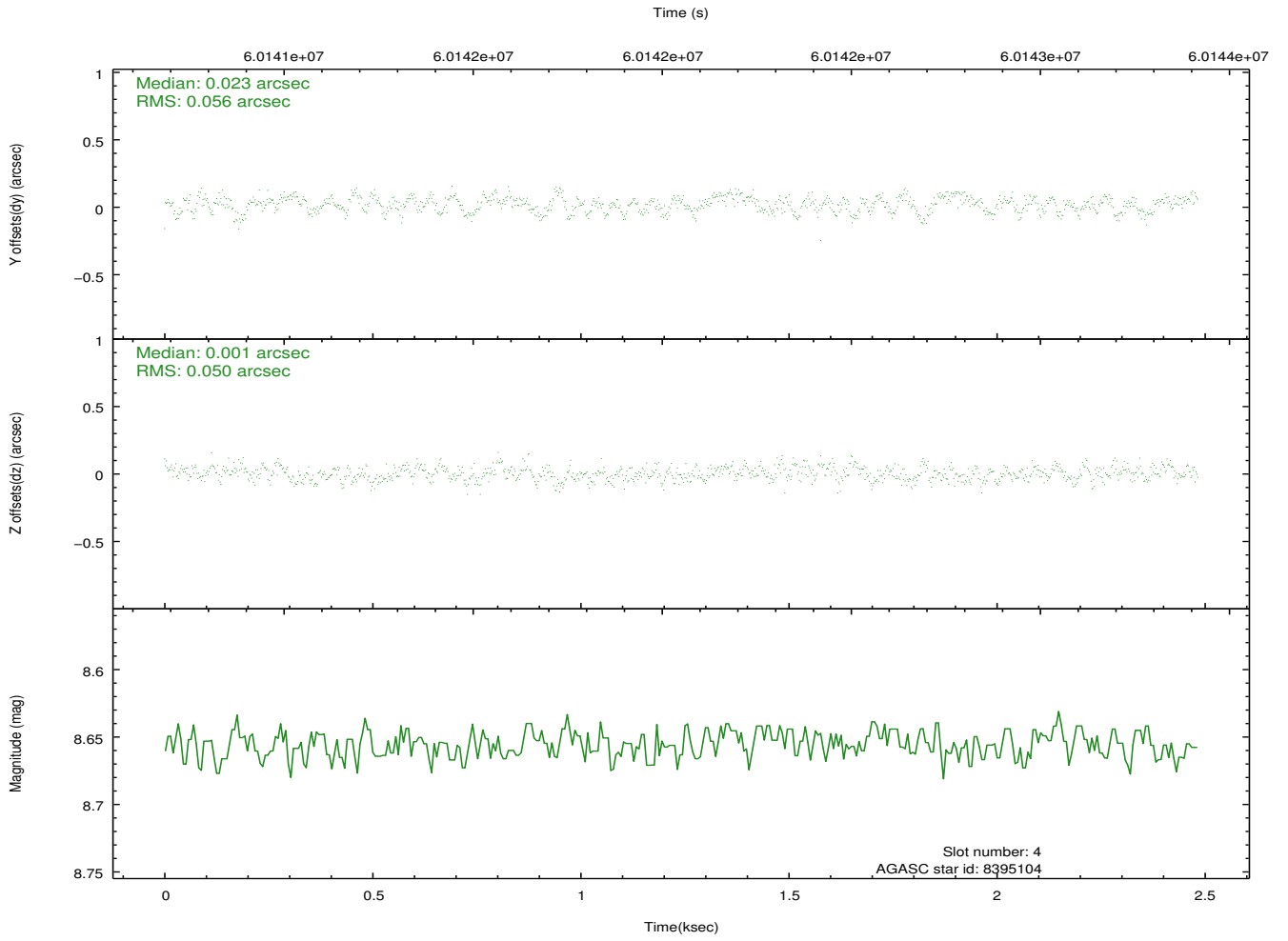
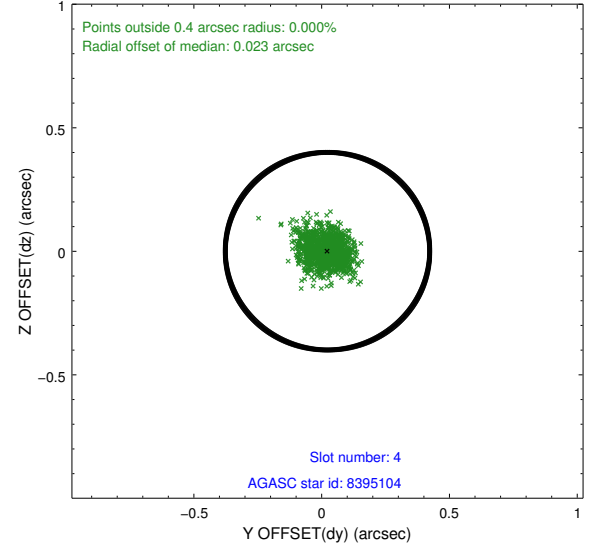
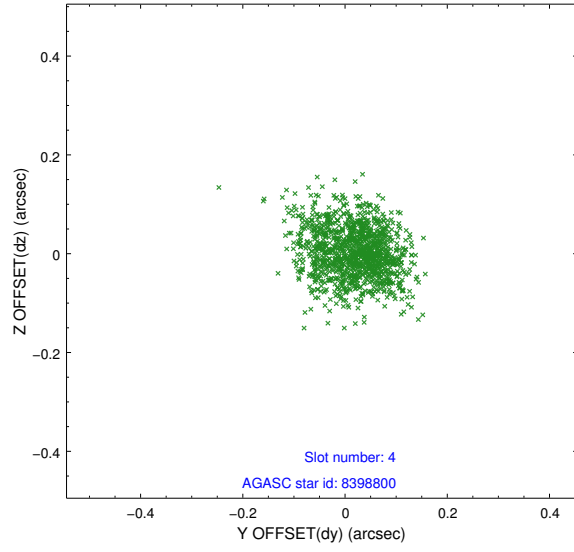
| slot | status | id | mag | n_pts | med_dy | med_dz | dr1 | dr2 | ra | dec | mean_y | mean_z |
|------|--------|---------|------|-------|--------|--------|-------|-------|-----------|----------|----------|----------|
| 0 | FID | HRC-I-1 | 6.97 | 1212 | -0.002 | -0.063 | 0.012 | 0.042 | 0.000000 | 0.000000 | -756.18 | -1288.67 |
| 1 | FID | HRC-I-3 | 7.05 | 1212 | 0.051 | -0.038 | 0.012 | 0.037 | 0.000000 | 0.000000 | -1185.31 | 1014.83 |
| 2 | FID | HRC-I-4 | 6.99 | 1212 | 0.066 | 0.011 | 0.006 | 0.011 | 0.000000 | 0.000000 | 1285.63 | 1014.46 |
| 3 | GUIDE | 8398800 | 8.70 | 1212 | -0.039 | -0.007 | 0.069 | 0.121 | 54.242352 | 0.922024 | -843.78 | 1223.29 |
| 4 | GUIDE | 8395104 | 8.65 | 1212 | 0.023 | 0.001 | 0.080 | 0.126 | 54.744893 | 0.796520 | 998.96 | 1504.44 |
| 5 | GUIDE | 8395504 | 9.76 | 1211 | 0.031 | 0.009 | 0.105 | 0.167 | 54.466573 | 0.973564 | -169.62 | 1706.72 |
| 6 | GUIDE | 8399352 | 9.94 | 1209 | -0.019 | -0.006 | 0.147 | 0.232 | 53.946831 | 1.204693 | -2217.59 | 1754.00 |
| 7 | UNUSED | | 0.00 | 0 | 0.000 | 0.000 | 0.000 | 0.000 | 0.000000 | 0.000000 | 0.00 | 0.00 |

2.4 Star Slots

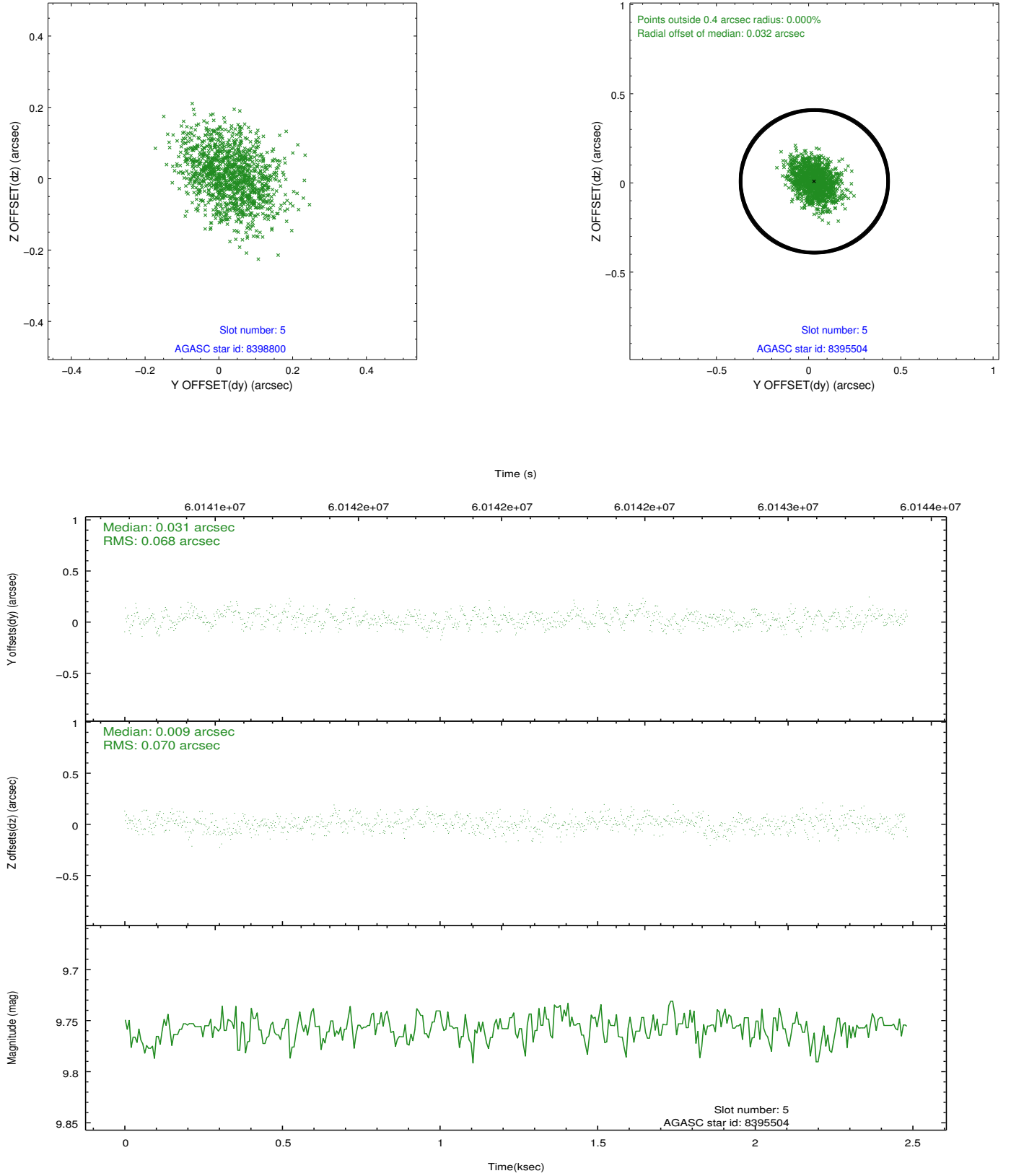
2.4.1 Slot 3



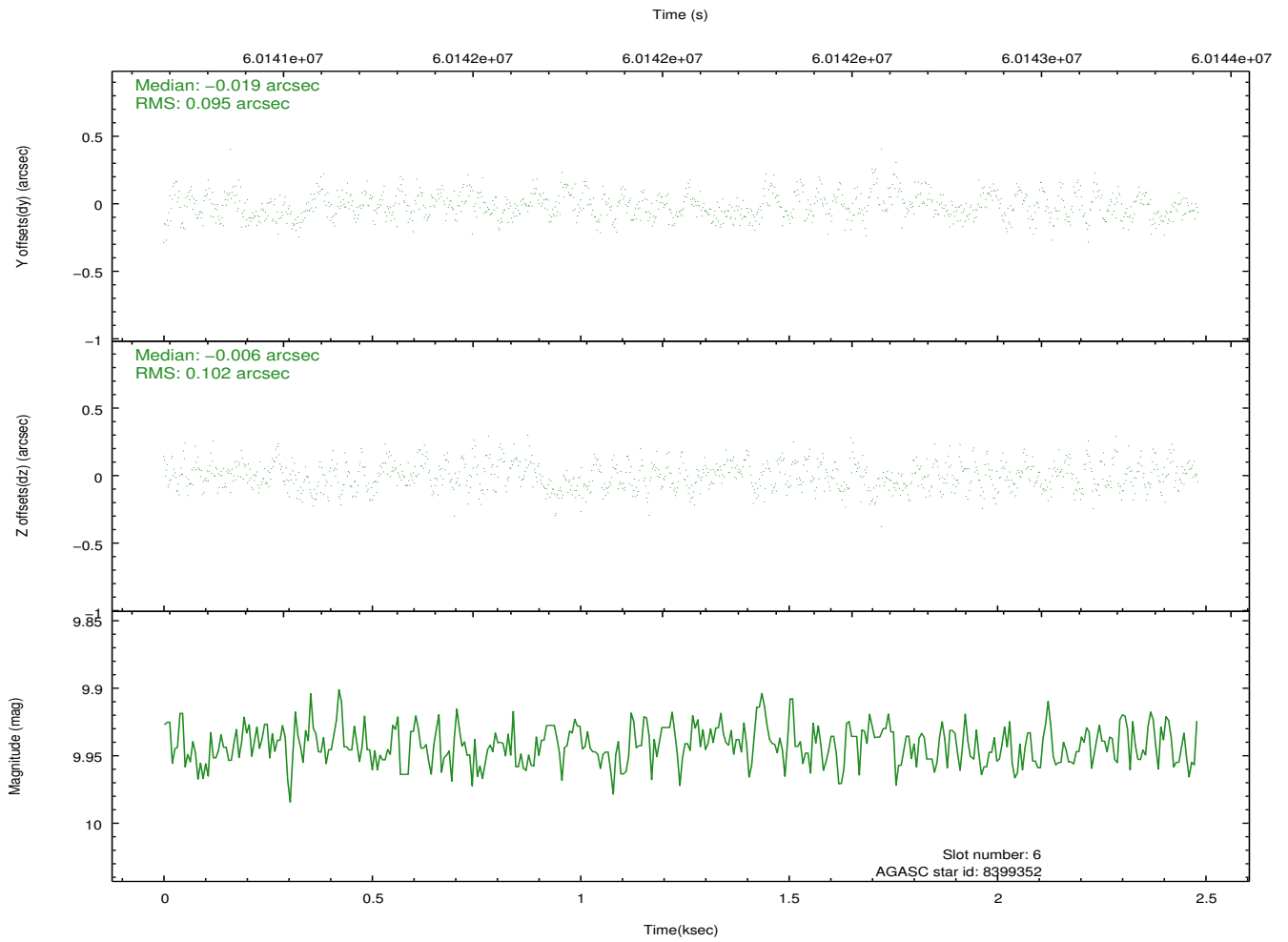
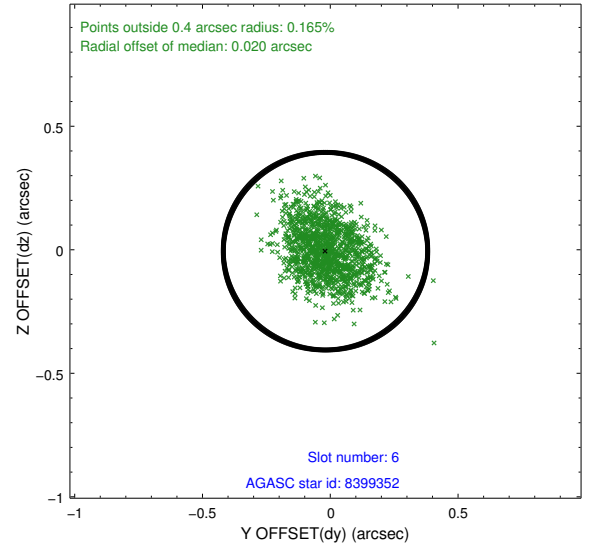
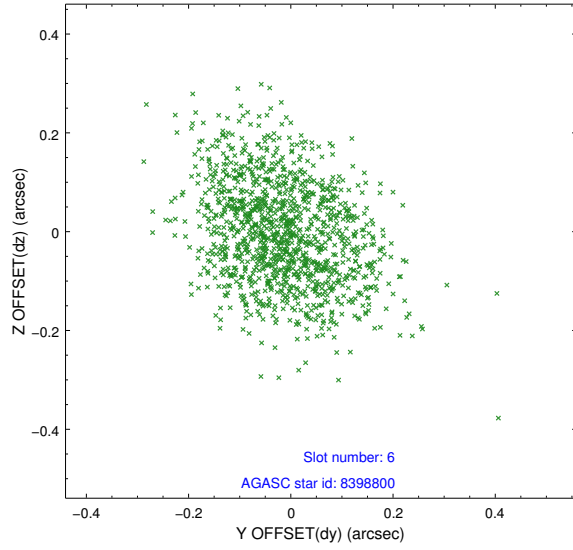
2.4.2 Slot 4



2.4.3 Slot 5

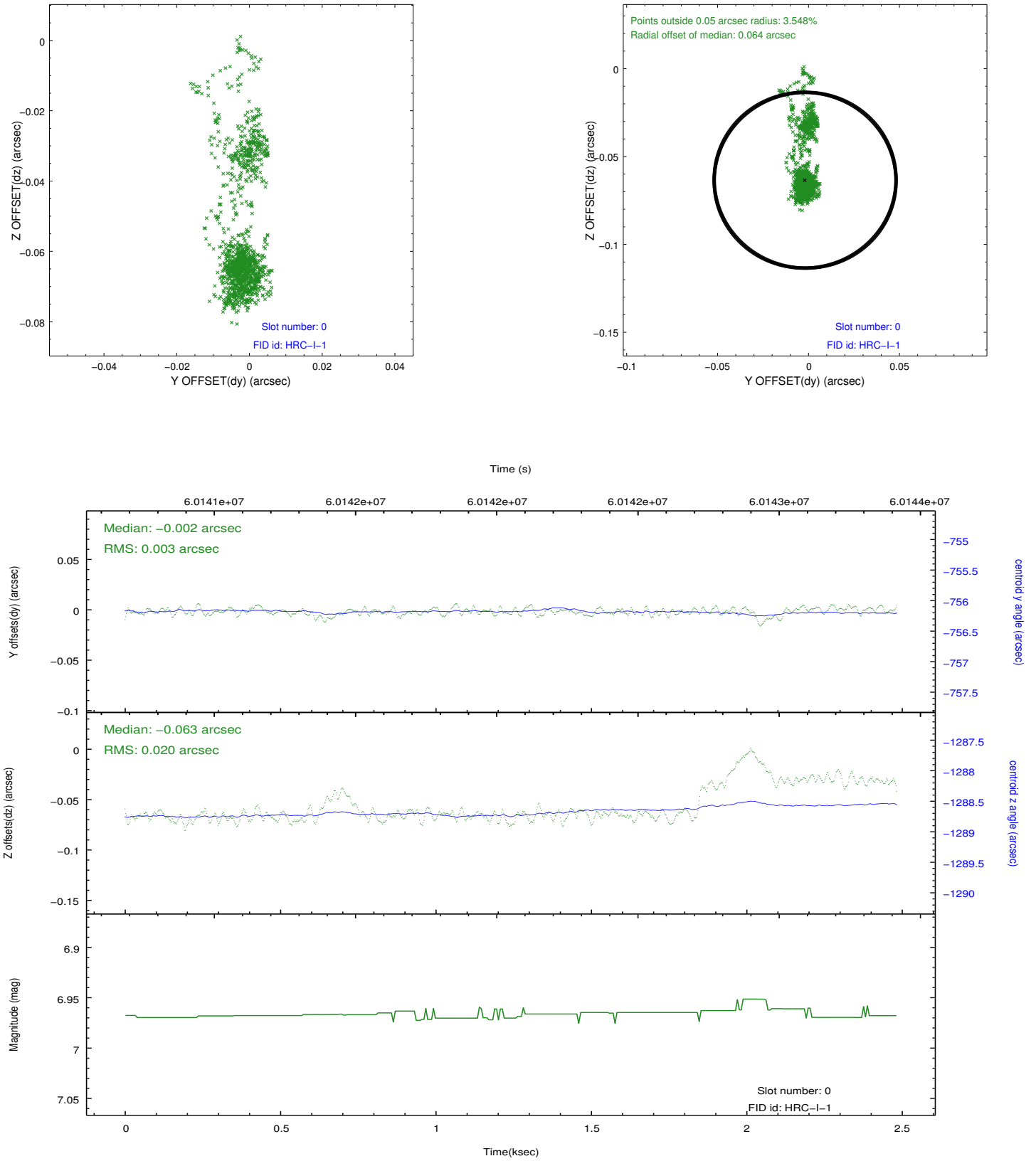


2.4.4 Slot 6

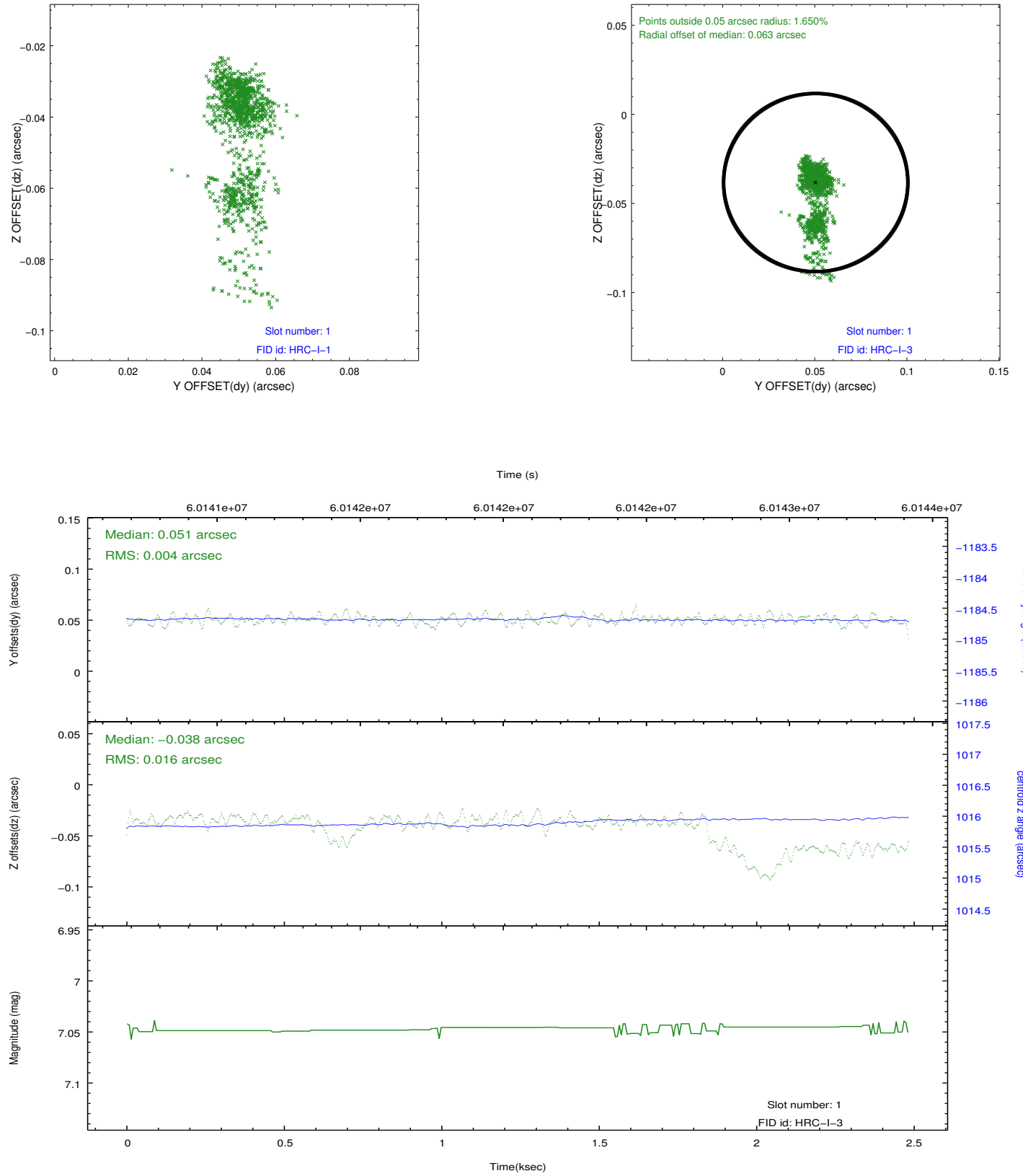


2.5 FID Slots

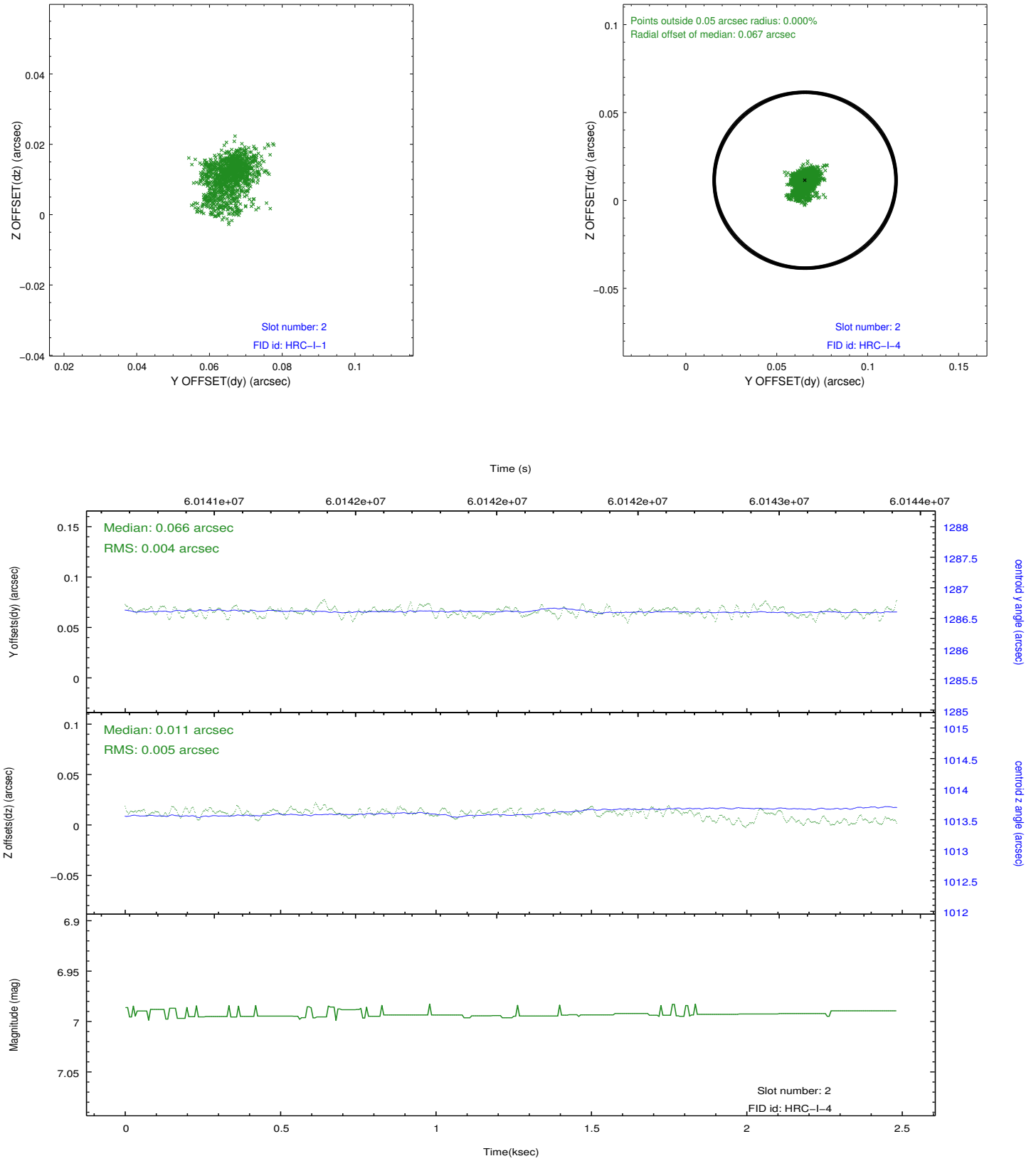
2.5.1 Slot 0



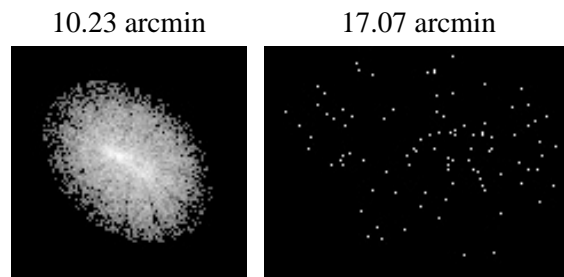
2.5.2 Slot 1



2.5.3 Slot 2



3 Point Sources



A Summary

A.1 Status

| | |
|----------------------------|-------------|
| V&V Scientist | Joy Nichols |
| V&V Date (YYYY-MM-DD) | 2009.12.01 |
| V&V Edition | 1 |
| V&V Disposition and Status | OK |
| V&V Charge Time | 2.276 |

A.2 Comments

HRC-I PSF calibration