

V&V Reference Report

L2 ASCDS Version : 8.1.1

Observation 1416 - L2 Version 5

Chandra X-Ray Center

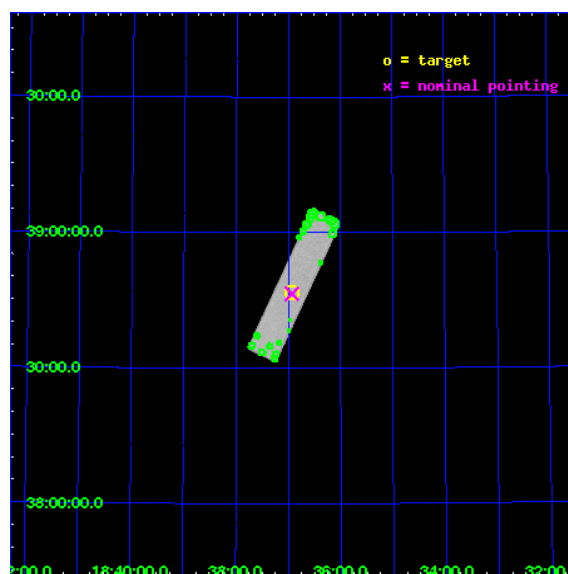
L2 Processing Date : Nov 20 2009

Contents

1	Front	2
2	OBI	3
2.1	OBI	3
2.1.1	Images	3
2.1.2	Parameters	4
2.1.3	Events	4
2.2	Compared Parameters	5
2.3	Aspect	6
2.4	Star Slots	9
2.4.1	Slot 3	9
2.4.2	Slot 4	10
2.4.3	Slot 5	11
2.4.4	Slot 6	12
2.4.5	Slot 7	13
2.5	FID Slots	14
2.5.1	Slot 0	14
2.5.2	Slot 1	15
2.5.3	Slot 2	16
3	Point Sources	17
A	Summary	18
A.1	Status	18
A.2	Comments	18

1 Front

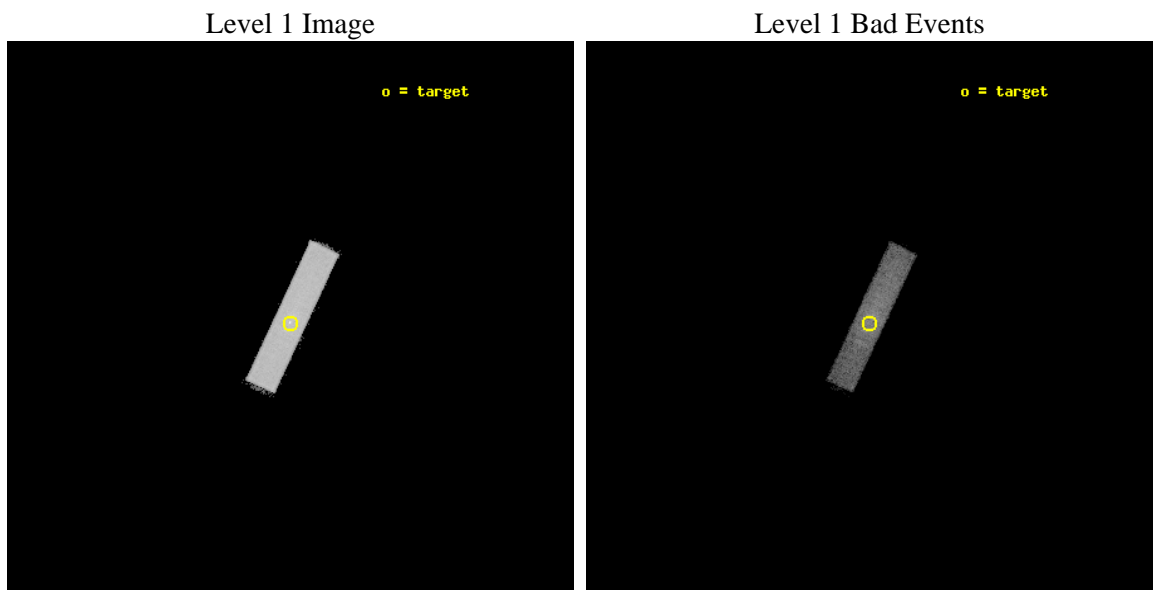
seq_num	280366	Sequence number
obs_id	1416	Observation id
title	TEST OF UV SENSITIVITY	Proposal title
observer	Dr. CXC Calibration	Principal investigator
object	VEGA	Source name
ra_targ	279.230833	Observer's specified target RA
dec_targ	38.7795	Observer's specified target Dec
ra_nom	279.2329030061	Nominal RA
dec_nom	38.774293784703	Nominal Dec
roll_nom	295.10732066959	Nominal Roll
revision	5	Processing version of data
ontime	3114.2063623518	[s]
livetime	3094.6329647371	Ontime multiplied by DTCOR
l2events	108593	Number of level 2 events



2 OBI

2.1 OBI

2.1.1 Images



2.1.2 Parameters

obi_num	0	Obi number	sched_exp_time	3000.000000	Scheduled observation exposure time
ascdsver	8.1.1	Processing system revision	ontime	3114.2063623518	[s]
caldbver	4.1.4	 	l1events	157608	Number of level 1 events
date	2009-11-20T18:45:55	Date and time of file creation			
revision	4	Processing version of data			

2.1.3 Events

Level 1 Events

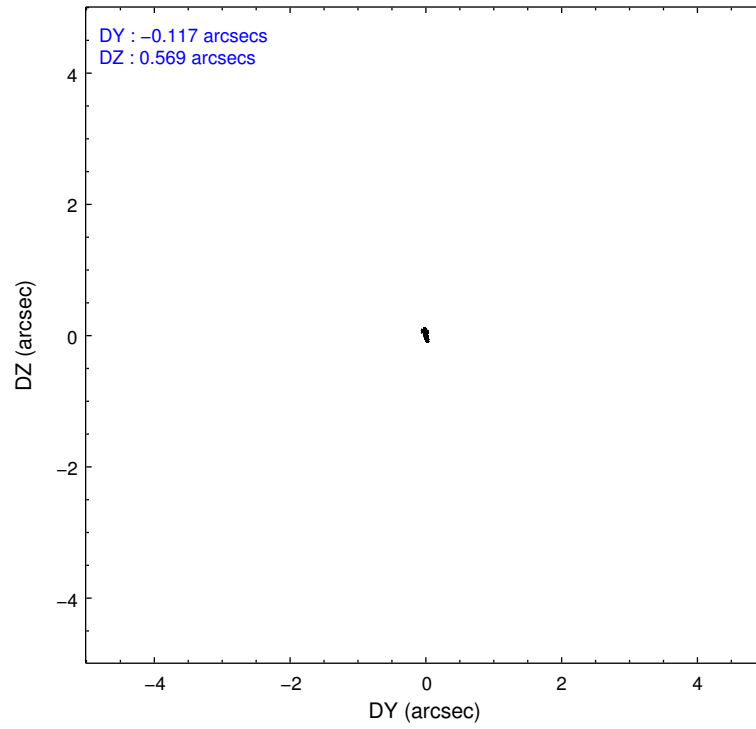
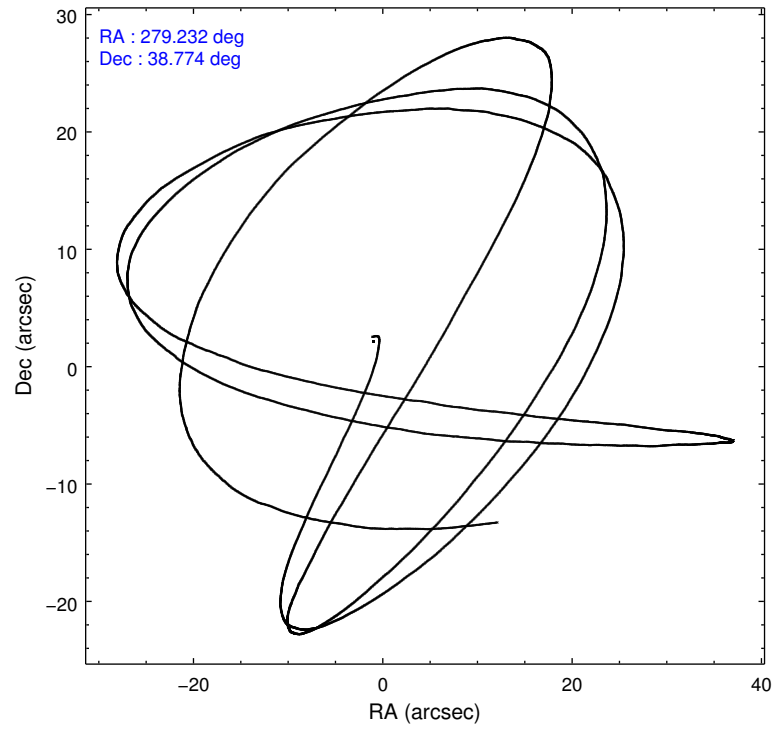
	segment 1	segment 2	segment 3
level 1 events	0	157608	0
rejected events	0	40649	0
rejected %	0%	25%	0%

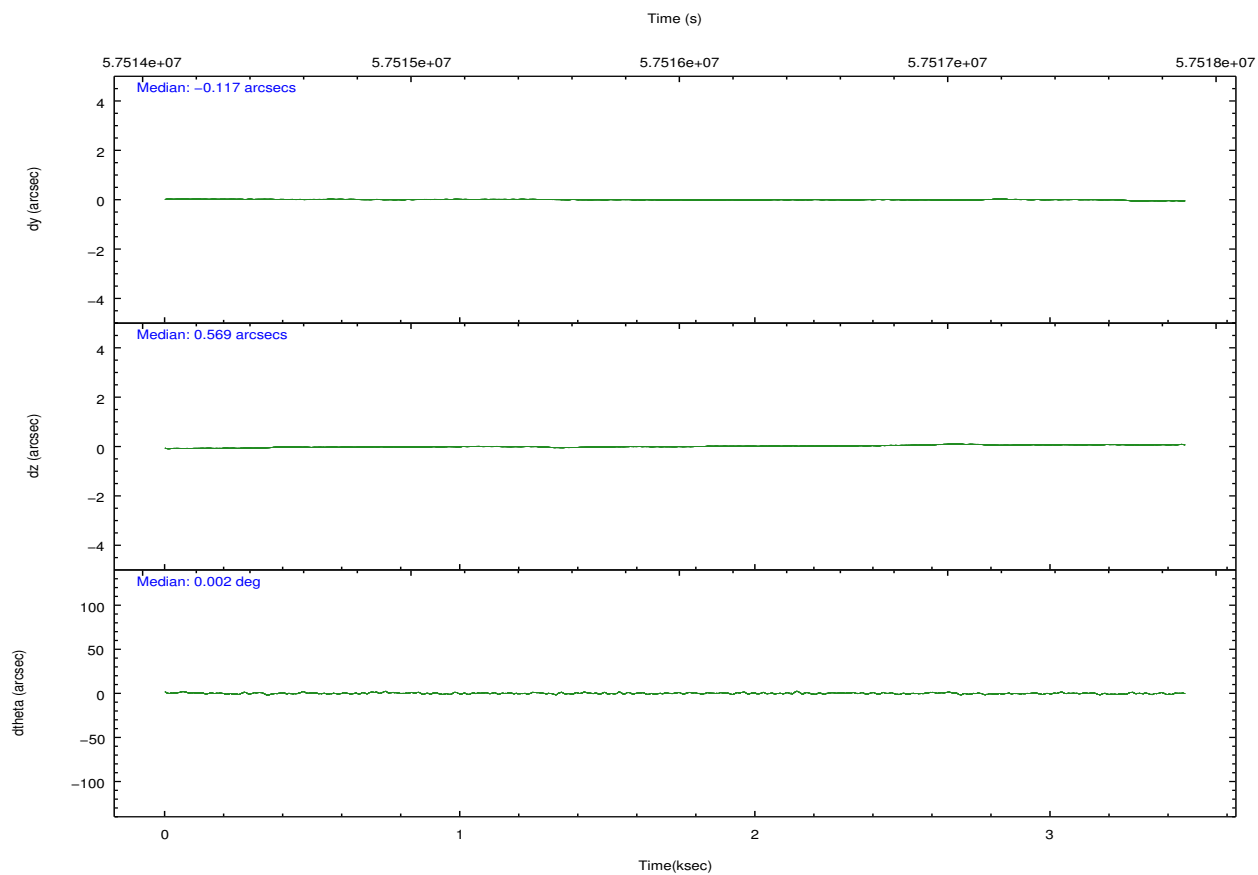
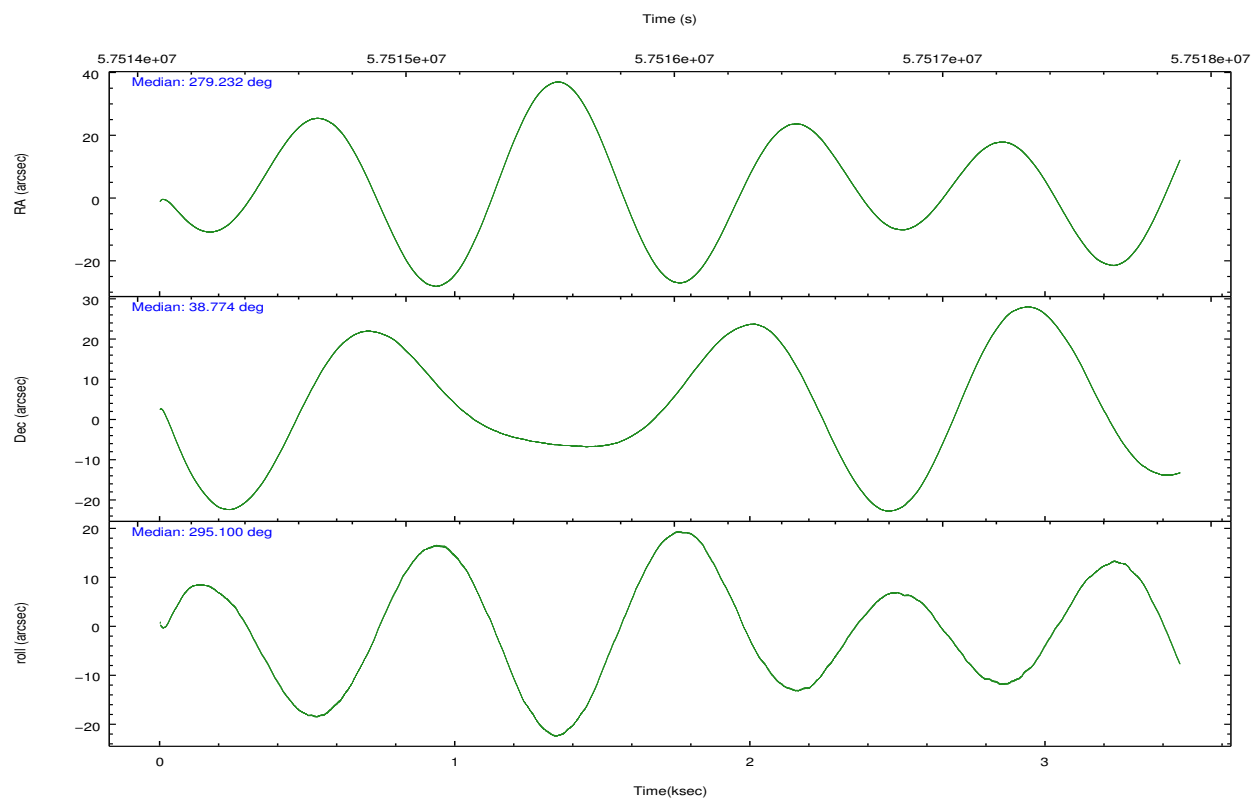
2.2 Compared Parameters

Parameter	Planned	Actual
Instrument	HRC	HRC
Detector	HRC-S	HRC-S
Grating	NONE	NONE
Data mode	OBSERVING	OBSERVING
Observation mode	POINTING	POINTING
Pointing RA	279.202126	279.2329030061037
Pointing Dec	38.790378	38.77429378470341
Pointing Roll	295.059259	295.1073206695884
SIM focus pos (mm)	-1.536095	-1.608774427437079
SIM defocus (mm)	-0.002758228956671258	-0.07543778803278212
SIM translation stage pos (mm)	250.455976	250.466033080201
SIM translation stage offset (mm)	0	-0.01005468664627074
Observation start time	57514713.184000	57514061.284396
Observation start date	1999-10-28T16:17:29	1999-10-28T16:07:41
Observation end time	57517713.184000	57517847.122032
Observation end date	1999-10-28T17:07:29	1999-10-28T17:10:47

Parameter	Planned	Actual
Obspar format version number	6	6
Obspar file type	PREDICTED	ACTUAL
Obspar update status	NONE	UPDATED

2.3 Aspect



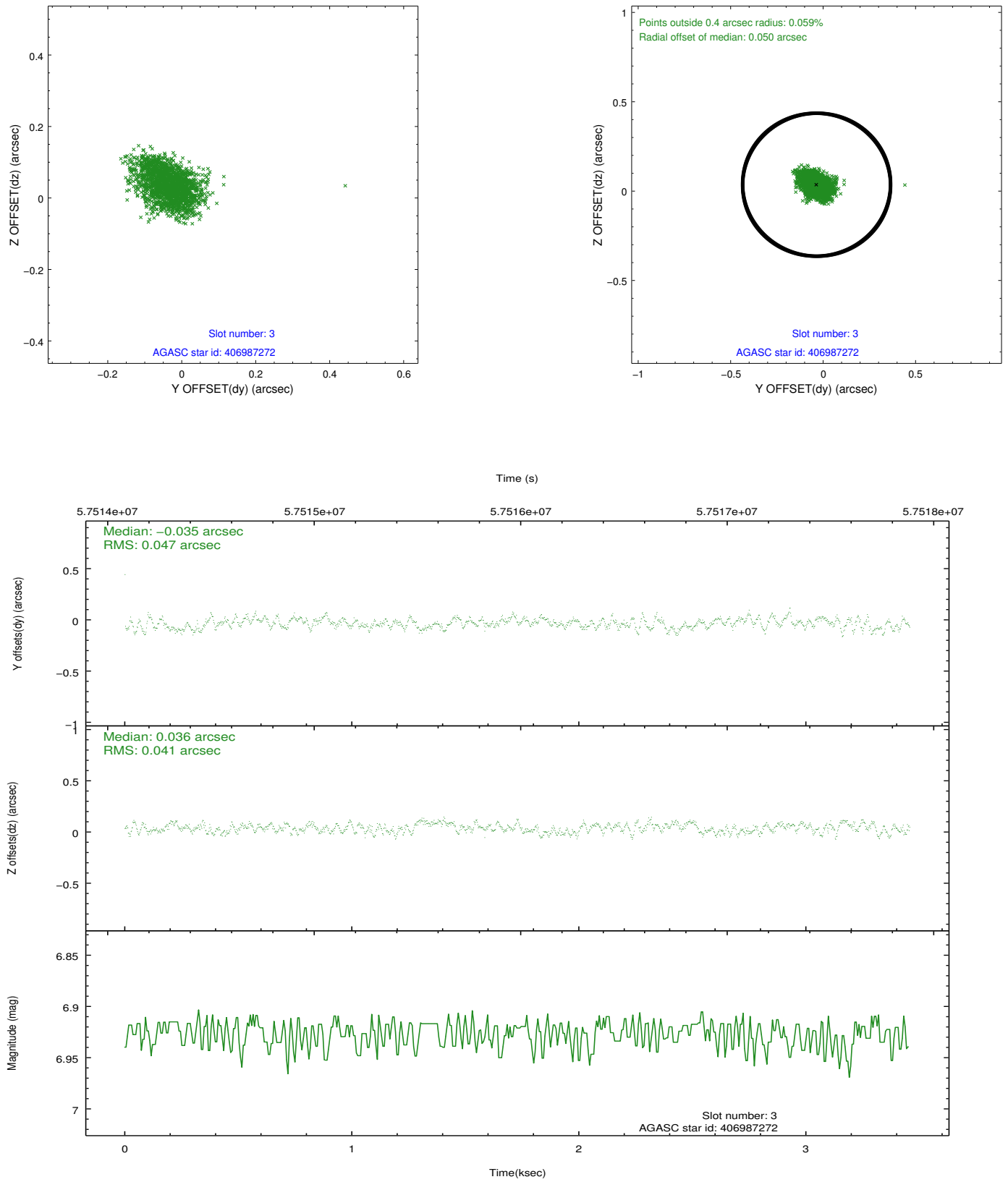


Slot Statistics

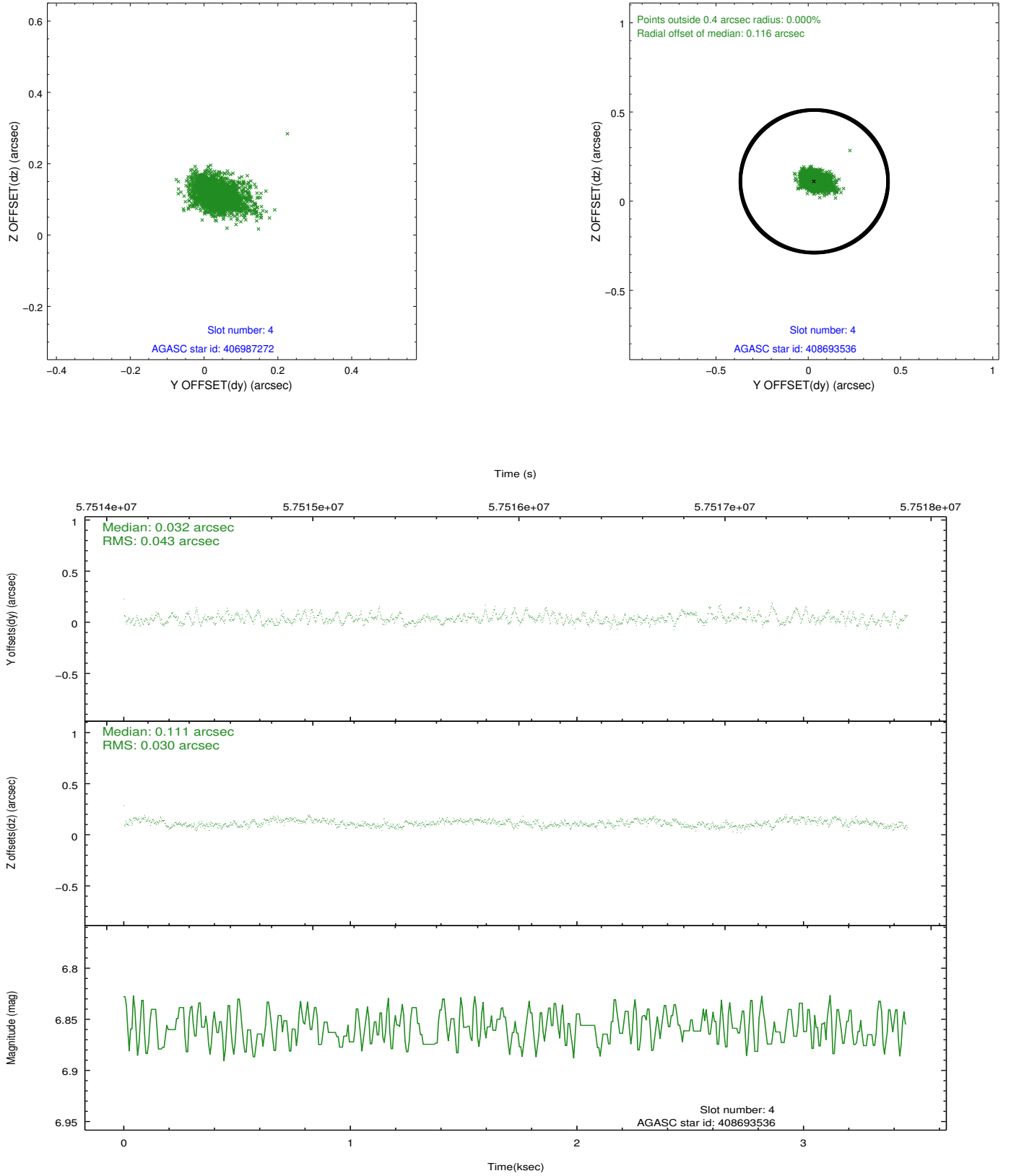
slot	status	id	mag	n_pts	med_dy	med_dz	dr1	dr2	ra	dec	mean_y	mean_z
0	FID	HRC-S-2	6.96	1687	0.137	-0.029	0.008	0.013	0.000000	0.000000	1245.76	-441.58
1	FID	HRC-S-3	7.00	1687	0.117	-0.097	0.005	0.009	0.000000	0.000000	-1155.79	580.47
2	FID	HRC-S-4	6.97	1687	0.152	-0.169	0.008	0.013	0.000000	0.000000	1243.76	583.33
3	GUIDE	406987272	6.93	1687	-0.035	0.036	0.066	0.105	278.536588	38.437504	349.94	-2233.34
4	GUIDE	408693536	6.86	1687	0.032	0.111	0.054	0.090	280.050821	38.367191	2384.68	1530.41
5	GUIDE	406985256	8.62	1687	-0.081	-0.132	0.058	0.098	278.693335	38.842203	-775.43	-1209.16
6	GUIDE	406980288	9.31	1685	0.027	0.019	0.082	0.135	278.903147	39.061646	-1240.30	-341.98
7	GUIDE	408696904	9.97	1686	0.053	-0.033	0.130	0.203	280.049074	38.878750	706.16	2291.21

2.4 Star Slots

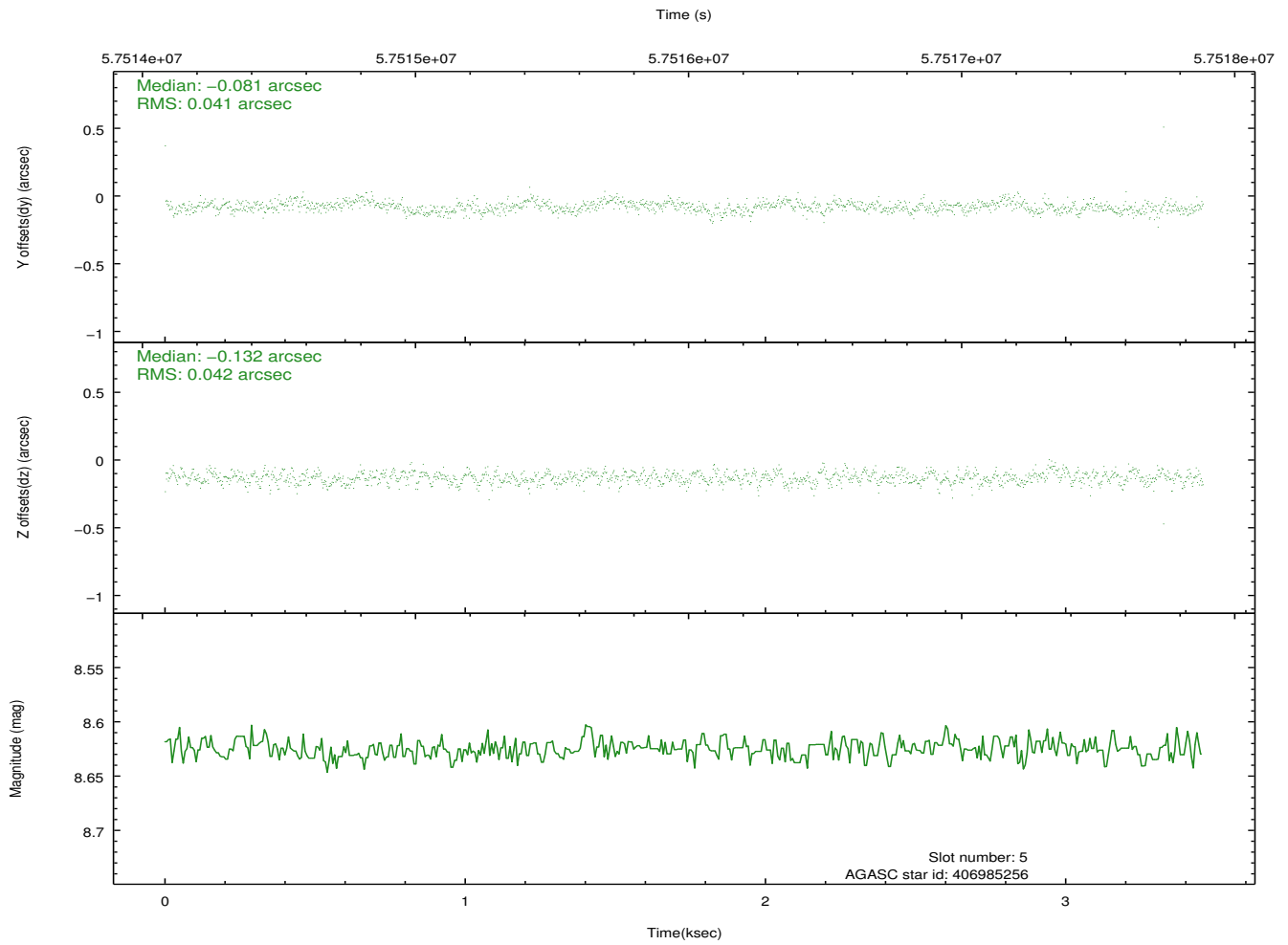
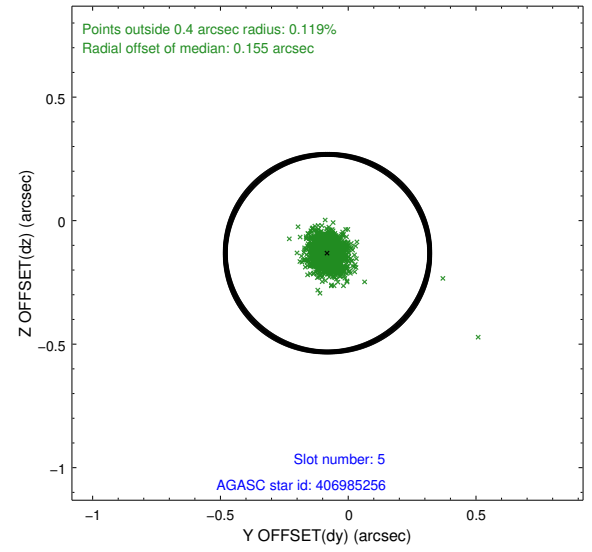
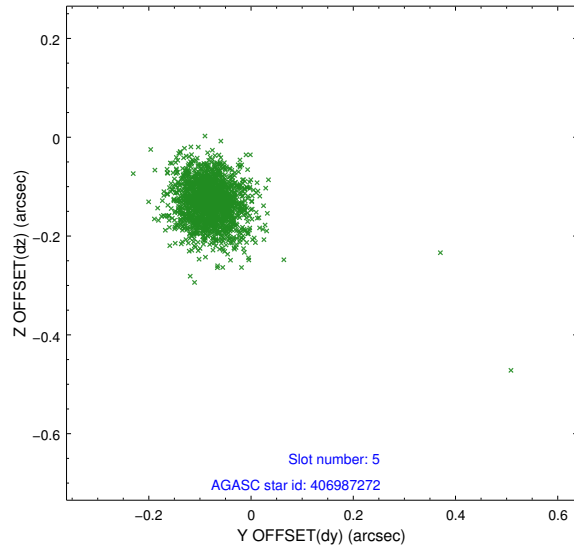
2.4.1 Slot 3



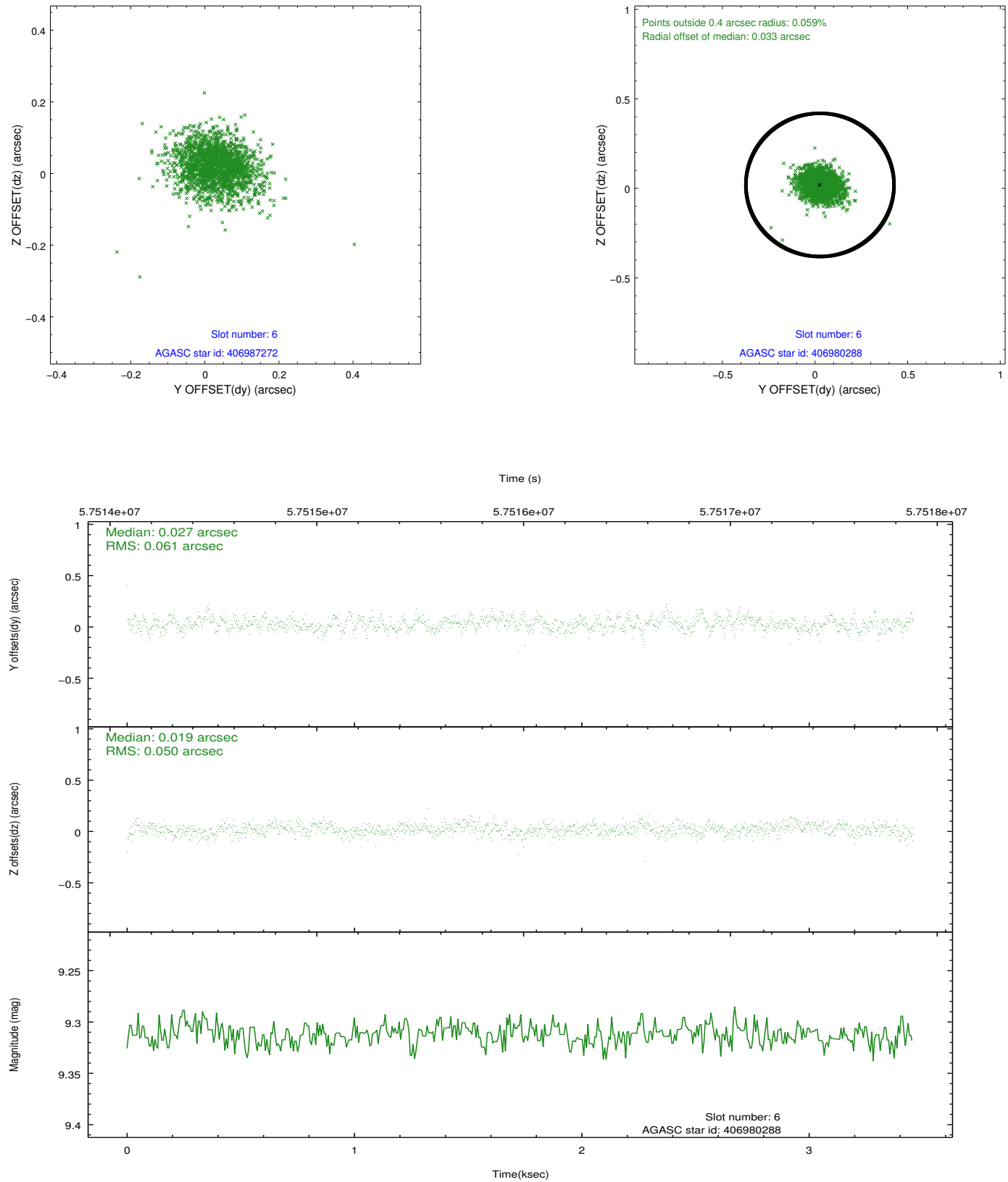
2.4.2 Slot 4



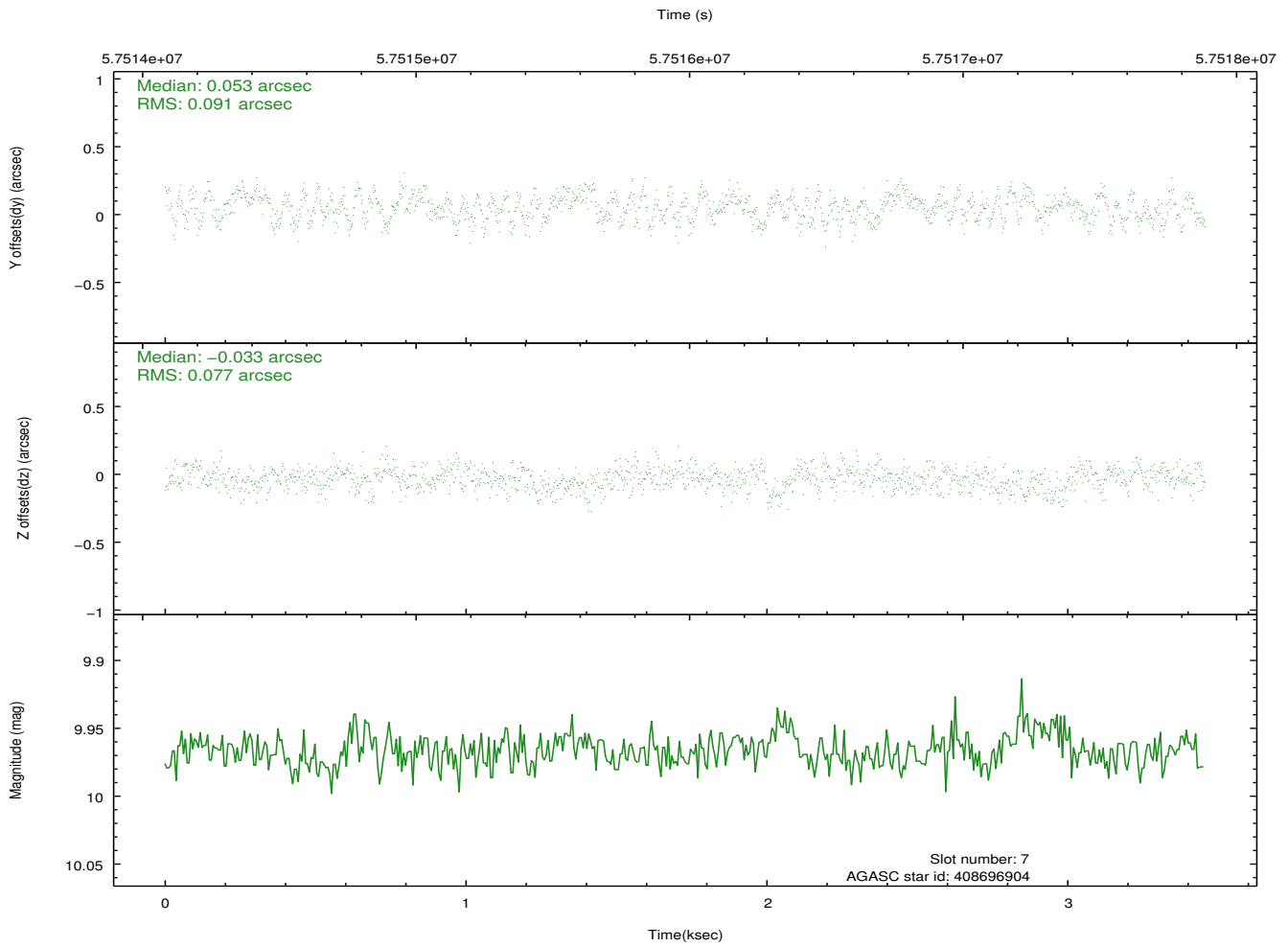
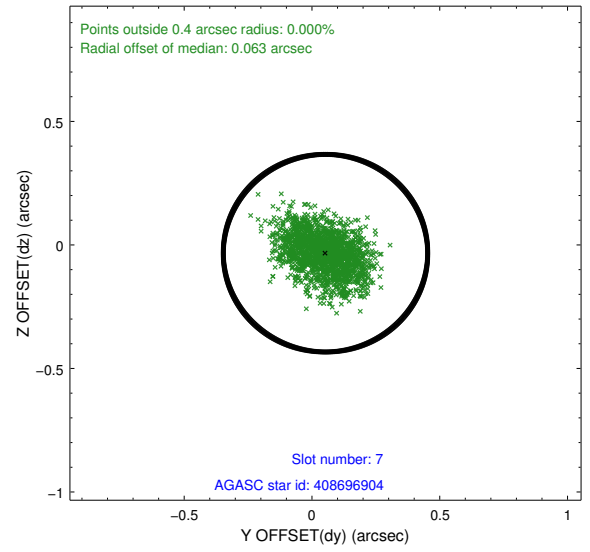
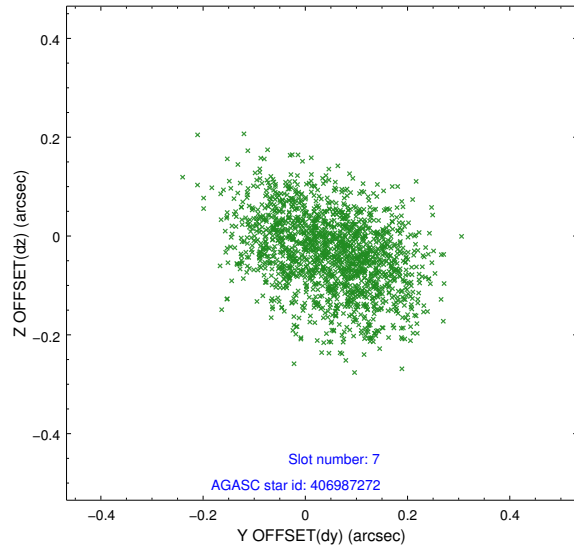
2.4.3 Slot 5



2.4.4 Slot 6

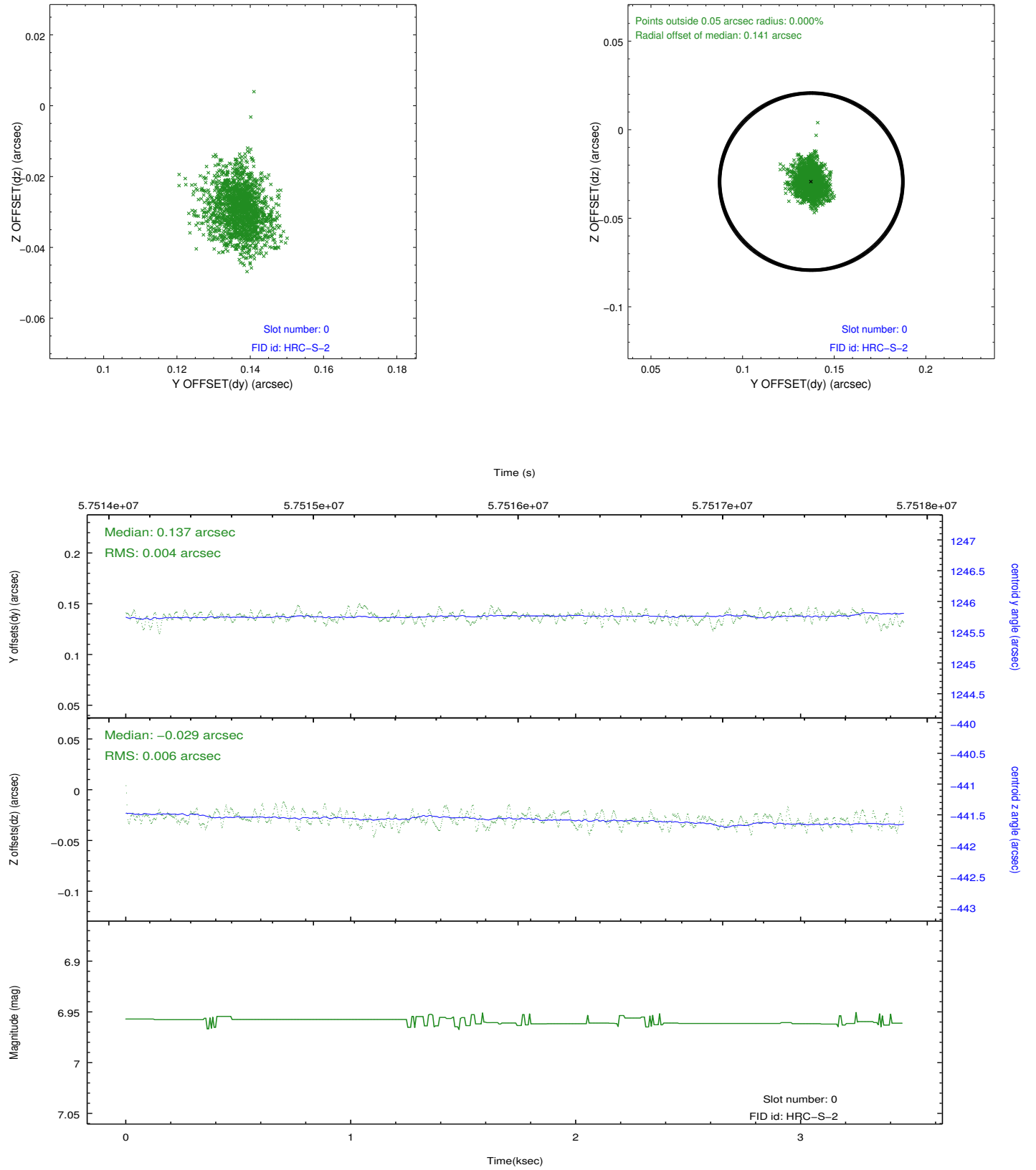


2.4.5 Slot 7

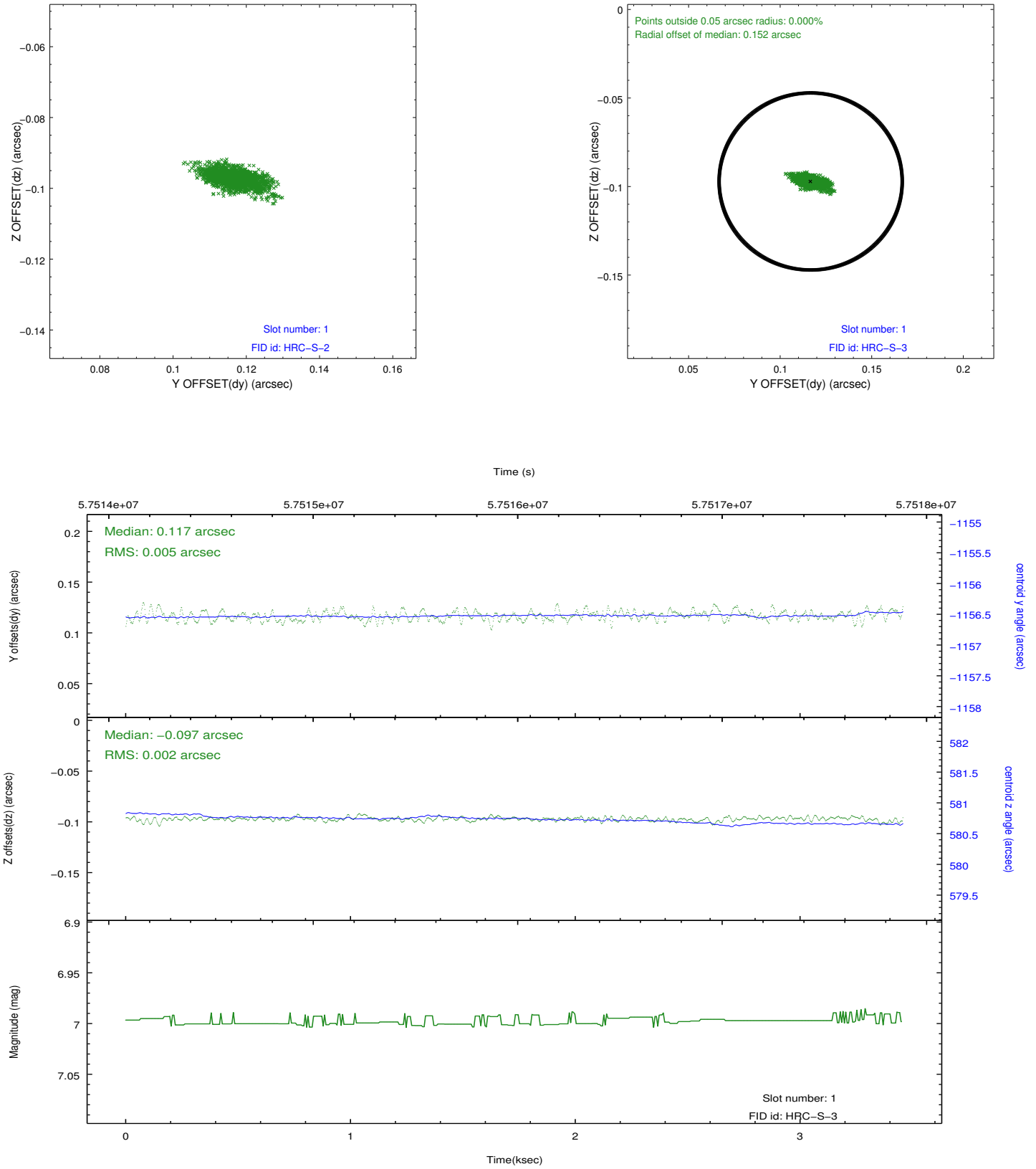


2.5 FID Slots

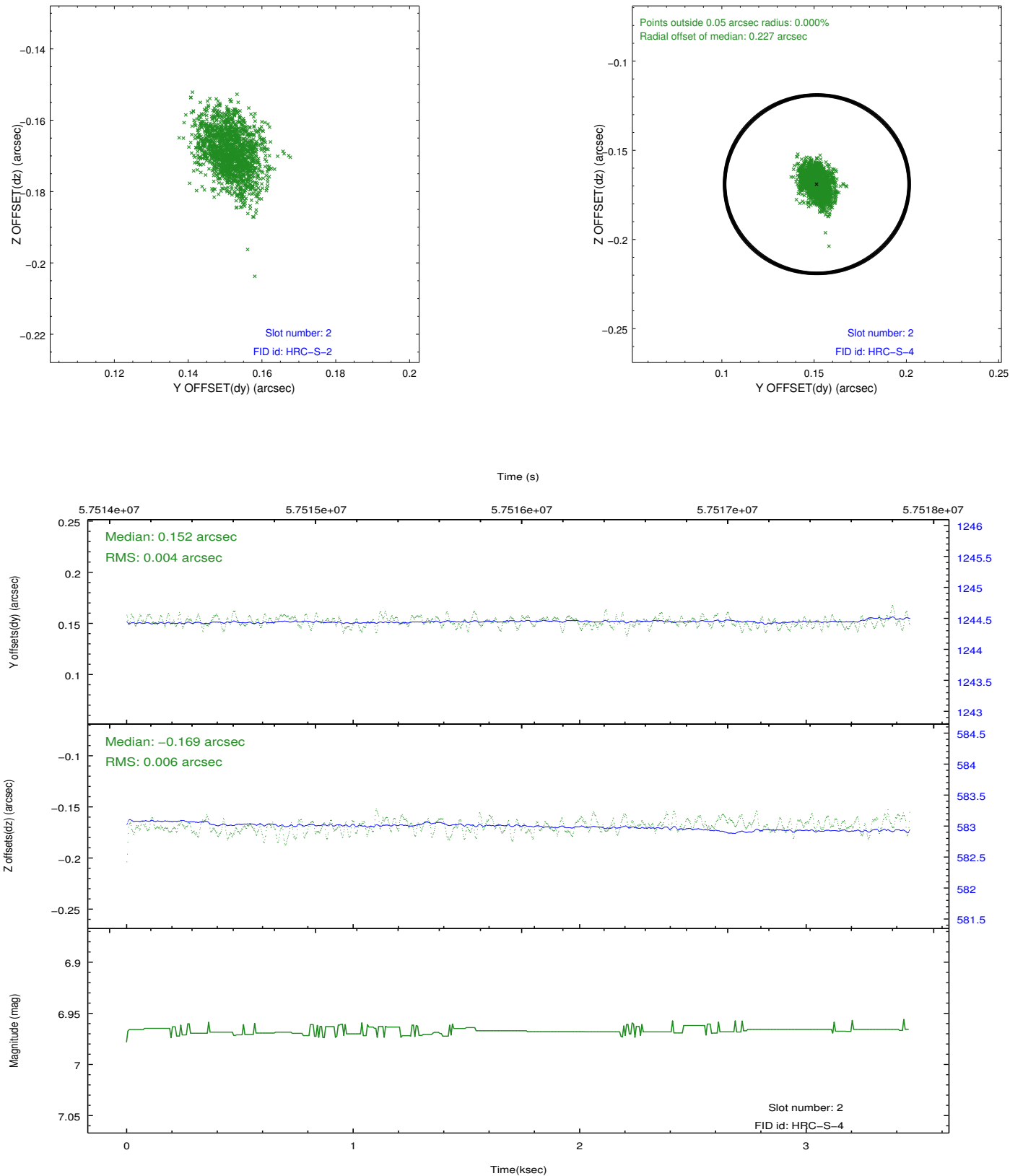
2.5.1 Slot 0



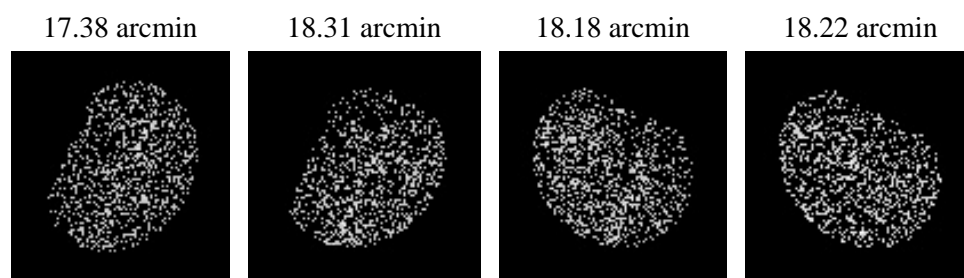
2.5.2 Slot 1



2.5.3 Slot 2



3 Point Sources



A Summary

A.1 Status

V&V Scientist	Joy Nichols
V&V Date (YYYY-MM-DD)	2009.11.25
V&V Edition	1
V&V Disposition and Status	OK
V&V Charge Time	3.112

A.2 Comments