

V&V Reference Report

L2 ASCDS Version : 8.1.1

Observation 1401 - L2 Version 4

Chandra X-Ray Center

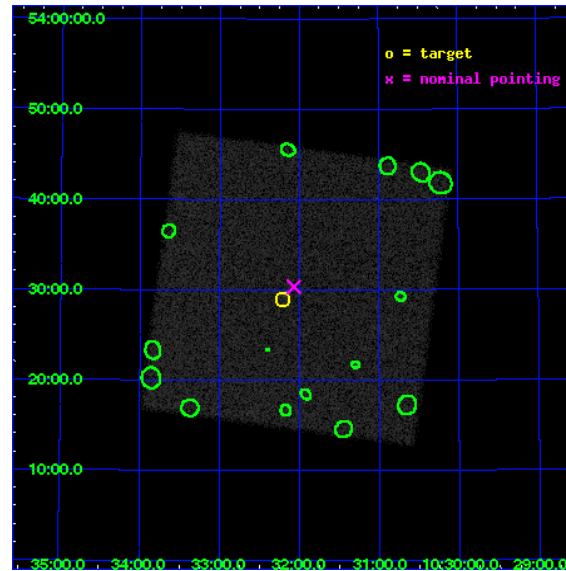
L2 Processing Date : Nov 20 2009

Contents

1	Front	2
2	OBI	3
2.1	OBI	3
2.1.1	Images	3
2.1.2	Parameters	4
2.1.3	Events	4
2.2	Compared Parameters	5
2.3	Aspect	6
2.4	Star Slots	9
2.4.1	Slot 3	9
2.4.2	Slot 4	10
2.4.3	Slot 5	11
2.4.4	Slot 6	12
2.4.5	Slot 7	13
2.5	FID Slots	14
2.5.1	Slot 0	14
2.5.2	Slot 1	15
2.5.3	Slot 2	16
3	Point Sources	17
A	Summary	18
A.1	Status	18
A.2	Comments	18

1 Front

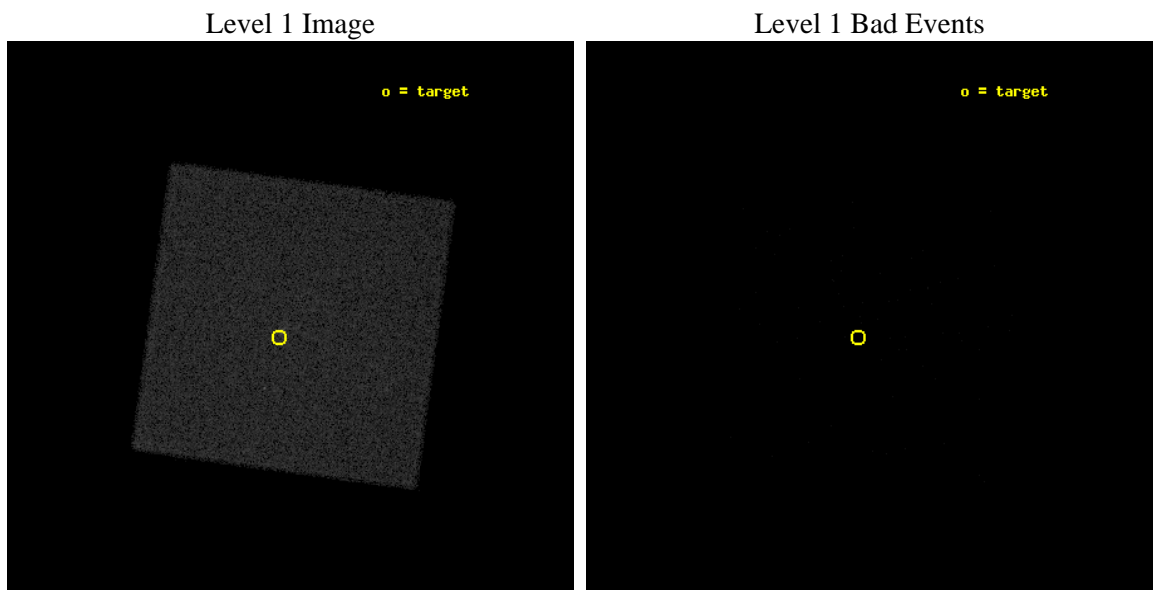
seq_num	280351	Sequence number
obs_id	1401	Observation id
title	OFF-AXIS PSF USING 2RE J1032+532	Proposal title
observer	Dr. CXC Calibration	Principal investigator
object	2REJ1032+532,ZOFF=2	Source name
ra_targ	158.054167	Observer's specified target RA
dec_targ	53.483333	Observer's specified target Dec
ra_nom	158.01718570437	Nominal RA
dec_nom	53.505782605156	Nominal Dec
roll_nom	52.776310383688	Nominal Roll
revision	4	Processing version of data
ontime	3276.1563681811	[s]
livetime	3254.8202164144	Ontime multiplied by DTCOR
l2events	104921	Number of level 2 events



2 OBI

2.1 OBI

2.1.1 Images



2.1.2 Parameters

obi_num	0	Obi number	sched_exp_time	3000.000000	Scheduled observation exposure time
ascdsver	8.1.1	Processing system revision	ontime	3276.1563681811	[s]
caldbver	4.1.4	 	l1events	160946	Number of level 1 events
date	2009-11-20T17:34:27	Date and time of file creation			
revision	4	Processing version of data			

2.1.3 Events

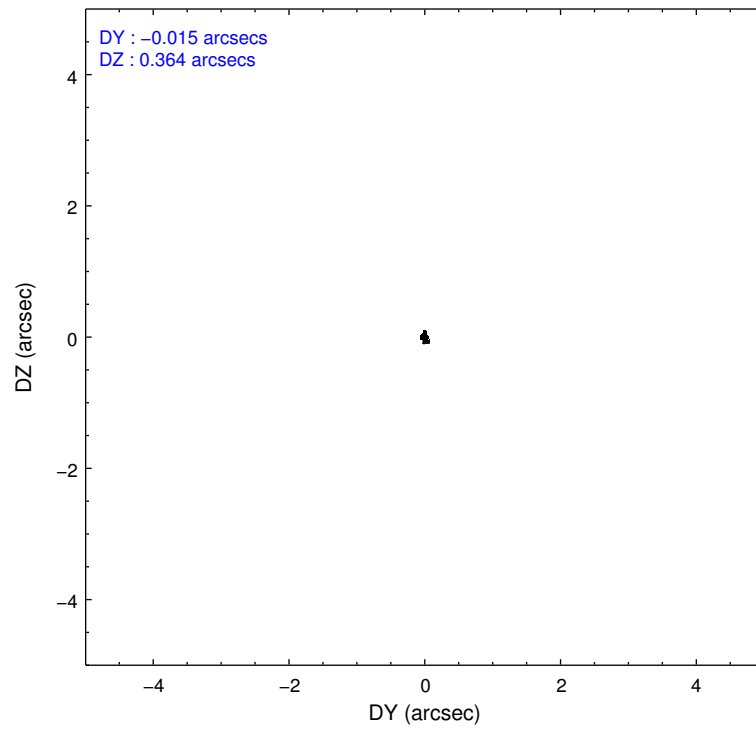
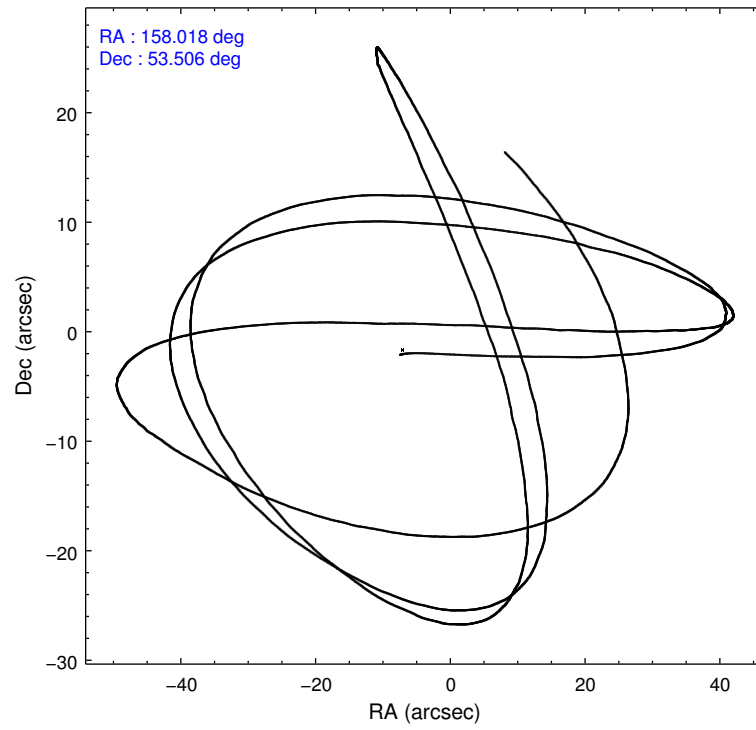
Level 1 Events

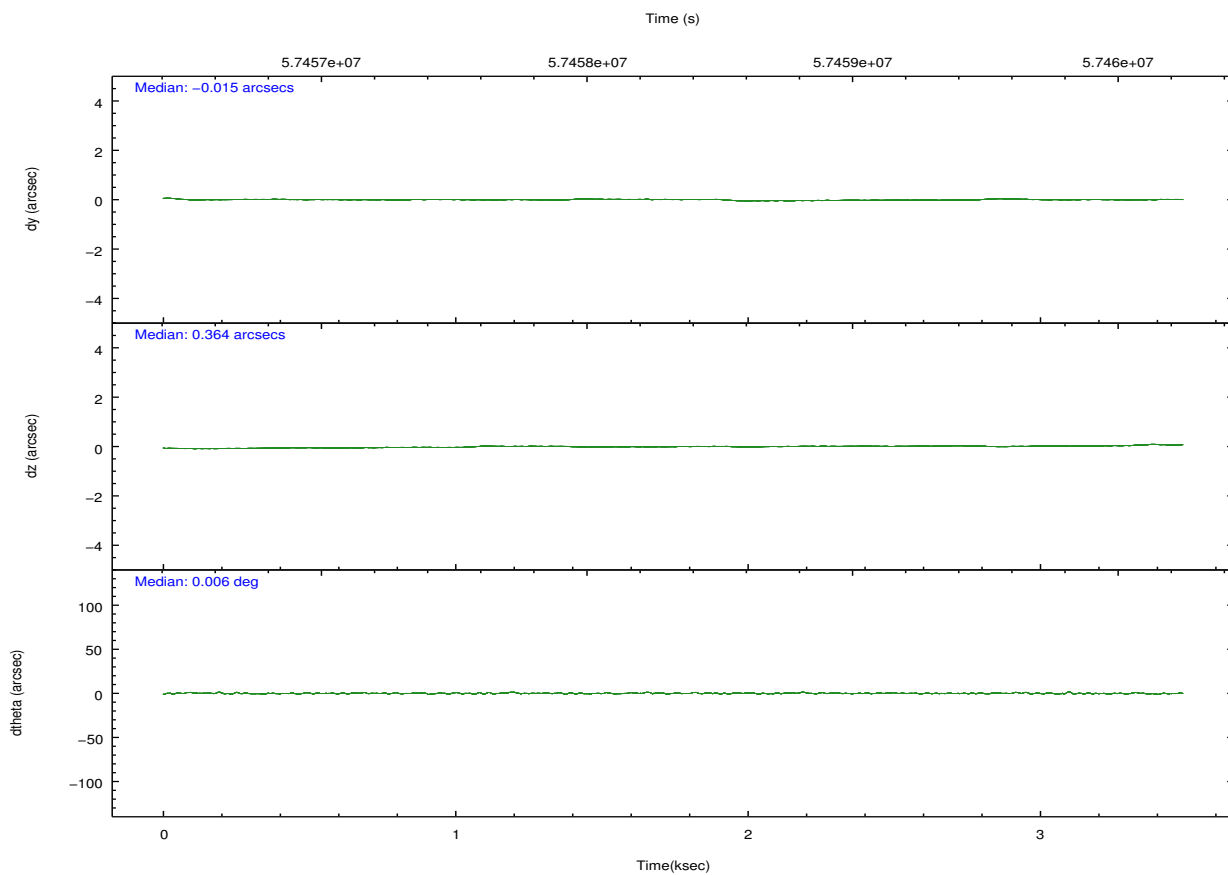
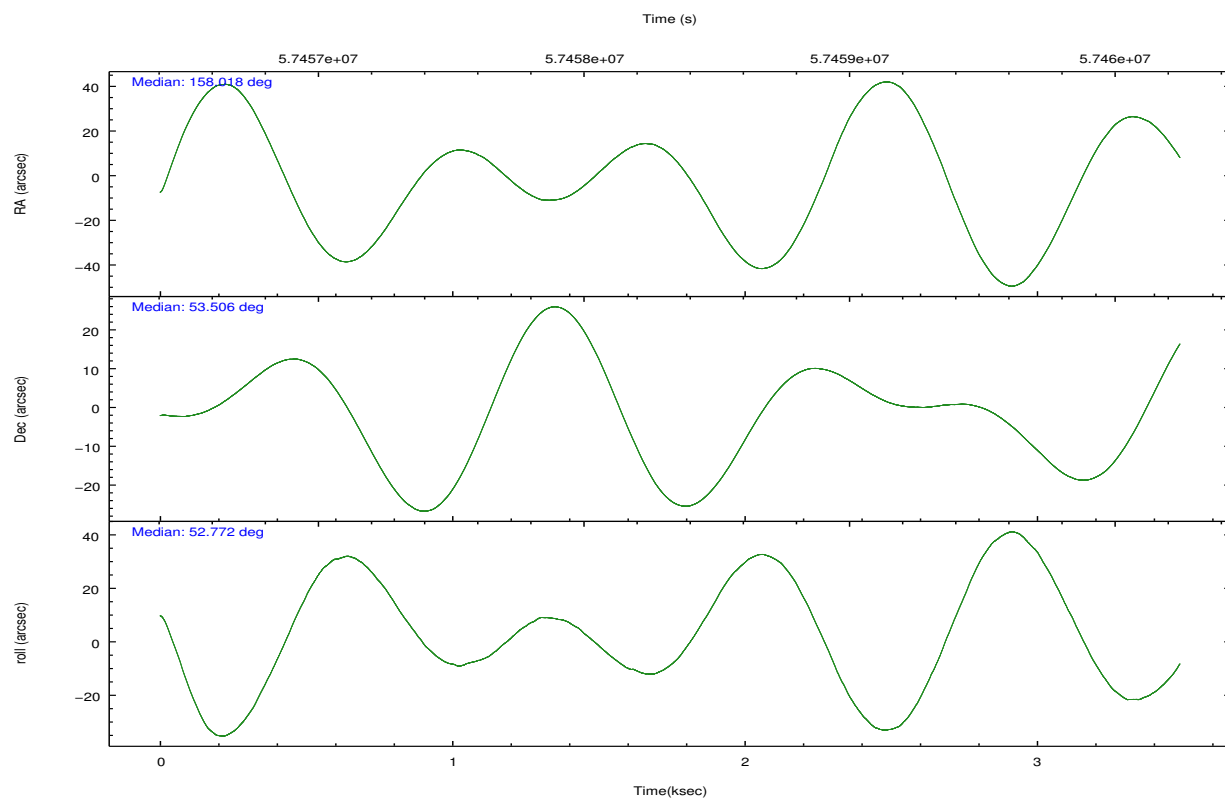
	segment 0
level 1 events	160946
rejected events	2479
rejected %	1%

2.2 Compared Parameters

Parameter	Planned	Actual	Parameter	Planned	Actual
Instrument	HRC	HRC	Obspar format version number	6	6
Detector	HRC-I	HRC-I	Obspar file type	PREDICTED	ACTUAL
Grating	NONE	NONE	Obspar update status	NONE	UPDATED
Data mode	OBSERVING	OBSERVING			
Observation mode	POINTING	POINTING			
Pointing RA	158.010890	158.0171857043657			
Pointing Dec	53.478592	53.5057826051564			
Pointing Roll	52.876849	52.77631038368792			
SIM focus pos (mm)	-1.040293	-1.038866356238299			
SIM defocus (mm)	0	0.001426264420575141			
SIM translation stage pos (mm)	126.985494	126.9854943052878			
SIM translation stage offset (mm)	0	-5.413686238853188e-06			
Observation start time	57457066.184000	57456400.419816			
Observation start date	1999-10-28T00:16:42	1999-10-28T00:06:40			
Observation end time	57460066.184000	57460201.119953			
Observation end date	1999-10-28T01:06:42	1999-10-28T01:10:01			

2.3 Aspect



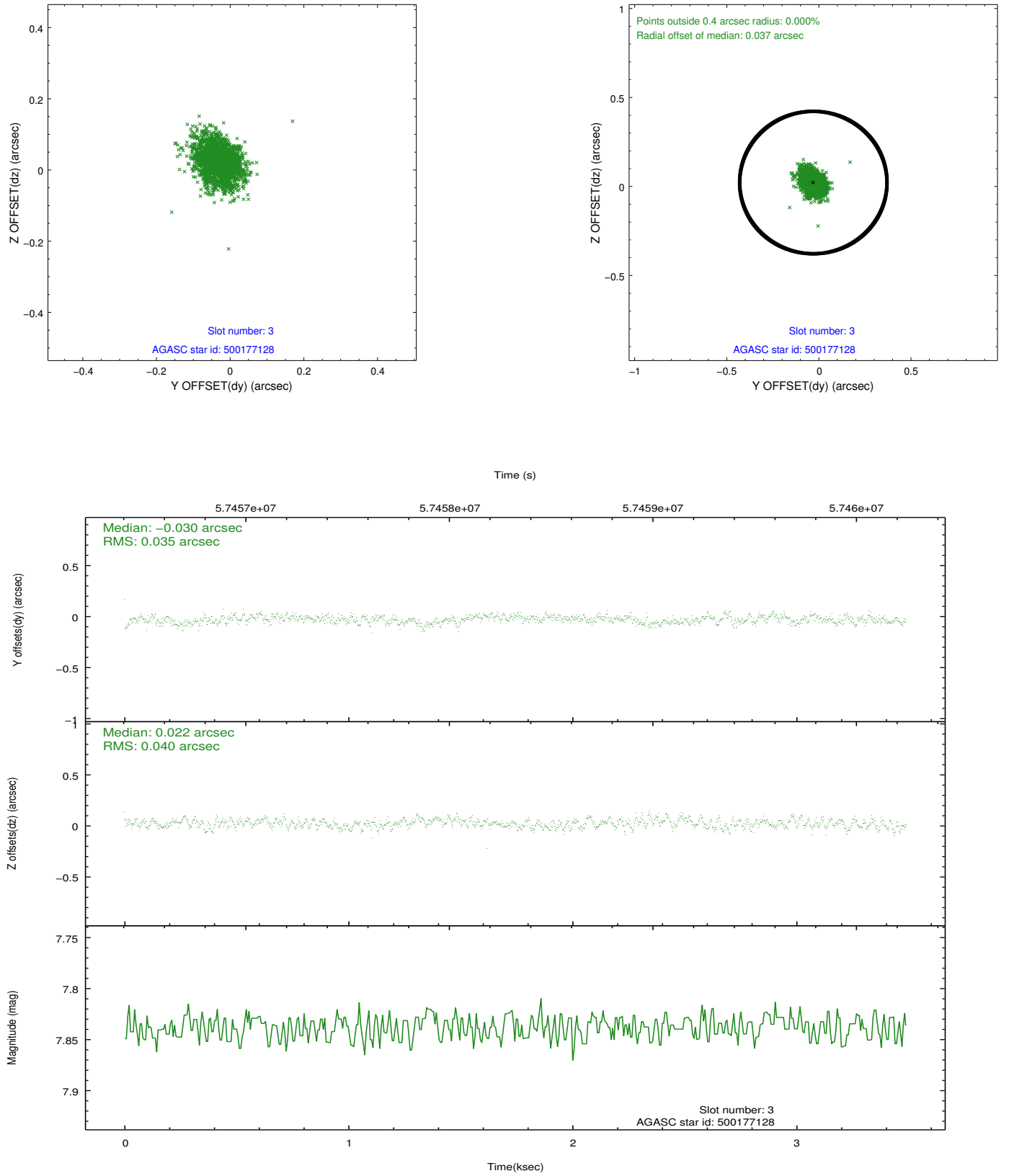


Slot Statistics

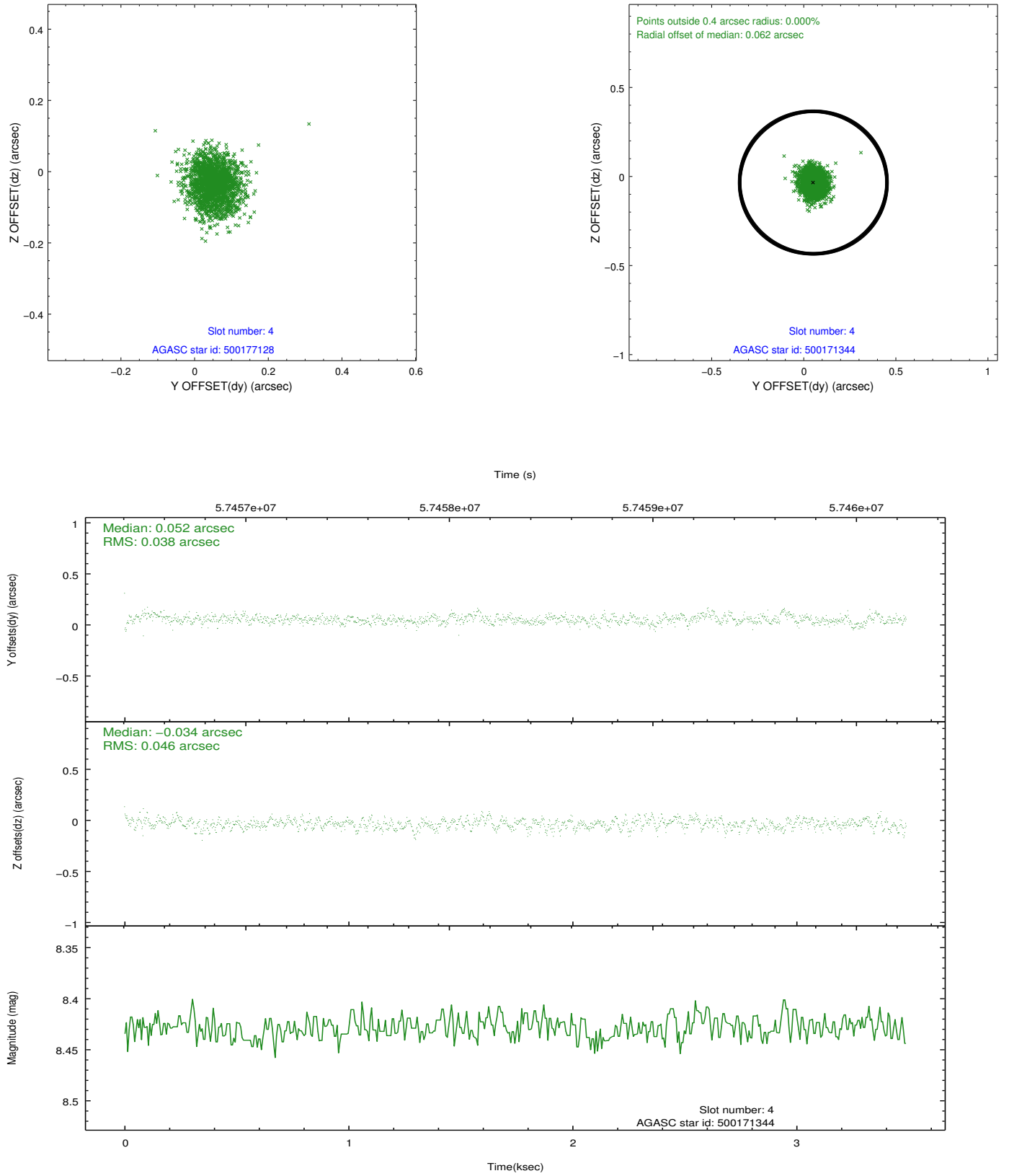
slot	status	id	mag	n_pts	med_dy	med_dz	dr1	dr2	ra	dec	mean_y	mean_z
0	FID	HRC-I-1	6.96	1703	0.005	-0.017	0.006	0.010	0.000000	0.000000	-755.32	-1288.11
1	FID	HRC-I-3	7.05	1703	0.058	-0.070	0.006	0.011	0.000000	0.000000	-1184.28	1015.63
2	FID	HRC-I-4	6.99	1703	0.051	-0.003	0.005	0.009	0.000000	0.000000	1286.74	1014.75
3	GUIDE	500177128	7.84	1703	-0.030	0.022	0.055	0.090	158.210933	53.586826	569.76	-103.60
4	GUIDE	500171344	8.43	1700	0.052	-0.034	0.063	0.100	158.404020	53.216809	-237.03	-1241.49
5	GUIDE	500182496	8.89	1702	0.067	0.119	0.089	0.137	158.371279	52.722772	-1693.05	-2266.66
6	GUIDE	500171880	9.65	1702	-0.090	0.029	0.094	0.151	158.701962	53.717455	1579.45	-650.12
7	GUIDE	500180056	9.68	1702	-0.002	-0.138	0.101	0.167	157.587703	53.702330	101.54	1207.98

2.4 Star Slots

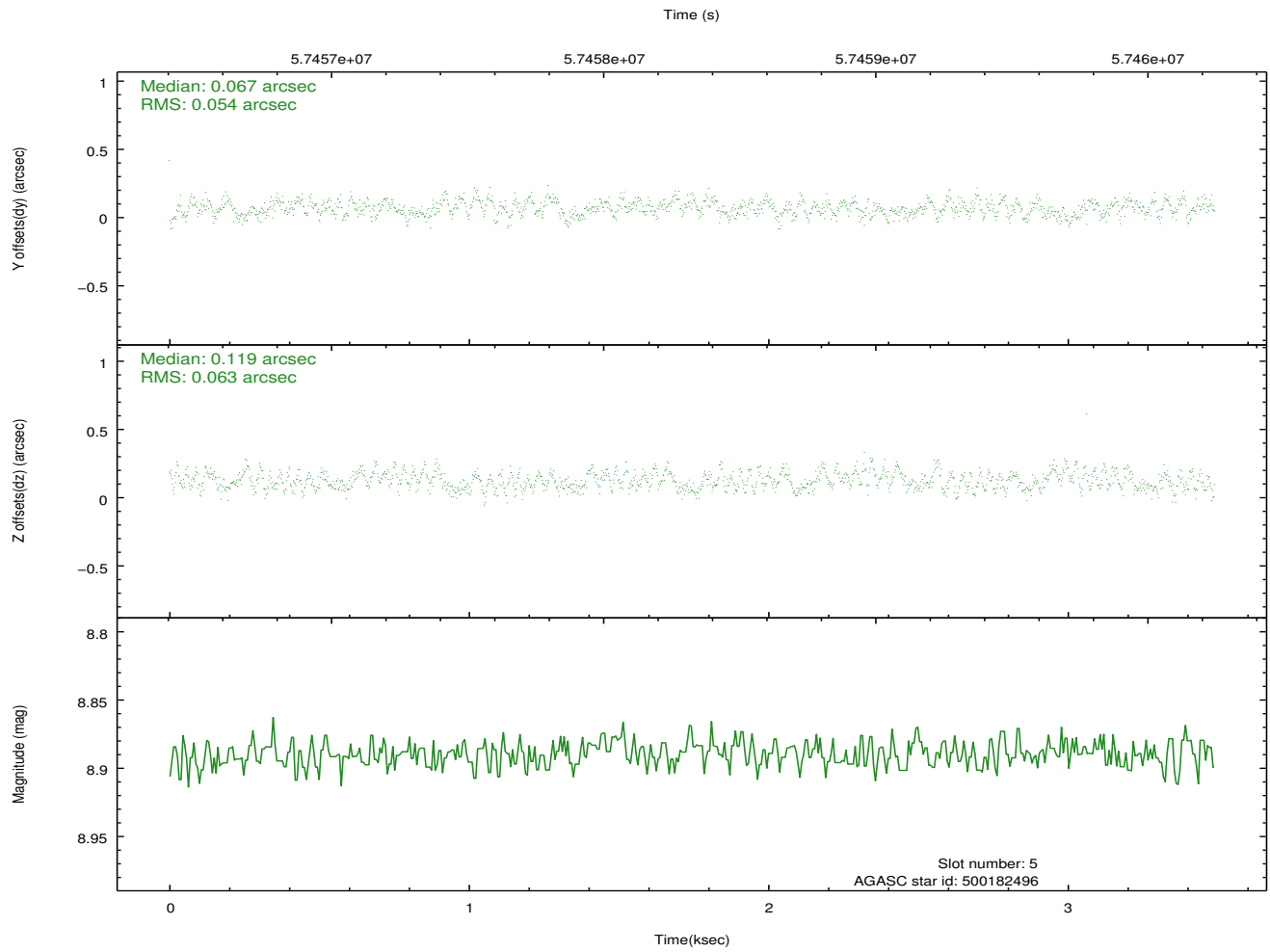
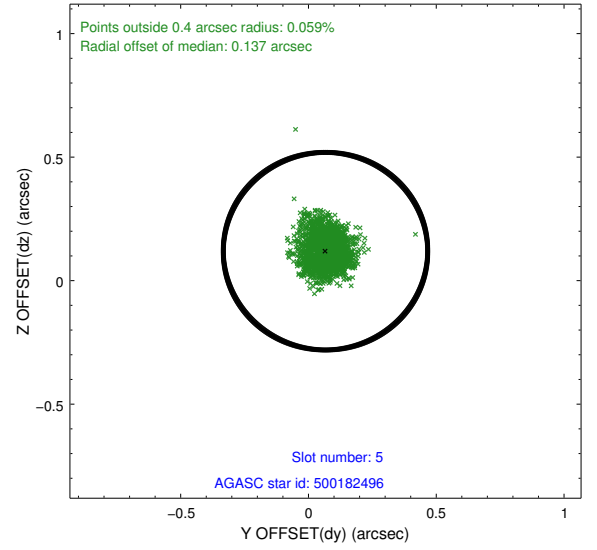
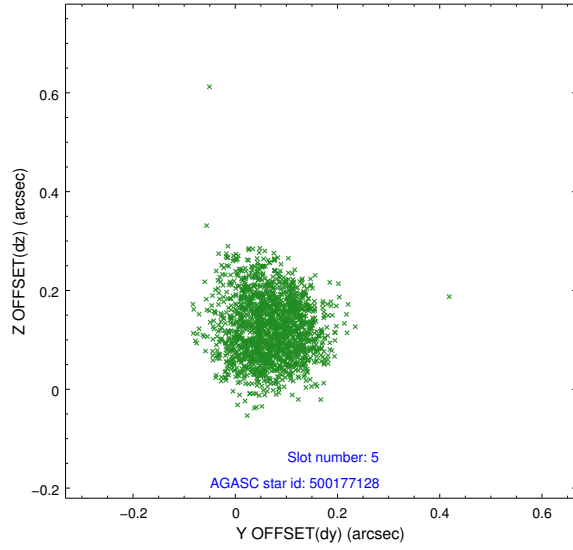
2.4.1 Slot 3



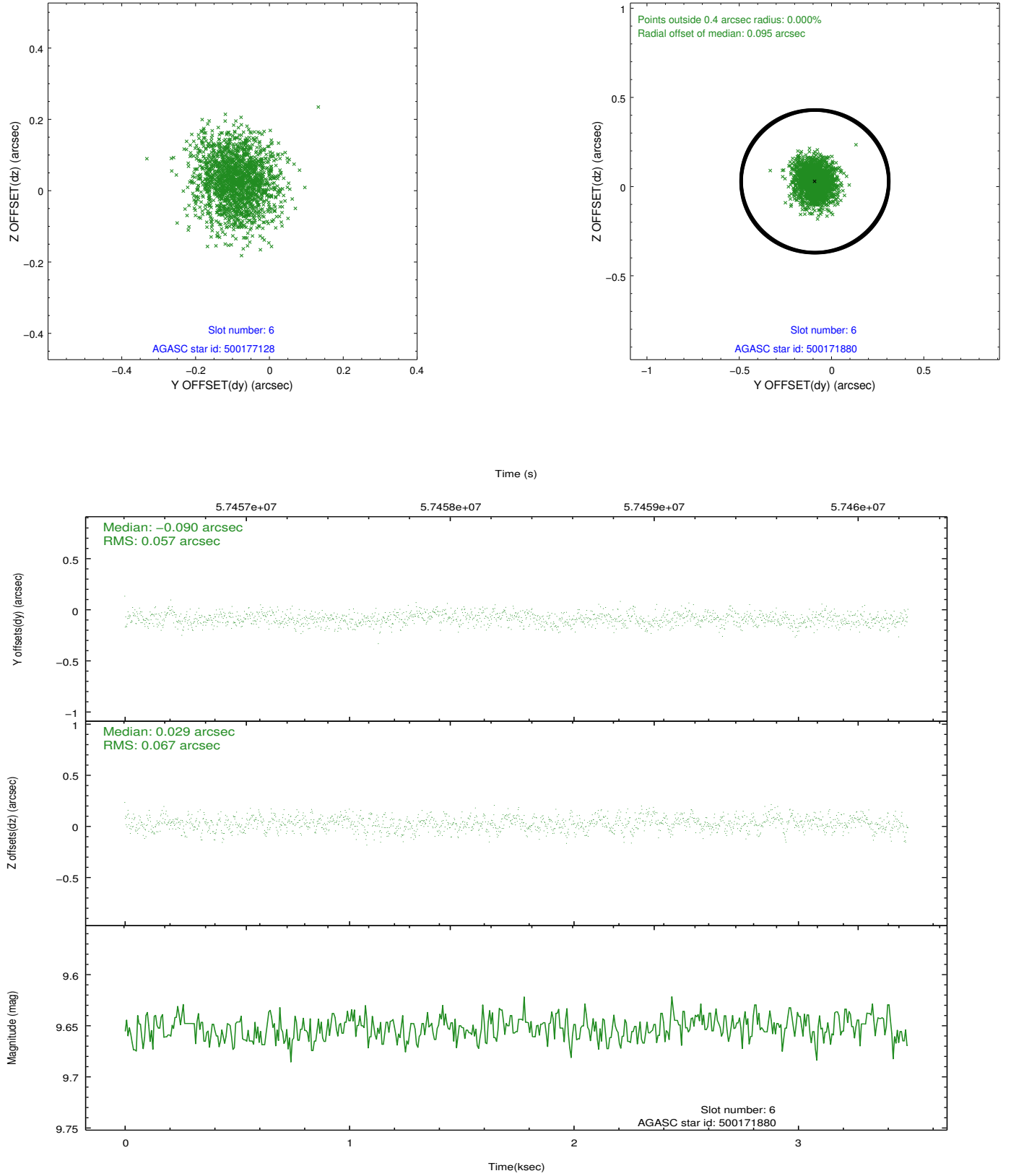
2.4.2 Slot 4



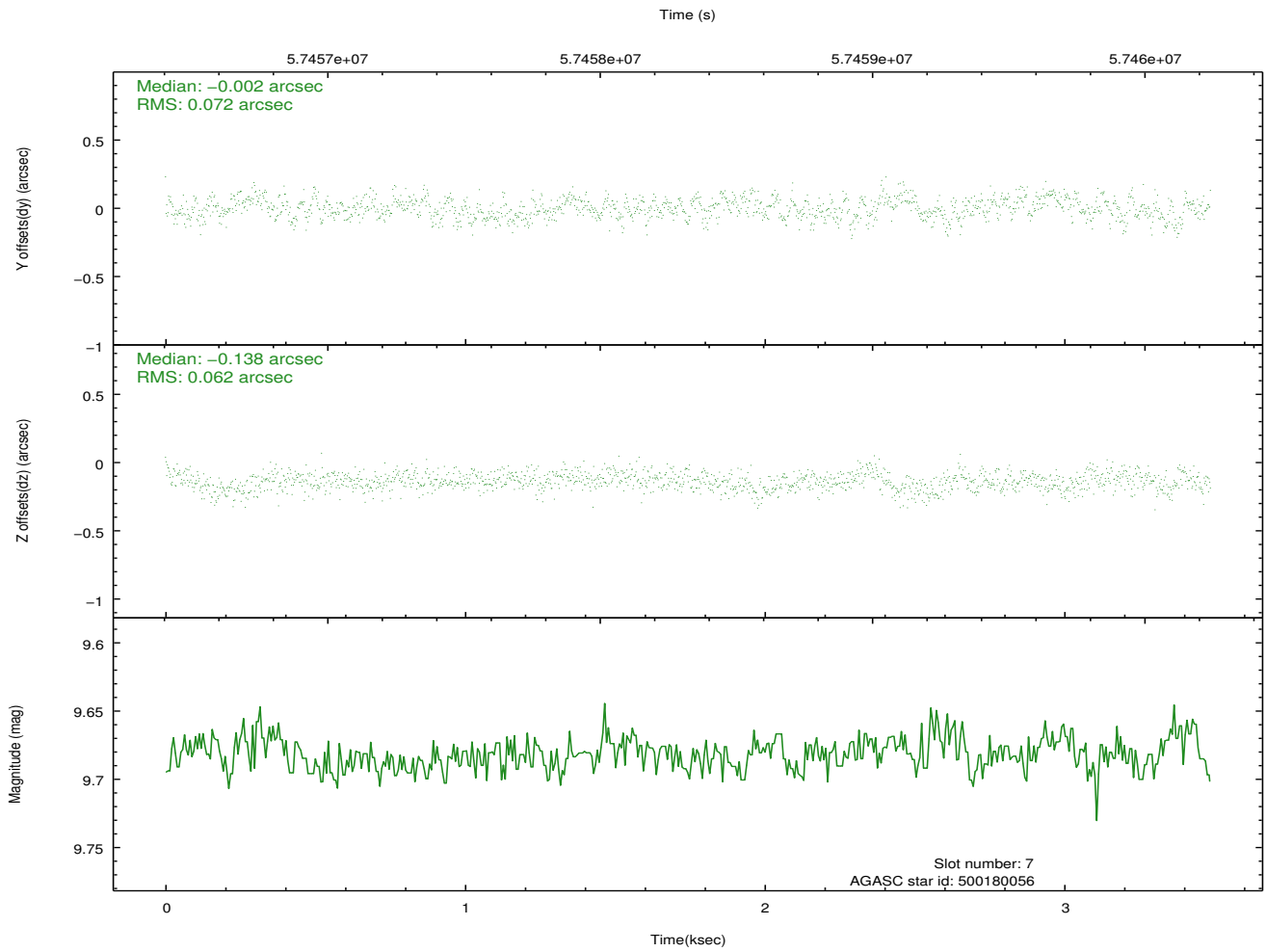
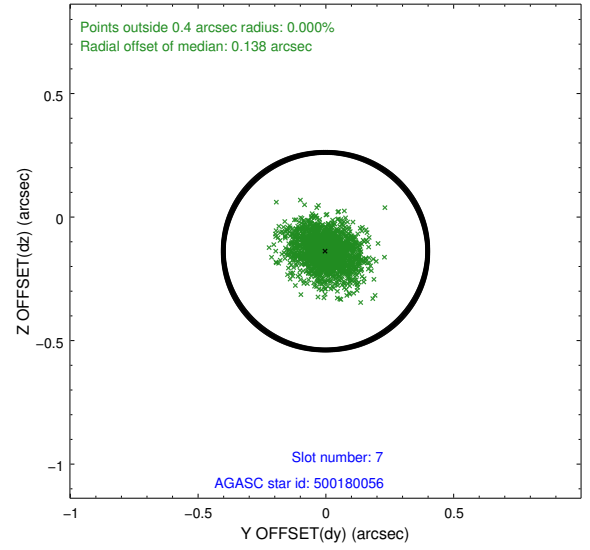
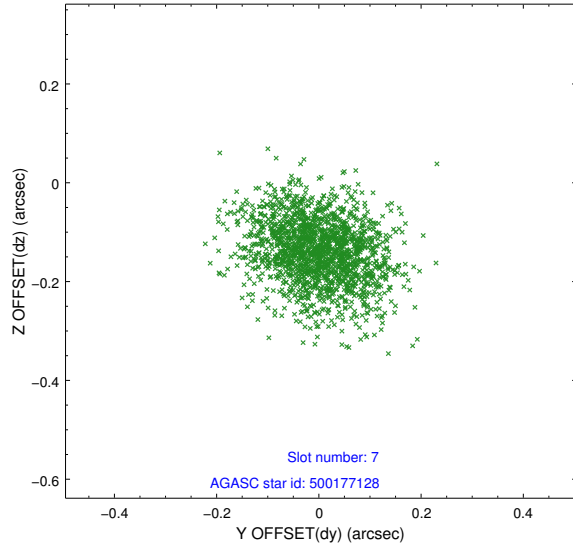
2.4.3 Slot 5



2.4.4 Slot 6

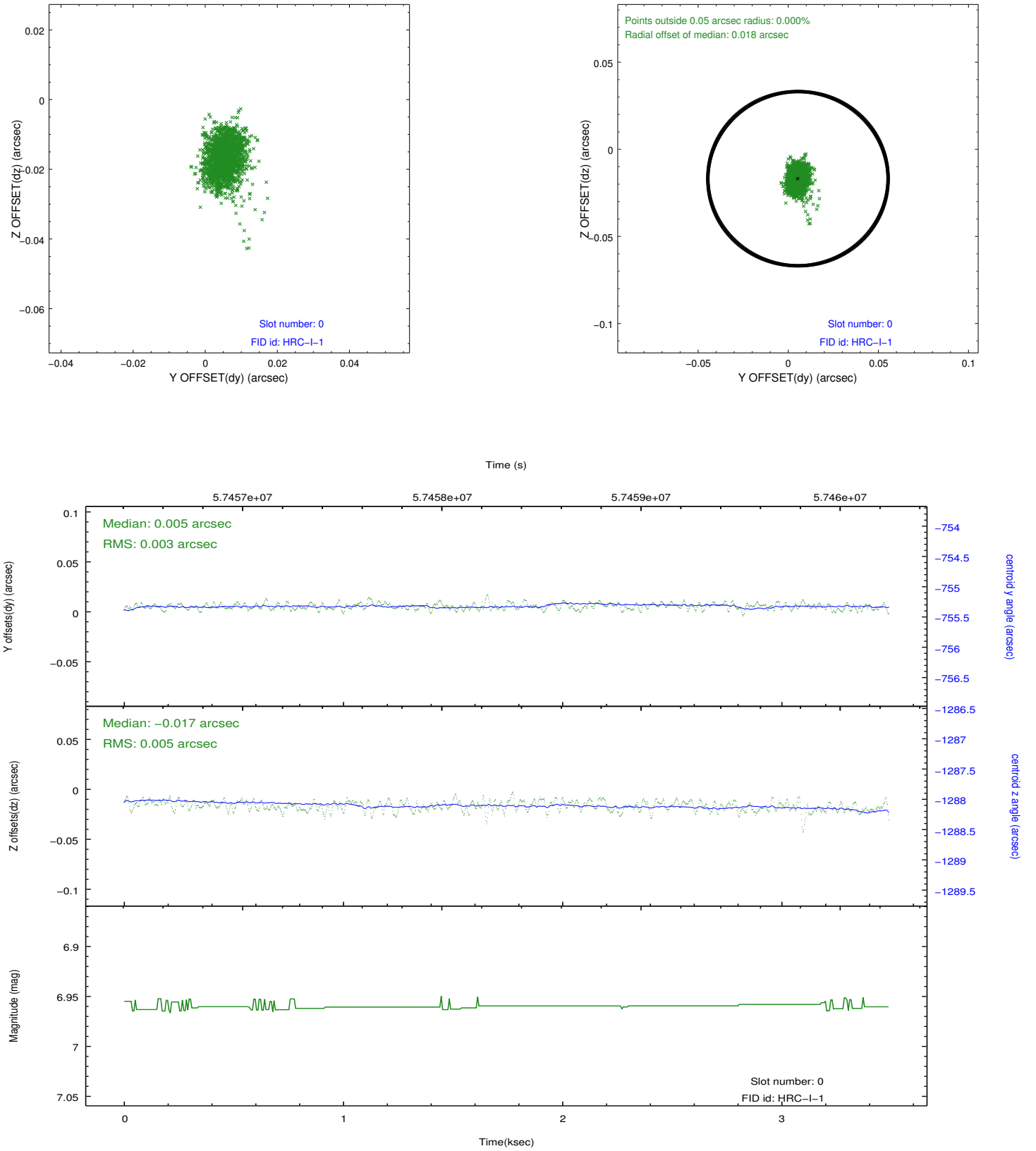


2.4.5 Slot 7

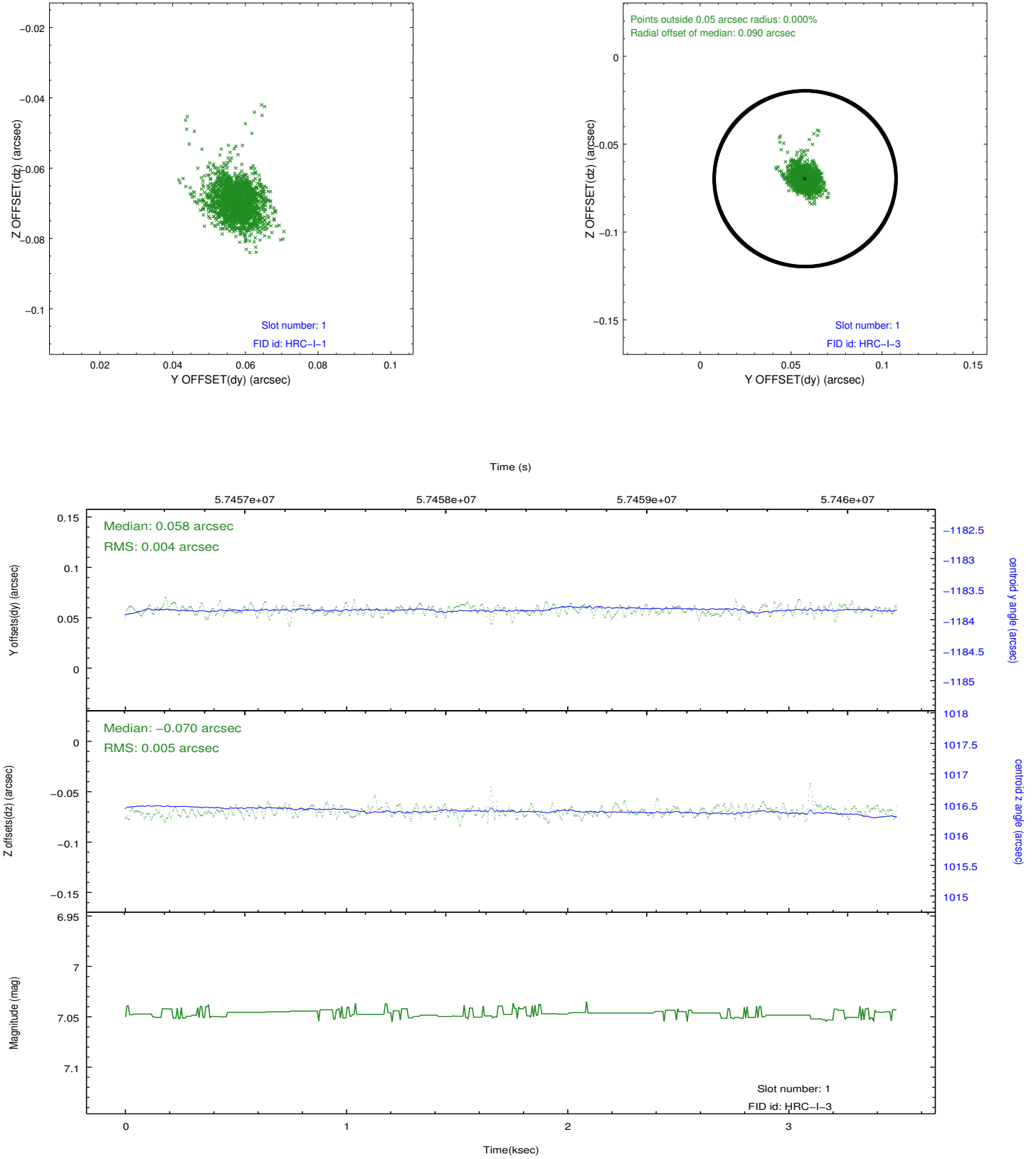


2.5 FID Slots

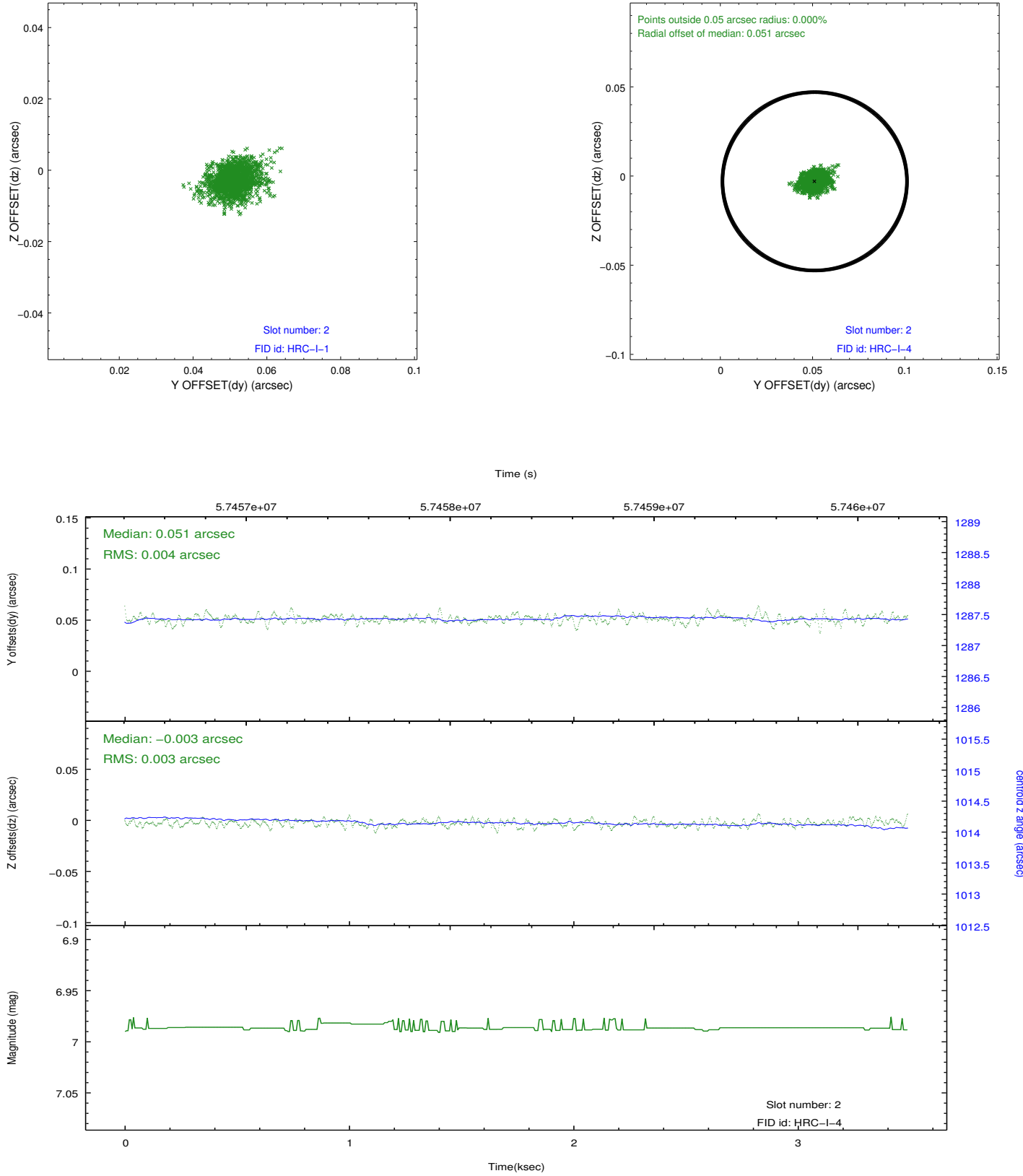
2.5.1 Slot 0



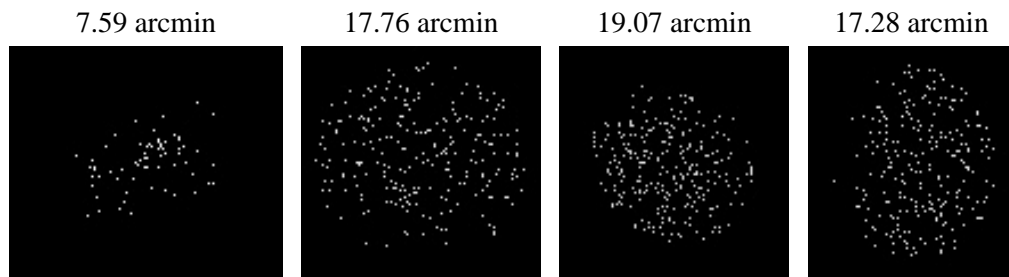
2.5.2 Slot 1



2.5.3 Slot 2



3 Point Sources



A Summary

A.1 Status

V&V Scientist	Beth Sundheim
V&V Date (YYYY-MM-DD)	2009.11.23
V&V Edition	1
V&V Disposition and Status	OK
V&V Charge Time	3.274

A.2 Comments