

V&V Reference Report

L2 ASCDS Version : 8.1.1

Observation 1389 - L2 Version 4

Chandra X-Ray Center

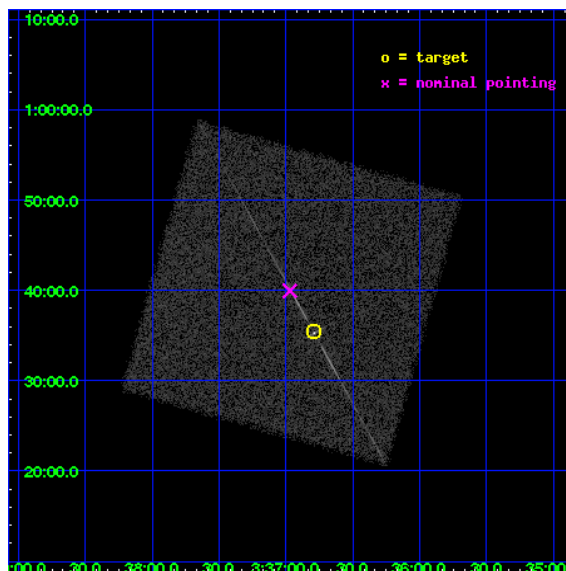
L2 Processing Date : Nov 20 2009

Contents

1	Front	2
2	OBI	3
2.1	OBI	3
2.1.1	Images	3
2.1.2	Parameters	4
2.1.3	Events	4
2.2	Compared Parameters	5
2.3	Aspect	6
2.4	Star Slots	9
2.4.1	Slot 3	9
2.4.2	Slot 4	10
2.4.3	Slot 5	11
2.4.4	Slot 6	12
2.5	FID Slots	13
2.5.1	Slot 0	13
2.5.2	Slot 1	14
2.5.3	Slot 2	15
3	Gratings	16
3.1	LETG Arm	16
A	Summary	18
A.1	Status	18
A.2	Comments	18

1 Front

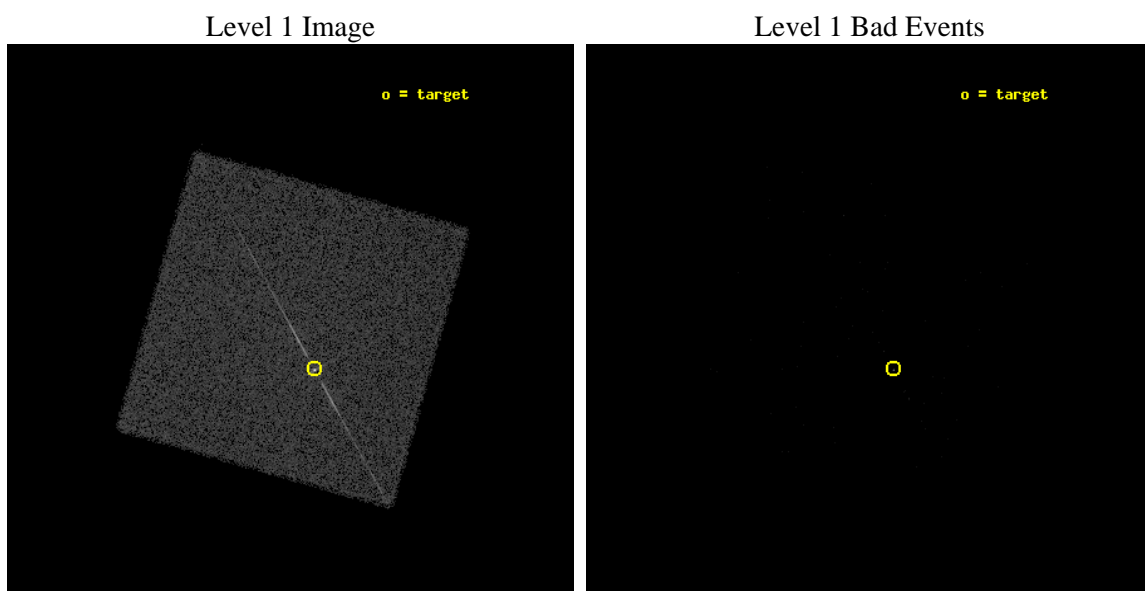
seq_num	280339	Sequence number
obs_id	1389	Observation id
title	 	Proposal title
observer	Dr. CXC Calibration	Principal investigator
object	HR1099	Source name
ra_targ	54.197083	Observer's specified target RA
dec_targ	0.589972	Observer's specified target Dec
ra_nom	54.242429741613	Nominal RA
dec_nom	0.66588262132678	Nominal Dec
roll_nom	60.803928487963	Nominal Roll
revision	4	Processing version of data
ontime	2275.7563320845	[s]
livetime	2261.0525705286	Ontime multiplied by DTCOR
l2events	72325	Number of level 2 events



2 OBI

2.1 OBI

2.1.1 Images



2.1.2 Parameters

obi_num	0	Obi number	sched_exp_time	2000.000000	Scheduled observation exposure time
ascdsver	8.1.1	Processing system revision	ontime	2275.7563320845	[s]
caldbver	4.1.4	 	l1events	111802	Number of level 1 events
date	2009-11-20T16:25:00	Date and time of file creation			
revision	4	Processing version of data			

2.1.3 Events

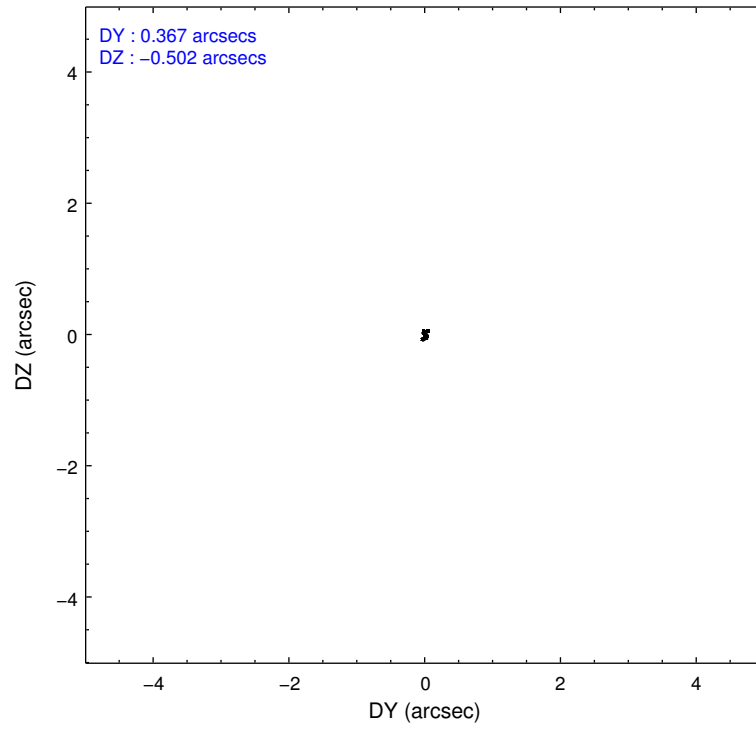
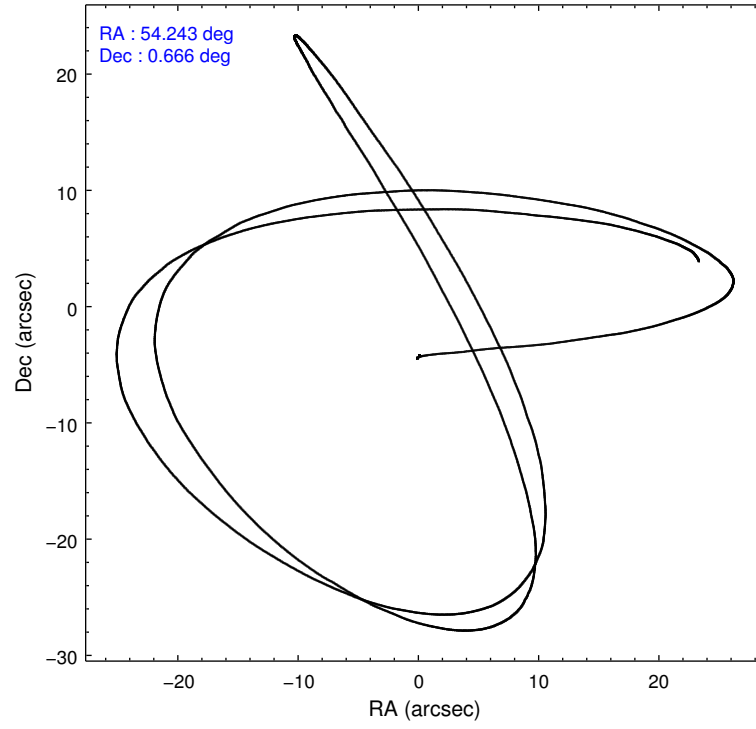
Level 1 Events

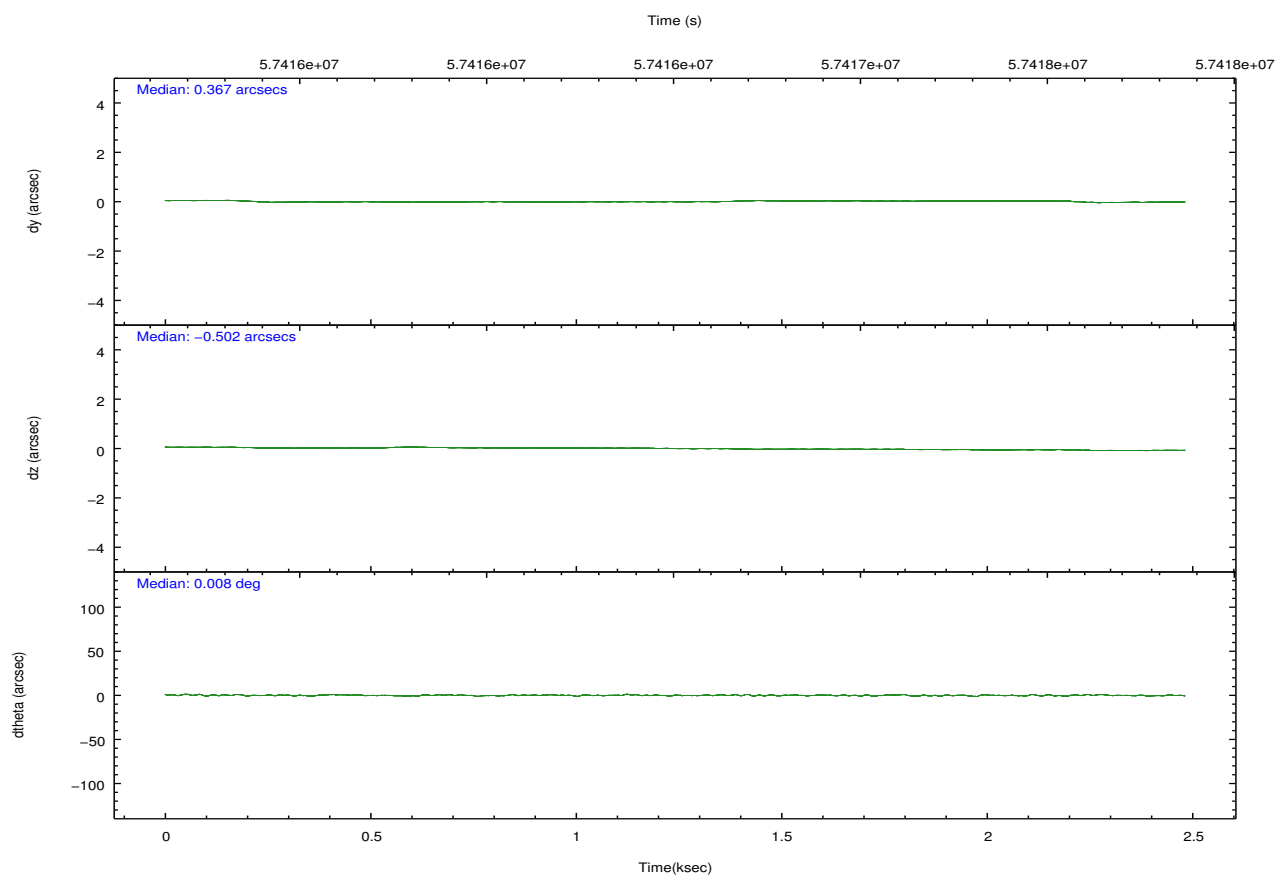
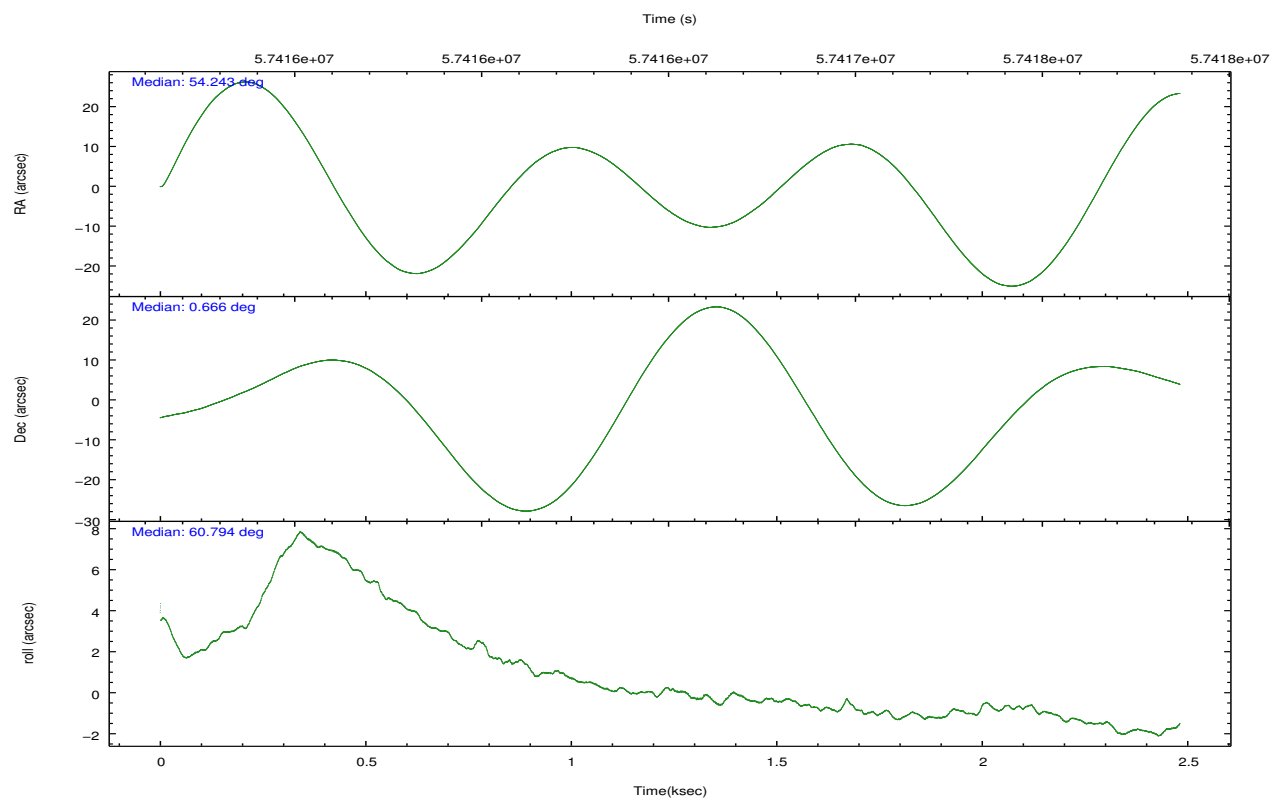
	segment 0
level 1 events	111802
rejected events	2485
rejected %	2%

2.2 Compared Parameters

Parameter	Planned	Actual	Parameter	Planned	Actual
Instrument	HRC	HRC	Obspar format version number	6	6
Detector	HRC-I	HRC-I	Obspar file type	PREDICTED	ACTUAL
Grating	LETG	LETG	Obspar update status	NONE	UPDATED
Data mode	OBSERVING	OBSERVING			
Observation mode	POINTING	POINTING			
Pointing RA	54.241902	54.24242974161349			
Pointing Dec	0.638278	0.6658826213267782			
Pointing Roll	60.899304	60.80392848796258			
SIM focus pos (mm)	-1.040293	-1.038866356238299			
SIM defocus (mm)	0	0.001426264420575141			
SIM translation stage pos (mm)	126.985494	126.9854943052878			
SIM translation stage offset (mm)	0	-5.413686238853188e-06			
Observation start time	57415745.184000	57415079.593325			
Observation start date	1999-10-27T12:48:01	1999-10-27T12:37:59			
Observation end time	57417745.184000	57417879.893426			
Observation end date	1999-10-27T13:21:21	1999-10-27T13:24:39			

2.3 Aspect



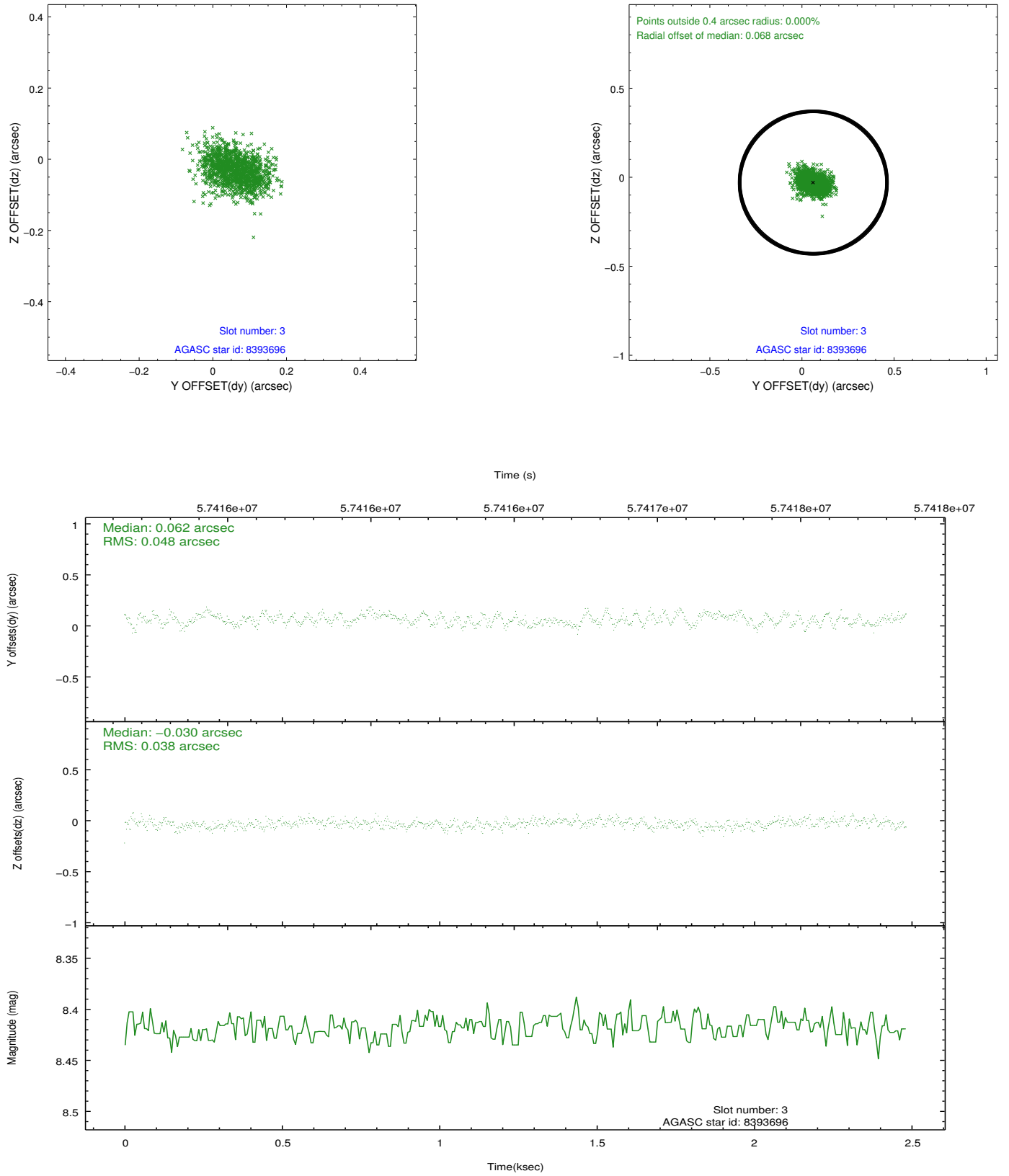


Slot Statistics

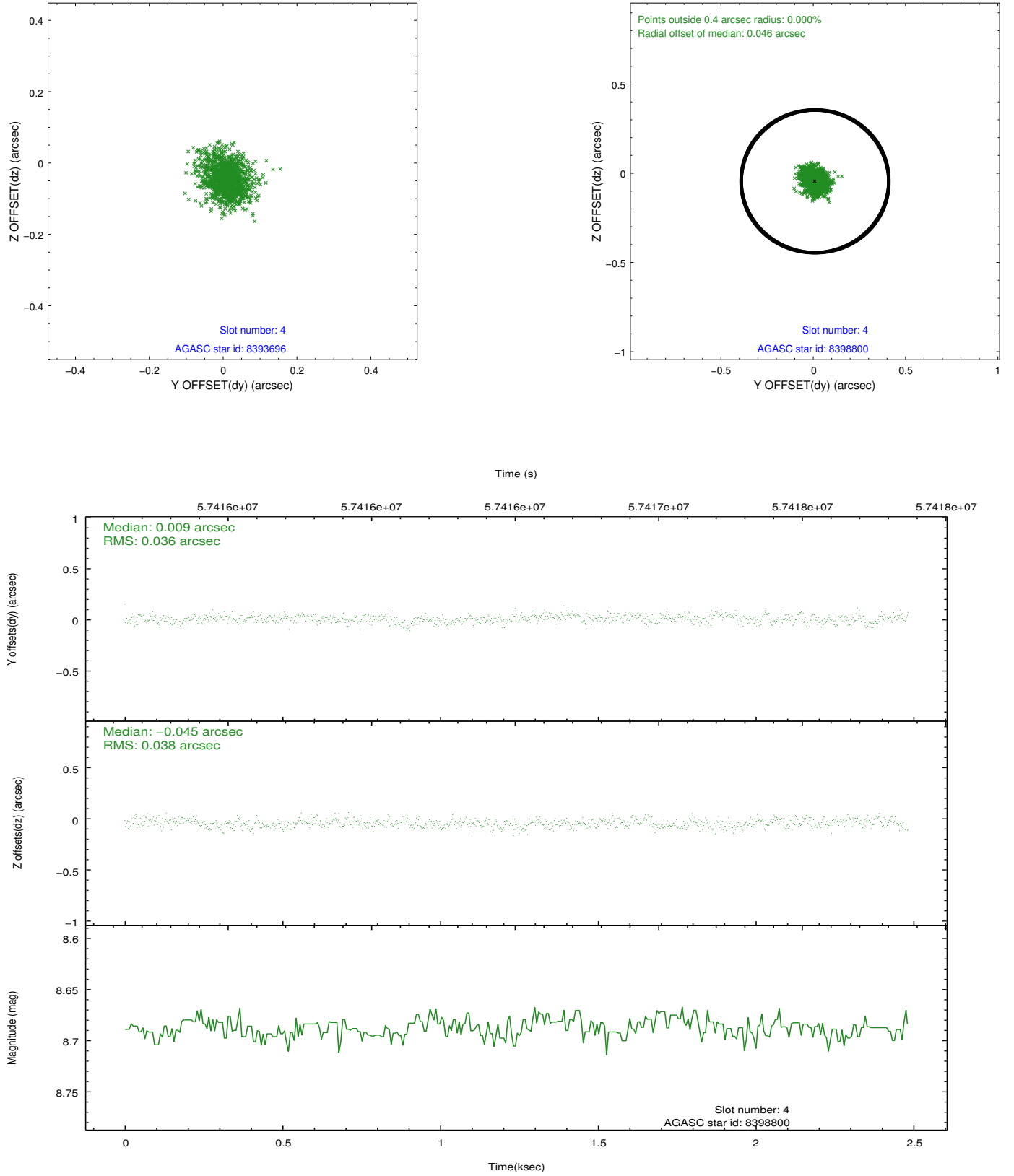
slot	status	id	mag	n_pts	med_dy	med_dz	dr1	dr2	ra	dec	mean_y	mean_z
0	FID	HRC-I-1	6.95	1212	0.031	0.014	0.007	0.011	0.000000	0.000000	-755.73	-1287.17
1	FID	HRC-I-2	6.99	1212	0.053	-0.044	0.006	0.010	0.000000	0.000000	856.30	-1289.83
2	FID	HRC-I-3	7.03	1212	0.036	-0.059	0.006	0.012	0.000000	0.000000	-1183.54	1016.25
3	GUIDE	8393696	8.42	1212	0.062	-0.030	0.066	0.104	53.645666	0.680479	-912.53	1953.02
4	GUIDE	8398800	8.69	1211	0.009	-0.045	0.056	0.093	54.242352	0.922024	891.24	500.99
5	GUIDE	8395104	8.66	1212	-0.036	0.118	0.065	0.106	54.744893	0.796520	1378.10	-1300.31
6	GUIDE	8399352	9.94	1208	-0.039	-0.037	0.108	0.168	53.946831	1.204693	1264.83	1922.63
7	UNUSED		0.00	0	0.000	0.000	0.000	0.000	0.000000	0.000000	0.00	0.00

2.4 Star Slots

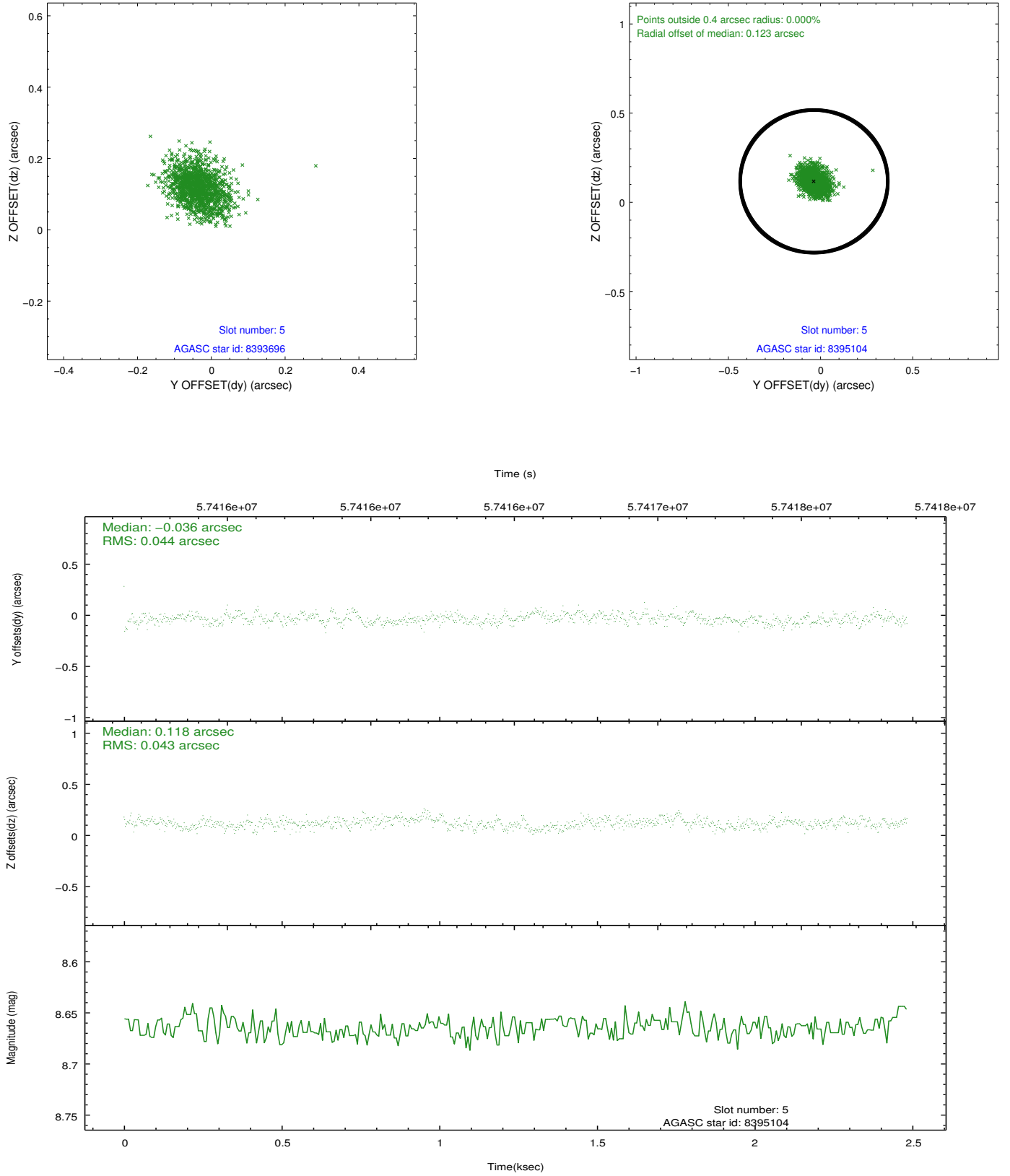
2.4.1 Slot 3



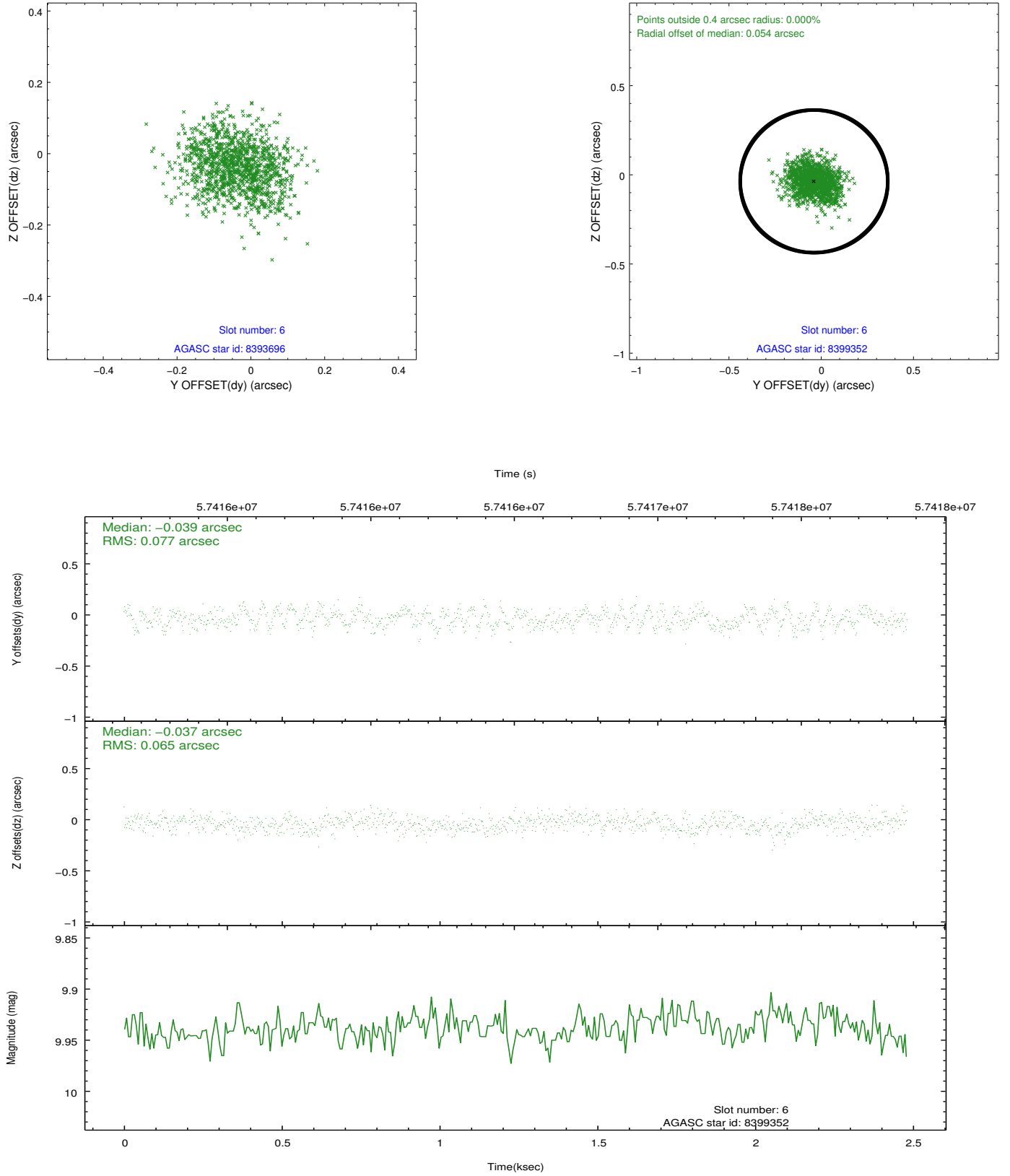
2.4.2 Slot 4



2.4.3 Slot 5

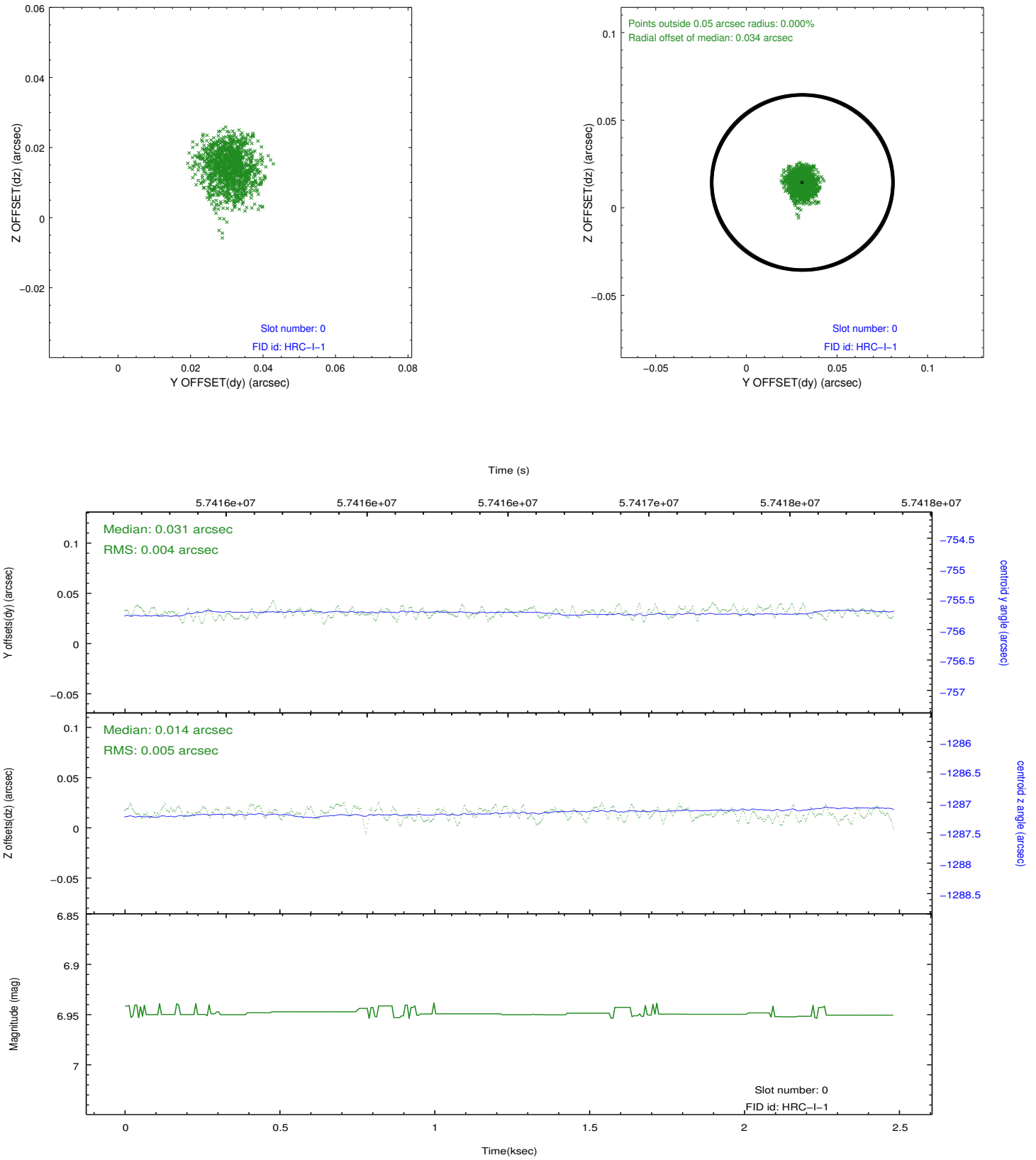


2.4.4 Slot 6

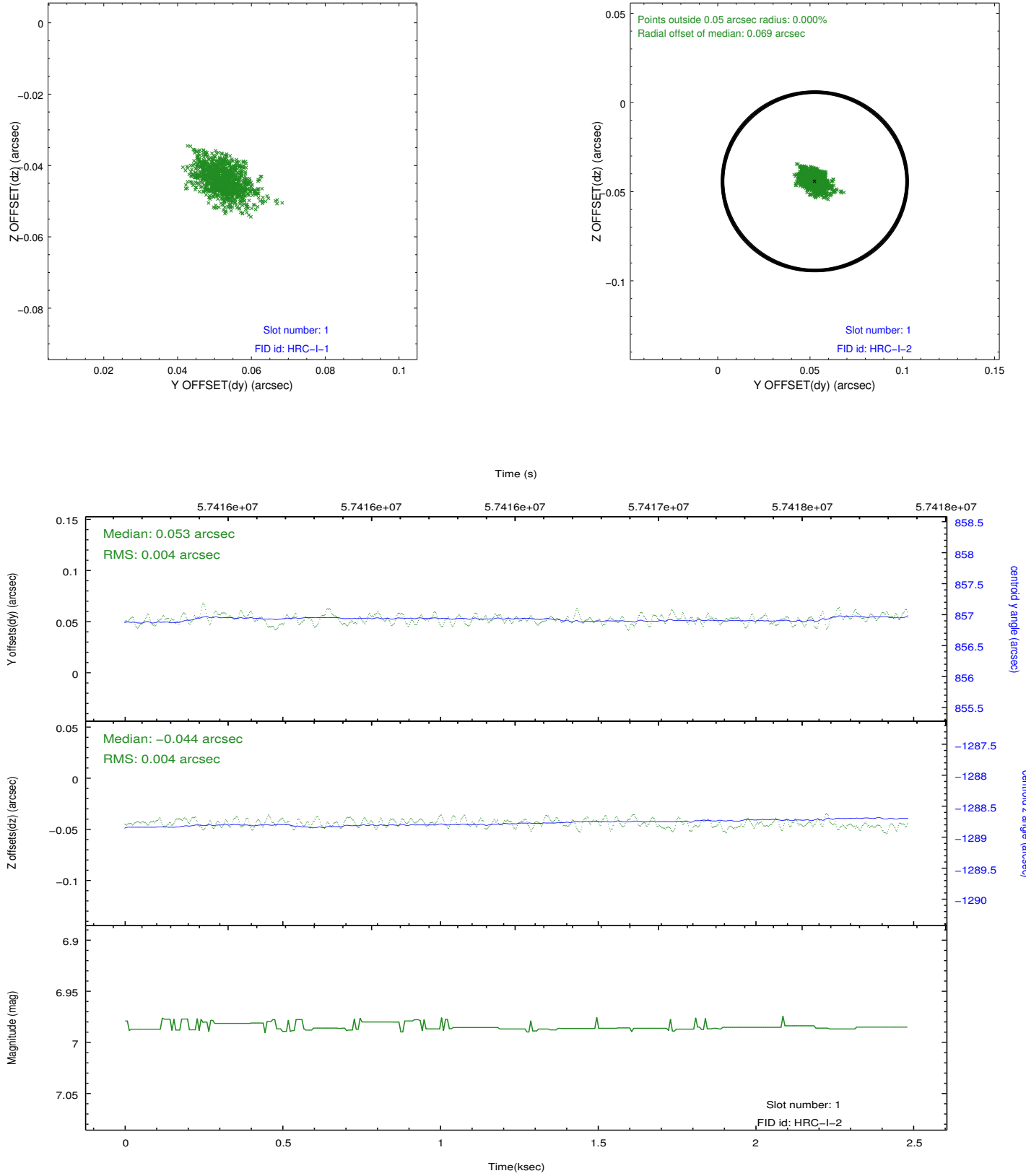


2.5 FID Slots

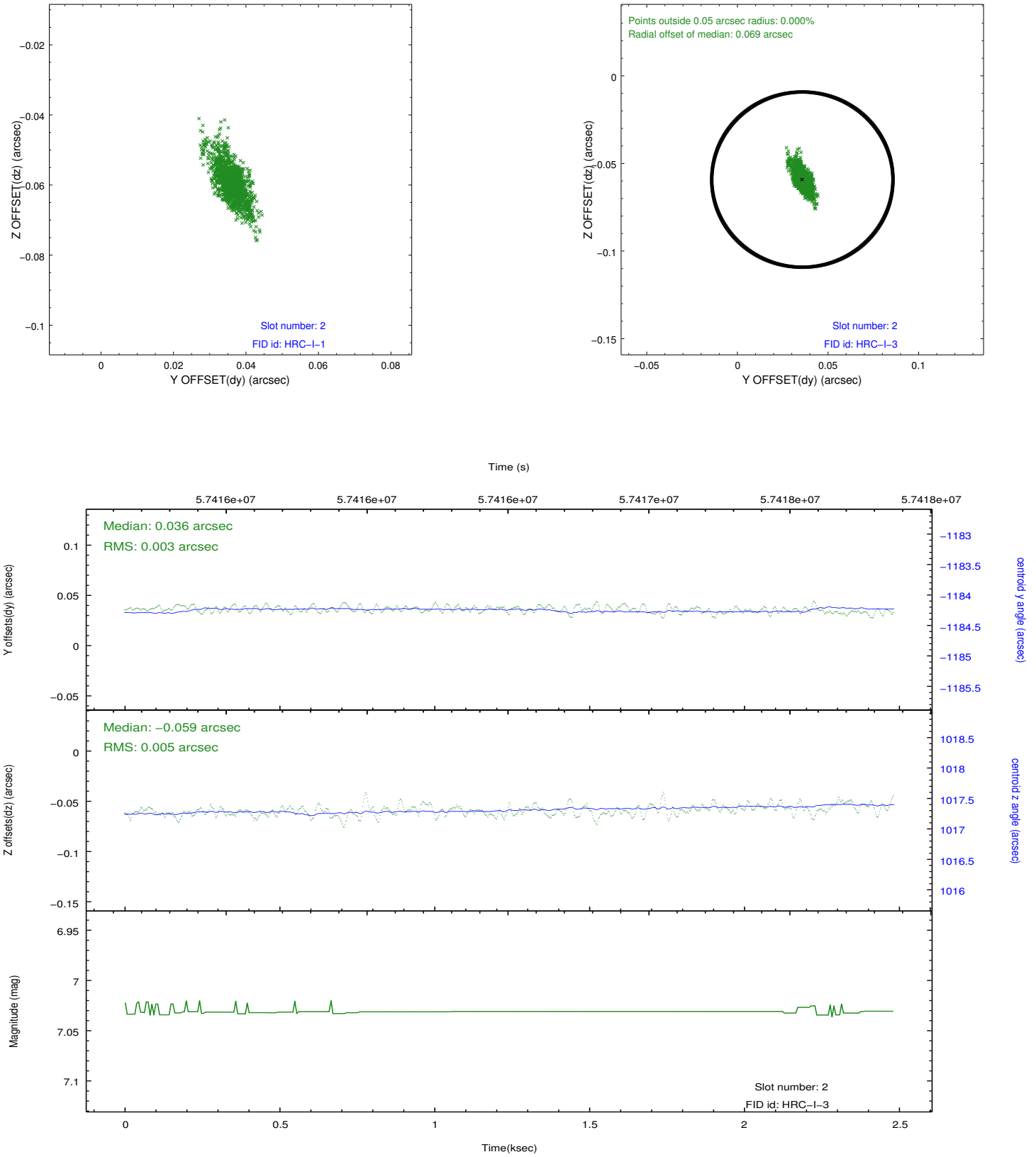
2.5.1 Slot 0



2.5.2 Slot 1

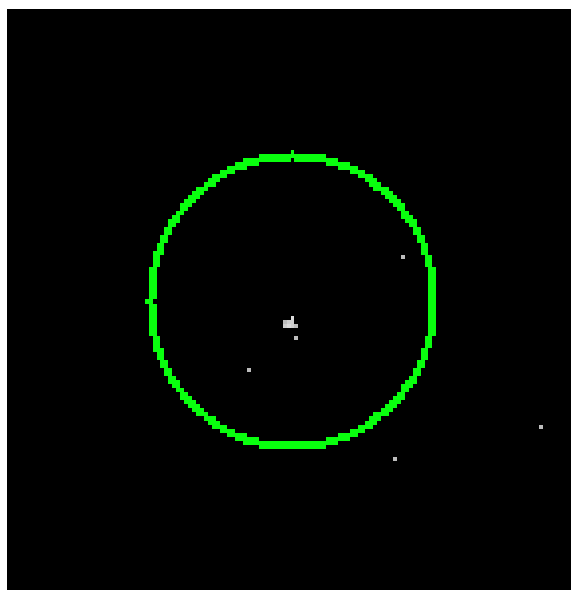


2.5.3 Slot 2

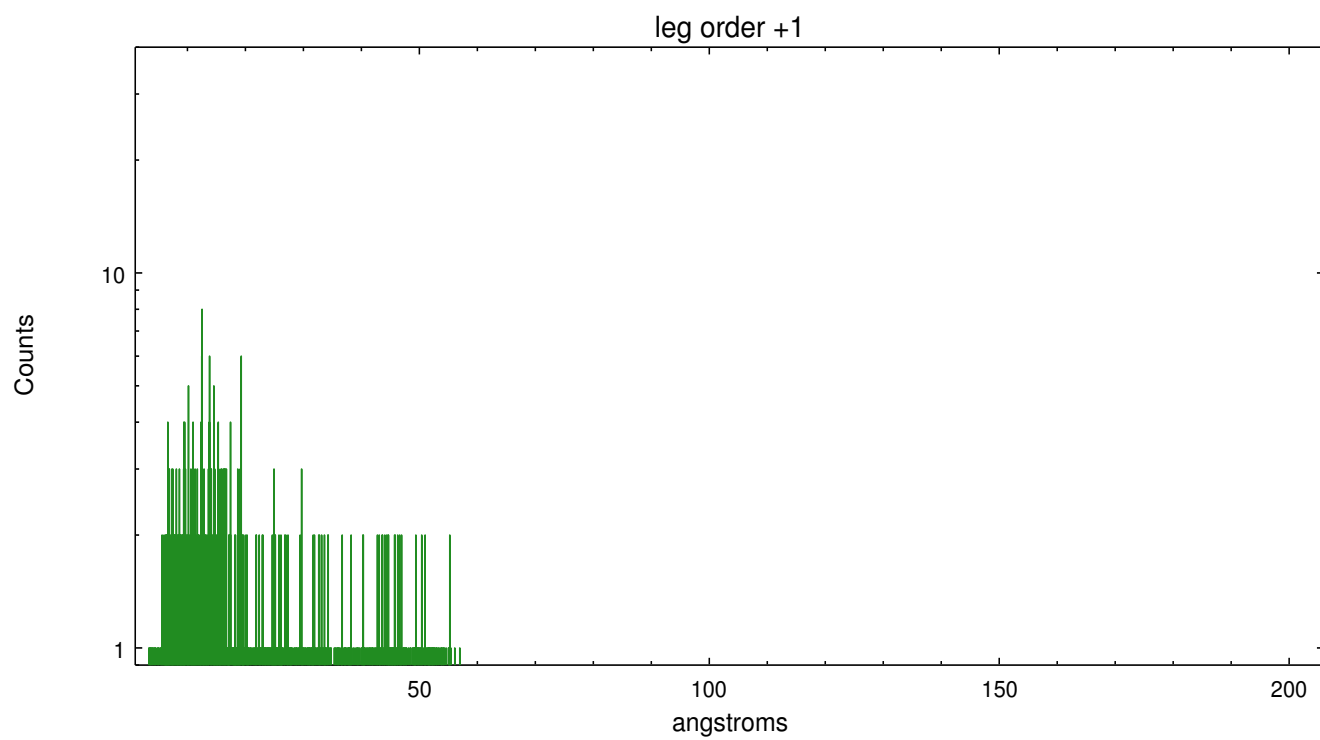
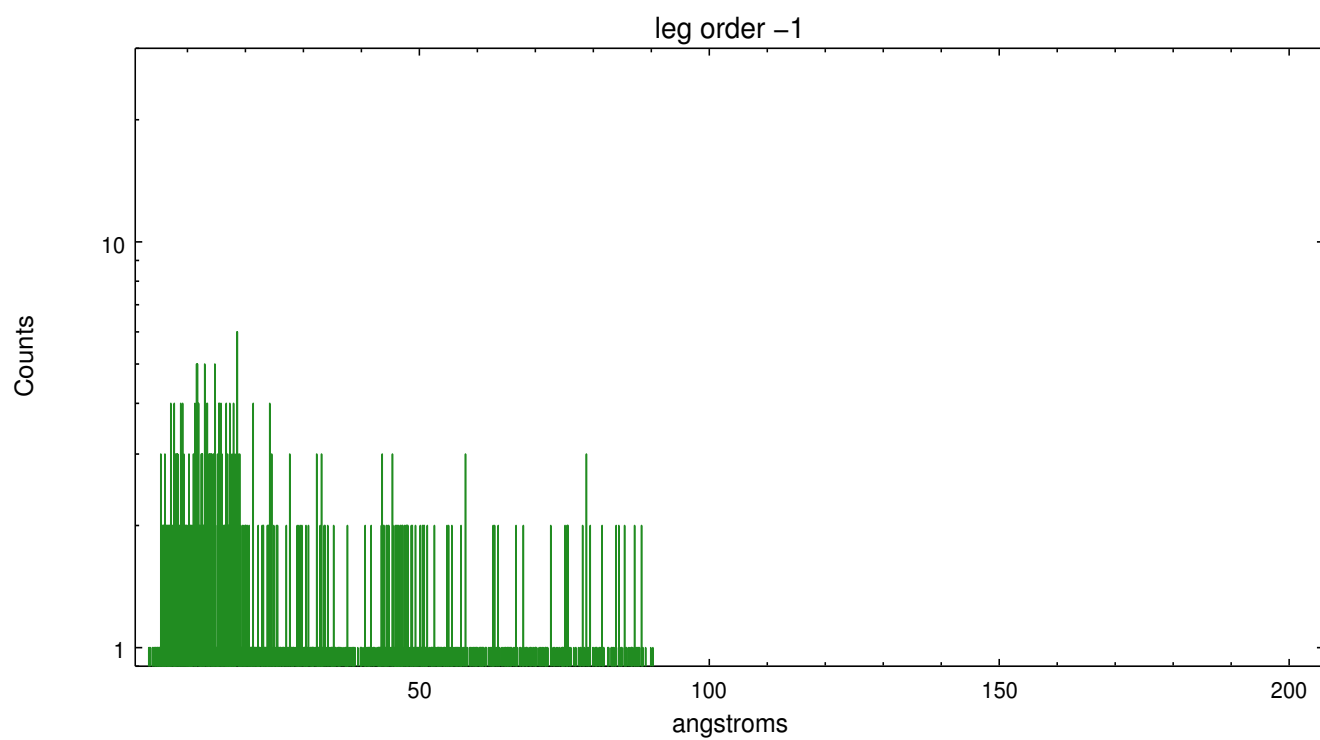


3 Gratings

3.1 LETG Arm



LETG Zero Order



A Summary

A.1 Status

V&V Scientist	Joy Nichols
V&V Date (YYYY-MM-DD)	2010.04.28
V&V Edition	1
V&V Disposition and Status	OK
V&V Charge Time	2.273

A.2 Comments

HRC-I PSF tests. Target is off-axis.

===

Charge time for this ObsId remains at original value of 2.273 ks,
although
with the current processing the charge time would have been 2.276 ksec.

===

The guide star in slot 7 was removed from the aspect solution due to
poor data quality. The aspect solution is not expected to be degraded
by
removing one guide star from the solution.