

# V&V Reference Report

## L2 ASCDS Version : 8.2.1

Observation 1292 - L2 Version 3

Chandra X-Ray Center

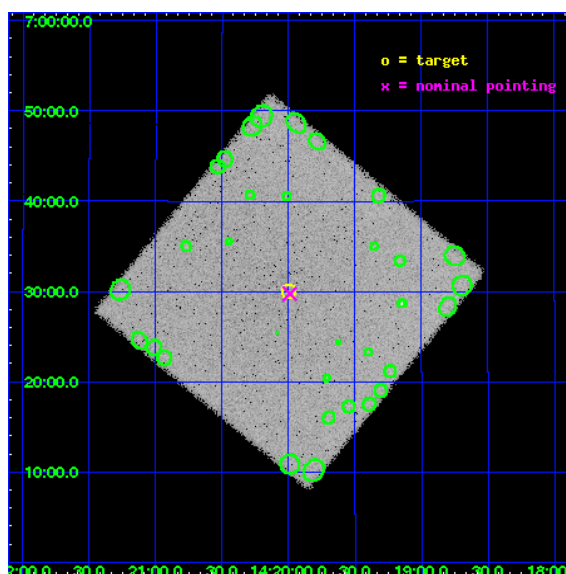
L2 Processing Date : Jan 12 2010

## Contents

<b>1</b>	<b>Front</b>	<b>2</b>
<b>2</b>	<b>OBI</b>	<b>3</b>
2.1	OBI . . . . .	3
2.1.1	Images . . . . .	3
2.1.2	Parameters . . . . .	4
2.1.3	Events . . . . .	4
2.2	Compared Parameters . . . . .	5
2.3	Aspect . . . . .	6
2.4	Star Slots . . . . .	9
2.4.1	Slot 3 . . . . .	9
2.4.2	Slot 4 . . . . .	10
2.4.3	Slot 5 . . . . .	11
2.4.4	Slot 6 . . . . .	12
2.4.5	Slot 7 . . . . .	13
2.5	FID Slots . . . . .	14
2.5.1	Slot 0 . . . . .	14
2.5.2	Slot 1 . . . . .	15
2.5.3	Slot 2 . . . . .	16
<b>3</b>	<b>Point Sources</b>	<b>17</b>
<b>A</b>	<b>Summary</b>	<b>18</b>
A.1	Status . . . . .	18
A.2	Comments . . . . .	18

# 1 Front

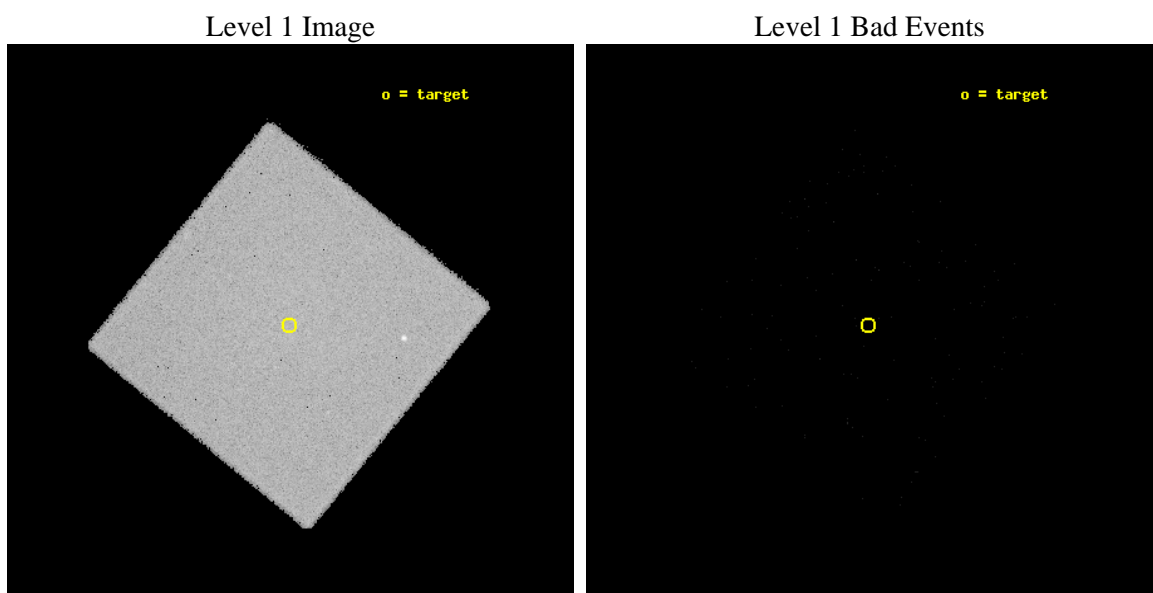
seq_num	980242	Sequence number
obs_id	1292	Observation id
title	&#160	Proposal title
observer	Dr. CXC Calibration	Principal investigator
object	MOSAIC BKGD 3	Source name
ra_targ	215.0	Observer's specified target RA
dec_targ	6.5	Observer's specified target Dec
ra_nom	214.99753974279	Nominal RA
dec_nom	6.4956413458818	Nominal Dec
roll_nom	264.42223072138	Nominal Roll
revision	3	Processing version of data
ontime	7796.406530045	[s]
livetime	7738.1230536025	Ontime multiplied by DTCOR
l2events	244888	Number of level 2 events



## 2 OBI

### 2.1 OBI

#### 2.1.1 Images



### 2.1.2 Parameters

obi_num	0	Obi number	sched_exp_time	8000.000000	Scheduled observation exposure time
ascdsver	8.2.1	Processing system revision	ontime	7796.406530045	[s]
caldbver	4.1.5	&#160	l1events	422577	Number of level 1 events
date	2010-01-12T17:54:38	Date and time of file creation			
revision	3	Processing version of data			

### 2.1.3 Events

#### Level 1 Events

	<b>segment 0</b>
level 1 events	422577
rejected events	3574
rejected %	0%

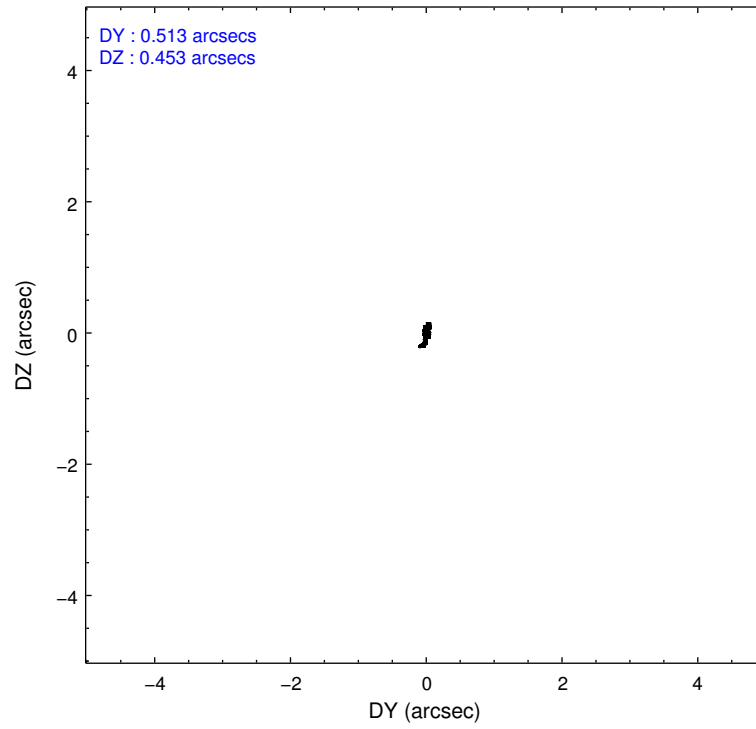
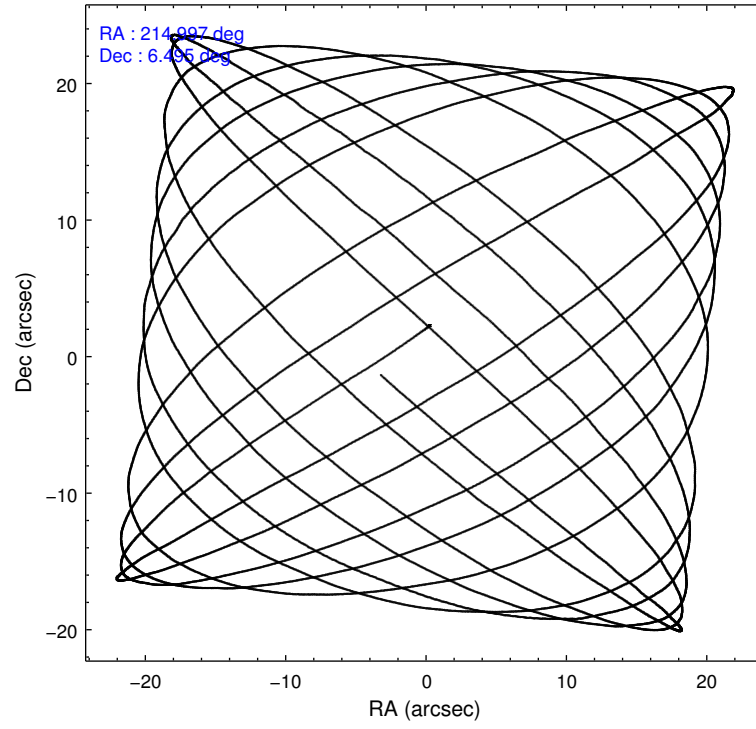


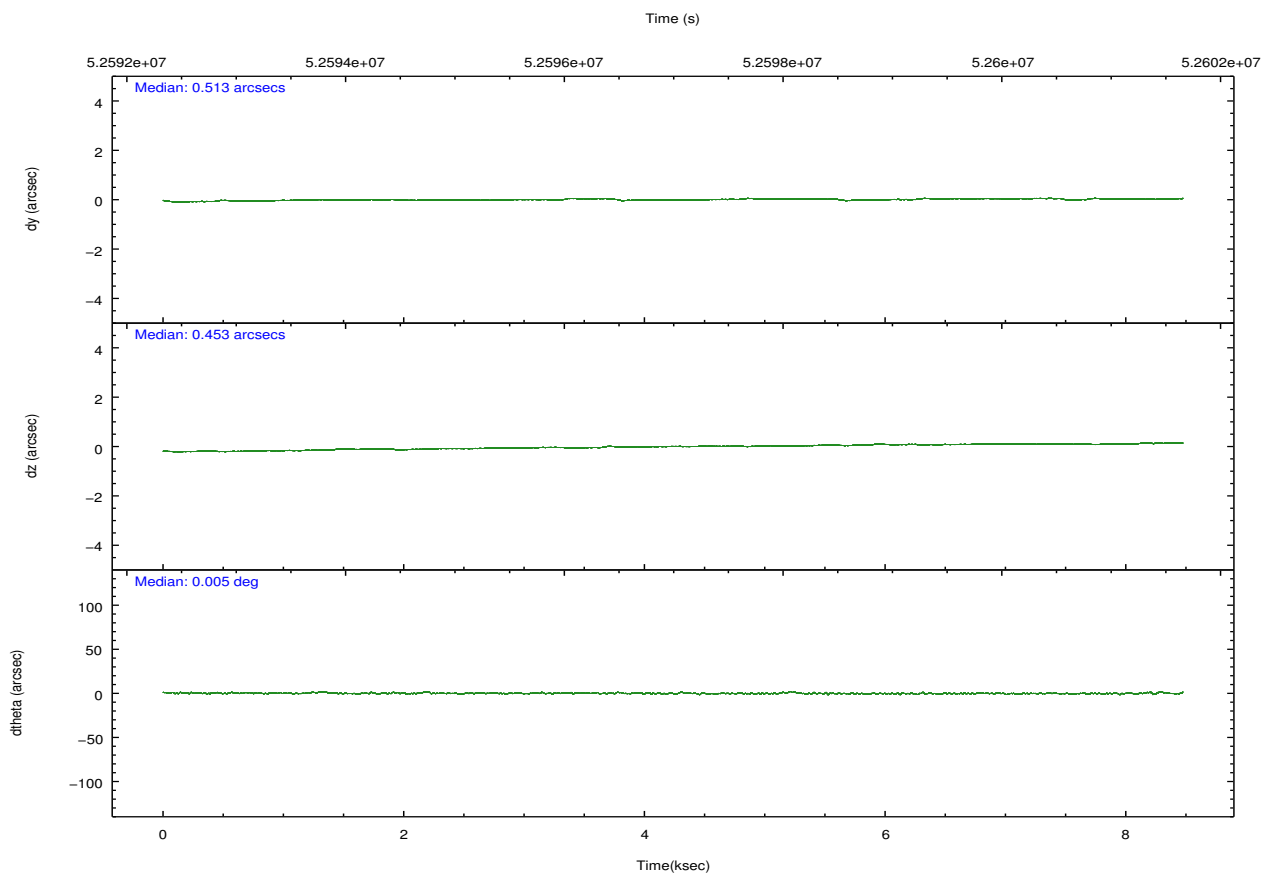
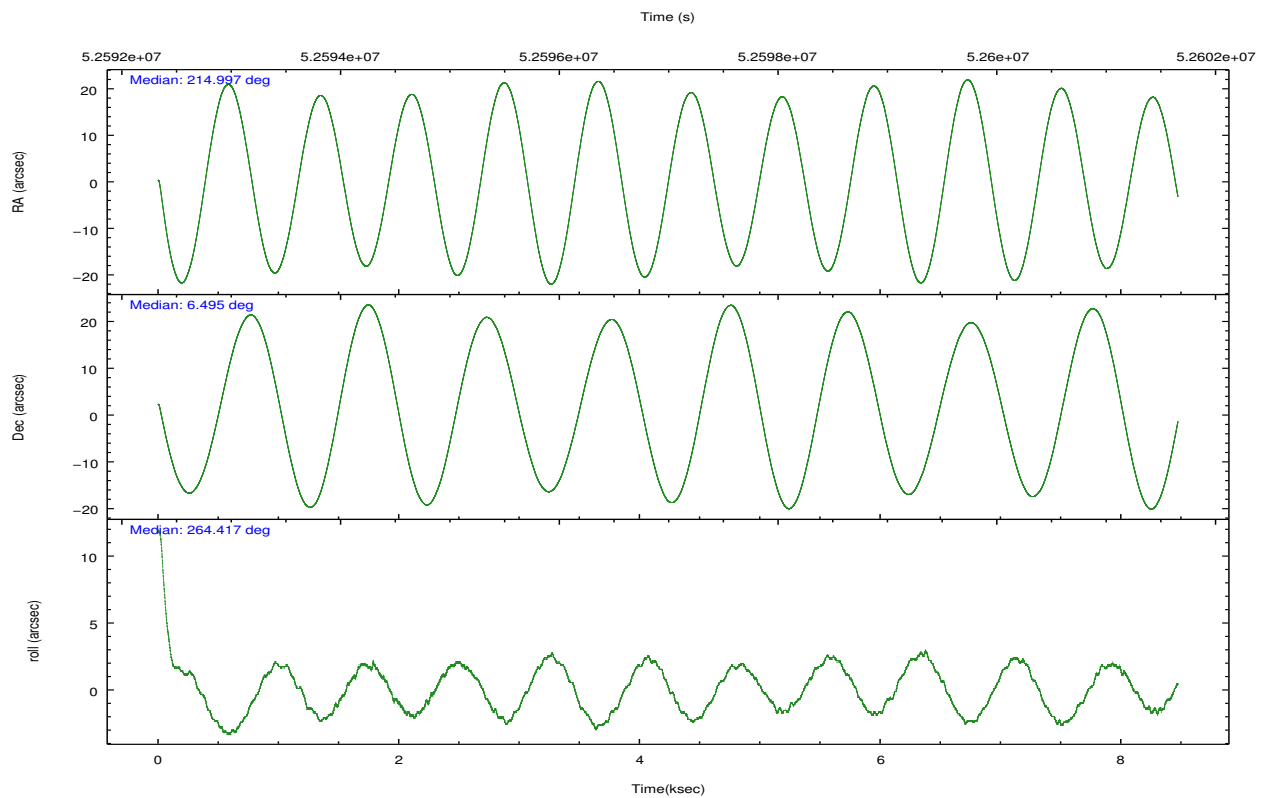
## 2.2 Compared Parameters

Parameter	Planned	Actual
Instrument	HRC	HRC
Detector	HRC-I	HRC-I
Grating	NONE	NONE
Data mode	OBSERVING	OBSERVING
Observation mode	POINTING	POINTING
Pointing RA	214.986159	214.9975397427858
Pointing Dec	6.520735	6.495641345881765
Pointing Roll	264.519012	264.4222307213775
SIM focus pos (mm)	-1.040293	-1.300001029371461
SIM defocus (mm)	0	-0.259708408712586
SIM translation stage pos (mm)	126.985494	126.9829799899862
SIM translation stage offset (mm)	0	0.002508901615314585
Observation start time	52593231.184000	52592564.602032
Observation start date	1999-09-01T17:12:47	1999-09-01T17:02:44
Observation end time	52601231.184000	52601364.739848
Observation end date	1999-09-01T19:26:07	1999-09-01T19:29:24

Parameter	Planned	Actual
Obspar format version number	6	6
Obspar file type	PREDICTED	ACTUAL
Obspar update status	NONE	UPDATED

## 2.3 Aspect



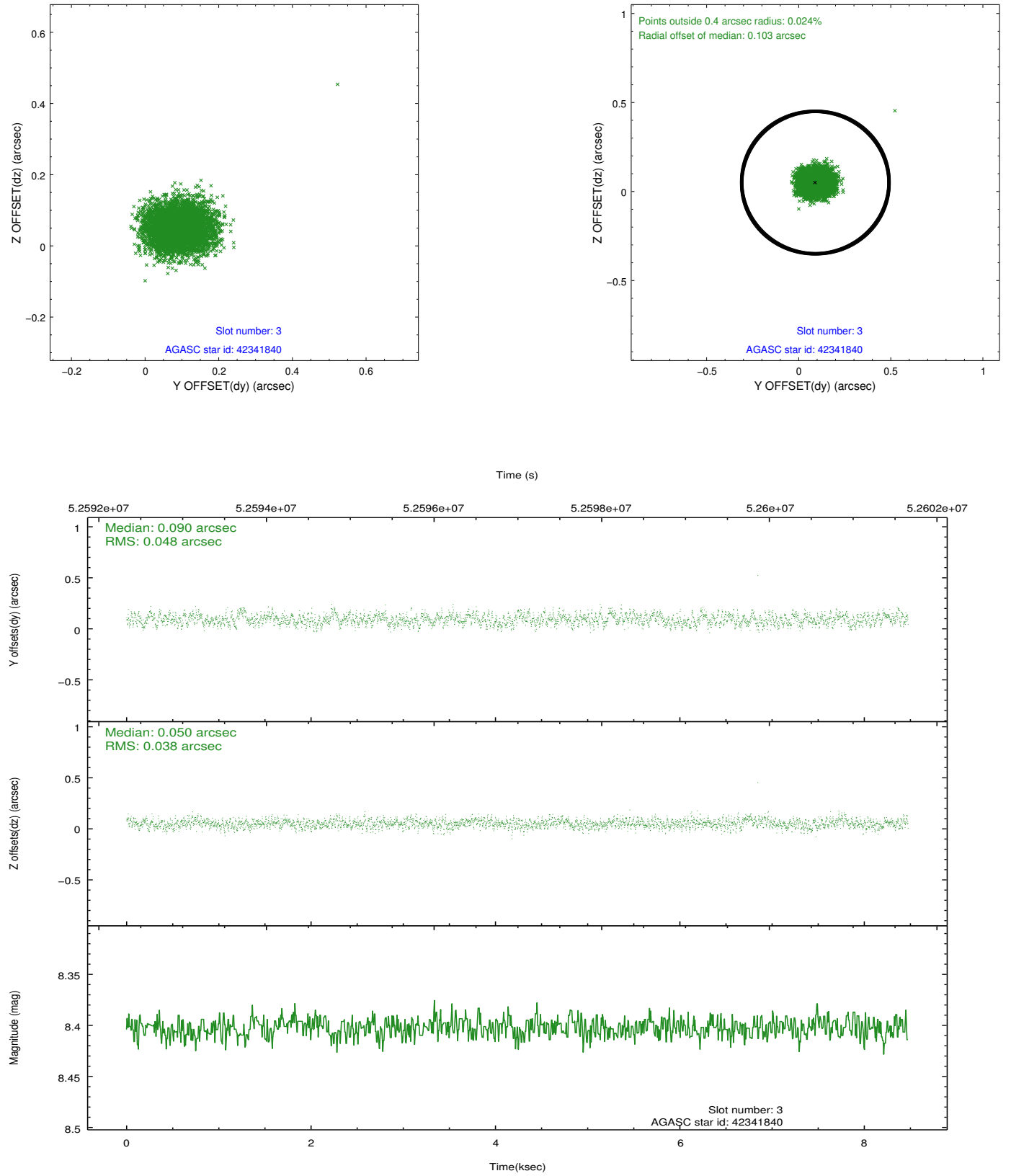


Slot Statistics

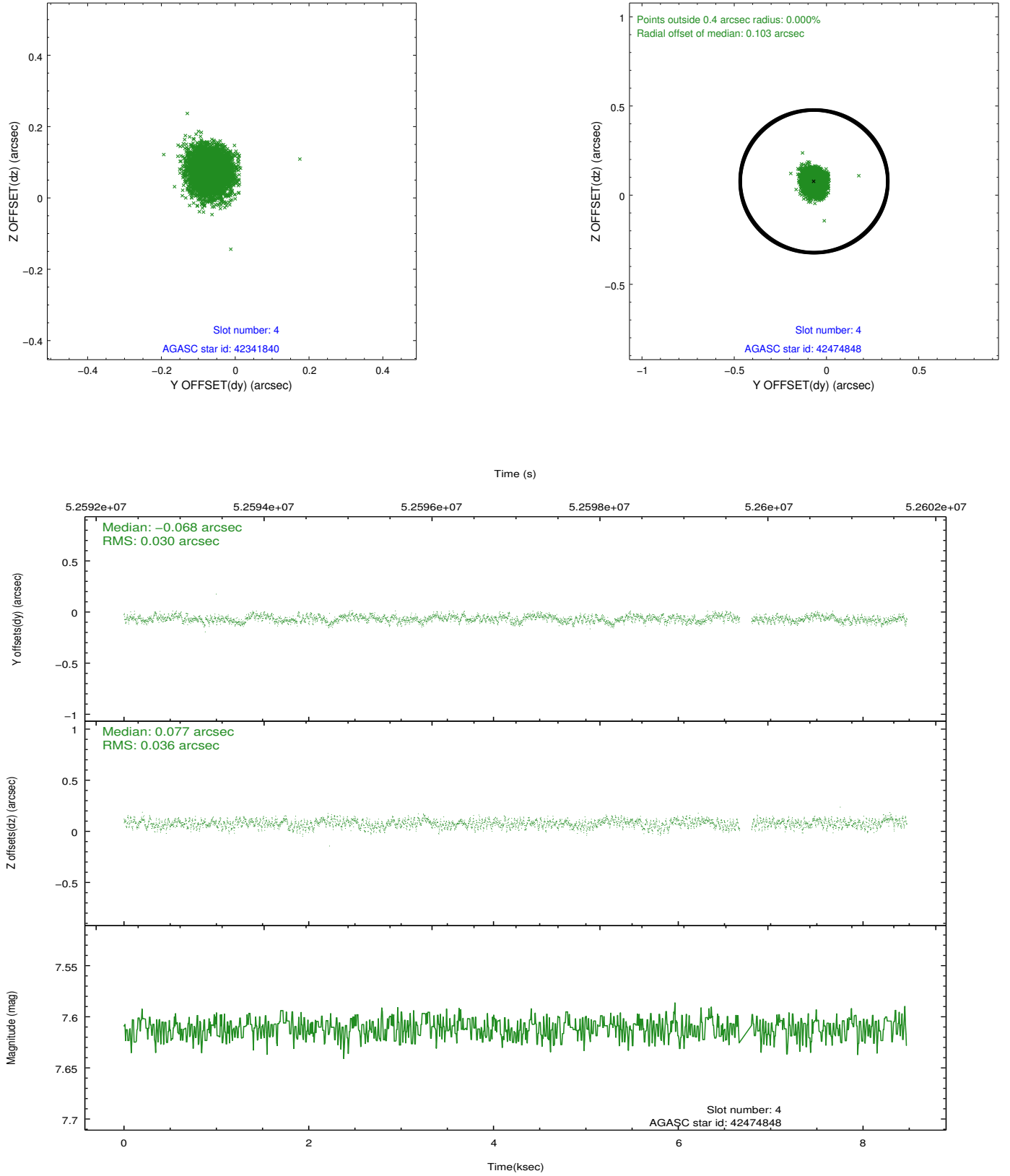
slot	status	id	mag	n_pts	med_dy	med_dz	dr1	dr2	ra	dec	mean_y	mean_z
0	FID	HRC-I-1	6.96	4134	-0.028	-0.088	0.008	0.019	0.000000	0.000000	-755.86	-1288.19
1	FID	HRC-I-3	7.04	4135	0.068	-0.043	0.007	0.014	0.000000	0.000000	-1184.55	1016.02
2	FID	HRC-I-4	6.98	4135	0.075	0.041	0.006	0.010	0.000000	0.000000	1286.57	1014.41
3	GUIDE	42341840	8.40	4134	0.090	0.050	0.066	0.102	214.867062	5.854194	2428.21	-193.91
4	GUIDE	42474848	7.61	4073	-0.068	0.077	0.051	0.079	215.355097	6.442439	152.98	1342.20
5	GUIDE	42342360	8.81	4134	0.108	-0.124	0.063	0.101	214.659937	6.232653	1142.58	-1061.59
6	GUIDE	42468232	8.99	4131	-0.035	0.127	0.105	0.163	215.593827	7.005458	-1946.89	1995.57
7	GUIDE	42338216	9.37	4131	-0.098	-0.132	0.075	0.119	214.545343	6.840230	-996.72	-1676.91

## 2.4 Star Slots

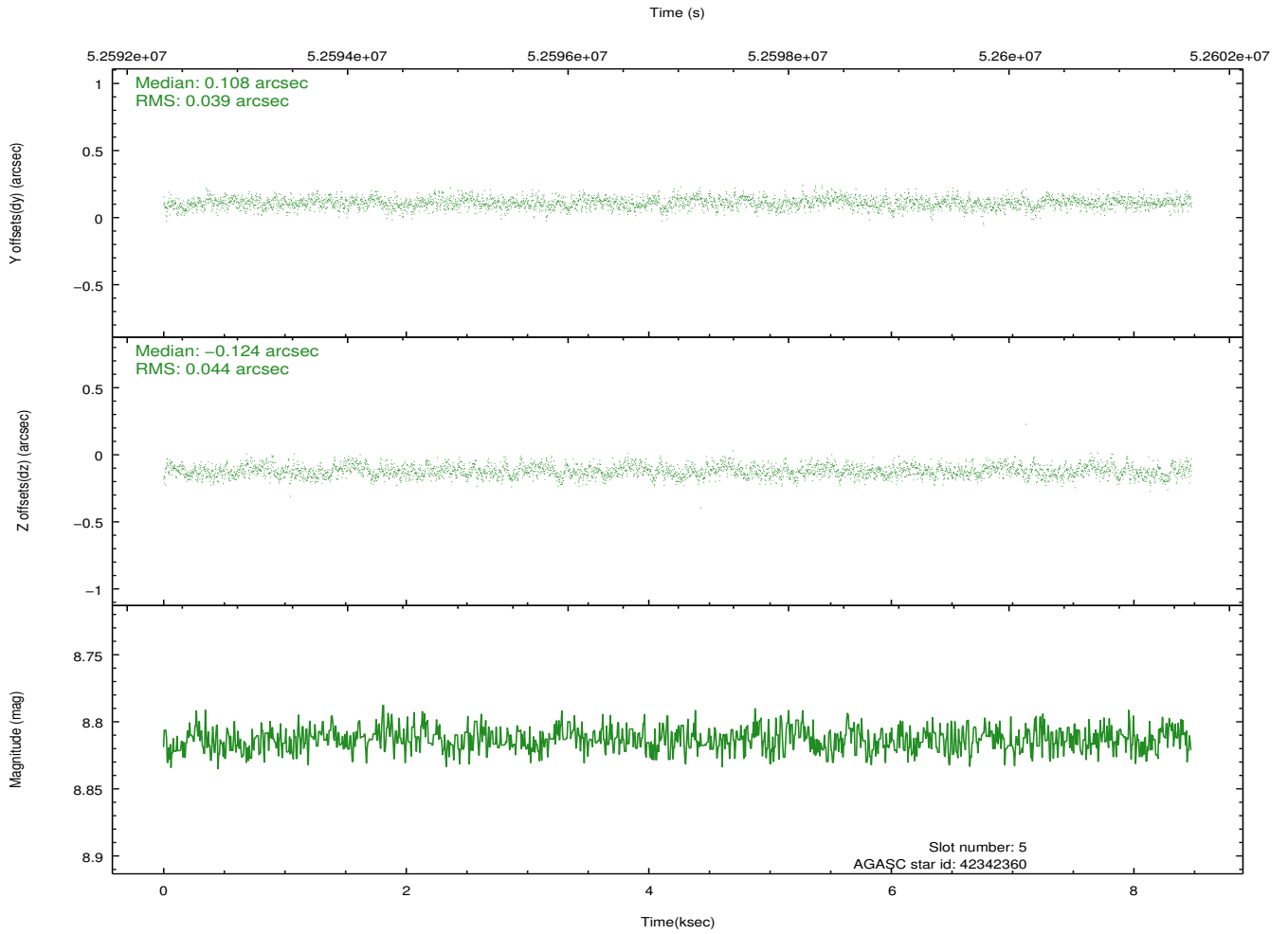
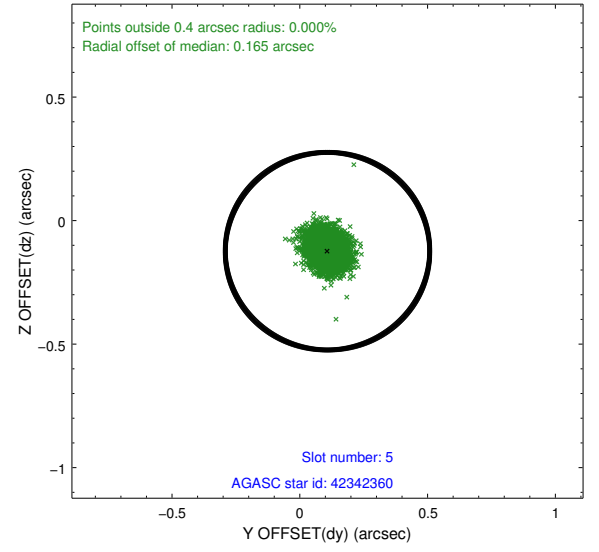
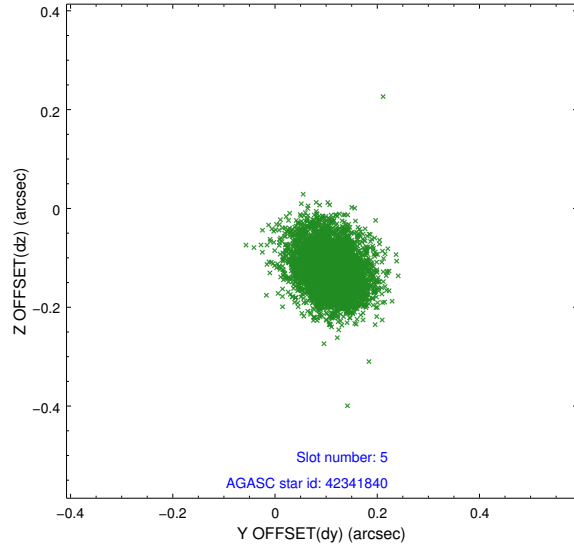
### 2.4.1 Slot 3



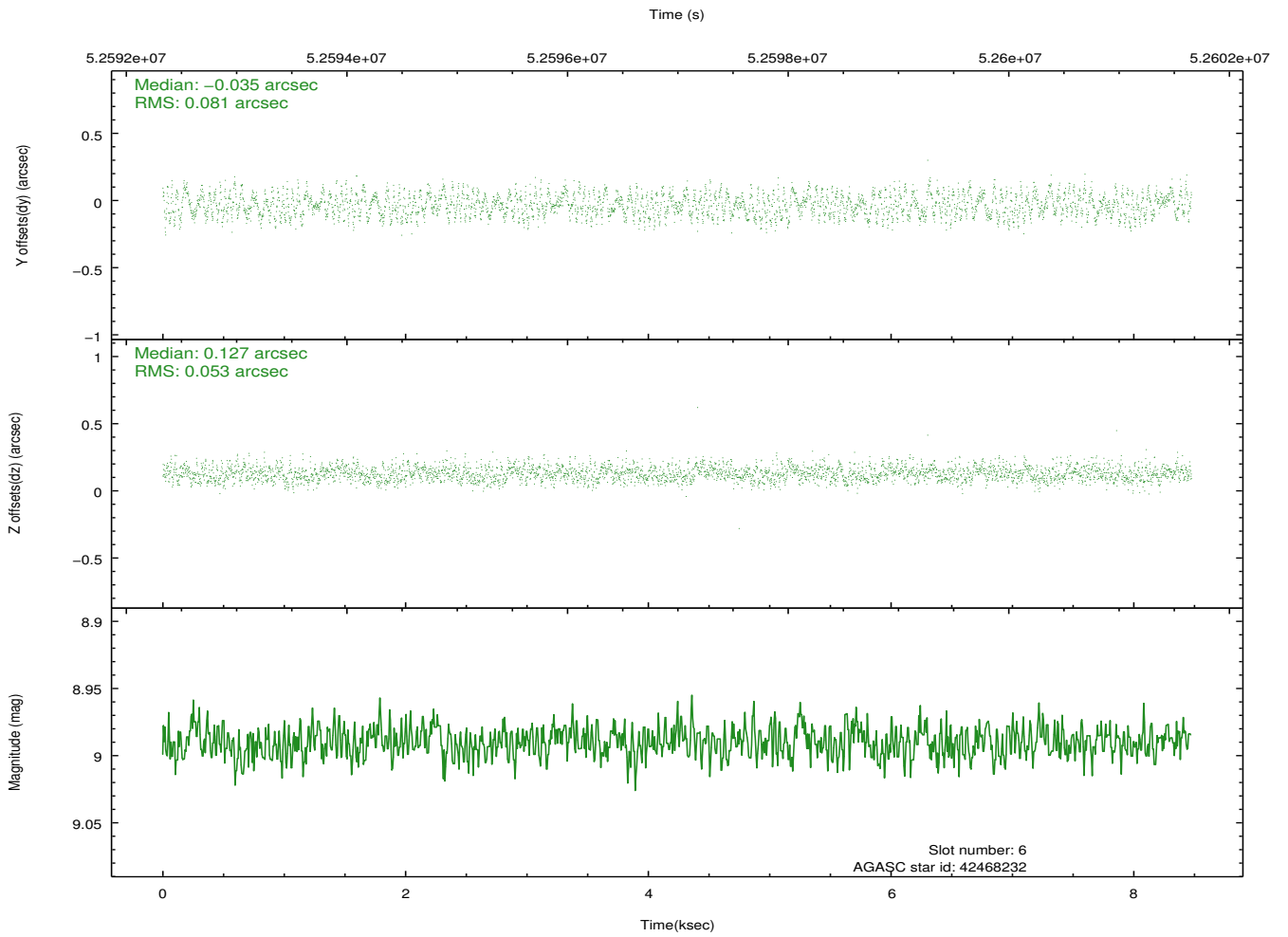
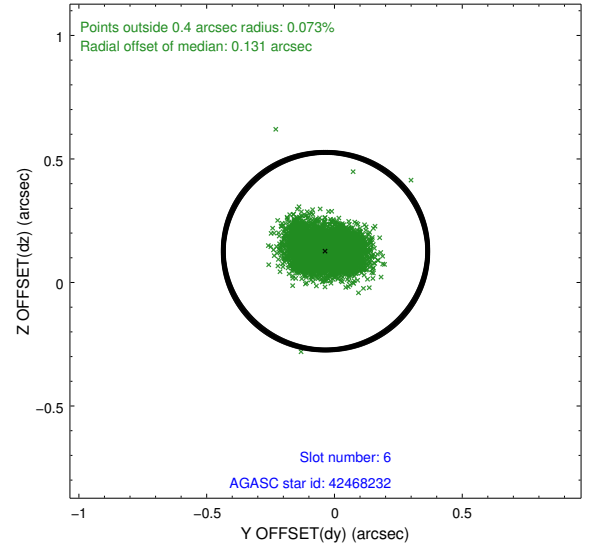
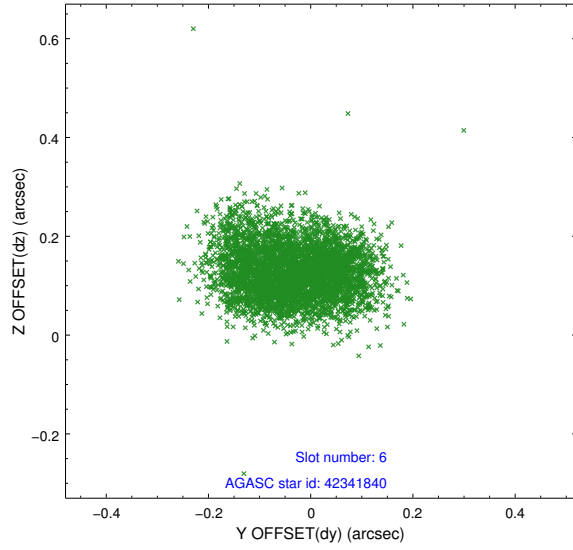
## 2.4.2 Slot 4



### 2.4.3 Slot 5

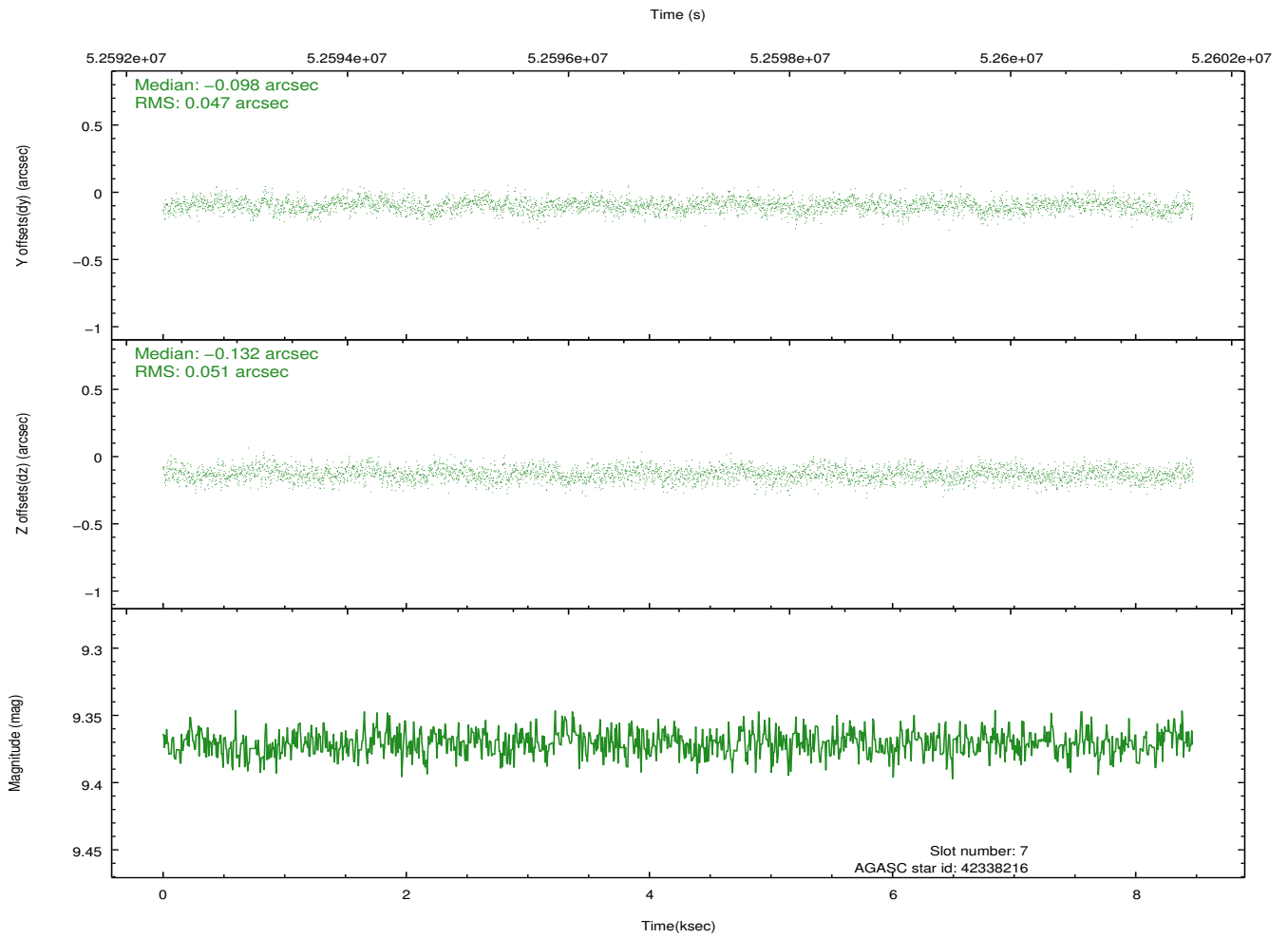
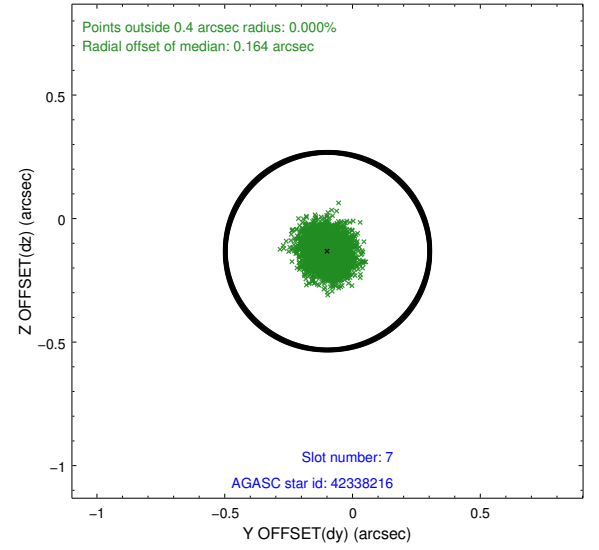
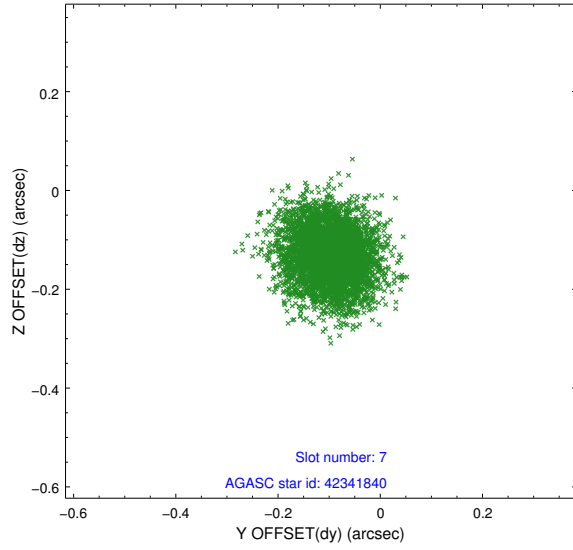


## 2.4.4 Slot 6



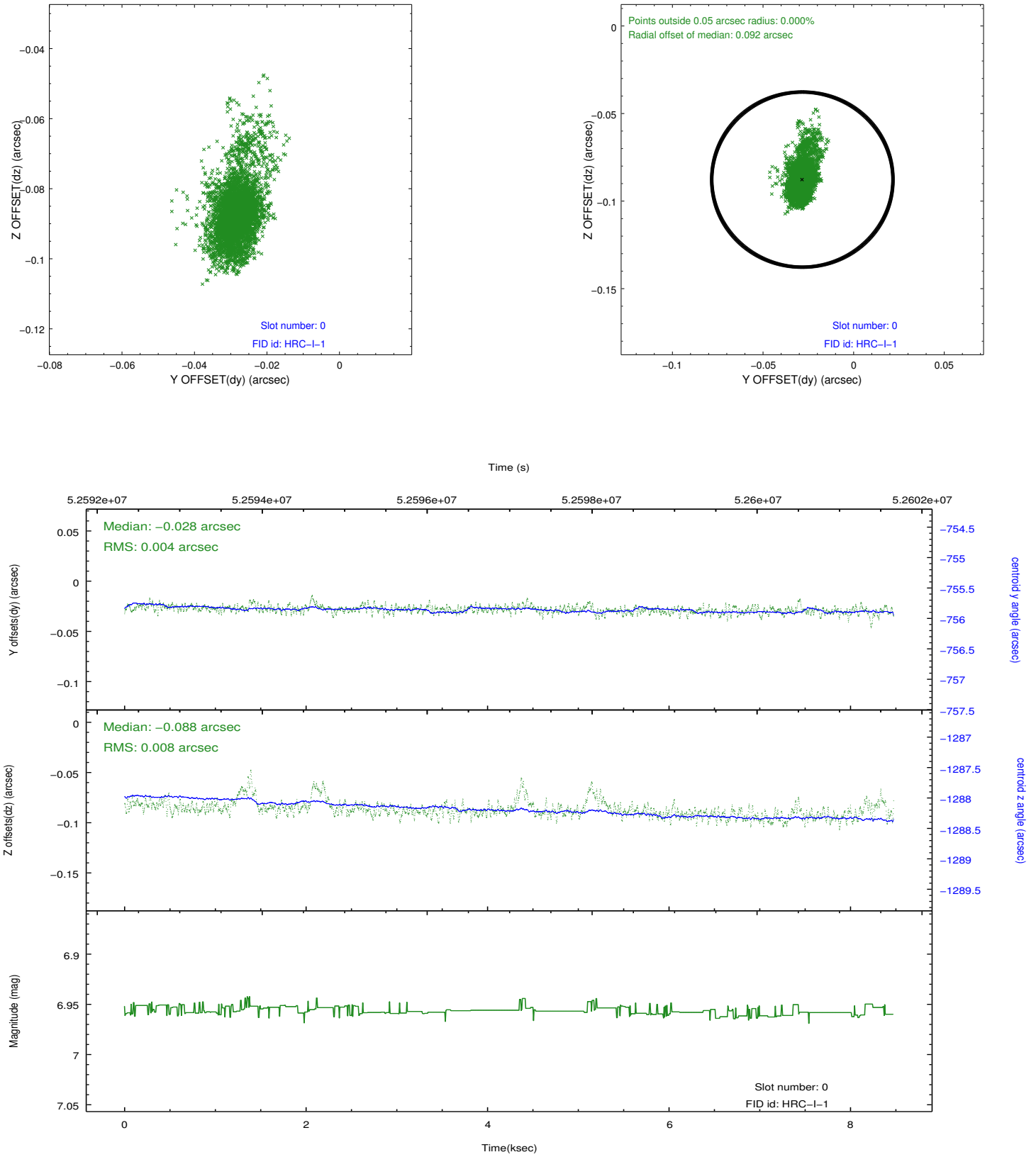


## 2.4.5 Slot 7

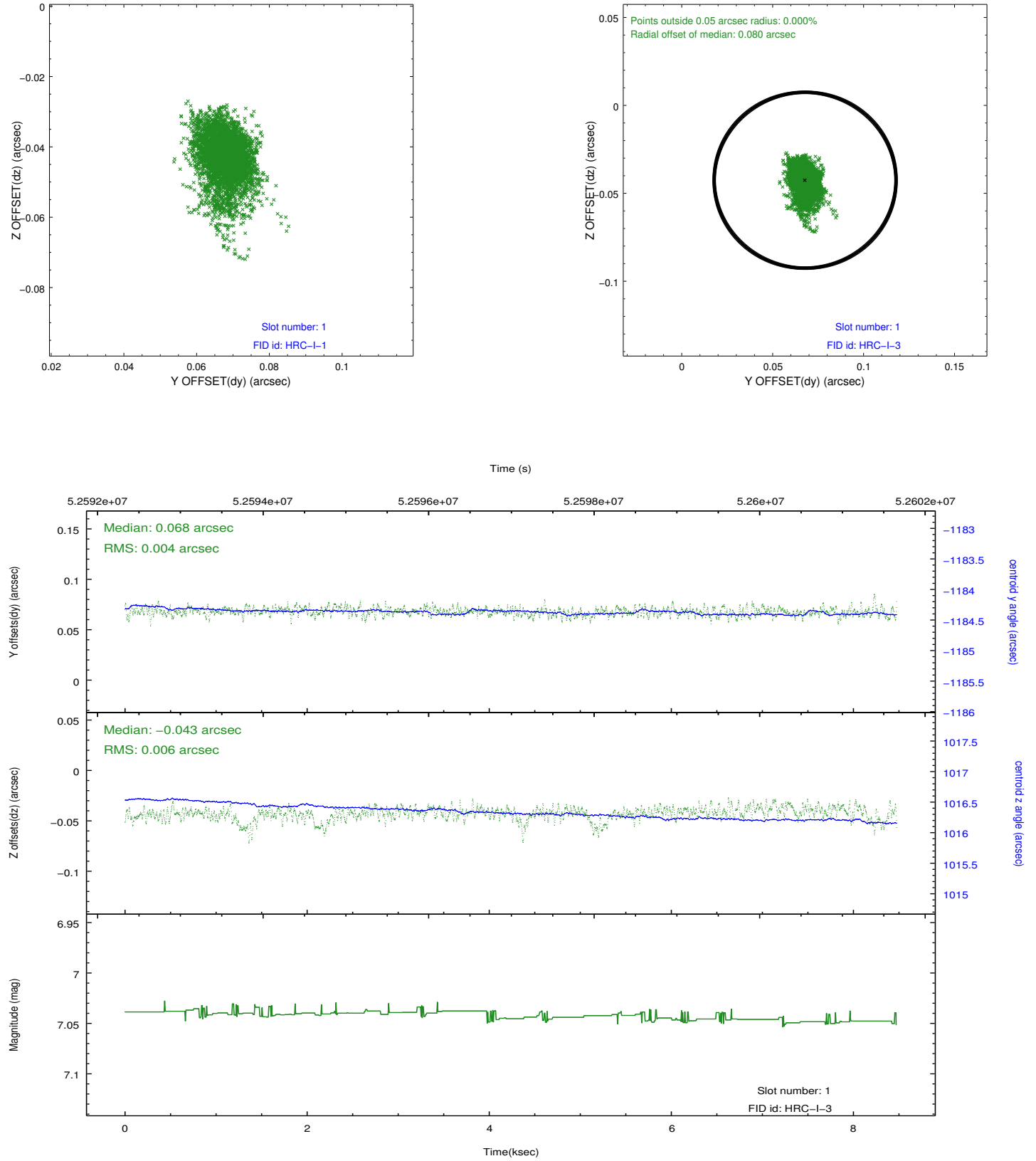


## 2.5 FID Slots

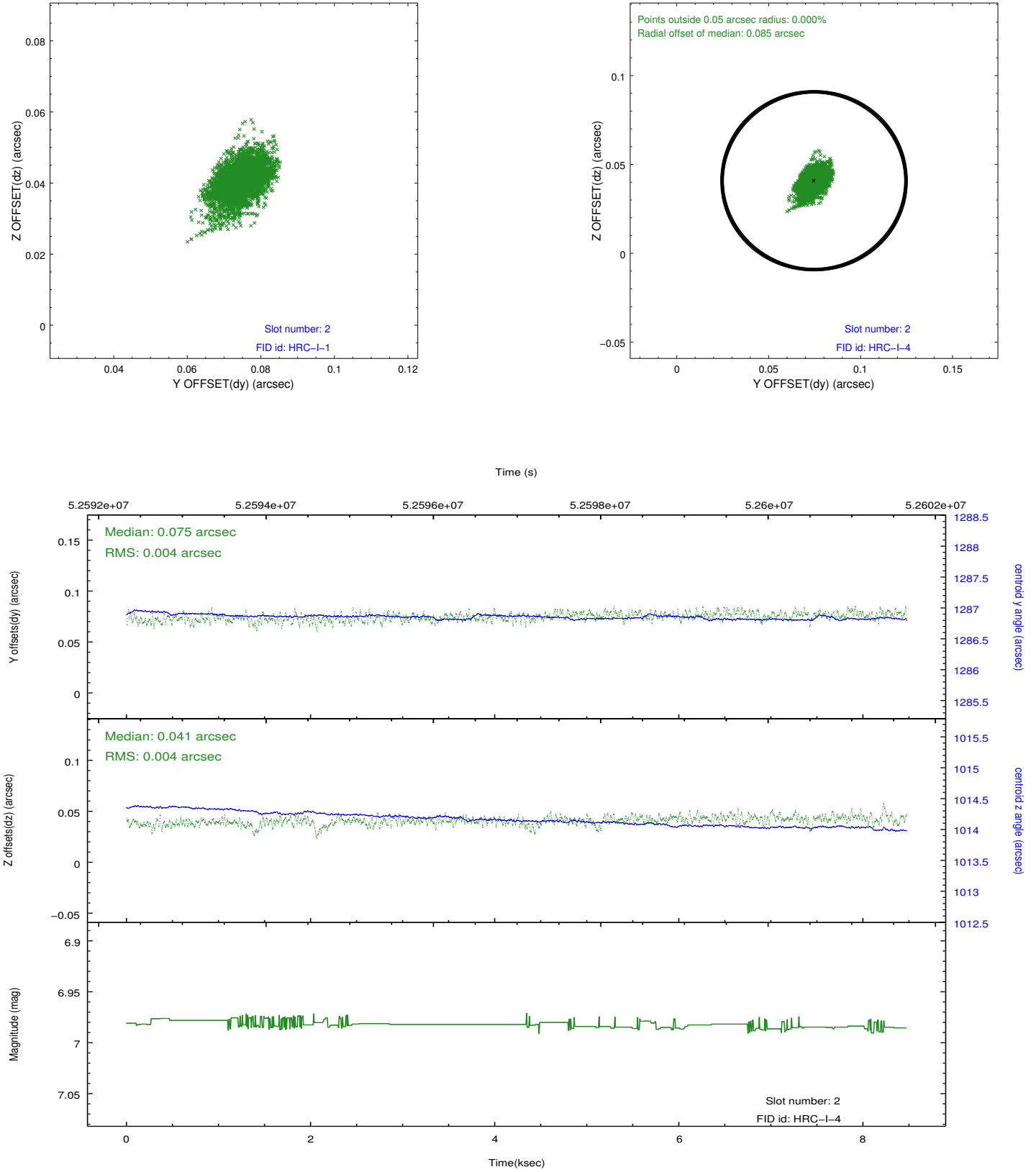
### 2.5.1 Slot 0



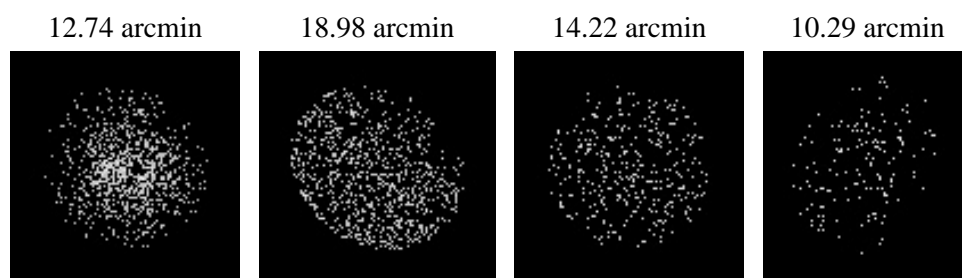
## 2.5.2 Slot 1



### 2.5.3 Slot 2



### 3 Point Sources



## A Summary

### A.1 Status

V&V Scientist	Beth Sundheim
V&V Date (YYYY-MM-DD)	2010.01.29
V&V Edition	1
V&V Disposition and Status	OK
V&V Charge Time	7.794

### A.2 Comments