

V&V Reference Report

L2 ASCDS Version : 8.2.1

Observation 1291 - L2 Version 3

Chandra X-Ray Center

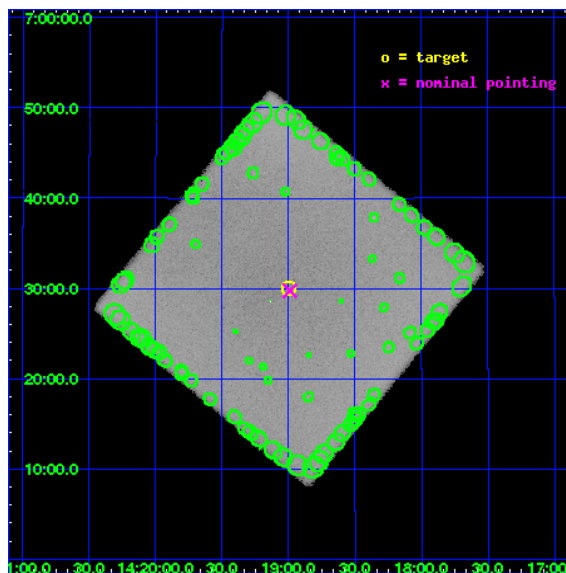
L2 Processing Date : Jan 12 2010

Contents

| | | |
|----------|-------------------------------|-----------|
| 1 | Front | 2 |
| 2 | OBI | 3 |
| 2.1 | OBI | 3 |
| 2.1.1 | Images | 3 |
| 2.1.2 | Parameters | 4 |
| 2.1.3 | Events | 4 |
| 2.2 | Compared Parameters | 5 |
| 2.3 | Aspect | 6 |
| 2.4 | Star Slots | 9 |
| 2.4.1 | Slot 3 | 9 |
| 2.4.2 | Slot 4 | 10 |
| 2.4.3 | Slot 5 | 11 |
| 2.4.4 | Slot 6 | 12 |
| 2.5 | FID Slots | 13 |
| 2.5.1 | Slot 0 | 13 |
| 2.5.2 | Slot 1 | 14 |
| 2.5.3 | Slot 2 | 15 |
| 3 | Point Sources | 16 |
| A | Summary | 17 |
| A.1 | Status | 17 |
| A.2 | Comments | 17 |

1 Front

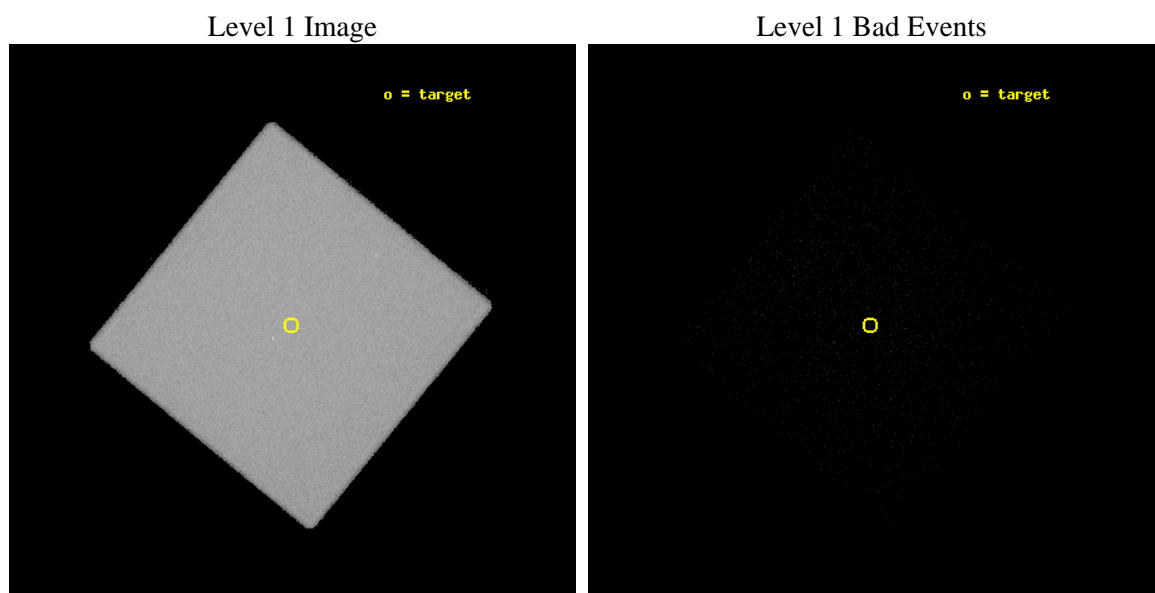
| | | |
|----------|---------------------|---------------------------------|
| seq_num | 980241 | Sequence number |
| obs_id | 1291 | Observation id |
| title | | Proposal title |
| observer | Dr. CXC Calibration | Principal investigator |
| object | MOSAIC BKGD 2 | Source name |
| ra_targ | 214.75 | Observer's specified target RA |
| dec_targ | 6.5 | Observer's specified target Dec |
| ra_nom | 214.74755111443 | Nominal RA |
| dec_nom | 6.4956450680997 | Nominal Dec |
| roll_nom | 264.38363981903 | Nominal Roll |
| revision | 3 | Processing version of data |
| ontime | 8330.4315492287 | [s] |
| livetime | 8071.6604706527 | Ontime multiplied by DTCOR |
| l2events | 796715 | Number of level 2 events |



2 OBI

2.1 OBI

2.1.1 Images



2.1.2 Parameters

| | | | | | |
|----------|---------------------|--------------------------------|----------------|-----------------|-------------------------------------|
| obi_num | 0 | Obi number | sched_exp_time | 8000.000000 | Scheduled observation exposure time |
| ascdsver | 8.2.1 | Processing system revision | ontime | 8330.4315492287 | [s] |
| caldbver | 4.1.5 | | l1events | 1355259 | Number of level 1 events |
| date | 2010-01-12T17:47:50 | Date and time of file creation | | | |
| revision | 3 | Processing version of data | | | |

2.1.3 Events

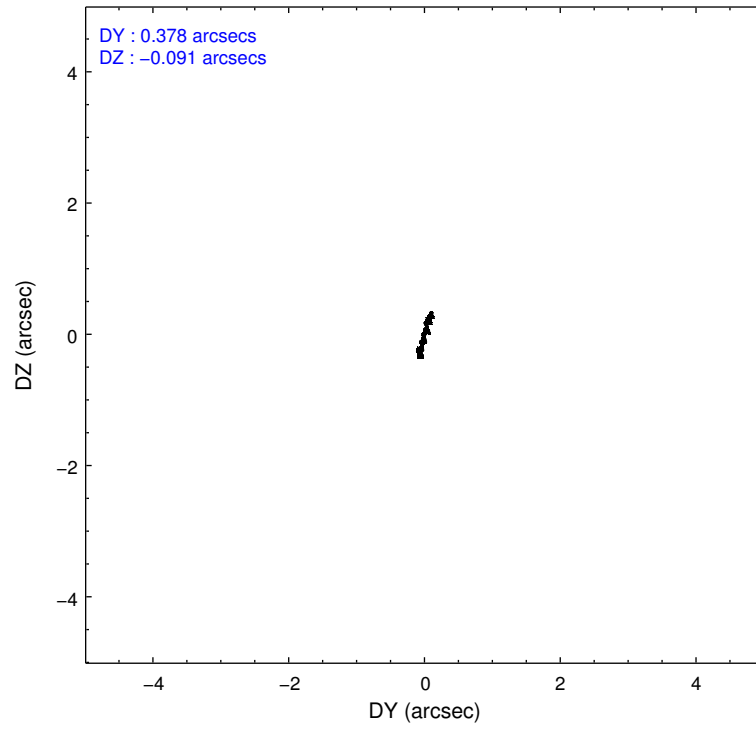
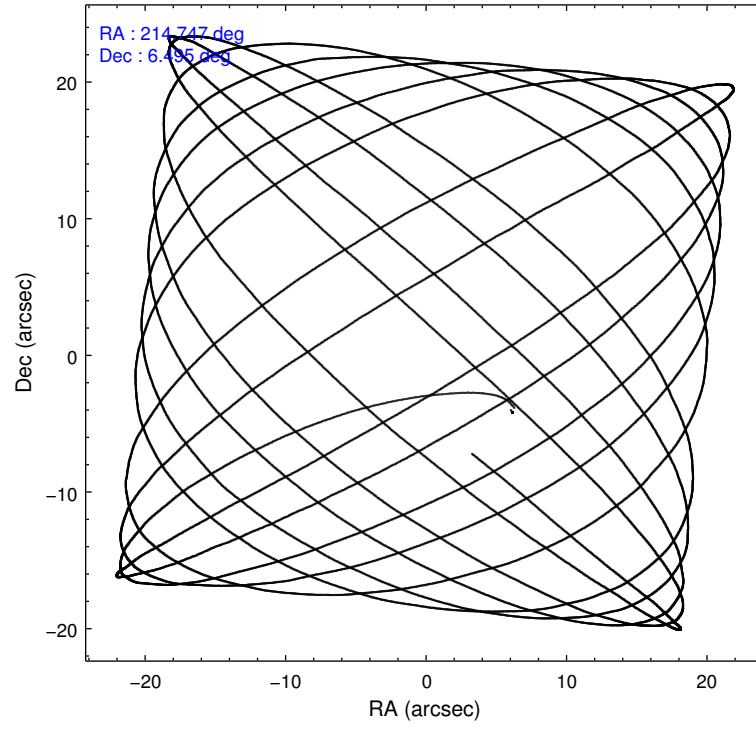
Level 1 Events

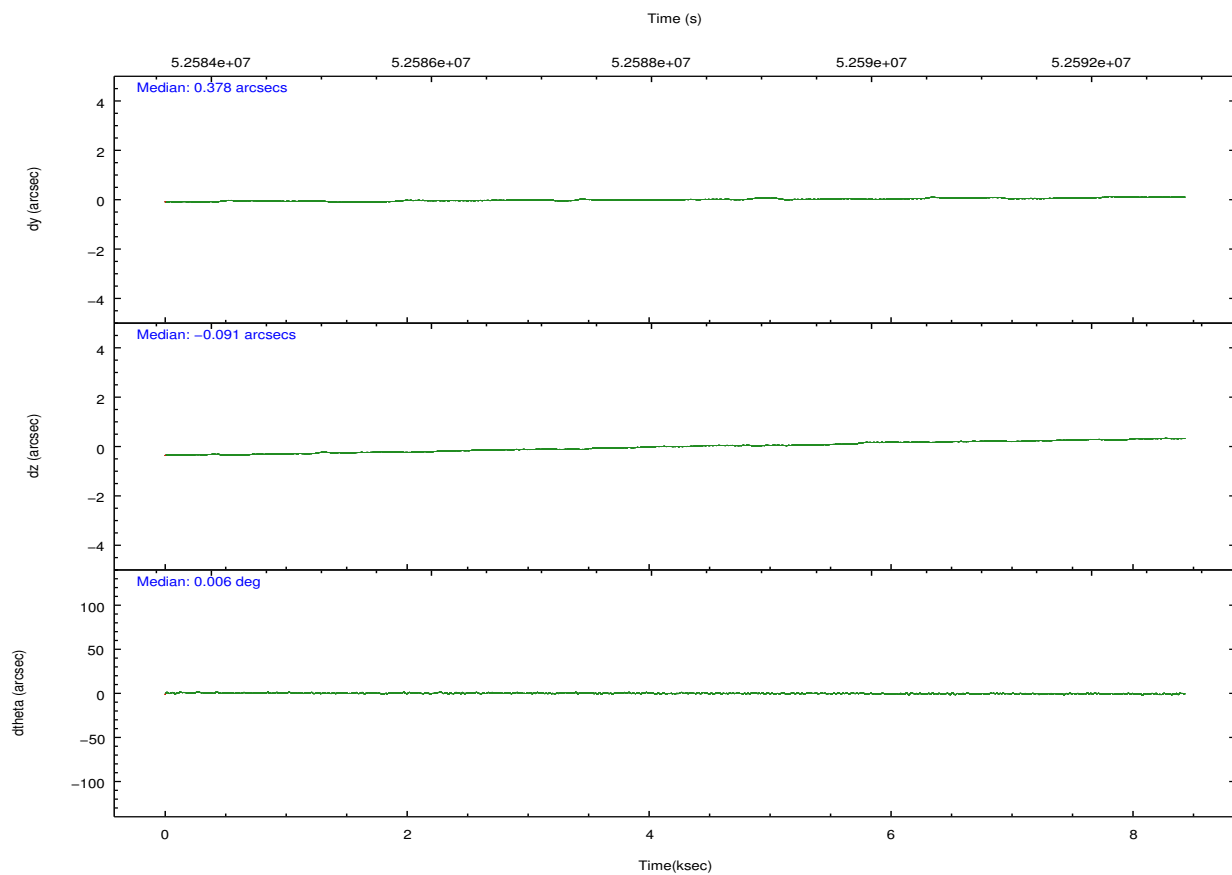
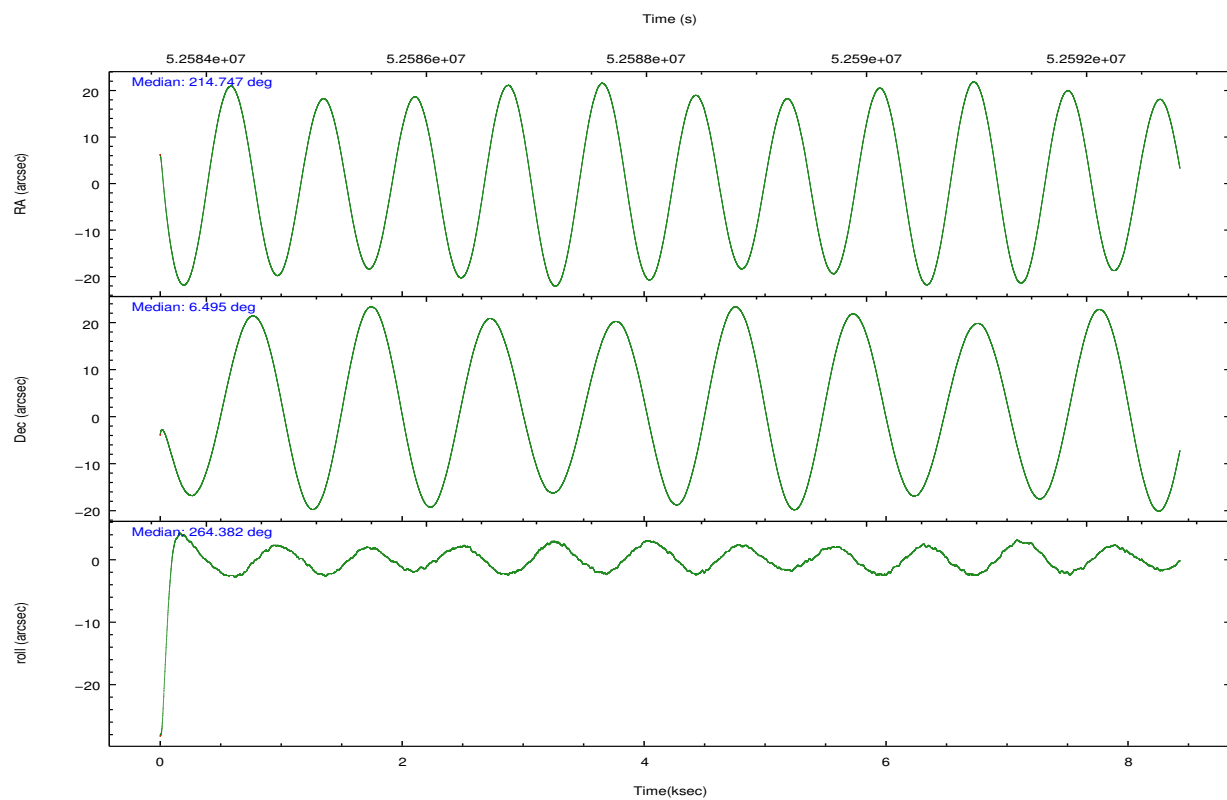
| | |
|-----------------|----------------------|
| | segment 0 |
| level 1 events | 1355259 |
| rejected events | 12838 |
| rejected % | 0% |

2.2 Compared Parameters

| Parameter | Planned | Actual | Parameter | Planned | Actual |
|-----------------------------------|---------------------|----------------------|------------------------------|-----------|---------|
| Instrument | HRC | HRC | Obspar format version number | 6 | 6 |
| Detector | HRC-I | HRC-I | Obspar file type | PREDICTED | ACTUAL |
| Grating | NONE | NONE | Obspar update status | NONE | UPDATED |
| Data mode | OBSERVING | OBSERVING | | | |
| Observation mode | POINTING | POINTING | | | |
| Pointing RA | 214.736172 | 214.7475511144277 | | | |
| Pointing Dec | 6.520745 | 6.495645068099677 | | | |
| Pointing Roll | 264.480461 | 264.3836398190275 | | | |
| SIM focus pos (mm) | -1.040293 | -1.300001029371461 | | | |
| SIM defocus (mm) | 0 | -0.259708408712586 | | | |
| SIM translation stage pos (mm) | 126.985494 | 126.9829799899862 | | | |
| SIM translation stage offset (mm) | 0 | 0.002508901615314585 | | | |
| Observation start time | 52584431.184000 | 52582826.076682 | | | |
| Observation start date | 1999-09-01T14:46:07 | 1999-09-01T14:20:26 | | | |
| Observation end time | 52592431.184000 | 52592564.602032 | | | |
| Observation end date | 1999-09-01T16:59:27 | 1999-09-01T17:02:44 | | | |

2.3 Aspect



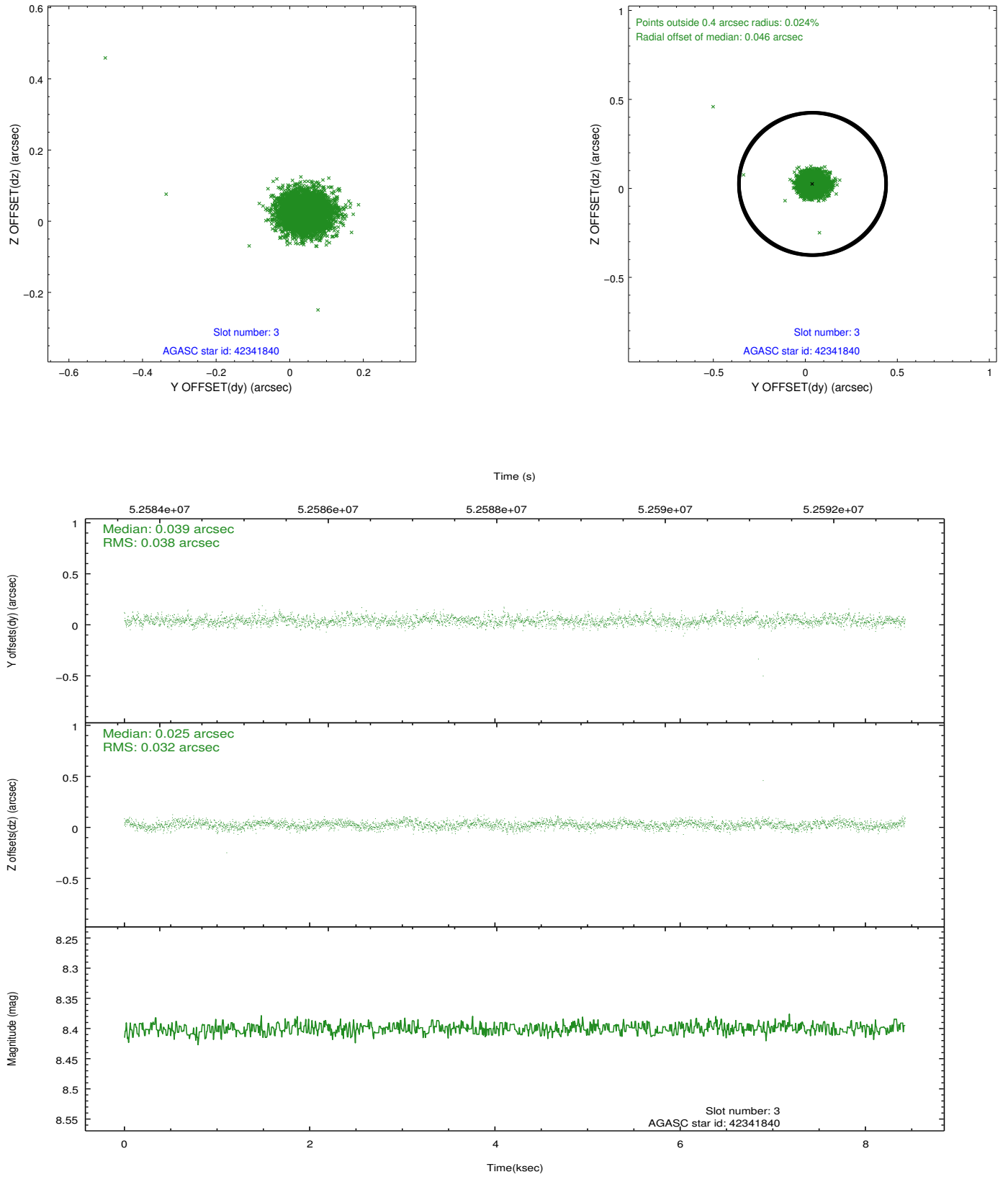


Slot Statistics

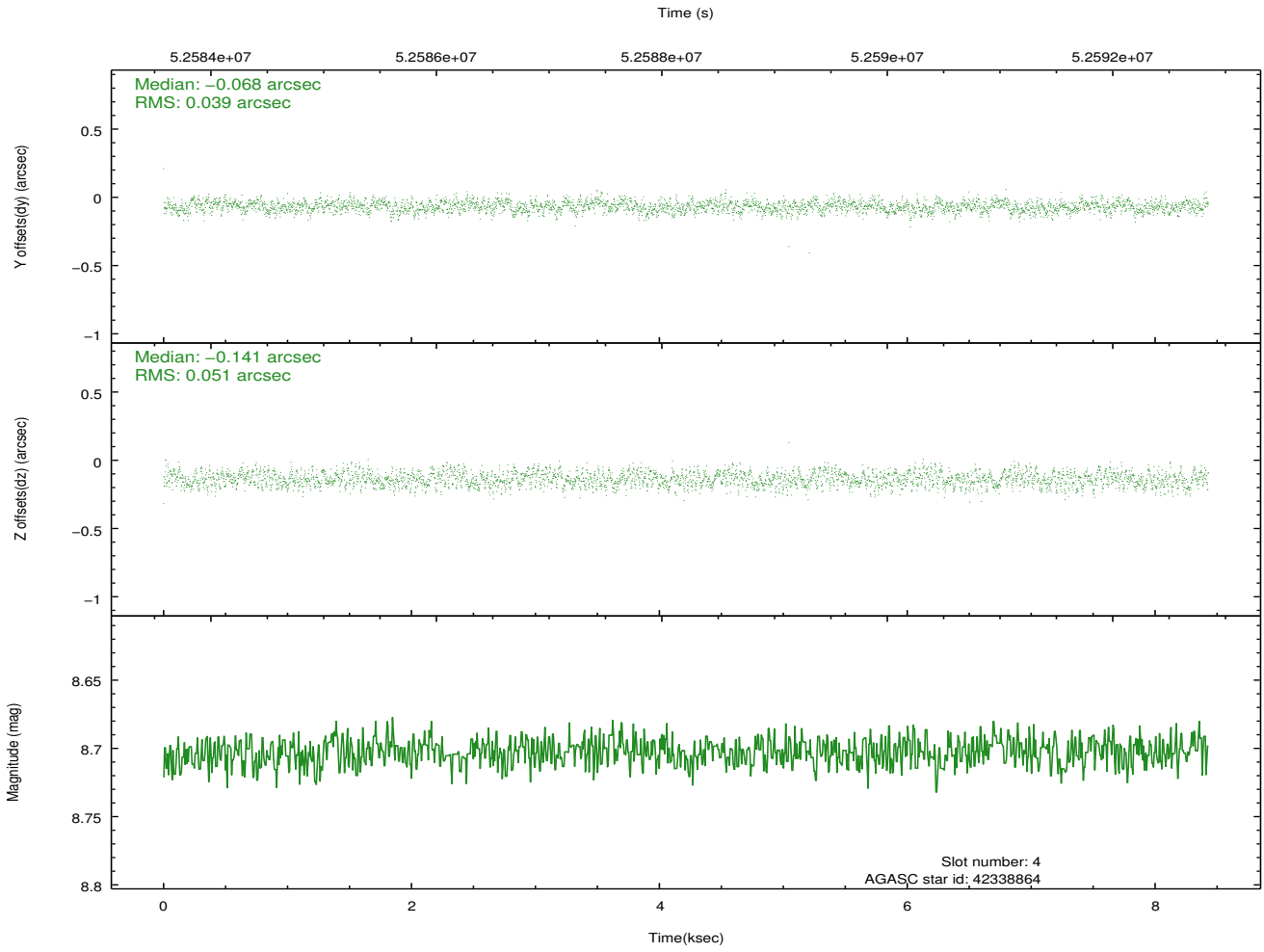
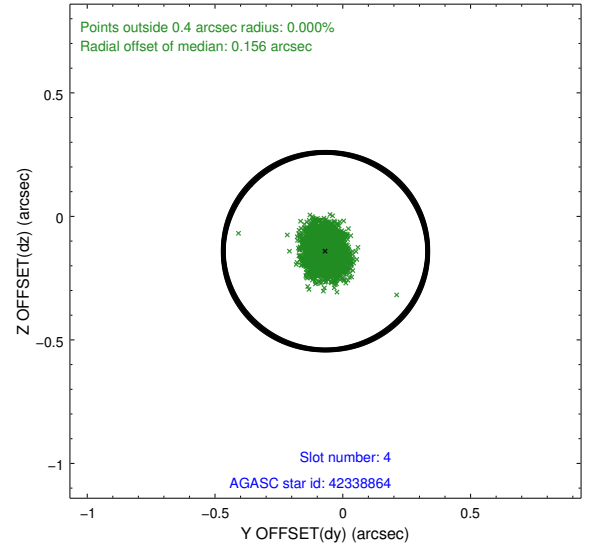
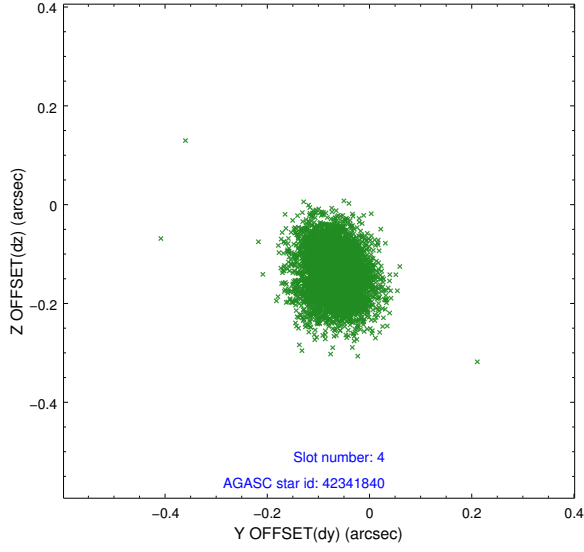
| slot | status | id | mag | n_pts | med_dy | med_dz | dr1 | dr2 | ra | dec | mean_y | mean_z |
|------|--------|----------|------|-------|--------|--------|-------|-------|------------|----------|----------|----------|
| 0 | FID | HRC-I-1 | 6.96 | 4113 | -0.016 | -0.071 | 0.009 | 0.015 | 0.000000 | 0.000000 | -755.71 | -1287.61 |
| 1 | FID | HRC-I-3 | 7.04 | 4112 | 0.062 | -0.045 | 0.007 | 0.011 | 0.000000 | 0.000000 | -1184.41 | 1016.58 |
| 2 | FID | HRC-I-4 | 6.98 | 4113 | 0.068 | 0.027 | 0.009 | 0.014 | 0.000000 | 0.000000 | 1286.70 | 1014.95 |
| 3 | GUIDE | 42341840 | 8.40 | 4113 | 0.039 | 0.025 | 0.051 | 0.083 | 214.867062 | 5.854194 | 2342.20 | 698.87 |
| 4 | GUIDE | 42338864 | 8.70 | 4112 | -0.068 | -0.141 | 0.068 | 0.108 | 214.291523 | 6.752765 | -679.81 | -1661.29 |
| 5 | GUIDE | 42342360 | 8.81 | 4113 | 0.126 | 0.079 | 0.057 | 0.092 | 214.659937 | 6.232653 | 1057.36 | -170.73 |
| 6 | GUIDE | 42338216 | 9.37 | 4109 | -0.099 | 0.037 | 0.074 | 0.119 | 214.545343 | 6.840230 | -1080.30 | -788.25 |
| 7 | UNUSED | | 0.00 | 0 | 0.000 | 0.000 | 0.000 | 0.000 | 0.000000 | 0.000000 | 0.00 | 0.00 |

2.4 Star Slots

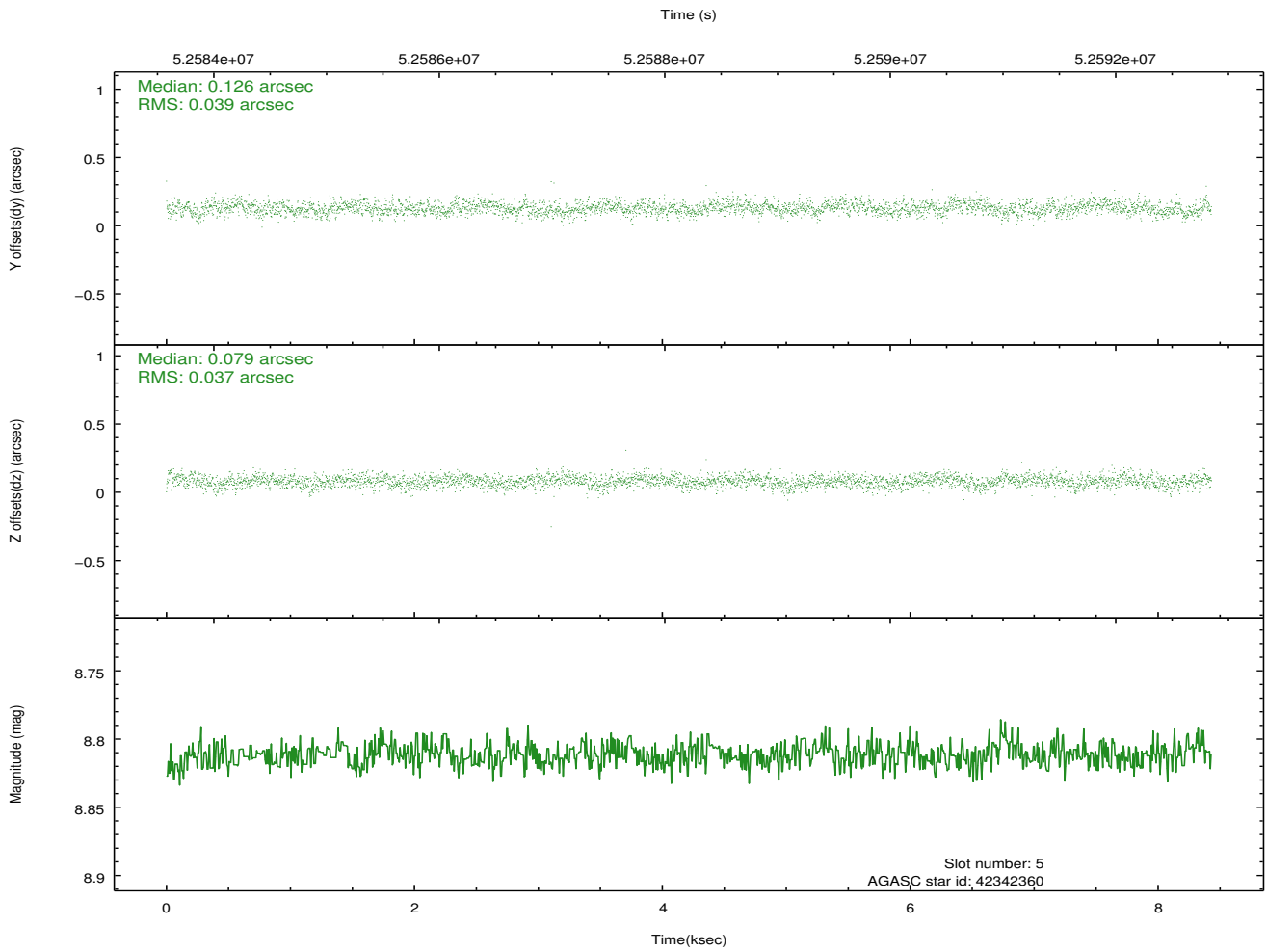
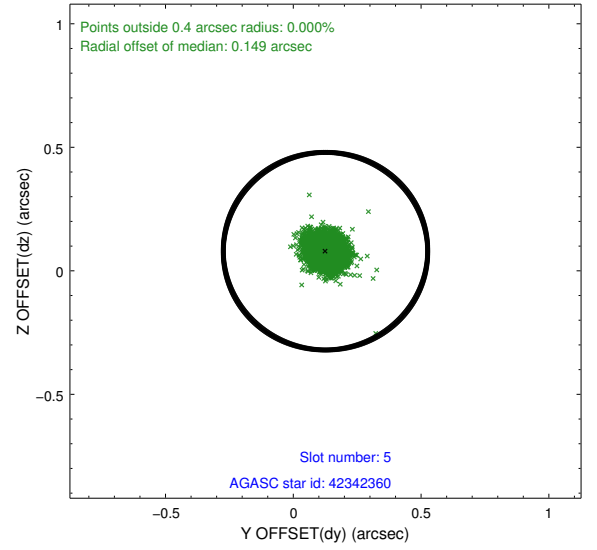
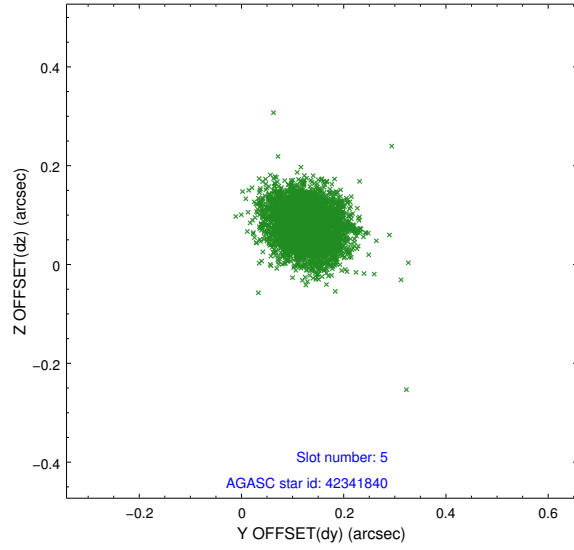
2.4.1 Slot 3



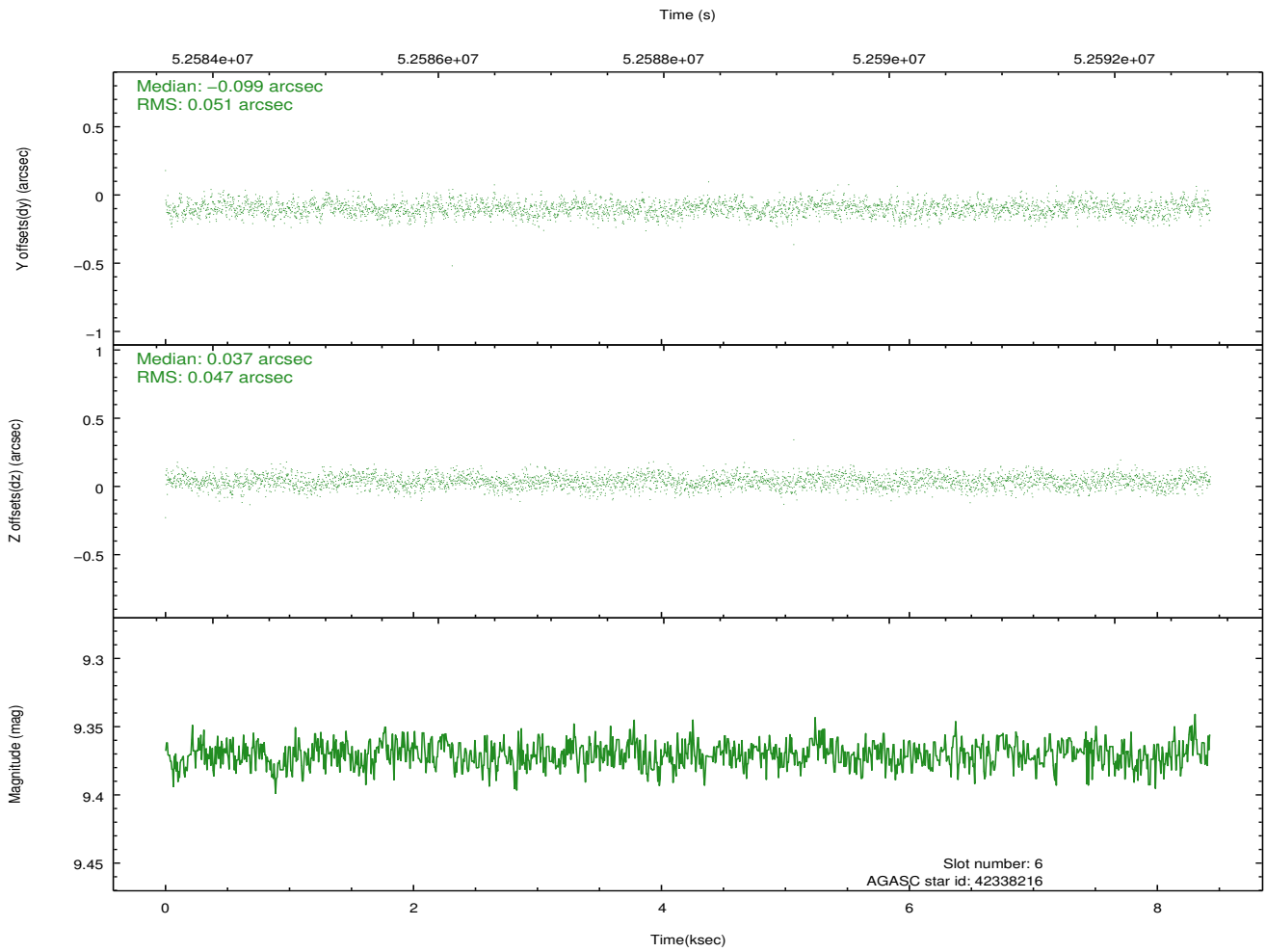
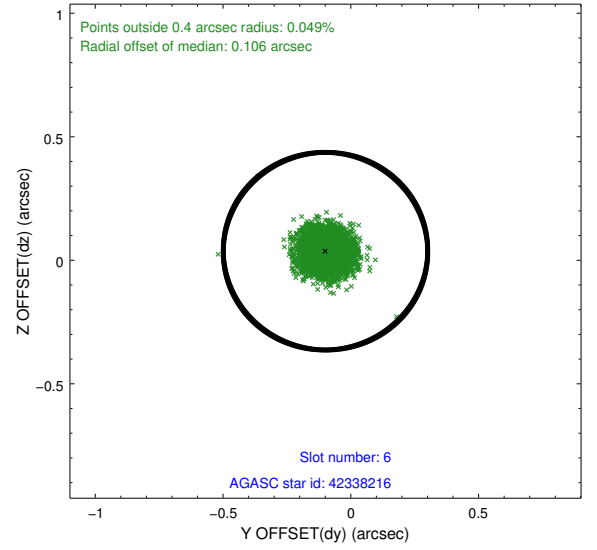
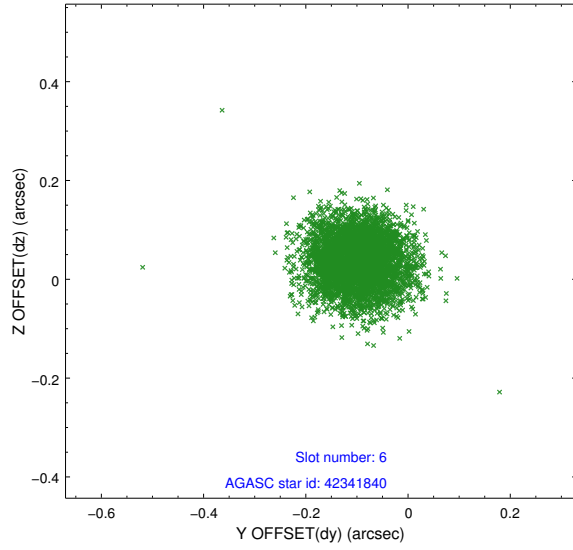
2.4.2 Slot 4



2.4.3 Slot 5

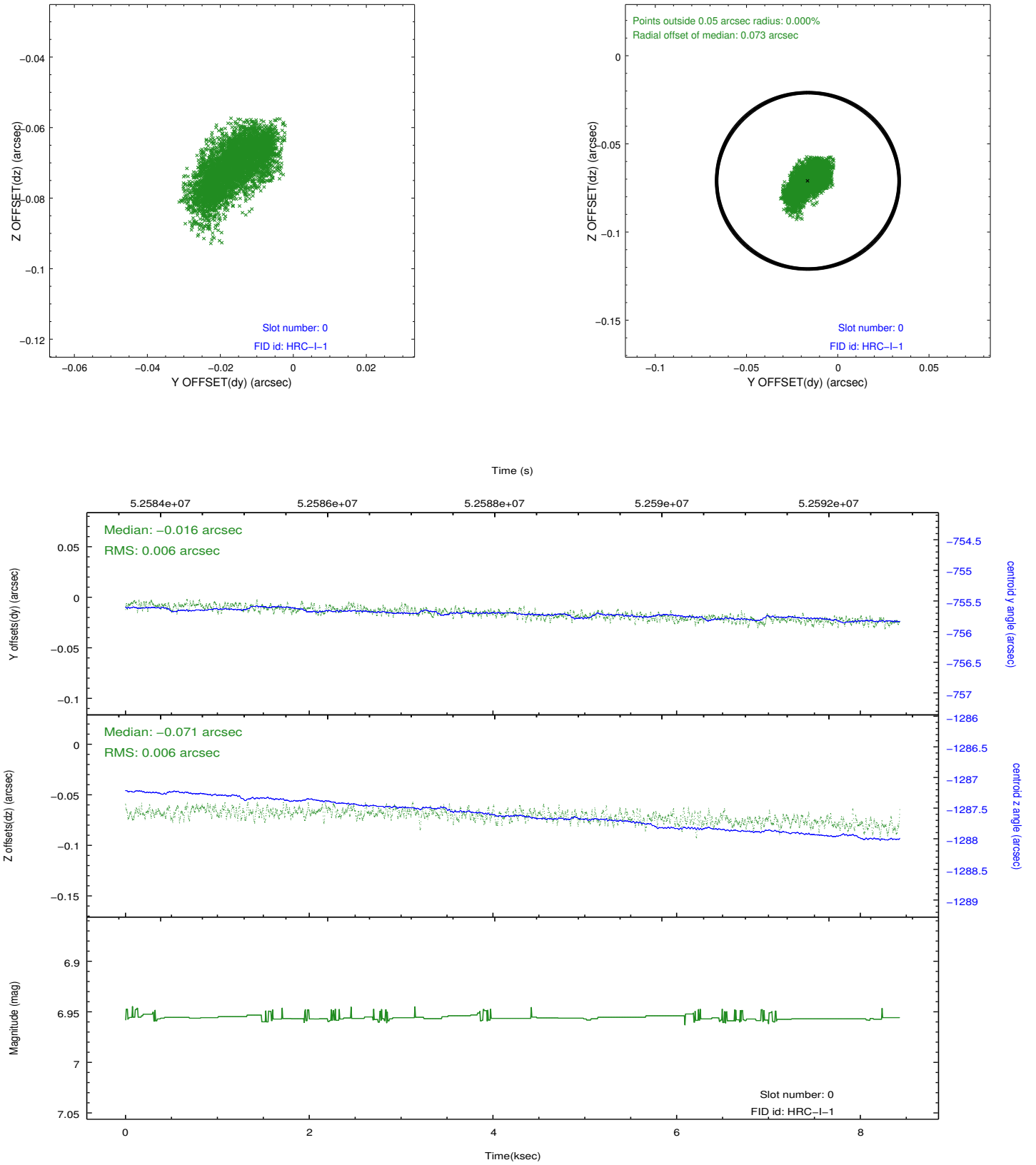


2.4.4 Slot 6

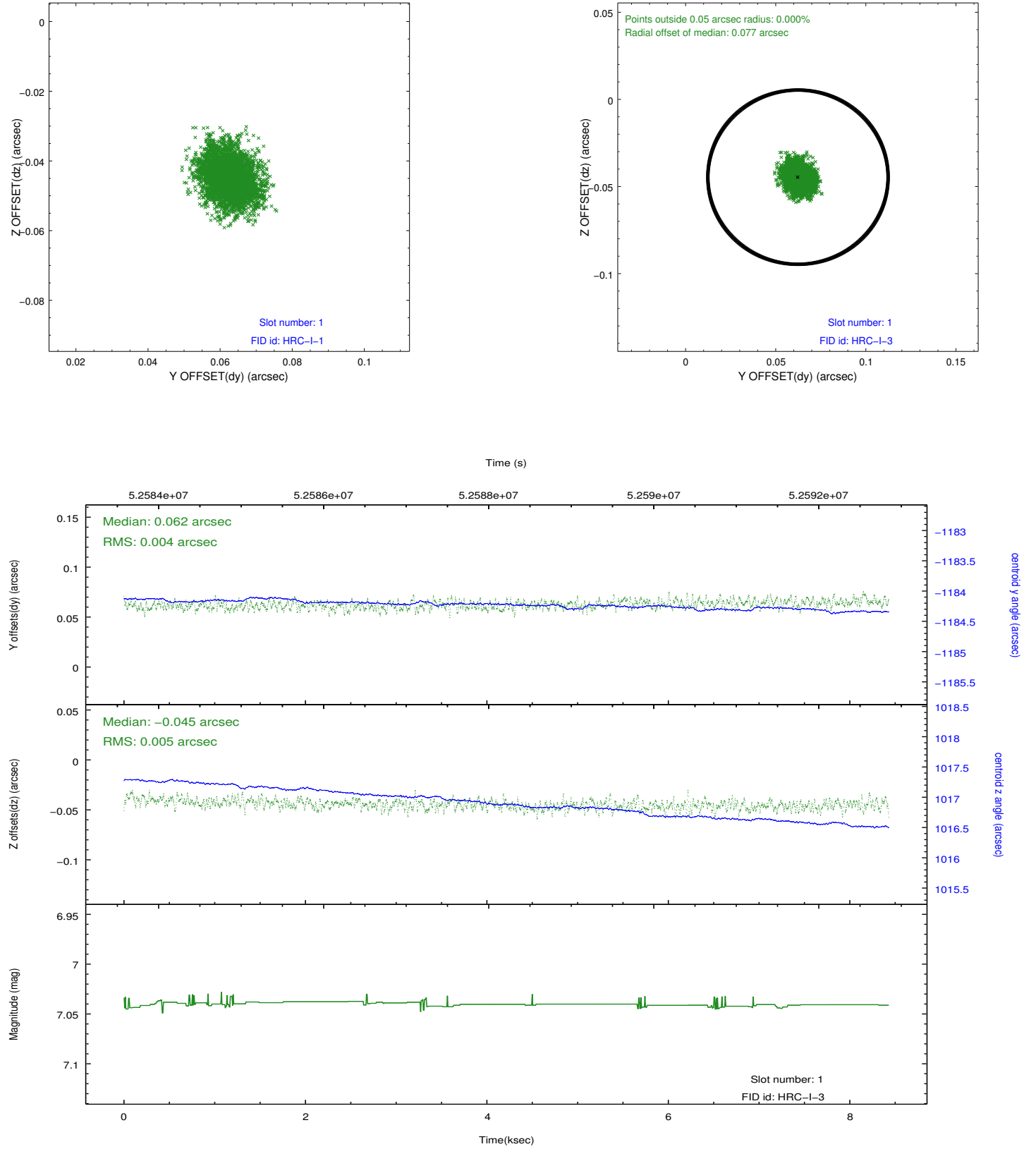


2.5 FID Slots

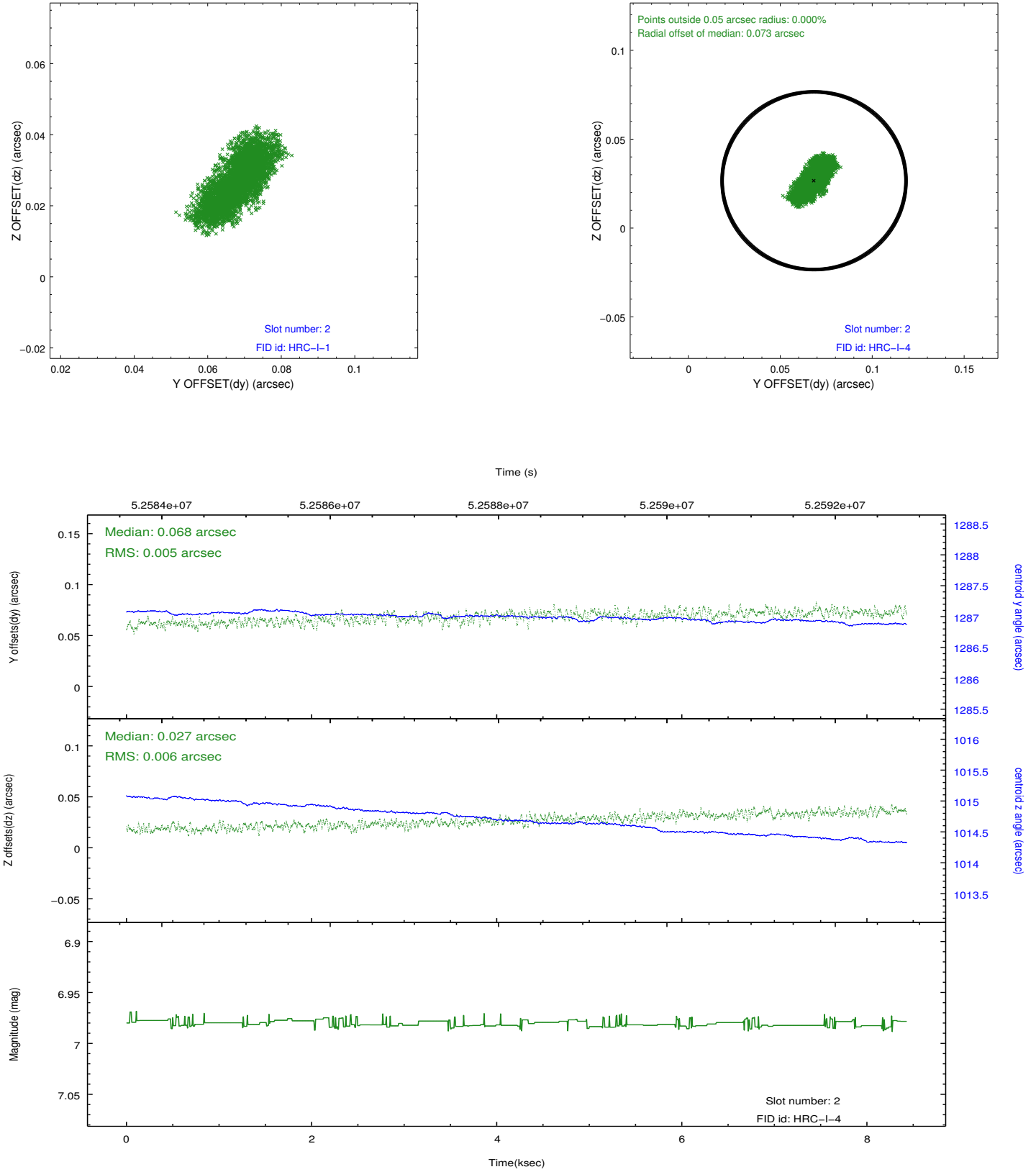
2.5.1 Slot 0



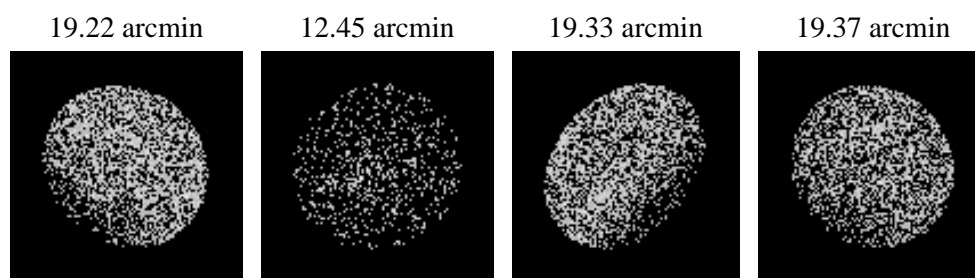
2.5.2 Slot 1



2.5.3 Slot 2



3 Point Sources



A Summary

A.1 Status

| | |
|----------------------------|-------------|
| V&V Scientist | Joy Nichols |
| V&V Date (YYYY-MM-DD) | 2010.01.21 |
| V&V Edition | 1 |
| V&V Disposition and Status | OK |
| V&V Charge Time | 8.328 |

A.2 Comments

Mosaic Bkgd

===

The guide star in slot 7 was not used in this observation.