

V&V Reference Report

L2 ASCDS Version : 8.1.2

Observation 468 - L2 Version 2

Chandra X-Ray Center

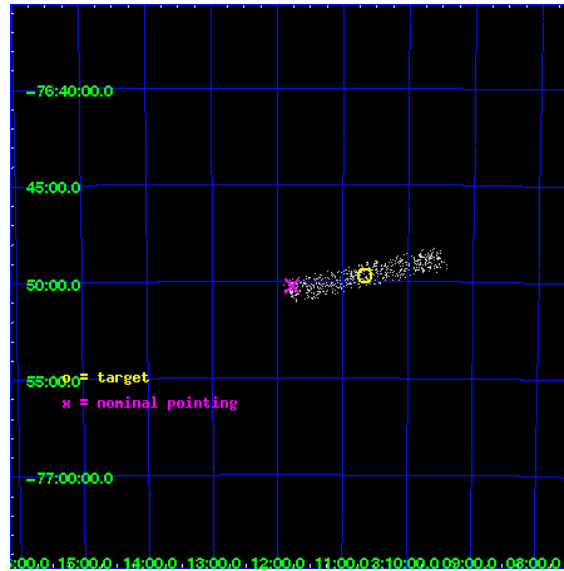
L2 Processing Date : Dec 17 2009

Contents

1	Front	2
2	OBI	3
2.1	OBI	3
2.1.1	Images	3
2.1.2	Bias	3
2.1.3	Parameters	4
2.1.4	Events	4
2.2	Compared Parameters	5
2.3	Aspect	6
2.4	Star Slots	9
2.4.1	Slot 3	9
2.4.2	Slot 4	10
2.4.3	Slot 5	11
2.4.4	Slot 6	12
2.4.5	Slot 7	13
2.5	FID Slots	14
2.5.1	Slot 0	14
2.5.2	Slot 1	15
2.5.3	Slot 2	16
3	Point Sources	17
A	Summary	18
A.1	Status	18
A.2	Comments	18

1 Front

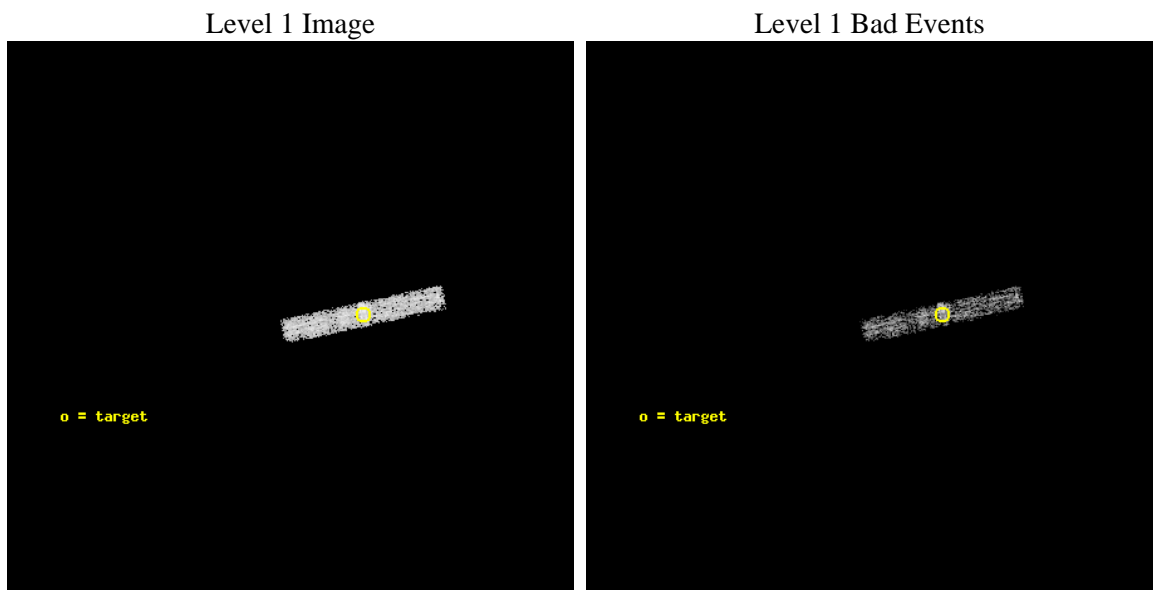
seq_num	790029	Sequence number
obs_id	468	Observation id
title	Blank sky; mispointed calibration	Proposal title
observer	Dr. CXC Calibration	Principal investigator
object	Blank Sky	Source name
dtcycle	0	
cycle	P	events from which exps? Prim/Second/Both
ra_targ	47.6659	Observer's specified target RA
dec_targ	-76.8284	Observer's specified target Dec
ra_nom	47.945551451213	Nominal RA
dec_nom	-76.837269013033	Nominal Dec
roll_nom	77.910068640029	Nominal Roll
revision	2	Processing version of data
ontime	4853.5	Sum of GTIs [s]
livetime	4485.3430430282	Livetime [s]
ontime3	4853.5	Sum of GTIs [s]
l2events	612	Number of level 2 events



2 OBI

2.1 OBI

2.1.1 Images



2.1.2 Bias

Chip 3



2.1.3 Parameters

obi_num	0	Obi number	sched_exp_time	5000.000000	Scheduled observation exposure time
ascdsver	8.1.2	ASCDS version number	ontime	4853.5	Sum of GTIs [s]
caldbver	4.1.4	 	ontime3	4853.5	Sum of GTIs [s]
date	2009-12-17T06:20:42	Date and time of file creation	l1events	10682	Number of level 1 events
revision	2	Processing version of data			

2.1.4 Events

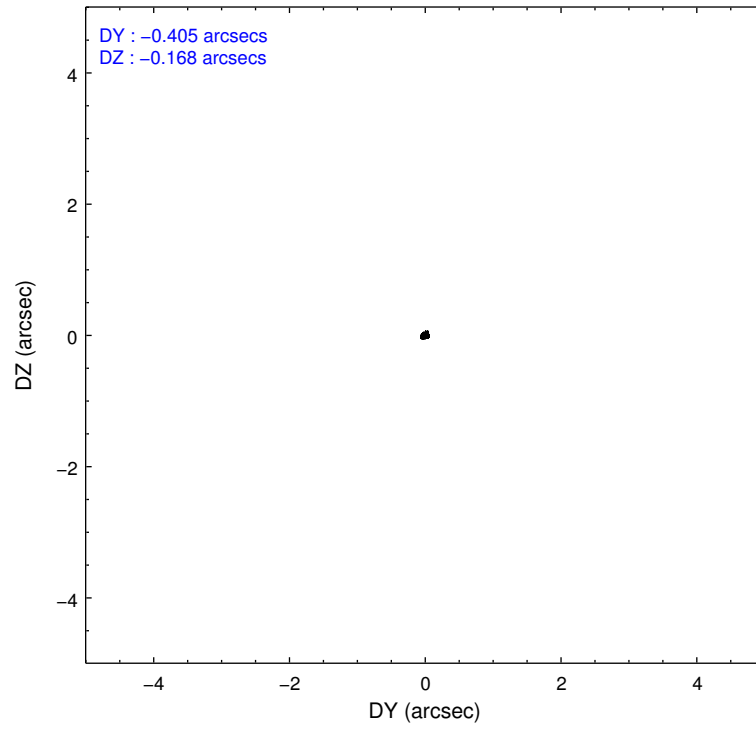
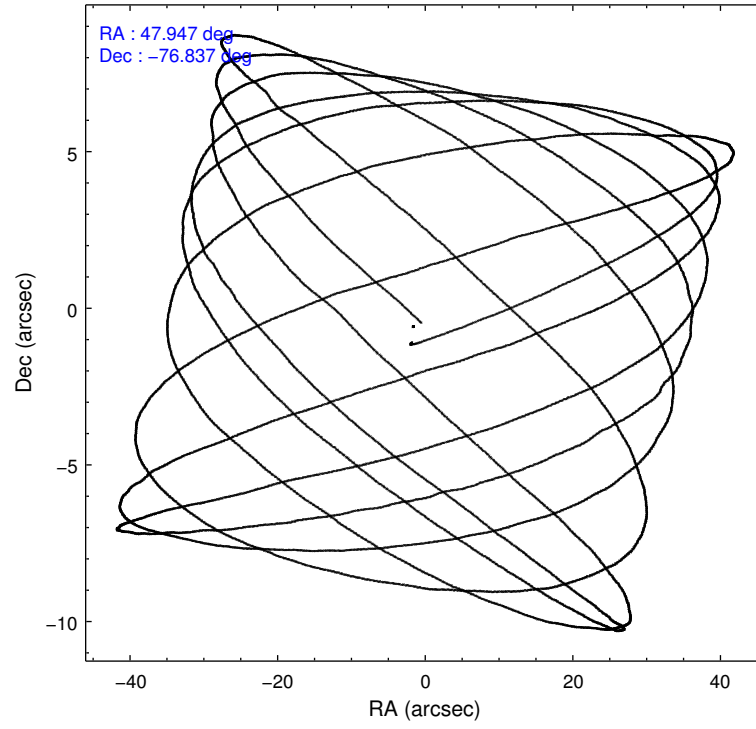
	ccd 3
level 1 events	10682
rejected events	9844
rejected %	92%

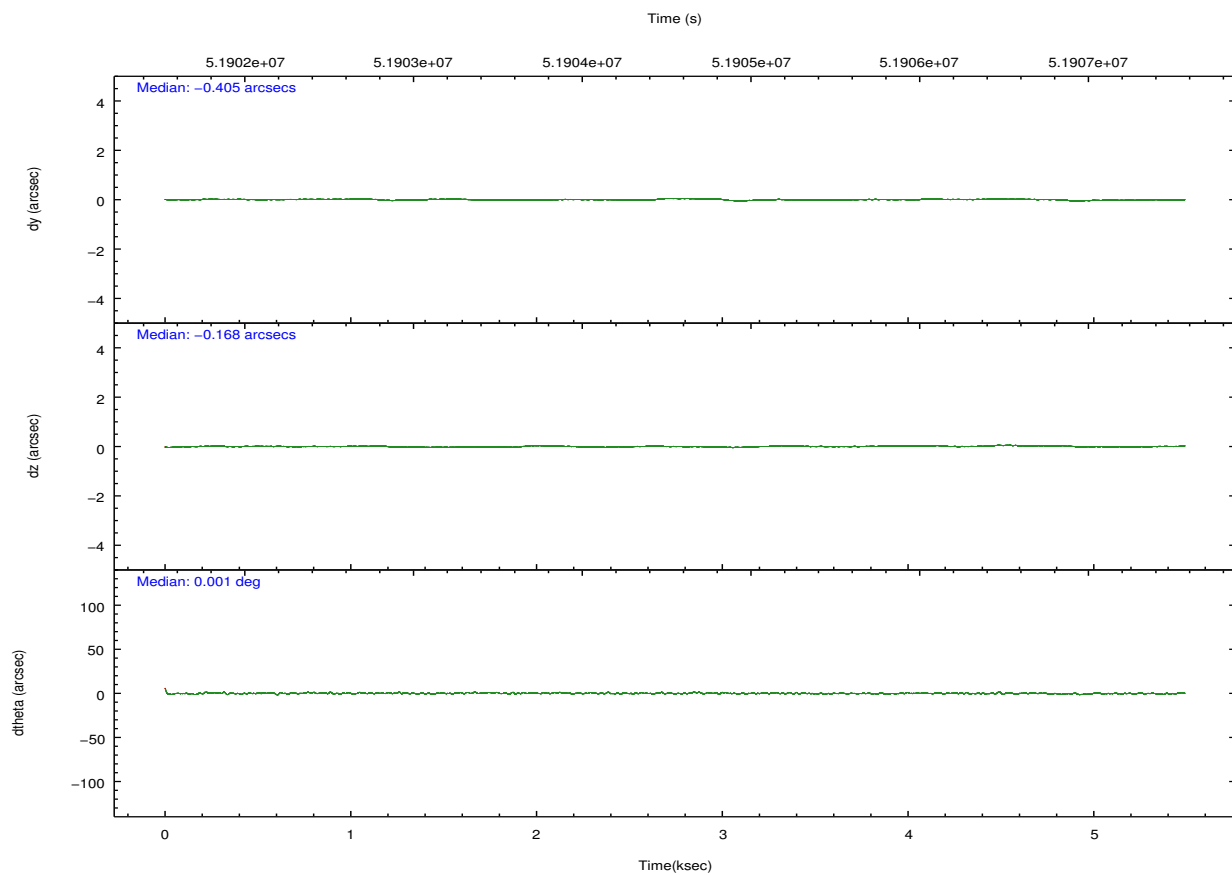
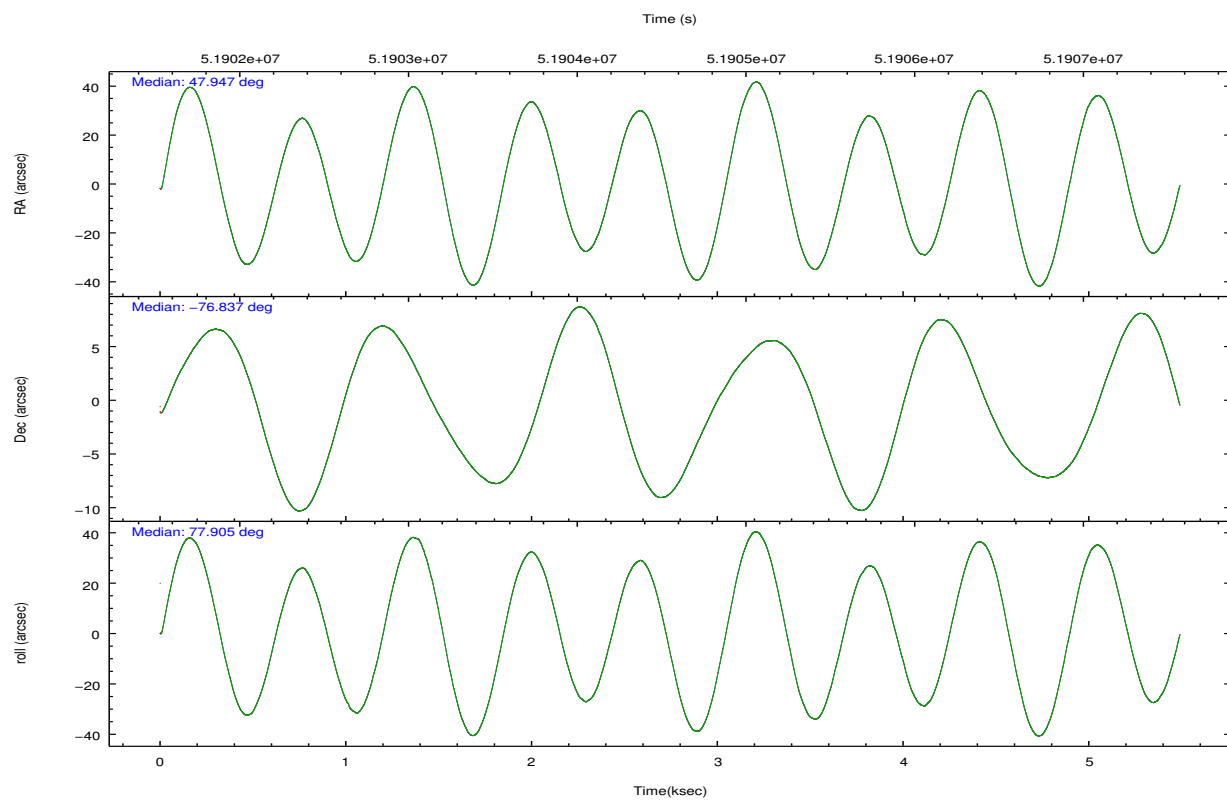
	ccd 3
grade 0 events	196
	1%
grade 1 events	1
	0%
grade 2 events	191
	1%
grade 3 events	169
	1%
grade 4 events	150
	1%
grade 5 events	127
	1%
grade 6 events	132
	1%
grade 7 events	9716
	90%

2.2 Compared Parameters

Parameter	Planned	Actual	Parameter	Planned	Actual
Instrument	ACIS	ACIS	Obspar format version number	6	6
Detector	ACIS-3	ACIS-3	Obspar file type	PREDICTED	ACTUAL
Grating	NONE	NONE	Obspar update status	NONE	UPDATED
Data mode	FAINT	FAINT	Number of optional ACIS chips dropped	0	0
Observation mode	POINTING	POINTING	On-chip summing requested	N	N
Pointing RA	47.980027	47.94555145121308	Subarray requested	CUSTOM	1/8
Pointing Dec	-76.864163	-76.83726901303307	Subarray start row	896	896
Pointing Roll	77.734951	77.91006864002919	Subarray row count	128	128
SIM focus pos (mm)	-1.031285	-0.9788957886083443	Alternating exposures requested	N	N
SIM defocus (mm)	-0.248937	-0.1965475730283577	Primary exposure time	0.000000	0.5
SIM translation stage pos (mm)	-233.592463	-233.5874344608287			
SIM translation stage offset (mm)	0	-0.005018542100998502			
Observation start time	51902294.184000	51901620.789695			
Observation start date	1999-08-24T17:17:10	1999-08-24T17:07:00			
Observation end time	51907294.184000	51907421.264904			
Observation end date	1999-08-24T18:40:30	1999-08-24T18:43:41			
Read mode	TIMED	TIMED			

2.3 Aspect



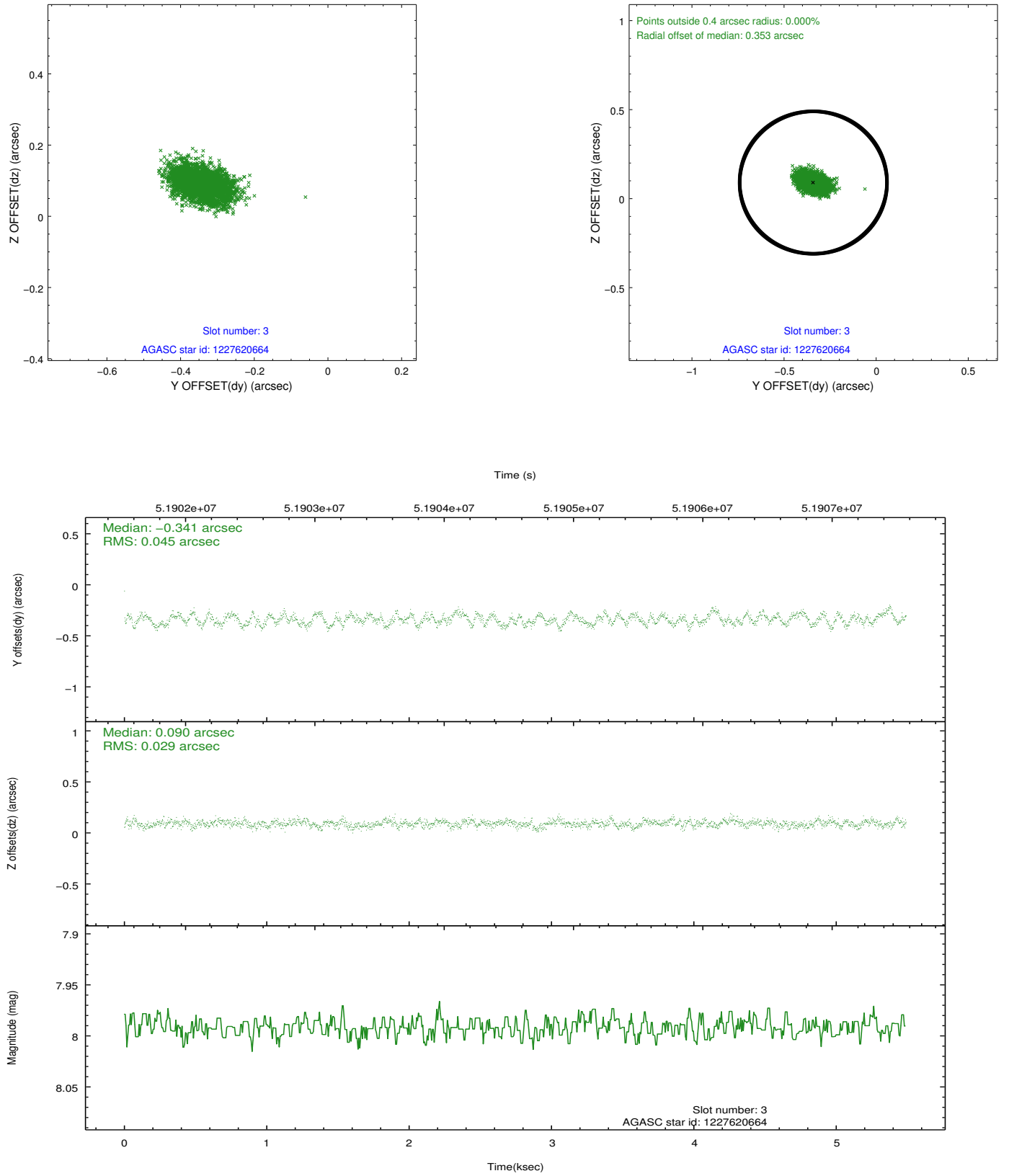


Slot Statistics

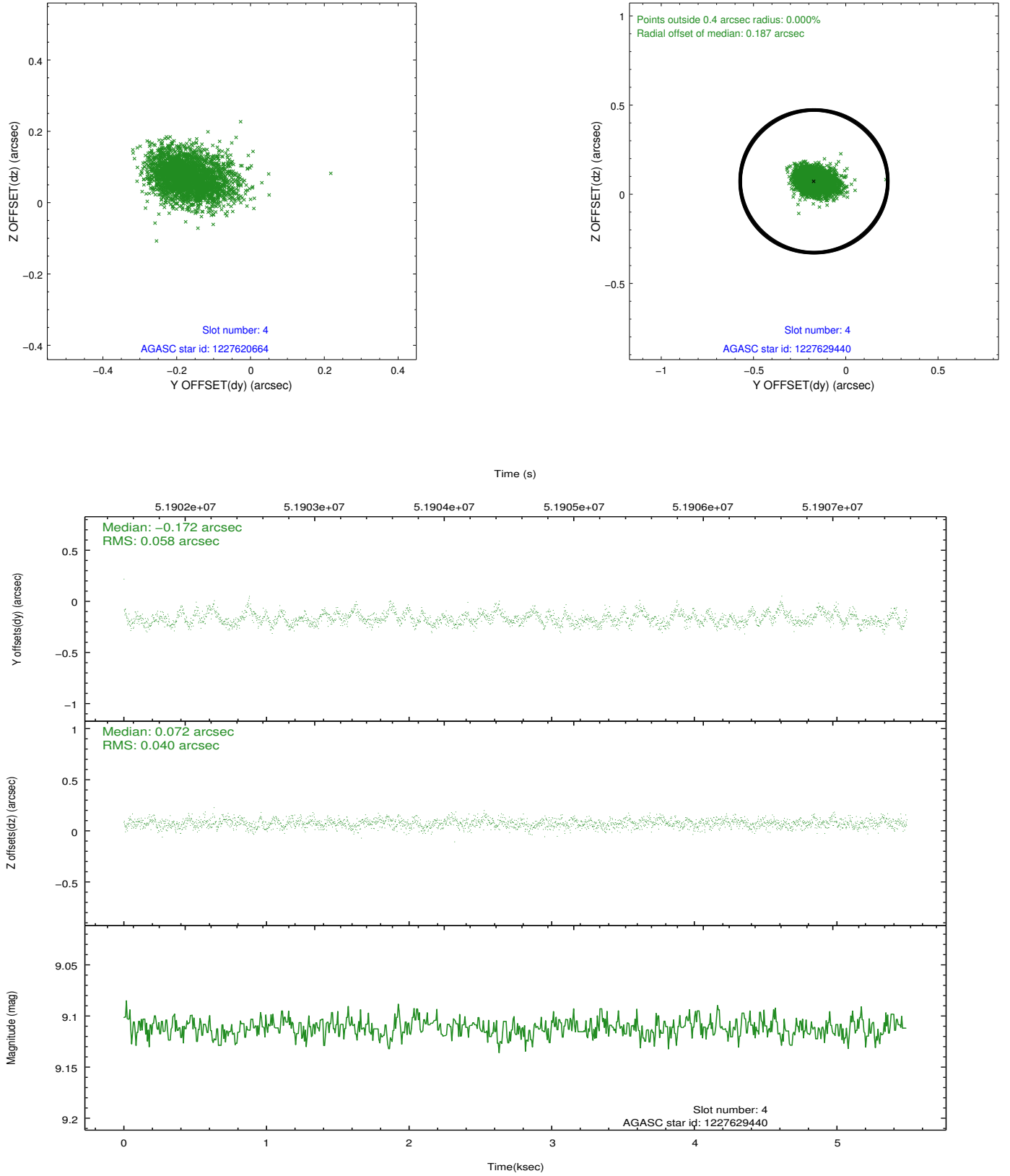
slot	status	id	mag	n_pts	med_dy	med_dz	dr1	dr2	ra	dec	mean_y	mean_z
0	FID	ACIS-I-2	7.20	2679	-0.039	0.048	0.008	0.014	0.000000	0.000000	-753.95	-829.29
1	FID	ACIS-I-4	7.24	2679	0.149	0.017	0.006	0.011	0.000000	0.000000	2160.14	1076.42
2	FID	ACIS-I-5	7.23	2679	-0.211	0.003	0.008	0.014	0.000000	0.000000	-1807.21	1075.01
3	GUIDE	1227620664	7.99	2679	-0.341	0.090	0.057	0.091	46.150563	-77.166043	-1396.61	1194.46
4	GUIDE	1227629440	9.11	2679	-0.172	0.072	0.074	0.124	48.268116	-77.028500	-531.11	-351.97
5	GUIDE	1227104240	9.78	2678	-0.090	0.024	0.091	0.145	48.955462	-76.524572	1360.36	-540.43
6	GUIDE	1227097864	9.92	2674	0.980	-0.275	0.085	0.145	46.669937	-76.763312	113.80	1130.13
7	GUIDE	1227098648	9.62	2676	-0.372	0.088	0.088	0.144	45.933257	-76.269428	1689.29	2158.67

2.4 Star Slots

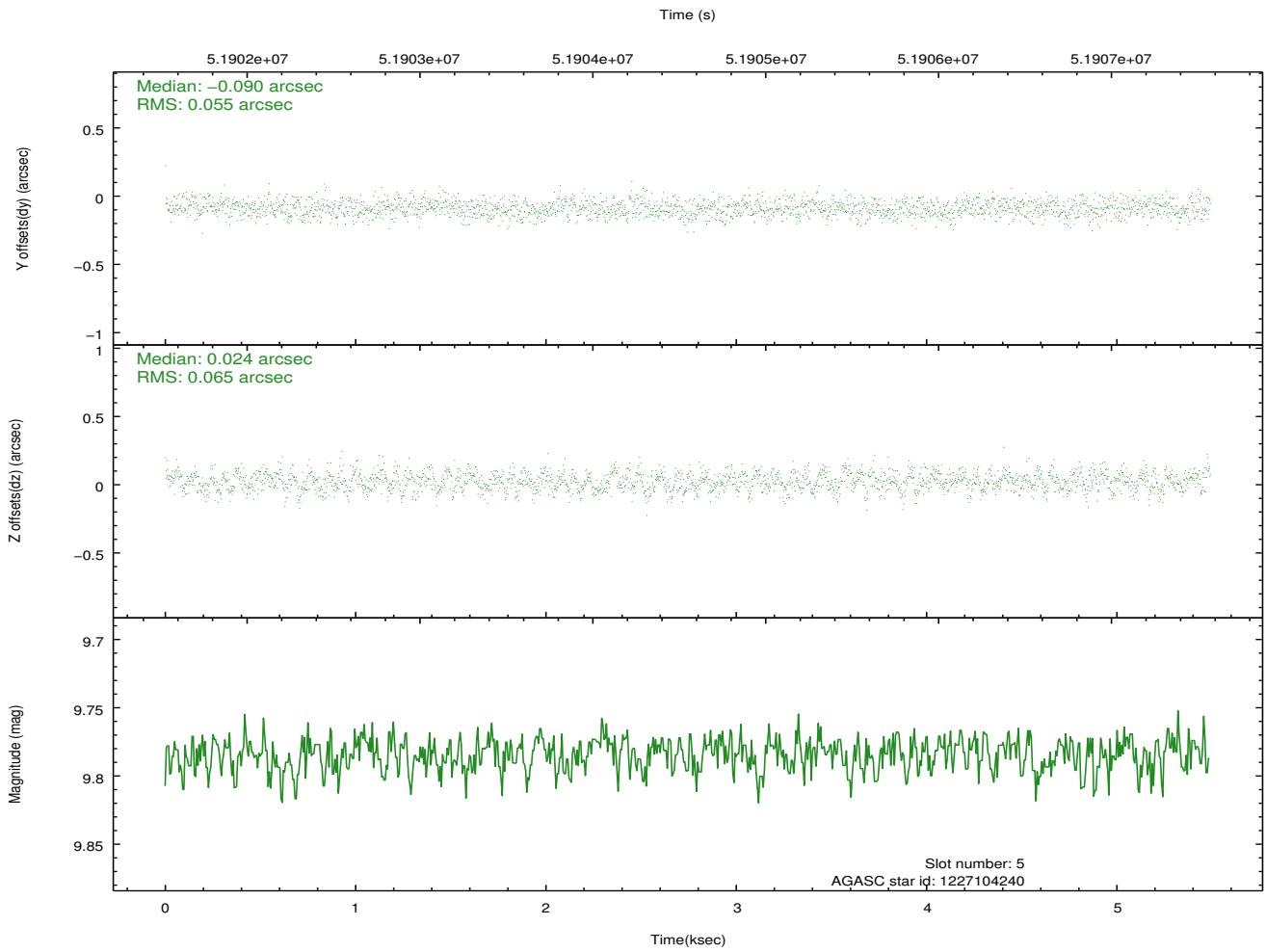
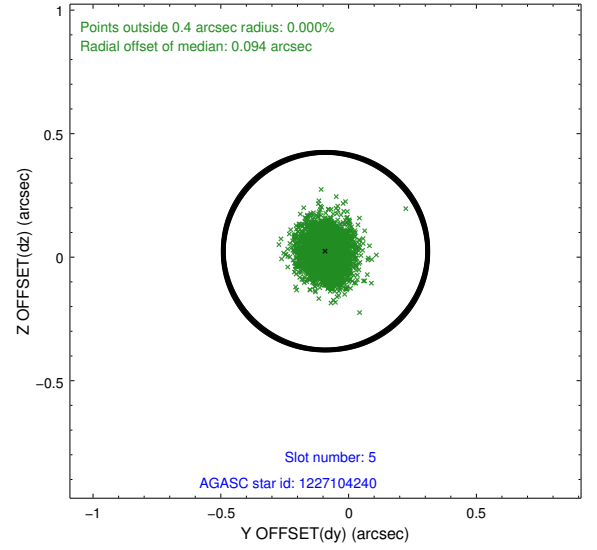
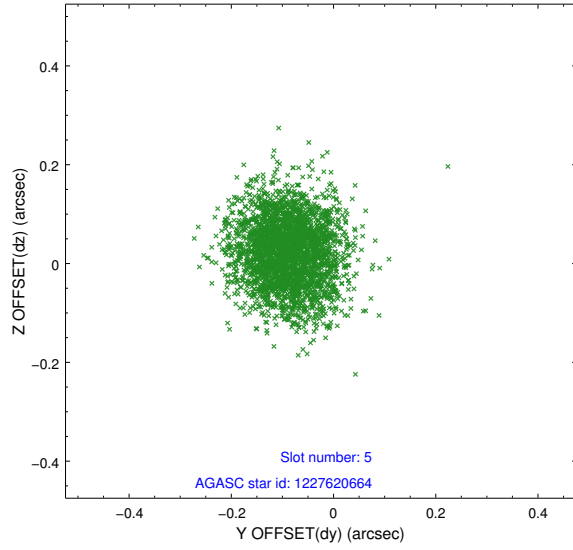
2.4.1 Slot 3



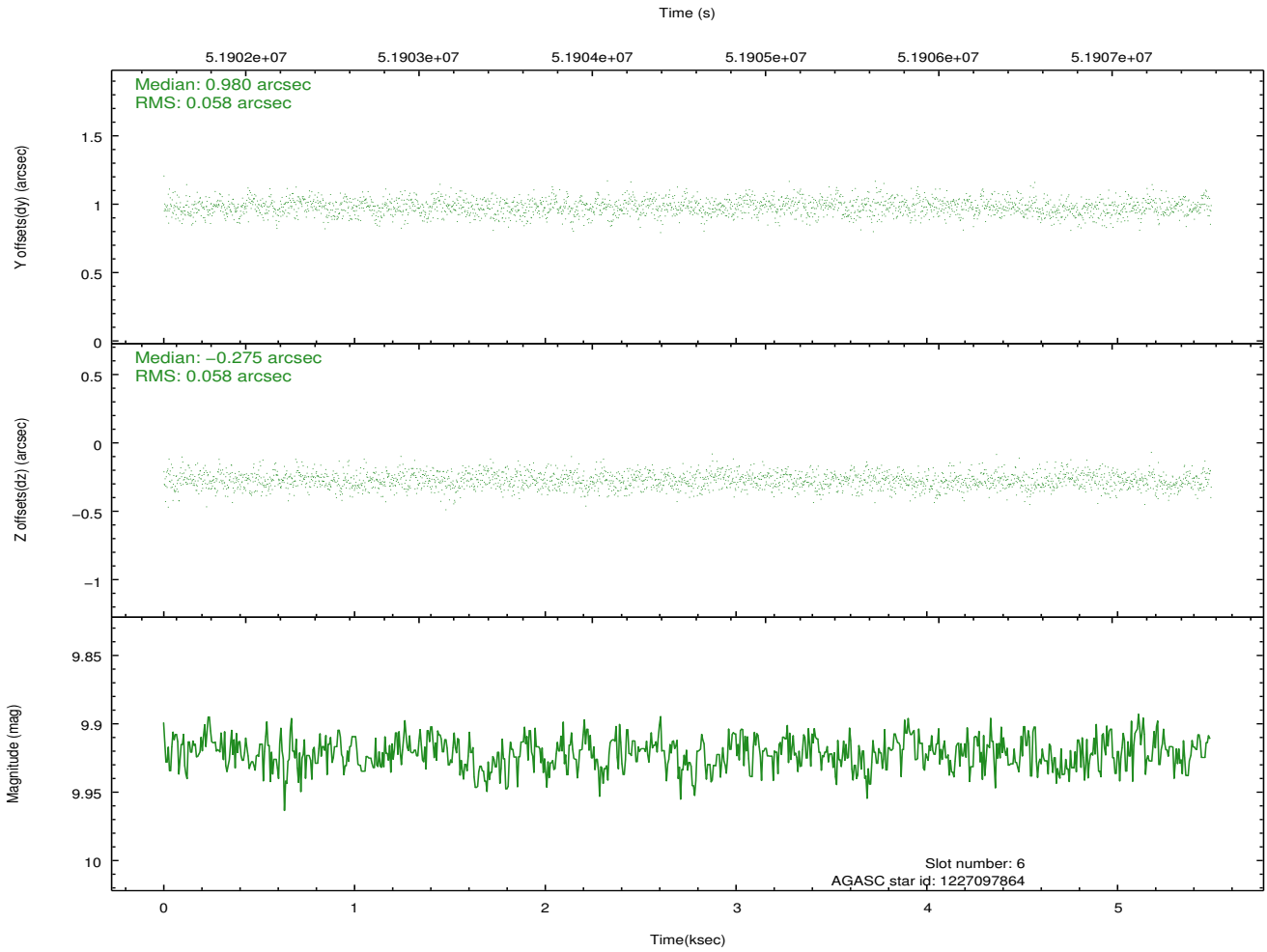
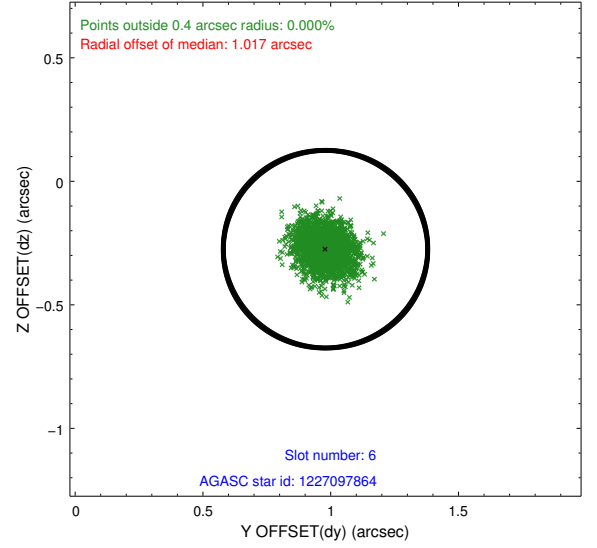
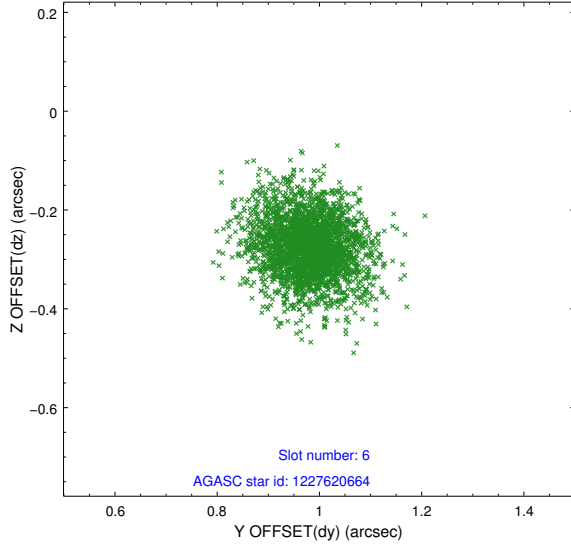
2.4.2 Slot 4



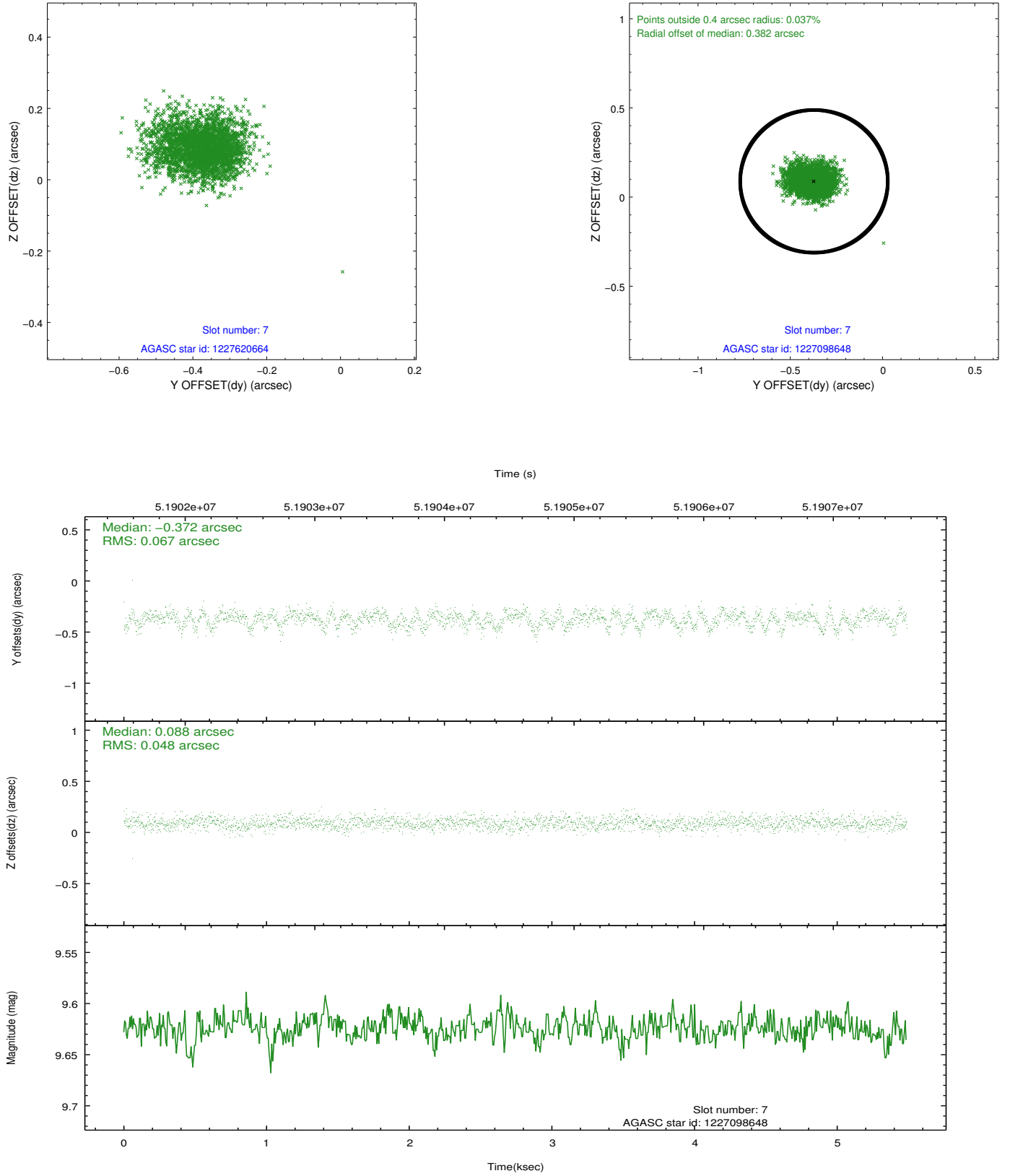
2.4.3 Slot 5



2.4.4 Slot 6

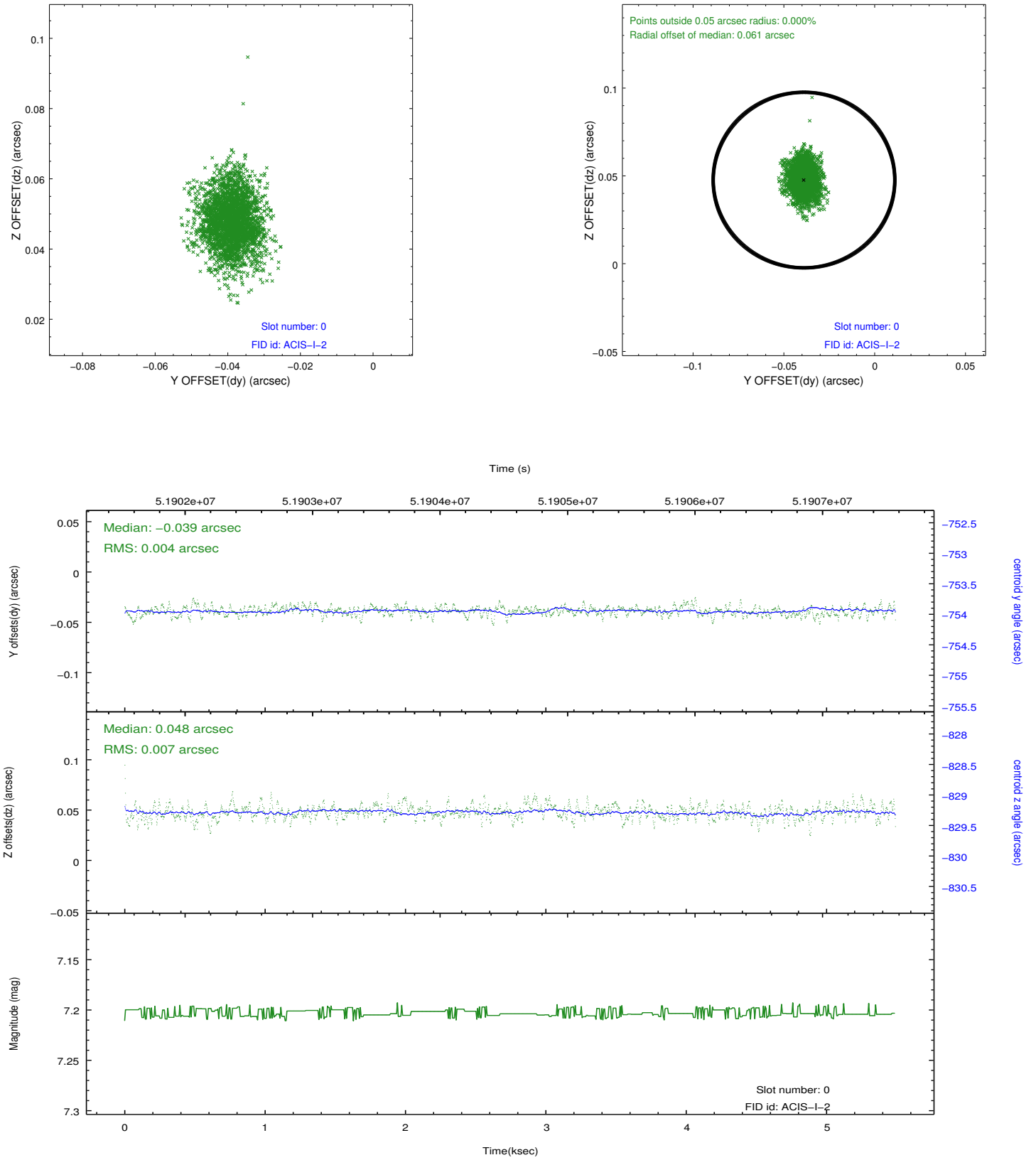


2.4.5 Slot 7

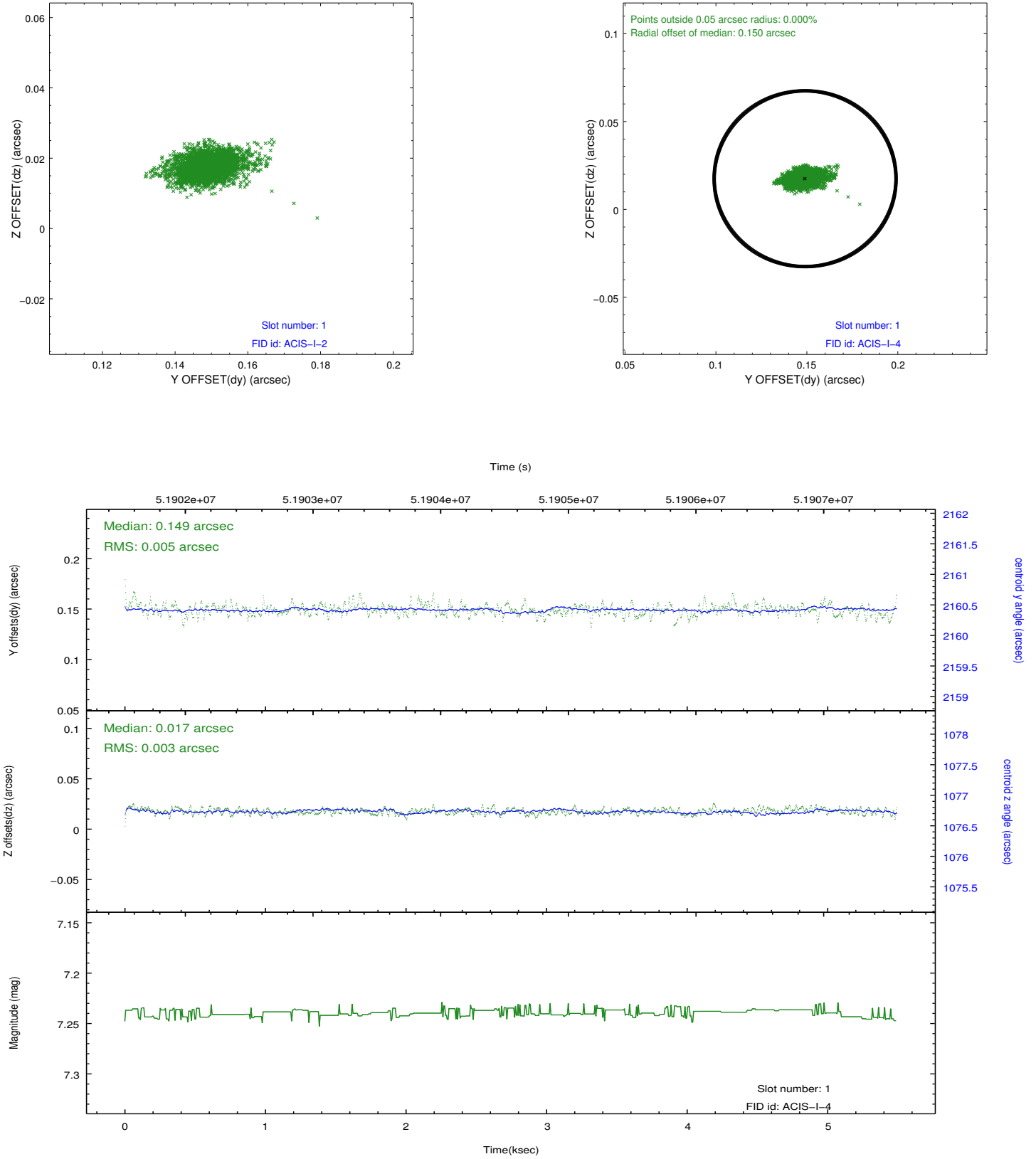


2.5 FID Slots

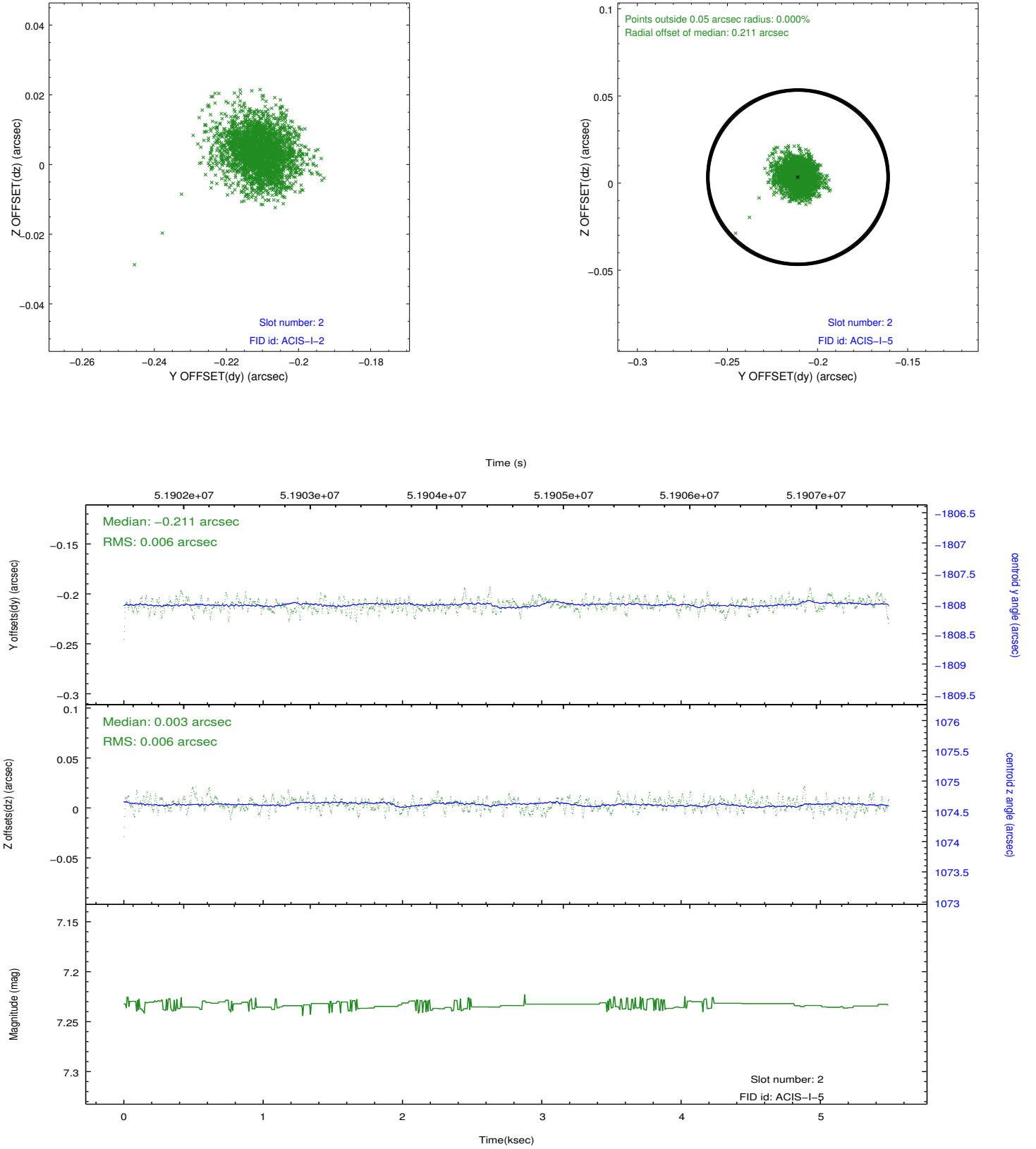
2.5.1 Slot 0



2.5.2 Slot 1



2.5.3 Slot 2



3 Point Sources

A Summary

A.1 Status

V&V Scientist	Joy Nichols
V&V Date (YYYY-MM-DD)	2010.01.21
V&V Edition	1
V&V Disposition and Status	OK
V&V Charge Time	4.759

A.2 Comments

There was an incorrect boresight alignment calculation for this obsid.
The pointing is therefore inaccurate and not of the intended field.

=====

Charge time for this ObsId remains at previous value of 4.759 ksec,
although
with the current processing the charge time would have been 4.853 ksec.

=====

Focal plane temperature is approximately -100 C degrees during this
observation. ACIS has not been calibrated at this temperature, because
the focal plan temperature of -119.7 C degrees became the standard
shortly

after the start of the mission. Both front and back illuminated chips
are affected.

The ACIS spectral response calibration is less accurate at these warmer
temperatures than it is at -119.7 C. Users whose science objectives
depend

on the most accurate spectral response (ie: fitting line-rich spectra)
may

notice an effect. Users whose science objectives do not depend on the
most accurate spectral response should not notice an effect.

This reprocessing

of the data applies no CTI correction because none is available
for this temperature.