

V&V Reference Report

L2 ASCDS Version : 8.1.2

Observation 1280 - L2 Version 3

Chandra X-Ray Center

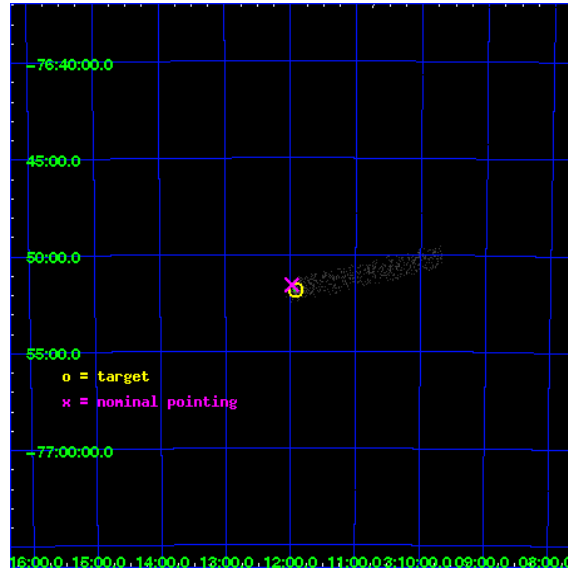
L2 Processing Date : Dec 17 2009

Contents

1	Front	2
2	OBI	3
2.1	OBI	3
2.1.1	Images	3
2.1.2	Bias	3
2.1.3	Parameters	4
2.1.4	Events	4
2.2	Compared Parameters	5
2.3	Aspect	6
2.4	Star Slots	9
2.4.1	Slot 3	9
2.4.2	Slot 5	10
2.4.3	Slot 6	11
2.4.4	Slot 7	12
2.5	FID Slots	13
2.5.1	Slot 0	13
2.5.2	Slot 1	14
2.5.3	Slot 2	15
3	Point Sources	16
A	Summary	17
A.1	Status	17
A.2	Comments	17

1 Front

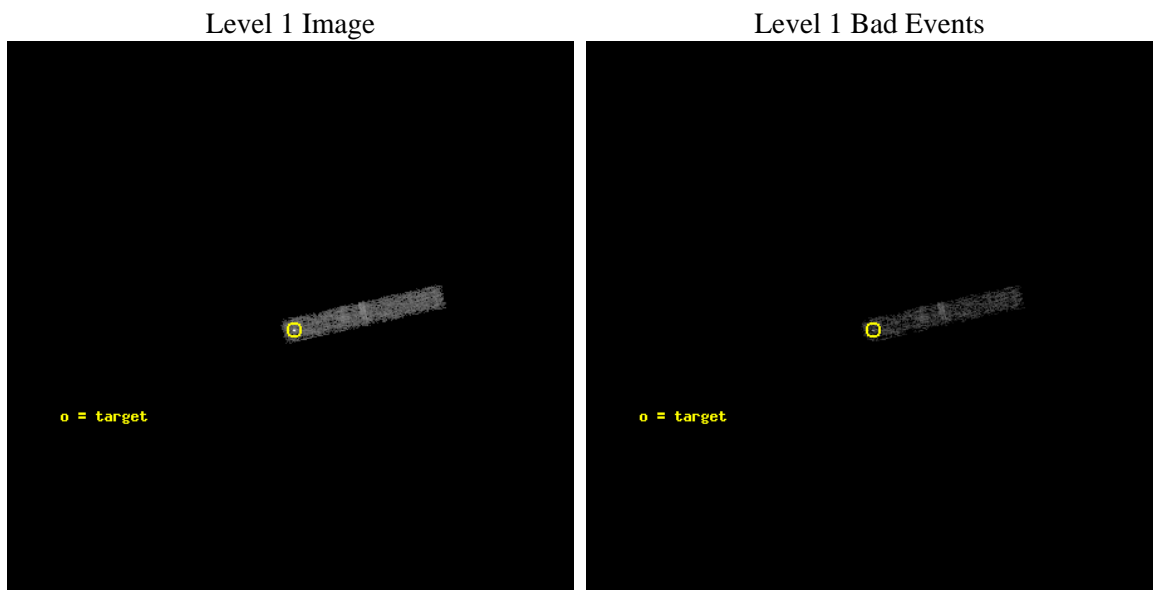
seq_num	780230	Sequence number
obs_id	1280	Observation id
title	Bias observation	Proposal title
observer	Dr. CXC Calibration	Principal investigator
object	PKS0312-770	Source name
dtcycle	0	
cycle	P	events from which exps? Prim/Second/Both
ra_targ	47.98	Observer's specified target RA
dec_targ	-76.864167	Observer's specified target Dec
ra_nom	47.994917757585	Nominal RA
dec_nom	-76.859516633023	Nominal Dec
roll_nom	77.514401328062	Nominal Roll
revision	3	Processing version of data
ontime	4856.8935504928	Sum of GTIs [s]
livetime	4488.479179444	Livetime [s]
ontime3	4856.8935504928	Sum of GTIs [s]
l2events	3569	Number of level 2 events



2 OBI

2.1 OBI

2.1.1 Images



2.1.2 Bias

Chip 3



2.1.3 Parameters

obi_num	0	Obi number	sched_exp_time	5000.000000	Scheduled observation exposure time
ascdsver	8.1.2	ASCDS version number	ontime	4856.8935504928	Sum of GTIs [s]
caldbver	4.1.4	 	ontime3	4856.8935504928	Sum of GTIs [s]
date	2009-12-17T07:10:29	Date and time of file creation	l1events	13396	Number of level 1 events
revision	3	Processing version of data			

2.1.4 Events

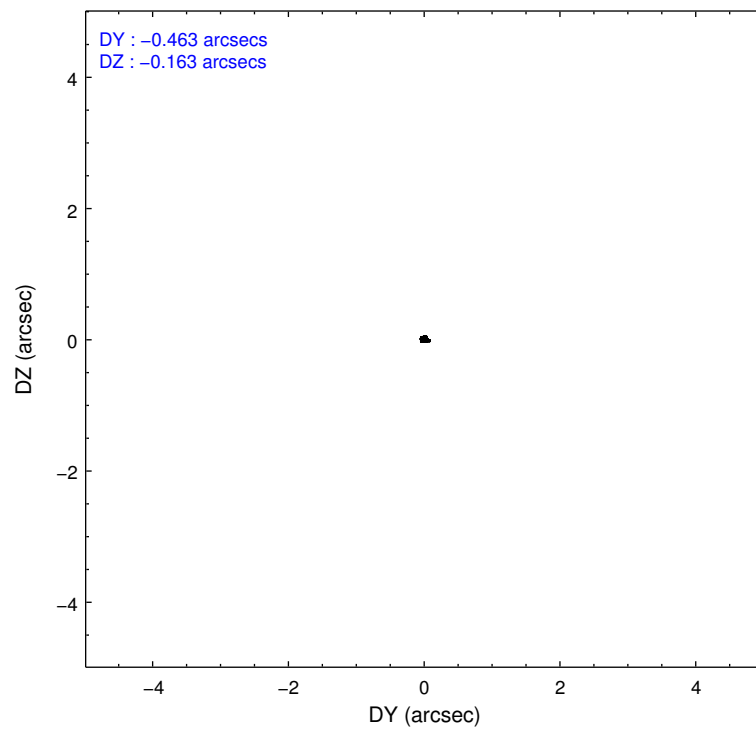
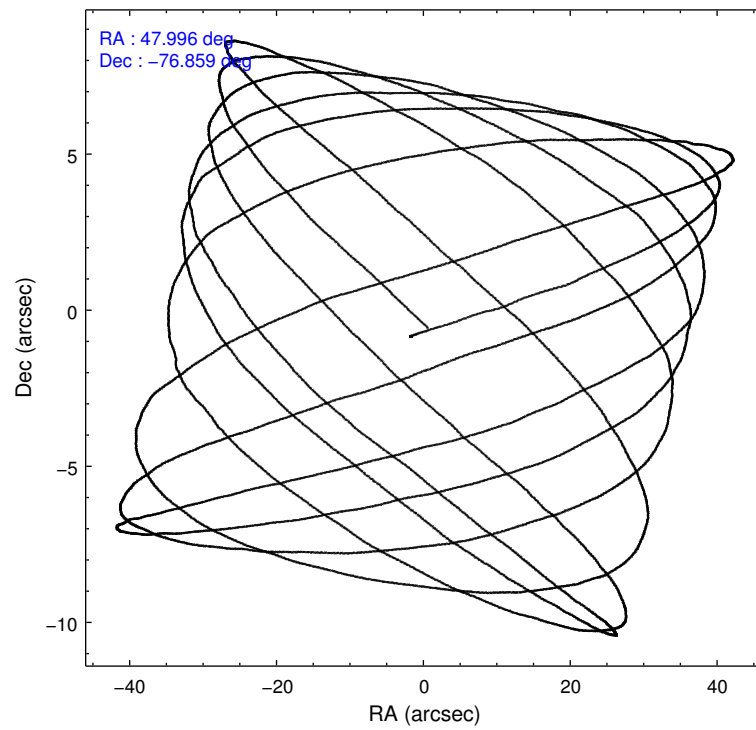
	ccd 3
level 1 events	13396
rejected events	9611
rejected %	71%

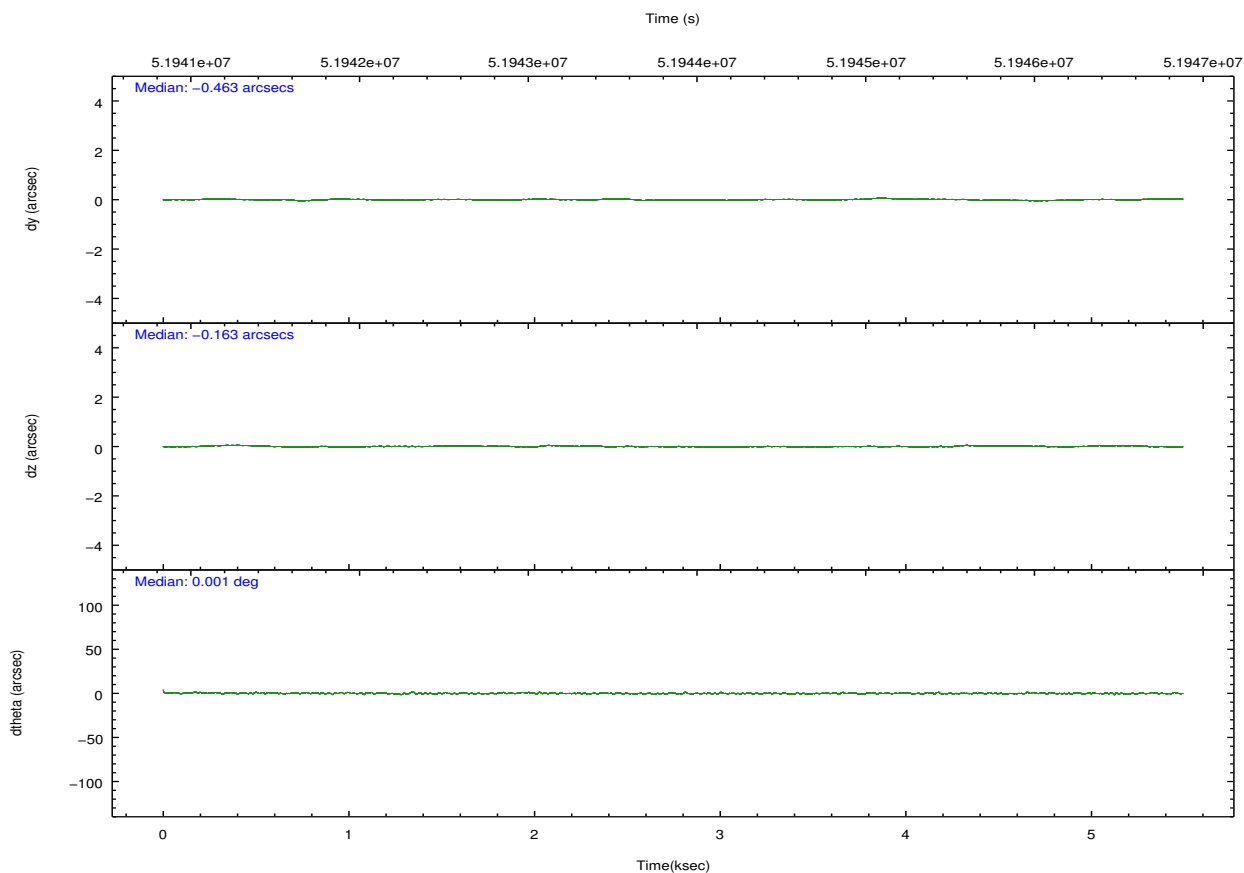
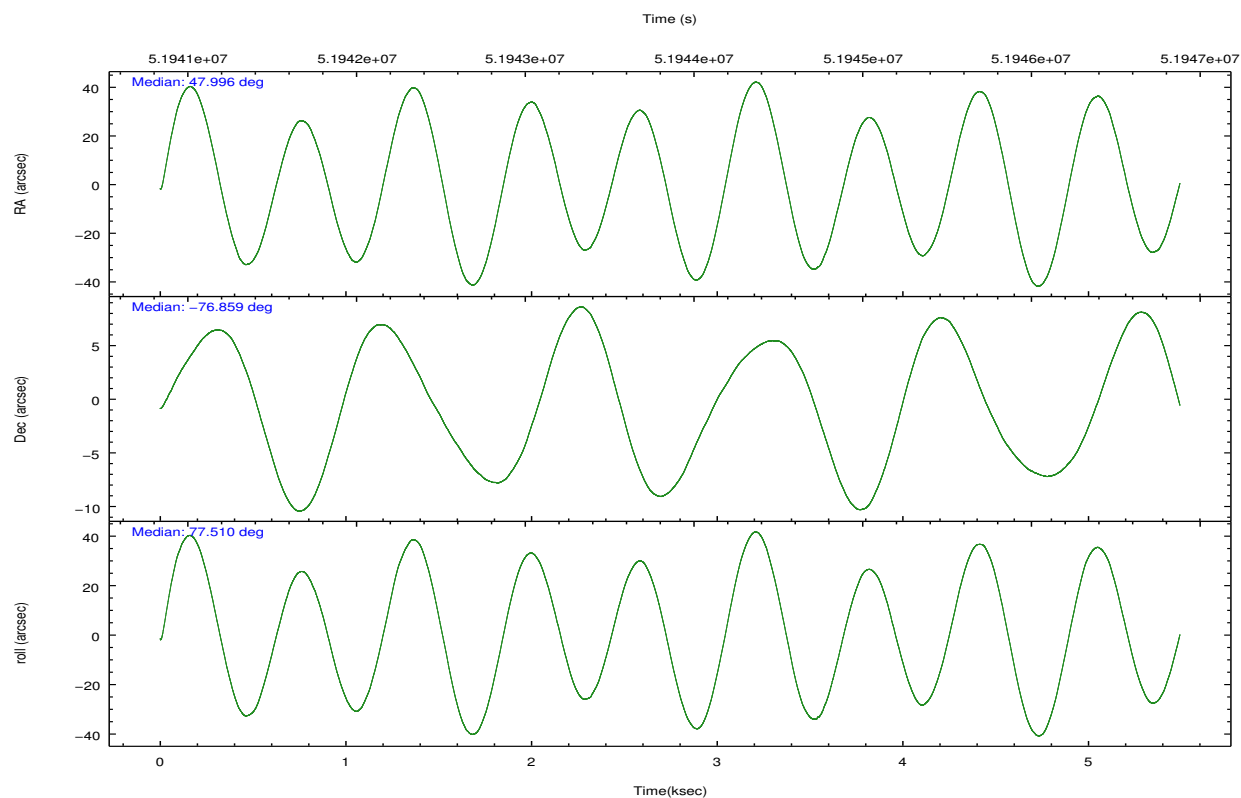
	ccd 3
grade 0 events	2483
	18%
grade 1 events	82
	0%
grade 2 events	515
	3%
grade 3 events	266
	1%
grade 4 events	260
	1%
grade 5 events	181
	1%
grade 6 events	263
	1%
grade 7 events	9346
	69%

2.2 Compared Parameters

Parameter	Planned	Actual	Parameter	Planned	Actual
Instrument	ACIS	ACIS	Obspar format version number	6	6
Detector	ACIS-3	ACIS-3	Obspar file type	PREDICTED	ACTUAL
Grating	NONE	NONE	Obspar update status	NONE	UPDATED
Data mode	FAINT	FAINT	Number of optional ACIS chips dropped	0	0
Observation mode	POINTING	POINTING	On-chip summing requested	N	N
Pointing RA	48.028620	47.99491775758539	Subarray requested	CUSTOM	1/8
Pointing Dec	-76.886493	-76.85951663302333	Subarray start row	896	896
Pointing Roll	77.338534	77.51440132806238	Subarray row count	128	128
SIM focus pos (mm)	-1.282348	-1.21938489376697	Alternating exposures requested	N	N
SIM defocus (mm)	-0.5	-0.4370366781869839	Primary exposure time	0.000000	0.5
SIM translation stage pos (mm)	-233.592463	-233.5874344608287			
SIM translation stage offset (mm)	0	-0.005018542100998502			
Observation start time	51941606.184000	51940932.616109			
Observation start date	1999-08-25T04:12:22	1999-08-25T04:02:12			
Observation end time	51946606.184000	51947203.566335			
Observation end date	1999-08-25T05:35:42	1999-08-25T05:46:43			
Read mode	TIMED	TIMED			

2.3 Aspect



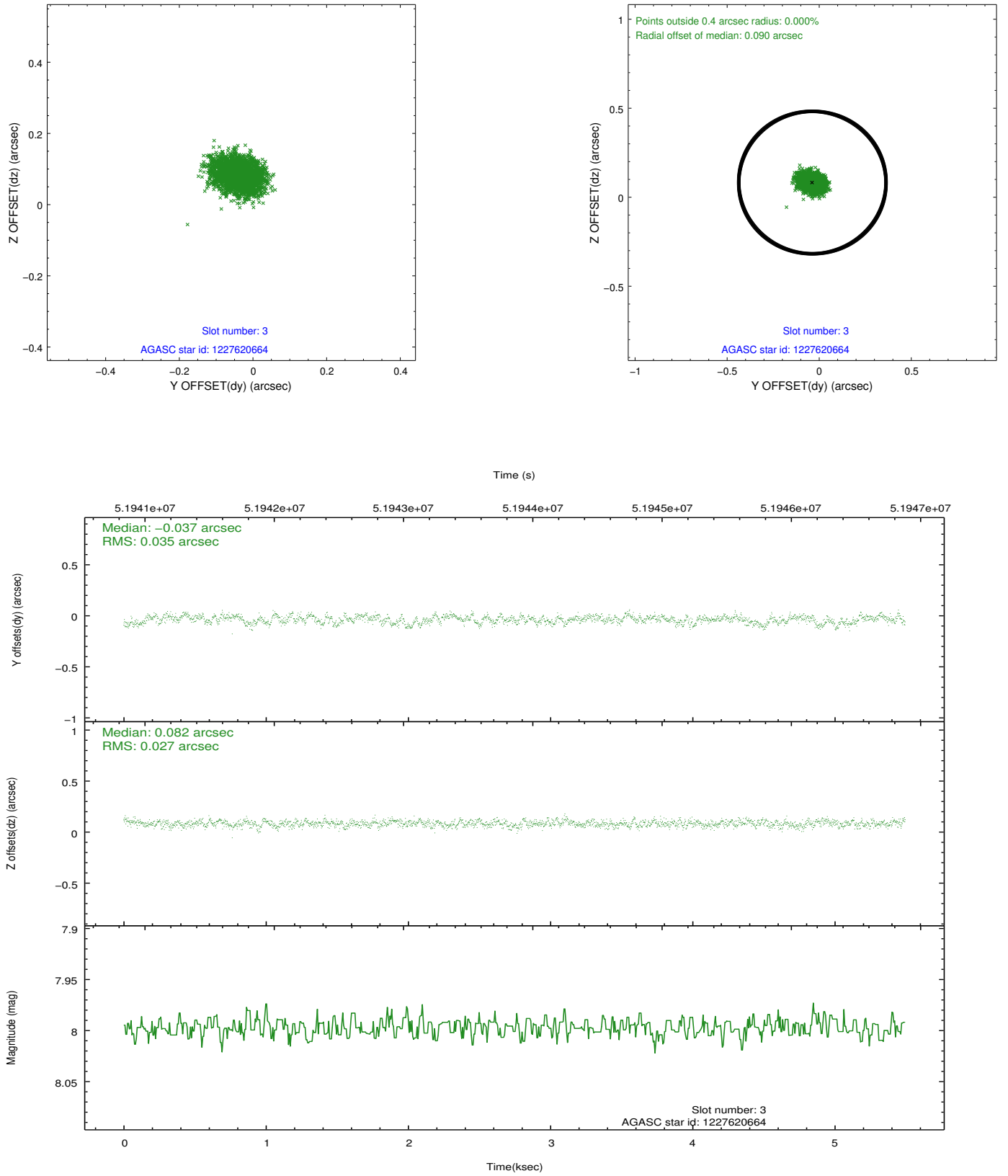


Slot Statistics

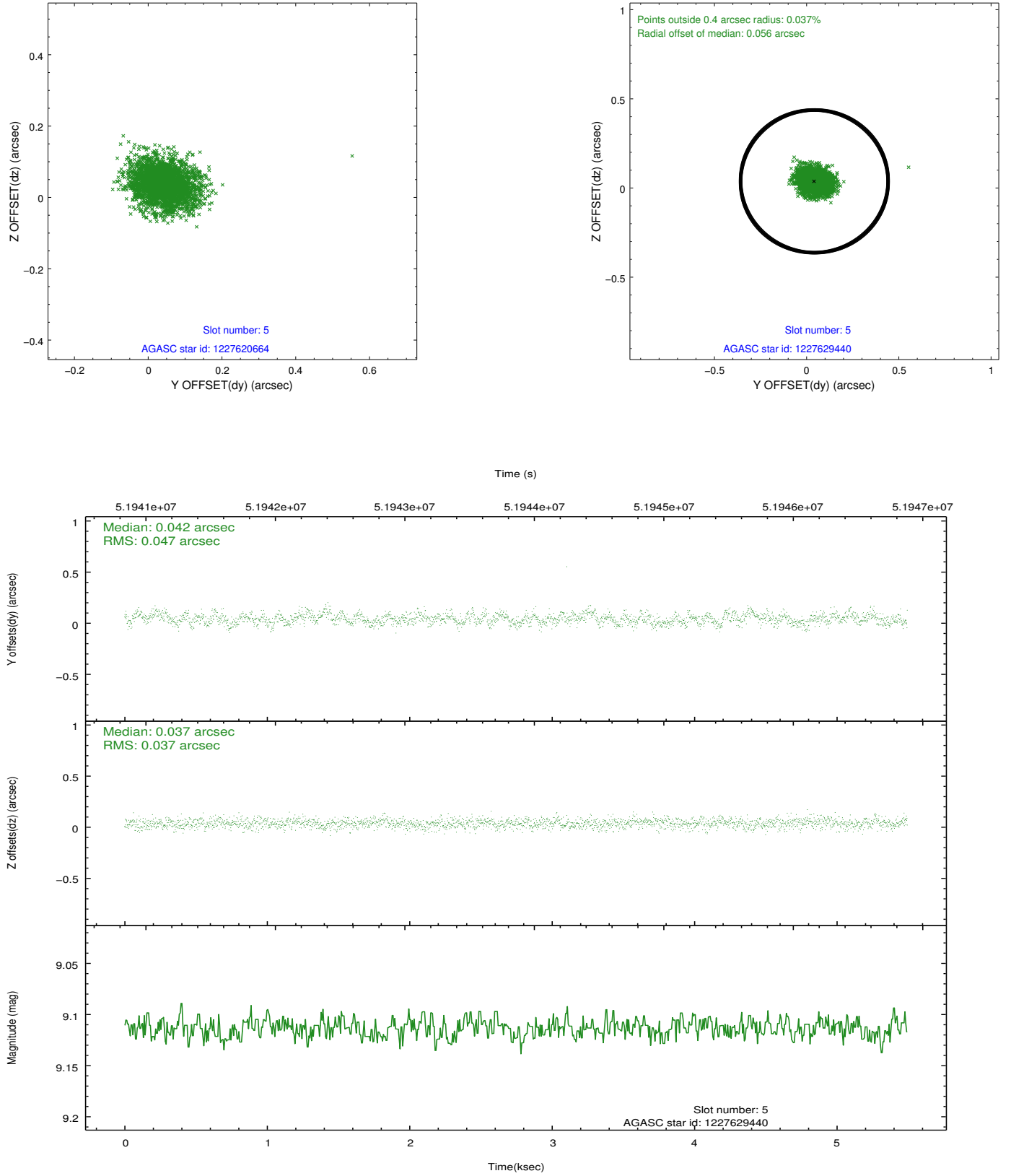
slot	status	id	mag	n_pts	med_dy	med_dz	dr1	dr2	ra	dec	mean_y	mean_z
0	FID	ACIS-I-2	7.21	2681	-0.039	0.043	0.009	0.014	0.000000	0.000000	-753.87	-829.28
1	FID	ACIS-I-4	7.23	2681	0.159	0.019	0.006	0.010	0.000000	0.000000	2160.15	1076.40
2	FID	ACIS-I-5	7.23	2681	-0.220	0.007	0.008	0.013	0.000000	0.000000	-1807.12	1074.98
3	GUIDE	1227620664	8.00	2681	-0.037	0.082	0.048	0.077	46.150563	-77.166043	-1335.10	1239.80
4	UNUSED		0.00	0	0.000	0.000	0.000	0.000	0.000000	0.000000	0.00	0.00
5	GUIDE	1227629440	9.11	2680	0.042	0.037	0.063	0.104	48.268116	-77.028500	-457.74	-299.90
6	GUIDE	1227104240	9.80	2679	0.092	-0.075	0.098	0.157	48.955462	-76.524572	1435.09	-473.80
7	GUIDE	1227098648	9.63	2680	-0.090	-0.042	0.082	0.133	45.933257	-76.269428	1743.74	2227.11

2.4 Star Slots

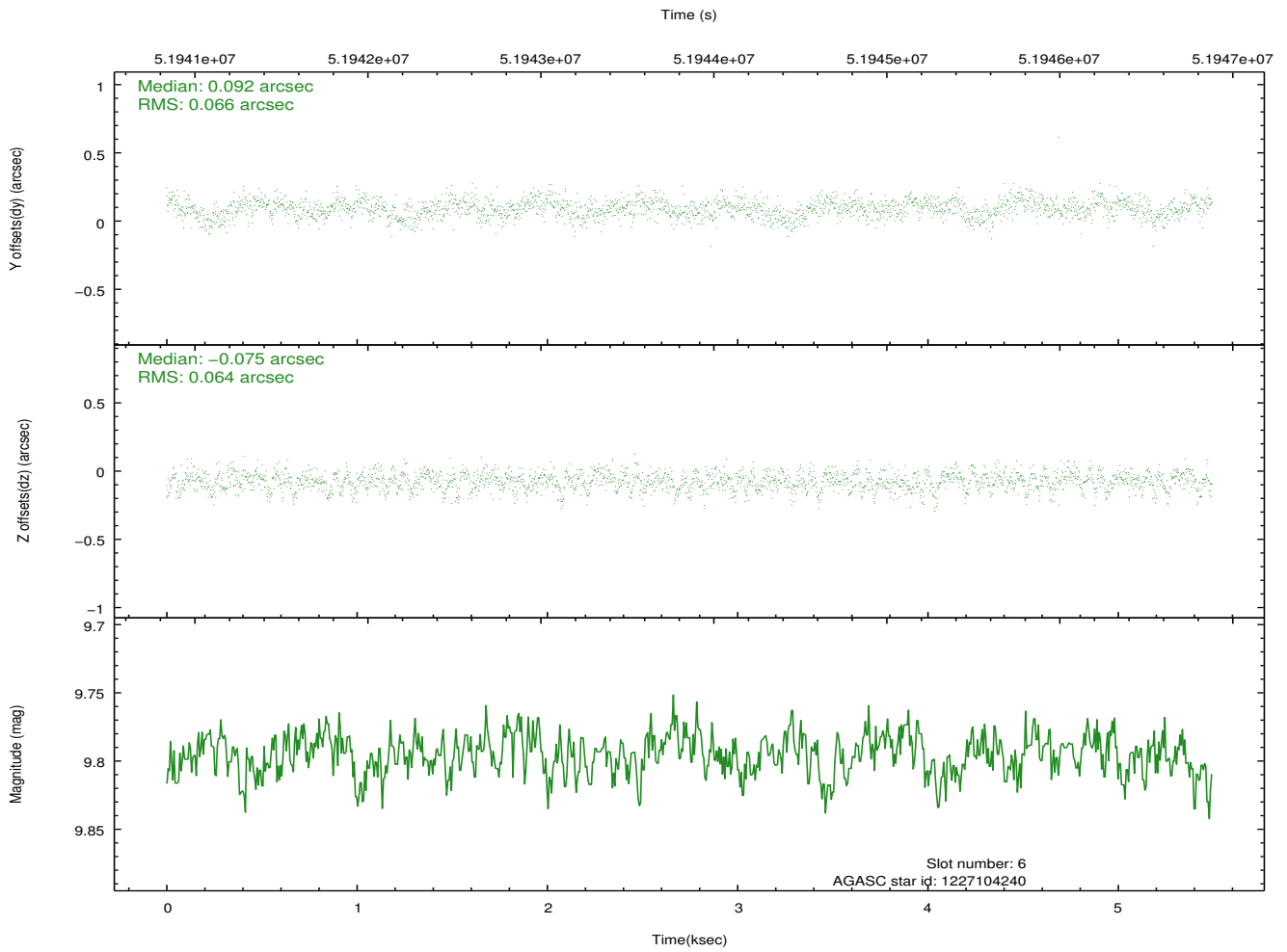
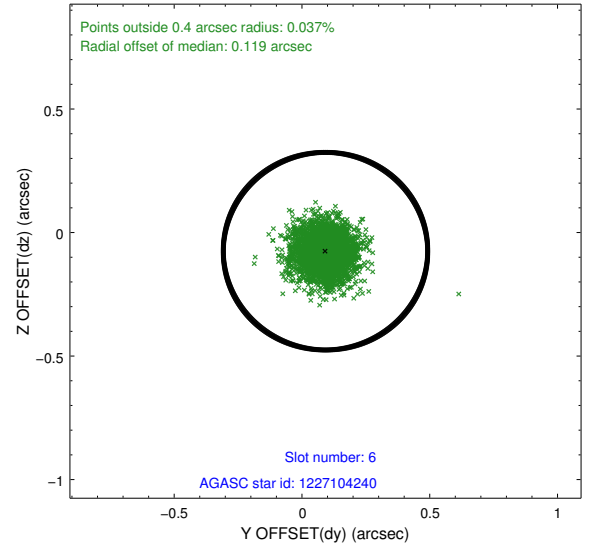
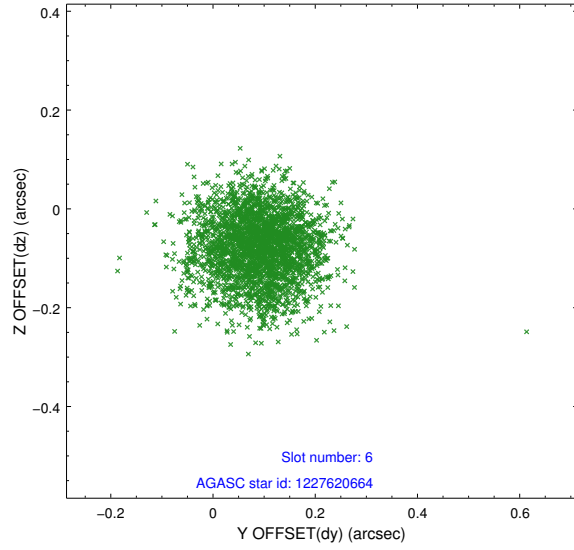
2.4.1 Slot 3



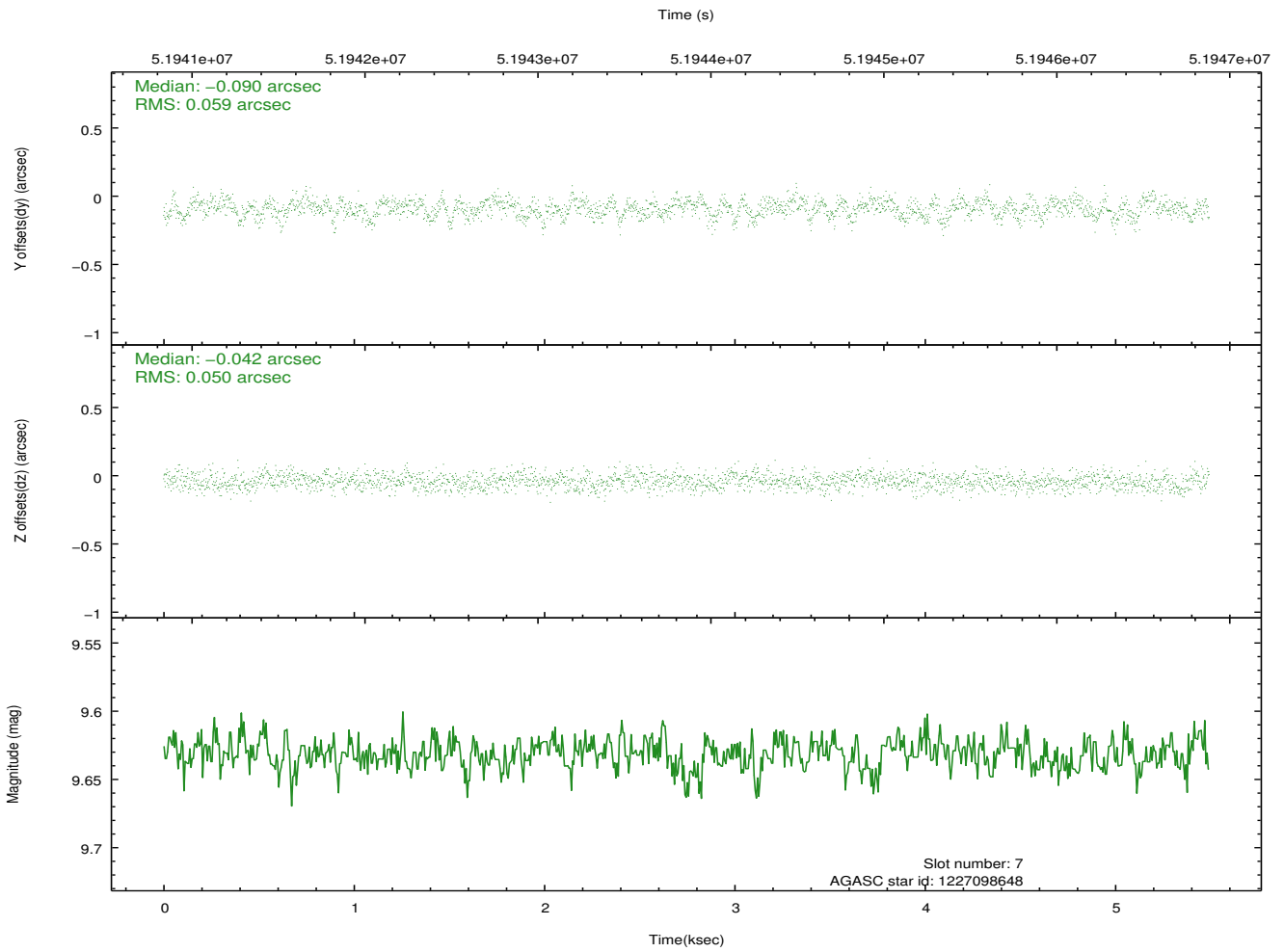
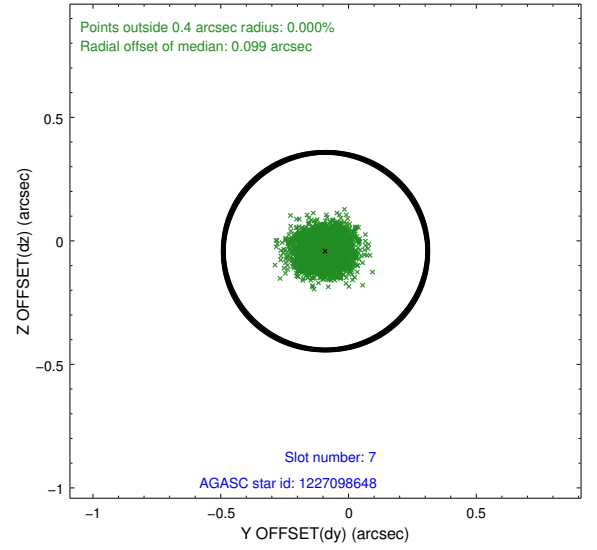
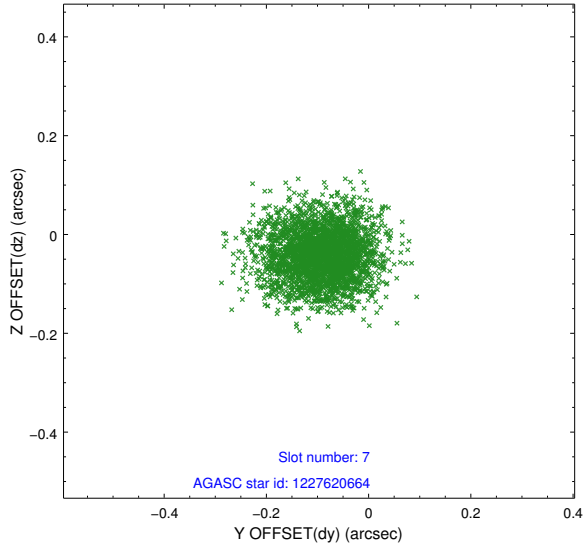
2.4.2 Slot 5



2.4.3 Slot 6

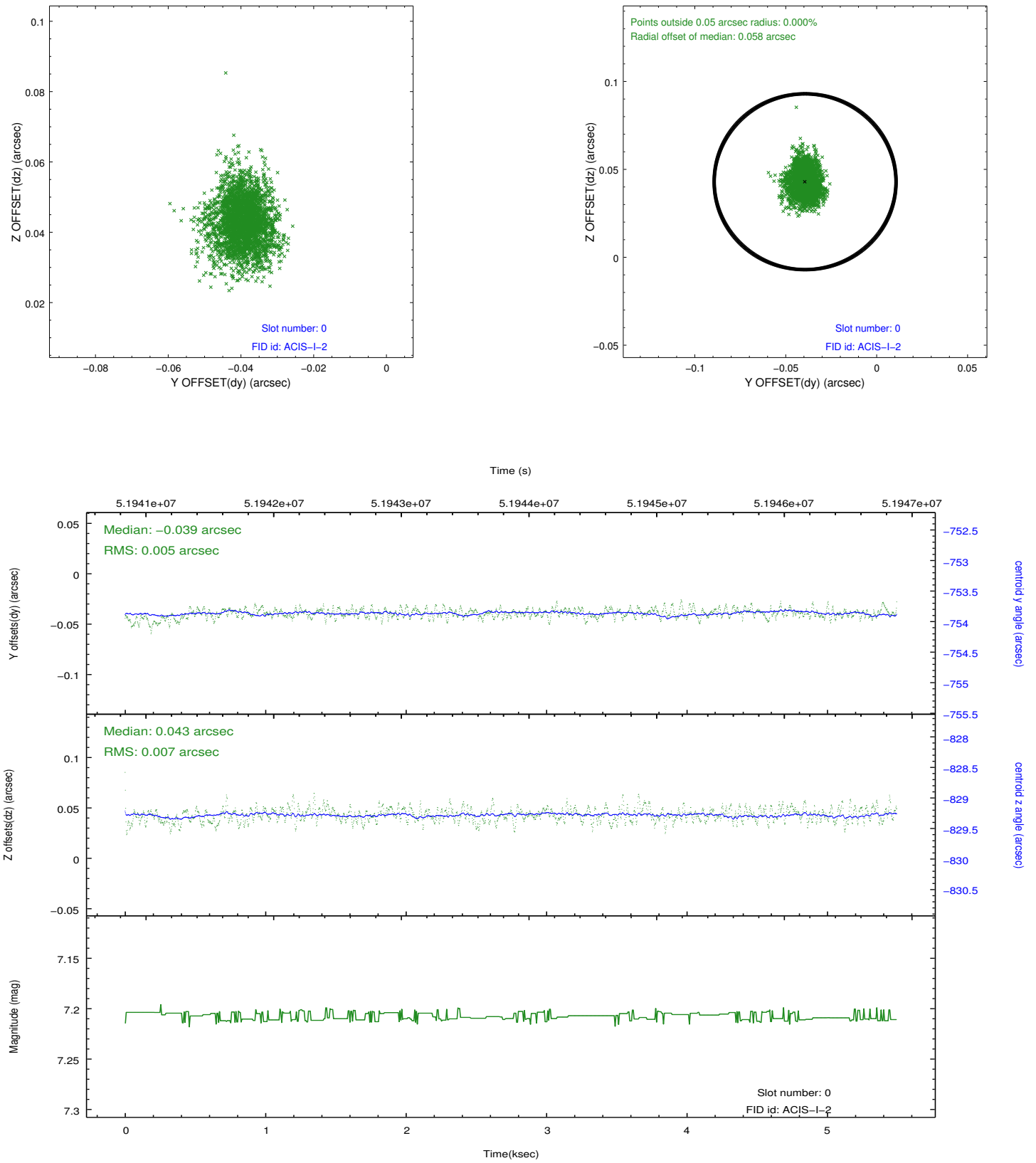


2.4.4 Slot 7

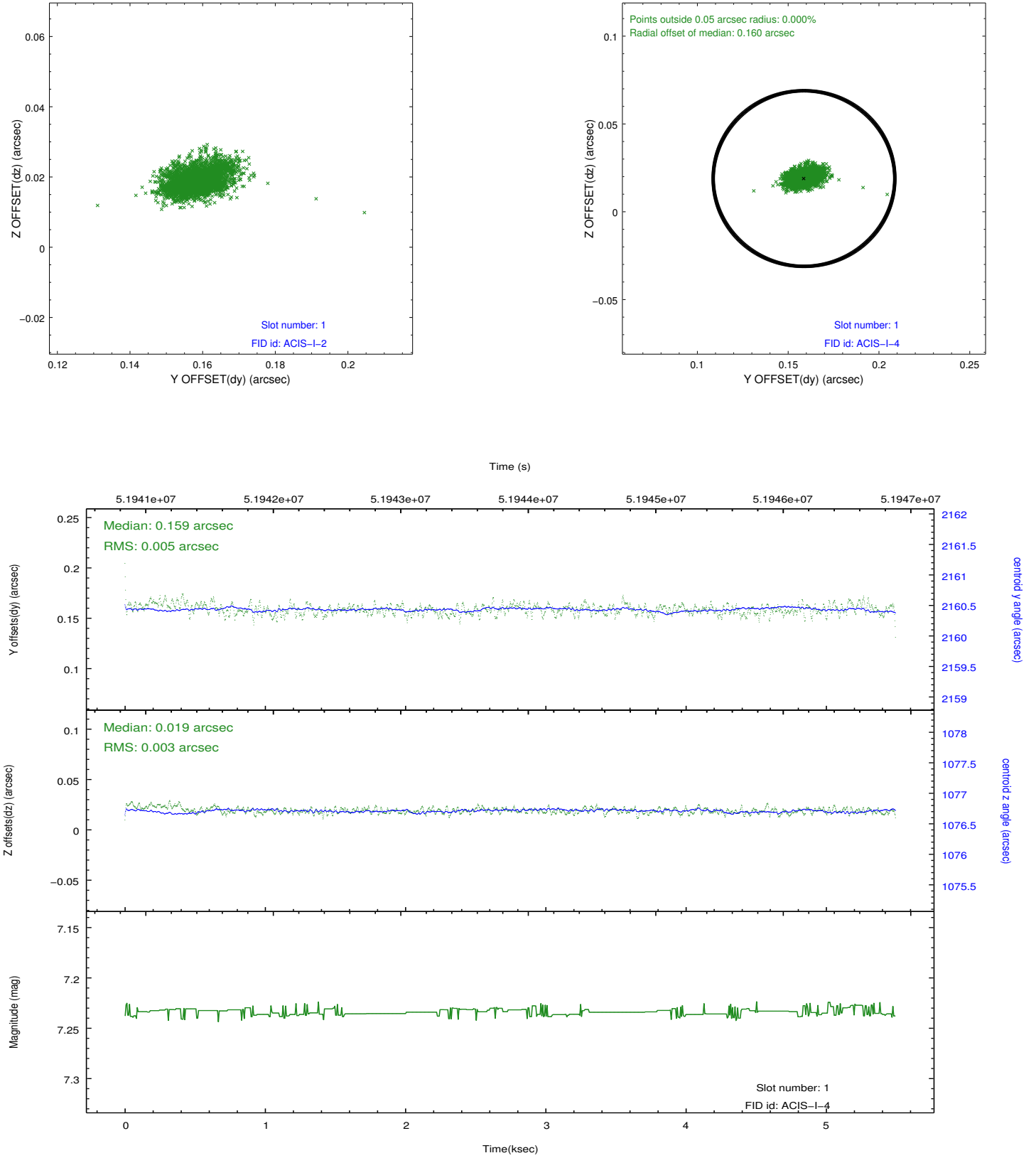


2.5 FID Slots

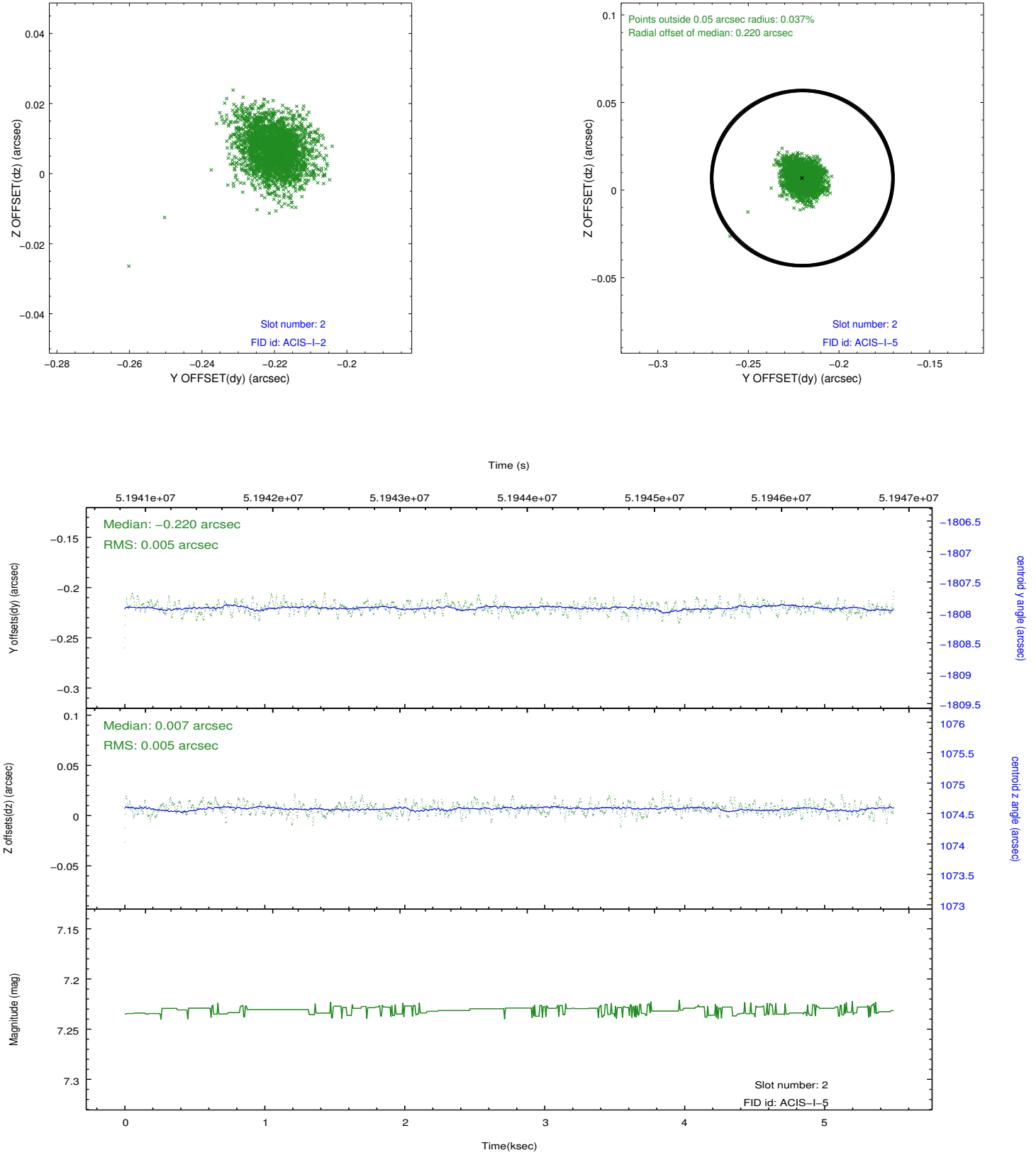
2.5.1 Slot 0



2.5.2 Slot 1



2.5.3 Slot 2



3 Point Sources

A Summary

A.1 Status

V&V Scientist	Joy Nichols
V&V Date (YYYY-MM-DD)	2010.08.12
V&V Edition	1
V&V Disposition and Status	OK
V&V Charge Time	4.857

A.2 Comments

ACIS-I focus plate.

==

Slot 4 was not utilized in this observation.

===

The focal plane temperature is approximately -100 C during this observation. This reprocessing of the data applies no CTI correction because none is available for this temperature at present.

The ACIS CTI correction has not been calibrated at this temperature, because it was early in the mission, and ACIS had not yet been lowered to the standard -119.7 C. Both front and back illuminated chips are affected. However a T_GAIN correction has been applied to the BI chips (ACIS-5 and ACIS-7) data included here.

The ACIS spectral response calibration is less accurate at these warmer temperatures than it is at -119.7 C. Users whose science objectives depend on the most accurate spectral response (ie: fitting line-rich spectra) may notice an effect. Users whose science objectives do not depend on the most accurate spectral response should not notice an effect.