

# V&V Reference Report

## L2 ASCDS Version : 8.1.2

Observation 1269 - L2 Version 3

Chandra X-Ray Center

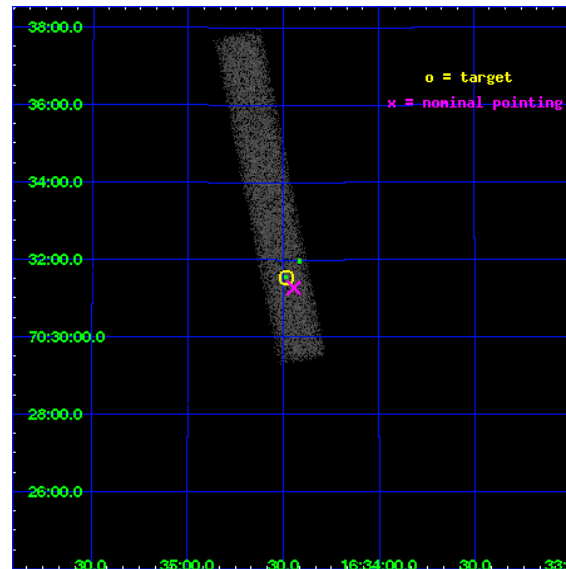
L2 Processing Date : Dec 16 2009

## Contents

<b>1</b>	<b>Front</b>	<b>2</b>
<b>2</b>	<b>OBI</b>	<b>3</b>
2.1	OBI . . . . .	3
2.1.1	Images . . . . .	3
2.1.2	Bias . . . . .	3
2.1.3	Parameters . . . . .	4
2.1.4	Events . . . . .	4
2.2	Compared Parameters . . . . .	5
2.3	Aspect . . . . .	6
2.4	Star Slots . . . . .	9
2.4.1	Slot 3 . . . . .	9
2.4.2	Slot 4 . . . . .	10
2.4.3	Slot 5 . . . . .	11
2.4.4	Slot 6 . . . . .	12
2.4.5	Slot 7 . . . . .	13
2.5	FID Slots . . . . .	14
2.5.1	Slot 0 . . . . .	14
2.5.2	Slot 1 . . . . .	15
2.5.3	Slot 2 . . . . .	16
<b>3</b>	<b>Point Sources</b>	<b>17</b>
<b>A</b>	<b>Summary</b>	<b>18</b>
A.1	Status . . . . .	18
A.2	Comments . . . . .	18

# 1 Front

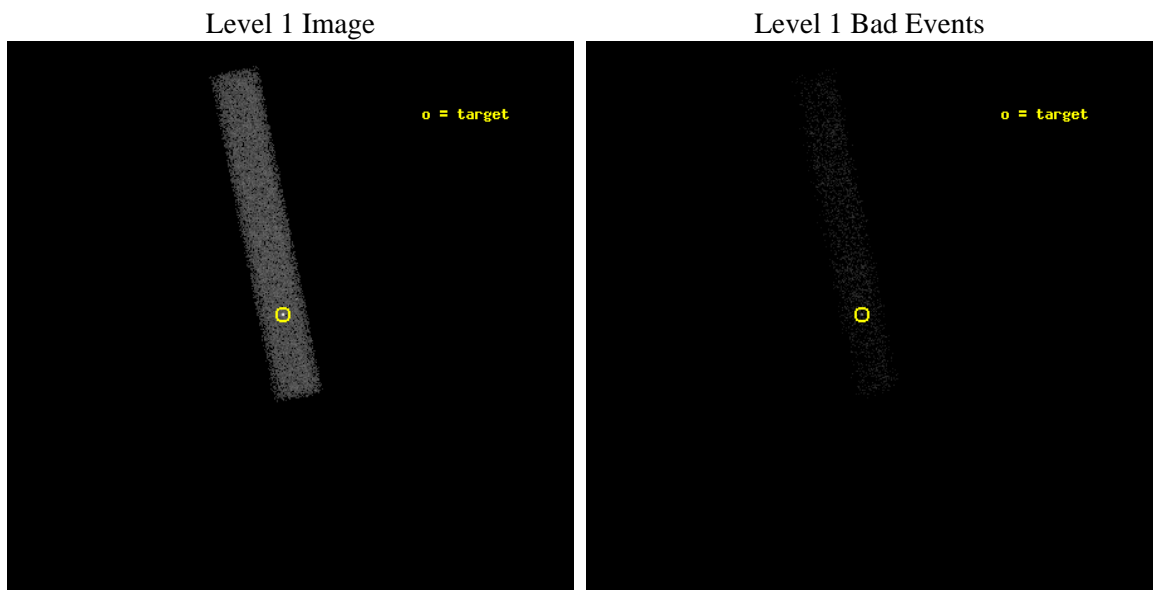
seq_num	780219	Sequence number
obs_id	1269	Observation id
title	&#160	Proposal title
observer	Dr. CXC Calibration	Principal investigator
object	PG1634+70	Source name
dtcycle	0	&#160
cycle	P	events from which exps? Prim/Second/Both
ra_targ	248.620833	Observer's specified target RA
dec_targ	70.525556	Observer's specified target Dec
ra_nom	248.61138495049	Nominal RA
dec_nom	70.521244848393	Nominal Dec
roll_nom	258.61563166367	Nominal Roll
revision	3	Processing version of data
ontime	11948.32105843	Sum of GTIs [s]
livetime	10836.496515899	Livetime [s]
ontime7	11948.32105843	Sum of GTIs [s]
l2events	18286	Number of level 2 events



## 2 OBI

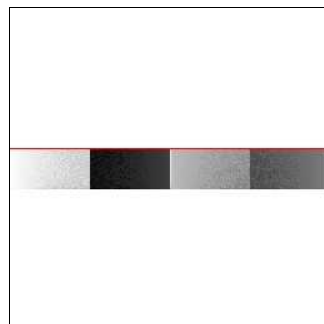
### 2.1 OBI

#### 2.1.1 Images



#### 2.1.2 Bias

Chip 7



### 2.1.3 Parameters

obi_num	0	Obi number	sched_exp_time	12000.000000	Scheduled observation exposure time
ascdsver	8.1.2	ASCDS version number	ontime	11948.32105843	Sum of GTIs [s]
caldbver	4.1.4	&#160	ontime7	11948.32105843	Sum of GTIs [s]
date	2009-12-16T05:55:21	Date and time of file creation	ll events	28297	Number of level 1 events
revision	3	Processing version of data			

### 2.1.4 Events

	<b>ccd 7</b>
level 1 events	28297
rejected events	9401
rejected %	33%

	<b>ccd 7</b>
grade 0 events	2807
	9%
grade 1 events	11
	0%
grade 2 events	3131
	11%
grade 3 events	2422
	8%
grade 4 events	2074
	7%
grade 5 events	1054
	3%
grade 6 events	8462
	29%
grade 7 events	8336
	29%

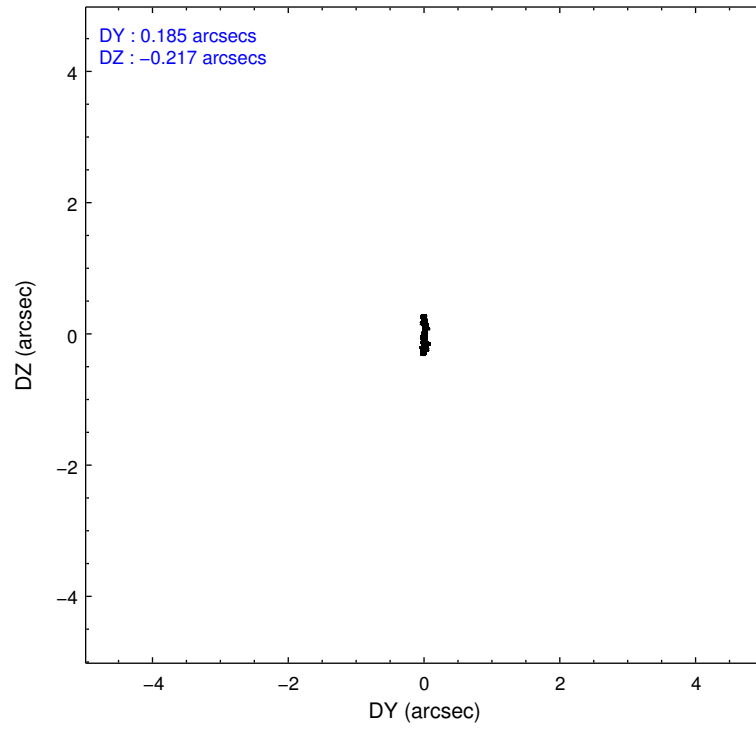
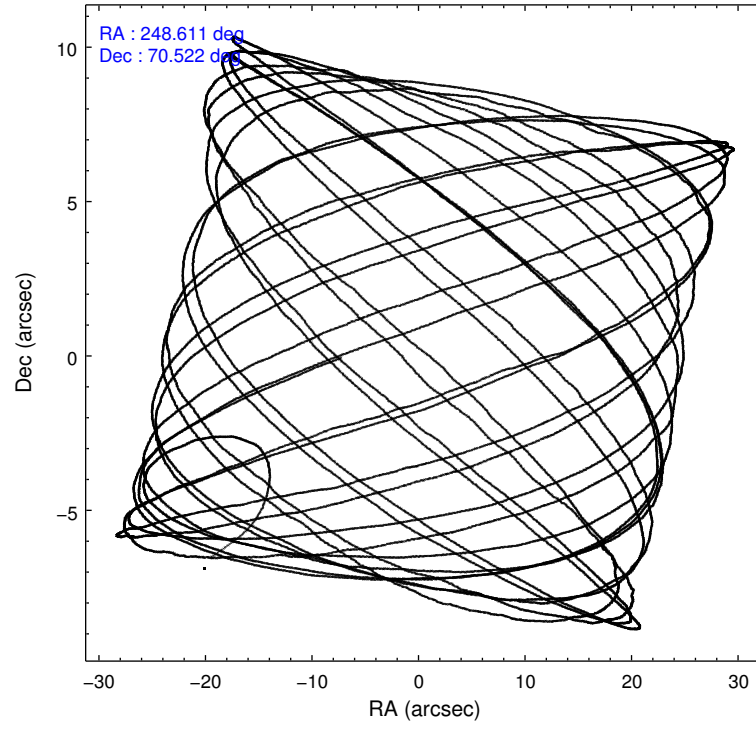


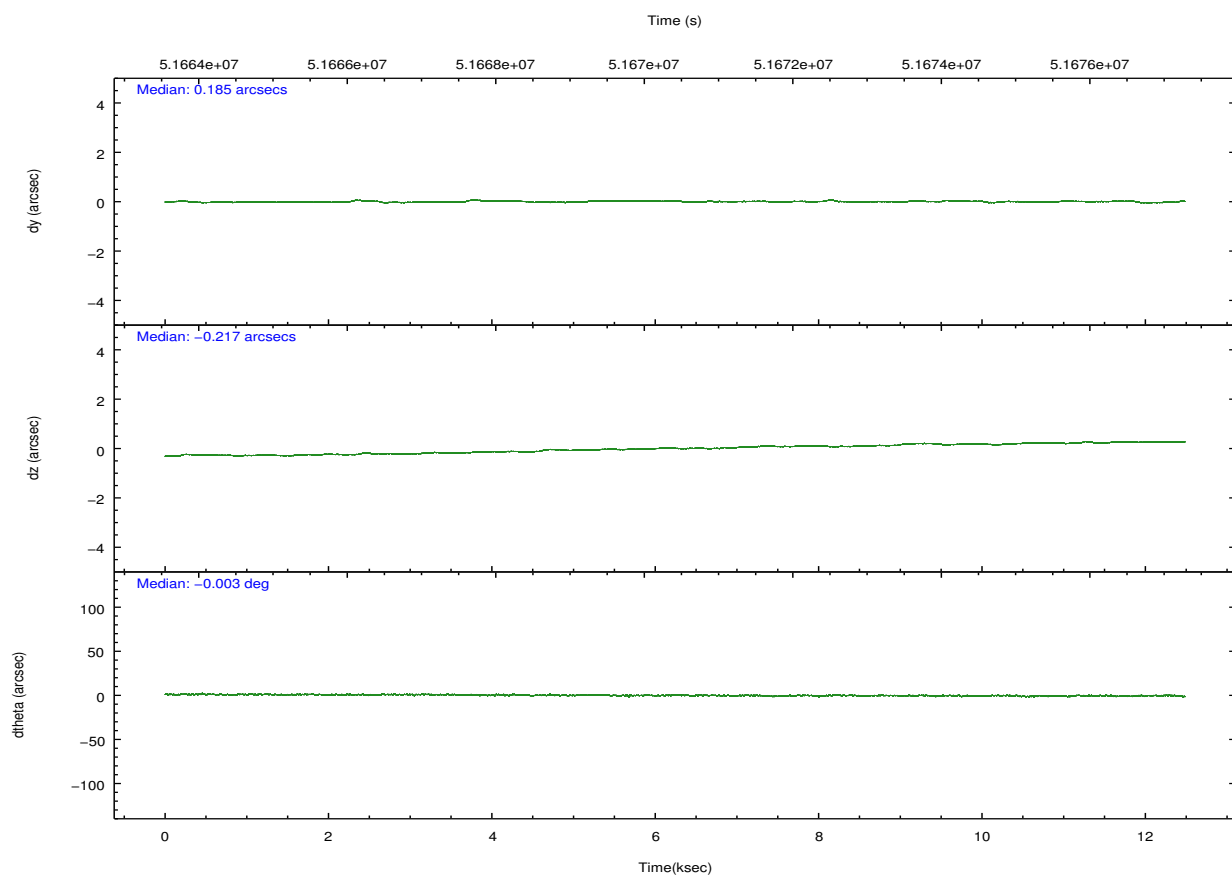
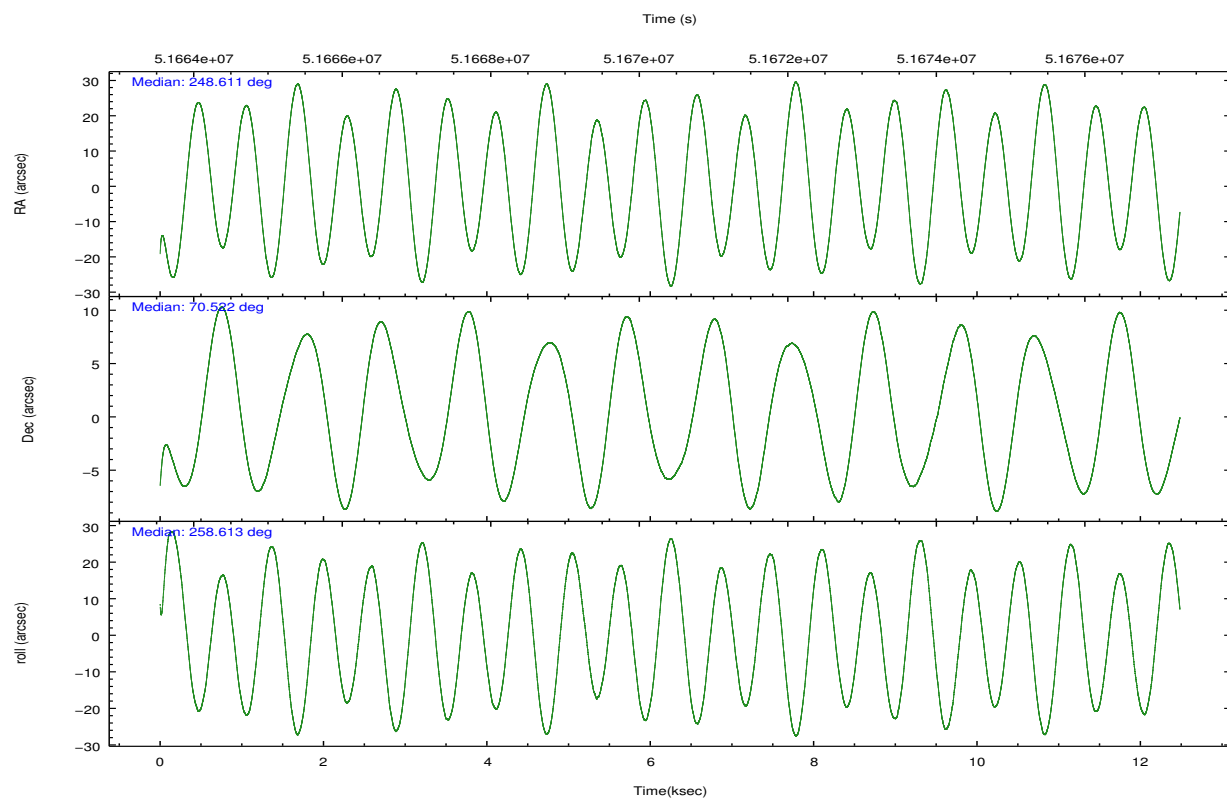
## 2.2 Compared Parameters

Parameter	Planned	Actual
Instrument	ACIS	ACIS
Detector	ACIS-7	ACIS-7
Grating	NONE	NONE
Data mode	FAINT	FAINT
Observation mode	POINTING	POINTING
Pointing RA	248.586381	248.6113849504883
Pointing Dec	70.547632	70.52124484839334
Pointing Roll	258.482588	258.6156316636725
SIM focus pos (mm)	-0.684267	-0.865731118321573
SIM defocus (mm)	0	-0.1814636570216768
SIM translation stage pos (mm)	-190.132523	-190.1199515274594
SIM translation stage offset (mm)	0	-0.012571055548392
Observation start time	51664657.184000	51663510.718627
Observation start date	1999-08-21T23:16:33	1999-08-21T22:58:30
Observation end time	51676657.184000	51678186.669155
Observation end date	1999-08-22T02:36:33	1999-08-22T03:03:06
Read mode	TIMED	TIMED

Parameter	Planned	Actual
Obspar format version number	6	6
Obspar file type	PREDICTED	ACTUAL
Obspar update status	NONE	UPDATED
Number of optional ACIS chips dropped	0	0
On-chip summing requested	N	N
Subarray requested	CUSTOM	1/8
Subarray start row	448	448
Subarray row count	128	128
Alternating exposures requested	N	N
Primary exposure time	0.000000	0.4

## 2.3 Aspect



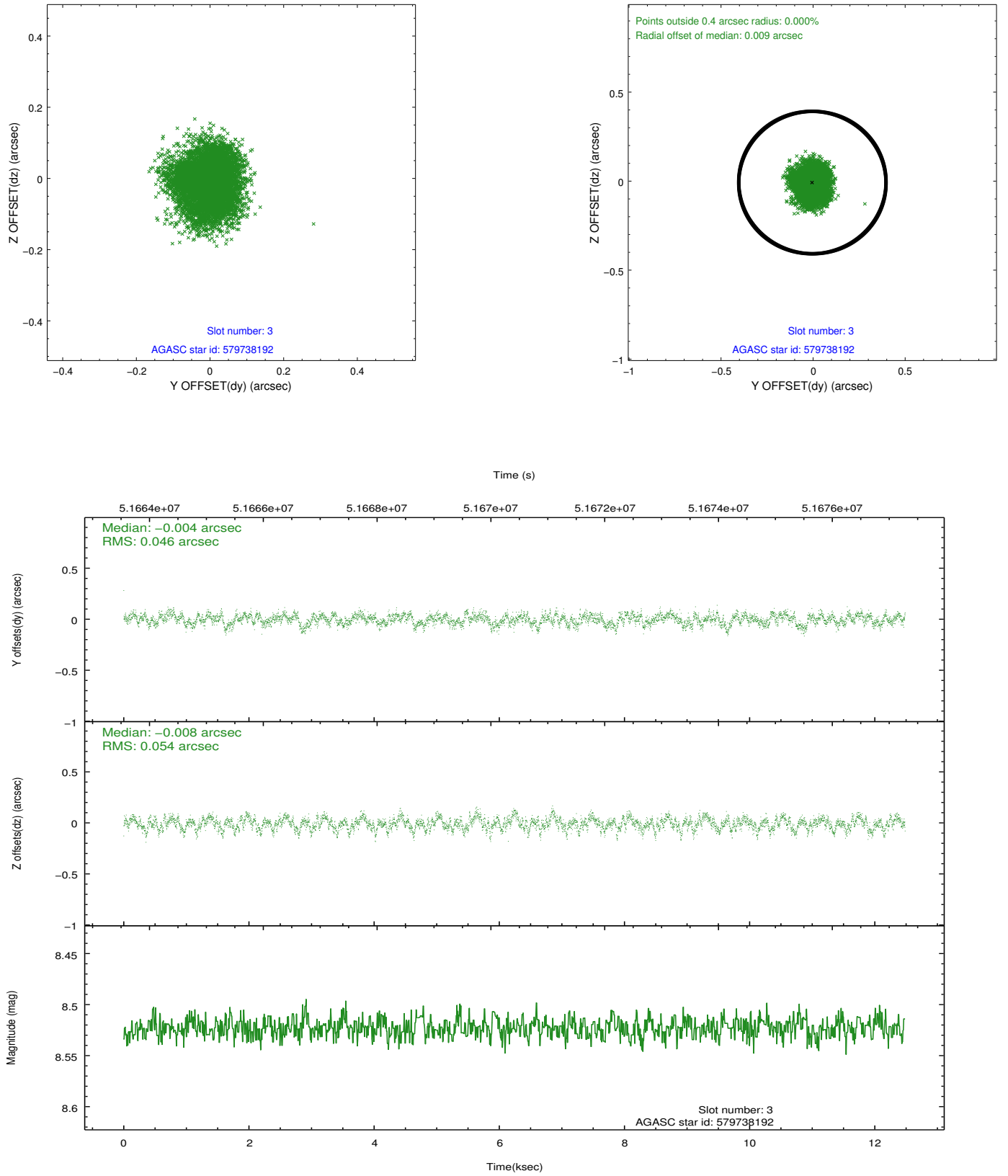


Slot Statistics

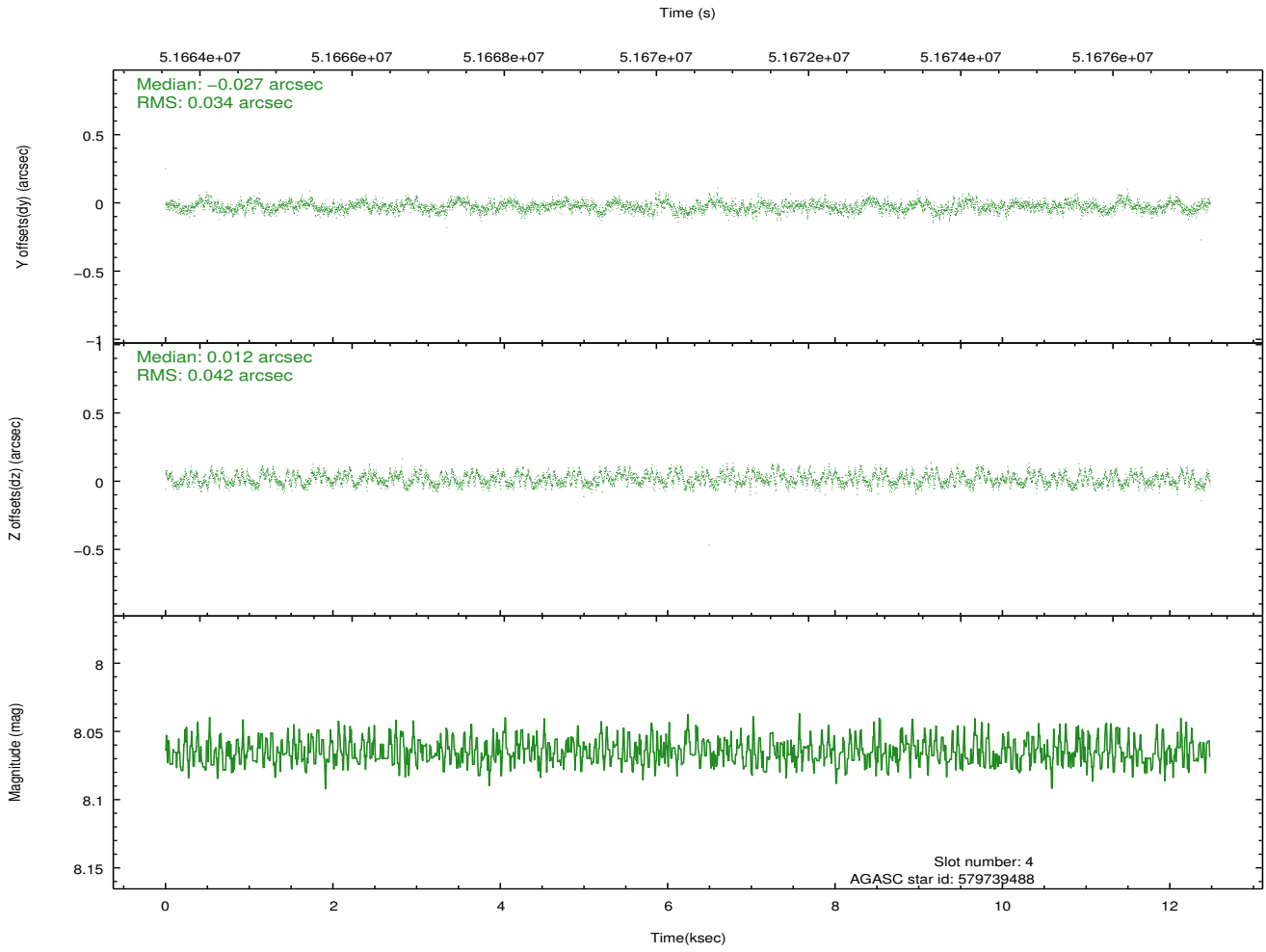
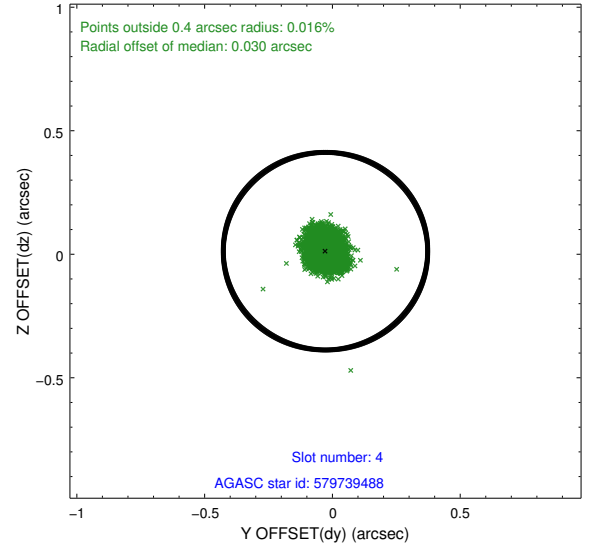
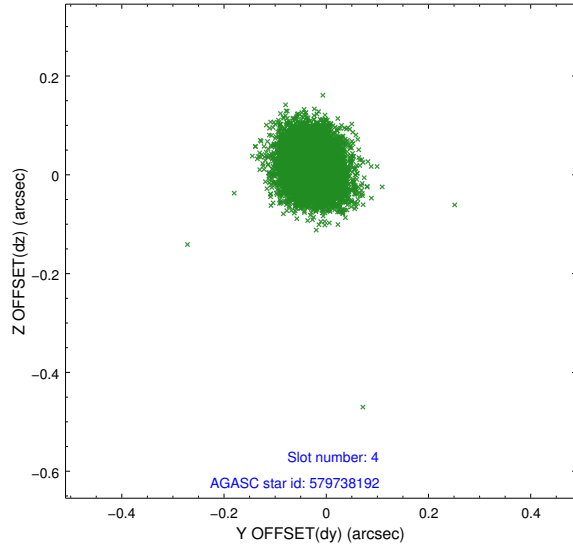
slot	status	id	mag	n_pts	med_dy	med_dz	dr1	dr2	ra	dec	mean_y	mean_z
0	FID	ACIS-S-3	7.35	6090	-0.031	0.028	0.011	0.018	0.000000	0.000000	60.37	-1850.16
1	FID	ACIS-S-4	7.22	6091	0.138	0.005	0.008	0.014	0.000000	0.000000	2160.71	187.13
2	FID	ACIS-S-5	7.25	6091	-0.135	-0.022	0.008	0.013	0.000000	0.000000	-1805.53	181.04
3	GUIDE	579738192	8.52	6089	-0.004	-0.008	0.077	0.121	248.010337	70.791071	-724.71	-843.23
4	GUIDE	579739488	8.07	6085	-0.027	0.012	0.058	0.089	248.280801	70.616878	-171.48	-406.80
5	GUIDE	579745824	8.19	6089	-0.074	0.014	0.075	0.114	250.088877	70.237575	707.18	2011.25
6	GUIDE	579742240	9.57	6084	0.025	0.024	0.092	0.146	248.342106	71.104022	-1905.27	-677.87
7	GUIDE	579743712	9.51	6087	0.080	-0.041	0.074	0.120	248.638856	70.070449	1671.06	407.05

## 2.4 Star Slots

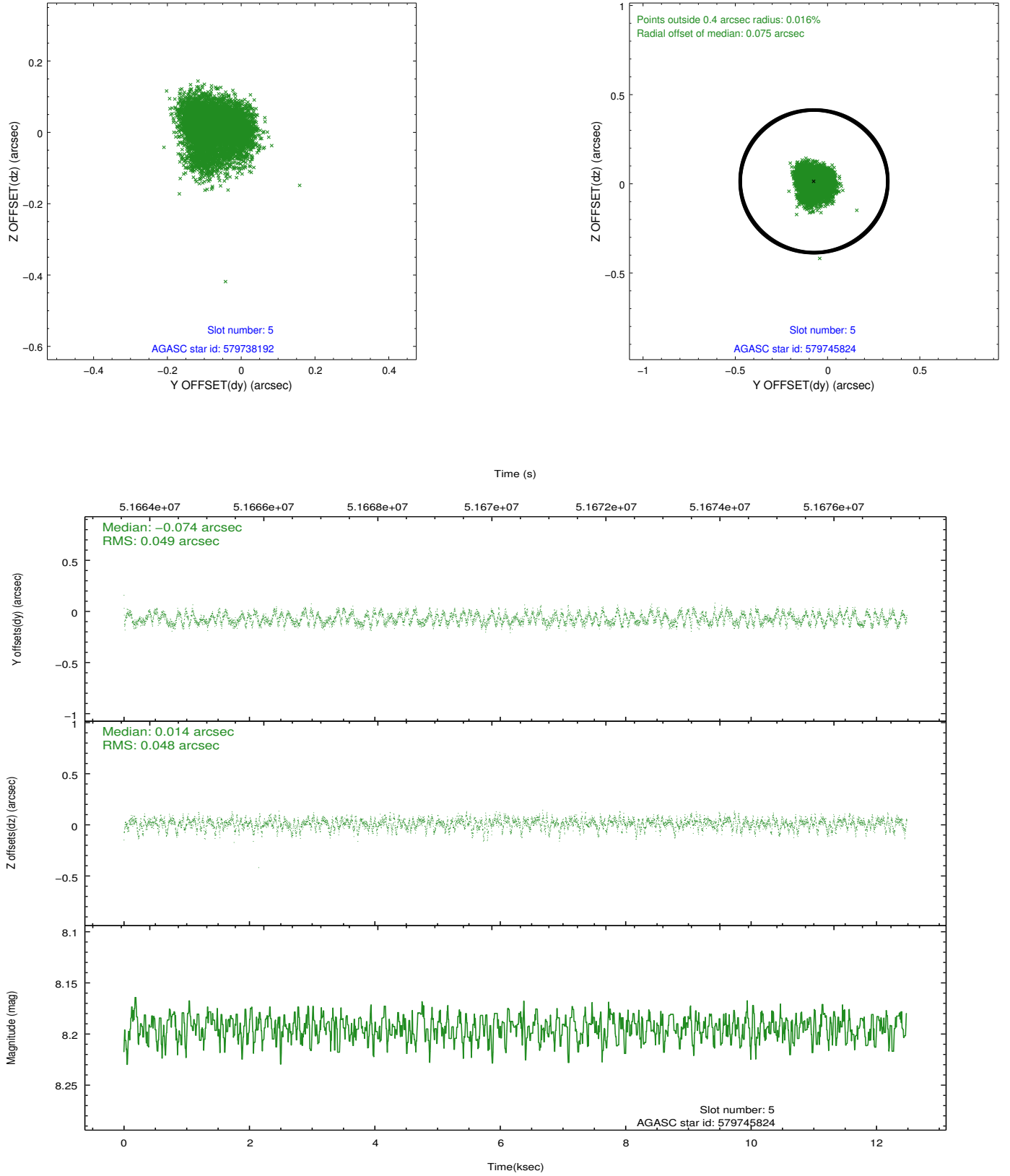
### 2.4.1 Slot 3



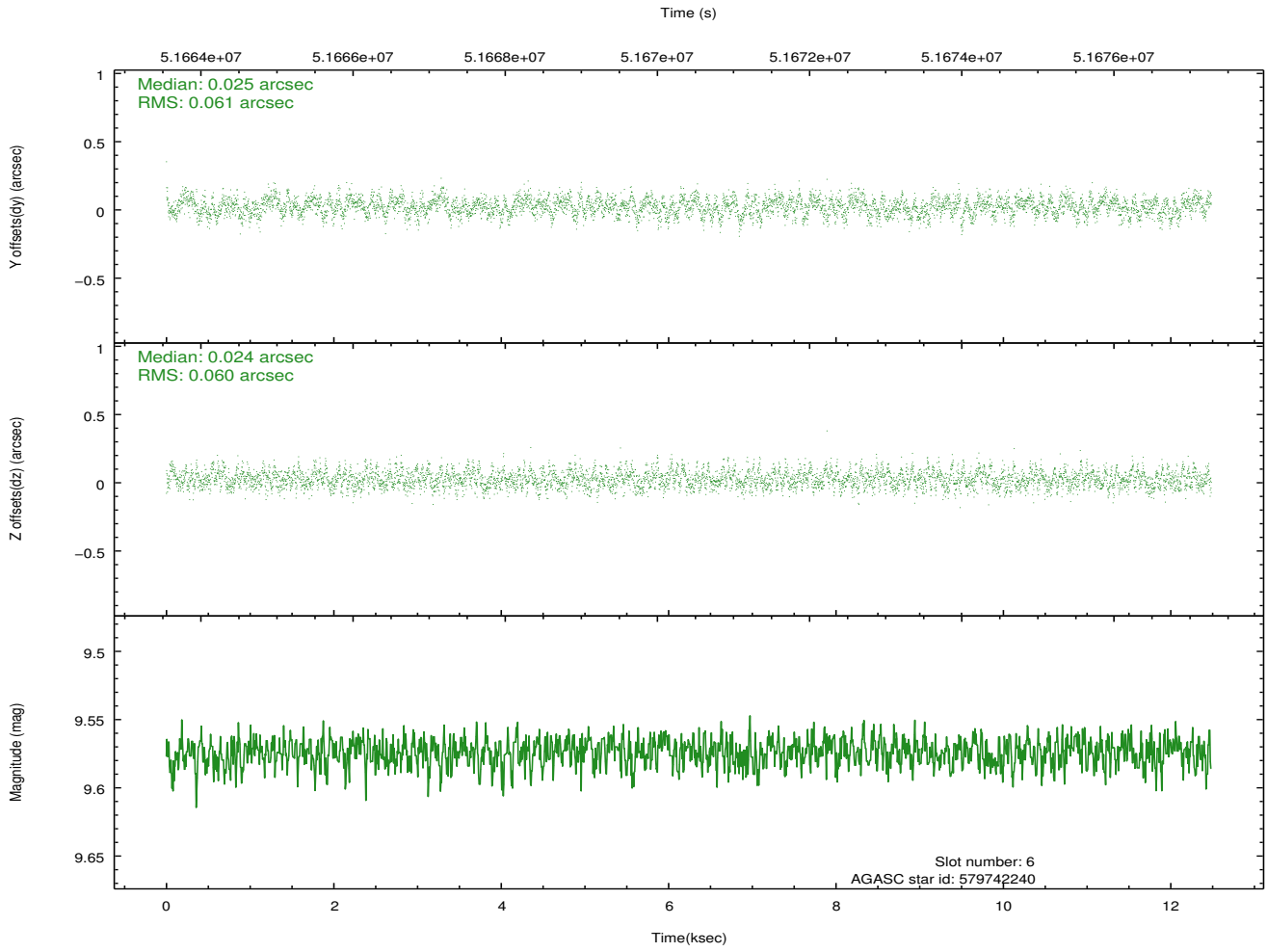
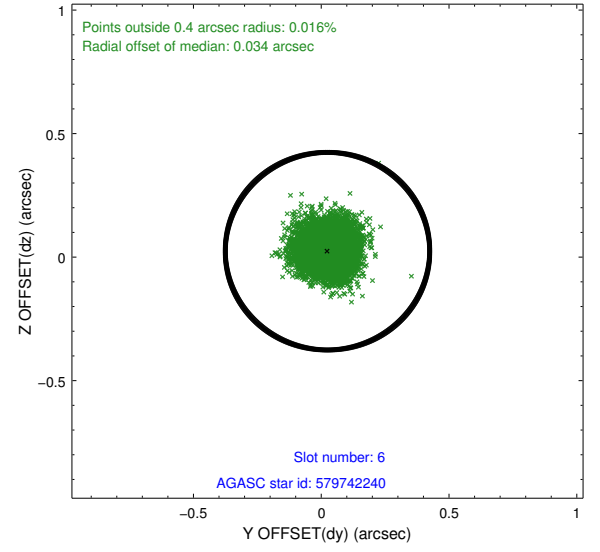
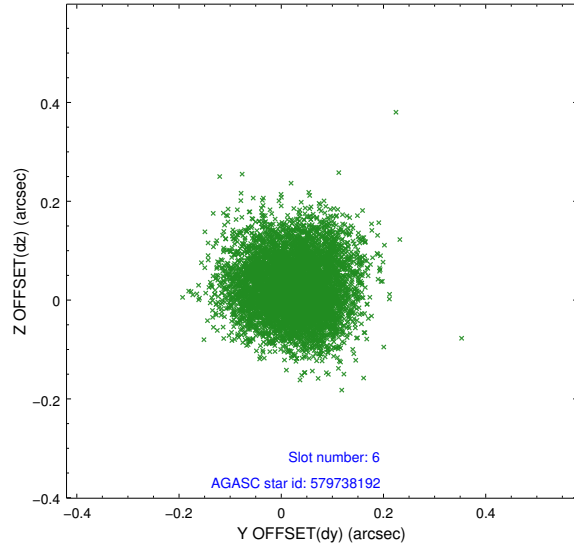
## 2.4.2 Slot 4



### 2.4.3 Slot 5

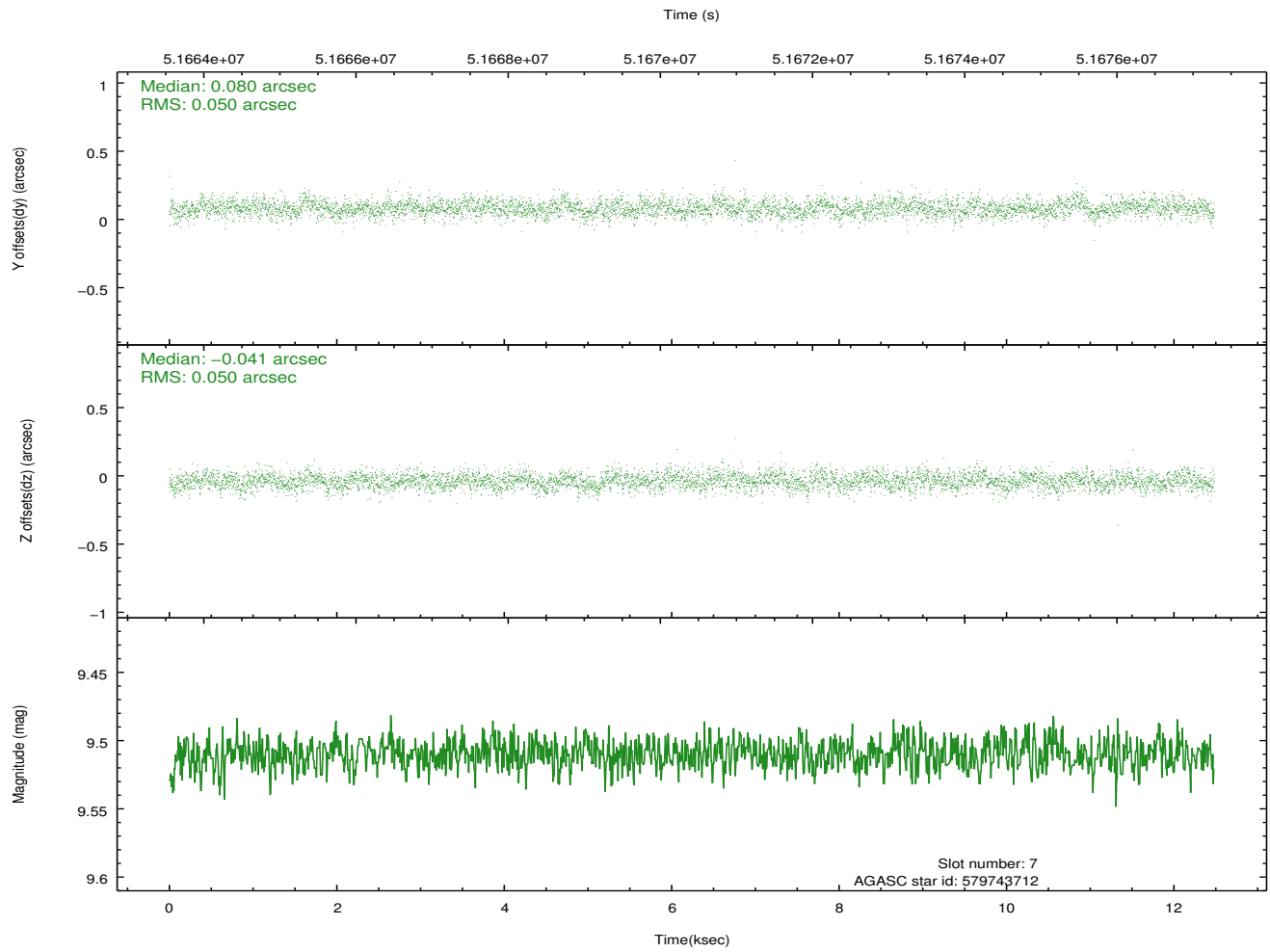
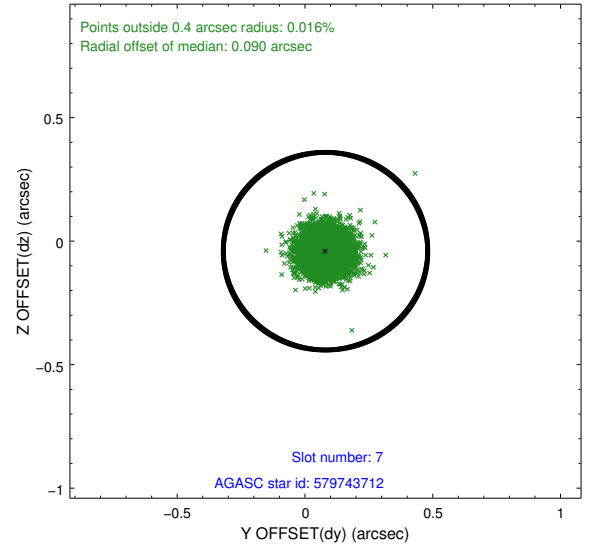
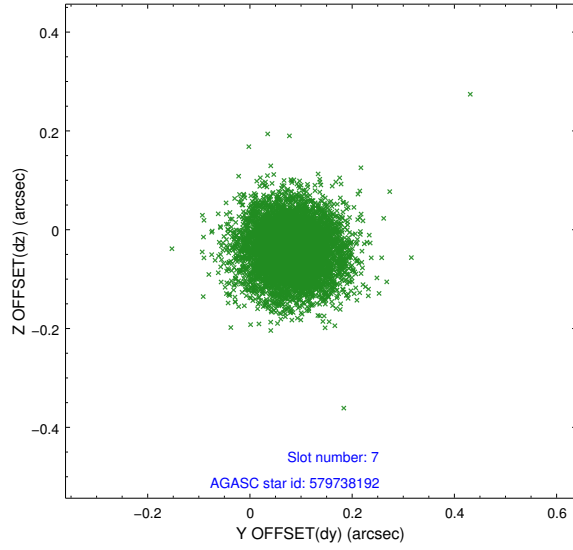


## 2.4.4 Slot 6



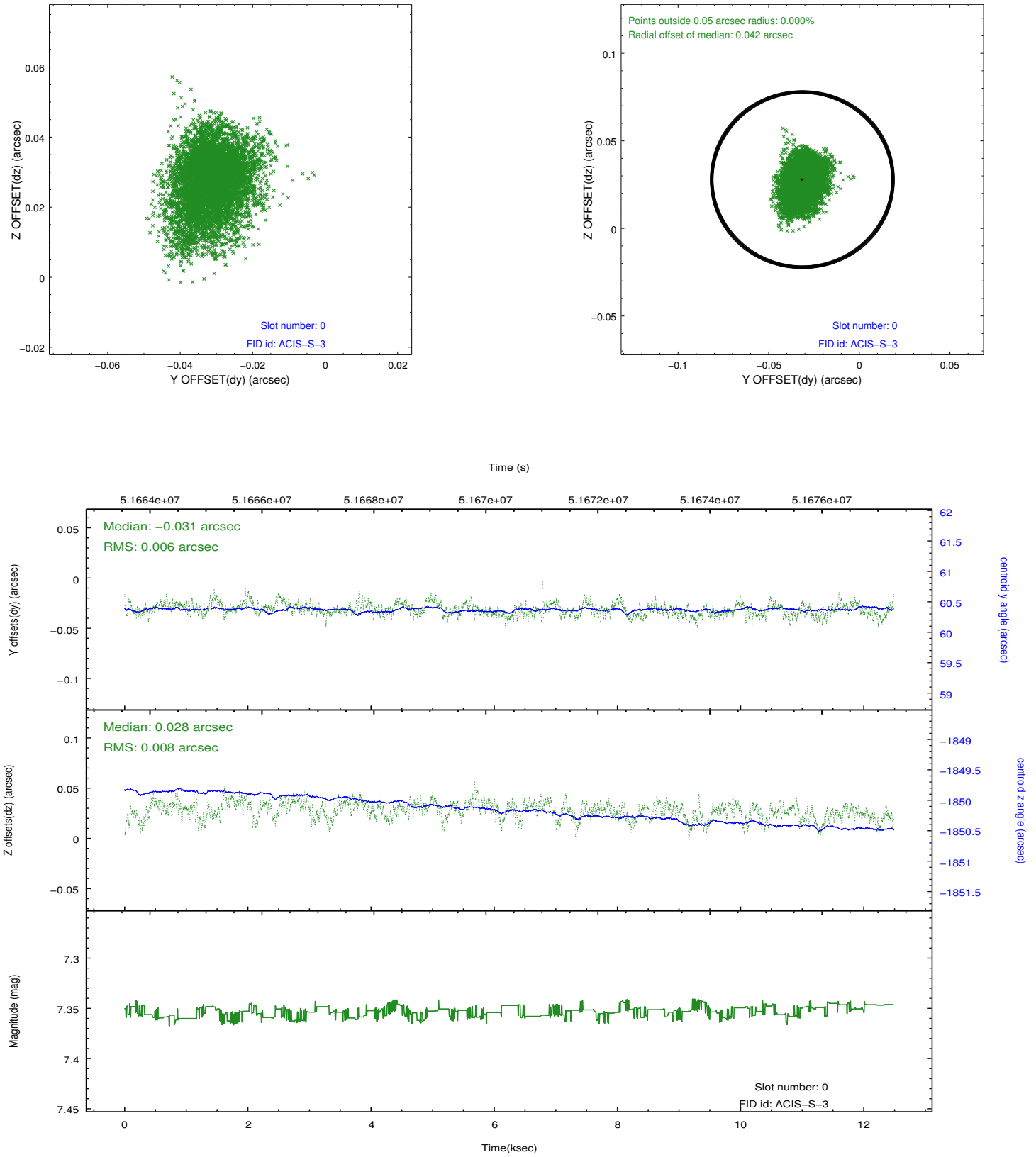


## 2.4.5 Slot 7

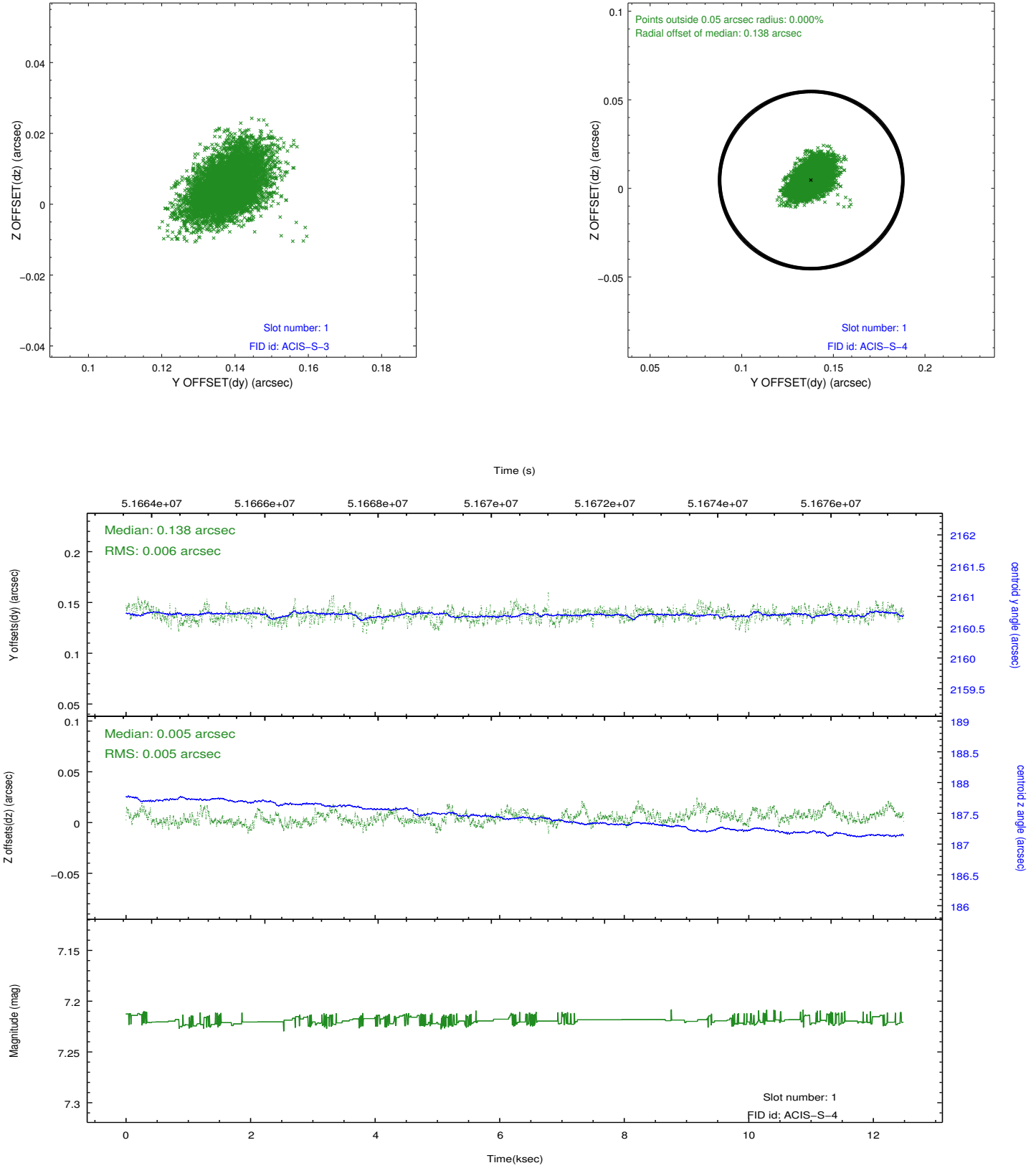


## 2.5 FID Slots

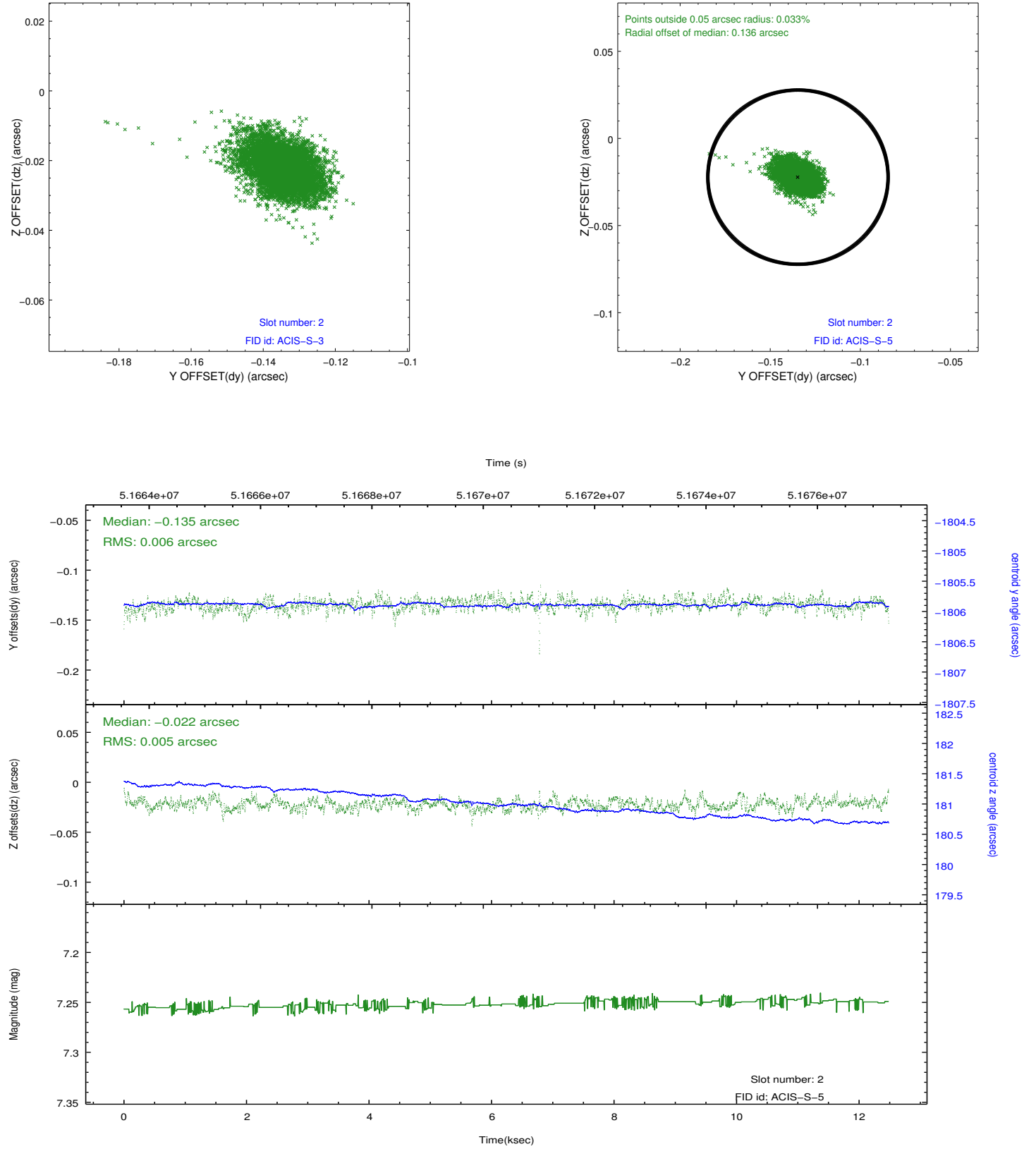
### 2.5.1 Slot 0



## 2.5.2 Slot 1



## 2.5.3 Slot 2



### 3 Point Sources

# A Summary

## A.1 Status

V&V Scientist	Joy Nichols
V&V Date (YYYY-MM-DD)	2010.08.03
V&V Edition	1
V&V Disposition and Status	OK
V&V Charge Time	11.945

## A.2 Comments

Focus test.

===

The focal plane temperature is approximately -100 C during this observation. This reprocessing of the data applies no CTI correction because none is available for this temperature at present.

The ACIS CTI correction has not been calibrated at this temperature, because it was early in the mission, and ACIS had not yet been lowered to the standard -119.7 C. Both front and back illuminated chips are affected. However a T\_GAIN correction has been applied to the BI chips (ACIS-5 and ACIS-7) data included here.

The ACIS spectral response calibration is less accurate at these warmer temperatures than it is at -119.7 C. Users whose science objectives depend on the most accurate spectral response (ie: fitting line-rich spectra) may notice an effect. Users whose science objectives do not depend on the most accurate spectral response should not notice an effect.

=====