

# V&V Reference Report

## L2 ASCDS Version : 8.2.1

Observation 1253 - L2 Version 2

Chandra X-Ray Center

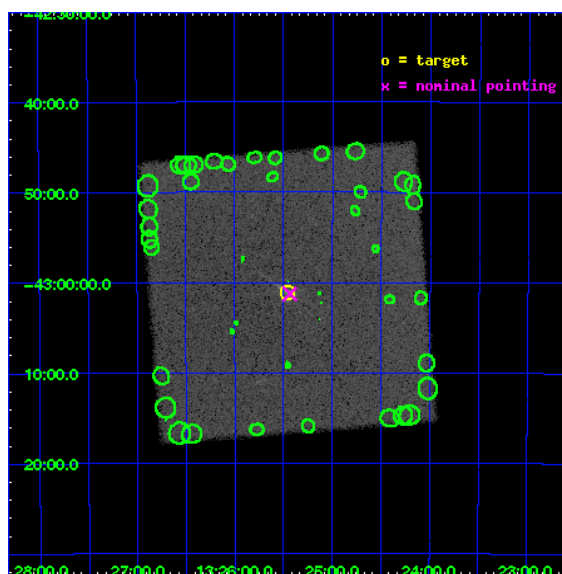
L2 Processing Date : Jan 13 2010

## Contents

<b>1</b>	<b>Front</b>	<b>2</b>
<b>2</b>	<b>OBI</b>	<b>3</b>
2.1	OBI . . . . .	3
2.1.1	Images . . . . .	3
2.1.2	Parameters . . . . .	4
2.1.3	Events . . . . .	4
2.2	Compared Parameters . . . . .	5
2.3	Aspect . . . . .	6
2.4	Star Slots . . . . .	9
2.4.1	Slot 3 . . . . .	9
2.4.2	Slot 4 . . . . .	10
2.4.3	Slot 5 . . . . .	11
2.4.4	Slot 6 . . . . .	12
2.4.5	Slot 7 . . . . .	13
2.5	FID Slots . . . . .	14
2.5.1	Slot 0 . . . . .	14
2.5.2	Slot 1 . . . . .	15
2.5.3	Slot 2 . . . . .	16
<b>3</b>	<b>Point Sources</b>	<b>17</b>
<b>A</b>	<b>Summary</b>	<b>18</b>
A.1	Status . . . . .	18
A.2	Comments . . . . .	18

# 1 Front

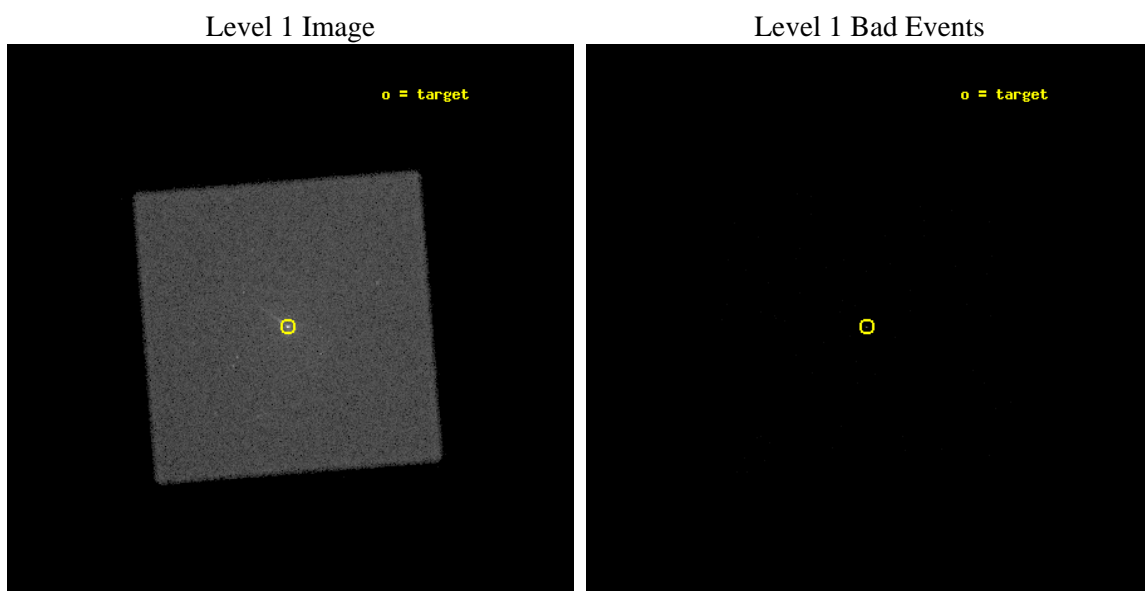
seq_num	780203	Sequence number
obs_id	1253	Observation id
title	DEMONSTRATION IMAGE OF CEN A	Proposal title
observer	Dr. CXC Calibration	Principal investigator
object	CEN A	Source name
ra_targ	201.365	Observer's specified target RA
dec_targ	-43.019722	Observer's specified target Dec
ra_nom	201.35866976389	Nominal RA
dec_nom	-43.021030896725	Nominal Dec
roll_nom	220.47958547666	Nominal Roll
revision	2	Processing version of data
ontime	6886.078372471	[s]
livetime	6833.0910700148	Ontime multiplied by DTCOR
l2events	221032	Number of level 2 events



## 2 OBI

### 2.1 OBI

#### 2.1.1 Images



### 2.1.2 Parameters

obi_num	1	Obi number	sched_exp_time	20000.000000	Scheduled observation exposure time
ascdsver	8.2.1	Processing system revision	ontime	6888.0002472401	[s]
caldbver	4.1.5	&#160	ll events	383457	Number of level 1 events
date	2010-01-13T11:23:33	Date and time of file creation			
revision	3	Processing version of data			

### 2.1.3 Events

#### Level 1 Events

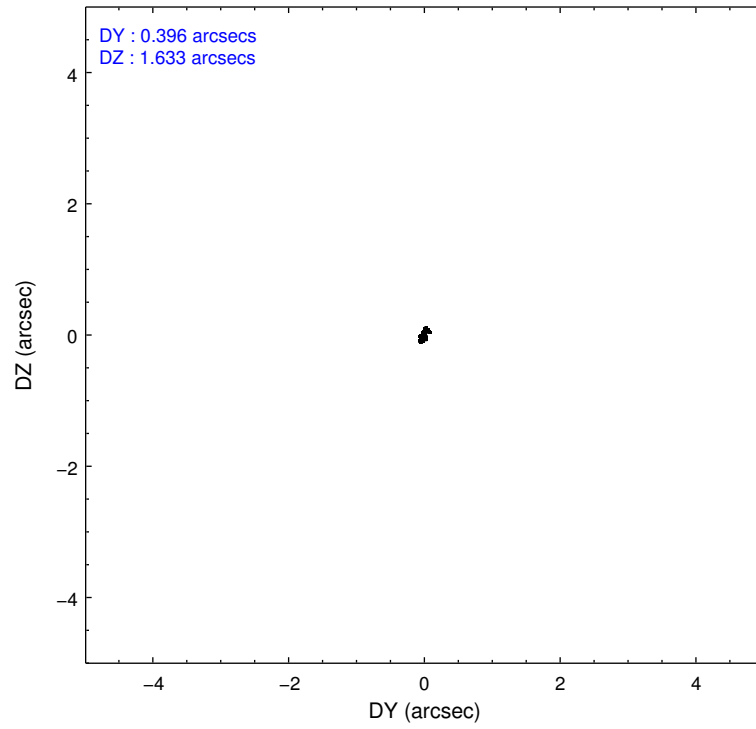
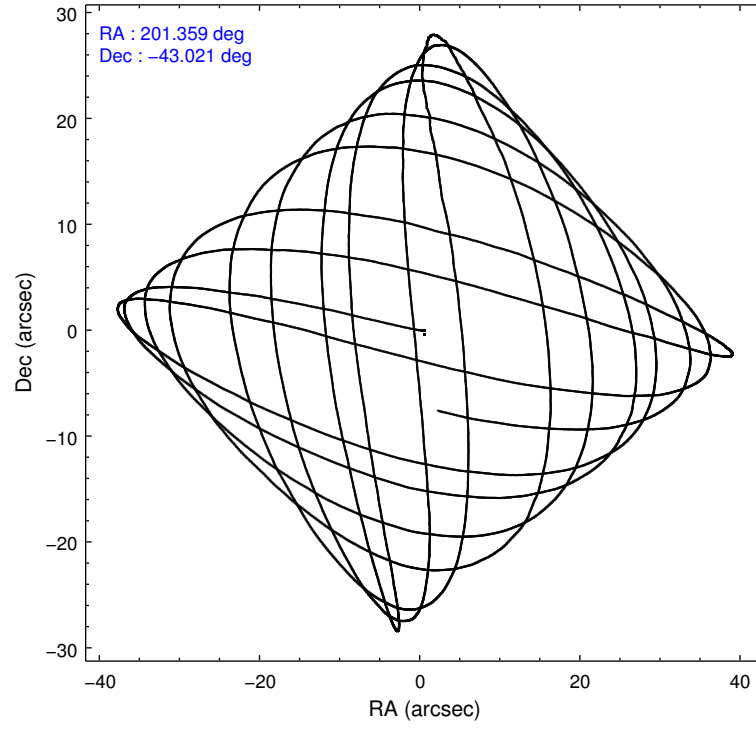
	<b>segment 0</b>
level 1 events	383457
rejected events	2912
rejected %	0%

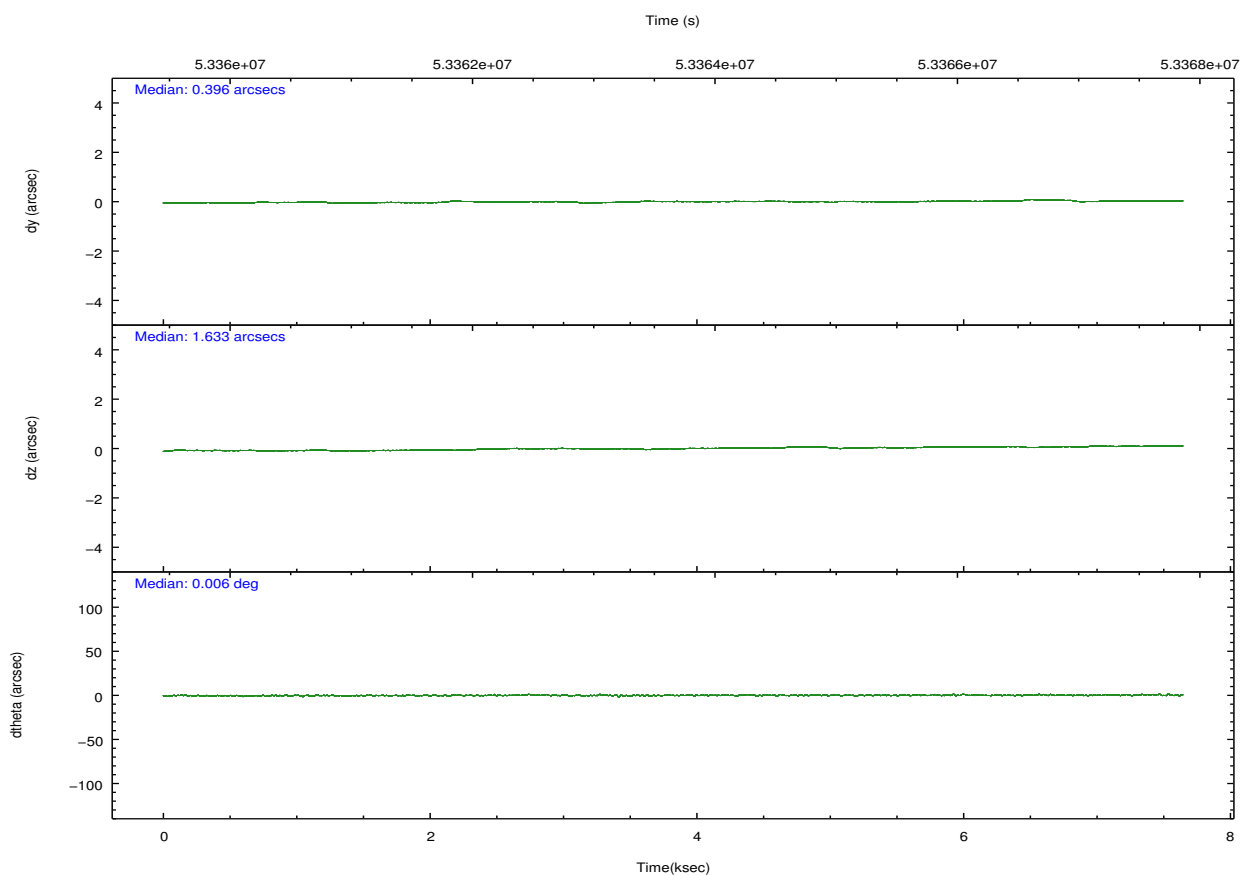
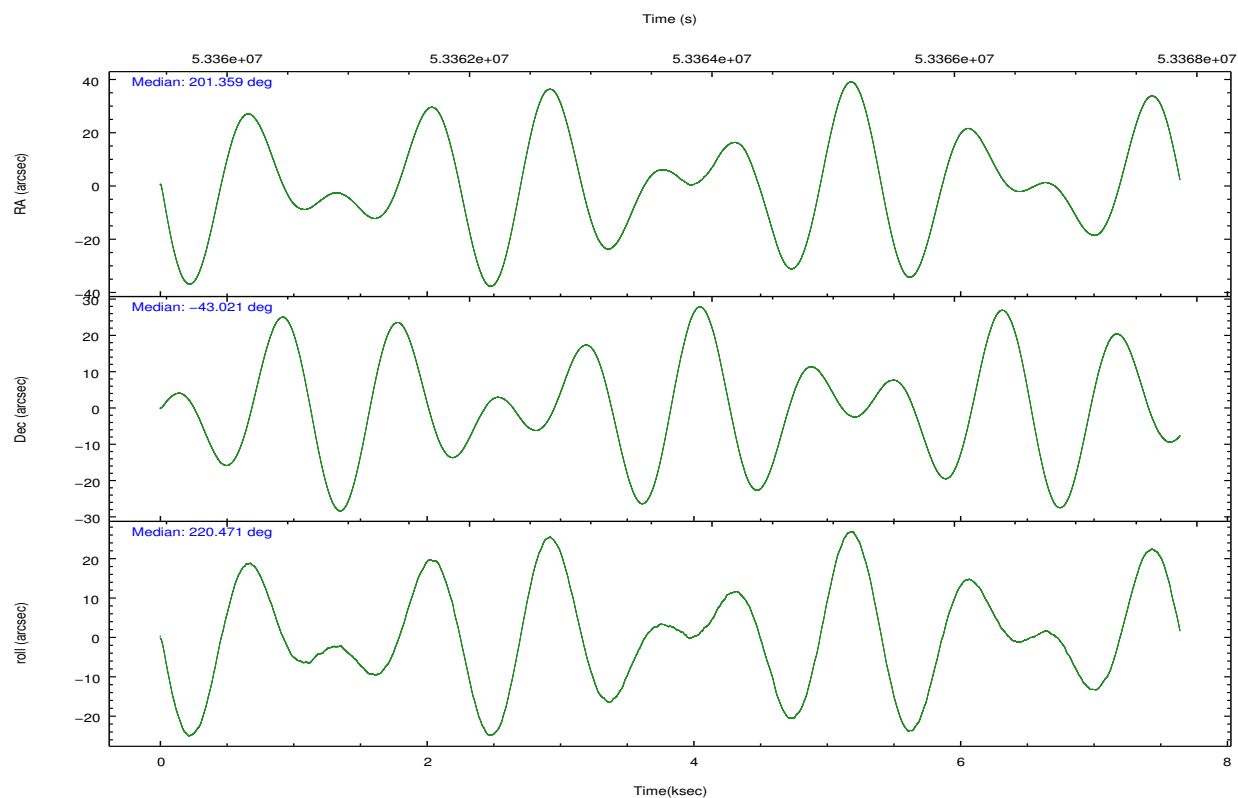


## 2.2 Compared Parameters

Parameter	Planned	Actual	Parameter	Planned	Actual
Instrument	HRC	HRC	Obspar format version number	6	6
Detector	HRC-I	HRC-I	Obspar file type	PREDICTED	ACTUAL
Grating	NONE	NONE	Obspar update status	NONE	UPDATED
Data mode	OBSERVING	OBSERVING			
Observation mode	POINTING	POINTING			
Pointing RA	201.371146	201.3586697638947			
Pointing Dec	-42.995246	-43.02103089672541			
Pointing Roll	220.583592	220.4795854766594			
SIM focus pos (mm)	-1.040293	-1.209467346227443			
SIM defocus (mm)	0	-0.1691747255685685			
SIM translation stage pos (mm)	126.985494	126.9854943052878			
SIM translation stage offset (mm)	0	-5.413686238853188e-06			
Observation start time	53360308.184000	53359641.829571			
Observation start date	1999-09-10T14:17:24	1999-09-10T14:07:21			
Observation end time	53380308.184000	53367477.954852			
Observation end date	1999-09-10T19:50:44	1999-09-10T16:17:57			

## 2.3 Aspect



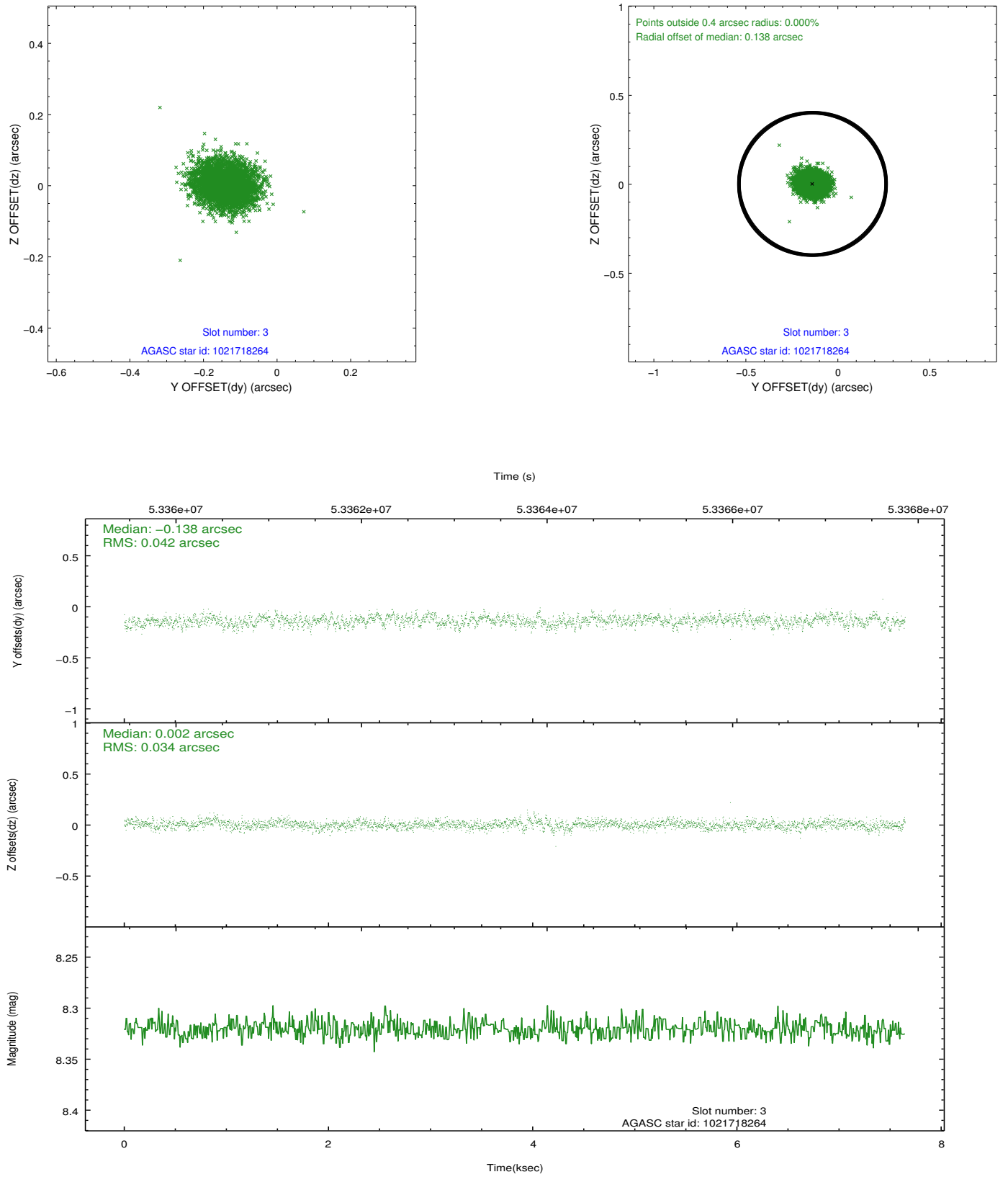


Slot Statistics

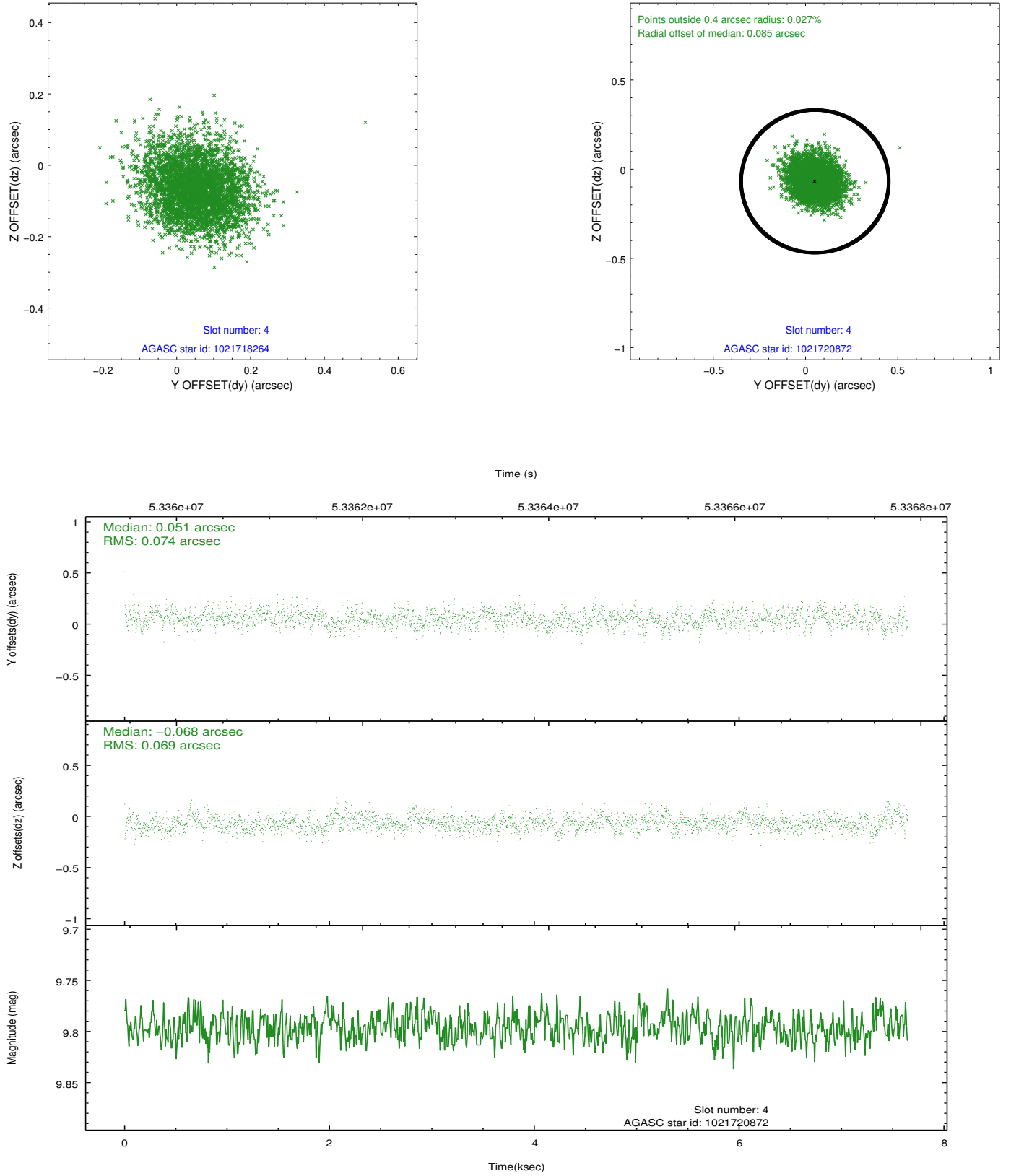
slot	status	id	mag	n_pts	med_dy	med_dz	dr1	dr2	ra	dec	mean_y	mean_z
0	FID	HRC-I-1	6.94	3731	0.014	-0.093	0.008	0.022	0.000000	0.000000	-755.71	-1289.48
1	FID	HRC-I-3	7.03	3731	0.067	0.002	0.007	0.013	0.000000	0.000000	-1184.44	1014.78
2	FID	HRC-I-4	6.97	3730	0.032	0.002	0.007	0.025	0.000000	0.000000	1286.65	1013.11
3	GUIDE	1021718264	8.32	3725	-0.138	0.002	0.058	0.094	202.114846	-42.795539	-1953.90	738.83
4	GUIDE	1021720872	9.80	3729	0.051	-0.068	0.108	0.173	200.668338	-42.835886	1041.06	-1636.06
5	GUIDE	1021716808	8.84	3730	-0.008	-0.150	0.095	0.148	200.901189	-42.531395	-136.26	-2076.76
6	GUIDE	1021721672	9.54	3730	-0.075	0.088	0.087	0.137	201.740358	-43.079729	-537.88	864.10
7	GUIDE	1022234656	10.65	3656	0.167	0.131	0.163	0.257	201.431335	-43.715295	1567.25	2071.46

## 2.4 Star Slots

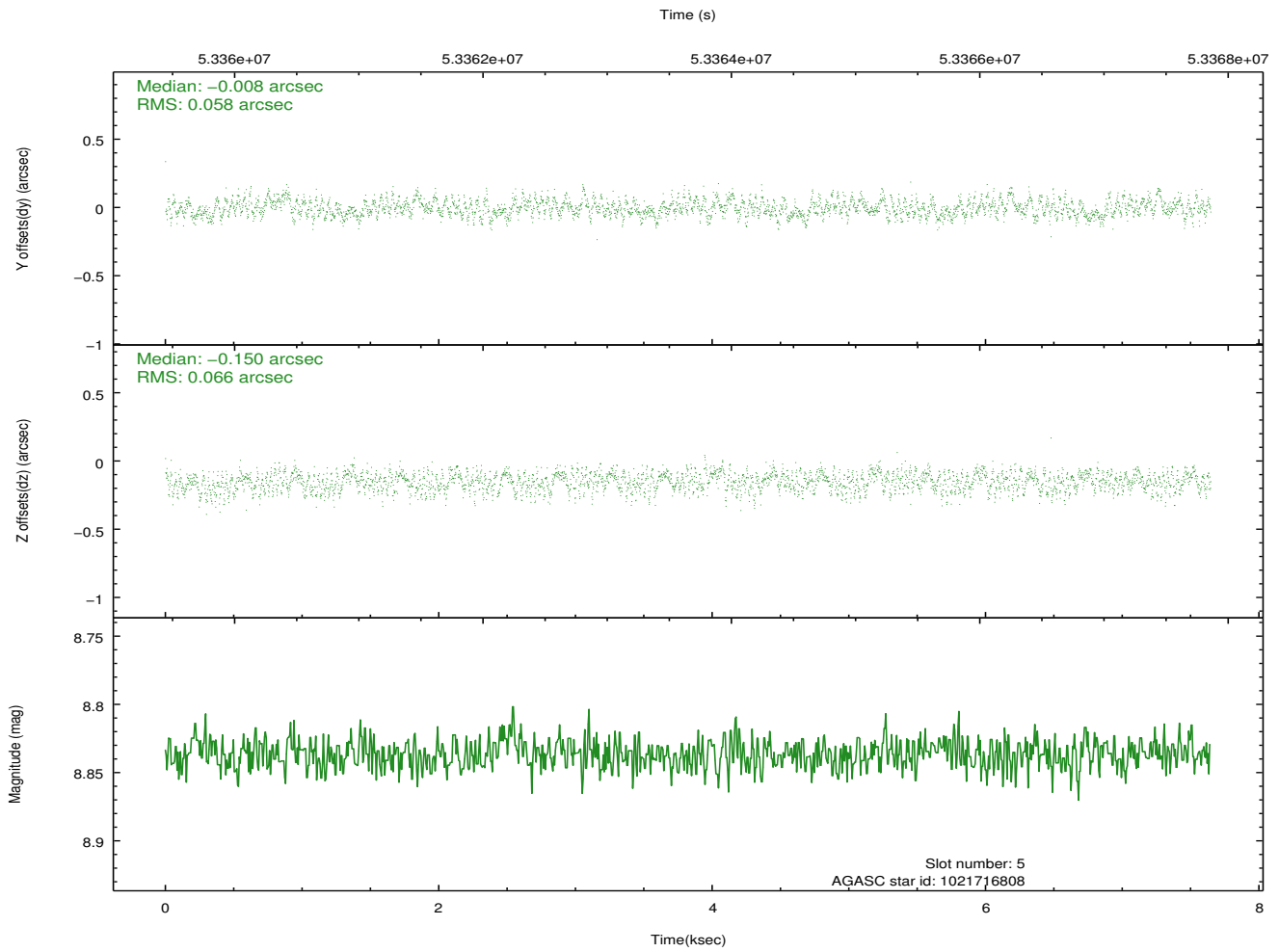
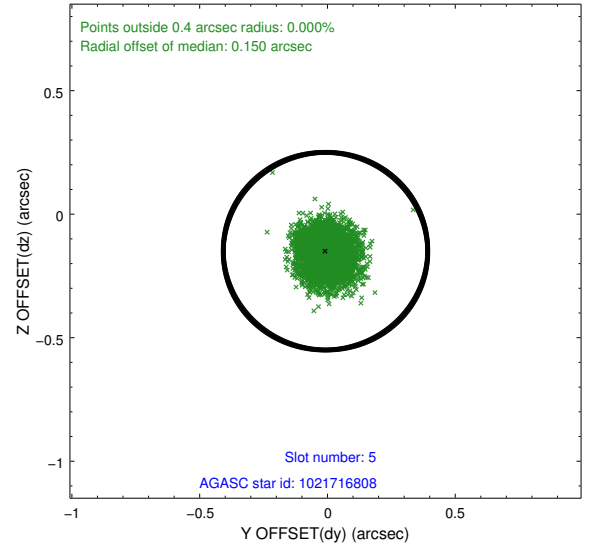
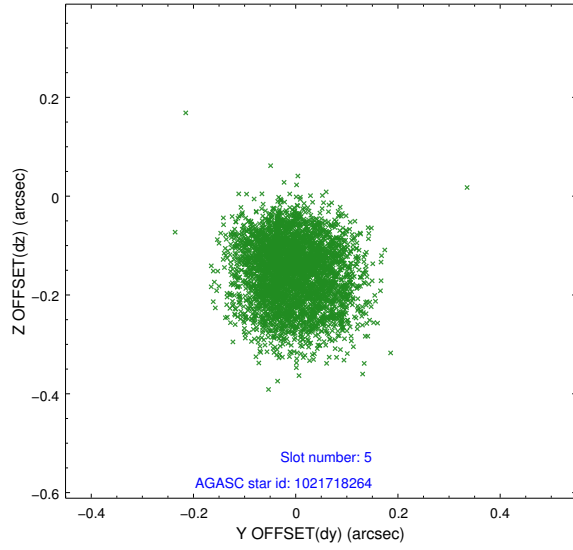
### 2.4.1 Slot 3



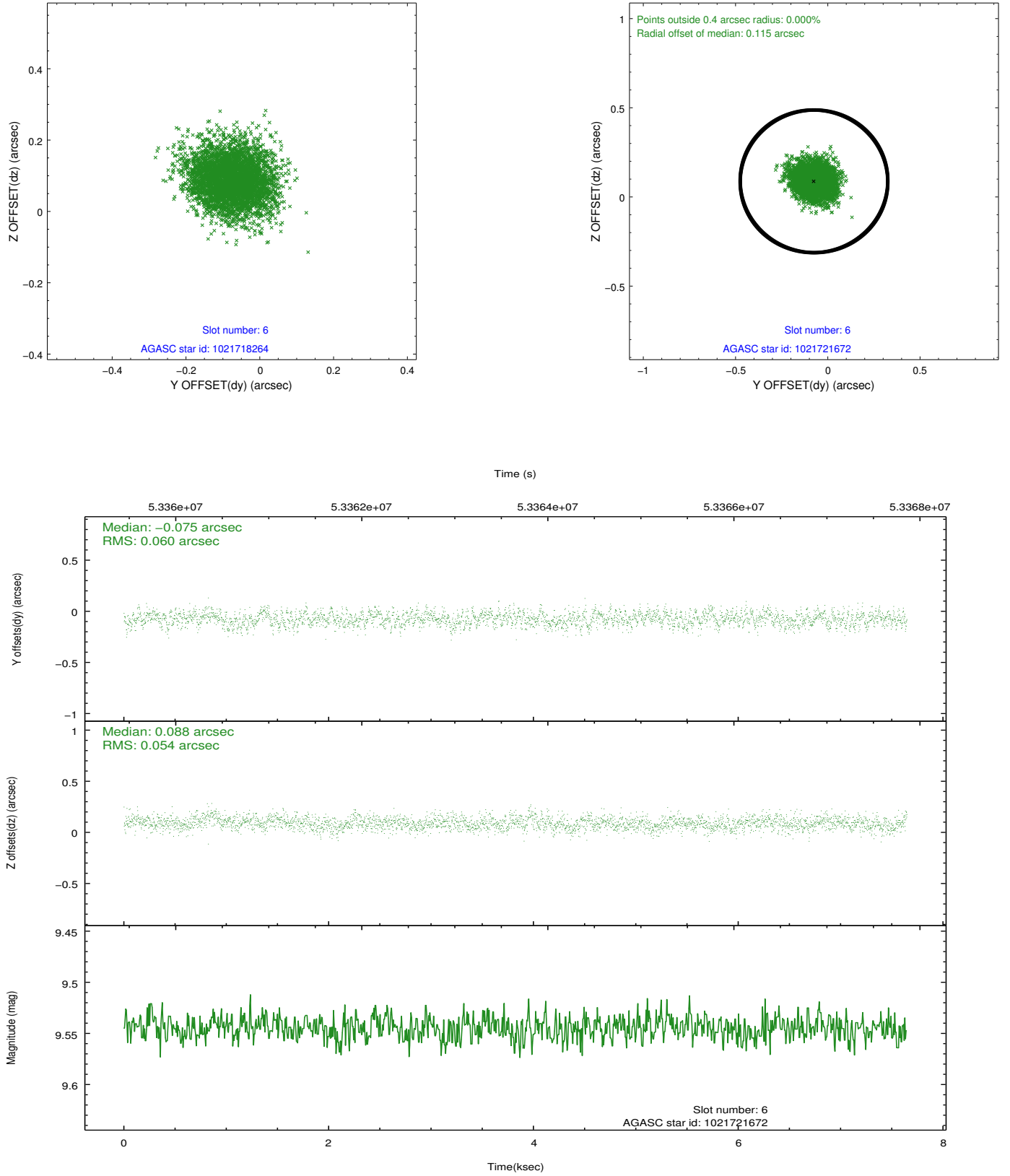
## 2.4.2 Slot 4



### 2.4.3 Slot 5

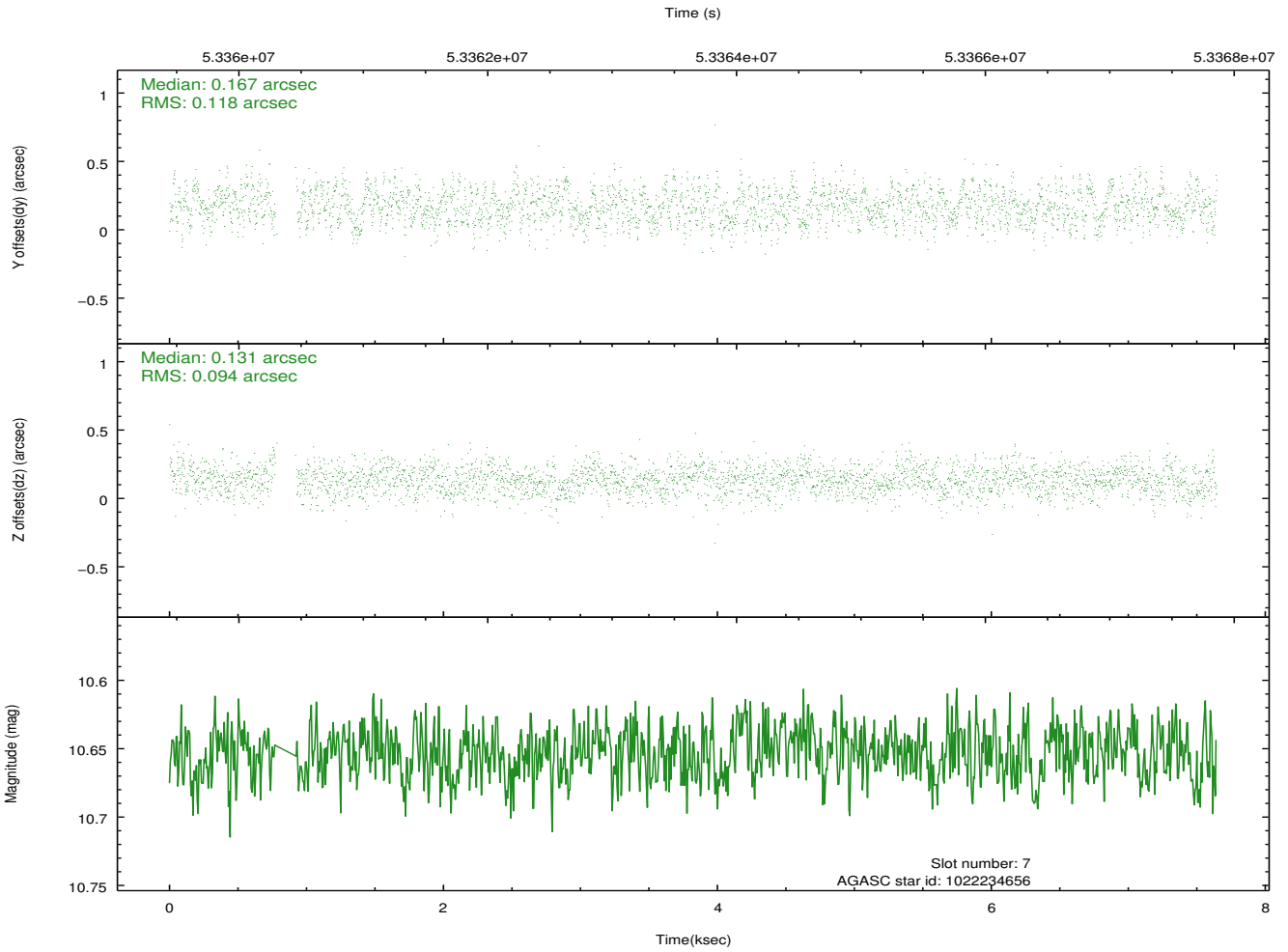
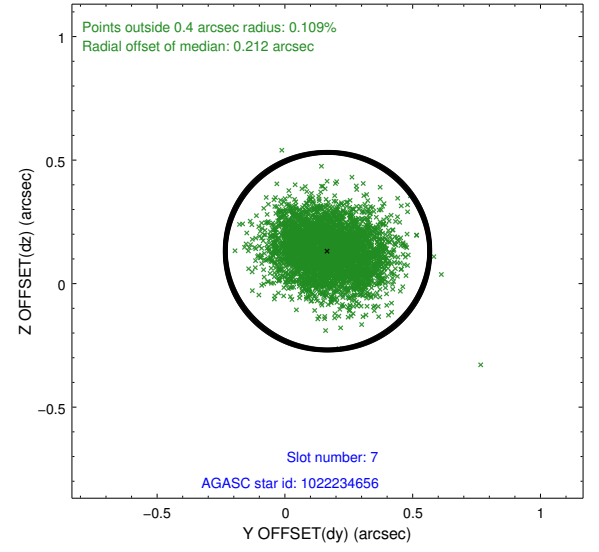
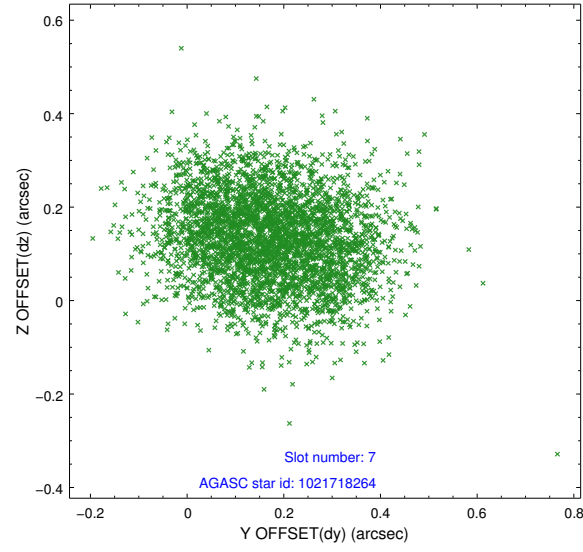


## 2.4.4 Slot 6



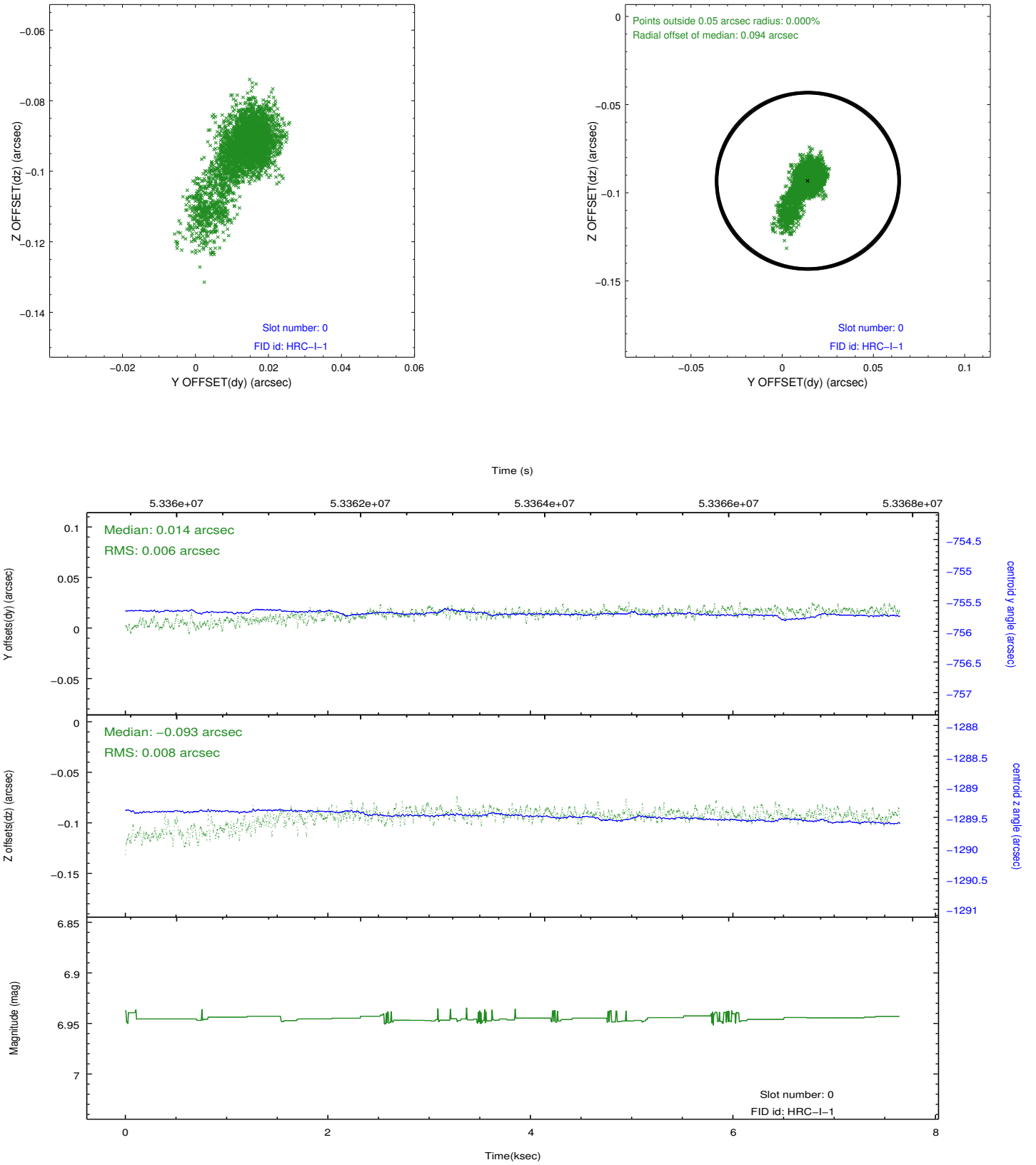


## 2.4.5 Slot 7

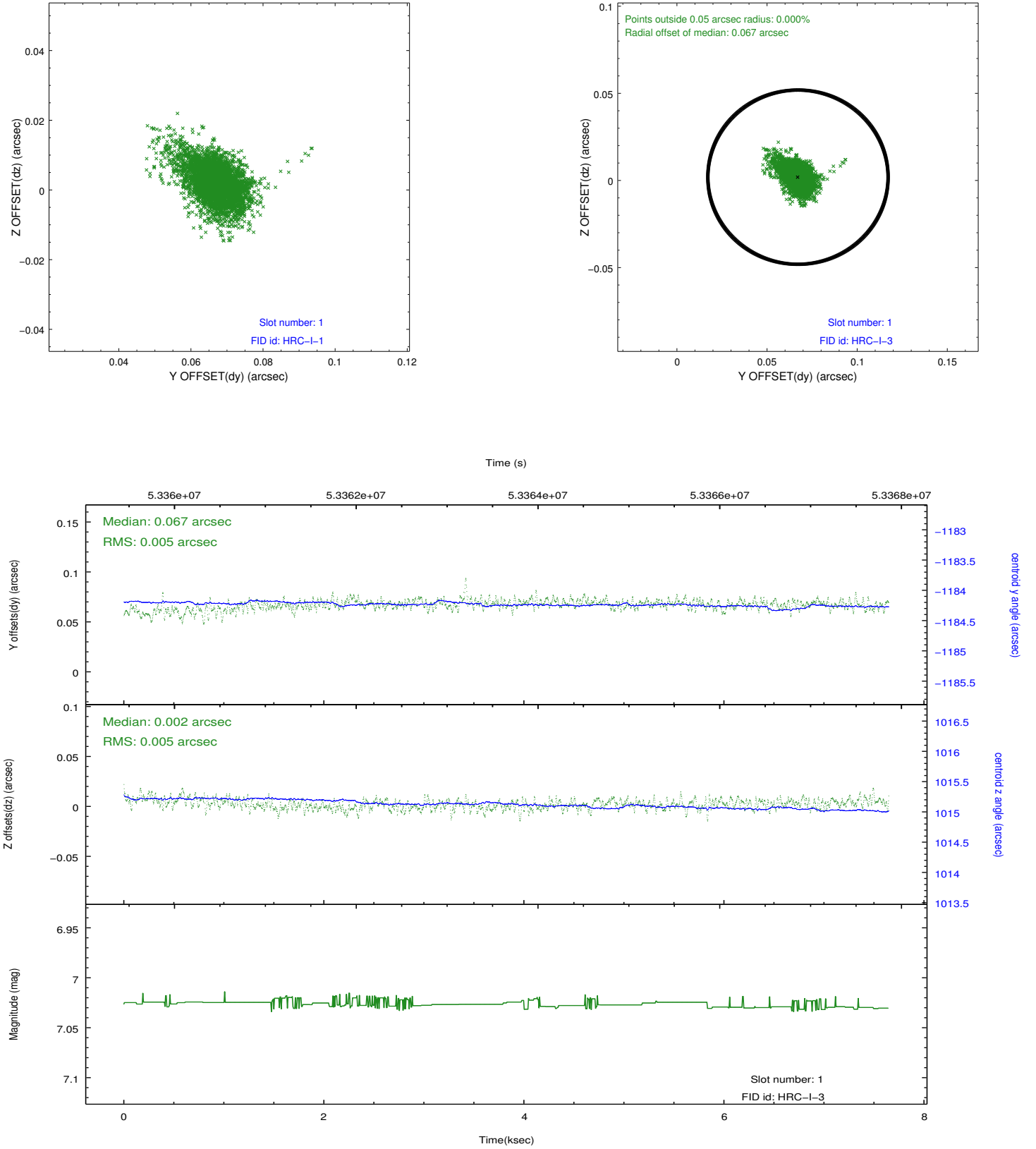


## 2.5 FID Slots

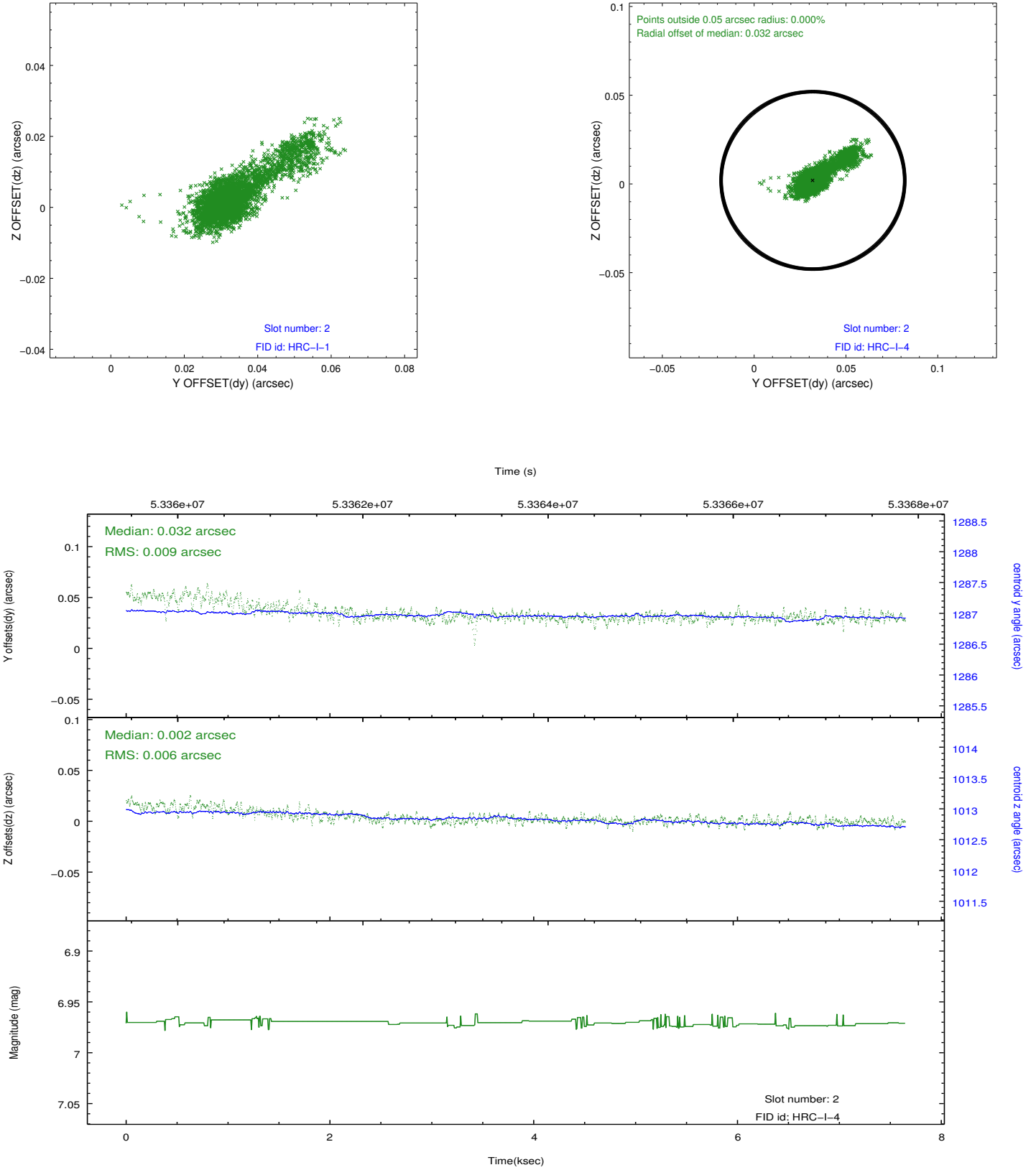
### 2.5.1 Slot 0



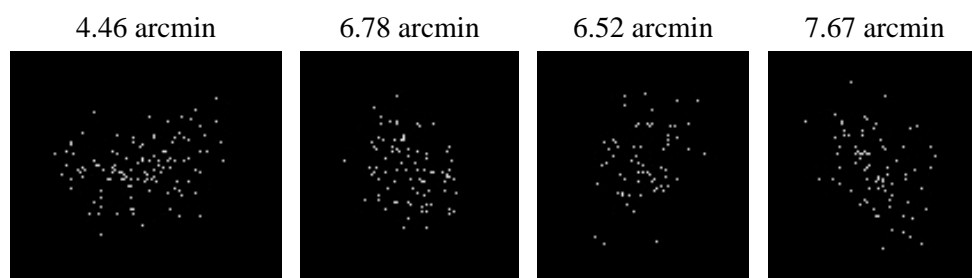
## 2.5.2 Slot 1



### 2.5.3 Slot 2



### 3 Point Sources



## A Summary

### A.1 Status

V&V Scientist	Joy Nichols
V&V Date (YYYY-MM-DD)	2010.02.02
V&V Edition	1
V&V Disposition and Status	OK
V&V Charge Time	6.881

### A.2 Comments