

V&V Reference Report

L2 ASCDS Version : 8.2.1

Observation 1107 - L2 Version 2

Chandra X-Ray Center

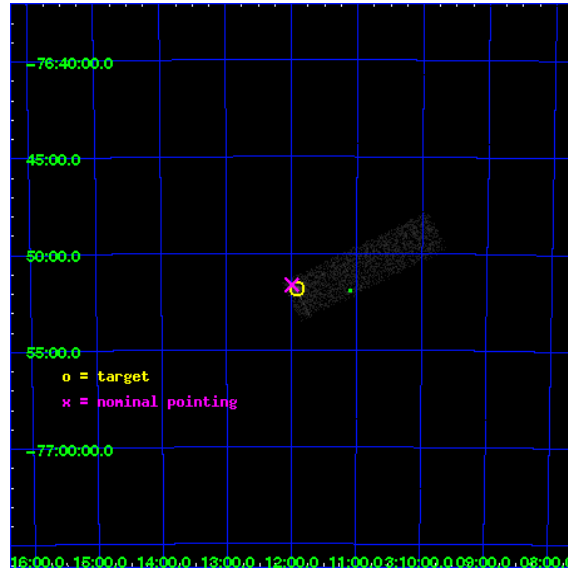
L2 Processing Date : Jan 13 2010

Contents

1	Front	2
2	OBI	3
2.1	OBI	3
2.1.1	Images	3
2.1.2	Bias	3
2.1.3	Parameters	4
2.1.4	Events	4
2.2	Compared Parameters	5
2.3	Aspect	6
2.4	Star Slots	9
2.4.1	Slot 3	9
2.4.2	Slot 4	10
2.4.3	Slot 5	11
2.4.4	Slot 6	12
2.4.5	Slot 7	13
2.5	FID Slots	14
2.5.1	Slot 0	14
2.5.2	Slot 1	15
2.5.3	Slot 2	16
3	Point Sources	17
A	Summary	18
A.1	Status	18
A.2	Comments	18

1 Front

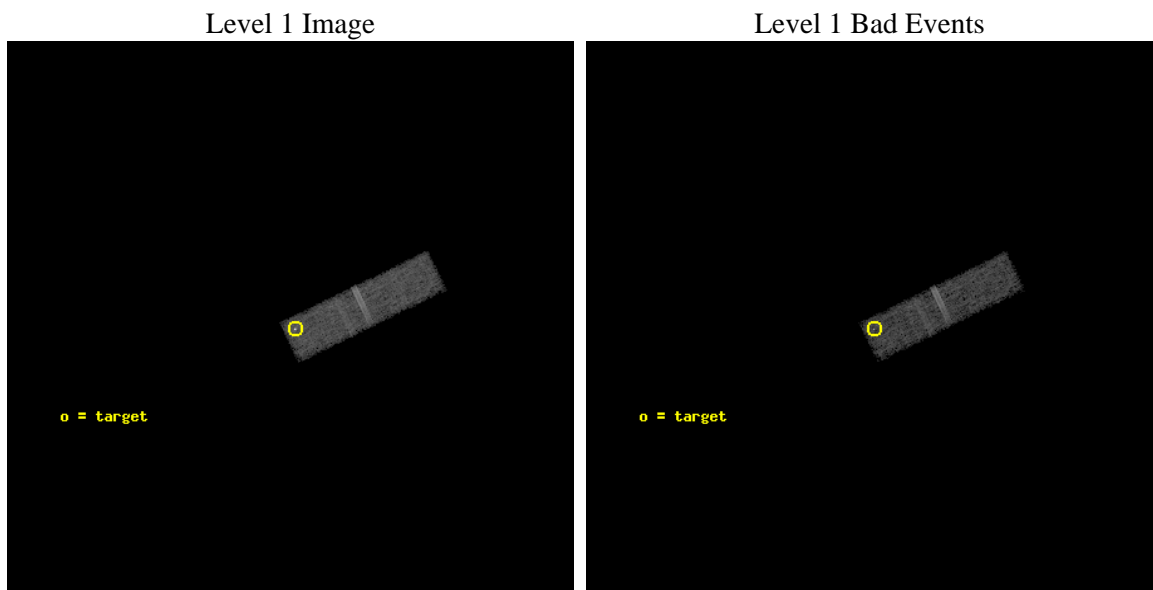
seq_num	780057	Sequence number
obs_id	1107	Observation id
title	 	Proposal title
observer	Dr. CXC Calibration	Principal investigator
object	PKS0312-770	Source name
dtcycle	0	
cycle	P	events from which exps? Prim/Second/Both
ra_targ	47.98	Observer's specified target RA
dec_targ	-76.864167	Observer's specified target Dec
ra_nom	47.998746035975	Nominal RA
dec_nom	-76.86058415102	Nominal Dec
roll_nom	64.213147979576	Nominal Roll
revision	2	Processing version of data
ontime	13924.577389523	Sum of GTIs [s]
livetime	13245.103576071	Livetime [s]
ontime3	13924.577389523	Sum of GTIs [s]
l2events	9899	Number of level 2 events



2 OBI

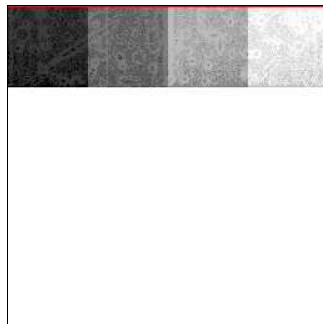
2.1 OBI

2.1.1 Images



2.1.2 Bias

Chip 3



2.1.3 Parameters

obi_num	0	Obi number	sched_exp_time	14000.000000	Scheduled observation exposure time
ascdsver	8.2.1	ASCDS version number	ontime	13924.577389523	Sum of GTIs [s]
caldbver	4.1.5	 	ontime3	13924.577389523	Sum of GTIs [s]
date	2010-01-13T07:29:42	Date and time of file creation	ll events	56624	Number of level 1 events
revision	3	Processing version of data			

2.1.4 Events

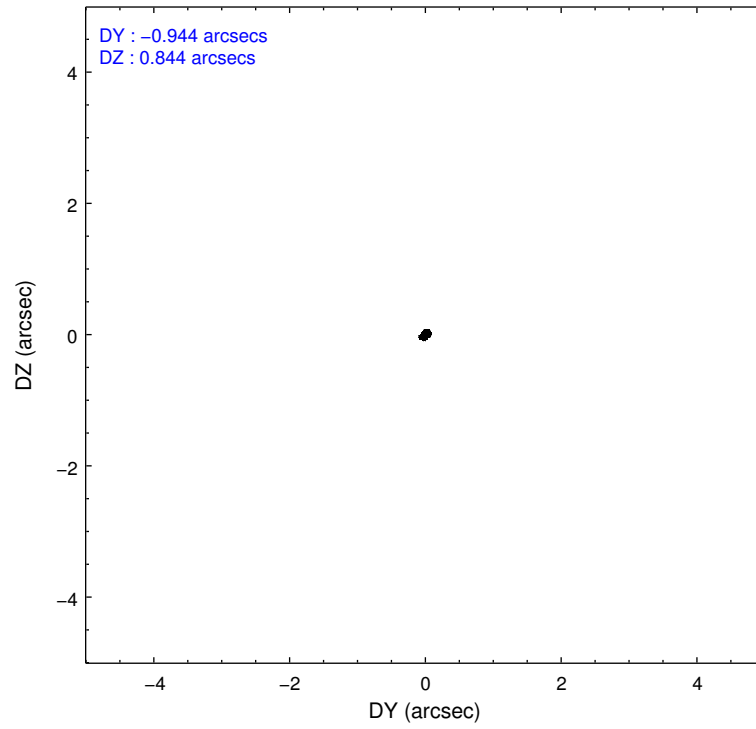
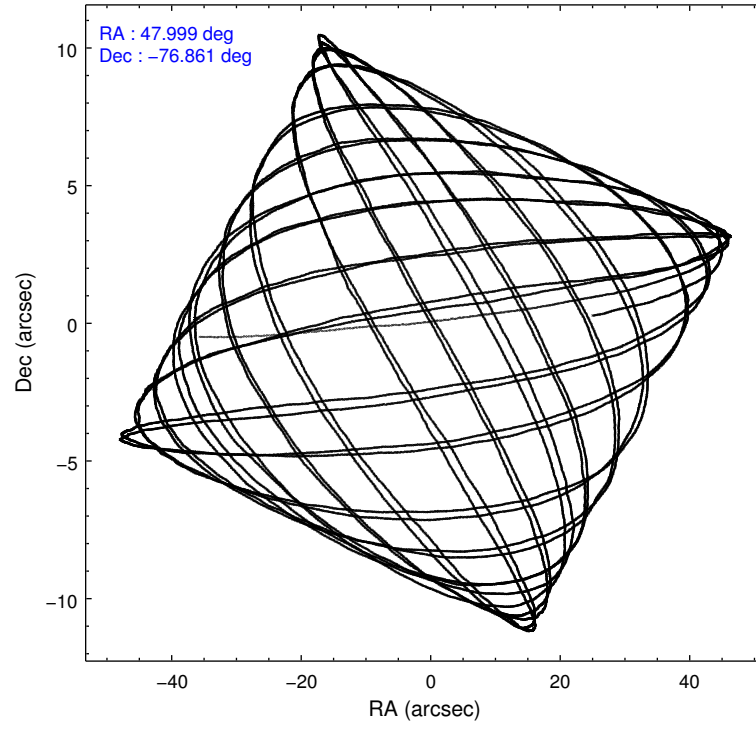
	ccd 3
level 1 events	56624
rejected events	45840
rejected %	80%

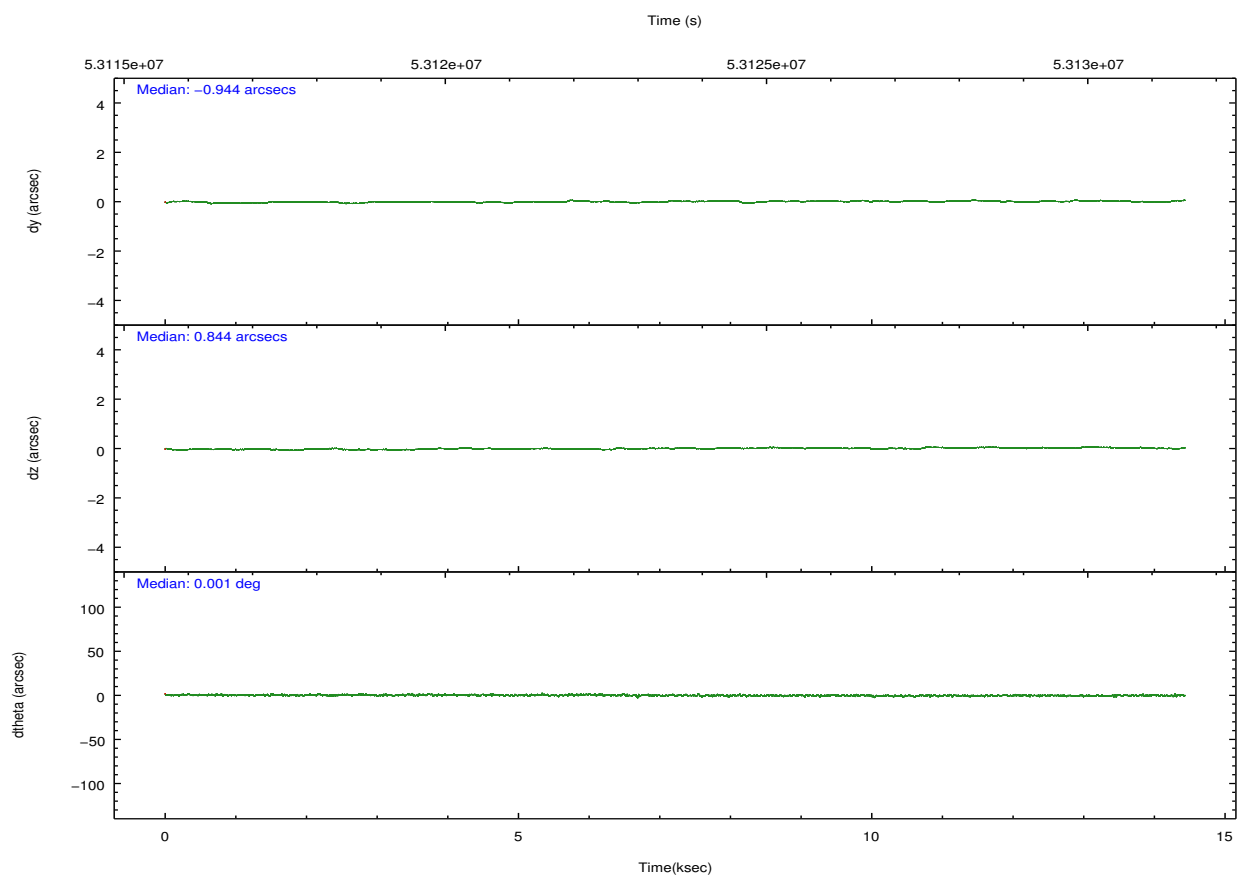
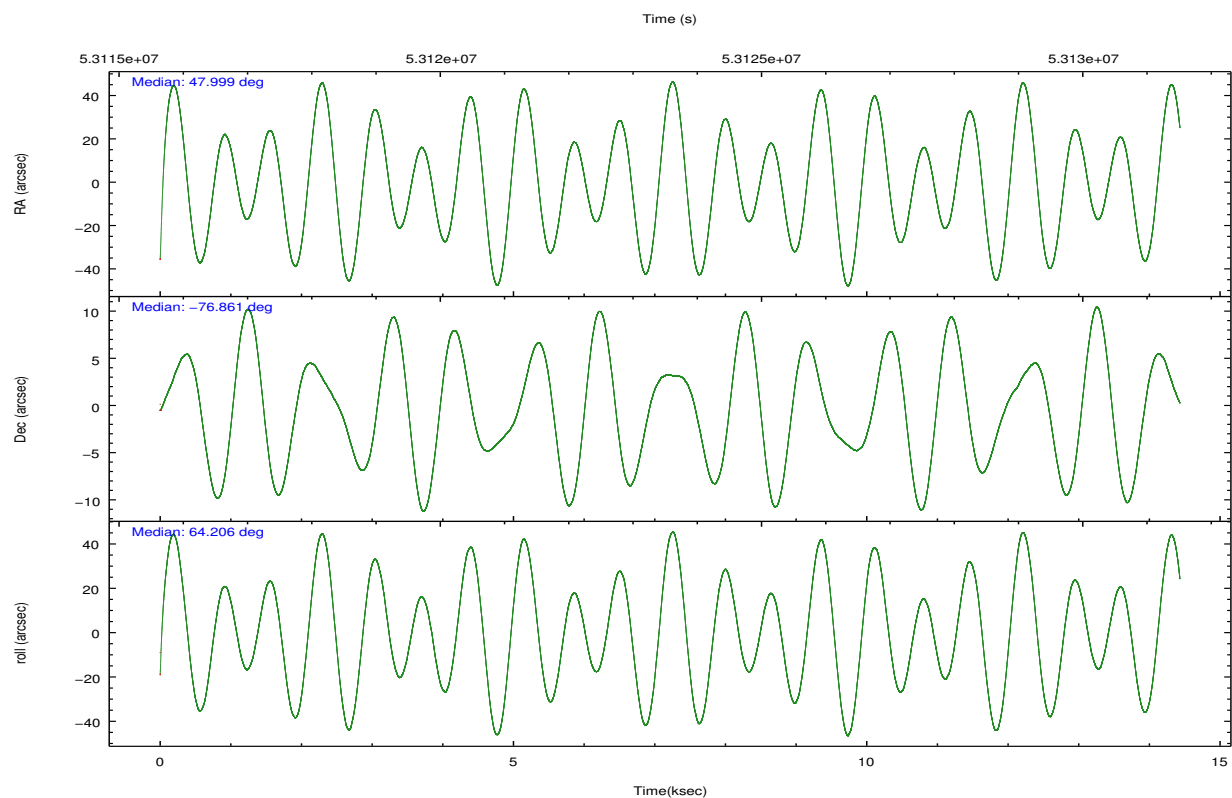
	ccd 3
grade 0 events	5594
	9%
grade 1 events	203
	0%
grade 2 events	2331
	4%
grade 3 events	849
	1%
grade 4 events	822
	1%
grade 5 events	876
	1%
grade 6 events	1188
	2%
grade 7 events	44761
	79%

2.2 Compared Parameters

Parameter	Planned	Actual	Parameter	Planned	Actual
Instrument	ACIS	ACIS	Obspar format version number	6	6
Detector	ACIS-3	ACIS-3	Obspar file type	PREDICTED	ACTUAL
Grating	NONE	NONE	Obspar update status	NONE	UPDATED
Data mode	VFAINT	VFAINT	Number of optional ACIS chips dropped	0	0
Observation mode	POINTING	POINTING	On-chip summing requested	N	N
Pointing RA	48.004667	47.99874603597465	Subarray requested	CUSTOM	1/4
Pointing Dec	-76.888398	-76.86058415101971	Subarray start row	768	768
Pointing Roll	64.010210	64.21314797957622	Subarray row count	256	256
SIM focus pos (mm)	-0.782348	-0.7809083437167272	Alternating exposures requested	N	N
SIM defocus (mm)	0	0.001439871863259334	Primary exposure time	0.000000	0.8
SIM translation stage pos (mm)	-233.592463	-233.5874344608287			
SIM translation stage offset (mm)	0	-0.005018542100998502			
Observation start time	53116793.184000	53115374.070803			
Observation start date	1999-09-07T18:38:49	1999-09-07T18:16:14			
Observation end time	53130793.184000	53130927.421361			
Observation end date	1999-09-07T22:32:09	1999-09-07T22:35:27			
Read mode	TIMED	TIMED			

2.3 Aspect



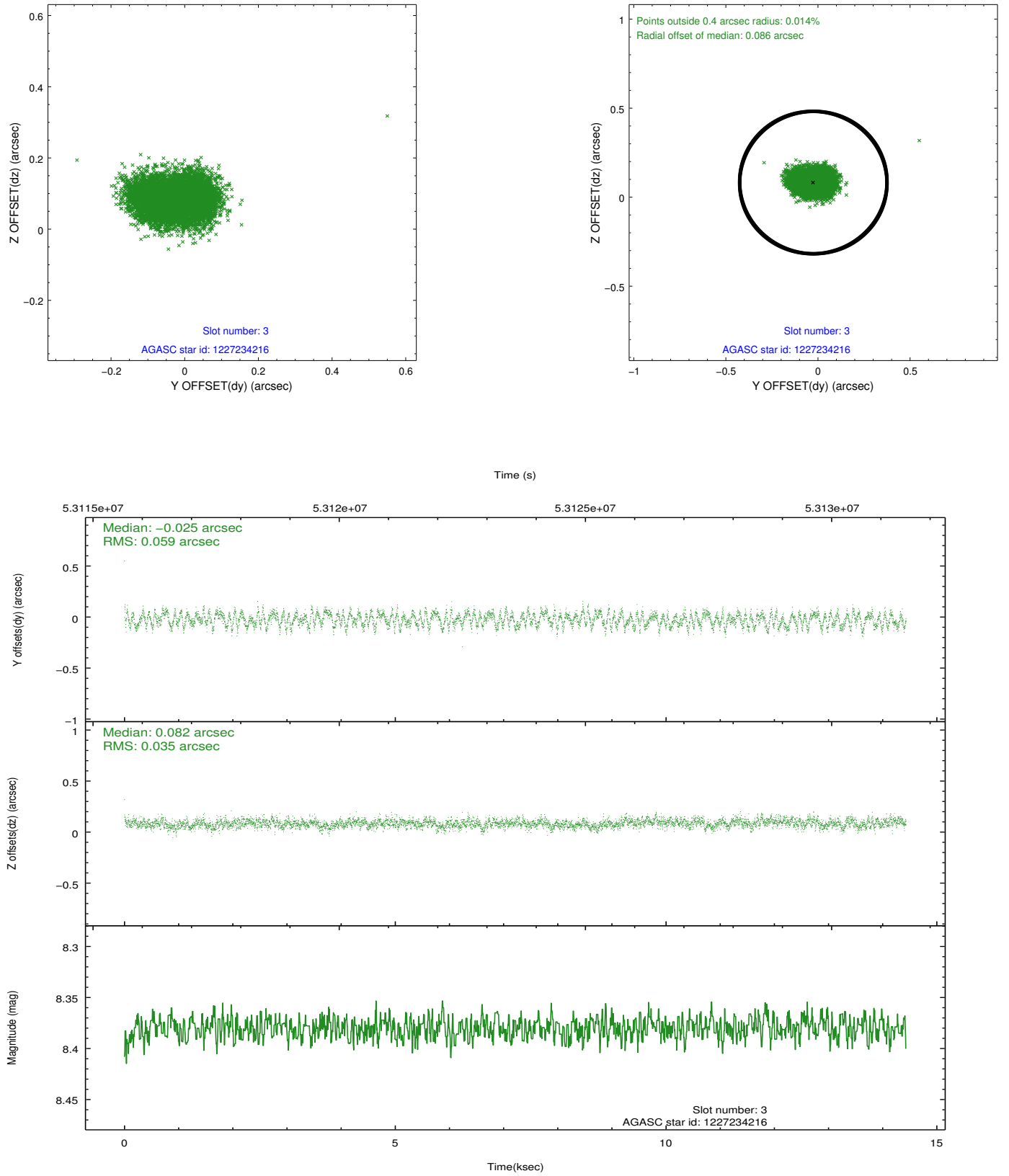


Slot Statistics

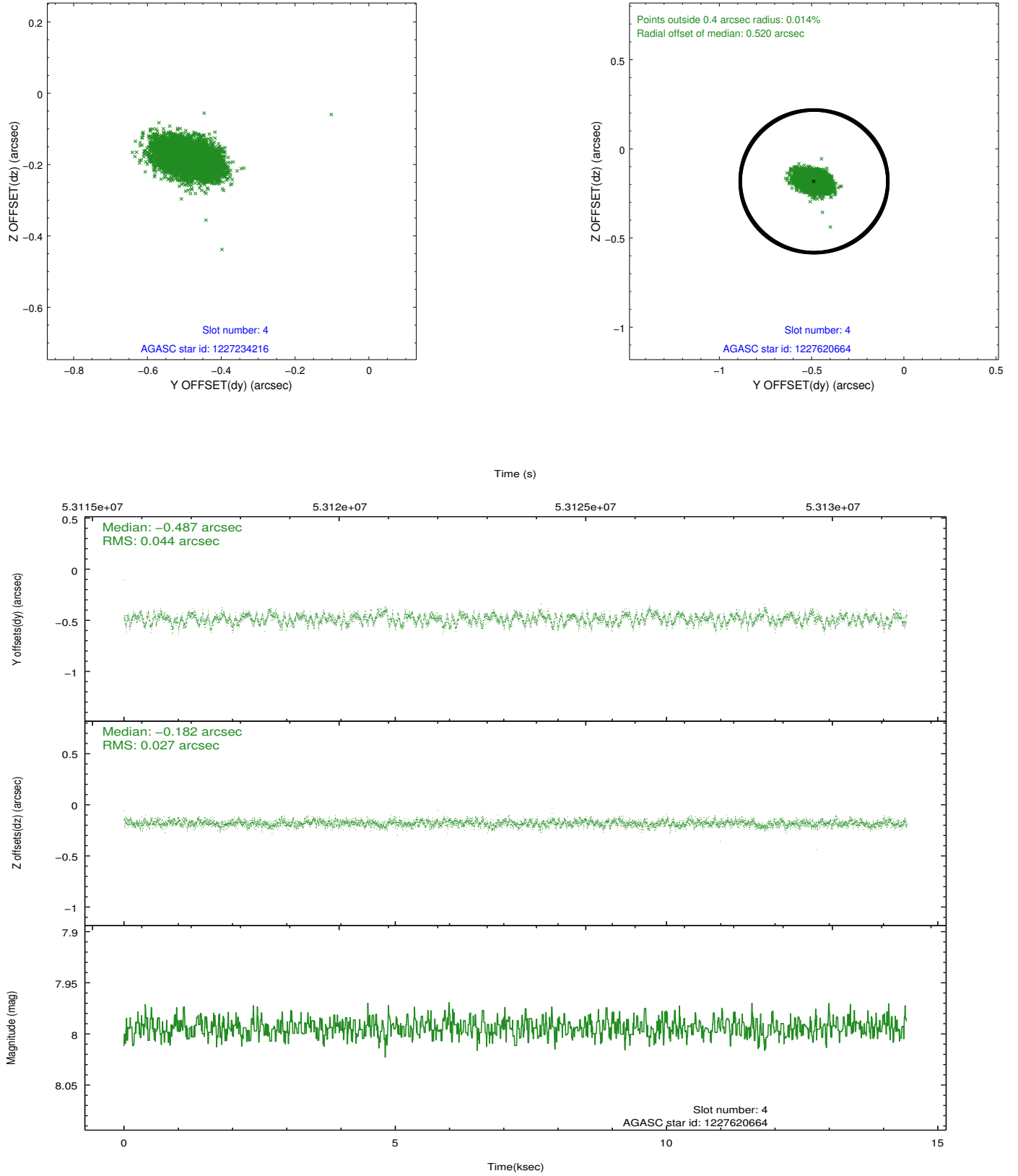
slot	status	id	mag	n_pts	med_dy	med_dz	dr1	dr2	ra	dec	mean_y	mean_z
0	FID	ACIS-I-2	7.21	7041	-0.041	0.039	0.010	0.017	0.000000	0.000000	-753.42	-830.35
1	FID	ACIS-I-4	7.23	7039	0.124	0.021	0.007	0.012	0.000000	0.000000	2160.89	1075.59
2	FID	ACIS-I-5	7.23	7040	-0.184	0.009	0.010	0.016	0.000000	0.000000	-1807.16	1073.76
3	GUIDE	1227234216	8.38	7040	-0.025	0.082	0.074	0.117	51.506981	-76.616205	2081.45	-2229.59
4	GUIDE	1227620664	7.99	7040	-0.487	-0.182	0.054	0.092	46.150563	-77.166043	-1569.18	884.18
5	GUIDE	1227629440	9.11	7038	-0.200	-0.035	0.071	0.115	48.268116	-77.028500	-360.71	-411.96
6	GUIDE	1227104240	9.79	7038	-0.134	0.173	0.093	0.149	48.955462	-76.524572	1521.04	-144.90
7	GUIDE	1227097864	9.92	7033	0.850	-0.037	0.093	0.153	46.669937	-76.763312	-87.42	1181.26

2.4 Star Slots

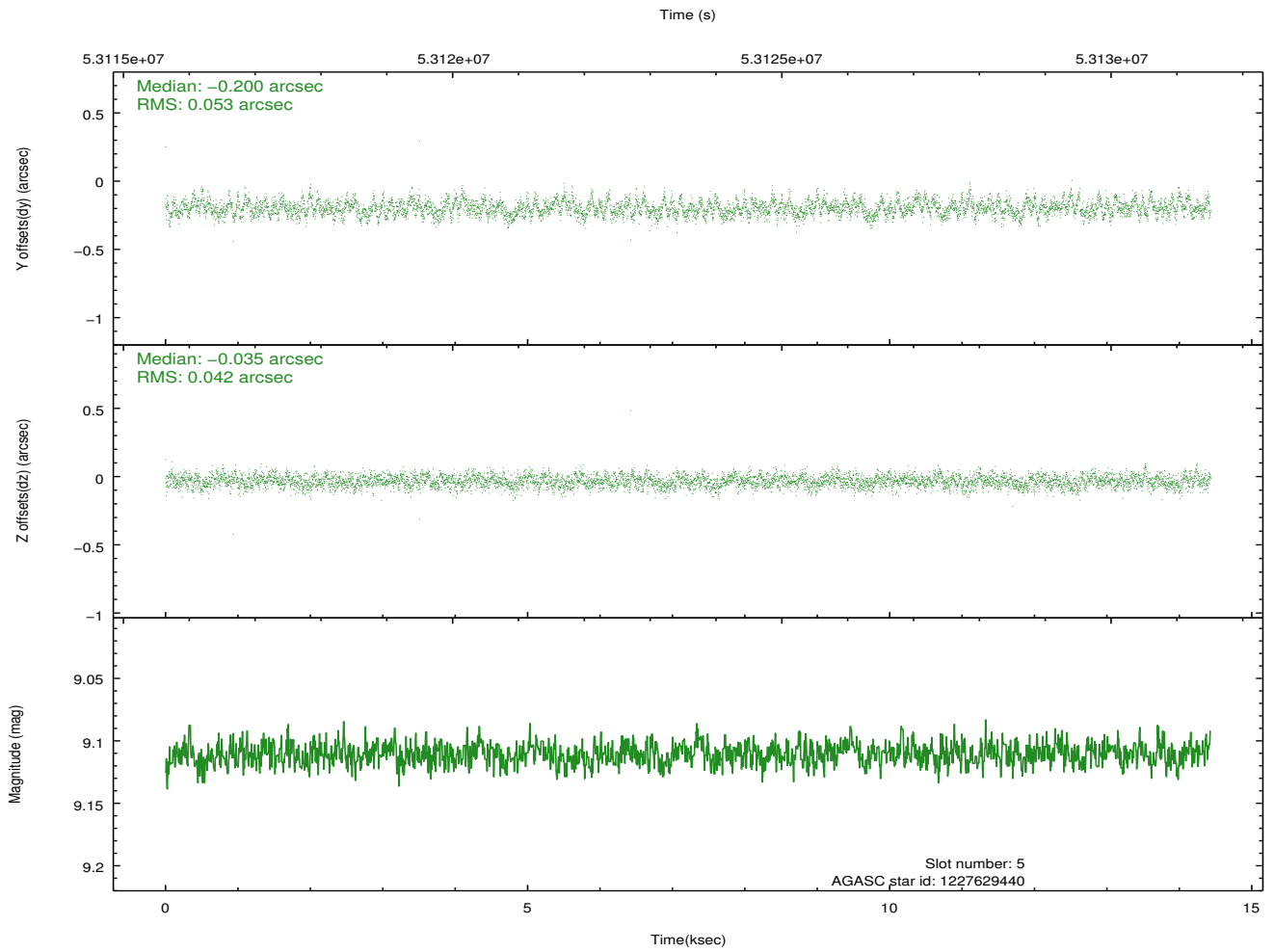
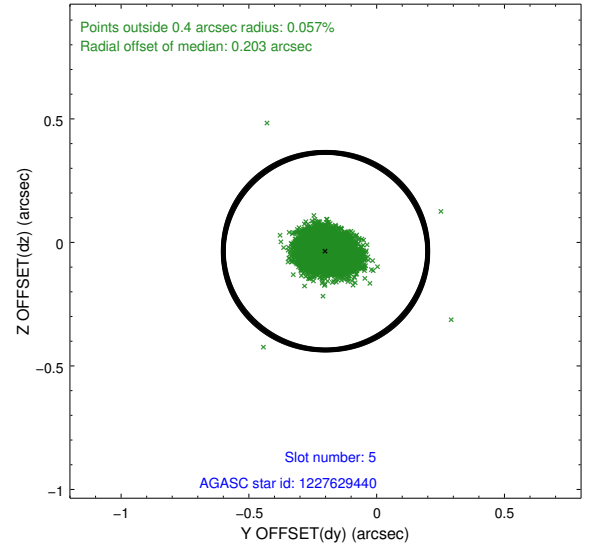
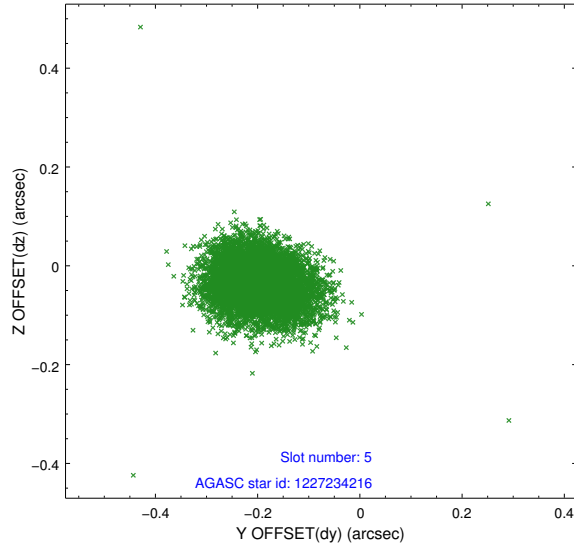
2.4.1 Slot 3



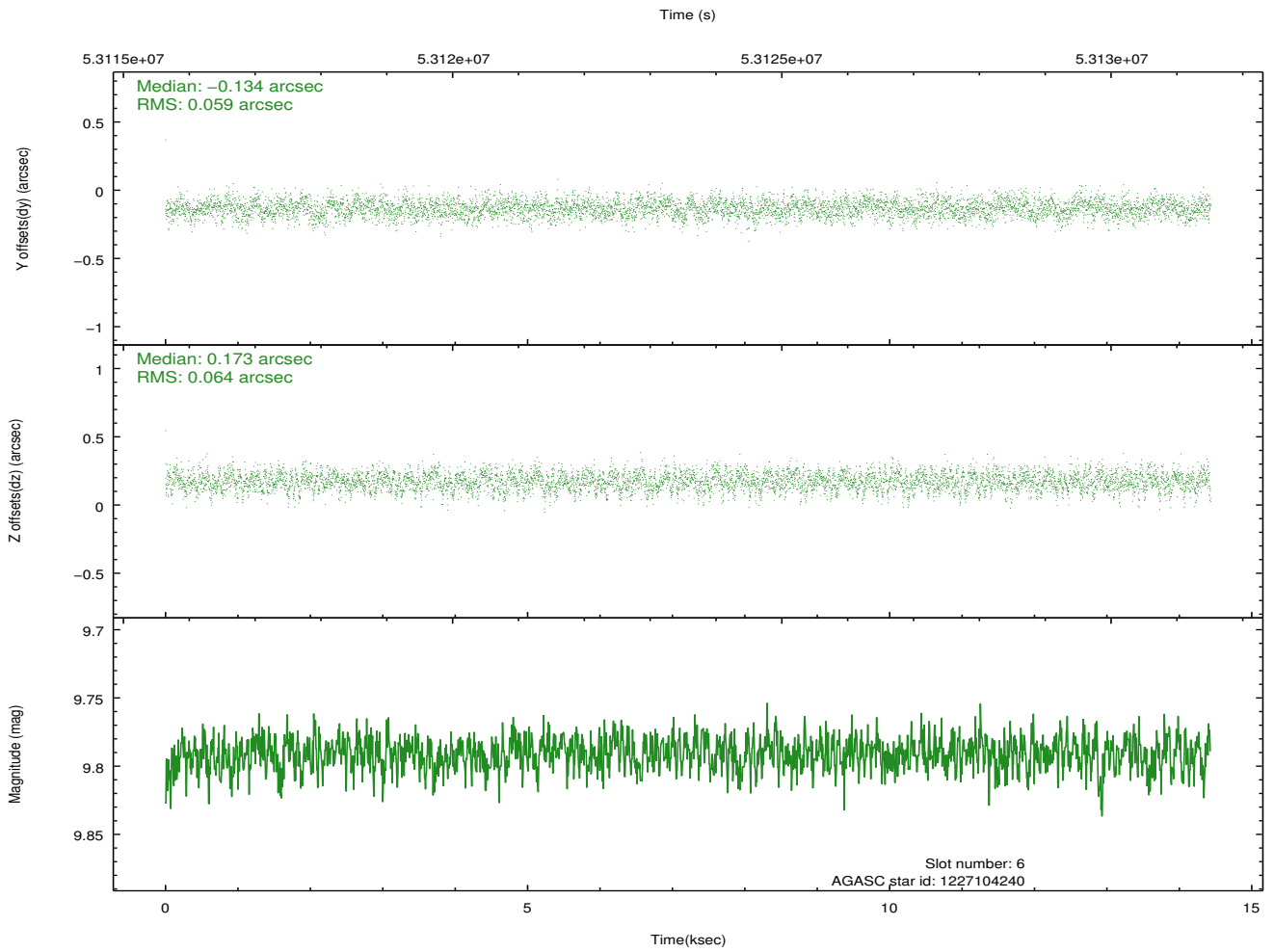
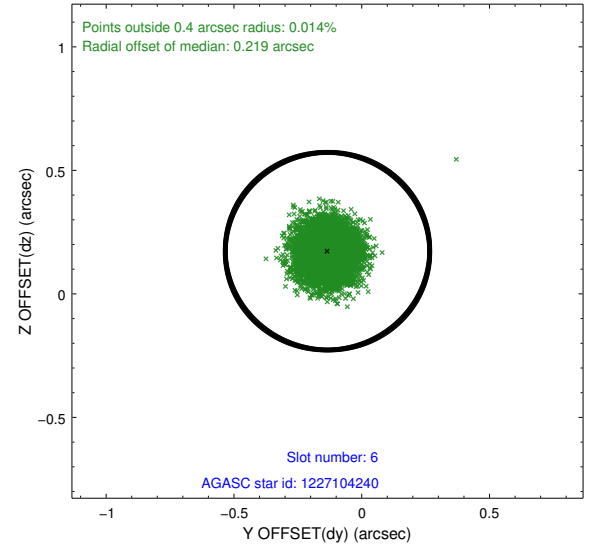
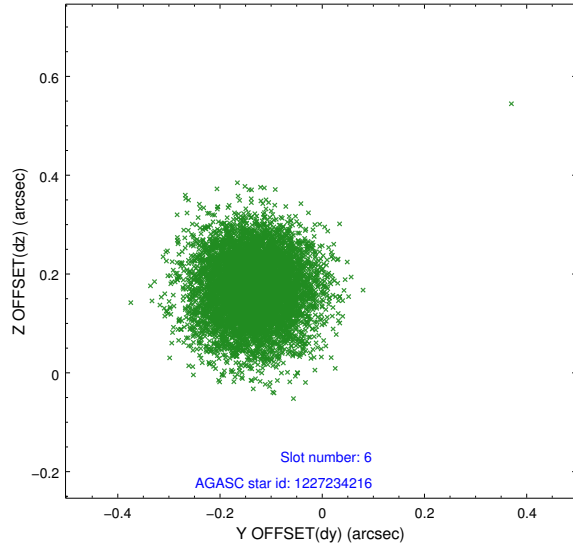
2.4.2 Slot 4



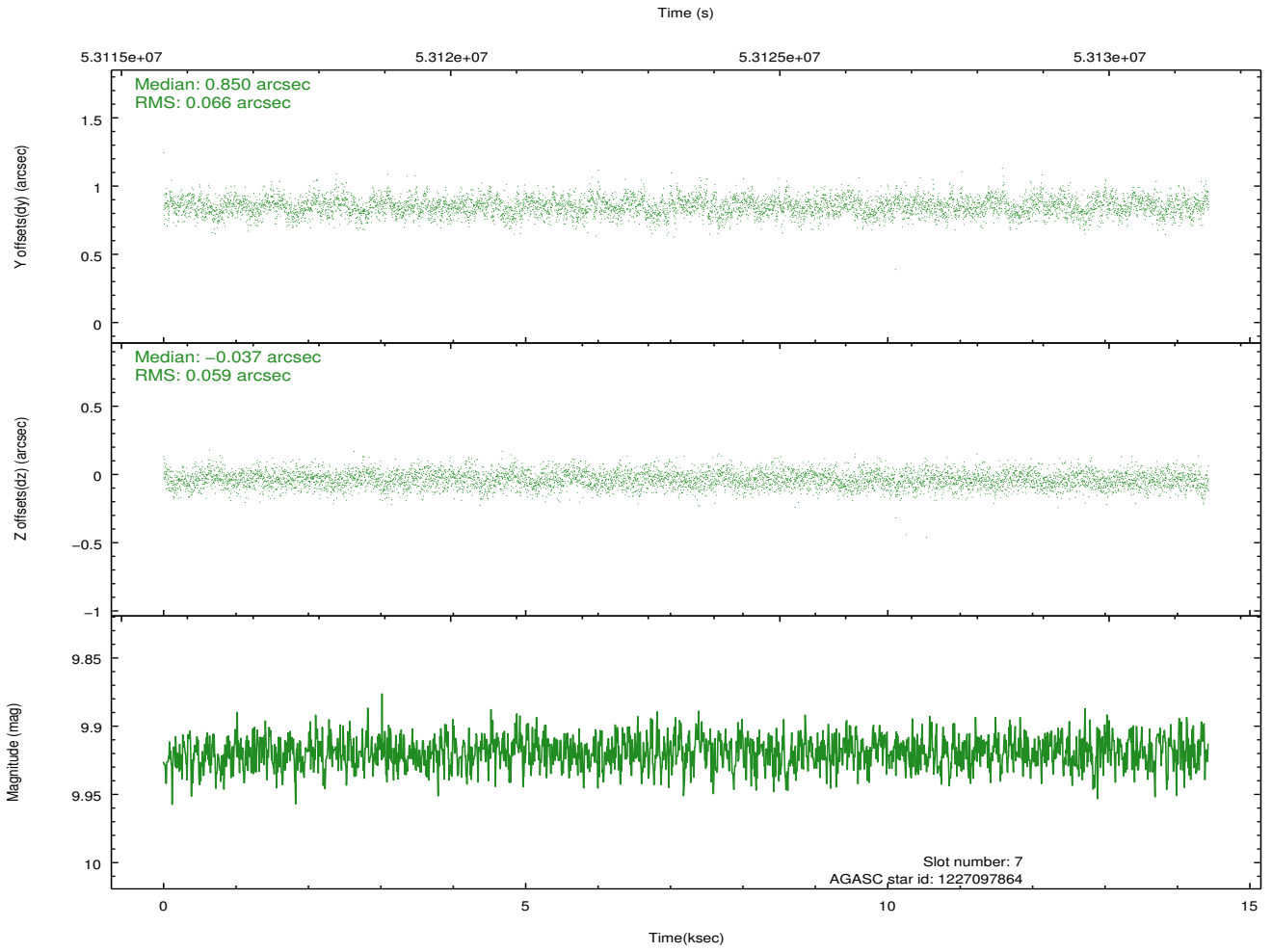
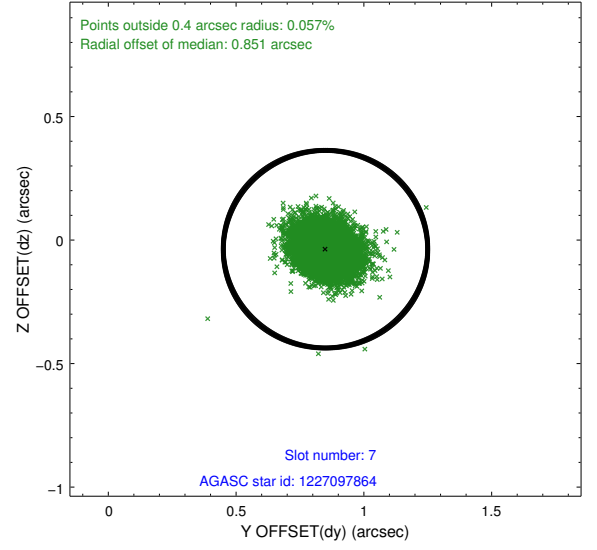
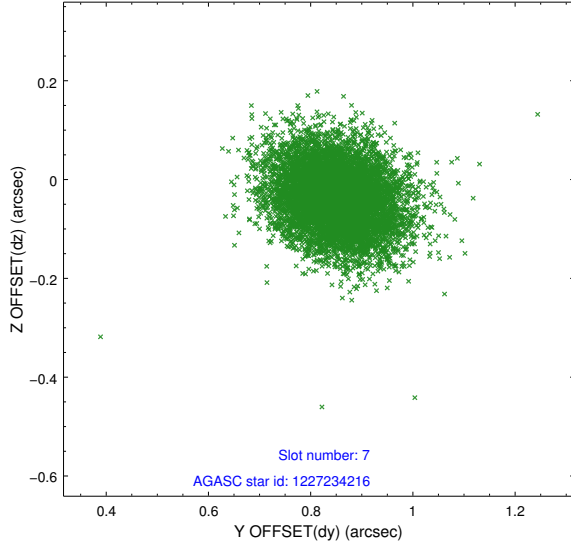
2.4.3 Slot 5



2.4.4 Slot 6

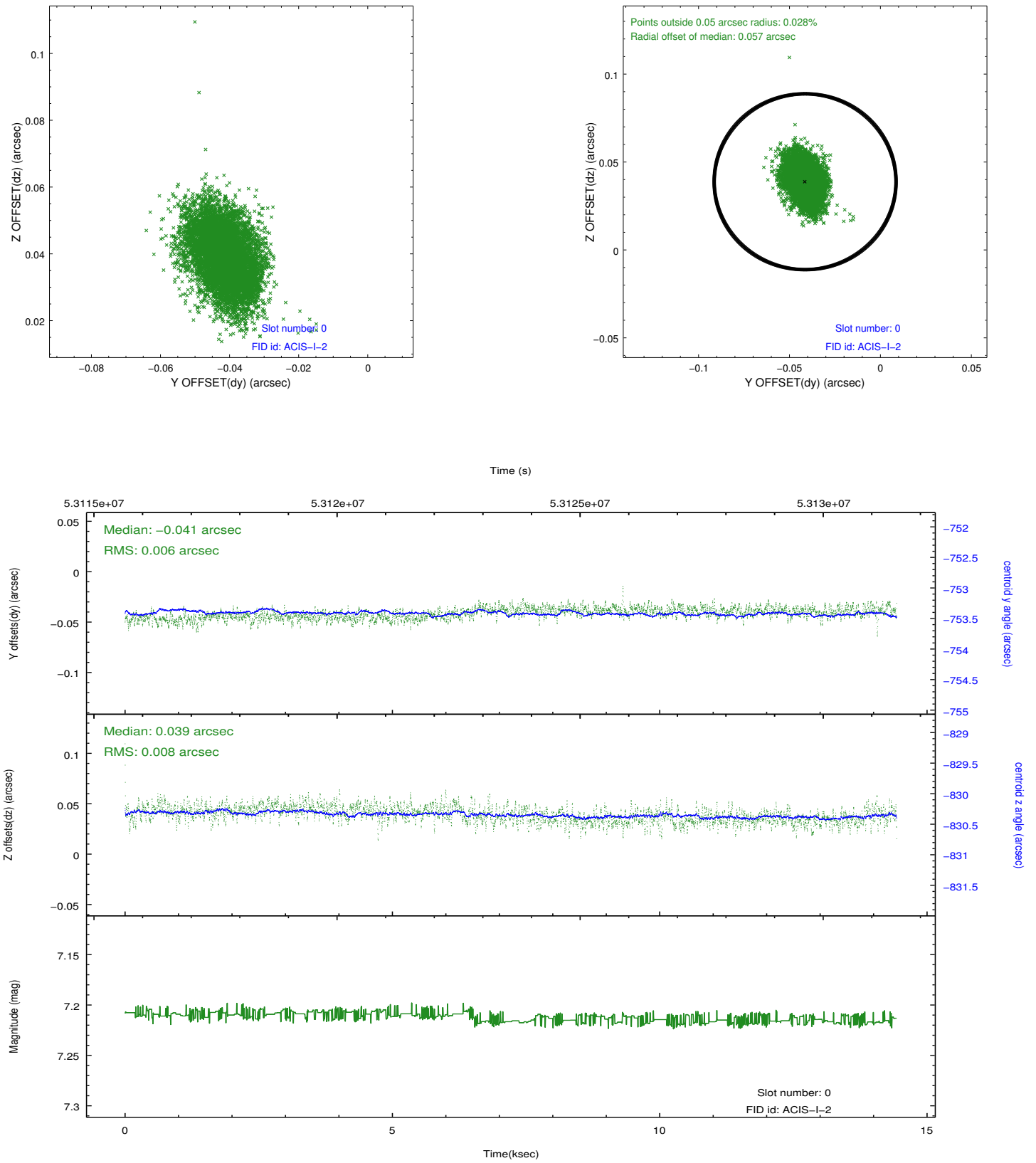


2.4.5 Slot 7

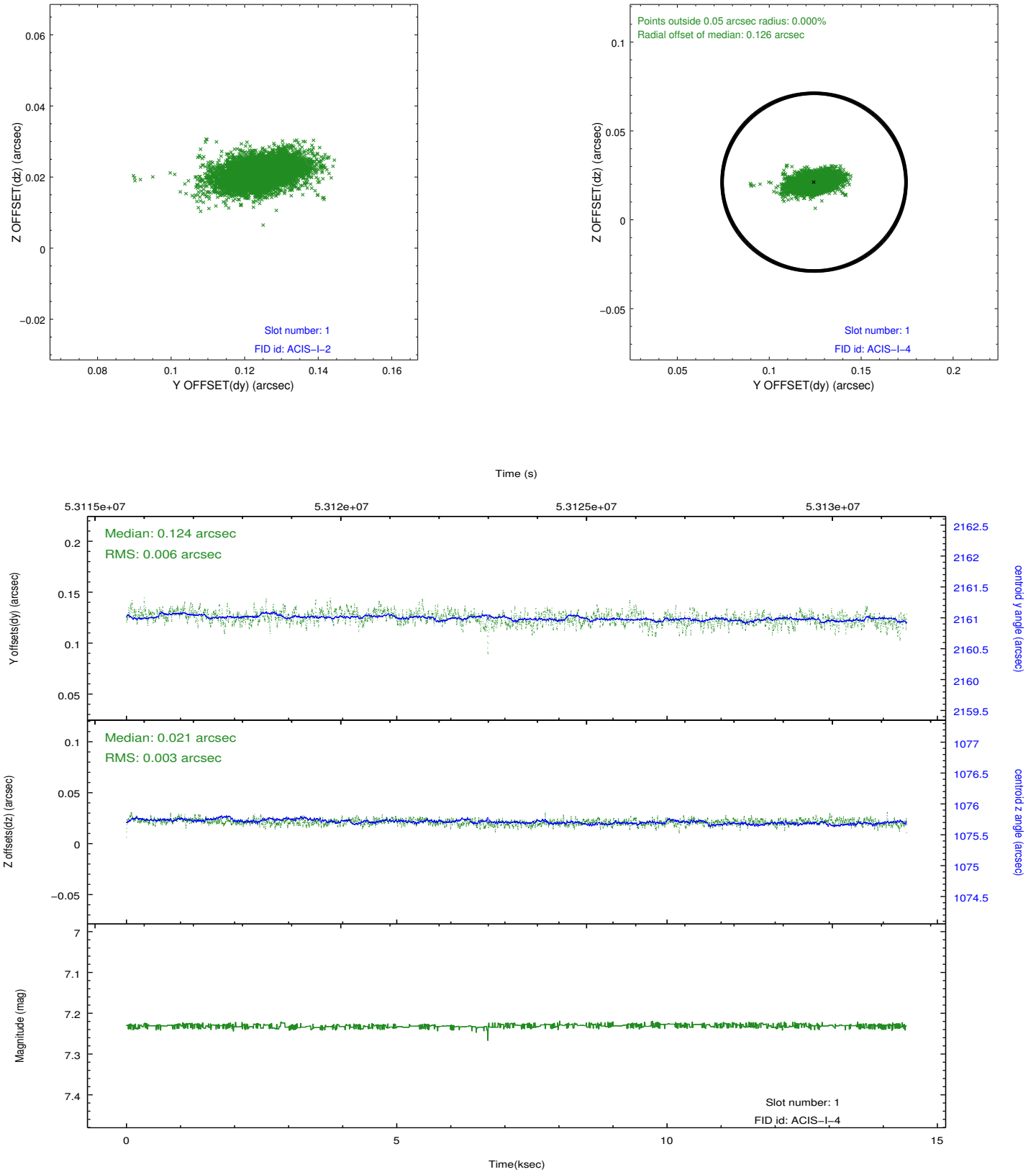


2.5 FID Slots

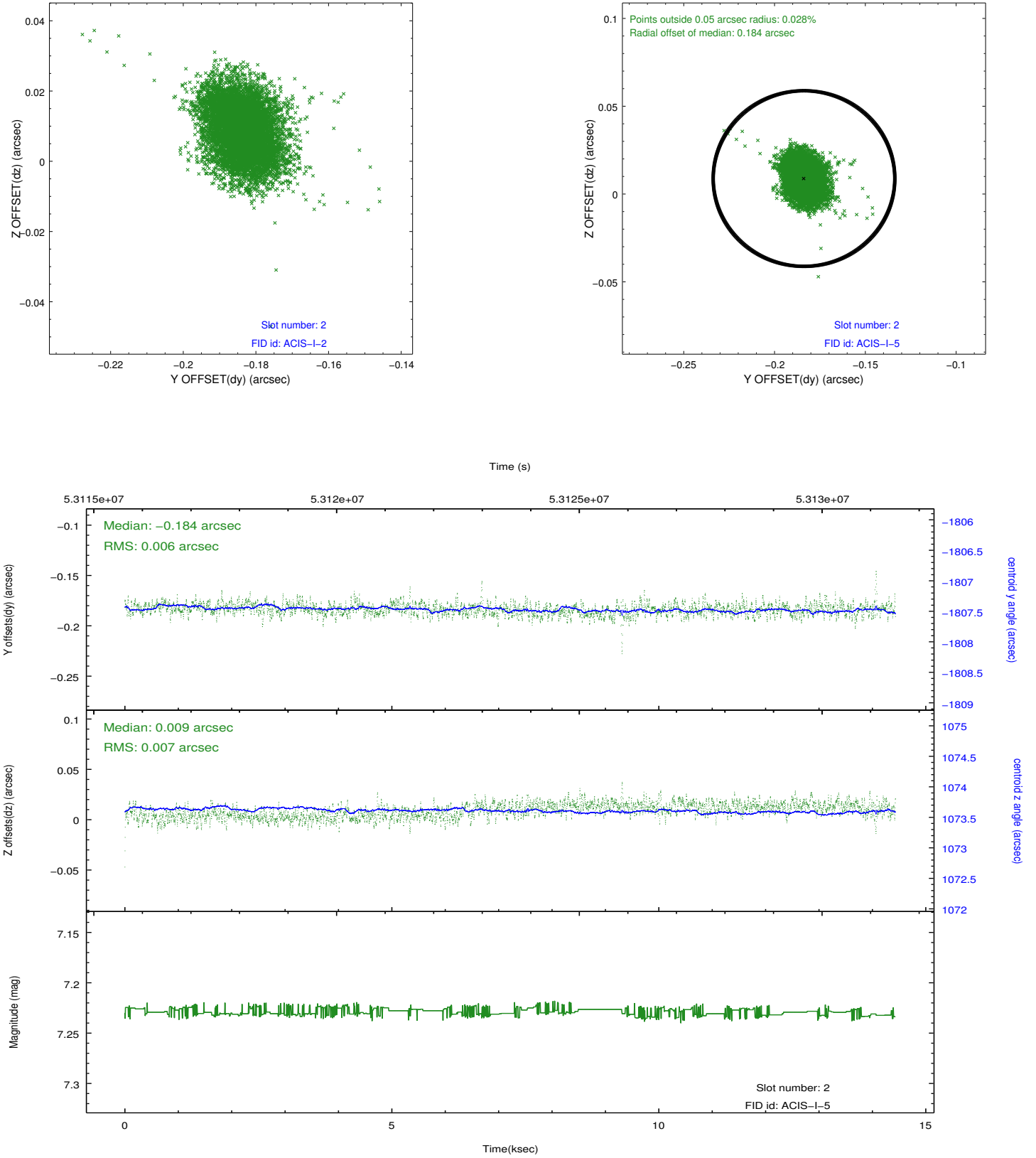
2.5.1 Slot 0



2.5.2 Slot 1



2.5.3 Slot 2



3 Point Sources

3.11 arcmin



A Summary

A.1 Status

V&V Scientist	Joy Nichols
V&V Date (YYYY-MM-DD)	2010.07.29
V&V Edition	1
V&V Disposition and Status	OK
V&V Charge Time	13.921

A.2 Comments

ACIS PSF measurement on I3.

===

The focal plane temperature is approximately -100 C during this observation. This reprocessing of the data applies no CTI correction because none is available for this temperature at present.

The ACIS CTI correction has not been calibrated at this temperature, because it was early in the mission, and ACIS had not yet been lowered to the standard -119.7 C. Both front and back illuminated chips are affected. However a T_GAIN correction has been applied to the BI chips (ACIS-5 and ACIS-7) data included here.

The ACIS spectral response calibration is less accurate at these warmer temperatures than it is at -119.7 C. Users whose science objectives depend on the most accurate spectral response (ie: fitting line-rich spectra) may notice an effect. Users whose science objectives do not depend on the most accurate spectral response should not notice an effect.