

V&V Reference Report

L2 ASCDS Version : 8.4.5

Observation 1738 - L2 Version 6
Chandra X-Ray Center

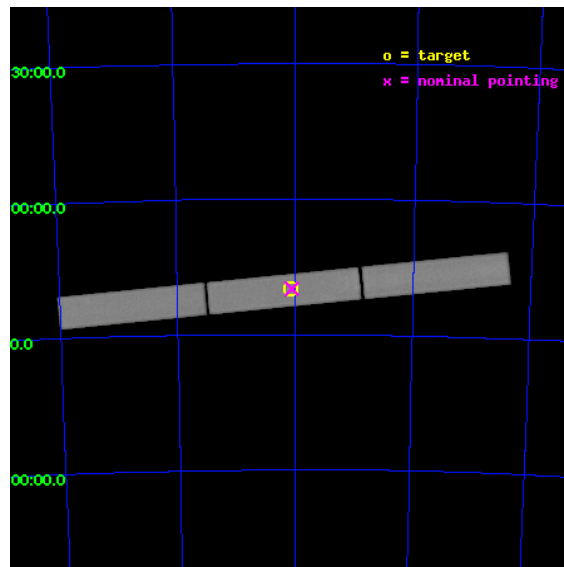
L2 Processing Date : Aug 29 2012

Contents

1	Front	2
2	OBI	3
2.1	OBI	3
2.1.1	Images	3
2.1.2	Parameters	4
2.1.3	Events	4
2.2	Compared Parameters	5
2.3	Aspect	6
2.4	Star Slots	9
2.4.1	Slot 3	9
2.4.2	Slot 4	10
2.4.3	Slot 5	11
2.4.4	Slot 6	12
2.4.5	Slot 7	13
2.5	FID Slots	14
2.5.1	Slot 0	14
2.5.2	Slot 1	15
2.5.3	Slot 2	16
A	Summary	17
A.1	Status	17
A.2	Comments	17

1 Front

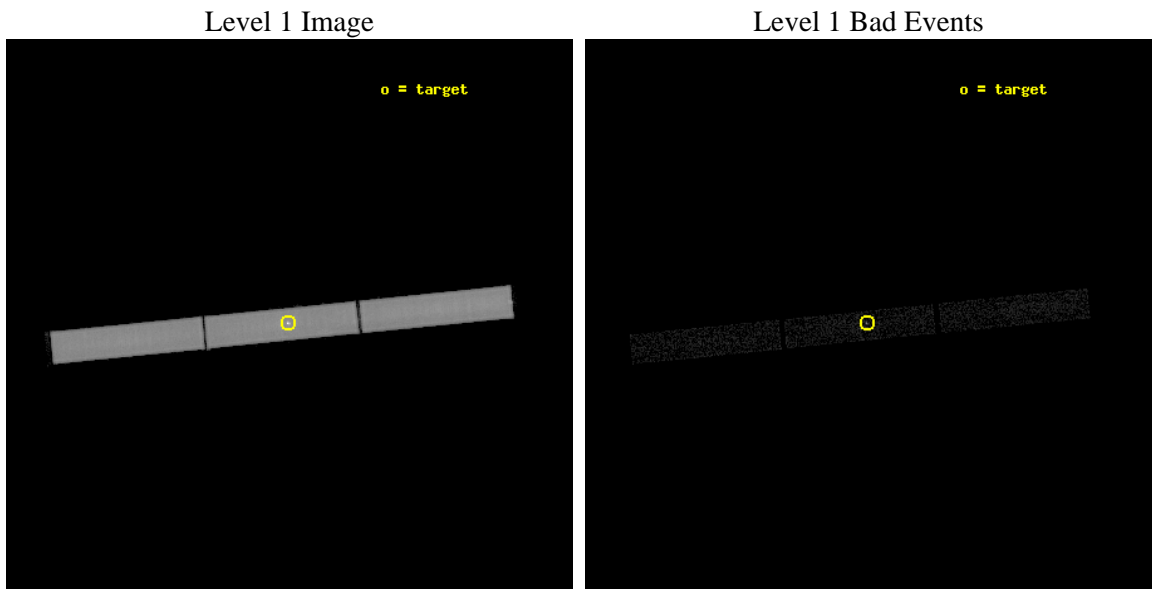
seq_num	590187	Sequence number
obs_id	1738	Observation id
title	VERIFICATION OF AXAF TIMING CAPABILITY	Proposal title
observer	Dr. CXC Calibration	Principal investigator
object	PSR B0540-69	Source name
ra_targ	85.04625	Observer's specified target RA [deg]
dec_targ	-69.332	Observer's specified target Dec [deg]
ra_nom	85.032708116931	Nominal RA [deg]
dec_nom	-69.33130879906	Nominal Dec [deg]
roll_nom	174.26242992764	Nominal Roll [deg]
revision	6	Processing version of data
ontime	10072.931621343	[s]
livetime	9987.4218257931	Ontime multiplied by DTCOR
l2events	918045	Number of level 2 events



2 OBI

2.1 OBI

2.1.1 Images



2.1.2 Parameters

obi_num	0	Obi number	sched_exp_time	9885.000000	[s] Scheduled observation exposure time
ascdsver	8.4.5	Processing system revision	ontime	10072.931621343	[s]
caldsver	4.5.1.1	 	l1events	1225106	Number of level 1 events
date	2012-08-29T11:43:00	Date and time of file creation			
revision	5	Processing version of data			

2.1.3 Events

Level 1 Events

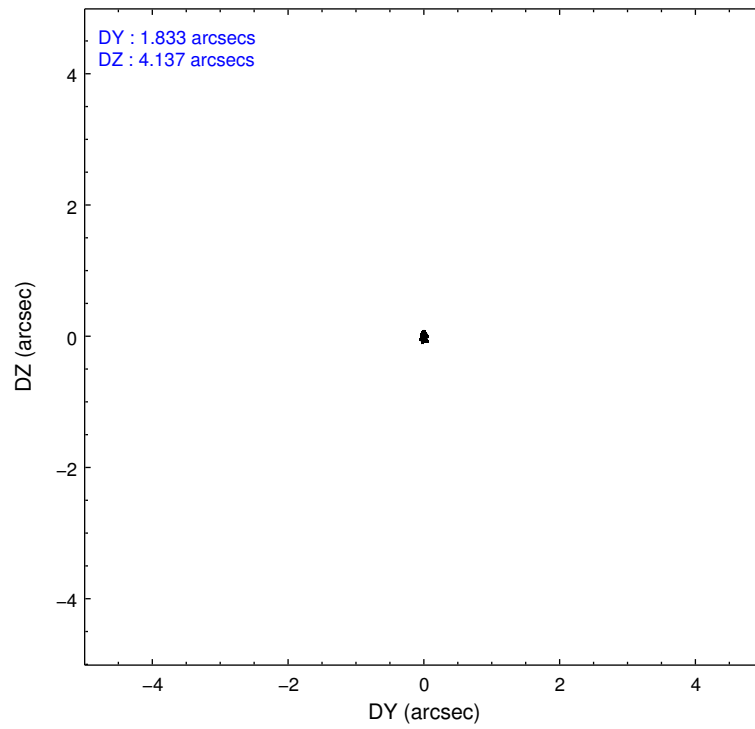
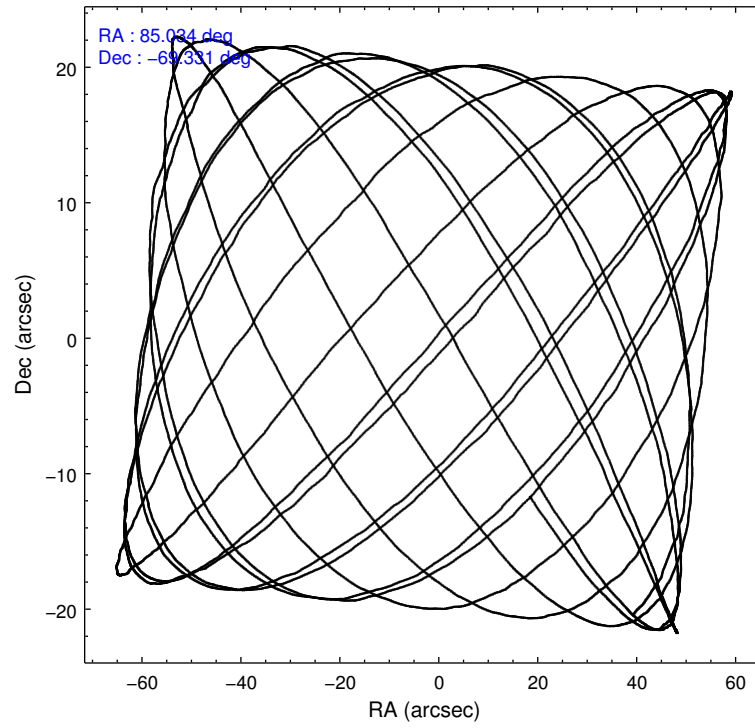
	segment 1	segment 2	segment 3
level 1 events	395531	408879	420696
rejected events	9006	9530	9561
rejected %	2%	2%	2%

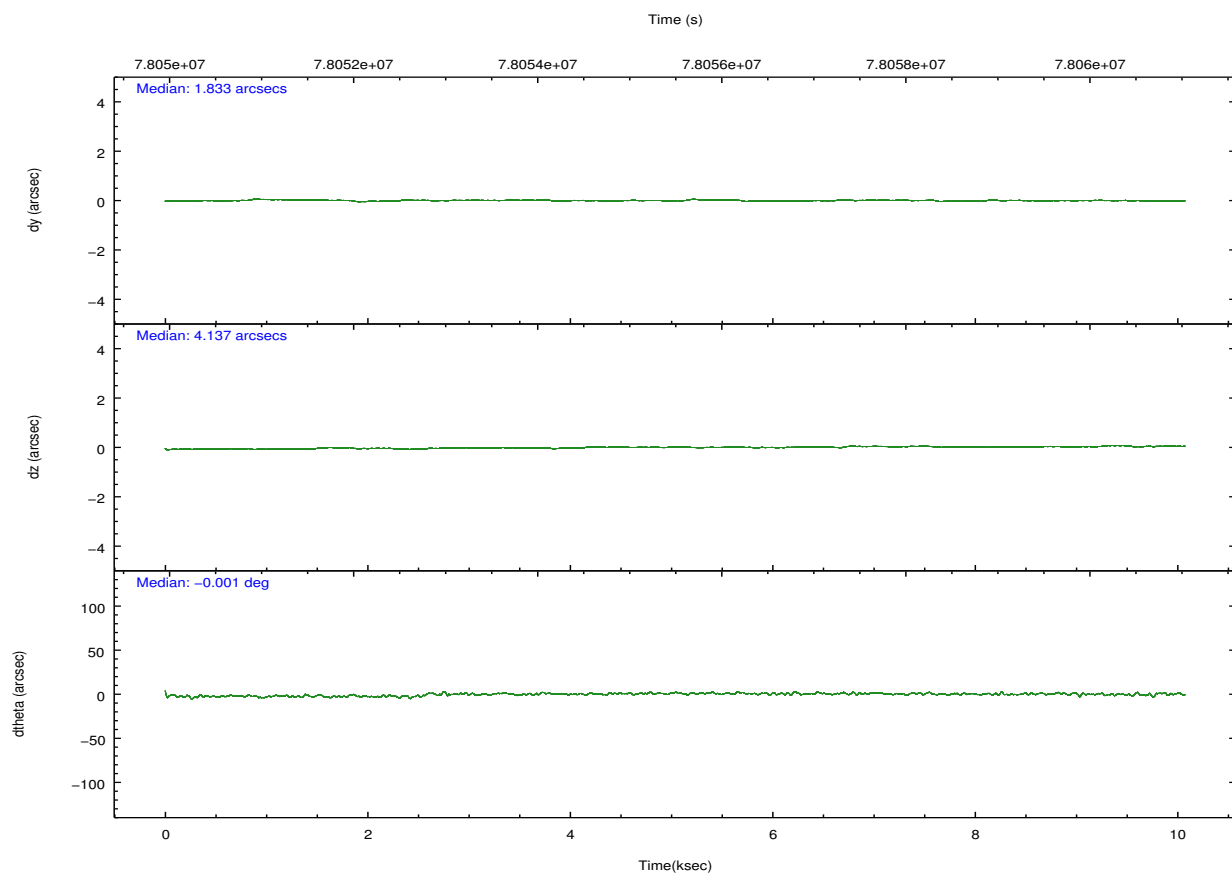
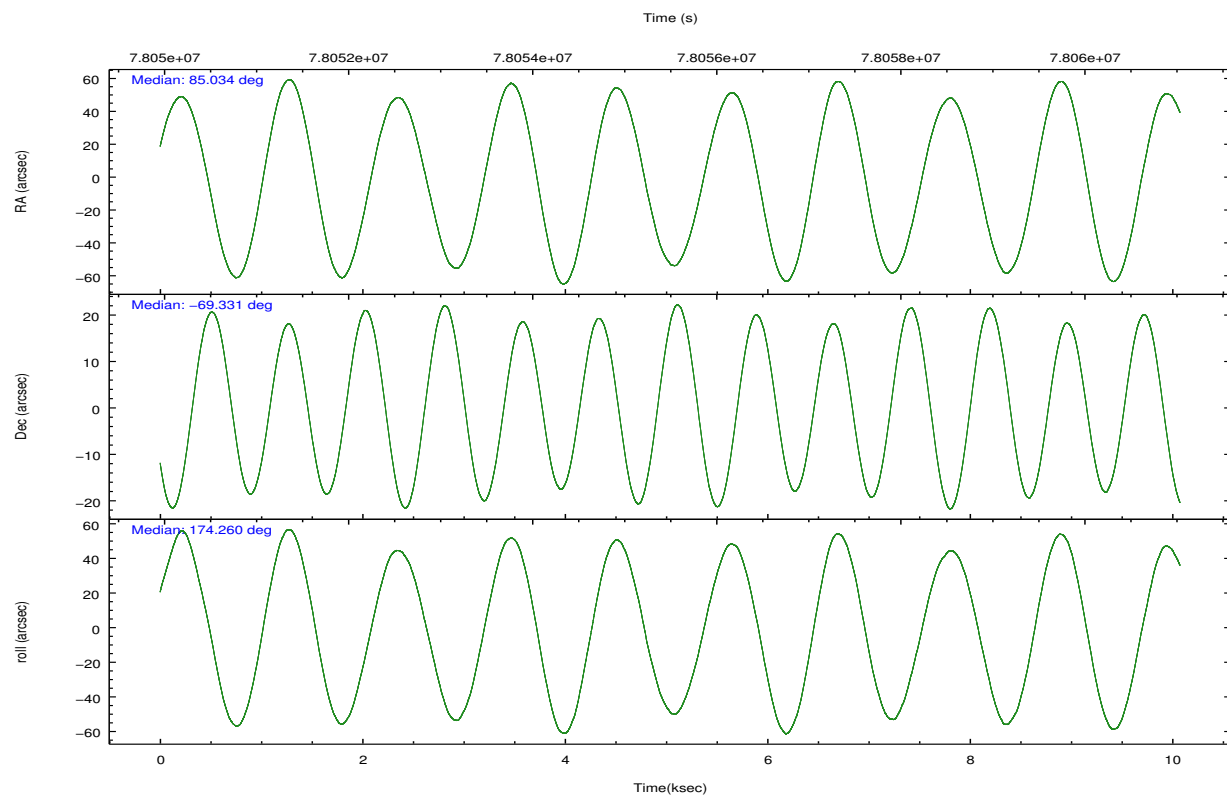
2.2 Compared Parameters

Parameter	Planned	Actual
Instrument	HRC	HRC
Detector	HRC-S	HRC-S
Grating	NONE	NONE
Data mode	OBSERVING	OBSERVING
Observation mode	POINTING	POINTING
[deg] Pointing RA	85.105184	85.03270811693066
[deg] Pointing Dec	-69.318350	-69.33130879906031
[deg] Pointing Roll	174.262895	174.2624299276363
[mm] SIM focus pos	-1.429586	-1.428180813131781
[mm] SIM defocus	0.1037507710433287	0.1051558262725154
[mm] SIM translation stage pos	250.455976	250.466033080201
[mm] SIM translation stage offset	0	-0.01005468664627074
[s] Observation start time (MET)	78050642.184000	78050266.624726
Observation start date	2000-06-22T08:42:58	2000-06-22T08:37:46
[s] Observation end time (MET)	78060527.184000	78060661.15010899
Observation end date	2000-06-22T11:27:43	2000-06-22T11:31:01

Parameter	Planned	Actual
Obspar format version number	7	7
Obspar file type	PREDICTED	ACTUAL
Obspar update status	NONE	UPDATED

2.3 Aspect



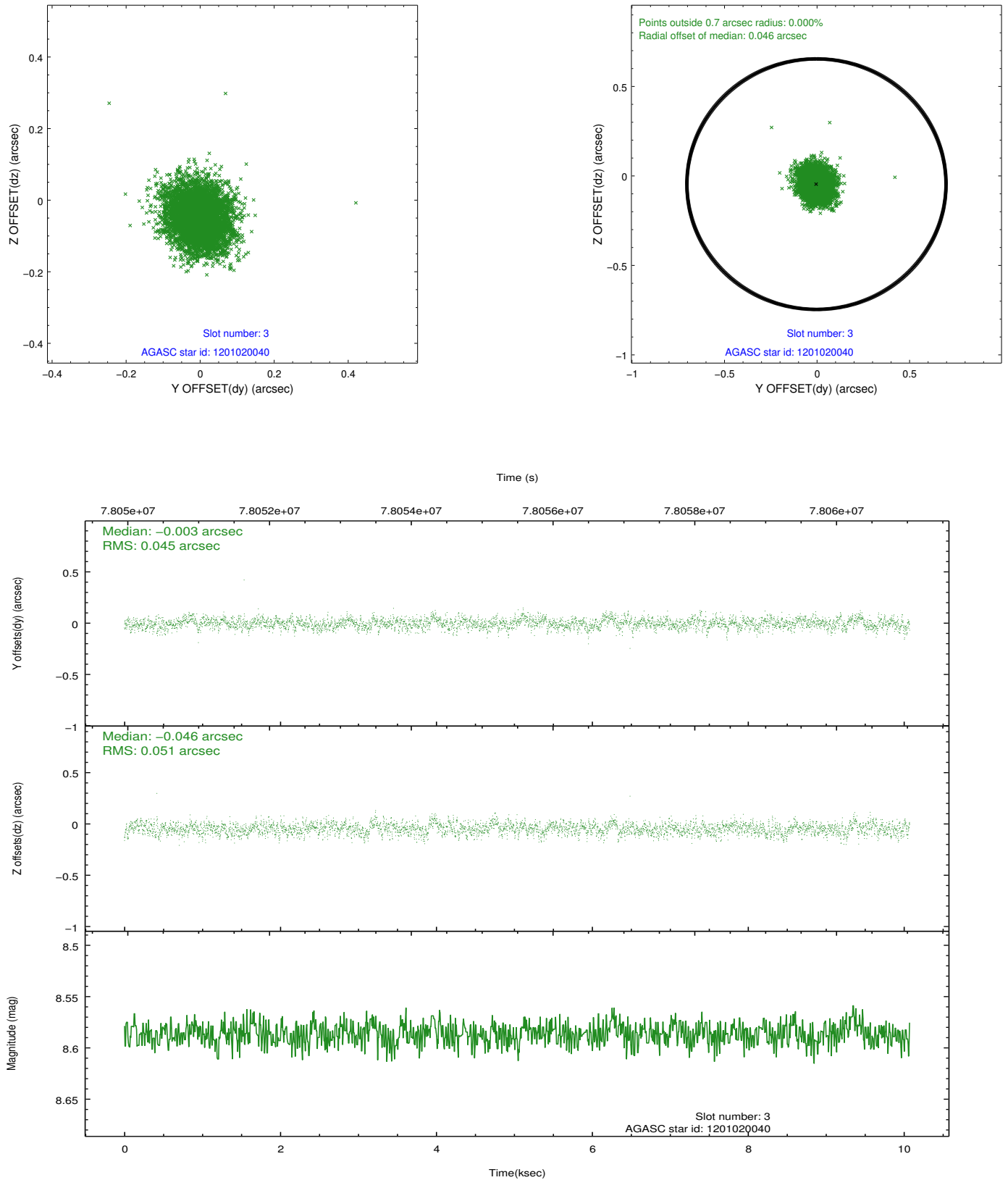


Slot Statistics

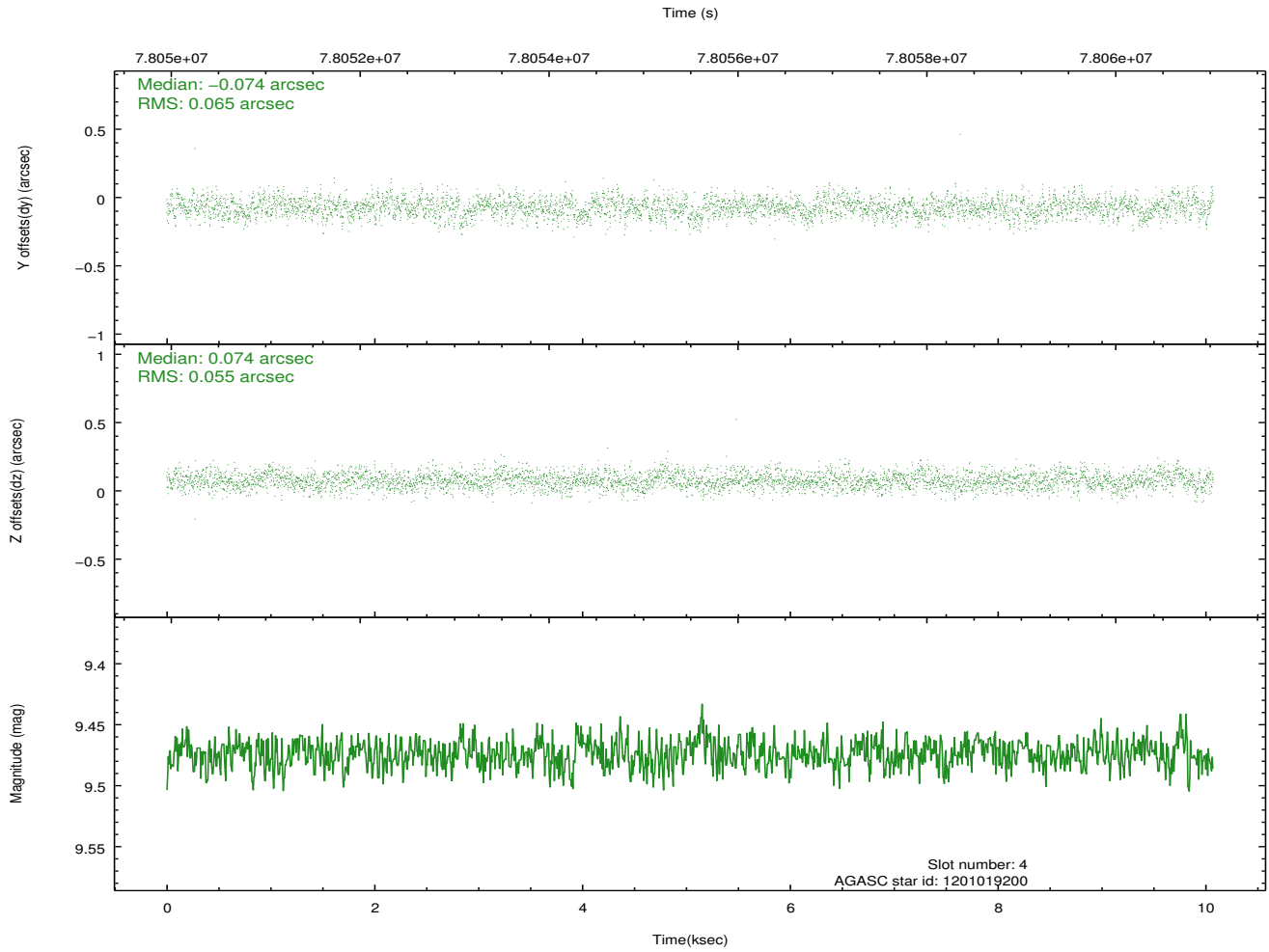
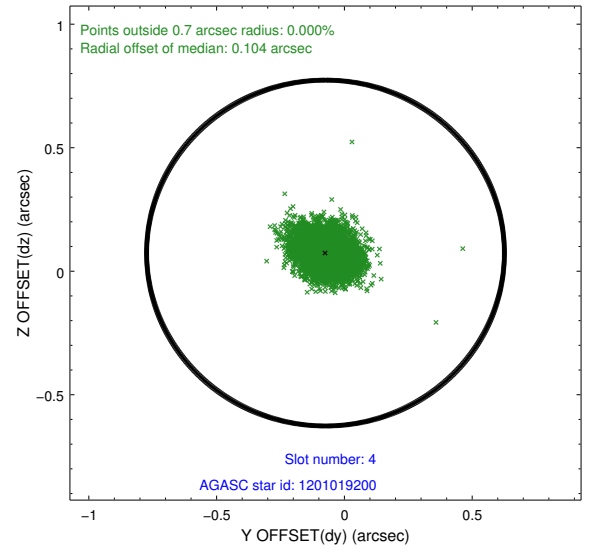
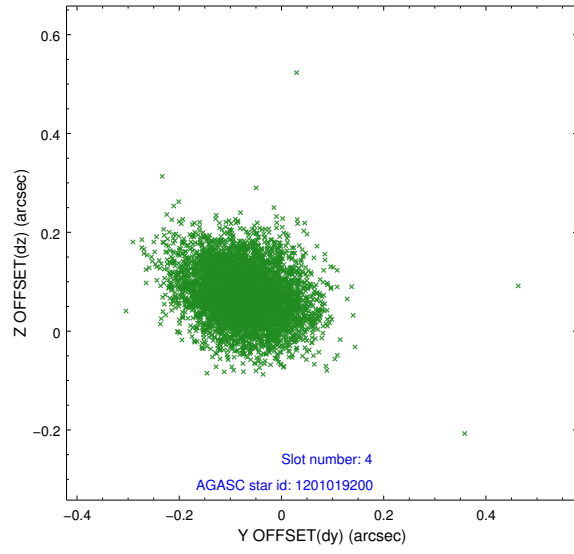
slot	status	id	mag	n_pts	med_dy	med_dz	dr1	dr2	ra	dec	mean_y	mean_z
0	FID	HRC-S-1	6.95	2457	0.131	-0.109	0.008	0.013	0.000000	0.000000	-1155.88	-452.53
1	FID	HRC-S-3	6.98	2457	0.132	-0.087	0.009	0.014	0.000000	0.000000	-1159.02	576.84
2	FID	HRC-S-4	6.93	2457	0.125	-0.100	0.005	0.009	0.000000	0.000000	1241.95	579.71
3	GUIDE	1201020040	8.59	4914	-0.003	-0.046	0.072	0.117	85.379163	-68.879396	-194.25	-1607.30
4	GUIDE	1201019200	9.47	4912	-0.074	0.074	0.089	0.147	84.213591	-68.777384	1351.32	-1813.56
5	GUIDE	1201406992	9.27	4911	0.069	-0.056	0.090	0.150	83.682859	-69.471866	1730.78	749.63
6	GUIDE	1200885760	9.47	4911	-0.093	0.072	0.100	0.163	83.723637	-68.777667	1985.58	-1736.45
7	GUIDE	1201020088	10.59	4910	0.098	-0.046	0.144	0.234	86.319248	-68.997756	-1442.72	-1290.18

2.4 Star Slots

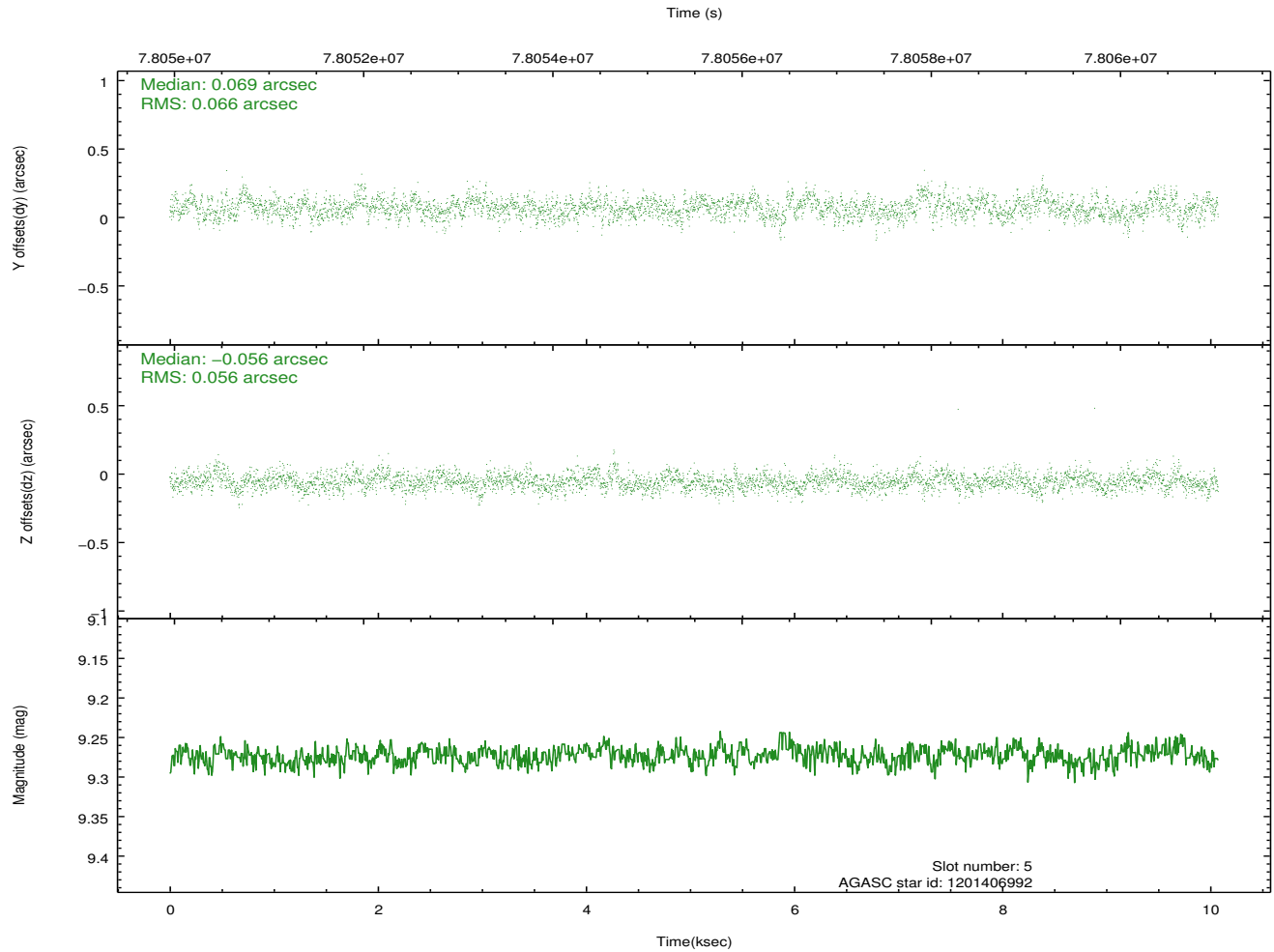
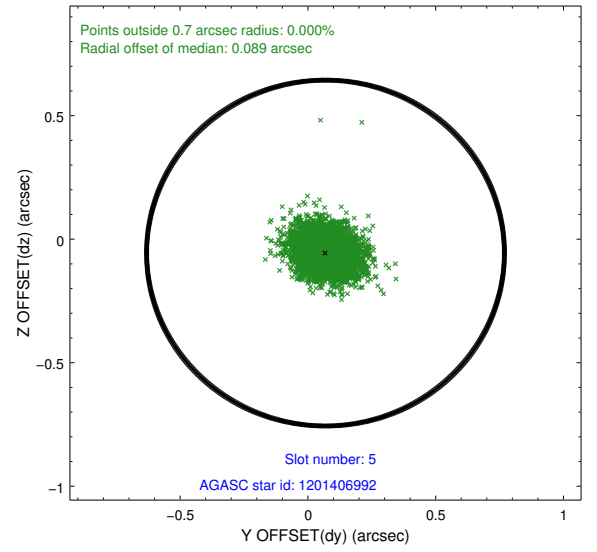
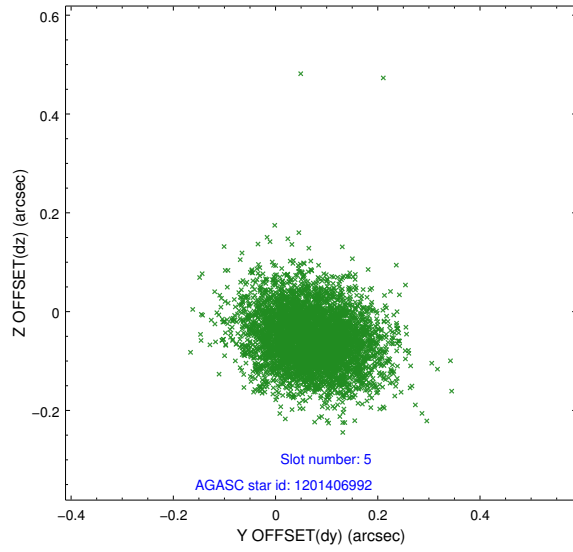
2.4.1 Slot 3



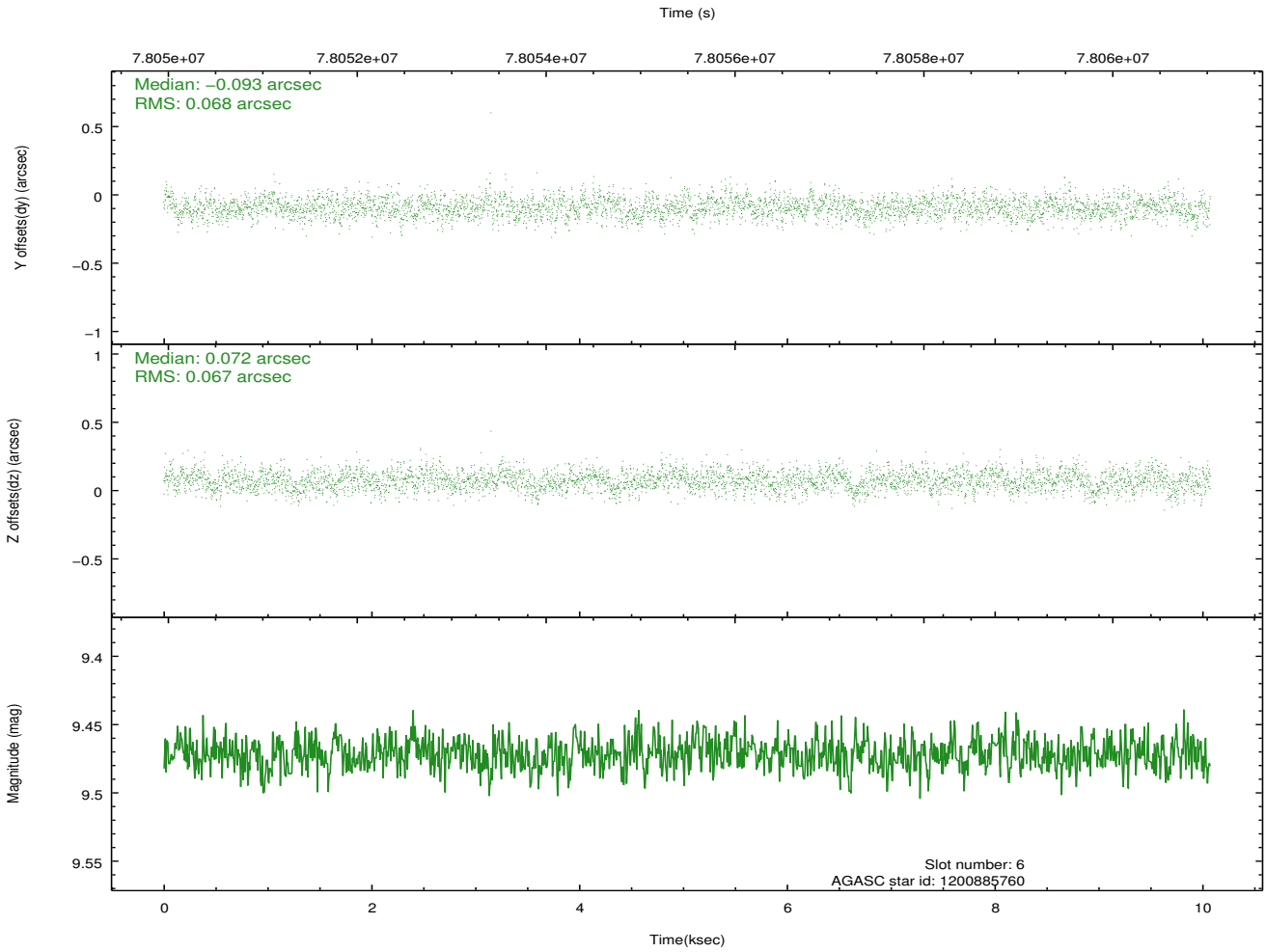
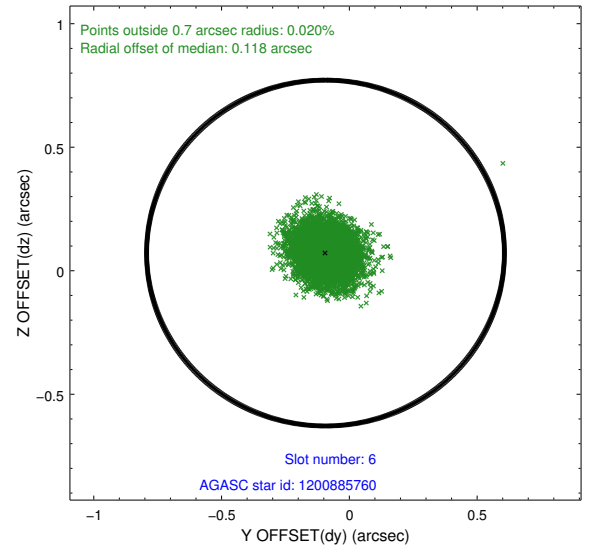
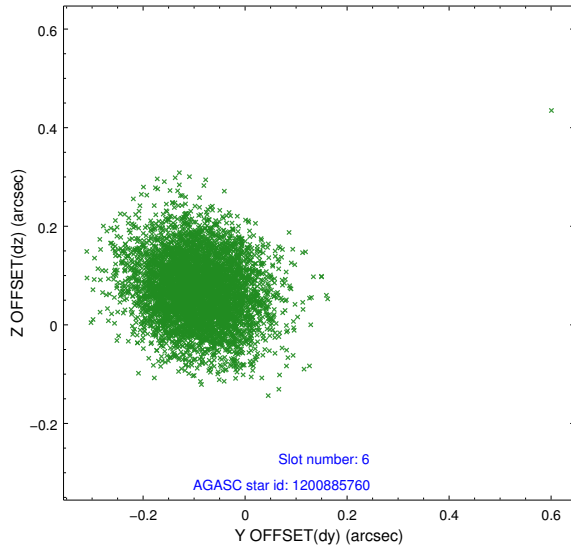
2.4.2 Slot 4



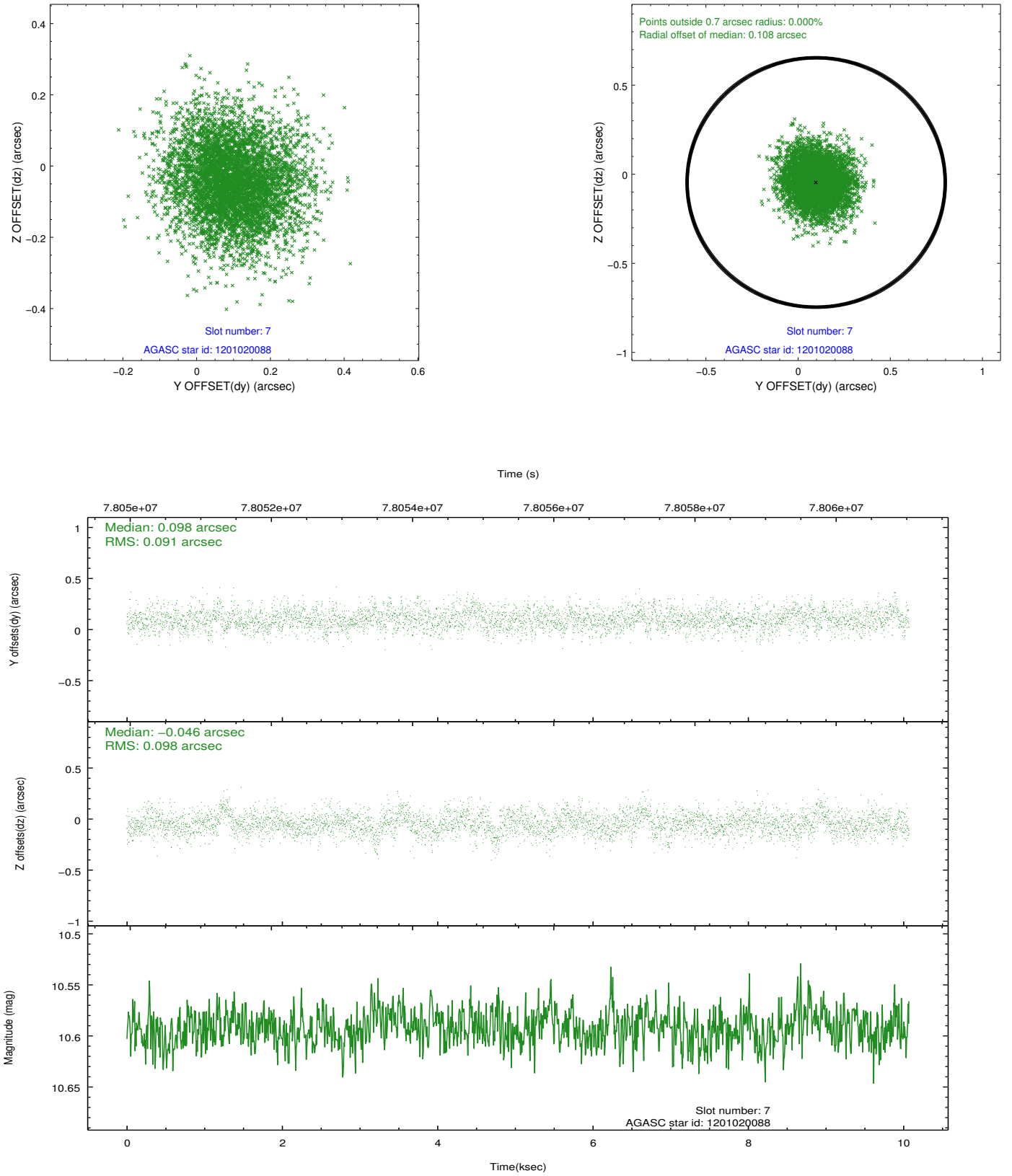
2.4.3 Slot 5



2.4.4 Slot 6

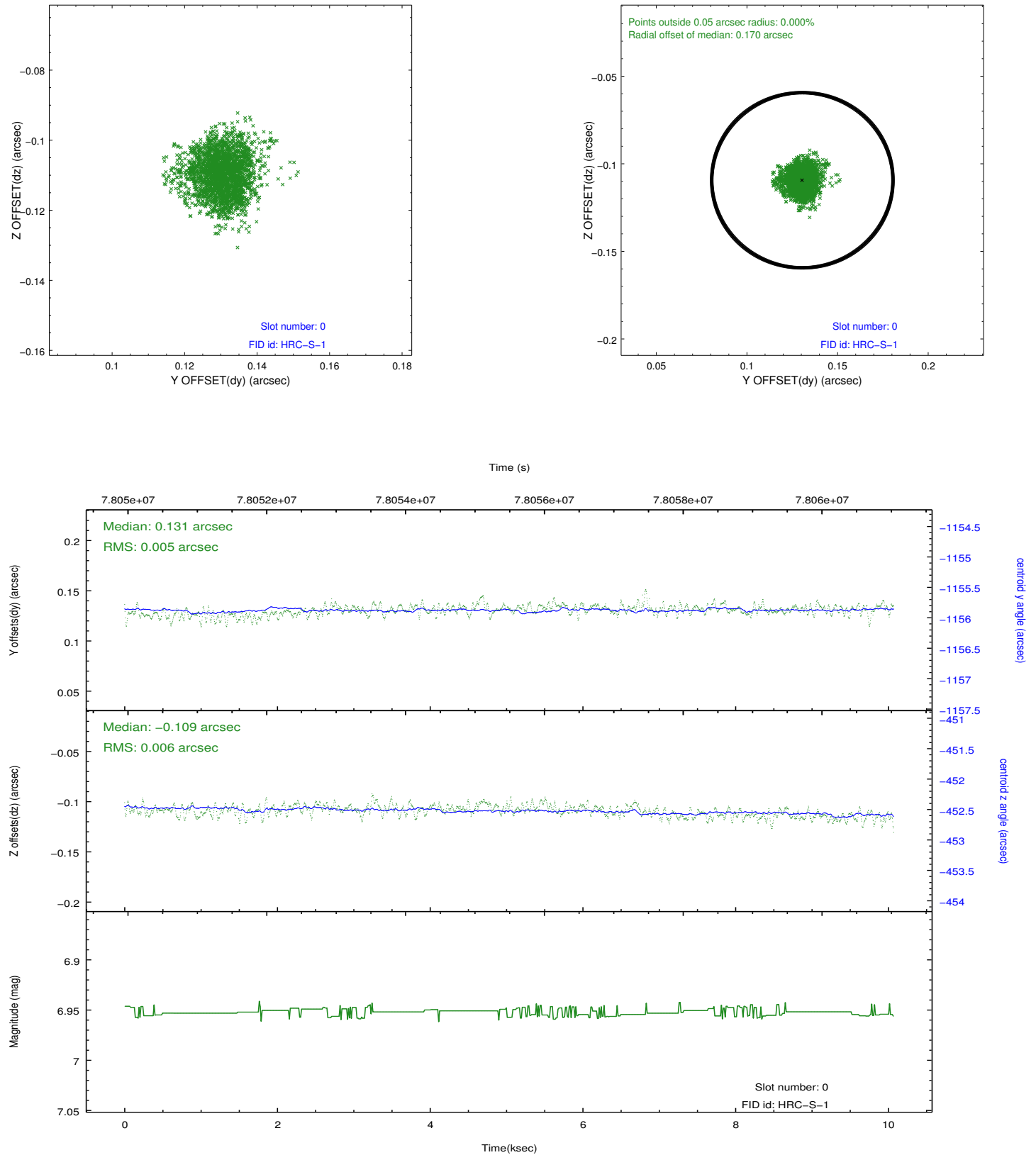


2.4.5 Slot 7

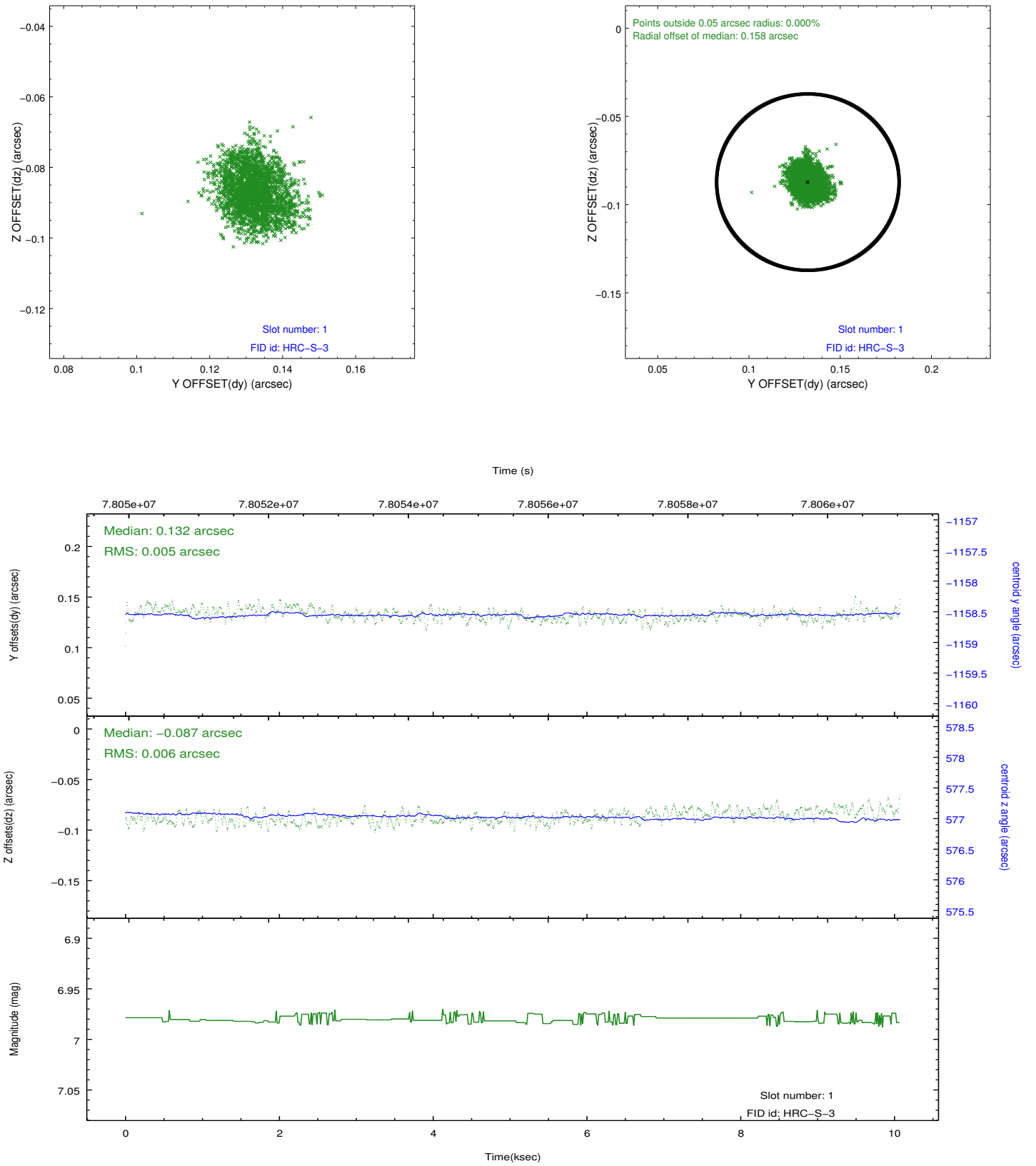


2.5 FID Slots

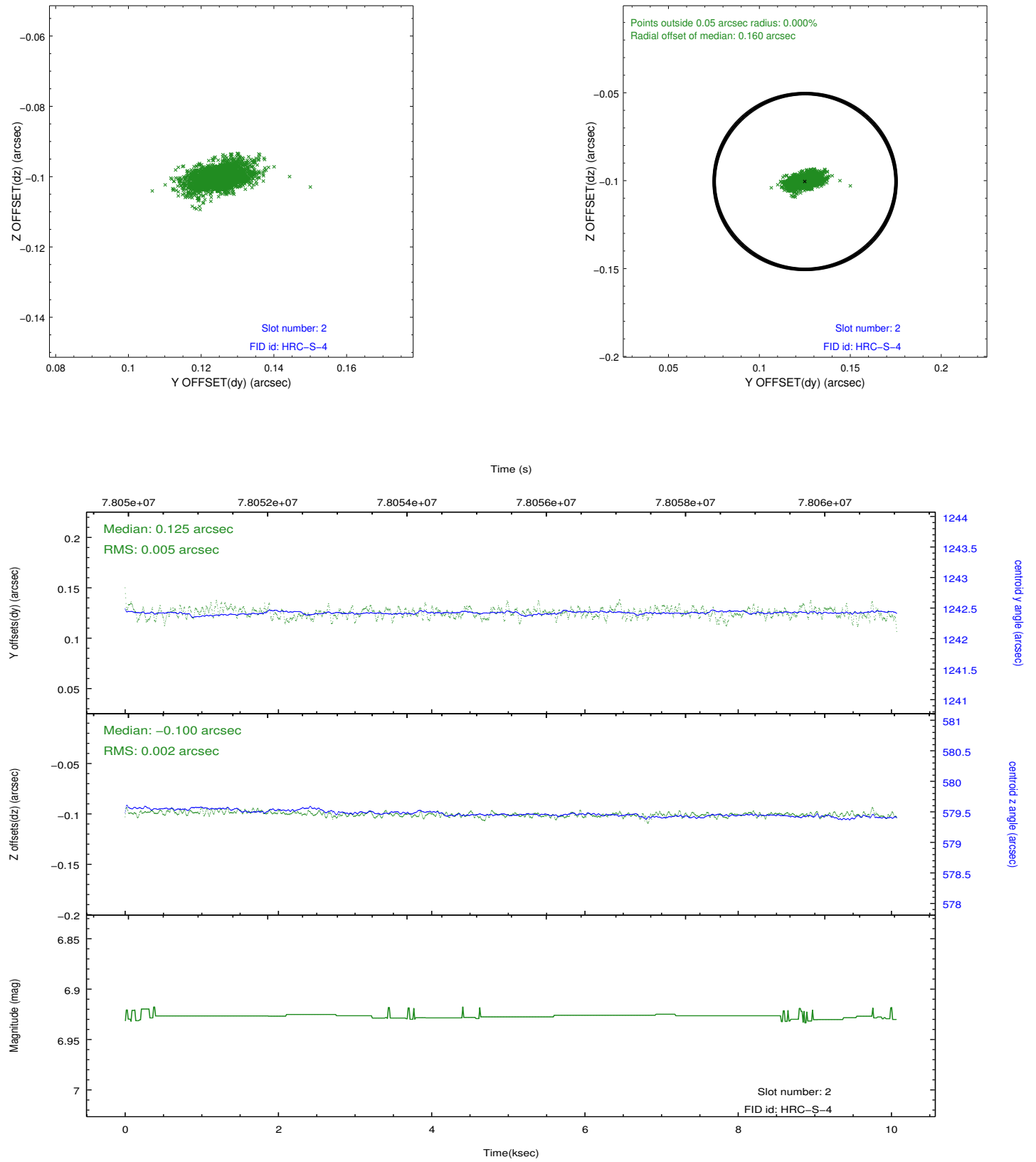
2.5.1 Slot 0



2.5.2 Slot 1



2.5.3 Slot 2



A Summary

A.1 Status

V&V Scientist	Jen Lauer
V&V Date (YYYY-MM-DD)	2012.08.31
V&V Edition	1
V&V Disposition and Status	OK
V&V Charge Time	10.072

A.2 Comments