

V&V Reference Report

L2 ASCDS Version : 8.2.1

Observation 157 - L2 Version 4

Chandra X-Ray Center

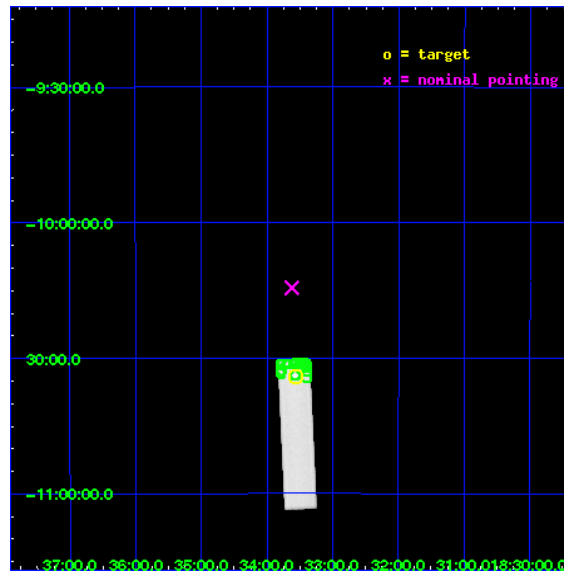
L2 Processing Date : Jan 13 2010

Contents

1	Front	2
2	OBI	3
2.1	OBI	3
2.1.1	Images	3
2.1.2	Parameters	4
2.1.3	Events	4
2.2	Compared Parameters	5
2.3	Aspect	6
2.4	Star Slots	9
2.4.1	Slot 3	9
2.4.2	Slot 4	10
2.4.3	Slot 5	11
2.4.4	Slot 6	12
2.4.5	Slot 7	13
2.5	FID Slots	14
2.5.1	Slot 0	14
2.5.2	Slot 2	15
3	Point Sources	16
A	Summary	17
A.1	Status	17
A.2	Comments	17

1 Front

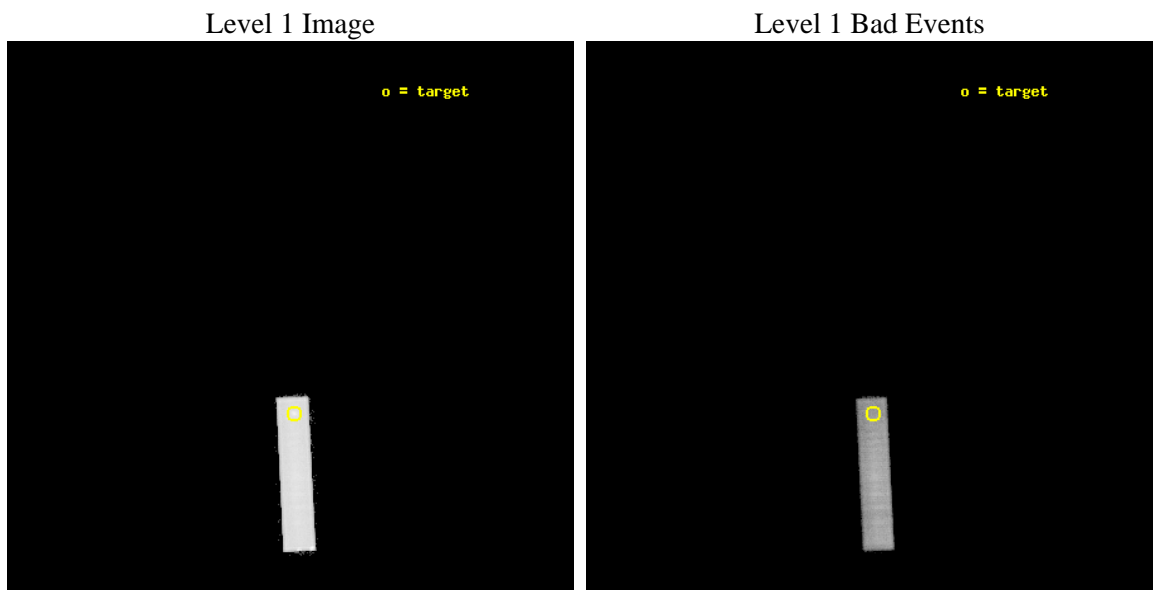
seq_num	590025	Sequence number
obs_id	157	Observation id
title	HRC RESPONSE TO CONTINUUM SOURCE.	Proposal title
observer	Dr. CXC Calibration	Principal investigator
object	G21.5-0.9 [HRC-S, Offsets=20,0,0 -Y MCP]	Source name
ra_targ	278.389583	Observer's specified target RA
dec_targ	-10.568528	Observer's specified target Dec
ra_nom	278.40522362331	Nominal RA
dec_nom	-10.240994861801	Nominal Dec
roll_nom	267.26018973797	Nominal Roll
revision	4	Processing version of data
ontime	9724.4315981492	[s]
livetime	9657.7589977687	Ontime multiplied by DTCOR
l2events	389526	Number of level 2 events



2 OBI

2.1 OBI

2.1.1 Images



2.1.2 Parameters

obi_num	0	Obi number	sched_exp_time	10000.000000	Scheduled observation exposure time
ascdsver	8.2.1	Processing system revision	ontime	9724.4315991476	[s]
caldbver	4.1.5	 	ll events	603024	Number of level 1 events
date	2010-01-13T04:52:43	Date and time of file creation			
revision	4	Processing version of data			

2.1.3 Events

Level 1 Events

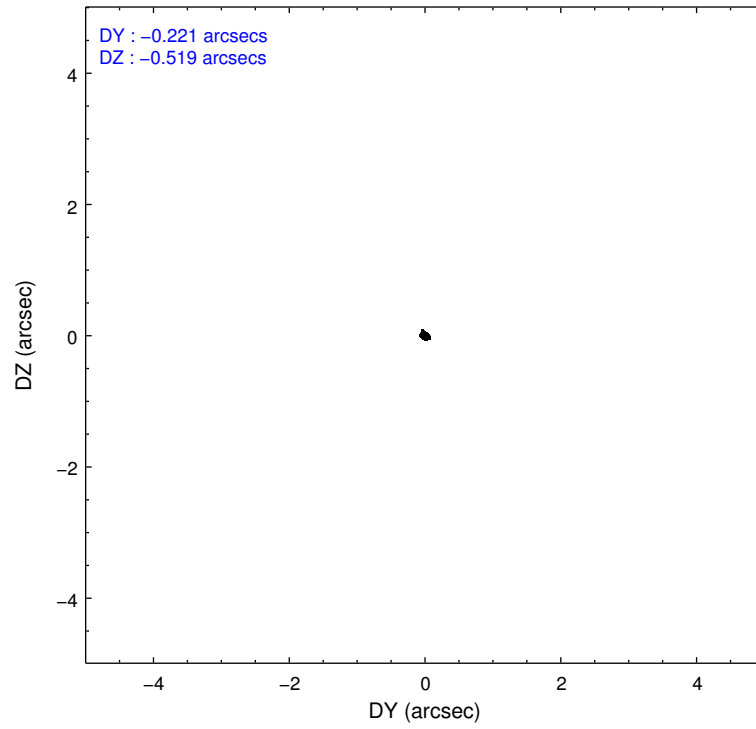
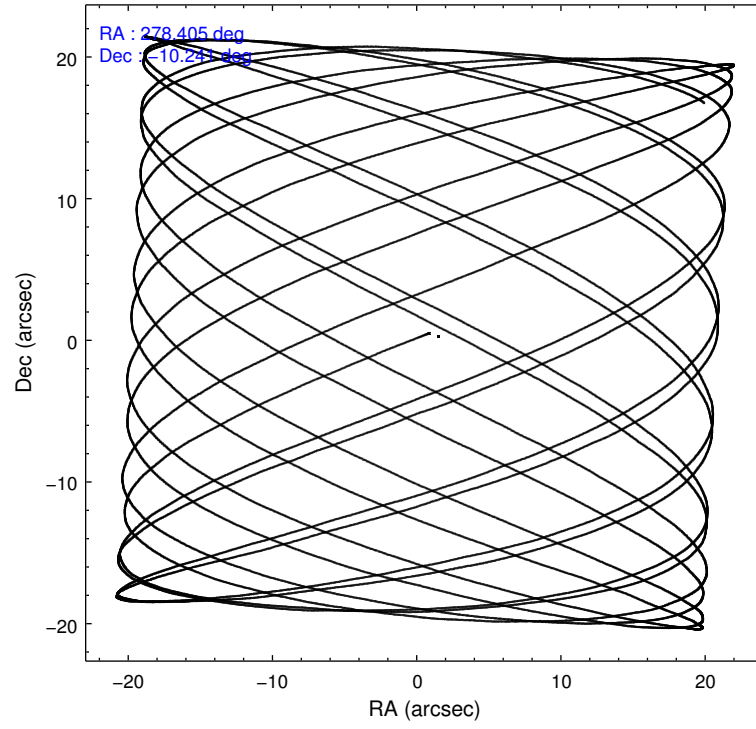
	segment 1	segment 2	segment 3
level 1 events	0	220	602804
rejected events	0	147	169715
rejected %	0%	66%	28%

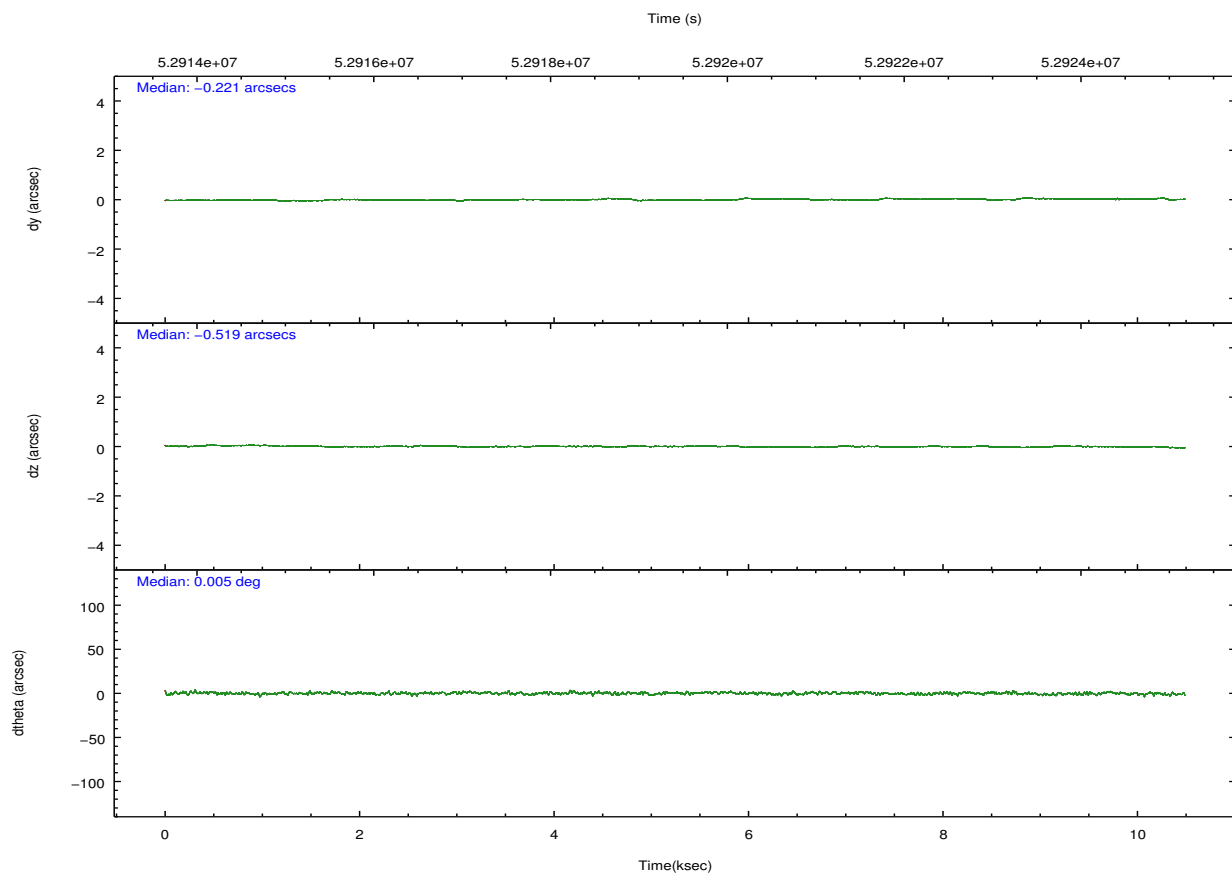
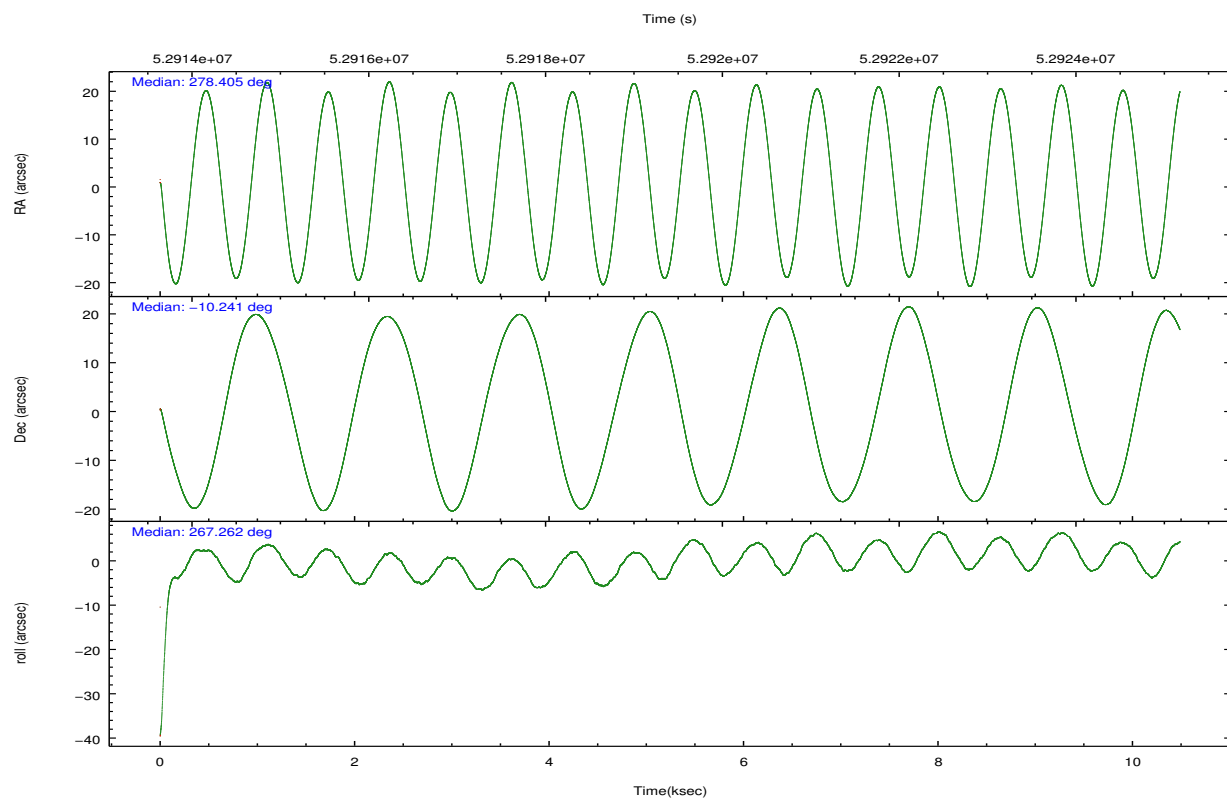
2.2 Compared Parameters

Parameter	Planned	Actual
Instrument	HRC	HRC
Detector	HRC-S	HRC-S
Grating	NONE	NONE
Data mode	OBSERVING	OBSERVING
Observation mode	POINTING	POINTING
Pointing RA	278.391245	278.4052236233058
Pointing Dec	-10.215524	-10.24099486180132
Pointing Roll	267.190410	267.2601897379722
SIM focus pos (mm)	-1.429586	-1.370509375638239
SIM defocus (mm)	0.1037507710433287	0.1628272637660579
SIM translation stage pos (mm)	250.455976	250.466033080201
SIM translation stage offset (mm)	0	-0.01005468664627074
Observation start time	52914652.184000	52913985.651072
Observation start date	1999-09-05T10:29:48	1999-09-05T10:19:45
Observation end time	52924652.184000	52924786.07646
Observation end date	1999-09-05T13:16:28	1999-09-05T13:19:46

Parameter	Planned	Actual
Obspar format version number	6	6
Obspar file type	PREDICTED	ACTUAL
Obspar update status	NONE	UPDATED

2.3 Aspect



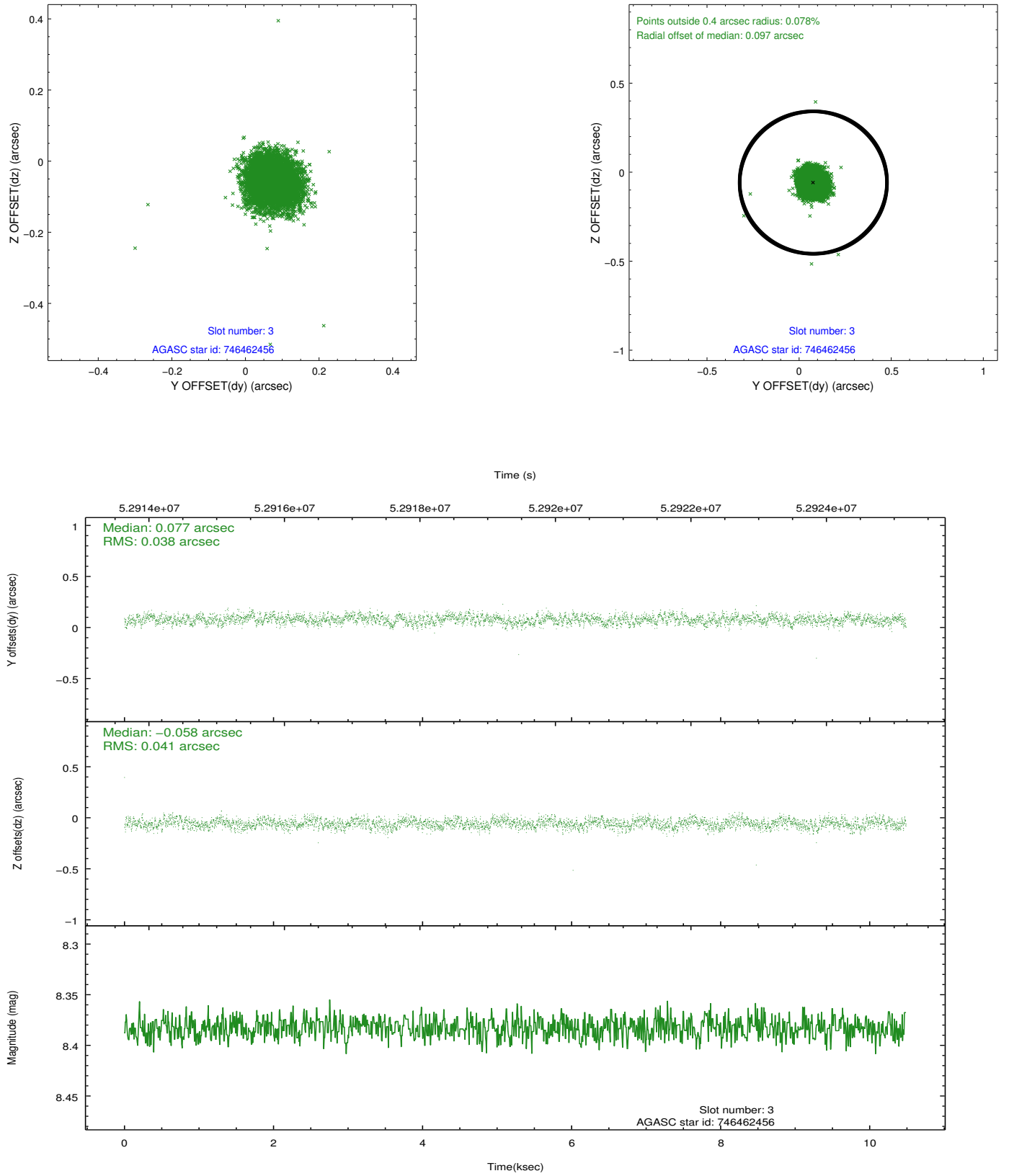


Slot Statistics

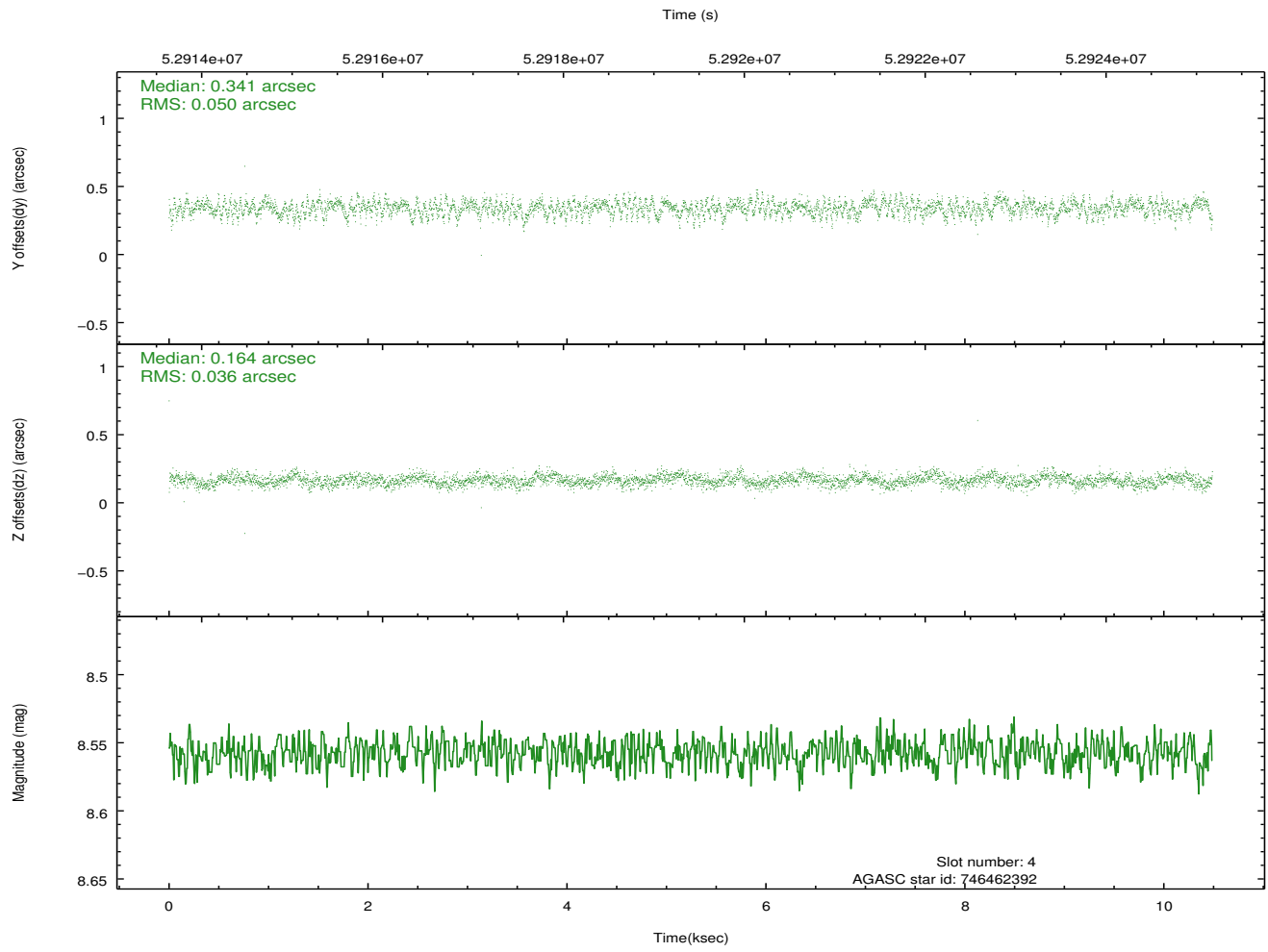
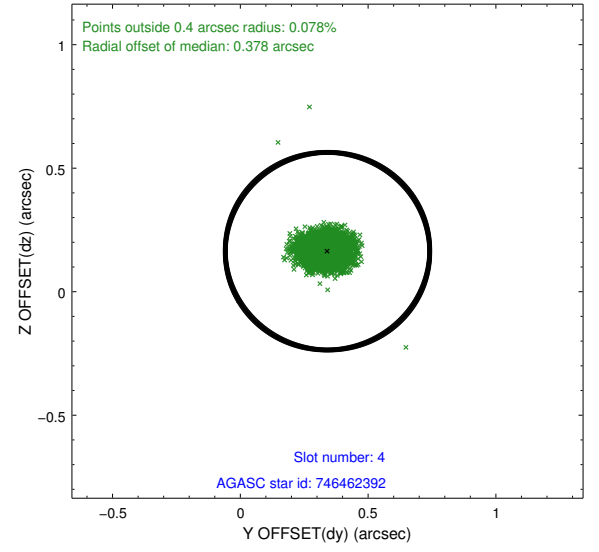
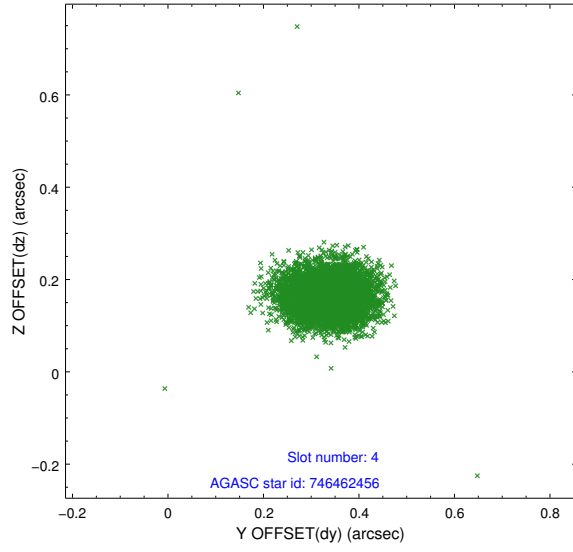
slot	status	id	mag	n_pts	med_dy	med_dz	dr1	dr2	ra	dec	mean_y	mean_z
0	FID	HRC-S-1	6.99	5117	0.140	-0.097	0.004	0.008	0.000000	0.000000	-1153.83	-447.61
1	UNUSED		0.00	0	0.000	0.000	0.000	0.000	0.000000	0.000000	0.00	0.00
2	FID	HRC-S-4	6.98	5117	0.122	-0.105	0.004	0.008	0.000000	0.000000	1244.34	584.05
3	GUIDE	746462456	8.38	5117	0.077	-0.058	0.058	0.092	278.652171	-10.530173	1086.58	978.59
4	GUIDE	746462392	8.56	5116	0.341	0.164	0.064	0.105	279.038421	-10.890715	2318.64	2405.51
5	GUIDE	746460272	8.92	5116	-0.103	0.019	0.071	0.111	278.847488	-10.152127	-305.65	1604.91
6	GUIDE	746458288	9.99	5035	-0.165	-0.072	0.123	0.199	278.591405	-9.671581	-1990.87	614.77
7	GUIDE	746460328	9.82	5093	-0.155	-0.054	0.111	0.179	278.603974	-9.898096	-1178.62	698.34

2.4 Star Slots

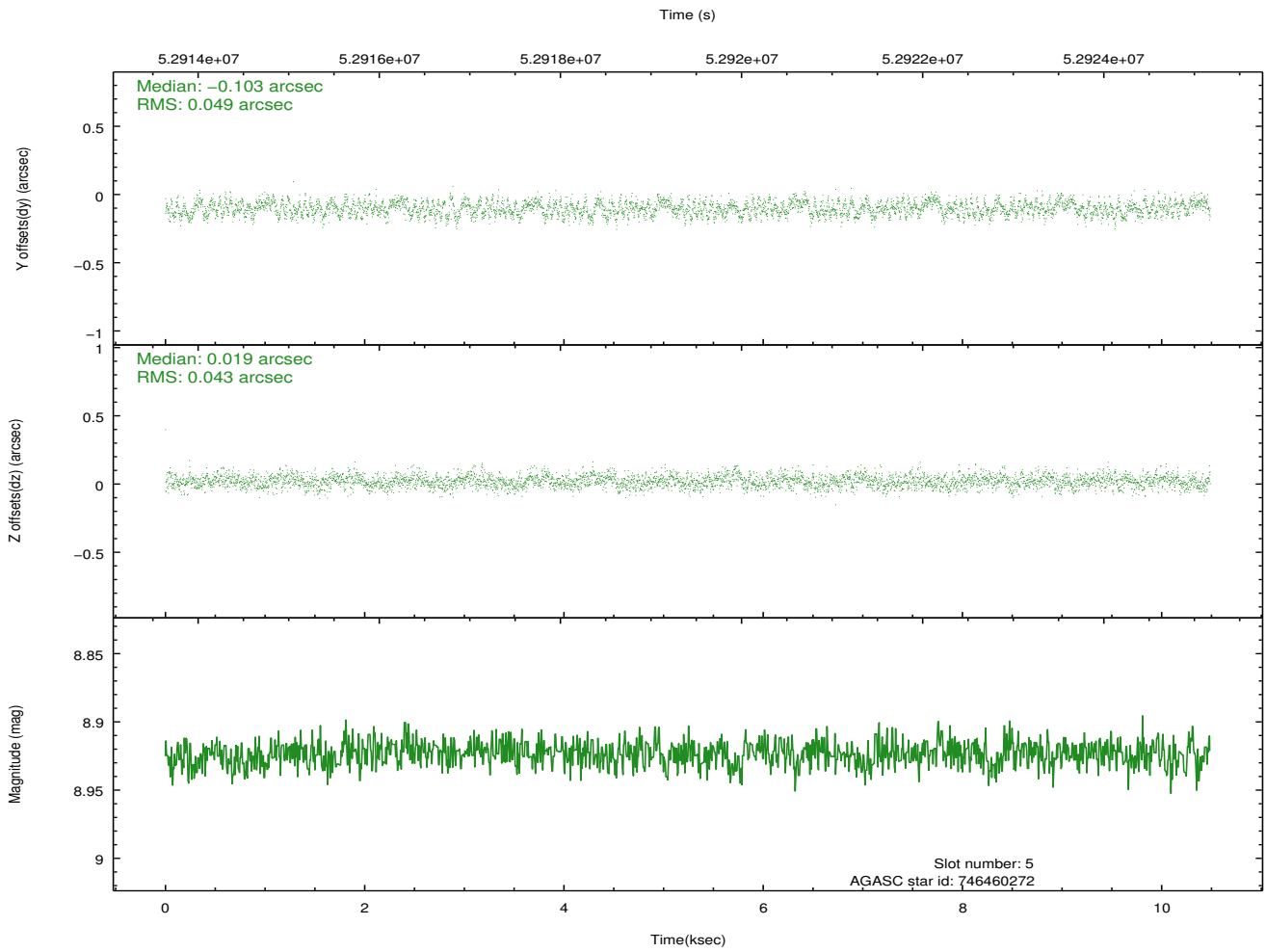
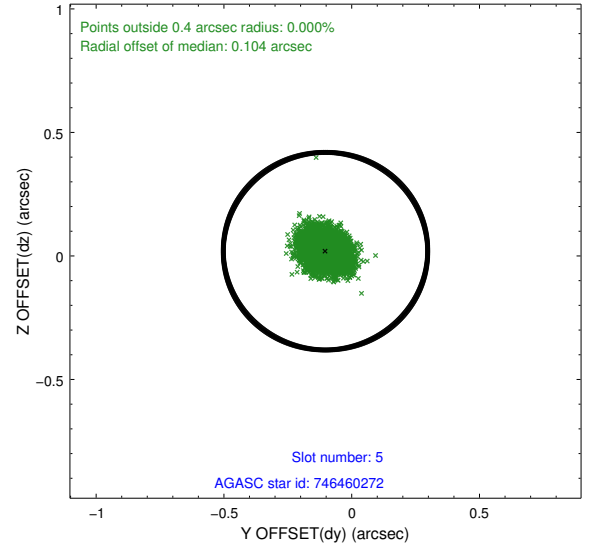
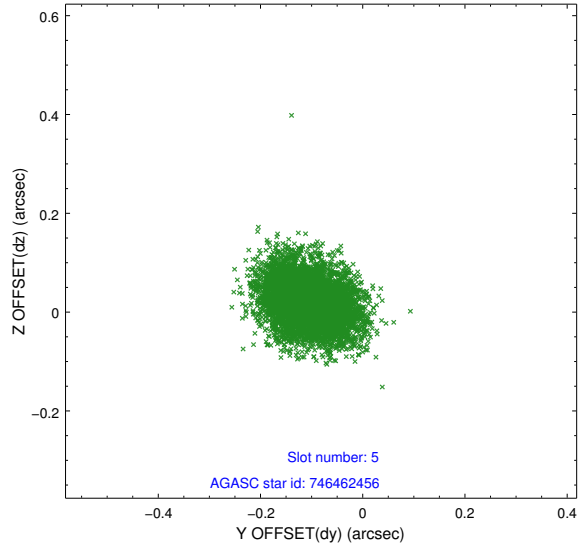
2.4.1 Slot 3



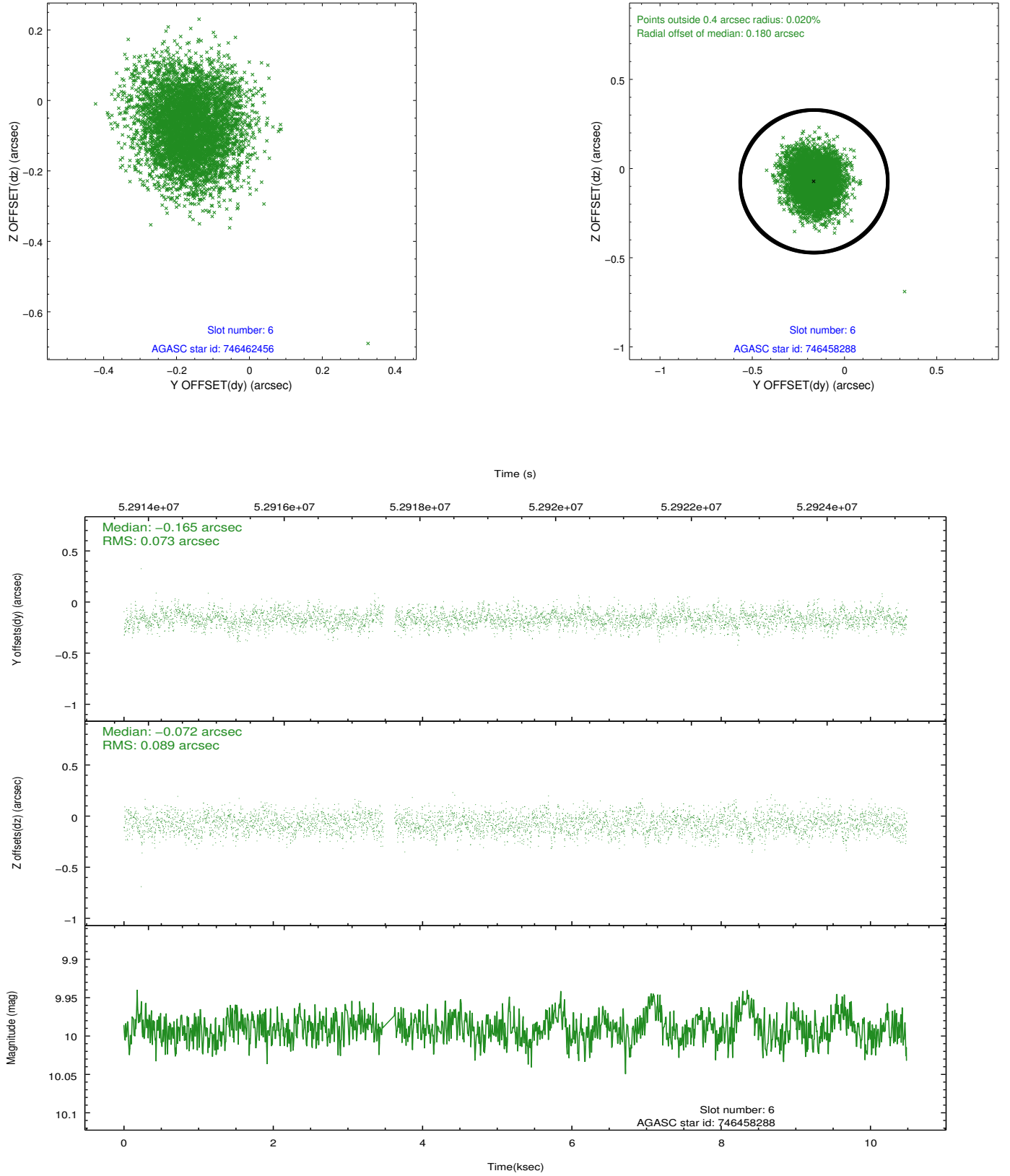
2.4.2 Slot 4



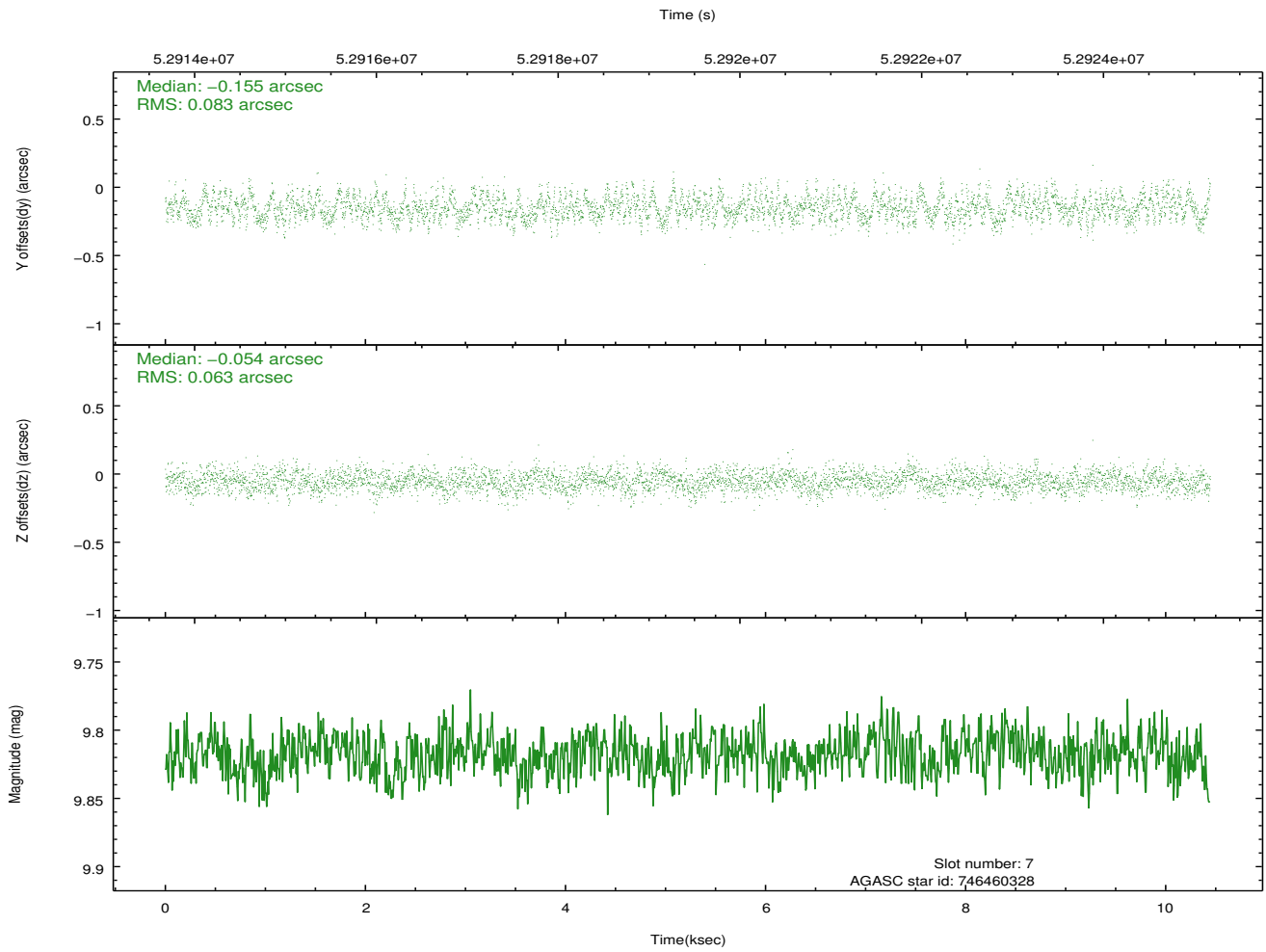
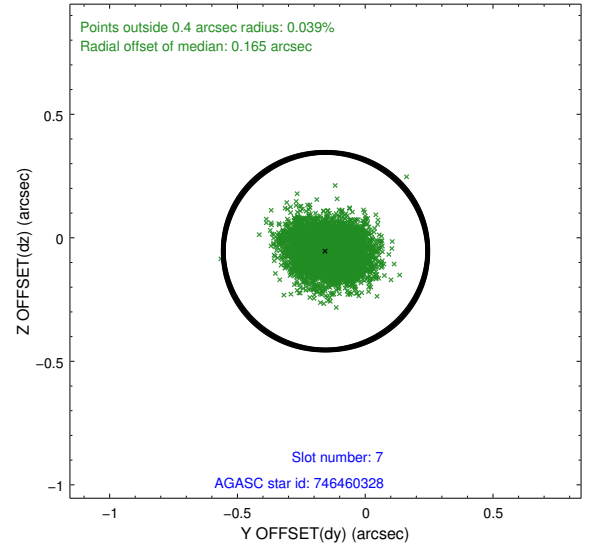
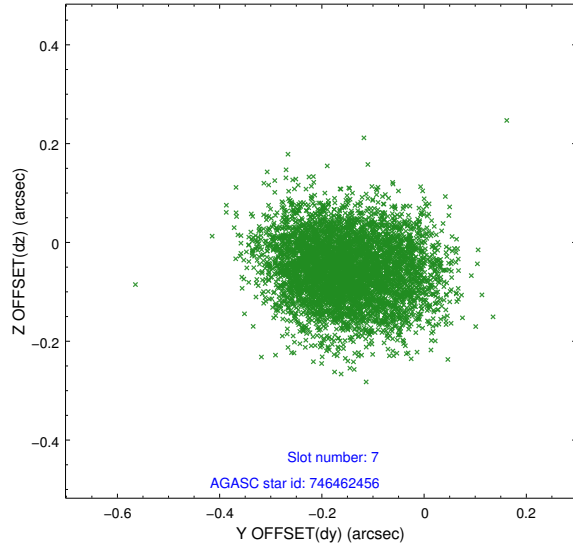
2.4.3 Slot 5



2.4.4 Slot 6

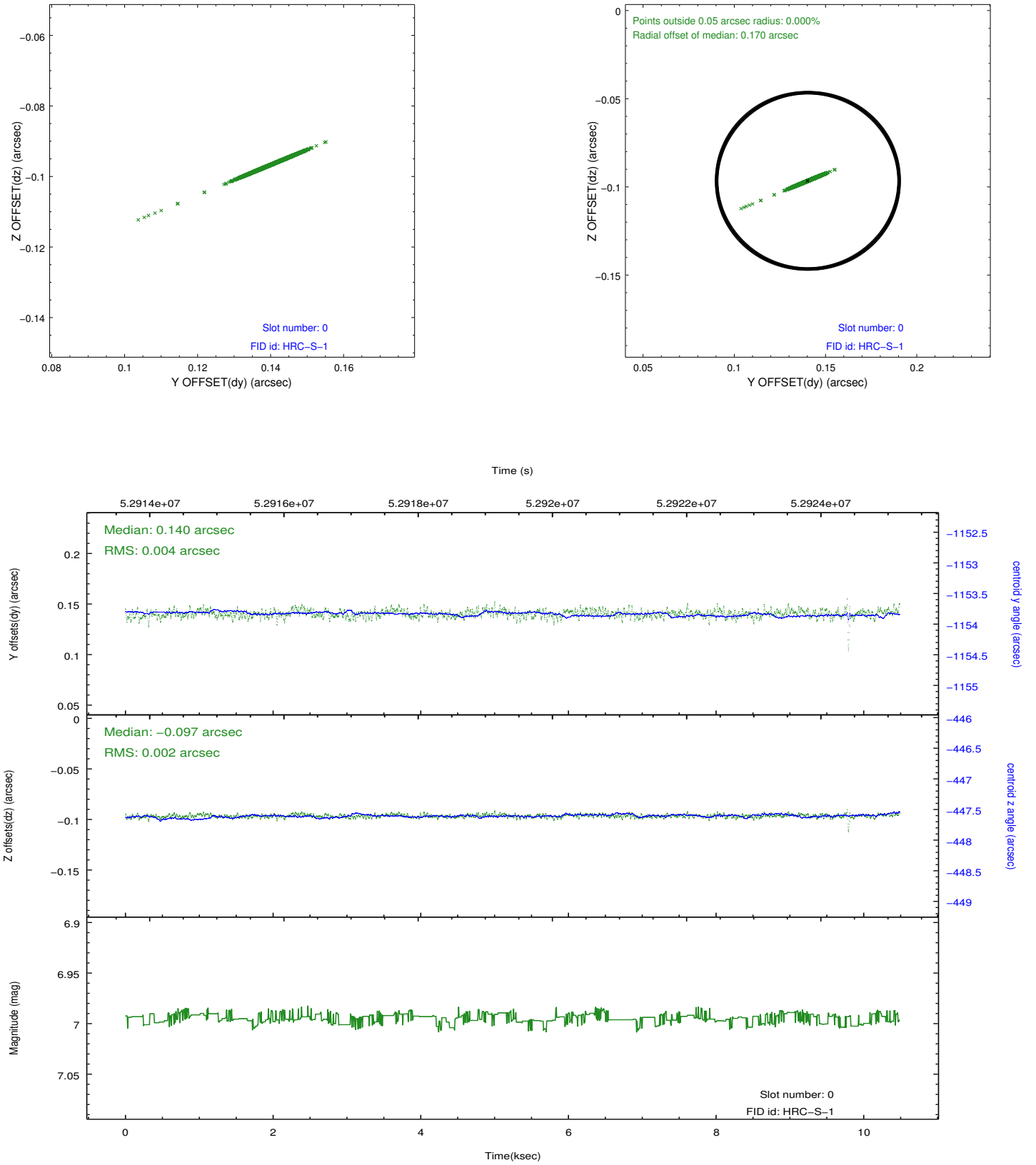


2.4.5 Slot 7

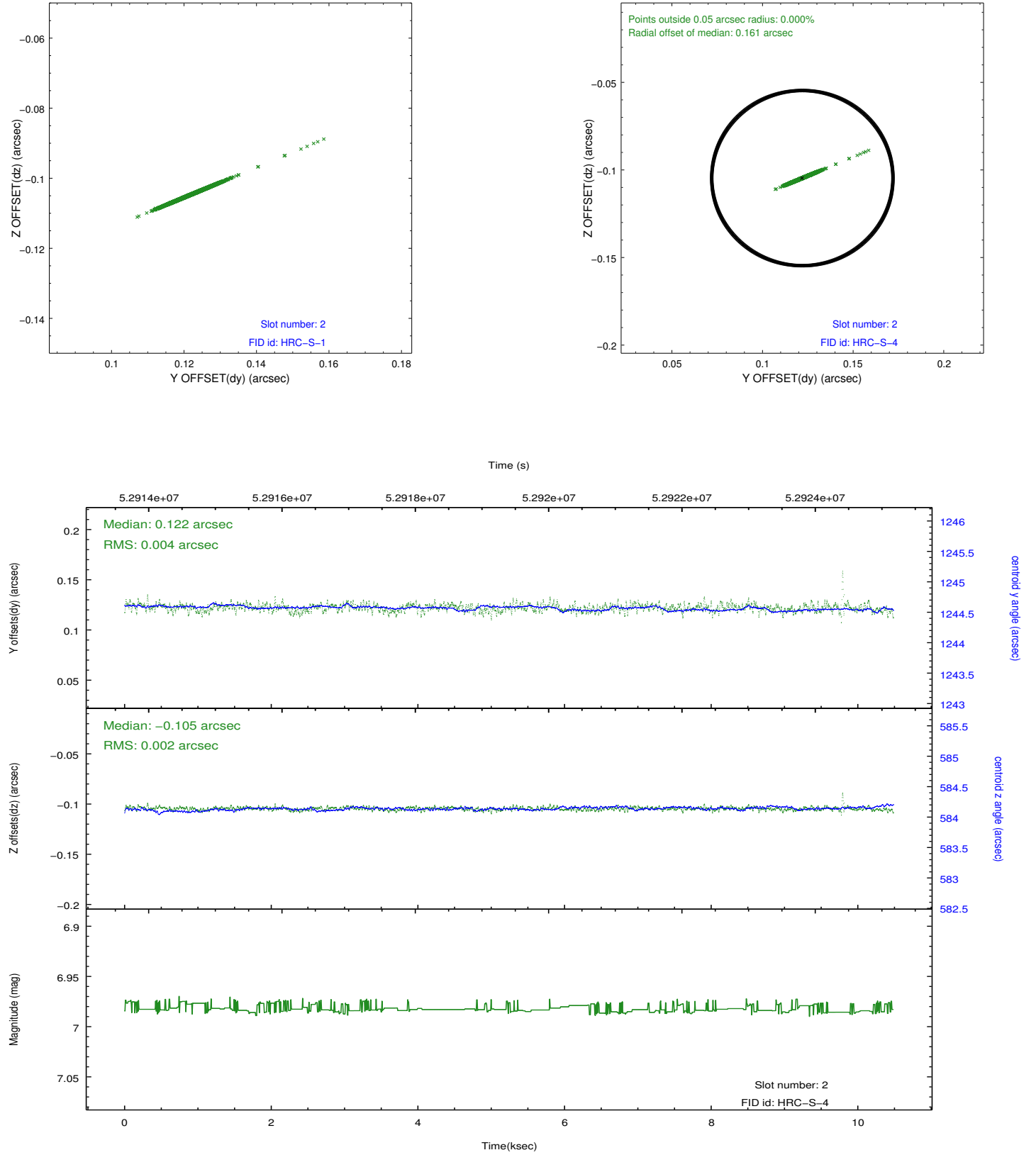


2.5 FID Slots

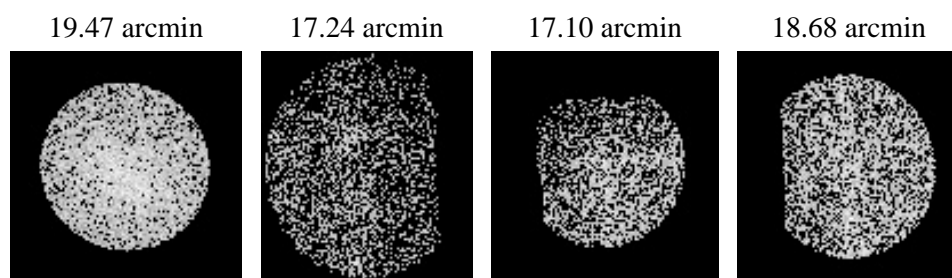
2.5.1 Slot 0



2.5.2 Slot 2



3 Point Sources



A Summary

A.1 Status

V&V Scientist	Joy Nichols
V&V Date (YYYY-MM-DD)	2010.01.29
V&V Edition	1
V&V Disposition and Status	OK
V&V Charge Time	9.72

A.2 Comments

HRC-S response to continuum source.===

The fid light in slot 1 was removed from the aspect solution due to poor data quality. The aspect solution is not expected to be degraded by removing one fid light from the solution.