

V&V Reference Report

L2 ASCDS Version : 8.2.1

Observation 151 - L2 Version 4

Chandra X-Ray Center

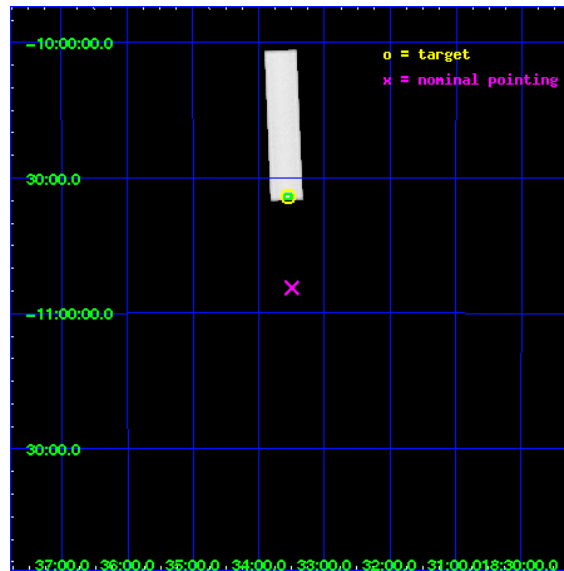
L2 Processing Date : Jan 13 2010

Contents

1	Front	2
2	OBI	3
2.1	OBI	3
2.1.1	Images	3
2.1.2	Parameters	4
2.1.3	Events	4
2.2	Compared Parameters	5
2.3	Aspect	6
2.4	Star Slots	9
2.4.1	Slot 3	9
2.4.2	Slot 4	10
2.4.3	Slot 5	11
2.4.4	Slot 6	12
2.5	FID Slots	13
2.5.1	Slot 0	13
2.5.2	Slot 1	14
2.5.3	Slot 2	15
3	Point Sources	16
A	Summary	17
A.1	Status	17
A.2	Comments	17

1 Front

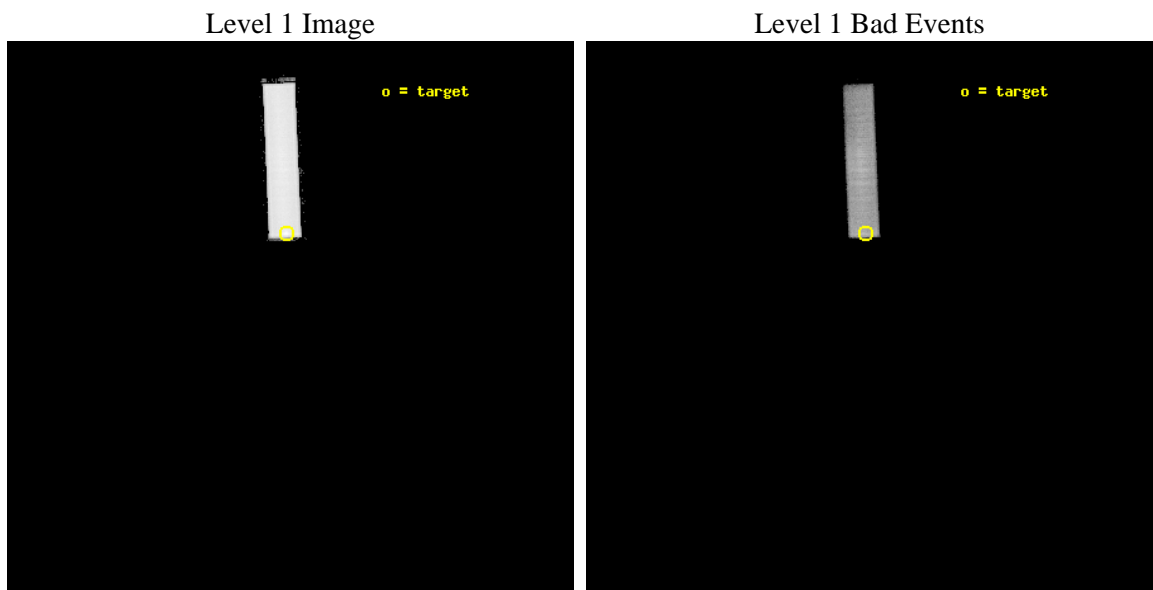
seq_num	590019	Sequence number
obs_id	151	Observation id
title	HRC RESPONSE TO CONTINUUM SOURCE.	Proposal title
observer	Dr. CXC Calibration	Principal investigator
object	G21.5-0.9 [HRC-S, Offsets=-20,0,0 +Y MCP]	Source name
ra_targ	278.389583	Observer's specified target RA
dec_targ	-10.568528	Observer's specified target Dec
ra_nom	278.3736161931	Nominal RA
dec_nom	-10.906970108274	Nominal Dec
roll_nom	267.53087939668	Nominal Roll
revision	4	Processing version of data
ontime	9723.4065991119	[s]
livetime	9655.7758677231	Ontime multiplied by DTCOR
l2events	456091	Number of level 2 events



2 OBI

2.1 OBI

2.1.1 Images



2.1.2 Parameters

obi_num	0	Obi number	sched_exp_time	10000.000000	Scheduled observation exposure time
ascdsver	8.2.1	Processing system revision	ontime	9723.4065991119	[s]
caldbver	4.1.5	 	ll events	638326	Number of level 1 events
date	2010-01-13T04:17:29	Date and time of file creation			
revision	3	Processing version of data			

2.1.3 Events

Level 1 Events

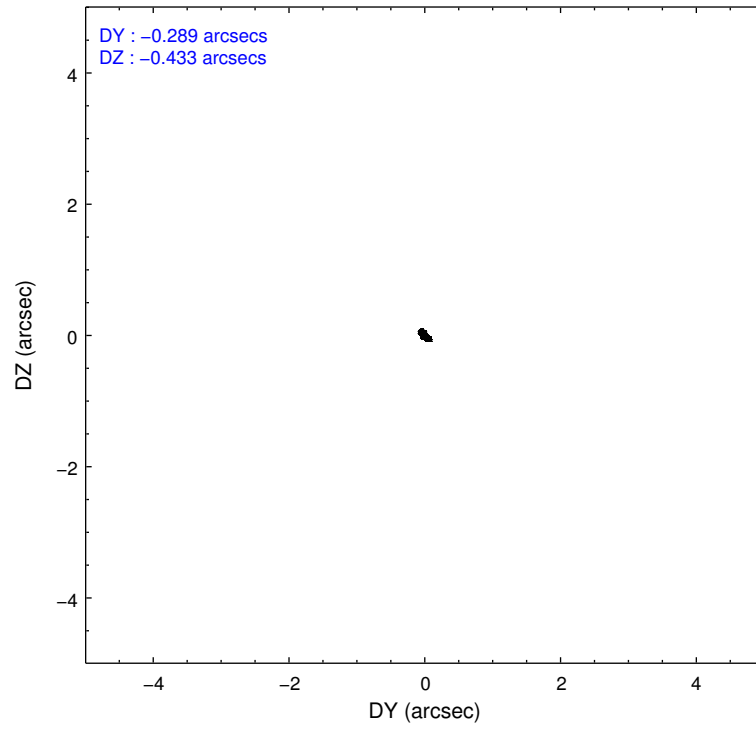
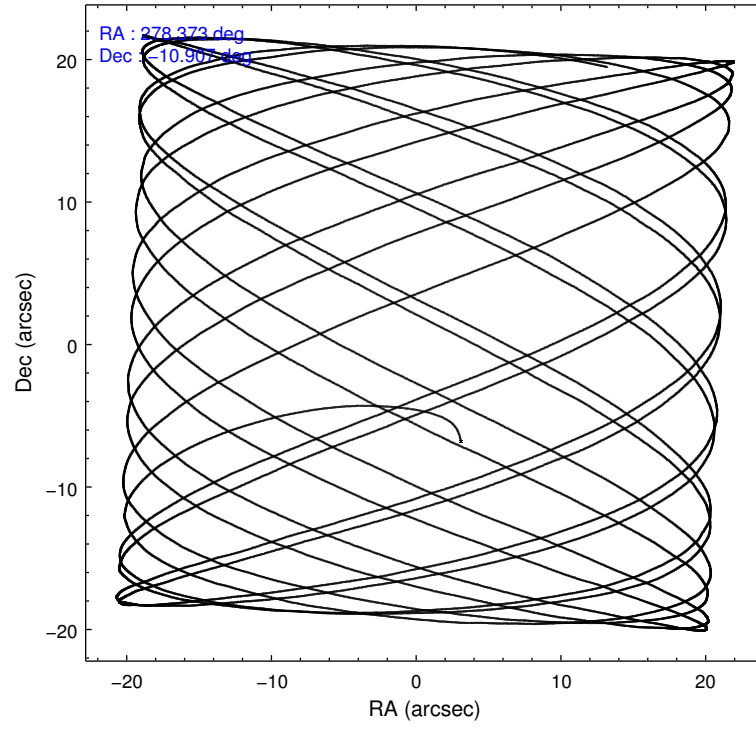
	segment 1	segment 2	segment 3
level 1 events	638054	272	0
rejected events	138781	46	0
rejected %	21%	16%	0%

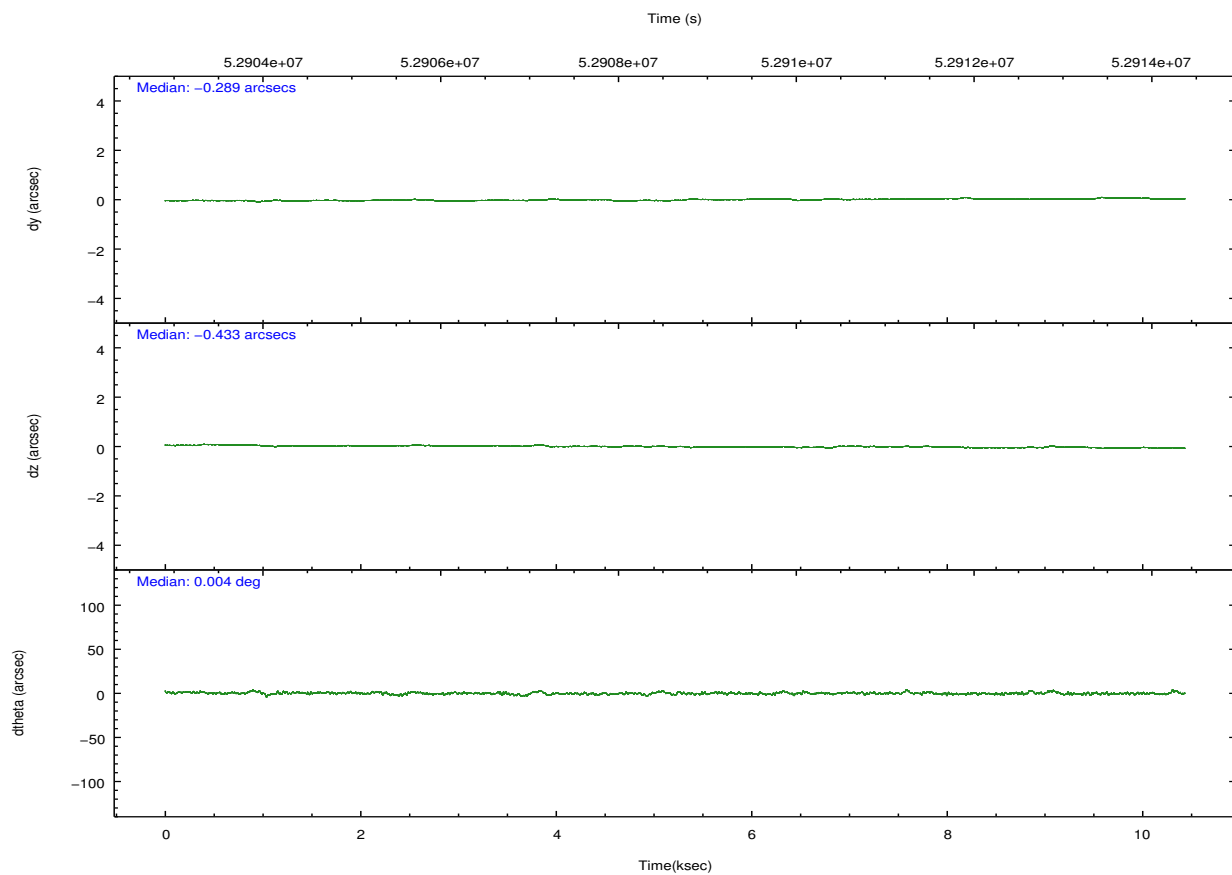
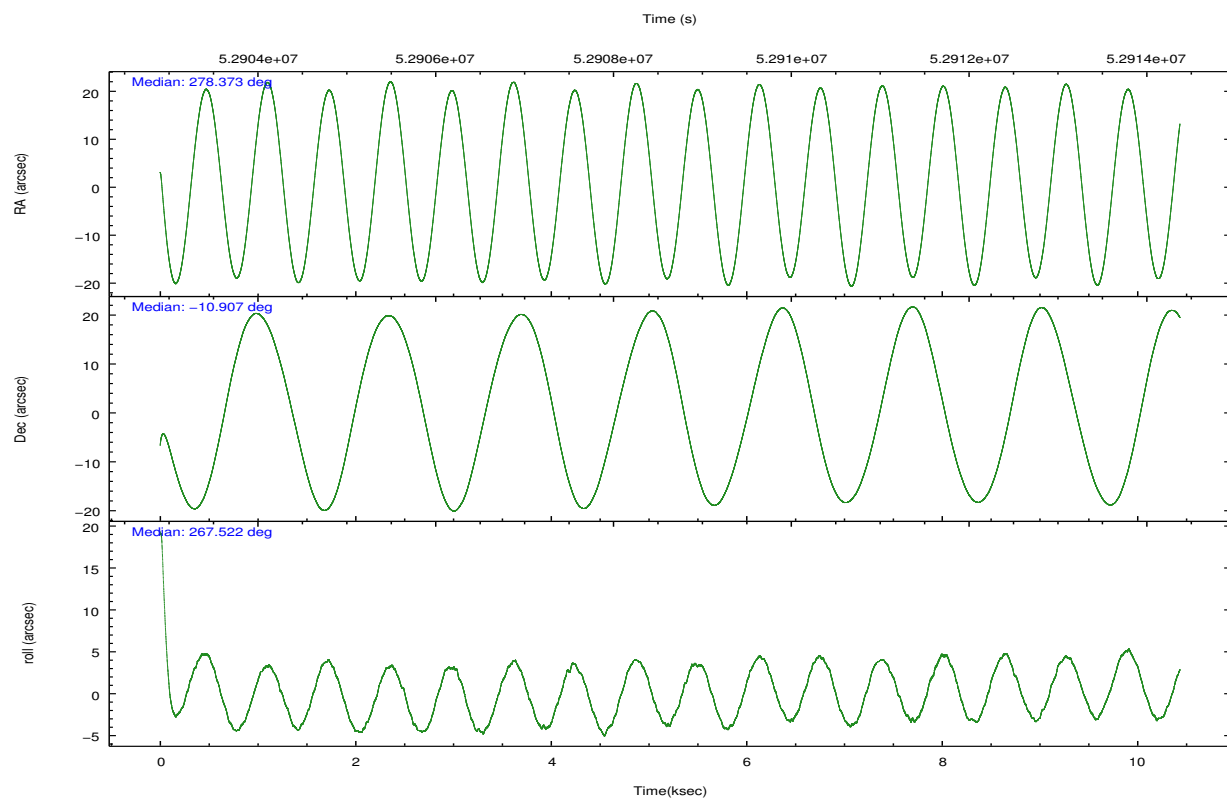
2.2 Compared Parameters

Parameter	Planned	Actual
Instrument	HRC	HRC
Detector	HRC-S	HRC-S
Grating	NONE	NONE
Data mode	OBSERVING	OBSERVING
Observation mode	POINTING	POINTING
Pointing RA	278.359507	278.3736161930995
Pointing Dec	-10.881529	-10.90697010827397
Pointing Roll	267.460856	267.5308793966832
SIM focus pos (mm)	-1.429586	-1.370509375638239
SIM defocus (mm)	0.1037507710433287	0.1628272637660579
SIM translation stage pos (mm)	250.455976	250.466033080201
SIM translation stage offset (mm)	0	-0.01005468664627074
Observation start time	52903852.184000	52901752.788133
Observation start date	1999-09-05T07:29:48	1999-09-05T06:55:52
Observation end time	52913852.184000	52913985.651072
Observation end date	1999-09-05T10:16:28	1999-09-05T10:19:45

Parameter	Planned	Actual
Obspar format version number	6	6
Obspar file type	PREDICTED	ACTUAL
Obspar update status	NONE	UPDATED

2.3 Aspect



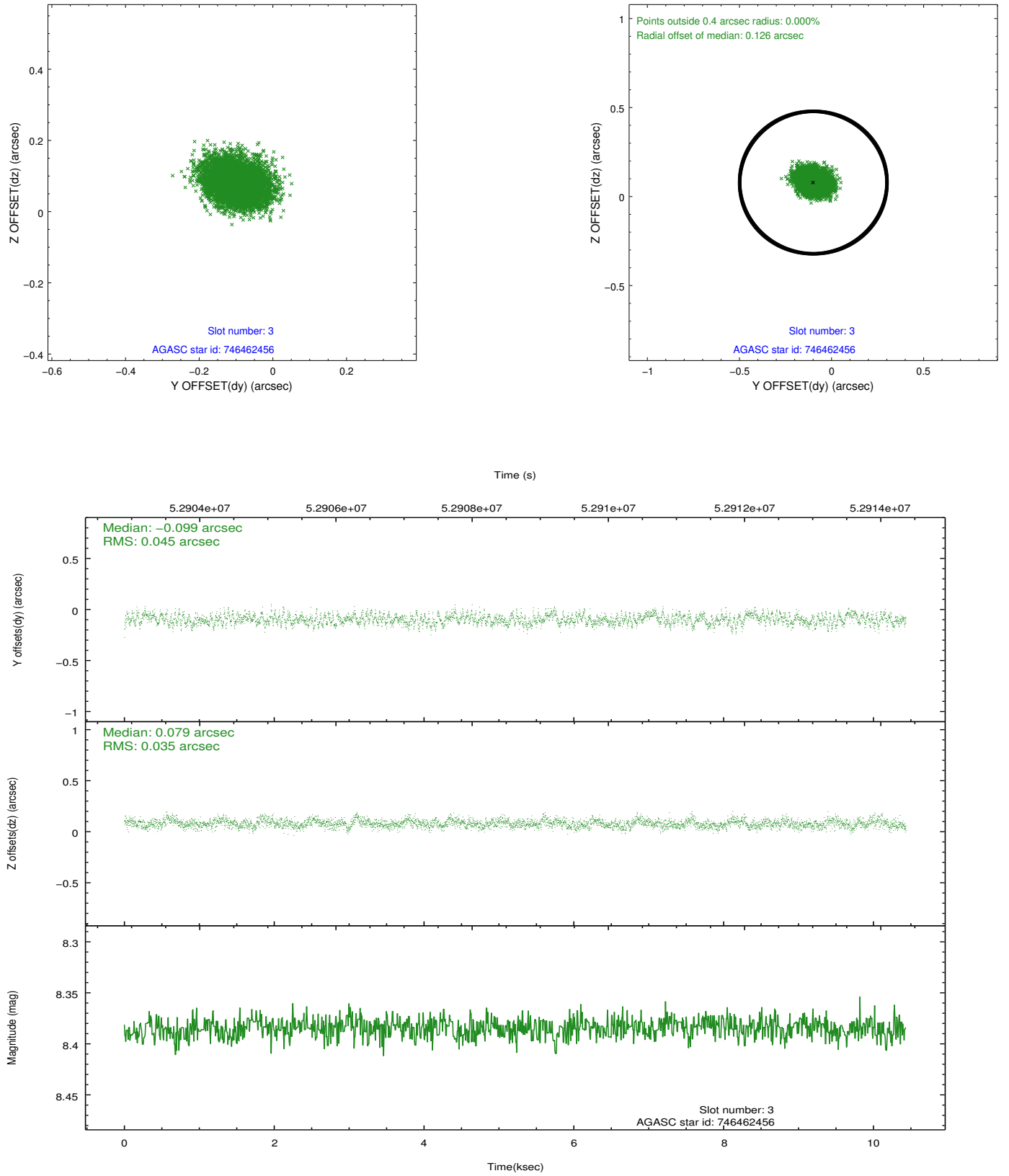


Slot Statistics

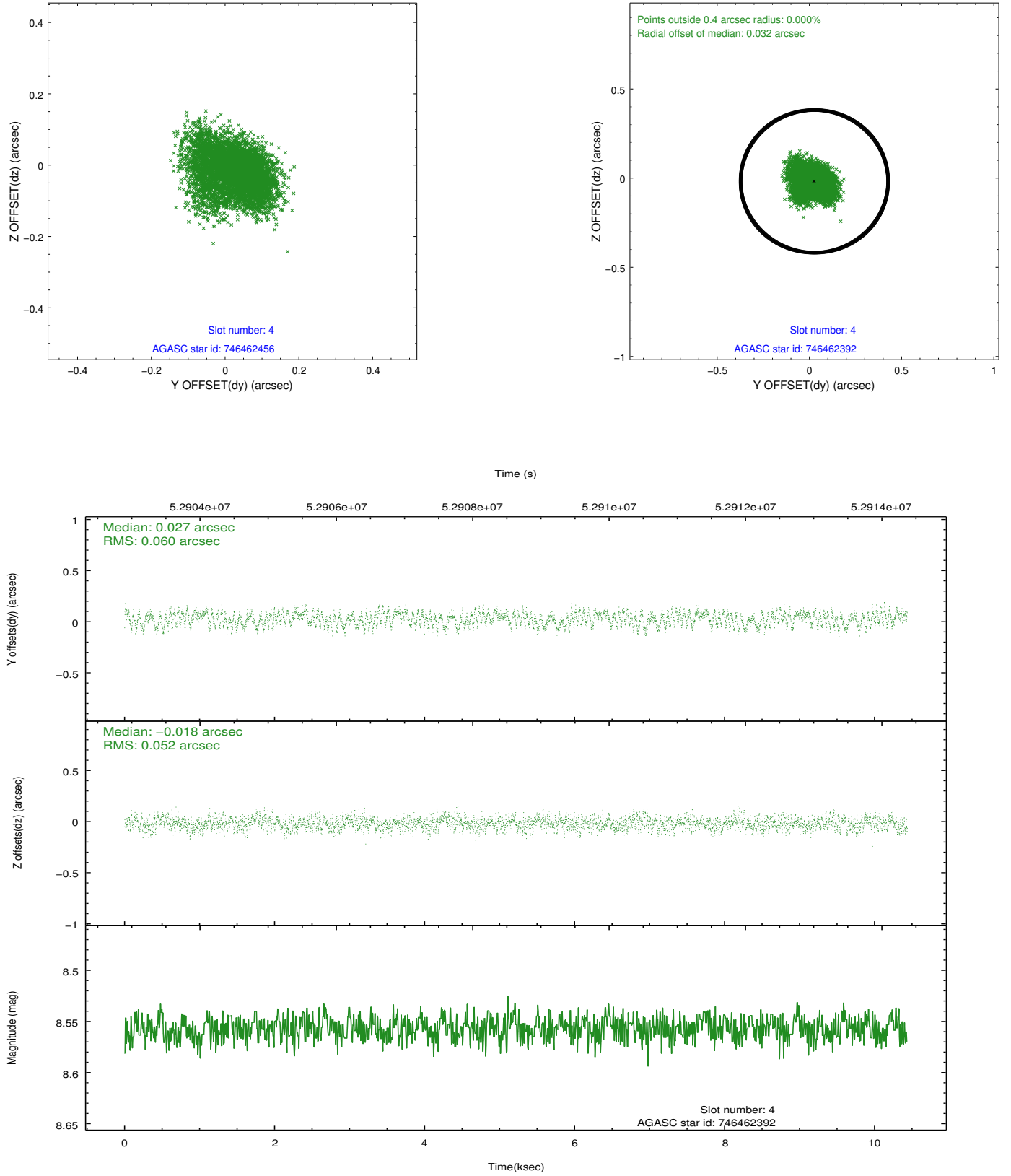
slot	status	id	mag	n_pts	med_dy	med_dz	dr1	dr2	ra	dec	mean_y	mean_z
0	FID	HRC-S-1	6.99	5090	0.155	-0.064	0.007	0.012	0.000000	0.000000	-1153.74	-447.68
1	FID	HRC-S-3	7.00	5091	0.089	-0.122	0.008	0.013	0.000000	0.000000	-1156.62	581.71
2	FID	HRC-S-4	6.98	5091	0.145	-0.111	0.006	0.012	0.000000	0.000000	1244.43	584.18
3	GUIDE	746462456	8.38	5089	-0.099	0.079	0.061	0.099	278.652171	-10.530173	-1309.33	979.55
4	GUIDE	746462392	8.56	5091	0.027	-0.018	0.087	0.137	279.038421	-10.890715	-71.26	2400.25
5	GUIDE	746995400	9.49	5087	0.149	-0.110	0.091	0.146	278.078957	-11.289885	1513.26	-922.92
6	GUIDE	746461728	9.80	5016	-0.080	0.051	0.130	0.203	278.986921	-10.530755	-1357.60	2162.95
7	UNUSED		0.00	0	0.000	0.000	0.000	0.000	0.000000	0.000000	0.00	0.00

2.4 Star Slots

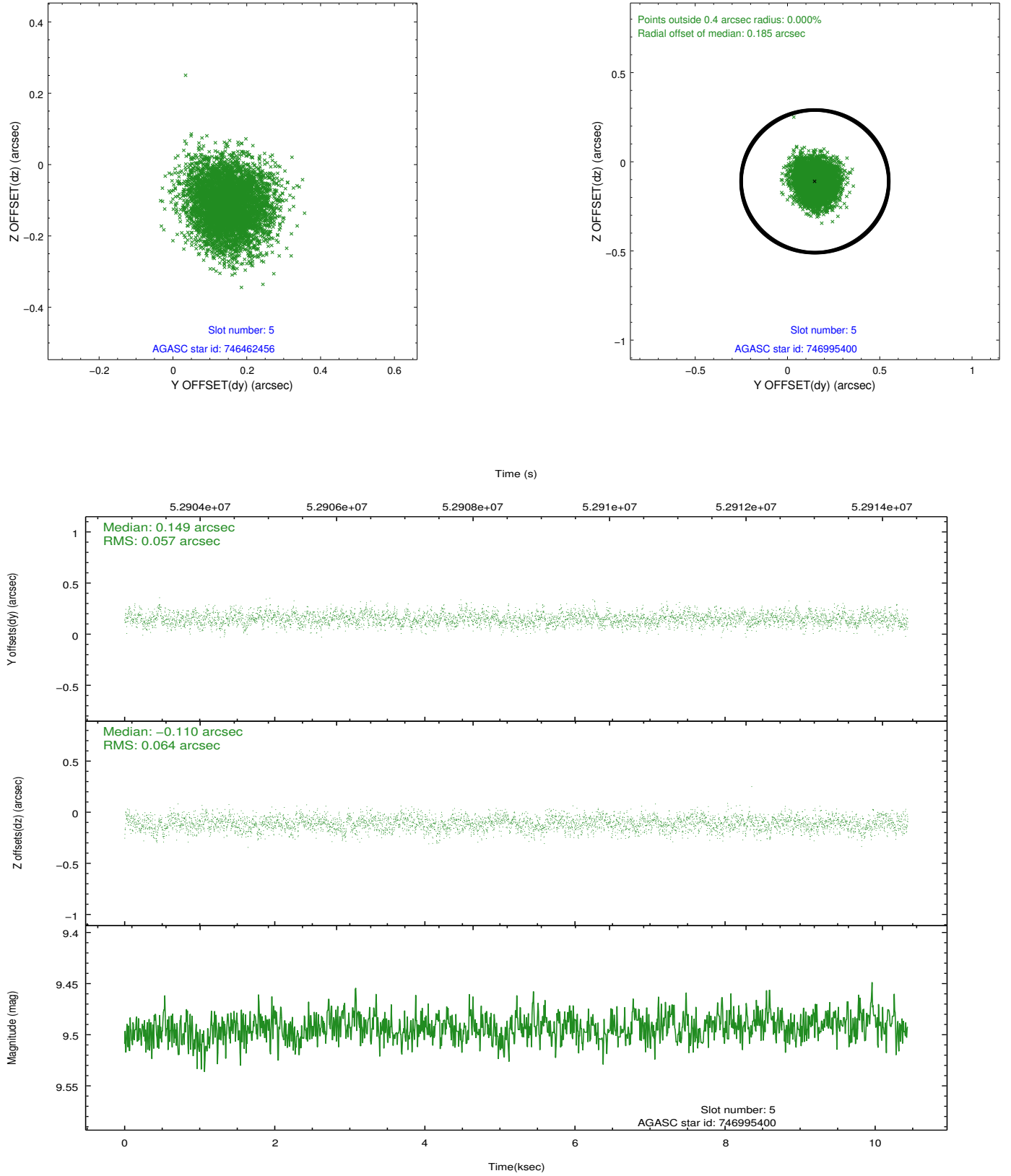
2.4.1 Slot 3



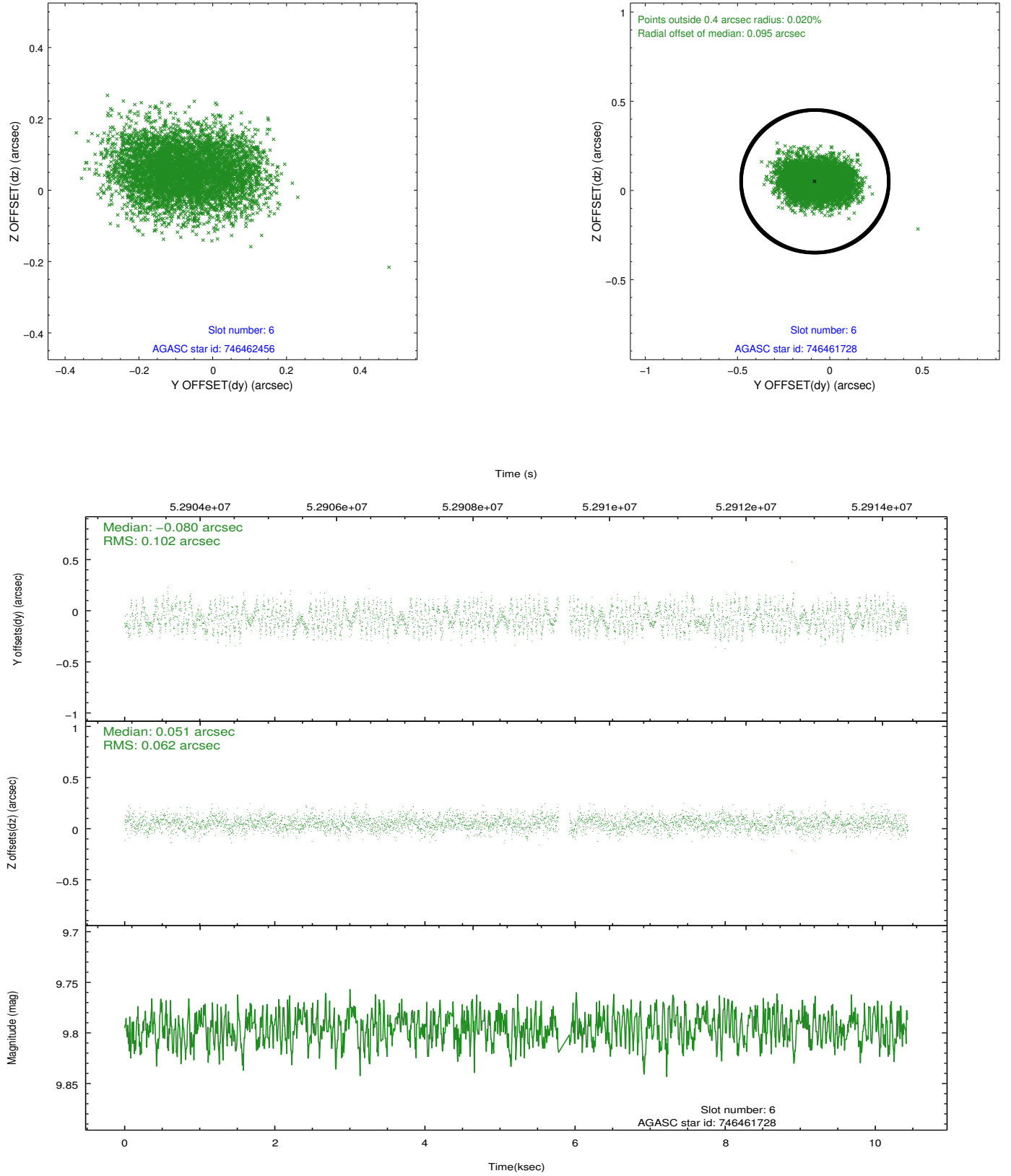
2.4.2 Slot 4



2.4.3 Slot 5

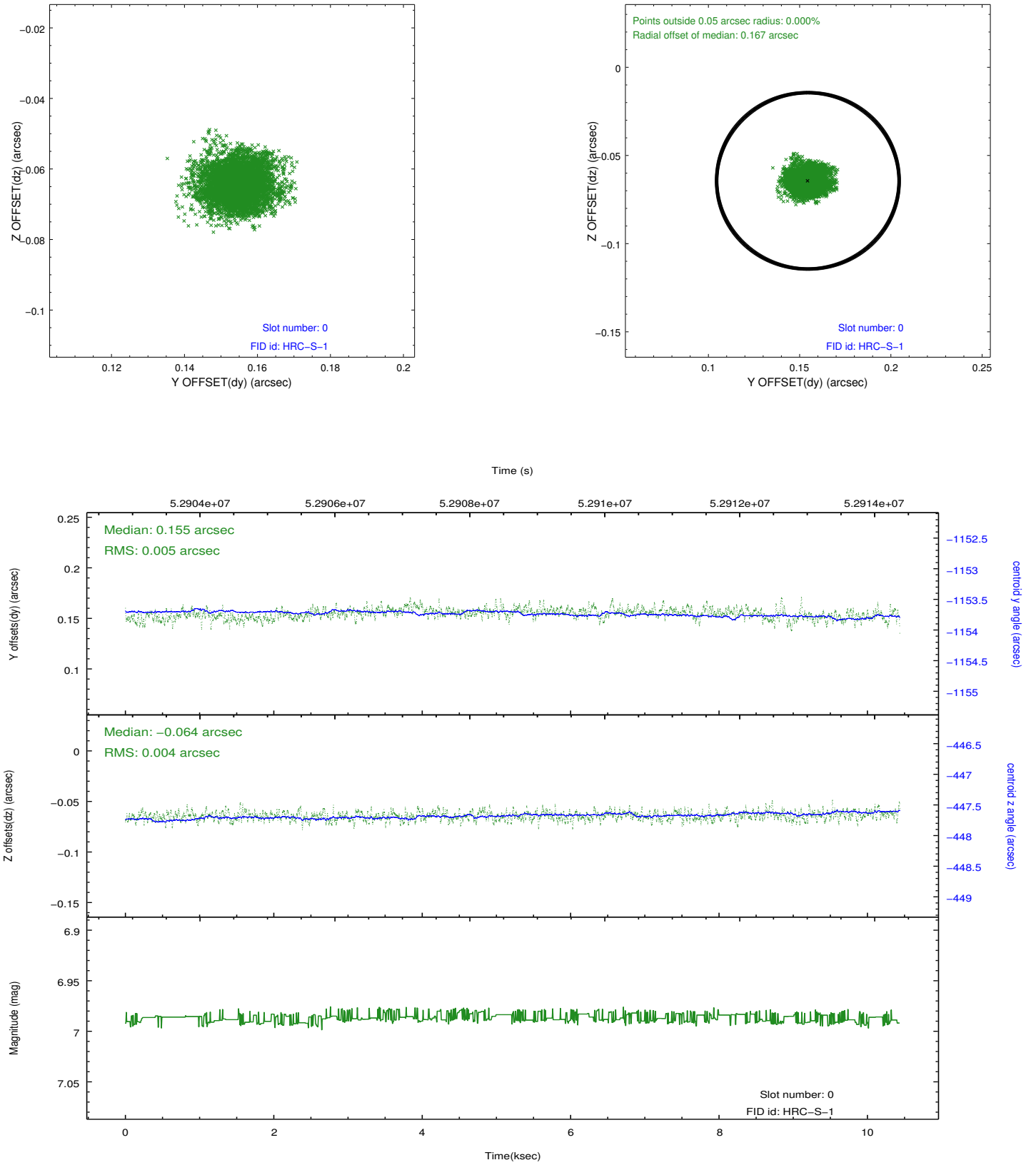


2.4.4 Slot 6

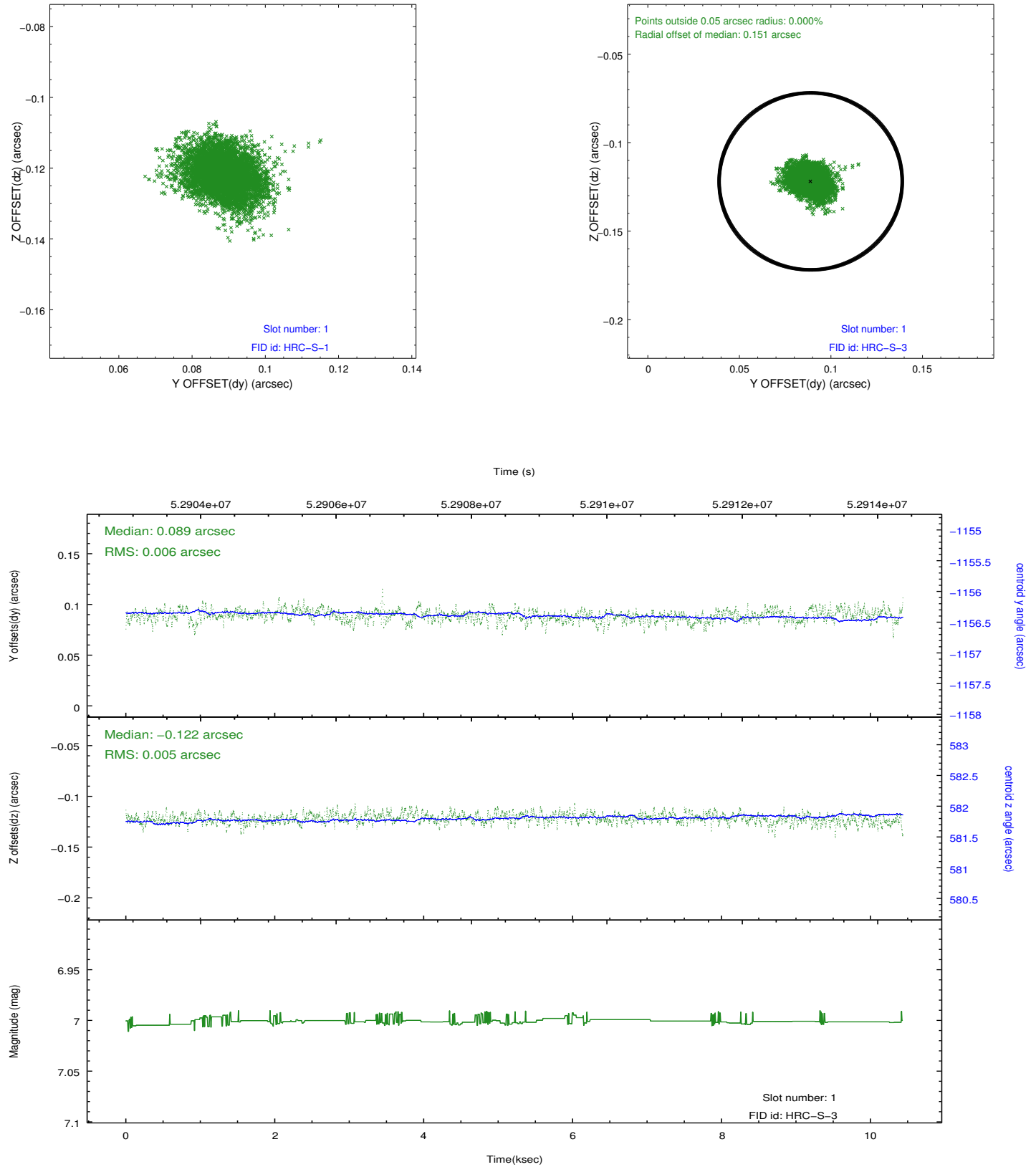


2.5 FID Slots

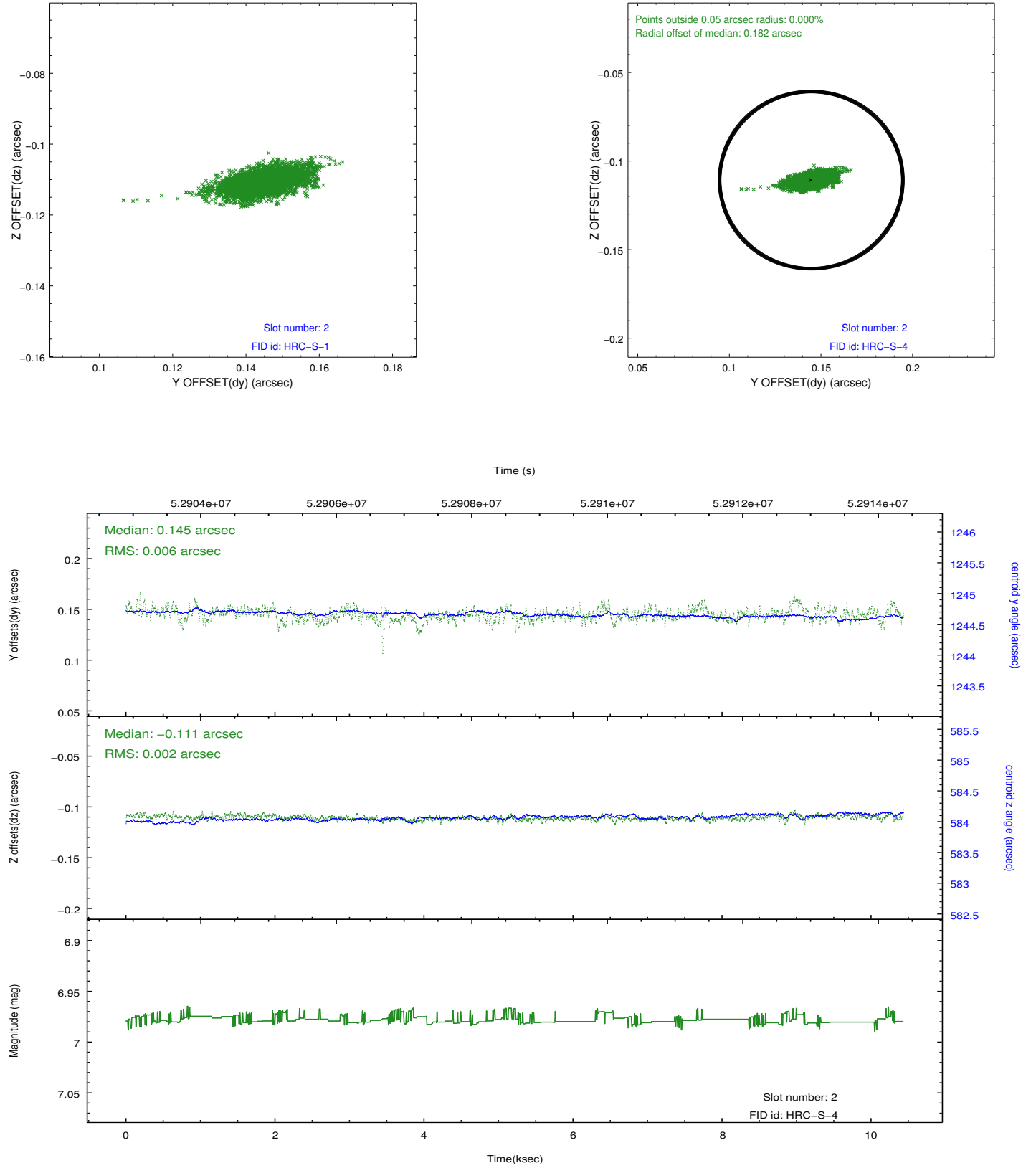
2.5.1 Slot 0



2.5.2 Slot 1



2.5.3 Slot 2



3 Point Sources

A Summary

A.1 Status

V&V Scientist	Joy Nichols
V&V Date (YYYY-MM-DD)	2010.01.29
V&V Edition	1
V&V Disposition and Status	OK
V&V Charge Time	9.801

A.2 Comments

Charge time for this ObsId remains at original value of 9.801 ksec, although with the current processing the charge time would have been 9.723 ksec.

=====

This target is a Standard Candle with well known continuum spectrum. It is used to measure absolute sensitivity and to monitor detector performance.

=====

This observation was performed with a large SIM offset. As a result, the fid light positions are offset beyond normally expected ranges, but the fid light position correction has compensated for this offset.

=====

Four guide stars were used for pointing control of this observation.

The DTF and rate plots in mtlhrc are ratty.