

V&V Reference Report

L2 ASCDS Version : 8.2.1

Observation 1203 - L2 Version 3

Chandra X-Ray Center

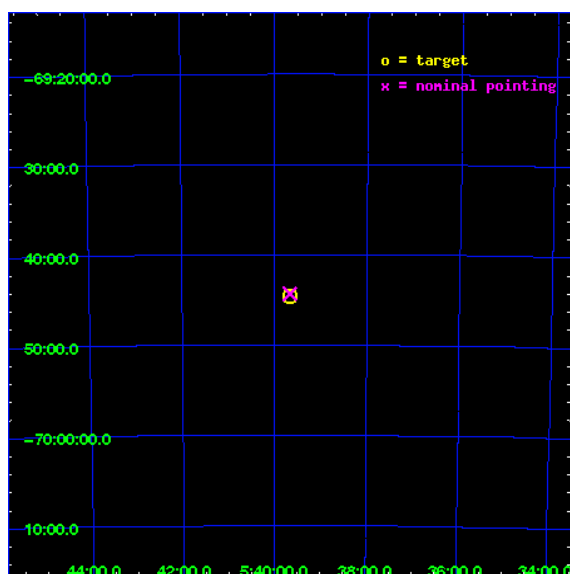
L2 Processing Date : Jan 12 2010

Contents

1	Front	2
2	OBI	3
2.1	OBI	3
2.1.1	Images	3
2.1.2	Parameters	4
2.1.3	Events	4
2.2	Compared Parameters	5
2.3	Aspect	6
2.4	Star Slots	9
2.4.1	Slot 3	9
2.4.2	Slot 4	10
2.4.3	Slot 5	11
2.4.4	Slot 7	12
2.5	FID Slots	13
2.5.1	Slot 0	13
3	Point Sources	14
A	Summary	15
A.1	Status	15
A.2	Comments	15

1 Front

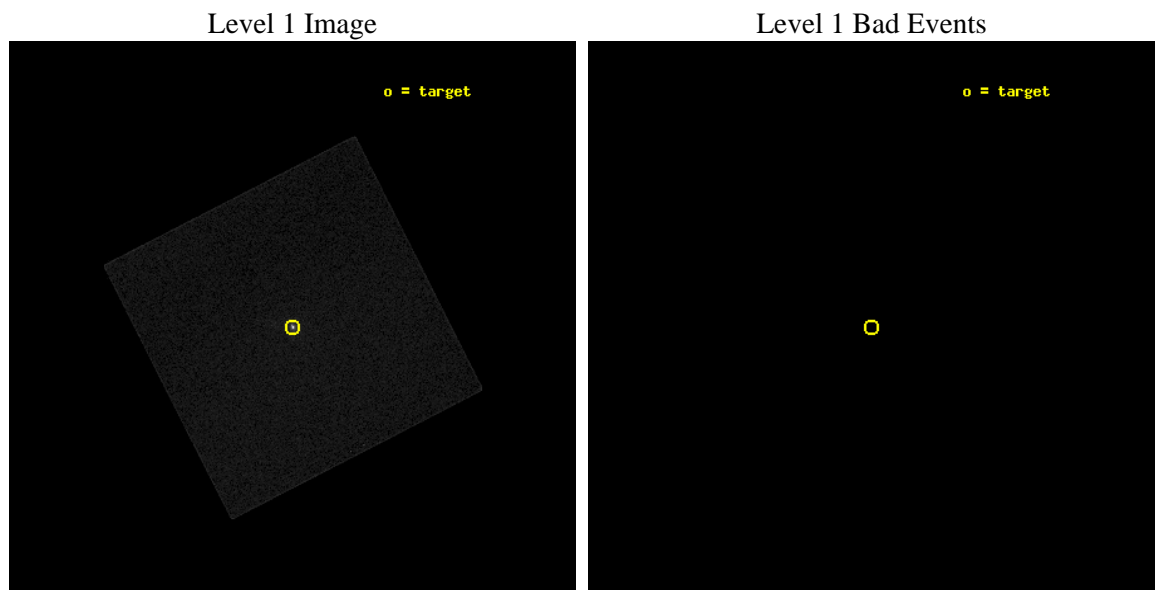
seq_num	480153	Sequence number
obs_id	1203	Observation id
title	 	Proposal title
observer	Dr. CXC Calibration	Principal investigator
object	LMC X-1	Source name
ra_targ	84.914583	Observer's specified target RA
dec_targ	-69.743611	Observer's specified target Dec
ra_nom	84.916223466893	Nominal RA
dec_nom	-69.738833102984	Nominal Dec
roll_nom	107.98919887678	Nominal Roll
revision	3	Processing version of data
ontime	0.0	[s]
livetime	0.0	Ontime multiplied by DTCOR
l2events	0	Number of level 2 events



2 OBI

2.1 OBI

2.1.1 Images



2.1.2 Parameters

obi_num	0	Obi number	sched_exp_time	3600.000000	Scheduled observation exposure time
ascdsver	8.2.1	Processing system revision	ontime	0.0	[s]
caldbver	4.1.5	 	l1events	295595	Number of level 1 events
date	2010-01-12T15:35:29	Date and time of file creation			
revision	4	Processing version of data			

2.1.3 Events

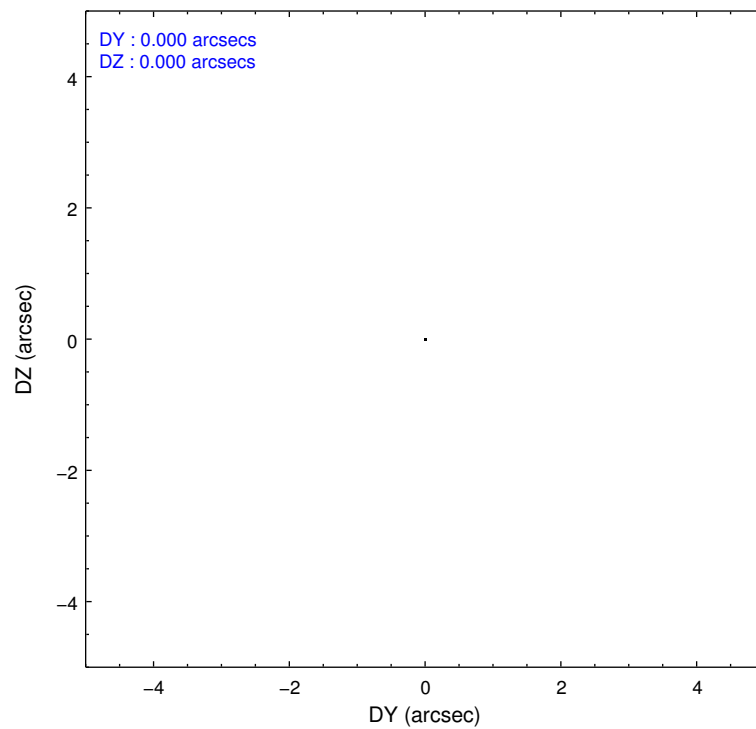
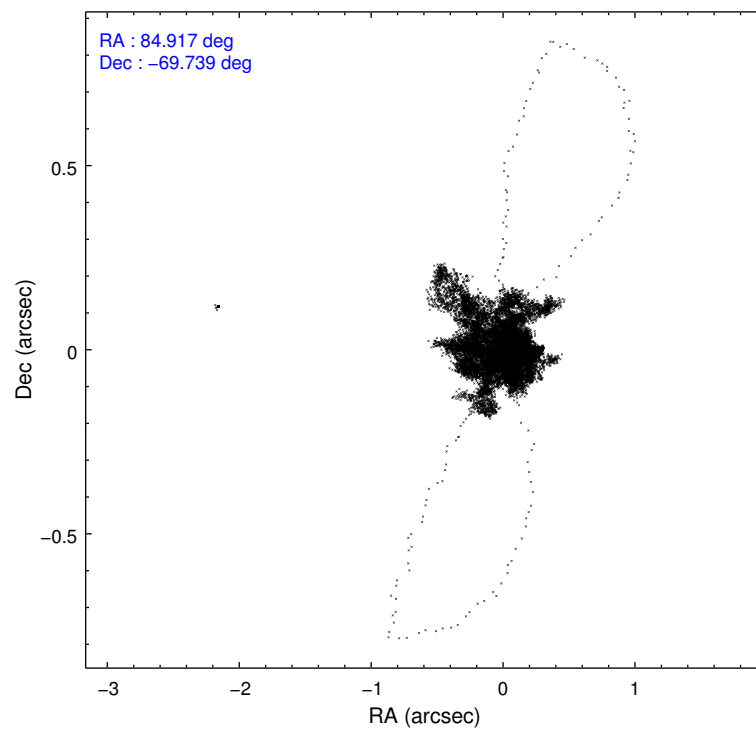
Level 1 Events

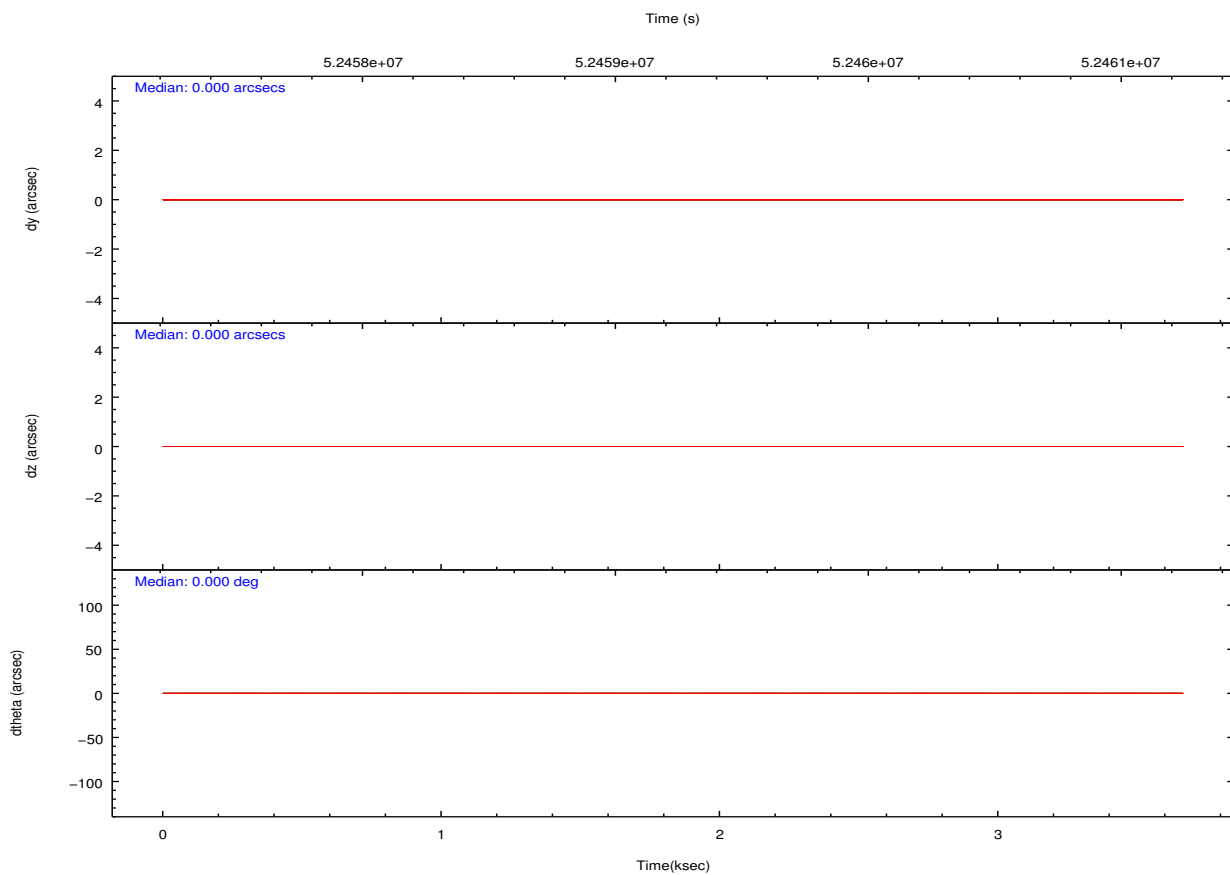
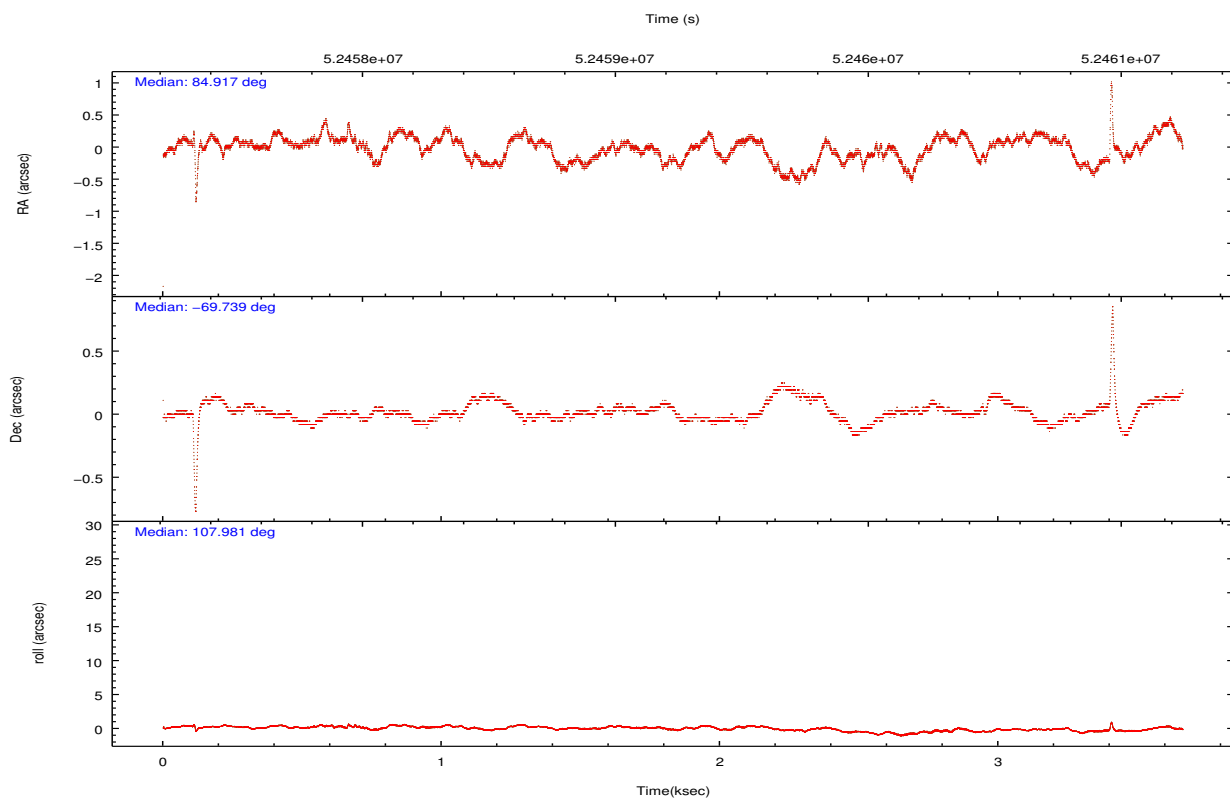
	segment 0
level 1 events	295595
rejected events	0
rejected %	0%

2.2 Compared Parameters

Parameter	Planned	Actual	Parameter	Planned	Actual
Instrument	HRC	HRC	Obspar format version number	6	6
Detector	HRC-I	HRC-I	Obspar file type	PREDICTED	ACTUAL
Grating	NONE	NONE	Obspar update status	NONE	UPDATED
Data mode	OBSERVING	OBSERVING			
Observation mode	POINTING	POINTING			
Pointing RA	84.974973	84.91622346689341			
Pointing Dec	-69.757107	-69.73883310298369			
Pointing Roll	108.139814	107.9891988767841			
SIM focus pos (mm)	-0.040293	0.255451383487682			
SIM defocus (mm)	1	1.295744004146556			
SIM translation stage pos (mm)	126.985494	126.9829799899862			
SIM translation stage offset (mm)	0	0.002508901615314585			
Observation start time	52457464.184000	52457396.822176			
Observation start date	1999-08-31T03:30:00	1999-08-31T03:29:56			
Observation end time	52461064.184000	52461062.222308			
Observation end date	1999-08-31T04:30:00	1999-08-31T04:31:02			

2.3 Aspect



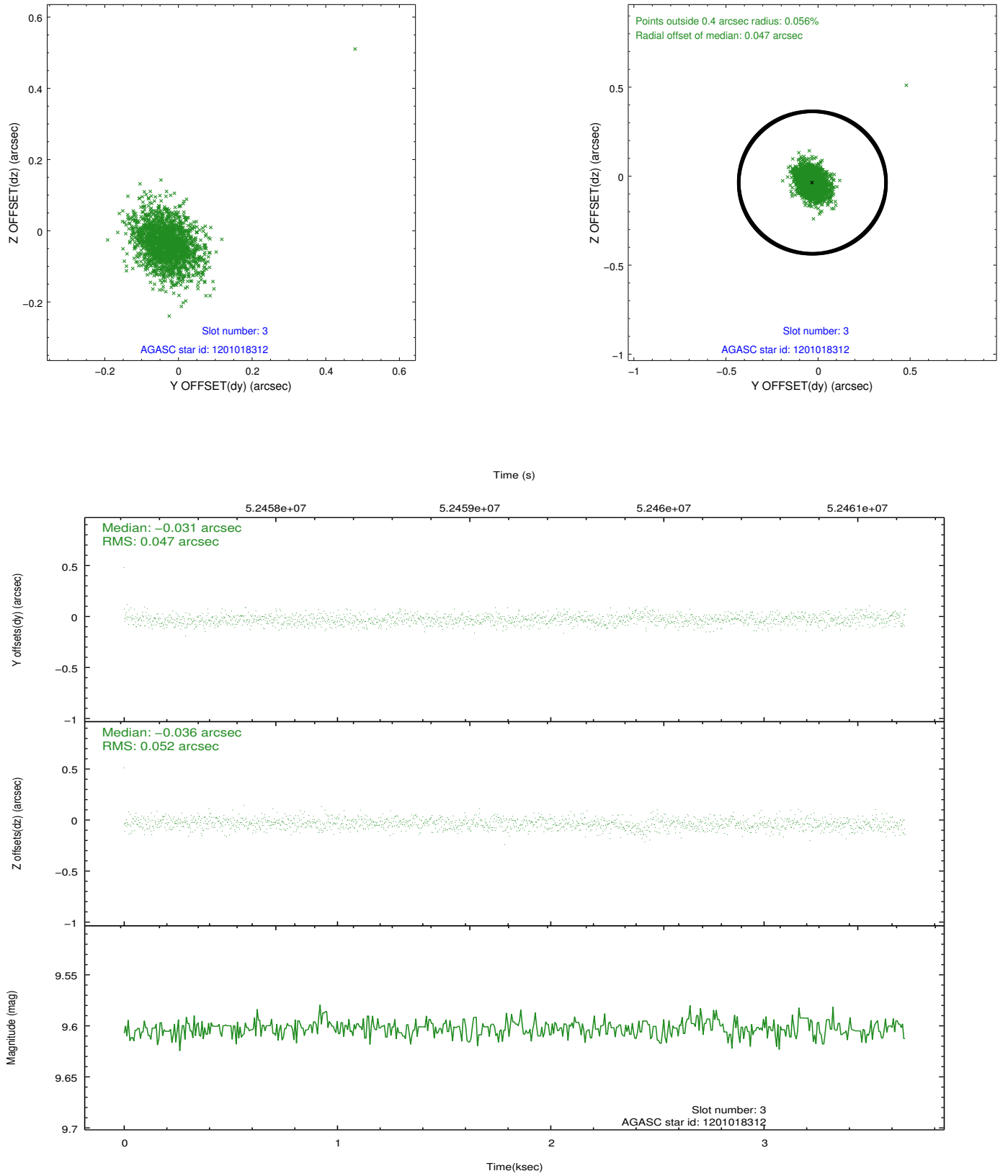


Slot Statistics

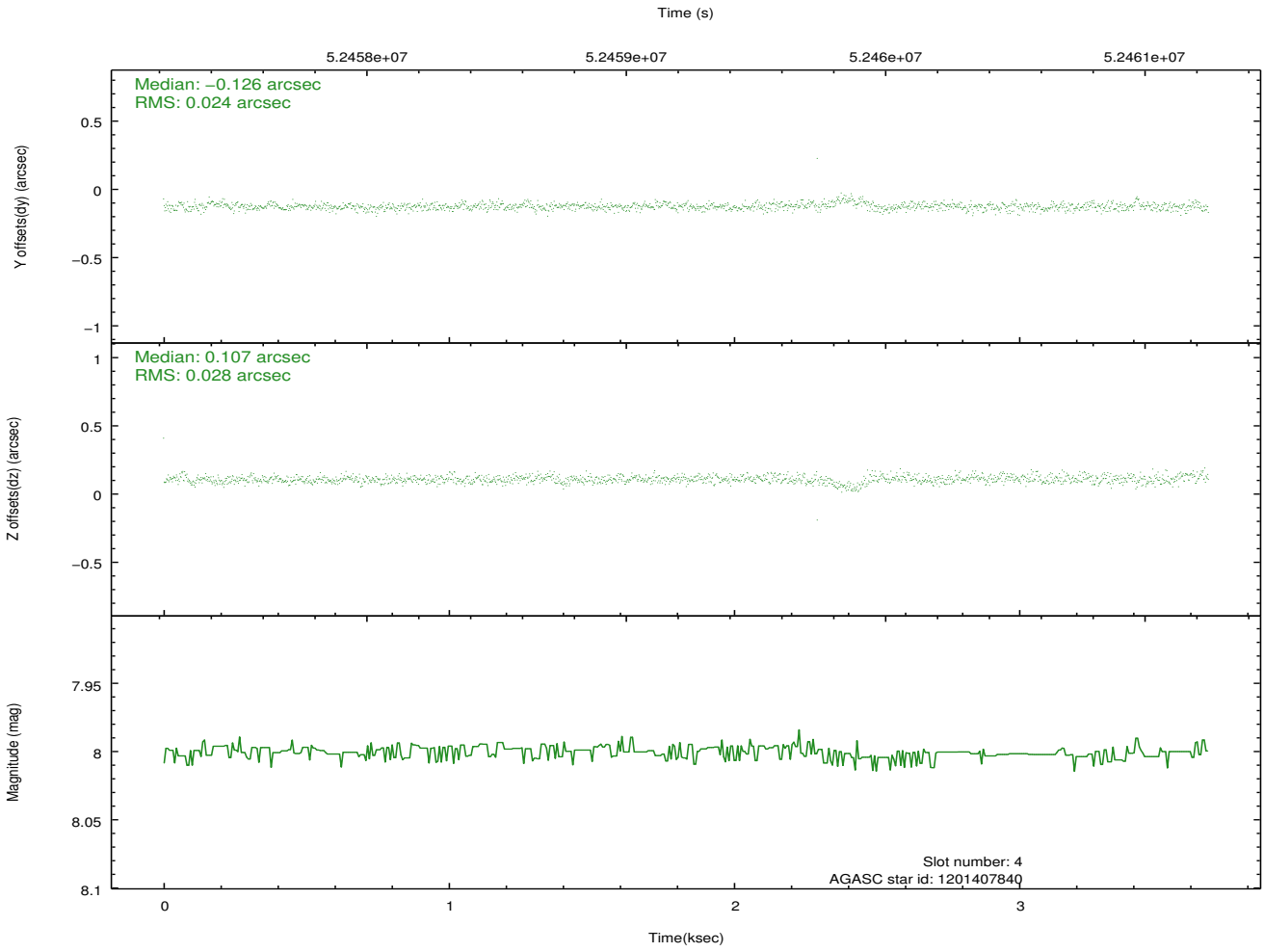
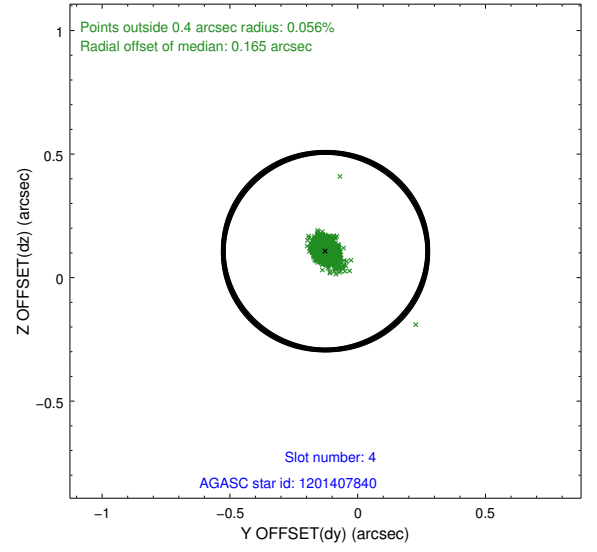
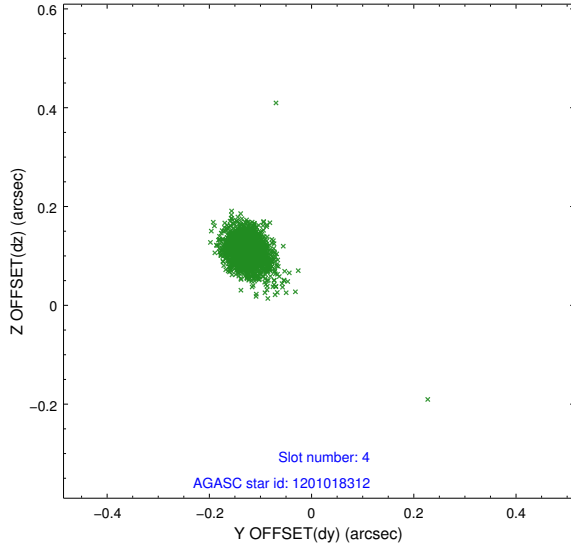
slot	status	id	mag	n_pts	med_dy	med_dz	dr1	dr2	ra	dec	mean_y	mean_z
0	BAD	HRC-I-1	6.96	373	-0.529	1.561	0.020	0.051	0.000000	0.000000	-755.82	-1286.38
1	UNUSED		0.00	0	0.000	0.000	0.000	0.000	0.000000	0.000000	0.00	0.00
2	UNUSED		0.00	0	0.000	0.000	0.000	0.000	0.000000	0.000000	0.00	0.00
3	GUIDE	1201018312	9.60	1787	-0.031	-0.036	0.072	0.120	86.298231	-69.115627	1649.21	-2326.22
4	GUIDE	1201407840	8.00	1788	-0.126	0.107	0.036	0.061	83.696303	-70.172201	-948.65	1953.27
5	GUIDE	1201411368	10.05	1726	0.140	-0.179	0.091	0.159	83.629696	-70.495613	-2040.50	2371.10
6	UNUSED		0.00	0	0.000	0.000	0.000	0.000	0.000000	0.000000	0.00	0.00
7	GUIDE	1201540776	9.60	1783	0.022	0.102	0.067	0.111	85.107945	-69.858480	-399.01	-41.02

2.4 Star Slots

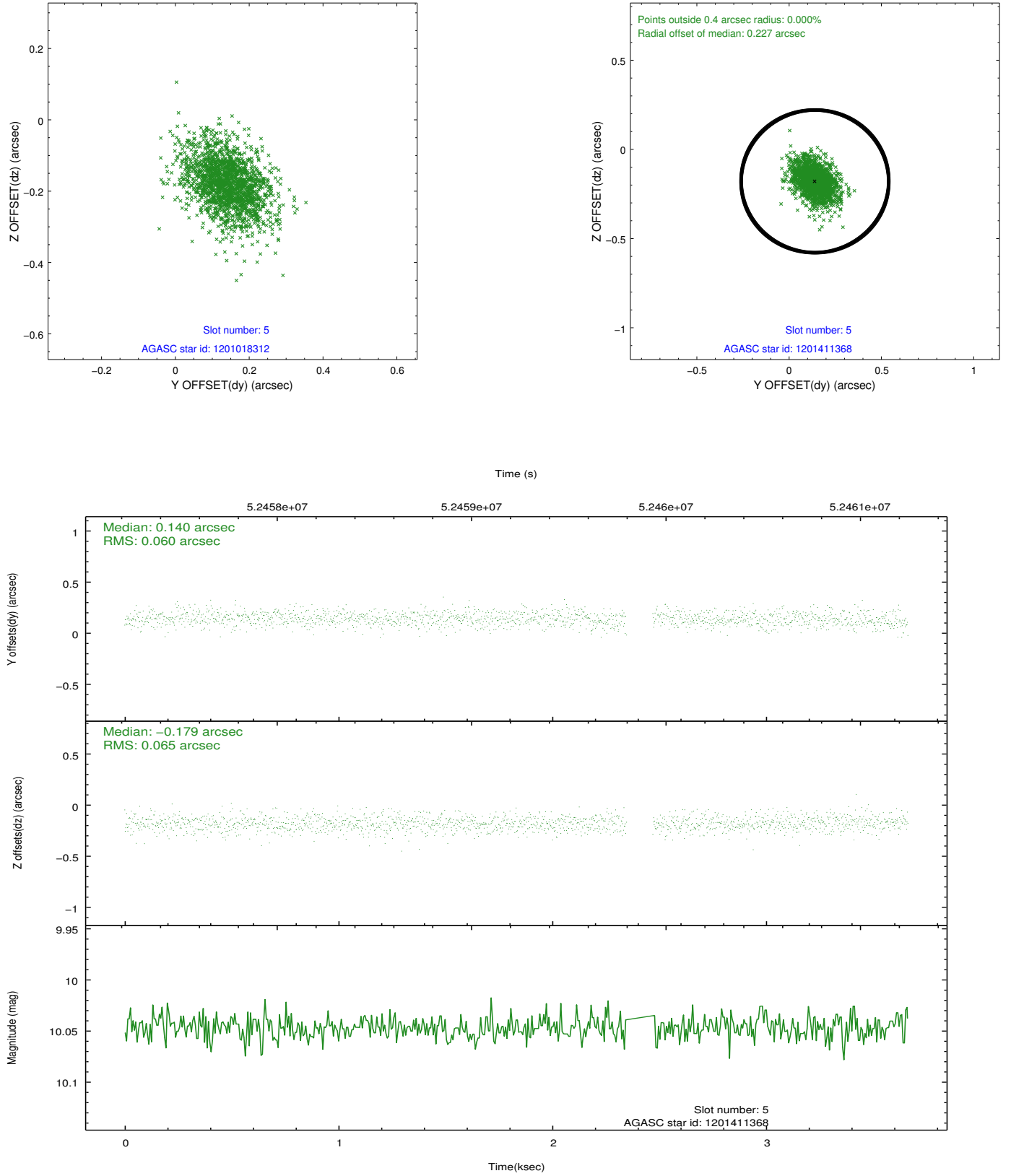
2.4.1 Slot 3



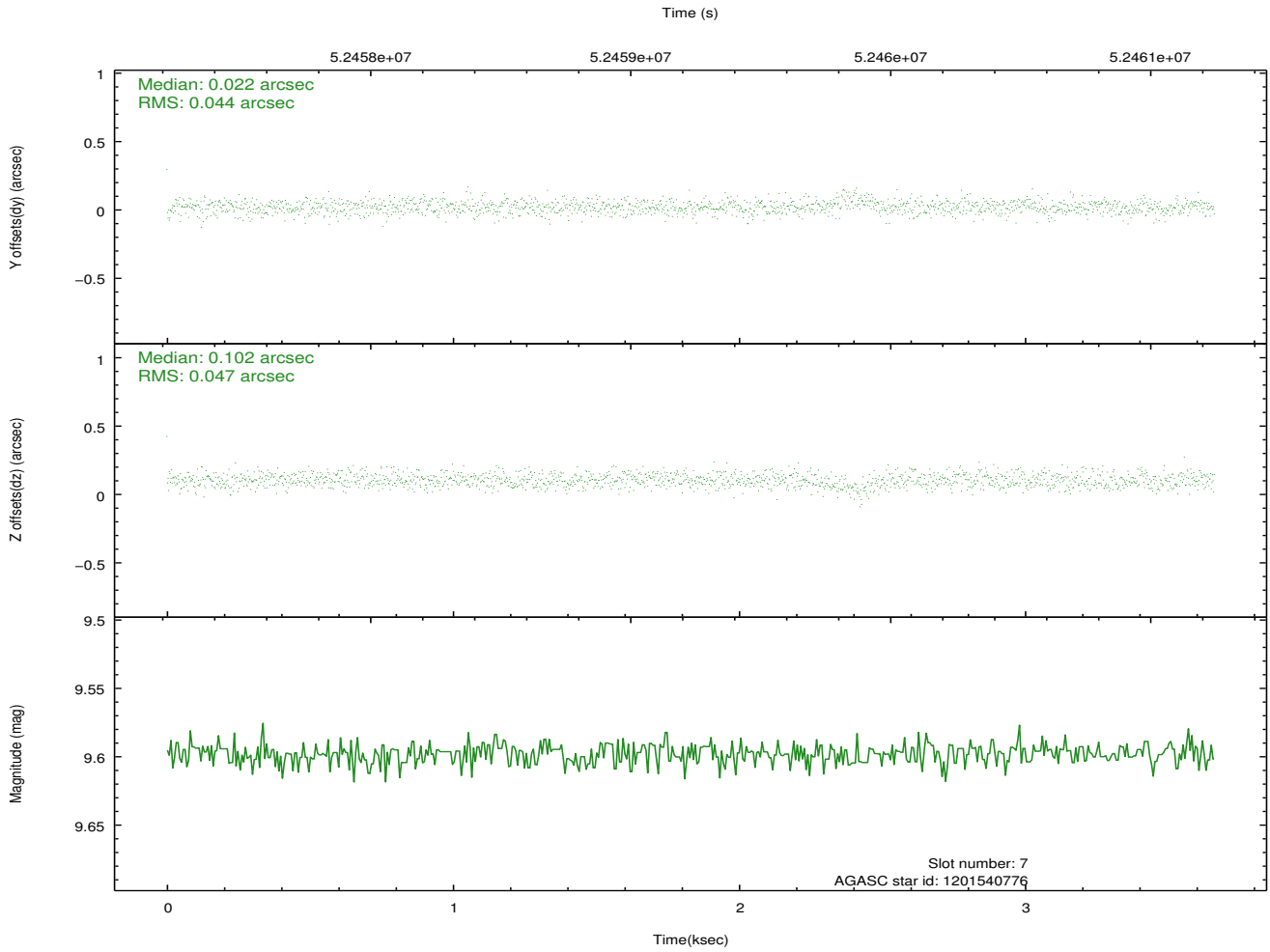
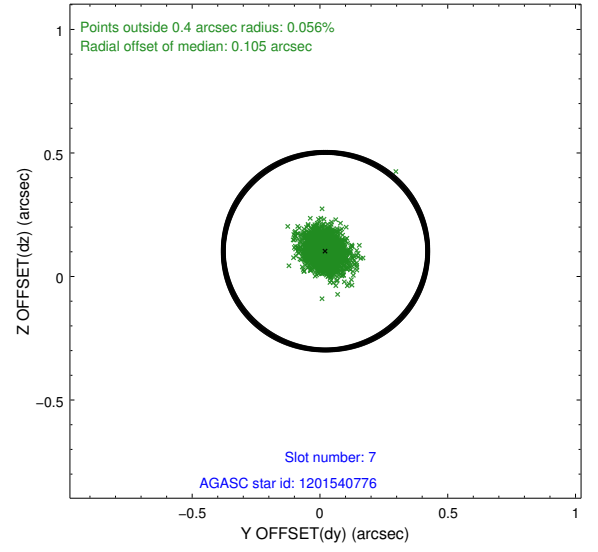
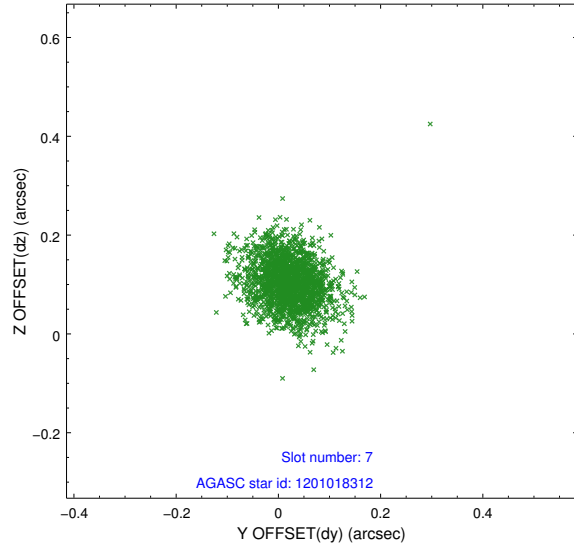
2.4.2 Slot 4



2.4.3 Slot 5

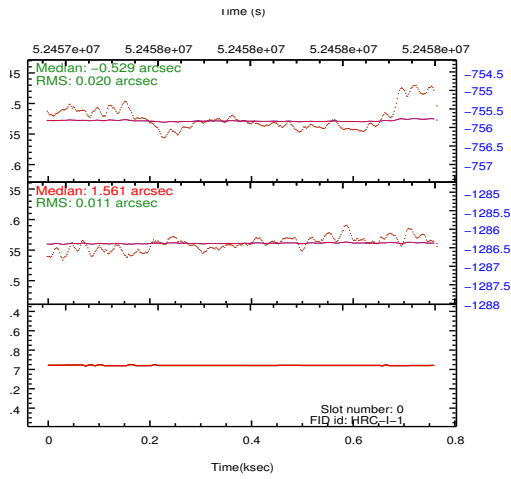
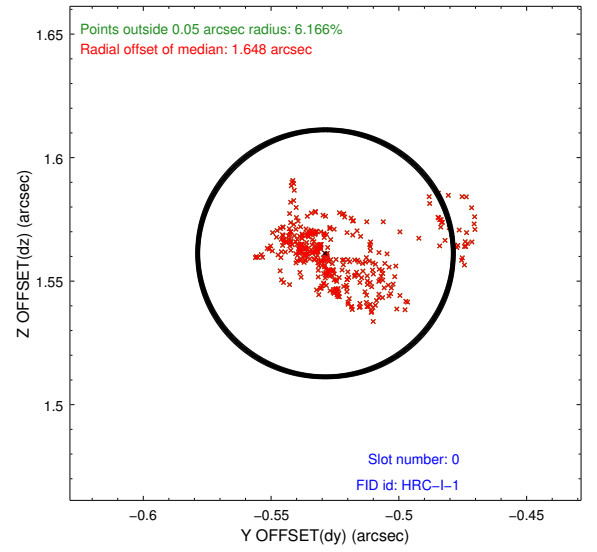
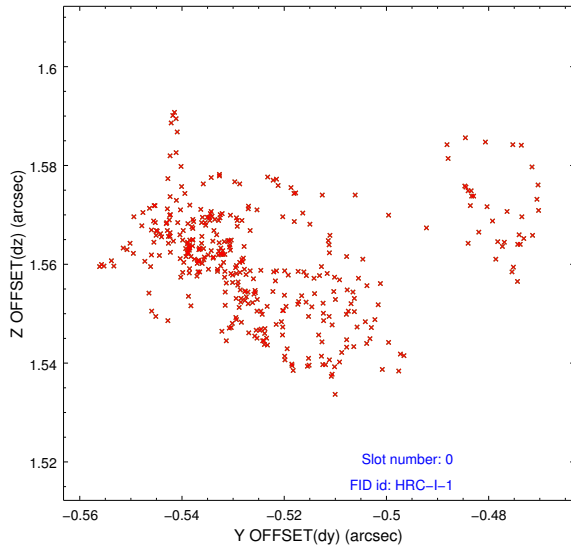


2.4.4 Slot 7



2.5 FID Slots

2.5.1 Slot 0



3 Point Sources

A Summary

A.1 Status

V&V Scientist	Joy Nichols
V&V Date (YYYY-MM-DD)	2010.01.20
V&V Edition	1
V&V Disposition and Status	OK
V&V Charge Time	0

A.2 Comments

All 3 fid light were blocked by the HRC shutter. The aspect solution does not have any explicit boresight alignment information. Also, there is no guide star in slot 6 because none was planned for this observation.

=====

The lack of fid light data means there is no GTI time, so the event 2 file is empty.