

V&V Reference Report

L2 ASCDS Version : 8.1.2

Observation 1163 - L2 Version 6

Chandra X-Ray Center

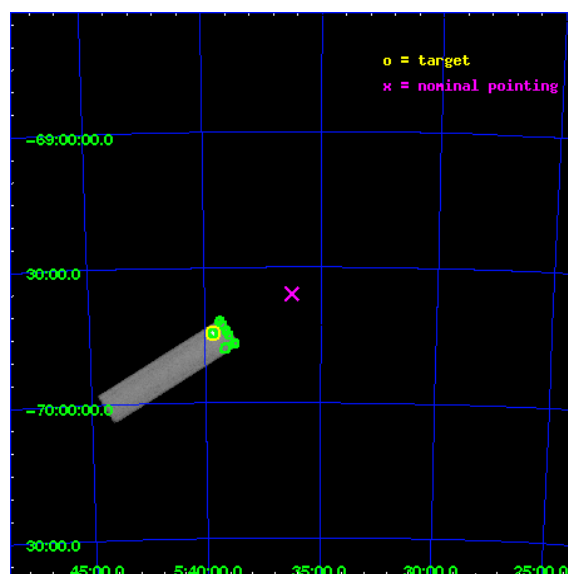
L2 Processing Date : Dec 2 2009

Contents

1	Front	2
2	OBI	3
2.1	OBI	3
2.1.1	Images	3
2.1.2	Parameters	4
2.1.3	Events	4
2.2	Compared Parameters	5
2.3	Aspect	6
2.4	Star Slots	9
2.4.1	Slot 3	9
2.4.2	Slot 4	10
2.4.3	Slot 5	11
2.4.4	Slot 6	12
2.4.5	Slot 7	13
2.5	FID Slots	14
2.5.1	Slot 0	14
2.5.2	Slot 1	15
2.5.3	Slot 2	16
3	Point Sources	17
A	Summary	18
A.1	Status	18
A.2	Comments	18

1 Front

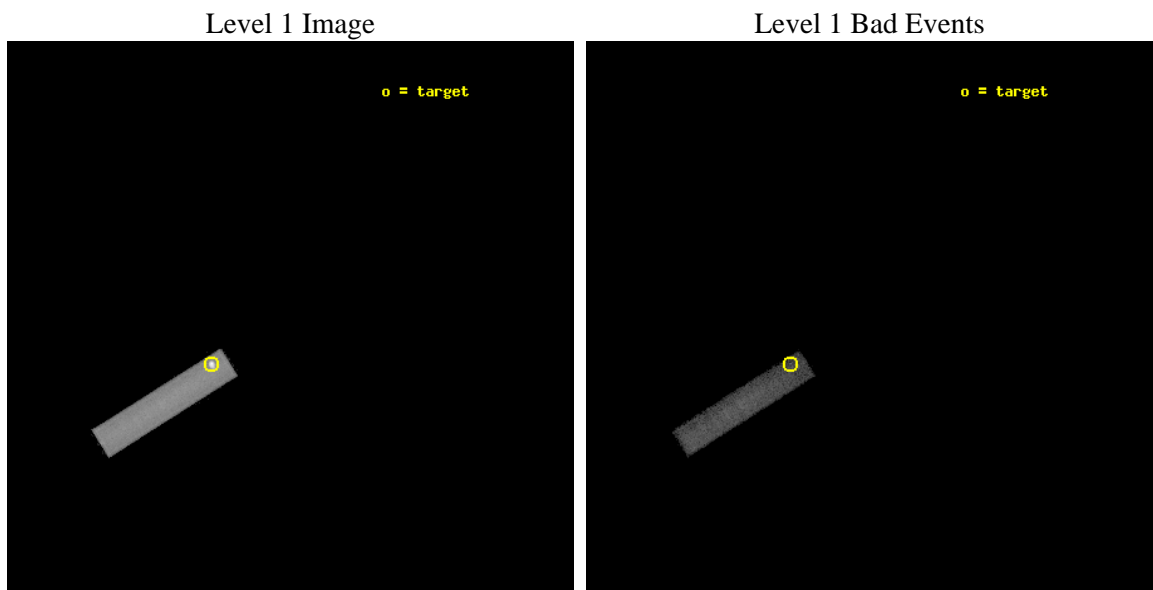
seq_num	480113	Sequence number
obs_id	1163	Observation id
title	 	Proposal title
observer	Dr. CXC Calibration	Principal investigator
object	LMC X-1	Source name
ra_targ	84.914583	Observer's specified target RA
dec_targ	-69.743611	Observer's specified target Dec
ra_nom	84.06179551291	Nominal RA
dec_nom	-69.599425591884	Nominal Dec
roll_nom	327.81717443811	Nominal Roll
revision	6	Processing version of data
ontime	2201.9563299939	[s]
livetime	2185.6623848716	Ontime multiplied by DTCOR
l2events	112515	Number of level 2 events



2 OBI

2.1 OBI

2.1.1 Images



2.1.2 Parameters

obi_num	1	Obi number	sched_exp_time	2000.000000	Scheduled observation exposure time
ascdsver	8.1.2	Processing system revision	ontime	2201.9563299939	[s]
caldbver	4.1.4	 	l1events	156306	Number of level 1 events
date	2009-12-02T19:15:17	Date and time of file creation			
revision	5	Processing version of data			

2.1.3 Events

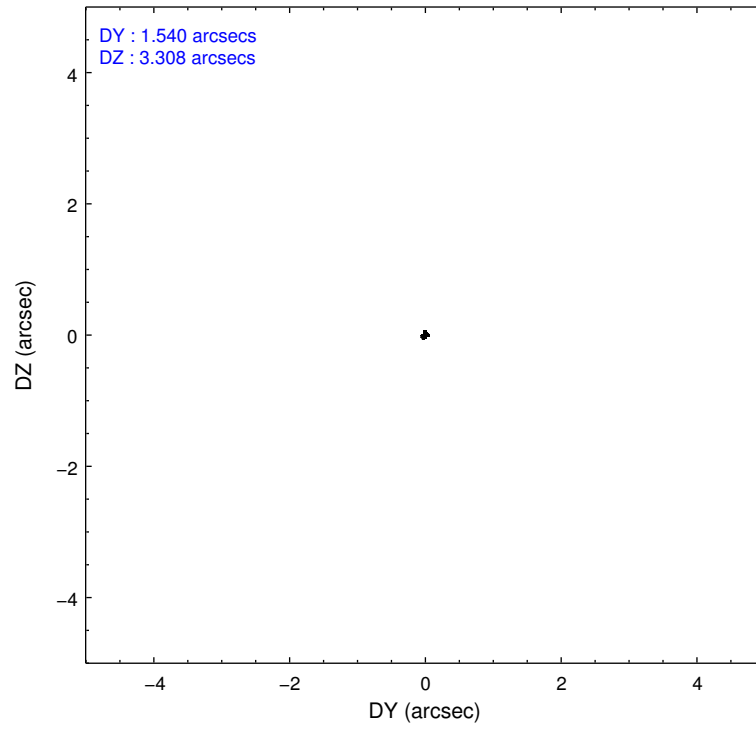
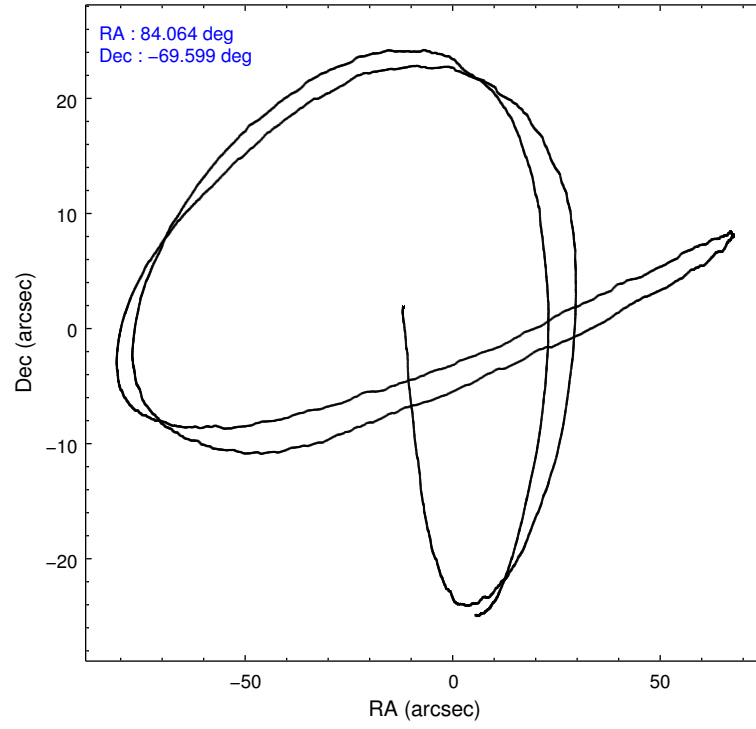
Level 1 Events

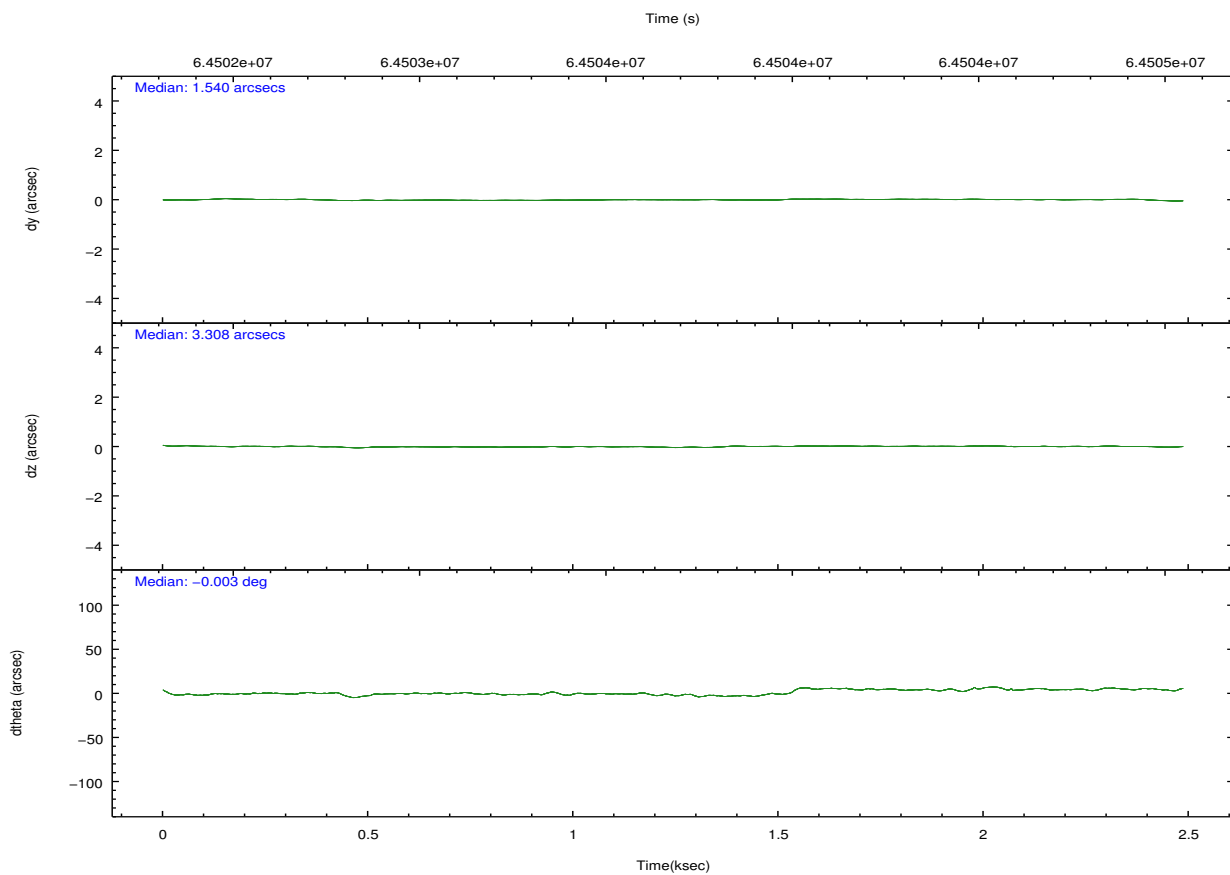
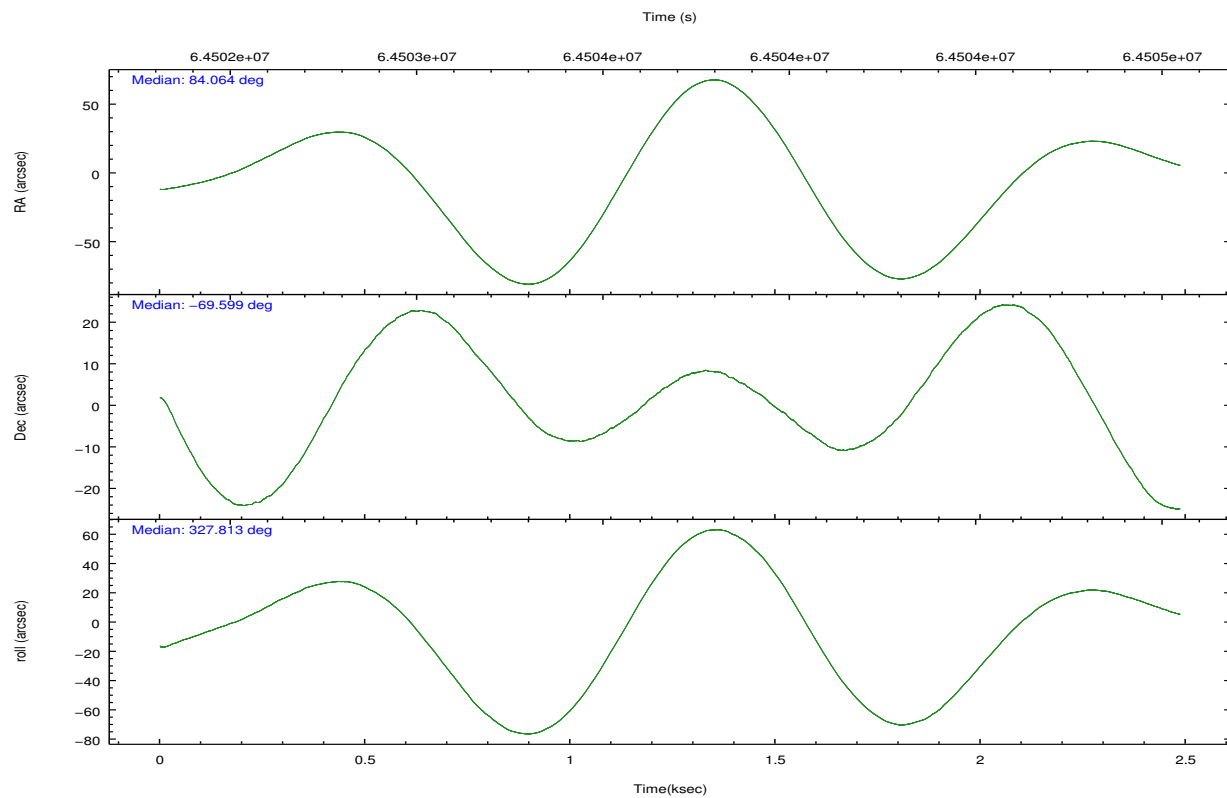
	segment 1	segment 2	segment 3
level 1 events	0	52	156254
rejected events	0	33	34274
rejected %	0%	63%	21%

2.2 Compared Parameters

Parameter	Planned	Actual	Parameter	Planned	Actual
Instrument	HRC	HRC	Obspar format version number	6	6
Detector	HRC-S	HRC-S	Obspar file type	PREDICTED	ACTUAL
Grating	NONE	NONE	Obspar update status	NONE	UPDATED
Data mode	OBSERVING	OBSERVING			
Observation mode	POINTING	POINTING			
Pointing RA	83.978142	84.06179551291018			
Pointing Dec	-69.598913	-69.59942559188444			
Pointing Roll	327.671431	327.8171744381086			
SIM focus pos (mm)	-1.528523	-1.428180813131781			
SIM defocus (mm)	0.004813771043328752	0.1051558262725154			
SIM translation stage pos (mm)	250.455976	250.466033080201			
SIM translation stage offset (mm)	0	-0.01005468664627074			
Observation start time	64502924.184000	64502257.849802			
Observation start date	2000-01-17T13:27:40	2000-01-17T13:17:37			
Observation end time	64504924.184000	64505058.149904			
Observation end date	2000-01-17T14:01:00	2000-01-17T14:04:18			

2.3 Aspect



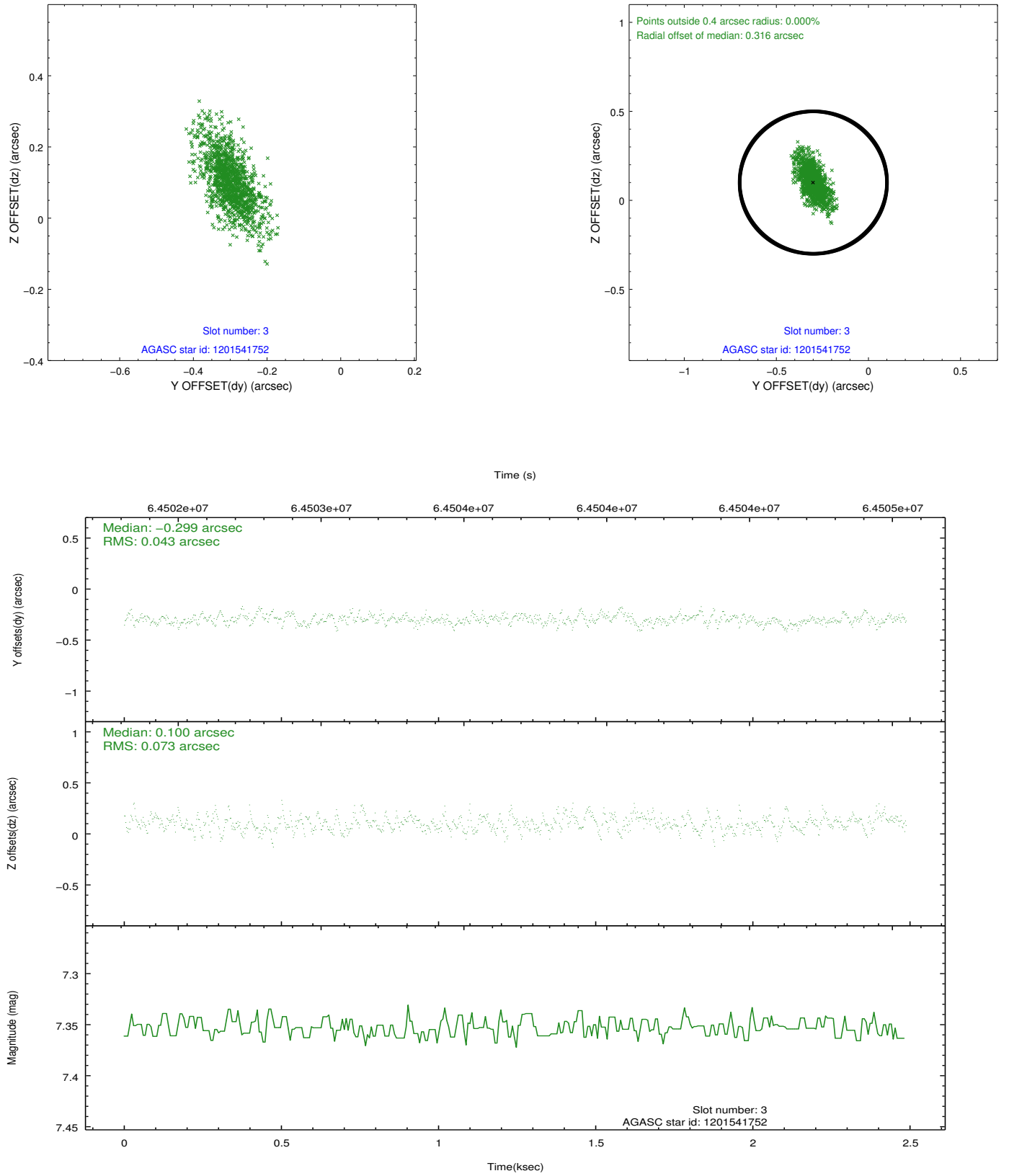


Slot Statistics

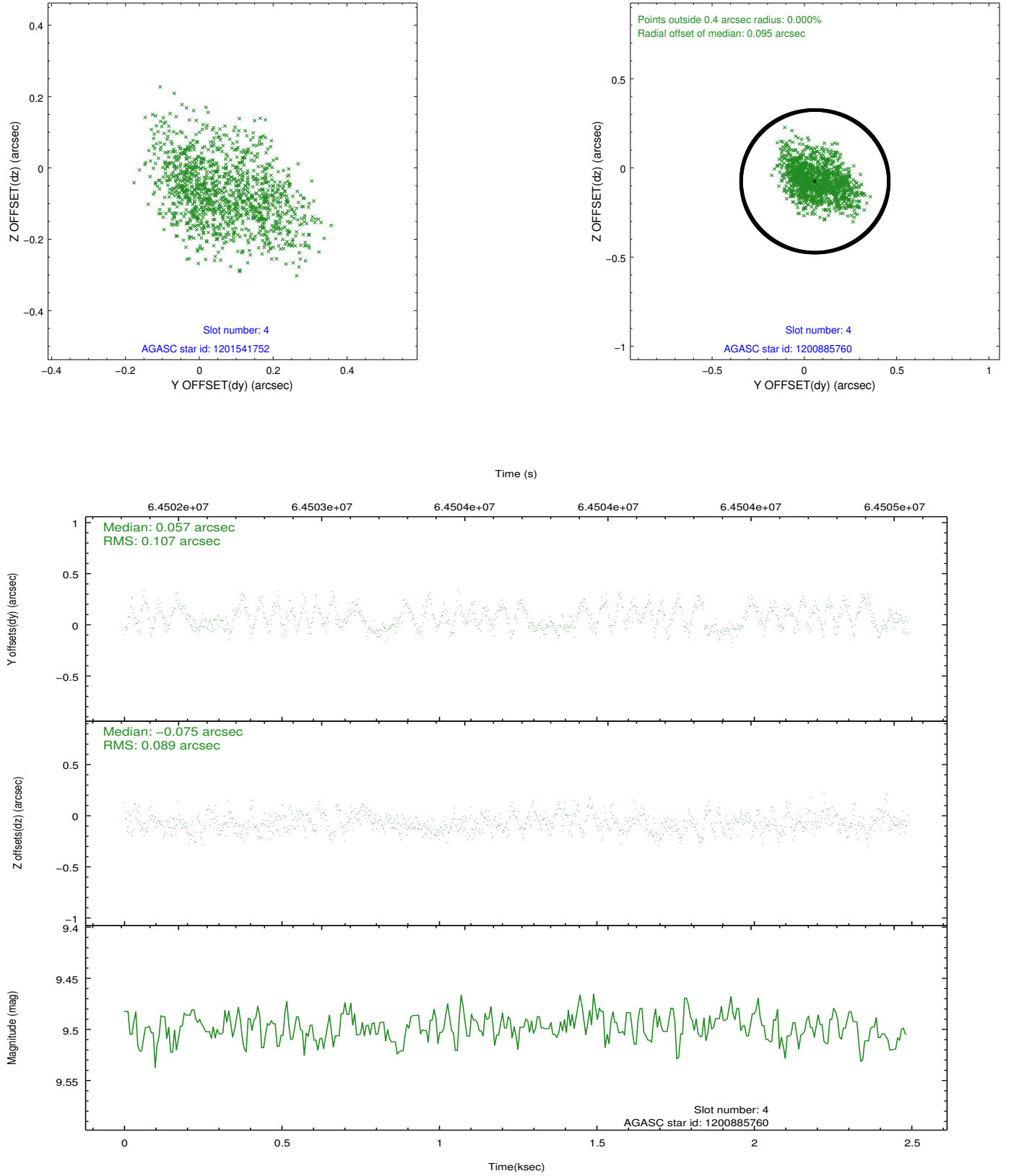
slot	status	id	mag	n_pts	med_dy	med_dz	dr1	dr2	ra	dec	mean_y	mean_z
0	FID	HRC-S-1	6.97	607	0.114	-0.060	0.008	0.013	0.000000	0.000000	-1155.58	-451.66
1	FID	HRC-S-3	6.99	607	0.155	-0.142	0.013	0.021	0.000000	0.000000	-1160.15	577.04
2	FID	HRC-S-4	6.93	607	0.120	-0.094	0.007	0.014	0.000000	0.000000	1240.79	581.31
3	GUIDE	1201541752	7.35	1214	-0.299	0.100	0.085	0.163	85.373891	-70.033762	2295.38	-421.29
4	GUIDE	1200885760	9.50	1213	0.057	-0.075	0.150	0.236	83.723637	-68.777667	-1861.04	2319.96
5	GUIDE	1201406992	9.27	1211	0.070	-0.050	0.107	0.187	83.682859	-69.471866	-562.28	188.44
6	GUIDE	1200886544	9.57	1213	0.077	0.064	0.115	0.201	82.995430	-69.160893	-1903.49	651.19
7	GUIDE	1201542232	9.70	1213	0.083	-0.047	0.134	0.218	84.533398	-70.465667	2232.24	-2280.88

2.4 Star Slots

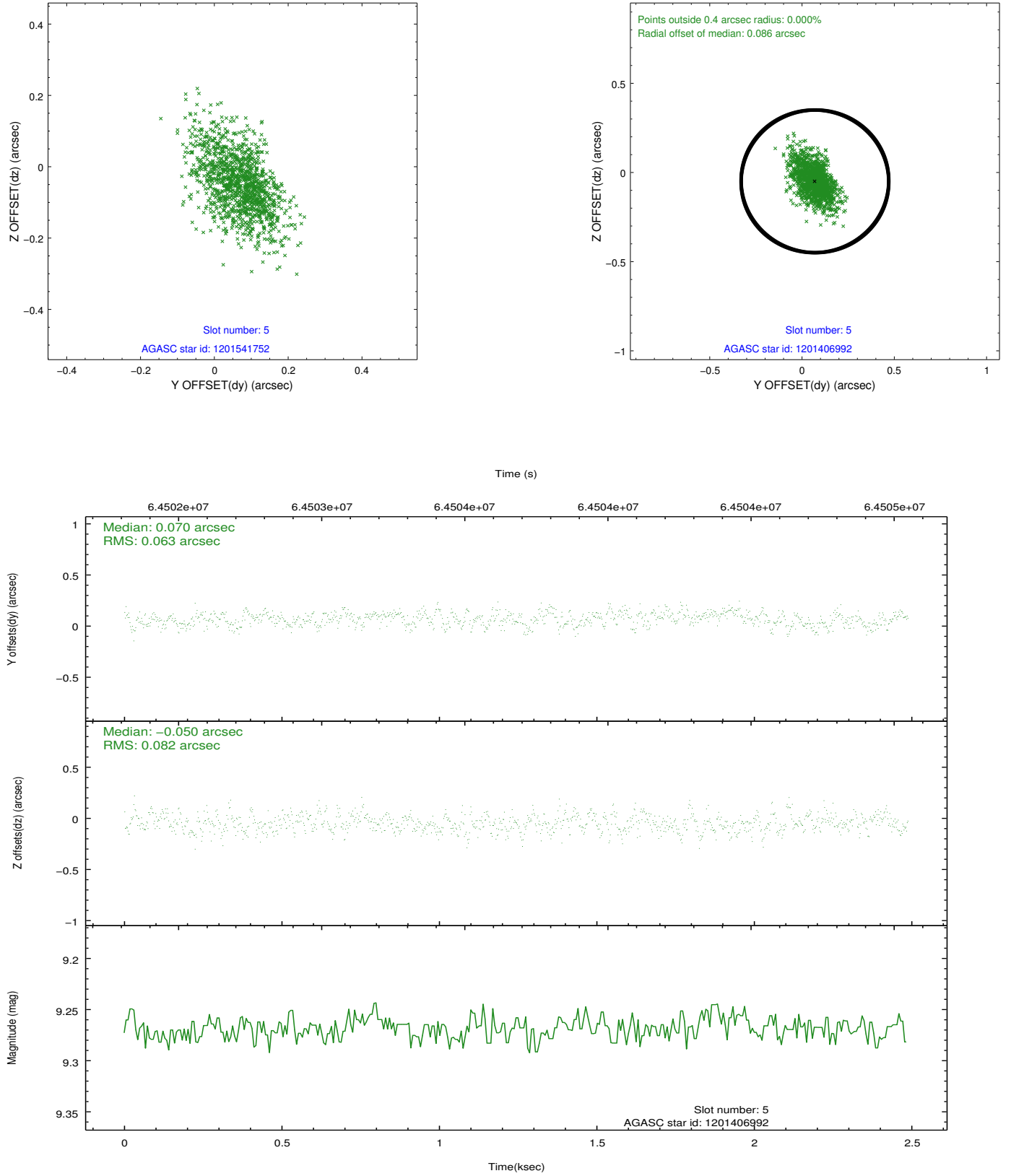
2.4.1 Slot 3



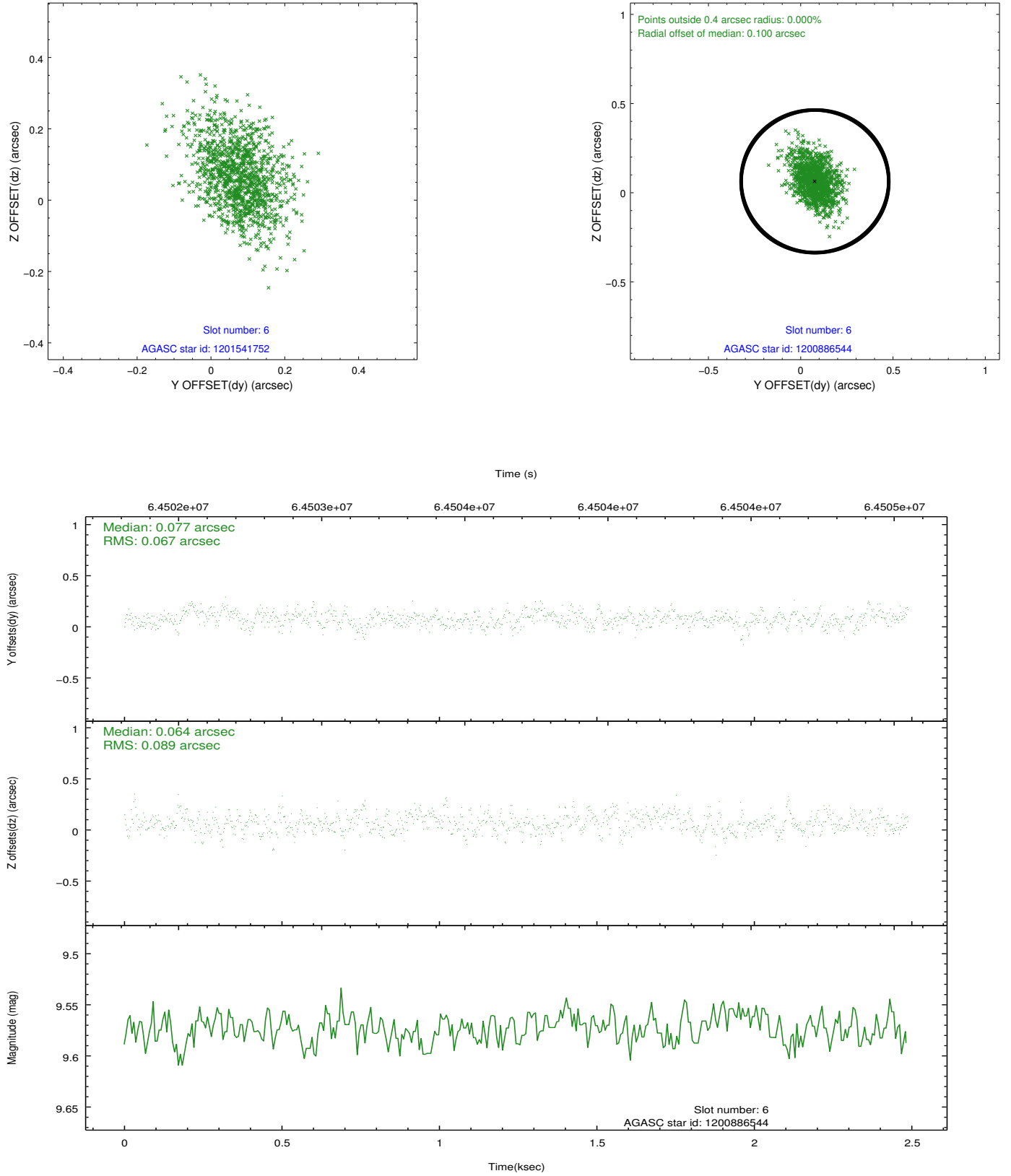
2.4.2 Slot 4



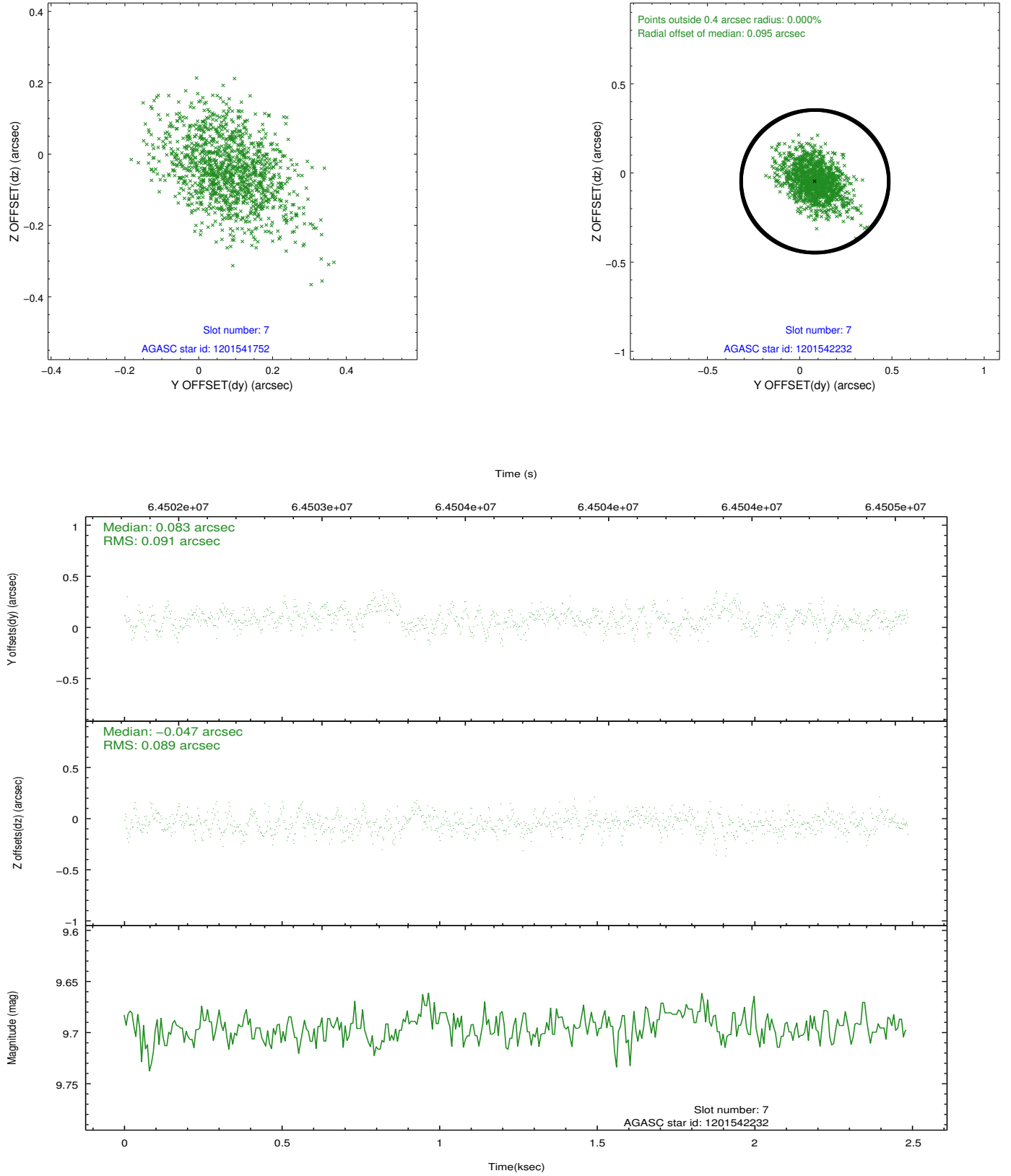
2.4.3 Slot 5



2.4.4 Slot 6

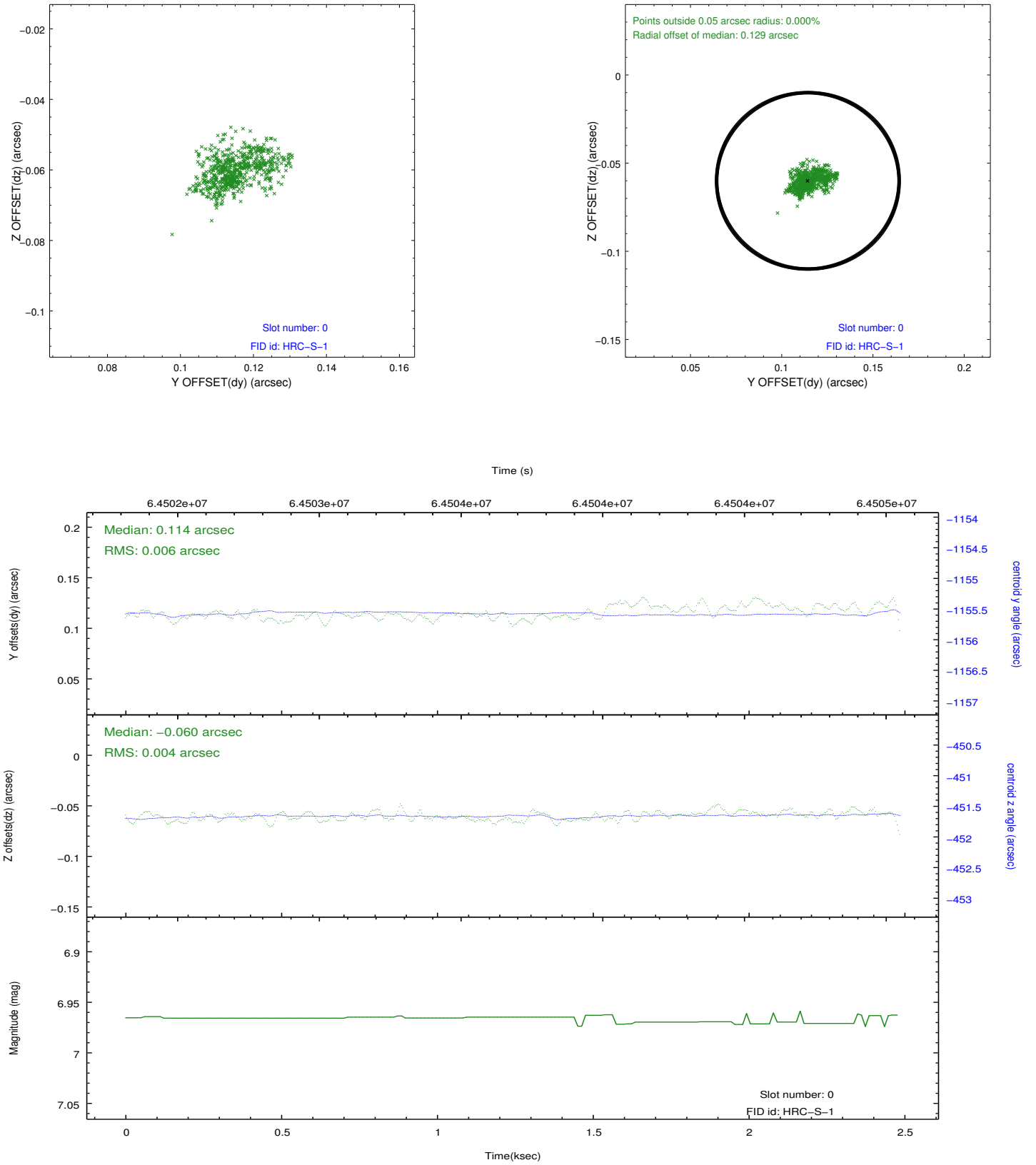


2.4.5 Slot 7

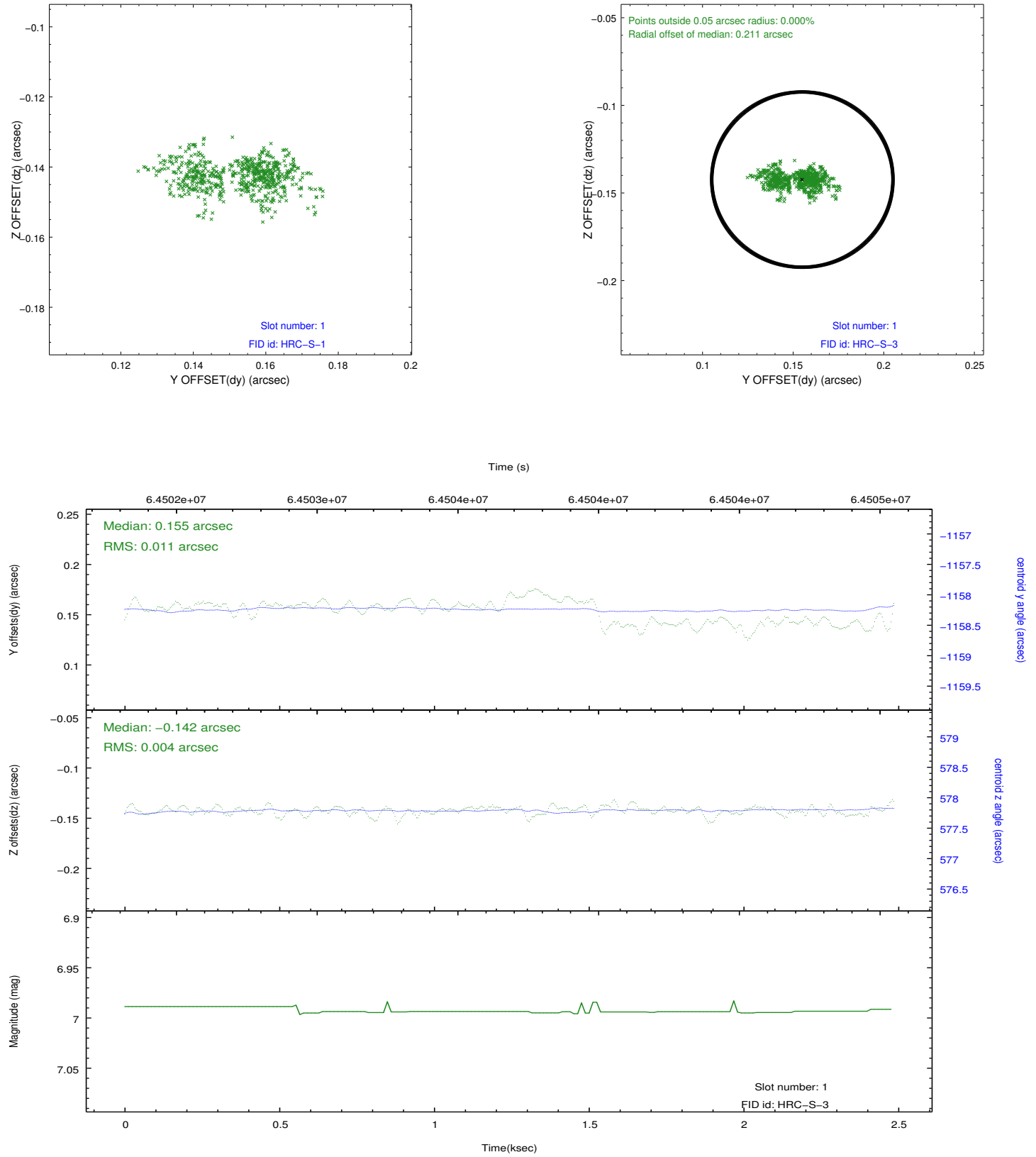


2.5 FID Slots

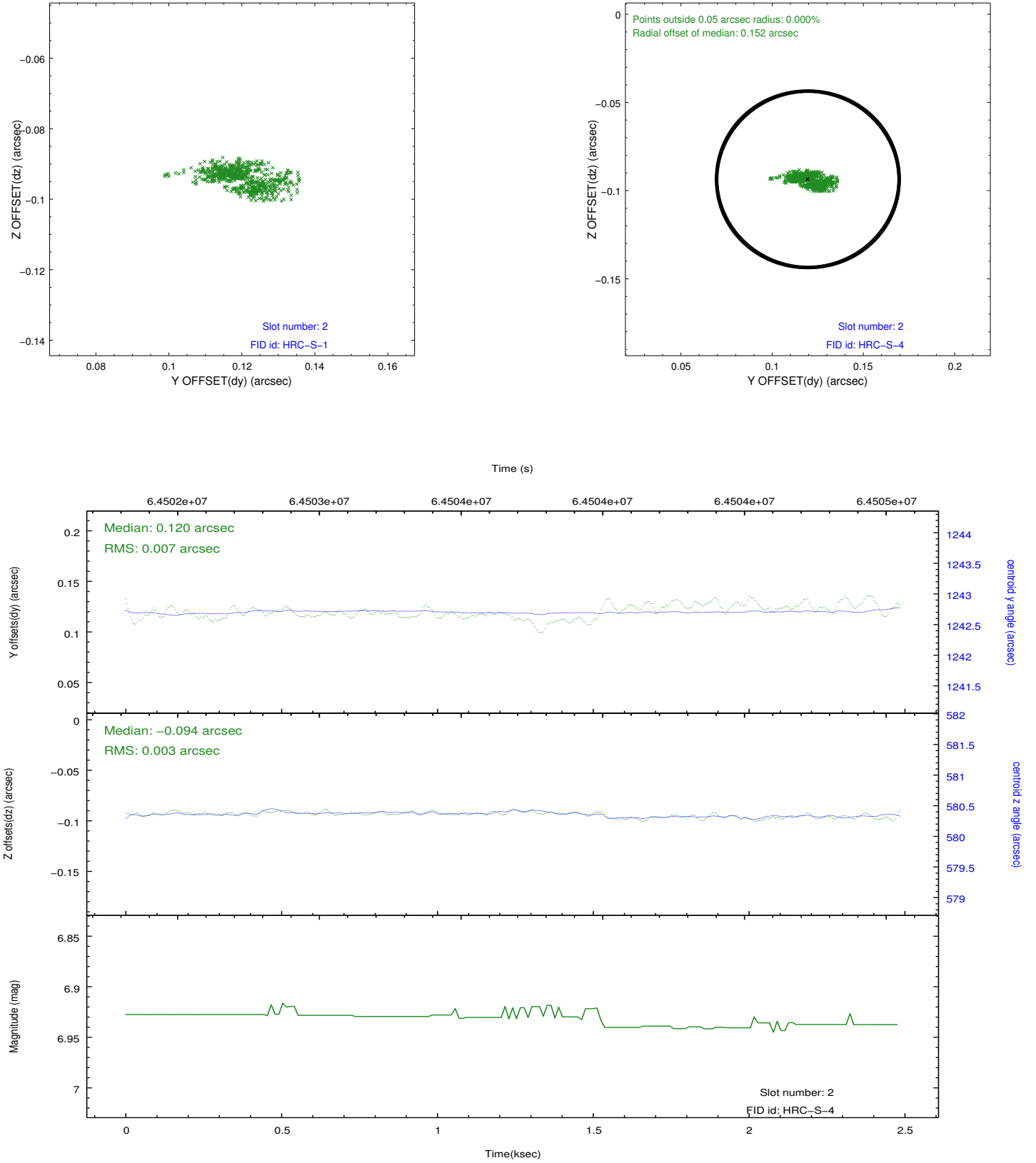
2.5.1 Slot 0



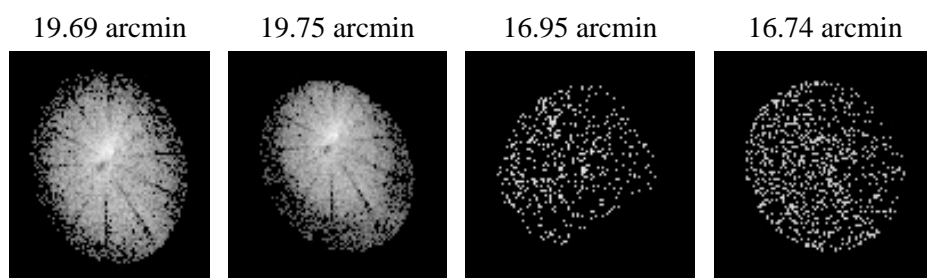
2.5.2 Slot 1



2.5.3 Slot 2



3 Point Sources



A Summary

A.1 Status

V&V Scientist	Joy Nichols
V&V Date (YYYY-MM-DD)	2009.12.03
V&V Edition	1
V&V Disposition and Status	OK
V&V Charge Time	1.858

A.2 Comments

Charge time for this ObsId remains at original value of 1.858 ks,
although
with the current processing the charge time would have been 2.202 ksec.
Target is very off-axis.