

V&V Reference Report

L2 ASCDS Version : 8.1.2

Observation 1154 - L2 Version 6

Chandra X-Ray Center

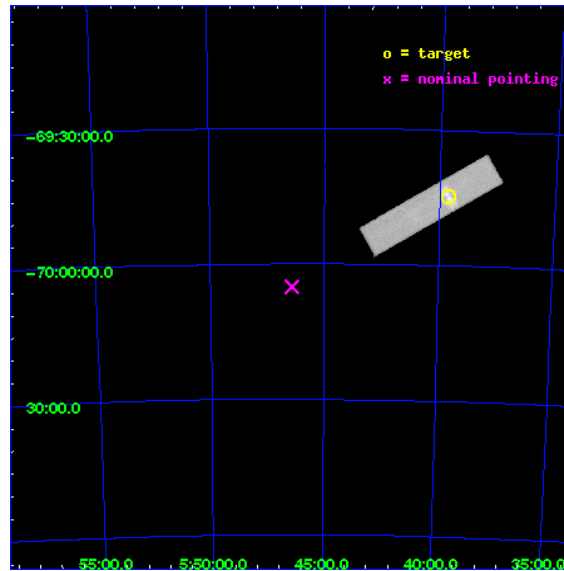
L2 Processing Date : Dec 2 2009

Contents

1	Front	2
2	OBI	3
2.1	OBI	3
2.1.1	Images	3
2.1.2	Parameters	4
2.1.3	Events	4
2.2	Compared Parameters	5
2.3	Aspect	6
2.4	Star Slots	9
2.4.1	Slot 3	9
2.4.2	Slot 4	10
2.4.3	Slot 5	11
2.4.4	Slot 6	12
2.4.5	Slot 7	13
2.5	FID Slots	14
2.5.1	Slot 0	14
2.5.2	Slot 1	15
2.5.3	Slot 2	16
3	Point Sources	17
A	Summary	18
A.1	Status	18
A.2	Comments	18

1 Front

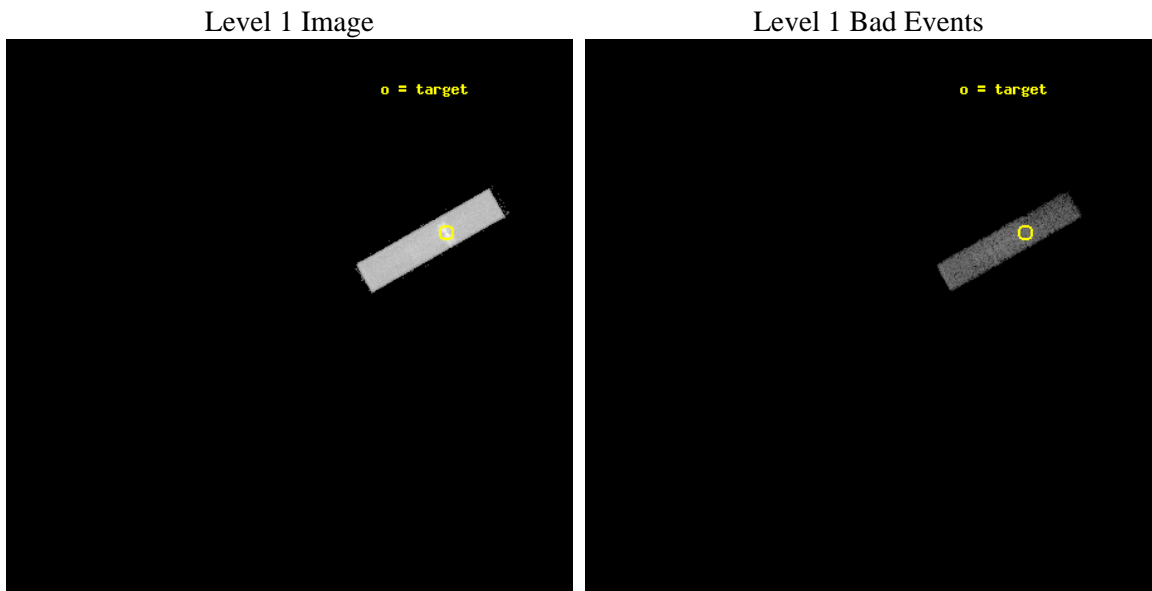
seq_num	480104	Sequence number
obs_id	1154	Observation id
title	 	Proposal title
observer	Dr. CXC Calibration	Principal investigator
object	LMC X-1	Source name
ra_targ	84.914583	Observer's specified target RA
dec_targ	-69.743611	Observer's specified target Dec
ra_nom	86.601874541187	Nominal RA
dec_nom	-70.084532730292	Nominal Dec
roll_nom	330.4427302507	Nominal Roll
revision	6	Processing version of data
ontime	2202.9813300371	[s]
livetime	2190.1798894971	Ontime multiplied by DTCOR
l2events	88133	Number of level 2 events



2 OBI

2.1 OBI

2.1.1 Images



2.1.2 Parameters

obi_num	1	Obi number	sched_exp_time	2000.000000	Scheduled observation exposure time
ascdsver	8.1.2	Processing system revision	ontime	2202.9813300371	[s]
caldbver	4.1.4	 	l1events	122564	Number of level 1 events
date	2009-12-02T17:16:24	Date and time of file creation			
revision	5	Processing version of data			

2.1.3 Events

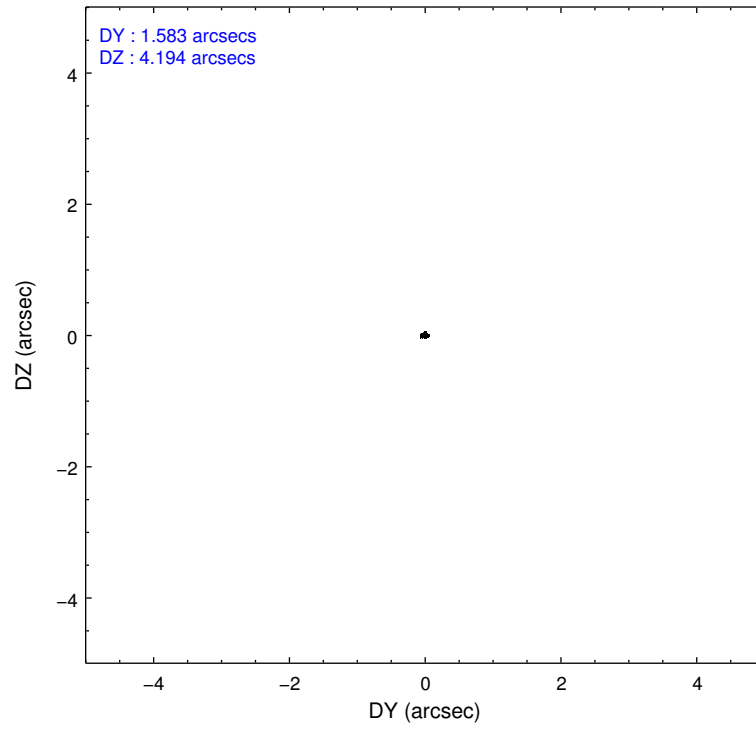
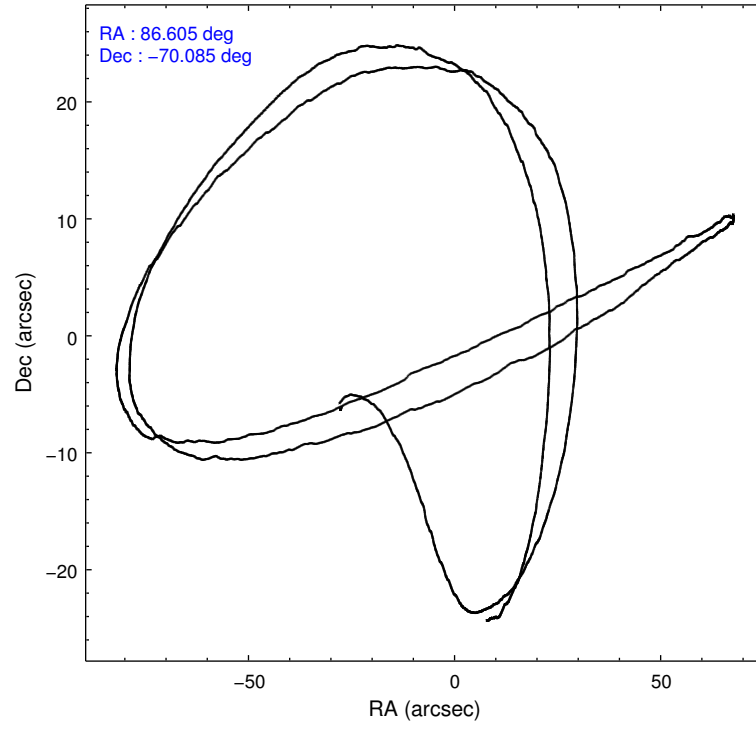
Level 1 Events

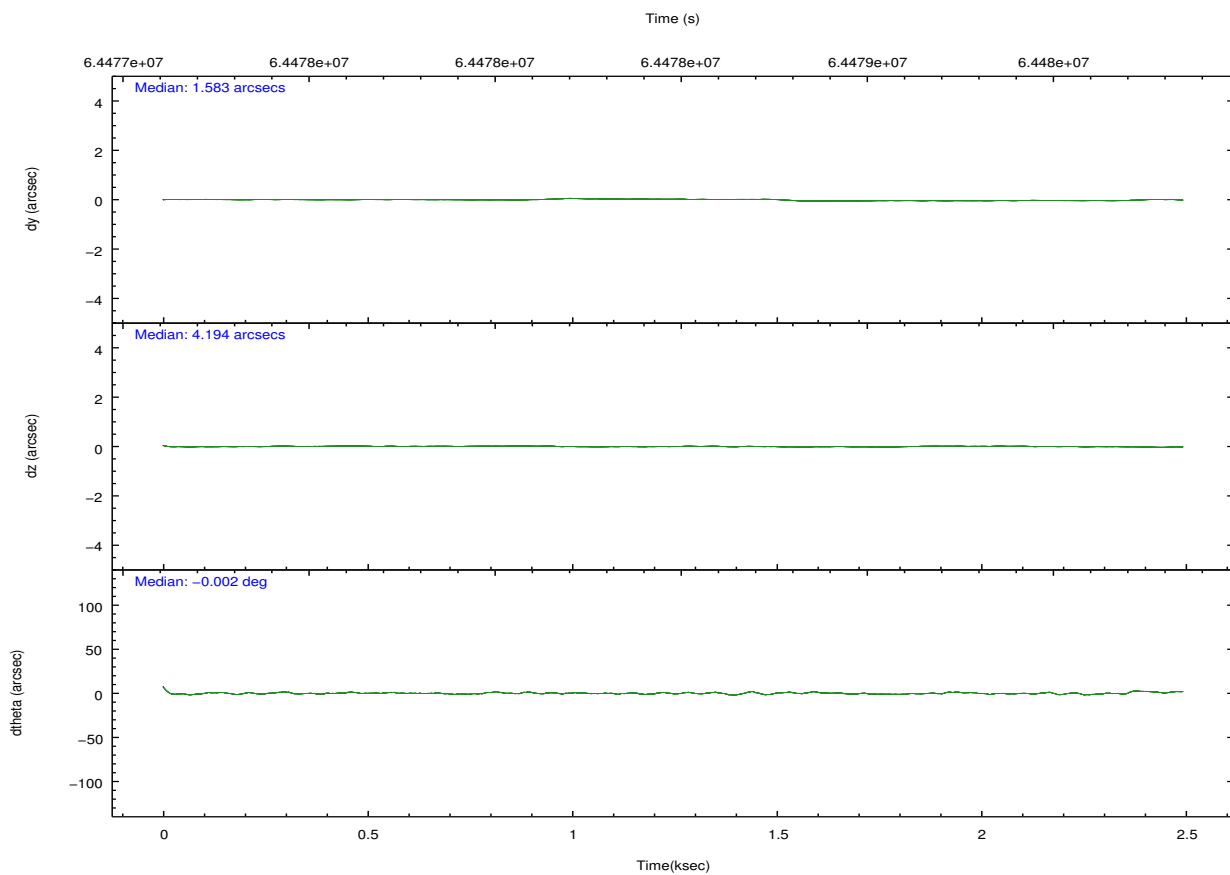
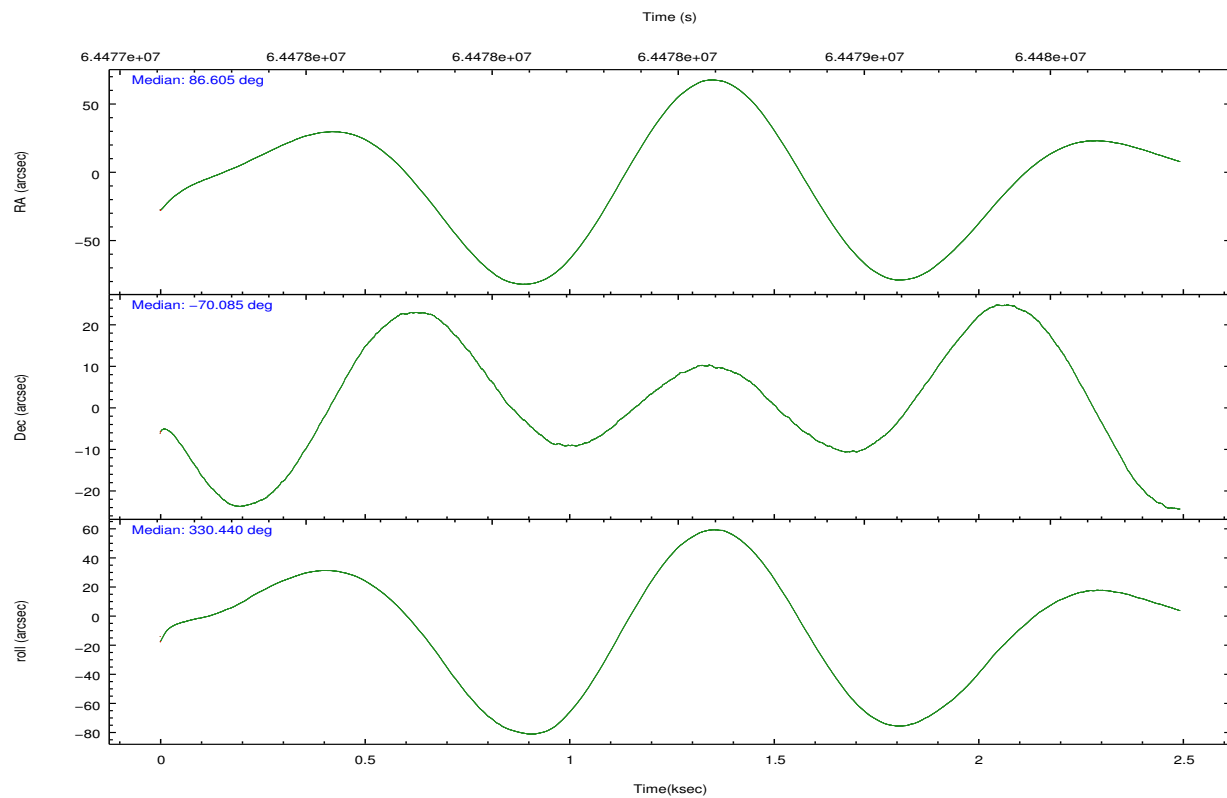
	segment 1	segment 2	segment 3
level 1 events	122512	52	0
rejected events	26217	7	0
rejected %	21%	13%	0%

2.2 Compared Parameters

Parameter	Planned	Actual	Parameter	Planned	Actual
Instrument	HRC	HRC	Obspar format version number	6	6
Detector	HRC-S	HRC-S	Obspar file type	PREDICTED	ACTUAL
Grating	NONE	NONE	Obspar update status	NONE	UPDATED
Data mode	OBSERVING	OBSERVING			
Observation mode	POINTING	POINTING			
Pointing RA	86.516327	86.60187454118716			
Pointing Dec	-70.085292	-70.08453273029234			
Pointing Roll	330.294921	330.4427302506985			
SIM focus pos (mm)	-1.528523	-1.428180813131781			
SIM defocus (mm)	0.004813771043328752	0.1051558262725154			
SIM translation stage pos (mm)	250.455976	250.466033080201			
SIM translation stage offset (mm)	0	-0.01005468664627074			
Observation start time	64477724.184000	64476579.03637			
Observation start date	2000-01-17T06:27:40	2000-01-17T06:09:39			
Observation end time	64479724.184000	64479858.523989			
Observation end date	2000-01-17T07:01:00	2000-01-17T07:04:18			

2.3 Aspect



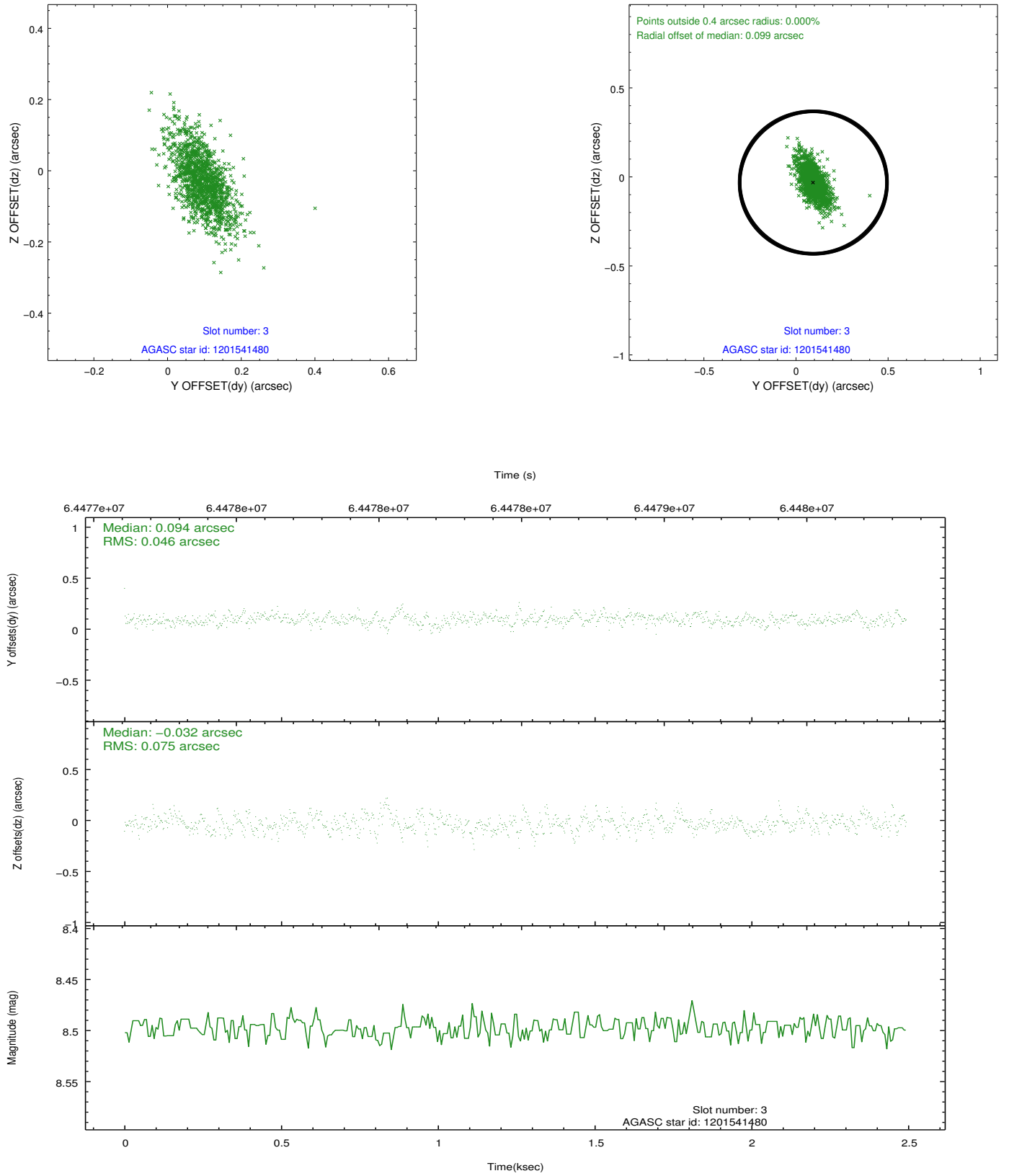


Slot Statistics

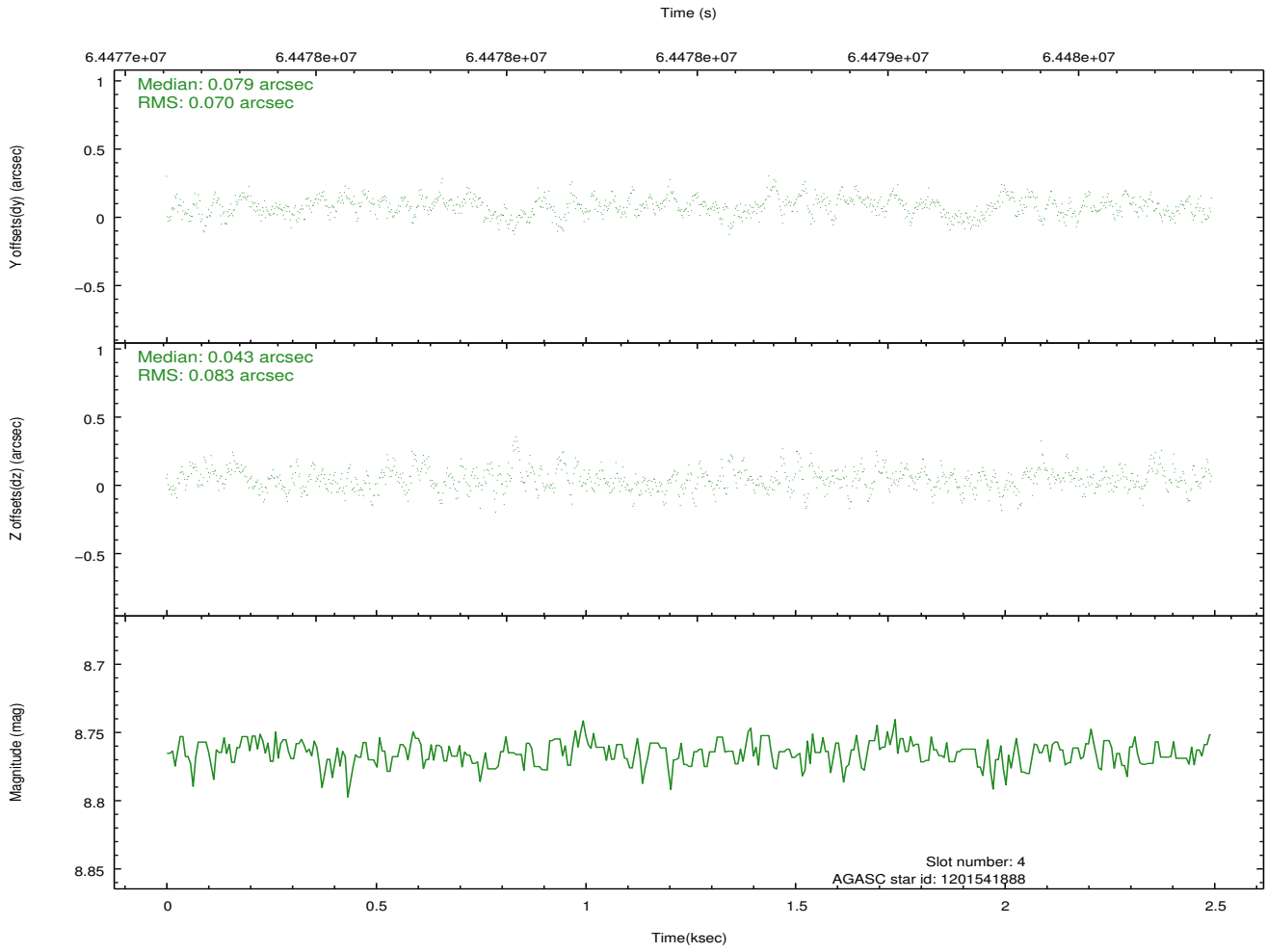
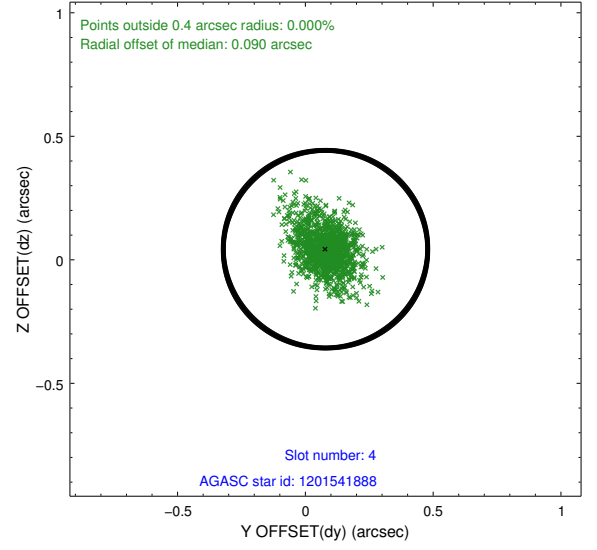
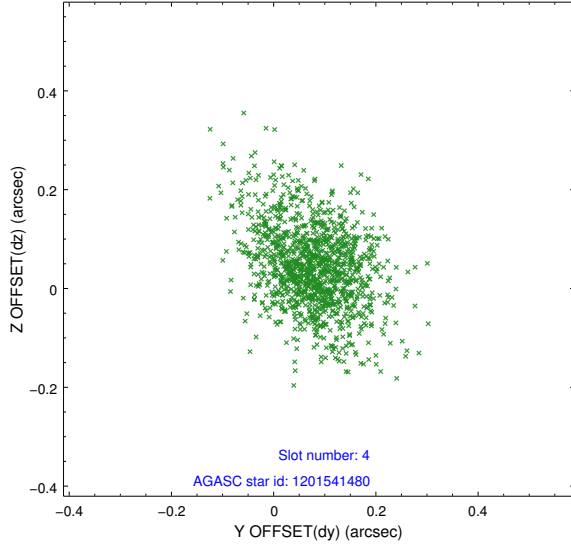
slot	status	id	mag	n_pts	med_dy	med_dz	dr1	dr2	ra	dec	mean_y	mean_z
0	FID	HRC-S-1	6.97	609	0.126	-0.101	0.006	0.010	0.000000	0.000000	-1155.60	-452.61
1	FID	HRC-S-3	7.00	609	0.157	-0.097	0.007	0.012	0.000000	0.000000	-1160.17	576.18
2	FID	HRC-S-4	6.94	609	0.104	-0.099	0.005	0.009	0.000000	0.000000	1240.75	580.38
3	GUIDE	1201541480	8.50	1217	0.094	-0.032	0.087	0.162	87.080483	-70.345903	1058.43	-478.88
4	GUIDE	1201541888	8.76	1216	0.079	0.043	0.111	0.197	87.859702	-70.479385	2114.87	-446.99
5	GUIDE	1201542232	9.68	1217	-0.132	0.076	0.131	0.225	84.533398	-70.465667	-1374.80	-2406.03
6	GUIDE	1201017424	10.18	1213	-0.026	-0.087	0.187	0.307	85.854985	-69.248506	-2226.20	2192.58
7	GUIDE	1201540376	9.25	1216	-0.014	-0.007	0.115	0.203	87.370568	-69.787305	391.48	1453.85

2.4 Star Slots

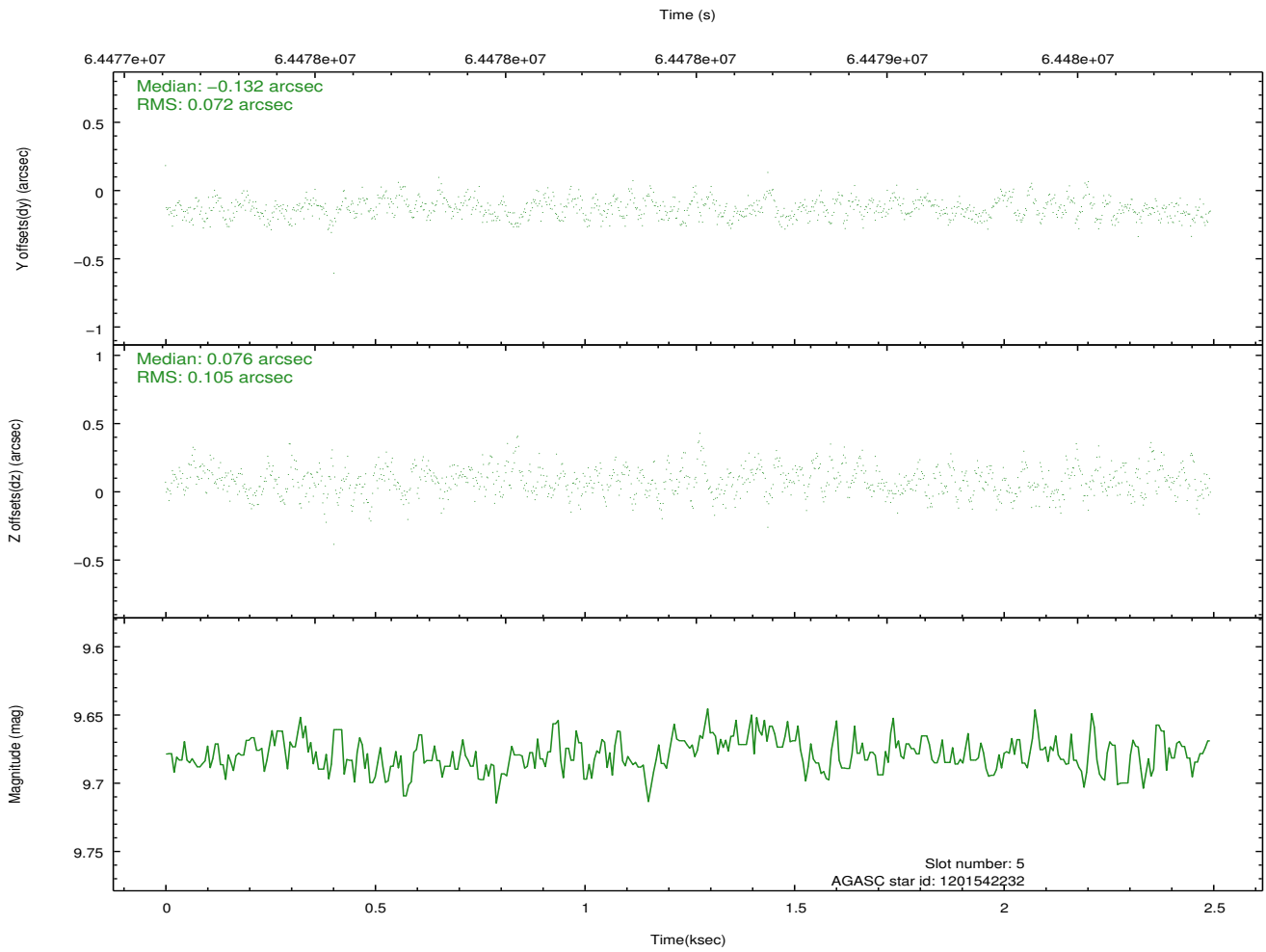
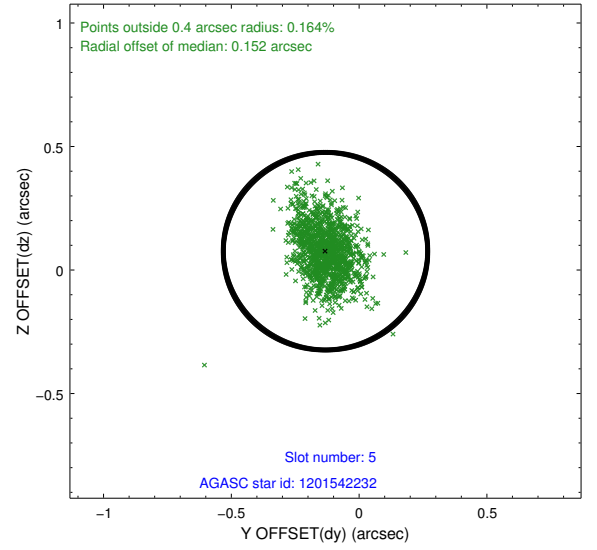
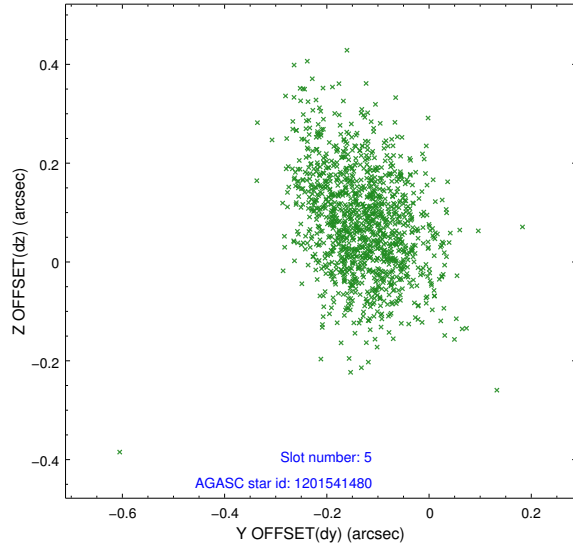
2.4.1 Slot 3



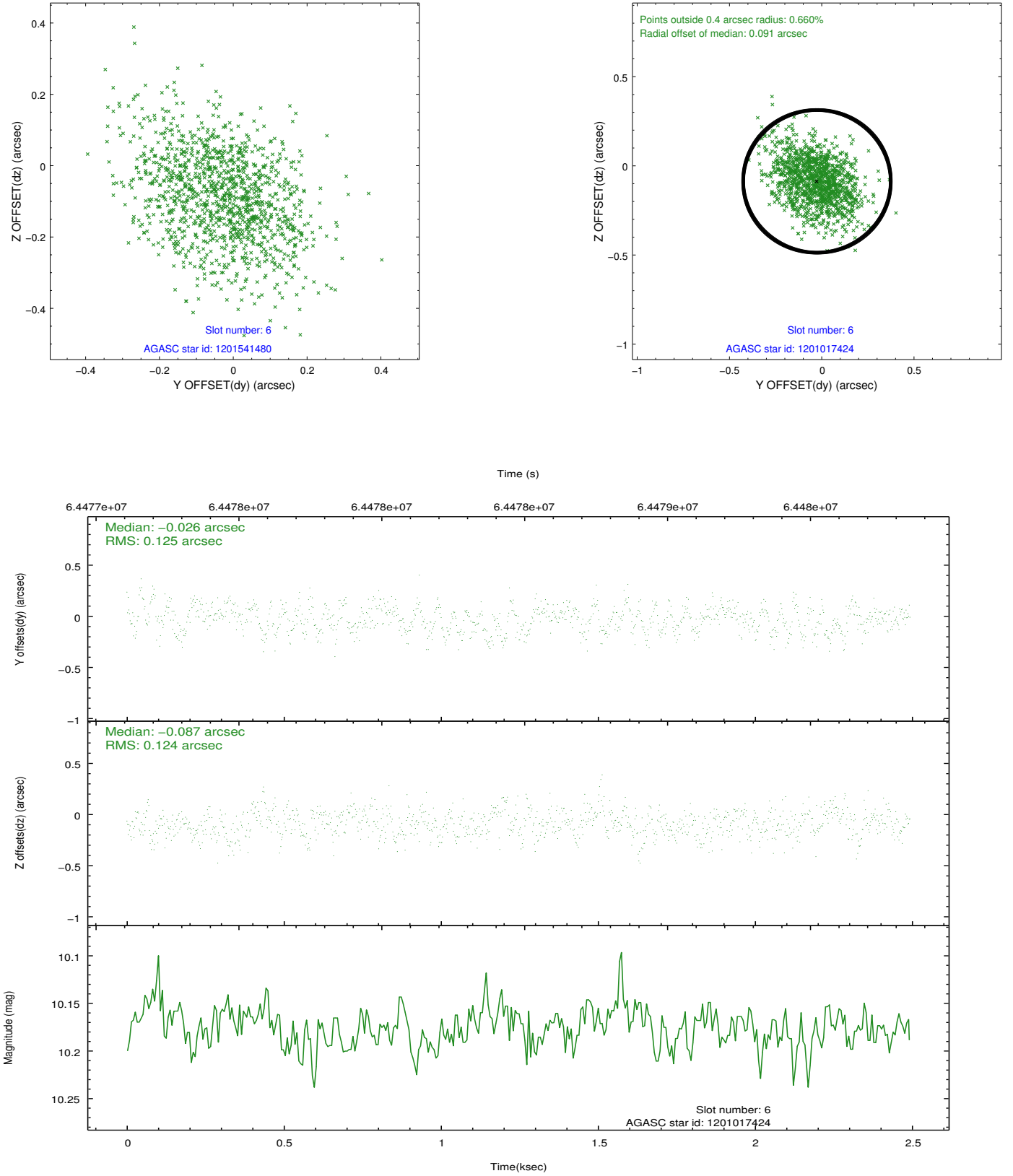
2.4.2 Slot 4



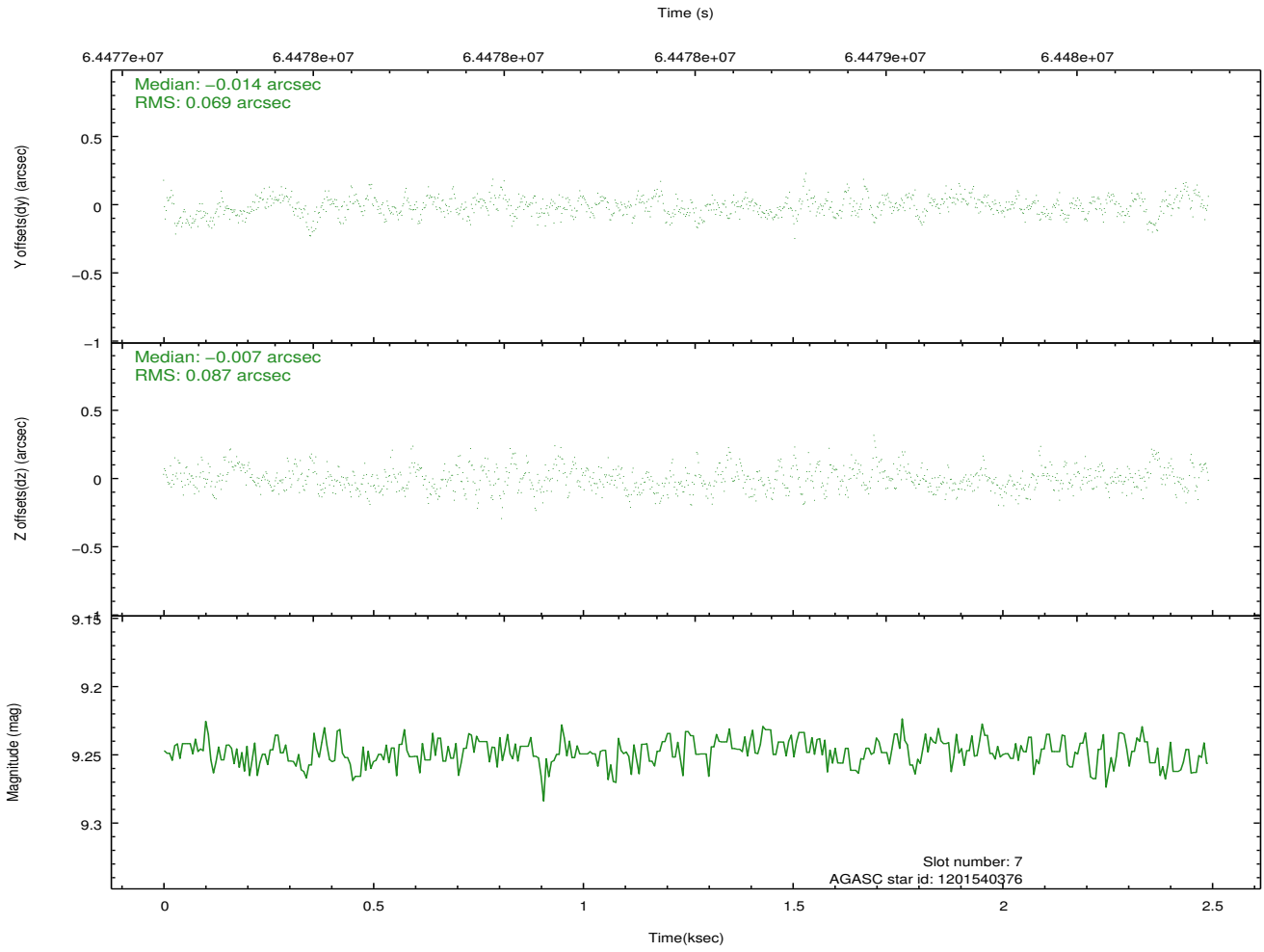
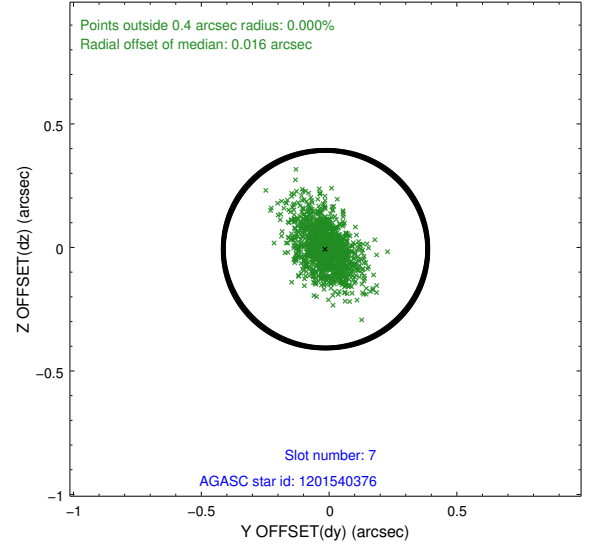
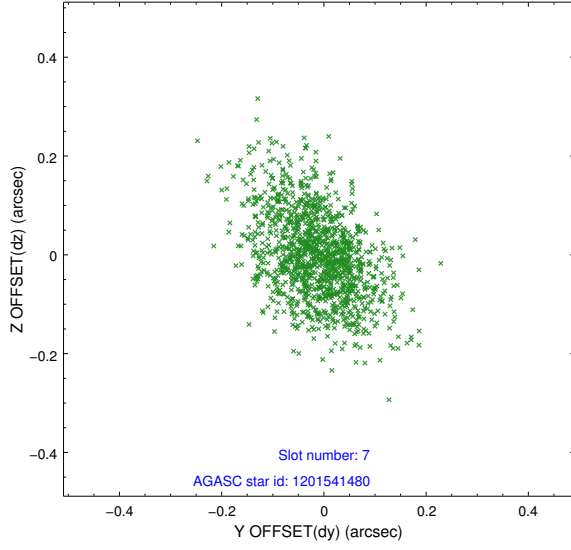
2.4.3 Slot 5



2.4.4 Slot 6

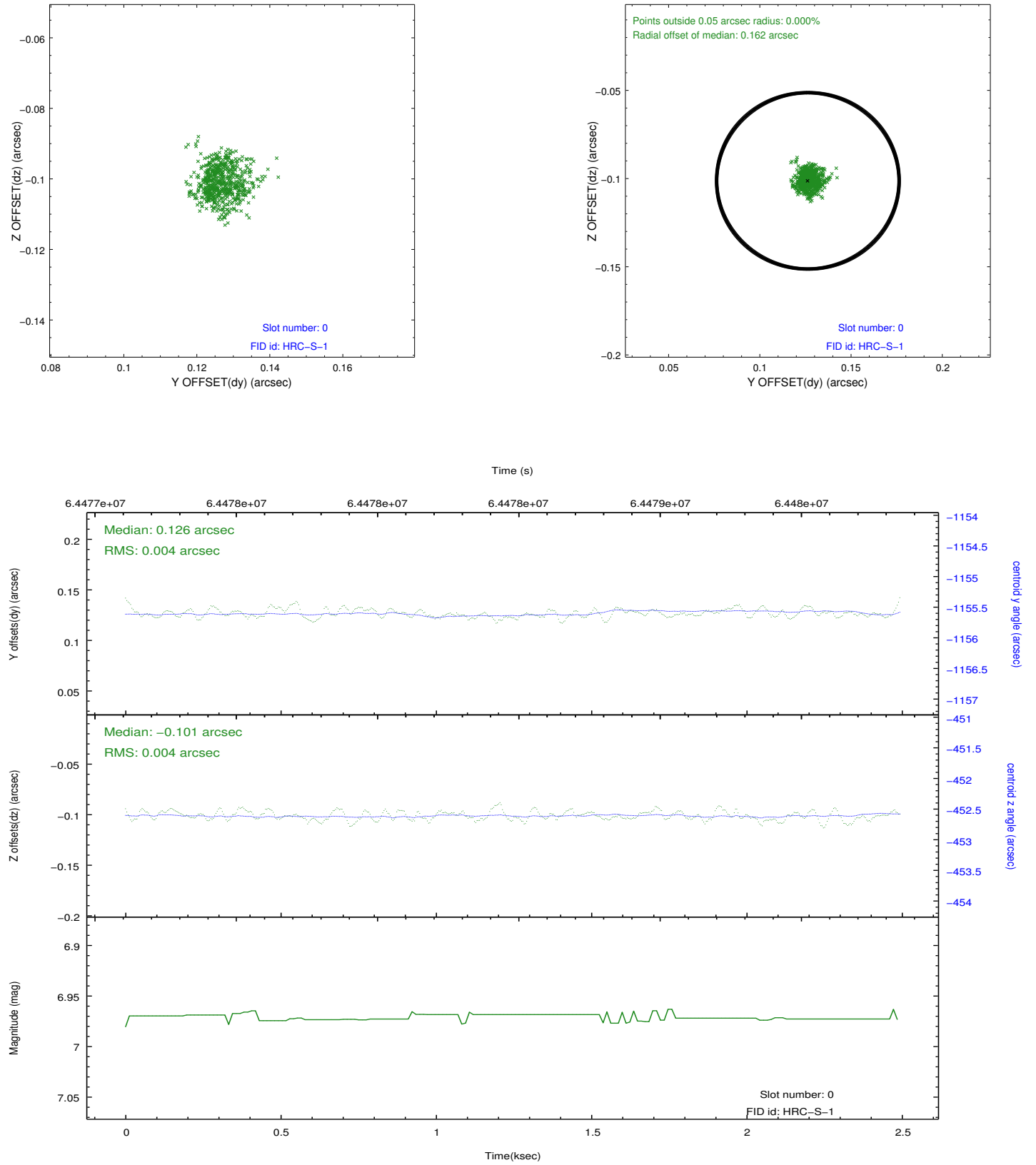


2.4.5 Slot 7

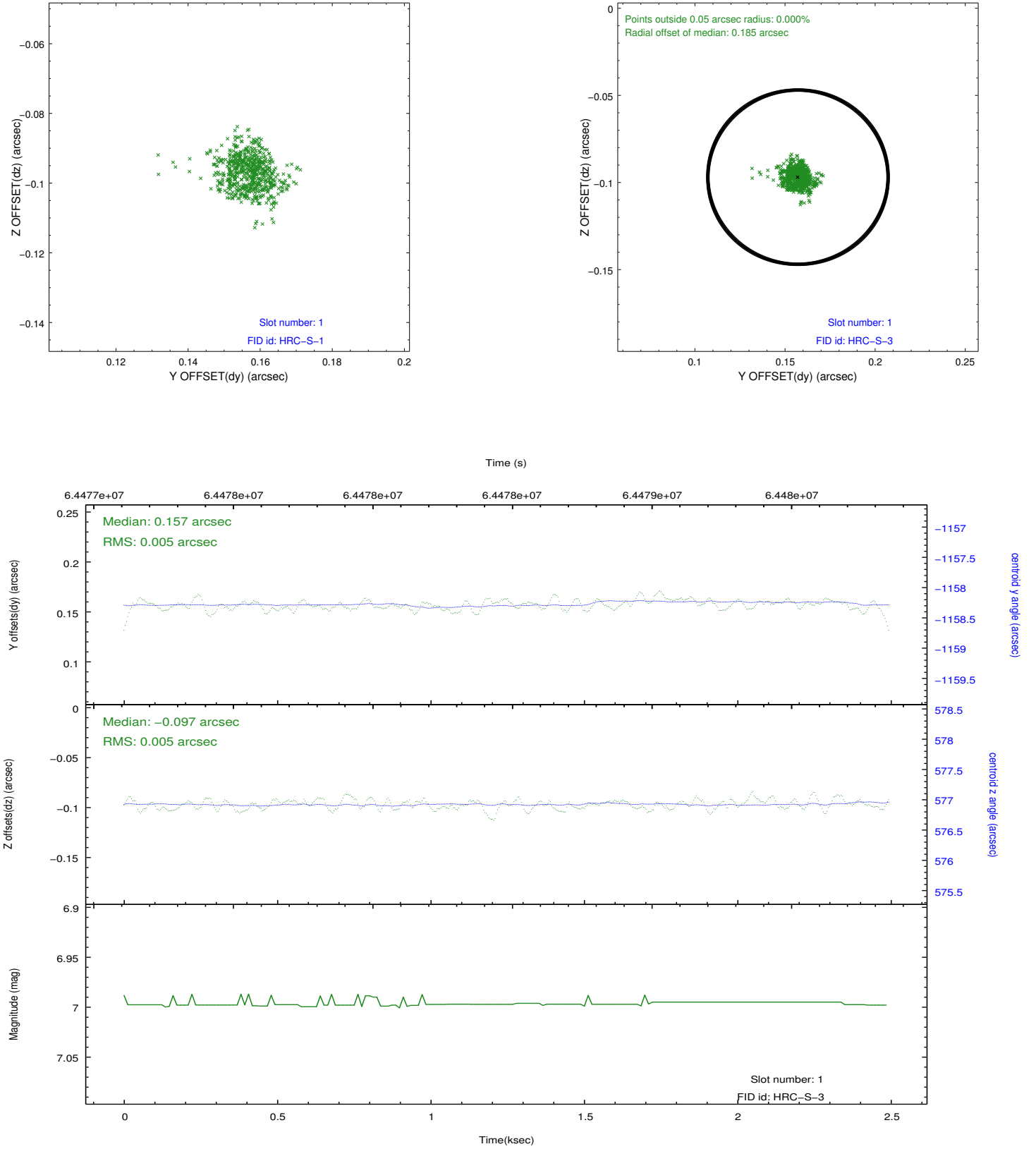


2.5 FID Slots

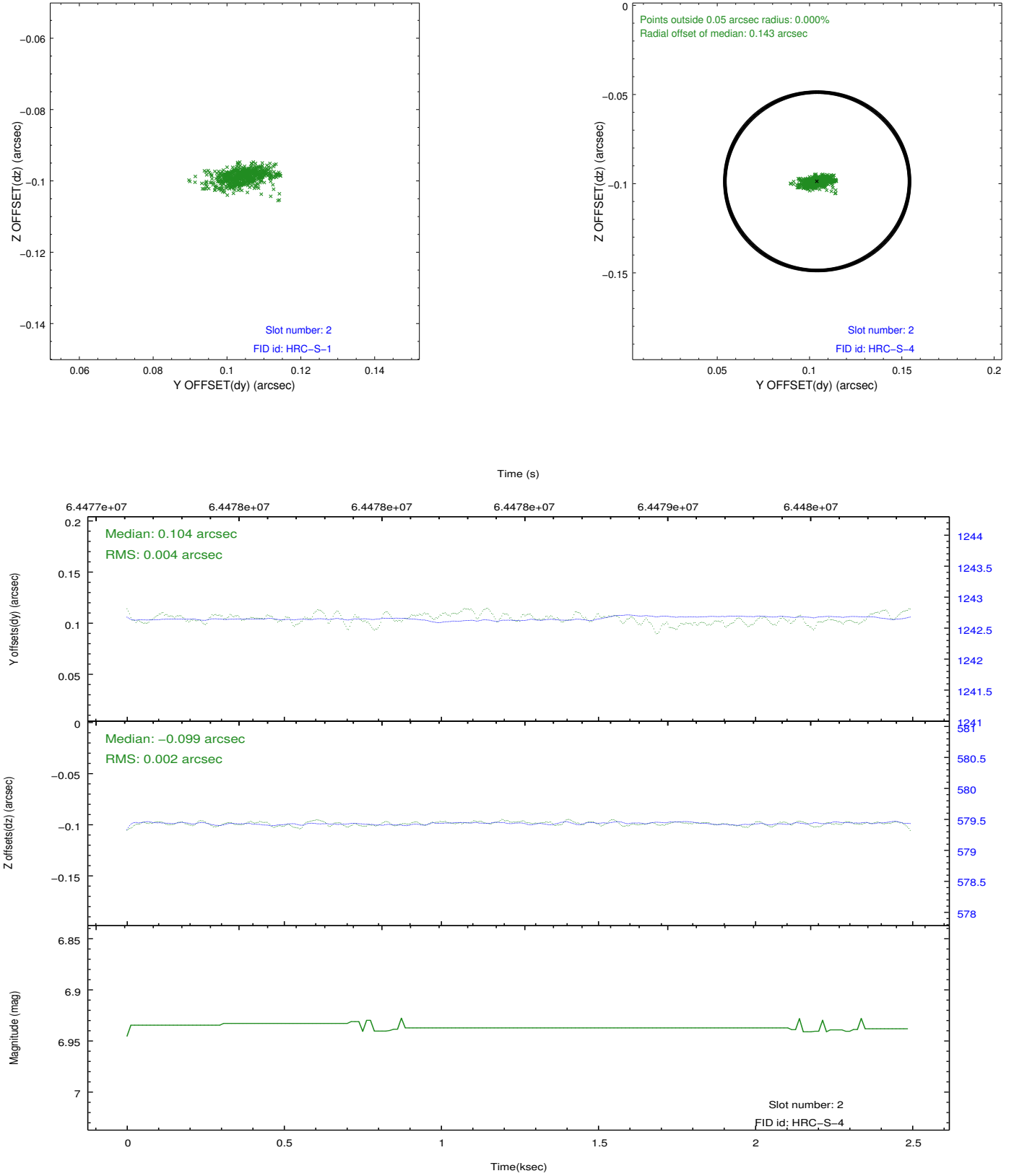
2.5.1 Slot 0



2.5.2 Slot 1



2.5.3 Slot 2



3 Point Sources

A Summary

A.1 Status

V&V Scientist	Joy Nichols
V&V Date (YYYY-MM-DD)	2009.12.03
V&V Edition	1
V&V Disposition and Status	OK
V&V Charge Time	1.892

A.2 Comments

Charge time for this ObsId remains at original value of 1.892 ks,
although
with the current processing the charge time would have been 2.203 ksec.
Target is far off-axis.