

V&V Reference Report

L2 ASCDS Version : 8.2.1

Observation 51 - L2 Version 3

Chandra X-Ray Center

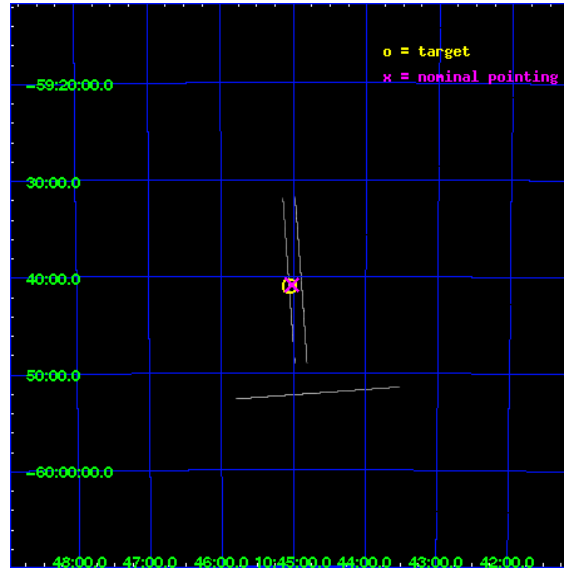
L2 Processing Date : Jan 13 2010

Contents

1	Front	2
2	OBI	3
2.1	OBI	3
2.1.1	Images	3
2.1.2	Bias	3
2.1.3	Parameters	4
2.1.4	Events	4
2.2	Compared Parameters	5
2.3	Aspect	6
2.4	Star Slots	9
2.4.1	Slot 3	9
2.4.2	Slot 4	10
2.4.3	Slot 5	11
2.4.4	Slot 6	12
2.4.5	Slot 7	13
2.5	FID Slots	14
2.5.1	Slot 0	14
2.5.2	Slot 1	15
2.5.3	Slot 2	16
A	Summary	17
A.1	Status	17
A.2	Comments	17

1 Front

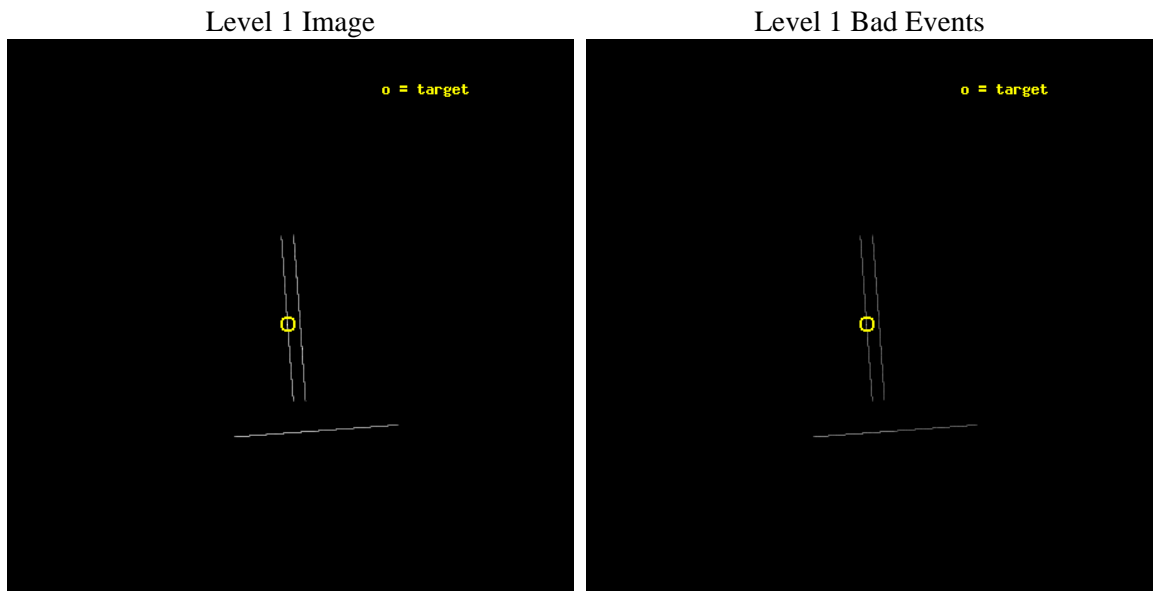
seq_num	290020	Sequence number
obs_id	51	Observation id
title	DEMONSTRATION IMAGE OF ETA CARINAE	Proposal title
observer	Dr. CXC Calibration	Principal investigator
object	ETA CARINAE	Source name
ra_targ	161.265	Observer's specified target RA
dec_targ	-59.684167	Observer's specified target Dec
ra_nom	161.25525646389	Nominal RA
dec_nom	-59.681532038612	Nominal Dec
roll_nom	175.83245811133	Nominal Roll
revision	3	Processing version of data
ontime	11148.25	Sum of GTIs [s]
livetime	11104.702148438	Livetime [s]
ontime0	11148.25	Sum of GTIs [s]
ontime1	11148.25	Sum of GTIs [s]
ontime2	11148.25	Sum of GTIs [s]
ontime3	11148.25	Sum of GTIs [s]
ontime6	11148.25	Sum of GTIs [s]
ontime7	11148.25	Sum of GTIs [s]
l2events	208774	Number of level 2 events



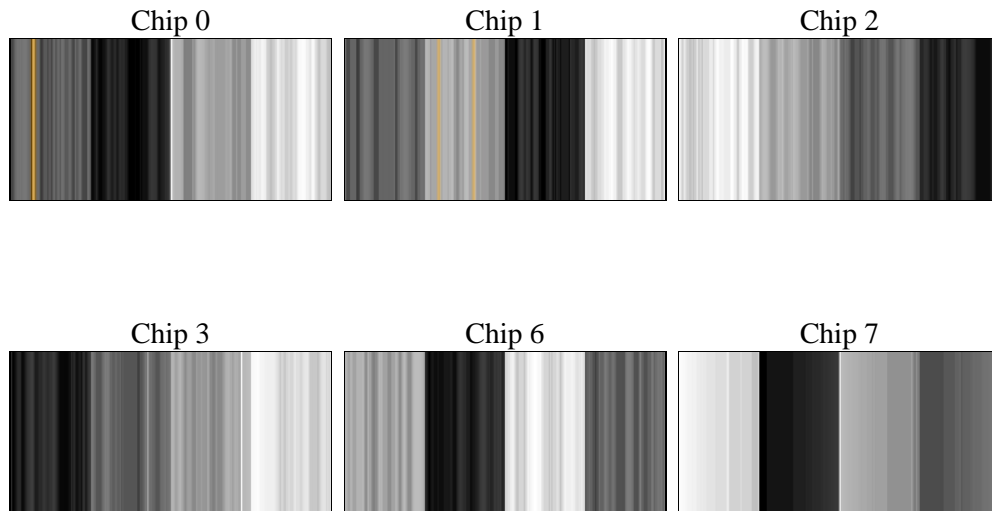
2 OBI

2.1 OBI

2.1.1 Images



2.1.2 Bias



2.1.3 Parameters

obi_num	0	Obi number	sched_exp_time	11000.000000	Scheduled observation exposure time
ascdsver	8.2.1	ASCDS version number	ontime	11148.25	Sum of GTIs [s]
caldsver	4.1.5	 	ontime0	11148.25	Sum of GTIs [s]
date	2010-01-13T07:06:04	Date and time of file creation	ontime1	11148.25	Sum of GTIs [s]
revision	4	Processing version of data	ontime2	11148.25	Sum of GTIs [s]
			ontime3	11148.25	Sum of GTIs [s]
			ontime6	11148.25	Sum of GTIs [s]
			ontime7	11148.25	Sum of GTIs [s]
			l1events	236223	Number of level 1 events

2.1.4 Events

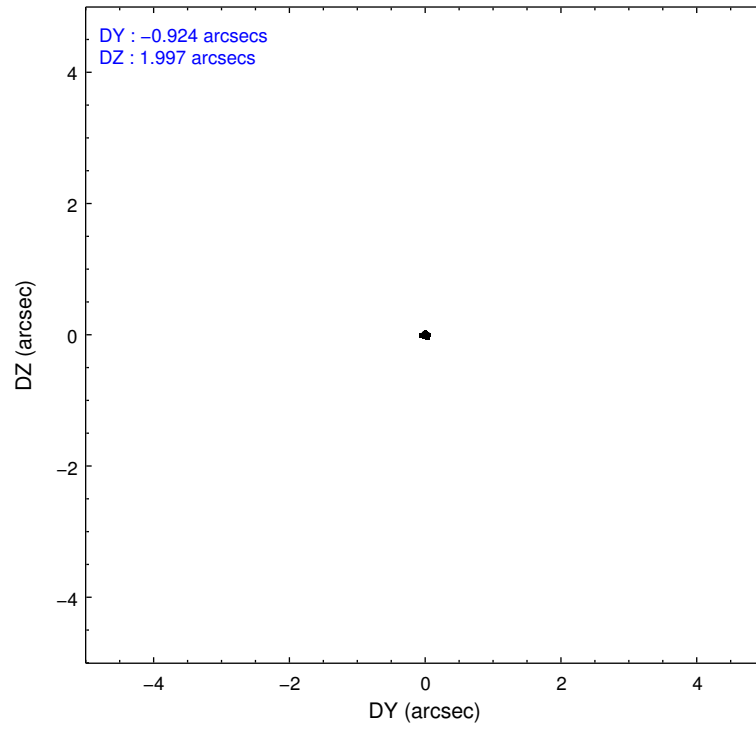
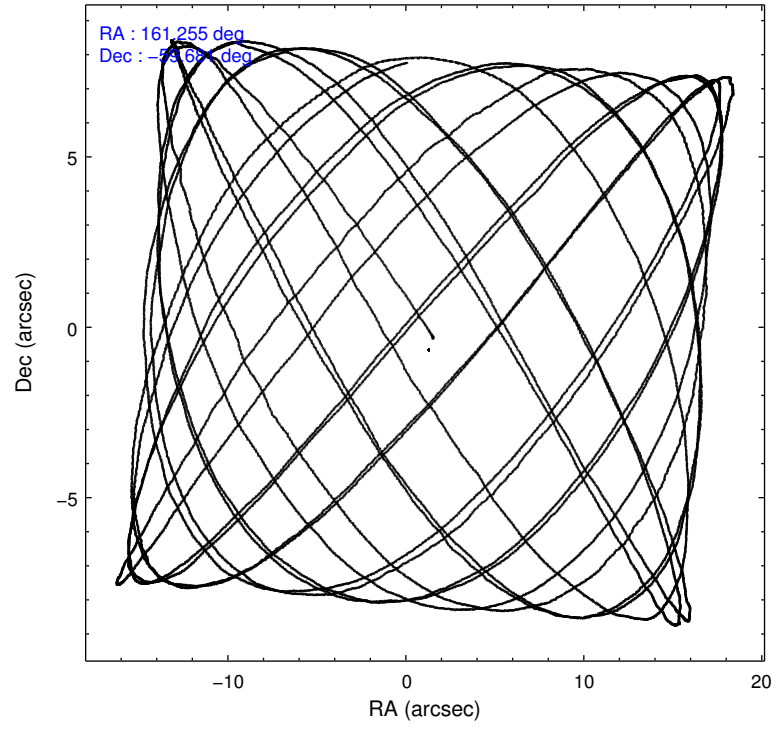
	ccd 0	ccd 1	ccd 2	ccd 3	ccd 6	ccd 7
level 1 events	31705	20324	35003	58375	30344	60472
rejected events	2553	2450	2135	2799	2463	6426
rejected %	8%	12%	6%	4%	8%	10%

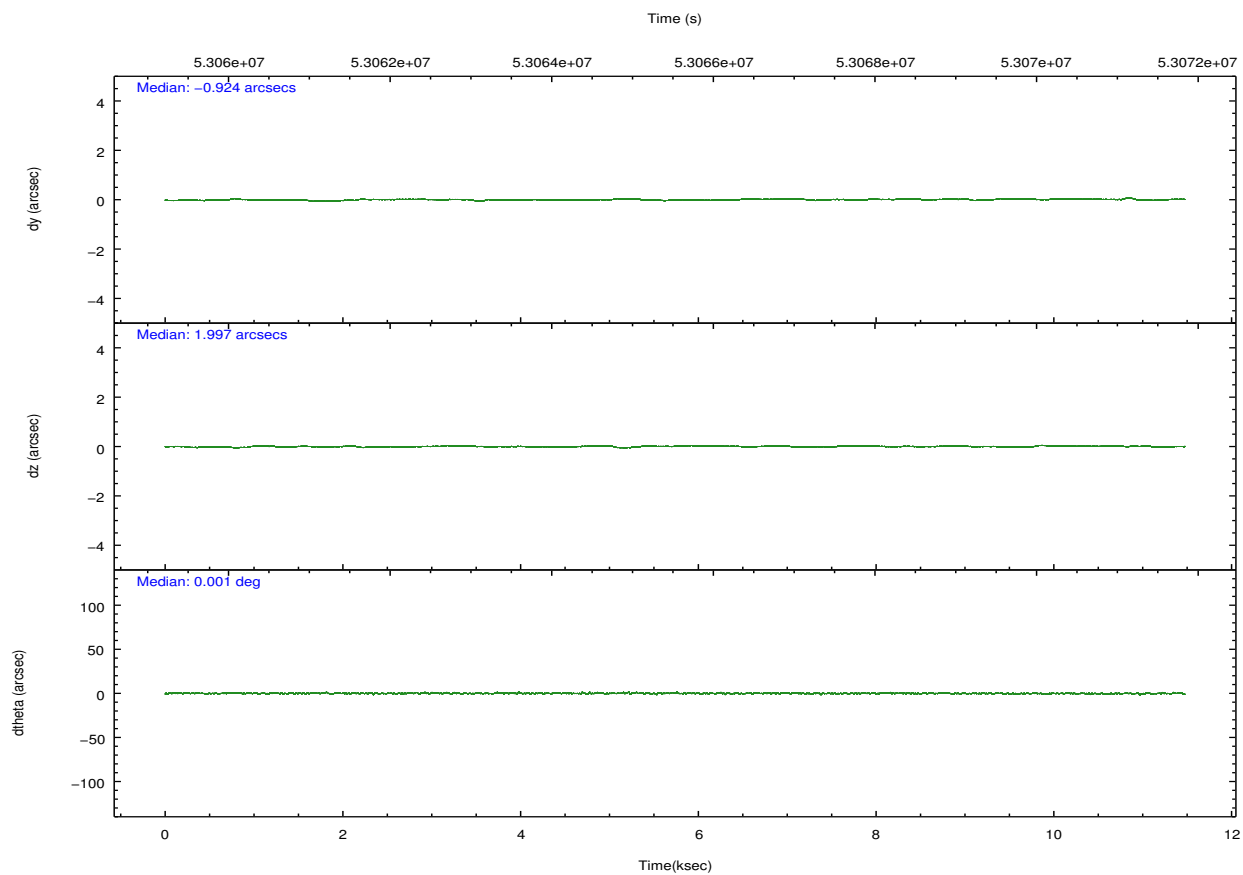
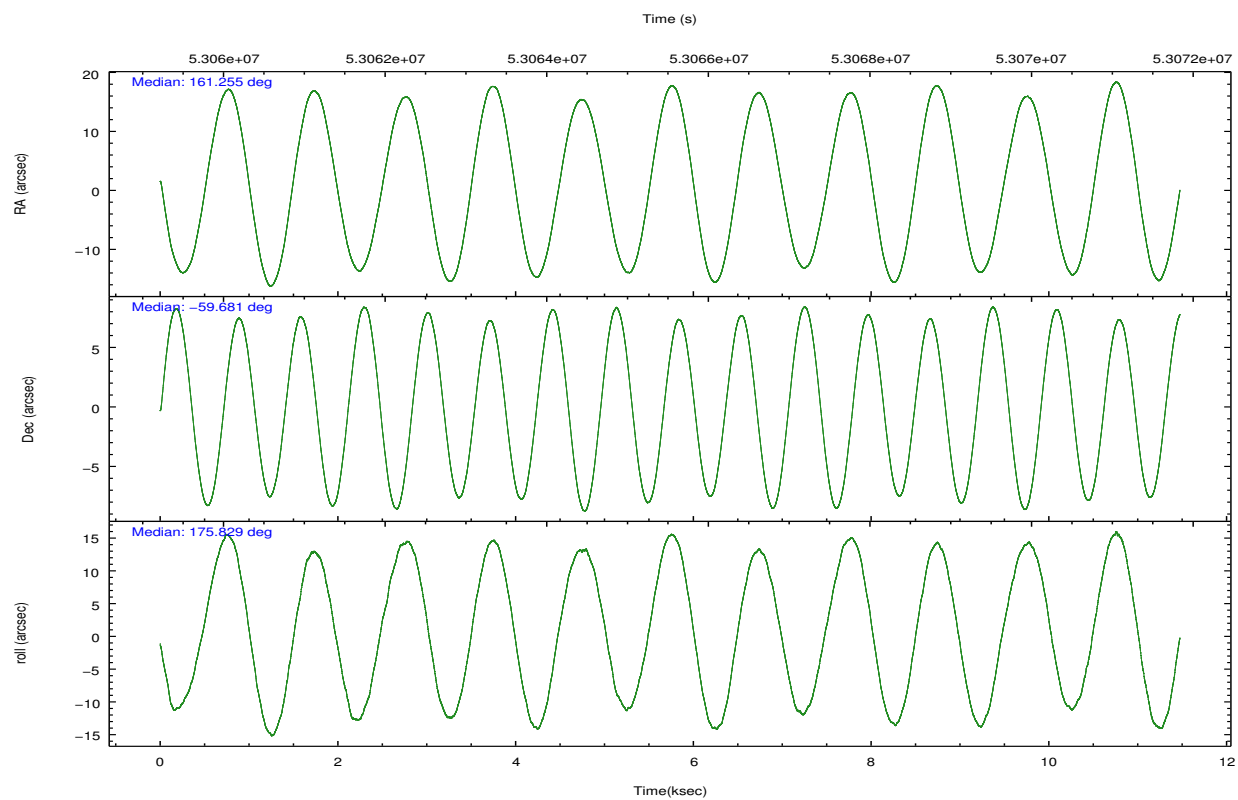
	ccd 0	ccd 1	ccd 2	ccd 3	ccd 6	ccd 7
grade 0 events	16310	7997	19966	24923	14632	10359
	51%	39%	57%	42%	48%	17%
grade 1 events	137	79	119	159	66	108
	0%	0%	0%	0%	0%	0%
grade 2 events	4331	3203	5210	18417	5194	12071
	13%	15%	14%	31%	17%	19%
grade 3 events	3356	2382	2906	3930	3046	6500
	10%	11%	8%	6%	10%	10%
grade 4 events	3205	2325	2926	3522	2853	5888
	10%	11%	8%	6%	9%	9%
grade 5 events	2405	2369	2005	2626	2389	6295
	7%	11%	5%	4%	7%	10%
grade 6 events	1961	1969	1871	4798	2164	19251
	6%	9%	5%	8%	7%	31%
grade 7 events	0	0	0	0	0	0
	0%	0%	0%	0%	0%	0%

2.2 Compared Parameters

Parameter	Planned	Actual	Parameter	Planned	Actual
Instrument	ACIS	ACIS	Obspar format version number	6	6
Detector	ACIS-012367	ACIS-012367	Obspar file type	PREDICTED	ACTUAL
Grating	NONE	NONE	Obspar update status	NONE	UPDATED
Data mode	CC33_FAINT	CC33_FAINT	Number of optional ACIS chips dropped	0	0
Observation mode	POINTING	POINTING	On-chip summing requested	N	N
Pointing RA	161.305539	161.2552564638854	Subarray requested	NONE	NONE
Pointing Dec	-59.670023	-59.68153203861216	Alternating exposures requested	N	N
Pointing Roll	175.667175	175.8324581113297	Primary exposure time	0.000000	0
SIM focus pos (mm)	-0.782348	-0.7809083437167272			
SIM defocus (mm)	0	0.001439871863259334			
SIM translation stage pos (mm)	-233.592463	-233.5874344608287			
SIM translation stage offset (mm)	0	-0.005018542100998502			
Observation start time	53060264.184000	53059598.1813			
Observation start date	1999-09-07T02:56:40	1999-09-07T02:46:38			
Observation end time	53071264.184000	53071855.13174			
Observation end date	1999-09-07T06:00:00	1999-09-07T06:10:55			
Read mode	CONTINUOUS	CONTINUOUS			

2.3 Aspect



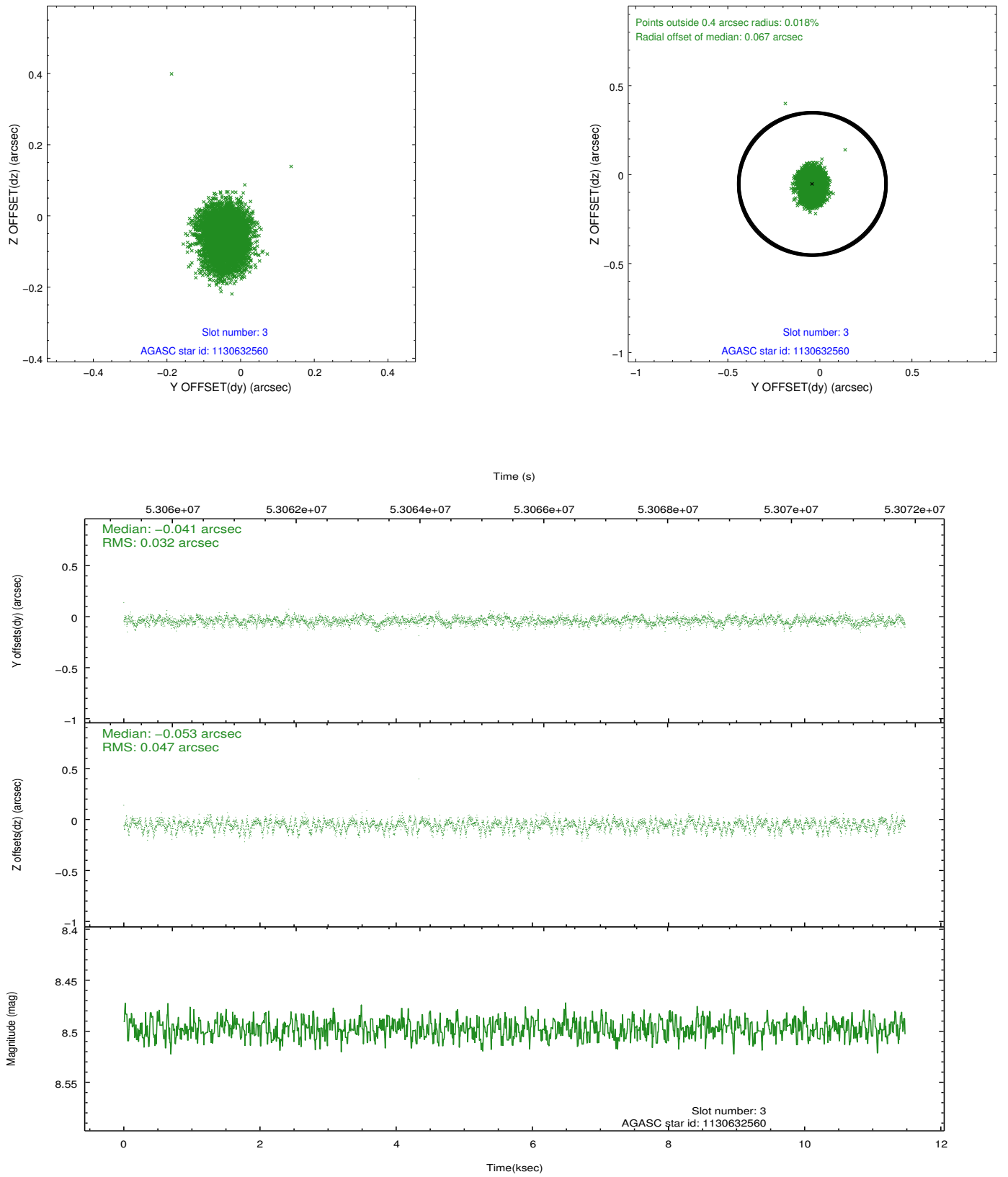


Slot Statistics

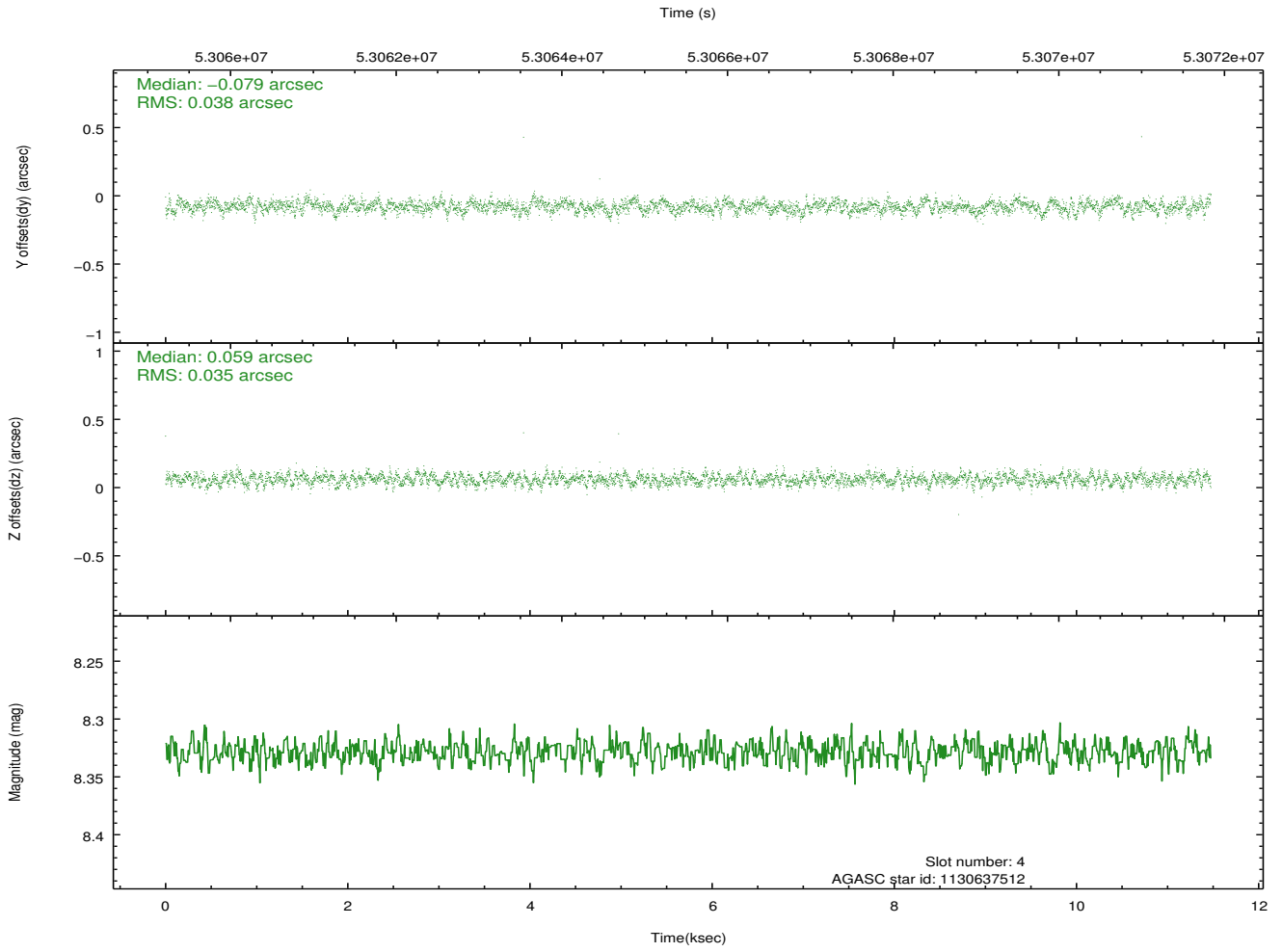
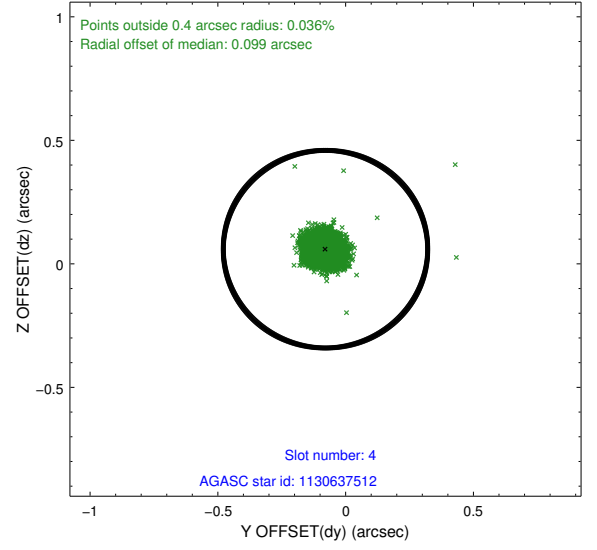
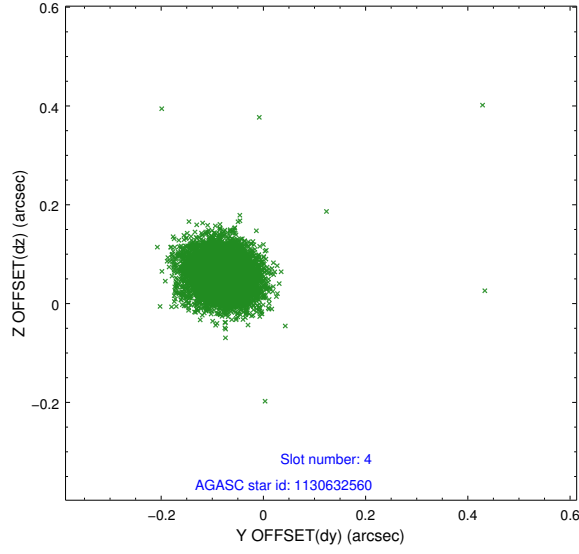
slot	status	id	mag	n_pts	med_dy	med_dz	dr1	dr2	ra	dec	mean_y	mean_z
0	FID	ACIS-I-1	7.26	5599	0.004	0.026	0.007	0.012	0.000000	0.000000	940.79	-825.27
1	FID	ACIS-I-4	7.23	5599	0.088	0.004	0.007	0.012	0.000000	0.000000	2161.09	1074.38
2	FID	ACIS-I-5	7.23	5599	-0.190	0.041	0.006	0.010	0.000000	0.000000	-1807.13	1072.62
3	GUIDE	1130632560	8.50	5598	-0.041	-0.053	0.060	0.100	162.097550	-59.214101	-1332.55	-1737.75
4	GUIDE	1130637512	8.33	5592	-0.079	0.059	0.054	0.085	160.260704	-59.344159	1998.82	-1009.40
5	GUIDE	1130628248	8.82	5596	0.105	0.050	0.067	0.108	160.092155	-59.960260	2099.58	1227.65
6	GUIDE	1130645296	9.07	5599	0.001	0.032	0.072	0.112	162.541185	-59.548371	-2216.72	-585.38
7	GUIDE	1174038520	9.72	5594	0.014	-0.086	0.103	0.161	161.745605	-60.289353	-952.87	2166.88

2.4 Star Slots

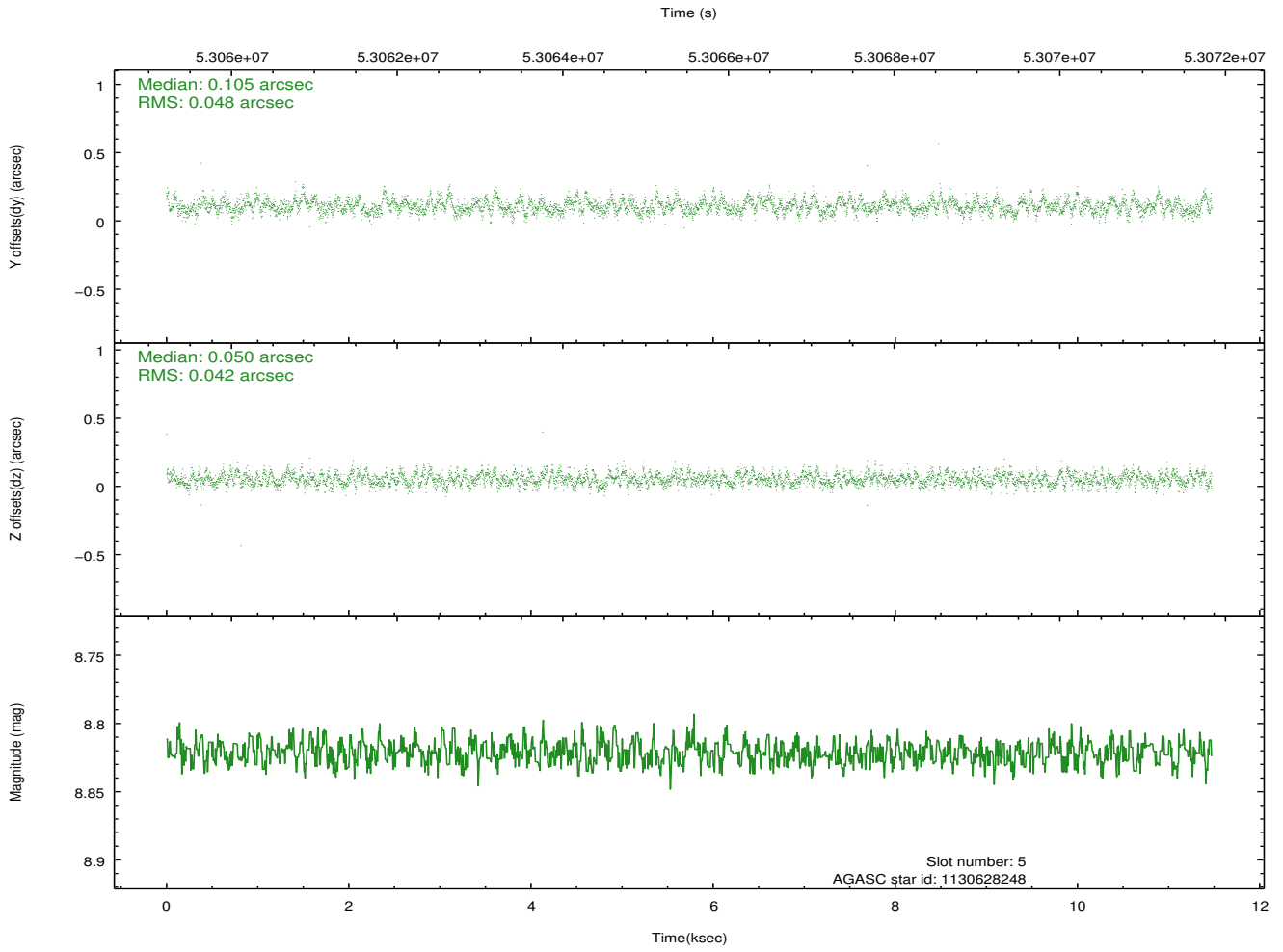
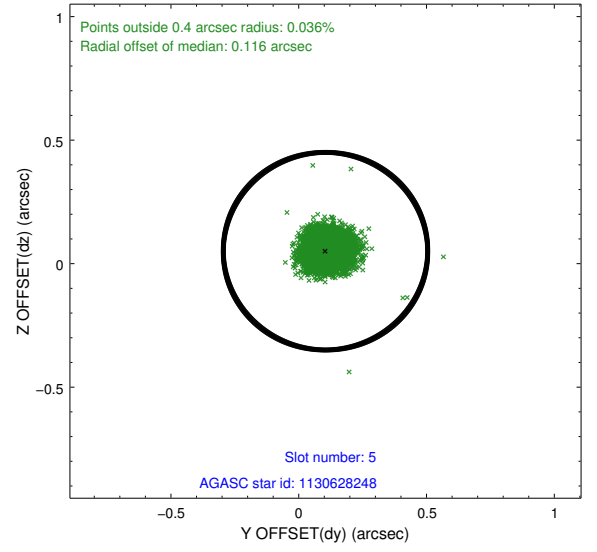
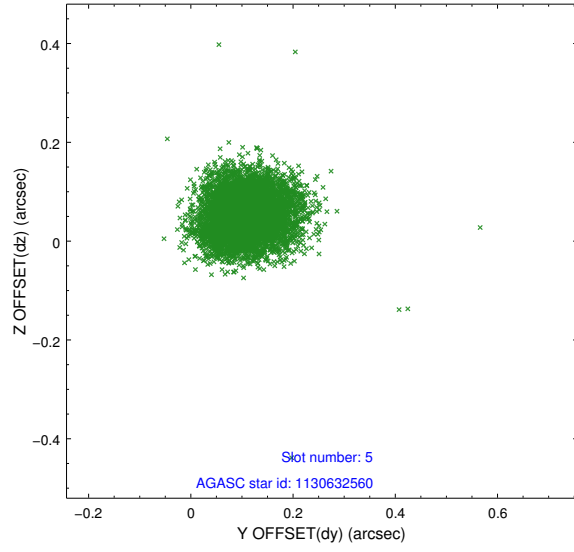
2.4.1 Slot 3



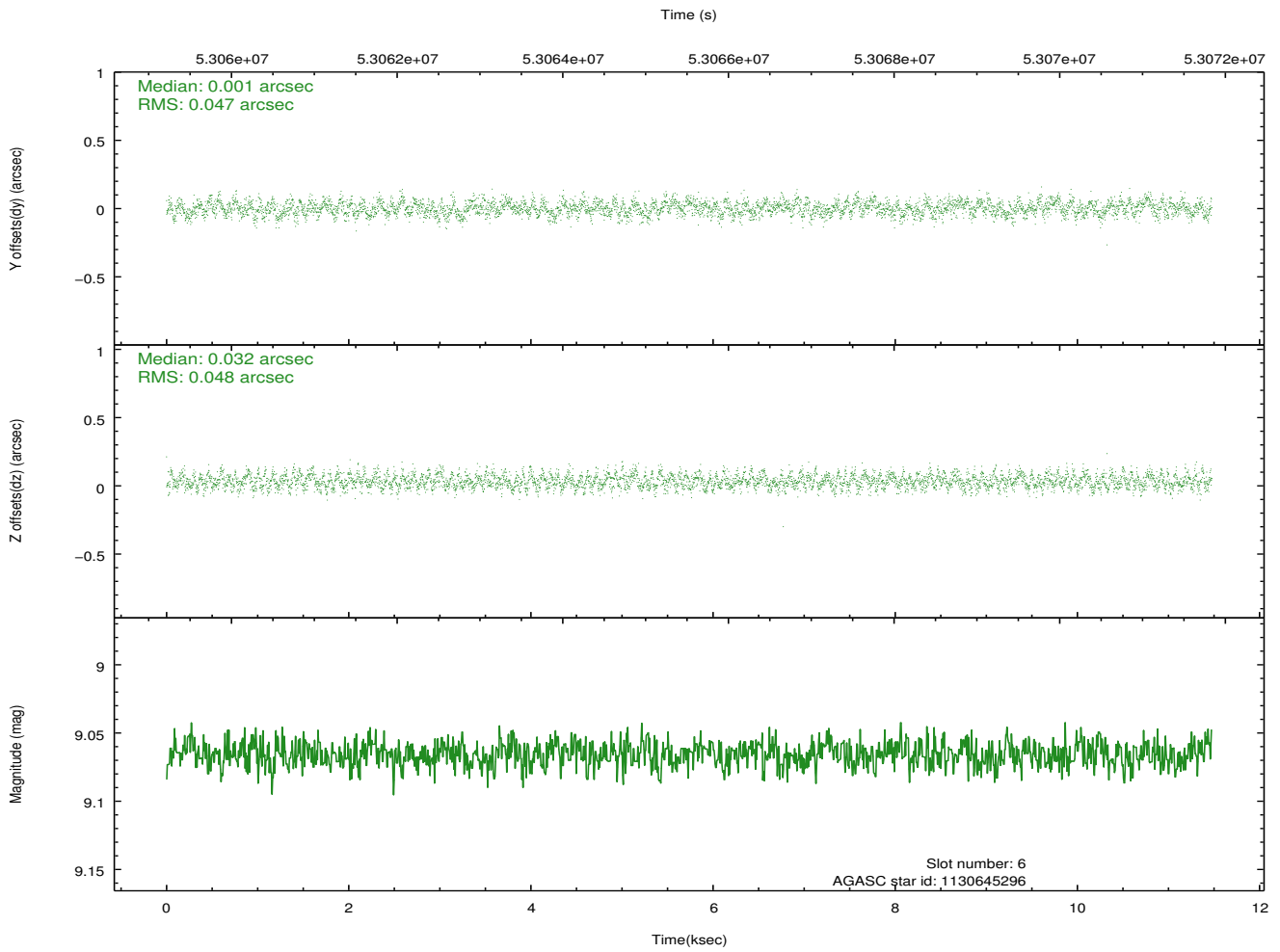
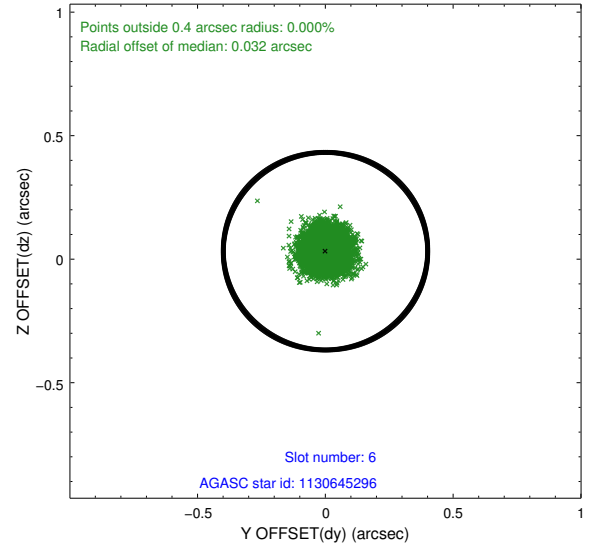
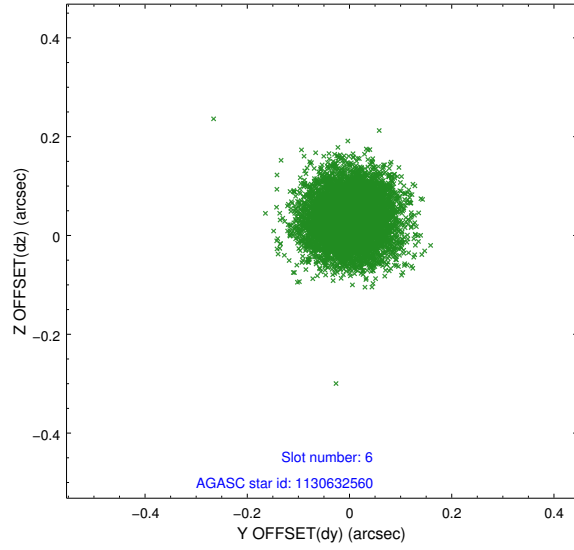
2.4.2 Slot 4



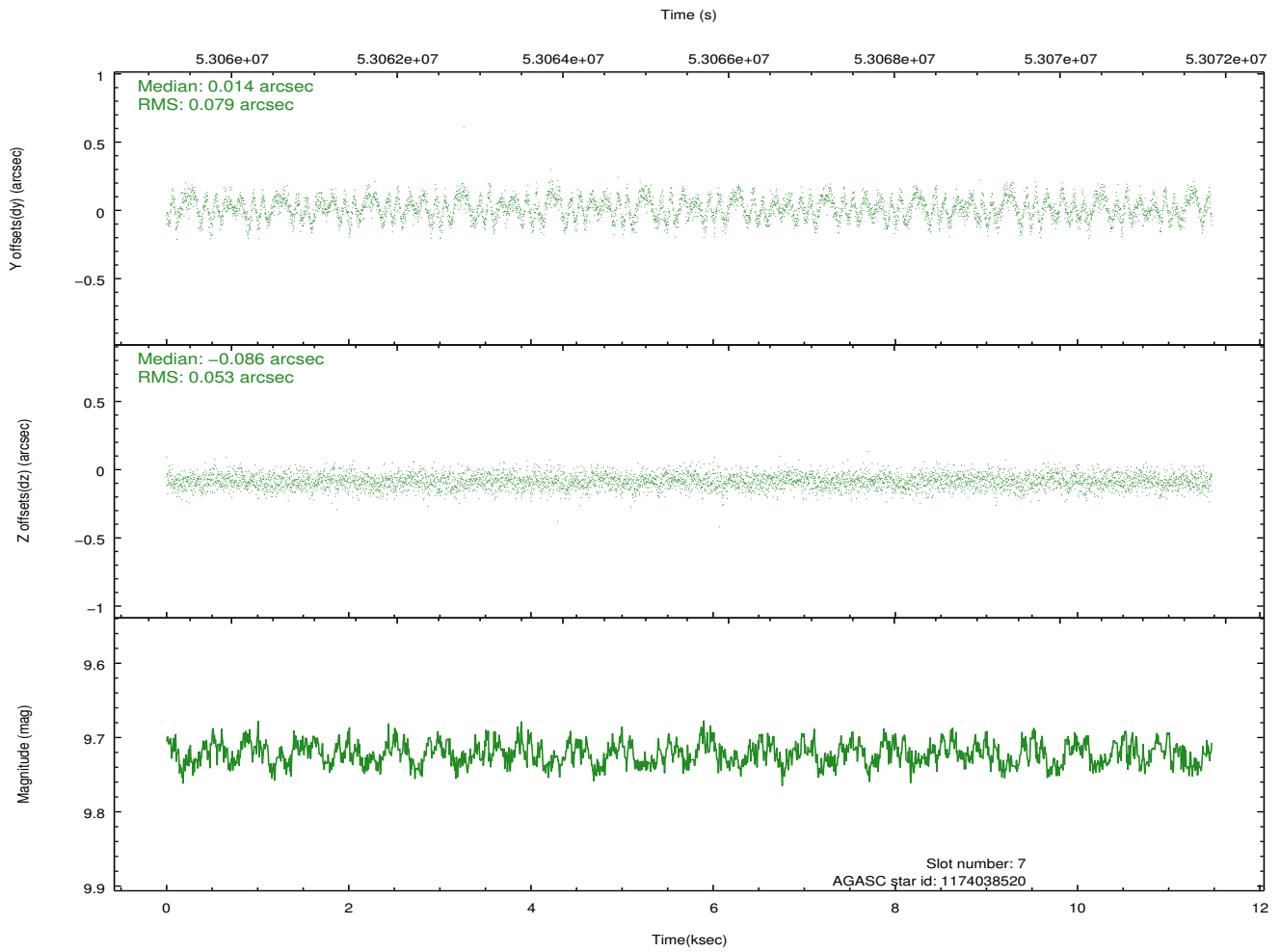
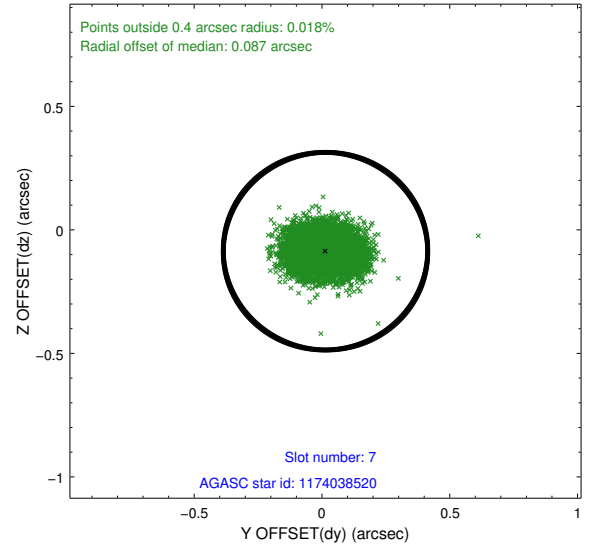
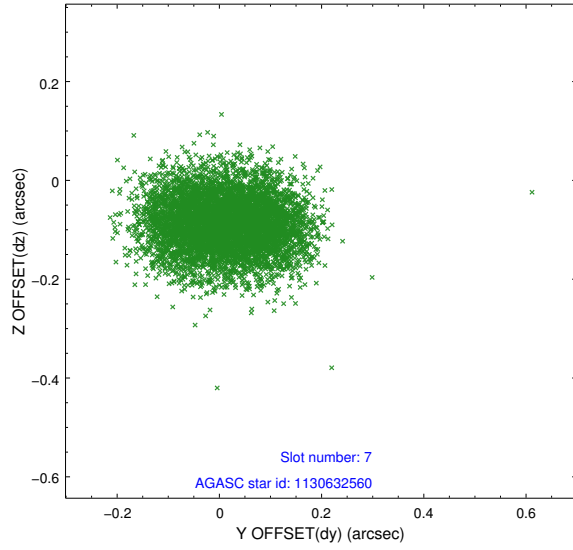
2.4.3 Slot 5



2.4.4 Slot 6

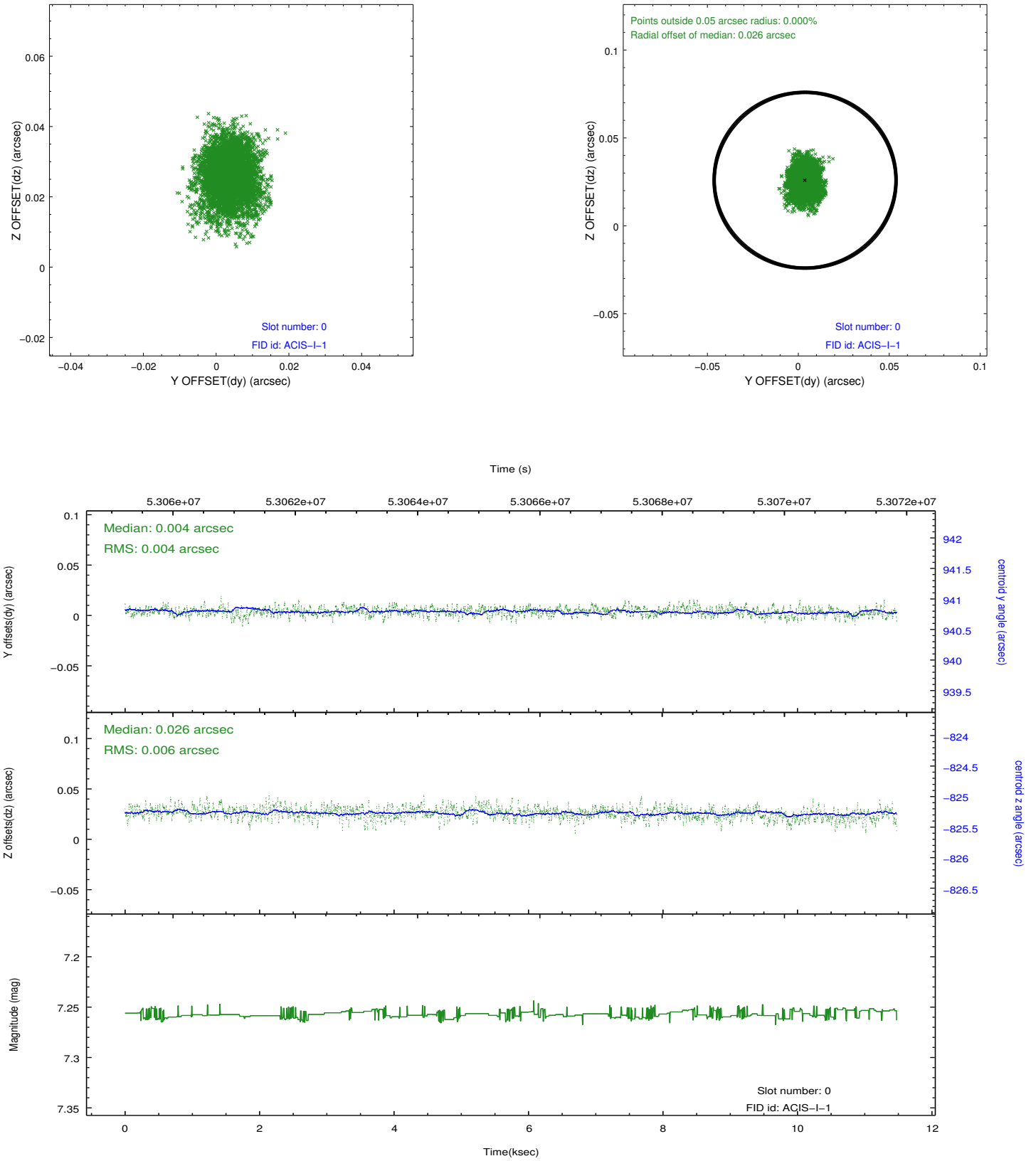


2.4.5 Slot 7

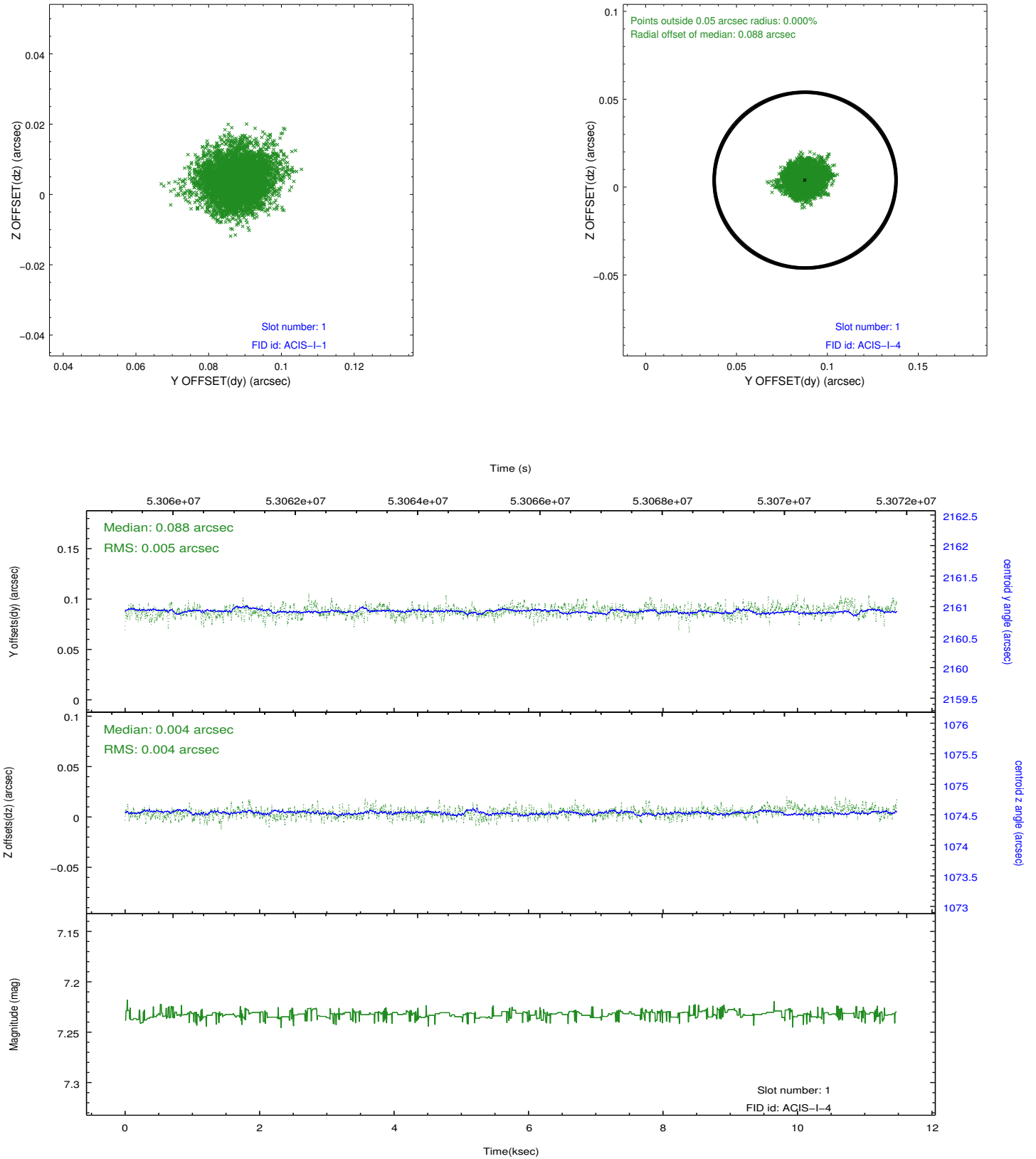


2.5 FID Slots

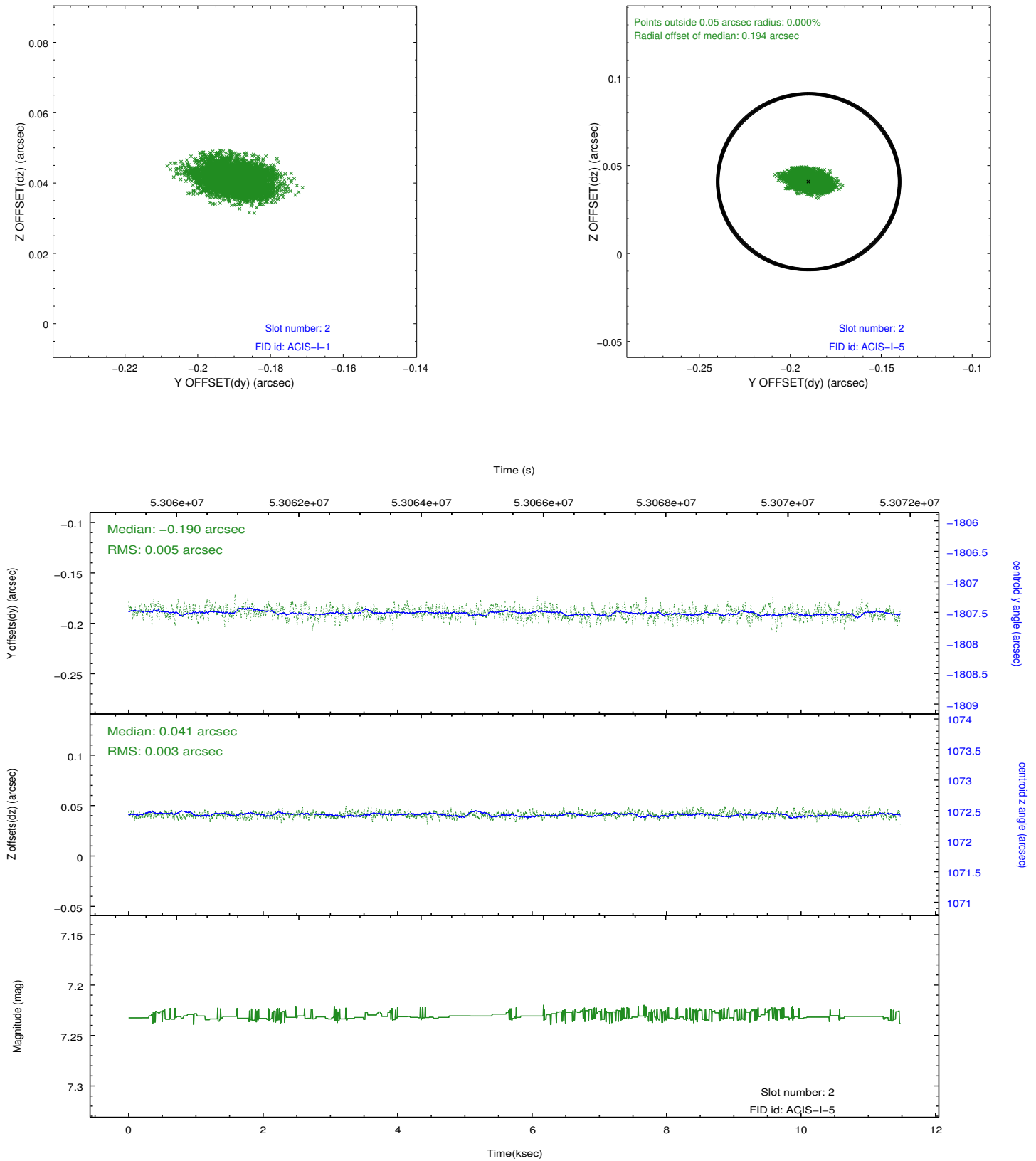
2.5.1 Slot 0



2.5.2 Slot 1



2.5.3 Slot 2



A Summary

A.1 Status

V&V Scientist	Glenn Allen
V&V Date (YYYY-MM-DD)	2010.02.01
V&V Edition	1
V&V Disposition and Status	OK
V&V Charge Time	11.151

A.2 Comments