

V&V Reference Report

L2 ASCDS Version : 8.1.1

Observation 1488 - L2 Version 5

Chandra X-Ray Center

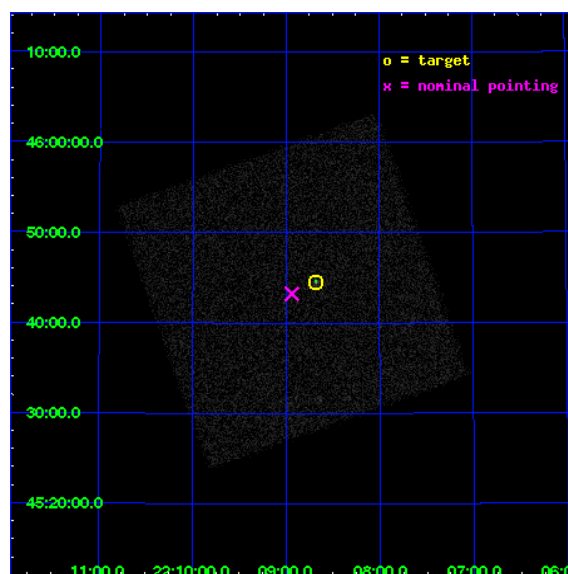
L2 Processing Date : Nov 25 2009

Contents

1	Front	2
2	OBI	3
2.1	OBI	3
2.1.1	Images	3
2.1.2	Parameters	4
2.1.3	Events	4
2.2	Compared Parameters	5
2.3	Aspect	6
2.4	Star Slots	9
2.4.1	Slot 3	9
2.4.2	Slot 4	10
2.4.3	Slot 5	11
2.4.4	Slot 6	12
2.4.5	Slot 7	13
2.5	FID Slots	14
2.5.1	Slot 0	14
2.5.2	Slot 1	15
2.5.3	Slot 2	16
3	Point Sources	17
A	Summary	18
A.1	Status	18
A.2	Comments	18

1 Front

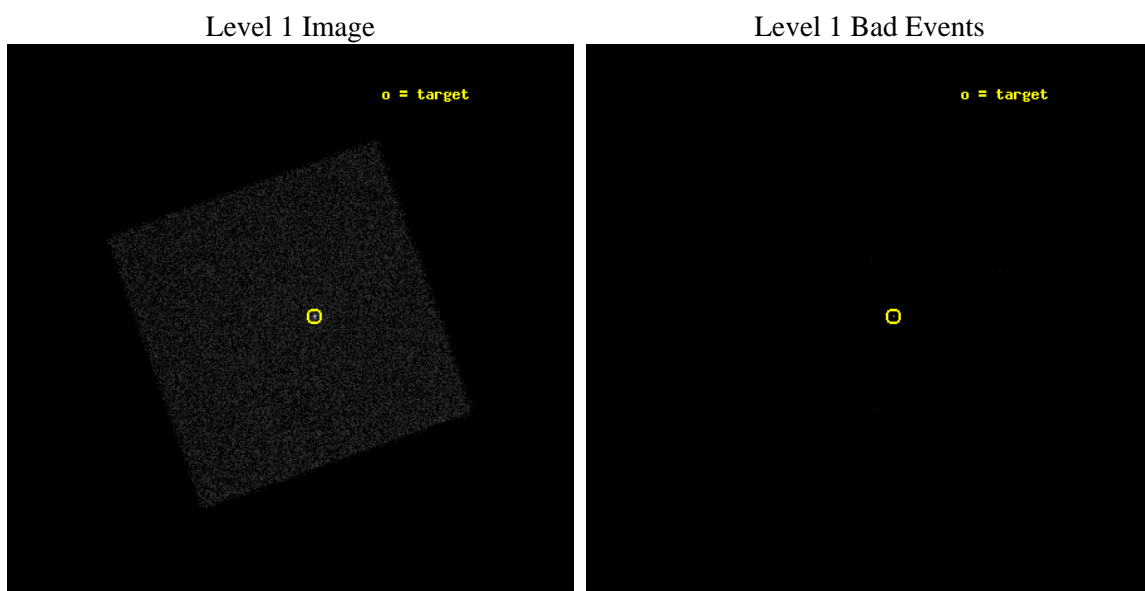
seq_num	280438	Sequence number
obs_id	1488	Observation id
title	 	Proposal title
observer	Dr. CXC Calibration	Principal investigator
object	ArLac	Source name
ra_targ	332.1701	Observer's specified target RA
dec_targ	45.7423	Observer's specified target Dec
ra_nom	332.2347077504	Nominal RA
dec_nom	45.720850326151	Nominal Dec
roll_nom	295.32698263949	Nominal Roll
revision	5	Processing version of data
ontime	1212.8312938958	[s]
livetime	1204.9475936438	Ontime multiplied by DTCOR
l2events	41386	Number of level 2 events



2 OBI

2.1 OBI

2.1.1 Images



2.1.2 Parameters

obi_num	0	Obi number	sched_exp_time	1000.000000	Scheduled observation exposure time
ascdsver	8.1.1	Processing system revision	ontime	1212.8312938958	[s]
caldbver	4.1.4	 	l1events	63311	Number of level 1 events
date	2009-11-25T11:35:48	Date and time of file creation			
revision	4	Processing version of data			

2.1.3 Events

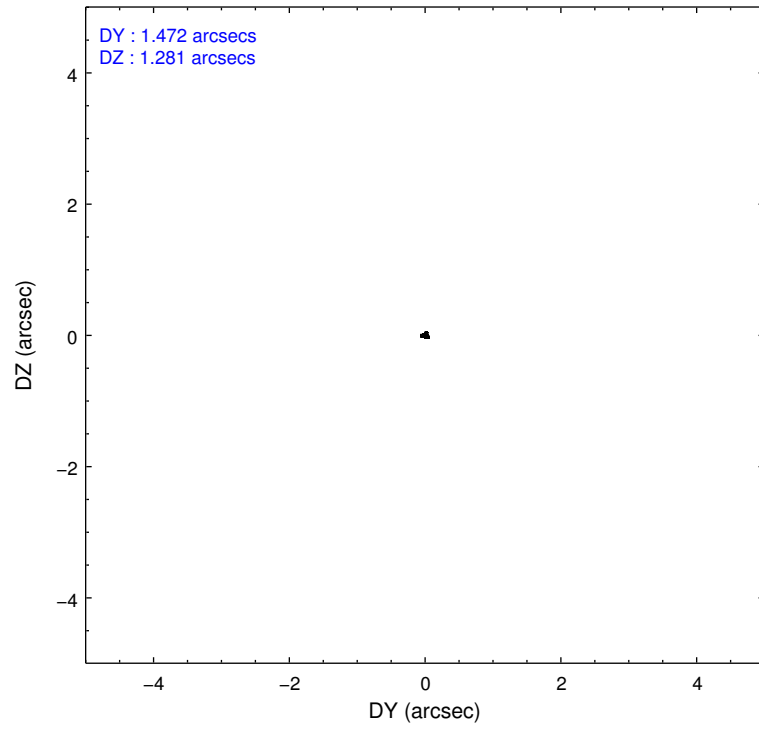
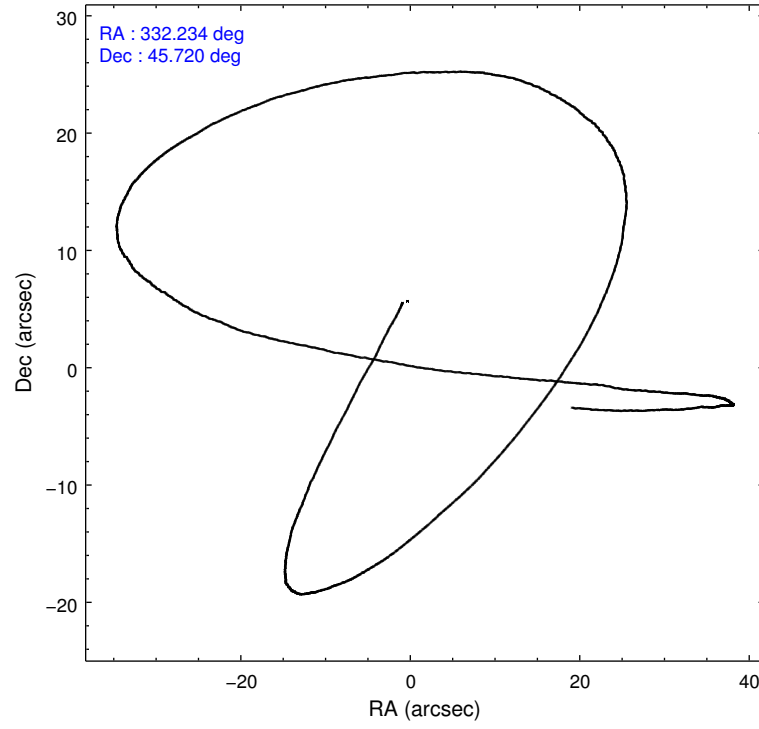
Level 1 Events

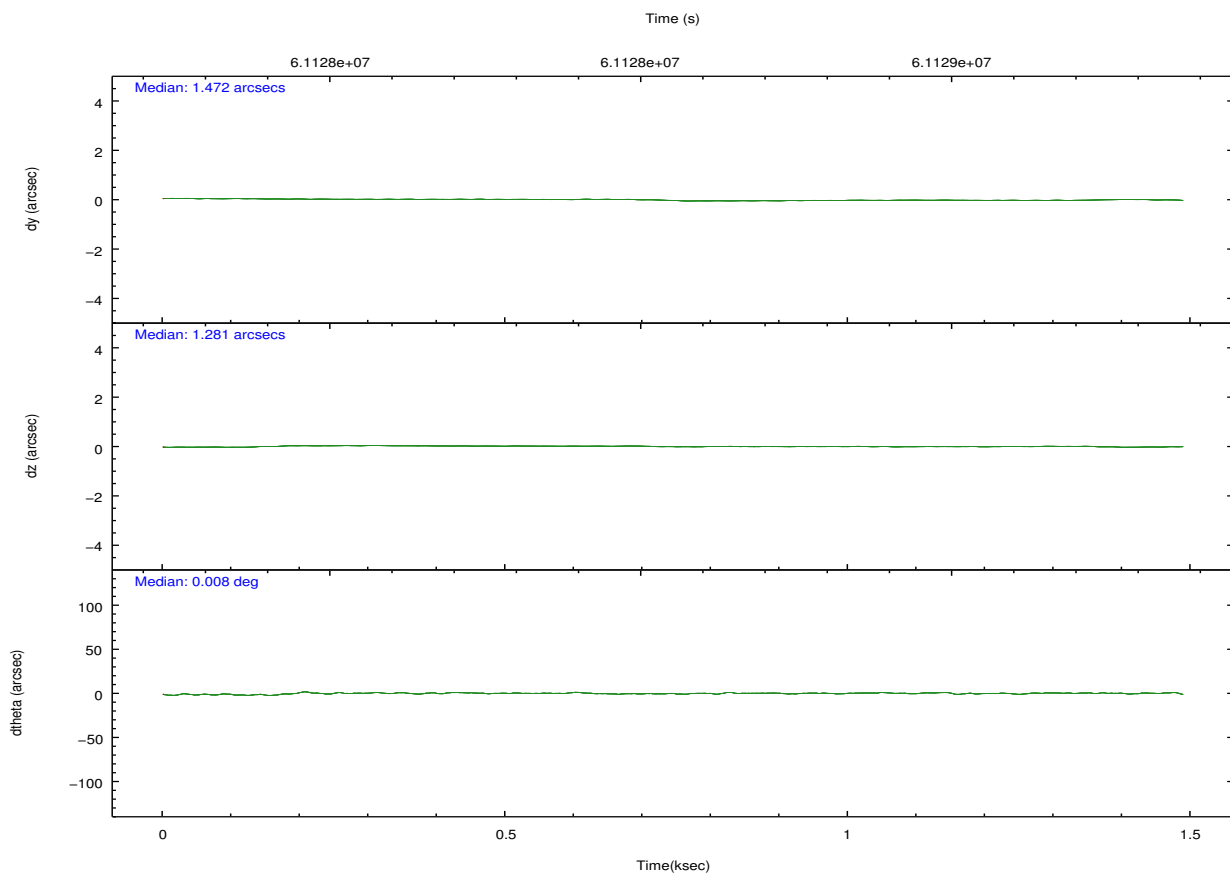
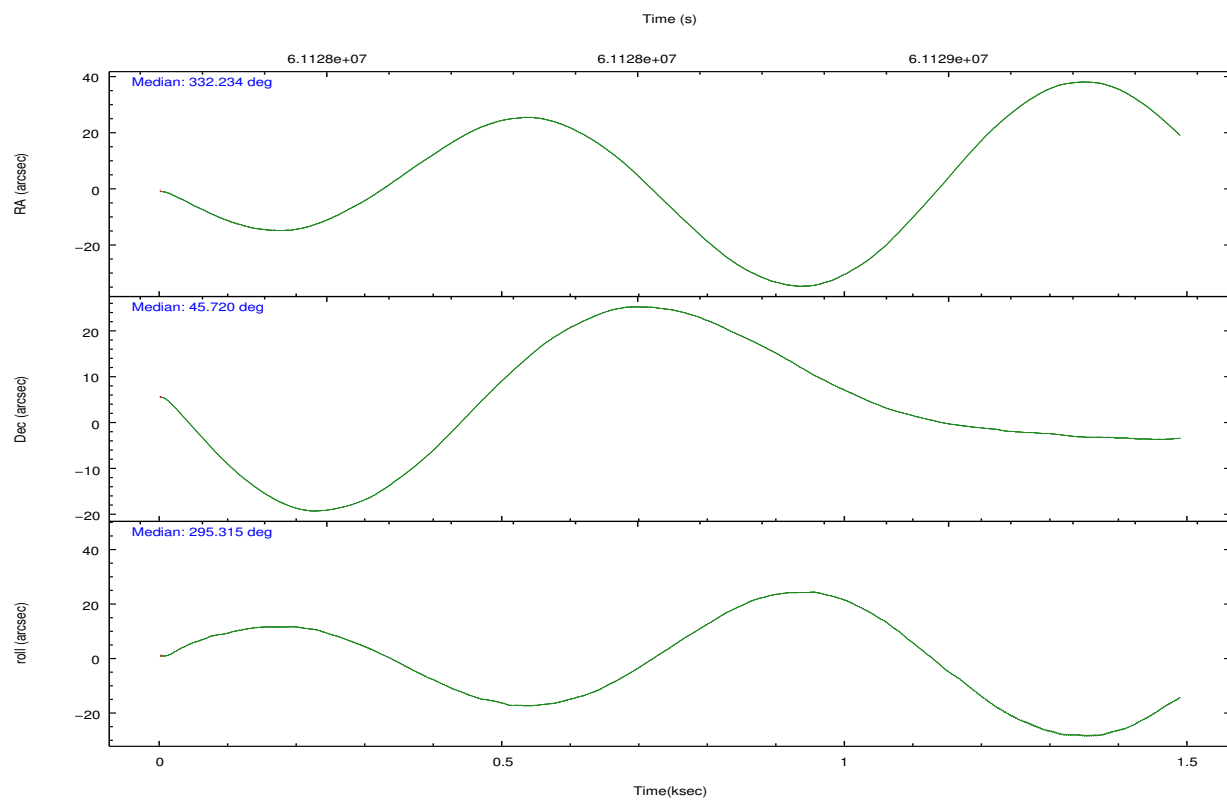
	segment 0
level 1 events	63311
rejected events	2629
rejected %	4%

2.2 Compared Parameters

Parameter	Planned	Actual	Parameter	Planned	Actual
Instrument	HRC	HRC	Obspar format version number	6	6
Detector	HRC-I	HRC-I	Obspar file type	PREDICTED	ACTUAL
Grating	NONE	NONE	Obspar update status	NONE	UPDATED
Data mode	OBSERVING	OBSERVING			
Observation mode	POINTING	POINTING			
Pointing RA	332.201569	332.2347077503981			
Pointing Dec	45.737246	45.72085032615086			
Pointing Roll	295.446209	295.3269826394927			
SIM focus pos (mm)	-1.040293	-1.038866356238299			
SIM defocus (mm)	0	0.001426264420575141			
SIM translation stage pos (mm)	126.985494	126.9854943052878			
SIM translation stage offset (mm)	0	-5.413686238853188e-06			
Observation start time	61128299.184000	61127632.802465			
Observation start date	1999-12-09T12:03:55	1999-12-09T11:53:52			
Observation end time	61129299.184000	61129432.70253			
Observation end date	1999-12-09T12:20:35	1999-12-09T12:23:52			

2.3 Aspect



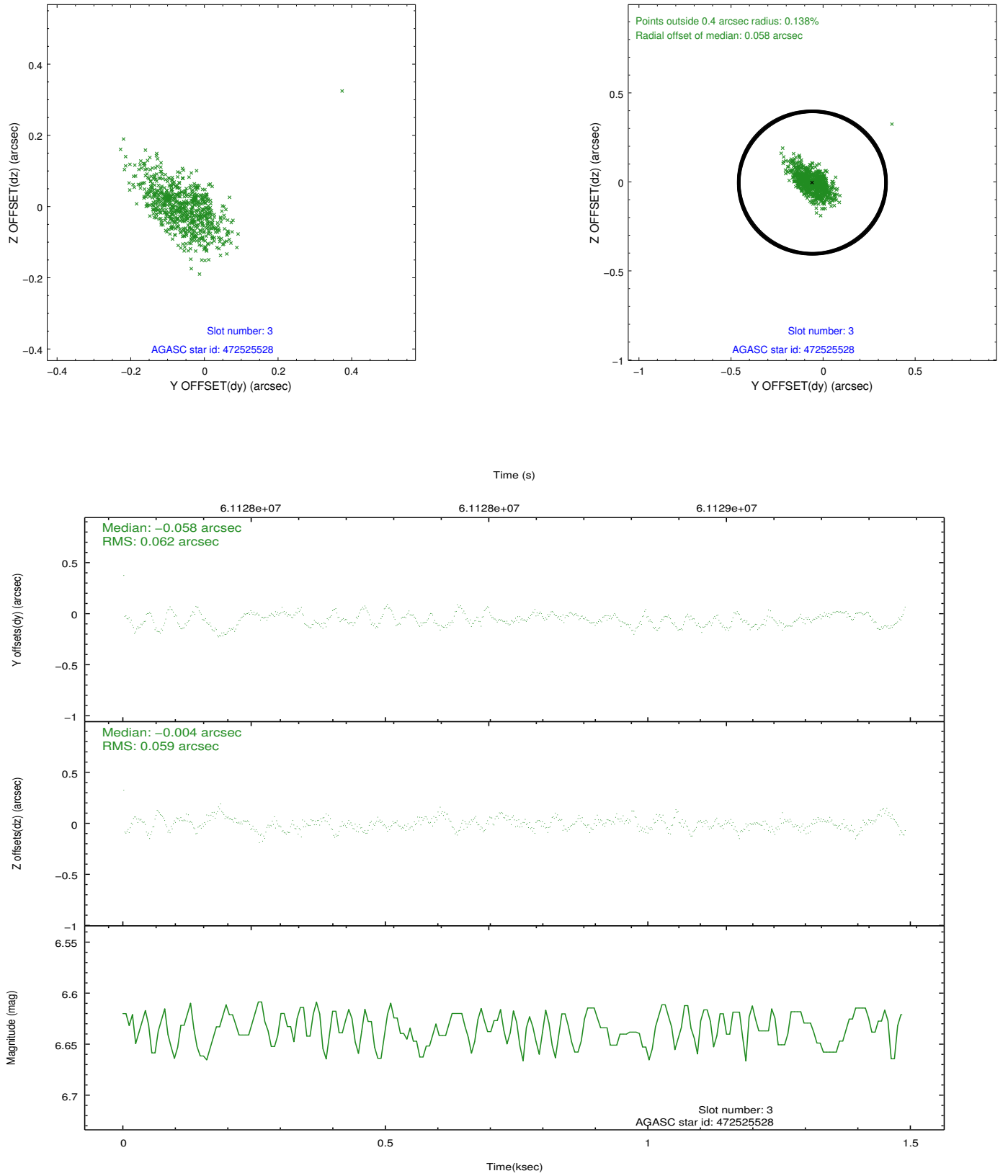


Slot Statistics

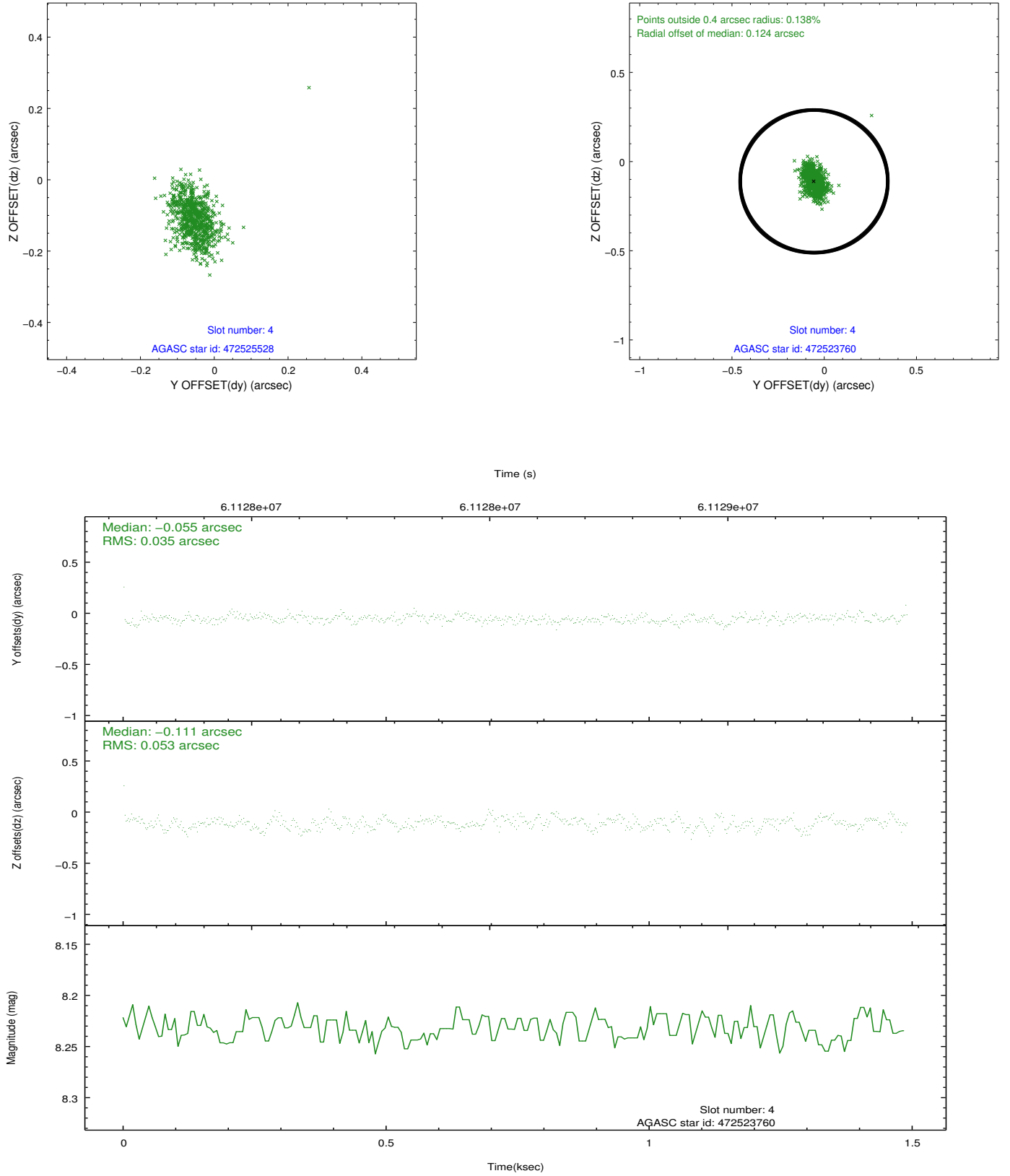
slot	status	id	mag	n_pts	med_dy	med_dz	dr1	dr2	ra	dec	mean_y	mean_z
0	FID	HRC-I-1	6.97	727	0.016	-0.051	0.006	0.015	0.000000	0.000000	-756.88	-1289.07
1	FID	HRC-I-3	7.05	727	0.044	-0.031	0.007	0.013	0.000000	0.000000	-1186.39	1013.74
2	FID	HRC-I-4	6.99	727	0.054	-0.007	0.007	0.013	0.000000	0.000000	1284.31	1014.54
3	GUIDE	472525528	6.63	727	-0.058	-0.004	0.085	0.151	331.551102	45.248694	871.11	-2241.28
4	GUIDE	472523760	8.23	727	-0.055	-0.111	0.066	0.106	331.645363	45.403260	475.66	-1787.04
5	GUIDE	472665256	9.02	727	-0.090	-0.021	0.075	0.123	332.808125	46.195041	-847.00	2072.84
6	GUIDE	472659832	9.47	727	0.007	0.111	0.092	0.147	332.780399	46.098139	-561.80	1868.13
7	GUIDE	472655704	9.48	726	0.185	0.022	0.091	0.148	332.167195	45.285228	1428.44	-774.84

2.4 Star Slots

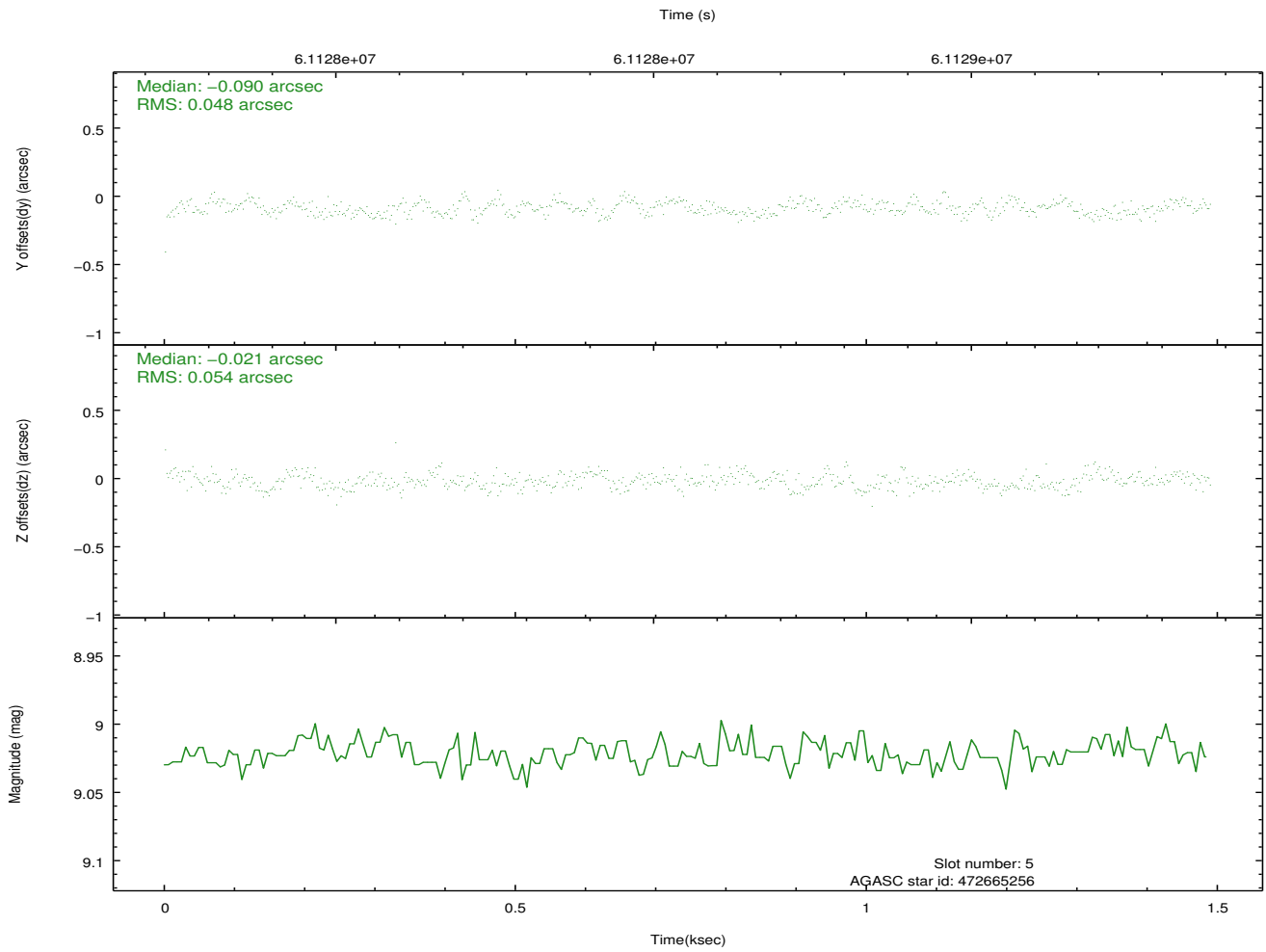
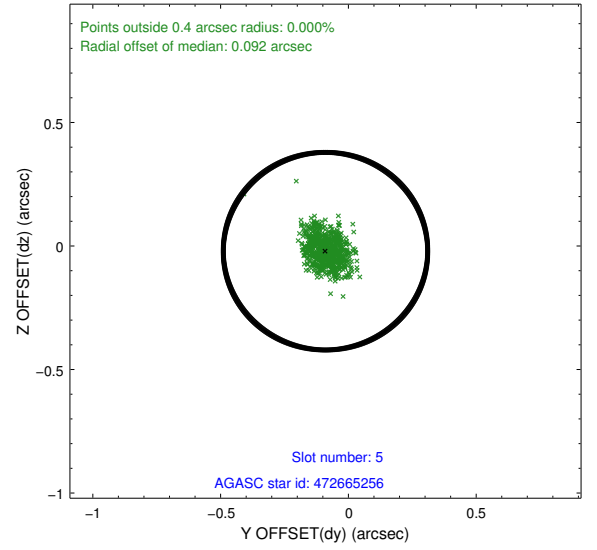
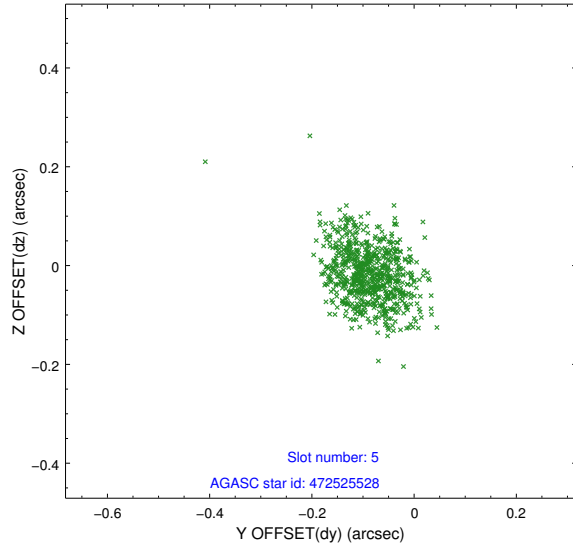
2.4.1 Slot 3



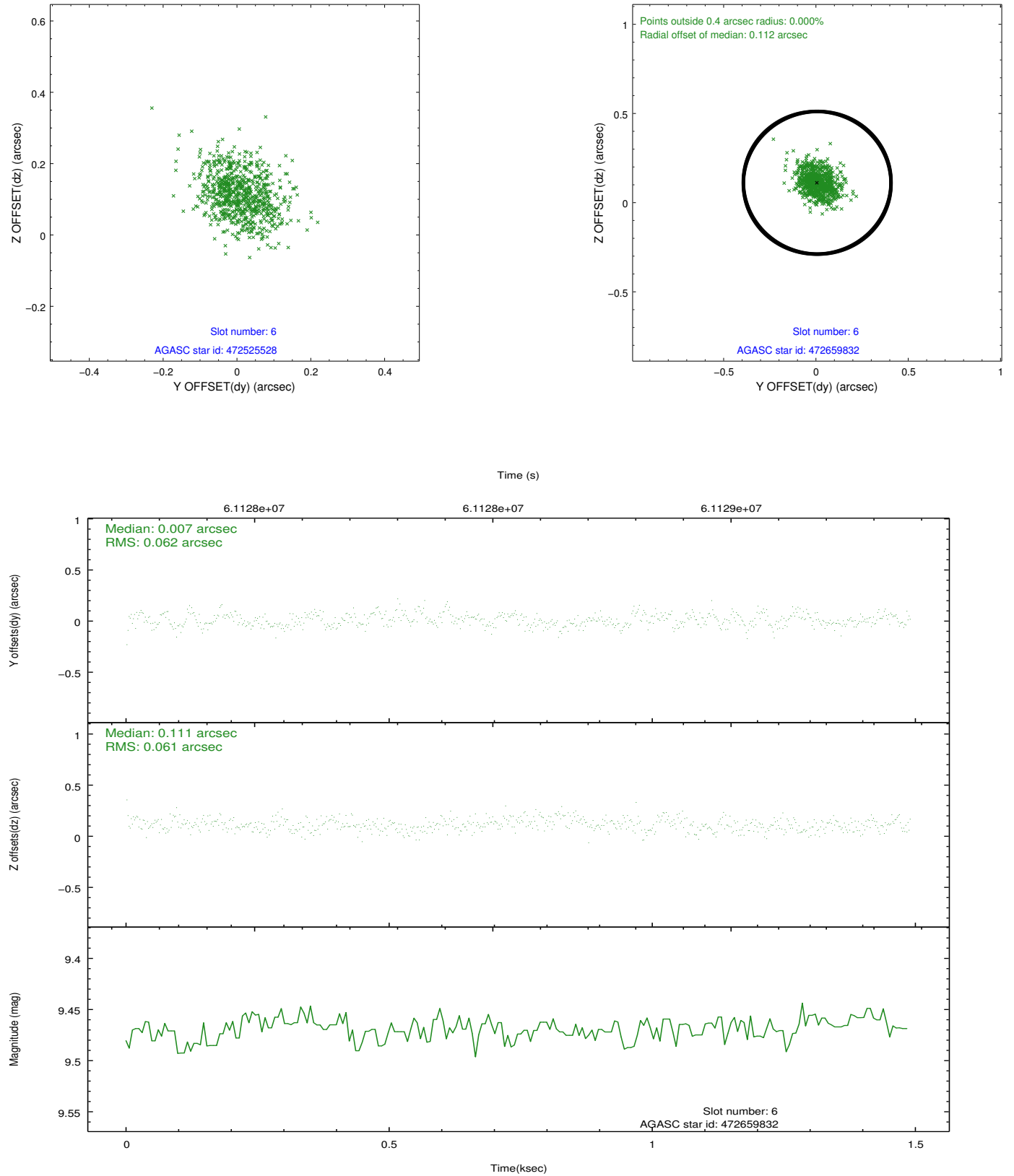
2.4.2 Slot 4



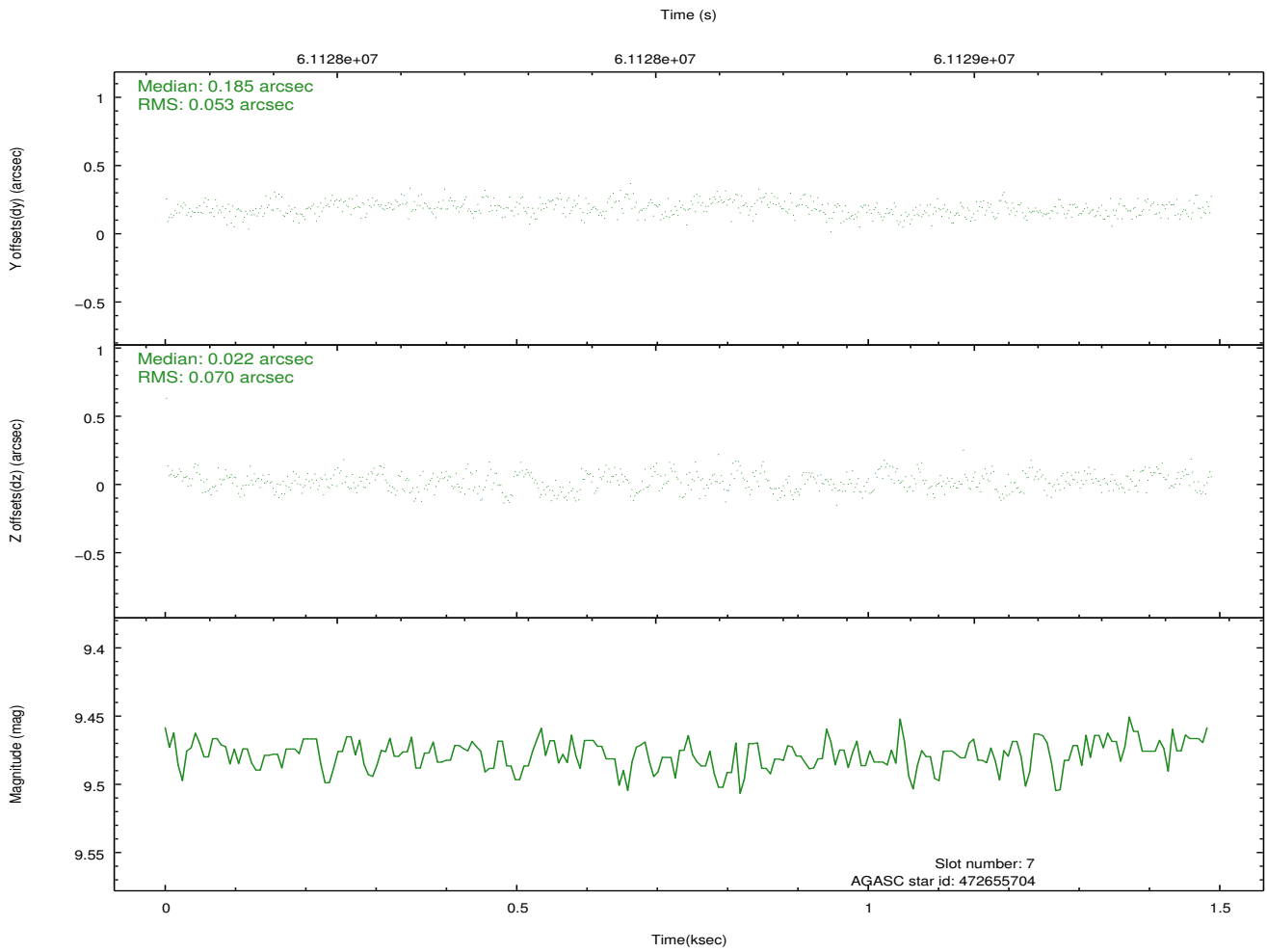
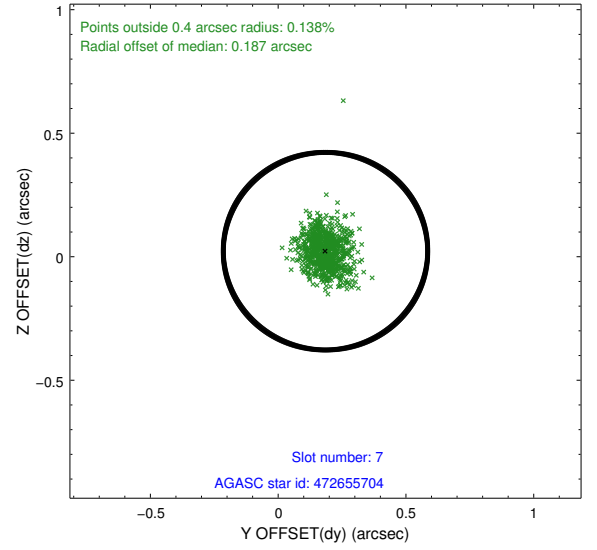
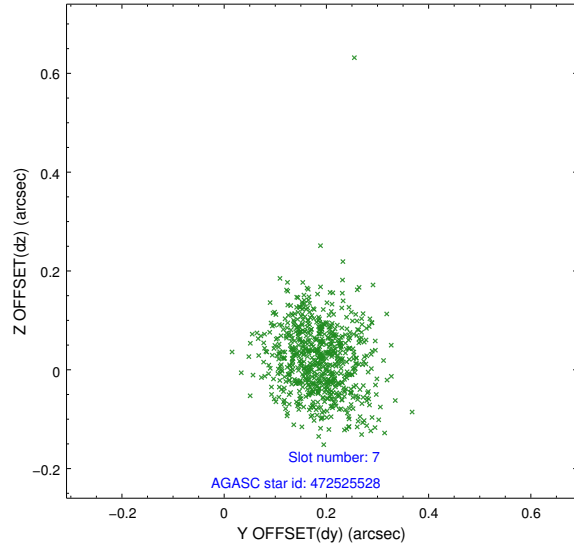
2.4.3 Slot 5



2.4.4 Slot 6

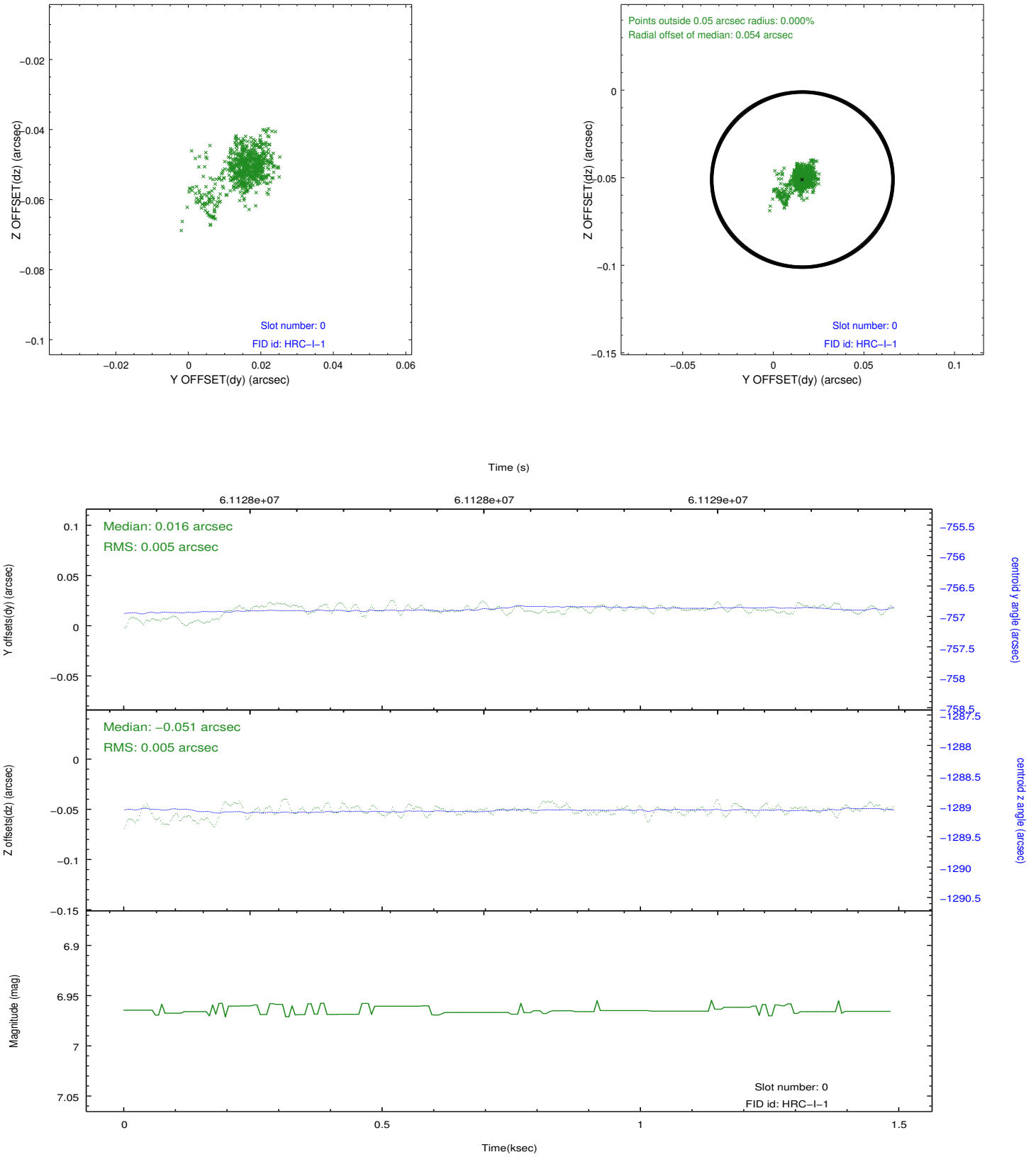


2.4.5 Slot 7

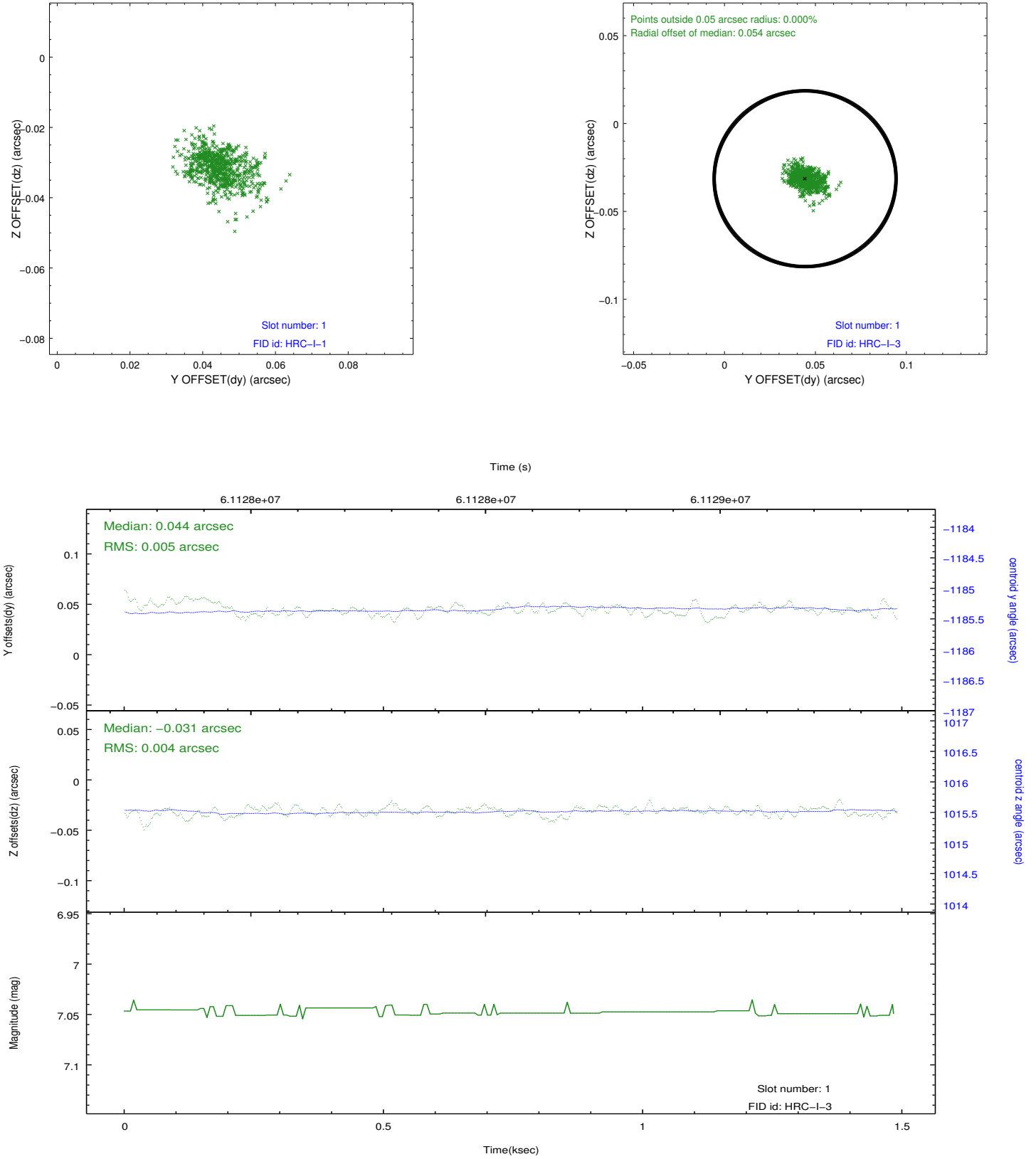


2.5 FID Slots

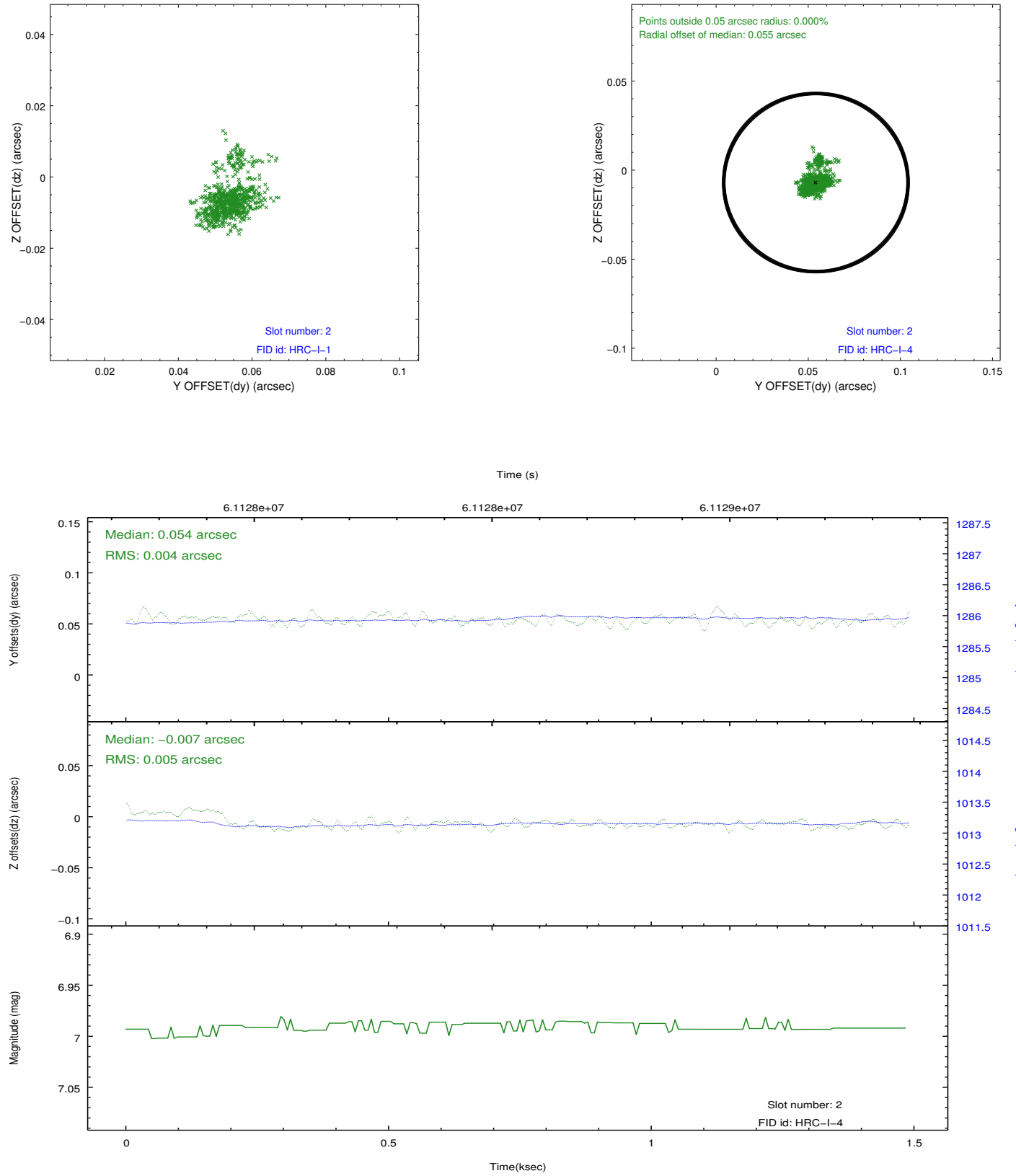
2.5.1 Slot 0



2.5.2 Slot 1

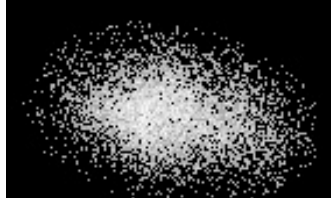


2.5.3 Slot 2



3 Point Sources

2.99 arcmin



A Summary

A.1 Status

V&V Scientist	Jen Lauer
V&V Date (YYYY-MM-DD)	2009.11.25
V&V Edition	1
V&V Disposition and Status	OK
V&V Charge Time	1.212

A.2 Comments

HRC-I cal: ARLac for image blur