

V&V Reference Report

L2 ASCDS Version : 8.2.1

Observation 1167 - L2 Version 4

Chandra X-Ray Center

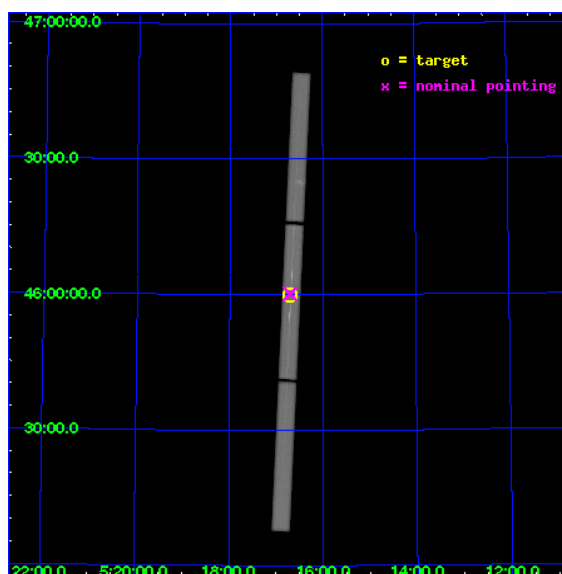
L2 Processing Date : Jan 13 2010

Contents

1	Front	2
2	OBI	3
2.1	OBI	3
2.1.1	Images	3
2.1.2	Parameters	4
2.1.3	Events	4
2.2	Compared Parameters	5
2.3	Aspect	6
2.4	Star Slots	9
2.4.1	Slot 3	9
2.4.2	Slot 4	10
2.4.3	Slot 5	11
2.4.4	Slot 6	12
2.4.5	Slot 7	13
2.5	FID Slots	14
2.5.1	Slot 0	14
2.5.2	Slot 1	15
2.5.3	Slot 2	16
3	Gratings	17
3.1	LETG Arm	17
A	Summary	19
A.1	Status	19
A.2	Comments	19

1 Front

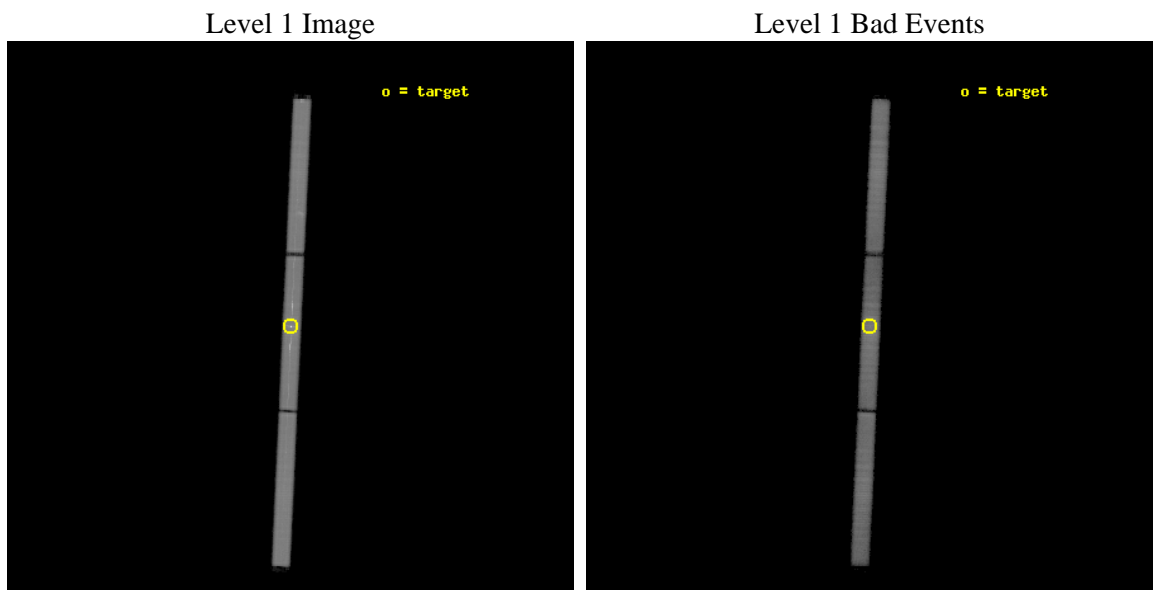
seq_num	280117	Sequence number
obs_id	1167	Observation id
title	 	Proposal title
observer	Dr. CXC Calibration	Principal investigator
object	CAPELLA	Source name
ra_targ	79.17625	Observer's specified target RA
dec_targ	45.997889	Observer's specified target Dec
ra_nom	79.176799171674	Nominal RA
dec_nom	46.003318892579	Nominal Dec
roll_nom	92.581796135905	Nominal Roll
revision	4	Processing version of data
ontime	15274.806798309	[s]
livetime	15139.810299985	Ontime multiplied by DTCOR
l2events	939698	Number of level 2 events



2 OBI

2.1 OBI

2.1.1 Images



2.1.2 Parameters

obi_num	1	Obi number	sched_exp_time	15000.000000	Scheduled observation exposure time
ascdsver	8.2.1	Processing system revision	ontime	15274.806798309	[s]
caldbver	4.1.5	 	ll events	1453914	Number of level 1 events
date	2010-01-13T10:44:15	Date and time of file creation			
revision	4	Processing version of data			

2.1.3 Events

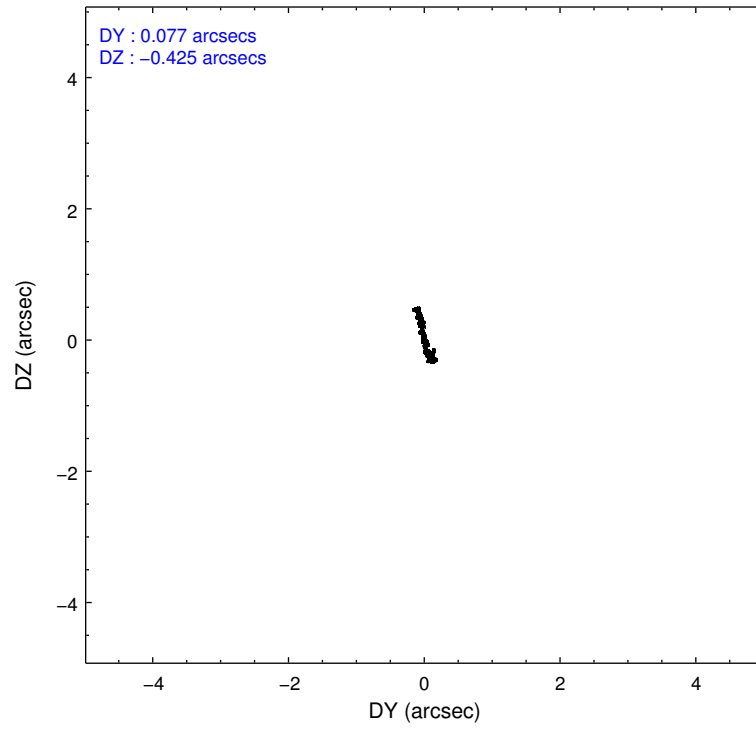
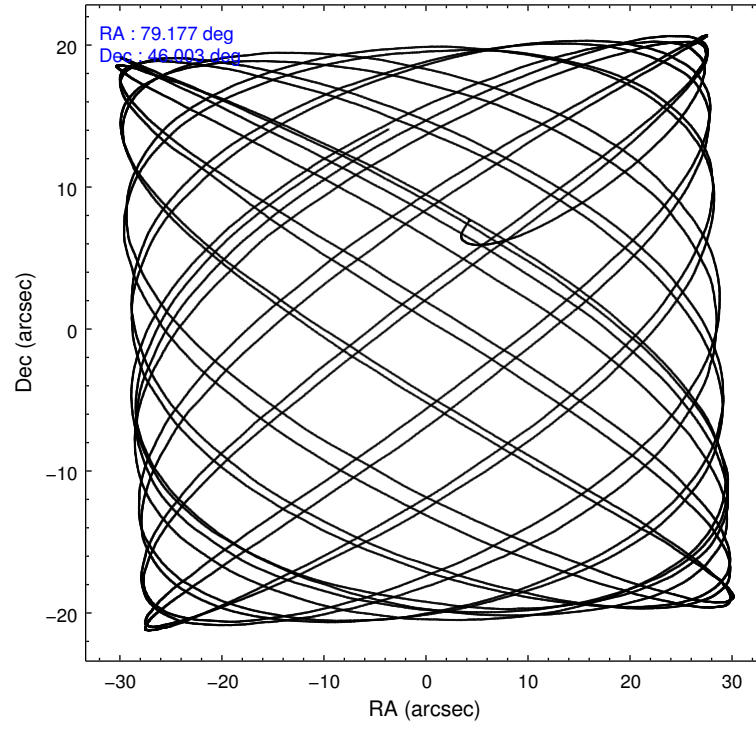
Level 1 Events

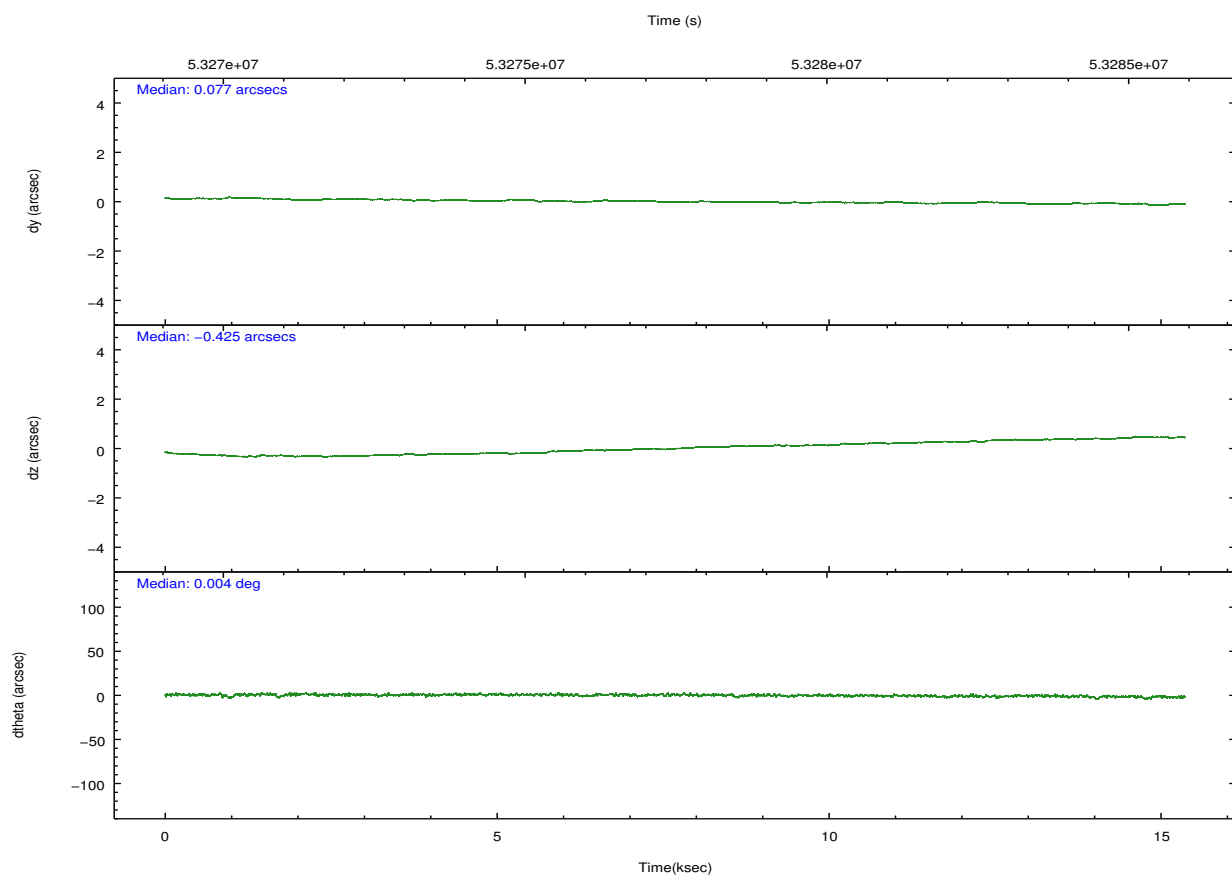
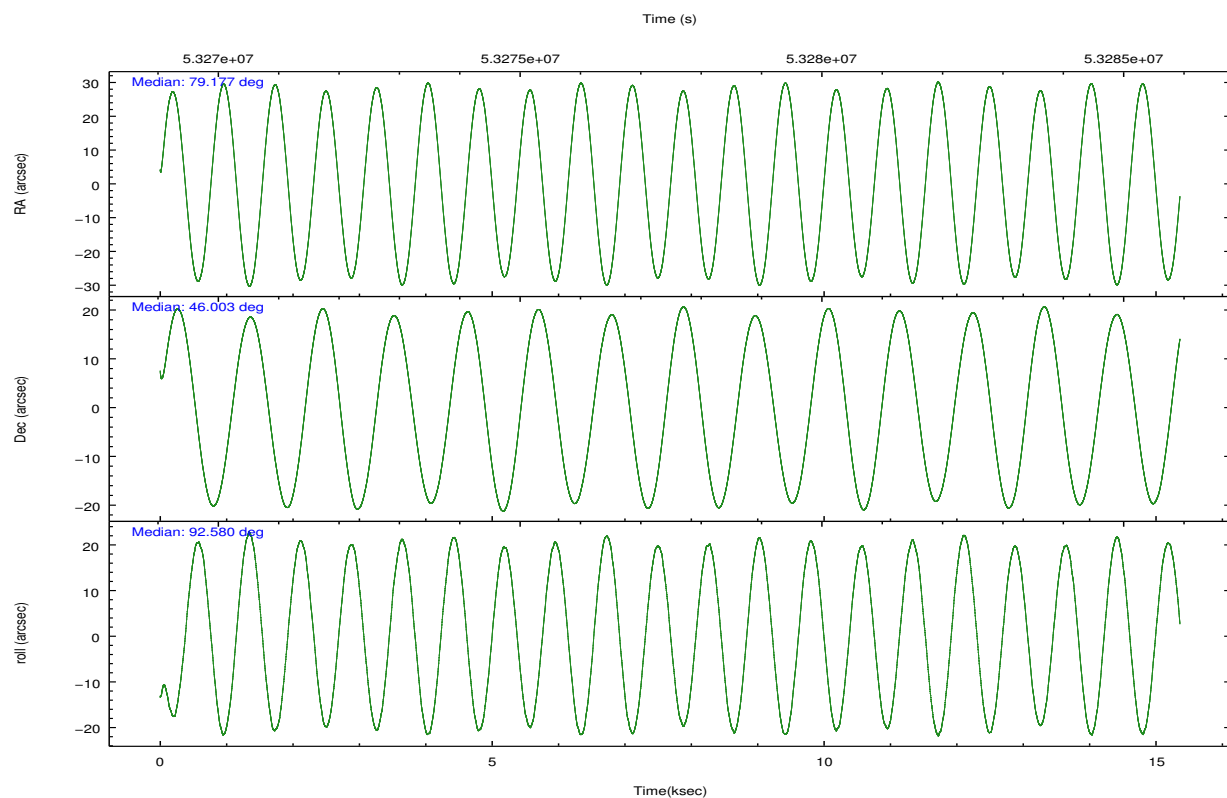
	segment 1	segment 2	segment 3
level 1 events	470651	509971	473292
rejected events	119702	125709	146105
rejected %	25%	24%	30%

2.2 Compared Parameters

Parameter	Planned	Actual	Parameter	Planned	Actual
Instrument	HRC	HRC	Obspar format version number	6	6
Detector	HRC-S	HRC-S	Obspar file type	PREDICTED	ACTUAL
Grating	LETG	LETG	Obspar update status	NONE	UPDATED
Data mode	OBSERVING	OBSERVING			
Observation mode	POINTING	POINTING			
Pointing RA	79.199989	79.1767991716743			
Pointing Dec	45.979268	46.00331889257878			
Pointing Roll	92.497793	92.58179613590485			
SIM focus pos (mm)	-1.629586	-1.466087753088226			
SIM defocus (mm)	-0.09624922895667126	0.06724888631607095			
SIM translation stage pos (mm)	250.455976	250.466033080201			
SIM translation stage offset (mm)	0	-0.01005468664627074			
Observation start time	53270164.184000	53268930.863815			
Observation start date	1999-09-09T13:15:00	1999-09-09T12:55:30			
Observation end time	53285164.184000	53285298.064402			
Observation end date	1999-09-09T17:25:00	1999-09-09T17:28:18			

2.3 Aspect



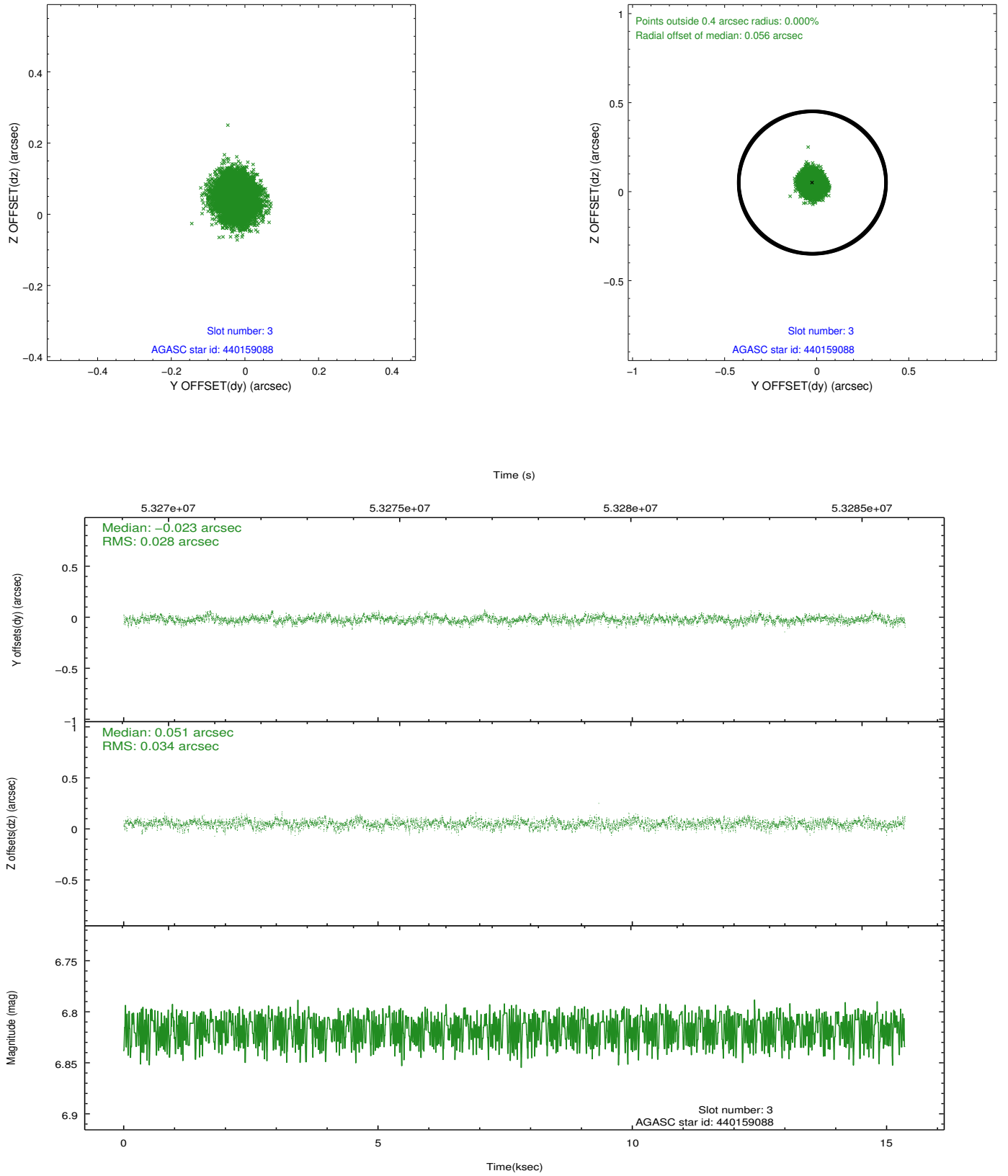


Slot Statistics

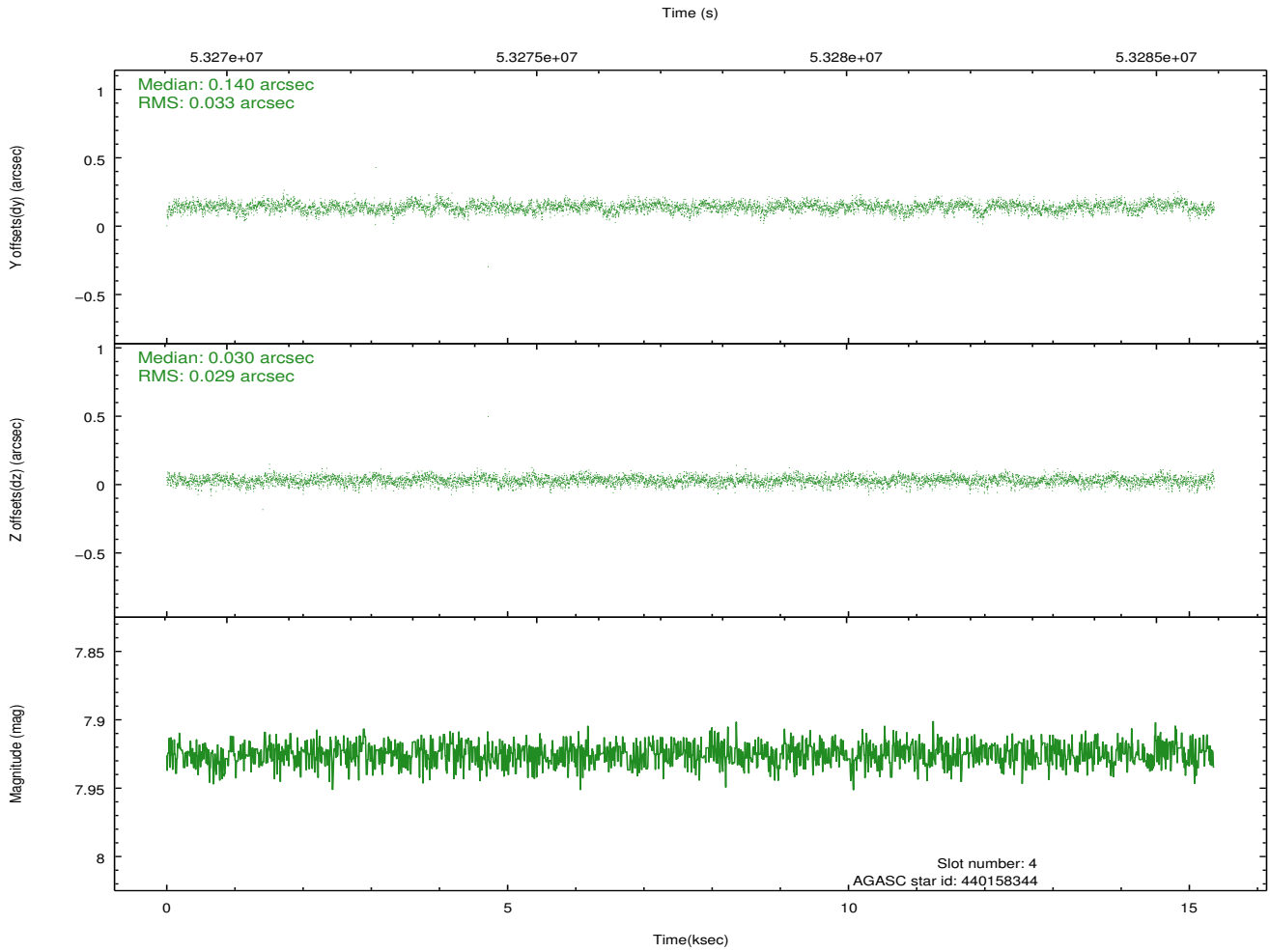
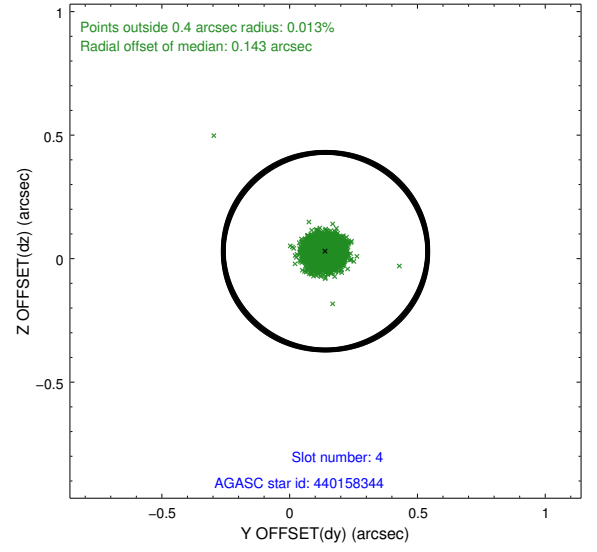
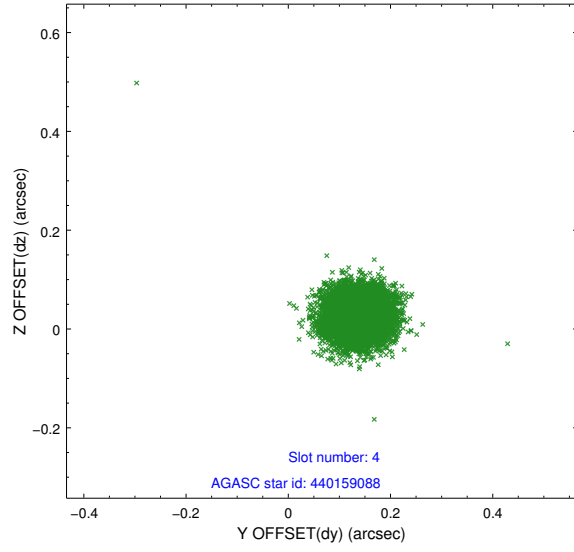
slot	status	id	mag	n_pts	med_dy	med_dz	dr1	dr2	ra	dec	mean_y	mean_z
0	FID	HRC-S-1	6.96	7494	0.146	-0.071	0.013	0.022	0.000000	0.000000	-1154.12	-447.72
1	FID	HRC-S-3	6.97	7495	0.095	-0.119	0.014	0.025	0.000000	0.000000	-1156.92	581.70
2	FID	HRC-S-4	6.95	7495	0.147	-0.107	0.006	0.011	0.000000	0.000000	1244.10	584.11
3	GUIDE	440159088	6.82	7495	-0.023	0.051	0.047	0.075	79.453034	46.128063	510.14	-653.57
4	GUIDE	440158344	7.92	7494	0.140	0.030	0.046	0.076	79.344888	45.394991	-2115.30	-273.95
5	GUIDE	440149808	8.51	7494	-0.052	-0.076	0.056	0.091	78.873930	46.405955	1572.69	742.07
6	GUIDE	438438936	8.97	7492	-0.134	-0.094	0.081	0.130	78.241026	46.550197	2172.76	2282.38
7	GUIDE	440145944	9.10	7487	0.075	0.091	0.081	0.127	80.083717	45.428844	-2062.75	-2144.01

2.4 Star Slots

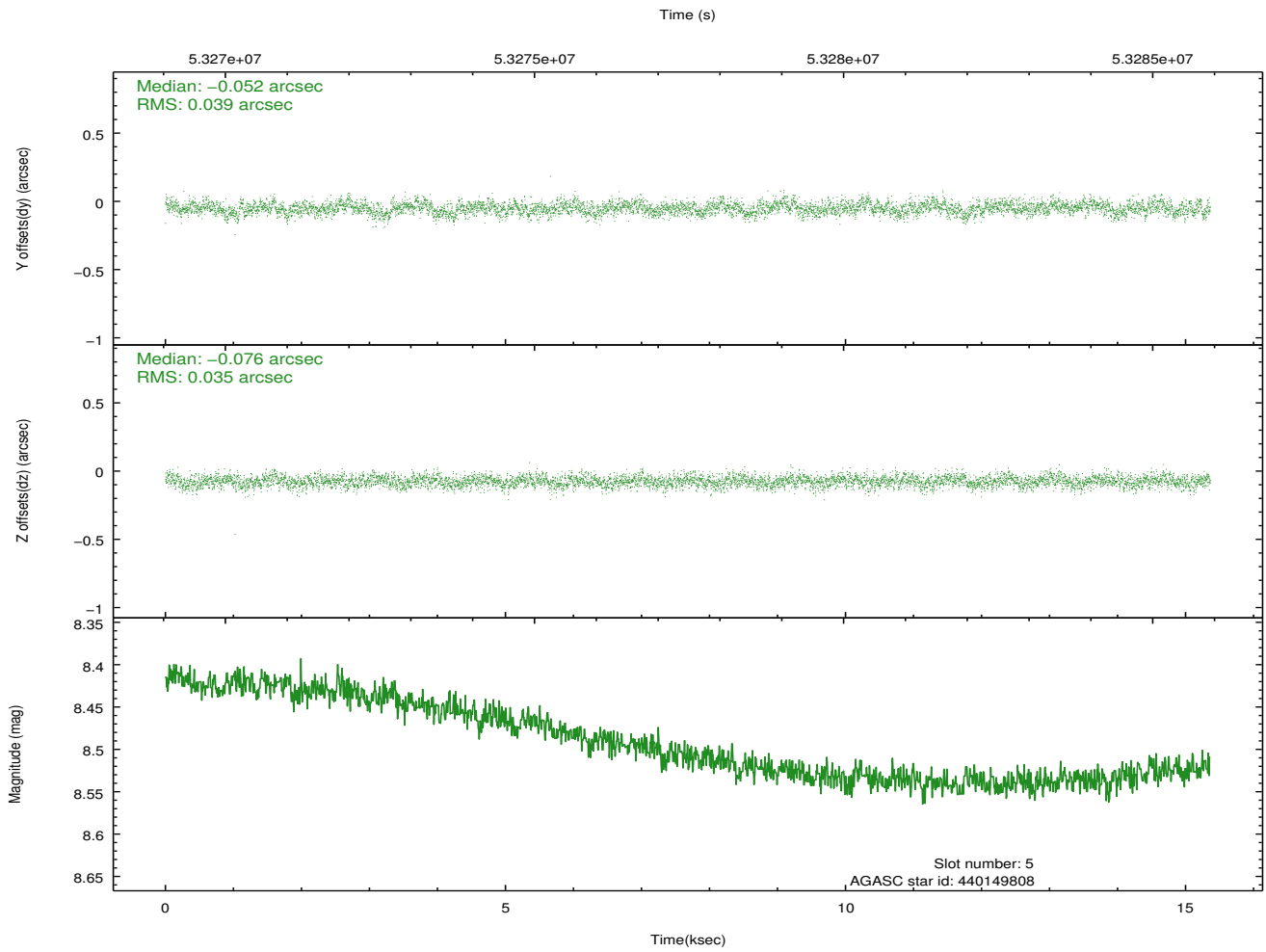
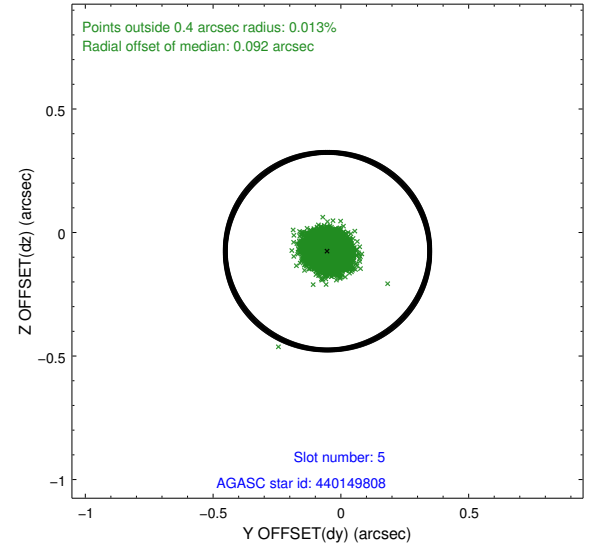
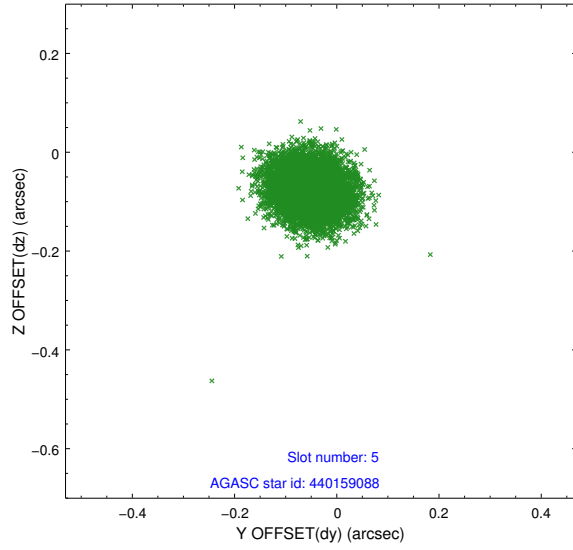
2.4.1 Slot 3



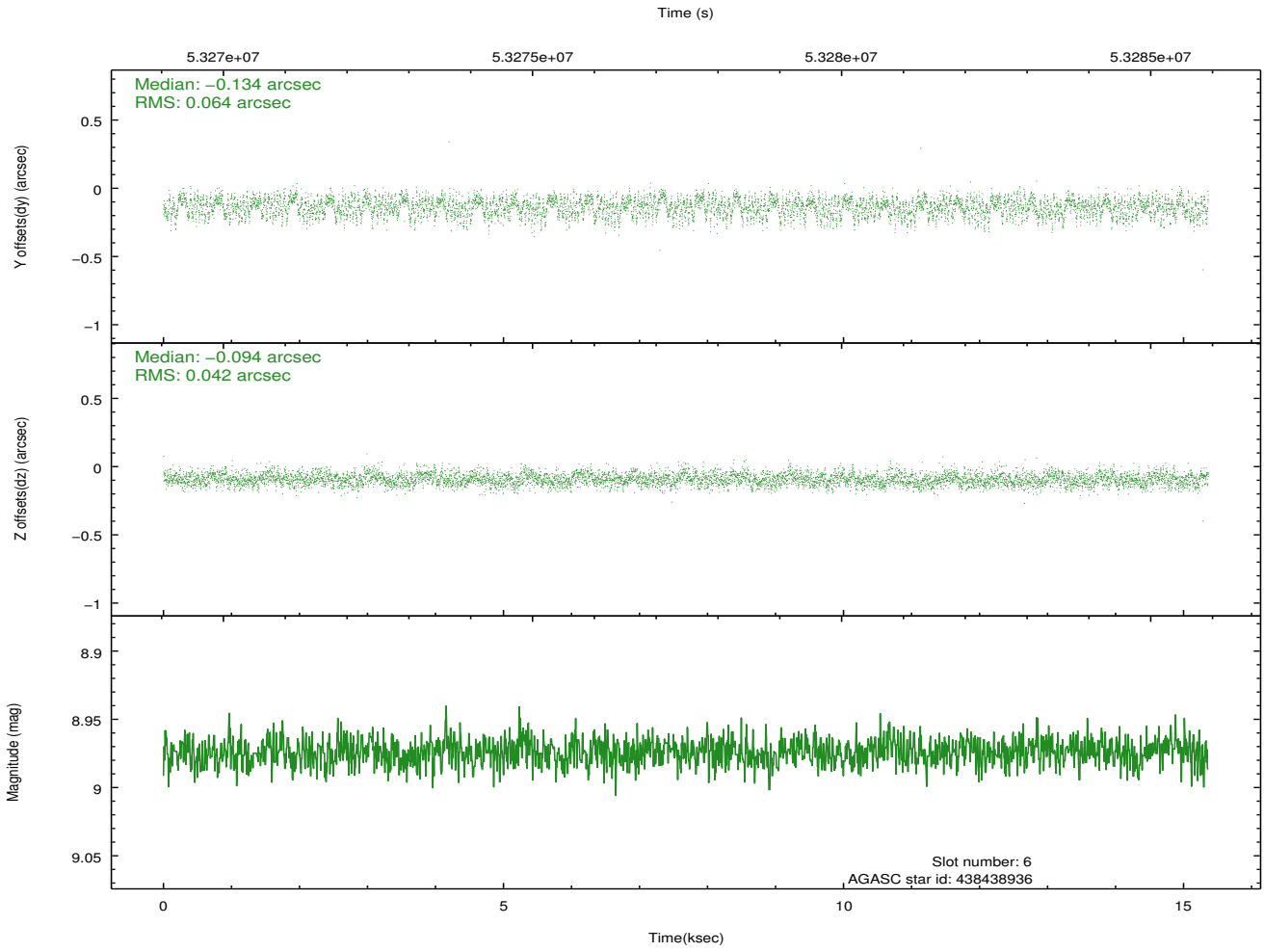
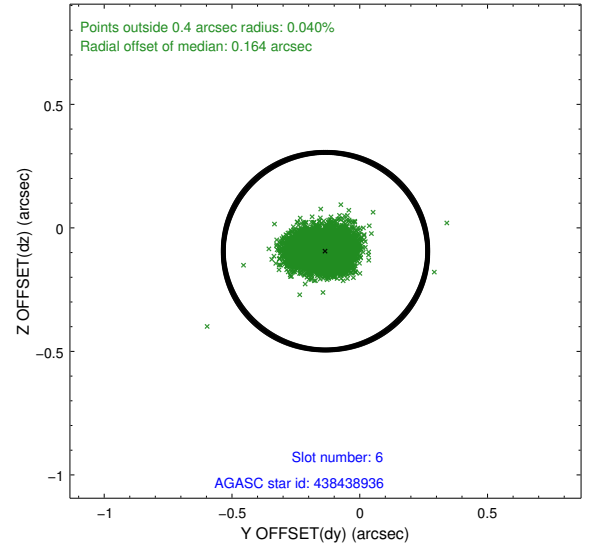
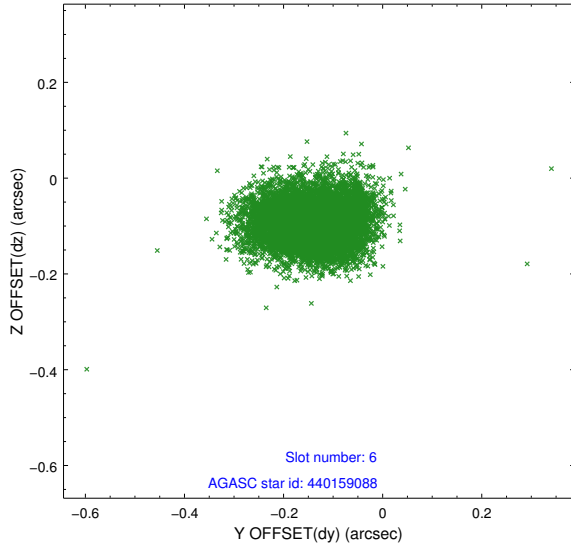
2.4.2 Slot 4



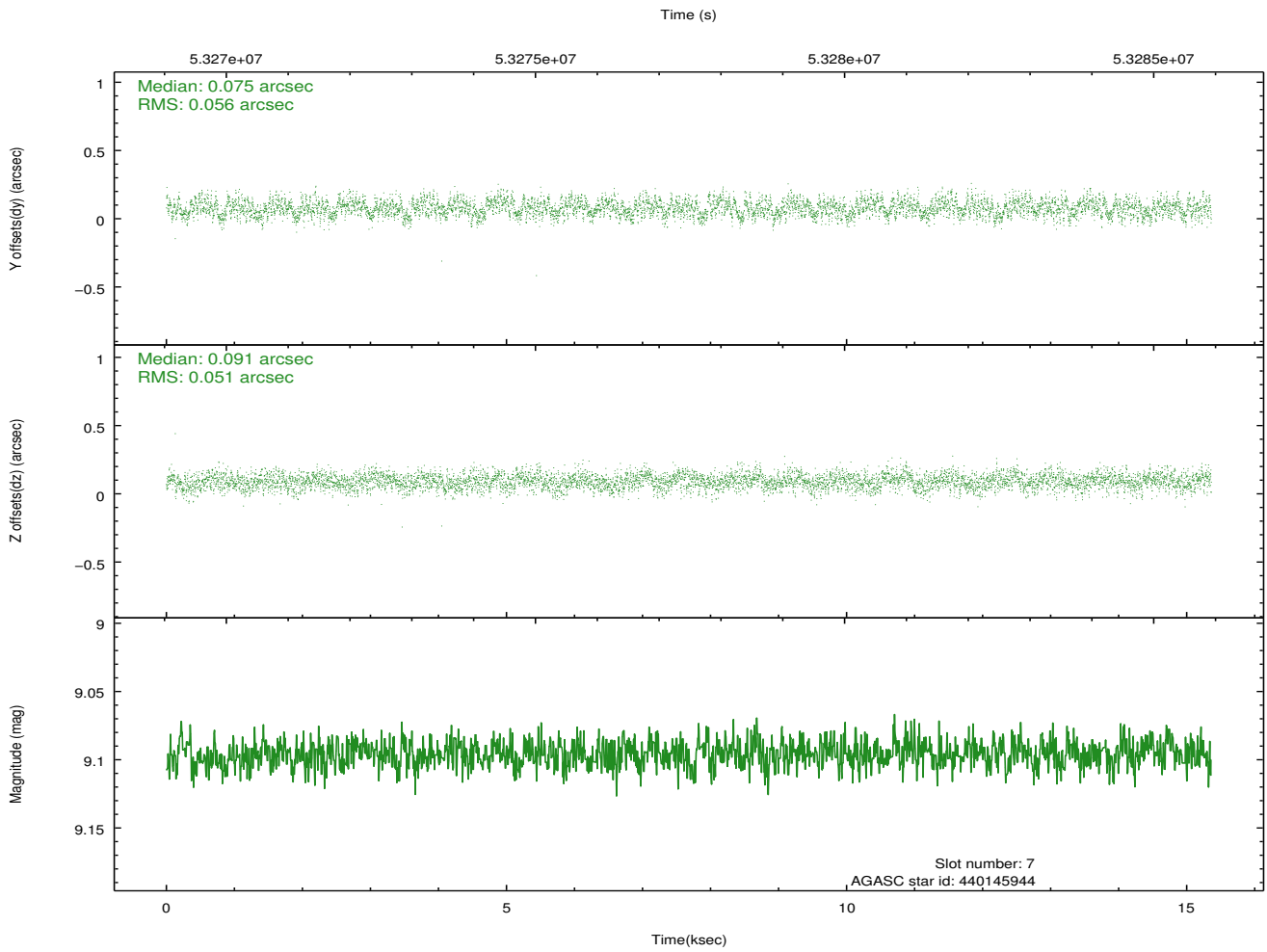
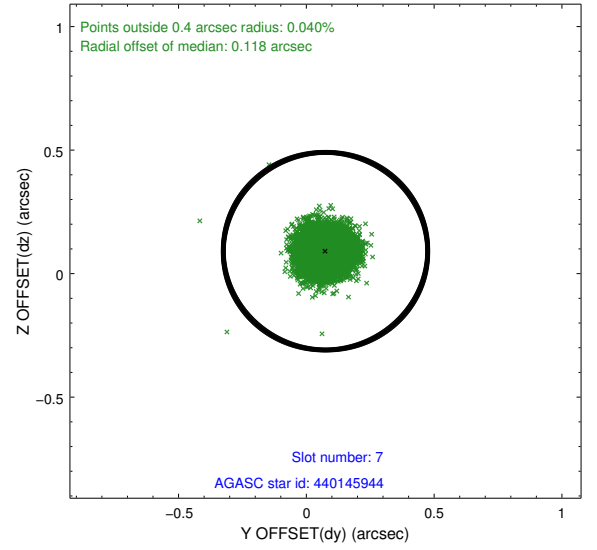
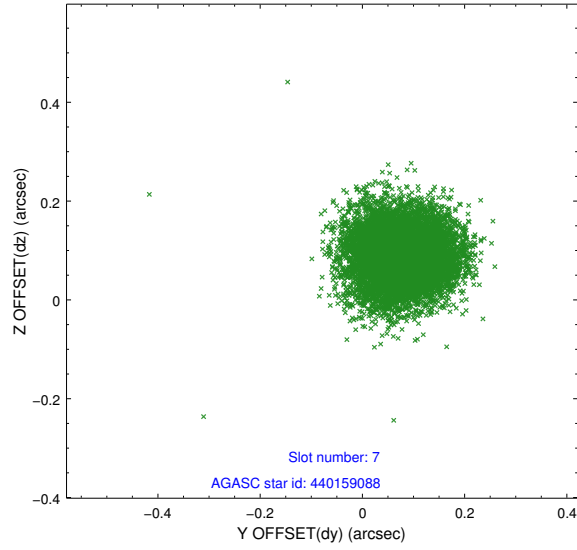
2.4.3 Slot 5



2.4.4 Slot 6

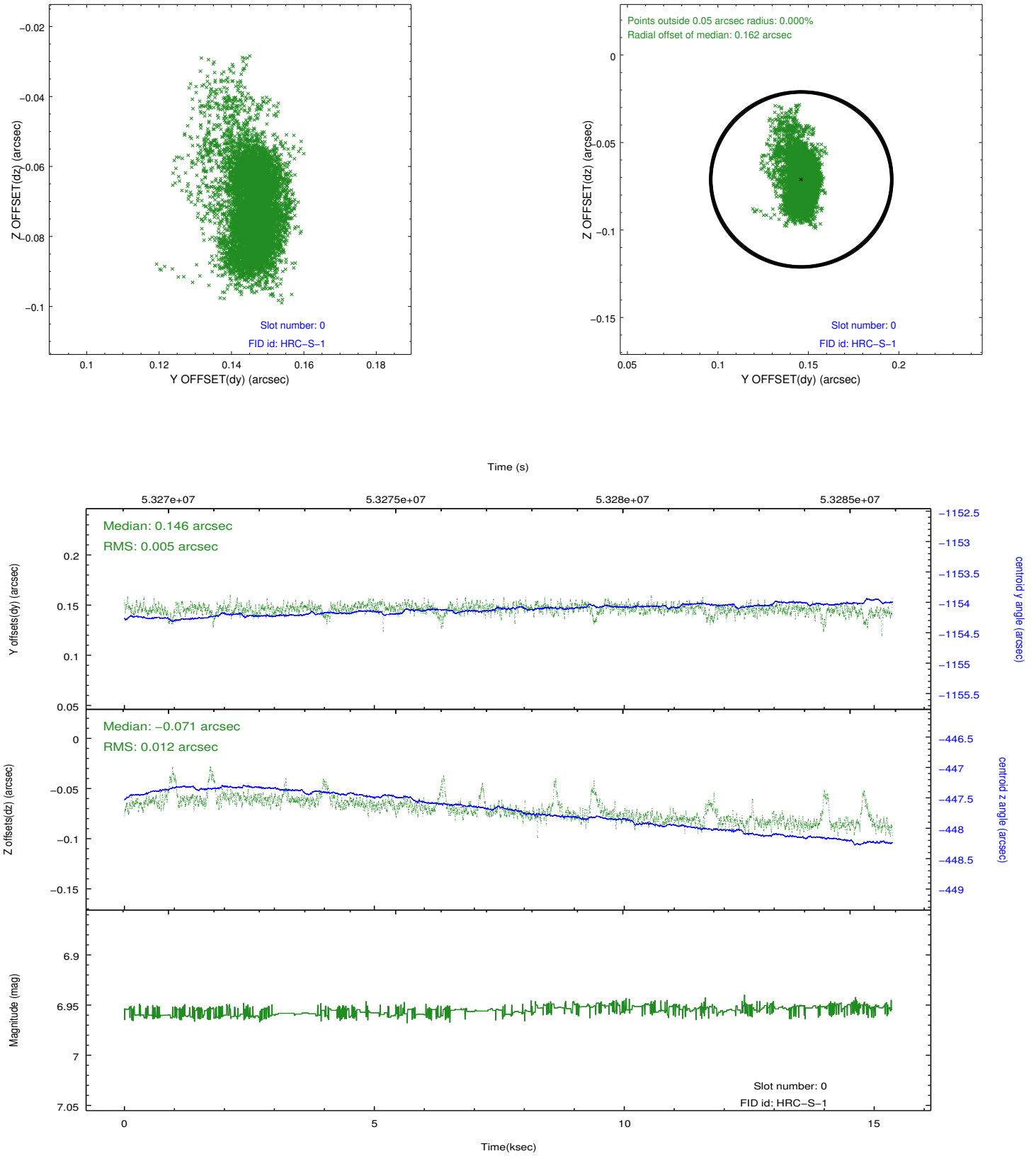


2.4.5 Slot 7

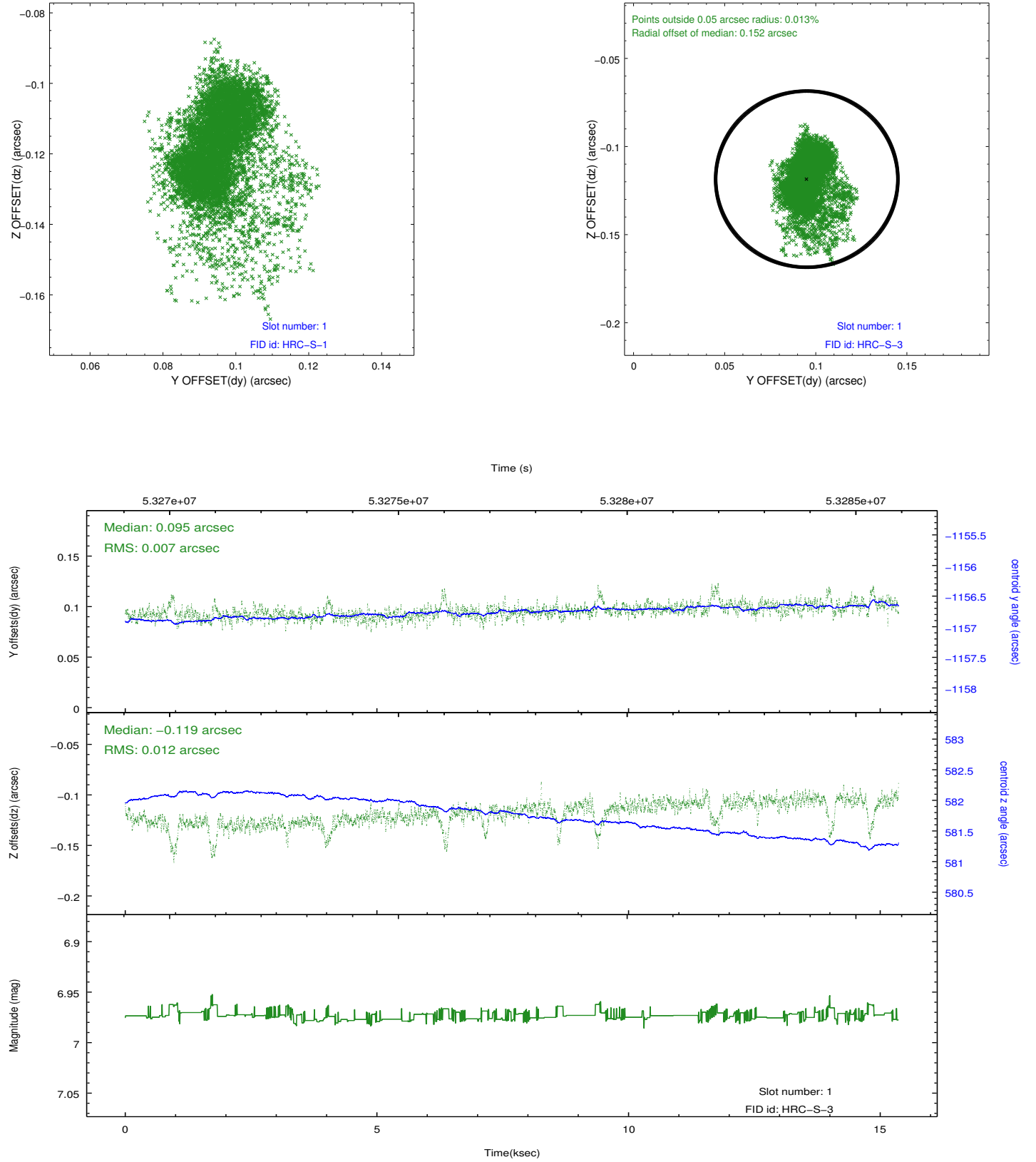


2.5 FID Slots

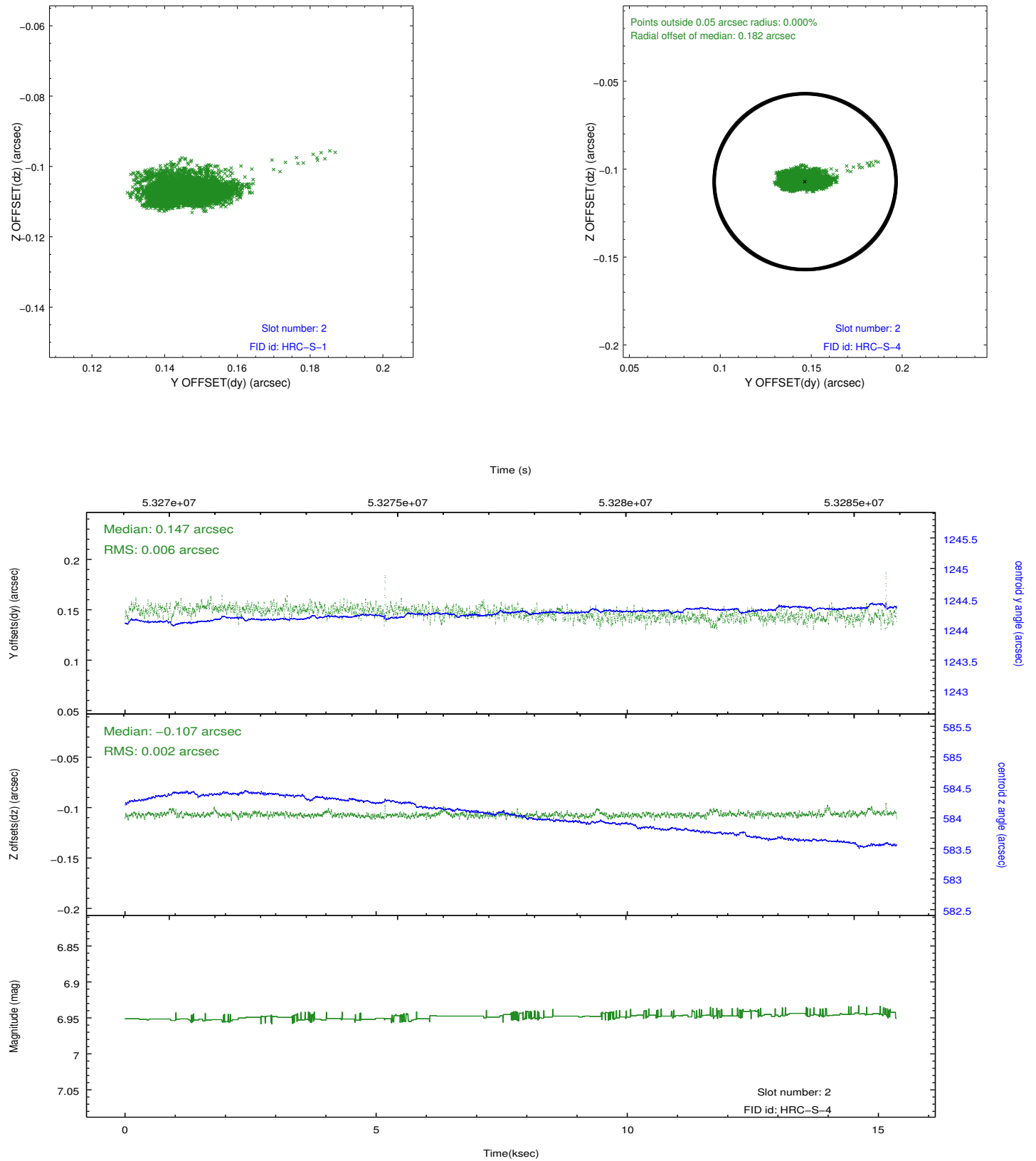
2.5.1 Slot 0



2.5.2 Slot 1

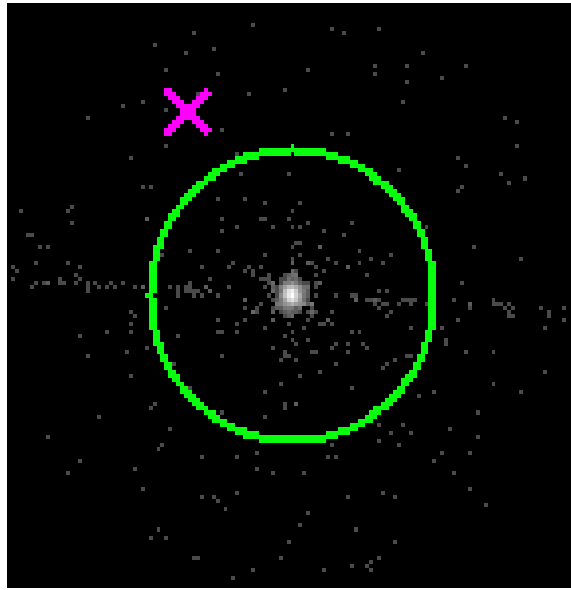


2.5.3 Slot 2

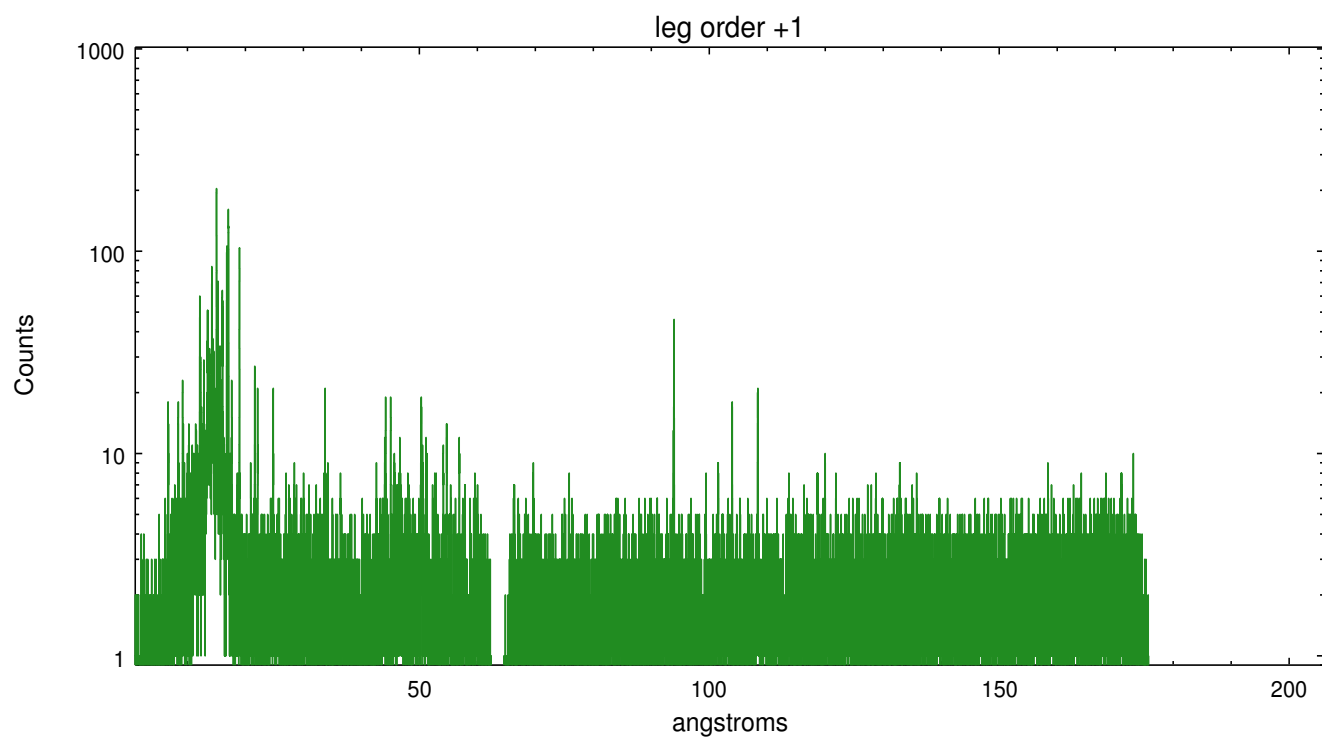
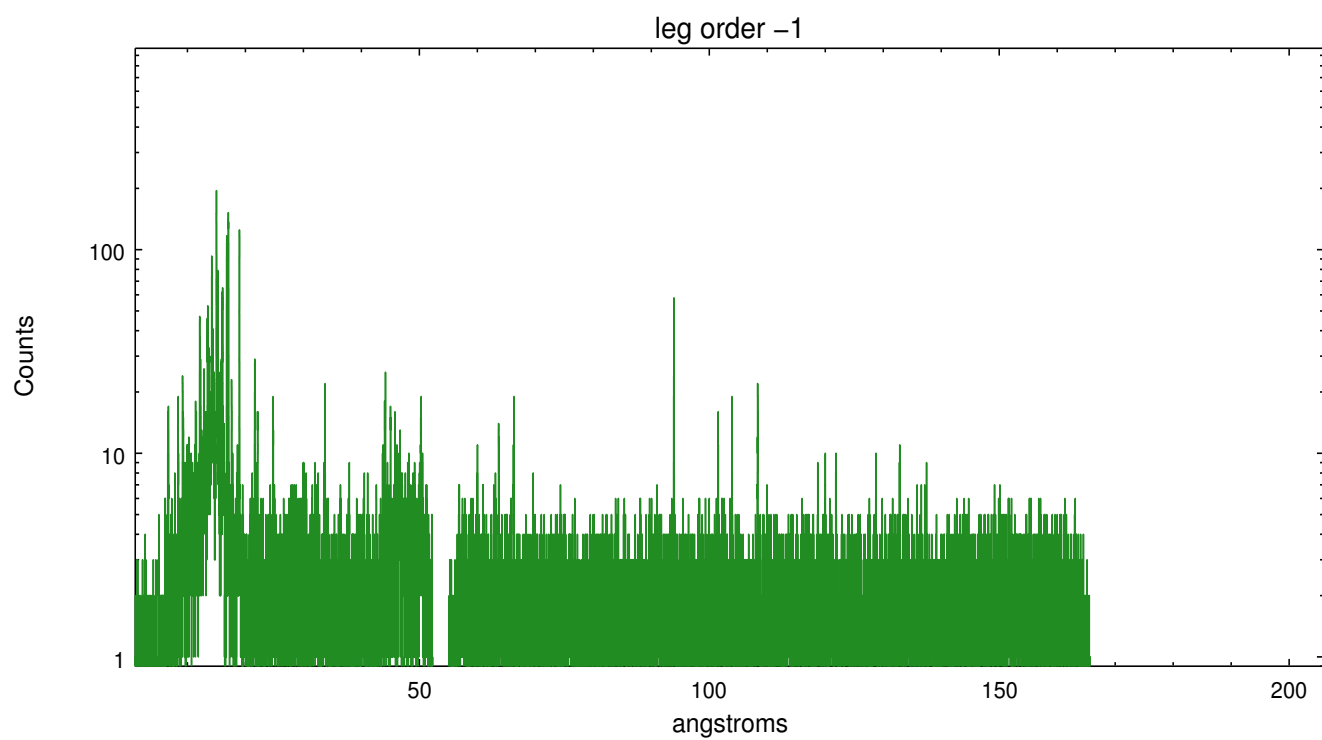


3 Gratings

3.1 LETG Arm



LETG Zero Order



A Summary

A.1 Status

V&V Scientist	Joy Nichols
V&V Date (YYYY-MM-DD)	2010.04.20
V&V Edition	1
V&V Disposition and Status	OK
V&V Charge Time	15.35

A.2 Comments

HRC-S/LETG focus plate measurements.

===

Charge time for this ObsId remains at original value of 15.35 ks,
although
with the current processing the charge time would have been 15.27 ksec.