

# V&V Reference Report

## L2 ASCDS Version : 8.2.1

Observation 1149 - L2 Version 3

Chandra X-Ray Center

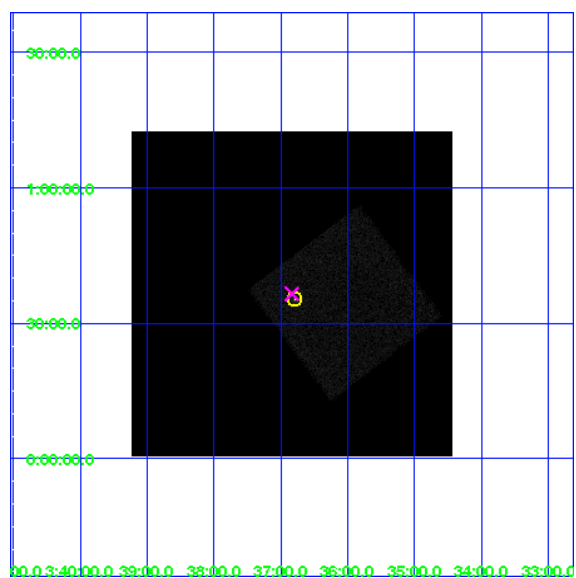
L2 Processing Date : Jan 12 2010

## Contents

<b>1</b>	<b>Front</b>	<b>2</b>
<b>2</b>	<b>OBI</b>	<b>3</b>
2.1	OBI . . . . .	3
2.1.1	Images . . . . .	3
2.1.2	Parameters . . . . .	4
2.1.3	Events . . . . .	4
2.2	Compared Parameters . . . . .	5
2.3	Aspect . . . . .	6
2.4	Star Slots . . . . .	9
2.4.1	Slot 3 . . . . .	9
2.4.2	Slot 4 . . . . .	10
2.4.3	Slot 5 . . . . .	11
2.4.4	Slot 6 . . . . .	12
2.4.5	Slot 7 . . . . .	13
2.5	FID Slots . . . . .	14
2.5.1	Slot 0 . . . . .	14
2.5.2	Slot 1 . . . . .	15
2.5.3	Slot 2 . . . . .	16
<b>3</b>	<b>Point Sources</b>	<b>17</b>
<b>A</b>	<b>Summary</b>	<b>18</b>
A.1	Status . . . . .	18
A.2	Comments . . . . .	18

# 1 Front

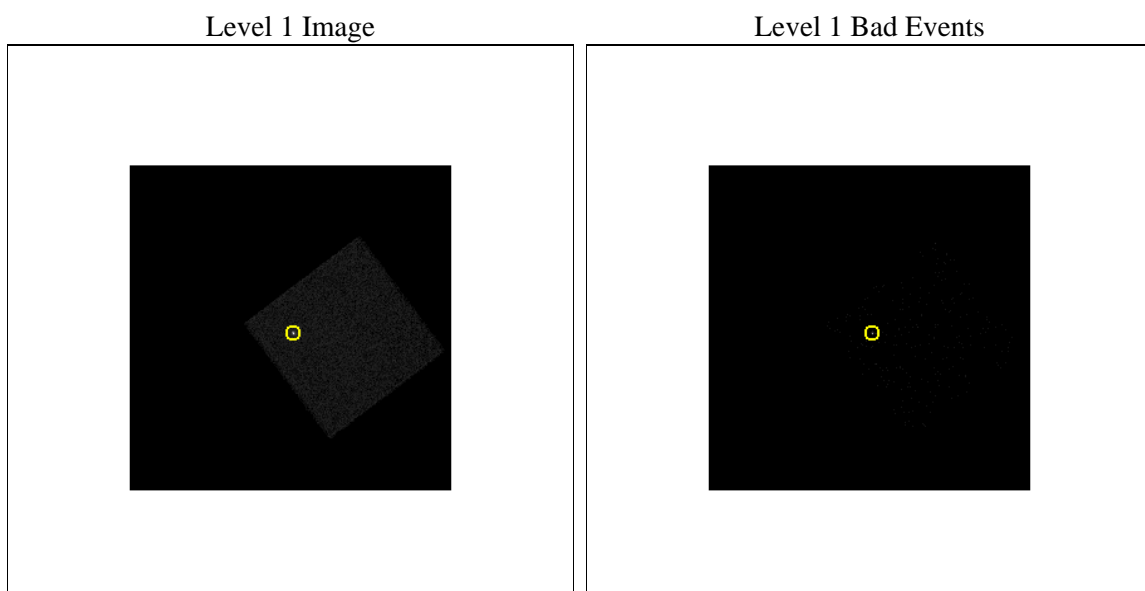
seq_num	280099	Sequence number
obs_id	1149	Observation id
title	&#160	Proposal title
observer	Dr. CXC Calibration	Principal investigator
object	HR1099	Source name
ra_targ	54.197083	Observer's specified target RA
dec_targ	0.589972	Observer's specified target Dec
ra_nom	54.208341559147	Nominal RA
dec_nom	0.60902859084346	Nominal Dec
roll_nom	98.045924282599	Nominal Roll
revision	3	Processing version of data
ontime	794.63127853721	[s]
livetime	787.04892484482	Ontime multiplied by DTCOR
l2events	48440	Number of level 2 events



## 2 OBI

### 2.1 OBI

#### 2.1.1 Images



### 2.1.2 Parameters

obi_num	0	Obi number	sched_exp_time	1000.000000	Scheduled observation exposure time
ascdsver	8.2.1	Processing system revision	ontime	794.63127853721	[s]
caldbver	4.1.5	&#160	l1events	71035	Number of level 1 events
date	2010-01-13T00:18:12	Date and time of file creation			
revision	4	Processing version of data			

### 2.1.3 Events

#### Level 1 Events

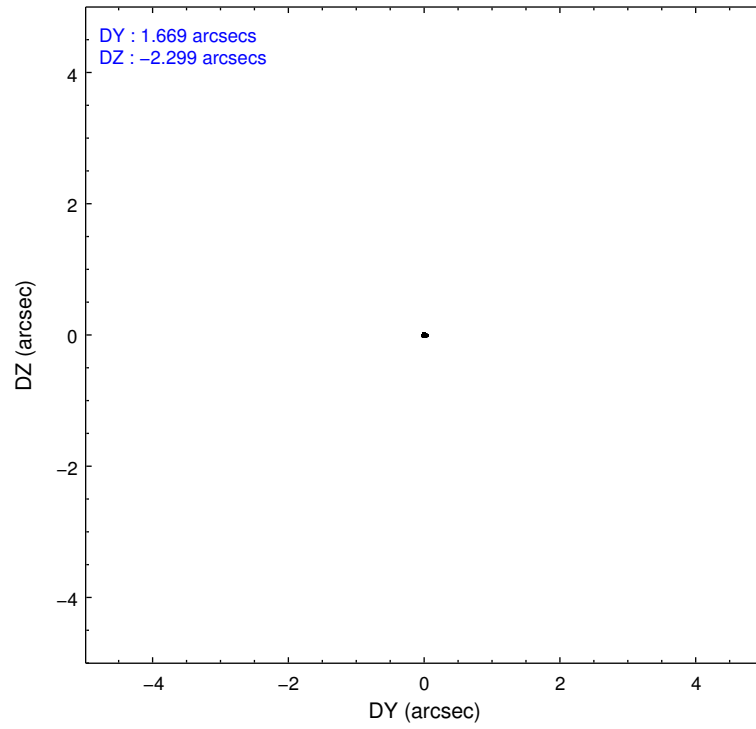
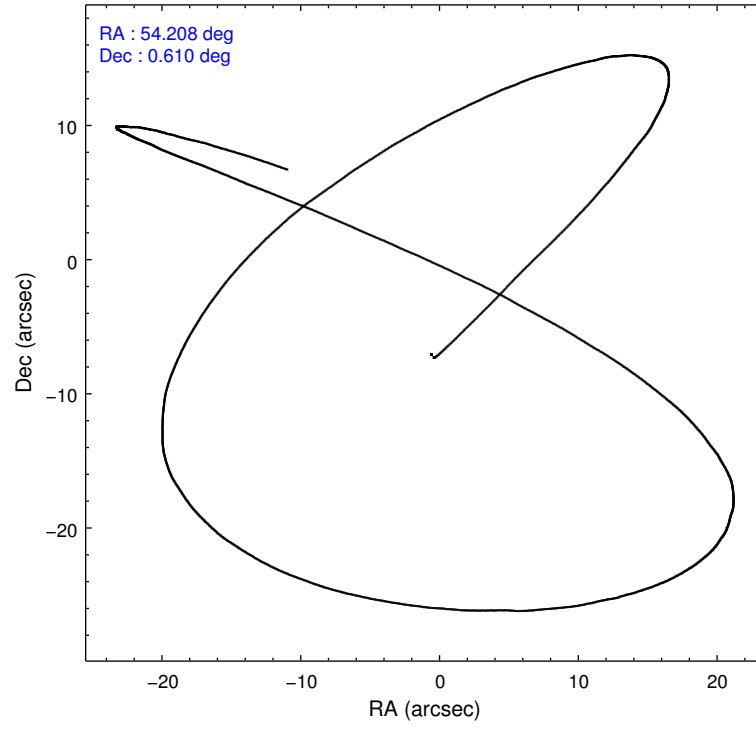
	<b>segment 0</b>
level 1 events	71035
rejected events	4032
rejected %	5%

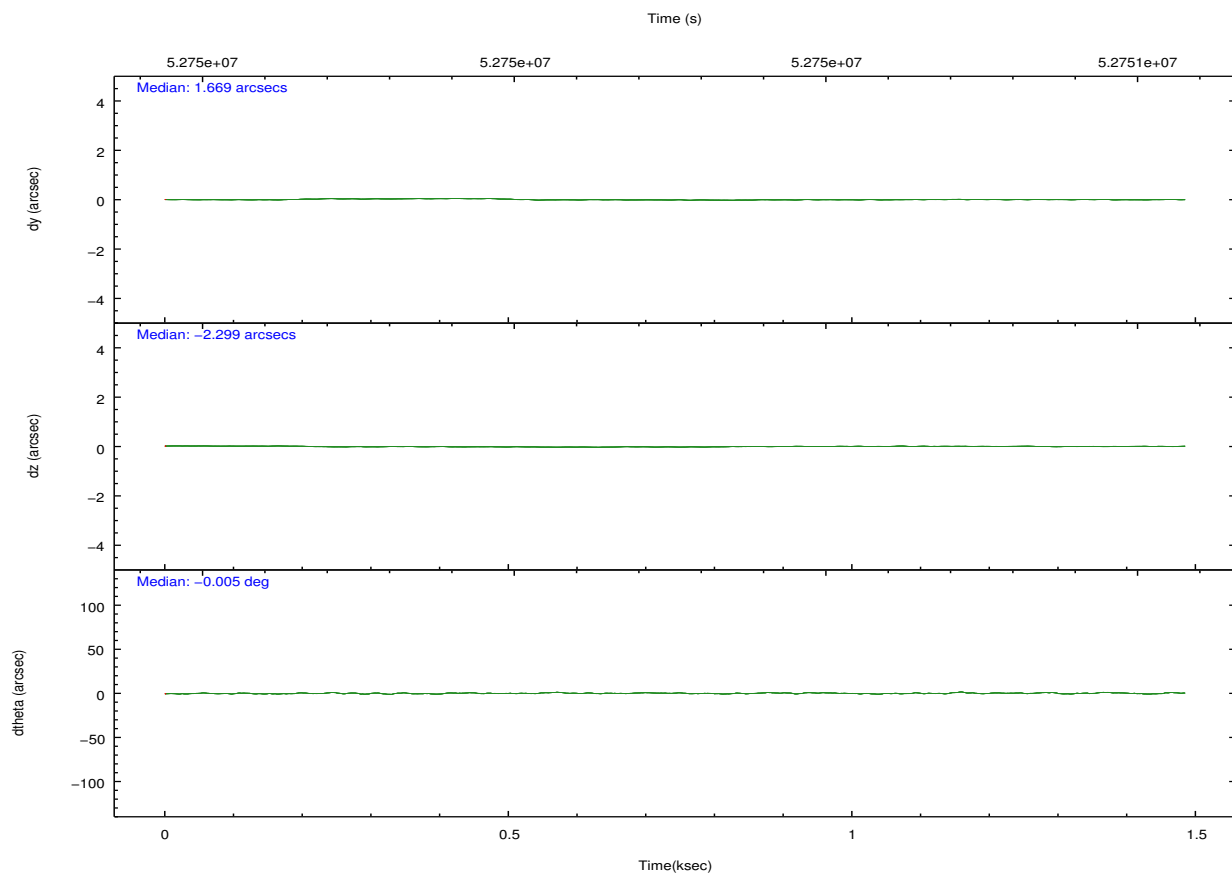
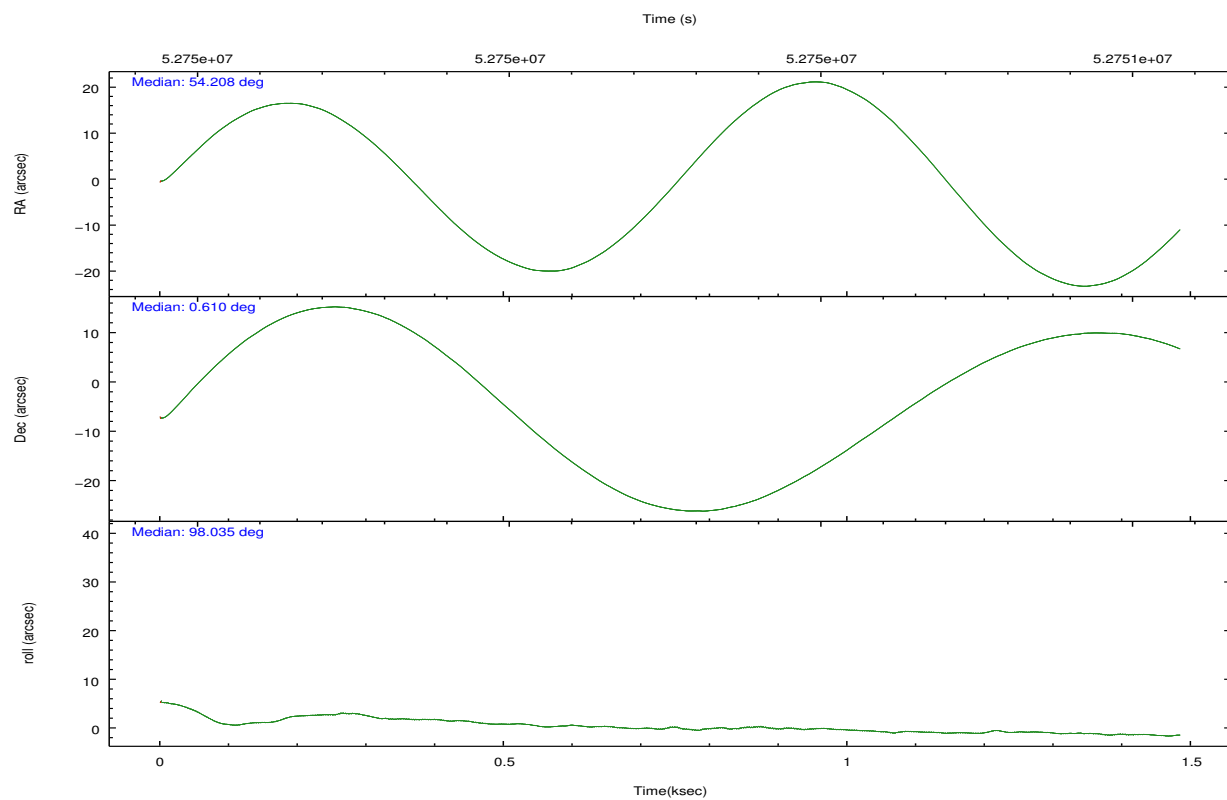
## 2.2 Compared Parameters

Parameter	Planned	Actual
Instrument	HRC	HRC
Detector	HRC-I	HRC-I
Grating	NONE	NONE
Data mode	OBSERVING	OBSERVING
Observation mode	POINTING	POINTING
Pointing RA	54.225365	54.20834155914742
Pointing Dec	0.586443	0.6090285908434588
Pointing Roll	98.141217	98.04592428259949
SIM focus pos (mm)	-1.040293	-1.300001029371461
SIM defocus (mm)	0	-0.259708408712586
SIM translation stage pos (mm)	91.869942	91.86553817309772
SIM translation stage offset (mm)	35.115552	35.11995071850384
Observation start time	52750002.184000	52749335.795162
Observation start date	1999-09-03T12:45:38	1999-09-03T12:35:35
Observation end time	52751002.184000	52751135.695227
Observation end date	1999-09-03T13:02:18	1999-09-03T13:05:35

Parameter	Planned	Actual
Obspar format version number	6	6
Obspar file type	PREDICTED	ACTUAL
Obspar update status	NONE	UPDATED

## 2.3 Aspect





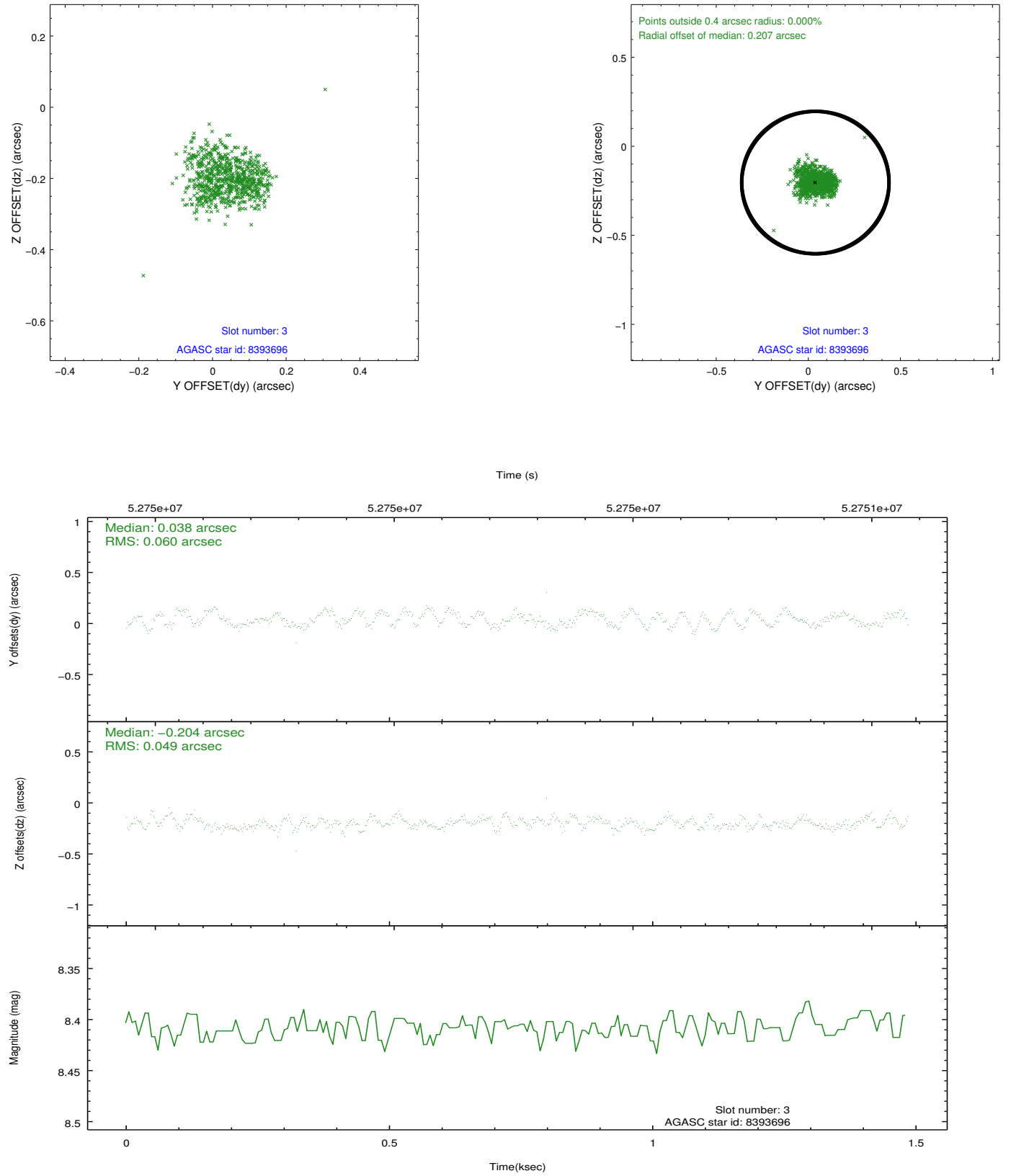
Slot Statistics

slot	status	id	mag	n_pts	med_dy	med_dz	dr1	dr2	ra	dec	mean_y	mean_z
0	FID	HRC-I-1	6.95	725	-0.263	-0.129	0.006	0.011	0.000000	0.000000	-755.82	-567.40
1	FID	HRC-I-3	7.01	725	0.251	-0.227	0.007	0.011	0.000000	0.000000	-1187.44	1739.93
2	FID	HRC-I-4	6.87	725	0.127	0.264	0.005	0.008	0.000000	0.000000	1283.06	1741.81
3	GUIDE	8393696	8.41	725	0.038	-0.204	0.084	0.121	53.645666	0.680479	626.19	2017.03
4	GUIDE	8398800	8.69	725	0.037	0.090	0.056	0.089	54.242352	0.922024	1183.97	-229.19
5	GUIDE	8390744	9.02	725	-0.057	-0.157	0.084	0.130	53.677290	0.926294	1487.66	1778.84
6	GUIDE	8395104	8.66	725	-0.012	0.184	0.072	0.114	54.744893	0.796520	482.13	-1956.33
7	GUIDE	8397624	9.54	723	-0.012	0.083	0.112	0.191	54.812881	1.297049	2230.10	-2458.53

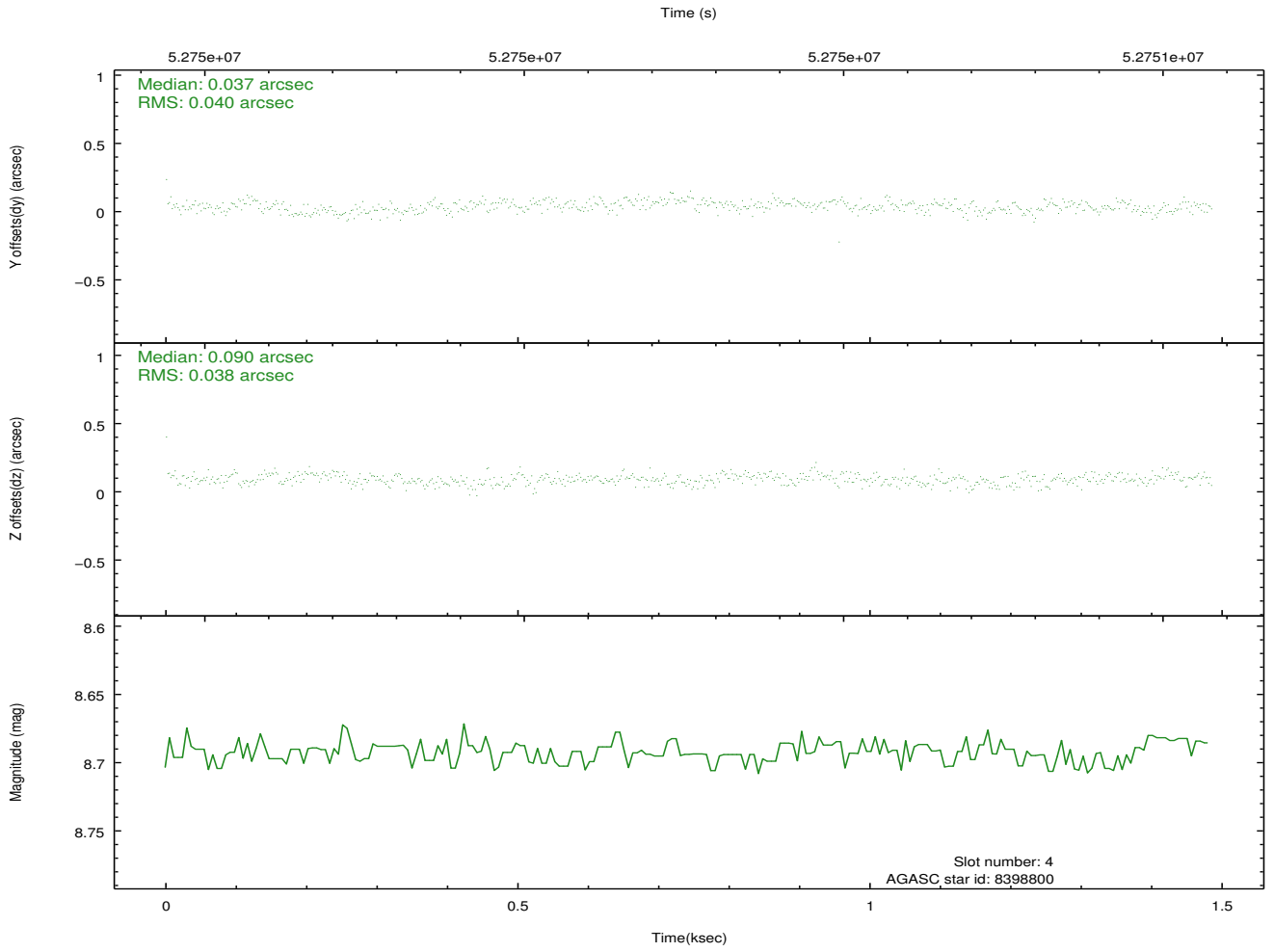
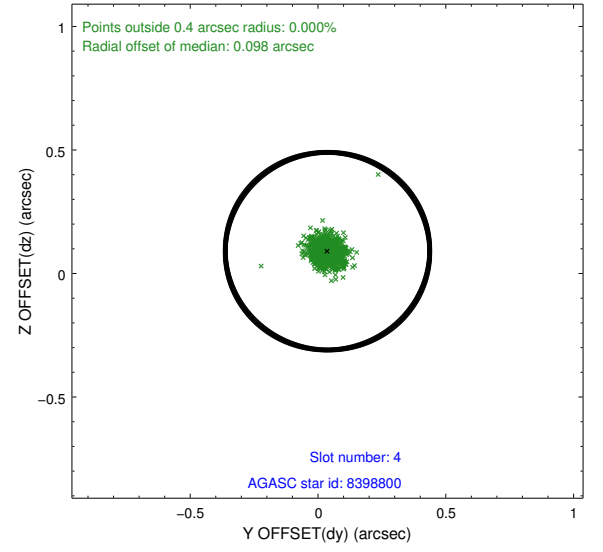
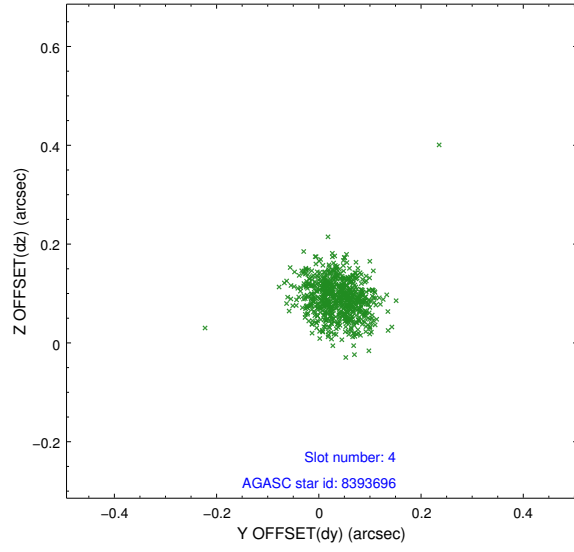


## 2.4 Star Slots

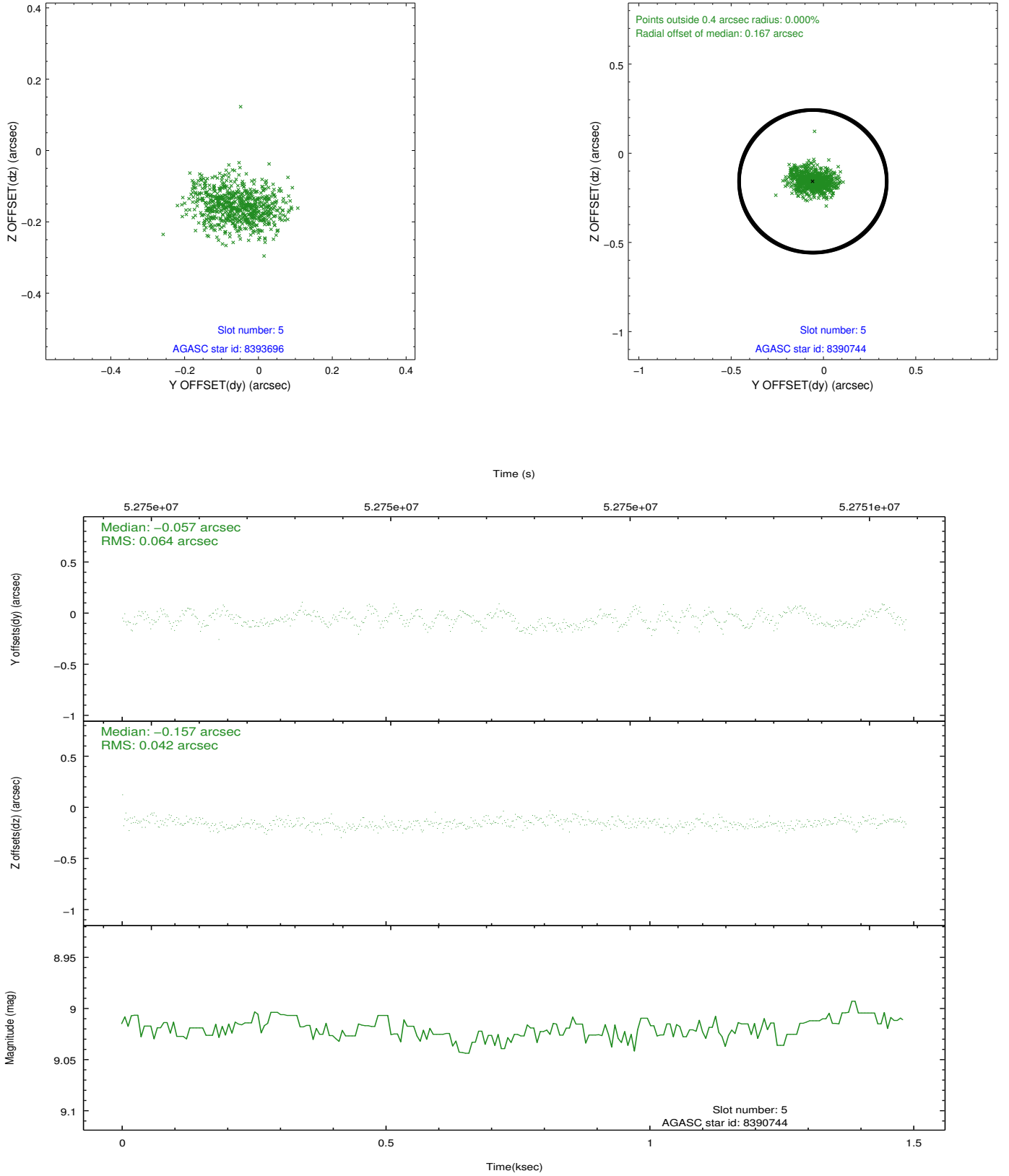
### 2.4.1 Slot 3



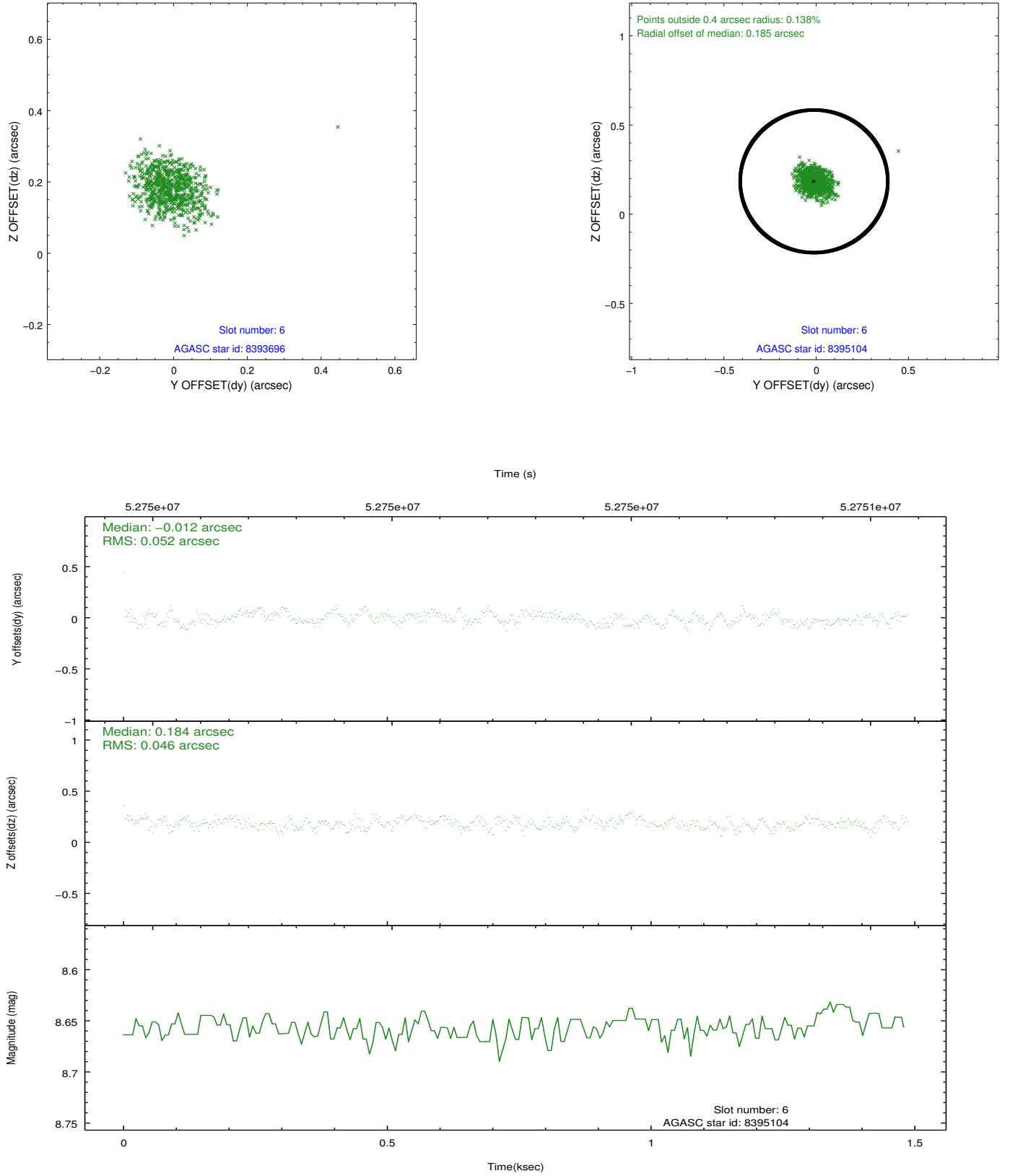
## 2.4.2 Slot 4



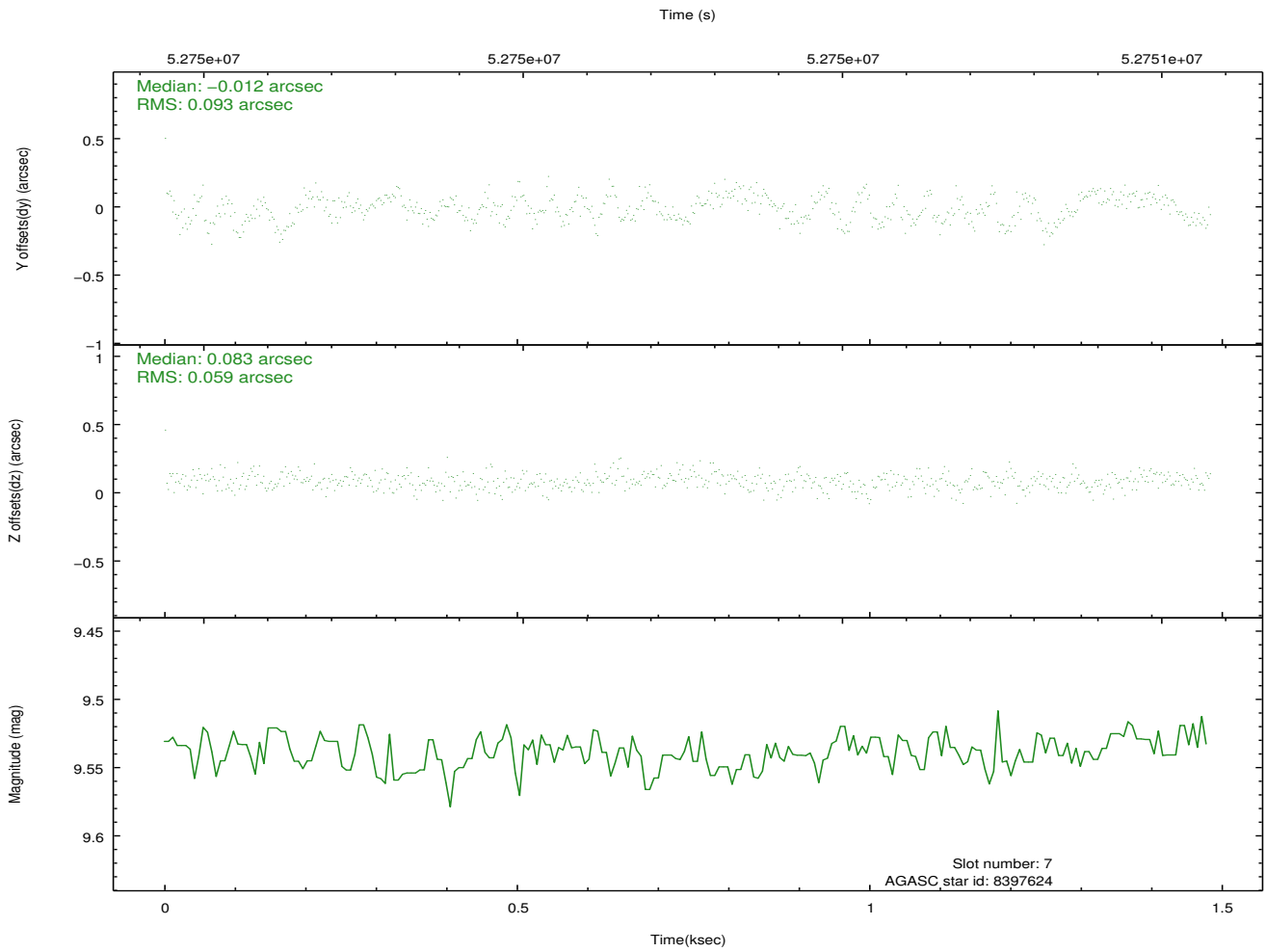
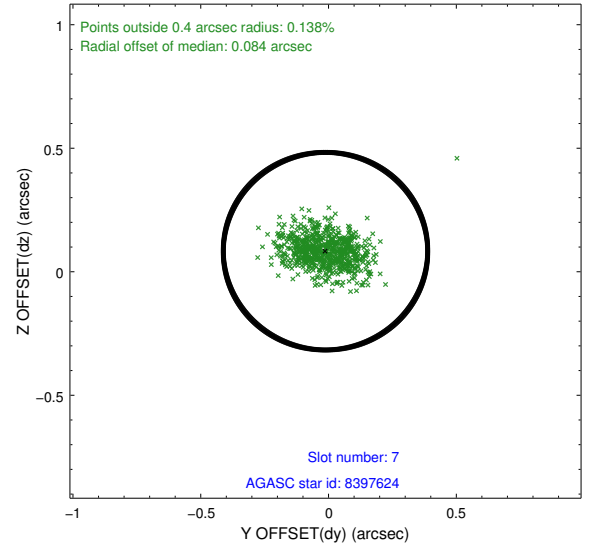
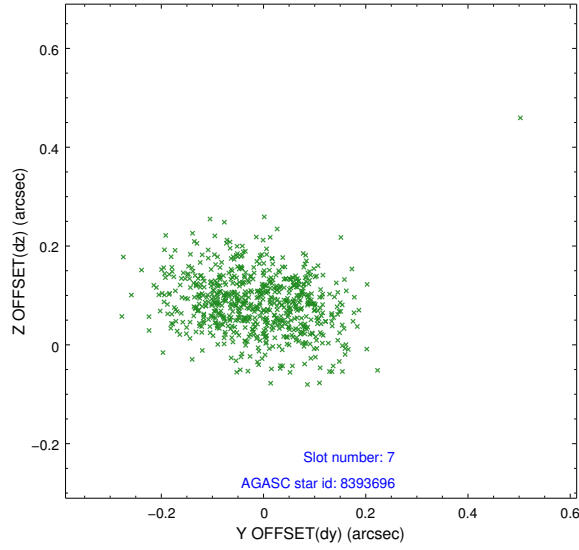
### 2.4.3 Slot 5



## 2.4.4 Slot 6

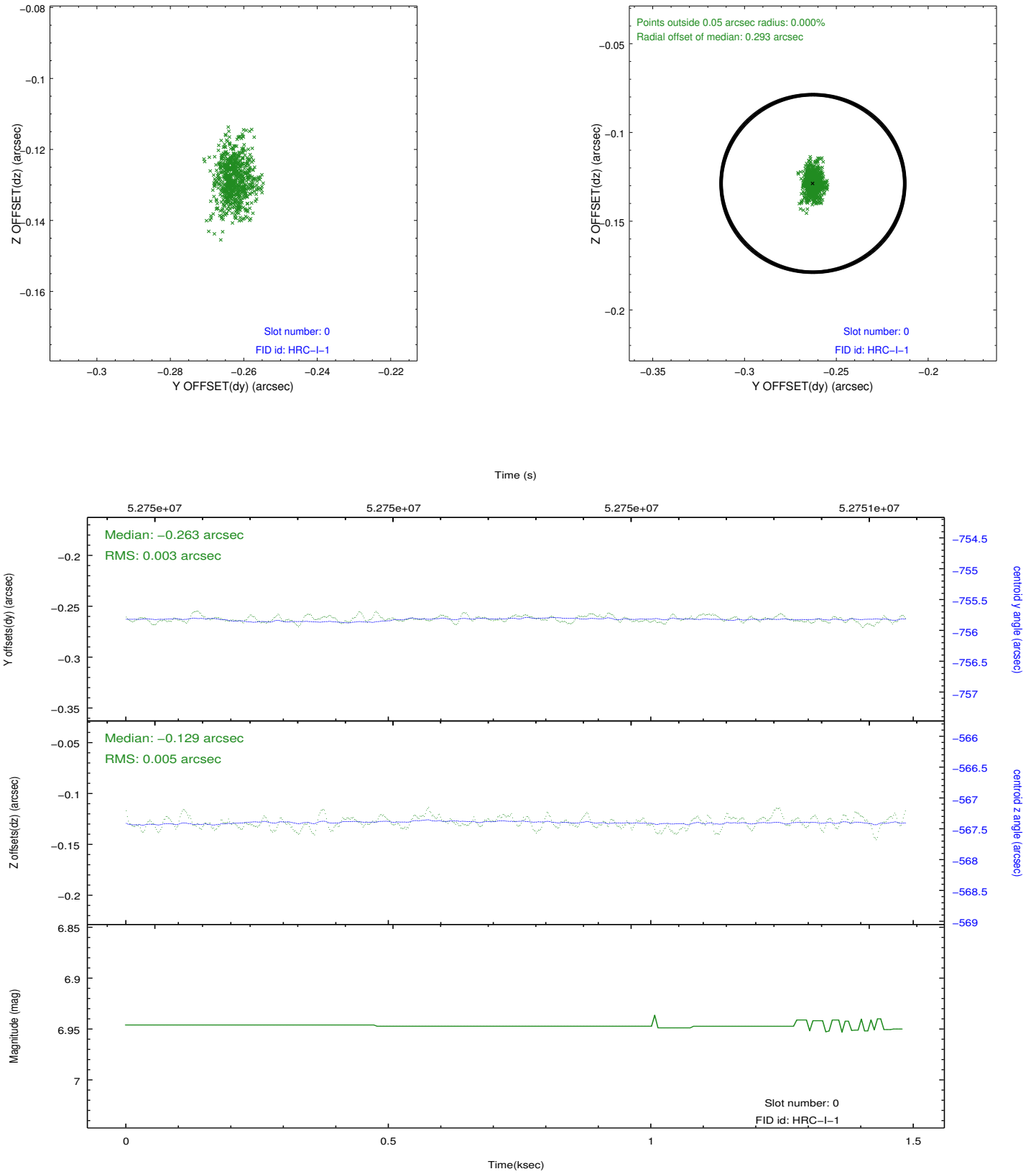


## 2.4.5 Slot 7

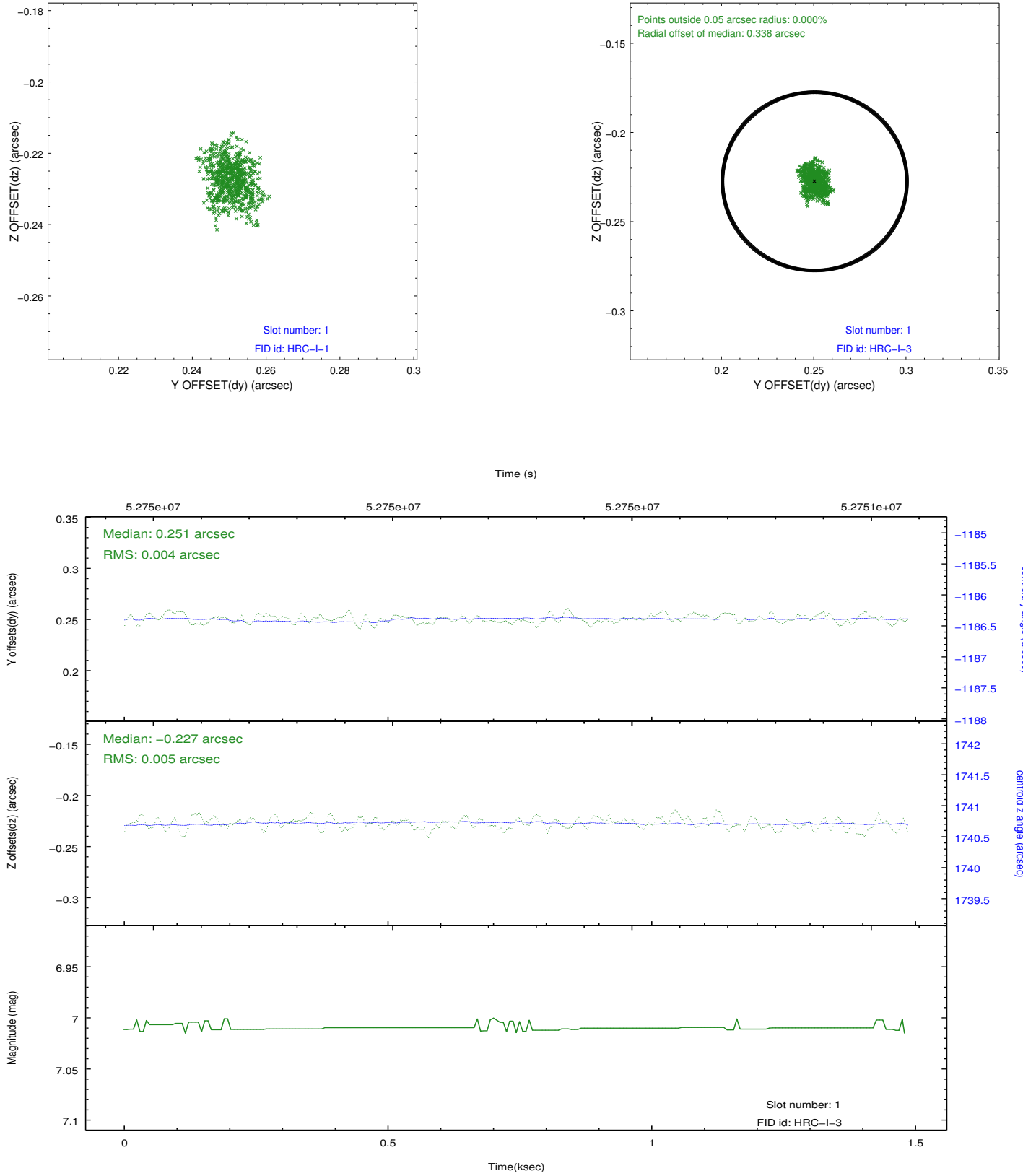


## 2.5 FID Slots

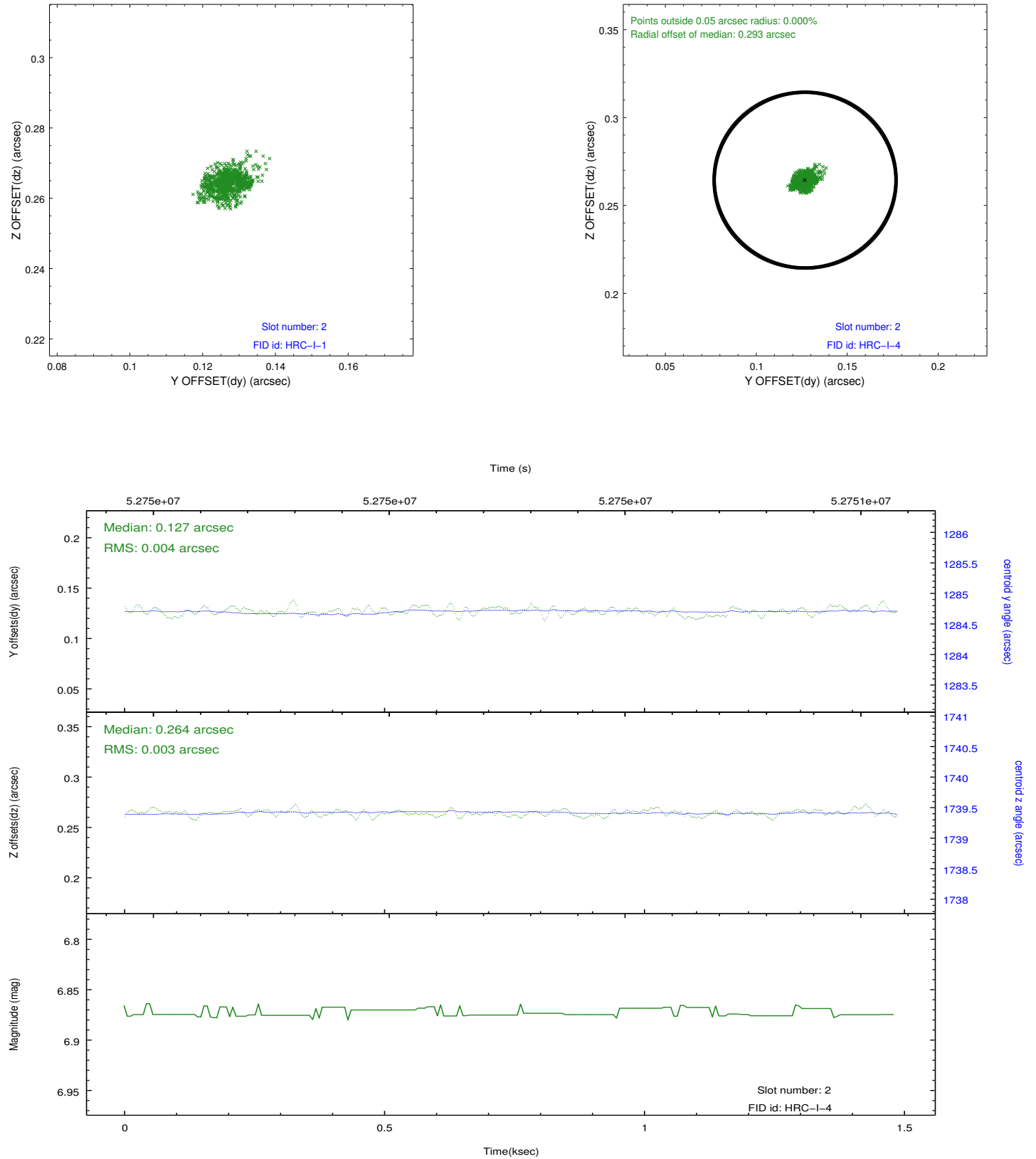
### 2.5.1 Slot 0



## 2.5.2 Slot 1



### 2.5.3 Slot 2





### 3 Point Sources

# A Summary

## A.1 Status

V&V Scientist	Joy Nichols
V&V Date (YYYY-MM-DD)	2010.02.02
V&V Edition	1
V&V Disposition and Status	OK
V&V Charge Time	0.794

## A.2 Comments

HRC-I Optical Axis determination. SIMBAD coordinates for this object are ra = 03:36:47.2895, dec = +00:35:15.928. Observer requested coordinates ra = 03:36:47, dec = +00:35:23.90.30. Target was intended to be off-axis for calibration purposes, but it is not at the intended position on the chip due to the observer's error in the coordinates.